



QUEBEC
ALBUM





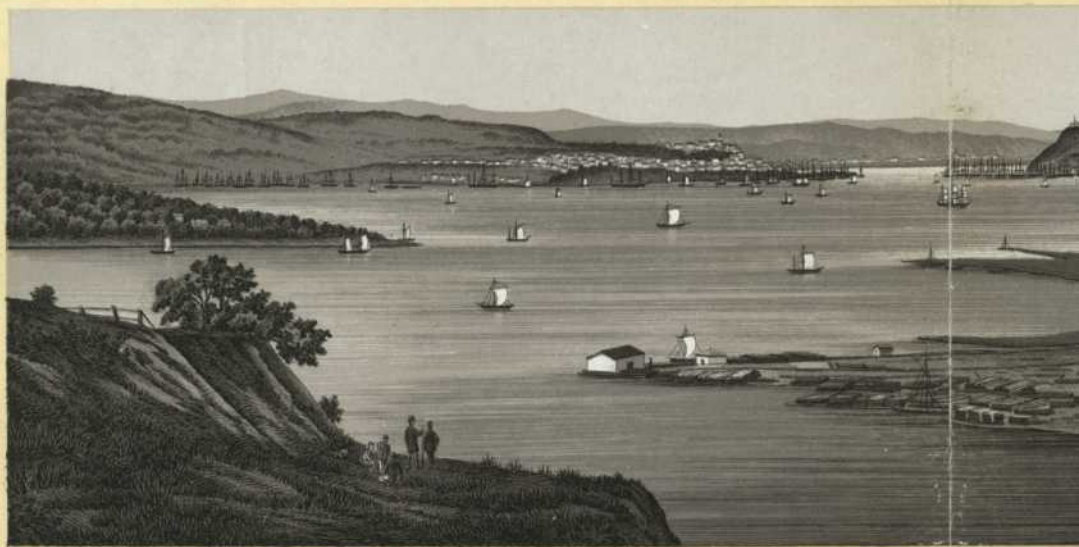
CITADEL.



QUEBEC FROM LEVIS.



DUFFERIN TERRACE & LOWER TOWN.



ISLAND OF ORLEANS.

POINT LEVI. QUEBEC
QUEBEC HARBOR. FROM THE



PARLIAMENT BUILDING.

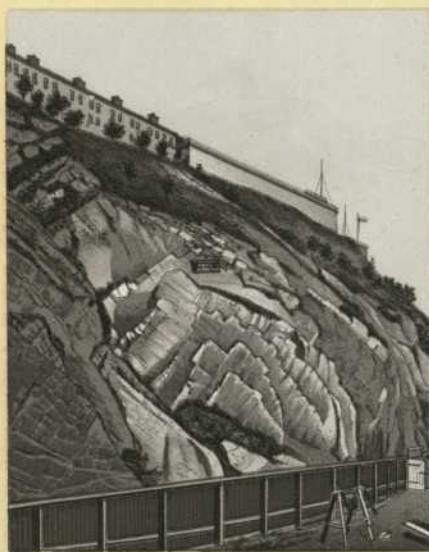


W



INT LEVI. QUEBEC.
QUEBEC HARBOR. FROM THE EAST.

BEAUPORT.



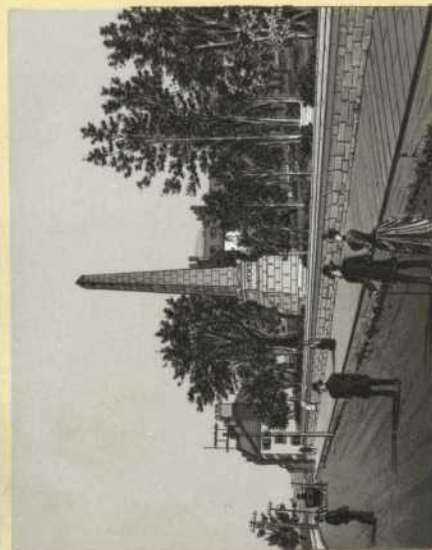
WHERE GEN MONTGOMERY FELL DEC. 31st 1775.



HOUSE IN WHICH GEN MONTGOMERY'S BODY WAS LAID
DEC. 31st 1775.



WOLFE MONUMENT AND JAIL.



WOLFE AND MONTCALM MONUMENT IN THE GOVERNORS GARDEN.



MARTELLO TOWER, FLAINS OF ABRAHAM.

DRILL HALL.



Y.M.C.A. BUILDING



LUNATIC ASYLUM, BEAUPORT.



COURT HOUSE



ST. LOUIS HOTEL.



J. B. LALIBERTE'S

EXTENSIVE FUR ESTABLISHMENT, 145 ST. JOSEPH STREET.

ST. JOHN'S GATE.



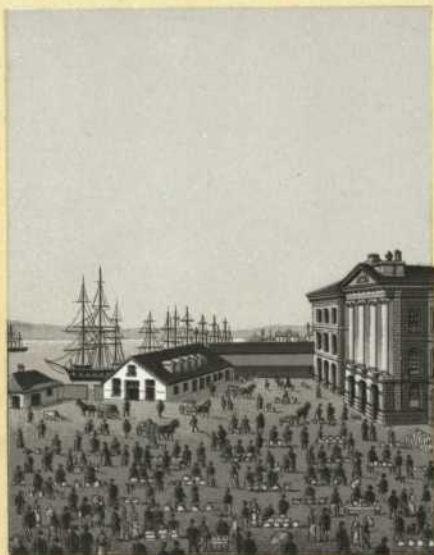
KENT GATE.



VIEW ON BEAUPORT ROAD.



ST. LOUIS GATE.



CHAMPLAIN MARKET.



ELEVATOR.



FRENCH CATHEDRAL.



INTERIOR FRENCH CATHEDRAL.



GRAND BATTERY & LAVAL UNIVERSITY.



BREAKNECK STEPS.



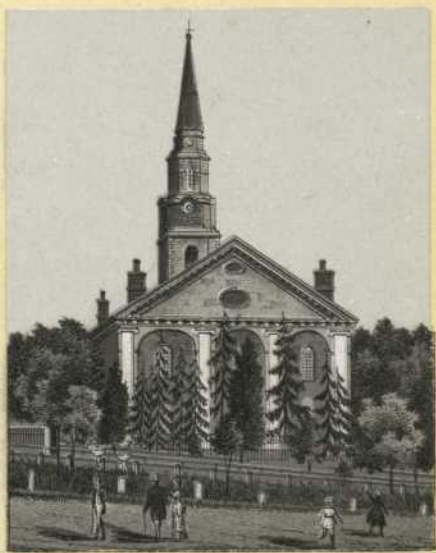
CHAMPLAIN STREET.



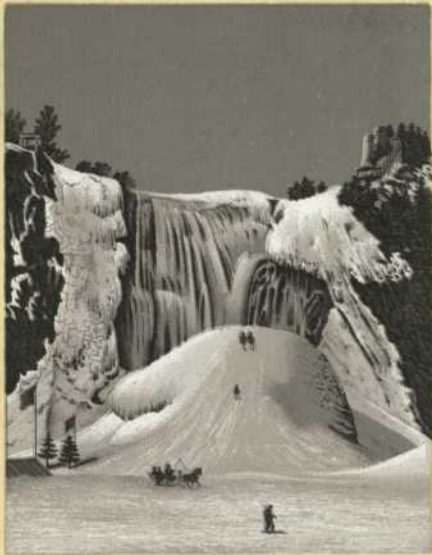
CALECHE.



CUSTOM HOUSE.



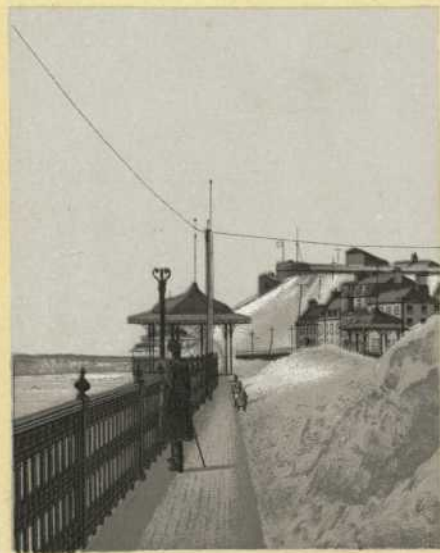
ENGLISH CATHEDRAL.



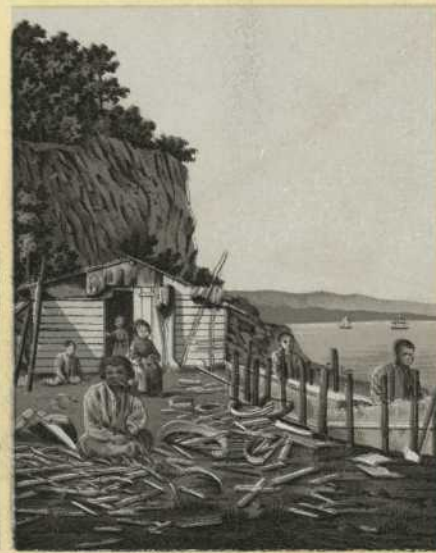
FALLS OF MONTMORENCI IN WINTER.



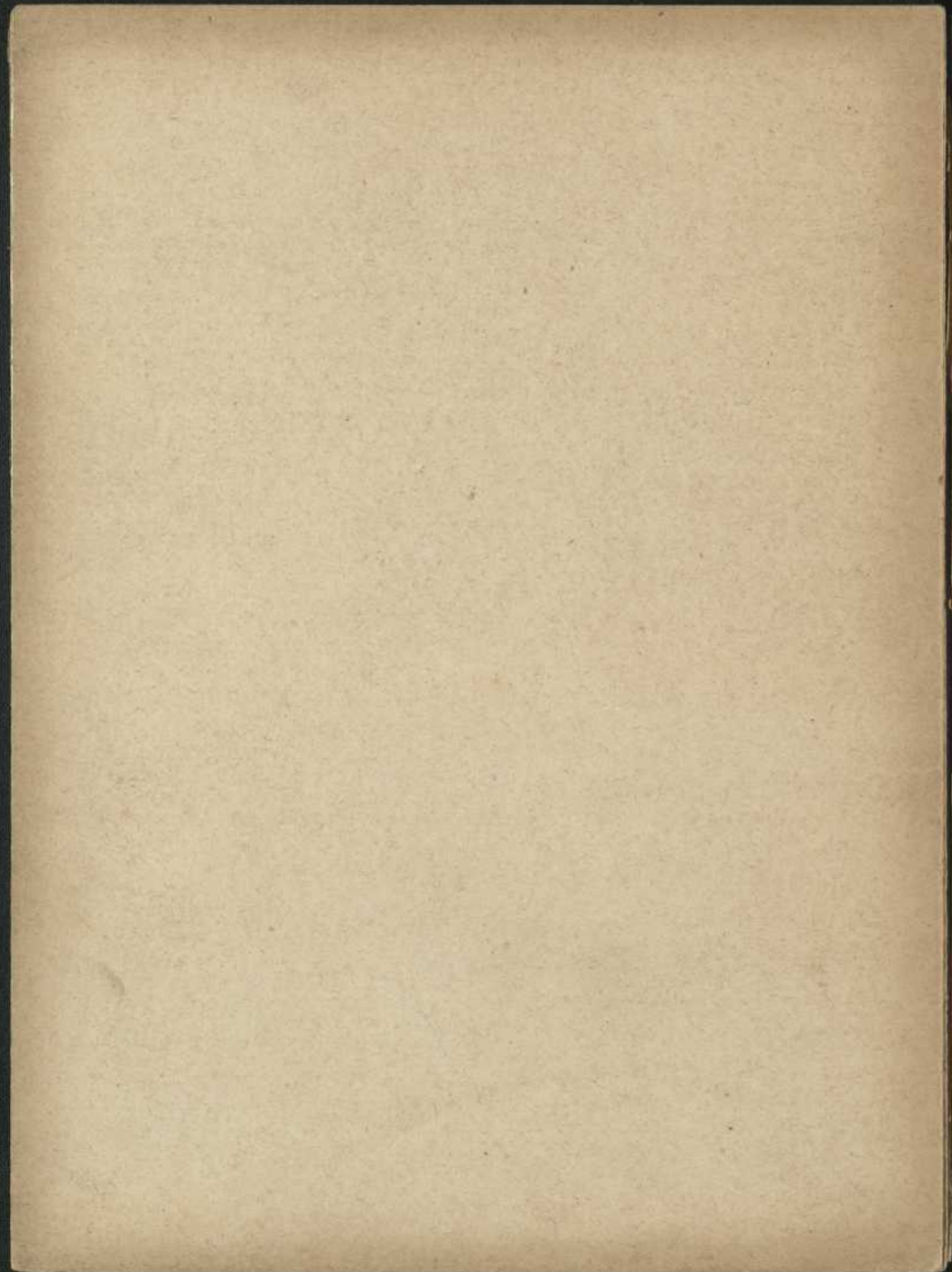
FALLS OF MONTMORENCI IN SUMMER.



CITADEL IN WINTER.



INDIANS MAKING BARK CANOES.





MAP
of the
CITY OF QUEBEC

