

no 19

233

Miss Corbett

New & Superior Edition.

GRAND MARCH

AND

PASTORALE

FOR THE

PIANO FORTE,

COMPOSED BY

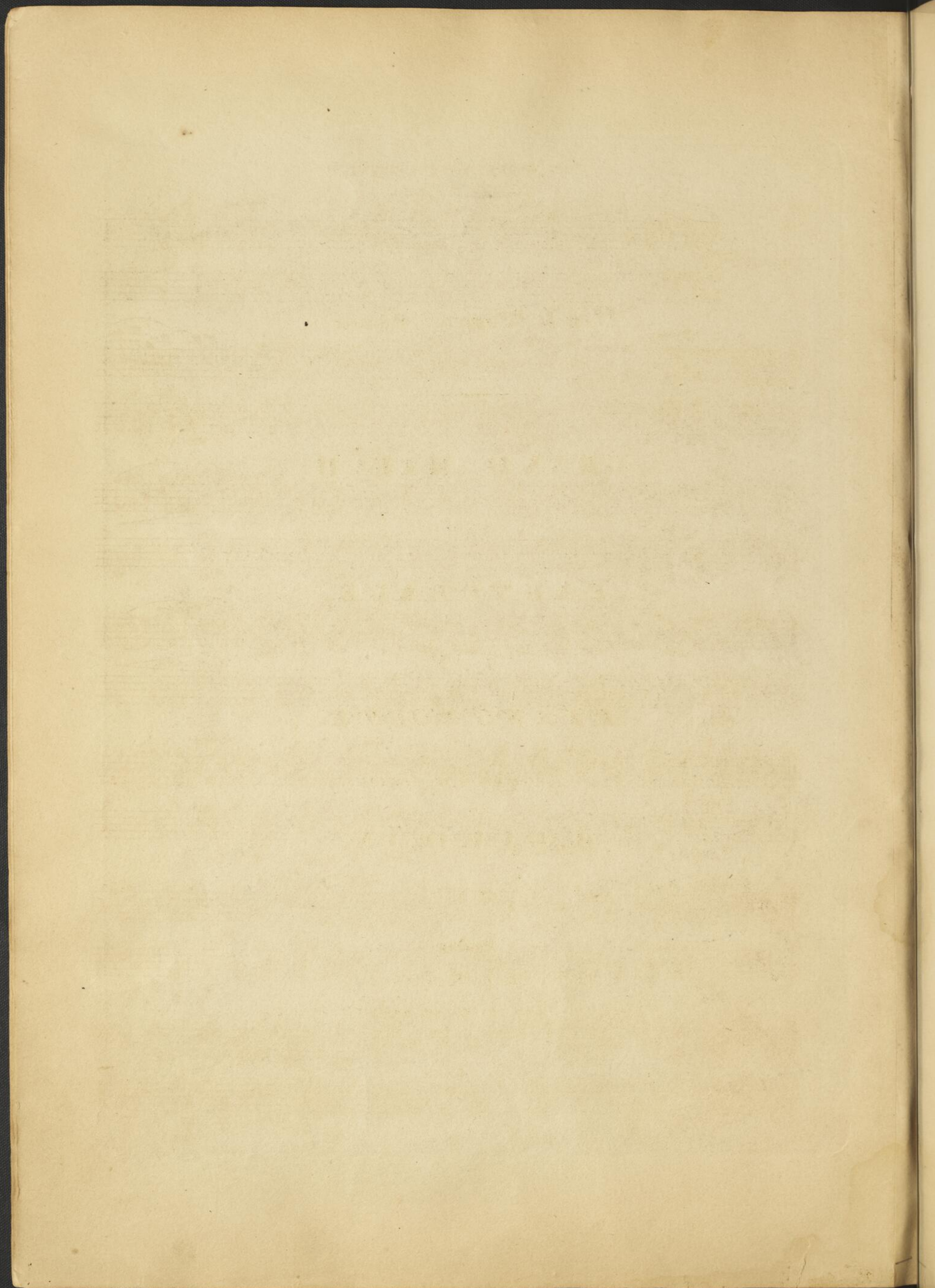
J. GILDON.

Price 2/6

London,

Published for the Proprietors, by

METZLER & SON, MUSIC SELLERS, 105, WARDOUR STREET.



INTRODUCTION

1

ADAGIO.

p dolce. *fp*

Ped: *

f *p*

Ped: *

p *f*

Ped: *

p *f* *f* *f*

loco.

Ped: *

p dolce. *fp*

Ped: *

f *p* *p*

Ped: *

Cres: *ff*

Ped: *

Gildon's March.

GRAND MARCH.

MAESTOSO.

f Ped: *p* * *f* *p* *f* *p* *f* Ped: * Ped: *

8va loco. *sf* Ped: *

Bugle. *p* *pp* *cres:* *f* Bugle. *p* Ped: *

pp *Cres:* *f* Ped: *

p *Cres:* Ped: * Ped: *

f Clar. Solo. *p* Ped: *

pp Flutes. 8va Ped: *

PASTORALE.

ALLEGRETTO

mez f p f p f p f p f

Ped: *

f p f p f p f p f p f

Ped: * Ped: * Ped: * Ped: * Ped:

loco. f p f p f

Ped: *

f p f p f Dolce.

Ped: *

Ped: *

f p f p f Dolce.

Ped: *

Musical notation for the first system, including treble and bass staves with notes, rests, and a 'Ped:' marking with an asterisk.

Musical notation for the second system, including treble and bass staves with dynamic markings such as *mez f*, *p*, and *f*, and 'Ped:' markings with asterisks.

Musical notation for the third system, including treble and bass staves with a *8va* marking and multiple 'Ped:' markings with asterisks.

Musical notation for the fourth system, including treble and bass staves with a *loco.* marking and dynamic markings like *f* and *p*, and 'Ped:' markings with asterisks.

Musical notation for the fifth system, including treble and bass staves with a *8va* marking and a *p dolce.* dynamic marking, and a 'Ped:' marking with an asterisk.

Musical notation for the sixth system, including treble and bass staves with *loco.*, *Calando.*, and *ten:* markings, and a 'Ped:' marking with an asterisk.

Gildon's March.

