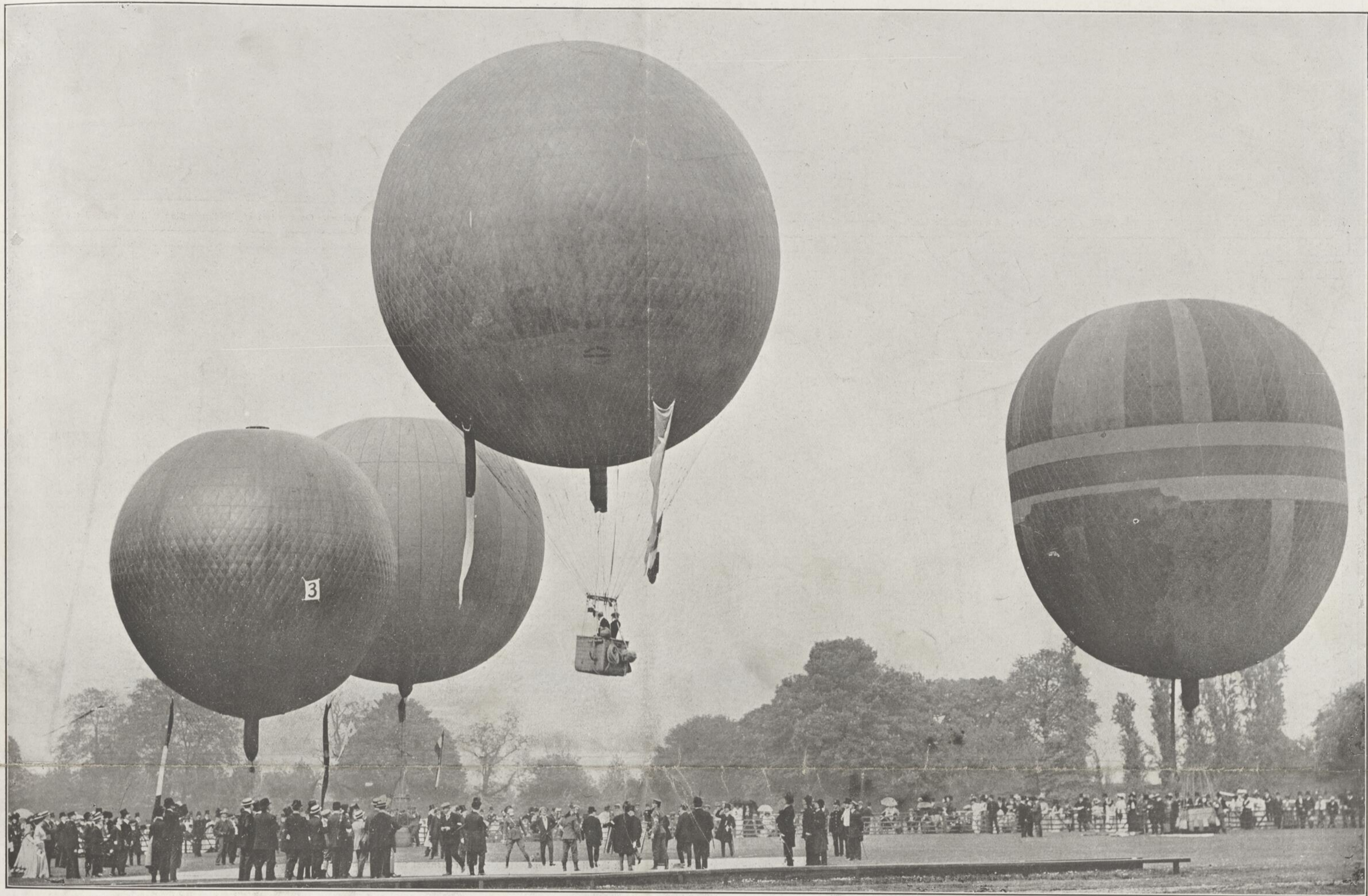


Conquest of the Air Now Near to Accomplishment; Start of a Great Balloon Race in England



START OF THE INTERNATIONAL BALLOON RACE AT HURLINGHAM, ENG.—In the above illustration the "Cagnac," of Switzerland, the largest balloon entered in the race, may be seen on the extreme right. Unfortunately, it was unable to start owing to a fault in the ripping-valve. The balloon on the ascent is the "La Faure," of France. The smallest balloon to take part in the race was the "Le Roiteler," of Belgium.

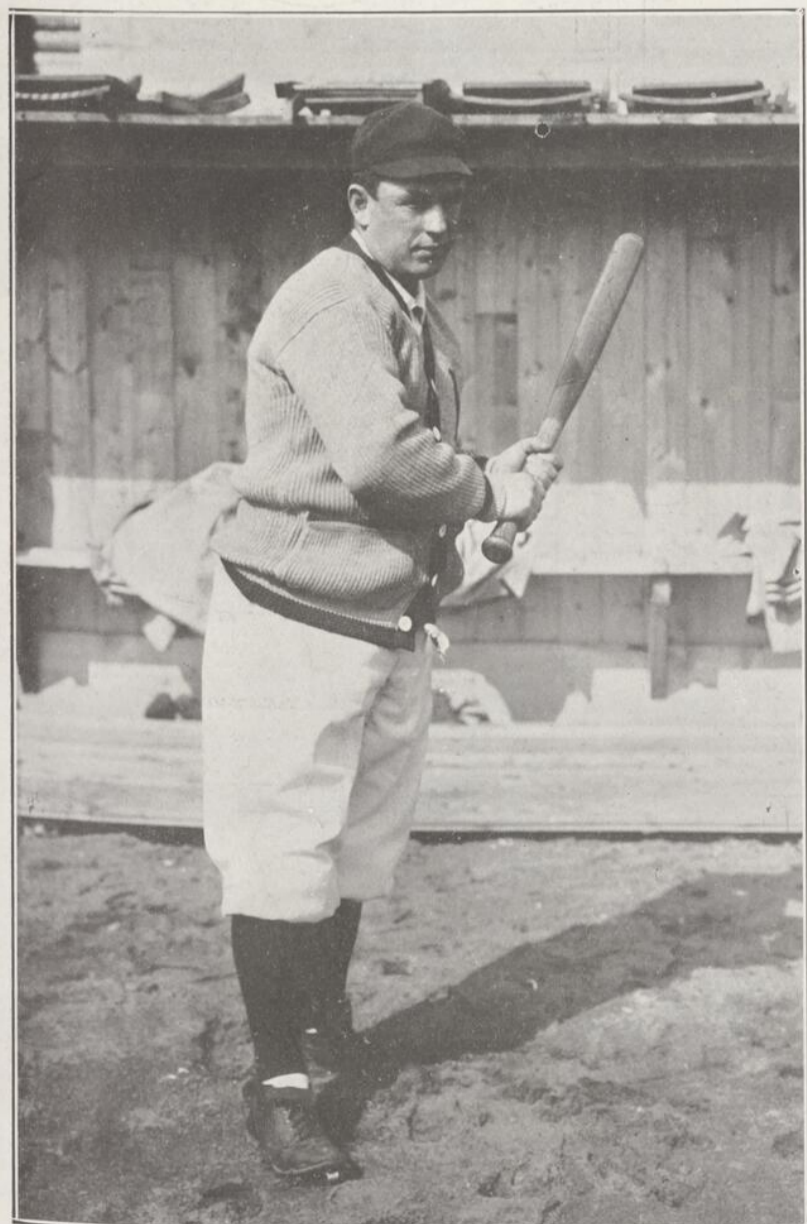
High Water on the River Gatineau; Striking Picture of the King and Queen; A New Sanitarium

HIGH WATER ON THE GATINEAU.—The spring and early summer of 1908 will be long remembered by those who lived contiguous to the great lakes and rivers of Canada, owing to the exceptionally high water which prevailed during this period, and which caused considerable inconvenience and hardship. This year the water in the St. Lawrence and Ottawa rivers and their tributaries was phenomenally high, far surpassing the records of the past 35 years. Until last week, abnormal con-

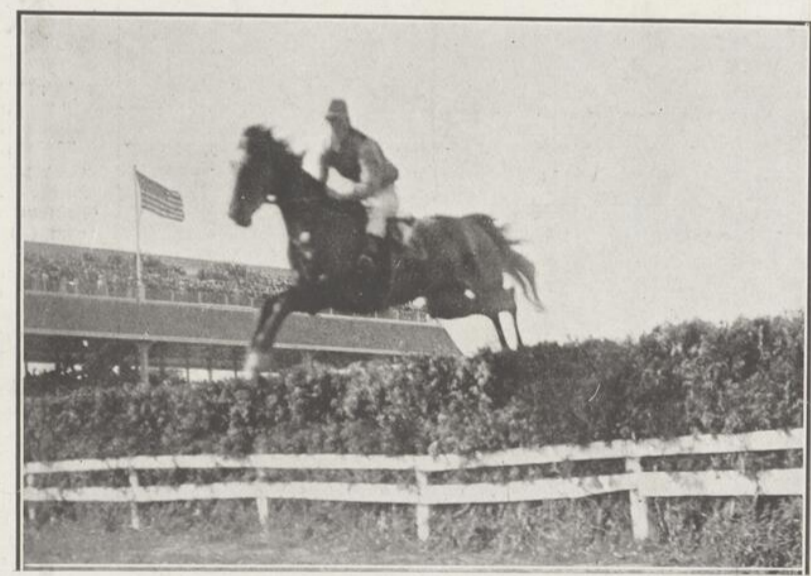
ditions prevailed all along the river-front, but the water is now going down, and its normal level will be reached in the course of a few weeks. Several pictures illustrating the remarkable conditions prevailing on the St. Lawrence this year appeared in The Standard a few weeks ago. Today a picture of the River Gatineau, one of the principal tributaries of the Ottawa, is published. It will be noticed that the river has over-spread the adjoining land, and that in volume it resembles a freshet.



HIGH WATER ON THE RIVER GATINEAU, QUEBEC.—The above illustration gives an excellent idea of the remarkable conditions which have prevailed on the River Ottawa and its tributaries during the past two months. Not in thirty years has the water been so high as it has been this year.



"CASEY AT THE BAT"—An interesting snap-shot of the captain of the Montreal Baseball Team, showing the peculiar manner in which he holds the bat.



THE SPRING MEETING OF THE MONTREAL JOCKEY CLUB AT BLUE BONNETS—A hurdle jumper taking a hedge in one of the steeplechase events of the recent meeting.

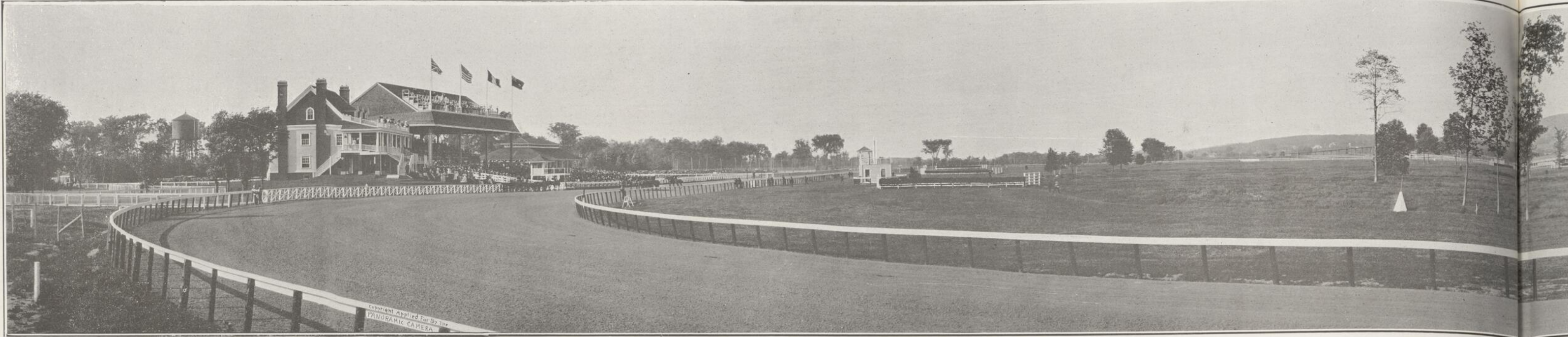


MINIMIZING THE RAVAGES OF THE "WHITE PLAGUE"—The new "Empire" Cottage given to the directors of the Consumptive Sanitarium on the mountain at Hamilton, Ont., and opened recently. (Photo by Percy E. McDonald, Hamilton.)



A RECENT PHOTO OF THE KING AND QUEEN.—This exceedingly "human" picture of Their Majesties was taken recently as Their Majesties drove from Buckingham Palace to witness the Naval and Military Tournament at Olympia. The Princess Victoria is seated in the carriage with Their Majesties.

The Anti-Racing Laws in United States Just Put Into Effect Make Blue Bonnets the Most Prominent Tack

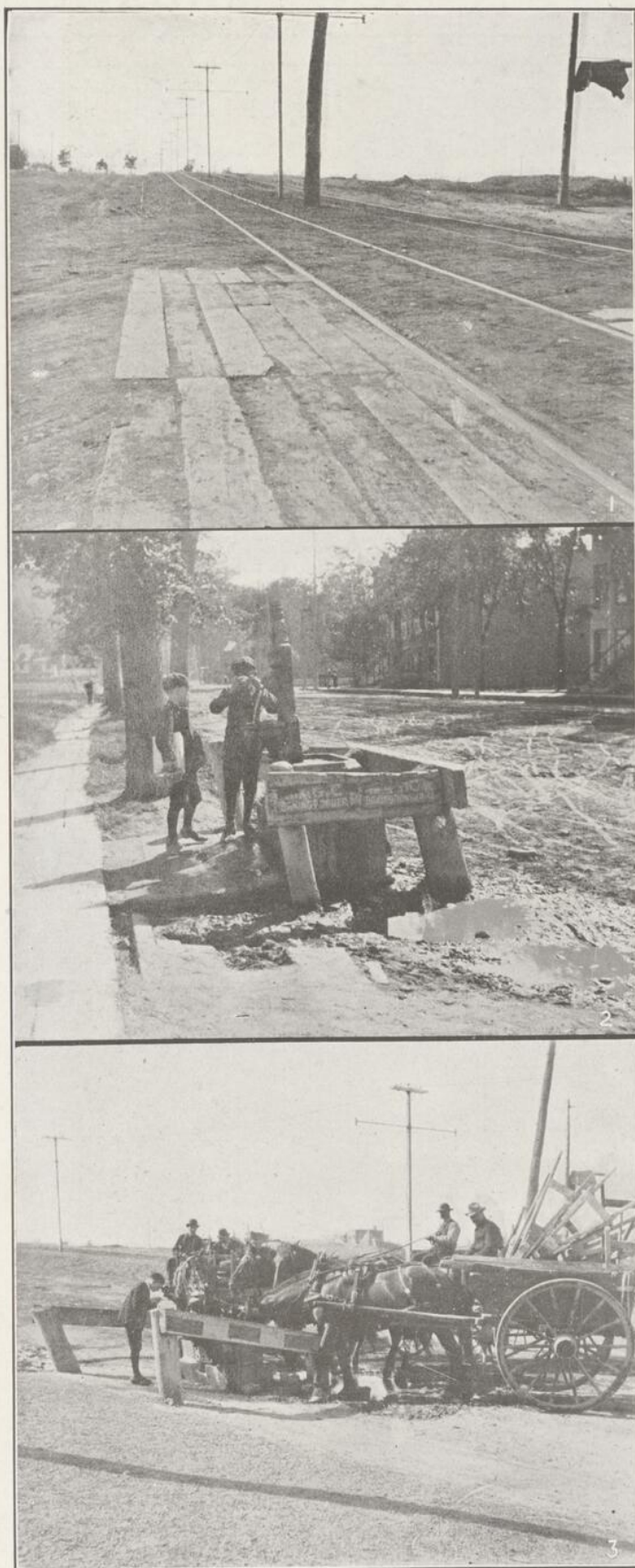


THE MONTREAL JOCKEY CLUB'S UP-TO-DATE RACE TRACK—A remarkable bird's-eye panoramic picture of the Blue Bonnets Race Track, Montreal, showing its beautiful location and surroundings. On the left of the illustration will be noticed the club house, grand stand, enclosure,



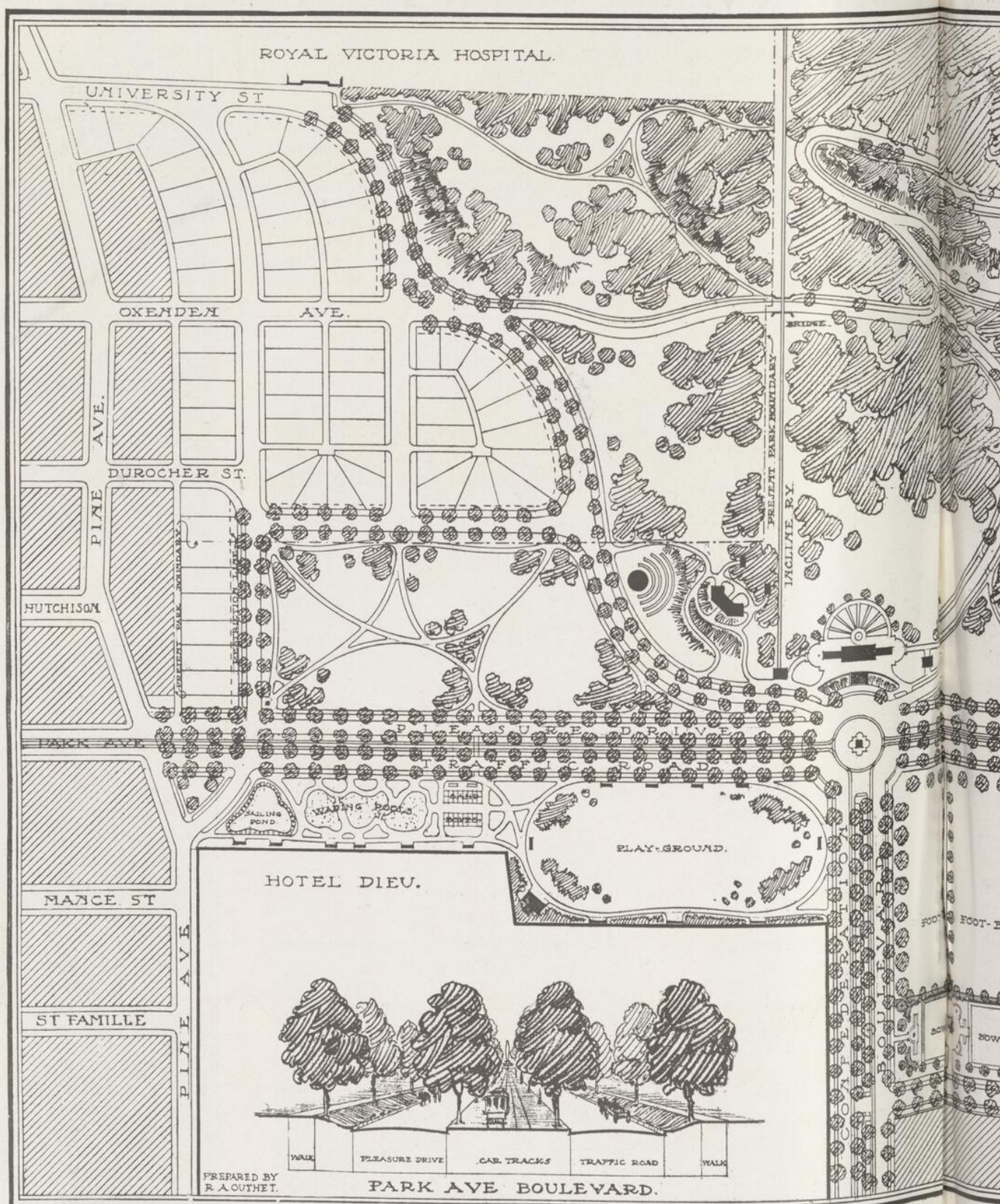
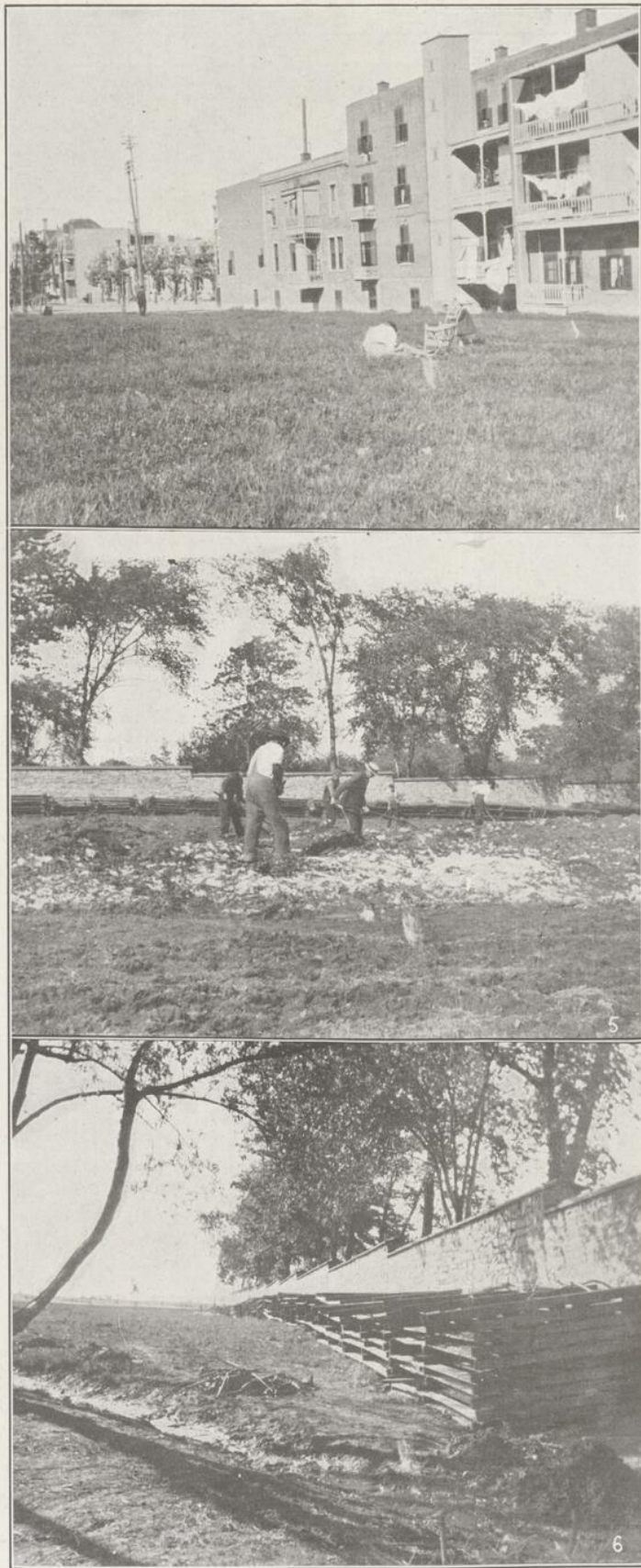
VICE-ROYALTY AT THE RACE TRACK—Scene in front of the club house at the Blue Bonnets Race Track, Montreal, during a state visit to the track by His Excellency the Governor-General and the Countess Grey. Their Excellencies have just alighted from the vice-regal carriage, which is being driven up the

50,000 School Children Now on Vacation Brings Up All Important Subject of Improving Playground



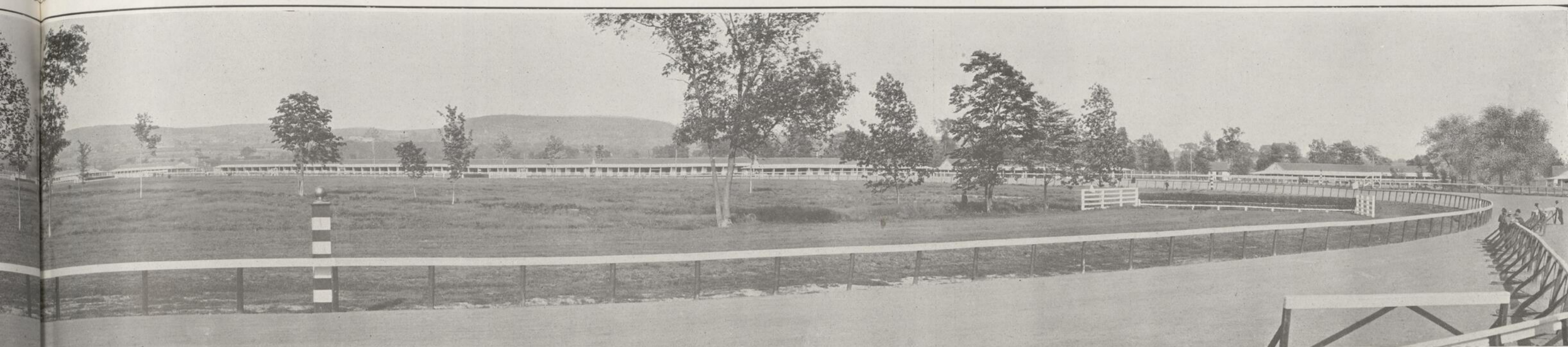
Improvement of Fletcher's Field.

THE illustrations on the lower half of this page show (1) the present condition of that portion of Mount Royal Park, Montreal, familiarly known as Fletcher's Field; and (2) the manner in which it may be improved in appearance should the city decide to carry into effect certain recommendations made not long ago by the Province of Quebec Architects' Association. Illustration No. 1 shows the undeveloped state of Park avenue above Duluth, and the need which now exists of grass strips and tree planting. The summit of the hill, too, should be lowered. Nos. 2 and 3 show the disagreeable drinking fountain which at present disfigures Park avenue by its unsightly appearance and advertisements. The ground around this fountain is always covered with pools of water. No. 4 shows the need of good houses fronting on the Park. The balconies, enclosed stairways and clothes' lines which form conspicuous features of the houses in the illustration, are a disfigurement to the Park. Nos. 5 and 6 show the civic "dump" and "M. S. R." fences which spoil the appearance of that portion of Fletcher's Field lying between Park avenue and the Hotel Dieu. Shrubs, vines, flowers and seats should take the place of the "fences," and the dump should be levelled. The changes and improvements suggested by the Architects' Association include: (1) the expropriation of the houses in illustration No. 4; (2) the extension of Durocher and University streets and Oxenden avenue as shown in the plan; (3) the making of a "Plaza" or "Place" at the junction of Park and Duluth avenues, and the erection in its centre of either a fountain or a monument; (4) the connection of Mount Royal Park with Parc Lafontaine by a parkway 140 feet wide; (5) the laying out of the ground on the east side of Park avenue between Mount Royal and Pine avenues in playgrounds, football, lacrosse and cricket fields, and tennis and bowling courts, and the planting of rows of trees, so as to form effectual screens between each of the playing grounds, and also between the playing grounds and the houses facing the Park on Esplanade avenue.

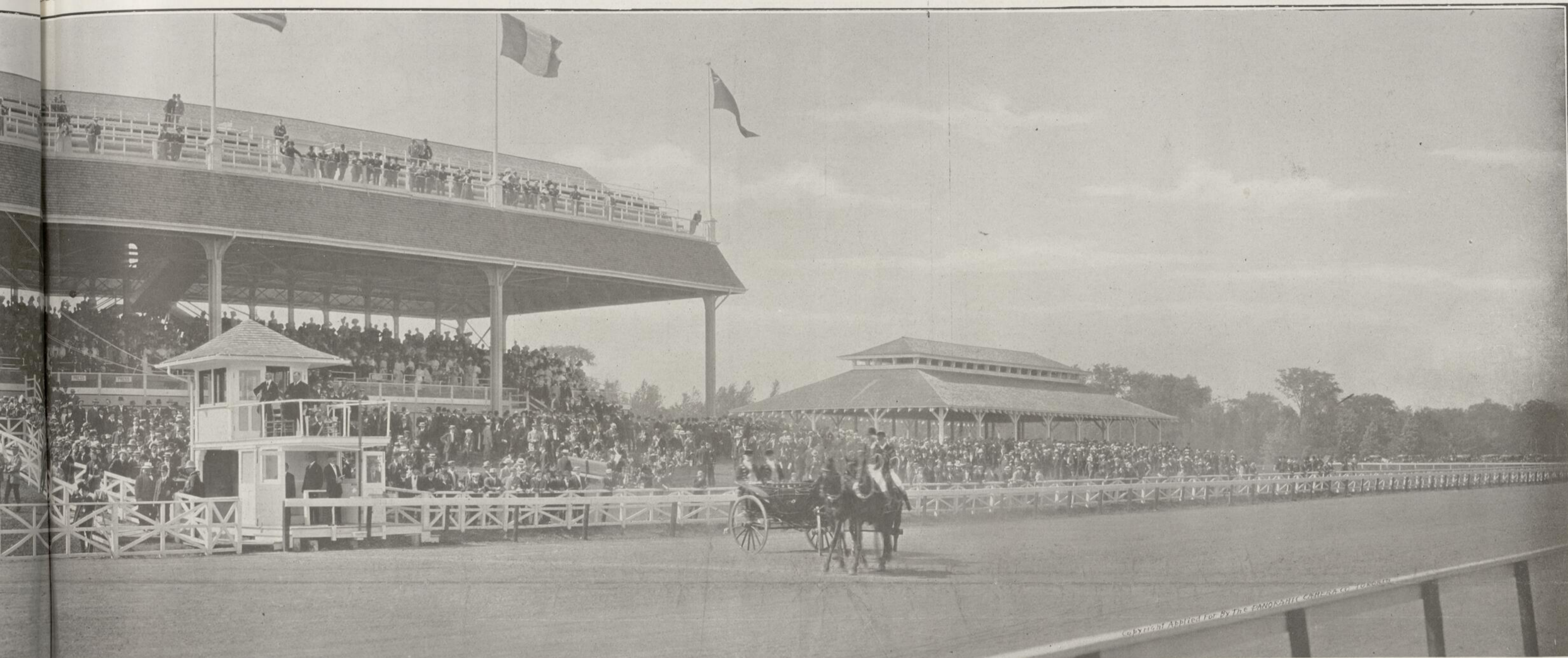


IMPROVEMENT OF FLETCHER'S FIELD—The above sketch embodies the recommendations of the Civic Improvement Committee. Were they carried into effect, a complete transformation of this portion of Mount Royal Park would result.

ent Tack on the Continent of America; Remarkable Panoramic View of Montreal Jockey Club's Track

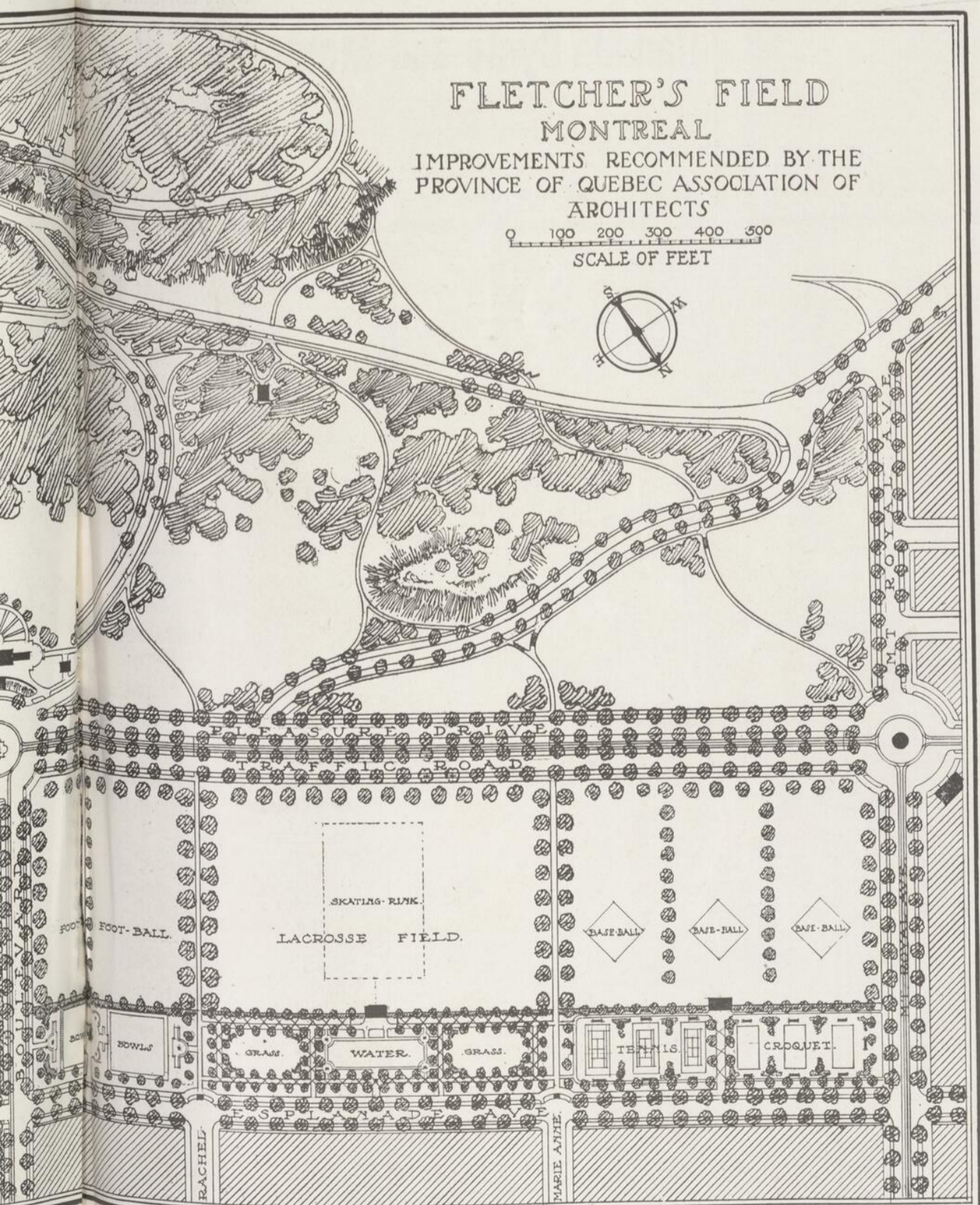


and stand enclosure, judges' stand, and betting ring. Within the inner oval are the field look-out stand, the flat course and the steeplechase course. On the right are the stables, and in the distance Mount Royal. (Photo by the Panoramic Camera Co. of Canada, Toronto.)



carriage, whirled up the track a short distance, and Earl Grey is talking to Brigadier-General Buchan, C.M.G., A.D.C., and Sir Montagu Allan. The Countess Grey stands a little to the left, and holds a bouquet of flowers. (Photo by the Panoramic Camera Co. of Canada, Toronto.)

und Accommodation of City; Scheme Now on Foot to Improve and Systematize City's Whole Park System



the Civic Improvement Committee of the Province of Quebec Association of Architects for the improvement of Fletcher's Field. The result would be one of the most beautiful and utilitarian Parks in the world.



IMPROVEMENT OF FLETCHER'S FIELD—Of the above illustrations, No. 7 shows a modern drinking-fountain such as is needed on Park avenue to replace that seen in illustrations 2 and 3. No drinking cups are associated with this fountain, which is built on hygienic lines. No. 8 shows a number of houses at the corner of Pine and Park avenues, which should either be expropriated or built against with good houses fronting on the Park. The total removal of the first house has been recommended. No. 9 gives one an idea of the effective manner in which the unsightliness of illustrations 5 and 6 might be overcome, and the stone wall of the Hotel Dieu hidden behind a curtain of vines, shrubs and flowers.



IMPROVEMENT OF FLETCHER'S FIELD—The above illustration gives a splendid idea of the change that might be effected in the appearance of Park avenue by the planting of trees and the laying of grass strips and cement walks on either side of the roadway. Compare this picture with illustration No. 1, which shows the present condition of the avenue.

Some Illustrations of Interest to the Lady Readers of The Standard



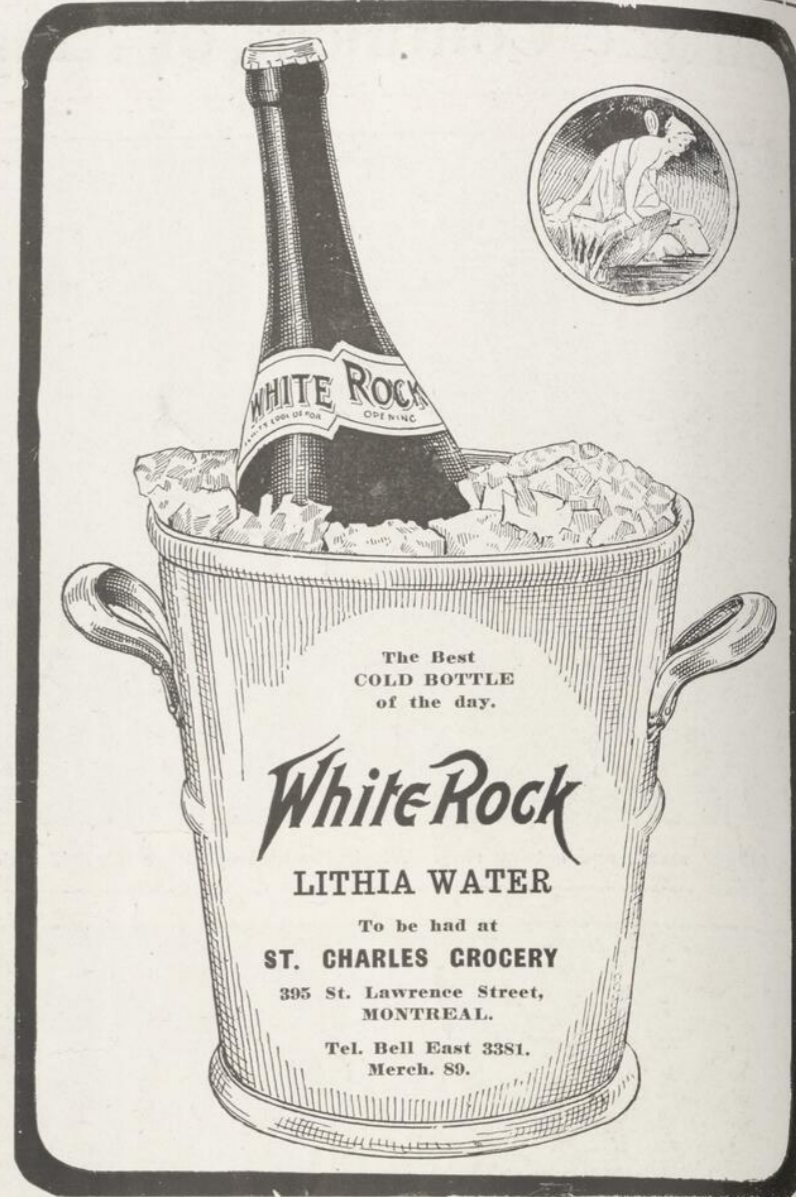
CANADIANS PRESENTED AT COURT—Mrs. E. G. Prior, wife of Lieut.-Col. Prior, of British Columbia, who was presented at Their Majesties' recent Court at Buckingham Palace, London.



PROMINENT SOCIETY HOSTESSES IN THE CAPITAL OF CANADA—Mrs. Wm. Patterson, wife of the Minister of Customs.



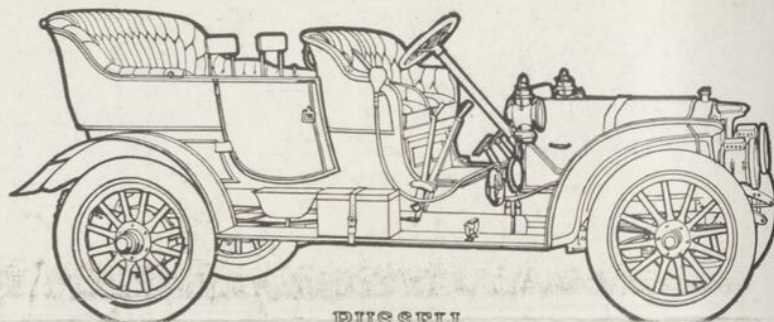
REPUBLICAN CANDIDATE FOR PRESIDENCY—Secretary Taft, who was nominated last week for President of the United States by the Republican Convention in Chicago.



LONDON'S SLUMS.

Despite the great amount that has already been achieved with regard to housing reform, the slum problem is still far from a solution. In London alone there are nearly 300,000 one-roomed dwellings, and in many of the one and two-roomed "homes" there will be six and eight children in addition to the parents.—Elizabeth Sloan Chester, M.B., in "Westminster Review," London.

RUSSELL and RELIABILITY



A million dollar plant of six hundred brain power—think of it, six hundred trained workmen a unit in resolutely concentrating their mind and muscle into one defined channel—the production of a good, sound and reliable Motor Car.

That's our guarantee. Expert skill in building and minute care in selection of material, thoroughly demonstrate efficiency to be the key-note of RUSSELL character. The motors are powerful, but quiet and smooth running. The cooling and oiling are properly provided for and friction reduced to a minimum. The transmission gears are of the selective type, three speeds forward and reverse. All gears and shafts of special nickel steel. The clutch and brakes are positive in action and easy to disengage.

Canada Cycle and Motor Co., Ltd.

Factories, West Toronto, Canada. Direct Factory Representative, F. C. PENNALL, At Local Agency: EASTERN AUTOMOBILE CO., 17 and 19 University St.

A Comfortable Sanitary Mattress



This illustrates the Marshall Sanitary Mattress—the only sanitary and really comfortable mattress made. It's fitted with over 1000 specially tempered steel springs. Each of these springs is enclosed in a separate pocket so that each works independently and cannot get out of order. The mattress is upholstered with a layer of chemically sterilized curled hair. Ventilators, covered with fine brass wire gauze, are placed at either end so that the slightest movement of the occupant causes a current of air to pass through. Try this mattress for 30 days and if it isn't the finest mattress you've ever slept on, return it and we will refund your money—price \$25.

The Marshall Sanitary Mattress Co., Renaud, King & Patterson, Limited, Exclusive Selling Agents for the Province of Quebec, Corner of St. Catherine and Guy Streets, Montreal.



One of 2 Million

Over two million men have learned the easy, safe, comfortable way of self shaving. The argument of satisfied numbers must appeal to you.

Gillette Safety Razor

consists of a triple silver plated holder and a 12 double edged flexible blades, in velvet lined leather case. Price \$2—at all leading Jewelry, Drug, Cutlery, Hardware, Sporting Goods and Department Stores. Write or ask your dealer for free booklets. If he cannot supply you, write us. GILLETTE SAFETY RAZOR CO. OF CANADA, LIMITED OFFICE AND FACTORY - MONTREAL.

RADNOR

"THE WATER OF THE EMPIRE."

Endorsed by Royalty.



THE RADNOR WATER COMPANY

HAVE BEEN APPOINTED BY SPECIAL WARRANT PURVEYORS TO

His Royal Highness The Prince of Wales

Why Bass' Barley Wine

Is the Cheapest Malt Extract.



We're going to prove to you that, at 30 cents a bottle, Bass' Barley Wine is the cheapest extract of malt and hops ever sold.

The price of most malt extracts is 25c a bottle, some sell for 20c, others as low as 15c.

Now if you pay 25c for a bottle of ordinary malt extract and Bass' Barley Wine contains three times more nutritive value, which is the cheaper?

Many of the so-called malt extracts are nothing more nor less than by-products of the brew.

Of course they contain a certain percentage of nutritive value, but very little.

These extracts are then bottled and, naturally, are in a process of fermentation.

To stop fermentation, preservatives, such as salicylic acid and other preparations, are used.

Ask your doctor what effect salicylic acid will have on your kidneys.

Bass' Barley Wine is made from pure barley malt,—not a by-product,—and hops.

It is aged for three years in casks to remove fermentation and when bottled requires no preservatives to keep it for an unlimited period.

When we say that Bass' Barley Wine is the finest production of Bass & Co., the greatest brewers

in the world, this is the highest praise we can give it.

You don't take malt extracts merely for the pleasure of drinking them, but for the amount of good they're going to do you.

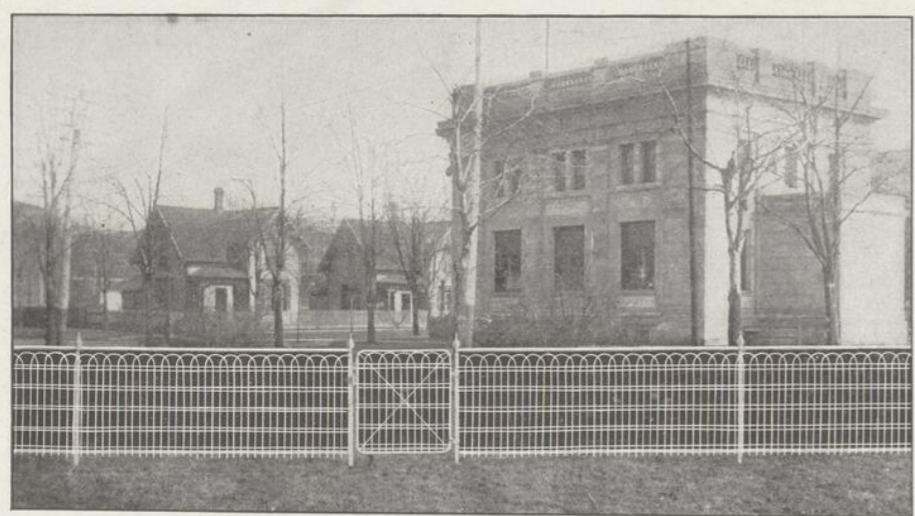
Shall you then let a difference of 5c stand in the way, when that difference will give you Bass' Barley Wine with three times more nutritive value than any other malt extract?

Insist upon having Bass' Barley Wine at 30c a bottle, and if your druggist won't supply it, write us.

S. B. Townsend & Co. - Montreal.

Sole Agents for Canada.

No. 307



Appearance and Durability! That's what you buy an Iron Fence for. Appearance—embracing Style and Finish. Durability—based on workmanship and materials.

You get the maximum of Appearance and Durability in Page White Fence.

You get the most modern styles for Lawns, Farms and Ranches, finished beautifully in all styles and colors, for Page Wire Fences are the standard.

And you get a Fence made of high carbon wire—galvanized and then painted white—a tougher, stronger, more durable fence than any other fence.

A Page White Fence costs you no more than the other "look like" kinds—you might just as well buy the Best.

Write for Illustrated Booklet.

FREE

We have a very fine little book illustrated handsomely with cuts of the latest style Page Wire Fence and 1908 prices which we will be glad to send you with our compliments upon receipt of your name and address on a postal. Write for it to-day as the edition is somewhat limited. Address.

PAGE WIRE FENCE CO. LIMITED

505-517 Notre Dame St. West, Montreal.

Largest Gate and Fence Manufacturers in Canada.



THE ORIGINAL AND ONLY GENUINE

BEWARE OF IMITATIONS SOLD ON THE MERITS OF MINARD'S LINIMENT



If you keep Byrrh Tonic Wine in the house you have something to meet every emergency of fatigue or sickness.