

COLLECTION ALBERT TURCOTTE.



Valse Expressive

POUR PIANO ***

*** de Ch. A. MAGER.

50 Cents

MONTREAL

ALBERT TURCOTTE

EDITEUR

Valse Expressive

C. H. A. MAGER

Prélude

Moderato.

f

f dimin.

mf

tr

mf vivo

Ad lib. Delicato

mf

*Ped. * Ped.*

Un poco vivo

Espress.

Valse

p

Elegante.

p

cresc.

f

p dim.

riten. a tempo.

rit.

p

mf delicato

Musical score system 1, featuring piano and bass staves. The key signature has three sharps (F#, C#, G#). The system includes dynamic markings *p*, *mf*, and *dimin.*.

Musical score system 2, featuring piano and bass staves. The key signature has three sharps. The system includes the instruction *dolce e cantando.*, a triplet of eighth notes marked with a '3', and the instruction *poco rit. e espress.*. Dynamic markings include *p*.

Musical score system 3, featuring piano and bass staves. The key signature has three sharps. The system includes the instruction *a tempo*, dynamic markings *p* and *f*, and performance directions *cresc molto* and *e accel*.

Musical score system 4, featuring piano and bass staves. The key signature has three sharps. The system includes the instruction *animato.*, dynamic markings *p*, and performance directions *calmato.*, *rall*, and *a tempo.*. Additional markings include *dimin e* and *ritenuto molto*.

Musical score system 5, featuring piano and bass staves. The key signature has three sharps. The system includes the instruction *élégante* and dynamic markings *pp delicato* and *p*.

Musical score system 6, featuring piano and bass staves. The key signature has three sharps. The system includes dynamic markings *mf*, *p dimin.*, and *f. ten*, and the instruction *fieramente.*

schierzando

ten *sf* *p subito* *f. ten*

animato *con forza* *tempo*

dimin *p delicato* *f. ten*

schierzando

ten *sf* *p subito* *f. ten*

animato *con forza* *espress* *più mosso*

ff *dimin* *pp* *Una corda.*

mf *tre co da!* *sempre cre-* *scen* *do*

f

con fuoco

ten *ten*

scherzando *animato*

sf *subito* *p* *ten* *f* *decresc subito*

1^a *espress* 2^a *1 tempo* *espress*

p *dolce* *p*

élégante

p

a tempo

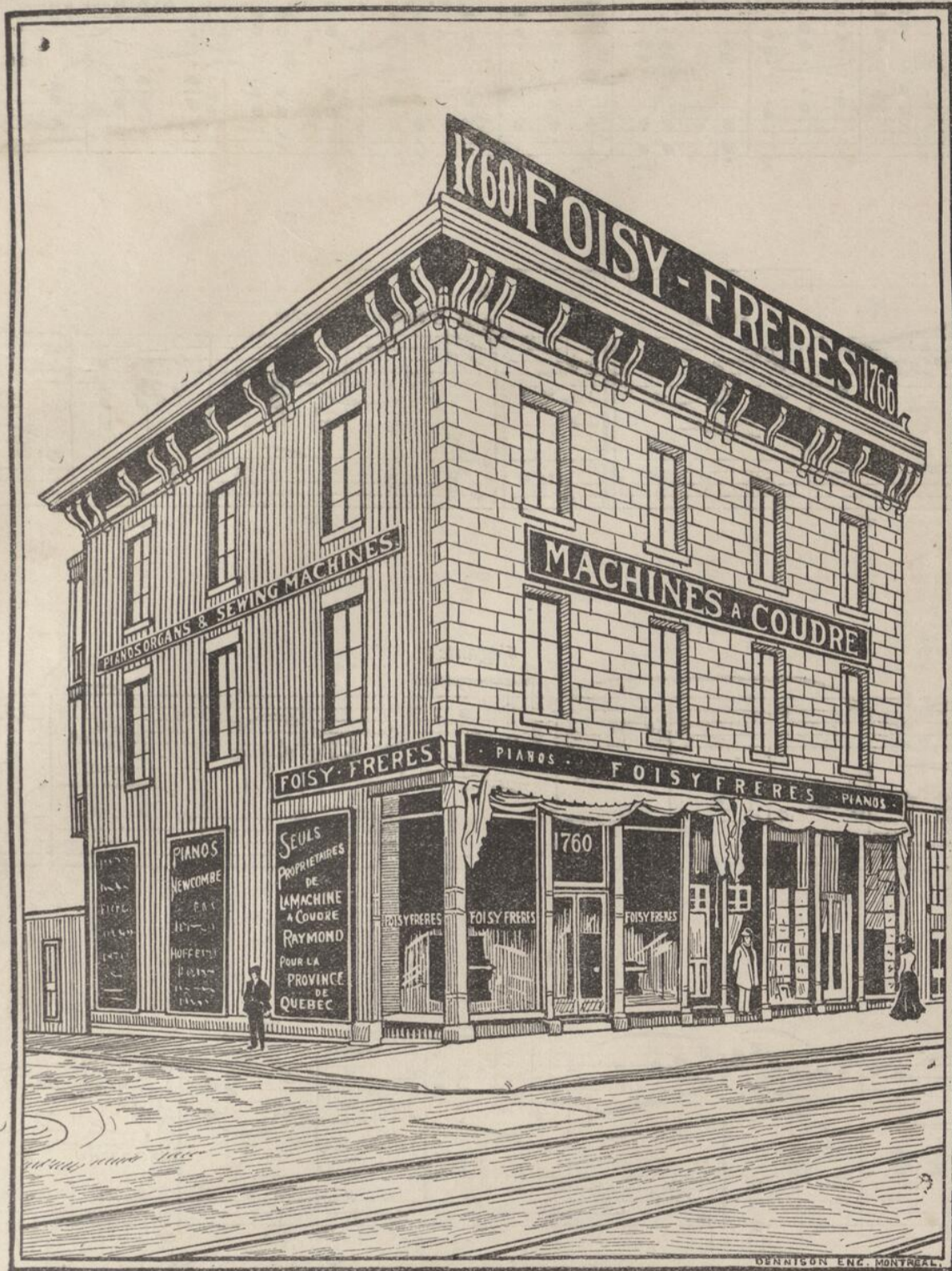
mf *sostenuto* *dim in poco* *a poco*

Ped. * *Ped.* * *Ped.* * *Ped.*

smorzando *accelerando*

pp. *riten*

Ped. * *Ped.* *



MAISON ETABLIE EN 1879.

Telephone Bell Est-1644

F OISY
FRÈRES

.....PIANOS, ORGUES.....

MACHINES à COUDRE,

Musique en Feuilles, Instruments de tous genres, etc., etc.

1760 et 1766, rue Ste-Catherine,

Coin Sanguinet, **MONTREAL.**