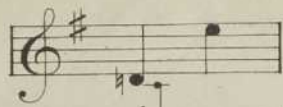
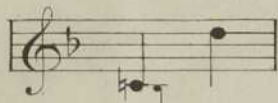


1355

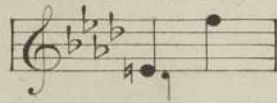
IN E MINOR



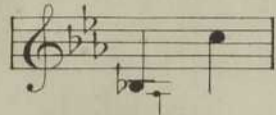
IN D MINOR



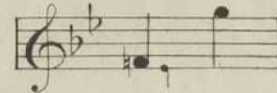
IN F MINOR



IN C MINOR (ORIGINAL)



IN G MINOR



ASTHORE

Song

Words by Clifton Bingham

Words by

Music by

H. TROTÈRE.

Composer of "IN OLD MADRID", "LEONORE", "ZANITA" &c.

COPYRIGHT FOR ALL COUNTRIES.

PRICE 2/- NET OR 50 CENTS.

London
J. B. CRAMER & CO 201, REGENT STREET, W.

NEW YORK, NOVELLO, EWER & CO

PERMISSION IS GRANTED TO SING THIS SONG IN PUBLIC WITH THESE WORDS ONLY.

ANGLO-CANADIAN MUSIC PUBLISHERS ASS'N. Ltd.
22 & 124 YONGE ST.
TORONTO.

COPYRIGHT 1893 BY J. B. CRAMER & CO



Handwritten signature: H. Trotère

783.6692
T3582a
1893
MUS-ETR

ASTHORE.

(DARLING.)

SONG.

Words by
CLIFTON BINGHAM.

Music by
H. TROTÈRE.

Andante patetico.

VOICE.

O 'twas

PIANO.

mf *L.H.* *rall.*

con dolore

sweet of old, When our love we told Where the waves sing to the

shore; But it's sad for me Now be . side the sea, For you're far from me, as .

- thore. Ah, it's bright no more As in days of yore, And the

years go creep - ing by, — For it's far a - way That you

are to day And it's all a - lone am I!

Sad of heart am I! — All a - lone am I! But the

60171

Moderato con amore.

waves still are sing - ing to the shore, — As they sang in the hap - py days of

yore, — And my heart is for ev - er thine, love— Are you

p rall.

rall.

think - ing of me, as - thore? — And the night winds are whisp'ring to the

a tempo

a tempo

trees, — That they bring me a mes - sage o'er the seas — That your

cres.

f

cres.

heart is for ev - er mine, love! I am wait - ing for thee, as -

rall.

colla voce

Andante petetico.

- thore!

largo *mf* *a tempo* L.H. *rall.*

con dolore

'Twill be twi - light soon, And the sum - mer moon Will be

p

shin - ing on the shore; But the tears will rise To my

long - ing eyes, For it's you I miss, as - thore! But you'll think of me, Far a -

*Red. **

- cross the sea, And the hap - py days gone by; And I'll

f *Red. **

wait for you, With your love so true, Though it's sad of heart am I! _____

L.H. *pressez.*

pressez. *p rall. e dim.*

All a lone am I! _____ Sad of heart am I! But the

colla voce *dim.* *rall.*

Red. * *Red.* * *Red.* *

Moderato con amore.

waves still are sing-ing to the shore, _____ As they sang in the hap-py days of

yore _____ And my heart is for ev - er thine, love- Are you

p rall. *rall.*

a tempo

think - ing of me, as - thore? — And the night winds are whisp'ring to the

a tempo

f

trees, — That they bring me a mes - sage o'er the seas — That your heart is for ev - er

cres.

molto rall. *sempre ritard.*

mine, love! I am wait - ing for thee, as - thore! — I am wait - ing for thee, as -

colla voce

or

I am wait - ing for thee as - thore!

- thore! — I am wait - ing for thee, as - thore!

f *ff*

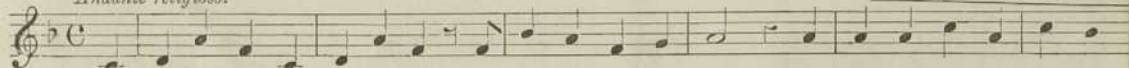
J. B. CRAMER & Co.'s NEW

THE OLD SONGS.

Words by CLIFTON BINGHAM.

Music by

Andante-religioso.



There is no heart in all the earth that hears their accents ring, That is not better for the

No. 1 in E flat (compass B to E).

No. 2 in F (compass C to F).

No.

Copyright, 1893, by J. B. CRAMER & CO., for all countries.

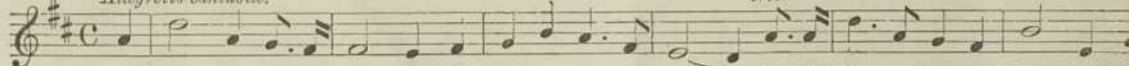
Words by CLIFTON BINGHAM.

TWO LEAVES.

Music

Allegretto cantabile.

cres.



A green leaf and a brown leaf Went drifting down the stream, When the happy hour of twilight

No. 1 in C (compass B to E).

No. 2 in D (compass C to F).

No.

Copyright, 1893, by J. B. CRAMER & CO., for all countries.

DONALD GRAEME.

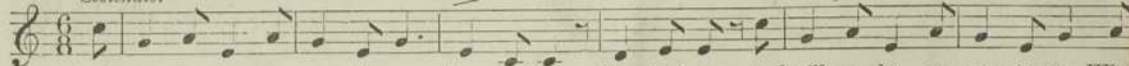
Words by EDWARD OXENFORD.

Music by MI

Sostenuto.

rit.

a tempo.



You're going far across the sea, Donald Graeme, Donald Graeme, And will you be as now to me

No. 1 in C (compass C to D).

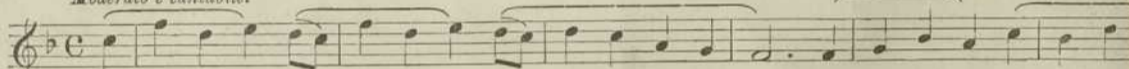
No. 2 in E flat (compass E

Copyright, 1892, by J. B. CRAMER & CO., for all countries.

LOVE'S APPEAL.

Words and Music by HAYDN GROVER.

Moderato e cantabile.



Come love with me, and we will be so happy all the day, The hours will fly so quickly

No. 1 in D (compass D to E).

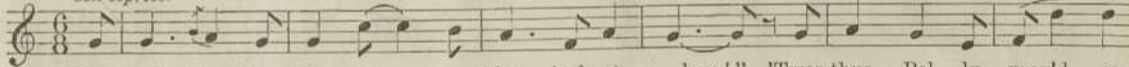
Copyright.

No. 2 in I

A SOUTHWESTER.

Written and Composed by EDWARD RIGHTON.

Con espress.



"Now God bless thee, Charley, my blue-jacket love!" 'Twas thus Polly pray'd as

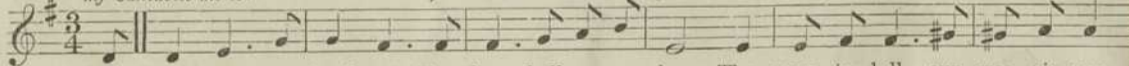
Copyright.

THE LIGHTS OF VENICE

Words by R. S. HICHENS.

M

mf Cantabile molto.



We hear not, we heed not, For love shall ever be, The song to lull our weariness,

No. 1 in G (compass D to E).

No. 2 in A flat (compass E flat to F).

No.

Copyright, 1893, by J. B. CRAMER & CO., for all countries.

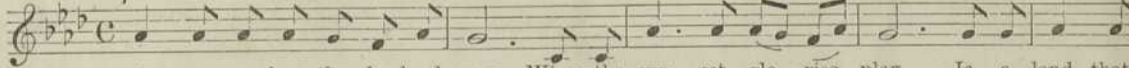
ABOVE THE SKYLAND SNOW

Written by H. P. STEPHENS.

Com

p

piu cres.



Over, above the sky-land snow, Where the sun-set glories play, Is a land that

No. 1 in F (compass A to D).

No. 2 in A flat (compass C to F).

No. 3 in

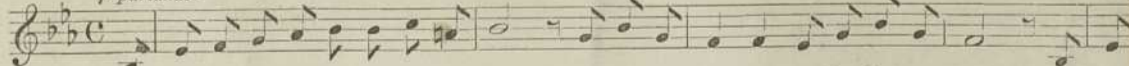
Copyright, 1893, by J. B. CRAMER & CO., for all countries.

THE VOICE OF THE SEA

Words by HORACE NEWTE.

Music by I

p parlando.



I love to sit beside the murmuring sea, The red sun sinking in the distant west, 'Tis then

No. 1 in E flat (compass B to F).

No. 2 in F (compass C to

Copyright, 1893, by J. B. CRAMER & CO., for all countries.

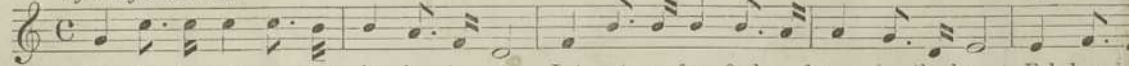
OF SUCH IS THE KINGDOM

Words by H. L. D'ARCY JAXONE.

Musi

mf Allegro moderato.

cres.



Shed not a tear as they rise in-to rest, Let not a fear find a home in thy breast; Follow,

No. 1 in A (compass A to C).

No. 2 in C (compass C to E).

No.

Copyright, 1893, by J. B. CRAMER & CO., for all countries.