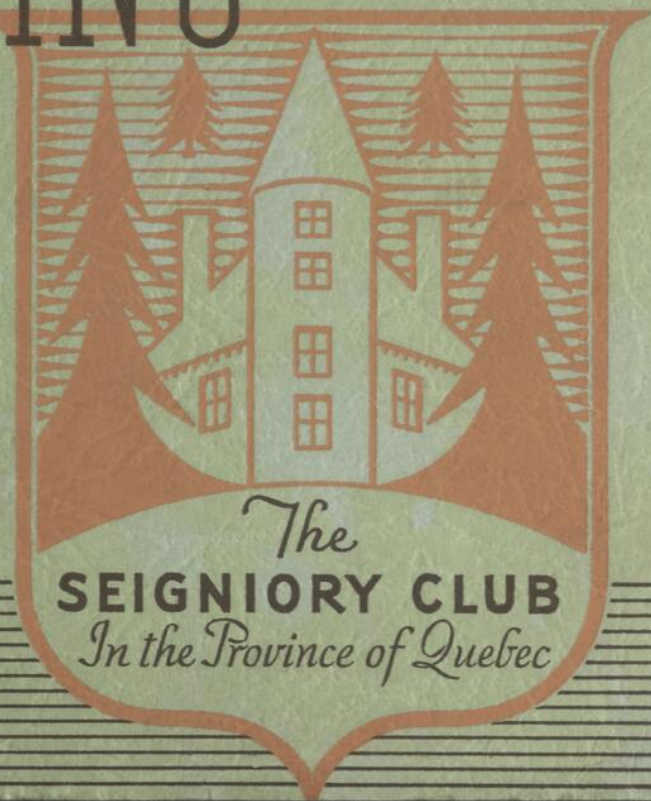
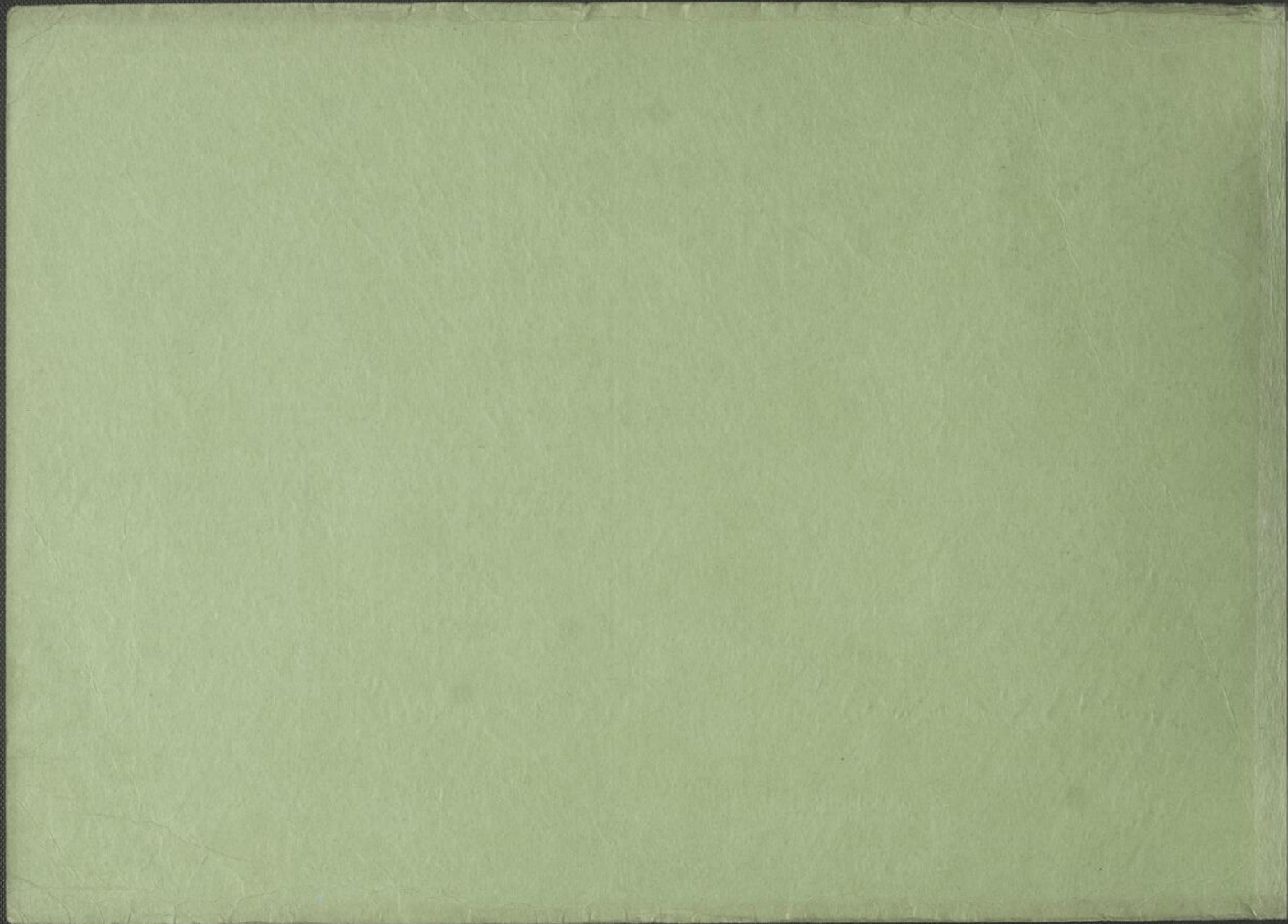


PRESENTING





10A3-14
5.00

THE SEIGNIORY CLUB

IN THE PROVINCE OF QUEBEC

THE photographs on the following pages and the information associated with them have been selected from *The Seigneur*, magazine of the Seignior Club. More than the written word they convey an accurate impression of the various phases of Seignior Club life. Only briefly are given the facts and figures concerning: membership in the Seignior Club, the Log Chateau and sports facilities connected with it, the art of log and of cabin craft and winter activities. Those interested in any of the individual features are invited to address inquiries to The Secretary, The Seignior Club, P.Q., or to its representatives, listed on page forty-eight



C O N T E N T S

	Page		Page		Page
Seignior Club	3	Guides	22	Skating & Curling	36
Membership Data	5	Hatchery	23	Ski-ing	38
Club Harbor	7	Fishing-Hunting	25	Valley Farm Trail	40
Children's Sports	8	Cabin Community	26	At the End of the Day.	42
Tennis	11	Main Dining Room	28	Road Map	44
Seignior Manor	13	Skeet & Trap	30	Sports Rates	46
Golf	14	Log Chateau	33	Log Chateau Rates	47
Horse Show	18	Sleighs & Dogs	34	Board of Governors.	48



The Log Chateau, residential building of the Seigniory Club

THE SEIGNIORY CLUB

✦ THE Seignior Club is an international year-round sports and country club community at Montebello in the Province of Quebec. Located on the north shore of the Ottawa river, eighty miles west of Montreal and forty-five miles east of Ottawa, it is an overnight journey from principal Eastern United States centers.

The club property embraces a hundred and four square miles of forest and lake country where fishing and hunting are privileges available only to club members. The Log Chateau, fronting on the Ottawa river, is the club's residential building with tennis, golf, swimming and all the winter sports nearby.

The advantages of membership in the Seignior Club are known and appreciated by many who find it readily accessible for week-ending or for holidaying on a larger scale in summer or winter. American and Canadian families own their own log cabin homes in the ever-growing community area, for each charter member acquires property upon which he may build a log cabin as simple or as elaborate as he chooses. Occasionally, in early summer or late fall, club members arrange for large meetings

and conventions of their friends and business associates at the Log Chateau, which is particularly well equipped in this respect with large rooms for general assemblies.

Perceptible even in a brief visit is the striking atmosphere that has grown during the eight years that the Seigniory Club has been in operation. The attractive design of the Log Chateau and subsidiary log buildings, the picturesque old manor house, formerly the home of Louis-Joseph Papineau, a famous figure in Canadian history, the tree-framed vistas up and down the Ottawa river, the wild life in the forest, game sanctuary and fish hatchery and many other things have all influenced the development of the Seigniory Club in the Province of Quebec

Pitch and putt golf on the lawns surrounding the club



MEMBERSHIP IN THE SEIGNIORY CLUB

Fuller details of which are obtainable on application to The Secretary, Seignior Club, P.Q., is subject to social and racial restrictions and is passed on by the Board of Governors. It is divided into four classes, outlined below, each on a family basis, and each carrying the privilege of hunting and fishing on the Seigneurie for members and their dependents, and for their guests when in their company. Members enjoy the free use of golf, swimming and tennis facilities; special rates on sailing, boats, riding and the hire of equipment, and a ten per cent discount on room and meal charges at the Log Chateau.

Charter Membership costs from \$2,500 to \$3,500 according to the location of the lot acquired by the member, the area being 10,000 square feet, though more may be purchased. It is assignable, subject to Club regulations, and is in perpetuity. No person can be elected a Charter Member unless undertaking to build, within a reasonable time, a house on the lot selected in the community area.

Life Membership costs \$2,000, is non-assignable, and involves no ownership of land. It may be transferred to Charter Membership, credit being given for fees already paid, and ends with death, except where special arrangements obtain in the event of death occurring within ten years of joining.

Term Membership costs \$1,000 and covers a period of five years. It carries an option for the first two years to transfer to either Charter or Life Membership at the fee charged for these at the time Term Membership is taken out. During the final three years the member has the privilege of transferring to either of these at the then prevailing fee. At the time of transferring the amount paid on account of Term Membership is applied against the new fee.

Ordinary Membership costs \$250 for initiation and \$125 annually. If a member in this class wishes to transfer at any time to Life or Charter Membership, the initiation fee can be applied against the fee for either of these classes of membership.

General Information regarding the Club is obtainable from the Secretary at the Club itself, from the Club's executive offices at 804 Windsor Station, Montreal, from the Club's office in the Waldorf Astoria, New York, or from agents of the Canadian Pacific Railway, who also represent the interests of the Club in cities of the United States.



BOATS AT THE SE

Cruisers at the annual regatta enliven the Seigniory Club's small harbor on the Ottawa river. Boats put in here frequently en route to Montreal or Ottawa by way of the Ottawa River Canal System



SEIGNIORY CLUB



Dinghy sailing on the Ottawa river facing the Log Chateau

✦ BOATS drawing up to nine feet reach the Seigniori Club from eastern Canadian and northern United States points by way of the St. Lawrence and Ottawa rivers. Locks at Ste. Anne de Bellevue in the Province of Quebec connect the two rivers on the east and the Rideau Canal from Kingston to Ottawa is the water route from the west. The Club harbor offers safe anchorage and there is a boat house equipped to re-fuel and effect repairs. Coming by air, sea planes or amphibians, and ski-equipped planes in winter, find landing facilities on the wide section of the Ottawa river opposite the Log Chateau. At all seasons the Seigniori waterfront is attractive



JUNIORS AT THE SEIGNIORY CLUB

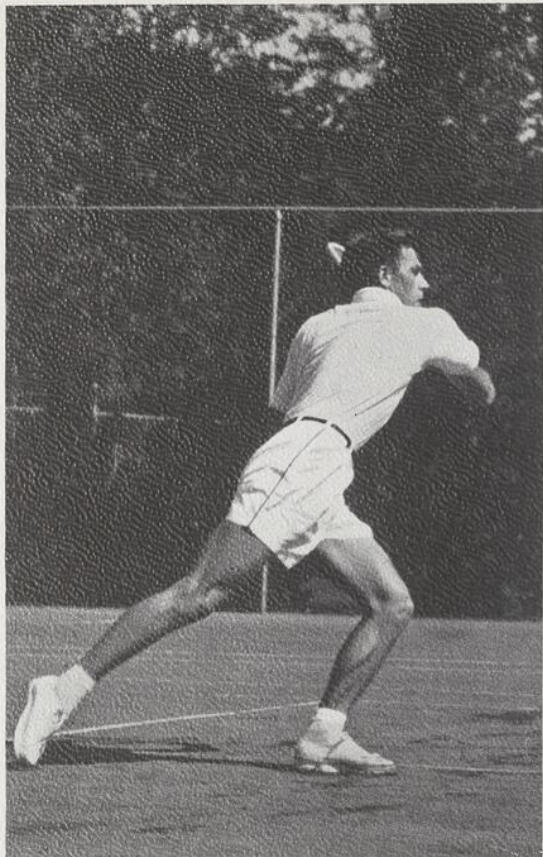
Properly instructed, youth learns how to ride

✦ VARIOUS generations at the Seignior Club find friends and contemporaries within the community. Progressive youth here can learn to ride and to swim, can be sent up in the club forest to be taught to fish and camp and handle a canoe, can take lessons in golf and practice tennis. In its earlier stages youngsterhood finds

swings, see-saw, pool and sand pile on a small playground with a nurse to take charge while parents are occupied. The club swimming pool, occupying a separate log building, measures 75 by 40 feet and is equipped with board and tower. Glass enclosed, it is bright by day with submarine lights to supplement the lighting at night. The water is purified and treated with ultra violet rays and comes from a mountain lake. The club stables supply horses for riding and for sleigh driving in winter

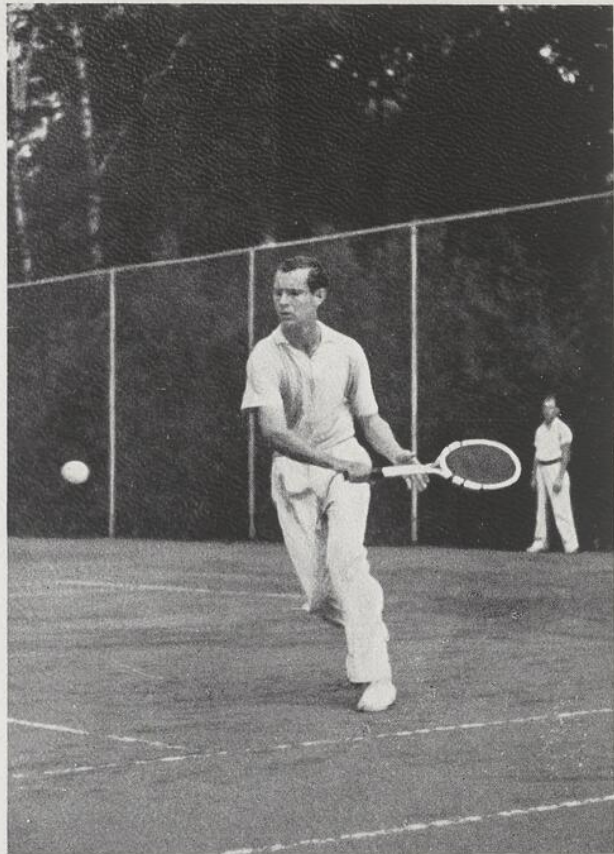
First swimming lessons
in the Seigniory pool





International Winners

Left, Frank Parker who has twice won the Seigniory Club's international tennis tournament. Right, Bill Reese, another international tournament winner



SPEAKING OF TENNIS...The Seigniory Club's six en-tout-cas courts, situated in a sheltered space between the Log Chateau and the Manor House, are annually the scene of tournament and exhibition games in which players famous in American and Canadian tennis participate. There are also members' and guests' tournaments, inter-city matches and, always, impromptu games. With golf or tennis in attractive surroundings, fishing, hunting or camping in the bush, many phases of Canadian life are known to members of the Seigniory Club

The tennis courts are near the Log Chateau





THE SEIGNIORY MANOR

✦ THE Manor House, a special retreat for members at the Seignior Club, and which guests may visit at special hours, was built in 1850 by Louis-Joseph Papineau, rebel and patriot of French-Canadian fame. The atmosphere of olden times is well preserved about the Manor and its furnishings renew memories of a gentle age. Members and guests coming to the club detrain at Montebello, the Canadian Pacific Railway north shore line station, which is five minutes by motor from the Log Chateau

Page 13

A delightful corner in the Manor



GOLF AMIDST

◆ THE Sports Club House overlooking the 18th green of the golf course is a cheery rendezvous during the summer and at the time of the winter holidays. The links, with eighteen interesting holes over rolling terrain and a succession of natural hazards and scenic effects, are one of the most enjoyable in the country. The Sports

Club House contains a lounge, men's and women's locker rooms and showers, tap room, pro shop. Light lunches and teas are served here during the summer season

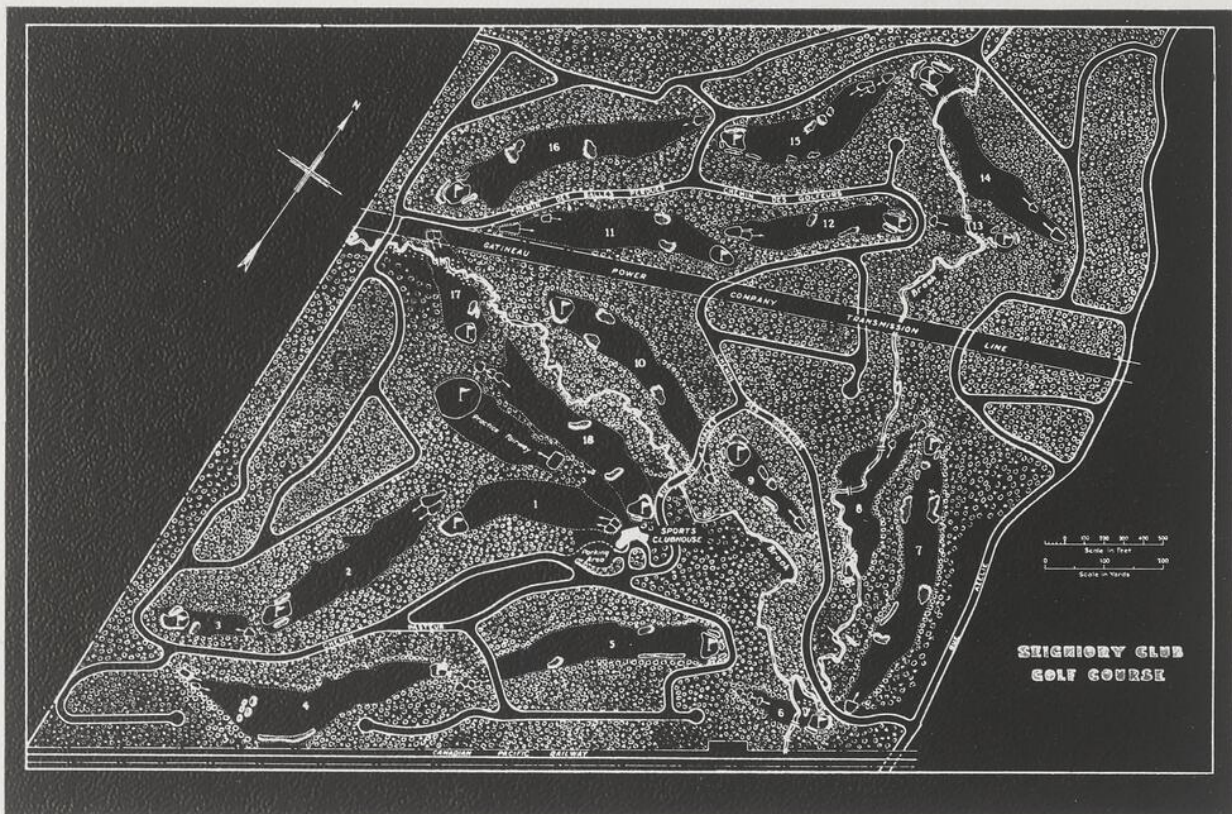
Gallery at the Seigniory's 18th green



W O O D E D S P L E N D O U R



The Sports Club House and first tee at the Seigniory Club



The 3rd fairway on
the Seigniory course



Men's Par 70
Ladies' Par 77

HOLE	NAMES	LONG COURSE		LADIES' COURSE	
		YARDS	PAR	YARDS	PAR
1	Bon Voyage	315	4	315	4
2	Les Buttes	405	4	390	4
3	Plateau	160	3	160	3
4	Panorama	480	4	480	5
5	Forest Glen	475	5	450	5
6	Little Ski Hill	150	3	150	3
7	Azelie	500	5	500	6
8	The Brook	295	4	295	4
9	Ravine	205	3	205	3
	OUT	2985	35	2945	37

St. Andrews Rules as adopted by the R.C.G.A. govern all
play except where modified by Local Rules

It is the duty of every player to replace the turf

HOLE	NAMES	LONG COURSE		LADIES' COURSE	
		YARDS	PAR	YARDS	PAR
10	Belle Vue	425	4	425	5
11	Gatineau	425	4	425	5
12	Bete Noir	370	4	350	4
13	Claire Fontaine	155	3	155	3
14	Bobsleigh	410	4	400	5
15	Mount Westcott	385	4	350	4
16	Deer Glade	470	5	470	5
17	All Carry	215	3	215	4
18	Chez-Nous	420	4	400	5
	IN	3275	35	3190	40
	OUT	2985	35	2945	37
	TOTAL	6260	70	6135	77



HORSE SHOW AT THE

Canada's militia cavalry are well represented at the Show

Near the ring backed by trees

◆ THE annual horse show at the Seigniory Club attracts entries from Eastern Canada and Eastern United States, bringing to the huge show ring, set in a superb natural theatre north of the Log Chateau, and to the half-mile

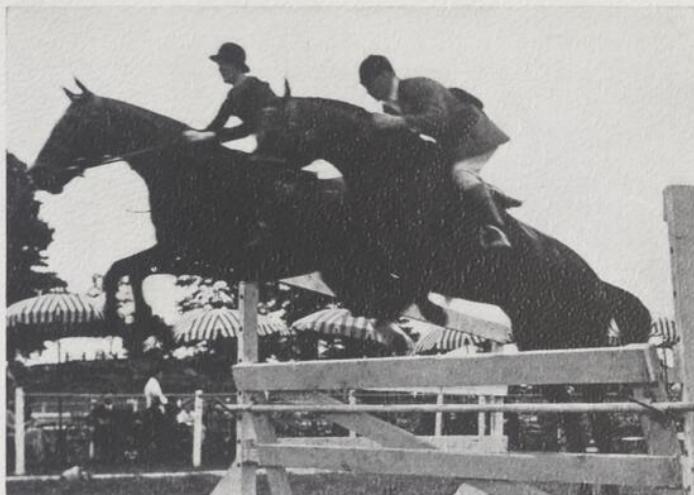


AT THE SEIGNIORY CLUB

ree-clothed Laurentian hills



Distinguished competitors
in the pair jumping event



track some of the leaders in the steeplechase and show ring world.

Members and guests motoring to the Club use Provincial Highway Route No. 8, see road map pages 44-45, which passes the Seignior Club

SEIGNIORY FOREST COUNTRY

◆ 65,000 acres of unspoilt fishing and hunting country, mountainous and heavily wooded, are the property of the Seigniori Club in the Laurentians north of the village of Montebello in the Province of Quebec. A game sanctuary is maintained

Left, Lake Commandant; right, camping party sets out



Hunting party
in the bush



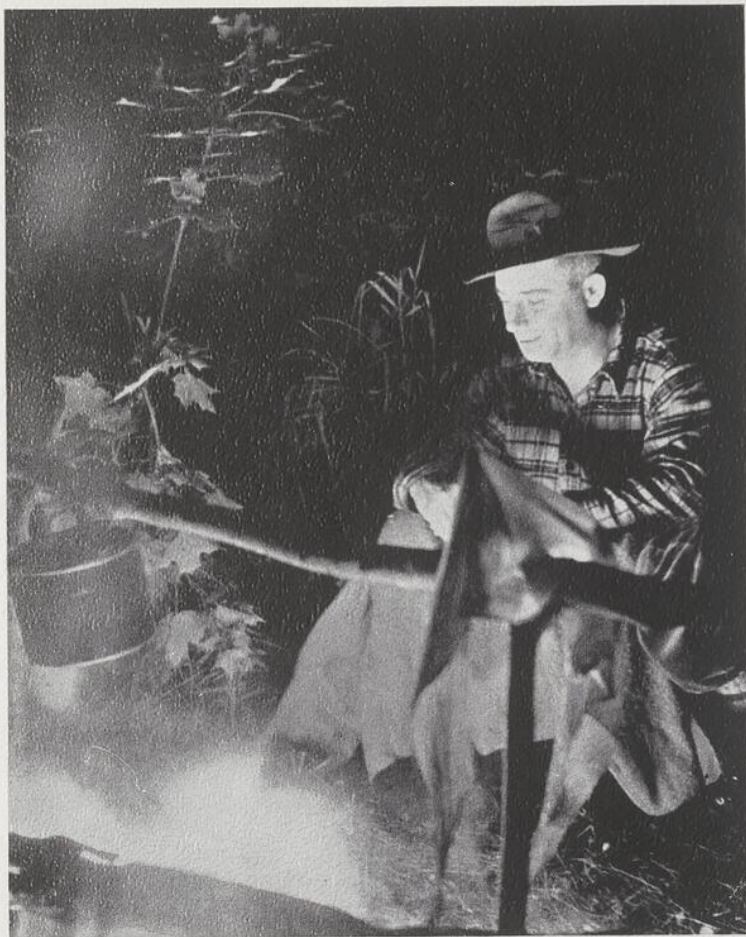
225-lb. buck shot at Seigniory Club



Guides are expert cooks



for a half mile on either side of part of the 15 mile motor road up from the Log Chateau; there are 180 miles of trail, bush telephone line, a fish hatchery, camp sites on Lake Commandant's 43 miles of shore line, three fire rangers' observation towers, fire fighting equipment, 12 rangers' cabins, a small corps of guides and rangers, 50 lakes and 4 streams



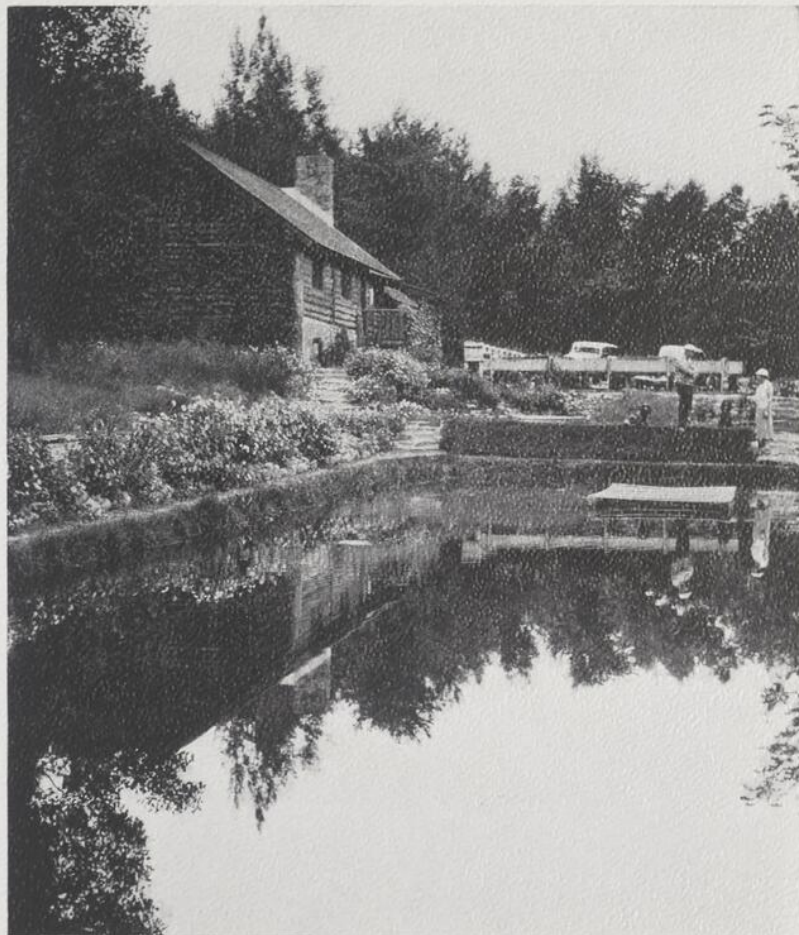
GUIDES

◆ EXPERIENCED guides are in the Seigniory forest country the year round with Pine Cottage as their base camp. Camp and sporting equipment, canoes or boats at the boat house near the terminal of the road to Lake Commandant, may be rented for fishing, hunting or camping trips. Camp sites have been cleared at attractive points and camp chores and cooking are efficiently handled by the guides. Club rangers guard against forest fires

HATCHERY

◆ THE Seigniory Club fish hatchery, eleven miles north of the Log Chateau, is an important factor in the program of stocking and conservation inaugurated in 1931. More than a million fish of various varieties have been stocked in closed waters, to allow the natural increase to evolve and multiply unharmed. Results have brought fishing conditions to a high standard in the lakes and streams of the club's forest country

Page 23





Fishing of all kinds is available to Seigniory Club members

FISHING ♦ HUNTING

♦ ONCE the hunting grounds of the Little Nation Indians of the Algonkian tribe, the vast estate now owned by the Seigniory Club still furnishes excellent fishing and hunting for its members and guests accompanying them. Black bass, rainbow, brown, grey and speckled trout have been stocked with satisfactory results; deer, partridge and woodcock hunting in the Autumn is usually good. Fishing and Hunting licenses are required of non-residents of the Province of Quebec and are obtainable from the Club Secretary



THE CABIN COMMUNITY

✦ THE cabin community area at the Seigniory Club includes twelve miles of roads winding about the mountain above the golf course and overlooking the Ottawa river. Police and fire protection are constantly maintained. Food supplies of all varieties are available to cabin residents through the Log Chateau commissariat.



This cabin's log and rough stone work harmonize with surroundings

Cabin construction is carried out for members by the Seigniory Club construction department. Standard plans are available or special plans may be prepared for individual families. Formerly, all building was carried out in logs but now pleasant variations in stone or clapboard meet the high standard of permanency required. The cabins here, built for Seigniory Club members, demonstrate interesting development in design and construction with logs. Nordic and Swiss characteristics are discernible in daring touches of color on the butt ends and in the decorative curve of the log ends; but, on the whole, new schemes have been evolved in designing cabins of this sturdy, rugged material

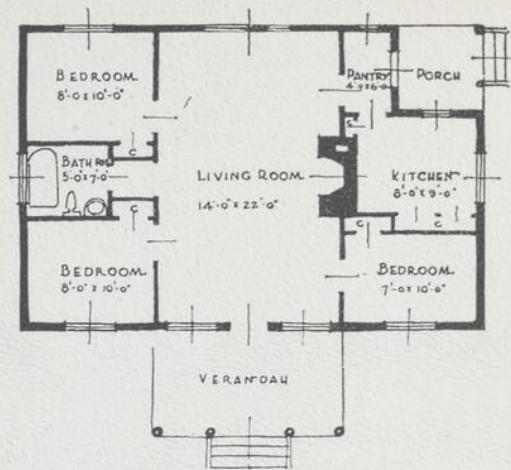
Club members' cabins are insulated for year round occupancy





The Log Chateau
Dining Room

◆ DESIGNED for a small family, this cabin, from a series of standard plans prepared by Messrs. Lawson & Little, architects, Montreal, can be executed for members by the Seigniori Club Construction Department



The high pitch to the roof provides an interesting sloping raftered ceiling for the living room of this cabin

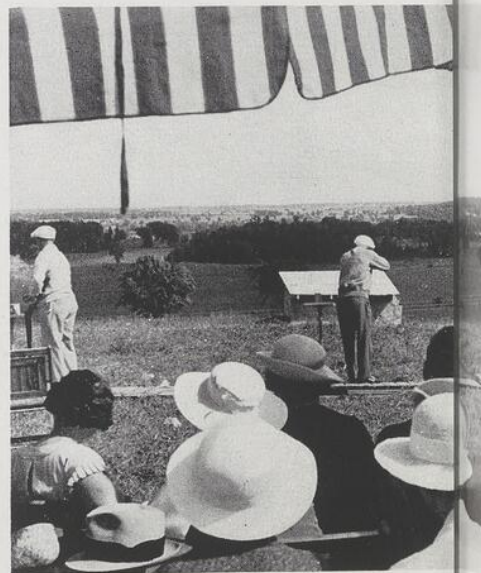
SKEET



Targets are thrown from two traps instead of one in skeet

TRAPSHOOTING

✦ SKEET and trap shooting provide excellent practice for members and guests at the Seigniory Club before the hunting season opens on the 104 square miles of club property. A splendid site equipped with a double skeet and trap layouts is located near the club's horse show grounds. Vividly expert shooting features the annual



inter-city gun tournament usually held in early summer at the Seigniory Club. Not illustrated but also available at the club are badminton, billiards, ping-pong, canoeing, dancing, pleasant walks in the vicinity



Setting on a hillside overlooking the Ottawa river valley

Tournament scores at the Seigniory Club skeet field





The Log Chateau of the Seigniory Club in winter setting

LOG CHATEAU OF THE SEIGNIORY CLUB

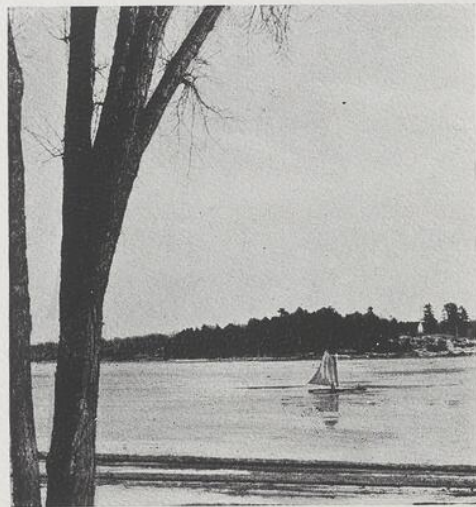
✦ WITH the advent of winter the Log Chateau, the Seignior Club's main building, takes on a new and delightful character in its sylvan surroundings. Star-shaped, built completely of logs and radiating from a central lounge, the Chateau contains 228 rooms, each with tiled bathroom, and accommodation for 400 persons. Within the building are stores, barber and hair dresser, billiard, card, ping-pong and badminton rooms, ball room and sound motion picture theatre, tavern, cocktail lounge, main dining room, library and completely equipped ski room. Nearby are garage and staff quarters. The unusual shape of the building gives light, air and scenic view to every room on the three residential floors.

Winter at the Seignior Club provides ski-ing in all its phases on the trails and slopes of the Laurentians around and above the golf course, where daily ski classes are given instruction. In the rolling country to the north, the Valley Farm hills offer diversified ski-ing. Leading in many directions from the club are roads on which



Sleigh driving behind a team of local huskies at the Seigniory

SLEIGHS AND DOG TEAMS



The wide sweep of the Ottawa river provides ice boating

to drive in horse-drawn sleighs or behind a team of dogs past snow-blanketed farms and forest country. There are also: skating on an outdoor rink, tobogganing, riding, ski-joring, snowshoeing and curling on artificial ice. The Seigniory Club is reached in an overnight journey from New York, Boston, Toronto and Detroit. An 11 o'clock sleeper from New York's Grand Central Station, a change next morning at Montreal to a parlor car buffet-equipped train, brings the visitor to Montebello, railway station of the club, before noon. The club is a five minute drive by taxi from the station

Active hockey on the rink



Horse-drawn sleighs carry guests from Montebello station





Page 36

Fast and exciting runs on the slide

SKATING + CURLING

✦ THE toboggan slide's two chutes end far out on the ice of the Ottawa river. The outdoor skating rink is on the dining room terrace overlooking the river and the indoor curling rink has artificial ice

A curling bonspiel on the Club's rink



TOBOGGANING

✦ Somewhat like lawn bowling played on ice, though the rules differ, curling is a fascinating and highly skilful game that has become a popular winter sport at the club

Curling is played throughout the winter

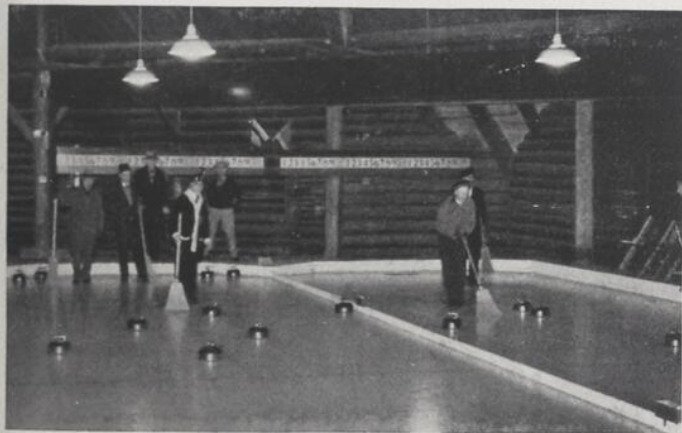


Figure-skating on the Seignior rink



SKI-ING

Negotiating the flags with grace and technique
in a slalom competition at the Seigniory Club

✦ THE Seigniory Club's ski meets are numbered among the best known events in Canada, and at all times impromptu competitions and expeditions meet the desires of those who wish to participate as well as to watch. Slalom, downhill and cross country ski-ing feature several meets held for all classes of skiers. The ski school at the Seigniory Club, with a professional in charge of instruction, has turned many

tyro members and guests into proficient skiers. The ski-ing season usually begins in December and continues until mid-March, when sunny spring ski-ing is at its best. Other winter sports are snowshoeing, riding, ski-joring, sleighing with horses or dogs; indoors, badminton, swimming, billiards



Ski-ing at Valley Farm



At the Seigniory Club's annual women's ski meet



Varieties of spacious slopes surround Valley Farm, north of the Log Chateau

...AT THE

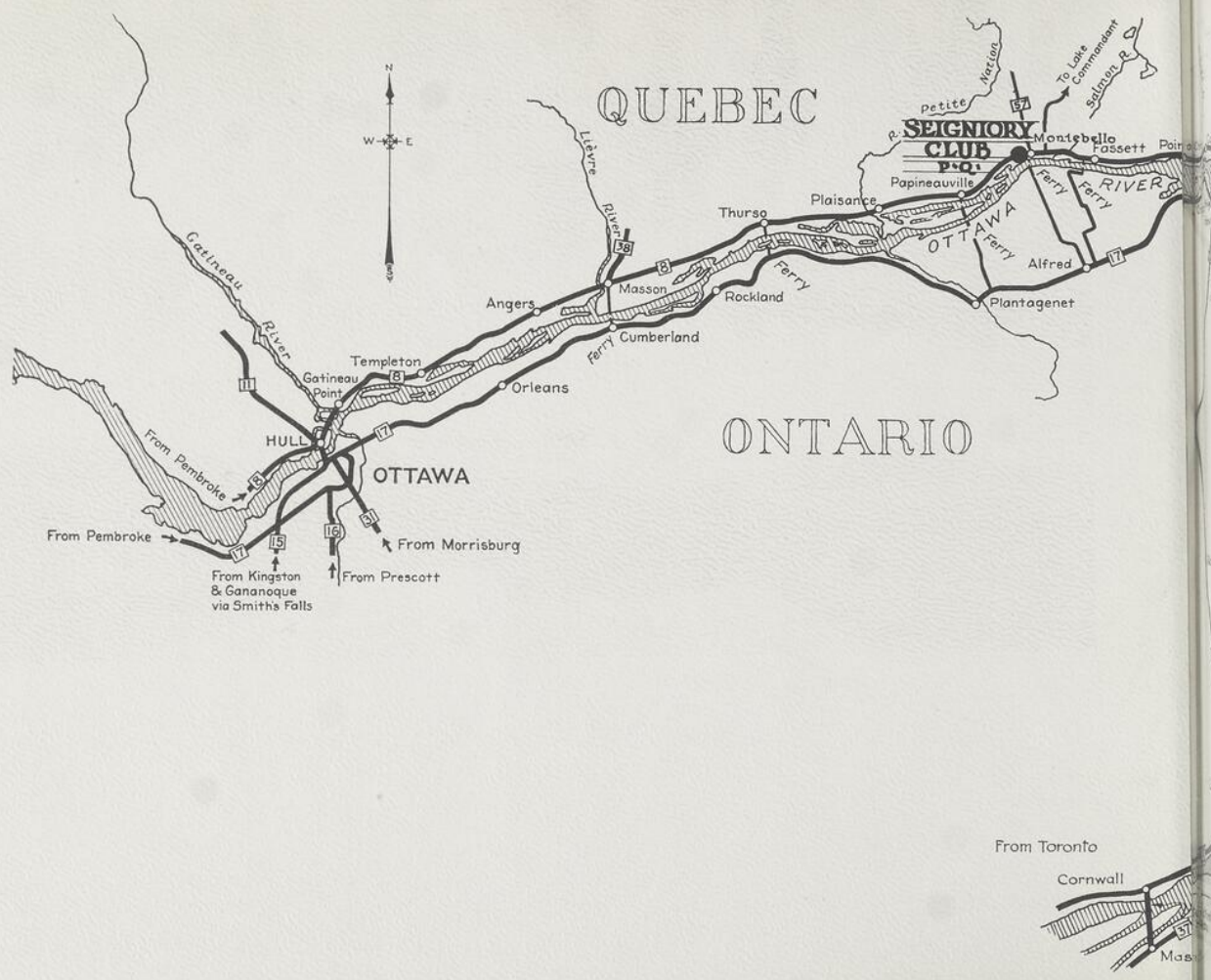


Ski trails covering
all types of country
converge at the main
entrance to the Club

THE END OF THE DAY

✦ IN the Log Chateau, residential building of the Seignior Club, the central chimney, with the four main wings of the building radiating from it, is a focal point in the lounge. After a day's ski-ing, welcoming fires on the hearths make the room a cheerful gathering place. At all seasons it is a restful setting, architectural and decorative details in harmony with the structure





From Toronto

Cornwall

Mas

RATES + LOG CHATEAU + SEIGNIORY CLUB, P.Q.

MEALS—Table d'Hôte: Breakfast, \$1.00; Luncheon, \$1.50; Dinner, \$1.75; Also à la Carte.

CHILDREN—Under 12 years of age and when in room with Parents or Governess, half rates for Rooms and Meals.

SERVANTS—Chauffeurs and Maids in Special Rooms \$5.50 per day, or \$35.00 per week including Meals.

DISCOUNT—Members' discount of 10% is allowed on all of the above rates to Seignior Club Members and their dependents, but not to their guests.

European Plan	ONE PERSON		TWO PERSONS		Rooms, all with bath
	Daily	Weekly	Daily	Weekly	
1938	3.40	20.85	5.95	35.70	3rd floor
	3.85	23.80	6.80	41.65	1 & 2 floors
Jan. 4 to Mar. 14	4.25	26.80	7.65	47.60	1 & 2 floors
	10.20	62.50	14.45	89.25	Suites (sitting room and bedroom)
Mar. 15 to May 12	3.00	18.40	5.25	31.50	3rd floor
	3.40	21.00	6.00	36.75	1 & 2 floors
May 12, Oct. 17 to Dec. 20	3.75	23.65	6.75	42.00	1 & 2 floors
	9.00	55.15	12.75	78.75	Suites (sitting room and bedroom)
May 13 to June 15	3.60	22.00	6.30	37.80	3rd floor
	4.00	25.20	7.20	44.10	1 & 2 floors
June 15, Sept. 12 to Oct. 16	4.50	28.35	8.10	50.40	1 & 2 floors
	10.80	66.15	15.30	94.50	Suites (sitting room and bedroom)
June 16 to Sept. 11	4.00	24.50	7.00	42.00	3rd floor
	4.50	28.00	8.00	49.00	1 & 2 floors
Sept. 11, Dec. 21 to Jan. 3	5.00	31.50	9.00	56.00	1 & 2 floors
	12.00	73.50	17.00	105.00	Suites (sitting room and bedroom)

ROOM SERVICE — An additional charge of 25 cents per cover is made for meals served in rooms. Members' discount does not apply on this charge.

GARAGE—\$1.00 per car per night—\$5.50 per week — \$20.00 per month. (Not subject to discount allowance.)

HOSPITAL TAX — The Quebec Provincial Government Hospital Tax Act obliges us to assess a Tax of 5% on meal charges of 35 cents and upward. — Rates for 3 room suites, also special family rates, on application to the Manager.

FOR INFORMATION, WRITE THE SECRETARY, SEIGNIORY CLUB, P.Q.

THE SEIGNIORY CLUB BOARD OF GOVERNORS

SIR EDWARD BEATTY, G.B.E.

Chairman and President of the Canadian Pacific Railway Company, Montreal, Que.

SIR CHARLES GORDON, G.B.E.

President of the Bank of Montreal, Montreal, Que.

R. S. McLAUGHLIN

President, General Motors of Canada Limited,
Oshawa, Ontario.

W. N. TILLEY, K.C.

Director, Canadian Pacific Railway Company,
Toronto, Ontario.

SIR HERBERT S. HOLT

Chairman of the Board, Royal Bank of Canada,
Montreal, Que.

GEORGE STEPHEN

Vice-President of Traffic, Canadian Pacific Railway Company,
Montreal, Que.

MORRIS W. WILSON

President, Royal Bank of Canada, Montreal, Que.

REPRESENTATIVES

The Seignior Club is administered by Seignior Club Community Association Limited, of which Sir Edward Beatty, G.B.E., is President; George Stephen, Vice-President; F. Bramley, Secretary; A. E. H. Chesley, Treasurer, and C. J. Murphy, Comptroller.

G. P. Hedges is Secretary of the Seignior Club; Cyril Chapman is Manager of the Log Chateau; H. L. Furst is Operating Manager and has charge of cabin construction.

Cards of introduction to the Seignior Club are necessary and may be secured from members or through the Secre-

tary at the Seignior Club, P.Q., on presentation of the usual club references. General inquiries for information should be addressed to the Secretary.

Club offices are maintained at 804 Windsor Street Station, Montreal, Telephone Plateau 2211, Local 2108, and in the Waldorf-Astoria Hotel, New York City, where Miss M. J. Higgins is club representative, Telephone Plaza 3-8931.

Information regarding the Seignior Club is also available from the Canadian Pacific Railway general agents in principal Canadian and United States cities.



BAnQ



C 000 429 805

GAZETTE PRINTING COMPANY
LIMITED
PRINTED IN CANADA