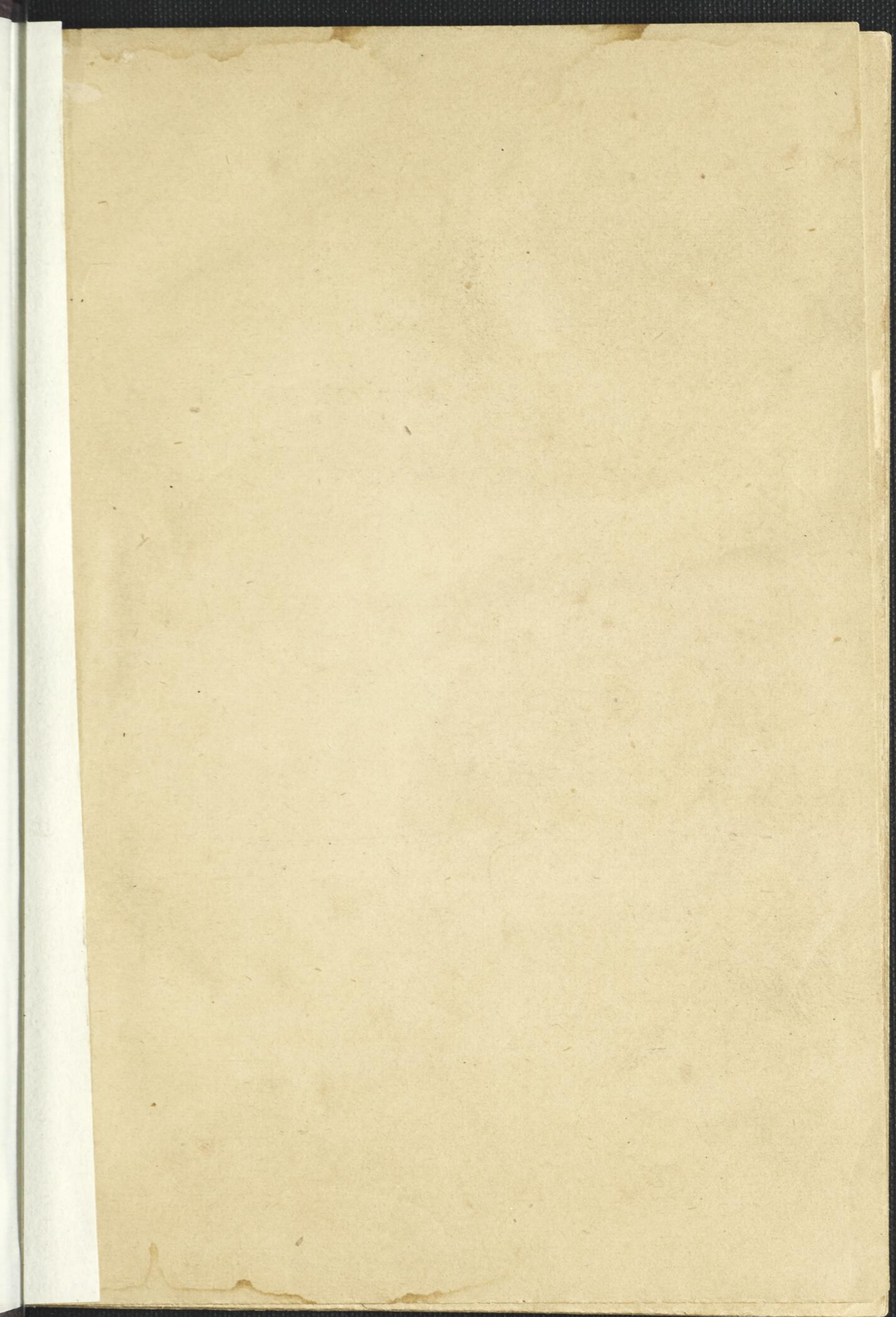
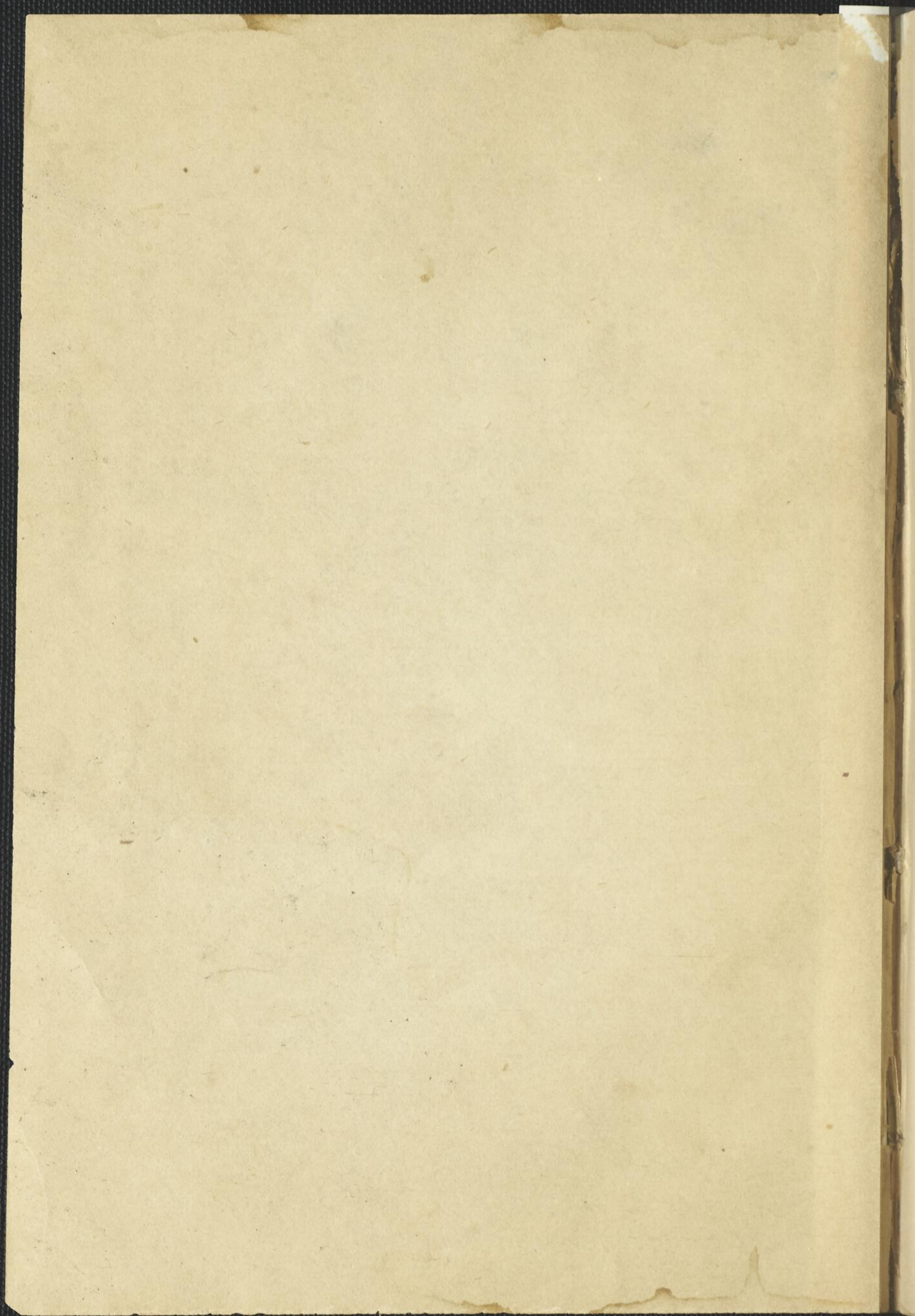
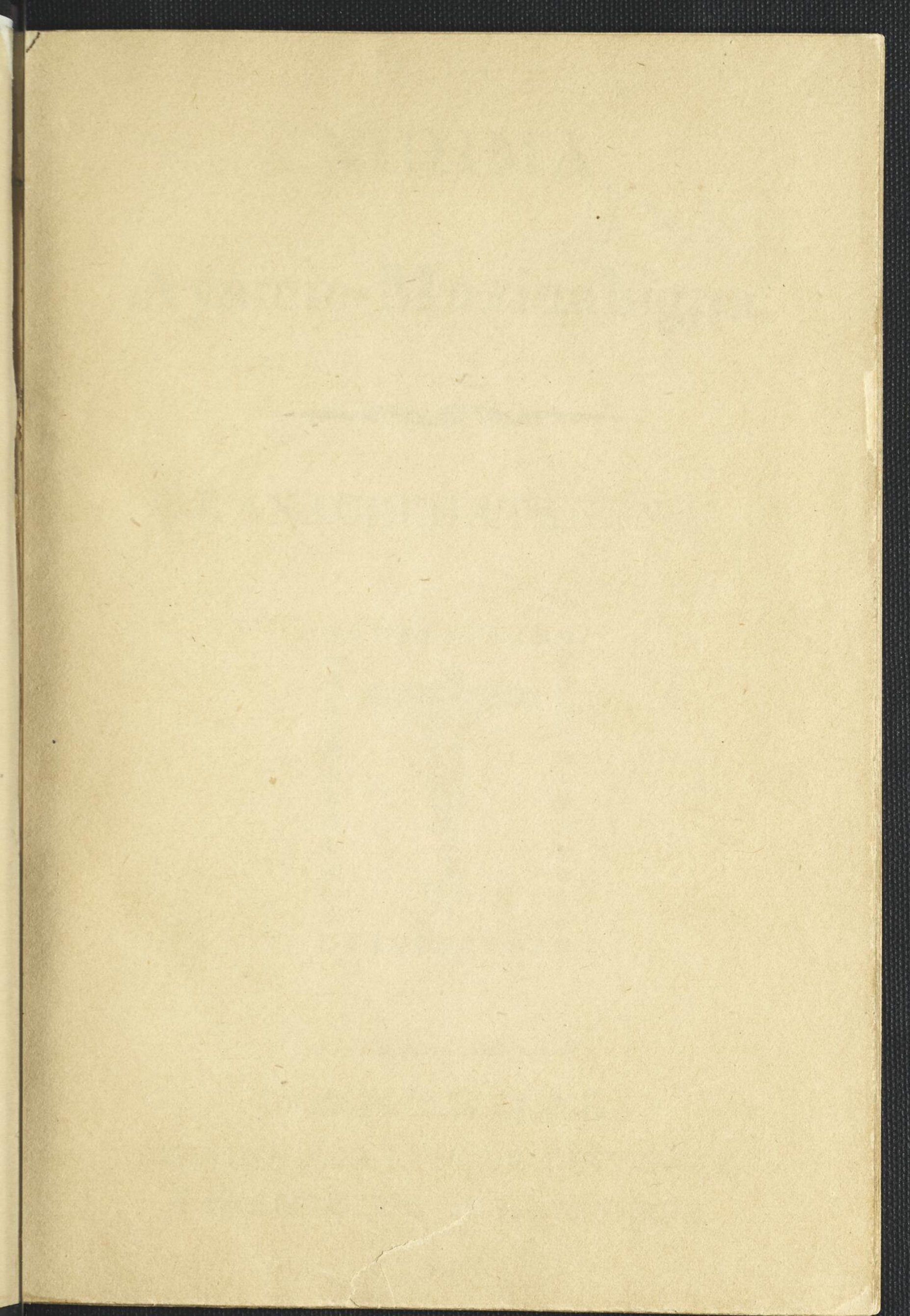


BIBLIOTHEQUE
SAINT-SULPICE MONTREAL









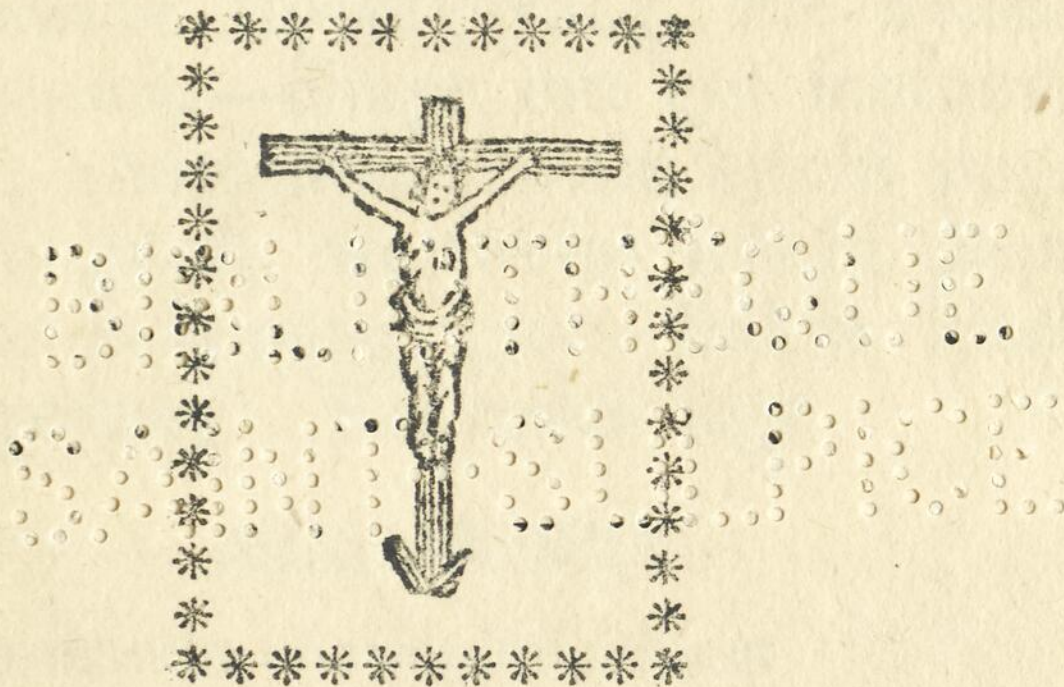
Miller
1-37-63

NIHIMA

Ayamie-Mazinahigna.



KANACHCHATAGENG.



MONTREAL,

IMPRIMÉ PAR LUDGER DUVERNAY,

A L'IMPRIMERIE DE LA MINERVE.

.....
1830.

IBWA MACHI

KIKKINOHAMAGENANIWANG

NABOWEWIN.



KIN keget Jezus ke pizindonang,
enowek ej eka nagussin, enowek chaye
ki gat inottak ke kakikkimihamintj kit-
chi ayamie tipahigeyang, kit ayamie
kakikwewin—chaye nin gat inottama-
gonan; chawenimichinam kitchi paga-
kittawangitch, wewenint kitchi papa-
ganawenindamang, gaye kakik kitchi
tipahigeyang. Katinakis ingi.

NIKAMUWIN.

Mino-manito chawenimichinam

Ni tehinang asso otittan.

Kinahamav ka chingenimihamintch,

Kitchi eka wikat pattatiyan.

Ondas ijan meno-manitowigan,

Wassakunenindahamawinam

Kitchi gweyak anichininiwiyang

Mi dach wakwing kitchi otittamang.

NIHINA AYAMIE-NABOWEWIN.

† *Ejinikazowining Wekossissitch, gaie Weossitch, gaie Wenichichitch-manito.*

NAKKUMATA KIJE-MANITO.

Mizi ka nittawiton Diu ka igon, kin ondjita-napitch katibenimiang, ki nakkuminimin, kwenatch entian ka kis ganaweniang nongum (tibikong, ongajigak:) kakik chaweniminam, kakik ki wi pamittonimin ketako pematissiwangen.

ANWENINDIZOTA.

Ka ningot inenindanken ka kich pattatiang, ondjita ni chingenindananan ni matchi ainttowininan, ka minawatch nin ga wi tissimin: kokki chaweniminam ka kichewatissin, ka nitta chawenimiang; kinahamawinam kitchi eka ningot totawiamintch ka chingenimiamintch.

PAKITINAMATIZOTA KIJE-MANITO.

Mi wentji pakitinamonang ej owiyawiyang gaie ej otchichagussiyang, tibeminiminam, kakik tibenindan ket aintowangen gaie inigik ke gittimagissiwangen: ni kokwatissimin-na tipan ke wij

tibenindizoyang, pejikwan pegusseni-
minang kitchi gwayak osseyang meg-
watch ij pimatissiyang, gaie ki nipuyang
wakwing kitchi taguchimiyang.

TEPWETTAWATA KIJE-MANITO.

Kije-manito ka tibenimin, kakkina
ka kikkinohamagoyang ij-ayamiayang,
kin kit ikitonaban, mi wentji kakkina
tepwettamang.

APPENIMUTA KIJE-MANITO.

Kije-manito ka nitta tepwen, songa
ej-appenimuyan ka iji wanwindamawi-
yang, gaye songa ej appenimuyan ki
gwissis Jezus ot animissiwinan, ondji-
ta-songa ki pihin kitchi witokkawin
gweyak kitchi iji pimatissiyang ondaje-
akking, kakik gaye wakwing tchi mi-
nawassihin.

SAKIHATA KIJE-MANITO.

Kije-manito ka tibenimin, ondjita ki
kitchitwawenindagus, ondjita gaie ki
sakihigus, mi wendji sakihinan awach-
chamenj kakkina kegun ej-ininiwagak,
ni sakihak gaie kakkina anichinabek

kin-ondji, mi epitch sakihitizoyan, mi epitch sakihagwa.

PAGUSSENIMATA KE. Mo. KA
OYOSSIMINTCH.

N'ossinan wakwing epian, kitchitwawenindagwak kit ijinikazowin, i nagus-siwanen keguna kis apiang, ki pamittago indibi wakwing, keguna gaie pamitagon ondaje akking; nongom ongajigak mijichinam ke mitjiyang, mechchagwam gaie kajigakin mijichinam: ka ningut nind-inenindansimin awiya ka nichkihamindjin, ka gaie kin ningut inenindanken ka nichkihinang, kinahamawinam wach-pattatyangin, atchitch ininama-wichinam mayanattak wetissikagoyangin. Katinakis ingi.

ANAMIKKAWATA KA. MANI.

Kit anamikun Mami ka muckineskagoyan ayamie-onichichiwin, ki papaganawenimik mizi ka kijittotch, awachchamenj epitch sakihintwa kitchikwek awachchamenj ki sakihigo: misi gaie kitchitwawenindagussi ki gwissis Jezus ka inintch; napitch ka onichichin, Mami, Diu ka o-kwisissimatch, gaganotta-

mawinam ketako pimatissiwangen, gaie
wich-nipuyang gaganottamawinam.—
Katinakis ingi.

NABOWATA ENENINDAGUSSING KITCHI
TEPWETTAMANG.

Nin depwettawa pejiko Diu wekos-
sissitch, mizi ka nettawitoch, wakwi ka
kijittotch, akki gaie ka kijittotch; nin
depwettawiman gaie o-kwisissan ondjita
pejiko, Jezus-knist ni tepahiganinan,
Wenichichinitjin-Maniton o ki anichi-
nabewihigon, Manin Tessanawitjin mi
wan o pinenottagon; okimawigubon
Pons-Pinat ka inintiban apitch nenekat-
chihintch Jezus, mi dach petakakwa-
hontch tchipayatigong, mi dach nes-
sintch, ningwahakkanintch; anâmakka-
mikong pendike, ka nisso kijigatinik ap-
itchipahitizo; mi dach wakwing ejatch,
mi dach epitch o kitchinikining o-ossan
Diu mizi ka nittawitonitjin, kokki wak-
wing-ondji kata pitch'iji ondaje akking:
mi dach ke minonènimatch kakkina
anichiuaben pematissinitjin gaie nipu-
nitjin, nin depwettawa gaie Wenichi-
chitch-Manito; eniguk wakkamigak

tewek eyamiatjik, ayamie witchihitiwok
 kitchi gwayak ijininiwakiziwatich; kata
 kassikaniwan o matchi ijininiwakiziwini-
 wan, kata y-apitchipak kakkina anichi-
 nabek ej-owiyassiwatich; kakik gaie ta
 pimatissikmi teyeppwettaman.

WINDAMAWATA KE. Mo. KAKIS IJI
 PATTATIYANG.

Ni windamawa Kije-Manito mizi ka
 nittawitotch, kitchitwa Mani kakik ka
 tessianakwewitch, kitchitwa Michen ka
 kitchitwa Anjeniwitch, kitchitwa Jan
 Batist, kitchitwa Pien gaie Paun, Jesus-
 san ka mino-anokkittawagubanenik;
 kakkina Wakwing endadjik, gaie kin
 n'osse ki windamon onzam iki patta-
 tiyan patta-inenindaman, patta-weyan,
 patta-totaman gaie, nin nind indowin,
 nin nind indowin, nin ni-kije-nind in-
 dowin; mi wentji pagussenimagwa kit-
 chitwa Mani kakik tessianakwewitch, kit-
 chitwa Michen ka kitchitwa y-anjeni-
 witch, kitchitwa Jan Batist, kitchitwa
 Pien gaie Paun Jezussan ka mino-anok-
 kittawagubanenik, kakkina Wakwing
 endadjik kitchi gaganottamawiwatich,
 gaie kin n'osse gaganottamawichin.

KIJE-MANITO OT-IKITOWIN.

1°.—Mizi ka kihijittotch Diu ka in-
intch, ki ga pejiko-mannadjihā, enigok-
kutehen ki ka pejiko-sakiha.

2°.—Ka anutch Diu ki ga winassiwa.

3°.—Kijik ki ga mannadjiton, eka ka
anokkinaniwang.

4°.—Ki nikihigok ki ga pamittawak,
kinowens wich-pimatissin ondaje ak-
king.

5°.—Ka awiya ki ga nissassiwa.

6°.—Eka ka witapimatch, ka ki ga
pamenimassiwa.

7°.—Ka ki ga kimotissi.

8°.—Ka gaie ki ga kinawichkissi.

9°.—Ka awiya ki ga missawenimas-
siwa.

10°.—Ka gaie kegun awiya ki ga
missawenindamawassiwa.

PISSINDANDA ENENIMINANG KA KIJE
AYAMIE-GANAWABAMINANG.

1°.—Ki gat ayamia enamesikkani-
wangin Kije-Manito-Kijigak gaie tassin
mennadjittaganiwangin.

2°.—Wewenint ki ga kopesseu kana-
ge ningutin tassin ka ningo-piponagakia.

3°.—Ki ga kommuniu tassin ayapitchipatjin

4°.—Ki ga mannadjitonan mannadjitaganan ka igong kitchi mannadjitong.

5°.—Ki ga kihiguchehim ni-mittaot-tasso-kun ebwa machchi y-apitchipatch, gaie tassin egong kitchi kihiguchchi-mong.

6°.—Ka mitjikken wiyas tchipayaitigo-kijigak, ka gaie Mani-kijigak.

7°.—Kegun nittawigitton, ki gat ayamie-pakitinike endotamowatch eyami-hatjik.

ANJENIWAK PAGUSSENIMATAK.

Nind Anjeniminatuk, kit anonikowa kit okimaminan Jezus kichi papawitji-wiyang; papawitjihichinam, kakik ganaweniminam, kakik mikkominam ka kich kikkinohamagoyang, kakik kinahamawinam changenimihamintch.

KITCHITWA JOSE PAGUSSENIMATA.

Kitchitwa Jose, tipan nihina akki ka ganawenindaman, ki ki nawenj' chawenimik Jezus, songeniminimin tchi gaganottamawiyang, ki sakihik Jezus ka ganawenimatiban akking, ki ga pamittag tchi gaganottamawiyang.

WITCHITWA MICHEN PAGUSSENIMATA.

Kitchitwa Michen, kin napitch ka kitchitwa Anjeniwian, kin ka chagotchibatiban Matchi-Manito, witjihichinam kitchi gaie ninawent chagotchiangitch ka chingenimihamintch.

**PAGUSSENIMATA KA WITCH
IJINIKAZOMANG.**

Kin ka witch-ijinikazominan gaganot-tamawichin kat kikkino-wabaminan ej-ayamiayan akking, kekunagaie wakwing witikeminan ki nipuyan akking.

**PAGUSSENIMATAK KAKKINA WAKWING
ENDANAKITJIK.**

Ka mino-apiyeg wakwing, sayakihi-nag mizi ka kijittotch ka wabameg, gagamottamawinan kitchi tetabiskutch mino-apiyang wakwing.—N'ossinan wakwing.....kit anamikun Mani.

O kich windamagubanin Mani ot Anjeniman mizi ka kijittotch: R. Michach Wenichichitch-Manito o kis mawandonan Mani o miskwi kitchi kijittotch Jezus wiyow. Kit anamikun Mani, &c.

Ni tibenimik mizi ka kijittotch: R. Ekiton, mi ke tian. Kit anamikun Mani, &c.

Ki o wiyassihitizo Kije-Manito o kwisissan: R. Kitchi wich tanakkiminnang. Kit anamikun Mani, &c.

Kitchitwa Mani Diu ka okwisissimatc, gaganottamawinam: R. Wakwing kitchi minawassihiamintch Jezus.

AYAMIATA.

Kije-Manito ka tibenimiyang ki pagusseniminimin kitchi onichichihiyang ij-otchitchagussiyang, kit anonaban kit Anjenim kitchi awi-windang e wij anichinabewihitizotch ki kwissis Jezus ka inintch: ki ki wabama gaie ki kwissis epitch animissipan apitch nessintch tchipayattigong ninawent-ondji, mi wendji pagusseniminang kitchi minoapitchipahiyang. Katinakis ingi.

MEMORARE.

Kwenatch Mania, ka tessianakwe-wiyan, ka nittachaweningen, mikkawin: kawikat nondaganiwansinon kitchi ki anwettawatch ka pagussenimik kitchi

gaganottamowatch. Ka tessanakwe-
 wiyan, ka okimikwa tayessanawidjik,
 nin gaie ej-apenimoyan ki yow, ki pi
 nadjinijimin, ki pi nansikkon, ij-gachke-
 nimdaman iki pattatiyan, ki pi nipak-
 kwitton. Jezus ka okwississimatch,
 kawin webinichikken ej-pagussenimi-
 nan, enabigis chawenindamittawichin,
 gaie pamittawichin. Katinakis iagi.

ANWENINDIZOTA.

Kije-Manito n'osse ondjita nind an-
 wenindis ka ki nichkihinan i pattatiyan;
 ondjita ki kitchitwawenindagus, mi
 wendji chingenindaman kakkina ni
 matchi aintowin awachchamenj kakkina
 kegon ej ininiwagak. Ka win kegon
 nind iji chingenindanzin eji-chingenin-
 daman ni matchi-aintowin Kin ondjia
 ka ondjita onichichin, ka ondjita saki-
 higussin. Kassihamawichin enabigis
 Jezus ot ijinikazowining-ondji; ni kiji-
 nindan kitchi eka minawatch pattatiyan.
 Witokkawenimin, chawenimin, ka mi-
 nawatch nin ga tissi, ket inenimiwane
 mi kakik ke wich tiyan.

J. M. J.

Kitchitwa Mani ninginan, Jose gaganottamawichinam, (Jezus chawenimichinam ; 3.) Kakkina wakwing endanakkियेग, andjissigabawittawik Kije-Manito songa kitchi gaganottamawiyang.

NAKKUMATA KE. Mo.

Mizi ka kijitton, ki tepwetton, ki sakihin, ki wi papamitton, ni-chingenindan ni matchi aintowin, witjihichin kitchi nibuakkayan, ichpeming-wakwing kitchi ejaian nepuyan akking. †.

Menadjittaganiwangin.—Kin mizi ka nittawiton ka nisso-pejikon, ki nakkuminimin ka kis otissabandahiyang aya-miewin Jezus ka mino-apitchipahitizoyanban keguna gaie ninawent ki mino-apitchipahiang witchihichinam kitchi papamittonang gaie kitchi tepwettonang ; inenimichinam kitchi mino nipuyang : kin Jezus ka mino-apitchipahitizoyanban witjihichinam kitchi ekanwanenindamang i songeniminang, kekona meno apitchipayang, gaie kakkina

anichinabek ka kijihatjik ; witjihichi-
nam gaie kitchi kakik sakihinang eni-
gokkuteheyang. Katinakis ingi.

Mayettizowini-Kijigakin.—Kin Jezus
ka kijewatissin, chawenim kakkina nak-
kawe mettizowining epitjik kitchi wi-
batch agwachchipahatwa, tipan tchana-
wemangitjik ki ga chawenimak, iji mino
enindaman i wi kijikkamawangittwa
kakkina inigik ka iji pi mino totaman :
gaie ninawent chawenimichinam, keguna
ki guttamang kitchi niskihinang ; witji-
hichinam kitchi angwamenindamang
inap kitchi kijikkamatizoyang. Kati-
nakis ingi.

Ayanjenikijigakin.—Ni kitchitwa An-
geniminatuk ka nittapapaganawenimi-
yang, kin gaie tipan kichitwa Angenim
tipan ka papagana wenimiyan, kakkina
gaie Anjenituk witjihichinam kitchi
kakik tepwettamang eji kakkiki-miko-
yang: kinahamaw ka chingenimiamintch
matchi Manito. Kakkina gaie wakwing
kitchitwa anichinabetuk ka nigan apiyeg,

ki songeniminimin kitchi gaganottama-
wiyang, keguna ki wij danakkiminang
wakwing pon-pimatissiyang. Katina-
kis ingi.

Jwasep-Kijigakin.—Kin kitchitwa
Jose, Jesus ka ganawenimatiban ikis
abinotchenjiwitch, kin nihina akki ka
ganawenindaman ki sangeniminimin
gaganottamawichinam kitchi gwayak
osseyang ketako pematissiwangen, gaie
wich nipuyang gaganottamawichinam,
kichi eka ponittoyang epitch song' aya-
miayang. Katinakis ingi.

Echpiniganiwangin.—Kin Jesus kit-
chitwa Hostiwining ka kazoyan mem-
wetch ki yow i wich nawapochiyang ki
nakkuminimin ni yawinang ka pindiken
tassin kwamuniwiyangin, mi wentji to-
tawiyang i wi pejikoton ki tehinan;
witjihichinam kitchi kakik tibeninda-
mang kitchi sakihinang, witjihichinam
kitchi gaie ninawent pejiko-sakihitiyang.
Mi ma inenindamanban wentji pejikot-
tawiyang, y-oham ni Manito mitjimimi-
nan. Katinakis ingi.

Tchapayattig-o-Kijigakin.—Kin Jezus ka kotakitoyanban tchipayattigong kichi ondji minawassiyang wakwing, witjihichinam waki kitchi inenindamang kwetakitoyangin. Kin ka nissigonyanban kitchi ondji agwachchimiayang, ondjita keget songa ki nakkumin awachchamenj ka sakihiyang epitch sakihitizon ej-owiyassin, witjihichinam kitchi eka wikat pattatotamang missawatch wi nissigoyang. Katinakis ingi.

Mayani-Kijigakin.—Kitchitwa Mani ka tessanakwe-okwisissin, kin Diu okwisissimatch, gaganottamawinam. Katinakis ingi.



IBWA-MACHI WISSININANIWANG.

Mizi ka kijitton onichichiton nongum ke mitjiyang kitch-mino-èjininiwakissiyang. † Ejinikazowining, &c.

KI ICHKWA WISSININANIWANG.

Mizi ka kijitton ki nakkuminimin ka kis mino-achchamiyang kitchi songitehechkawiyang kitchi eapitch papamittong. † Ejinikazowining, &c.

AYAMIE-KAKWETJINTIWIN.

D. Kit ayamiha-na ?

R. Nind ayamiha, nin gi chawenimik
Kije-Manito iki sikkahandazoyan.

D. Wekunen kekkinawatchihintwa
eyamihatjik ?

R. Tchipayatikokkewin.

D. Tchipayatikonamatizun ?

R. Ejinikazowining Wekossissitch,
gaie Weossitch, gaie Wenichichitch-
Manito.

D. Awenin ka kijihinang ?

R. Kije-Manito ki kis kijihigonan.

D. Anin inenindamogubanen Ke.
Mo. apitch kajihinang ?

R. Jnenindamoguban nin ga kikke-
nimigok, nin ga sakihigok, nin ga pa-
mittagok, mi ket ingi Wakwing kitchi
minawassiwatich.

D. Anin ej-inagussitch Kije-Manito ?

R. Ka win kikkenindagusissi epitch
onichichitch Ke. Mo, kakkina o ki
kihijitton, Wakwi gaie akki, kakkina
kegun win pejiko o tibenindan.

D. Owiyawina Kije-Manito ?

R. Ka win o wiyawissi Ke. Mo.,
napitch Manitowi.

D. Andi ej-apitch Ke. Mo.?

R. Mizi mizi te Ke. Mo., wakwing
gaye akking, ka win ningutiji ichkwa-
y-apissi.

D. Kakkina-na o wabandan Kije-
Manito?

R. Kakkina o wabandan Ke. Mo.,
enowek kegun kayataganiwangin ki
mitonenindjiganinang.

D. Kakik na teban Kije-Manito?

R. Kakik teban Ke. Mo., Kakik gaie
kata te.

D. Manek-na Kije-Manituk?

R. Ka win manessik, pejiko eta Ke.
Manito.

D. Anin endachchiwatch Kije-Mani-
towiwining?

R. Nissiwok Kije-Manitowiwining,
Wekossissitch, gaie Weossitch, gaie
Wenichichitch-Manito.

D. Kije-Manitowi-a Wekossissitch?

R. Kije-Manitowi Wekossissitch.

D. Kije-Manitowi-na Weossitch?

R. Kije-Manitowi Weossitch.

D. Kije-Manitowi-na Wenichichitch-Manito?

R. Kije-Mautowi Wenichichitch-Manito.

D. Nissiwok-na dach Kije-Manitok?

R. Ka win nississik, pejiko eta Kije-Manito, ondjita nisso-pejiko.

D. Ka-na i nissiwatch pejik awachamenj kitchitwawenindagussissi?

R. Ka win pejik awachamenj kitchitwawenindagussissi, napitch tabiskutch kitchitwawenindagussik.

D. Wekunen-ondji napitch tabiskutch kitchitwawenindagussiwatch?

R. Pejikwauini o Kije-Manitowiwi-niwa, mi wentji napitch tabiskutch kitchitwawenindagussiwatch.

D. J. nissiwatch awenin ka anichinabewihitizotch?

R. Weossitch ki anichinabewihitizo.

D. Andibi ej-anichinabewihitizogubanen Jezus?

R. O wiyawing kitchitwa ikwe Mani, kakik enowek tessanakwewiban.

D. Anin inenindamogubanen apitch

enichinabewihitizotch Kije-Manito o kwisissan.

R. Jnenindomoguban nin gat agwach-chimak anichinabek ichkuteng, wak-wing dach kitchi minawassiwatich.

D. Anin ke ki tiyanguban anichinabewihitizosigubanen Jezus?

R. Kakkina ki ta ki mettizonanaban.

D. Awenin ka nikiatch Jesussan?

R. Kitchitwa ikwe Mani sa o ki nikihan.

D. O nidjanissi-na kitchitwa Mani, kikangwi-na gaie pekich.

R. Pekich o nidjanissi kitchitwa Mani, pekich gaie kikangwi, Wenichichinitjin-Maniton o ki otissigon; Kije-Manito o machkawiziwin o kis akawatech-kagon, mi dach ka ondji onidjanissitch kitchitwa Mani, enowek ej-eka kikkenimassik ininiwan, ket-na kegun o pwanawitton Kije-Manito.

D. Anin ejinikazotch Kije-Manito o kwisissan ka anichinabewihitizotch.

R. Jezus ijinikazo.

D. Anin apitch ka nikitch Jezus.

R. Neu kitchi-mitasso-mittana tasso piponetoguban ekko akkiwanogubanen apitch nakigubanen Jezus.

D. Anin endasso piponagak nongum ka akko nikitch Jezus?

R. Achaye ningotin kitchi-mitasso-mittana tasso piponagat achitch nichwassin mitasso mittana achitch nissomittana-tasso—pipon ka akko nikitch Jezus otenawensing Bethlehem ka ijnikateg.

D. Anin ejinikatek ihim tibik apitch nakigubanen Jezus?

R. Mi ihim tibik *Noen* ka ijinikatek.

D. Anin tasso pipon ka pimatissigubanen Jezus ondaje akking?

R. Nisso mittana tasso pipon achitch nisso pipon pimatissiguban Jezus ondaje akking.

D. Anin endogubanen Jezus megwatch pematissitch ondaje akking?

R. Ki kis kikkinohamagonaban ke totamang kitchi gwayak ijininiwakissiyang, gaie ki kis kijikkamawanissigonan kitchi onichichiwatich ki tchitchagussinamik.

D. Anin entogubanen Jezus kitchi kijikkamawanissinang.

R. Iki nanekatchihintch, iki gaie nis-sintch.

D. Ki nipuwan-na Kije-Manito o kwisissan Jezus ka inintch.

R. Ki nipu tchipayatigong.

D. Awenin ot indowin wentji ki niputch Jezus?

R. Kakkina anichinabek ot indowiniwa wentji ki niputch Jezus; inenindamoguban nin gat agwachchimak anichinabek ichkuteng, Wakwing dach kitchi minawassiwatich.

D. Andapitch nipoguban Jezus?

R. Sakwaninik.

D. Anin ejinikateh ihim kijikapitch nipogubanen Jezus?

R. Kitchitwa tchipayatiko-kijik ijnikate.

D. Andapitch apitchipahitizoguban Jezus?

R. Ka nisso kijigatinik kach niputch.

D. Andapitch Wakwing ejaguban.

R. Ni-mittana ka tasso kijigatinik kach apitchipahitizotch.

D. Anin apitch kach anonatch Weni-
chichinitjin-Maniton kitchi songitehech-
kawanitch ka makkatewikonayenitjin?

R. I kijigak *Pentekot* ka ijinikatch,
nano mittana ka tasso kijigatinik kach
apitchipahitizotch.

D. Kije-Manitowi-na Jezus?

R. Kige-Manitowi Jezus.

D. Pekich-na anichinabewi gaie Je-
zus?

R. Pekich anichinabewi Jezus.

D. Andi ej-apitch nongum Jezus Ij-
Kije-Manitowitch?

R. Jezus Ij-Kige-Manitowitch mizi
mizi te, Wakwing gaie akking, ka-win
ningotiji ichkwa-y-apissi.

D. Andi ej-apitch nongum Jezus ij-
anichinabewitch?

R. Jezus ij-anichinabewitch Wak-
wing te, gaie kitchitwa okanistiwining.

D. O nagatan-na Jezus Wakwi kitchi
apitch kitchitwa Okanistiwining?

R. Ka win o nagatansin, pekich Wak-
wing api, pekich gaie api Kitchitwa
Okanistiwining.

D. Minawatch-na-kata pitch-iji Jezus ondaje akking?

R. Minawatch kata pitch-iji Jezus pon-akkiwaninik, kitchi minonenimatch kakkina anichinaben.

D. Ki ga nipumin-na?

R. Ondjita keget nipumin apitch ket inenindamokwen Ke. Mo.

D. Anin ket ingi ki yawinan ki nipong?

R. Akking ta ningwawanginikaten.

D. Kakik-na kata y-atten ki yawinan anam-anwang ej-ningwawanginikatek?

R. ~~D.~~ Ka win kakik kata y-atteson, kokki ta y-apitchipamagaton pon-akkiwang kitchi minoneniminang Jezus.

D. Nipu-na gaie ki tchitchagussinian?

R. Ka win nitta nipussi.

D. Anin ke titch ki tchitchagussinian ki nipong?

R. O ka nansikkawan kije-maniton kitchi minonenimigotch.

D. Andibi ket ijatch ki tchitchagussinian ki minonenimigotch Kije-Maniton?

R. Songa nebuakkatjik Wakwing ta ijik, kije-pattattowining endappinetjik

anam-akkamikong kakik kata mokwak-kizok, pattatowinensing endappinetjik kata nakkawe kassihakizok.

D. Anin ejinagwak Wakwing?

R. Wakwing mi indibi netta eji-minawanigwak, mi indibi kakik eji minawas-sinaniwang ej-wabamintch Kije-Manito.

D. Awenin Wakwing ket ijatch?

R. Kawikat ki pattatissi enenindagus-sitjik Wakwing ta ijik, gaie payattatitjik songa-anwenindizowatch ibwa machi nipuwatch.

D. Anin ejinagwak anam-akkamikong?

R. Anam-akkamikong mi indibi natch animissinaniwan, mi indibi payattatitjik ta mokkwakkizok, matchi-Maniton o ka wimbinemawan.

D. Awenin anam-akkamikong ket ijatch?

R. Kije-pattatowining endappinetjik anam-akkamikong ta ijik, kakik ke taje animissiwatich.

D. Anin ejinagwak ej-nakkawe-met-tizonaniwang?

R. Mi indibi ej-nakkawe kassihakki-

zowatch ayanwenindizotjik gaie patta-
towinensing endappinetjik, kitchi teb
kijikkawawatch Kije-Maniton ibwa-ma-
chi Wakwing ijawatch.

D. Kachkihak-na anam-akkamikong
mayettizotjik kitchi agwachchimintwa?

R. Ka nitta kachkiassiwak, kakik
kata mokkwakkizok.

D. Nitta kachkihak-na kitchi agwach-
chimintwa ayanwenindizotjik nekkawe-
mettizotjik?

R. Nitta kachkihak.

D. Anin ejininiwagak pattatowin?

R. Pattatowin missa ej-anwettawintch
Kije-Manito.

D. Anin endassweyagak pattatowin?

R. Nijwayagaton pattatowin: patta-
towin ka kegichkamang apitch wechki
anichinabewiyangun, kotak itach kina-
went tibinawe ka wij pattatiyang.

D. Anin ejininiwagak pattatowin ka
kegichkamang apitch wechki anichina-
bewiyangun?

R. Nittam anichinabe Adam inawin-
tiban ot indowin, ka o pamittawassawa-

banen Kije-Maniton mi wentji pattatonang.

D. Anin ejininiwagak pattatowin ka wij-pattatiyang?

R. Mi ihi kinawent tibinawe mejihitizoyang ekko piziskenindamang.

D. Anin endassweyagak pattatowin kinawent tibinawe ka wij pattatiyang?

R. Nijwayagaton pattatowin kinawent tibinawe ka wij pattatiyang: kije-pattatowin gaie pattatowinens.

D. Anin ejininiwagak kije-pattatowin?

R. Kije-pattatowin missa ondjita i kitchi anwettawintch Kije-Ma.

D. Anin endotagemagak kije pattatowin?

R. Kije pattatowin ki makkamigonanan ayamie-onichichiwin, gaie kakikke ichkuteng kit appakinigonanan.

D. Anin ejininiwagak pattatowinens?

R. Pattatowinens missanond ej-anwettawintch Kije-Manito.

D. Anin dach endotagemagak pattatowinens?

R. Pattatowinens ka win anawi kit appitchi makkamigossinanan ayamie-

onichichiwin ij-onichichiwatsh ki tchitchagussinanik, enowek memandjich o wannadjiton.

D. Andibi ket ijawatch kije-pattatowining endappinetjik.

R. Kye-pattatowining endappinetjik anâm-akkamikong ta ijik, kakik ketdaje animissiwatsh?

D. Andibi ket ijawatch pattatowinensing endappinedjik.

R. Pattatowinensing endappinedjik nakkawe-mettizowiniug ta ijik, Kitchi teb kijikkawawatsh Kije-Maniton ibwamachi Wakwing ijawatch.

D. Anin endassing kije-pattatowin?

R. Nijwassinon kije-pattatowin, Sassekawin, sasakisiwin manatissiwin, misawenintiwin, nipatissiwin, nichkatissiwin, kittimiwin.

D. Anin ejininiwagak ayamie-manitokazowin *Sacrement* ka ijinikatek?

R. Ayamie-kikkinawatjihitiwin ka nagwak, ka kijittogubanen Jezus kitchi onichichiwatsh ki tchitchagussinanik.

D. Anin endassing ayamie-manitokazowinan *Sacrement* ka ijinikategin?

R. Nijwassinon ayamie-manito-kazowinan Sacrement ka ijinikategin; sikkahandatiwin, songitehechkagewin, kopessewin, okanistiwin, ayamie-nominitiwin, ka makkatewikunayewin, ayamie-wiwindiwin.

D. Ani ejininiwagak sikkahandatiwin?

R. Sikkahandatiwin ki kassihamagonan pattatowin ka wiyakichkagoyang i nikiyang; ki wangomikonan Ije-Manito, tabiskutch wenidjanissingin kit apittenimigonan.

D. Awiya sikkahandazotjin, mi nagutch netta kayassihamawintch pattatowin ka wiyakichkagotch ej-ochki anichinabewitch.

R. Ka win eta kassihikatessinini; tabiskutch-sa kakkina kassihikateniwan minigik ka kis pattatagubanen ibwa machi sikkahandazotch.

D. Nijin-na awiya ta sikkahandazo?

R. Ningotin sa gutch eta ta sikkahandazo awiya.

D. Awenin ka nitta ayamie-sikkahandagetch?

R. Mekkatewikunayek-sa eta wina-

wa nitta sikkahandagek ; enowek itacn. tassik ka makkatewikunayek kakkina anichinabek o ta sikkahandawawan songa-y-akussinitjin.

D. Anin endotang ka ayamie-sikkahandagetçh ?

R. Nipi o siginamowan o skatiko-ning ka y-akussinitjin, pekich ikito : ki sikkahandon ot ijinikazowining wekos-sissitch, gaie Weossitch, gaie Wenichichitch Manito.

D. Anin ejininiwagak songitehechkagewin.

R. Songitehechkagewin ki minigonan-wenichichinitjin-maniton kitcki songitehechkonang.

D. Wekunen wentji memandjich passanoëonang ka ayamie ganawabaminang apitch ayamie-nominimang ?

R. Kitchi eka nichkenimangwa nechkeniminanguk, kitchi gaie pekatch kottakenindamang ningut entiyangun.

D. Wekunen-wentji tchipayatikkonang ?

R. Kitchi eka agatchittamang ayamiewin.

D. Anin ejininiwagak kopessewin sacrament ka ijinikatek.

R. Kopessewin ki kassihamagonan ki matchi ahintowininan eko sikkahandagong.

D. Kakik-na kassihikateniwan kwapessewitjik o matchi ahintowiniwan?

R. Ka win kakik kassihikatessininiwan kwapessewitjik, mi eta songa ayanwenindizotjik, gaie dach meno-kopessewitjik.

D. Anin ke totang awiyak kitchi mino-kopessewitch?

R. Nan-wayak kata totam : 1°. Nitam, o ka pandawenindanan kakkina o matchi ahintowinan ; 2°. Nij-wayak, songa o ka webinanan, o kat ichkwayenindanan ; 3°. Niss-wayak, ta inenindam ka minawatch nin ga tissi ; 4°. Ne-wayak, kakkina inigik ka pattatogubanen o ka windamawan ka makkatewikanayenitjin ; 5°. Nan-wayak, o ka kakizoman Kije-Maniton gaie anichinaben ka nichkihatch.

D. Anin ejininiwagak ayamie-nomi-

nitiwin ka minintwa songa ka y-akus-sitjik?

R. Ayamie nominitiwin ka minintwa songa ka y akussitjik ot ayamie-songitehechkagonawa, gaie o notjimohigonawa naningotinon.

D. Anin ejininiwagak ka makkate-wikunayewin sacrament ka ijinikatek?

R. Ka makkatewikunayewin mi ejiminintwa ka makkatewikunayewitjik ayamie-onichichiwin kitchi anamensik-kewatch, kitchi gwayak kikkinohamagewatch, gaie kakkina kitchi wunweninttotamowatch mekkatewikunayek enenindagussiwatch kitchi towatch.

D. Anin ejininiwagak ayamie-wiwin-tiwin sacrament ka ijinikateg?

R. Ayamie-wiwintiwini mi ejiminintwa ayamie-nipawitjik ayamie onichichiwin kitchi sakihitiwatch, kitchi minonittawikihawatch o nidjanissiwani ayamiewin-ondji, gaie kitchi mino ejiwebissiwatch eji-mino ijiwebissiwatch meno ayamie-wiki:entitjik.

D. Anin ej-ininiwagak kitchitwa okanistiwin sacrament ka ijinikatek?

R. Mi ontjita ej-apitch kitchitwa okanistiwining Jezus-Knistus ij-amichinabewitch gaie Ij Kije-Manitowitch, wiyov, o miskwi, o tchitchagussan, o Kije-Manitowiwini, kakkina nominikazohitizo pakwejiganens gaie chominabo ot ijini-nagussiwining.

D. Awenin ka kijittotch kitchitwa okanistiwin sacrament ka ijinikatek?

R. Jezus-knist o ki kijitton.

D. Anin apitch kajittogubanen?

R. Ningot o kijik ibwa machi nipatch.

D. Anin inenindangiban Jezus apitch wach kijittotch kitchitwa okanistiwin?

R. Inenindamoguban: keyabatch ninga witikemak eyamiatjik, ninga songitehechkawak. Kitchi nibuakkawatch, ninga minawassihak mino komminiwiwatch.

D. Wekunen eyotch Jezus apitch wach kijittotch kitchitwa okanistiwin?

R. O kis ottapinan pakwejiganens, o kis ayamittawan, o kis matinamawan

kakkina ka makkatewikunayenitjin ka papa witjiwagubanen ej-ikitotch, ottapinik, amuk gaie kakkina, mi ma ohum ni yow : mi tabiskutch o kis ottapinan minagan, chominabo ateniguban minaganing, o kis ayamitton, o kis mina gaie ka makkatewikunayenitjin ej-ikitotch ; ottapinamuk minikkwattamuk gaie kakkina mi ma ohum ni miskwi : mi dach ij-anonatch ka makkatewikunayenitjin kitchi kachkitonitch gaie winawa kitchitwa okanistiwin.

D. Awenan enonatjin Jezus kitchi pakitinamagutch wiyow ?

R. Ka makkatewikunayenitjin o kis anonan.

D. Anin apitch ihim endotamawatch mekkatewikunayek ?

R. Apitch enamensikkewatjin.

D. Anin endotang ka makkatewikunayetch ej-anamensikketch ?

R. Mi apitch mechkut-ossenit Jezus wiyow pakwejiganensing gaie o miskwi chominabong ; mi dach ij pakkitinamawatch Kije-Maniton Jezus wiyow anichinaben ondji.

D. Anin engi keabatch enamesikka-niwangin ?

R. Mi apitch gaie win Jezus tibinawe o pakitinamatizun wiyowo ossan anichinabek ondji.

D. Pattatowa-na awiyak eyamihassikun enamesikkaniwangin mennadjittaganiwangin ?

R. Pattatowa ochcha ej-anawi kachkittotch kitchi awi ayamihatch ; mi ma iji kakanzominang ka ayamie-ganawabaminang : ej-ikitotch, ki gat ayamia enamesikkaniwangin Kije-Manito-Kijigak, gaie tassin mennadjittaganiwangin.

D. Pattatowa-na gaie wikat pandiketch enamesikkaniwangin mennadjittaganiwangin ?

R. Pattatowa gaie win eka minawatch witjiwetch ej-anamesikkaniwaninik.

D. Wekunen ka mannadjittong kitchitwa ostiwining ?

R. Jezus wiyow atteni.

D. Tagunini-na o miskwim Jezus ikazotch pakwejiganens ot ijinagussiwining ?

R. Tagunini gaie o miskwi.

D. Tagunini na Jezus wiyow ayamie-minaganing ka miskwagamik ot ijina-gussiwining?

R. Tagunini gaie kiki-memiji-kak-kina.

D. I nenawinatch ka makkatewikunayetch kitchitwa ostiwin, o nenawinan-na gaie Jezus wiyow?

R. Ka win o nenawinassiwan, mi eta o pikkwenan pakwejiganens ot ijinagussiwin,

D. Api-na Jezus kitchitwa ostiwining Ij-Kije-Manitowitch, pekich gaie ij anichinabewitch?

R. Api Jezus kitchitwa ostiwining Ij Kije-Manitowitch pekich gaie ij-anichinabewitch.

D. Wekunen-wendji tanenimang Jezus kitchitwa ostiwining Ij-Kije-Manitowitch gaie ij-anichinabewitch?

R. Win ondjita ikitoguban Jezus, ka dach nitta kinawichkissi, ka gaie kegun o pwanawitossin.

D. Napitch-na ki mino-totagonan Jezus epinitjin kitchitwa ostiwining?

R. Wanina kis sakihigunan, o pina-

han ki tehinang ayamie-onichichiwin, ki witjihigonan kitchi mino-ijininiwakissiyang, gaie ki ga mino y-apitchipahigonan-pon-akkiwang.

D. Anin endowatch ka kommuniwitjik?

R. Jezussan o pindikagohan o teiwang, Ij-Kige-Manitowinitch gaie ij anichinabewinitch.

D. Wekunen wentji minawassiwatch gwayak ka iji kommuniwitjik.

R. Newin-inigik ot igi-minawassihan: o mintjimeniman wiyawing. Ka mino-kommuniwinitjin, anyantch o chaweniman kitchi songitehechkawatch, inap kitchi machkawizinitch kekochich wij wayejimigonitch; ot iji-kikkahamawan kitchi apitchipanitch ej-o wiyawinitch, wakwing kitchi ijanitch kiki gaie o tchitchagussan.

D. Awiyak wach mino-kommuniwinitjin, anin dach ke totang o tchitchaguchin-inakkak?

R. Awiyak wach mino-kommuniwinitjin, kata mitonenindizo pinama, kitchi eka kegon mayanattatinik tagussinik o

téhing, ta songa anwenindizo, ka win memendjich mayanattatinik o ka kichkanzin, kata mino kopessewi, songa o ka tepwettawan Jezussan epinitjin kitchitwa ostiwining; o ka pejikweniman kitchi sakihatch, ka y-awiyán o ka chin-genimassiwán.

D. Awiyak wach mino-kommuniwitin, anin dach ke totang wiyawing inakkak?

R. Ka win appine-gutch ej-abita-tibikatinik-akwi o ka midjissin, ka gaie ta minikwessi: ka win gutch anutch kata pimi inapissi wich ayamihatch: ka win onichichinsinon onzam awiyak sessekakunayetjin; ka gaie onichichinsinon awiyak kitchi-kotaki-kunayetch.

D. Anin minawatch ket inenindang awiyak pechutch chaye kitchi kommuniwitch?

R. Ta inenindam: keget api Jezus kitchitwa ostiwining; ta makatenindam epitch kichewatissinitch, epitch kitchitwawenindagussinitch, enowek nin ga wittapimak anichinabek enenindang.— Ta yangwam-enindizo, ta mitonenindam

kakkina inigik ka pattatogubanen ; minawatch ayagwitta o ka wawejitton kitchi anwenindizotch, mi dach anyantch awachchamenj kitchi songenindang.— Enigokkutehetch o ka sakihan Jezussan kitchi tepahiganatch. Mi ket inenindang awiyak chaye pechutch kitchi kommuniwitch.

D. Nabowen eji-nabowenaniwang tchi-bwa kommuninaniwang ?

1°. TEPWETTAWATA JEZUS.—Jezus enowek eka ka wabaminan enowek songa kit indanenimin kitchitwa ostiwining, mi wentji mannadjihinan i pejikosakihinan.

2°. TABASSENINDIZOTA.—Jezus ka kije-manitowiyen, kakkina ka tibenindaman, kwatissiyen wach pendikawiyen ni tehing, pingwing epittenindagussiyen.

3°. SAKIHATA.—Wanina ki sakihin Jezus, kwenatch n'osse, ki pejiko enimin, kakkina gaie anichinabek ni sakihak, keguna kis tepahigewatch ki yow, ka y-awiya ni chingenimassiwa.

4°. APENIMUTA.—Kwatissiyang wach kommuniwiyen, enowek mekkawenin—

damonan ki kichewatissiwini kit inenimin, Jezus o ka onichichiton nin de kitchi mino-kommuniwiyan.

5°. ANWENINDIZOTA.—Jezus, songa nind anwenindis ka nichkihinan; miwentji anwenindizoyan, napitch i sakhigussin; wendji gachkenindaman mekkawenindamonan ki kichewatissiwini, ka minawatch kiga nichkihissinon, nindawatch nont nipuyan ibwa-machi minawatch nichkihinan.

6°. MISSAWENINDANDA.—Ondas kwenatch Jezus, ondas pi-tibenindan nin de; ondjita ni missawenindan kitchi y apittaman nin de, ondjita keget nin de ki nandawenimigon eji nandobitch michchewe nebakwedjin.

D. Anin dach minawatch ke totang awiyak ki passikwitch kitchi awi kommuniwitch?

R. Kata awi wewenint mino-nipakwitichik kommunattik; pipakiweyanens o ka tessiginan: kitchi chakkamonigotch mekkatewikunayenitjin kitchitwa ostiwinan, memandjich kata tetakikkweni, mitchi kata inapi, pangi kata tawani,

pangi gaie kata sakitenaniweni: mi dach ki chakkamonintch kitchitwa ostiwin, kata sipottoneni, kata nawakikkweni, kata wikwatchito pakikatch kitchi kunnatch wibatch ibwa-machininganematch o toning. Kichpin agukkinitch kitchitwa ostiwin o nagaskong, ta wikwatchito pekatch kitchi pakkwattanematch, o tenan o kat ayon kawin-wikat o ka wi ayossinan o nindjin.

D. Anin minawatch ke totang awiyak chaye ki ichkwa kommuniwitch?

R. Ki ichkwa kommuniwitch, apitch ke passikwinaniwang, mamawi gaie win ta passikwi kitchi awi nipakwitch kokki, mi dach kitchi wewenint nakkumatch Jezussan ka pendikagotjin o teing: mino-agach pinama kata ayamie, memandjich-kinowenj ka kata sikussi.

D. Nabowen eji-nabowenaniwang ki ichkwa kommuniwinaniwang?

1°. MANNADJIHATA JEZUS.—Jezus ka tibenimin, ka kazoyan kitchitwa ostiwining nin-ondji, Ij Kije-Manitowiyan gaie ej-anichinabewiyan, enigokkutehe-

yan ki mannadjihin, kin ma ki ki kijitaw kakkina minigik eji-taniyan, mi wentji mannadjihinan.

2°. NAKKUMATA.—Jezus kwenatch p'osse ki nakkumin ka kis pindikawiyani ni tehing, ki sakihin enigokkuteheyan: kawikat nin ga wanenindansin ej-minototawin.

3°. PAKITINAMAWATA.—Jezus ka tibendaman ni pimatissiwin, ki pakitinamon ni yow gaie ni tchitchagus: tibendan ke towanen, gaie inigik ke kotakitowanen, kitchi wakwing minawassiyani.

4°. SAKIHATA.—Jezus tebenimin ondjita ka sakihigussin, ondjita ki sakihin enigokkuteheyan; enabigis sakahan nin de echkam echkam kitchi sakihinan.

5°. PAGUSSENUMATA.—Jezus ki pagussenimin mino-ijininiwakissiwin gaie ayamie-onichichiwin, widjihichin kitchi eka-wikat wanenindaman ej-ayamian, gaie kitchi pejiko-tepahiganinan.

6°. PAKITTENIMATA MATCHI-MANITO. Ondjita ni pakittenima Matchi-Manitowanina ni chingenindan ni matchi ahin-

towin, kawikat nin ga tepahigesinak metchi manitowitjik ; kin dach ij pejikon Kije-Manito n'osse, ni tepahigen ki yow, chawenimichin.

D. Pattatowa-na awiyak kwammu-nissigan ?

R. Pattatowa oehcha awiya teb piziskenindang eka kommuniwitch kanage ningotin tassin ka ningo-piponagak-kin (koni i kittimitch-ondji kitchi kikinohamawintch, koni gaie kawewenint wi kopessewissituk, gaie ka o wi webinansinatuk o matchi ijiwebissiwins :) ot anwettawan-ma ka maya-ayamie-ganawabinitjin ka ininang: ki ga kommunyu tassin ayapitchipatjin.

D. Ondjita-na pattatowak ka matchi kommuniwitjik ?

R. Ondjita pattatowak ka matchi kommuniwitjik, o wiyagittonawa Jezus-Wiyow, songa o nichkihawan Kije-Maniton, eka anwenindizossigwa, ta y-animissiwak eapitch eapitch kakikke ichkuteng anam-akkamikong.

SONGITEHECHKAGEWIN.

D. Anin ejininiwagak songitehechkagewin sacrament ka ijinikatek?

R. Songitehechkagewin ki minigonan Wenichichitch-Manito, gaie ki muchkineskagonan et ayamie-onichichiwin kitchi songitehechkonang.

D. Kije-Manitowina Wenichichitch-Manito?

R. Kije-Manitowi Wenichichitch-Manito.

D. Ka-na ki pindagussinanan Wenichichitch-Manito apitch ka sikkahan-dagong?

R. Keget anawi ki pindikagonan Wenichichitch-Manito apitch ka sikkahan-dagong; anich itach apitch eyamie-nominigong, awachamens ondjita ki muchkineskagonanan ayamie onichichiwin, gaie awachamens ki songitehechkagunan Wenichichitch-Manito kitchi songa ayangwamenindamang enenindagussing ej-ayamiyang.

D. Anin eji chaweniminang Wenichichitch-Manito ej-ayamie-nominigong?

R. 1. Wenichichitch-Manito ki ka-kittawenindamihigunan, ki kikkinohamagunan epitch onichichitch Kije-Manito ka nisso-pejikotch, gaie epitch minawanikwenindagwak wakwing.—2. Ki witokkawenimigonan enigukkuteheng kitchi sakihang Kije-Manito.—3. Ki kikkinohamagunan ke totamang kegunayanimak entiyangun.—4. Ki songitehechkawenimigonan kitchi eka pwanawittong eninang Kige-Manito.—5. Ki machkawenindamihigunan kitchi eka ningut-iji agatchittong kit ayamiewininan.—6. Ki pinahamagunan ki mitone-nindjiganinang kitchi guttamang pattatowin.—7. Ki totagunan kitchi eka sekihigoyang nipuwin, kitchi eka guttamang tchi nanekatchihigong gaie gutch kitchi nissigong Kige-Manito ondji, gaie ayamiewin ondji.

D. Wekunen minawatch endotonang songitehechkagewin *Sacrement* ka ijini-kateg?

R. Songitehechkagewin ki totagunan kitchi napitch songenindamang ej-anokkittawang Jesus, gaie minissinowatis-

sing kitchi mikanang Matchi-Manito; kitchi eka chagutchihinang nananj kitchi nipong.

D. Wekunen-wendji kinahamagong nijin kitchi ayamie-nomininang ka ayamie-ganawabitch.

R. Mi-wendji kinahamonang, ka ma wikat ta kassihikassinon ki tchittchagussinang ningutin hi kich ayamie-nominigong.

D. Wekunen-wendji nanint ka ot abatchitossinawa ej anawi ayamie-nominintwa?

R. Mi ihm ondji, ej eka gweyak iji-ayangwamenindamowatch hi ki ayamie-nominintwa.

D. Anin endotang ka ayamie-ganawabitch ej-ayamie-nominatch?

R. Tessinindjini o chtikwanining ke nominadjin, o gaganottamawan, ot ayamie-nominan, o tchipayattikonamawan, gaie menandjich o passanowewan.

D. Anin ejininiwagak ij gaganottamawatch?

R. Ka ayamie-ganawabitch o pagus-

seniman Wenichichinitjin-Maniton kitchi pindikawanitch eyamie-nominatjin.

D. Anin ejininiwagak hi tessinindjinitch o chtikwanining ka ayamie-nominatjin?

R. Mi apitch pandikawatch Wenchichitch-Manito meno-ayamienomini-mintjin.

D. Wekunen-wentji memandjich passanoweonang eyamie-ganawabaminang apitch ayamie-nominigang?

R. Kitchi ekassa nichkenimangwa nechkeniminanguk, kitchi gaie pekatch kotakenindamang ningut entiyangun.

D. Wekunen-wendji tchipayattigokkonang?

R. Kitchi eka agatchittamang ayamiewin.

D. Anin ke towatch chaye pechutch kitchi ayamie-nominintwa?

R. Onichichin tchi bwa machchi kegun eka mitjissigwa; ka onichichinsinon onzam sassekakunayewatch; ka gaie onichichinsinon kitchi kotaki kunayewatch; ka onichichinsinon awiyak

nawakikkwenitch apitch ke nominintch,
ka ta tetakikkweni, mitchi ta inapi.

D. Wekunen ke nabowetch awiyak
ibwa machi ayamie-nominintch.

R. Mi yuhum ke nabowetch:
Kige-Manito n'osse ki tepweton, ni
tepwetan gaie kakkina ka iji kikkino-
hamagoyang ej-ayamiayang. Kit ana-
mikun Wenichichiyen-Manito, ki pihin
kitchi pindikawiyen ni tchitchagussing
kitchi muchkineskagoyan kit ayamie-
onichichiwin. Ki makatenimin epitch
nitta chawenimiyan ej anawi ki nichki-
hinan. Ondjita songa nind anwenindis
minigik ka kich pattatiyan, keget ond-
jita songa kis sakihin enigukkuteheyan,
keguna kakik ki apittawin ni tchitcha-
gussing, keguna ki chawenindagussiyan
eji kijikkamawanichchiyamintch Jezus.

Mi gaie yuhum ke nabowetch:
Ondas ijan Wenichichiyen-Manito, &c. . . .
Mi gaie yuhum pejik *Meno-Manito*
chawenimichinam, ni tehinang asso otittan,
&c. . . . 3. Mi yuhum keabatch pejik
Ondas ijan ka kijiyang, &c. . . .

D. Anin ke totang awiyak ki ichkwa ayamie-nominintch?

R. Ta awi antj nipakwi kitchi nak-kumatch Kije-Maniton; ka ta inenindam, napitch ni chawenindagus hi ki ayamie-nominigoyan, ka wikat nin ga wanenindansin nind ayamiewia.

D. Wekunen ke nabowetch ki ichkwa ayamie-nominintch?

R. Mi yuhum ke nabowetch:
Kit anamikun Wenichichiyen-Manito; ki nakkumin hi ki chawenimin, hi kij ayamie-nominigoyan; ki mannadjihin enigukkuteheyan. Ki pagussenimin, chawenimichin kakik wakwing kitchi witchminawassiminan. Ganawenimichin tchi eka kegun chagutchihigoyan ni mitonenindjiganing mayanattak; chawenimichin kitchi mino-pimatissiyan, mi dach ki nipuyan wakwing kakikke kitchi widanakkiminan. Katinakis ingi.

N° 4 BOWEWIN

*NAYABOWENG IBWA MACHI MITONB-
NINDIZONG WA KOPESEWINGIN.*

Kwenatch Jezus ka agwachchimi-
yan, kin ka gakikke sakihin, kin pina-
wigo wentji pihyan nin ka kakikke oji-
minan, kin sa nongum ki ki pinahan ni
dehing kitchi pikizissipattoyan. Ond-
jita songa nin depwettan, ki ki minak
mekkatewikunayek kitchi kassihama-
wawatch payattatinitjin. Ondjita keget
nin depwettan, kin sa ki nabichkag mek-
katewikunayetch kitchi kizissipattotch
kakkina minigik ka wiyakichkagoyan
pattatowin. Ki wabama enassam-apian
ki nitjanis ka kitchi anwettok ; ki non-
damawa ekitomagatinik o te ka kitchi
gachkenindamomagatinik ; kin sa ki ki
nichkihigun nim battatowin, gaie kak-
kina nin gi nichkihak wakwing enda-
nakkitjik ; kwatissiyan anawi wenidja-
nissingin ket inenimin, enowek itach,
enabigis chawenimichin kin ka nitta
chawenimatwa payattatidjik. -- Nind ap-
penimun ki kijewatissiwin, keyabatch
nongum ki wi kassihamaw nin battato-

win. Kassa ki nandawenimassi kitchi niputch payattatitch, tayagwatch ki nandawenima kitchi awenindizotch gaie dach kitchi pimatissitch. Tebenimin, anwenindizohichin, nin gat anwenindis dach; ka win wikat ki nitta pakittenindanzin o te ayanwenindizomagakin; nind appenimun ki yaw kitchi andjittawiyen nin de, kin etta nichikke nind appenimun.—Ka napitch o nisita-winagohigussissin pattatowin nitichitchagus, o kawenindamihigun epitch manetnik a pattatowinan, ki nichkatisiwin eta o ki wikwatenindan; kwatisiyan kanage ke kijikkabamin. Ki ki pon-sakihin, kin nichikke ka sakihigussin! Awenin ket attotch ni chtikwaning nipi kakik kitchi ondjikawik nissipingon hi ki nichkihinan! Keguna ki teb ondjikawik nissipingon kitchi apitchi kassihabawek kakkina nim battatowin! Keguna gaie nin tebenimin ki ijiyan ka inatiban *Madelene* apitch pa nipakkwittok enassam-apiyan kitchi songa anwenindizotch, keguna ki ijiyan gaie nin: “kitchi nibina pattatowinan

“ki kassihamago, ondjita songa hi kis-
 “sakihin.” Kije-Manito tebenimin kin
 kakkina mizi kegun mechchich waya-
 bandaman enowek kayataganiwangin
 ni mitonenindjiganinang, kin nichikke
 ki kikkenim eji teheyen.

Enabigis n'osse chawenimichin, was-
 seyendamadawichin ka tibikatissimagak
 nin de, kitchi kikkenindizoyan eji kik-
 kenimin. Inenimichin kitchi kakkina
 wewenint kikkenindaman nim battato-
 win ke iji kikkenindaman apitch ke pi
 mitonenimin. Kije-Manito n'osse, kin
 awachchamens wayasseyatissin kizis
 epitch wassezitch, wasseyadjitton nin
 de, wewenint kitchi kikkenindaman
 nim battatowin endassoyagak gaie
 epitch manattak, kitchi kikkeninda-
 man gaie kakkina wentji awacchamens
 manattak nim battatowin; kitchi we-
 wenint windamawak nayabichkok mek-
 katewikunayetch, ka dach win kitchi
 wij kiwanimassiwak, ka gaie nin kitchi
 wayejintizoyan. Katinakis ingi.

« Mitonenindizun dach nongum minigik ka kich pat-
 « tatiyan ka nijwassweyagak kije pattatowin; mi
 « onum: . . . Sassekawin, sasakissiwini, manatissiwini,
 « missawenintiwini, nipatissiwini, nichkatissiwini, kitti-
 « miwin.»

« Minawatch keyabatch mitonenindizun minigik ka
 « kich pattatiyan iki patta-inenindaman, iki patta-mis-
 « sawenindaman, iki patta-weyan, iki patta-totaman
 « gaye, gaye gutch iki totanziwan minigik eneninda-
 « gussin kitchi totaman.»

« Mitonenindizun gaye keyabatch minigik ka tepa-
 « bigessiwani mitasswi Kige-Manito ot animitagussi-
 « winan, gaye minigik ka tipahigessiwani ka ayamie-
 « ganawabaminang ka nijwatsininik ot ikitowinan. . . .
 « Mitonenindizun minigik ka pattatotawatwa pekkit-
 « jik. Akindan gaye anin endassing ki pattatowinan
 « kakkina endassweyagak.»



NABOWEWIN NAYABOWENG KI ICHKWA
 MITONENINDIZONG IBWA MACHI
 KOPESSEWING.

Makataatch entiyan Kige-Manito
 Nosse! nin ka kitchi chaweni-miyan-
 ban, nin ka yagwachchimiguyanban ki
 kwissis o miskwi enowek dach keya-
 batch ki ki kitchi nichkihini. Mi wentji
 animenindaman, kije pattatowin iki
 wiyakichkagoyan nin gi apitchi wanitton
 Kije-Manito ot ayamie-onichichiwini,
 nin gi wanitton gaye kakkina minigik ka

kachkittjikkemagakkiban ni mino inatis-
 siwiniban, nin gi wanitton wakwing daje
 minawanigussiwin achaye ka kachkiton-
 yanban; iki kije pattatiyan tanassak nin
 gi nissa ni tchitchagus, nin gi kitchi nich-
 kiha Kige-Manito; nin gi kachkittwa-
 tisson kitchi kakikke mokkwakkizoyan
 anamakamikong; win ni kije pattato-
 win nin gi makkamik Kije-Manito, nin
 gi awakkanik Matchi-Manito. Missa
 ihm ka endotaguyan ni Kije-Pattato-
 win. Pattatowinins dach o ki wanad-
 jihigon ej ayamieonichichippan ni tchi-
 tchagus; pattatowinins iki wiyakichka-
 goyan, nin gi nissitamenindamiha We-
 nichichitch-Manito, nin gi wanadjitta-
 mowan ottapinas nin dehing, nin gi an-
 wettawa, nin gi nissitamenindamiha
 Kije-Manito ka nisso pejikotch, nin gi
 kachkitwatizun nakkawe-mettizowining
 kitchi daje animissiyan.

Enabigis chawenimichin Kije-Manito
 tebenimin chawenimichin ki kwisis Je-
 zus ondji, pisindan eji kijwemagatinik
 ej otikkinindjitch gaye ej otikkizitetch.

Kijikkabandamaw dach o sitan ka papa
 noppananapanen payattatinidjin, kijik-
 kabandamaw gaye o nindjin nibina ka
 chawenimapanen gittimagissinidjin. Ki
 pagussenimin kijikkabandamaw gaye ki
 kwisis o chtikwan o minensakhanjin i zi-
 zokkwebizotch, gaye ej sagiskwagatinik
 o chtikwan nin ondji, kijikkabandamaw-
 gaye o te ka kitchi sakihapanen payat-
 tatinitjin. Mi dach ke ondji chaweni-
 min Kije-Manito ka tibenimin. Kin
 kwenatch Jezus ka yagwachchimiyan-
 ban, andjittawichin nin de, ejitehen kit-
 chi iji teheyan; songa witokkawenimi-
 chin kitchi chingenindaman pattatowin
 eji chingenindaman gaye kin, kitchi sa-
 kihinan dach eji sakihigussin. Epitch
 songa gachkenindaman ki pi nipakwit-
 ton, pekich ej pakittehaman ka kitchi
 anwendizomagak nin de ki pi windamon
 dach nongum: oh Jezus kwenatch
 N'osse enigukkuteheyan nin chingenin-
 danan ni matchi aintowininan ka ondji
 kitchi abwezoyanban kittikaning *des*
Oliviers ka ijinikateg, ka ondji kitchi

passanjeogoyanban, gaye dach ka ondji patakkakehogonyanban tchipayattigong.

Gaye kin kwenatch Mani ka wabamatiban ki kwisis Jezus ka kitchi animissigubanen nin ondji, kin ka witchanimissimatibiban gaye, kin ka nittachaweningen, kin ka gaganottamawatwa payattatitjik gaganottamawichin gaye nin nongum kitchi mino kopessewiyan, kitchi eka wanadjittoyan ihim ka kitchitwawenindagwak Sacrement-Kopessewin ka iginikateg.

Gaye kin ni kitchitwa anjenim naningim ka wabamiyanban iki pattatichkian, witokkawenimichin wewenint kitchi pakittenindaman nim battatowin nongum wi kopessewiyan widjihichin dach kitchi eka wikat minawatch pangichchinan pattatowining.

Kije-Manito N'osse, &c.....13.

NABOWEWIN NAYABOWENG KI ICHKWA

KOPESEWINANIWANG.

Ki mamoyawamin Ke.-Mo. N'osse ka kis iji chawenimiyan iki pisindawin minawatch nongum iki windamon nim

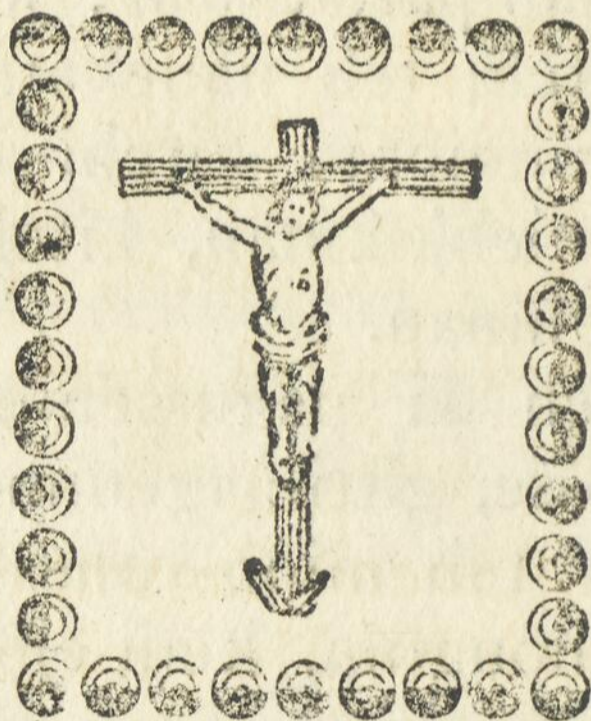
Battatowin. Epitch kijewatissin kassa win ki kis kijikkabandazin nim battatowin epitch manek epitch gaye manatak; mi netta ka kijikkabandaman ki kije chawenindjikewin; kakkina ni matchi ahintowinan itach tanassak anamak-kamikong ki kis appakittonan. Ondjita ki mamoyawamin ka kis iji mino totawim, kawin wikat nin ga wanenindanzin epitch chawenimin nongum, ondjita keget nich chingenindan ni matchi ahintowin kin ondji ka ondjita onichichin, ka ondjita sakihigussin, ondjita ni-gachkenindam mekka wiyen kakkina minigik ka kis nichkihinan, achaye ondjita nin gi inenindis ka minawatch nin gattissi, witokkawenimiyan dach, minigik ke pimattissiyen kakik nin ga wi nanekatchihitis, epitchiyen kakik ki ga wi kakizomin; kwatissiyen ke ondji nipuyan kitchi wi kakizominan! Kwatissiyen nin tibinawe nimiskwing kitchi ondji kizissipattoyan kakkina ni matchi ahindowinan! Mi enenindaman nongum, Kije Manito N'osse, epitch songa anwenindizoyan anamite: anich dach ki

kikkenim epitch nitta pwanawitoyan, epitch chewezimagak nin de, epitch pisinatissimagak ni mitonenindjigan, epitch wibatch pangichchinan pattatowining. Enabigis dach chawenimichin witokkawenim chin kakik kitchi ochchindaman pattatowin gaye gutch kakina payattatotagemagakin, witokkawenimichin kitchi eka wikat minawatch anwettonan, kakik wewenint kitchi tipahigeyan kakkina minigik enenindagussiyan ej ayamiayan, kakik kitchi ochchindaman pattatowin; witokkawenimichin kitchi teb nanekatchichitizoyan, chawenimichin kitchi eka wikat minawatch nichkihinan, kitchi eka wikat pon-sakihinan.

Minawatch ki pagussenimin, Kije-Manito N'osse, gittimagenimichin kichpin eka ki teb mino-kopessewissiwan minawatch nongum, koni ej eka ki teb mitonenindizossiwan, koni ej eka wewenint ki wiudamawassiwak ka makatewikunayetch, koni gaye keyabatch ej eka ki teb anwenindizossiwan. Ketna gwetch nin ni piziskenindam, ket na

ni gachkitto kitchi gwayakwattjihitizo-
 yan, nin kakik ka nitta pachchikkwa-
 tissiyan. Enabigis dach chawenimichin,
 kawin kijikkabandanken nim bwanawit-
 towin, mi eta mikkawenindan ki kitchi
 chawenindjikewin, gaye ot animissiwi-
 nan ki kwisis Jezus ninawent ondji ka-
 niputch, ondjita dach chawenimichin,
 kassihamawichinminigik ka kich patta-
 tiyan. Katinakis ingi.

Chawenimichin Kije-Manito chawe-
 nimichin, &c.....



ANAMENSIKKE-NABOWEWIN.

Iowa Machi Anamensikkaniwang. —
 Kije-Manito chawenimichin kitchi we-
 wenint pakittinamonan anamensikkewin

kitchi nap wewenint mannadjihinan,
 kitchi gaye wewenint mamoyawaminan
 minigik ka mino totawim, chawenimi-
 chin kitchi anwenindizoyan kitchi ondji
 nap kassihamawiyan nim battatowin,
 ej appenimoyan ki kwissis Jezus ot ani-
 missiwin.

Ej-madji anamensikkaniwang.—Tebe-
 ninin ej anawi kikkenimatwa anichina-
 bek ejitèhewatch, ej anawi wayabanda-
 man gaye nin ejiteheyan, enowek itach
 ki wi windamon nongum nim battatowin.
 Ni windamawa Ke Mo &c8.

Nogwenimichin ka kije manitowiyan,
 keget anawi nin ni kitchi pattahintint,
 anich dach awachchamenj ki kitchi cha-
 wenindjikewin kawin nitta ichkwases-
 sinon.

Kitchi guttanenindagwat ej aping, mi
 indaje endatch Ke Mo ; mi gaye ij ichk-
 wandemiwang wakwing : segenindan ni
 tchitchagus epitch kitchitwa mikiwami-
 wang : tibenindamoj kakkina ki mikka-
 wenindamowinan Ke Mo, kakkina kit
 inenindamowinan Songa pakitinamaw,

mamoyawam gaye ikij inenimik kitchi pindiken endatch : pagussenim kitchi otissigoyan o chawenindjikewin.—Ketchitwawenindagussitch &c.....

Kyrie — Ke Mo Weossiminang, chawenimichinam : Jezus ka pitch agwachimiyang, chawenimichinam : menomanitowiyang chawenimichinam, mi ket iji chawenimiayang ki kije chawenindjikewining. Ki tibenindamonin ket ani ahintiyan, gaye ket ani ijimitonenindaman ; kakkina nind ani ahinenindamowinan Songa ki pakitinamon.

Gloria in excelsis Deo.—Anjeni nikamowin.—Ketchitwawinintj ichpeming Ke Mo. Waktu akkamik gaye wanakivatch meno-teketjik. Ki kitchitwanikamohinimin. Ki minominimin. Ki mannadjihinimin. Ki kitchitwaweniminimin. Ki nakkominimin, napitch ka kitchitwawenindagussin. Tebenimiyang Diu Wakwing wekimawiyang. Diu wekossisiyan mizi ka nittawitanka Tibenimiyang pejiko weosseyan Js. Kus. Tebenimiyang Diu Ka sassakiwi-

nigon Diu Ka Weossimatch. Ka kassihamawatwa payattatitjik chawenimichinam. Ka kassihamawatwa payattatitjik chawenindamittawichinam eji pagusse-niminang. O kitchiniking k'os epiyan chawenimichinam. Kinma nichikke ki kitchitwawenindagus. Ki pejiko tibi-nindan. Ki pejiko ichpenindagus Js.-Kus. Kiki winichichitch manito Diu Wekussissitch o wasseyatissiwining. Katinakisingi.

Minawatch Kotak—Ketchitwawinintch ichpeming Ke Mo. wakitakkamik gaye wayanakkiwatch anichinabek menoteketjik, meno inenindangik. Ayanjeniwiyeg kinawa nittam ki kis windamawawak anichinabek ikis nikigubanen Ke Mo o kwisissan ikis anichinabewihitisonigubanen; ki kis mamawi papawidjiwawaban megwatch akking pimatissigubanen, kakik ki papaganawabamawaban pepa ahintogubanen, witokkawenimichinam nongum ij widjiweyang ij anamensikkaniwang, kitchi gaye ninawent eji mino-mitonenindamang eji mino-mitonenindamowegubanen apitch nenekat-

chihawintibanen Jezus : gaganottama-
 wichinam kitchi Songa mannadjittawang
 o kitchitwa animissiwini. Jezus Kus.
 kassihamaw kakkina o pattatominawan
 anichinabek : chawenindammittawichi-
 nam eji pagusseniminang. Jezus K'os
 o kitchinikingepiyan chawenimichinam
 kitchi gaye ninawent kis apiyang ej apin
 apitch ke pon-pimatissiwangin.

Oremus.—Tebenimiyang, songa ki
 pagusseniminimin, gaganottamawichi-
 nam kakkina endachiyang tchi eka wi-
 kat anamakamikong animissiyang.—
 Enigukkutahayang kit andjissigabawit-
 tonimin, mintjimenimichinam ki cha-
 wenindjikewining kitchi eka chagotchi-
 hiamintch changenimiamintch; mi iji
 chawenimichinam ka kis iji chawenimia-
 miutch Jezus Kus. ikis nipogubanen
 tchipayatikong ninawent ondji.

Oremus.—Kitchitwa Joseph, songa ot
 apenimonawa ki yow eyamiadjik kegun
 pegussenimawatjin Kije Maniton, songa
 pagussenindamawanijichchinam kitchi
 eji chawenindagussiyang eji chawenin-
 dagussiwanbanen eni-nipuwabanen;

Jezus, kaye kitchitwa Mani ki kis nipukkanigok, kekuna gaye ninawent ki iji nipukkanigoyang apitch ke ponpimatissiwangen.

Epitre.—Ke Mo songa nin depwettamowan kakkiua enansinaikewagubanen kitchitwa anichinabebanik ka songa ayamiagubanenik: ka memandjich nind anwettamowassiwananik eni inansinaikewagubanen ayamie animittagussiwining inakkake, kin ma mega ki mikkawenindamonabanik eni inansinaikewagubanen, mi wendji tepweyenindamawagwa ot animittagussiwiniwan, kin ma ki kis inanzinamawimin apittenindagwat, kit ani kikkinohamawimin ket ani tiyangiban gwayak wij pi madjihitizoyanganban. Keguna ki iji gachkittoyanban: kekuna gaye ki iji kikkinawenimawaban eji nibuakkawagubanen.

Nittam i Passikwinaniwang.—Jezus-Kus. mi ondjita kit animittagussiwinka iji animittagussitech nongun ka anamensikketch, ayamie—missinaigan ij

wabandang: ka ochcha win ni nissito-
 tawassiwa ij daje animittugussitch, eno-
 wek ni missawenindan kitchi pagakit-
 taman kit ikitowiniban; ki missawe-
 nindamitton eni-ikitowanbanen, echkam
 songa kitchi tepwettaman: mi wendji
 passikwiyan nongum kitchi kikkenin-
 dagussiyan songa ij tepwettaman ki kit-
 chitwa animittagussiwin gaye songa ij
 mannadjihinan. Mi wendji tchipaya-
 tikonamatizoyan nis skatikong kitchi
 eka agatchitaman ayamiewin, ni tchi-
 payatikonamatis nin doning kitchi kak k
 wewenint mino tachindaman ayamiewin,
 ni tchipayatikonamatis gaye nin deing
 kak k kitchi tepwettaman gaye tipahi-
 geyan ayamiewin. Ka memandjich
 nind anwettanzin eji kikkinohamago-
 yan. Ni missawenindamawanissak kak-
 kina anichinabek, kekuna kakkina ki
 kikkenindamowatch kit animittagussi-
 win; kekuna ki pamittokkwa: kekuna
 enigukwakkamigak ki kitchitwawini-
 gon, eji kitchitwawinigon wakwing.

Credo.—Nind depwettawa pejiko
 Div. &c.—7.

*Ka Makkatewikunayetch o Pakitinamawan Kije-
Manito Pakwejiganensan Gaie Chominabo.*

Kitchitwa nisso-pejikowin, eni inenindang ka anamensiketch, mi gaye nin eni-inenindaman; eni ikitotch mi gaye nin ket ani ikitoyanban kachkittoyaban, ki pakittinamon pakwejigan, gaye kamiskwagamik nongum ket ani aya-mittaganiwang: ki pakitinamon gaye ni tchitchagus gaye ni yow; chawenimichin, apitchi kassihamawichin ni matchi ahintowin; apitchi wanenindamawichin nim battatowin: nongum ke titch pakwejigan gaye kamiskwagamik, kata apitchi anguttaganiwan; Jezus o gat owiyawinottawan pakwejigan, o gat o miskwinottan chominabo; mi gaye kakina nim battatowin apitchi iji anguttawichin; antjittawichin nin de kitchi mino-teheyan. kitchi eka kegun mayanattak akokkik nin dehing: apitchi mino tehechkawichin kitchi songa sakihinan.

Apitch Ketchi Nikamutch Ka Makkatewikunayetch.

Ki mamoyawamin, tebenimiang. ikis kijibiyan; ki nakkumin ikis kassihama-

wiyan ij otchitchagoyan apitch ka-sik-
kahandagoyan; ki nakkumin ikis oni-
djanissimiyan, kaye ikis onidjanissimi-
goyan kitchitwa ningot-o-winzowin.—
Ka kegun apittenindagwassinon eji cha-
wenimin: enowek keyabatch, epitch
gittimagissiyan, epitch pizinatissiyan,
nin gi matchi pimatchihitis, ondjita nin
gi babanatjiha ni tchitchagus iki pame-
nindaman pattatowin; chawenimichin,
ka nitta chaweningen, chawenimichin
kitchi iji anwenindizoyan eji anwenindi-
zowagubanen kitchitwa David, Ka.
Pien, Ka. Mani-Madelen gaye, keku-
na anwenindizowining ki ani pon-pi-
matissiyan; kitchi songa nanekatchi-
hitizoyan inijik ka ki nichkihinan; ni
kikkenindan, ka sesik enowek kata teb
inenindagwassinon inigik ka kich pat-
tatiyan, mi wendji achchitenindaman
nind anwenindizowin ki kwissis ot ani-
missiwining; epitch animenindamawa-
nissinoangubanen ni matchi pimatissi-
wininan kis sagapwezonottamoguban
kinigawi miskwi kitchi nissintch, cha-
wenimichin Jezus ontji ot animissiwini,

kitchi kisissabawatjin ij otchitcha-
goyan.

Js. Kus. ka kis pitch agwachchimi-
yang ichkuteng, ondjitta nind depwet-
tan eni-ikitoyanban, ka memandjich
nind anwettanzin ; nind depwettan gaye
kakkina eni iji ayamie kikkinohama-
goyan, songa nind apenimon ki chawe-
nindjikewin ; chawenimichin kit ani-
missiwin ninawent ondji, wakwing kit-
chi otissabandahigoyan : kin neta ond-
jita ki niganenimin ki sakihin eniguk-
kuteheyan : ni sakihak gaye kakkina
anichinabek kin ondji, eji sakihitizo-
yan mi eji sakihagwa : ki nakkumin
inigik ka iji chawenimin, ki pakitina-
mon inigik ket ani-ahintowanen ketako
pimatissiwanen.

Ej Uchki Matowessing.—Kitchitwa-
wenindagussi***. Diu. ka tibenimi-
nang: Makkatenindagwat eji nagus-
sitch ; o mannadjihigok Wakwing Anje-
niwok gaye ondaje akking anichinini-
wok.

—
Tebenimiyang ki kis kijittawimin kak-
kina akking endagogin : ondjita tepwe-

yenindagwat kakkina anichinabek kin
 iji pejiko mannatjihi kwa ; kin neta
 ondjita ij pejiko sakiikkwa ; kin ma
 netta ondjita ki pejiko-sakihigus ; kin
 ma kakkina kit ani ontinamawimin
 wentji ani kwayak-kwatissiyang : ki pa-
 gussenimin Jezus ontji ot ijinikazowi-
 ning, apitchi kassihan kakkina matchi
 ahintowin ka chingenindamanin ; mi
 wan gaye anamakamik eppakinigo-
 watjin anichinabek, anawi wakwing kit-
 chi minawassiwagubanen anawi ki iji
 kijiawintwaban. Chawenim ka kije aya-
 mie ganawabaminang Jezussan ka
 mayanabichkawatch ; chawenim gaye
 ka ayamie ganawabitch genawenimia-
 mintch ; chawenim kekkinohamawia-
 mintjik kitchi ani inenindamowatch
 enenimatwa ; chawenim gaye kije ini-
 niwak genaweniamintjik kitchi mino
 ayangwamenindizowatch, kitchi gaye
 mino ayangwamenimawatch ot uchkini-
 kimiwan : echkam kit ani pagussenimin,
 chawenim payattatitjik kitchi apitchi
 anwenindizowatch ; chawenim songa
 eyamiatjik echkam songa kitchi ayamia-

watch : chawenim gaye ondaje endana-
 kitjik kitchi wewenint deb satwawatch
 enenimatwa ; gaye dach awiyak nichke-
 nimitch kawin ningut inenimieken ;
 ningot iji ejawatjin chawenim kitchi
 waki papamatissiwach : songenimich-
 kaw gechkenindangik, ayakussidjik,
 gettimagissitjik gaye songenindamich-
 kaw : chawenim gaye wa pon ipimatis-
 siwatjik Wakwing kitchi otissabanda-
 mowatch.

Nijin Ej-Matwessing.---Mitonenindan,
 ni tchitchagus, wewenint mitonenindan
 nongum ket ingi anamensikkaning,
 gutch ket apitch animittagussitch ena-
 mensikketch, Jezus o ga wiyawinotta-
 wan pakwejiganens ; kamiskwagamik
 Jezus o miskwi kata inini, napitch kit-
 chitwawenindagwat eji mechkwatossek ;
 epitch sakihinang mi wentji ininik ;
 ayangwamenindizun dach, ni tchitcha-
 gus.

Ej-ichpiniganiwitch Kitchitwa Hosti-
win.—Kin Jezus nongum ka ichpinigon-
 enowek eka nagussin, enowek songa

kit indaneniminimin kitchitwa hostiwining ket ichpinigon mechchagwam i anamensikkengin : kit ikitonaban, nin gat atton ni yow kitchitwa hostiwining, gaye nin gat atton ni miskwi ayamie-minaganing, ket na ki nitta kinawichk, ket na gaye kegun ki pwanawitton, napitch inaw ka iji kijwen, mi wentji tepwettamang, minawassik ineniminam kitchi pejiko tepwettonang.

Ej-ichpiniganawang Kitchitwa Minagan.—Kin gaye Jezus Kitchitwa ki miskwi ka ichpiniganawang ayamie minaganing ondjita ka wich nissigoyanban. epitch kijewatissin ka kiki chawenindizossi, awachchamenj ki ki chaweniminin, kikinawatch ki yow ki ki pakitenindan kitchi eka ichkuteng appakinigoyang, mi wentji makkateniminang kin keje-manitowiyang, ninawent dach enichinabewiyang pingwing onzam nindapittenindagussimin, ki pejiko sakihimin Jezus, minawassik eneniminam kekuna pejiko sakittoyang ej papamitto-

nang.—N'ossinan Wakwing—kit ana-
mikkun.

Ki nakkumin, kwenatch Jezus iki
agwachchimiayang tchipayattigong iki
nipuyanban : ki nakkumin gaye iki cha-
wenimiayang ej anamensikkaniwang, kit
inenindanaban, endasso kijigak kata uch-
ki inenindagwat iki nissigoyanban, ka-
kik nap kit ani agwachchimin epitch
sakihiyang : kwenatch entiyen ka kis
apitchpahitizoyan, mi dach wakwing
ejan, mi ma wentji songitehechkawi-
yang ij ayamiayang, mi ma wentji son-
genimoyang kitchi apitchpahiyang ki
pon pimatissiyang, gaye Wakwing kit-
chi kakikke minawassiyang.

Ktwa. Mani Ninginan, Ka. Michel,
kakkina ayanjeniwieg kakkina mamawi
Wakwing endanakkiyeg payattatissiwiek
ondjita ketchisk gwayak kwatissiyeg,
nakkumawanichichchinam Jezus ini-
gik ka kis iji chawenimiamintch, gaye
inikik keyabatch ket ani eji ani cha-
wenimiamintch, witokkawenimichinam
songa kitchi nibuakkayang, keguna ki

inenimiamintch Ke. Mo. ka inenina-
gubanen nibina payattatinitjin songa ka
kis anwenindizowagubanen nongum
dach Wakwing menawassitjik.

Gaganottamaw Neputjik — Jezus ka
pitch agwachchimiayang, ka nissigon,
anamakkamik ki ki pindike ; ki kis awi
agwachchimak kakkina-nebuakkaguba-
nenik Wakwing ij ijiwinatwa ; mi gaye
iji chawenim kakkina nekawe metti-
zotjik, awi agwachchim, Wakwing iji-
wich kakikke anwebiwining awi achchi
songa kitchi gaganottamawiamintwa.

Pater. — *N'ossinan Wakwing, &c* —
Weossiminang Wakwing ka nagussin,
kakik ki ganawenimimin, nind apitchi
gittimagissimin, ka kegun tibinawe ni
gachkitossinanan : ki pagussenimin Js.
ot ijini kazowining ondji, eji manessi-
yang ij otchitchagussiyang gaye ij owi-
yawiyang, chawenimichinam kitchi kik-
keniminang, chawenimichinam gaye
kitchi kikkenindizoyang : kikkenimi-
nang ki ga sakihinimin : kikkenindizo-
yang nin ga manenindizomin ; macha-

wenindamiskawichinam kitchi songa
 tepwettonang ej kikkinohamagoyang,
 kitchi eka wikat anwettamang, kitchi
 eka wikat pakitenindamang ayamiewin,
 songa kitchi achwenindamang kitchi pa-
 pamittonang. Ka win mikawenindama-
 wichikangen ni matchi ahintowininan,
 apitchi kassihamawichinam. Echkam
 kit ani pagussenimin, gweyak iji mito-
 nenindjiganihichinam enenimiyang, kin
 néta kitchi tepah-ganinang enigukkute-
 heyang kitchi sakihinang, gaye kitchi
 sakihangitwa kakkina anichinabek eji
 sakihitizoyang kitchi iji sakihangitwa,
 songitehechkawichinam kakik kitchi
 pamittonang, kakik gaye kitchi pamit-
 tawakintwa ni kije ininiminanik, kitchi
 eka ningut ani ijininiwakissiyang kitchi
 apitchi ani gwayak kwatissiyang, kitchi
 ani pekatendagussiyang, kitchi gaye
 nittachawenindjikeyang. Chawenimi-
 chinam kakik kitchi pakitinamonang
 ningut eji animissiyangin. Machka-
 wenindamihichinam kitchi eka pame-
 nindamang anutch egoyangin, kitchi
 eka ningut inenindamang ningut ehi-

goyangin gaye payapinottagoyangin ;
 ayangwamenichinam kitchi eka chagot-
 chihiamintch Matchi Mo., kitchi eka
 Matchi Webihiamintwa anichinabek,
 kitchi eka gaye ninawent pattatotatizo-
 yang, kitchi eka wikat pattatiyang.—
 Achitenimichinam ki Kije Manitowiw-
 ning : ayangwamenimichinam kitchi eka
 anamakkamik apankichinang ki pon-
 pimatissiyang, Wakwing kitchi otissa-
 bandahiyang, kitchi kakike mannadji-
 hinang, kitchi gaye kitchitwawininang
 epitch kigewatissin.

Js. Kus. Ka kassihamawatwa payat-
 tatitjik, chawenimichinam*. *

Js. Kus. ka kassihamawatwa pa-
 yattatitjik wanakkihichinam.

Js. Kus. ka kassihamawatwa anichi-
 nabek o matchi ahintowiniwan, ka mik-
 kawenindamawichikangen inigik ka
 nichkihichinang : wanakkihichinam, ayang-
 wamenimichinam, kitchi eka awiak
 nichkihakintch : witokkawenimichinam
 kitchi eka kegun chagotchihigoyang

mi ket ingi kitchi apitchi minawassiyang
Wakwing.

Apitch Kwamuniwitch Mekkatowiku-
nayetch. — Is Kus. ka kis agwachchimi-
yang, epitch mino enindaman kitchi
witch-danakkimatwa eyamiatjik, kit
inagwayenindamawimin ki yow Ka.-
Hostiwining, ki ki nawanjawenindan
ni tchitchagussinanan kitchi apin, songa
kit inenimimin kitchi tipississatwayang
kitchi komuniwiyang, epitch sakihatch
ni tchitchagussinanan, kawin pekininik
kotak mitjim ki kis kijittawassiwa, ki
yow eta kit achchama ni tchichagussi-
nan, songa ki mikkomimin ke ondji
minawassiwatc Wakwing menokom-
muniwitjik, ka kegun ta nondessessinon
eji chawenimiyang : nin nind indowin
wentji gittimagissiyan ke ondji eka ko-
muniwiyang ; keyabatch enowek epitch
kijewatissin, nin ga chawenimik kit
inenimin ; songa ki pagussenimin tebe-
ninin ningut otton ikiton, ki ga nod-
jimoha ni tchitchagus. Chawenimichin
kitchi kachkittoyan naningim kitchi wij

kommuniwiyan : mi ma apittchi nenda
wenindaman epitch songa kitchi apitte-
nindaman iim manito Midjim.

*Apitch Eyamittwagetch Mekcatewikun-
nagetch.*——Kitchitwa nisso-pijikowin
chaye nind ani ayamittwagunan ena-
mensikketch, eji ayamittawagubanen
Js. Kus. eyamianigubanenan chaye
Wakwing kitchi ijatch, keguna ki iji
echowenindizoyang eji echowenindizo-
wagubanen, kitchi iji chawenindagussi-
yang eji chawenindagussiwagubanen.

Kitchitwa Mani nin ginan, ka ki kik-
kenindanzin witikentiwin, Wakwing
gaye akking kit okimakwewinimigo,
apitch petakkakwawanwintibanen ki
kwisis Jesus tchipayattikong chaye eni
niputch, nin gi chawenimigunan kitchi
okiminang, mi eko chawenimatwa eya-
miatjik ; mi eppahiweyang ki yow : ki
pagusseniminim kin ka nitta chawenin-
gen, pagussenindamawanissichinam kit-
chi iji chawenimiamintch Ke. Mo., eji
pagussenimangitch.

Ke. Mo. epitch kitchitwaweninda-

gussin, tepweyenindagwat epitch gut-
tanemikwa anjeniwak: makatenindag-
wat ij eka chingenindammittawyan
nongum ka iji pagusseniminan, ij anawi
nitta pattatiyan. Ke. Mo N'osse gitti-
magenimichin, kassihamawichin mini-
gik ka pi iji wanachkwewenindaman
nongum iki anamensikkaniwang, cha-
wenimichin kakik kitchi sakihinan, mi
ket tingi wakwing kitchi minawassiyen.



Kaweyassam-o Ayamianiwangin.

Kije-Manito N'osse * ondjita nind anwenindis ka
kis nichkihinan i pattatiyan.

Ondjita ki kitchitwawenindagus, mi wendji chinge-
nindaman kakkina ni matchi ahintowin * awachcha-
menj kakkina ejininiwagak.

Kawin kegun nind iji chingenindansin, eji chinge-
nindaman ni matchi ahintowin * kin ondji ka ondjita
onichichin ka ondjita sakihigussin.

Kassihamawichin enabigis * Jezus ot ijinikazowi-
ning ondji.

Nin gi kijenindam kitchi eka minawatch pattatiyan
* witokkawenimin chawenimin ka minawatch nin gat
tissi.

Ket inenimiwanen * mi kakik ke wij tiyan.

Ketchitwawenindagussitch wekussissitch gaye we-
ossitch * gaye wenichichitch Manito.

Epitch kitchitwawenindagussigubanen gayat gaye

nongum, kakik gaye * eapitch eapitch gaye keyatatch,
missa kakik ket ingi.

Kije-Manito ka tibenimin * wabamichin onzam ni
gittimagis.

Kije maneton nim battatowin * ka nitta ichkwakint-
jikatesinon.

Napitch ni segenint mekkawenindaman ka pitch
ahintiyen * onzam nin gi matchi pimatis.

Awesensing nind iji pimatissinaban * Matchi Ma-
nito weossingin nind apittenindagussinaban.

Kwatissiyan wakwing ket inabiyen * kwatissiyan
anichinabek ke witikemagwa.

Anamakkamikong pinawigo nind da ki metis * cha-
wenimissiwabanen.

Enowek keyabatch ki mindjimenim ki minonendji-
ganing * ondjita ni chawenindagus.

Kije-Manito ka tibenimin * songa napitch songa
nind anwenindis.

Gittimagenimichin kin ondjita napitch ka chawenia-
gen * chawenimichin ki kwissis Jezus ot ijinikazowi-
ning.

Kakkina Wakwing endanakiyeg, andjissigabawit-
tawik Kije-Manito. * Songa kitchi gaganottama-
wiyeg.

Tebeniminang ot ikitowin pizindamuk * animatiai
ot animittagussiwin songa pizindamuk.

Pejiko Kije-Manito ondjita ki ga mannadjihha * win
pejiko enigukkutehen ki ga sakiha.

Ka anutch ki ga winassiwa Kije-Manito * ka kegun
gaye anutch ki ga windansin.

Kije-Manito-Kijigak ki ga mannadjilton * mennad-
jitaganiwangin gaye ka ningut ki gat inanokkissi.

Ki nikihigok ki ga mannadjihak * kinoweoj wich
pimatissin ondaje akking.

Ka awia ki ga nissassiwa * ka gaye awia ki ga chingenimassiwa.

Ka memandjich mannatissikken * manatenindamowin gaye atchitch ininan.

Ka awia kimotimiekken * ka kegun awia gaye mindjimenindamawiekken.

Kakik tepwen ningut ekitoyan * ka wikat awia ki ga kinawichkimassiwa.

Ka missawenindanken matchi witikentiwin * mi eta ayamie nipawiwin.

Ka missawenindamawiekken awia kegun endanitjin * kitchi kimotimatch.

Mi ekitogubanen tebeniminang, pamittawatch, kakik ki ga minawanigus * anwettawatch dach, kakik ki ga mokkwakis.

Pizindanda eneniminang * ka kije ayamie ganawabaminang.

Ki gat ayamiha enamensikkaniwangin Kije-Manito-Kijigak * gaye tassin mennadjitaganiwangin.

Wewenint ki ga kopessew kanage ningutin * tassin ka ningut-o-ponagakin.

Ki ga kommuniw * tassin apitchipatjin.

Ki ga mannadjittonan mannadjittaganan * ka igong kitchi mannadjitton.

Ki ga kihiguchchim ni mittana tasso kun ebwa machi apitchipatch * gaye tassin egong kitchi kihiguchchimong.

Ka mitjiken wiyas * tehipayatiko-kijigak ka gaye Mani kijigak.

Kegun nittawigiton * ki gat ayamie pakitiniken endotamowatch eyamiatjik.

Kit anamikkun Mania mwachkineskagoyan onichi-chiwin * ki papaganawenimik mizi ka kijittotch.

Awachchamenj epitch sakihintwa kitchikwek *
awachchamenj ki sakihigo.

Mizi gaye kitchitwawenindagussi * ki kwissis Je-
zus ka inintch.

Napitch ka onichichin Mania * Diu ka okwisissi-
match.

Gaganottamawinam ketako pematissiwangen *
gaye wich nipuyang gaganottamawinam. Katinakis
logi.

Kakkina enichiniwiyeg, kitchitwawinik Kije-Ma-
nito * kitchitwawinik, endassowinzoyeg.

Win ima pejiko, ondjita kitchitwawenindagussi *
win pejiko ondjita ki tibenimigonan.

Tebenimiyang kije gittimagissiwining ki ondji ga-
nonin * chawenindammittan eji pagussenimanan.

Kit awakang ondji chawenindam iji pizindan * ni
pagussenindjikewini animittagussiwin.

Nagatawenindamawatwaban anichinabek o matchi
pimatissiwiniwa * awenin ke kis miko inabaminagus-
sigubanen.

Tebenimiyang kit owiyawinottan chawenindjikewini
* ki tepwewini-animittagussiwin ni song apenimos-
kagon.

Ni tchitchagus ot apenimon Ke.-Mon. ot animitta-
gussiwinini * ni tchitchagus ot apenimon o gittimage-
nindjikewinini.

Wibatch patabangin nananj kitchi tibikak * apeni-
mowata Kije-Maniton o kije chawenindjikewinini.

Napitch chawenindjikewinitch Kije-Manito * ki kis
kitchinatjinehogonan ij awakaninanguban Matchi-
Manito.

Echkam songa pagussenimata Kije-Manito * kitchi
apitchi anguttamonang ki matchi inatissiwininan.



Nin depwettam, ondjita keget manitowi ki tchitchagussinan * ka wikat kata nipussi.

Ki nipong ki ga minonenimigonan Kije-Manito * ka pitch ahintiyang eko pimatissing.

Neputjin awiak kegichkang pattatowinens * kata nakkawe kassibakkizo mi dach Wakwing kitchi ijatoh.

Eka dach kegun kegichkang * tech igutch Wakwing kata minawassi.

Chawenindagussik nakkawe mettizowining ayani-missitjik i gaganottamawintwa * awachchamenj dach ej anamensikkawintwa.

Pon-akkiwang ki gat apitchipamin * o kat otittan ki tchitchagussinan ki yawinan.

Kitchi apitchi ichkwa minoneniminang Jezus Kristus * Wakwing kata ijik meno-ayamatjik.

Onzam itach kata gittimagissik ka nitta pattatitjik * anamakamikong kata mokwakkizok.

Kije-Manito chawenimichin * ganawenimichin apitch ke pon pimatissiyan.

Ni tchitchagussan * o kitchitwawinigon Kije-Manito.

Ni mitonenindjigan gaye modjikenindamomagat * Kije-Manitowiwining ka agwachchimitch.

Anawi ni nakikkawenindagus, kenowek ningi chawenindam-kijikkabamik Ke.-Mo. nin enokkittawak * mi ket ondji kakkina ket ani anichinabewitjik ninguttawassituk nin gat igok.

Win ma mizi ka nittawittotch gaye ka kitchitwawinikazotch * nin gi kitchi mino-totag.

Ondjita gaye nitta chaweninge, o chaweniman gwessigutjin o nidjanissiwani * gaye ot ayanikke o ochissiwani ket ani ayanikke o ochissiwatjin.

Ki mamanda iji kachkitomagatini o nik * o ki saswewebinan sessekawenindaminitjin.

Memandawizinitjin kitchi nakikkawenindagussi-

nitich o kis ineniman * mayanenindagussinitjin dach o kis kitchitwawenindagussihan.

Pekkatenedjin o kis wanatchissinihan * wayanatissinitjin dach o ki gittimagihan.

Wenitjanissingin o kis totawan Israhelan ot ayanikke ochissini * napitch songa gittimagassing o kis ineniman.

Mi ka nigan inawintwabanenak ni michchomissinabanik * Abraham kakkina gaye o nidjanissan ochissan gaye ayanikkatch.

ANWENINDIZO-NIKAMUWIN.

Chawenimichin Kije-manito * chawenimichin kin napitch ka chaweningen.

Kin ondjita napitch ka chaweningen * kassihamawichin ni matchi ahindowin.

Ni matchi ahindowin anyantch kizissibattawichin * kassihamawichin gaye nim battatowin.

Nap-ima nim battatowin ni kikkenindan * ni matchi ahintowin gaye kakik ni wabandan,

Kin nichike ki ki nichikihin, ki kis wabam gaye iki pattatiyan, * manutch enowek chawenimichin.

Kit ikitonaban, ket ayanwenindizodjik nin ga chawenimak * songa nind anwenindis mi ke ondji chewenimin.

Chawenimichin kitchi tepwetagoyan, * ki ga chagotchihak ayanwettokgik.

Gittimagenimichin onzam ma pattatowin ni wiha-kichkagon eko anichinabewiyan nin ga o skatang.

Enowek nin gi pattahintint, ki windamon ni matchi ahindowin * ondjita ma tepwewin ki sakiton.

Keget ondjita nin gi pattahintint * anawi ma wewenint ki kikkinohamawinaban.

Sasswebikahandawichin Tebenimin nin ga wabis * ki ga kizissibach, kwatissitch kon awachamins nin ga wabis.

Windamawiyān ki ga chawenim napitch ta minot-
tamomagaton, nittawakan * nikkānan gaye ta modji-
kenindamomagaton.

Kuchchabandan ni matchi ahindowin * kakkina ni
pattatowinan gaye kassihamawichin.

Andjittawichin nin de kitchi minoteheyan * chawe-
nimichin gaye kitchi nibuakkayan.

Ka win kwangunichiken, * eapitch eapitch ganawa-
bamichin.

Gittimagenimichin, ni matchi ahintowin kizissibat-
tawichin, * songitehechkawichin gweyak kitchi tiyan.

Matchi anichinabek nin ga kikkinohamawak aya-
miewin, * matchi anichinabek ta anwenindizowak.

Kije-Manito ka tibenimin, ni matchi ahintowin kas-
sihamawichin, * nin denan ta modjikenindamomagat ej
ayamihayan.

Kije-Manito ka tibenimin, * tawanonichin, nin don-
dach ki ga kitchitwawinigon.

Sasakiwitjigan mino-enindamanban ki ta ki sassa-
kiwinininaban, * sassakiwitjigan dach ka ki mino-
enindansin.

Mechkut ki pakitinamon nin de, * ka win manenin-
danken nin de, onzam anwenindizomagat.

Cawenim ondaje epitjik, chawenim, * nibuakkam,
Kije-Manito chawenim.

Mi apitch napitch songa nin gat ayamihamin, * mi
apitch mizi-kegun ki ga pakitinamonimin.

NIKAMUWINAN.

1. Wakwing ondjita tebissinaniwan
Ka wikat kegun ta nondessesinon
Kakikke waki dajikenaniwan
Tebissiwining.

2. Wakwing endatjik-mikkawenimatak
 Ayapitch songa pagussenimatak
 Echkam echkam gutch kitchi otissangwa
 Wikotchitota.

3. Wakwing endatjik asso inawatak
 Entiyang nongum mi intwagubanen
 Endowatch nongum mi gweyak ke tiyang
 Wich inawangwa.

4. Kawin awia chawenimossiwitch
 Missawatch napitch metchitwagubanen
 Ondjita keget nitta chaweninge
 Kije-Manito.

5. Tebeniminang ki witokkagonan
 Mi wentji wentak menindagussing
 Ondjita gweyak animat kinawe
 Kiwanissiwin.

6. Nokwenindagwat ni ninjobizowin
 Ni wiwajiwin ka kussikwansinon
 Mi ma ekitotch kaginik ka tepwetch
 Kossinan Jezus.

7. Wakwing tchi ijang kakik nagassita
 Kakkina asso songa nibwakkata
 Kawikat onzam pamenindansita
 Akking endaguk.

8. Ondaje akking kit animissimin
 Matchi Manito ki mikamigonan
 Wakwing dach kakik ki ga nodjimomin
 Wanakkiwining.

9. Ketchitwawisitch kakik weossimintj
 Ketchitwawisitch ka okwisissimintj
 Ketchitwawisitch gaye tetabiskutch
 Mino-Manito.

-
1. Kin mizi ka nittawiton
 Kin mizi ka kihijitton
 Mizi ganawenindaman
 Mizi ka tibenindaman.

-
2. Kin ka ontinawawiyang
 Mizi eji manessiyang
 Kin ka ganawenimiyang
 Kin netta chawenimiyang.

-
3. Kijik ka kijittoyanban
 Gaye tetabiskutch tibik
 Wakwi, akki dach sipiwan
 Ninawent ka y-ojittoyanban.

-
4. Wich kakik minotawiyang
 Mechchagwam ke ganoninang
 Mizi i manessiwangin
 Wich pakitinamawiyang.

-
5. Tayagwatch dach mayanattak
 Ka wij chagotchihigoyang
 Songa kinahamawinam
 Kitchi atchittenindamang.

-
6. Mi keget ke totawiyang
 Diu ka nisso pejikon
 Wekusissin, kin weossin
 Gaye kin Meno-Manito.



1. Ondas ijan ka kijihiyang
Kin Meno-Manitowiyam
Nansikkaw ka kijihatjik
Muchkinataw o tehiwan.

2. Ka chaweningen nanjissen
Otittan dach ni tehinan
Kitchi minawanigoton
Ka nissitamhitotamang.

3. Kakik pintjina tibikat
Endatch ni tchitchaguchinam
Kakik wassenamawinam
Kitchi gweyak-osseyang

4. Ni sekisimin entiyang
Kinipin tchi witchihiyang
Ni wi chagotchiigonan
Manito changenimiyang.

5. Kikkenindamojichchinam
Kin inakkak wekosissitch
Tetabiskutch okwississan
Kakik kitchi tepwettonang.

6. Wekosissitch minomata
Tabiskutch inata weossitch
Gaye ka witch-manitomatch
Pejiko manadjihata.

1. Mani Diu o kin
Kakik gaye pekich
Ka kikangowiyam
Ki minominimin.

2. Kwenatch Mani, Wakwi
 Ka nitta chenaman
 Inenimichinam
 Wakwing tehi ijayang.

3. Ka nodjimohiyang
 Ka mijibiamintch
 Nittam ikwe Eva
 Chawenimichinam.

4. Nin ginan abiskun
 Netta pattatitjik,
 Wassenamaw gaye
 Tebikatisitjik.

5. Miwittawichinam
 Anutch ka yanimak
 Pittawichinam dach
 Mizi wenichiching.

6. Wabandahichinam
 Ej okimik Jezus
 Ki ki nikihaban
 Kitchi agwachchingetch.

7. Ki sakihik Jezus
 Gaye ki pamittag
 Netta chaweningen
 Ayamittawinam.

8. Ka kikangowiyen
 Ka pakinawatwa
 Kakkina kikangwak
 I kijewatissin.

9. Inenimichinam
Tchi pinatissiyang
Kitchi kakik wakwing
Wabamangitch Jezus.

10. Nakkumata Diu
Mizi ka kijittotch
I nisso-pejikotch
Kakik sakihata.

1. Jezus ka yagwachchimiyang
Songa ka sakihigussin
Akki hi wij minawiton
Ki kich owiyawihitis.

2. Epitch songa sakihiyang,
Mittigong ki wij nissigon
Kin gutch ki chagotchihitis
He wij kijikkamawiyang.

3. Anamakkamikong ejan
Ki tabiskunak neputjik
Ki chagotchihak manituk
Ichkuteng endanakitjik.

4. Nayagussin ki segihak
Tech ki miwihak manituk
Ki mamakatenindagus
Wakwing ej ombinitizun.

5. Kakkine ki tibenimak
Anjenik anichinabek
Kos songa ki sakihihitim
O kitchi-niking epiyan.

6. Jezus ka kijewatissin
 Minawanigohichchinam
 Ki skinjik wabandahinan
 Ke ondji minawassiyang.

7. Wakwing ke witikeminang
 Nongum akking ka mawiyang
 Kassipingweochchinam
 Minawanigohichchinam.

1. Mania kwenatch ninginan
 Gaganottamawichinam
 Megwatch ij pimatissiyang
 Gaye wich aninipuyang.

2. Jezus kakik sakihata
 Jezus kakik nakkumata
 Kakik tepahiganata
 Kakik papamittawata.

Pagussanimata Jezus Kwetakitotch.

Kije-Manito,.....	Chawenimichinam.
Jezus-Knist,.....	Chawenimichinam.
Kije-Manito,.....	Chawenimichinam.
Jezus-Knist,.....	Pizindawichinam ;
Jezus-Knist,.....	Chawenindamittawichinam ;
Kije-Manito Wekussissiyang Wakwing epian ;...	Chawenimichinam.
Kije-Manito Weossiyan Ka yagwachchimatwa anichinabek ;.....	Chawenimichinam.
Kije-Manito Ka Mino-manitowiyang ;	Chawenimichinam.
Kije-Manito Ka Nisso-pèjikon ;	
Jezus-Knist, Wakwing ka pi-onjiban hi wi yagwachchimiyan ;	
Jezus-Knist, ka inenindaman, manutch nin ganikihik kitchitwa Mani ka tessanakwewitch ;...	

- Jezus-Knist, awakkaning ka inabaminaaguhiti-
zonyanban epitch sakihyang ;
- Jezus-Knist, ka chingichchimigoyanban awezen-
si-wissiniwaganing ;
- Jezus-Knist, ka yanawenindamawassiwatiban
ayanwenindizogubanen *Madenen* o sipingon ; . .
- Jezus-Knist, ka nanekatehitonyanban ki yow, iki
pakkaten, gaie iki nibakwen ;
- Jezus-Knist, ka wich kagwe-kikkenimikwapan,
gaie ka chabbo-nanekatchihigwa Judawinini-
wak ;
- Jezus-Knist, ka gaganottamawiyang nananj igutch
hi sak' abwezoyan miskwi ;
- Jezus-Knist, ka kis inenimatiban Juda, manutch
nin ga wayejimik, manutch ningat odjimik ; . .
- Jezus-Knist, ka takgunigonyanban, gaie mitchi
ka yappakinikgwapan matchi Judawininiwak ;
- Jezus-Knist, manutch ka inenindamanban ki pik-
kwanang kitchi takkopitek ki nintjin ;
- Jezus-Knist, ka ijiwinigonyanban, gaie ka pinich-
chimigonyanban enassam' apiwatch kitchitepak-
kunike-wininiwak ;
- Jezus-Knist, ka chachikkwingweogonyanban hi
pittikgwakunitjitagonyanban, gaie hi passano-
wehogonyanban ;
- Jezus-Knist, Mizi-mizi ka iji animissiyan ;
- Jezus-Knist, *Pinat* ka pakitinamawintiban ki yow ;
- Jezus-Knist, ka mintchiguppinigonyanban nananj
igutch hi sakiskwakissin ;
- Jezus-Knist, ka agwanahogonyanban chimaga-
nichchak-okima okkwanans epitch papinot-
tokgwa ;
- Jezus-Knist, o mininsakkanjik ka sizokkwebini-
gonyanban ;
- Jezus-Knist, ka nondamanban ij-igon, nissik uis-
sik, tchipayattigong achchittagwauk ;

Chawenimichinam.

Chawenimichinam.

Chawenimichinam.

Jezus-Knist, apitch apitchi pwayanawitton ka kis
wiwajiwihigon tchipayattik apitchi ketchi-kus-
sikwanitch ;

Jezus-Knist, ka ombakunikonyanban tchipayatti-
gong, nissaw ej-apiwatch netta-kimotigubane-
nik ;

Jezus-Knist, ka achit-taguhigatek ki nintjin gaie
kis sitan tchipayattigong, gaie ka matchi-wi-
nikkwa indaje pemusse gubanenik ;

Jezus-Knist, kis skinjikong ka win napitch ki
nissitawinagussissinaban, kakkina kis pakach-
kahigateban kis skinjik, tanassak wemikingin
kit ijinagussinaban ;

Jezus-Knist, ka gaganottamawatwa ka nissikgik
tchipayattigong, gaie ka chawenimatch iki pa-
gussenimik netta-kimottippan ;

Jezus-Knist, ka ganawenindamonatch kitchitwa
Jan kik gan ;

Jezus-Knist, ka pajipahogonyanban chimagan, ka
yagwachehimatwa anichinabek ki miskwiming ;

Jezus-Knist, anamabik ka yassigonyanban ;

Jezus-Knist, ka nissokunagak ka yapitchipahiti-
zoyanban ;

Jezus-Knist, ka ombiwinitizon neu-mittana ka
tasso-kijigak kach apitchipahitizon ;

Jezus-Knist, o kitchiniking kos epian ;

Jezus-Knist, ke pi minonenimatwa pematissitjik
gaie neputjik ;

Jezus-Knist, ka kassihamawatwa payattatitjik ;
Kassihamawichinam.

Jezus-Knist, ka kassihamawatwa payattatitjik,
Chawenindamittawichinam.

Jezus-Knist, ka kassihamawatwa payattatitjik ;
Chawenimichinam.

Jezus-Knist, Pizindawichinam.

Jezus-Knist, Chawenindamittawichinam.

Chawenimichinam.

Chawenimichinam.

Kije-Manito, }
 Jezus-Knist, } Chawenimichinam.
 Kije-Manito, }

Nossinan Wakwing Epiyan, &c.

Syamihata.—Jezus-Knist Tebeningen, ka kis ine mindamanban naning kitchi pajipabogon kitchi ontji agwachchimatwa anichinabek, enabigis, inenimichinam ihm, kitchi ondji kassihamagoyang ni pattatowininanin : chawenimichinam kitchi gweyak tiyan nananj tchi nipuyang, mi dach ki nipuyang kitchi kakik wabaminang ki Manitowinagussiwining.—Ondji tebeningetch Jezus-Knist pematissitch gaie epitch kakikkekamik. Katinakis ingi.

Pagussenimata Kitchitwa Mani.

Kije-Manito,	Chawenimichinam.
Jezus,	Chawenimichinam.
Kije-Manito,	Chawenimichinam.
Jezus,	Pizindawichinam.
Jezus,	Chawenindamittawichinam.
Kije-Manito Wekussissiyen Wakwing Epian, . . .	Chawenimi- chinam.
Kije-Manito Weossiyan ka yagwachchimatwa anichininiwok,	
Kije-Manito ka Mino-manitowiyen,	Gaganottamawinam.
Kije-Manito ka Nisso-pejikon,	
Kitchitwa Mani,	
Kin Kije-Manito ka okwississimatch,	
Kin ka pakinawatwa tessenawitjik,	
Kin ij pejikon ka onitjanissin hi tessenakwewiyen,	
Kin knistus ka okwississimatch,	
Kin ka okwississimatch ka kijihatch anichininiwa,	
Kin ka okwississimatch ka agwachchimatwa anichininiwa,	
Kin ka okwississimatch pimatissiwin ka tibenindang,	

Kitchitwa Mani ninginan,
 Ontjita kwenatch ninginan,
 Ninginan ka kitchitwawenindagussin,
 Ninginan ka makatenimigon,
 Ninginan kakina ka nittawiton,
 Ninginan napitch ka chaweningen,
 Ninginan ka minawassihiyang,
 Mani napitch ka minawinagussin,
 Mani ka sakihigon,
 Mani ka kakittawenindaman,
 Mani ontjita ka nibwakkan,
 Mani kweyak ka iji mitonenindaman,
 Mani songa ka sakihatch Kije-Manito,
 Mani wakwi ka chenamawiyang
 Mani ka wassenamawiyang,
 Mani ka chawenimatwa ayanimissitjik,
 Mani ka gaganottamawatwa payattatitjik,
 Mani ka songitehechkawatwa eyamihatjik,
 Mani ka tibenimatwa Anjeniwak,
 Mani ka tibenimatwa ki michchomissinabanik ka
 ayamiegubanenik,
 Mani ka tibenimatwa ka nigan kikkenindamogu-
 banenik,
 Mani ka tibenimatwa ka papakikkinohamagegu-
 banenik,
 Mani ka tibenimatwa ayamiewin ka ontji nanintjik,
 Mani ka tibenimatwa gweyak-entitjik,
 Mani ka tibenimatwa tessanawitjik,
 Mani ka tibenimatwa kakkina wakwing endatjik,
 Mani nind okimakweminan ondaje endanakiyang,
 Jezus ka kassihamawatwa payattatitjik,
 ka ningut inenindanken ka kis pattatiyang,
 Jezus ka kassihamawatwa payattatitjik, Cha-
 wenindamittawichinam.
 Jezus ka kassihamawatwa payattatitjik, Cha-
 wenimichinam.

Gaganottamawinam.

Gaganottamawinam.

Gaganottamawinam.

Jezus, Pizindawichinam.

Jezus, Chawenindamittawichinam.

Kije-Manito,	}	Chawenimichinam.
Jezus-Knist,		
Kije-Manito,		

W.—Kitchitwa Mani Diu ka okwississimatch gaganottamawinam :

Px.—Wakwing kitchi minawassibiyang Jezus.

Ki songeniminimin kitchitwa Mani Diu Wekussissiyang, ka win anwenimichikangen peguchihinang kwetakitoyang, anutch kegun wich mintjihigoyang, notjimuhichinam kin ka kichewatissin, ka onichichin.

Mania Wakwing ka okimakwewiyan minawassin ; Annenuya.

Chaye apitchipahitizo Jezus ki gwizis, Annenuya.

Mi ekitogubanen he machi nissintch, Annenuya.

Gaganottamawinam, Annenuya, Annenuya, Annenuya, Annenuya.

Ondjita songa sakihata ki ginan Mania,
 Ningut entiangun mikkawenimata,
 Ketako nesseng kitchitwawinata,
 Kitchi sakihinang pon pattatita,
 Kitchi mino-eniminang aya mihata,
 Ningut manesiangun pagussenimata,
 Ka wikat chagwenimassiwata,
 Enigukkuteheng kakik ikitota,
 O Mania O Mania O Mania.
 Eapitch eapitch tibenimichinam.

	<i>A</i>	<i>E</i>	<i>I</i>	<i>O</i>	<i>U</i>
	<i>A</i>	<i>E</i>	<i>I</i>	<i>O</i>	<i>U</i>
<i>ba,</i>	<i>ba</i>	<i>be</i>	<i>bi</i>	<i>bo</i>	<i>bu</i>
<i>pa,</i>	<i>pa</i>	<i>pe</i>	<i>pi</i>	<i>po</i>	<i>pu</i>
<i>da,</i>	<i>da</i>	<i>de</i>	<i>di</i>	<i>do</i>	<i>du</i>
<i>ta,</i>	<i>ta</i>	<i>te</i>	<i>ti</i>	<i>to</i>	<i>tu</i>
<i>ga,</i>	<i>ga</i>	<i>ge</i>	<i>gi</i>	<i>go</i>	<i>gu</i>
<i>ka,</i>	<i>ka</i>	<i>ke</i>	<i>ki</i>	<i>ko</i>	<i>ku</i>
<i>ja,</i>	<i>ja</i>	<i>je</i>	<i>ji</i>	<i>jo</i>	<i>ju</i>
<i>cha,</i>	<i>cha</i>	<i>che</i>	<i>chi</i>	<i>cho</i>	<i>chu</i>
<i>sa,</i>	<i>sa</i>	<i>se</i>	<i>si</i>	<i>so</i>	<i>su</i>
<i>za,</i>	<i>za</i>	<i>ze</i>	<i>zi</i>	<i>zo</i>	<i>zu</i>
<i>ma,</i>	<i>ma</i>	<i>me</i>	<i>mi</i>	<i>mo</i>	<i>mu</i>
<i>na,</i>	<i>na</i>	<i>ne</i>	<i>ni</i>	<i>no</i>	<i>nu</i>
<i>wa,</i>	<i>wa</i>	<i>we</i>	<i>wi</i>	<i>wo</i>	<i>wu</i>
<i>ya,</i>	<i>ya</i>	<i>ye</i>	<i>yi</i>	<i>yo</i>	<i>yu</i>
<i>ha,</i>	<i>ha</i>	<i>he</i>	<i>hi</i>	<i>ho</i>	<i>hu</i>

<i>bwa,</i>	<i>bwa</i>	<i>bwe</i>	<i>bwi</i>	<i>bwo</i>	<i>bwu</i>
<i>pwa,</i>	<i>pwa</i>	<i>pwe</i>	<i>pwi</i>	<i>pwo</i>	<i>pwu</i>
<i>dwa,</i>	<i>dwa</i>	<i>dwe</i>	<i>dwi</i>	<i>dwo</i>	<i>dwu</i>
<i>twa,</i>	<i>twa</i>	<i>twe</i>	<i>twi</i>	<i>two</i>	<i>twu</i>
<i>gwa,</i>	<i>gwa</i>	<i>gwe</i>	<i>gwi</i>	<i>gwo</i>	<i>gwu</i>
<i>kwa,</i>	<i>kwa</i>	<i>kwe</i>	<i>kwi</i>	<i>kwo</i>	<i>kwu</i>
<i>jwa,</i>	<i>jwa</i>	<i>jwe</i>	<i>jwi</i>	<i>jwo</i>	<i>jwu</i>

chwa,	chwa	chwe	chwi	chwo	chwu
swa,	swa	swe	swi	swō	swu
zwa,	zwa	zwe	zwi	zwo	zwu
mwa,	mwa	mwe	mwi	mwo	mwu
nwa,	nwa	nwe	nwi	nwo	nwu
tja,	tja	tje	tji	tjo	tju
tcha,	tcha	tche	tchi	tcho	tchu

	<i>A</i>	<i>E</i>	<i>I</i>	<i>O</i>	<i>U</i>
ab,	ab	eb	ib	ob	ub
ap,	ap	ep	ip	op	up
ad,	ad	ed	id	od	ud
at,	at	et	it	ot	ut
ag,	ag	eg	ig	og	ug
ak,	ak	ek	ik	ok	uk
aj,	aj	ej	ij	oj	uj
ach,	ach	ech	ich	och	uch
as,	as	es	is	os	us
az,	az	ez	iz	oz	uz
am,	am	em	im	om	um
an,	an	en	in	on	un
aw,	aw	ew	iw	ow	uw
ay,	ay	ey	iy	oy	uy

atch, atch etch itch otch utch

atj, atj etj itj otj utj

antch, antch entch intch ontch untch

antj antj entj intj ontj untj

anj, anj enj inj onj unj

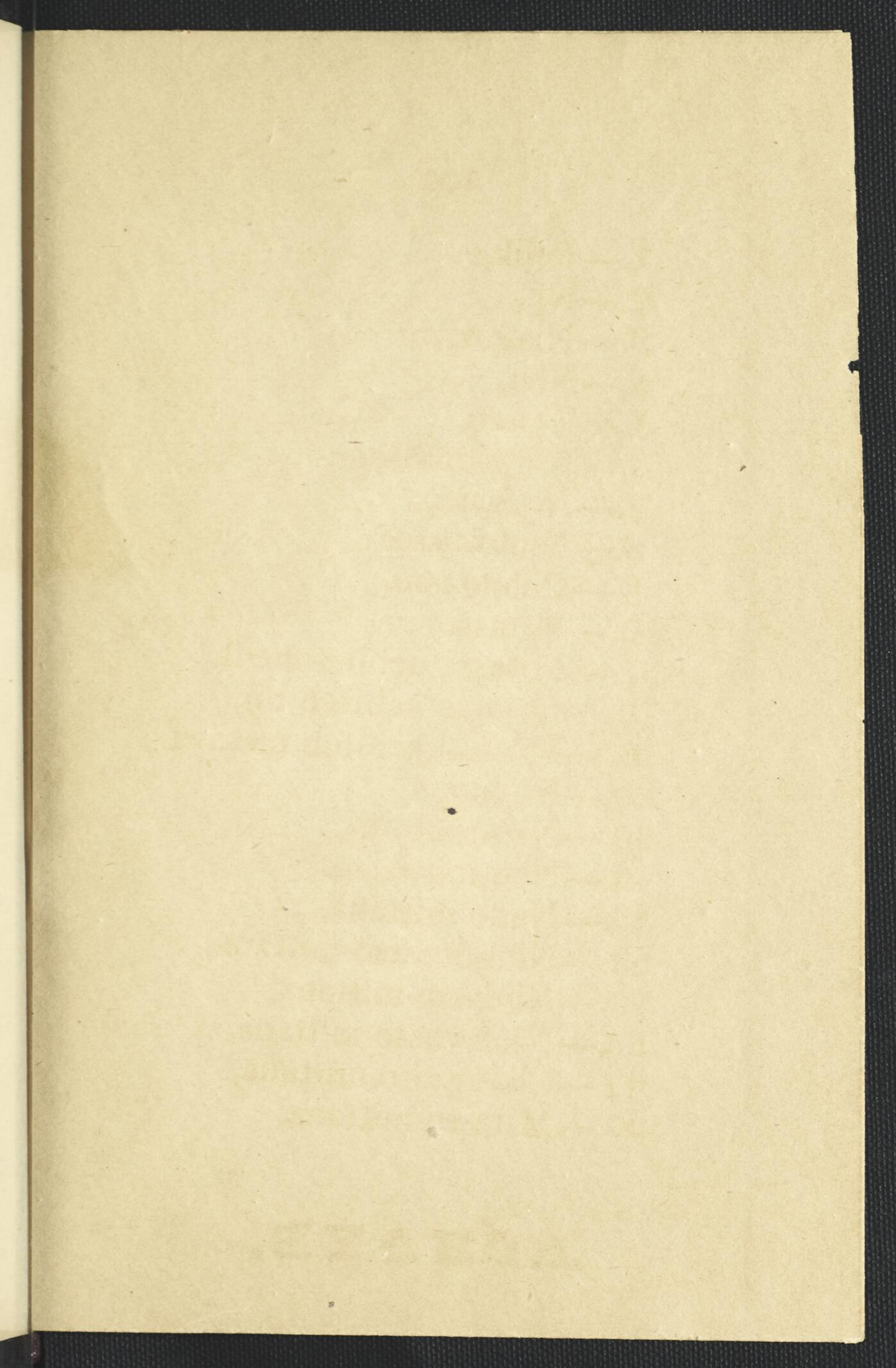
ang, ang eng ing ong ung

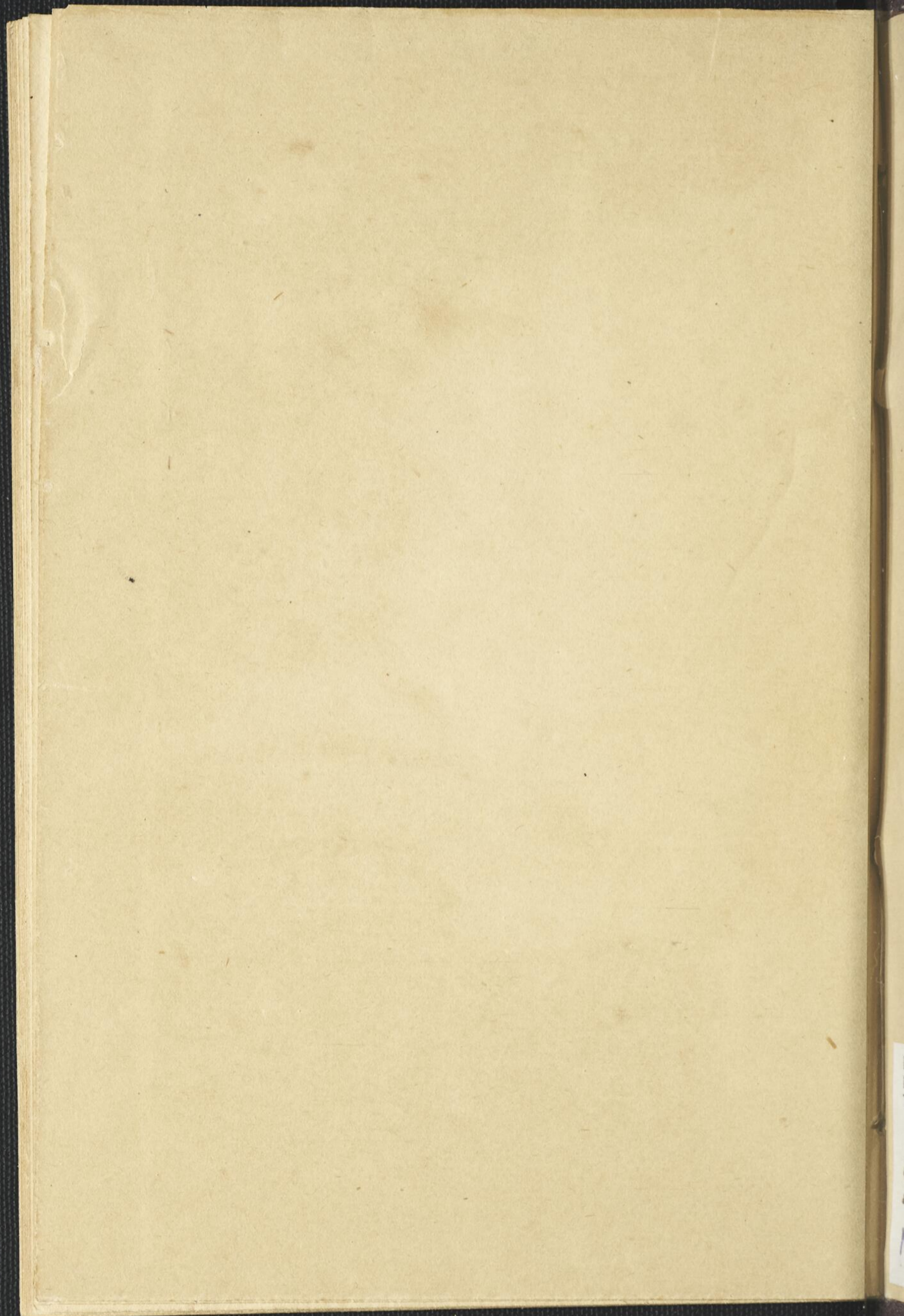
ans, ans, ens ins ons uns

achk, achk echk ichk ochk uchk

- 1.—Pejik,
- 2.—Nij,
- 3.—Nissowi,
- 4.—Neu,
- 5.—Nanan,
- 6.—Ningutoasso,
- 7.—Nijoasso,
- 8.—Nichwasso,
- 9.—Changasso,
- 10.—Mitasso,
- 11.—Mitasso achitch pejik,
- 12.—Mitasso achitch nij,
- 13.—Mitasso achitch nissowi,
- 20.—Nichtana,
- 30.—Nissomittana,
- 40.—Neu-mittana,
- 50.—Nano-mittana,
- 60.—Ningutoasso-mittana,
- 70.—Nijoasso-mittana,
- 80.—Nichwasso-mittana,
- 90.—Changasso-mittana,
- 100.—Mitasso-mittana.

ACHAYE.



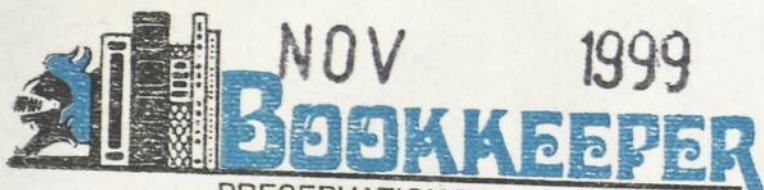


RES

AG

130

Deacidified using the Bookkeeper process.
Neutralizing Agent: Magnesium Oxide
Treatment Date:



NOV 1999

PRESERVATION TECHNOLOGIES, L.P.

111 Thomson Park Drive
Cranberry Township, PA 16066
(724) 779-2111

NS

BNQ



C 000 028 546