

THE SHERBROOKE  
**RECORD**

## **Home Improvement Supplement**

Thursday, November 24, 1977



# FALL HOME IMPROVEMENT

**N**ow is the time for a thorough fall home fix-up!

**I**t's time to plug the leaks, repair the pipes and fill the cracks...

to insulate, investigate and initiate repairs so that Old Man Winter

will find you energy-saving and agony-free!

# Kick 'adhesive habit': use a staple-down vinyl floor!

A lot of people—certainly all true-blue, dyed-in-the-wool, hard-core do-it-yourselfers—know how to install vinyl flooring. You slather adhesive all over the surface you're going to cover, then you lay the new vinyl floor down over top.

Right? Well, that's one way to do it. But now there's a far easier way to install vinyl flooring: staple it.

If you think you didn't read that last sentence right, you did. Because now there's a

remarkable new type of cushioned vinyl floor that you simply staple down. And you only have to staple it at the sides of the room.

(If you're installing this new vinyl floor over concrete, you apply a narrow band of cement at the room edges, instead of stapling. In either case, you no longer need to be bothered with spreading adhesive.)

This new vinyl floor is made differently from all previous vinyl floors, so it performs differently. And it has other advantages, too,

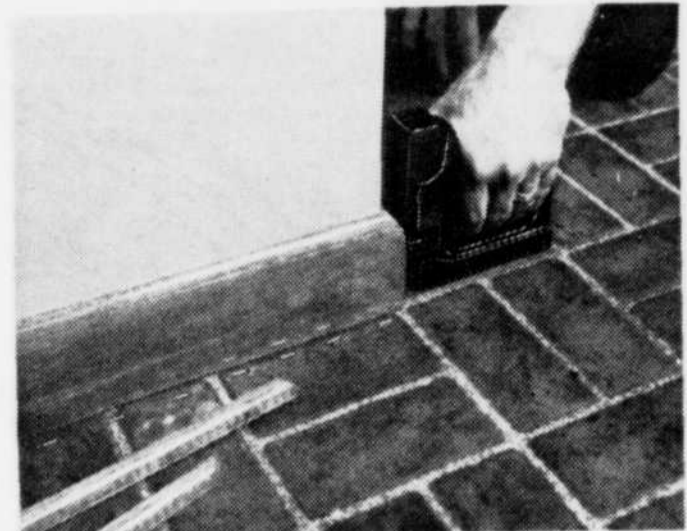
besides the unique way it's installed.

It's an unusually flexible floor, so much so you can fold it like a blanket and tuck it in the back seat of your car to take home from the store. This same flexibility also makes it easier for the amateur to work with—to maneuver, trim and fit. It's not at all stiff or "boardy."

And it's elastic. If the floor is slightly undercut, it can be stretched. It's the first vinyl floor that forgives a do-it-yourselfer's mistakes—up to a point.

Most remarkable of all, this floor has a built-in

"memory" (in the technical sense).



A BRICK FLOOR YOU STAPLE DOWN? Precisely. This remarkable new vinyl floor is fastened down at the sides of the room with heavy-duty staples from a staple gun.



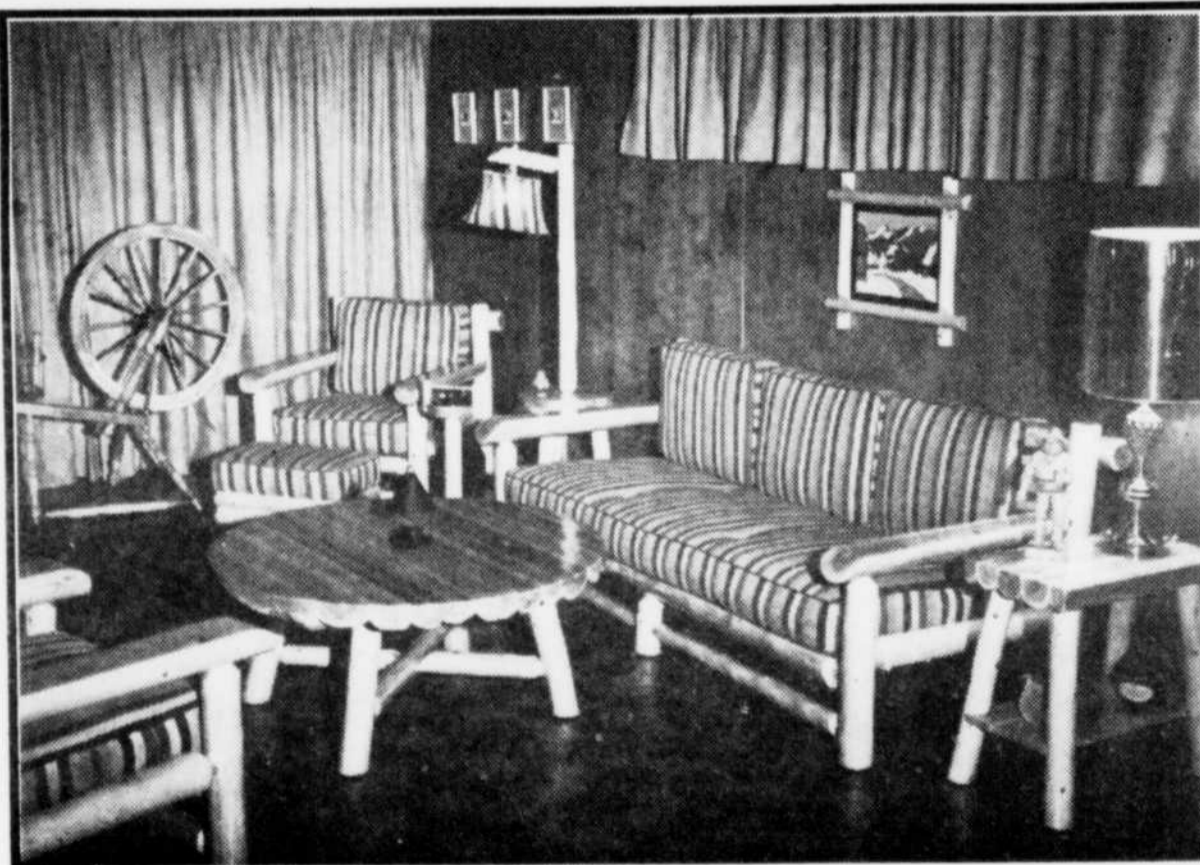
**We Can Help You INSULATE Your Home**



**Bown Lumber Inc.**

BUILDING MATERIALS. INDUSTRIAL SPECIALTIES.

**28 Conley St. - Lennoxville - Tel: 569-9978**



**OPEN ALL YEAR**

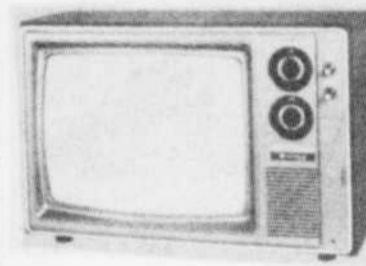
Picture yourself as the gracious hostess in this lovely rustic setting! Whether you're having guests or an intimate meal for two, you will be thrilled by the compliments you will receive. These logs furniture groups are made of carefully selected, beautifully grained white cedar. Finishes are hand rubbed and every detail shows the skill and pride of Canadian finest furniture craftsman. Best of all they are priced for commonsense budgets.

**REGULAR BUSINESS HOURS**

**Rustic Furniture (DEAUVILLE) Inc.**

**FOR INFORMATION CALL TEL: 864-4321**

**V.A. BEAULIEU & FRERES LTD.**



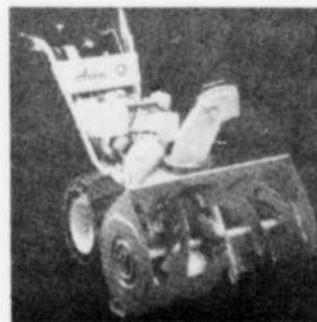
**Visit our Fine Selection of QUASAR Televisions.**

Also our fine selection of bedroom, kitchen and living room furniture & appliances.

2 Floors Of Merchandise

241 King W. - 569-6309

**COATICOOK SPORT INC.**  
849-2910



**ARIENS**

Just like an industrial blower, the ARIENS Snowblower has a two phase system, one system crushes the snow and the other ejects it.

The ARIENS Snowblower comes in 5, 6, 7, 8, 9, 10 h.p. models. Reverse gear and 5 forward speed available on most models.

**FREE STARTER**

Get a free starter when you buy an ARIENS Snowblower at the participating ARIENS dealers. Valid until December 1, 1977.

ARIENS put Old Man Winter right in his place.

For really big snow-throwing jobs, see our line of ARIENS snow-tractors in 10, 12, 14 or 16 h.p. which can be equipped with an ARIENS 48" two phase extra-large Snowblower.

**BIG WORKERS COME IN SMALL PACKAGES**

Functional decorating . . .

## Create useful storage space on your walls



YOU CAN BUILD a modular wall system yourself, if you're handy with tools. Plans for this one are available for 50 cents from Formica Corporation, Cincinnati, Ohio 45202.

Has there ever been a house with "enough" storage space? For most families, with their growing collections of stereo component systems, game boards, house plants, and tennis racquets, the answer is "no"!

Designers at Formica Corporation are urging homeowners and apartment dwellers to look to their underemployed wall areas as one solution to the storage dilemma.

They suggest that instead of seascapes and posters, walls can be decorated with spacious wall/storage systems that integrate functional storage with a practical brand of aesthetics, ideally suited to today's active and casual lifestyle.

The wall/storage units combine the hide-away storage of modular cabinet sections with shelves that double for function or display. And, it is only imagination that restricts the use of this practical new way to gain space and decor in one package.

One of the most practical steps for the family faced with space shortages, the wall/storage unit can provide needed storage for everyone—exhibit space for mom's green thumb collec-

tion and stow-away area for game room paraphernalia.

Whether storage is required in bedroom, basement, or family room, transforming the wasteland of walls into storage is the modern way to go.

For the handyman: A sure-fire remodeling project, wall systems put no king-size dent in the family budget, especially for the do-it-yourselfer with a way with tools.

The grid-like shapes of the contemporary-styled systems make them one of the easier cabinetry projects and one of the most worthwhile.

Complete construction plans for a wall system are available from Formica Corporation. The wall/storage unit is completely clad with its durable decorative laminates and can be built with inexpensive particleboard, gaining its good looks from the more than 100 FORMICA® laminate designs available.

Feeling listless? Out of sorts?  
Fight it! Take a walk.

Walk a Block Today.

**new ideas in  
Wallpaper**

PANELLING — PAINTS

Specialty:

INTERIOR DECORATING

for better buys plus service

**MATERIAUX ORFORD INC.**

888 John St. — MAGOG — 843-5737



**Centre Du  
Tapis  
Couture**

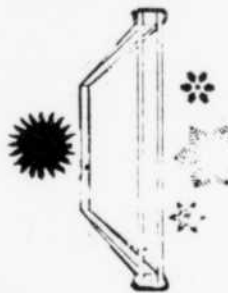
-for all kinds of floors  
-all choices of colours and designs

**118 Wellington S.  
Sherbrooke, Que.  
Tel: 569-1105**

**CANADIAN PITTSBURGH  
INDUSTRIES**

**SHERBROOKE BRANCH**

**TWINDOW®**



Tired of foggy windows, chilly drafts and high heating bills? Install Twindow, double glazed or better still, inquire about our NEW TRIPLED GLAZED WINDOW, windows with built-in insulation. Keeps your home warmer in winter and cooler in summer. 10-YEAR GUARANTEE.

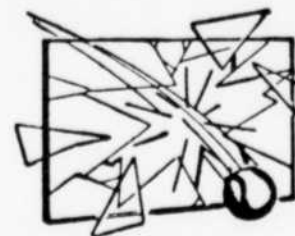
THESE TWINDOWS ARE MANUFACTURED AT OUR MONTREAL FACTORY

...MAXIMUM DELIVERY "10 DAYS"

**WINDOW GLASS**

Replace broken glass for doors or windows  
at

**YOUR GLASS  
REPLACEMENT  
CENTER**



**CPI**

**FOR FURTHER INFORMATION:**

**CANADIAN PITTSBURGH  
INDUSTRIES**

**1581 DENAULT  
TEL: 567-4846**



**DADO, RABBET, LAP, TONGUE AND GROOVE** accurately for 1¢ more. . . . From now until December 31, 1977, dedicated home do-it-yourselfers can purchase the Rockwell 10" Homecraft Saw for its suggested retail price of \$269.99, at participating dealers, then make the additional purchase of the Rockwell Dado Head Set and matching table insert for just one cent more . . . a nearly \$50 savings!

## Penny-a-piece way to perfect sawing

Do-it-yourself home improvement projects are fast becoming a way of life for the majority of homeowners, and with good reason. There is a limited supply of reasonably priced, well-constructed homes available, and it is estimated that over 50% of the existing houses in America are in need of repairs or refurbishing due to age.

Contracting work is becoming increasingly expensive, so the homeowner is being forced into doing more remodeling and repair work on his own.

It used to be that a small corner workbench could accommodate all the needs of the home handy-person.

But with homeowners now tackling major repairs and complicated refurbishings, a simple "drill and hammer" operation will no longer suffice. There comes a time when a substantial portion of the do-it-yourselfers become dissatisfied with their ability, speed and accuracy with portable power tools.

They then turn quite naturally to stationary power tools, which can provide the accuracy and versatility needed for more extensive projects.

For those do-it-yourselfers shopping for stationary power equipment (and dreading the cost!), Rockwell International has come up with a fantastic idea. . . . an old-fashioned 1¢ sale!

Through December 31, 1977, home improvement buffs can purchase, at participating dealers, the popular home workshop size Rockwell 10" Homecraft table saw for the manufac-

turer's suggested retail price of \$269.99, and then receive the dado head set and a dado table insert (which would regularly retail for \$48.47) for just 1¢ more!

That's a savings of nearly \$50.00—something every smart shopper will appreciate!

And the 10" Homecraft table saw is U.L. listed and has long life sealed ball-bearing construction. It can cut wood up to 3-1/4" deep at 90 degrees and up to 2-1/8" at 45 degrees.

The rip capacity is 24" right and left of the blade.

The new self-contained, high-performance, high torque power unit is thermal overload protected, with the drive mechanism and motor fully enclosed for safety.

The 10" Homecraft has a large 32" by 22" work surface, including two heavy duty stamped wings, enabling the home craftsman to rip to the center of 4' by 8' paneling.

All controls are up front for convenience and safety, and they are calibrated for accuracy. The on-off switch can be locked in the off position with an accessory lock (an extra-important feature for homes with children).

The dado head set is used to make stronger joints in casework with professional accuracy. Typical jobs for the dado head set include grooving, tenons, blind dado cuts, rabbeting and splined miter cuts.

The dado table insert, the third item in the 1¢ sale, must be used to replace the regular blade table insert before operating a dado set.

## Good looks should last: shop for investment value in siding

Good looks are often a main criterion for choosing a home siding material, but its long-term ability to resist the elements is also vital.

According to Johns-Manville, a leading residential building products manufacturer, wood, metal and solid vinyl siding all offer beauty when new, but don't equally withstand factors such as harsh weather or fire.

The original appearance of metal siding, for example, can be marred by rust if the protective coating is accidentally scratched or scraped off.

Metal siding is also subject to dents from hail, baseballs and other objects that strike its surface. In addition, tree branches may scratch the metal, causing it to eventually lose its surface treatment.

Wood siding, on the other hand, may rot or fall victim to termites. Untreated wood also provides minimal resistance against fire.

Like metal siding, wood siding will show the harsh effects of age. So, it will require the bothersome task of painting every few years.

For the best investment, says Johns-Manville, homeowners should consider solid vinyl siding. Because its color goes all the way through the vinyl, it won't show scratches. Consequently, painting is never

required to retain its look of newness.

In addition to esthetics, solid vinyl siding resists rust, dents, corrosion and termites. Most important, it won't support combustion.

Because of the durability of solid vinyl siding, Johns-Manville offers a new, 40-year pro-rated limited war-

ranty with its solid vinyl siding line. Since the warranty is transferable, a house sided with J-M siding can mean higher resale value when it is sold.



A HOME OF ANY TRADITIONAL or contemporary architectural style will retain its look of newness with Johns-Manville's solid vinyl siding. It resists scratches and dents, and painting is never required.

## DAVID TAYLOR

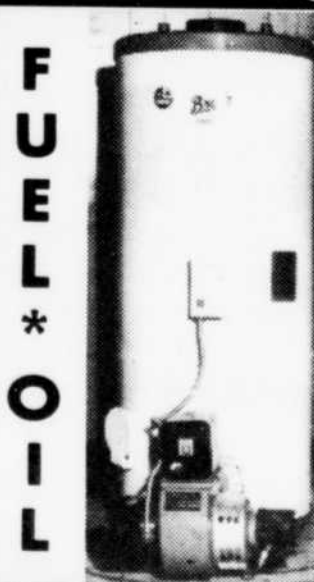
— Sales & Service —



Route 116, Richmond

**826-5101**

## Golden Eagle Canada Ltd.



Home Owners  
RENTALS  
on  
OIL FIRED  
WATER HEATERS  
For Less Than  
Overall Cost &  
Upkeep

## HOME HEAT DIVISIONS

Sherbrooke: M. Kirouac, 567-5251

Windsor: M. Kirouac, 567-5251

Magog: A. Demers, 843-3303

Magog: G. Hurlbut, 843-3540

Magog: R. Veilleux, 843-3356

Check Your Siding

### ALUMINUM VINYL & MASONITE SIDING

- \* Storm Windows and Doors
- \* Shutters-Awnings-Railings

## LENNOXVILLE RENOVATION

81 BAKER ST. — LENNOXVILLE, QUE. TEL: 569-1259

**When YOU  
give to  
RED CROSS  
YOU make  
good things  
happen**

# Beautify backyard with attractive recycled wood



**RECYCLING WOOD**—This homeowner trims a railroad tie with his Mac 110 chain saw during construction of a low-cost, attractive planter box. Utility poles, barn siding and other forms of surplus wood are being used in homes and yards throughout the country.

Wood may be a renewable resource, but that doesn't mean its supply and value are not tied to an economy whose prices continue to rise.

In many areas of the country, homeowners have added wood to the list of commonly recycled products, such as bottles, aluminum cans and paper—but with distinctly more esthetic results.

#### Many uses

Wood used first for construction or utilitarian purposes is increasingly showing up in interior and exterior designs enhancing single family homes, apartment buildings and offices.

Weathered barn siding, for instance, is valued as paneling either inside or outside a structure.

Rapidly gaining popularity in landscape design are the most utilitarian of all wood articles—railroad ties and utility poles.

Heavy, square surplus railroad ties, cut to the proper length, provide the quickest solution to stair-stepping a terraced slope. They are also ideal for construction of large planter boxes, ornamental bridges,

children's sand boxes, and retaining walls.

Round utility poles can be cut into two-inch discs for a walkway or patio floor. In staggered lengths, they make an attractive ornamental fence. Or they may be used to support a patio cover.

The list of possible uses for such "recycled wood" is practically endless.

#### Where to look

Homeowners may inquire about availability and price of such surplus wood at the nearest railroad or utility company office. Transporting and cutting the wood into necessary sizes will be up to the buyer.

The best way to cut heavy wood members is with a lightweight chain saw—a scaled-down version of the saws used to harvest timber, such as one of McCulloch's Mac series of home-use saws.

#### Plenty of power

Weighing about eight and one half pounds, the four Mac saws provide all the woodcutting power a homeowner will need. The Mac 110 is the lowest priced saw in McCulloch history at

\$89.95. Its 1.8 cubic inch gasoline engine and ten-inch bar and chain are augmented by standard equipment features such as an all-position chain brake handguard, muffler shield and automatic plus manual bar and chain oiling.

For greater performance and convenience, the Mac 140 includes McCulloch's Auto Sharp semi-automatic chain sharpening system, a 2.0 cubic inch engine and 14-inch sprocket nose bar and chain for a suggested retail price of \$179.95.

Railroad ties and utility poles, preserved by creosote or other substances, offer a stiff test for any woodcutting tool. Careful attention should be paid to maintaining correctly sharpened cutting chain, following owner's manual instructions.

#### Maintenance

The chain-dulling effects of creosote and other tar-like substances can be at least partially neutralized by adding kerosene to the oil used to lubricate the bar and chain.

All chain saw operators should become familiar with the safety equipment (goggles, hearing protectors, gloves, etc.) and safe handling techniques advised by chain saw manufacturers. Illustrated instructions are included in all McCulloch owner's manuals.

## A roof should offer fire protection, too!

Whether you're building a new home or thinking of re-roofing an existing one, there are some important things you should know about the fire retardant qualities of roofing materials. Why? According to the CertainTeed Home Institute, the roof you select can dramatically reduce vulnerability to fires originating outside your

home.

This includes grass fires, trash fires, embers from your fireplace, and house fires in your neighborhood.

For your own safety and peace of mind, don't even consider a roofing material unless it has a Class "C" fire-resistance rating or better.



**PROPANE GAS  
BOTTLED or BULK**

DOMESTIC—COMMERCIAL—INDUSTRIAL

**2580 King W.—Sherbrooke—569-5117**

*also branches throughout Quebec*

**RE-INSULATE YOUR ATTIC  
AND  
CUT YOUR FUEL BILLS BY  
15% to 20% MINIMUM**

**DO IT YOURSELF**

**RENT OUR "OVERALL" BLOWER  
AND BLOW "CELLULOSE INSULATION"  
AT A LOW LOW PRICE.  
(BLOWER RENTAL AND CELLULOSE AVAILABLE)  
"CELLULOSE" IS C.H.M.C. No. 7861 APPROVED**

**DO IT TODAY and  
SAVE TOMORROW!**

**CHRISTMAS SPECIAL  
SAVE \$20. to DEC. 20th**

For free Estimates call

**FABI RENTAL CENTER INC.  
SHERBROOKE or ROCK FOREST**

569-9641

569-9091

**MEUBLES**

**LOUIS HAMEL INC.**

**Fine Selection Of:**

**Bedroom sets  
Living Room &  
Dining Room  
Furniture**

**52 Principale St. N.  
Richmond  
826-3496**





**GONE ARE THE DAYS** when washers and dryers were confined to the basement as more and more laundry centers are coming into view to double-up with home entertainment and recreation areas. Experts at Speed Queen advise that a good laundering layout can combine well with a number of home activities. For example, in the room shown above, when the washer and dryer are not in use, built-in louvered shutters can be closed to turn the room into a comfortable recreation or meeting room. The sink, installed for convenient hand-washing or rinsing, also serves as a wet-bar with handy storage cabinets when entertaining guests. The mar-resistant table can be utilized during laundering as a folding surface or later as a sewing table, or card and game area for children.

## Plan a multi-purpose laundry work center

Whether or not "it all comes out in the wash" can definitely be influenced by the kind of home laundry equipment you purchase—a decision that should be based on durability, serviceability, energy savings, and cost.

But careful thought and planning in home laundering should not stop there, according to experts at Speed Queen, who stress the importance of developing a convenient laundry center that can serve many functions.

Today, with some 80 per cent of the fabrics in the home machine- or hand-washable, laundry areas are "coming out of the closet" and into prominent view.

A good "washing well" combines functionally with any number of other activities—an entertainment area with a sink and convenient cupboards, or a combination sewing-laundry area.

Fancy or plain, there are a few essential ingredients for planning efficient laundering facilities. Following are some basic "laundry laws" from Speed Queen to keep in mind:

- Install your washer and dryer in the area of your home that will require the least amount of traipsing back and forth—keeping in mind locations of existing plumbing, electrical and gas connections and dryer venting.

### Dishwashers now add to the decor!

Now you can use your dishwasher for flexibility in matching almost any kitchen decor.

Hotpoint has a new model that has three reversible door panels in The New Naturals™ colors: Coffee, Fresh Avocado, Snow, Harvest Wheat, and Almond.

The sixth decorator panel is already prime-coated so

- Lighten laundry chores by installing an easy-to-clean work surface for sorting and folding.

A conveniently-located table could double as a sewing center that includes a machine, and space for laying out and cutting fabric.

- Choose stain- and mar-resistant counter tops, installing them at a comfortable level geared to your own height.

Wall paint, paper, and flooring or carpeting that are easy to clean will all pay easy-care dividends for laundry and play time.

- Allow room for several containers for soiled clothes, sorting each type appropriately, so later re-sorting won't be necessary before washing. Speed Queen washers provide complete automatic wash cycle controls for all types of fabrics from delicate to permanent press.

- Install adequate glare-free lighting or plan your laundry area around a window with natural sunlight to make it easier to check clothes for soil, stains or small mending to-do's.

Whether you're planning a new home, remodeling or producing the most workable solution to available space, keep in mind these tips from Speed Queen—the home laundry specialist.

that it can be painted to match other accessories in the kitchen, or can be covered with contact paper, wallpaper, or anything else to suit decorator desires.

Additional options for decorating are to remove all three door panels and insert a one-quarter-inch wood panel to match kitchen cabinetry.

## For best performance, select the right tools for your project

While there are many decisions facing the home handy-person before tackling a project, probably the most important step of all, according to the Hand Tools Institute (HTI), is selecting the right tool for the job.

HTI points out that many do-it-yourselfers not only are unaware of the numerous jobs that can be performed by struck or hammered tools, but they are oblivious to the dangers of using the wrong tool for the job. This same unawareness also deprives the user of the satisfaction of doing a better, easier job with the correct tool.

Struck or hammered tools, including chisels, punches, star drills, and wedges, can perform a variety of chores such as cutting brick, chiseling wood, chipping mortar, punching holes, splitting wood, drilling masonry holes or shearing rivets and bolts. However, each struck tool performs a specific job and must be used for that task only. To help the beginner in assembling a starter set of struck tools, HTI offers these suggestions for selection and safer use:

1. A set of two cold chisels (3/8" and 3/4")—Cold chisels are used for cutting, shaping

and removing metal softer than the cutting edge itself, such as cast iron, wrought iron, steel, bronze, copper, etc. Never use on stone or concrete. Size is important: Cutting edge should be twice the diameter of bolt being cut. For a more advanced set acquire 1/2" and 1" sizes.

2. Punch Set (3)—Punches are used to mark and punch holes in metal and other material softer than the punch end. Also for driving and removing pins, rivets and aligning holes in different sections of materials. Recommend center, prick and solid punch for starter and later advancing to backing out, pin, and drift punches, and a rivet buster.

3. Star Drill Set (2)—Used for drilling holes in masonry (stone, concrete, brick, etc.). For a start recommend at least two sizes—1/2" and 1".

Should be struck with a hand drilling hammer or small sledge and rotated after each blow. Never strike with a common nail hammer.

4. All-Steel Wood Chisels (2)—Used for rough heavy-duty wood cutting—as opposed to lighter work of regular woodworker's chisels. Not to be used on metal.

Recommend at least two sizes—1/2" and 1" for a basic set and filling in later with ad-

ditional sizes.

5. Wedge (5 pound)—Used for splitting logs, firewood, kindling, staves, etc. Must be struck with sledge or wood-chipper's maul with a larger striking face than the wedge. Never use an axe as a substitute for a wedge.

6. Nail Sets—Used to countersink nails so that nail hole can then be filled with putty, plastic wood or other filling material resulting in a smooth surface.

ONE RATE AND  
ONE RATE ONLY

DAY & NIGHT  
TEL: 569-9667

MAINTENANCE and REPAIR SERVICE  
INC.

\*Plumbing

\*Oil Burners

\*Heating

336 Ball St. — Sherbrooke, P. Que.

Add an organ or a piano to your home...

MAURICE **St-Pierre** LTEE

ORGAN CENTRE

Featuring **Baldwin**  
PIANOS & ORGANS

Combining Quality and  
Fine Craftsmanship For 115 Years



Music School  
Sales - Rentals

Repairs

Exchanges

Leslie Speakers

Sheet Music

Bank Payment Plan

TEL. 563-4411

900 — 13th Ave. N. (Galeries Quatre-Saisons)  
Sherbrooke



**TAPIS  
VN INC.**

TAPIS VAPO-NET ENR.

**SALE  
CARPETS  
TILES  
LINOLEUM**



BERTRAND  
BERGERON,  
prés.

**CARPETS  
STEAM CLEANED**  
FURNITURE REUPHOLSTERED  
GUARANTEED WORKMANSHIP

**RENTAL**

carpet steam cleaners  
(Professional style)

**FLEURIMONT  
563-4736  
1495 King East**

# Video recorders expected to surpass the color TV boom

The home video cassette recorder market, a promising new business, is expected to reach the \$1 billion sales level within three years.

As color TV moved to the saturation point in recent years, manufacturers of consumer electronic products turned their attention to the development of home video recording devices as its successor. Some industry executives are predicting the home video recording systems, now emerging from the wings in time for the big Christmas selling season, eventually will take over from color TV and surpass its sales.

The video cassette recorder will be introduced to Canadian retailers in November.

Mr. Pollack, the RCA executive in the U.S., is hoping the suggested retail price of \$1,000 in the U.S. will put "the electronics industry's first four-hour video cassette recorder - player" ahead of the field.

The video cassette recorder attaches to any brand of TV set and allows the user to record up to four hours of TV in color for viewing at a later time. By using the built-in electronic digital clock-timer, programs can be recorded automatically if the viewer is away from home. The unit also will record the program being viewed or another program on a different channel at the same time.

Following the introduction of consumer VCR instruments that were capable of one-hour recording, later increased to two-hour capability, RCA earlier this year selected the new four-hour VCR system — designated VHS—

which is supplied to RCA by Matsushita Electric Industrial Company of Japan.

Optional accessories with the RCA unit include a choice of two black-and-white TV cameras with built-in microphone for "instant home movies", a microphone and two cassettes with up to two or four-hour recording capacity.

The ability to schedule TV programs according to the consumer's preference is only part of what makes the new recording device so exciting. "The optional camera gives every consumer the option of being his own TV producer, director, writer, camera man and star. You'll have up to four hours on each cassette to record that first birthday, Grandma's visit or your own insufferable Humphrey Bogart imitation," a brochure explains.

It claims the technique is a lot simpler than for any home movie of the past. "Just point the camera and press the trigger. The built-in mike handles the sound. And there's no special lighting needed. You can see what you're recording while you record it just by glancing at the TV screen. If you need 'take two', erase and try again. And there's no processing. Your show is ready for watching the moment you put down the camera."

There is also an optional auxiliary microphone for dubbing in sound — voice, music, sound effects— on a previously recorded cassette. The microphone, which could be part of a component audio system, erases the previous sound track.

RCA predicts the VCR will launch "a significant new in-

dustry that includes cameras for instant home movies and an expected growing availability of new programming material via pre-recorded cassettes that will either be sold or rented by new firms entering the business."

Jack Sauter, division vice-president, marketing, for RCA in the U.S., says the pricing level of the new video cassette recorder was clearly influenced by "our determination to make the potential of the VCR market a reality. We recognize where the major volume segment of the business will be, and our aim is to reach that segment as quickly as possible."

He notes that RCA's past experience in both black-and-white and color TV clearly demonstrated the market broadening value of reaching pricing levels that are more attractive to the consumer.

To indicate the explosive growth of the VCR market, it is predicted 250,000 instruments will be sold by the industry this year with sales rising to 750,000 in 1978 and well over a million units the following year. It was in 1964, 10 years following the introduction of color TV, that the industry achieved sales of one million receivers, it is pointed out.



gc

GASTON CÔTÉ INC.

Lumber and Building Supplies

NOW'S THE TIME TO PREPARE  
YOUR HOUSE FOR WINTER  
VISIT OUR STORE

VISIT OUR STORE

Everything under  
one roof—  
For Construction  
and Renovation

1000 GALT E.  
SHERBROOKE,  
QUE.  
TEL.  
(819) 569-9841

## Safety guidelines for striking struck tools

Here are some safety guidelines offered by the striking and struck tool manufacturers of the Hand Tools Institute:

Avoid glancing blows. Strike blows squarely. Never use a common nail

hammer to strike hardened masonry nails, chisels, or other hardened metal objects.

Never use one hammer to strike another.

Regularly inspect your hammer before each use.



MANUFACTURERS OF DOORS  
AND PANORAMIC WINDOWS

ST. FRANCOIS-XAVIER DE BROMPTON

Tel. WINDSOR:

845-2731

THE NEW ELECTRONIC WONDER  
"VIDEO-CASSETTE" recorders  
from  
**ZENITH**  
ON DISPLAY  
NOV. 25th

ZENITH offers 2 hours of recordings.

Record your favorite television programs in COLOUR while you're out or watch one channel and record on another.

- \* Tapes can be erased and re-used.
- \* Camera option available + Adapts to all televisions.

BUY FROM THE SPECIALISTS...  
WHO KEEP AFIELD OF NEW PRODUCTS.

**VIDEOTECH INC.** 910 KING WEST

Something Cleopatra would have envied . . .

## Give your home the royal touch with a regally remodeled bath

If Cleopatra were around today, what a luxurious time she could have!

The famous Egyptian "bathing queen" could now indulge her tastes in an exquisite and almost endless choice of bathtubs into which she could pour her precious oils—luxury length models geared to comfort (with lots of room for floating lilies!), huge ovals with dual faucets and water controls, fittings of shining chrome or gilt, and enamels in every color her royal highness could imagine.

### Modern luxury

The bathtub and all its surrounding fixtures have come a long way in just the past few decades, and we should take a moment to admire this advancement and think about how we can now enrich our own lives with elegant bathing accommodations.

### Royal range

Fantastic color schemes and striking designs are by no means a Pharaoh's privilege! Bathtubs are now available in styles, sizes, and colors to meet almost every building or remodeling plan. The Kohler Company, for example, now offers bathtubs in 18 styles and 14 sizes, some of these models available in as many as 14 color choices.

### Bathe au naturel!

Devoted to the natural look? Why not remodel in the Desert Spring Collection? Kohler's bathroom fixtures in Espresso, a deep, rich brown, will let you build your own "back to the earth" bathing environment with streamlined features that blend well with Indian rugs, potted plants and earthenware.

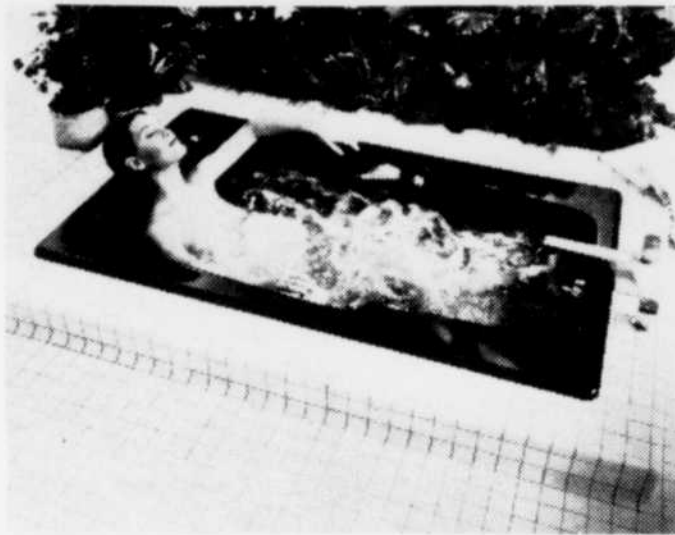
### Colonial charm

Early American devotees will be delighted to know that they can now bring all the warmth and charm of the Colonial period right into the bathroom with Kohler's Colonial Interlude—pure Americana, pure grace.

### Footed tub

The Birthday Bath, an enameled cast iron bathtub that's a full 6' long and 37½" wide, is as deep and comfortable as it is pretty, with antique style faucets and classic ball-and-claw feet.

Add a Boston rocker,



**SURPASS CLEOPATRA IN BATHING LUXURY** with a fantastic new Steeping Bath Whirlpool from the Kohler Company—an indulgence that the Egyptian queen never dreamed of and one that won't cost you a king's ransom! Fashioned in durable enameled cast iron, the Steeping Bath offers: deep-down soaking comfort with its 20" depth, 36" width, and 5' length; four adjustable whirlpool jets to soothe and relax, and built-in safety grip handles for attractive practicality. Steeping Bath Whirlpool is available in 14 striking colors. Why not pamper yourself with a luxury that even the most regal of bathing beauties could not attain?

some Colonial design wallpaper, a hooked rug, and your bathroom will give you the warmest welcome in the

whole house!

### Palace pleasure

Or combine one of the large oval tubs with elegant

fittings in 14 karat gold electroplate, then add mirrors, marble, and crystal everywhere for a bath that Marie Antoinette would have envied!

Soak up fantasy  
With the wide variety of

comfortable, ultra-modern fixtures and fittings Kohler has to offer, all you need to do is let your imagination fly and you'll be well on your way to remodeling your bath into your own dream-come-true.



New...

### Central Cleaning

3 types of vacuums

Sales & Service

### MOTO-ROTATIVE BRUSH CARPET SWEEPER

Your present Filter Queen as well as all types of vacuums can be modified to utilize this attachment.

Sales — Service — Repairs

Filter Queen  
Distributor

### VACUUM CENTER

875 King St. W. — 569-4808

Hoover  
Distributor

FREEZE WINTER OUT WITH

## Electric HEAT

### CHAREST ELECTRIC LTEE.

9 Wellington St. — Tel: 849-2706  
COATICOOK

## Let the Sun Shine In!

Conserving energy needn't mean sacrificing the things you like best about your home — such as lots of window area to let in sunlight and fresh air.

Misleading theories to the contrary, the Federal Energy Administration points out that houses with large windows don't necessarily use more energy than those with small windows. In fact, "properly designed, located and used, windows can actually reduce heating and air conditioning costs."

An FEA brochure notes, for example: "In winter, windows can capture the sun's warmth while providing barriers to heat loss. In milder weather, natural air flow through windows permits a comfortable indoor climate . . . and can eliminate the need for mechanical cooling."

But a window's performance as an energy saver,

says FEA, depends on its "insulative value." The sash and frame material as well as the glass must retard heat loss in winter and heat gain in summer, and air infiltration around the units must be minimized.

Quality wood windows with insulating glass and factory-applied weatherstripping meet these qualifications, and are extremely energy efficient.



## Le Jardinier Amateur

Prop.: Diane & Claudette Gagné

Bulbs, fertilizers,  
potting soil, seeds  
HOUSE PLANTS

Everything for your garden or greenhouse.

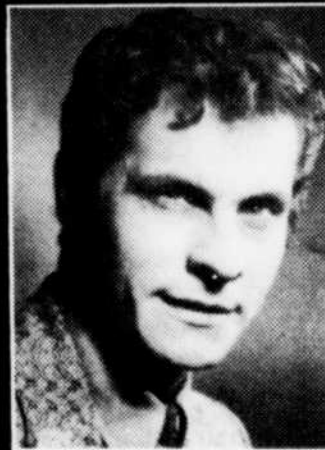
569-0377

King Shopping Center

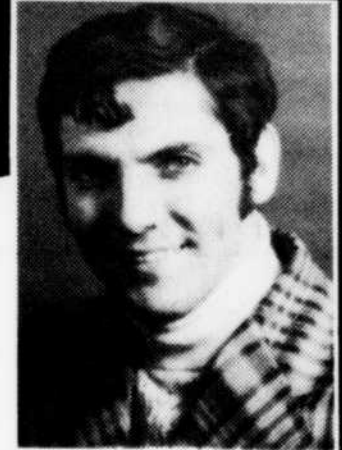
(next to Dominion)

## J.M. GREGOIRE ENRG.

AT YOUR SERVICE



Jacques Grégoire



Michel Grégoire

Remember, we're at your service even during the construction holidays.

**Modular kitchens:**  
stainless steel sinks,  
disposals, compactors,  
range hoods, and  
accessories.

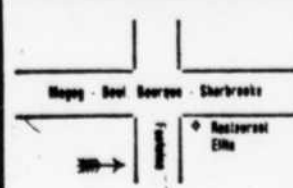
**Imported Bathroom Fixtures**  
Crane & American Standards  
fixtures, medicine cabinets,  
vanities, faucets by Moen,  
Wallaceburg, Cuthbert and Delta.

**Bathrooms:**

- Pumps for artesian wells
- Baseboard heaters
- Prefabricated chimneys
- Franklin Stoves
- Wisper Cool ventilators

Monday, Tuesday, Wednesday  
8:30-5:30  
Thursday, Friday  
8:30-9:00 p.m.  
Saturdays 8:30-5:00

4135 Fontaine St. - Rock Forest - Tel: 569-9673



## Utilities Urge All To Cut Fuel Waste

The heating and cooling system a homeowner chooses often depends on climate, availability of fuels, and present and projected energy costs. But whether the choice is electricity, oil or natural gas, the owner's best assurance of long-term comfort and reasonable fuel bills is an energy-efficient home.

The Edison Electric Institute notes, for example, that electric heating continues to be popular throughout the country. Today, there are more than 10 million electrically-heated dwellings compared with only 610,000 just 15 years ago. In new construction, electric-heat installations account for more than 50 percent.

To these homeowners — and to those using other types of fuel as well — EEI is sending the same message: "Conserve energy and cut waste. It's the best way to reduce the national drain on fossil fuels and help keep homeowners' energy bills as low as possible."

A basic step is proper home insulation. In recognition of this, insulation requirements have been increased for FHA-insured housing and tax credits for insulation improvements are being considered. Some housing experts are suggesting a substantial increase in the insulation levels previously considered adequate for the ceilings and walls of most homes.

The use of thermally-efficient building materials is also essential. Weather-stripped wood windows with insulating glass or storm sash are an example.

In electrically-heated homes where full thermal insulation is a construction requirement, specifications state that sash and frame materials should provide "no continuous metallic path from

the inside of the structure to the outside air." Double glazing and tight weatherstripping are also recommended. In all, the windows should have a high degree of resistance to heat flow.

In insulating parlance, the resistance to heat flow is expressed in R-values. The higher the R-value, the better the insulation.

For instance, wood sash has an R-value of 2.57; insulating glass with a quarter-inch space between the panes — 1.64; single glazing — 0.89. Aluminum sash, without a specific thermal barrier, has an R-value of only 0.85.

The thermal advantages of quality-engineered wood windows accrue from wood's natural insulation, from factory-applied weatherstripping which prevents air seepage, and from the availability of insulating glass in all stock window sizes and styles. Since ample window areas provide much needed light, air and views of the outside, the use of proper windows is essential to cutting fuel bills.

Wood windows in stock sizes and a variety of styles are available at window distributors or local lumber dealers or building supply stores.

Other ways to cut fuel waste, says EEI:

- Close dampers when fireplace is not in use.
- Close heating vents and radiator valves in unused rooms.
- Don't leave garage door open.
- Locate window air conditioners on north or shady side.
- Use window ventilation instead of mechanical cooling.
- Don't put heat-producing lamps or TV beneath wall thermostats of central cooling systems.

## Time-savers to help working homemaker

Almost half the women in the United States have jobs outside the home and each year more and more women go out to work.

If you're a working woman who finds household chores taking up too much of your time, there is a more practical solution to your problem than hiring an upstairs maid, a wardrobe mistress and a cook: it's organization.

### Delegate!

Here are some time-saving tips that can help you shorten the hours spent on house-keeping:

1.) Count on your family to help around the house. Keep a list of duties for them on a bulletin board in the kitchen where it's an easy reminder.

A youngster can be responsible for picking up his toys; older children can be in charge of their rooms and also take turns setting and clearing the dinner table.

Husbands can pick up and drop off drycleaning on their way home from work and help with other chores, too.

### Efficient cuisine

2.) Plan ahead: decide on menus for an entire week and then buy all your groceries at once. Shop on a weekday night, when the stores are less crowded, and take your older children along to help.

When you do cook, prepare foods in large quantities: many soups, stews and casseroles can be stored in the refrigerator or freezer and warmed for quick, nutritious meals—even by your "all thumbs" teenager.

### Stitch in time

3.) Don't turn little jobs into big ones. Fingerprint smudges and dirty spots are often cleaned more easily if you wipe them right away.

For quick, effective clean-ups, use Glass\*Plus® glass, appliance, and cabinet cleaner in every room of the house. Just spray this versatile cleaner on all washable surfaces—windows, mirrors, chrome, countertops, plastic lamps and tables, appliances—and wipe with a clean cloth or damp sponge.

## Get your home 'decked out' for easy, fun living

If your home has some available land, consider getting it "all decked out" for sun, fun, and easy outdoor living. Deck installation, a relatively modest investment that can often be handled by do-it-yourselfers, pays handsome dividends in added living space, exterior beauty, and increased home value.

Consider the benefits of a multi-use wood deck. It can be an outdoor playroom for the youngsters, the family's fresh-air "rec and reading room," an alfresco dining area, and a perfect place for partying—from casual afternoon barbecues to elegant evening entertaining.

A deck of western wood—properly installed and with necessary drainage—can be expected to last a long time. Sections of the deck that come into direct contact with the ground, such as support posts, should be preservative-treated. The remainder of a wood deck requires no special treatment. It can be stained or painted to choice, or simply left to weather naturally. The only maintenance needed is an occasional sweeping or hosing down.

When planning a deck, keep these things in mind. Deck scale and design should reflect the size and style of the house and be compatible with the site. Privacy is easily

provided with fencing or opaque screens.

Wood trellises offer shade without blocking air flow.

Slight spacing between floor boards allows both ventilation and rain run-off.

Flowers and shrubs in built-in planters, hanging baskets or tubs are a colorful

counterpoint to a wood deck's natural outdoor look.

The range of wood deck designs is almost limitless, and the more intricate may require help from a landscape architect or builder. Local lumber dealers are a good source of information on installation and the western species of wood to use.



Don't take a chance on running out of OIL

Let us install ELECTRIC HEATING for you

**BEAUDRY ELECTRIQUE LTEE.**

Specialist

920 Jacques Cartier N. — Sherbrooke

Dial: 567-7005

## MATERIAUX DE CONSTRUCTION LETOURNEAU INC.

François Letourneau, Prop.  
Tel: 567-9613

**SPECIAL**

**Masonite Clapboard**

12" x 16' No. 2

**\$425<sup>00</sup> M.**

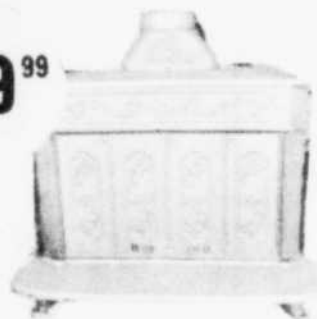
**FRANKLIN**

**PARLOR STOVE**

**149<sup>99</sup>**

100% Cast Iron

**149<sup>99</sup>**



FRANKLIN STOVE 26"

Heavy gauge cast iron "SUN" design. Including spark guard, grate and damper. Super Value.



PARLOR STOVE

Cast iron and chrome accessories. This beauty from by-gone years, its all cast iron traditional styling affords not only nostalgic decor but also warm radiant efficiency. Base grate included.

**Paneling \$4<sup>25</sup> and up**

**Sico Paint**

**WE ALSO CARRY PAINTS**

**Interior Flat Latex \$9<sup>49</sup>**



**Interior Alkid Semi-Gloss \$9<sup>99</sup>**

**Route 143**

**Stanstead Highway**

**Earlstov**

## Best way to energy-saving wall insulation

Energy is fast becoming a scarce and expensive resource. And people are becoming more and more aware of the need to conserve.

But perhaps one of the largest areas of energy waste is being ignored. The walls of most private homes have little or no insulation, even though they represent an opportunity for significant energy savings.

Certainly, a wall is one of the more difficult areas in your home to insulate. It is relatively easy to add insulation in the attic, or beneath the house in the crawlspace or basement. You can't take the same approach with a wall.

There are two ways to insulate a wall. One is to blow insulation into the wall cavity. But this means drilling holes through the outside wall of your home, which later must be patched to match the exterior finish.

Also, the insulation often doesn't fill the wall completely, because of obstructions in the internal framework. And many insulating materials will settle in the wall cavity, which reduces their insulating value.

Finally, this method doesn't insulate the entire wall since there is no insulation over the studs.

The other alternative is to apply an insulating layer to the outside of a house, then cover it with siding.

But what materials should be used for the job?

First off, standard insulation, such as fiberglass batting, won't work because of space limitations. If it's applied to the wall, then compressed by the siding, it loses nearly all of its insulating value. Also, it may trap moisture.

Many contractors are turning to an insulation board of one form or another.

These materials, usually one-half inch thick or greater, provide the same insulation value as a much thicker layer of standard insulation, depending on the composition of the board.

A new aluminum foil-covered insulating board sold by Reynolds Metals Company, called Climate Guard, can reduce heat loss through uninsulated walls by as much as 59 per cent, depending upon the type of siding installed over it. And since the

board is lightweight and easy to apply, labor costs are low.

Which brings you to the next decision—what should you cover the insulation with? Of all the available types of siding, aluminum siding is the most preferred material, at least judging from historical sales.

It has been on the market for almost 40 years and covers more than 10 million houses in the United States. Today, six times as much aluminum siding is sold as compared to any other material.

Aluminum is the lightest of any of the metal siding materials, which makes it easier to install, cutting labor costs. It comes in a wide range of colors and styles, and reduces maintenance by eliminating the need for constant repainting.

Depending on the individual product, it carries a



**INSULATING YOUR WALLS** is an important energy saving project. Accomplishing this with insulating board and siding has many advantages over having insulation blown into the walls.

limited warranty up to 40 years. Specimen warranty certificates are available through individual dealers.

Also, the siding will not rust, an important consideration in many areas; and soffits, shutters and downspouts made of aluminum can be color coordinated to add character to a home.

Steel siding, slightly more expensive than aluminum, is also available in a wide range of colors and styles. Because of its heavier weight, steel also costs more for installation. The main drawback to steel is its susceptibility to red rust.

Vinyl plastic siding is used for conventional residing work, but in some cases, its application over plastic foam insulation board is prohibited. Traditionally it's only been available in white and pastel colors, and in limited styles.

Since vinyl's expansion/contraction ratio under temperature change is higher than any other conventional siding material, it has to be installed more carefully; and vinyl, like most plastics, is susceptible to brittleness in cold temperatures and after prolonged exposure to sunlight.

Also, vinyl plastic can burn.

Regardless, the first thing to do when choosing siding is to ignore the rumors you've heard.

Many people think that metal siding will attract lightning, for example. Not true. Lightning has no preference for any material. The determining factor is height.

The tallest object in an area will attract lightning, regardless of composition. If this weren't the case, lightning would never strike trees.

Another false rumor about metal siding concerns TV and radio reception, probably started when someone noticed their car radio fading when passing over a bridge with a metal framework. According to independent laboratory experiments, metal siding causes less TV

interference than leaves on surrounding trees.

Interference essentially is a function of mass, and it's ridiculous to compare the amount of aluminum or steel used in a siding job with the thousands of tons of steel needed to build a bridge.

In choosing a siding material, also think in terms of maintenance savings—it will make a big difference in your budget. Aluminum siding is the easiest to maintain.

And when you remember that most houses have to be repainted every five years, the longer your siding job

remains intact, the more money you save. That's something most people don't realize.

Assuming professional painting on a five year cycle, in most cases insulated aluminum siding can pay for itself in less than 10 years

through savings in maintenance, painting and energy. So think about insulating your walls with siding. It can be a way to cut increasingly expensive fuel bills—and through maintenance savings, can make life a lot easier.

Redecorate on those cold weekends, come see us for:

**PREFINISHED PANELING;**  
limited selection  
only: **\$5.95**

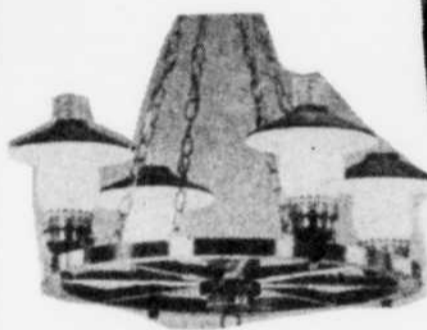
**Carpet  
Specials**

-cut pieces available-



**Light  
Fixtures**

Discontinued  
models  
marked down!



**LENNOXVILLE  
BUILDING SUPPLIES**

147 Queen St. - Lennoxville  
Tel: 567-4874 or 567-4875

**Under New Administration**

**"For All Your Renovation & Building Needs"**

**BMR**

**A. MESSIER**  
(1970) Ltée.,  
423 Principale St.  
Granby, Que.  
Tel: 378-4666

**J.-S. BOURQUE**  
(1977) LTEE.  
235 Galt St.  
Sherbrooke  
Tel: 569-3693

**WHERE FRIENDLY SERVICE IS OUR BUSINESS!**

**Watch For Our Upcoming Ads...**

**'Every-three-or-four-year' syndrome . . .****End repainting costs with pre-finished siding**

If your house is in need of its "every-three-or-four-year" repainting, you may be shocked when the estimates come in. Costs of painting have skyrocketed the last few years.

Consider doing away with painting chores—and costs—by installing new pre-finished siding. It can make your old home look like new for years to come.

Take advantage of the wide range of colors now available and put as much care into decorating the outside of your home as you would with the inside.

Shades like olive, avocado, barn red, royal brown, colonial blue and autumn gold will make your home look cozy and snug.

You can accentuate the long and low lines of your ranch house by using horizontal siding in a color lighter than the roof.

Your Victorian castle (or other vintage style) can be preserved by careful selection of color and attention to detail.

Even though the new colors offer an almost unlimited choice, decorators advise never to use more than three colors on the outside of your home.

For instance, if you have a brown roof, think about a barn red siding, brown shutters, white window trim and a brown and white front door.

Several different types of siding are available, but aluminum siding probably has the widest range of styles, colors and accessories. It has been on the market for 30 years and has been used in re-siding over 10 million homes.

Aluminum siding comes in

## Right Combination Limits Condensation

There's a bonus attached to the use of energy-conserving wood windows. They also help to prevent messy condensation.

Condensation occurs when warm indoor air comes in contact with the cold inside surface of a non-thermal window. Moisture forms on the inside pane and sash and, unless constantly wiped up, drips down onto sill, wall and floor. It can cause extensive water damage.

In summer, the condensation procedure is reversed. Indoor air is cool, outdoor air warm. So it is the outside of the window that fogs up and the house siding that gets wet and stained. The year-round solution is wood sash windows, a natural insulator, with factory-applied weatherstripping to prevent air infiltration and insulating glass or storm sash to cut heat flow through the pane. This combination works because it keeps the window temperature relatively stable in all kinds of weather.

durable baked-on finishes, is easy to clean and offers time-proven low maintenance.

A recently introduced type of siding is vinyl plastic, a material that has been used for floor tile and plumbing pipe.

Be sure to buy from a reputable supplier, because vinyl material can become brittle when exposed to sunlight if not properly formulated.

Vinyl is limited mostly to white and pastel colors.

Pre-finished hard board is available in various patterns and colors, but does not have the longterm low maintenance characteristics of aluminum.

The exposed edges of pre-finished steel siding are vulnerable to the elements and may deteriorate if protective coatings fail.

Each type of pre-finished siding has its advantages, but all will change somewhat in color over a period of time once they are on your home and exposed to sun, wind, water and temperature extremes. This is called normal weathering.

When you buy siding, make sure to specify the insu-

lated kind. Plain siding, no matter what the material, does not have much insulat-

ing value.

When properly installed with insulating backer over

aluminum foil, however, siding can cut your fuel use as much as 20 percent.



**PRE-FINISHED SIDING** does away with repainting costs and makes your old home look like new for years to come. This home built in the 1920's has been restored with tan aluminum siding. The old wooden window casings were covered with custom-formed sections of white aluminum to provide low maintenance while keeping the original style of the home. Other trim details (such as soffit, fascia, gutters and downspouts) are also white. Black aluminum shutters provide the final accent.



*Ariens*

Just like a big industrial blower, the ARIENS SNO-THRO has a two phase system. One system crushes the snow and the other ejects it.

Every ARIENS comes with spiral blades. The blades feed the snow into the machine, crush it into a fine powder and push it into the fan, where it is ejected.

The ejector is a powerful blower in the heart of the machine. It can take the snow and throw it in any direction you like.

The ARIENS SNO-THRO comes in 4, 5, 6, 7, 8, and 10 h.p. models. Reverse gear and 5 forward speeds available on most models.

For really big snow-throwing jobs, see our line of ARIENS snow-tractors in 10, 12, 14, or 16 h.p. which can be equipped with an ARIENS 48" two phase extra-large snow-thrower.

**FREE STARTER**

Get a free starter when you buy an ARIENS SNO-THRO at the participating ARIENS dealer. Valid until December 1, 1977.

ARIENS put Old Man Winter right in his place.

BIG  
WORKERS  
COME IN  
SMALL PACKAGES

L. TANGUAY & FILS INC.

419 Papineau, 567-8474,      4364 Boul. Bourque, 569-8404

# Maximum Home Insulation Holds Fuel Bills In Check

When gasoline was a few cents a gallon cheaper, drivers weren't as concerned about energy-efficient cars. And, when home heating fuels were plentiful and cheap, few families bothered to insulate their homes properly. How times have changed!

Now — while Detroit retools for smaller cars, homeowners throughout the country are retrofitting older houses and demanding high insulation standards in new construction. Many Americans realize that fuel supplies must be conserved. Most fear they will not be able to afford the skyrocketing costs of home fuels. A well-insulated house is their only hope of keeping these costs in check.

Before the days of dwindling fuel supplies and rising prices, six inches of R-19 insulation in the attic and three inches of R-11 in the walls were considered adequate. Some insulation experts now feel that optimum, long-range fuel savings can be achieved by higher specifications based on the geographic location of a home and the cost of the fuel used in that area. For instance; in northeastern states using high-priced heating oil, 12 inches of R-38 insulation is suggested for attics. In milder climates, 9 to 10 inches of R-30 is recommended.

A home's greatest potential for heat loss in winter and heat gain in summer is through the roof and around windows. So these areas require special consideration when insulating. For roofs, this means sufficient attic ventilation to prevent damaging heat and moisture buildup. For windows, it means a good insulating material for sash and frame — wood is a natural insulator — tight weatherstripping, and insulating glass or storm sash.

What makes wood a natural insulator are the countless air holes — which serve as miniature insulators — contained in wood fiber. Comparative tests show that wood is four times as efficient an insulator as cinder block, six times more efficient than brick, 15 times more than concrete or stone, 400 times more than steel, and 1770 times more than aluminum.

Here's a less scientific, but equally-impressive test: on a hot day, touch metal and wood surfaces that have been exposed to the sun. The metal will be hot because it readily transmits heat. The wood will

be cooler because it is a poor heat conductor—and, therefore, a good insulator.

Factory-installed weatherstripping, like that found in modern, precision-engineered wood windows, is essential to good insulation because it limits air infiltration. Electric utilities estimate that air seeping through cracks around poorly-made windows and doors can account for as much heat loss as a three-foot hole in the wall. But, tight

weatherstripping on wood sash windows with insulating glass can cut heating costs for an average five-room house by almost 25 percent.

Insulating glass is actually two panes of glass with an insulating air space between. The inert layer of air trapped between reduces heat flow through the panes. Insulating glass is more convenient for the homeowner since it is permanently in place and presents fewer glass surfaces

to wash. For maximum insulation in extremely cold climates, triple glazing — storm sash over insulating glass — is recommended.

With cost-savings foremost in the minds of most homeowners, the economy of insulation has to be considered. A house that has insufficient insulation in walls, ceilings and floors, and windows of poor quality or poor insulating capability will naturally require a substantial retro-

fitting investment. But, a poorly-insulated house eats up fuel and costs dearly in bills for both winter heating and summer cooling.

Proper windows and optimum insulation on the other hand will yield sizable savings in fuel costs and a reasonably fast return on the investment. After costs are amortized, the improvements will continue to provide yearly savings and year-round house comfort.



**PRE-FINISHED LAUAN**  
4' x 8'

**4<sup>29</sup>** PER SHEET

**SNOW REMOVAL**

**Snow Shovel**  
Aluminum. For car use. **5<sup>55</sup>** ea.

**Snow Scoop**  
Galvanized Metal-24". **12<sup>50</sup>** ea.

Aluminum. **Scraper 24"** **9<sup>75</sup>** ea.

**CRANE TOILET**



Insulated White **65<sup>00</sup>** EA.

**PAINT**

**SICO**

SEMI-LUSTER LATEX **9<sup>99</sup>** GAL.

1ST QUALITY **9<sup>49</sup>** GAL.

**ARBORITE**

Choice of colours 2' x 4' **1<sup>75</sup>** PER SHEET

**AXE**



3 LBS 30" HANDLE **9<sup>99</sup>** EA.

**ELECTRIC WIRE**

14-2 **.10¢** PER FT.

\$10.00 for 100' roll

**WEATHER STRIP SET**

WITH CLI-MA-LOC RCR **7<sup>45</sup>** EA.



**20% discount on in stock hand tools**






Prices in effect to Dec. 3-77

## Appliance economics

According to the National Home Improvement Council, homeowners about to invest in appliances for their newly-remodeled kitchens are well-advised to consider investing in energy-saving models.

For example, selecting a new refrigerator will most likely be a surprising experience for the average homeowner. He'll find some amazing innovations, particularly power-saving features and improved insulation.

**Monsieur dismat**

lumber, materials... EVERYTHING for construction

**Théo Langlois**

300 St-François Blvd. South Sherbrooke 569-9191  
460 St-Patrice West Magog 843-3346