

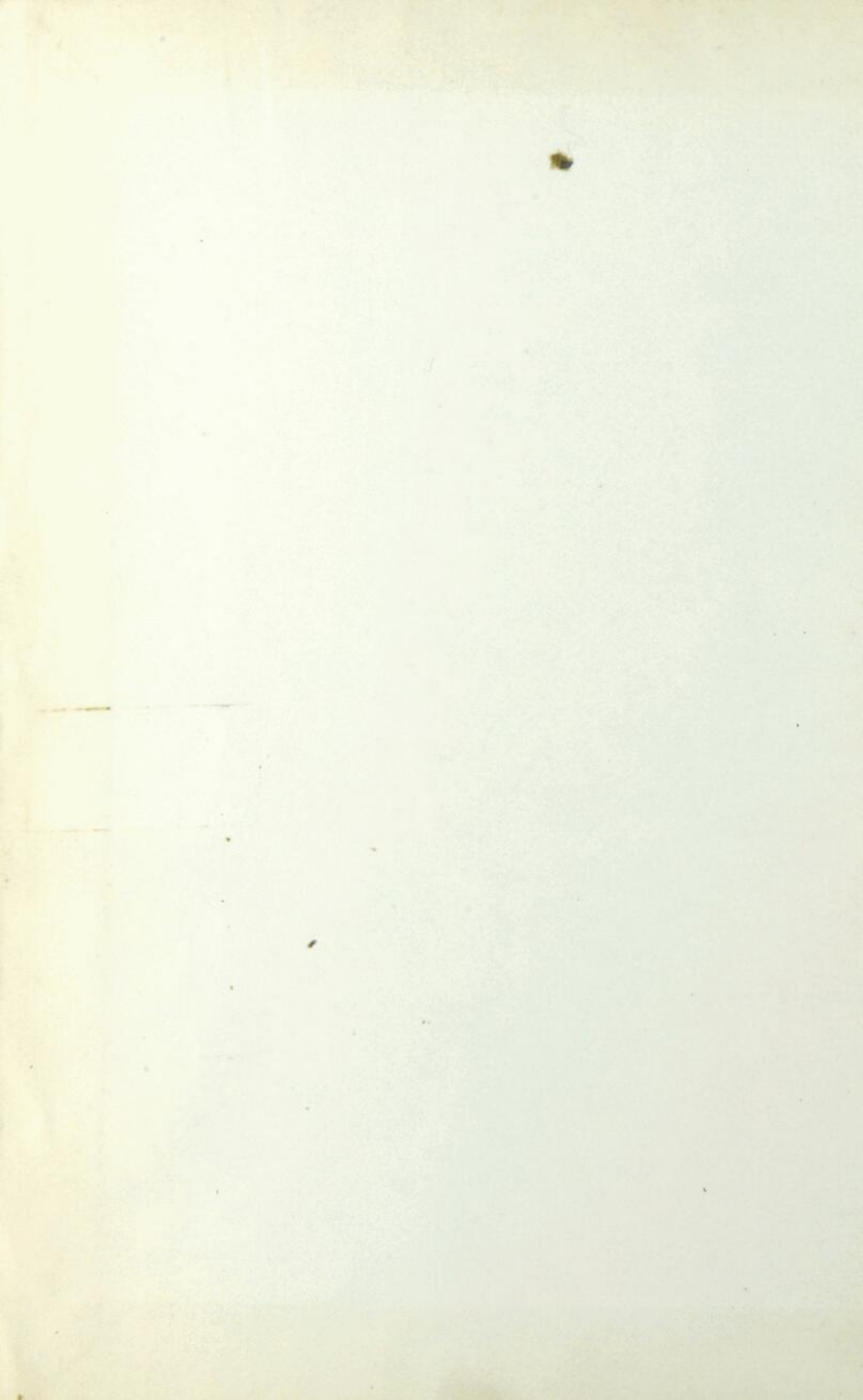
SALLE GAGNON



BIBLIO-  
THEQUE  
DE LA VILLE DE  
MONTREAL

MONTREAL  
CITY  
LIBRARY





# BANK OF MONTREAL

(ESTABLISHED 1817)

Incorporated by Act of Parliament

<b>CAPITAL</b> (all paid up)	\$14,400,000.00
<b>REST</b>	10,000,000.00
<b>UNDIVIDED PROFITS,</b>	801,855.41

## HEAD OFFICE - - MONTREAL.

### BOARD OF DIRECTORS:

RT. HON. LORD STRATHOONA AND MOUNT ROYAL, G.O.M.G., Honorary President,		
HON. SIR GEORGE A. DRUMMOND, K. C. M.G., President,		E. S. CLOUSTON, Esq., Vice-President
A. T. PATTERSON, Esq.	E. B. GREENSHIELDS, Esq.	SIR WILLIAM C. MACDONALD
R. B. ANGUS, Esq.	JAMES ROSS, Esq.	R. G. REED, Esq.
HON. ROBT. MACKAY.		

E. S. CLOUSTON, General Manager.

A. MACNIDER, Chief Inspector and Superintendent of Branches.

H. V. MERRITH, Assistant General Manager, and Manager at Montreal.

C. SWEENEY, { Superintendent of Branches British Columbia.	W. E. STAVERT, { Superintendent of Branches Maritime Provinces.
F. W. TAYLOR, Assistant Inspector, Montreal	E. J. HUNTER, Assistant Inspector, Winnipeg

## BRANCHES:

### IN CANADA:

MONTREAL.....C. W. DEAN, Assistant Manager.

<b>PROV. OF ONTARIO.</b> ALMONTE, BELLEVILLE, BRANTFORD, BROCKVILLE, CHATHAM, COLLINGWOOD, CORNWALL, DESERONTO, FENELON FALLS, FORT WILLIAM, GODERICH, GUELPH, HAMILTON, " Sherman Ave. KINGSTON, LINDSAY, LONDON, OTTAWA, PARIS, PERTH, PETERBORO, PICTON, SARNIA, STRATFORD, ST. MARYS, TORONTO, " Yonge St. Br. WALLACEBURG,	<b>PROV. OF QUEBEC.</b> COOKSHIRE, DANVILLE, FRASERVILLE, GRAND'MERE, LAKE MEGANTIC, LEVIS, MONTREAL, " Hochelaga " Papineau Ave. " Pt. St. Charles " Seigneurs St. " St. Henri " West End " Westmount QUEBEC SAVYERVILLE, ST. RAYMOND, WARWICK.	<b>PROV. OF NOVA SCOTIA</b> AMHERST, BRIDGEWATER, CANSO, GLACE BAY, HALIFAX, " North End LENENBURG, MAHONE BAY, PORT HOOD, SYDNEY, WOLFVILLE, YARMOUTH.	GRAND FALLS, HARTLAND, MONCTON, SHEDIAC, ST. JOHN, WOODSFOCK.  <b>PROV. OF BRITISH COLUMBIA</b> ARMSTRONG, ENDERBY, GREENWOOD, KELOWNA, NELSON, NEW DENVER, NEW WESTMINSTER, NICOLA, ROSSLAND, VANCOUVER, VERNON, VICTORIA.	OAKVILLE PORTAGE LA PRAIRIE WINNIPEG " Fort Rouge. " Logan Ave.  <b>NORTHWEST TERRITORIES.</b> CALGARY, Alberta. EDMONTON, Alta. INDIAN HEAD, Sask. LETHBRIDGE, Alta. RAYMOND, Alta. REGINA, Sask.
---	--	---	--	--

### IN NEWFOUNDLAND:

ST. JOHN'S, BANK OF MONTREAL. BIRCHY COVE, BAY OF ISLANDS, BANK OF MONTREAL.

### IN GREAT BRITAIN:

LONDON, BANK OF MONTREAL, 22 Abchurch Lane, E. O., ALEXANDER LANG, Manager.

### IN THE UNITED STATES:

NEW YORK, R. Y. HEDDEN and A. D. BRADTHWAITE, (Acting) Agents, 59 Wall Street.  
CHICAGO, BANK OF MONTREAL, J. M. GREATA, Manager.  
SPOKANE, WASH., BANK OF MONTREAL.

### BANKERS IN GREAT BRITAIN:

LONDON, The Bank of England.	LIVERPOOL, The Bank of Liverpool, Ltd.
" The Union of London and Smith's Bank, Ltd.	SCOTLAND, The British Linen Company Bank and Branches.
" The London and Westminster Bank, Ltd.	
" The National Provincial Bank of Eng. Ltd.	

### BANKERS IN THE UNITED STATES:

NEW YORK, The National City Bank.	BOSTON, J. B. MOORS & Co.
" The Bank of New York, N.B.A.	BUFFALO, The Marine National Bank.
" National Bank of Commerce in New York.	SAN FRANCISCO, The First National Bank.
BOSTON, The Merchants National Bank.	" The Ar to-Californian Bank, Ltd.

MONTREAL, 19TH DECEMBER, 1905.

# The Merchants Bank

## OF CANADA

ESTABLISHED 1864

Capital Paid-Up, - - \$6,000,000  
Reserve Fund and Undivided Profits, 3,473,197

HEAD OFFICE, - - MONTREAL

### BOARD OF DIRECTORS:

President, SIR H. MONTAGU ALLAN (Allan Line Royal Mail S.S. Co.)  
Vice-Pres., JONATHAN HODGSON, Esq. (Messrs. Hodgson, Sumner & Co.)

#### Directors:

JAS. P. DAWES, Esq. (Messrs. Dawes & Co., Brewers, Laohine.)  
THOS. LONG, Esq. (Messrs. Thos. Long & Bros., Collingwood.)  
CHAS. R. HOSMER, Esq. (Director Canadian Pacific Railway.)  
CHAS. F. SMITH, Esq. (President Jas. McCready Co., Ltd.)  
HUGH A. ALLAN, Esq. (of Allan Line Royal Mail S.S. Co.)  
C. M. HAYS, Esq. (General Manager Grand Trunk Railway.)  
ALEX. BARNET, Esq., Renfrew, Ont. (Wholesale Lumber Merchant and Saw Mills.)

E. F. HEBDEN, General Manager

T. E. MERRETT, Supt. of Branches and Chief Inspector

### BRANCHES AND AGENCIES:

ONTARIO				ALBERTA
Acton	Granton	Preston	Quebec	Alix
Alvinston	Hamilton	Renfrew	" St. Sauveur	Calgary
Athens	Hanover	Stratford	Shawville	Camrose
Belleville	Hespeler	St. George	Sherbrooke	Edmonton
Berlin	Ingersoll	St. Thomas	St. Jerome	Fort Saskatchewan
Bothwell	Kincardine	Tara	St. Johns	Lacombe
Brampton	Kingston	Thamesville	Town of St. Louis	Leduc
Chatham	Lancaster	Tilbury		Medicine Hat
Chateworth	Lausdowne	Toronto	MANITOBA	Olds
Chesley	Leamington	Walkerton	Arden	Red Deer
Creemore	Little Current	Watford	Brandon	Stettler
Delta	London	West Lorne	Carberry	Vigerville
Eganville	Lucan	Westport	Gladstone	Wetaskiwin
Elora	Markdale	Wheatley	Griswold	SASKATCHEWAN
Elgin	Mesford	Windsor	Macgregor	Arcola
Finch	Mildway		Morris	Carnduff
Formosa	Mitchell	QUEBEC	Napinka	Maple Creek
Fort William	Napanee	Beauharnois	Neepawa	Whitewood
Galt	Oakville	Lachine	Oak Lake	UNITED STATES
Gananoque	Ottawa	Montreal	Portage la Prairie	New York
Glencoe	Owen Sound	" 799 St. Cath. St.	Shoal Lake	W. McNab Ramsay
Gore Bay	Parkdale	" 2200 St. Cath. St.	Souris	Agent
	Perth	" 1086 St. Law. St.	Winnipeg	63 and 65 Wall St.
	Prescott			

A General Banking Business Transacted. Interest at 3 per cent. per annum allowed on Savings Bank Deposits of \$1.00 and upwards. Interest added to Principal Half-yearly.

Commercial Letters of Credit issued, available in China, Japan, and other Foreign Countries.

Letters of Credit issued to Travellers, payable in all Parts of the World. Drafts sold available in any city or banking town in the United Kingdom or United States.

Agents in Great Britain: **The Royal Bank of Scotland and Branches**

(Special attention given to the business of Emigrants.)

# The Garth Co.

ESTABLISHED 1828



**Brass and Iron Founders**  
**Hot Water and Steam Engineers**  
**Plumbers.**

— MANUFACTURERS OF —

**Gas and Electric Light Fixtures, Fire and Water Department Supplies, Brass Railings, Brass and Iron Grill Work.**

## CAST IRON FITTINGS

(From 1/4 inch to 12 inch and upwards).

— Ammonia Condensers, Hub-end Gate Valves, etc. —

\*\*\*\*\*

Penberthy Injectors,  
Wrought Iron Pipe,  
Malleable Iron Fittings,  
Hydrants,  
Coil Stays,  
Brass Pipe,  
Vandusen's  
Steam Jet Pumps,  
Braender's Jet Pumps  
and Water Elevators,  
Hoze Nozzles,  
National Meter Co.'s  
Water Meters.

\*\*\*\*\*



\*\*\*\*\*

Buckeye Bell Foundry Co.'s  
Bells.  
Branch Pipes,  
Jenkins Bros.' Valves,  
Wilhelmi Copper Boilers,  
Curtis' Pressure Regulators,  
McDaniel's Exhaust Heads,  
Steam Traps and  
Suction Tees.  
Bathroom Fittings,  
Fire Extinguishers.

\*\*\*\*\*

## 26 and 28 Craig Street West

Showrooms: 2442 St. Catherine Street

IRON FOUNDRY:

**Cor. Maisonneuve & LaGauchetiere Streets**

**MONTREAL.**

Telephones—

Office: MAIN 3667 Foundry: EAST 422 Showroom: Up 2493 Sales Department: MAIN 3668



SEND FOR CATALOGUES AND PRICE LISTS. —

## CORKS and BUNGS

### JOHN AULD,

Proprietor

*Canadian Cork Cutting Co.*

*Patent Machinery*

Office and Factory :

**642** Lagachetiere Street,

Corner Chenneville Street.

**MONTREAL.**

Every description of Cork on hand and cut to order, also Cork Wood and Cork Life Preservers. All sizes of Hard and Soft Wood Taps, Bungs, Spiles, Caps, Bottling Wire and Wax, Cork Driving and Capping Machines, Capules, etc., etc.

CANE  
BOTTLE  
BASKETS.  
TIN FOIL.

## PATENTS PROMPTLY SECURED

We solicit the business of Manufacturers, Engineers and others who realize the advisability of having their Patent business transacted by Experts. Preliminary advice free. Charges moderate. Our Inventor's Adviser sent upon request. Marion & Marion, Reg'd., New York Life Bldg, Montreal: and Washington, D.C., U.S.A.

## The DANSEUREAU AXLE COMPANY

MANUFACTURERS OF  
Collenge, Half-Collenge and  
Mail Axles. Dansereau's Patent  
Roller Axles. Self Oiler Lorrie  
Axles :- -:- :- -:- :- -:- :- -:-

Medal and Diploma at the Great World  
Fair of Chicago . . . . .  
All Axle repairs done at short notice.

OFFICE and FACTORY:  
**604 Papineau Ave., MONTREAL**  
MERCH. TEL. 2004.

**J. B. LOVELL**

**ELECTROTYPYER**

**25 St. Nicholas St.**

MONTREAL

# E. F. DARTNELL

**Building and Contractors' Supplies, etc.**

ESTABLISHED 1893

- SANDSTONES** . . . . . American, English and Canadian.  
**LIMESTONE** . . . . . Bedford (Indiana) Buff, from the  
celebrated P. M. & B. Quarries.  
**PRESSED BRICK** . . . . . All Colors, Canadian and American.  
**ENAMELLED BRICK.** . . . . . White and Colored, English, French  
and American.  
**PORCELAIN FACED BRICK.** White, Grey and Mottled, Eggshell  
Finish.

### COMMON BRICK

**ORNAMENTAL TERRA COTTA.**

### TERRA COTTA FIREPROOFING.

- LES GRES DE BIGOT** . . . . . The celebrated French Tiles and  
Terra Cotta, all colors.  
**GLASS TILES** . . . . . Plain and Fancy, White and Colored.

**CONCRETE MIXERS** and other **CONCRETE MACHINERY**

14 Distinct types of Concrete Mixers, including Gravity,  
Hand, Steam and Gasoline Power.

3 Distinct types of Measurers and Feeders, for Concrete Aggregates.

**STONE CRUSHERS AND SCREENS.**

**SCOTCH DERRICKS.** Hand, Steam and Electric.

### AERIAL CABLEWAYS.

**PLASTERERS' STEEL CORNER BEADS.** **WIRE LATH.**

**TOCKOLITH,** a Cement Paint for Ironwork.

**R. I. W. DAMP RESISTING PAINTS.** For iron and wood-work,  
brick walls (can plaster on direct without furring) &c.

**KONKERIT COATING.** For the outside of brick walls, to prevent  
the penetration of moisture.

**BOX STRAPPING.** **PAIL CLASPS.**

**BOX FASTENERS.** **CRATE HINGES, &c.**

**157 ST. JAMES ST., MONTREAL**

Bell Telephone Main 2984

Telegraph Address "DARTNELL, MONTREAL"  
A. B. C. Codes, 4th and 5th Editions used.

Telephone Main 2024

**E. A. COLE & CO.**

WHOLESALE DEALERS IN

**PAPER**

WRAPPING PAPERS, PAPER BAGS,  
TOILET PAPER, WALL PAPER, EN-  
VELOPES and STATIONERY, TWINES,  
COUNTER CHECK BOOKS, CALEN-  
DARS, PRINTING, Etc. e e e

Agents for **B. HELLER & CO.'S** Butchers' Chemicals and Supplies.

**84 Youville Square, - - MONTREAL.**

**Walls and Ceilings in Embossed Steel**

Aluminum, Copper, Zinc, Etc.

Artistic, Durable, Economical, Incombustible, Hygienic, Acoustic, the most perfect interior decorations.

IN STOCK

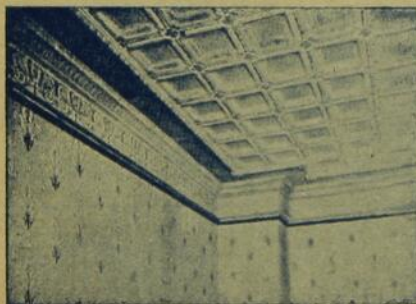
"Hays" Patent Metallic Lathing,  
Metallic Shingles and Sidings,  
Galvanized Steel Conductors,  
Pipes, Eaves and Troughs.

Material used is of the best and  
manufactured by

The Best Manufacturers of  
Canada and the  
United States.

Plans and Estimates free.

**J. BENJAMIN DAGENAIS**  
General Contractor



951 & 953 ST. JAMES STREET. Tel. Up 3192

# FYFE SCALE COMPANY



Scale Manufacturers

Designers of Scales for special purposes

CORNER ST. PAUL & ST. PETER STREETS

**MONTREAL**

Tel. Main 2447

## **EXCELSIOR**

FUR DRESSING and  
DYE WORKS

*Skins of all Descriptions Dressed and Dyed by*

### H. R. GUTHEIL

OFFICE AND FACTORY :

67 to 73 Amherst St.

Bell Tel. East 19.

Sole Proprietor

Dyeing Works 1329 Notre Dame St.

Bell Tel. Main 3025.

**MONTREAL**

## **E. F. WALTER & CO.**

—Importers and—  
Manufacturers' Agents

**Fine Cutlery**

**Fire Arms**

**Clocks**

**Hardware**

**Specialties**

166-168 MCGILL STREET

**MONTREAL.**

Bell Tel. Main 2728.

### JOS. B. LOVELL

Electrotyper

25 ST. NICHOLAS STREET

MONTREAL



# CANADIAN EXPRESS CO.

An improved and perfected system of Transportation in all its branches, resulting from the experience of over HALF A CENTURY, always appeals to the progressive merchant, who must have EXPEDITIOUS SERVICE, LOWEST RATES, and UNDOUBTED RESPONSIBILITY, all of which are abundantly afforded by the

## CANADIAN EXPRESS COMPANY

one of the Pioneer Express Companies of the World in the handling of FREIGHT and VALUABLES of every description.

### MONEY ORDERS

issued at any hour of the day, payable at par everywhere at very low rates—No delay. No blanks to fill out. Absolutely Safe.

*Always buy Canadian Express Co.'s Orders when remitting.*

*Reaches all important points in Canada and United States.*

*Special service and low rates to British Isles and the Continent.*

Collection Service of Notes, Drafts, etc., unexcelled.

JAS. BRYCE, Vice-President and Manager.

# James Hutton & Co.

**Joseph Rodgers & Sons, Ltd.**

Cutlery to His Majesty



**Steel, Peech & Tozer, Ltd.**

Steel Axles, Tyres, Spring Steel, &c.

**REPRESENTING**

**W. & S. Butcher**

Razors and Files



**Thos. Goldsworthy & Sons**

Emery and Emery Cloth

**Burroughes & Watts, Ltd.**

Billiard Tables and Billiard Supplies

**Sovereign Bank Building, Montreal**

# ALEX. McARTHUR & CO.

LIMITED

..... MANUFACTURERS OF .....

**Tarred**



**Felt**



FIBRE AND BUILDING PAPERS

Cyclone Brand "Registered"

Crown Brand

Joliette Sheathing } Tarred and Dry.  
Grey and Straw }

Carpet Felt

Distillers of Coal Tar

2 and 3 ply Ready Roofing

Roofing Cement, Pitch

Hanging, News, Print Paper

Manilla, Brown, Fibre, Kraft & Grey  
Wrappings



OFFICE:

**82 MCGILL ST., MONTREAL**

*Roofing Felt Factory:*

*Harbour and Logan Streets*

*Paper Mills:*

*Joliette, Quebec*

# C. A. Chouillou & Cie.

*General Brokers*

REPRESENTING some of the Leading Firms  
in the World in the following Lines:

## Mediterranean Fruits.

Specialty of French and  
Spanish Nuts and Almonds

Sugars, Molasses and Syrups

No. 1 Round Boiling Peas. Split Peas

H. P. and Prime Beans

Rolled Oats. Pot and Pearl Barley

Coffees and Spices.

Canned Goods & Foreign Cheese

Lobsters, Salmon & Ham for export


Dried and Evaporated Apples

Chemicals and Drugs

for the Grocery Trade.

**IMPORTATION. COMMISSION.**  
**EXPORTATION.**

*Correspondence  
solicited.....*

**It will pay to  
communicate  
with us   
before buying**

*Prompt attention given to Orders.*

Office and Sample Rooms

**14 PLACE ROYALE**  
(Old Custom House Square)


**Montreal**

# Dominion Line Steamships

## WEEKLY SAILINGS:

IN SUMMER—Montreal to Liverpool

IN WINTER—Portland to Liverpool,  
calling at Halifax Westbound


 THE Fleet is headed by the S.S. "CANADA," one of the fastest steamers in the Canadian service, having made the passage between Great Britain and Canada in 5 days, 23 hours and 48 minutes.

**The S.S. "CANADA"  
and S.S. "DOMINION"**

Have very fine accommodation for all classes of passengers.

## To Europe in Comfort at Moderate Rates ---

*By the following Steamers:*

 S.S. "OTTAWA" (formerly the White Star Line S.S. "Germanic"),

S.S. "KENSINGTON" and S.S. "SOUTHWARK."

These steamers carry only one class of cabin passengers, namely, Second Cabin, to whom will be given the accommodation situated in the best part of the vessel. This accommodation includes Promenade Decks, Smoke Rooms, Ladies' Rooms, etc., all amidships, and meets the requirements of that section of the travelling public, who, while wanting the best the steamer affords, do not care to pay the higher rates demanded for such in the ships having two classes of cabins.

For all information as to passage or freight, apply to Local Agents, or to

**DOMINION LINE OFFICE,  
17 St. Sacrament St., Montreal**

.. THE ..  
**BEDFORD MANUFACTURING CO.**

MANUFACTURERS OF

**Axes, Scythes,  
 Rakes, Hoes,  
 Forks, Grass Hooks,  
 Lightning  
 Hay Knives**

And all kinds of Hand Implements  
 for the Farm and Garden.

**Bedford, P.Q.**

LOOK FOR THE  
 BEDFORD  
 COMPANY'S  
 GREEN LABEL  
 WHICH IS  
 ONLY FOUND  
 ON THE  
 HIGHEST  
 QUALITY OF  
 HARVEST  
 TOOLS.

Sole Ma  
 of the  
 FAMOUS  
 BEDFORD  
 EBONY  
 and  
 CROWN  
 AXES

:: :: THE :: ::  
**Bedford Manufacturing Co.**

Manufacturiers de

**Haches, Moissonneuses,  
 Faucheuses, Rateaux,  
 Houes, Fourches,  
 Faucilles pour l'Herbe,  
 Couteaux a Foin Lightning**

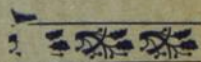
Et toutes sortes d'Instruments à main  
 pour la Ferme et le Jardin.

**Bedford, P.Q.**



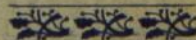
Recherchez  
 L'ETIQUETTE VERTE  
 de la  
 COMPAGNIE  
 BEDFORD

Il ne se trouve que sur  
 les  
 OUTILS A  
 RECOLTER  
 de la plus haute  
 qualité.



Seu. manufacturiers  
 des fameuses

HACHES  
 "BEDFORD  
 ÉBONY"  
 ET  
 "CROWN"



**LES PLUS GRANDS MANUFACTURIERS  
ENTRE MONTREAL ET QUEBEC**

**LS. GARON & GIE.**

LS. CARON, FRÈRE.

LS. CARON, FILS, Architectes

**Manufacture de Chassis, Portes et Jalousies et  
Moulins à Raboter**

Nouveaux, Modernes, les plus Considerablés et les meux Outillés

**Constructeurs et Entrepreneurs**

**L'OUVRAGE à**  
l'intérieur  
des Eglises recoit  
tout spéciale-  
ment notre at-  
tention.



Presque tous les travaux de ce genre, de même que les contrats pour tout ce qui se rapporte à la construction des Cathédrales, Eglises Paroissiales, Collèges, Convents, et Edifices Publics à une portion très considérable du pays ont été exécutés par notre maison.

**Rue St. Jean Baptiste, NICOLET, P.Q.**



**LARGEST MANUFACTURERS  
BETWEEN MONTREAL AND QUEBEC.**

**LS. GARON & GO.**

(LS. CARON, Sen:

L. S. CARON, Jun., Architect)

**NEW, MODERN, MOST EXTENSIVE & BEST EQUIPPED**

**SASH, DOOR AND BLIND FACTORY**

**— AND PLANING MILLS —**

**Builders and Contractors**

**Interior  
Church Work**

receives our  
special attention.



Nearly all work of this description, as well as contracts covering everything for the building of Cathedrals, Parish Churches, Collèges, Convents, and Public Buildings generally throughout a very extensive section of country, have been carried out by our firm.

**St. Jean Baptiste St., NICOLET, P.Q.**



---

**W**HEN ordering your next supply of Stationery, ask your Printer for

## Burmese Bond

Easy to write on, and easy to type on.

---

New Photo Book.

Favorite Paper for Catalogue Work.

Stocked in usual weights and sizes. Samples gladly supplied on application.

---



CANADA PAPER CO. LTD.  
MONTREAL.

# College Commercial du Sacre Coeur

Victoriaville, P.Q.

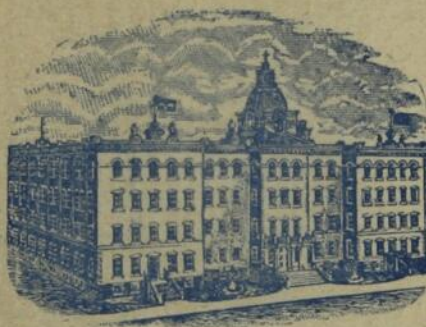
# Commercial College of the Sacred Heart

Victoriaville, P.Q.

**C**E magnifique édifice, complété au mois d'août 1905, occupe un site des mieux appropriés aux fins d'une bonne éducation. Ses appartements vastes et bien aérés sont pourvus d'un splendide matériel. Il est entouré de jardins, de bosquets et de vastes terrasses qui permettent aux élèves de se livrer à des exercices physiques nombreux et variés.

Le cours d'études comprend toutes les branches d'un enseignement commercial français et anglais.

Rev. FRERE OCTAVIUS, directeur



**T**HIS magnificent building is entirely new, having been completed in August, 1905. It occupies an unrivalled location in point of health and salubrity; its large and well-ventilated rooms are supplied with all modern accommodations; it is surrounded by extensive playgrounds which afford to the scholars a great variety of physical exercises.

The course of studies comprises all the branches of a thorough and practical business education in English and in French.

Rev. BRO. OCTAVIUS, director

Long distance Phone East 2430

## The Fur Dressing and Dyeing Co.

581-595 CLARK STREET,

ST. LOUIS,

Near Montreal, Canada

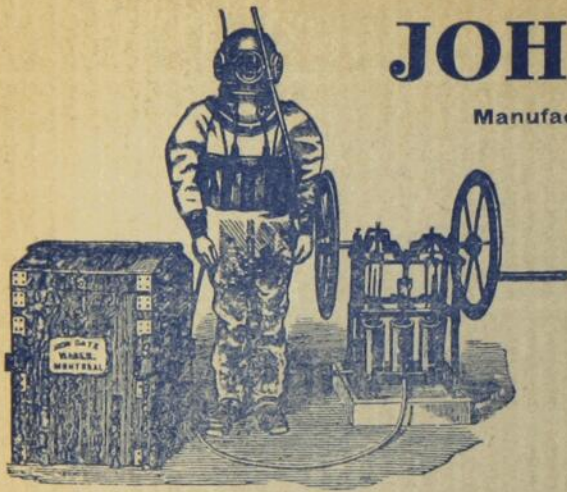
All kinds of Furs  
Dressed, Dyed or Blended

### Our Stocks are very complete in

**Printers' Papers** (Wove and Bonds)  
**Bookbinders' Cloth, Leathers, Marble Papers**  
**Paper Box Makers' Leatherette, Glazed Papers, etc.**  
**PASTE: "STEK-O" the Great Sticker.**

Write for Samples

THE WILSON MUNROE COMPANY, Ltd., 106 York St., Toronto, Ont.



# JOHN DATE

Manufacturer of

*Diving Apparatus*  
*Patent Dry Earth*  
*Closet Commodes*

BRASS FOUNDER and  
COPPERSMITH  
APPARATUS  
for Sale or Hire.

654 and 656  
**CRAIG STREET**  
(New No. 152 West)  
MONTREAL.

## The MORTON COMPANY, Ltd.

Special Manufacturers of Carbon & Automatic  
**COUNTER CHECK BOOKS**



Sole Manufacturers of the Improved  
Automatic Books which give clear and  
distinct duplicate and triplicate copies with-  
out the use of the loose carbon sheet.

**"The Favorite of All."**

Write or Telephone for prices:  
MONTREAL Phone Main 1882 TORONTO

Large Manufacturers of

**SHIPPING TAGS**  
**ENVELOPE TAGS**

Only the best material is used in our Goods.

260 St. James St., MONTREAL  
King Street West, TORONTO

For TAGS or BOOKS

Write or Phone

260 St. James St., Montreal  
Main 1882

T. W. OLD, Agent

## J. B. LOVELL,

Electrotyper

23 ST. NICHOLAS ST., MONTREAL

# PELICAN and BRITISH EMPIRE LIFE OFFICE

Founded 1797

The Oldest Proprietary Office in the World transacting  
Life Assurance business only.

Head Office in Canada . MONTREAL

TOTAL ASSETS exceed \$25,500,000  
CLAIMS PAID exceed \$67,500,000

Large Bonuses. Moderate Premiums

Canadian Board of Management:

THOMAS FYSHE, Esq. W. M. MACPHERSON, Esq.  
R. MACDOUGALL, PATERSON, Esq.

Attorney and Manager for Canada :

A. McDOUGALD.

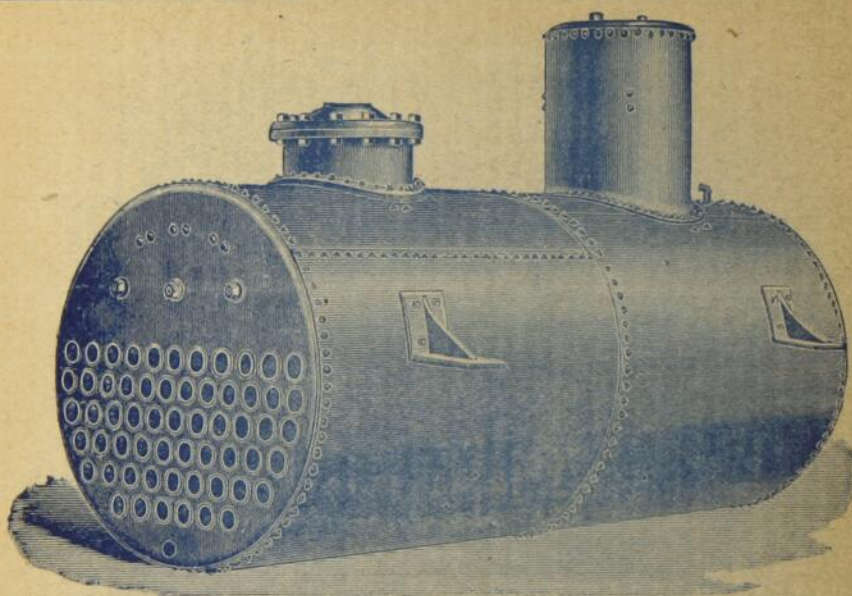
FINE  
BOOK  
AND

23-25  
St. Nicholas  
Street

John Lovell & Son, Ltd.

JOB  
Printing

MONTREAL  
QUE.



## The Plessisville Foundry

Hon. N. C. CORMIER,  
President

Plessisville, P.Q.

J. H. DUTIL,  
Manager

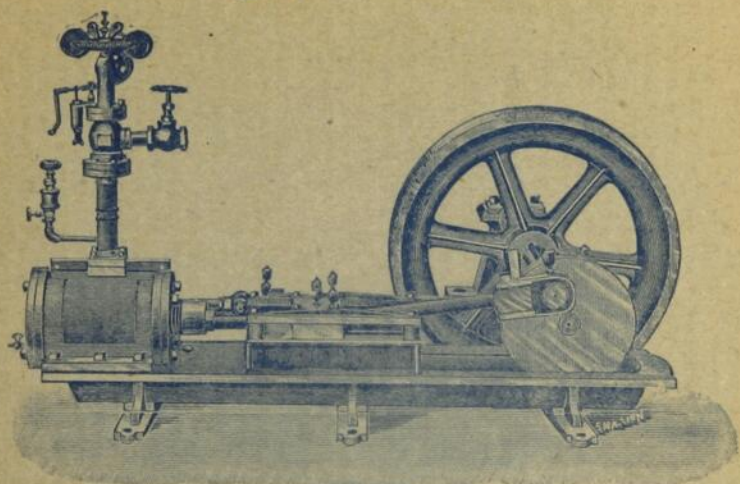
Manufacturers of

### Machinery of all kinds

SUCH AS

Steam Engines, Horizontal, Upright and Portable Boilers, Turbine Vulcan Water Wheel, "Napoleon" Water Wheel, Saw and Shingle Mill Machinery, Matchers and Surface Planers, Saw Double Edgers, Double Butting Saws, Saw Gang Slab Machines, Double Butting Saw and Slab Machines combined, Re sawing Machines, New Clapboard Machines, Pony Matcher-Planer, Pony Planer (16, 20 and 24 inch), Shingle Machines with Edger Knives; also with Spring Table combined with Saw; also Improved Dunbar System Shingle Machine, Moulding Machines—7 and 10-inch, Ricker Machines, Buzz Planers (12 and 16-inch), Double Head Shapers, Post Band Saws, Wood Turning Lathes, Knife Grinder Stands, Mortise Machines, Emery Wheel Stands, Double Emery Wheel Grinder, Combined Disk and Drum Sander, Wood Frame Swing Saw, Butter Saw, Shingle Machine, Shingle Packer Stand, Cheese Box Headings Cutting Machine, Press for Packing Cheese Box Headings, Lath Machines with Bolter, Drag Sawing Machine, Swing Sawing Machine on Bench for Firewood, The "Dupont" Power Hammer, Butter and Cheese Factory Outfits, Shafting, Hangers, Pulleys, Moreau's Pulp Wood Barker Machine, Lemire's Stone Lifter, Monfet's Stone Lifter, Wire Nails, etc.

Blacksmiths and Carriage Makers' Supplies — of all —  
descriptions



# La Fonderie Plessisville

*Plessisville, P.Q.*

Hon. N. CORMIER,  
President

J. H. DUTIL,  
Gérant

Manufacturiers d'

## Outillages de toutes sortes

TELS QUE

Engins à vapeur, bouilloires horizontales, verticales et portatives, roues à l'eau "Vulcan" et "Napoleon," scies et outillages pour moulin à bardeau, planers à surface, machines à embouvetter et à raboter pony et champion amélioré, déligneurs doubles à deux scies "Edgers," scies à couper de travers double, table pour scier les croutes et les tringles en bois de corde, scie de travers double à madriers et à croutes, machine à refendre "Catherine," machine à clapboard, machine à planer 16, 20 et 24 pouces, machines à bardeau avec déligneur à couteaux ; aussi avec table à ressort combiné avec scie ; aussi système "Dunbar amélioré," machines à moulures 7 et 10 pouces, Machines à fuseau "Ricker," corroyeurs de 12 et 16 pouces, machines contourneuses et à fraiser, scies à ruban fixées sur poteau 28" et 36" roues, tours à bois, glissières à aiguiser couteaux, machines à mortaiser, supports à meule emery, émondeurs d'établi double rouleau à polir combiné avec disk, scies balançoires sur échelle, scies à botter, machine à paqueter le bardeau, machines à découper les fonds de boites, presses à paqueter les fonds de boites, machine à lattes avec scie à refendre, godendard mécanique, scies pour débiter bois corde sur chevalet avec berçoir, marteau à pouvoir "Dupont," outillage pour fromageries, et beurreries, arbres de couche, supports, poulies, machines à écorcer le bois de pulpe "Moreau," arrache-pierres et souches "Lemire," arrache-pierres "Monfette," clous de broche, etc.

Fournitures et Outillage de toutes descriptions pour

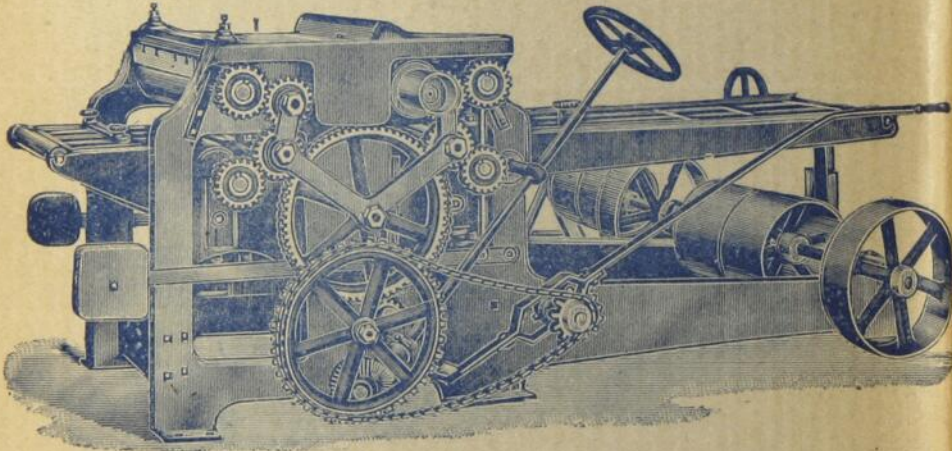
**Forgers et Carrossiers.**

# THE SAVOIE-GUAY CO.

C. E. GOSSELIN, N.P.  
President

J. ARTH. SAVOIE,  
Secretary

F. T. SAVOIE, M.P.  
Man. Director



## MAKERS OF

Turbine Water Wheels of all sizes, Gasoline and Steam Engines, Circular Saw Mills, Double Edgers, Shingle Mills, Planers and Matchers, Buzz Planers, Shaping Machines, Lath Machines, Band Saws, Polishing Machines, Trimmers of all descriptions, Butter and Cheese Factory Outfits. Moulding, Mortising, Tenoning and Resawing Machines, "Catherine" Resaw Machine, Acetylene Gas Generators, Shafting, Hangers, Iron and Wood Pulleys and Machinery of all descriptions for factories and saw mills.

## FABRICANTES DE

Turbines hydrauliques améliorées de diverses dimensions, Moteurs à Gazoline, Machines à Vapeur, Mécanismes de Scie Ronde, Déligneuses doubles, Machines à bardeau, Raboteuses-bouveteuses, Machines à façonner le bois, Machines à moulures découpées (shapers), Machines à lattes, Scies à ruban, Rouleaux à polir, Godendards à table, à bascule et suspendus pour le bois de corde et de pulpe, Machines à tenons, Machines à percer et mortaiser, "Catherines," Articles de Fromageries et Beurrieres, Générateurs à gaz acétylène, Arbres de couche, Supports Papiers en fonte et en bois, Pompes Buck, enfin toutes espèces de machines pour moulins à scie et manufactures.

Plessisville, P.Q.

# MACKENZIE MANN RAILWAY SYSTEM

James Bay Railway  
Halifax and South-  
Western

Great Northern of  
Canada.  
Inverness Railway &  
Coal Company



**FISH,  
FLESH  
and  
FOWL**

**RIVER,  
LAKE  
and  
MOUNTAIN**

## Summer Homes

in the

## Laurentians

**TWO HOURS FROM MONTREAL**



**Shawinigan Falls on the St. Maurice River.**

"MORE PICTURESQUE THAN NIAGARA."

Midway between Montreal and Quebec.

**WATER POWERS, MILL SITES, ETC., FOR SALE.**

C. W. SPENCER,  
General Manager,

Montreal

GUY TOMBS,  
Gen. Freight & Pass. Agent

# QUEBEC CENTRAL RAILWAY

... The Tourist Route Between ...

Quebec & Portland,  
 Quebec & Boston,  
 Quebec & Springfield, and  
 Quebec & New York.

---

Pullman Palace Cars Without Change.

— BETWEEN —

**QUEBEC and PORTLAND** via Dudswell Jc. and Maine Central R. R. passing through the heart of the White Mountains.

**QUEBEC and BOSTON** via Sherbrooke & Boston & Maine R. R., this being the direct route for all New England points.

— AND —

**QUEBEC and NEW YORK** via Sherbrooke, Boston and Maine R. R. and Springfield.

---

Only Line running solid trains between Quebec and Boston, and between Quebec, the White Mountains and Portland.

---

For Time Tables, Folders, Tourist Guides and all information,  
 ... APPLY TO ...

**P. R. NEILL,**  
 Trav. Pass'r. Agent, Room 80  
 North Station, Boston, Mass.

**E. O. GRUNDY,**  
 Gen'l. Pass'r. Agent. Sherbrooke, Que.

**F. S. STOCKING,**  
 City Pass'r. and Ticket Agent, Quebec.

**J. H. WALSH,**  
 General Manager,  
 Sherbrooke, Que.

LOVELL'S

# Classified Business Directory

FOR 1906-7

---

PROVINCE OF QUEBEC



PRICE \$4.00

Montreal :

JOHN LOVELL & SON, LIMITED, PRINTERS AND PUBLISHERS.

1906.