

# Journal

2013 • 2014 | ENGLISH VERSION



## PARC NATIONAL DU MONT-ORFORD







# THE MUST-DOS



## ► DISCOVERY ACTIVITIES

### Follow the guide!

Parc national du Mont-Orford is proud to present its discovery activities for the whole family. Whether this is for an evening talk in the amphitheatres, a nocturnal exploration, tales around the camp fire, a guided ramble in the woods or an outing on the water by rabaska canoe or kayak, you will enjoy discovering the beauties of the park with an enthusiastic park warden. Check the program guide on pages 12 to 14.



## ► CROSS-COUNTRY SKIING AND SNOWSHOEING

### Trails and paths for all tastes!

The park is a must for those who adore outdoor winter activities. The visitor, whether beginner or expert, will find a trail to suit him.

- 50 km of marked, groomed and packed cross-country skiing trails (including 26 km for ski skating).
- Nearly 50 km of marked snowshoeing trails.

A fabulous way to see these magnificent landscapes!



## ► SEE THE AUX CERISES POND BY WATERCRAFT

### Explore the valley upstream from Cherry River

Whether you go by kayak or in a canoe, discover this beautiful, rich and biologically diverse stretch of water. From May to October, you can rent a canoe or kayak, and depart from the Visitors Centre. In this trip on the pond you will discover an enchanting place, with fascinating species of flora and fauna. Floating islands, Common loons, snapping turtles, river otters and carnivorous plants will appear before your eyes.



## ► HIKING

### Lace up your shoes! Ready? Get walking!

Hiking is without doubt the best way to discover the parc national du Mont-Orford. It is the perfect opportunity to check out the many observation points said to be among the most spectacular in the entire Eastern Townships. In the autumn, the sugar maples provide a colourful show for hikers.



## ► NATURE CABINS

### An unforgettable experience complete with all the creature comforts

Stay in one of our five new Nature cabins named in honour of former occupants of the park before it was created. These cottages are compact and comfortable and all-equipped for four persons. They are located in the heart of the summer and winter activities.

Starting at

**\$151**/night/cabin

4 persons

Taxes and entry fees are extra

# WELCOME



## A VALLEY LINED BY THE APPALACHIAN MOUNTAINS

Parc national du Mont-Orford is the proud representative of the natural region of the Sutton Mountains, which are an extension of the Green Mountains of Vermont. The broad rounded crests, interspersed with wide valleys and overlooked by the imposing massifs that are so characteristic of the park, form a part of the Appalachian mountain chain. A happy mixture of water courses, forests, valleys and mountains, the park's territory offers a variety of ecosystems in which evolve about 211 animal species and 230 plant species, all adapted to their environment. Among these are 31 species considered to be at risk and 4 exceptional forest ecosystems. The maple grove is the heart of the park's forests. It covers nearly 75% of its area. With the arrival of fall, the beautiful red foliage of the sugar maples always wins the hearts of visitors and local inhabitants alike. This year, the Parc celebrates its 75<sup>th</sup> anniversary. Keep informed about our activities.

### ENTRY FEES VALID FROM APRIL 1, 2013 TO MARCH 31, 2014

CATEGORY OR GROUP	DAILY RATES	ANNUAL PARK CARD	ANNUAL NETWORK CARD
Adult (18 or over)	\$6.50	\$32.50	\$58.50
Child (6 to 17)	\$3	\$15	\$27
Child (0 to 5)	Free	Free	Free
1 adult with children 6 to 17	\$9.50	\$47.50	\$85.50
2 adults with children 6 to 17	\$13	\$65	\$117
Organized adults group	\$5.75	N/A	N/A
Organized youth group (aged 6 to 17)	\$2.50	N/A	N/A
School or student group	Free	N/A	N/A

Taxes included. Annual Park or Network card is valid for 12 months.  
The prices, terms and services mentioned in this journal are subject to change without notice.

## Your Safety : Your Responsibility



Outdoor activities can involve certain risks. Make sure that you have the skills and abilities required for the activity you choose. It is important to know the risks inherent to this activity, to respect your limits and to use appropriate equipment. For more information, we invite you to consult our Web site at [sepaq.com](http://sepaq.com).

## REGULATIONS



To contribute to improving the quality of the park experience, an entry fee was established by the government. You must always carry your receipt or your annual card during your visit.



To preserve the natural riches for future generations, it is prohibited to remove natural elements (animals, plants, dead wood, rocks, etc.).



The flora is sensitive to being trampled. If we multiply the impacts of thousands of visitors, it's easy to understand why it is mandatory to stay on the hiking trails.



Nature exhibits exemplary equilibrium. The animals find everything they need to eat here, and that is why feeding wildlife is prohibited. In this respect, it is also prohibited to leave food or garbage unsupervised. Keep them in your car.



Domestic animals are prohibited in Québec's national parks. But guide dogs and service dogs accompanied by their foster families are admitted. However, these dogs must be easily identifiable, wearing the Mira scarf or harness. Those in charge of the animal must carry the foundation's letter of accreditation.



It's great to enjoy an authentic natural environment that is clean and healthy! Carry out your garbage, leave it in the containers provided, and take home any harmful substances, such as soap, oil, combustibles or pesticides.



For the preservation of the milieu and for your safety, only a certain number of activities are allowed in these parks. Plan your visit and first check the list of activities that are allowed in the parks you plan to visit.

# MAKE A DIFFERENCE



**Here are the actions you can contribute when you visit the park, little gestures that will help make a difference in fulfilling the territory conservation mission:**

- Respect the "trail-closed" periods (spring thaw, restoration work, etc.).
- Use your vehicle only when necessary and cut your motor off when you stop.
- Dispose of your own trash, recyclable materials and empty propane tanks at the appropriate places.
- Do not dispose of batteries and dangerous products in bins and containers set aside for recycling.
- Use rechargeable batteries in your pocket lights and other outdoor camping equipment.
- Avoid carrying firewood from one region to another.
- Use twigs lying on the ground to toast your marshmallows to save the living branches of shrubs and trees.
- Stay on groomed trails rather than taking a shortcut between the camping sites.
- Minimise the use of wood for campfires to help reduce atmospheric emissions (a significant source of pollution).
- Protect water courses – don't use any soaps or detergents when near them.

## MOTHER NATURE AS A HUGE PANTRY

Did you know that feeding wild animals can have serious consequences? Nature, as a big, well-balanced larder, provides all the animals need to survive. The simple act of throwing a crust of bread to a Canada goose or a piece of cookie to a raccoon contributes to changing their behaviour. In the long run, they will come to lose their fear of humans and will look for humans, with all the consequences that implies. Campers receiving nocturnal visits from hungry raccoons will attest to the fact that it is no pleasant thing to have to fight off a small and determined thief. Every year, a considerable effort is made by park employees to deal with the difficulties that can be caused by animals that have lost their fear of humans.

Thank you for not feeding the wildlife!

## DISCOVER THE FONDS PARCS QUÉBEC COLLECTION AND DO YOUR PART FOR CONSERVATION!

One dollar will be donated to Fonds Parcs Québec for each item purchased.

Donations to Fonds Parcs Québec serve to support the conservation of Québec's national parks. Through the funding of research, knowledge acquisition, and species population monitoring and inventory, vital data are obtained to particularly safeguard plant and animal species.

The collection is available at the Boutique Nature shop.

**BOUTIQUE  
NATURE**  
Parcs Québec

**FONDS**  
Parcs Québec  
fondsparcsquebec.com



# BEHIND THE SCENES

## FOUND IN THE UNDERGROWTH

In southwestern Quebec, in the shade of mature maples is found an endangered species, which has been highly sought after for hundreds of years. We recognize it by its singular leaves and its fleshy, vivid red fruits: it is American ginseng (*Panax quinquefolius* L.).

The northern limits of its distribution are southern Quebec and Ontario. Over harvesting and the loss of its habitat are the main reasons for the decline of this species. In the province of Quebec, most of the populations are small, dispersed and non-viable. By "viable", we mean a population large enough to resist the fluctuations normally found in the habitat without leading to its long-term decline. Diseases, windthrow (trees uprooted by wind) and major ice storms are a few examples.

At parc national du Mont-Orford, several non-viable populations have been followed for a number of years. Some have seen a marked decline. Since 2010, research in various habitats has been carried out in the hope of finding other populations on the territory. In 2011, these efforts were rewarded by an unexpected find in the Estrie region. With the help of botanists and the Ministère du Développement durable, de l'Environnement, de la Faune et des Parcs (MDDEFP), a viable population was discovered. The quality of this population remains to be determined, but it would be the biggest in the Eastern Townships.

It goes without saying that as a conservation park, it is our duty to protect this jewel living in the shade of our Quebec maple stands!



## BEAUTIES FROM THE ABOVE SKIES

The parc national du Mont-Orford team is very pleased with new discoveries made over time in the park that allow the team to pursue the mission of conservation, protection and development of our heritage. During the 2012 summer season, based on an exploratory survey of odonata (insects encompassing dragonflies and damselflies), a preliminary list of 26 species was drawn up in 3 field visits in the Lac-Stukely sector.

This first summary-inventory showed a species not yet mentioned in the Estrie region: the Clamp-tipped Emerald (*Somatochlora tenebrosa*), a dragonfly rarely observed in Quebec. Another wonderful discovery was the Eastern amberwing (*Perithemis tenera*). This latter species was mentioned for the first time in Quebec in 2007. This is the second mention of this species for the Estrie region. This inventory, which was carried out by Roxanne S. Bernard, technician in entomology, as part of an initiative to prepare an atlas of dragonflies in Quebec, should continue this year. Who knows what other wonderful surprises in our rich area are waiting to be discovered?

## PEREGRINE FALCONS

The summer of 2012 was again a fruitful season for the pair of Peregrine falcons nesting on the "Aux Corbeaux" steep cliffs. One chick was born! As was the case in other years, to limit disturbing the birds, this site was closed to climbers and hikers for several weeks. We remind you that the Peregrine falcon is a vulnerable wildlife species in Quebec.

To find out more about the research activities in the park, please click on the tab **CONSERVE AND PROTECT** on the park's [www.parcquebec.com](http://www.parcquebec.com).



The Parcs Québec blog on parks conservation has been launched. To get on board: <http://www.sepaq.com/parcs-quebec/blogue>

# NEWS FROM THE TERRITORY



## THE REMAKING OF RUISSEAU-DAVID TRAIL; KEEPING YOUR FEET DRY!

Those who have tried it in recent years will tell you, the Ruisseau-David trail really needed some upgrading! This is why the park undertook restoration work in the summer of 2012. The trail, which is approximately 3.9 km long, provides access to the summit of the Mont Chauve, from Route 220.

The work was mainly to repair 2.5 km of the initial layout and to replace 10 sections of trail (2.2 km) that were determined to be non-repairable. In keeping with our usual approach, we tried to use material found on site. By-passes, winding bits of trail, stone steps, drainage channels and wooden pedestrian bridges were kept and the walking surface improved along with the structure of the trail. Certain sections were also moved to allow new observation areas to be added.

While the work was underway, the characterization of the new trail revealed the presence of several clumps of Canadian maidenhair fern (*Adiantum pedatum*). This plant was listed as vulnerable in Quebec in 2005. To protect these plants, it was necessary to find a by-pass route. Several options were considered; the one retained allowed the trail to be enhanced by following a beautiful rockface.

The park team is proud to offer visitors an all-new Ruisseau-David trail. The development allows the natural environment to be protected, the trail to be given a perennial lease on life and an improved experience provided for the hiker.

## ENLARGEMENT CHRONICLES

In 2009, Sépaq was given a mandate by the Ministère du Développement durable, de l'Environnement, de la Faune et des Parcs to oversee the lands earmarked for the enlargement of the parc national du Mont-Orford. In addition to protecting the territory against all actions that could have compromised the conservation of the ecosystems found there, we are taking advantage of this oversight role to learn more about these riches. Here are some examples:

### A bit of protection...

Twice during the summer of 2012, our park wardens had to intervene to control root fires. Fortunately, they were discovered before they had grown too large, but they were extensive enough to require intervention by the forest fire protection employees from the Société de protection des forêts contre le feu (SOPFEU). In both cases, the fires were caused by illegal camp fires. This is a good example of why fires should be restricted to the areas set aside for them!

### And a bit of conservation...

To find out more about some raptors of the night (owls) in the enlargement area, an inventory of certain sectors was carried out in the spring. Recordings of calls of the species being sought were used: these birds, in the middle of their nesting season, saw these calls as an invasion of their territory and quickly made their presence known, whether by responding or by approaching the intruder directly to chase him or her away. We were able to confirm the presence of the Barred owl and the Northern saw-whet owl. These results encouraged us to continue our research in 2013, in other areas of this beautiful territory!



# WELCOME TO GROUPS

## NEW! THE STUDENT PACKAGE **SLEEP OVER AND DISCOVER**



An uncommon evening which the students will remember for a long time!

- A night's stay in a Huttopia tent or serviced campground.
- The discovery activity "Le crépuscule des valeureux" which ends around a campfire.
- Access to hiking trails and the beach.
- **50 %** discount available on boat rental.

**\$16<sup>86</sup>** /person in a fully equipped Huttopia tent (5 pers./tent)

**\$6<sup>33</sup>** /person camping without services (6 pers./tent)

Taxes are extra. Minimum of 25 persons. Offered Sunday to Thursday, from May 12 to June 20 and September 8 to October 10, 2013.

## DISCOVERY ACTIVITIES FOR ORGANISED GROUPS

Participate in a discovery activity accompanied by a park warden. Several activities will be offered to you (walking trail, canoe, Rabaska, snowshoeing). This is a must-do rendez-vous with nature!

## DISCOUNT FOR GROUPS OF 15 PERSONS AND +

Depending on the season, **non-school groups** can benefit from a discount which can range from **10% to 30%**, based on the different aspects of their visits to the park.

Lodging, equipment rentals, guided activities... Contact us at **819-843-9855** or **parc.mont-orford@sepaq.com** and we will gladly help you plan your next outing with us which we promise will be memorable.



## DISCOVERY ACTIVITIES FOR SCHOOL GROUPS

Parc national du Mont-Orford, a place of conservation and education, is truly a laboratory in a natural setting. The beauty, integrity and natural, cultural and historical characteristics of the area have been the inspiration for activities for students at the primary and secondary level. They provide the students with a window on this world and help them to understand its fragility and to experience at first-hand the grandeur of nature...

### ➤ Guided hikes

- Vous avez dit « chevreuil » ?
- Feuilles d'érable et queue de castor
- Outing in a rabaska canoe

Level: Elementary (cycles 2, 3) and secondary

Duration: 2 hr.

Cost: \$75.00 plus taxes

### ➤ Apprenti garde-parc

For a brief moment, the students will be invited to put themselves in the place of a **park warden** and ask themselves about the ways to protect the territory.

A short talk followed by walking tour along the park to identify some of the floral and wildlife species and to apply the "Sans trace" principles.

Level: Elementary (cycles 1, 2, 3)

Duration: 1.5 hr.

Cost: \$68.75 plus taxes

### ➤ Écolo Trio

In the form of **three workshops** lasting 20 minutes each, the students explore three fascinating wildlife subjects. This is an entertaining and creative way of learning more about the inhabitants of the park and ways to protect them.

Level: Elementary (cycles 1, 2, 3)

Duration: 1 hr.

Cost: \$60.00, plus taxes

## A PARK WARDEN IN YOUR CLASS!

### ➤ Les parcs nationaux québécois : des territoires protégés

A park warden will visit your students right in their own classroom and enthusiastically share his or her enthusiasm for these protected spaces. This is a great occasion to think about the balance which is needed between both the "conservation" and the "accessibility" aspects in the mission of the parks.

Level: Secondary (cycle 1)

Duration: 75 min.

Cost: \$105.00 plus taxes



### Information and reservation for school groups

Telephone: 819-843-9855, ext. 222

E-mail: [parc.mont-orford@sepaq.com](mailto:parc.mont-orford@sepaq.com)

[www.parcquebec.com/montorford](http://www.parcquebec.com/montorford)

# EXPLORE THE PARK


## DISCOVERY PANEL

Read the discovery panels found along the trails to learn about the park's wildlife and various natural phenomena.

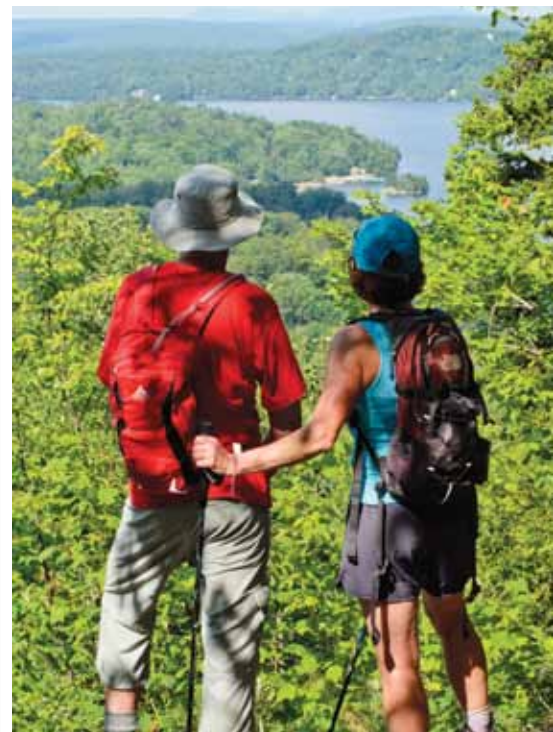
HIKING		
	DISTANCE (DURATION)	LEVEL OF DIFFICULTY
<p> <b>Étang-Fer-de-Lance trail</b> A pleasant hike through a maple grove that leads you to a lookout with breathtaking views.</p>	2.5 km (1 hr)	Easy
<p><b>Pékan trail (formerly Z)</b> Accessible in summer from the Visitors Centre through the Vieux-Camp Hut. A short climb on the Des Pins Hill giving access to a magnificent view of the Aux Cerises Pond and Mont-Orford Massif.</p>	1.1 km (30 min)	Easy
<p><b>Trois-Étangs loop (trail 2)</b> Partly borrowing the bike path, this trail meanders along three of the park's ponds: Martin, Du Milieu and De l'Ours.</p>	5.5 km (2 hrs)	Easy
<p><b>Des Crêtes trail</b> Conquer ridges and climb peaks!</p>		Difficult
<p>- Community meeting hall – Pic de l'Ours</p>	4.9 km (3 hrs)	
<p>- Pic de l'Ours – Mount Orford (Grande Coulée trail)</p>	4.1 km (2 hrs 30)	
<p><b>Mont-Chauve trail</b> This trail will lead you up the bare peak of Mount Chauve (bald mountain), nearly 600 meters high.</p>		Intermediate
<p>- Plage du lac Stukely – Carrefour du Ruisseau-Perdu</p>	1.9 km (30 min)	
<p>- Mont-Chauve loop</p>	6.5 km (3 hrs 15)	
<p><b>Ruisseau-David trail (under construction!)</b> A gentle ascent towards the summit of Mont Chauve.</p>		Intermediate
<p>- L'érablière municipal park – Summit of Mont Chauve</p>	4.2 km (1 hr 30)	
<p>- Nénuphars Road – Summit of Mont Chauve</p>	4.6 km (1 hr 45)	
<p><b>Ruisseau-des-Chênes trail</b> Follow this trail along the Des Chênes stream. A magnificent walk through the beeches that will lead you to Mont Orford.</p>		Intermediate
<p>- Route 112 – L'Entremont</p>	3.7 km (2 hrs)	
<p>- L'Entremont – Mont Orford (via 4 km trail)</p>	1.4 km (1 hr)	

With the exception of loop trails, the distances and times given are only for the outward journey. Times do not take rest stops into account. Please note that many multi-purpose trails used for cross-country skiing are also usable for hiking. For more details, please consult the general park map on pages 8 and 9.

 Pick up the detailed summer and winter trail map at the Le Cerisier Visitors Centre.

BICYCLE PATH	
	LEVEL OF DIFFICULTY
<p> <b>La Montagnarde (La Véloroute des Cantons – Route verte)</b> An over 10.4 km bikeway that passes by the Visitors Centre and crosses the park from east (Canton d'Orford) to west (Eastman).</p>	Difficile
<p><b>Multi-Purpose Trails</b> See the general park map on pages 8 and 9 for the entire cycling network.</p>	Variable

► Service in the area: **Taxi-Vélo** (bike taxi), to pick up bicycles and bags. Call 1 877 766-VÉLO (8356).



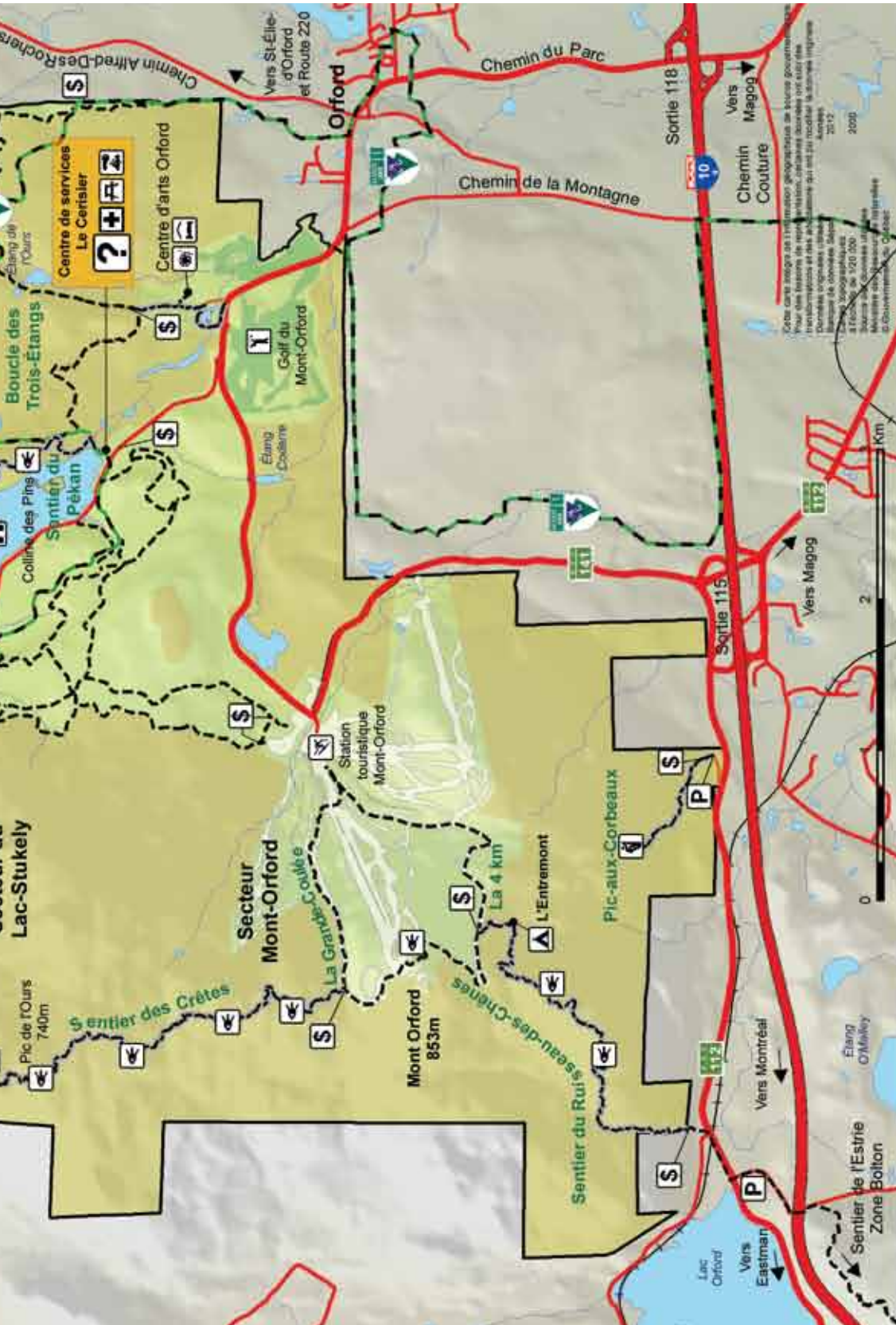
## SENTIERS DE L'ESTRIE (TRAILS)

The organization Les sentiers de l'Estrie uses the Ruisseau-David, Mont-Chauve, des Crêtes and Ruisseau-des-Chênes trails to cross the park. In addition to the main entrance in the Lac-Stukely sector, it is also possible to access these trails from Route 220 at the top of chemin de la Sucrierie (the Ruisseau-David trail) or by Route 112 from Eastman, exit 115 on Autoroute 10 (Ruisseau-des-Chênes trail). Self-registration posts make it possible to pay your entry fees at all these entry points.

## SNOWSHOE TRAILS CLOSED

Did you know that the trails used exclusively for snowshoeing in the winter are closed for hiking the rest of the year to preserve the natural environment? The surface for walking was not planned and built to support a large number of hikers. Moreover, they cross over some very fragile habitats that the snow cover protects during the colder months (wetlands, streams, fragile plants, etc.). For these reasons, we ask you to respect the periods when these trails are open and closed.





- |  |                                     |  |                        |  |                 |
|--|-------------------------------------|--|------------------------|--|-----------------|
|  | Visitors Centre                     |  | Hut                    |  | Highway         |
|  | Amphitheatre                        |  | Community room         |  | Provincial road |
|  | Inn                                 |  | Parking                |  | Main road       |
|  | Serviced campground/ Hutteria tent  |  | Bike path              |  | Back road       |
|  | Primitive campground                |  | Path                   |  | Tertiary road   |
|  | Arts centre                         |  | Backpacking trail      |  | Access road     |
|  | Cross Country Skiing Centre         |  | National park boundary |  | Railway track   |
|  | Nature Cabin                        |  | Preservation zone      |  |                 |
|  | Climbing                            |  |                        |  |                 |
|  | Horseback riding                    |  |                        |  |                 |
|  | Golf                                |  |                        |  |                 |
|  | Boat rental                         |  |                        |  |                 |
|  | Picnic                              |  |                        |  |                 |
|  | Lifeguard on duty                   |  |                        |  |                 |
|  | Observation point                   |  |                        |  |                 |
|  | Toll kiosk / self-registration post |  |                        |  |                 |
|  | First aid                           |  |                        |  |                 |
|  | Boat launching ramp                 |  |                        |  |                 |



# WINTER PLEASURES

## THE PARK UNDER THE SNOW COVER

In winter, the parc national du Mont-Orford is magnificent! Those who enjoy the outdoors and nature have everything they need! As well, in the cross-country ski and snowshoe trails, you can feel the tranquillity of the place and take advantage of it to fill your lungs with fresh air and your spirit with the beauty of the natural landscapes. Those who are most curious or most daring could discover the life of the wild things who live in this marvellous protected area. Enjoy! We wish you happy excursions and wonderful discoveries!



## IN THE LIGHT OF THE TORCHES

Take part in one of our magnificent torch-lit evenings, one of which is the *Quête de Frodor*, a **magical nocturnal experience!**

## DISCOVERIES ON SNOWSHOE

For the duration of the winter, enjoy yourself and learn more about the White-tailed deer, the coyote and the birds that spend the cold season in the park, and take a **self-guided tour** on the Pékan, Coyote and Sittelle trails.

## WINTER HIKING

As soon as the snows first begin to fall, the cross-country ski trails are closed to walkers and hikers so that they can be prepared (trail making). However, as soon as the snowshoe trails are opened, you can use them but please note that you must wear snowshoes or hiking crampons. Finally, if you would like to get on an easy winter walking trail, the La Sittelle trail (1.6 km) is accessible starting at the Le Cerisier Visitors Centre in the Lac-Stukely sector.

## KEEPING THEIR COOL ... EVEN IN WINTER!

Sometimes considered as cold-blooded animals, amphibians (frogs and salamanders) and reptiles (turtles and snakes) in Quebec are not really great fans of winter! It is hard to reproach them for ignoring the saying that suggests you must be active to appreciate the cold weather...

Actually, these animals are not really cold-blooded: their internal temperature and their metabolism (that is, the level of activity they can spend) vary depending on the exterior conditions. In summer, warming themselves in the sun, their temperatures rise and they are capable of being very active. But when it is cold, their metabolism slows gradually, making the slightest movement difficult.

So, what do they do to survive winter? Crawling or hopping all the way to Florida is out of the question, so most choose to sleep until spring ...

Most hibernate in places well sheltered from frost: deeply buried in the ground, well hidden in the bottom of a lake, etc. The strategy of Tree frogs and Wood frogs is even more astonishing! In the autumn, after the rate of sugar in their blood is dramatically increased, they bury themselves near the surface of the ground. The sugar acts as anti-freeze, preventing the interior of their cells from bursting, while the rest of their bodies are frozen like an ice cube. There is no heartbeat, no respiration... until the spring thaw. Miraculous!





## SNOW CONDITIONS WHEN YOU NEED THEM!

By signing up for the **electronic bulletin on-line**, or downloading the free **iPhone application**, you can be sure that you are always informed about our snow conditions which are updated daily. [www.sepaq.com/neige](http://www.sepaq.com/neige)

## EQUIPMENT RENTALS

- Cross-country skis
- Crampons and trekking poles
- Snowshoes
- Sledges for children

Family package available on site for cross-country skis and snowshoes.

## SEVEN CENTRES INSTEAD OF ONE!

The **season pass** and the **10-ticket daily booklet** give you access to 7 centres in the Sépaq network for the 2013-2014 season.

### Parcs nationaux:

- du Mont-Orford
- du Mont-Mégantic
- du Mont-Saint-Bruno
- du Mont-Tremblant
- d'Oka
- Station touristique Duchesnay
- Camp Mercier, réserve faunique des Laurentides

CROSS-COUNTRY SKIING RATES AND SEASON PASS	
<b>DAILY SKI ACCESS</b>	
Adult	\$13.48
Child, 6 to 17 years	\$6.74
Senior (65 years and +) or student (18 to 23 years)	\$10.22
Family, 2 adults	\$32.40
Group, adults	\$10.22
Group, children 6 to 17 years	\$5.22
Group, seniors and students	\$7.61
<b>SEASON PASS, 7 DAYS ➤ SEVEN CENTRES INSTEAD OF ONE!</b>	
Adult	\$161.77
Child, 6 to 17 years	\$80.89
Senior (65 years and +) or student (18 to 23 years)	\$121.33
Family, 2 adults	\$388.35
<b>SEASON PASS, WEEKDAYS ➤ SEVEN CENTRES INSTEAD OF ONE!</b>	
Adult	\$129.59
Senior (65 years and +) or student (18 to 23 years)	\$97.20
<b>10-TICKET DAILY BOOKLET ➤ SEVEN CENTRES INSTEAD OF ONE!</b>	
1 single rate	\$121.33

Taxes and entry fees are extra

## PATROLLERS WANTED

The Canadian Ski Patrol Service (CSPS) is proud to be able to assure the safety of skiers and snowshoers in the parc national du Mont-Orford every weekend.

Are you a person who loves to cross-country ski? Do you like to help people and would like to be part of our team of patrollers? Please don't hesitate to contact the CSPS.

1 888 562-4003 • [info@pcsquestrie.com](mailto:info@pcsquestrie.com)  
[www.pcsquestrie.com](http://www.pcsquestrie.com)



## DAY PATROLLER

If you have training in first-line interventions (ambulance driver, nurse, doctor, fireman, etc.) and you would like to become a day patroller, please don't hesitate to contact us at the Visitors Centre at **819-843-9855**.

The park has the **Ski-Vel** equipment. Persons with reduced mobility can access La Sittelle Trail.

PARC NATIONAL DU MONT-ORFORD

**YES, YOU CAN ENJOY A WINTER'S SLEEP IN THE PARK!**

NATURE CABINS	HUTS	RUSTIC CAMPING
<p>Starting at <b>\$151</b> /night/cabin*</p> <ul style="list-style-type: none"> <li>➤ 2 chambres</li> <li>➤ Salon avec foyer</li> <li>➤ 1 salle de bain</li> <li>➤ Cuisine équipée</li> </ul> <p>Intimate and warm, they can cosily accommodate 4 persons.</p>	<p>Starting at <b>\$21.00</b> night/adult*</p> <p>Easy to access and perfect for group life!</p>	<p>Starting at <b>\$34.25</b> /night/site*</p> <p>For the real lovers of the great outdoors!</p>

\*Taxes and entry fees are extra



# SCHEDULES DISCOVERY ACTIVITIES

(See descriptions on page 14. Note: Activities in French only)

## RENDEZ-VOUS AVEC UN GARDE-PARC

Would you like to learn more about the park and its secrets? Come and meet a park warden and hear a short presentation. Don't miss it!

### ► From June 22 to August 18

Stukely lake beach:

Daily from 13 h 30 to 15 h 30 (except Saturday).

Fraser lake beach:

Daily from 13 h 30 to 15 h 30 (except Monday).

## IN CASE OF RAIN

Talks in the **Lac-Stukely** sector and meetings with a park warden take place in **La Grande-Halte** community hall. Talks in the **Lac-Fraser** sector will take place in the **kitchen shelter** in the **Le Jaseur** loop.



## NATIONAL PARKS DAY

### ► Sunday, June 9, 2013

Watch for our special programming of free activities! [www.parcisquebec.com/journee](http://www.parcisquebec.com/journee)

## SPRING – LAC-STUKELY SECTOR ► MAY 18 TO 16 JUNE

DAYS	HOURS	ACTIVITIES	MEETING AREA
From May 18 to June 17	All day	<i>Les belles des bois</i>	Fer-de-Lance Trail
<b>Saturdays</b> and <b>Sundays</b> , May 18-19, 25-26, June 1-2, 8 and 15-16	10h to 11h30 13h30 to 15h30	<i>L'arcane des cerises (rabaska)</i> Ⓢ <i>L'étang Fer-de Lance</i>	Visitors Centre Fer-de-Lance lookout
<b>Saturdays</b> , May 18, 25 and June 1	19h to 20h	<i>Chants d'anoures</i>	Visitors Centre
<b>Saturdays</b> , June 8 and 15	20h30 to 21h30	<i>De l'oeuf à la tortue</i>	Stukely Amphitheatre

## SUMMER – LAC-STUKELY SECTOR ► JUNE 22 TO AUGUST 18

DAYS	HOURS	ACTIVITIES	MEETING AREA
<b>Monday</b>	10h to 11h15 20h30 to 21h30	<i>Apprenti garde-parc</i> <i>Chauve qui peut... les chauves-souris!</i>	Stukely Amphitheatre Stukely Amphitheatre
<b>Tuesday</b>	10h to 11h15 18h30 to 20h	<i>Forêt y hêtre</i> <i>Stukely, à fleur d'eau (kayak)</i> Ⓢ	Departure: Fer-de-Lance trail Stukely lake
<b>Wednesday</b>	10h to 11h30 18h30 to 19h30 20h30 to 21h30	<i>Destination : flore de l'étang (rabaska)</i> Ⓢ <i>Parlons ratons!</i> <i>Alerte verte!</i>	Visitors Centre Community hall Stukely Amphitheatre
<b>Thursday</b>	10h to 11h 18h30 to 20h 20h30 to 21h30	<i>Castor bricoleur</i> <i>Expédition à la brunante (rabaska)</i> Ⓢ <i>Chouette soirée d'Orford</i>	Stukely lake Visitors Centre Stukely Amphitheatre
<b>Friday</b>	10h to 11h30	<i>Destination : flore de l'étang (rabaska)</i> Ⓢ	Visitors Centre
<b>Saturday</b>	9h30 to 10h30 11h30 to 12h 13h30 to 14h 18h30 to 20h 20h30 to 21h30	<i>Parlons ratons!</i> <i>Les secrets du professeur PSIE</i> <i>Les secrets du professeur PSIE</i> <i>Stukely, à fleur d'eau (kayak)</i> Ⓢ <i>Qui croira verra!</i>	Community hall Stukely lake Stukely lake Stukely lake Community hall
<b>Sunday</b>	10h to 11h30 18h 30 to 20h 20h30 to 21h30	<i>Vous avez dit « chevreuil »?</i> <i>Expédition à la brunante (rabaska)</i> Ⓢ <i>D'une époque à l'autre</i>	Departure: Fer-de-Lance trail Visitors Centre Stukely Amphitheatre

## SUMMER – LAC-FRASER SECTOR ► JUNE 22 TO AUGUST 18

DAYS	HOURS	ACTIVITIES	MEETING AREA
<b>Monday</b>	20h to 21h	<i>Chouette soirée d'Orford</i>	Étang de la Hutte
<b>Tuesday</b>	18h to 19h 20h30 to 21h30	<i>Parlons ratons!</i> <i>Chauve qui peut... les chauves-souris!</i>	Kitchen shelter « A » Fraser Amphitheatre
<b>Wednesday</b>	20h30 to 21h30	<i>Qui croira verra!</i>	Étang de la Hutte
<b>Thursday</b>	20h30 to 22h15	<i>Safari de nuit</i> Ⓢ	Kitchen shelter « A »
<b>Saturday</b>	16h30 to 17h30 20h30 to 21h30	<i>Castor et compagnie</i> <i>Alerte verte!</i>	Étang de la Hutte Fraser Amphitheatre
<b>Sunday</b>	10h30 to 11h30 13h30 to 14h	<i>Parcours creuse-ciboulot</i> <i>Les secrets du professeur PSIE</i>	Kitchen shelter « A » Fraser lake

Ⓢ Details about rates and reservation methods on page 14.

► NOTE: Children must be accompanied by an adult for all activities.



## END OF SUMMER – LAC-STUKELY SECTOR ► AUGUST 24 TO SEPTEMBER 2

DAYS	HOURS	ACTIVITIES	MEETING AREA
<b>Saturdays</b> August 24 and 31	10h30 to 12h30	<i>L'étang Fer-de-Lance</i>	Fer-de-Lance lookout
	14h30 to 16h	<i>L'arcane des Cerises (rabaska)</i> Ⓢ	Visitors Centre
	20h to 21h	<i>Alerte verte!</i>	Stukely Amphitheatre
<b>Sundays</b> August 25 and Sept. 1	10h to 11h30	<i>L'arcane des Cerises (rabaska)</i> Ⓢ	Visitors Centre
	13h30 to 15h30	<i>Rendez-vous avec un garde-parc</i>	Stukely lake
<b>Sunday</b> , Sept. 1	20h to 21h	<i>De l'oeuf à la tortue</i>	Stukely Amphitheatre
<b>Monday</b> , Sept. 2	10h to 11h30	<i>L'arcane des Cerises (rabaska)</i> Ⓢ	Visitors Centre
	13h30 to 15h30	<i>Rendez-vous avec un garde-parc</i>	Visitors Centre

## FLAMBÉE DES COULEURS 2013!

The fall season is by far the best time of the year to walk in the woods. The temperature is cooler and more comfortable. And the colours are intense! On the ridges and in the undergrowth, the blazing colours that mark this time of year are a feast for the eyes. Choose your trail and take advantage of this celebration of colours!

► **Weekends:** September 28-29 and October 5-6 and 12-13-14.

## AUTUMN – LAC-STUKELY SECTOR ► SEPTEMBER 7 TO OCTOBER 14

DAYS	HOURS	ACTIVITIES	MEETING AREA
<b>Weekends</b> September 7-8, 14-15, 21-22, 28-29 October 5-6 and 12-13-14	10h30 to 12h30	<i>L'étang Fer-de-Lance</i>	Fer-de-Lance lookout
	13h to 14h30	<i>L'arcane des Cerises (rabaska)</i> Ⓢ	Visitors Centre
	14h to 16h	<i>Rendez-vous avec l'automne</i>	Visitors Centre

## RABASKA ON THE AUX CERISES POND



Enjoy our new excursions

- Expédition à la brunante
- Destination : flore de l'étang

Reservation required

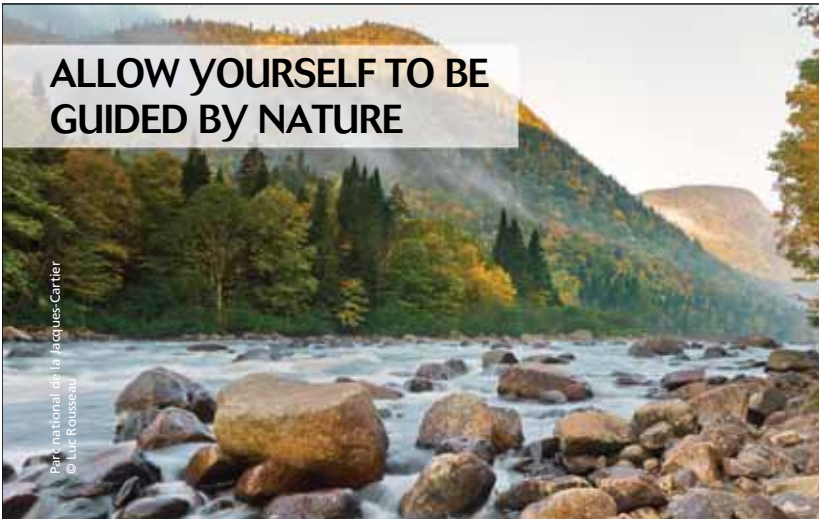
\$878 /adult

\$439 /children  
aged 6 to 17

Taxes and entry fees  
are extra



## ALLOW YOURSELF TO BE GUIDED BY NATURE



Parc national de la Jacques-Cartier  
© Luc Rousseau

The outfitters, members of Aventure Écotourisme Québec, in collaboration with the Sépaq, offer you several stays and guided activities specially conceived to have you discover exceptional natural spaces.

AEQ groups together more than one hundred producers in adventure tourism and in ecotourism that join forces to offer you high-quality products.

Consult the Association's website for planning your guided activities in Sépaq's national parks.



[www.quebecadventure.ca](http://www.quebecadventure.ca)



# DESCRIPTION DISCOVERY ACTIVITIES

(see schedules on pages 12 and 13)

## Les belles des bois

This spring, try the Étang-Fer-de-Lance trail and take part in an independent rally about the marvellous world of spring plants.

## CHILDREN'S ACTIVITIES

### Apprenti garde-parc (children aged 6 to 12)

Become a park warden for a short time. Can you keep watch over the park?

### Castor bricoleur

Pretend that you are a beaver as you build a dam and lodge. Learn all about this architect of the pond... a truly amazing animal.

### Les secrets du professeur PSIE **NEW!** (Puppet theatre)

Come and meet Professor PSIE. He is at once scientist, explorer and adventurer, and he will help you discover the park and its extraordinary treasures!

## HIKES

### Chants d'anoures **NEW!**

Do you sing when you are courting? This is what the frogs do in an impressive spring concert. Participate in this mesmerizing evening and have a front-row seat to discover for yourself.

### Parcours creuse-ciboulot

Head down a many-detour path in a forest that raises some surprising questions. Self guided activity lasting approximately 45 minutes.

### Forêt y hêtre

Follow the guide under a forest canopy of maple and beech trees to discover what is hiding there.

### Safari de nuit

A mysterious night time hike that will awaken all of your senses. Be prepared for a mystery stroll...

**Registration required** Cost: \$5.27/adult, \$2.64/children aged 6 to 17 (Not recommended for children 5 and under). Taxes and entry fees are extra.

### Castor et compagnie

Step into the king of the pond's intriguing world on this short hike. Perhaps he will even make an appearance...

## Vous avez dit « chevreuil »?

In the space of some 90 minutes you can live out the four seasons of this majestic animal.

## WATER ACTIVITIES\*

### L'arcane des cerises (rabaska)

In a rabaska canoe, paddle up through the heart of the valley of the Aux Cerises pond. A park warden will enlighten you about the mysteries revealed by this body of water.

### Destination : flore de l'étang (rabaska) **NEW!**

From carnivorous plants to beautifully flowering and scented shrubs, this guided excursion by rabaska canoe on the Aux Cerises pond will both surprise and delight you!

### Expédition à la brunante (rabaska) **NEW!**

Take advantage of the dusk, the time when wildlife starts to move about, for an exploratory outing by rabaska canoe on the Aux Cerises pond. A magical time to observe!

### Stukely, à fleur d'eau (kayak) **NEW!**

Explore the beautiful shores of Stukely lake by kayak, accompanied by a park warden. Equipment provided.

\* **Registration required** Cost: \$8.78 /adult, \$4.39 /child, aged 6 to 17 yrs. (Not recommended for children 5 and under). Taxes and entry fees are extra.

## PRESENTATIONS

### De l'oeuf à la tortue

Turtles in the park? Of course! This illustrated presentation will teach you all about turtles and their egg-laying season in the park

### D'une époque à l'autre

Discover the history of this rich area. An illustrated presentation... like an open book.

### Alerte verte!

An illustrated presentation that explores fragile plant and wildlife species found in the park. These are treasures to be discovered and protected!

### Chauve qui peut... les chauves-souris!

Did you know that the park harbours several species of bats? Get to know these fascinating creatures better and learn to appreciate them.

## Qui croira verra!

### (stories told around a campfire)

Settle in by the light of the campfire in the middle of the forest to listen to stories of the past, far from prying eyes...

### Chouette soirée d'Orford

Owls and birds of prey that are active at night and incredibly well adapted!

- Lac-Stukely sector: Illustrated presentation in the amphitheatre.
- Lac-Fraser sector: We talk about owls around the camp fire.

## POSTED ACTIVITIES

### Parlons ratons!

Would you have questions to ask or like to tell a story or even learn more about this omnipresent animal in the campground area? Don't hesitate to come and meet the park warden.

### L'étang Fer-de-Lance

From the lookout overlooking this pond, a park warden will point out all of the plants and wildlife that make this area their home. Don't forget your binoculars!

## Payment and reservation methods

### Lac-Stukely Sector:

Le Cerisier Visitors Centre – 819-843-9855

### Lac-Fraser Sector:

Information Kiosk – 819-843-0908



# ACCOMMODATION RATES AND USEFUL INFORMATION



## CAMPING AND ACCOMMODATION TYPES

Campsite, without service	\$28.50
Campsite, without service Camping Plus	\$30.00
Campsite, with 1 service (electricity)	\$35.25
Campsite, with 2 services (water + electricity)	\$37.75
Campsite, with 3 services (water, electricity 30 amp., sewage)	\$42.00
Campsite, with 3 services (water, electricity 50 amp., sewage)	\$44.00
Site bicycle-camping	\$22.25
Primitive camping Vallonnier (2 bundles of wood included)	\$34.25
Primitive camping Entremont (summer only - prohibited campfire)	\$22.25
Summer hut	\$20.25/adult
Winter hut	\$21.00/adult
Ready-to-camp (trailer tent)	From \$87.00
Ready-to-camp (Huttopia tent)	From \$99.00
Nature cabin	From \$151.00
Modification fees	\$6.25

Taxes and entry fees are extra

## SERVICES AND USEFUL INFORMATION

- 2 Beaches with monitored swimming (Stukely and Fraser)
- Convenience store in Lac-Stukely sector (Community hall or Visitors Centre according to the season)
- Convenience store in Lac-Fraser sector (Swimmers' pavilion)
- Restaurant – Dairy bar in Lac-Stukely sector (plage Stukely)
- Restaurant – Dairy bar in Lac-Fraser sector (Swimmers' pavilion)
- 466 serviced campsites
- Ready-to-camp: 23 Huttopia tents – 2 trailer tents
- 21 Platforms for primitive camping
- 5 Nature cabins
- 3 Huts

## BICYCLE CAMPING

A few camping sites are available **without prior reservation** for the evening. Stop and visit us!



Huttopia

## A PARCS QUÉBEC'S EXCLUSIVE!

Discover the **Huttopia tent**, a simple and comfortable way to discover the joys of camping without all the lugging.

Each unit includes:

- two big beds
- supplementary heating and lighting
- a propane-operated warming tray and a mini-fridge
- everything you need to prepare meals

### 2013 SEASON

80 new tents

### 2 new destinations:

- Îles-de-Boucherville
- Lac-Témiscouata

LOW SEASON <sup>(1)</sup>

\$99 /night

HIGH SEASON <sup>(2)</sup>

\$116 /night

Capacity of 5 people (max. 4 adults)

(1) From Sunday to Thursday until June 20, 2013 and from September 8, 2013.

(2) Fridays, Saturdays, holidays and every day from June 21, 2013 to September 7, 2013. Taxes and entrance fee not included

Online reservation: [parksquebec.com/huttopia](http://parksquebec.com/huttopia)



# RATES AND NAUTICAL ACTIVITIES

## MORNING ON THE WATER: TAKE ADVANTAGE OF A 50% DISCOUNT.

On presentation of your park stay invoice, obtain a **50% discount** on a one-hour boat rental. Must be carried out before 11 h.

*Only one discount is offered per reservation.*

## GEESE ON THE BEACH!

The phenomenon is now better known, Canada Geese are increasingly moving into our regions. The park, lakes and ponds offer some of their preferred spots. This bird is essentially looking for open spaces (with grass) along a shoreline or bank to food feed itself.

To come up with the right solution to some of the more disagreeable aspects of their presence (large quantities of droppings on the beaches and the picnic areas) the park has adopted diverse strategies. Here are some examples of the actions which have been implemented since the spring of 2011: installation of fences on the beaches at Stukely and Fraser lakes, less frequent mowing of the grass, scaring off and rigorous monitoring of the geese nesting sites.

### Did you know that...

The male goose eats up to 1.8 kg (4 lb) of grass per day and produces up to 0.9 kg (2 lb) of fecal material daily.

*Help us by not feeding the birds!*

## PARKING

	DAILY	SEASON STICKER
Automobile	\$9.57	\$57.40
Motorbike	\$5.22	\$31.31
RV or trailer	\$9.57	\$57.40
Minibus	\$19.13	N/A
Bus	\$38.27	N/A

**Note:** In force from June 15 to September 2, 2013. The parking sticker is valid for the summer season and is accepted in all parks where parking fees are collected.

Taxes and entry fees are extra

## EQUIPMENT RENTALS

	1 HOUR	4 HOURS	DAY
Pedal boat (2 seater)	\$18.25	\$36.25	\$51.50
Pedal boat (4 seater)	\$23.75	\$41.75	\$59.75
Canoe	\$15.25	\$30.25	\$43.00
Solo Kayak	\$13.50	\$27.00	\$38.50
Tandem Kayak	\$16.50	\$32.75	\$46.50
Stand-up surfboard with paddle	\$13.50	\$27.00	\$38.50
Rowboat (electric motor required)	\$13.75	\$27.50	\$40.25

**Equipment rentals: Le Cerisier Visitors Centre and the lake Sukely and Fraser beaches. Identity with photo required.**

Taxes and entry fees are extra

## THE PARK IS ALSO...

Other than the presence of the **Sépaq**, three other partners, which are completely independent of each other when it comes to managing their respective activities, are also on the territory of the parc national du Mont-Orford. **The Corporation Ski et Golf du Mont-Orford** manages alpine skiing and golf, the **Centre d'arts Orford** operates the activities of the internationally recognized academy of music and **Jouvence** directs the prestigious resort centre.

## A SELF-GUIDED ECO TOUR!

**Explore the Aux Cerises pond** by canoe or kayak by following the self-guided ecological plan. Get a guidebook at the Visitors Centre and follow the numbered buoys.



### Photo credits

Cover: Mathieu Dupuis | Sentier du Pékan

Page 4: Roxane S. Bernard | Cordulie ténébreuse

Frédéric Dagenais, Mathieu Dupuis, Jean-Philippe Genest, Jean-Pierre Huard, Denis Houle, Claudia Lascelles, Marc Loiselle, Marilyne Marcoux, Adeline Marquis, Manon Paquette, Maryse Plante, Shutterstock

Legal deposit 2013

Library and Archives Canada

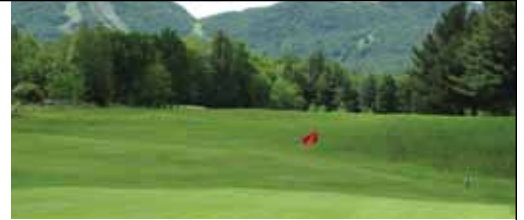
ISSN 1929-0195 (Print)

ISSN 1929-0209 (Online)



LOOKING FORWARD  
TO SEE YOU AGAIN

**LIMITLESS  
POSSIBILITIES!**



1 866 673-6731 • orford.com | **ORFORD**

89 rooms and 40 multi-purpose rooms.  
Dining room, Bistro, Relaxation areas.

**A huge playground for your group meetings.**



**Auberge du Centre d'arts Orford Inn**

[arts-orford.org](http://arts-orford.org)

1-800-567-6155 | [auberge@arts-orford.org](mailto:auberge@arts-orford.org)  
3165, chemin du Parc, Orford



**PARC NATIONAL  
DU MONT-ORFORD**

**DISCOVER 3 OTHER QUEBEC  
NATIONAL PARKS IN THE  
EASTERN TOWNSHIPS!**



PARCS QUÉBEC

**Yamaska • Mont-Mégantic • Frontenac**

**PARC NATIONAL DU MONT-ORFORD**

3321, chemin du parc  
Canton d'Orford (Québec) J1X 7A2

Information: 819-843-9855  
Reservation: 1-800-665-6527  
On-line: [www.sepaq.com/reservation](http://www.sepaq.com/reservation)

[www.parcsquebec.com/montorford](http://www.parcsquebec.com/montorford)

**INFOLETTER**

Receive our news regularly  
by adding your name to our  
mailing list. Register at:  
[parc.mont-orford@sepaq.com](mailto:parc.mont-orford@sepaq.com)



[www.facebook.com/ParcNationalMontOrford](http://www.facebook.com/ParcNationalMontOrford)



@ParcMontOrford

91 other models in-store

**RIOT**  
kayaks

**SAIL**



This document has been printed entirely on recycled paper made in Québec, which contains 100% postconsumer fibres and is produced without chlorine. The inks used for this production contain vegetable oils.