

NA
747
M6A53
1978
V. 9S
CAR

ANALYSE DU MACRO-INVENTAIRE MONTRÉALAIS
ENSEMBLE SAINT-ANTOINE

9s

4230-50-30

Code

SUJET

MONTRÉAL - ST-JOSEPH/ST-ANDRÉ/ST-GEORGES
- INV. ARCHIT. (9) - SUPPL. *

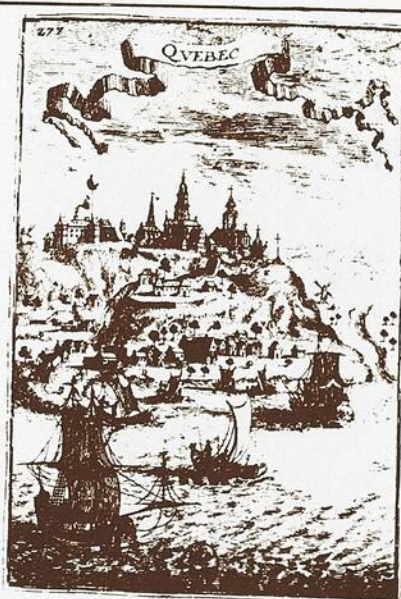
SECTEUR: RM

Unité: DIRECTION REGIONALE MONTRÉAL - DEPOT DE DOCUMENTS

ETHNOTECH
5478 1ère avenue, charlesbourg, G1H-6T7
INC.

recherche et mise en valeur du patrimoine





Bibliothèque Nationale du Québec

Ville de Montréal après 1892.
A.N.M.
N.S.V.M. - 2 1978.

ANALYSE DU MACRO-INVENTAIRE MONTRÉALAIS
ENSEMBLE SAINT-ANTOINE

95

Quartiers Saint-Joseph, Saint-André
et
Saint-Georges

VILLE DE MONTRÉAL

ET

MINISTÈRE DES AFFAIRES CULTURELLES



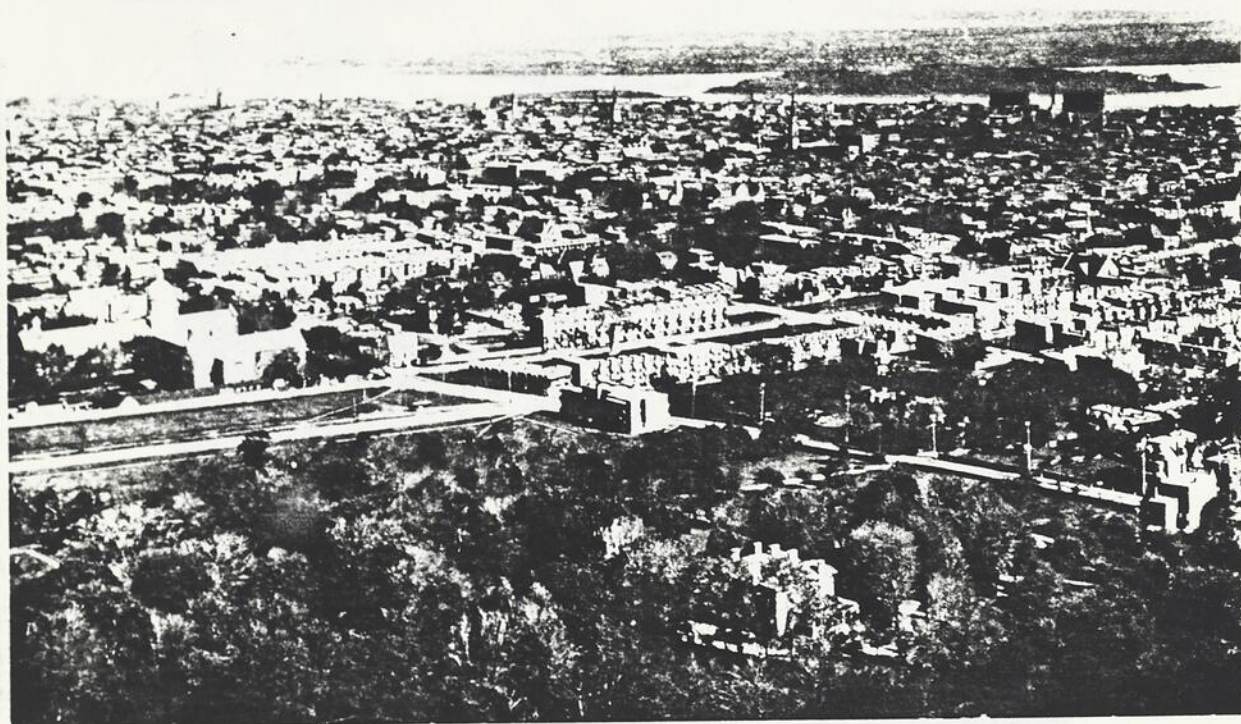
MONTRÉAL

JUN 1982



PHOTO

Vue du Mont-Royal vers 1900-10.
A.M.M.
S.U.V.M. - Z 1578.

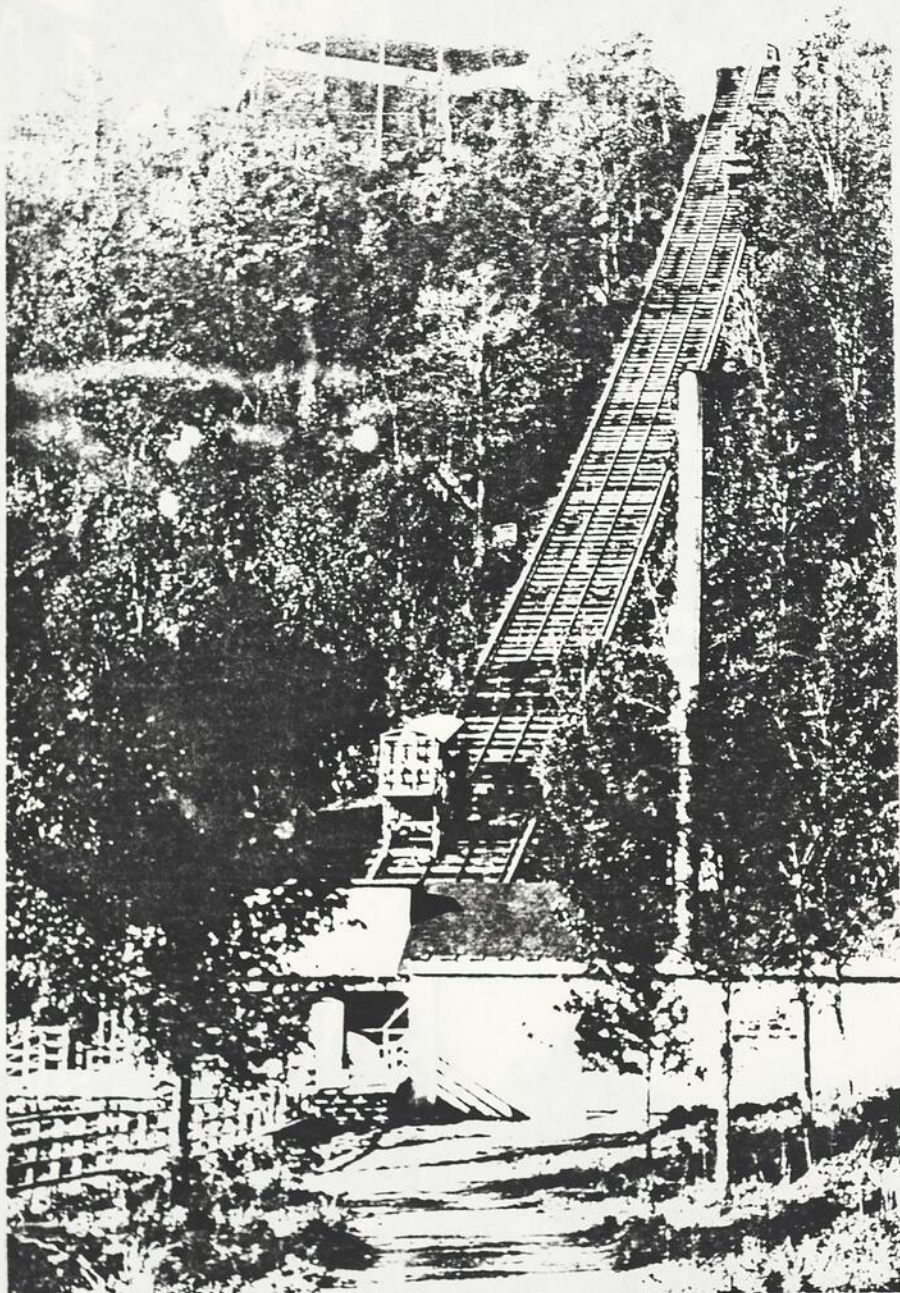


Vue du Mont-Royal après 1892.
A.M.M.
S.U.V.M. - Z 1578.

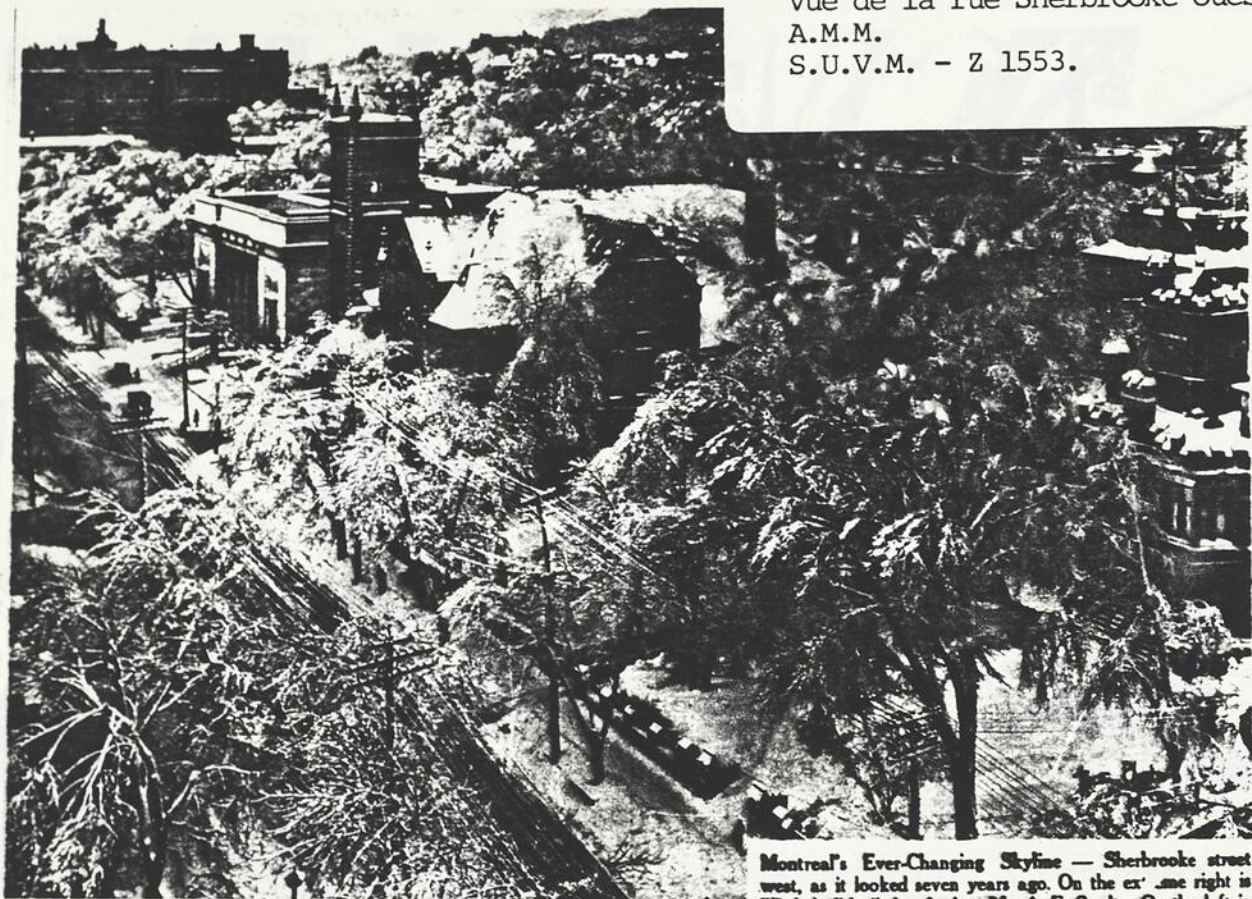


MONTREAL FROM MOUNT ROYAL.

Le parc Mont-Royal en 1910.
In: Lost Montreal, p. 165.
S.U.V.M. - 38745.



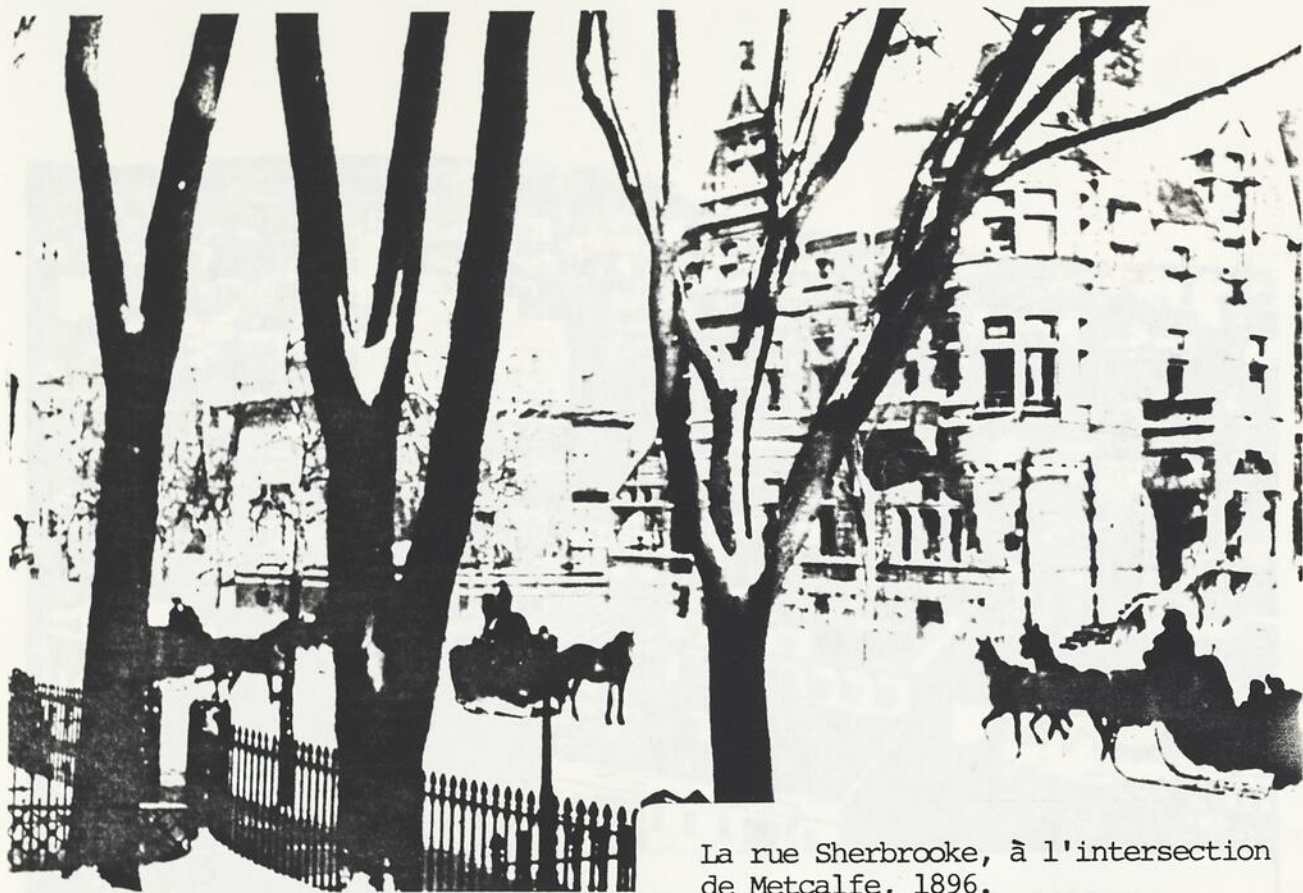
Vue de la rue Sherbrooke ouest.
A.M.M.
S.U.V.M. - Z 1553.



Montreal's Ever-Changing Skyline — Sherbrooke street west, as it looked seven years ago. On the extreme right is

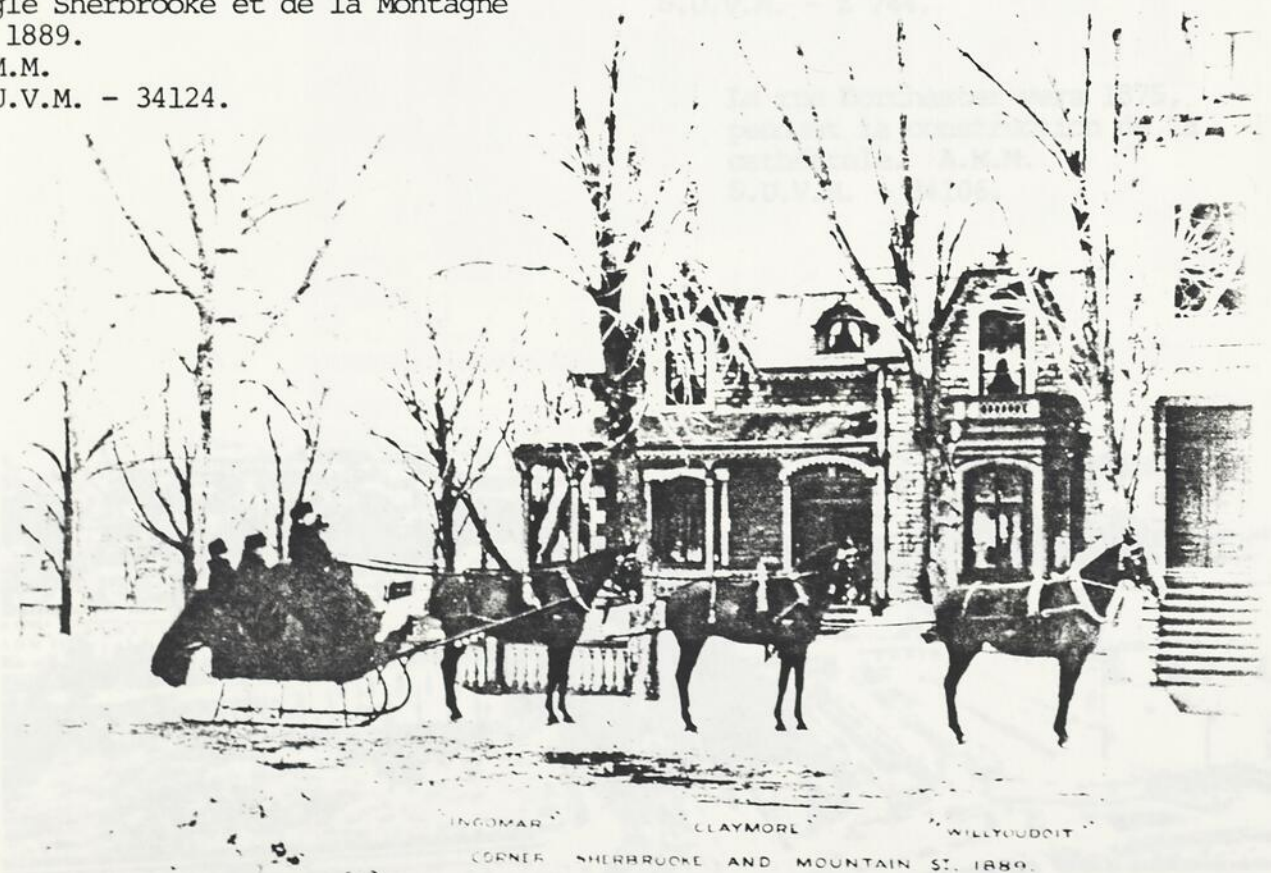


La rue Sherbrooke, mars 1896.
A.M.M.
S.U.V.M. - 34127.



La rue Sherbrooke, à l'intersection
de Metcalfe, 1896.
In: Lost Montreal, p. 38.
S.U.V.M. - 38720.

Angle Sherbrooke et de la Montagne
en 1889.
A.M.M.
S.U.V.M. - 34124.

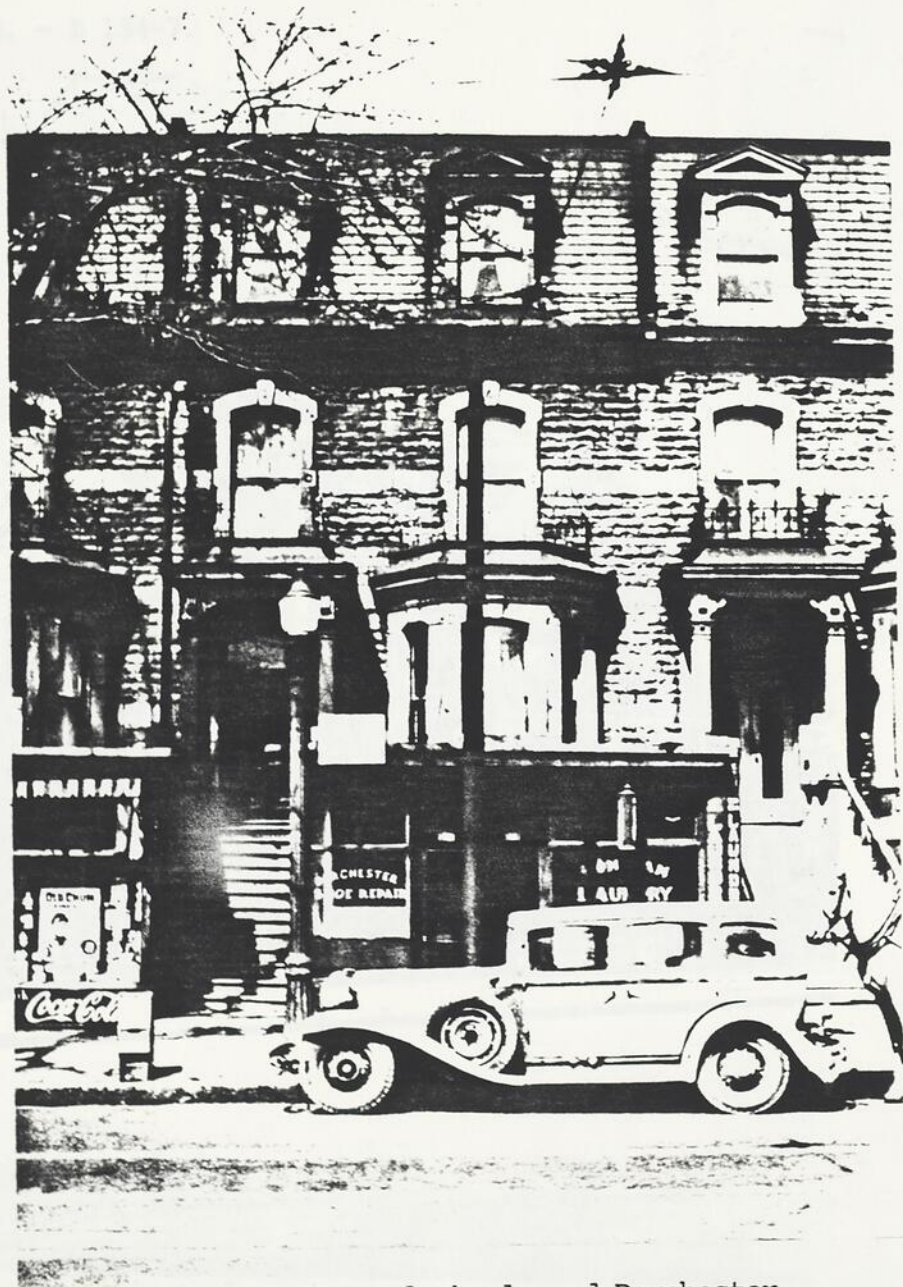




Le centre-ville vue de l'édifice
Alfred en 1958.
A.M.M.
S.U.V.M. - Z 744.

La rue Dorchester vers 1875,
pendant la construction de la
cathédrale. A.M.M.
S.U.V.M. - 34106.





Sur le boulevard Dorchester
vers 1945.
A.M.M. - S.U.V.M. - 38784.

La rue de l'inspecteur avila
Saint-Jacques.
A.M.M.
S.U.V.M. - Z 19.

La rue Dorchester entre du Fort
et Seymour.
A.M.M.
S.U.V.M. - Z 184-7.



La rue de l'Inspecteur angle
Saint-Jacques.

A.M.M.

S.U.V.M. - Z 19.



Le square Dominion.

A.M.M.

S.U.V.M. - 34094.



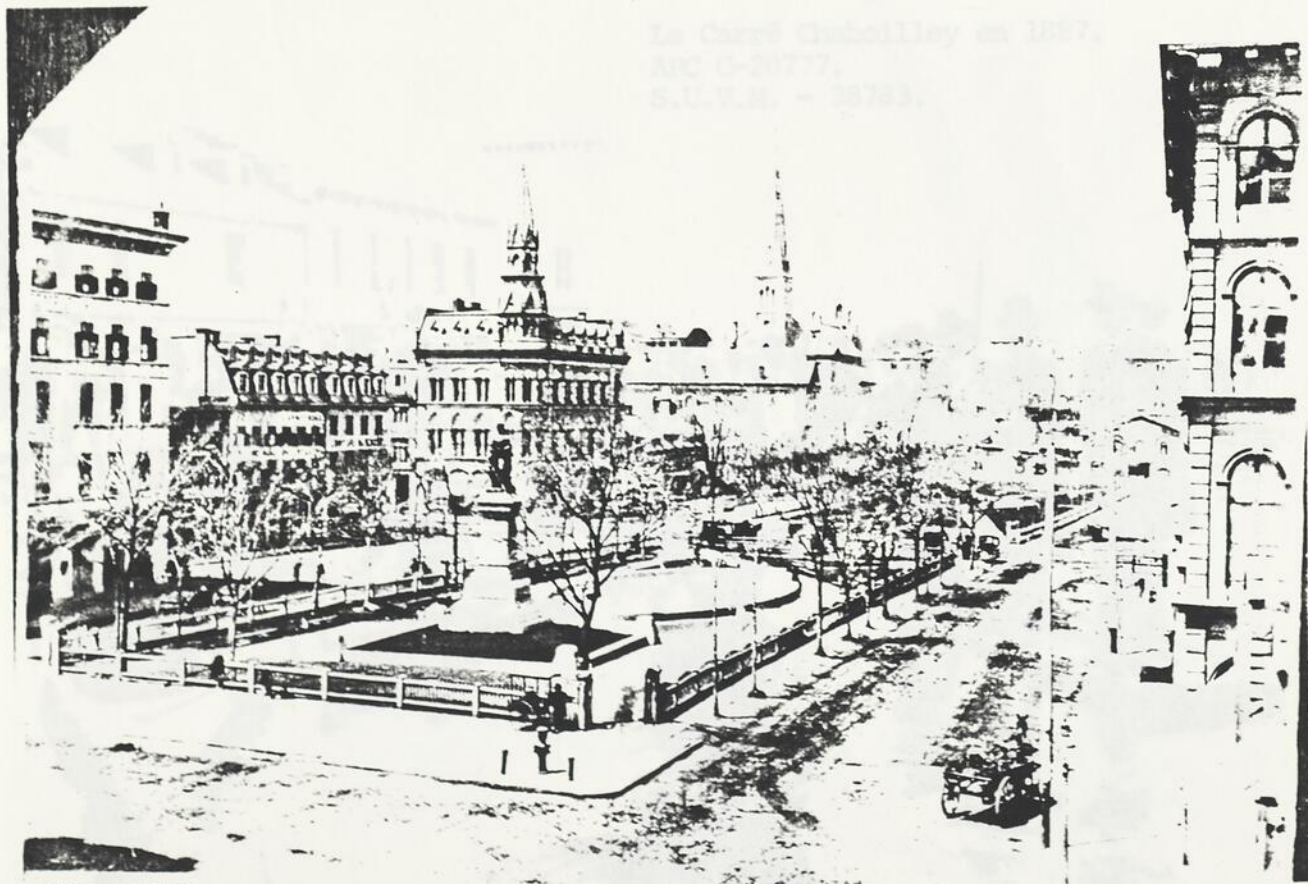
Le square Dominion.
A.M.M.
S.U.V.M. - D 179-13.



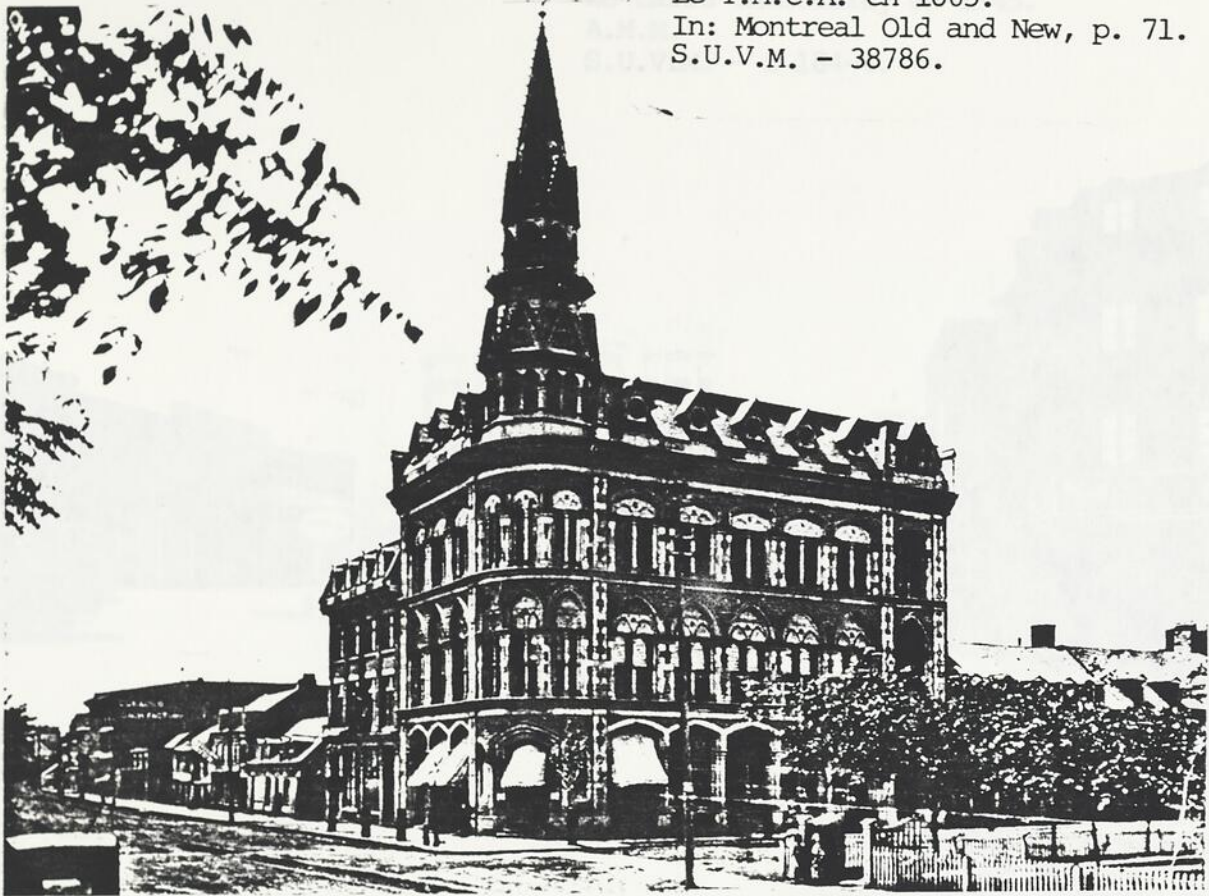
LE SQUARE DOMINION

Photo. Laprés et Lavergue, 360 rue

Le square Victoria.
A.M.M.
S.U.V.M. - 78774.



Le Y.M.C.A. en 1865.
In: Montreal Old and New, p. 71.
S.U.V.M. - 38786.



Le Carré Chaboilley en 1887.
APC C-20777.
S.U.V.M. - 38783.



Le Carré Chaboilley en 1945.

A.M.M.

S.U.V.M. - Z 184-4.



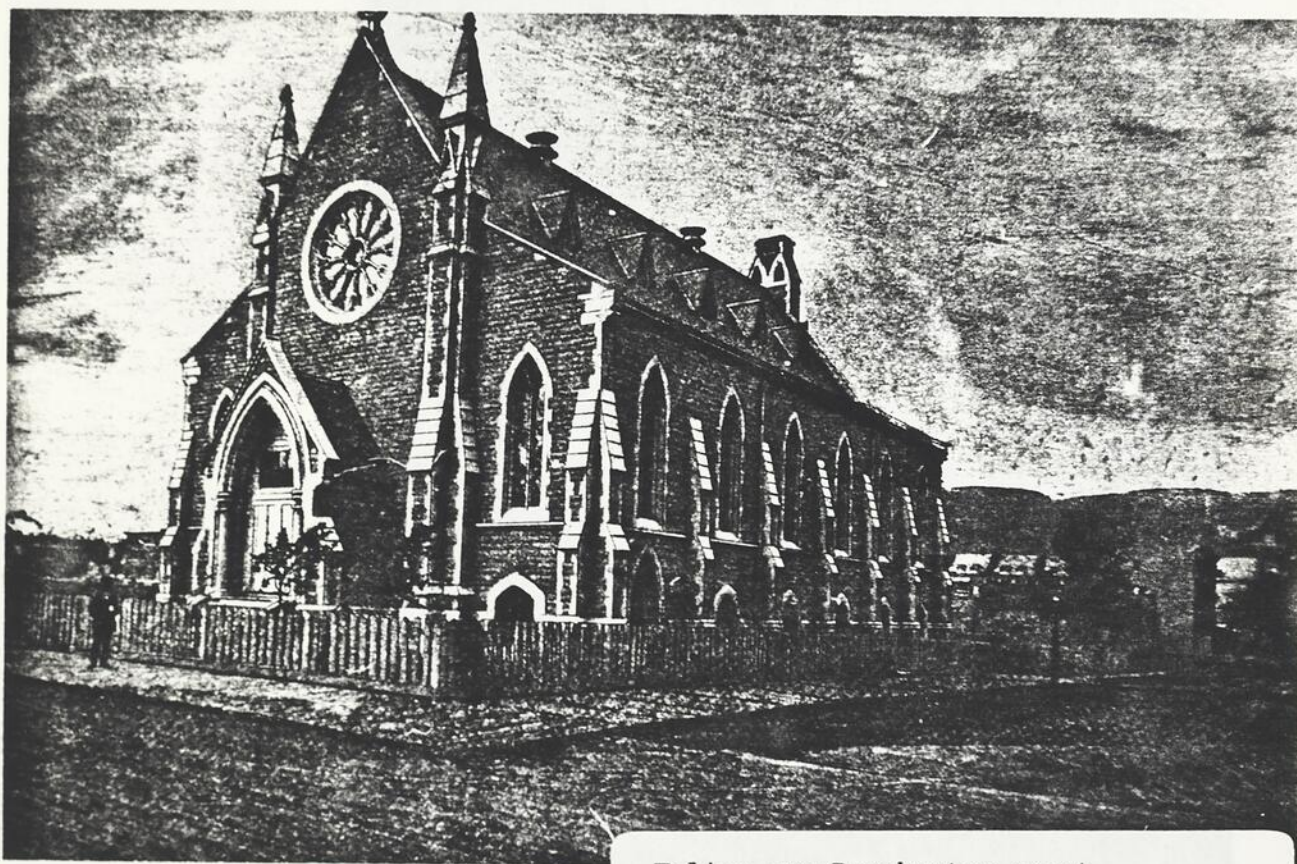
Rue Peel au sud de Burnside.

A.M.M.

S.U.V.M. - Z 5.

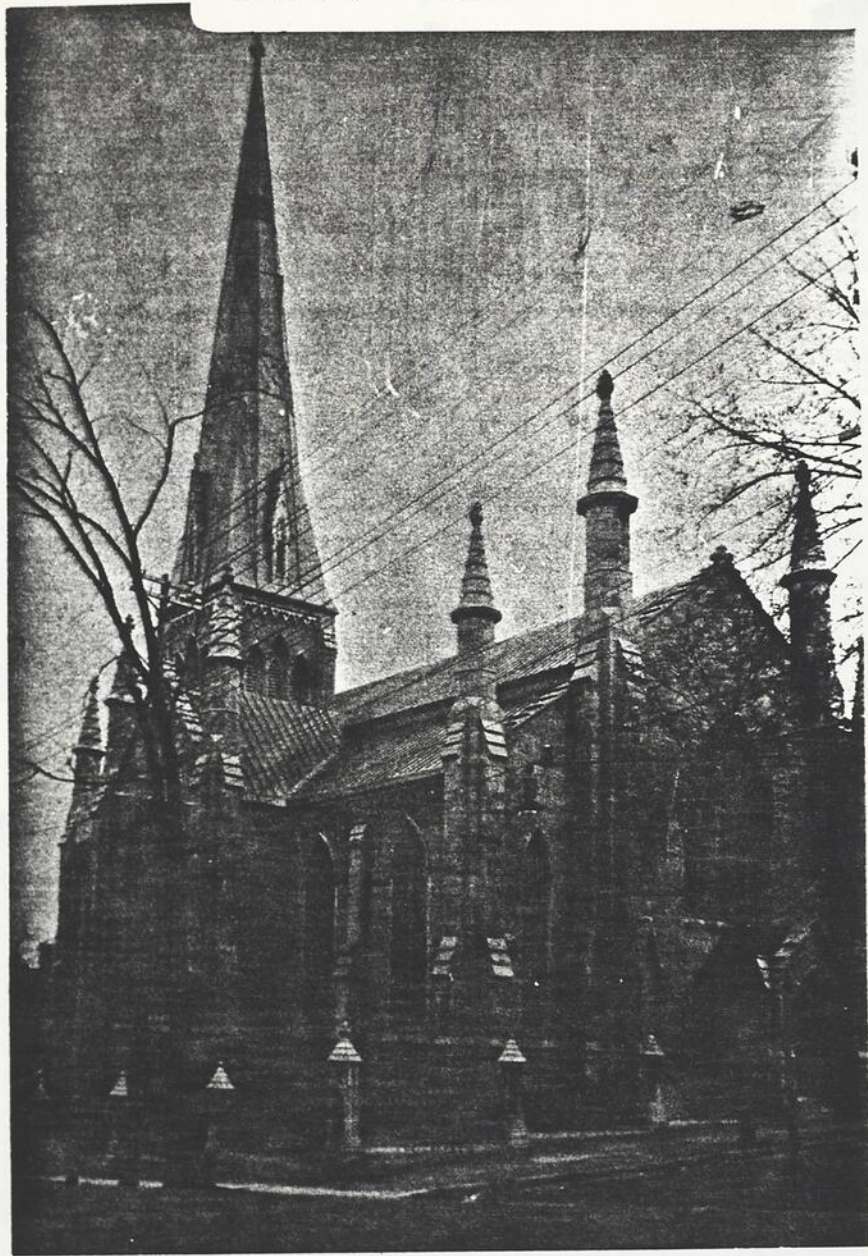


L'Eglise Saint-Amand (angle Legue-
Chabre et Beaver Hill)
In: Coll. E.Z. Massicotte, 1-57-A
S.U.V.M. - 39205.



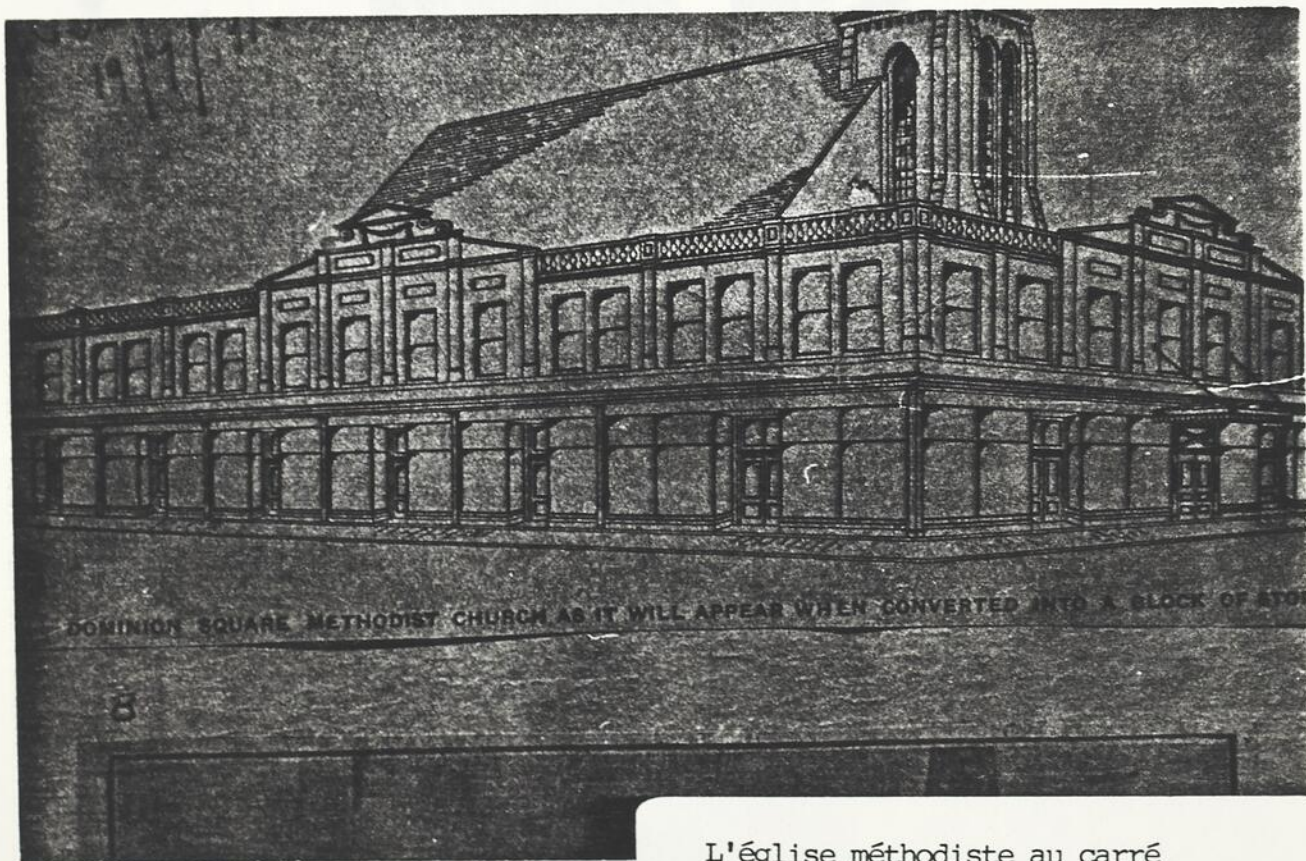
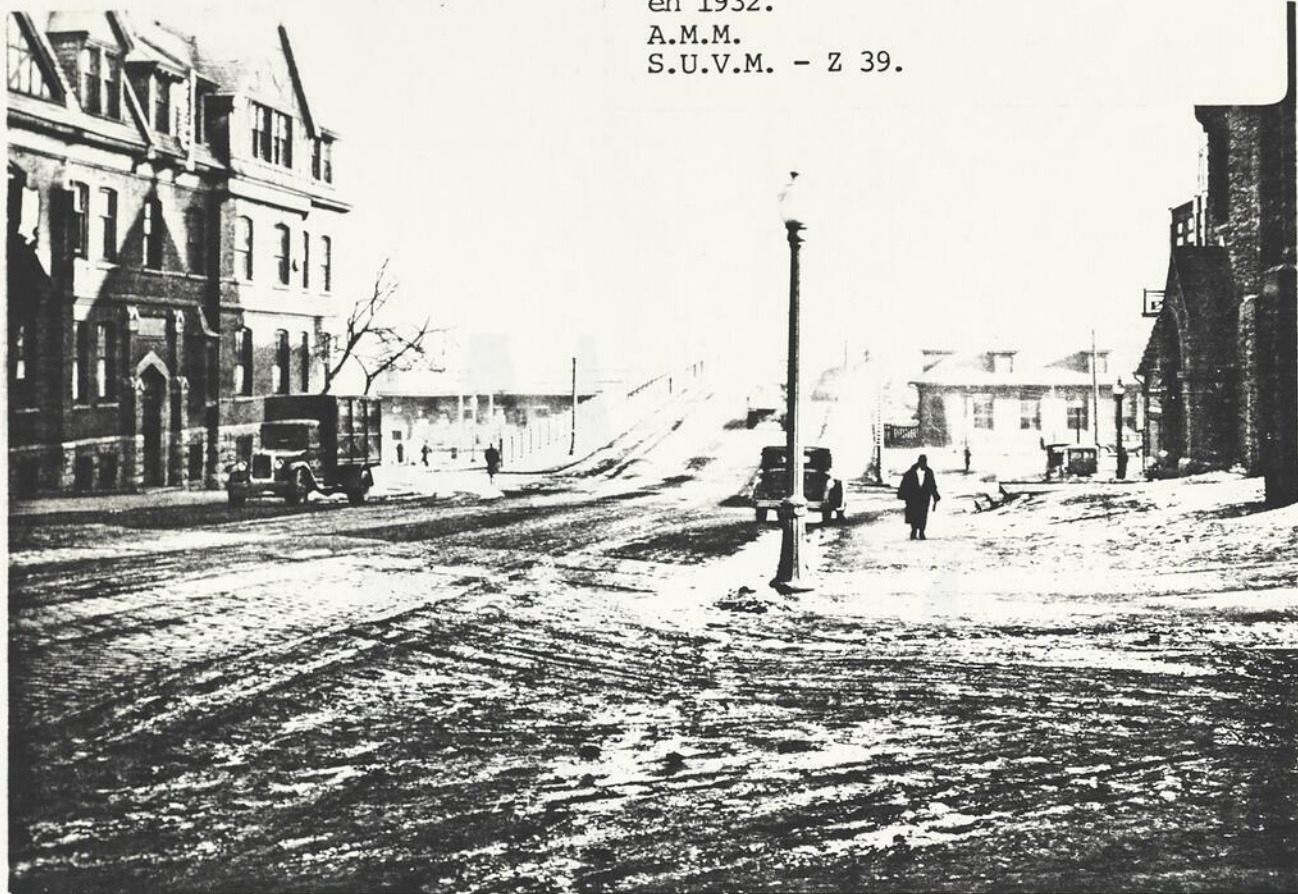
Eglise sur Dorchester ouest.
In: Coll. E.Z. Massicotte, 2-69-B.
S.U.V.M. - 39213.

Vladimir Gay (après du C.N.R.S.)
en 1922.
L.M.N.
L'Église Saint-André (angle Lagau-
chetière et Beaver Hall)
In: Coll. E.Z. Massicotte, 1-57-A
S.U.V.M. - 39205.



L'Église méthodiste au nord
ouest. In: Coll. E.Z.
Massicotte, 1-57-A.
S.U.V.M. - 39205.

Viaduc rue Guy (près du C.N.R.)
en 1932.
A.M.M.
S.U.V.M. - Z 39.



L'église méthodiste au carré
Dominion. In: Coll. E.Z.
Massicotte, 2-39-A.
S.U.V.M. - 39209.

Library of the University of Toronto
S. U. V. M. - Z 184-11

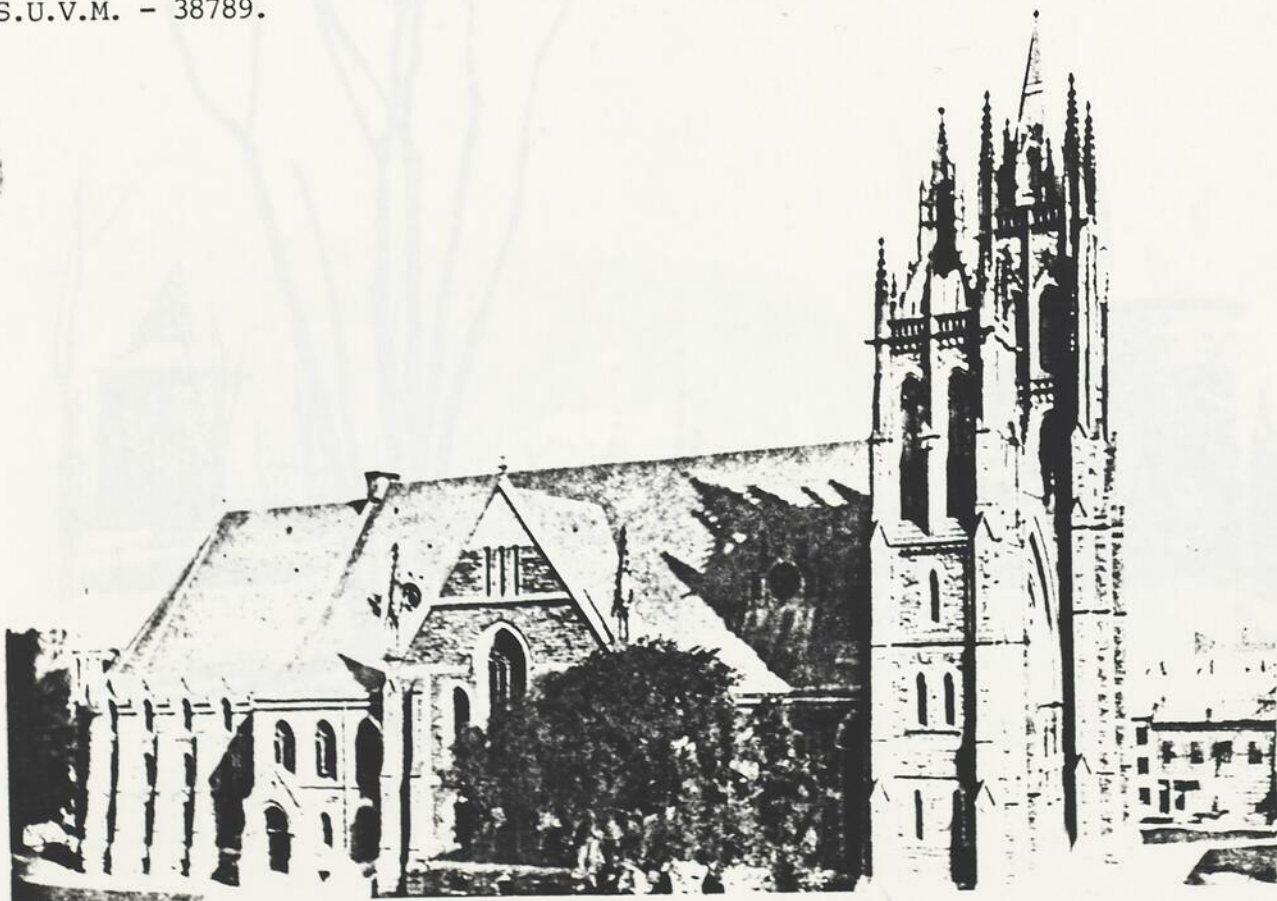


Knox Crescent Presbyterian
Church en 1945.
A.M.M.
S.U.V.M. - Z 184-11

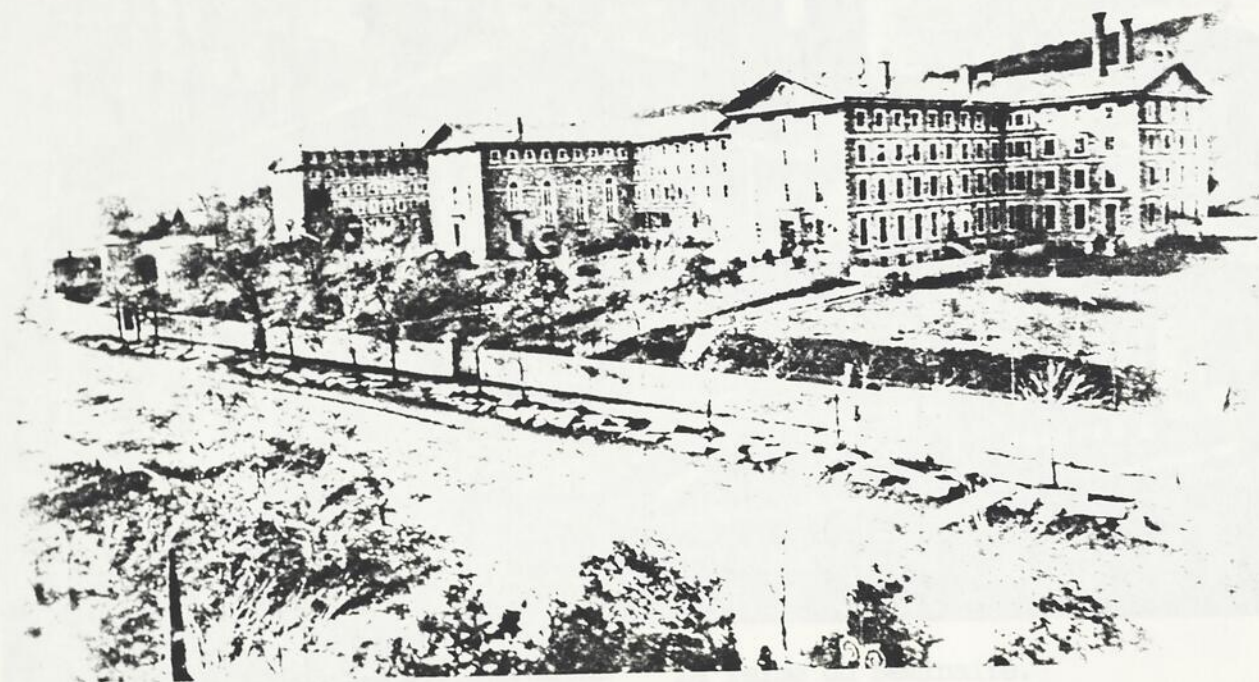
Eglise méthodiste Saint-James.
A.M.M.
S.U.V.M. - Z 440.



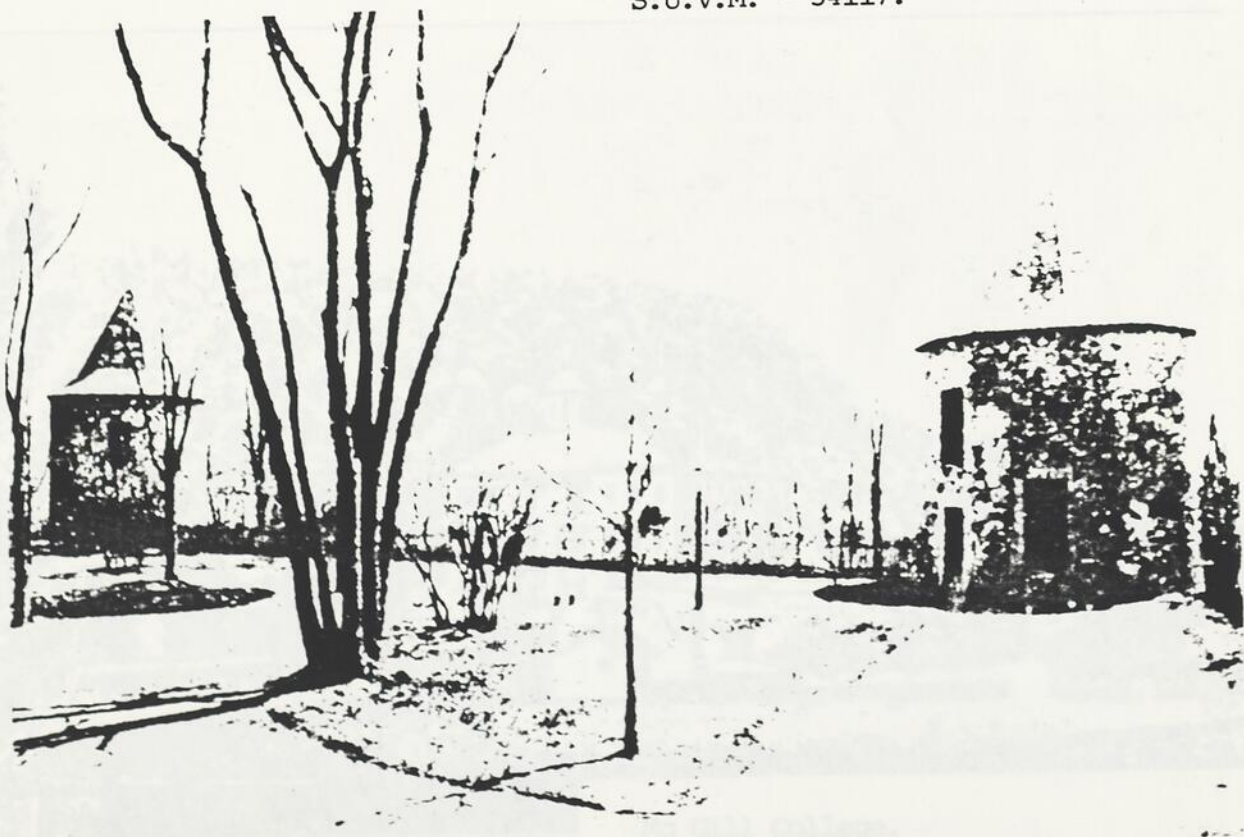
Eglise méthodiste Saint-James.
In: Montreal Old and New, p. 119.
S.U.V.M. - 38789.

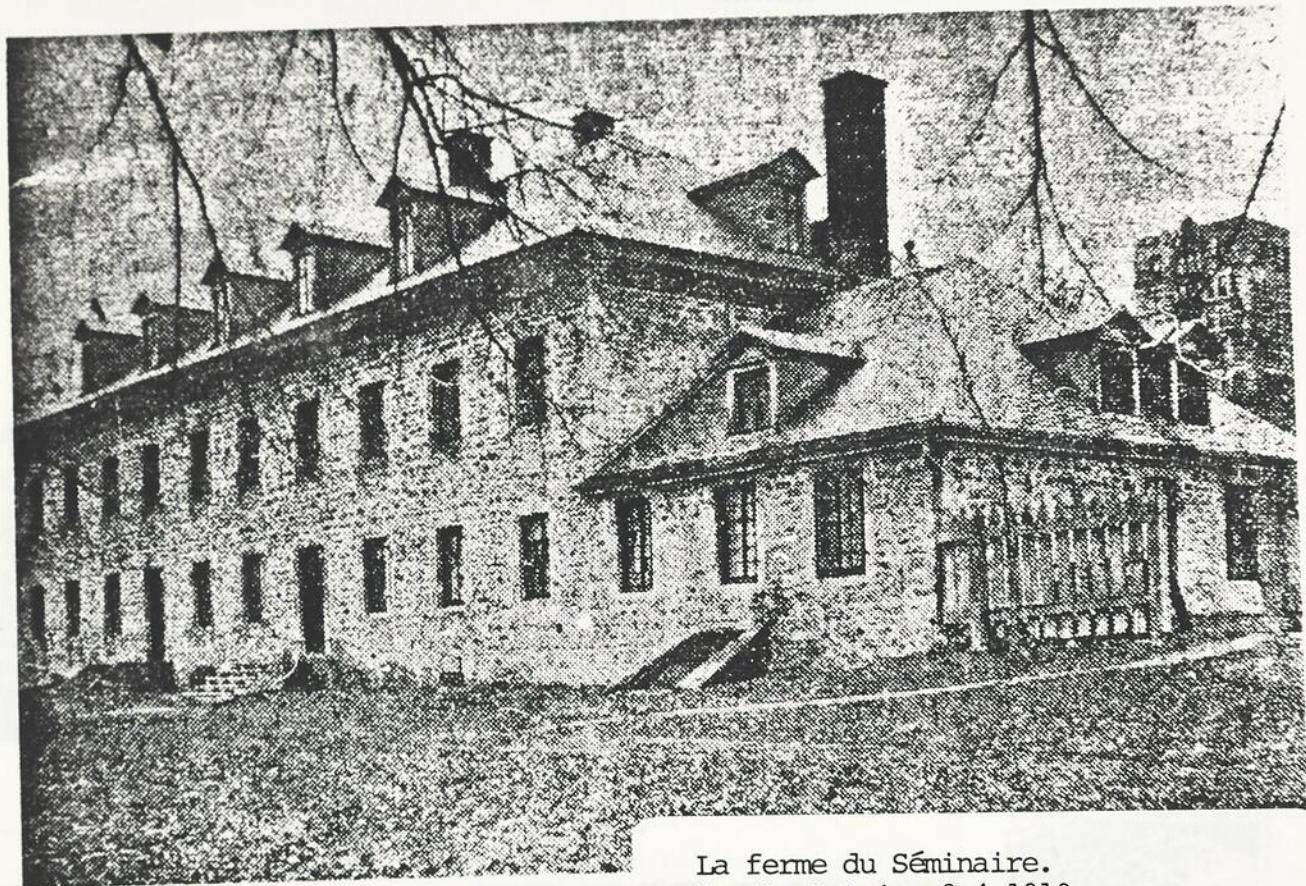


Le séminaire des Sulpiciens.
A.M.M.
S.U.V.M. - 34125.

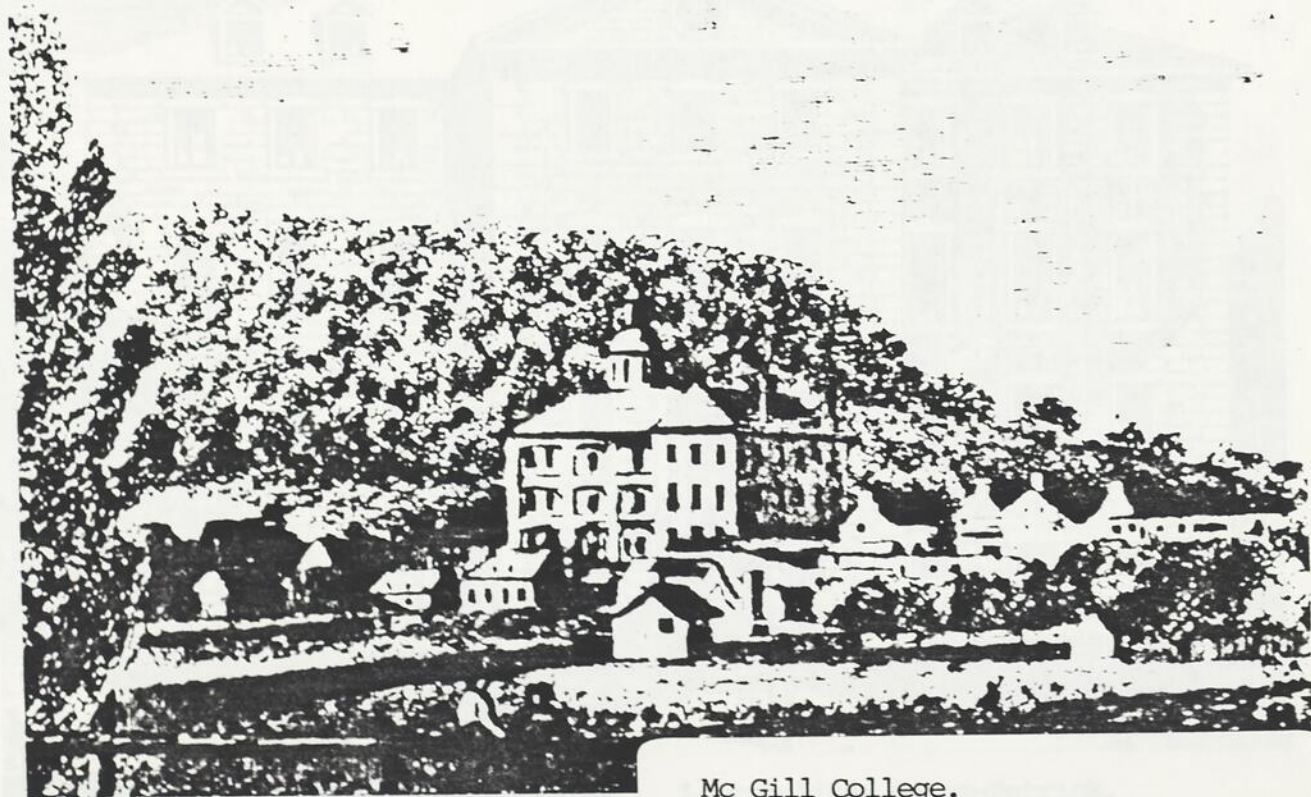


Les tours du Séminaire.
A.M.M.
S.U.V.M. - 34117.



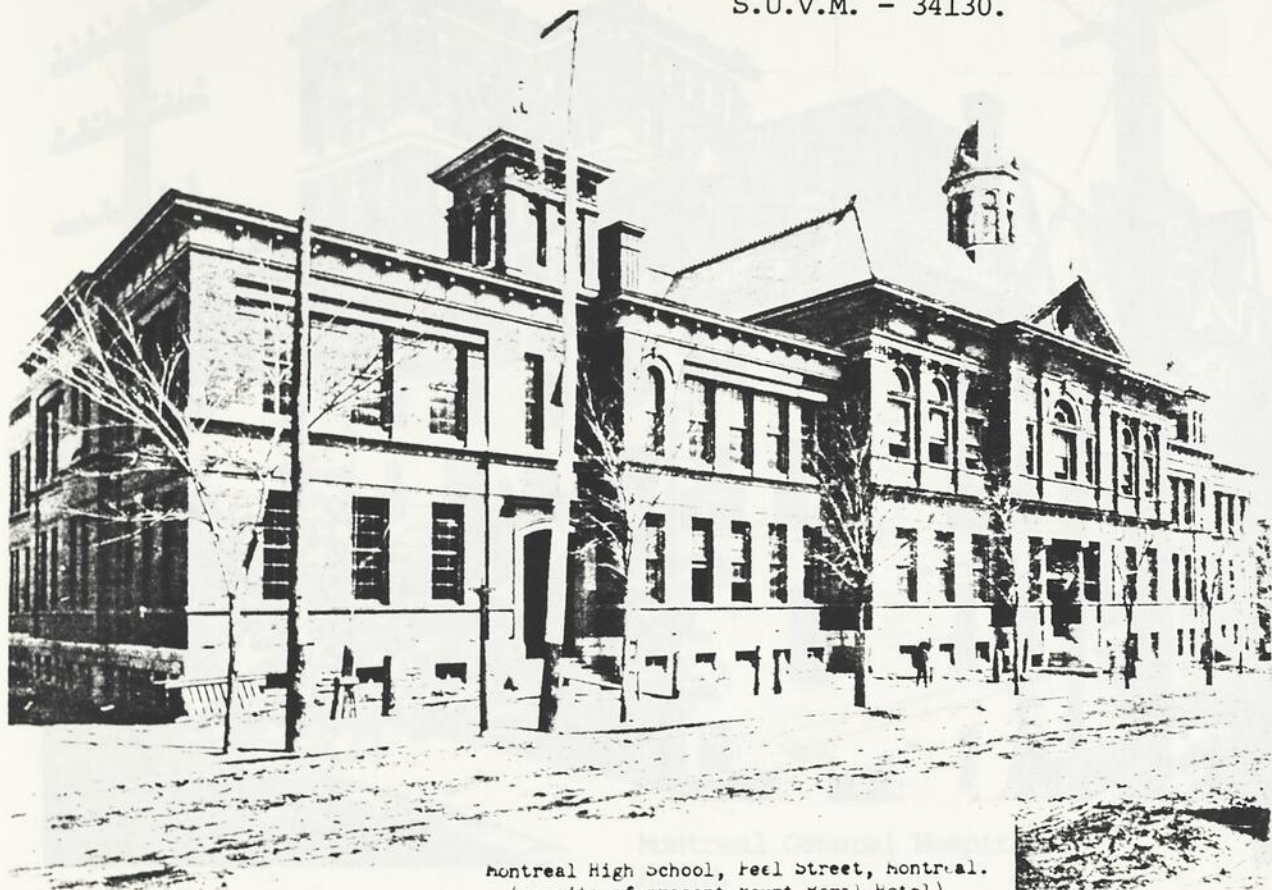


La ferme du Séminaire.
In: La Patrie, 9-4-1910.
S.U.V.M. - 59231.

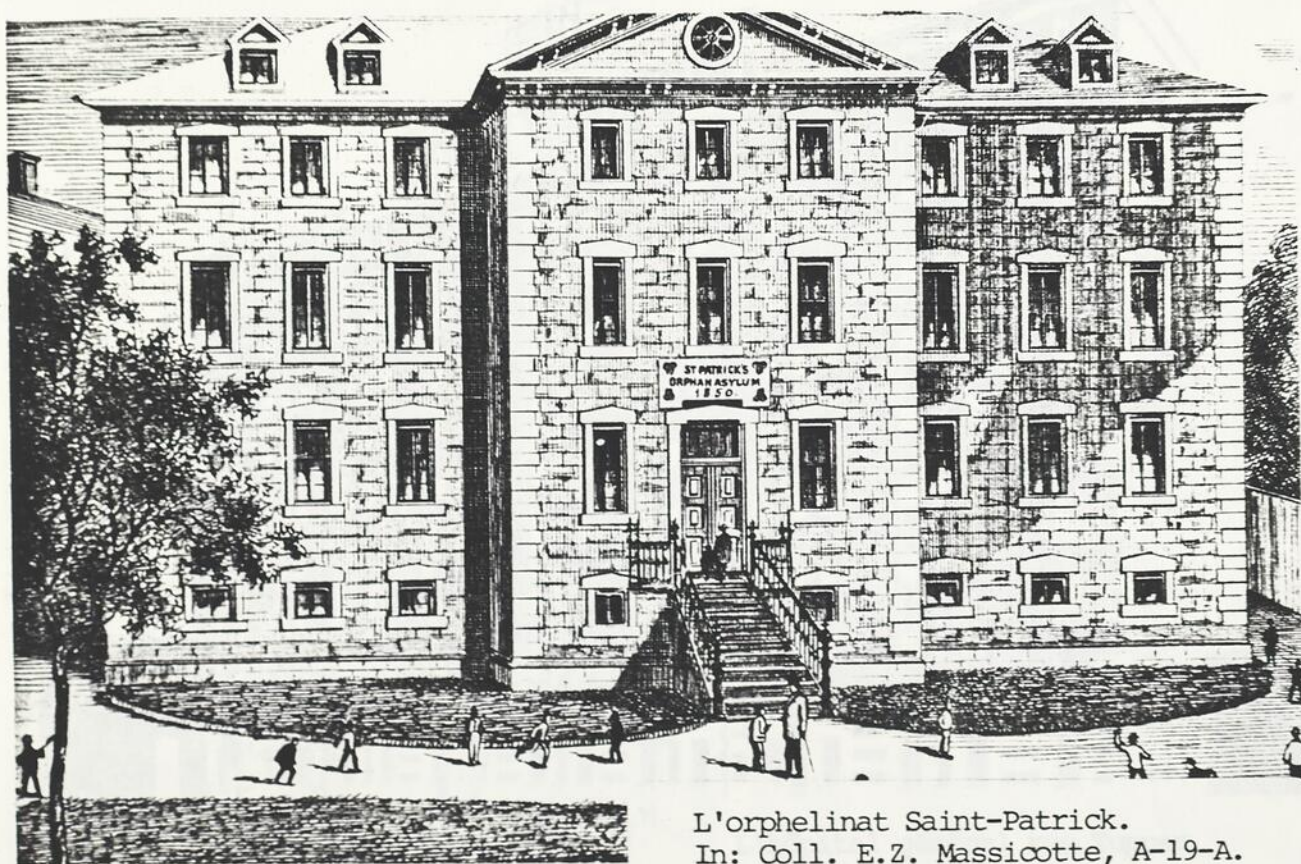


Mc Gill College.
A.M.M.
S.U.V.M. - 34111.

Montreal High School rue Peel
A.M.M.
S.U.V.M. - 34130.



Montreal High School, Peel Street, Montreal.
(on site of present Mount Royal Hotel)



L'orphelinat Saint-Patrick.
In: Coll. E.Z. Massicotte, A-19-A.
S.U.V.M. - 39241.



Montreal General Hospital
A.M.M.
S.U.V.M. - 34099.



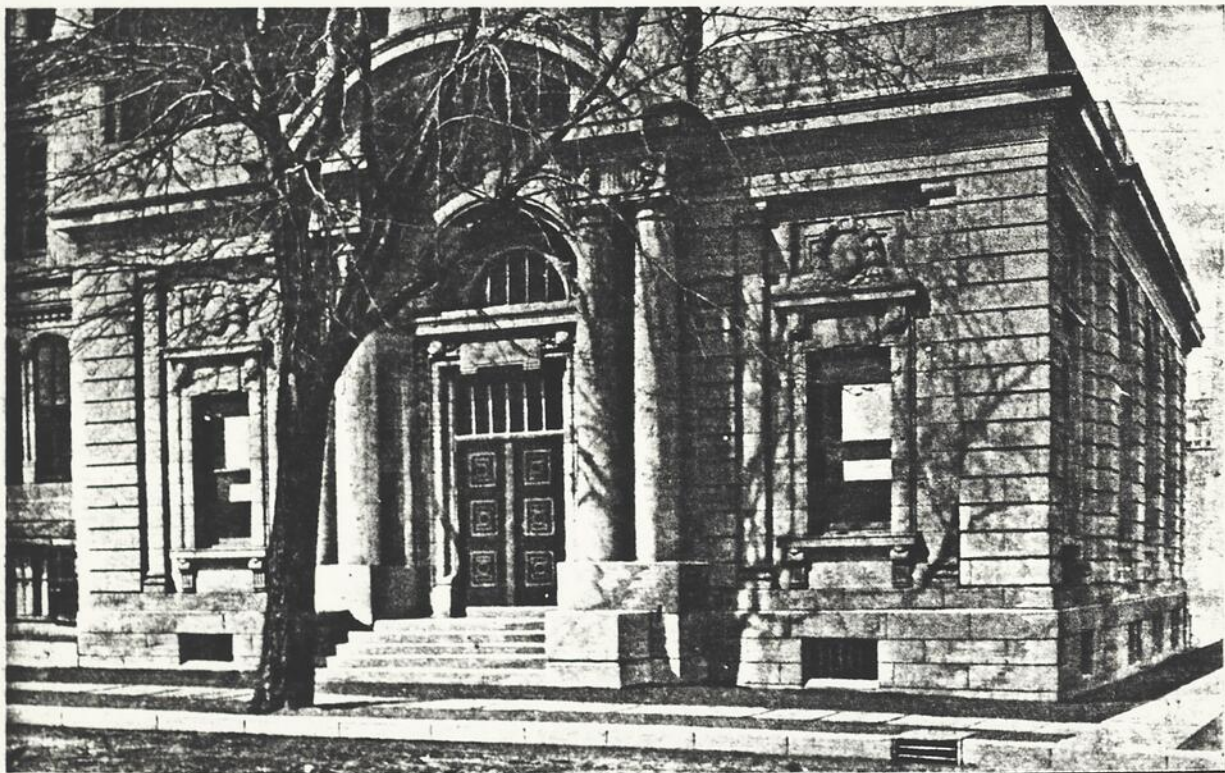
L'hôpital général rue Tupper
en 1936.
A.M.M.
S.U.V.M. - Z 145.



Le musée des Beaux-Arts
In: Montreal Old and New, p. 503.
S.U.V.M. - 34128.

La Banque d'Epargne en 1936
(intersection Mc Gill et Sainte-
Catherine). A.M.M.
S.U.V.M. - Z 68.





The above is the first picture published of the New Branch of the Bank of Montreal which will be opened about the 15th June, on the corner of Peel and St. Catherine Streets. Designed particularly for the accommodation of lady customers.

Banque de Montréal (angle Peel
et Sainte-Catherine).
In: Coll. E.Z. Massicotte, 4132-A.



View from West
A. A. H.
S. O. Y. H. - 2-59.



Hôtel Mont-Royal.
A.M.M.
S.U.V.M. - Z 59.

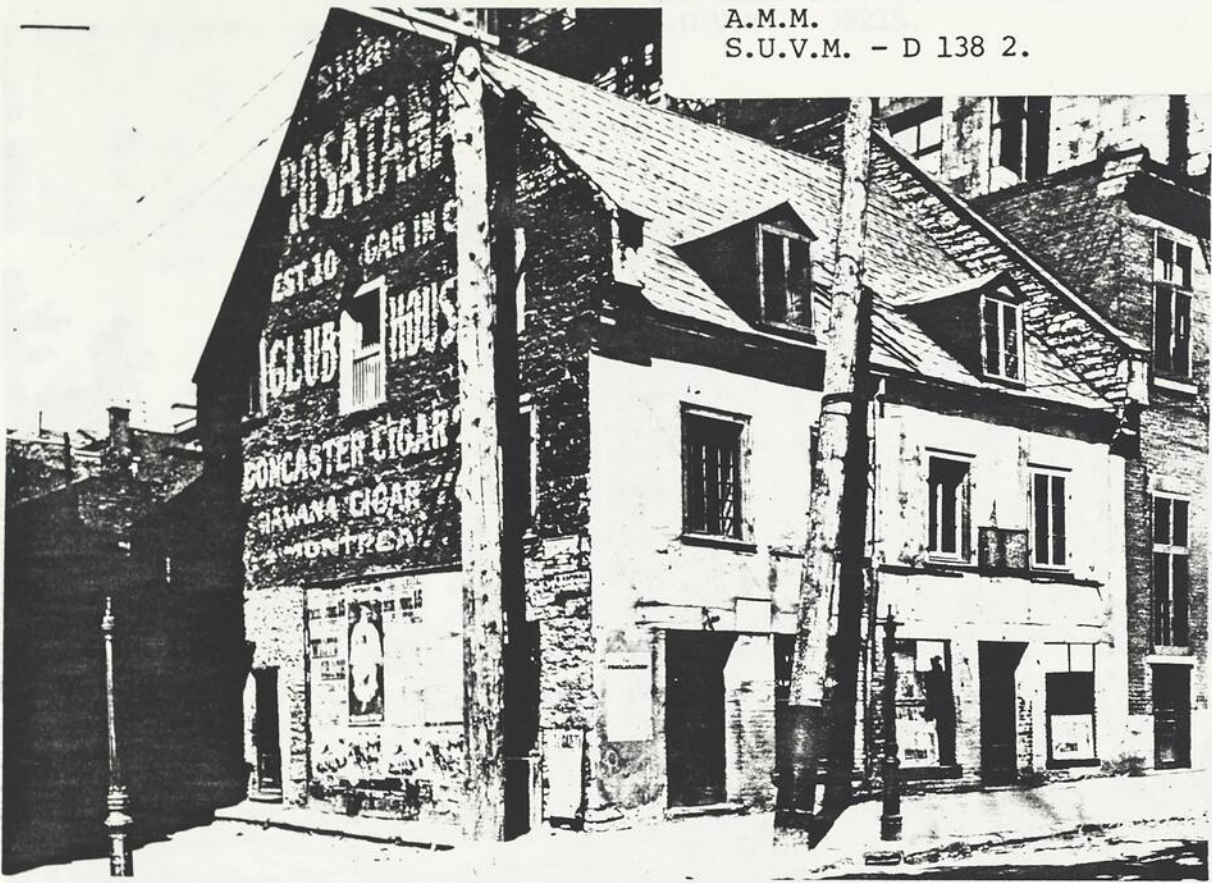


L'hôtel Berkeley, 1188 ouest
rue Sherbrooke.
A.M.M. - S.U.V.M. - Z 73.

Intersection des rues Mc Gill
et des Fortifications.

A.M.M.

S.U.V.M. - D 138 2.



La maison Baylis en 1880.
In: Lost Montreal, p. 78.
S.U.V.M. - 38779.



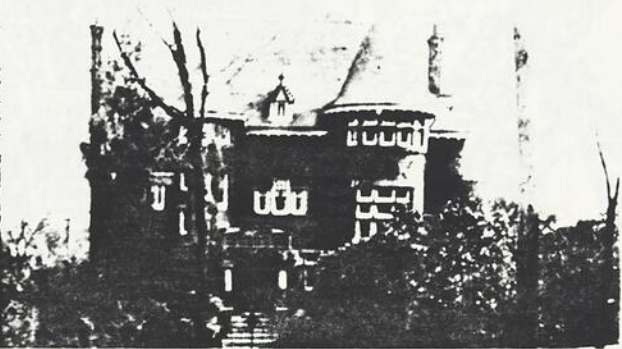
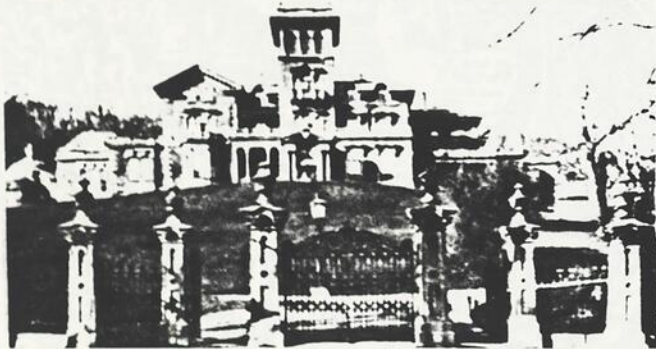
La résidence Coursal en 1875.
In: Coll. E.Z. Massicotte, 2-88-A.
S.U.V.M. - 39215.



La maison Wendale en 1885.
In: Lost Montreal, p. 85.
S.U.V.M. - 38733.

Un groupe de résidences montréalaises.

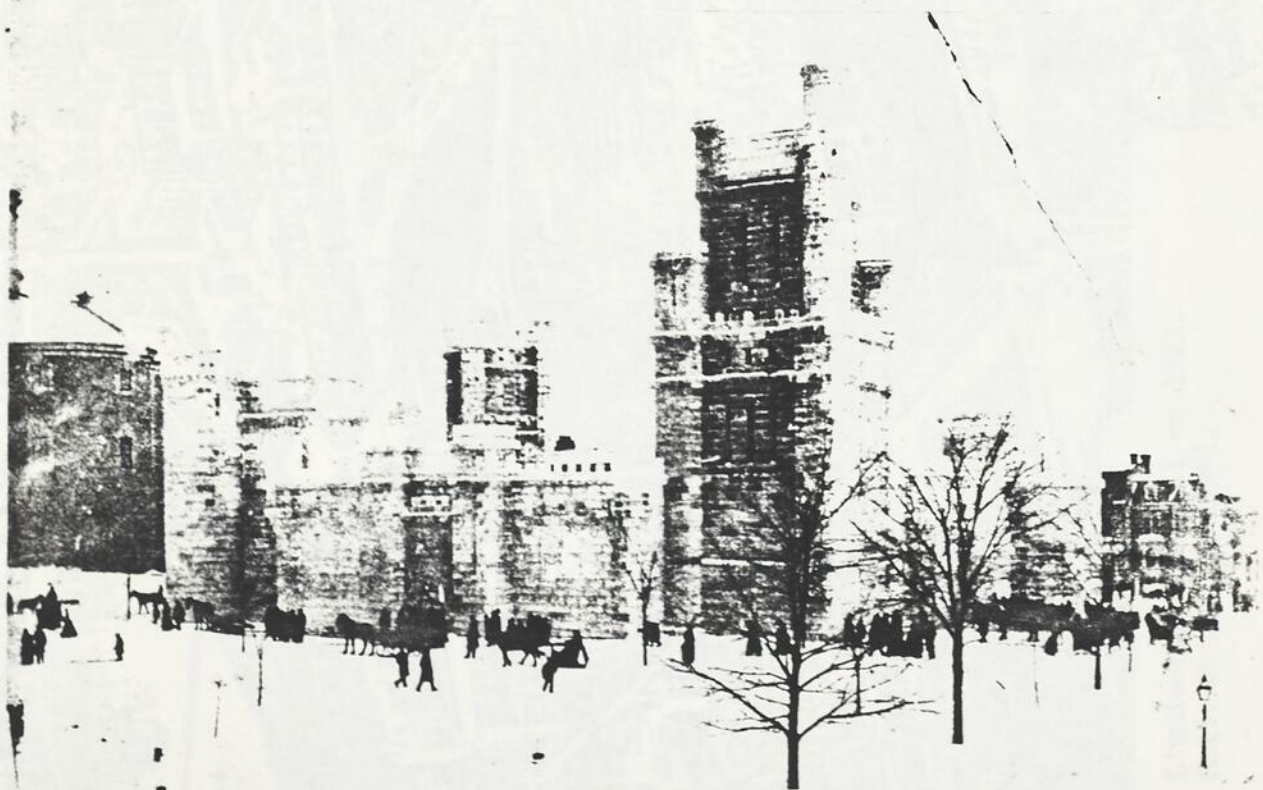
In: Montreal Old and New, p. 157

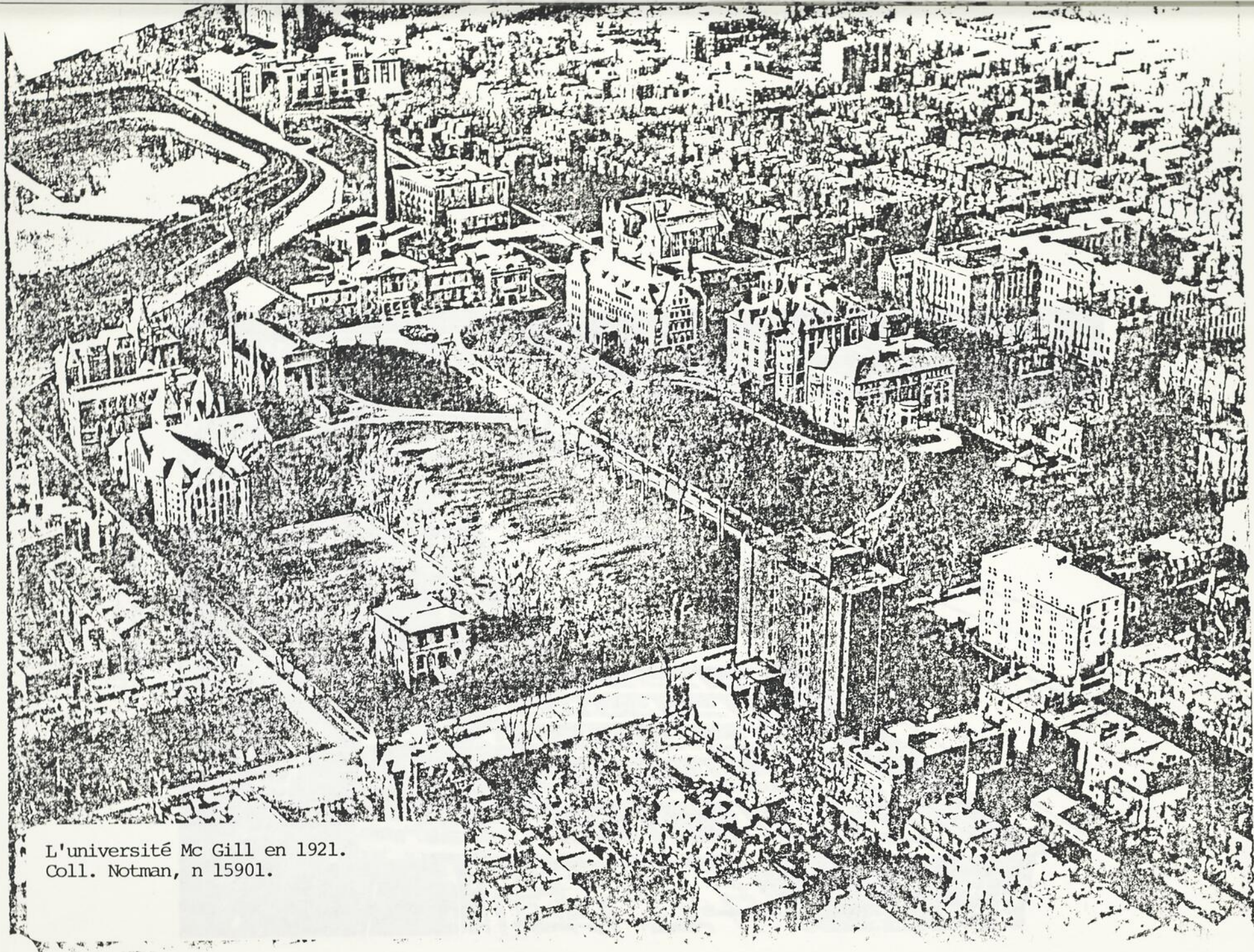


Le palais de glace.

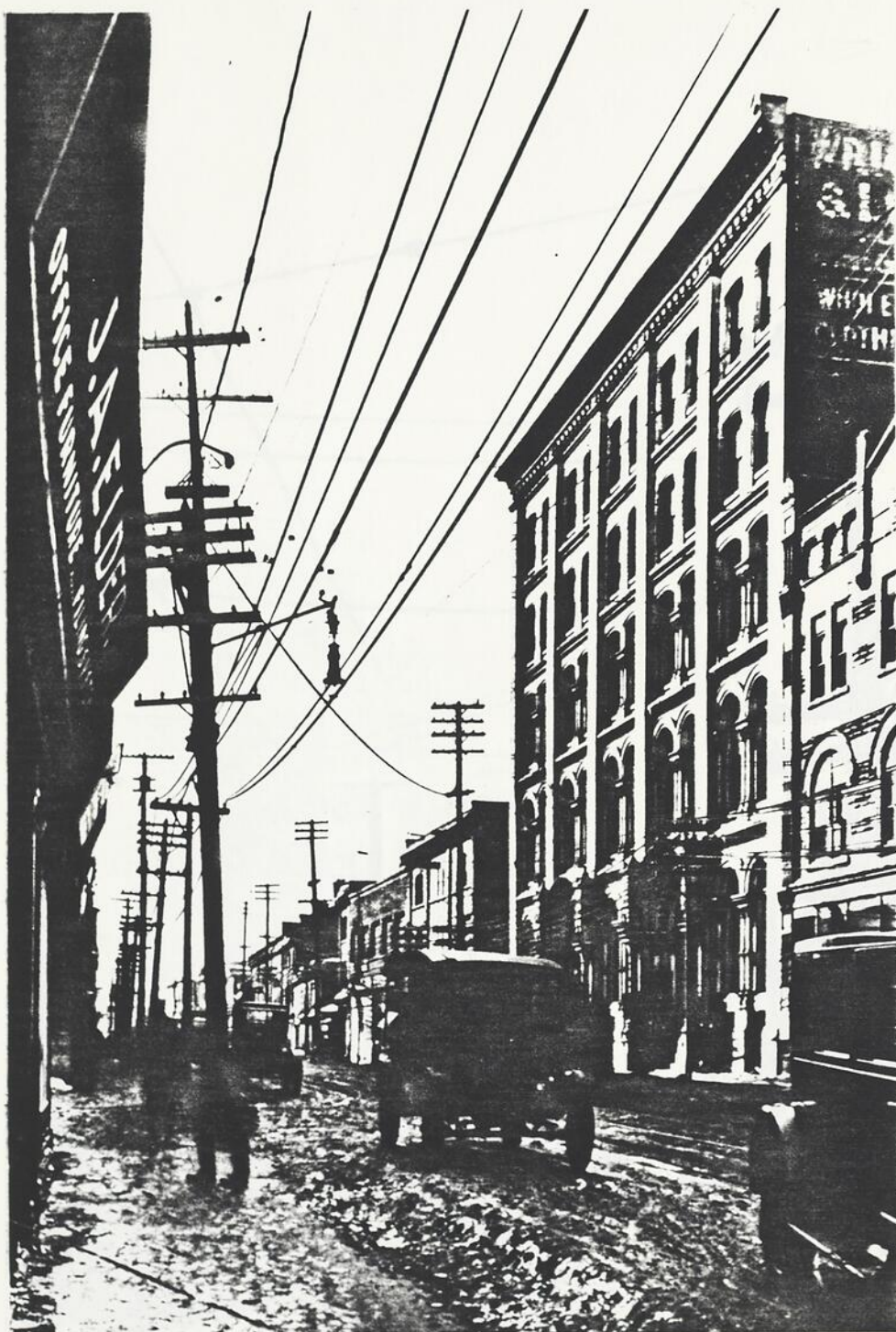
A.M.M.

S.U.V.M. - 34134.

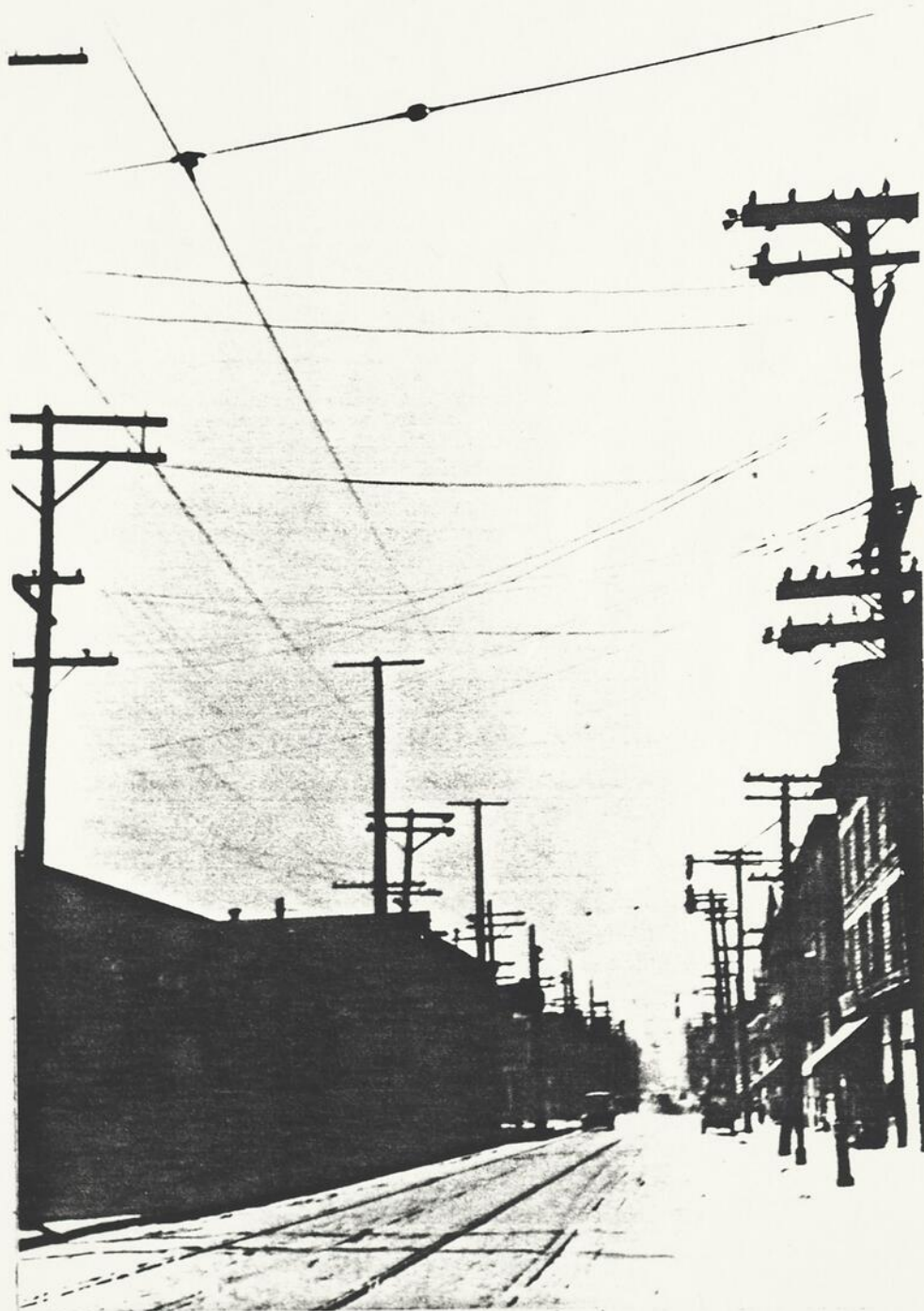




L'université Mc Gill en 1921.
Coll. Notman, n 15901.

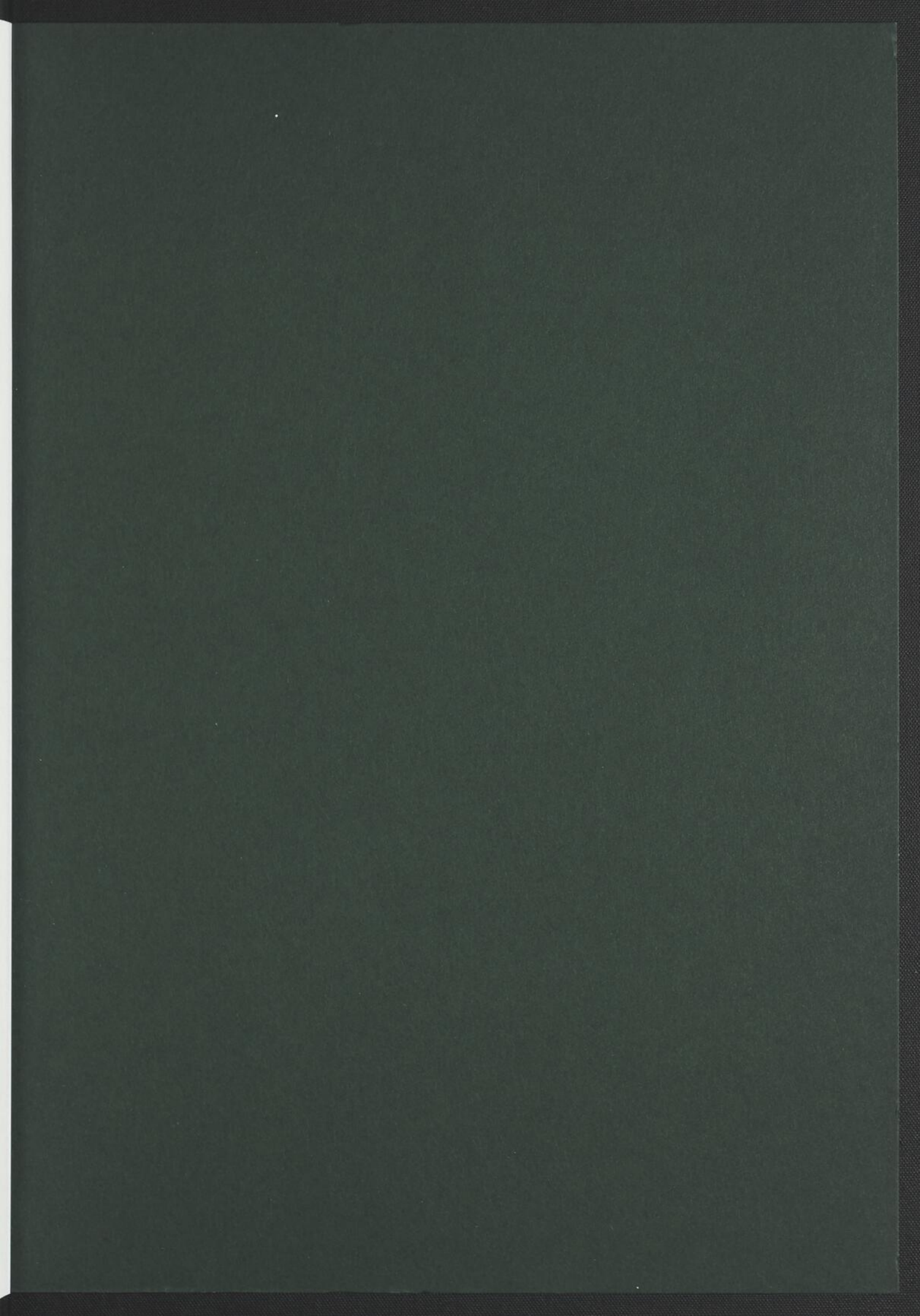


La rue Notre-Dame, ca 1920.
ANQM, 06-M P74/27.



La rue Craig à l'ouest du Carré,
ca 1920.
ANQM, 06-M P74/30.





BNQ



000 285 641