

MUNICIPALITIES IN THE VICINITY OF MONTREAL

FOR NAMES OF RESIDENTS AND GUIDE TO STREETS—SEE STREET AND ALPHABETICAL DIRECTORIES.

MUNICIPALITES AUX ENVIRONS DE MONTREAL

POUR NOMS DE RESIDENTS ET GUIDE DES RUES—VOIR ANNUAIRE ALPHABETIQUE ET DES RUES

LACHINE

A City on the St. Lawrence nine miles from Montreal and on the Island of Montreal, county of Jacques-Cartier. It is the summer residence of many Montrealers and one of the most prosperous manufacturing centres of the Province of Quebec. Its works are numerous and thousands of men are employed yearly. Population, 24,989.

CORPORATION OF THE CITY OF LACHINE.

Mayor—Edgar Leduc
Treasurer and Director of Finance—Rene Laberge.
City Clerk—Emile Daoust.
Aldermen—Wm. A. Gilbery, Art. Leblanc, J. Emile Belanger, Thos. Massie, Louis Gaston and Arcade Pournier.
Recorder's Court—J. A. Robillard K.C. recorder; Emile Deneault, clerk.
City Engineer—A. J. Deslauriers
Health Officer—Dr. Albini Jeannotte.
Chief of Police Department—Paul R. Lauzon.
Chief of Fire Department—Angus Mickie.
City Assessor's Department—U. T. Benoit president.
Filtration Plant—A. J. Deslauriers, superintendent.
Catholic School Commission—City of Lachine, Rev. Alme Bolleau, chairman; Landre Lefebvre, Wilfrid Daoust, Eustache Charron, Joseph Fillion, commissioners; Albert St Denis, secretary; Parish of St. Sacrament, Rev. Albert Gariepy, chairman; Emile Legault, Henri Picard, Daniel Lefebvre and A. St. Amour, commissioners; Emile Daoust, sec.-treas.
Protestant School Commission—D. E. Gyon, chairman; L. V. Brooks, D. J. Boyd, E. Holder, R. S. Tuer, James G. Duncan, commissioners; H. G. Hatcher, supt. and sec.-treas.

LONGUEUIL

(Incorporated 1874).

A City situated on the south shore of the St. Lawrence River, county of Chambly. Distant from St. Lambert 3 miles, from Montreal 2 miles from shore to shore, and 6 miles by rail; 6 miles from Boucherville and 10 miles from Chambly. Mail delivered twice a day. Buses operated by the Montreal Tramways Co connect the city with Montreal. Population, 6,500.

CORPORATION OF THE CITY OF LONGUEUIL

Mayor—Paul Pratt.
Aldermen—J. Arthur Gareau, John E. Taylor, Alexandre Lincourt and O. Rene Gravel.
Secretary-Treasurer—Denis Viger.
Assessors' Department—Arthur Vincent, president.
Legal Department—Phillippe Lamarre, legal adviser.
Police and Fire Department—Jules Brosard, chief.
Health Department—Dr. A. Lamothe medical officer.
Public Works—Alex David, foreman.
Water Works Department—Hector Leclerc chief engineer, Joseph Langlois assistant.
Recorder—Liguori Hebert, K.C.

COMMITTEES.

Finance—J. Arthur Gareau, chairman.
Water Works & Lights—John E. Taylor, chairman.
Police, Fire and Health—O. Rene Gravel, chairman.

MONTREAL (CITY OF)

See City of Montreal page 954

MONTREAL EAST.

(Incorporated 1910)

Adjoining Mercier ward, City of Montreal, County of Hochelaga. The most important industry of Montreal East is that of cement. There are also located vast oil refineries

and oil-storage tanks, and extensive sheds of the Canadian National Railways. Bus service operates from George V and Notre Dame East throughout the town. 9.5 miles distant from Place d'Armes square, Montreal. Population about 3,500.

CORPORATION

Mayor—Napoleon Courtemanche.
Aldermen—Elzear Fournier, Henri Leroux, Adelard Rivet, Edmond Robin and Hormisdas Quintal.
Secretary-Treasurer—J. Emery Coderre, N.P.
Town Manager—Napoleon Courtemanche.
Chief Accountant—Ernest Courtemanche.
Town Hall—11370 Notre Dame St.
Assessors' Department—J. N. Langelier, president; Cyrille Durocher and Leger Dussault, assessors.
Legal Department—Vien, Faribault & Trudeau, legal advisers.
Police and Fire Departments—Arthur Meunier, chief; Arthur Durand, dep. chief.
Health Department—Dr. D. R. Bisson, medical officer, Arthur Meunier, inspector.
Public Works—Raoul Tiernan, foreman
Engineer—Henri Gauthier, I.C.
Building Inspector—Henri Gauthier, I.C.
Recorder—Maurice Trudeau, C.R.

COMMITTEES

Finance—Henri Leroux, chairman.
Public Works—Adelard Rivet, chairman.
Police and Fire—Elzear Fournier, chairman.
Public Buildings and Parks—Hormisdas Quintal.
Health—Edmond Robin.

AUDITOR

Victor Pelletier, C.P.A.

MONTREAL SOUTH

A Town on the south shore of the River St. Lawrence adjoining Longueuil and one mile from St. Lambert Station, County of Chambly.

The Montreal & Southern Counties Electric Railway (now operated by the Canadian National Railways) gives the residents a 20-minute service with Montreal via Victoria Bridge, and buses, operated by the Montreal Tramways Co., connect with Montreal via the Jacques Cartier Bridge.

The Jacques Cartier Bridge over the St. Lawrence river ends in the centre of the town.

There are three churches, Catholic, United and Anglican, a Town Hall and three schools, including the English High School of Montreal South and Longueuil. Population, about 1450.

MUNICIPAL COUNCIL.

Mayor—J. E. Brindley
Aldermen—T. Healey, O. Cyr, A. J. Asgood, H. Russell, C. G. Hartt and R. G. Keers.
Fire Chief—B. H. Cox.
Secretary-Treasurer—P. H. Anderson.
Recorder—J. C. Savage.
School Commissioners of Catholic Board—O. Cyr, Jos. Cayouette, Alderic Chevalier, Prime Lord, Trefle Brazeau, Clement Patenaude, sec.-treas.
School Commissioners of Protestant Board—D. Pollock, chairman, T. Gregson, Chas. J. Harrod, H. T. Palmer, T. V. Battersby, commissioners; Harold B. Lee, sec.-treas.

MONTREAL WEST

(Incorporated as a Town, 1897).

This beautiful suburb, in the County of Hochelaga, is easy of access and is in great favor for residential building. Trains connect with the City at almost all hours both by the Canadian Pacific and Canadian National Railways, while the Upper Lachine and Sherbrooke Boulevard roads afford delightful drives. The Montreal Tramways Co cuts through the lower part of the Town affording a 20-minute service with the city, and enters the Town by the Sherbrooke

Boulevard with a 6 minute service. There is also a frequent motor bus service between Montreal West and Lachine, operated by the Montreal Tramways Company. Public and high schools and a post office with postal delivery twice a day. Population about 3,500.

CORPORATION OF MONTREAL WEST

Mayor—James R. Pearson.
Secretary-treasurer—Chas. I. Fraser.
Commissioners—G. E. Templeman, A. S. Booth, Morley C. Luke and R. H. Ross.
BOARD OF SCHOOL COMMISSIONERS (MUNICIPALITY OF COTEAU ST. PIERRE)
Chairman—C. W. Bark.
Commissioners—F. Y. Dorrance, W. H. Payne, P. W. Wright, J. White.

OUTREMONT

(Incorporated in 1875.)

A City situated near the west end of Mt. Royal Park, forming part of the parish of Montreal, county of Hochelaga. It is bounded on the east by Laurier and St. Michael wards, on the north by St. John ward and Town of Mount Royal, on the west by Mount Royal ward. Two electric car service routes are provided by the Montreal Tramways Co. (Laurier av., St. Catherine rd. and Bellingham rd. for southern section; Bernard av., Outremont av. and Van Horne av. for northern section). A two and a half and five minute service is provided on each route, also autobus service on Bernard av. and Boulevard Mont Royal (its whole length) to Montreal Tramways terminus. The city contains seven very fine schools, four Catholic (College Stanislas, Quebecs Academy, St Germain Academy and Lajole School) three Protestant (Strathcona Academy, Alfred Joyce and Guy Drummond public schools) and three large convents, a City Hall and the Outremont Curling, Tennis and Bowling Clubs, Municipal Tennis, Shuffleboard Courts, Skating Rinks and Toboggan Slides. A municipal plant lights the city with electricity. It has an ample water supply, a thorough system of drainage, and an efficient police and fire brigade is maintained for the protection of the city. Easy of access from the City of Montreal (centre) no finer suburb can be found. Population 30,741.

CORPORATION OF OUTREMONT

Mayor—Joseph Beaubien.
Aldermen—H. Grou, G. A. F. Pratt, J. D. Hudson, Charles Bourassa, Owen J. Callary, H. C. Hannaford, Hon. Senator E. Beaugard, K.C., C. W. Moore and E. C. Vidraire.
City Solicitor—Hon. C. P. Beaubien, K.C.
City Auditors—Sharp, Milne & Co.
City Clerk and Treasurer—Ernest T. Sampson, F.I.M.T.A.
City Engineer and Manager—Emile Lacroix, B.A.Sc.
Building Inspector—Emile Lacroix, B.A.Sc.
Chief of Police—J. Griffiths.
Medical Health Officer—H. S. Shaw, M.D.
Recorder—Wilfrid Bessette, K.C.

ST. LAMBERT.

A City on the south shore of the St. Lawrence, directly opposite Montreal two miles from the centre of the city, in the county of Chambly, district of Montreal. The electric car service is operated by the M. & S. C. Ry. There is also an excellent train service by the Canadian National Railways. The Jacques-Cartier Bridge over the St. Lawrence to the South Shore is only a short distance from the limits of St. Lambert. Population, 6,500.

MUNICIPAL COUNCIL.

Mayor—H. R. G. Clack
Aldermen—C. A. Comeau, R. Poulin, H. L. Hartley, G. L. McFadyen, Dr. P. J. Rellis, G. M. Hill.

Coated Papers and Boards for Printers' Lithographers' and Box Makers' Needs

COMPLETE MILL CONNECTIONS

T. B. LITTLE COMPANY LIMITED

1050

Mountain Street
Tel. MARq. *3733



THE CRADOCK SIMPSON COMPANY

Real Estate Insurance Mortgage Loans

Management of Real Estate a Specialty

DOMINION SQUARE BUILDING

1010

St. Catherine St. West
Tel. HARbour 6117

VILLE ST. PIERRE

The Town is situated on the north side of the Lachine Canal, between the City of Lachine and the Town of Montreal West, in Jacques Cartier County, being traversed by the C.N.Ry and the C.P.Ry., and having a ten-minute service to the heart of the City of Montreal by the Montreal Tramways Co. Population, 4,231.

CORPORATION

Mayor—C. A. Kirkland
Aldermen—Otis Kirkland, R. A. Picotte, Richard Scott, G. Towstuk, J. E. Fournier, Donat Boyer.
Sec.-Treas.—F. H. Malo.
School Commissioners—President, Otis Kirkland; councillors, Albert Larche, R. A. Picotte, Arm. Chenier, Donat Boyer; sec., Victor Paul.
Fire & Police Chief—Eugene Lavallee.

WESTMOUNT

The City of Westmount is beautifully situated on the western slope of Mount Royal, and from the upper level a magnificent view of the St. Lawrence River, Lake St. Louis and surrounding country is obtained. The city is almost exclusively residential and may be designated a "city of homes." Available properties for building sites are rapidly being occupied. The city is governed by a mayor and five aldermen, elected for a term of two years by the city at large. The city manager form of government has been in vogue for 29 years, and the city's progress is evidence of the wisdom of the adoption of this system of government.

The city owns and operates in a very efficient manner an electric light and power station and garbage destructor plant. Park and playground spaces owned by the city cover an area of about 119 acres equal to 12 per cent of the total area of the city. Twelve greenhouses are maintained. A flower clock has proved to be a novel attraction.

Many municipal tennis courts are in great demand during the summer months and every facility is given for the enjoyment of winter sports.

The Westmount Athletic Grounds on St. Catherine Street, containing an area of 15 acres, are leased to the Dept. of National Defence.

The city owns a free public library. During the year 211,145 volumes were circulated for home use.

The Victoria Hall as a community centre is continually in use for church, charitable, educational, fraternal, municipal, political and social activities.

Public education is provided by the school commissioners of Westmount and the school commission of St. Leon de Westmount. In addition there are a number of private schools.

The city is supplied with filtered water and a 98 per cent. efficiency is required. The water is regularly tested to assure that a maximum of purity is maintained. Population about 25,224.

CORPORATION.

City Hall—Sherbrooke W. cor Argyle st.
Mayor—Walter A. Merrill, K.C.
Aldermen—Col. Irving P. Rexford, commissioner of finance; C. K. McLeod, commissioner of roads and municipal buildings; Douglas Lorimer, commissioner of electric light and power, health and public welfare; W. B. Scott, commissioner of police and fire; B. Panet-Raymond, commissioner of parks.
City Clerk & Treasurer's Dept.—C. W. Houston, secretary-treasurer; E. L. Jewett, assistant; A. W. D. Swan, city accountant; A. R. Bourdon, assistant; J. W. Weldo, K.C., city attorney; Macintosh, Robertson & Paterson, auditors; Major J. Collin Kemp, chairman, Board of assessors.
General Manager & City Engineer—P. E. Jarman.

Assistant to General Manager—Thos Hughes.

Roads Dept—P. G. Delgado, supt of Public Works

Electric Light Dept—E. P. Brown, supt.

Police Dept—W. Gough, chief.

Recorder's Court—Chas. A. Hale, K.C. recorder.

Fire Dept—W Gough, chief; Wm. Barriis, deputy chief.

Health Dept—Dr. F. M. A. McNaughton, medical health officer.

Parks and Playgrounds—E. J. Anderson, supervisor.

Library—Miss Kathleen Jenkins, librarian; Miss S. B. Wilson, reference librarian; Miss R. G. McEwen, children's librarian.

Recorder—Ariste Brossard, B.A.
Manager and City Engineer—M. J. Rutledge, B.Sc.
City Clerk—Miss G. Emard.
Chief of Police—Albert Forget.
Supt. of Water Works—E. Le Royer.
Catholic School Board—J. A. E. Ranger, president; A. R. Gravel, E. Jodoin, Philias Baillargeon, sec.-treas.
Protestant Board of School Commissioners—W. H. Smedley, chairman; F. S. Brophy, A. F. Bentley, H. H. Vroom, Rev. J. D. McCrae, H. R. G. Clack, sec.-treas.
Board of Health—Mayor and Aldermen.
Medical Health Official—J. R. Oulton, M.D.
Chief Assessor—R. G. Heughan.
Food Inspector—R. M. Levert, V.S.

TOWN OF HAMPSTEAD

A Town adjoining Notre Dame de Grace ward of the City of Montreal, from which it is separated on the south by Cote St. Luke Road, and on the east by Macdonald av. Queen Mary road is the stopping point for Hampstead, which lies three blocks west along Queen Mary road. The Snowdon junction stop on the Cartierville line lies five blocks east of Hampstead. Queen Mary road leads right into the town.

Hampstead is a beautifully laid out garden town, and has very rigid building restrictions. Population about 2,200.

CORPORATION OF THE TOWN OF HAMPSTEAD.

Mayor—H. G. Parsons.
Aldermen—F. W. Baridon, J. W. Day, J. R. Dowrie, Gordon Mann and J. M. Cole.
Board of School Commissioners—A. I. Smith, chairman; V. B. Van Wart, John Rhind, J. H. Hutcheson and E. B. Plant.
Director of Services—K. G. Cameron.
Sec.-Treas.—Leltrim E. L. Harvey.
Asst. Sec.-Treas.—C. G. Leavitt.
Chief of Police—Arthur Harris
Recorder—J. J. Harold.
Deputy Recorder—A. I. Smith.

TOWN OF MOUNT ROYAL
THE MODEL CITY

Eight minutes from the heart of Montreal via the electrically-operated Tunnel of the Canadian National Railways, lying on the northwest slope of Mount Royal and adjoining the cities of Montreal and Outremont.

The Town is conveniently reached by automobile from Outremont by following St. Catherine road to Rockland avenue, crossing the Canadian Pacific Railway tracks. The Town of Mount Royal's territory commences at this point. To the westward it can be reached by Cote des Neiges rd which is the continuation of Guy street.

Montreal Tramway buses (corner Queen Mary rd. and Cote des Neiges) cross the Town of Mount Royal to Park av. and Jean Talon with a ten-minute service.

Education—For Protestant and Catholic School purposes the territory of the Town of Mount Royal has been created into a separate school district. The School Commissioners have built a fire-proof two-story and basement school, built of brick and re-inforced concrete where elementary and high school grades are taught. A new fireproof school has been built to accommodate the first four grades. The classes are conducted by teachers of high scholastic degree. The Catholic education is taken care of by a new Catholic school, modern in every detail. Population about 5,000.

School enrolment for both schools 800 pupils

CORPORATION

Mayor—M. A. Metcalf.
Aldermen—R. E. Schofield, F. T. Webb, C. U. Vessot, C. B. Reid and W. H. Adlington.

Sec.-Treasurer—Eugene Ravel.
Engineer—Walter MacNeill.
Police Dept.—George Elliott, chief.

Board of Protestant School Commissioners—F. C. Breeze, chairman; R. E. Heartz, A. T. Christie, Vance Johnson and P. N. Soden, commissioners.

Board of Catholic School Commissioners—R. Thomas, chairman; Camille Girard, H. Hogan, R. Lamarche, J. Prieur, commissioners; Adrienne Perrault, secretary-treasurer.

Town Office 1020 Laird Blvd, Town of Mount Royal

VERDUN

The City of Verdun is ideally located at the south-western limits of Montreal on the banks of the St. Lawrence River, which is

about 8 miles wide at this point. The municipality was incorporated as a village under the name of Riviere St. Pierre in 1874, changed to the Village of Verdun in 1876, erected into a Town in 1907 and a City in 1912. Since 1901 its population has increased from 1898 to 68,000. Possessing very few industries it is almost entirely composed of homes and stores. Its famous boardwalk is now being replaced by a modern asphalt promenade, brilliantly lighted, along the entire three-mile river front, and banked with attractive lawns and shrubbery. Municipal tennis courts, a bowling green and a dance pavilion are also situated here. In addition a very modern Municipal Auditorium and Hockey Arena has recently been opened, seating 4,500, as well as two magnificent open air municipal swimming pools, both on the river front.

Great success has been achieved in the building of homes under the National Housing Act, the City offering suitable lots for sale at very low prices. On this plan a small model village is also to be constructed.

Educational facilities are excellent, with thirteen Catholic and eight Protestant schools. There are two hospitals and eighteen churches. Public services such as health, police, water and electricity are of the best. Through its Municipal Playgrounds Commission the City Council gives special attention to providing and supervising playgrounds for children, and new areas are continually being designated for this purpose.

The form of civil government consists of a mayor and eight aldermen elected every two years. Four aldermen are elected by proprietors only, and the Mayor and four aldermen by all rate payers. The City Manager System has been in force since 1938. The Mayor and four aldermen constitute an Executive Committee. Population, 68,000.

CORPORATION.

City Hall—475 Church avenue.
Mayor—Edward Wilson.
Aldermen—E. Ste-Marie, M. Duquette, A. Rolland, G. Brown, O. Bombardier, R. Dorais, A. Gauthier and R. W. Scurrah.
General Manager, Director of Finance and Treasurer—J. R. French.
City Clerk—A. J. Burgess.
City Engineer—Henry Hadley, C. E.
Superintendent of Works—A. Lefort.
Director of Police and Fire—Alfred Dubeau.
Medical Health Officer—A. D. Archambault, M. D.
Food Inspector—Dr. Geo. Etienne.
Legal Advisor—Francis Fauteux, K.C.
Auditor—L. D. Viau, C.A.
Recorder—E. Desjarlais, K.C.

VILLE La SALLE

A Town on the North Shore of the River St. Lawrence, situated between Verdun and the City of Lachine, directly connected with Montreal West and Ville St. Pierre on the north, in Jacques Cartier County.

The Town Hall is located at No. 13 Strathyre av. Council meets on second Wednesday of each month. Fire and police departments are located at 8745 La Salle Blvd., Ville La Salle. The C. P. R., N. Y. C. and Delaware & Hudson R. R. Co., supply service, "La Salle" being the name of the Railway Station. Population, 4,500.

CORPORATION OF THE TOWN OF LASALLE

Mayor—J. Anatole Leroux.
Aldermen—Ern. J. Hayward, Frederic Lafleur, Albert Boivin, J.-Bte Beyries, William Fothergill and Alf. Lefebvre.
Secretary-Treasurer—Alb Gravel.
Director of Police and Fire—J. E. Benoit.
Foreman—Oscar Tittley.
Health Dept.—Maurice Lacharite, M.D.
Recorder—Jacques Belque

VILLE ST. LAURENT

A thriving Town and parish in Jacques Cartier County on the island of Montreal and on the C.N.R., 4 miles from Montreal. The Montreal Tramways Co. runs electric car and bus service between here and Montreal at 8-minute intervals day and night. Population about 8,000.

CORPORATION

Mayor—Geo. P. Laurin, N.P.
Town Clerk—Henri Lapointe.
Treasurer—David Rochon.
Accountant—Robert Valade.
Superintendent—E. Lecavaller.
Aldermen—East Ward, L. C. Harris, Wilf. Trepanier, J. Prime Belanger; West Ward, Paul-Emile Laperriere, Armeus Gohier, Rene Cousineau.

THE
MONTREAL
HERALD

A

LIVE WIRE
DAILY
NEWSPAPERLETTER
WRITING
is a PLEASURE

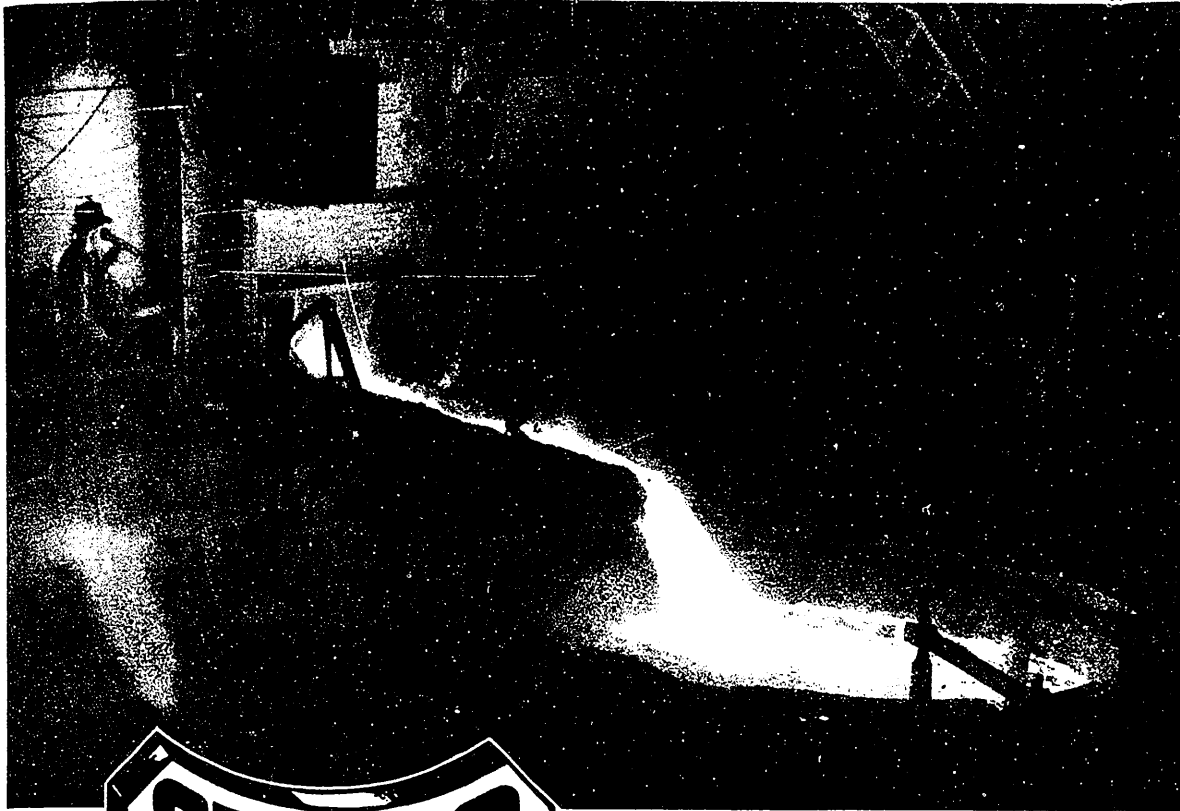
WITH



Parchment

THE POPULAR
ALL CANADIAN
STATIONERYfor
LADIES'
AND
GENTLEMEN'S
CORRESPONDENCEASK FOR IT AT
YOUR STATIONERS

Serving **CANADA** *with*



STEEL PRODUCTS

"STELCO" Products are manufactured within our Plants through all processes "from ore to finished article" giving us complete control over "the quality".

A broad outline of our many products is listed, but this list could be lengthened to include many types and styles under each general heading.

If you are interested in any products coming under these classifications, we would be pleased to have you approach our nearest office for further details.

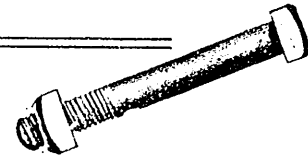
Write for Catalogues

General Catalogue or Supplementary Catalogues covering specific products are available upon request.

**THE STEEL COMPANY OF CANADA
LIMITED**

HAMILTON — *Executive Offices* MONTREAL

Sales Offices: HALIFAX, SAINT JOHN, OTTAWA, TORONTO, LONDON, WINDSOR, WINNIPEG, VANCOUVER
Works:—HAMILTON, TORONTO, BRANTFORD, LONDON, GANANOQUE, MONTREAL, LACHINE



COKE
COKE BY-PRODUCTS
PIG IRON
SEMI-FINISHED
STEEL
Merchant Bars
Angles
Reinforcing Bars
Spring Steel
Alloy Steel

SHEETS
Galvanized
Galvannealed
Vitreous Enamelling
Copper Bearing

TIN PLATE
STEEL PLATES
Boiler Circles
Firebox Flange
Locomotive Sheared
Ship Sketch
Structural Tank
Universal

TRACK FASTENINGS
DROP FORGINGS
BOLTS AND NUTS
Machine Carriage Stove
Coach and Lag Screws
Blank and Tapped Nuts
Lock Nuts

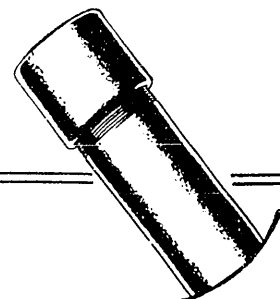
RIVETS SPIKES
WASHERS
POLE LINE HARDWARE
STEEL PIPE
Black and Galvanized
Couplings Nipples

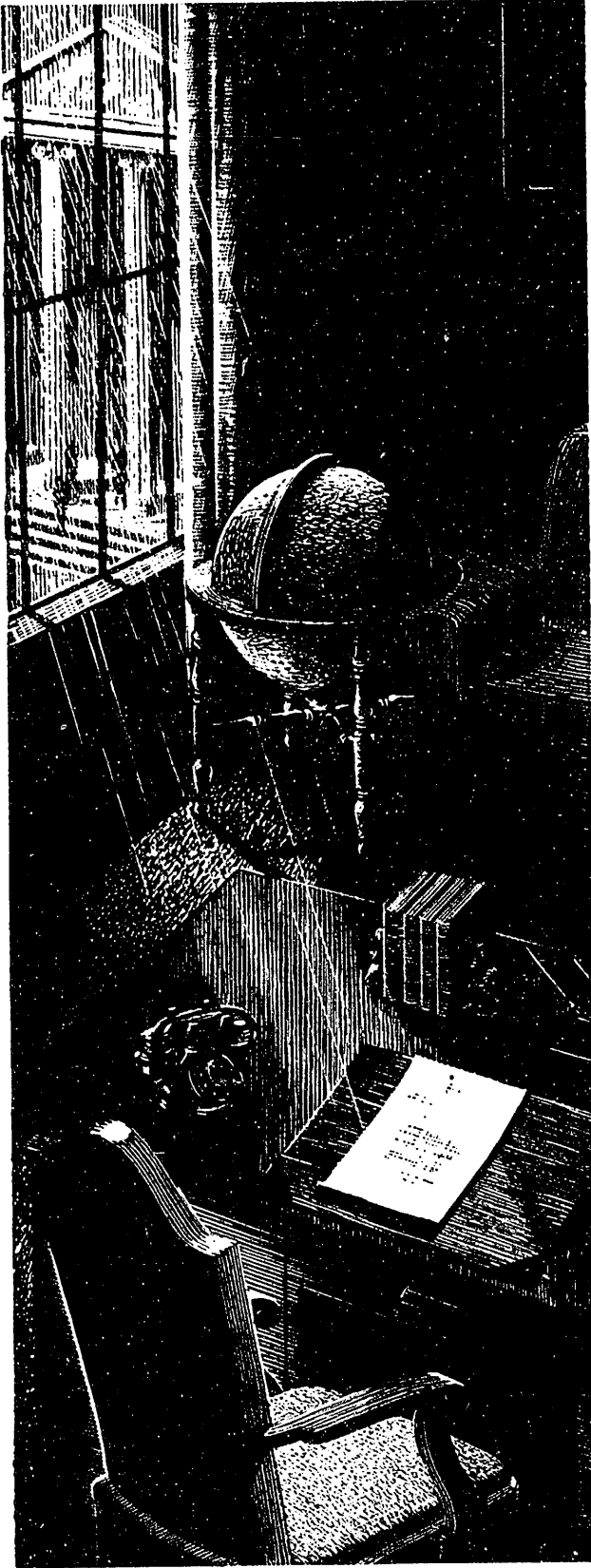
**FENCING AND
ACCESSORIES**
Farm Chain Link
Lawn Posts Gates

WIRE PRODUCTS
Heavy and Fine
Rope Spring Galvanized
Barbed Welding Shaped

NAILS, STAPLES, TACKS.
**WOOD, MACHINE AND
SHEET METAL SCREWS**
Slot Head Socket Head
Recessed Head

HORSE SHOES
TOE AND HEEL CALKS
STEEL HOOPS





SUPERFINE

In all the realm of fine paper there is none more beautiful in texture, more distinguished in character and more crisply impressive than Superfine Linen Record, "Canada's Finest Bond".

It has become the accepted stationery of large corporations... the safeguard of millions that are locked in the careful words of deeds, contracts, conveyances, policies and other legal instruments that will affect the lives and fortunes of unborn generations.



SUPERFINE LINEN RECORD

is a 100% clean, new-rag paper. Specify this superfine bond to your printer, lithographer or engraver.

ROLLAND PAPER COMPANY LIMITED

High Grade Paper Makers Since 1882

MONTREAL

Branch Office: TORONTO, Ont.

Mills at ST. JEROME & MONT ROLLAND, Que.