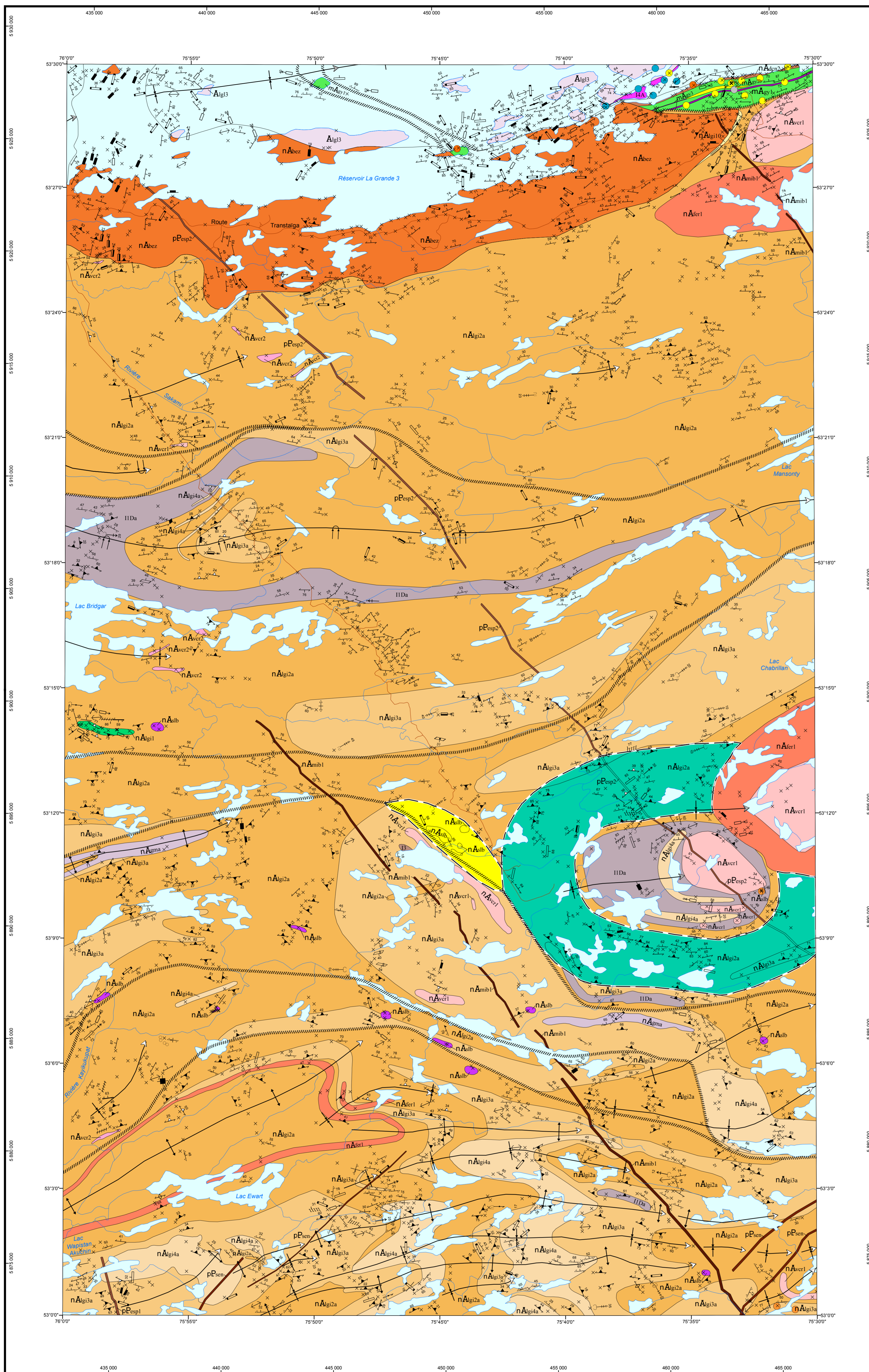


Geology of The Lake Ewart Region, La Grande and Opinaca Subprovinces, East of Radisson, Eeyou Istchee James Bay, Quebec, Canada



STRATIGRAPHIC LEGEND

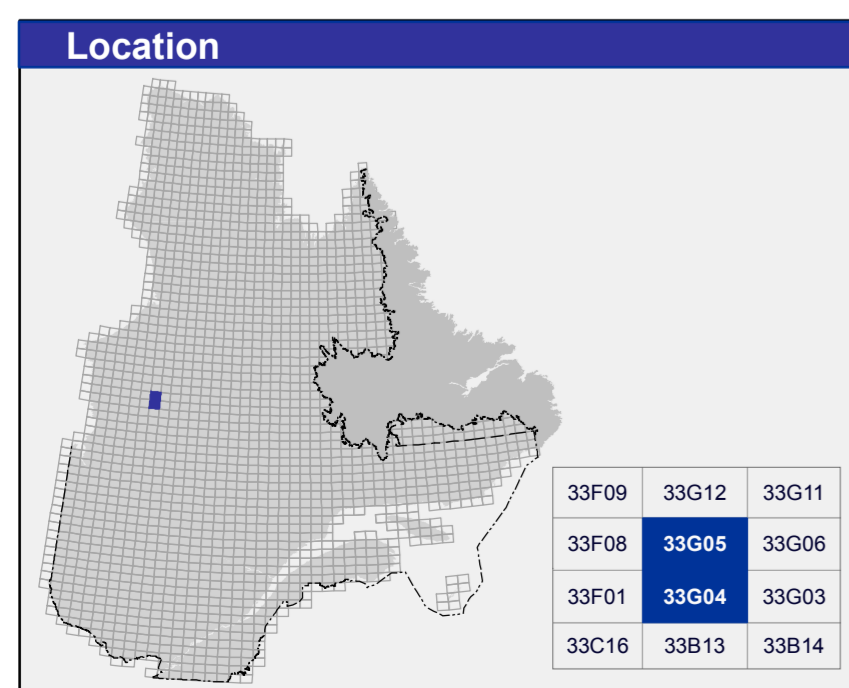
- PALEOPROTEROZOIC**
- Lac Esprit Dykes (pEsp1, 2069 ± 1 Ma, Hamilton et al., 2011; pEsp2, 2090 Ma, preliminary age, Hamilton, personal communication, 2016)
 - nEsp1a Diabase of gabbroic composition, NW-SE oriented
 - nEsp2a Diabase with gabbroic to gabbroic composition, orientation varying from NW to NNE
 - Senneterre Dykes (221 ± 4 Ma and 2216 ± 4 Ma, Buchan et al., 1996; Davis et al., 2016)
 - nSen Diabase of gabbroic composition
- NEOARCHAIC**
- Mistassini Dyke Swarm (2515-2503 Ma, Hamilton 2009; Davis et al., 2018)
 - nMist Diabase
 - Vieux Comptoir Granitic Suite (2683-2613 Ma, David, personal communication, 2017; Bogatu and Huot, 2016)
 - nVcr1 Pegmatitic K-feldspar-biotite ± muscovite ± garnet granite
 - nVcr2 Biotite-magnetite granite ± hornblende ± epidote, massive to slightly foliated
 - Labois Suite (>2619.6 ± 1.9-1.4 Ma, David et al., 2011)
 - nLab Olivine ± phlogopite metabasalt, commonly orthopyroxene porphyroblastic
 - Bezier Suite (2712.3 ± 5.8 Ma, David, personal communication, 2017)
 - nBez Quartz monzonite and granodiorite, K-feldspar porphyritic
- OPINACA SUBPROVINCE**
- Marjout Gneiss (2689 ± 4 Ma, David, personal communication, 2017)
 - nMar Biotite ± hornblende ± magnetite tonalitic gneiss, foliated to banded
 - Féron Suite (2710.4 ± 2 Ma, Augland et al., 2016)
 - nFer Hornblende-biotite-magnetite quartz monzonite, K-feldspar porphyritic
 - Lagliche Complex (>2712-2627 Ma, Augland et al., 2017; Morfin et al., 2013)
 - nLag Polygenic conglomerate
 - nLag4a Biotite ± garnet paragneiss diatexite, containing more than 50% mobilisate
 - nLag3a Biotite ± garnet paragneiss metatexite, containing 10-50% mobilisate
 - nLag2a Biotite ± garnet paragneiss diatexite, containing less than 10% mobilisate
 - nLag1 Amphibolite derived from basalt, mostly pillow
- LA GRANDE SUBPROVINCE**
- Duncan Intrusions (2716-2709 Ma, Davis et al., 2005; Goutier et al., 1998a, 1999a)
 - nDm Hornblende-biotite diorite
- ARCHAIC**
- Langelier Complex (Alg1 : 2796-2788 Ma, Goutier et al., 1999b; David, personal communication, 2017)
 - nAlg1 Biotite or biotite-hornblende tonalite, foliated to gneissic
- MESOARCHAIC**
- Guyer Group (2620-2806 Ma, Goutier et al., 2002; David et al., 2011, 2012)
 - nGy Iron formation
 - nGy2b Gneiss derived from intermediate and felsic volcanics
 - nGy1 Amphibolite derived from basalt

LITHOLOGIC LEGEND

- NEOARCHAIC**
- nDa Biotite-magnetite tonalite and granodiorite
 - nB Metamorphosed mafic intrusion
 - nH Biotite hornblende

- PROSPECTIVE ZONE FOR MINERAL EXPLORATION**
- nBe Beryllium
 - nAu Gold

- SHOWING AND DEPOSIT**
- Metallic Substance**
- Silver, Beryllium
 - Copper, Molybdenum
 - Gold, Uranium
- Symbols and abbreviations used on this map are described in publication DV 2014-06 of the Ministère de l'Énergie et des Ressources naturelles.



Metadata		Realization	
Geodetic reference frame :	Ellipsoïde GRS 80	Geology :	Jean Goutier et Joséphine Gigon (2016)
Geodetic reference system :	NAD 83 compatible with the world geodetic system WGS 84	References :	Allard, P. (2008) - GM 64342 Groux, M. (1976) - GM 34117 Goutier, J. et al. (2002) - RG 2001-15 Johnson, M. (1996) - GM 66869 Lafliche, M. R. et al. (2004) - GM 61670 Lalancette, J. et al. (2008) - GM 64463 Mine d'Or Virginia, 1995, carte inédite Osborne, B. S. (1995) - GM 55392 Sharma, K. N. M. (1975) - RG 184 Tremblay, P. et al. (2009) - GM 64464 Turgeon, D. et al. (2007) - GM 63308
Cartographic projection :	Universal Transverse Mercator (UTM), zone 18	Technical assistance :	Kathleen O'Brien, Pierre-Thomas Poulin, Karine Allard
Original longitude :	75°45'	Production :	Ministère de l'Énergie et des Ressources naturelles Direction générale de Géologie Québec
Original latitude :	0°	Distribution :	Ministère de l'Énergie et des Ressources naturelles Direction de l'Information géographique du Québec
Sources		Organization	
Data		Ministère de l'Énergie et des Ressources naturelles	
Base de données topographiques et administratives (BDTA 25k)		SAGÉOM	
		Système d'information géographique du Québec	

BG 2018-10-C01

Map of the Bulletin géologique : <http://gq.mines.gouv.qc.ca/bulletins-geologiques/lac-ewart/>

To obtain the most recent data for this region, we suggest that you consult the geomatics products of Québec's Geomatics Information System (SIGÉOM)

Bulletin géologique

SAGÉOM
Système d'information géographique du Québec