

# Journal

2013 · 2014 | ENGLISH VERSION



PARC NATIONAL DE  
**PLAISANCE**







# THE MUST-DOS



## ► *SENTIER DE LA CARRIÈRE* | NEW

Good news! The summer of 2013 will see the launch of a bike path that will finally link the two areas of the park - Presqu'îles and Thurso - giving access to two picnic areas. In summer, every day take advantage of our pontoon shuttle between these two areas. Once you are dropped off at the destination with your bike, you will need to ride about 10 kilometers to return to your starting point. (More details on page 11)



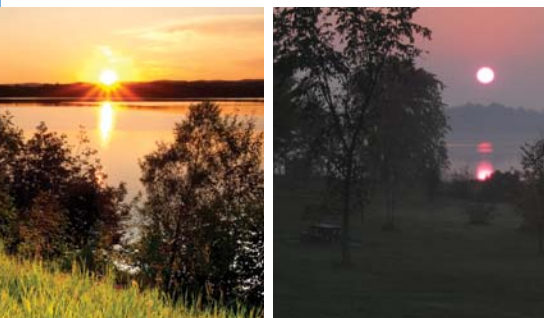
## ► PONTON RIDE TO *CHUTES DU MOULIN*

Here is a nice pontoon ride that takes you to the foot of the magnificent *Chutes du Moulin*, in Plaisance, where the over 60 meters of altitude offers quite an impressive view. Then, take advantage of a half hour break and follow the trail allowing you to see the falls more closely. (More details on page 11)



## ► *LA ZIZANIE-DES-MARAIS* TRAIL

This trail with a length of 1 km and 300 m of floating walkways brings you to the heart of one of the most beautiful marshes of the park, a unique place to observe a variety of wildlife. Undoubtedly one of the finest trails, allowing you to experience the best of what Plaisance has to offer.



## ► SUNSET AND SUNRISE

A well kept secret of the park are the magic sunsets on the *Baie de la Pentecôte* which are best admired from the Desjardins picnic area or from *La Zizanie-des-Marais* trail parking lot. But there is an even better kept secret: the sunrises on the Baie de la Pentecôte! To view them at dawn, go to the Dollard-des-Ormeaux picnic area.



## ► SEA KAYAKING

A great way to discover the park is certainly by hiking through the wetlands. Enjoy the lush marshes and sea-grass throughout our various kayak accessible paths. Ranging from periods of 1 hour to half a day, these small tours are perfect for beginners. Learn more at the Discovery and Visitors Center. (Rentals are available on location)

# WELCOME

## THE COUNTRY OF FLOATING GARDENS

Parc national de Plaisance is a region to discover, rich and colourful. Its diverse habitats and wetlands are home to a unique fauna and flora. You can, in a short time, move from one of those environments to another, allowing you to come into contact with natural elements which can be completely diverse and even unexpected. To access these wonders, consider, for example, *La Zizanie-des-Marais* trail, penetrating the heart of one of the most beautiful marshes of the park. It's from very close by that you can view the typical fauna of these habitats from a floating boardwalk (300 m). A new section of the Route Verte, which now connects the two areas of the park is also yours to discover. Named *Sentier de la Carrière*, you will see the Canada Goose, our animal emblem, in a more than giant format. In fact, a colossal structure more than 50 m x 70 m hiding there ... Head out and discover!

### ENTRY FEES VALID FROM APRIL 1, 2013 TO MARCH 31, 2014

CATEGORY OR GROUP	DAILY RATES	ANNUAL PARK CARD	ANNUAL NETWORK CARD
Adult (18 or over)	\$6.50	\$32.50	\$58.50
Child (6 to 17)	\$3	\$15	\$27
Child (0 to 5)	Free	Free	Free
1 adult with children 6 to 17	\$9.50	\$47.50	\$85.50
2 adults with children 6 to 17	\$13	\$65	\$117
Organized adults group	\$5.75	N/A	N/A
Organized youth group (aged 6 to 17)	\$2.50	N/A	N/A
School or student group	Free	N/A	N/A

Taxes included. Annual Park or Network card is valid for 12 months.  
The prices, terms and services mentioned in this journal are subject to change without notice.

## Your Safety : Your Responsibility



Outdoor activities can involve certain risks. Make sure that you have the skills and abilities required for the activity you choose. It is important to know the risks inherent to this activity, to respect your limits and to use appropriate equipment. For more information, we invite you to consult our Web site at [sepaq.com](http://sepaq.com).

## REGULATIONS



To contribute to improving the quality of the park experience, an entry fee was established by the government. You must always carry your receipt or your annual card during your visit.



To preserve the natural riches for future generations, it is prohibited to remove natural elements (animals, plants, dead wood, rocks, etc.).



The flora is sensitive to being trampled. If we multiply the impacts of thousands of visitors, it's easy to understand why it is mandatory to stay on the hiking trails.



Nature exhibits exemplary equilibrium. The animals find everything they need to eat here, and that is why feeding wildlife is prohibited. In this respect, it is also prohibited to leave food or garbage unsupervised. Keep them in your car.



Domestic animals are prohibited in Québec's national parks. But guide dogs and service dogs accompanied by their foster families are admitted. However, these dogs must be easily identifiable, wearing the Mira scarf or harness. Those in charge of the animal must carry the foundation's letter of accreditation.



It's great to enjoy an authentic natural environment that is clean and healthy! Carry out your garbage, leave it in the containers provided, and take home any harmful substances, such as soap, oil, combustibles or pesticides.



For the preservation of the milieu and for your safety, only a certain number of activities are allowed in these parks. Plan your visit and first check the list of activities that are allowed in the parks you plan to visit.

# FOR YOUR ENJOYMENT



## THE PARK IS OPEN YEAR ROUND FROM SUNRISE TO SUNSET

### Discover and Visitors Center

Reception and rental desk, exhibition, boutique and picnic area

### Schedule

From April 26<sup>th</sup> to June 14<sup>th</sup> and from September 2<sup>nd</sup> to October 14<sup>th</sup>:

Sunday to Thursday: 9 a.m. to 4:45 p.m.

Friday and Saturday: 8 a.m. to 10:00 p.m.

From June 15<sup>th</sup> to September 1<sup>st</sup>:

Daily from 8 a.m. to 10 p.m.

### Equipment Rentals

By the hour, half day or full day:

- Canoe
- Rowboat
- Bicycle
- Kayak
- Electrical motor
- Binoculars



## BATHING

The pool is located in the camping area. From June 22<sup>nd</sup> June to August 25<sup>th</sup> and the weekend of August 31<sup>st</sup>:

### Pool schedule

10 a.m. to noon, 1 p.m. to 5 p.m., 6 p.m. to 7:30 p.m.

### Cost

Adult \$6.09

Child \$3.04

(Park entry fee is obligatory)

FREE for lodging customers, upon presentation of your overnight access fee (invoice)

## ACCOMMODATION

### Campground

(With or without services)



### Huttopia tent and tent trailer

(Ready-to-camp)



### Cabin and yurt



For more information on the services we offer and pricing, please visit our reception desk at the Discovery and Visitors Center or visit our website: [www.parcisquebec.com](http://www.parcisquebec.com)



## Huttopia

## A PARCS QUÉBEC'S EXCLUSIVE!

Discover the **Huttopia tent**, a simple and comfortable way to discover the joys of camping without all the lugging.

Each unit includes:

- two big beds
- supplementary heating and lighting
- a propane-operated warming tray and a mini-fridge
- everything you need to prepare meals

### 2013 SEASON

80 new tents

### 2 new destinations:

- Îles-de-Boucherville
- Lac-Témiscouata

LOW SEASON <sup>(1)</sup>  
\$99/night

HIGH SEASON <sup>(2)</sup>  
\$116/night

Capacity of 5 people (max. 4 adults)

(1) From Sunday to Thursday until June 20, 2013 and from September 8, 2013.

(2) Fridays, Saturdays, holidays and every day from June 21, 2013 to September 7, 2013. Taxes and entrance fee not included

Online reservation: [parcsquebec.com/huttopia](http://parcsquebec.com/huttopia)



# DISCOVERY ACTIVITIES

Please note : activities offered in French only.

## LEGEND



**Observation** | FREE



**Talks** | FREE



**Guides Tours** | FREE

### Guided Rabaska Canoe Tours

Bayous: \$8.26/adult, \$4.78/child (8 to 17 years old)

Kitchissippi: \$11.31/adult, \$5.65/child (16+)



Starting point: see activity description.  
Necessary to reserve at the Discovery and Visitors Center at least 1:00 before activity starts.

24 people capacity

### Cruise

\$18.26/adult, \$9.13/child (3 to 17 years old)



Starting point: Discovery and Visitors Center  
Necessary to reserve at least 1:30 before activity starts. 40 people capacity

*The prices, terms and services mentioned in this newsletter are subject to change without notice.*

## DISCOVERY ACTIVITIES FACILITATED BY A NATURALIST PARK WARDEN



### Ponds and their surprises

During the spring migration, the ponds on Grande-Presqu'île reward visitors with many birding surprises! Come and meet our park wardens and passionate birders. Use a telescope to discover the "newcomers" of the day. Who knows, you may even spot some rare species in the Park!

Location: Les Étang's lookout (Grande Presqu'île)



### Nature cruise

There are a thousand and one ways to explore a park. This cruise will unveil many of the riches of Parc national de Plaisance to you, in a golden moment filled with tales of nature and humanity.

Starting point: Discovery and Visitors Center.

Reservation required | \$



### Mysterious turtles

Turtles in the Park? Yes indeed! Come meet a park warden who will introduce you to the various species found here and give you some tips on how to spot them.

Location: Swimming pool parking lot



### Tracking down beavers

The Parc national de Plaisance is home to many families of beavers. Come on a walking tour of their habitat. This huge rodent may even make an appearance. Take the opportunity to observe its lodge and other signs of its presence.

Location: Zizanie-des-Marais trail parking lot



### Take a break at La Zizanie

The Zizanie-des-Marais trail is a perfect location for observing the Park's flora and fauna. Benefit from the presence of a park warden to obtain answers to your questions and explore one of the most fascinating habitats in the Park

Location: Floating walkway of the Zizanie-des-Marais trail



### Explore the bayous

A ride in a rabaska canoe is the ideal way to explore our floating gardens. Discover our "water world" in the company of a park warden, who will guide you across the waters and help you appreciate its distinctive animal and plant life. For aged 8 and up.

Location: Campground docking area.

Reservation required | \$



### Kitchissippi

Kitchissippi: "Where waters abound." Paddle into adventure in a rabaska canoe on the majestic Ottawa River, which will share some of its secrets with you. Taste some local delicacies during a well-earned rest. For ages 16 and up.

Starting point: Discovery and Visitors Center.

Reservation required | \$



### Fishing for mussels!

Following a brief family activity of "fishing" for mussels, let a park warden help you better understand these tiny indicator species, which monitor the health of our water bodies for us. Be prepared for water up to your knees!

Location: Desjardins picnic area



### Did you know that groundhogs climb trees?

How could we ignore our famous mascot? Learn all about this little mammal, which is very abundant here, during a short talk accompanied by a visit to its home. For the whole family!

Location: Swimming pool parking lot





**MIGRATION SPECIAL** | from April 13 to 28

ACTIVITY	SATURDAY	SUNDAY
<b>Ponds and their surprises</b>	10 a.m. to noon and 1 to 3 p.m.	10 a.m. to noon and 1 to 3 p.m.

**SPRINGTIME** | from May 18 to June 16

ACTIVITY	SATURDAY	SUNDAY
<b>Mysterious turtles</b>	2:30 p.m. to 3:15 p.m.	-
<b>Nature cruise</b>   \$	6:30 p.m. to 8 p.m.	-
<b>Take a break at La Zizanie</b>	-	1:30 p.m. to 2:30 p.m.

**SUMMER** | from June 22 to September 1<sup>st</sup>

ACTIVITY	SATURDAY	SUNDAY	MONDAY	TUESDAY	WEDNESDAY	THURSDAY	FRIDAY
<b>Explore the bayous</b>   \$	-	-	-	-	-	-	9:30 a.m. to noon
<b>Initiation au kayak de mer</b>   \$	-	-	-	9 to 11:30 a.m.	-	9 to 11:30 a.m.	-
<b>Kitchissippi</b>   \$	9:30 a.m. to noon	-	-	-	9:30 a.m. to noon	-	-
<b>Did you know that groundhogs climb trees?</b>	1:30 to 2:15 p.m.	-	-	-	-	1:30 to 2:15 p.m.	-
<b>Fishing for mussels!</b>	-	10:30 to 11:30 a.m.	-	-	1:30 to 2:30 p.m.	-	1:30 to 2:30 p.m.
<b>Nature cruise*</b>   \$	-	-	-	-	7 to 8:30 p.m.	-	-
<b>Mysterious turtles</b>	-	2 to 3 p.m.	-	2 to 3 p.m.	-	-	7 to 8 p.m.
<b>Tracking down beavers</b>	7:30 to 8:30 p.m.	-	-	-	-	7:30 to 8:30 p.m.	-

\* As of August 23: 6 p.m. to 7:30 p.m.



**NEW!**  
**NOT TO BE MISSED!**

**Introduction to sea kayaking**

The sea kayak is the perfect choice for exploring the wetlands and lush greens of the park. This activity will allow you to discover a safe form of navigation and also allow you to feel as one with the water. Accompanied by an experienced nature park warden, you will discover the secrets of the river, of its bays ... and of the paddle.

**Departure**

Discovery and Visitors Center  
\$40 per person. 14 years + (Reservation required)



# CONSERVATION PROJECTS

## PARTICIPATE!

For a closer look at the research projects or monitoring, or even to participate...

Please note : activities offered in French only.

For more information on these special events, visit the Discovery and Visitors Center. Priced activities and booking required.

### On the trail of turtles

Pontoon and bike ride to a turtle nesting site. We will explain the projects that are being conducted on these strange reptiles and you will witness the lifting of nets in the context of an annual monitoring. | June 1<sup>st</sup> and 8<sup>th</sup>



### Listening to bats!

This workshop begins with a presentation on the mysterious world of bats followed by an introduction to ultrasound detection equipment. Then we go on location where we try to see, and above all, hear them! Then back inside to see all the results provided by the analytical tools. A unique outing not to be missed! | JUNE-JULY



### Archaeologist for a day

Participate in real archaeological excavations at the park with the Outaouais archaeological research group. This activity is offered as part of Quebec Archaeo Month. | AUGUST



## SEVERAL RESEARCH AND MONITORING PROJECTS ARE CONDUCTED ANNUALLY AT THE PARK. HERE ARE TWO THAT ARE PARTICULARLY NOTEWORTHY:

### Under surveillance!

Small colonies of water chestnut (*Trapa natans*), a highly invasive plant, were discovered at the end of the summer in one of the most beautiful wetlands of the park, the *Baie Noire Ouest*. This floating plant, with an extraordinary mode of reproduction could end up covering the entire environment that it colonizes and cause a lot of damage to the existing flora and fauna in addition to disrupting water activities.

The park team will roll up their sleeves this summer to try to eradicate and prevent its spread. We will keep you informed of the progress of this work.

For more information, see the article on this topic on our blog: [www.parcsquebec.com/blogue](http://www.parcsquebec.com/blogue)



### In search of Fort de la Petite-Nation

Did you know that the territory of the Parc National de Plaisance was one of the cradles of the colonization of Ottawa? For two years, the GRAO (Outaouais Archaeological Research Group) have been conducting excavations, and the results seem to confirm the discovery of the house of the Petite-Nation that Joseph Papineau built around 1805 for the foundation of his lordship. Moreover, this was the same place where a trading post was established in the late 18<sup>th</sup> century and was called Fort de la Petite-Nation. Further excavations will be conducted this year to learn more! A team from Université Laval will also continue to update evidence of occupation dating back more than 5000 years!



# BUT WHAT IS IT?



CERTAIN NATURAL PHENOMENON OBSERVED IN THE PARK EACH YEAR HEIGHTENS THE CURIOSITY OF VISITORS. HERE ARE SOME OF THE MOST INTRIGUING:



The small mounds that we see in large numbers in the fields are black field ant nests (*Formica glacialis*), a common species.



Well, yes, it is an animal, or rather millions of microscopic critters, freshwater bryozoans (*Pectinella magnifica*), agglomerated into a colony. This gel structure offers them both protection and support. These organisms act as a filter, and good news, their presence is a sign of good water quality!



There aren't only spiders that make webs in the trees! Some caterpillars or so-called "tent caterpillars" also create this type of shelter from predators, parasites and from the weather. At the park, we often see Eastern tent caterpillar shelters (*Malacosoma americanum*); a species that follows a cycle of abundance over several years. Although seen in large numbers in some years, they rarely endanger the trees on which they settle.



**Have you seen?**

**The bird with the white back!**

When driving through the park, it's not uncommon to see birds with a white rump, flying off from the ground. This is the Northern Flicker. Fond of ants, this bird is one of the few species of the woodpecker family to feed on the ground.

## ALLOW YOURSELF TO BE GUIDED BY NATURE



Parc national de la Jacques-Cartier  
© Luc Robitseau

The outfitters, members of Aventure Écotourisme Québec, in collaboration with the Sépaq, offer you several stays and guided activities specially conceived to have you discover exceptional natural spaces.

AEQ groups together more than one hundred producers in adventure tourism and in ecotourism that join forces to offer you high-quality products.

Consult the Association's website for planning your guided activities in Sépaq's national parks.

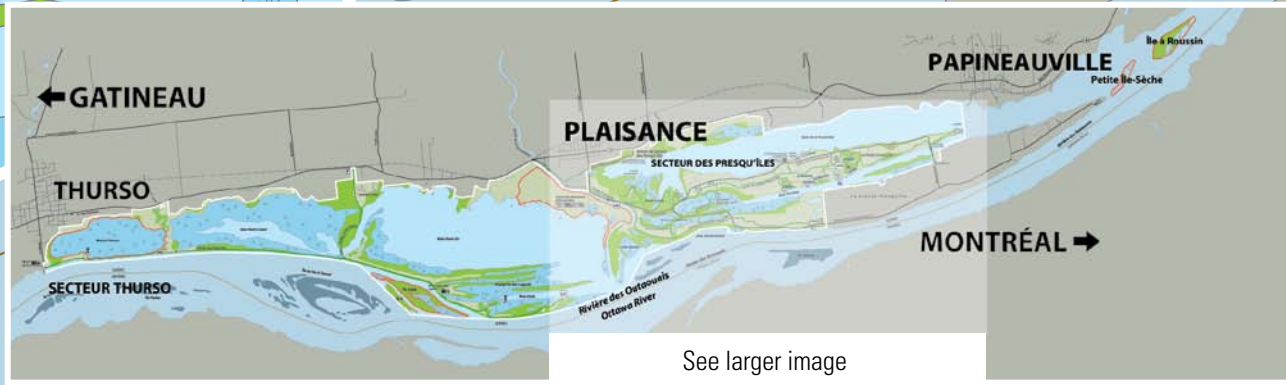
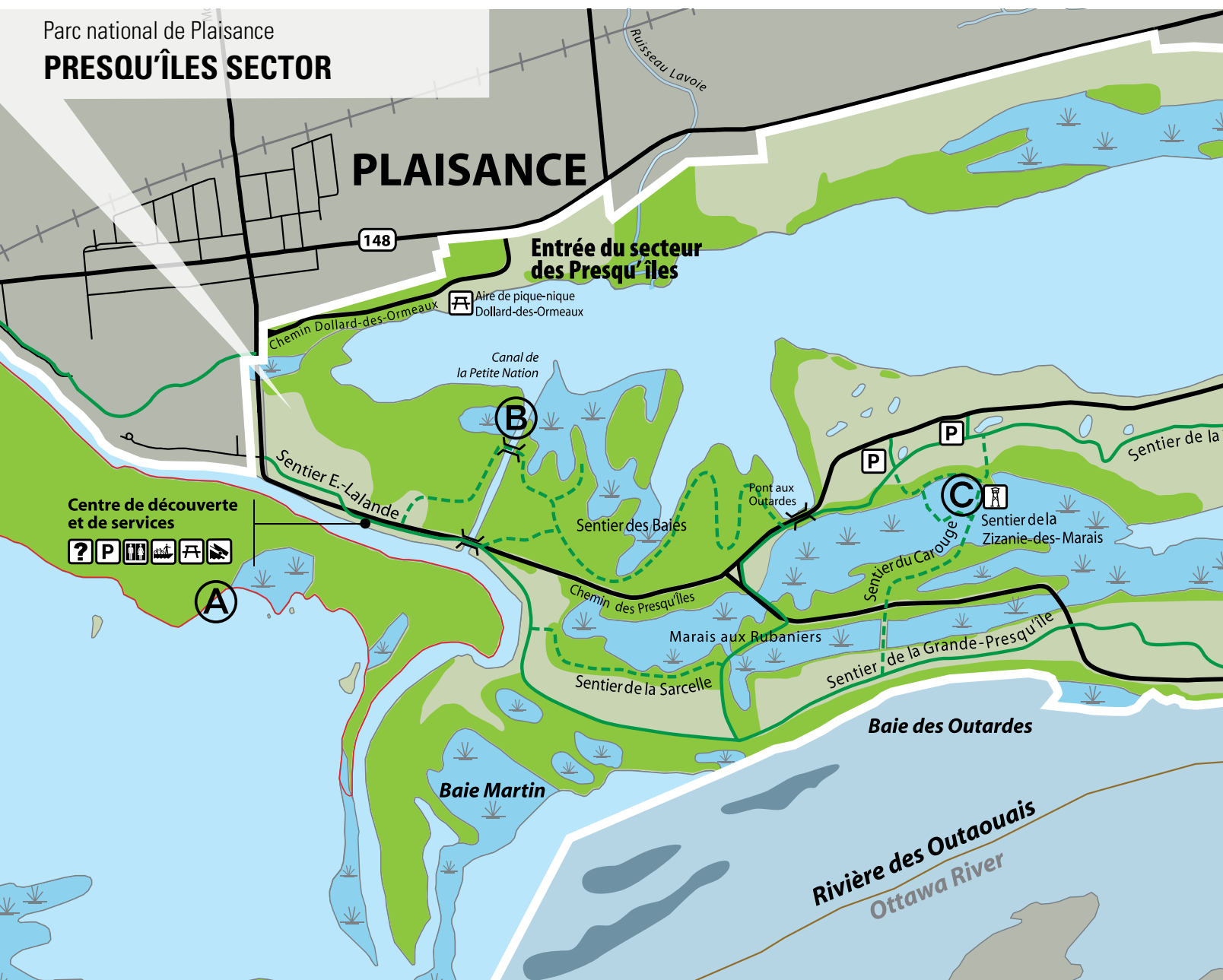
RÉSEAU Sépaq



[www.quebecadventure.ca](http://www.quebecadventure.ca)



Parc national de Plaisance  
**PRESQU'ÎLES SECTOR**

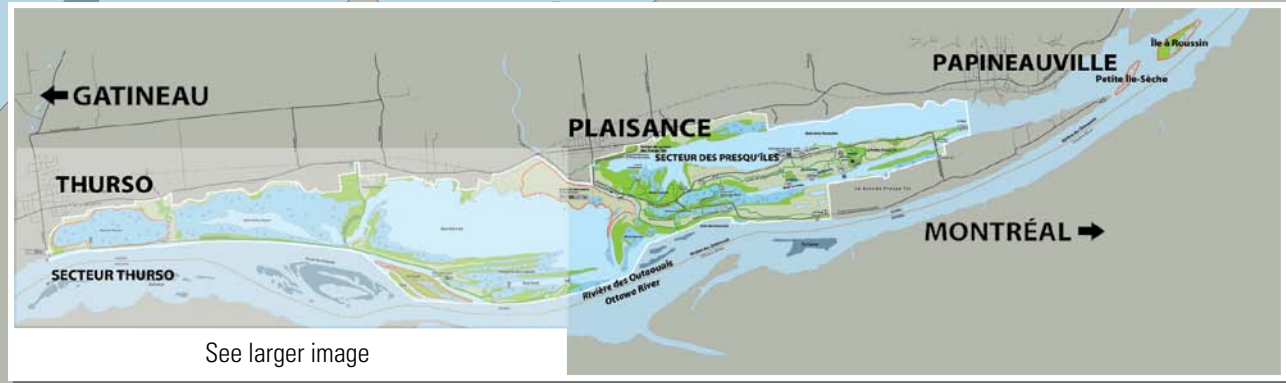


See larger image





Parc national de Plaisance  
**THURSO SECTOR**

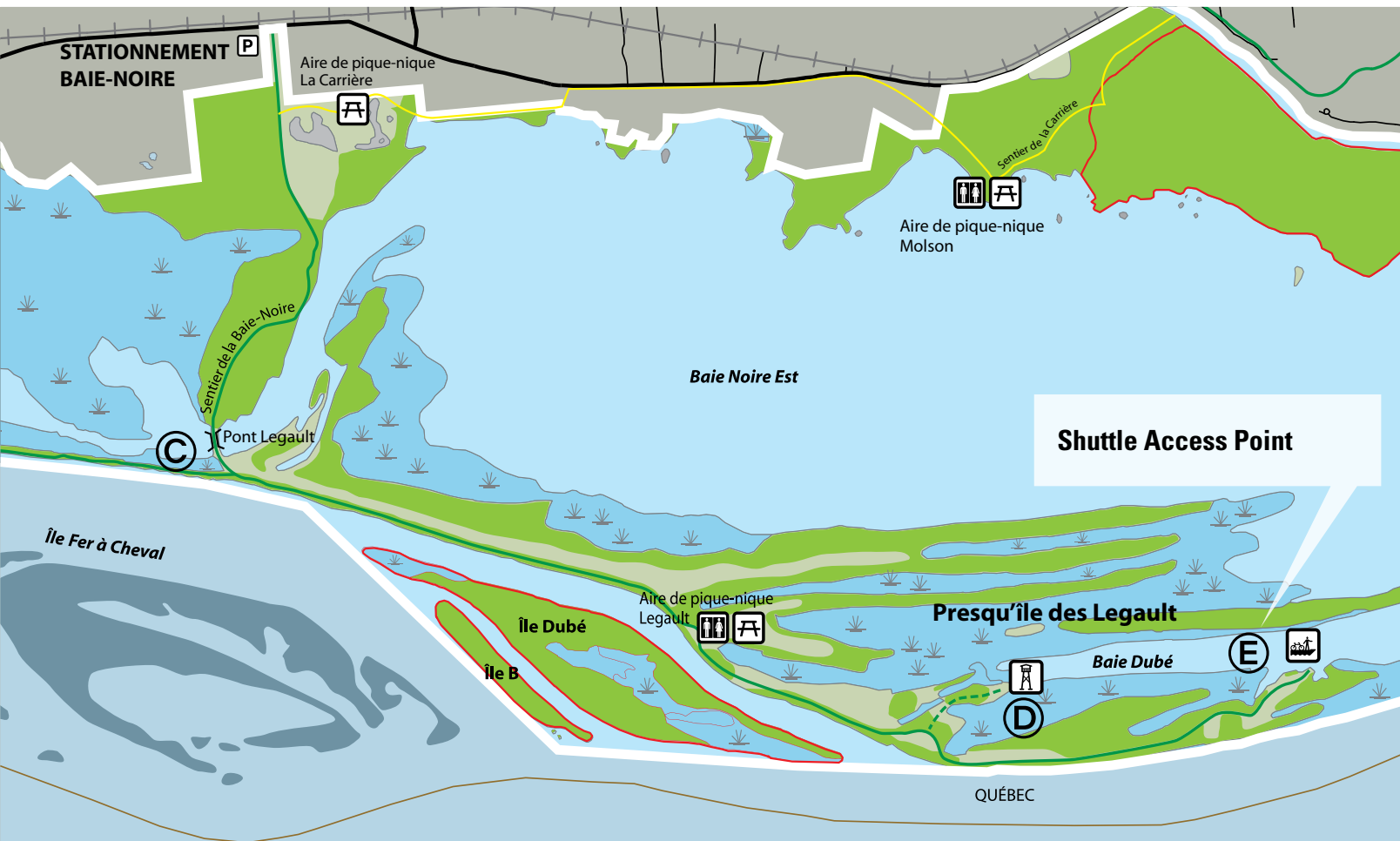


See larger image



- |                   |   |                   |
|-------------------|---|-------------------|
| Information       | Parc's Boundaries   | Open Water        |
| Observation Tower | Paths   | Wetlands          |
| Boatlaunch        | Bridges   | Open Fields       |
| Toilet            | Hiking Trails   | Forests           |
| Picnic Area       | Biking and Hiking Trails  | Preservation Zone |
| Parking           | New!<br><i>Sentier de la Carrière</i><br>(biking and hiking trails) |                   |
| Ferry             |   |                   |





## CLIMB ABOARD THE WESKARINI!

All departures are from the Discovery and Visitors Center.

### Shuttle for cyclists and bicycles

Crossing time to the area of Thurso: 25 minutes  
 You then return by bicycle (10 km - 90 minutes)  
 Price: \$8.70/adult, \$6.09/child, \$22.61/family

### Pontoon ride to the *Chutes du Moulin*

You go ashore for half an hour to see the falls up close.  
 Duration of activity: 1 h 30  
 Price: \$15/adult, \$10/child, \$40/family

### Schedule

#### May 18<sup>th</sup> to June 16<sup>th</sup>

Saturday and Sunday

**Shuttle:** 9 a.m.

**Pontoon ride:** 10 a.m., 1 and 3 p.m.

#### September 7<sup>th</sup> to October 14<sup>th</sup>

Saturday and Sunday

**Shuttle:** 9 a.m.

**Pontoon ride:** 10 a.m., 1 and 3 p.m.

#### From June 22<sup>nd</sup> to September 2<sup>nd</sup>

**Shuttle:** every day, 9 a.m.

**Pontoon ride:** every day, 10 a.m., 1 and 3 p.m.



# FISHING AT PARC NATIONAL DE PLAISANCE

The Ottawa River is home to more than fifty species of fish including several so-called sport fish. Thus, the park is an ideal place for fishing.

## 2013 fishing season catch limits

SEASON	TYPE	CATCH LIMIT
April 1 <sup>st</sup> 2013 to March 31 <sup>st</sup> 2014	Bullhead	Unlimited
	Yellow Perch	50
	Black crappie	30
May 17 <sup>th</sup> 2013 to March 31 <sup>st</sup> 2014	Pike	6
	Walleye	5
June 14 <sup>th</sup> 2013 to November 30 <sup>th</sup> 2013	Muskellunge	1
June 15 <sup>th</sup> 2013 to October 31 <sup>st</sup> 2013	Lake Sturgeon	1
June 21 <sup>st</sup> 2013 to November 30 <sup>th</sup> 2013	Bass	6

*This table relates to the part of the Ottawa River, which is located in the territory of the park, and to part of the Petite Nation River which is located south of Highway 148.*



### ! Return to water is compulsory for the following species:

**Muskellunge:** 137 cm or less

**Lake Sturgeon:** 106 cm or more

**Walleye:** Between March 1<sup>st</sup> and March 31<sup>st</sup> and between May 17<sup>th</sup> and June 15<sup>th</sup> - Walleye of 40 cm or more must be returned to the water.

### ! Restrictions to the Legault bridge

Fishing is allowed within a 30 m radius of the bridge from June 22<sup>nd</sup> to November 30<sup>th</sup>, 2013. Outside of this period, fishing is **strictly prohibited (all species)**. There are signs on both sides of the bridge and white buoys in the water to help identify this area.

### ! Please note

You must have your provincial fishing license and your park entry fee with you at all times. To protect the park's natural environment, we ask that you fish from the designated areas (picnic areas). There are 3 docks available for putting your boat in the water.

## DISCOVER THE FONDS PARCS QUÉBEC COLLECTION AND DO YOUR PART FOR CONSERVATION!

One dollar will be donated to Fonds Parcs Québec for each item purchased.

Donations to Fonds Parcs Québec serve to support the conservation of Québec's national parks. Through the funding of research, knowledge acquisition, and species population monitoring and inventory, vital data are obtained to particularly safeguard plant and animal species.

The collection is available at the Boutique Nature shop.

**BOUTIQUE  
NATURE**  
Parcs Québec

**FONDS**  
Parcs Québec  
fondsparcsquebec.com



# LOCAL PARTNERS

## Thurso



The municipality is proud to participate in the development of the greeting centre for the new Thurso Sector.

161, Galipeau, Thurso, Qué. J0X 3B0 | (819) 985-2701 | www.ville.turso.qc.ca

## Plaisance



Our municipality is pleased to contribute to the success of Parc national de Plaisance.

274, rue Desjardins, Plaisance, Qué. J0V 1S0 | (819) 427-5363 | www.ville.plaisance.qc.ca

**Casse-Croûte & Crèmerie  
PATALOU**  
Route 148, Plaisance, QC  
Propriétaires : Francine & Marcel  
Tél (819) 427-5884

Services sanitaires  
**RICHARD LANTHIER** (819) 983-2830

Location de bacs à déchets de toute grandeur  
25, rue Val Quesnel  
St-André-Avellin [Québec] J0V 1W0

**GARAGE**  
*Raymond Laliberté*  
À VOTRE SERVICE depuis 1976  
Eric Lauzon - Edith Chalut  
Propriétaires

(819) 427-5739  
51, St-Isidore  
Plaisance, (Québec)  
J0V 1S0

**BRANDSOURCE**  
AMEUBLEMENT  
*Desrochers*

Des gens de cœur et de passion depuis 40 ans à votre service!

229, rue Principale T 819 427-5111  
Plaisance, Qc F 819 427-8162  
J0V 1S0 www.brandsource.ca

**MARCHÉ M. MARTIN**  
73, rue Papineau  
Plaisance

**819-427-6935**  
NOUS LIVRONS

**GIANT TIGER** **TIGRE GÉANT**

Tora Papineauville Limitée  
144, rue Papineau

Papineauville, Québec  
J0V 1R0

## USEFUL PHONE NUMBERS

- CLSC St-André-Avellin: (walk-in emergency services) (health and social services) : 819 983-7341
- Fire Department: 310-4141
- Ambulance: 911
- Sûreté du Québec (Papineauville)
- (Quebec Provincial Police): 819 427-6269
- Poison Centre: 1 800 463-5060
- Info-Santé: 811

## GENERAL INFORMATION

Parc national de Plaisance  
1001 des Presqu'îles Road  
Plaisance (Québec) J0V 1S0  
Administration: 819 427-5350  
Information: 819 427-5334  
Reservations: 1 800 665-6527

Email: parc.plaisance@sepaq.com  
Website: www.parcquebec.com  
Photos: J.-M. Vallières, M. Dupuis, J.-F. Houle,  
J.-P. Huard, M. Bois, M. Côté-Bédard, J. Froidevaux,  
F. Fabianek, Jomegat, L. Gauthier, C. Lafond  
Graphic Design : Alterego



This document was printed on 100% recycled paper made in Québec, containing 100% post-consumption fibres and produced without using elementary chlorine. The inks used for this production contain vegetable oils.

Legal Deposit: 2013  
Library and Archives Canada

ISSN 1929-0799

# Le centre touristique du Lac-Simon, ➤ is a lot more than a beach!

It's also :



➤ 32 vacation cottages including  
12 new mini-cabins



➤ 35 Hékipia tents  
(Ready-To-Camp)



➤ Winter Activities  
(17 cottages for rent)

➤ Boating equipment rentals

➤ 400 campsites

➤ Mini-golf and entertainment