

FC  
2945  
L387L38  
1937

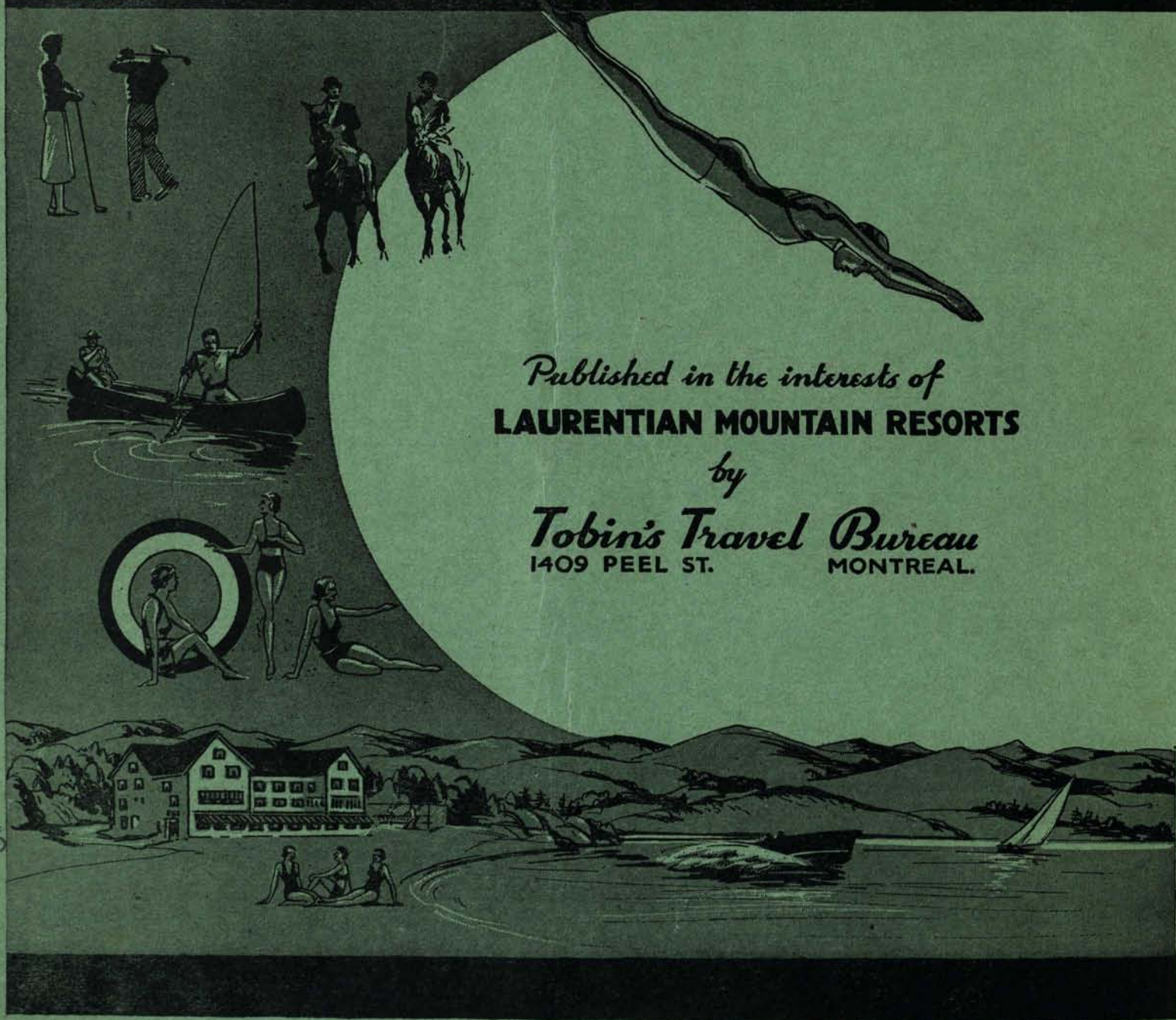


# LAURENTIANS ON PARADE



LAURENTIAN MOUNTAINS  
PROVINCE OF  
QUEBEC, CANADA.

*"Enjoy a vacation you will never forget"*  
In the **LAURENTIAN MOUNTAINS**



*Published in the interests of*  
**LAURENTIAN MOUNTAIN RESORTS**

*by*  
**Tobin's Travel Bureau**  
1409 PEEL ST. MONTREAL.

FC  
2945  
L387L38  
1937

# LAURENTIANS ON PARADE



Published by

*Tobin's Travel Bureau*

1409 Peel St.

Montreal

in the interest of the resorts located in  
the Laurentian Mountains.

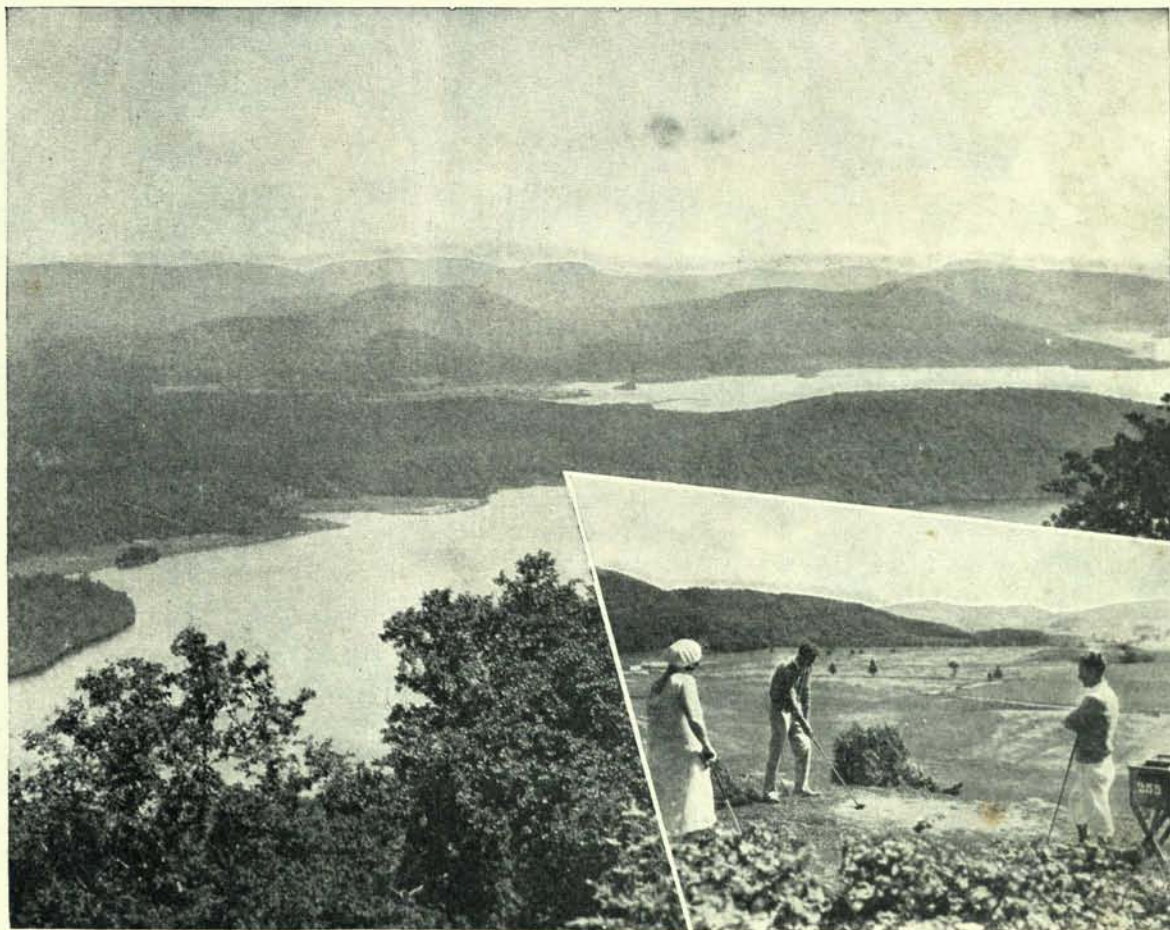
1937 Edition

## Greetings!

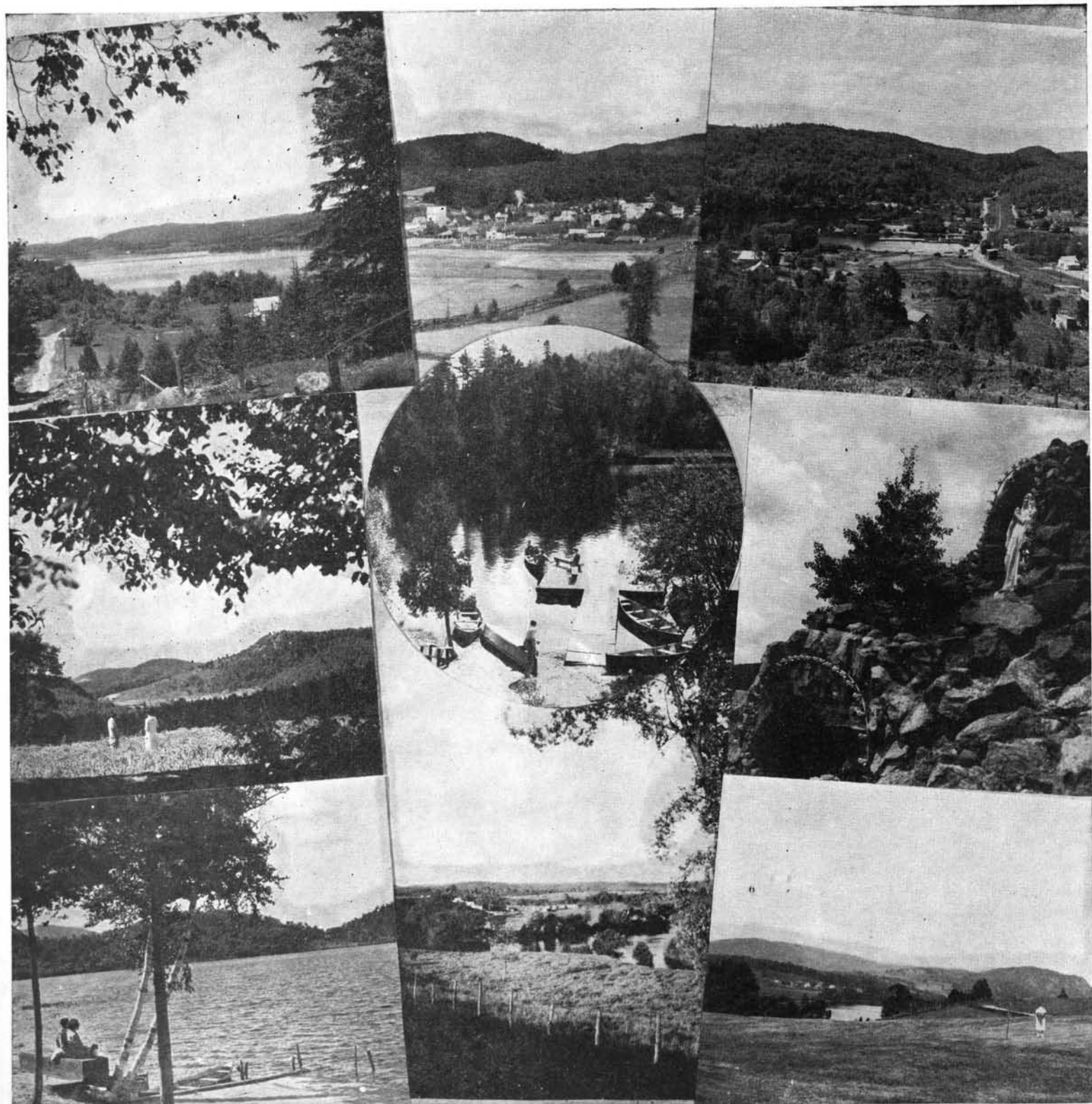
Every visitor likes to be greeted as a friend and to spend his vacation in a friendly atmosphere.

The object of this publication is to give you a complete picture of a wonderful all year Playground within easy reach either by Train, Motor, or Motor Coach.

Before you decide definitely on your plans for this year's trip—consider the Laurentians. There you will find a real friendly spirit and an infinite variety of vacation possibilities at rates to suit every purse.



Half-tone Illustration Courtesy Canadian Pacific Railway



Halftone Illustrations Courtesy Canadian National Railways.

Top Left: Beaver Lake—Top Center: Village of Morin Heights—Top Right: 16 Islands—Center Left: Rockaway Valley, Huberdeau—Center Oval: Beach at 16 Island Lake—Center Right: Famous Shrine at Huberdeau—Bottom Left: Typical Lake Scene—Bottom Center: Rouge River near Huberdeau—Bottom Right: Arundel Golf Course.



## Laurentians

### INVITE YOU



tennis



**Y**OU'LL never regret—not forget—your vacation in The Laurentians!

Exhilarating mountains, restful lakes, aroma of balsam, spruce and pine—and the cool climate send you home relaxed and renewed . . . and eager to come back again.

There is everything for every one in The Laurentians—fishing, swimming, sailing on large mountain lakes, camping, canoeing riding, hiking, golf and tennis. Quaint French villages and towns, with characteristic hospitality. Marvelous native foods, including chicken dinners, berry pies, and well-cooked fish, fresh from myriad lakes and streams. Spacious hotels and inns, camps, and inexpensive places offer you comfort and convenience.

You are invited to swim this Summer in the lovely lakes. Climb the wind-swept mountains. Sun yourself on the lake beaches. "Laze" for days or weeks at any of the comfortable vacation spots.

Motor through scenic splendor over hundreds of miles of splendid roads in picturesque valleys and over intriguing hills, which make motoring a pleasure in Canada's most attractive playgrounds.

If you are a fisherman, discover the sportsman's paradise in The Laurentians' forested lakelands and along its many rivers. All are richly stocked with fighting beauties.

On the threshold of the 1937 tourist season there is prevalent throughout The Laurentians a more pronounced confidence than has been in evidence since the commencement of the recovery movement in Canada.

The Quebec Government has realized the urgent need of improving the roads through this wonderful playground. New highways are being built, others are planned, and a general improvement in conditions is anticipated during the Summer.

And just so you can find what you want, where you want to go, and how to get there, LAURENTIANS ON PARADE has been prepared for you as a new guide in a perfect vacation.

Nature has been generous to The Laurentians and has made them ideal for recreation. The mountain range extends along the north shore of the St. Lawrence from the Straits of Belle Isle across the Province of Quebec, passing within two hours by railway or motor from Quebec City and approximately two hours out of Montreal.



Undulating terrain, studded with silver lakes, with winding streams that entrancingly mirror the green-topped forests, and holding diversified attractions for the visitor, with progressive towns, picturesque villages, and smiling



farms, linked by good motor highways—this is the welcome which the Laurentians offer tourists.

The Laurentians are older than the Rockies. Geologists say that they are even older than the Himalayas and that their formation is pre-Cambrian. Lying north of the St. Lawrence and Ottawa Valleys they cover more than nine-tenths of the Province of Quebec.

The Laurentians though among the oldest members of the mountain family are not difficult to climb as the general elevation is 1,500 to 2,000 feet, but their charm lies in the thrill of tramping over springy turf, while roaming the woods, plunging into a mountain stream, fishing in the lakes and pools and camping.

The Laurentians offer an escape from sweltering cities to cool Summer breezes, where one may enjoy golf or tennis in the morning, good fishing in the afternoon, and dance in the score of outdoor dancing pavilions in the cool of the evening. They also afford an opportunity to take delightful motor trips, canoe trips, along the interlinking lakes, and for picnic-site seekers there is an abundance of beauty spots.

Awaiting the sportsman are moose, deer, bear, wolves, partridge, snipe, woodcock, geese and ducks. There are countless lakes and many rapid streams where trout, bass, maskinonge, pike, pickerel, and in some places ouaniche afford splendid sport.

Partridge are found in the North and deer scattered over the entire district, but frequenting particularly the forest at some distance from the railway. Moose are found in the remoter regions, particularly in the splendid hunting territory to the north of Nominigue and Mont Laurier, though an occasional one has been shot as far south as Lac Tremblant.

Interesting outings may be enjoyed in The Laurentian district through Terrebonne, Argenteuil, and Labelle Counties, where fish and game may be had in abundance.

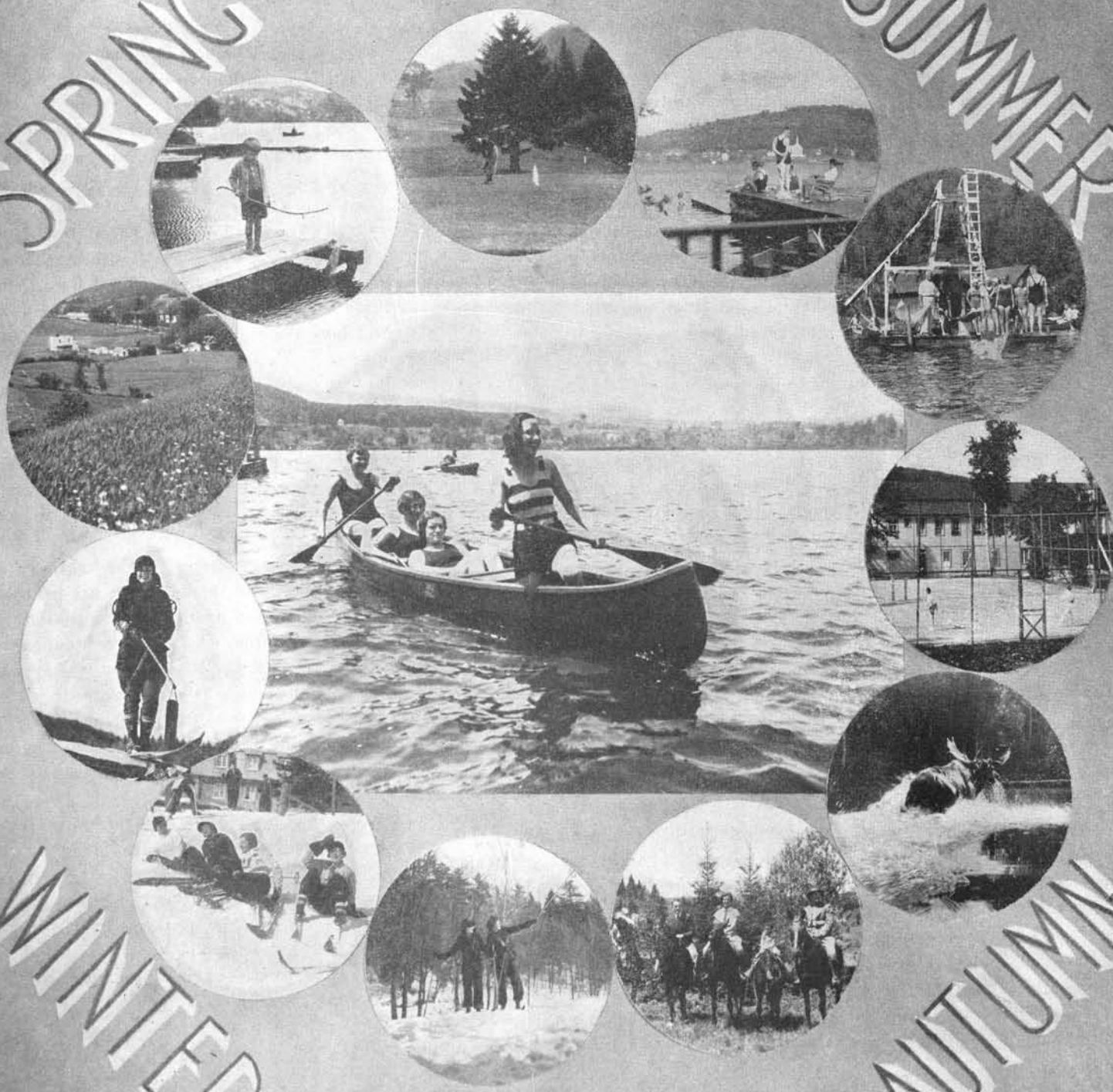
Terrebonne and Argenteuil being partly mountainous are rich in game of all sorts, there being deer, moose, bear, fox and small game in Terrebonne, while plenty of hunting is to be had in Argenteuil. Both counties are dotted with innumerable lakes and pools of water to tempt the angler, who is sure to be rewarded with good catches.

The field of activity open to the visitor is endless. For those who ride there are many intriguing bridle paths, which wend their way in and around quaint villages. Boating, bathing and aquatic sports are available in all the mountain districts. There are a number of golf courses and many splendid tennis courts.



SPRING

SUMMER



WINTER

AUTUMN



# Laurentians INVITE YOU



The invigorating mountain air, free from dampness, and the long hours of brilliant sunshine with cool nights to induce peaceful sleep, make any part of the Laurentians an ideal place for a bracing and rejuvenating holiday.

The Laurentian region is covered by a splendid system of good roads. Most of the leading Summer resorts in the mountains are served by first class train schedules over the Canadian Pacific and Canadian National Railways, while the Provincial

Transport Company also offers an excellent bus service between Montreal and the principal localities.

**LACHUTE, STE. AGATHE-DES-MONTS, ST. JOVITE**  
Lachute to Ste. Agathe des Monts, over Highway No. 30; Ste. Agathe to St. Jovite over Highway No. 11; and return to Lachute over Highway No. 31, then back to Montreal over Highway No. 8.

According to the Provincial Tourist Bureau the length of this tour is 210 miles.

Leaving Montreal the tourist passes through several prosperous settlements, where gardening and general farming are the principal occupations, although there are several small industrial plants in most of these localities.

Pont-Viau, Laval-des-Rapides, L'Abord-à-Plouffe, St. Martin, Ste. Dorothee, St. Eustache, (with its historic church which still bears the marks of shot from cannon fired during a fight between forces of "patriots" and "regulars" during the armed rebellion in Lower Canada in 1837-38); St. Augustine, Ste. Scholastique, and St. Hermas are the villages passed through. All these settlements are situated near lakes or rivers where fishing may be indulged in with marked success, and they are Summer resorts much frequented by residents of Montreal and tourists.

Lachute is a thriving town of 4,000 population, and an important industrial centre, containing pulp and paper mills, a textile factory, grist mills, silk factories, a foundry and other manufacturing plants. The town is situated in picturesque country.

Nine miles south of Lachute is situated the historic village of Carillon, the scene in 1660 of the heroic defence of a small fort by Dollard des Ormeaux, who, with sixteen whites and 50 friendly Indians, withstood for ten days the repeated onslaughts of 800 blood-thirsty Iroquois. Dollard and his gallant companions were killed, but their splendid deeds of valor discouraged the enemy and saved the young colony from utter destruction by the Redskins.

From Lachute the tourist follows Highway No. 30 as far as Ste. Agathe des Monts.

The superb mountainous country, partly wooded,



is a tourist region rich in every variety of natural resources and landscapes of opulent coloring. The tranquil surfaces of the numerous lakes and the impetuous currents of the streams are compliments to the many panoramas which pass in uninterrupted procession before the dazzled gaze of the tourist.

The tourist finally reaches Ste. Agathe des Monts, one of the best known and most popular Summer resorts in the Laurentians.

Built partly on the slope of a mountain and partly surrounding Lake des Sables, the circumference of which is eight miles, it is a place of striking picturesqueness and natural charm, and offers a variety of diversions.



From Ste. Agathe the tourist proceeds along Highway No. 11 to St. Jovite, a splendid, very popular resort, passing through the two picturesque villages of Ivry and St. Faustin. Both of these settle-

ments are located near numerous lakes and boast good hotels and first class tourist camps.

This trip is continued from St. Jovite through the Lake Maskinonge district to Arundel where the tourist takes Highway No. 31. An excellent golf course is situated at Arundel, which is only a little over a mile from the picturesque village of Huberdeau on the Rouge River.

Continuing along Highway No. 31 the tourist passes through Batesville, Weir, Lakeview, Lost River, Pine Hill, Dalesville, the enterprising town of Brownsburg, to Lachute, where Highway No. 8 leads to Montreal.

## MONTREAL, MONT-LAURIER, HULL

**T**HE second suggestion for a tour in The Laurentian District, as recommended by the Provincial Tourist Bureau, is from Montreal to Mont-Laurier, thence to Hull, over Highway No. 11, and return to Montreal via Highway No. 8. The total distance covered in 412 miles.

The tour may be varied by travelling from Montreal to Lachute, over Highway No. 8, thence Highway No. 31 to St. Jovite, or again from Lachute to Ste. Agathe via Highway No. 30, and continuing from either St. Jovite or Ste. Agathe to Mont-Laurier and Hull over Highway No. 11. It is merely a matter of choice since the distances are very much the same whichever route may be selected.

That portion of Highway No. 11 which leads from Mont Laurier to Hull lies through the very picturesque Gatineau Valley.





# Montreal INVITES YOU



## MONTREAL, STE. AGATHE, ST. DONAT

This tour covers a distance of 145 miles. The route from Montreal to Ste. Agathe has already been described in connection with another trip. From Ste. Agathe the road runs past Lac du Brulé, a fine sheet of water with good fishing, through the little settlement of Lanthier, and up to beautiful Lake Archambault, one of the finest lakes in the province, situated at an altitude of 1,284 feet above sea level, in a splendid setting of mountains.

The village of St. Donat is built on the shores of the lake and is a delightful place for a real rest in the "bosom of Nature". The lake offers every possible opportunity for all kinds of Summer sports, while fishing in its waters is always rewarded with a fine catch. St. Donat also boasts a splendid golf course.

From Lachute to St. Donat on Highway No. 30 the tourist passes through Lakefield, Morin Heights, St. Adolphe, and Ste. Agathe des Monts, and return by Highway No. 18 from St. Donat through Terrebonne to Montreal.

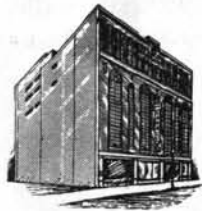
## ST. JEROME, PIEDMONT, VAL MORIN

After leaving Montreal on Route 11 the tourist passes through St. Elzear, a pretty little farming community; St. Rose, picturesquely situated on the banks of the River des Mille-Iles, and the town of Ste. Therese, an important agricultural and industrial centre, with a population of 6,500. Ste. Thérèse has a number of important manufacturing plants, a beautiful church, educational institutions, well conducted commercial establishments and good hotel and garage accommodations.

The motorist next passes through the village of St. Janvier, an essentially agricultural municipality.

St. Jerome is the largest industrial centre in the district north of Montreal. Its development is due to its ideal location on the Rivière-du-Nord, from which the hydro electric power is obtained for its many manufacturing plants. It is a prosperous community and it has a large number of educational and commercial establishments. Its population is over 9,000.

Shawbridge, Piedmont and Val Morin the next villages are pleasant Summer resorts with many beautiful lakes in the vicinity and are of importance as Winter sport centres.



Mansions Garage  
1460 GUY STREET



Royal Garage  
FOOT OF MCGILL COLLEGE AVE.



Drummond-Street Garage  
1414 DRUMMOND ST.

## C-I-C PARKING GARAGES

HEAD OFFICE: 1414 DRUMMOND ST. MONTREAL

Motorists taking the Saguenay trip from Montreal are officially recommended by the Canada Steamship Lines to drive to the Royal Garage where a uniformed chauffeur will drive them in their own car to the dock — store the car — and meet the boat on its return. A special rate is arranged. The C-I-C Parking Garages are official garages to the Royal Automobile Club.

For Road Emergency Service near Montreal telephone Ftzroy 8511.

## ARRIVING IN MONTREAL

Drive first to a C-I-C Parking Garage. Pick up a uniformed driver. There is no charge for him to drive you to your hotel or other destination and return your car to the garage for the night.

Daytime and evening parking:

1st hour 25c., each other 5c. — maximum 50c.

Overnight storage — \$1.00





Montreal  
INVITES YOU



## GUIDE

For The Purchase Of  
**FINE and ARTISTIC  
CHINA**

English Bone China comes in  
Canada duty free

### ROYAL CROWN DERBY

"The China to Collect"  
"Like Sterling"

### ROYAL WORCESTER PORCELAIN

Dessert and Service Plates  
Bone China Dinnerware

### COALPORT "KINGSWARE"

Bone China  
Ivory Body Dinnerware

### ROYAL CAULDON

China and Ivory Body Dinnerware

### AYNSLEY FINE CHINA

Service Plates and Dinnerware  
Sevres Blue and Gold, Maroon

### ELKINGTON PLATE

Reproduction of Old Sheffield Plate

A cordial invitation is extended to visit our showroom, to inspect the oldest China House in America and one of the largest displays in the world.

Canada's largest suppliers of China, Silverware, Crockery, Glassware, Lamps and Kitchenware

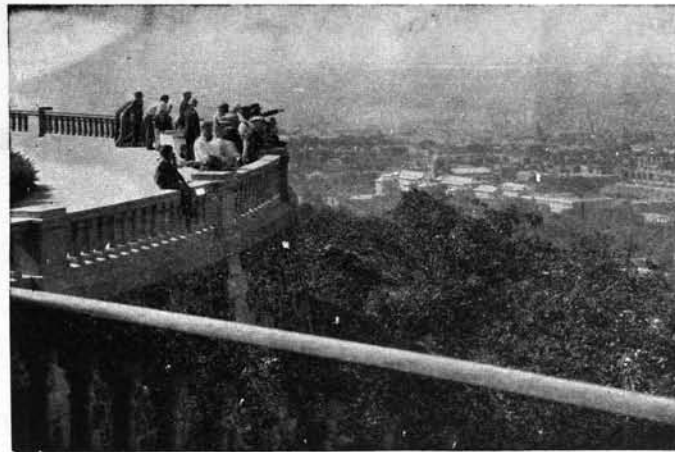
## Cassidy's Limited

Established 1801

51 St. Paul St. West - MONTREAL  
(Two minutes' walk from the Church of Notre Dame)

22 Front St. W. - TORONTO, Ont.  
(near Union Station)

251 St. Joseph St. - QUEBEC, Que.  
WINNPEG and VANCOUVER



**A** THRONGING harbor front, a serrated skyline, towering warehouses, giant industries, beautiful residential districts and public parks—Montreal, and yet not Montreal, for no such merely physical description can capture that individuality which makes the city one apart.

To see this city one climbs the mountain from which it derives its name—Mount Royal. Below is a multitudinous array of roofs which shelter the million inhabitants of the city. Beyond the roofs is the gleaming ribbon of the St. Lawrence with towering grain elevators on its edge, warehouses, piers. Duchesses of the Atlantic dock here one thousand miles from the sea. Brimming grain boats from the Great Lakes disgorge their cargoes. The second port of the North American continent!

In addition to being the country's biggest city, and the only one with a million population, Montréal is also the summer and winter sports centre of the country, and the starting point for many gay expeditions into the Laurentians.

Picturesque Mount Royal, overlooking the city, and from whose 'Lookout' a magnificent panorama of Canada's Metropolis may be obtained, with its illuminated cross, visible for many miles at night, is one of Montréal's outstanding features, and is a most popular spot, both summer and winter, with eager riders using the bridle-paths in summer, and thousands of skiers and sliding enthusiasts taking the fullest possible advantage of the opportunities the Mountain offers in winter.

Montréal possesses attractions other than scenic beauties, however, for there are a number of championship golf courses but a few minutes from the heart of the city, there are two big amusement parks, there are baseball in summer and the finest ice hockey in the world in winter (Montréal is one of the two cities with two big-league ice teams), there is racing, as keen as at Ascot. There are a larger number of hotels, gay clubs and cabarets.

## STOP!

When you see one of these famous Orange Signs. They 'hall-mark' Quality in Service.



Almost anywhere in the Laurentian Mountain Resorts you will be served delicious Tea and you will find on inspection that it is the celebrated "SALADA" brand that Canadians have enjoyed for nearly fifty years.

When in Canada  
**Drink Tea**



MR. T. POTT SAYS:—

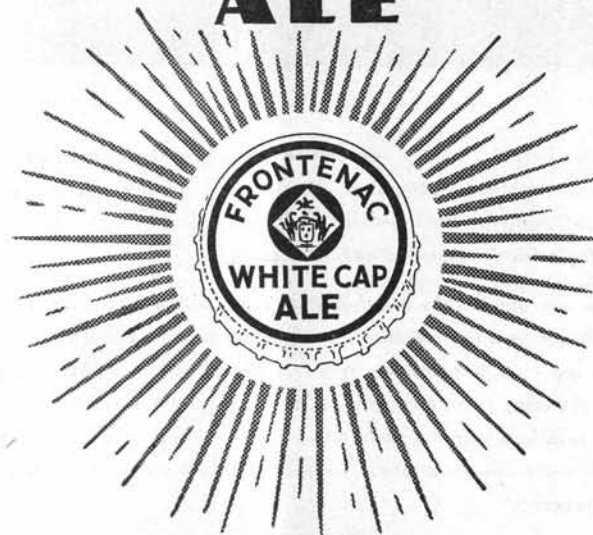
"Tea will refresh you better than anything else."



*Laurentians*  
**INVITE YOU**



**Frontenac**  
*White Cap*  
**ALE**



**A RIGHT ROYAL ALE**





Half-tone Illustrations Courtesy Canadian National Railways.

Top Left: Winter Sports near Morin Heights—Top Right: Fishing in Lost River near Weir—Center Left: Darwin River, Rawdon—Center Right: Typical Winter Sports Scene—Bottom Left: Famous "Hill 70", St. Sauveur—Center Oval: Golfing at Shawbridge—Bottom Right: River of 1000 Islands, St. Eustache.



# Lachute INVITES YOU



Tel. 93

190 MAIN ST.

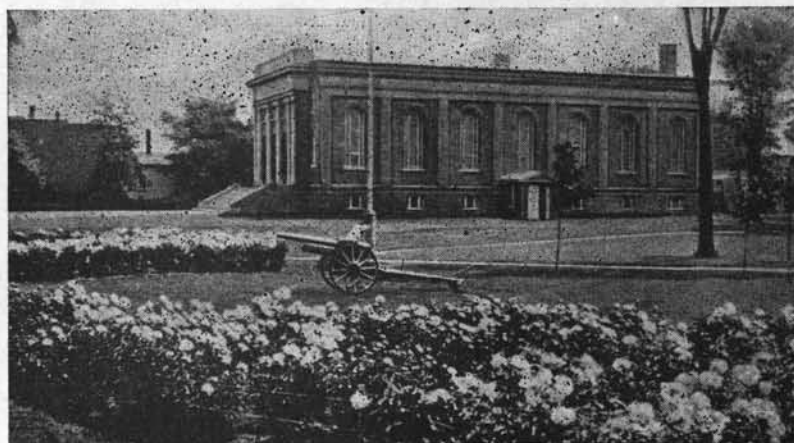
## J. Albin Lamarche

Agent for

THE L'ISLET FOUNDRY LTD.  
STOVES AND FURNACES

Large Assortment of Furniture,  
Radios, Lamps, Chesterfields, etc.  
and Second-hand Furniture.

LACHUTE - - - QUE.



THE picturesque town of Lachute is situated at the juncture of two rivers, the largest of which, navigable for launches and row boats, flows in graceful curves around the foot of a thickly precipitous woodland.

Within the confines of this natural park has been erected a rustic bower, christened "Cape Bellevue." Facing South, as it does, the view from it on a clear day is a magnificent one, embracing a wide stretch of the fertile Ottawa Valley, and being limited only by the far distant Rigaud Mountains.

Between Montreal and Ottawa no other town can compete with Lachute from either a scenic or industrial point of view. Factories are numerous and running at full speed, thus giving a healthy and vigorous life to the town, which is the centre of one of the richest farming communities in Canada.

The present population of Lachute is over 4,000, with largely settled communities in close proximity, Brownsburg and St. Andrews being the largest.

The town is served by the Canadian Pacific Railway and the Provincial Transport Company, which runs buses to Lachute and to Brownsburg.

There are many bright and large retail stores in Lachute, where every need of the residents and tourists may be satisfied. The stores are among the best stocked of any town in the Province of Quebec.

IT was in 1796 that Hezekiah Clark emigrated from Jericho, a settlement in the State of Vermont and settled in the parish of Lachute with a family of three sons and two daughters.

Telephone 237

## Muir Bros. SERVICE STATION

High Grade Gas,  
Oil and Tires

Service is Our Motto.

LACHUTE - - - QUE.

DRUGS and SUNDRIES

## BEATONS PHARMACY THE REXALL STORE

Headquarters for

KODAKS and FILMS  
HUNT'S CHOCOLATES

Main Street - LACHUTE, Que.

Chevrolet — Oldsmobile — With Fisher  
Bodies — With Hydraulic Brakes —  
With Turret Top

## JOHN MASON

Representing  
MASON MOTOR SALES  
Phone 297—Res.: 906-3

Lachute, Que.

Fishing in the Laurentians  
is a real delight.

## R. McArthur & Son

PLUMBING and  
HEATING

"Where Quality Counts"

LACHUTE, P.Q.

The World's Most Popular Beverage

# Coca-Cola

Bottled under approval of the Company's inspectors  
by

## J. P. MacKIMMIE & SONS LACHUTE, QUE.

Manufacturers of the famous

## JAMAICA DRY GINGER ALE

The drink with the local reputation



*Lachute*

**INVITES YOU**



## Paquin Garage

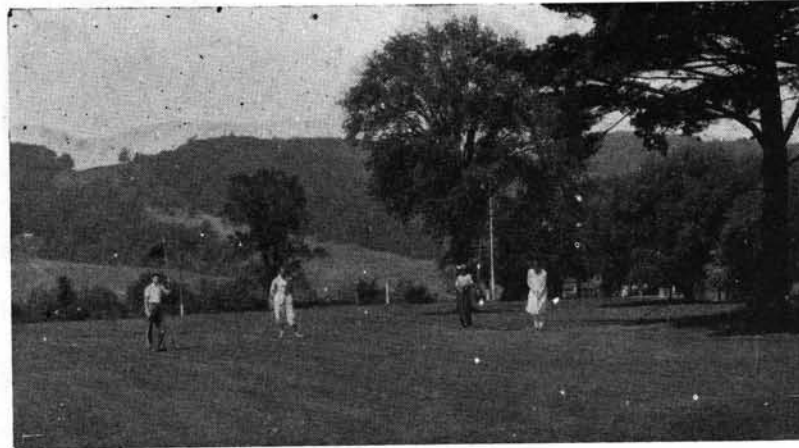
MOST COMPLETE  
GARAGE EQUIPMENT

Auto Repair and Tire Service.  
Accessories, Goodyear Tires.

*Best Equipment and Workmanship.*

LACHUTE, P.Q.

**Good Roads abound  
in the Laurentians.**



At this time Lachute was an entire wilderness and it was not till after two years he was joined by six families from the same place.

In two years after this the settle-

ment was able to provide for itself.

In the year 1800 the first day school was commenced with from 20 to 35 scholars, the school-house being built near the Falls.

WATCHMAKER, JEWELLER *and*  
OPTICAL REPAIRS

HORLOGER, BIJOUTIER *et*  
LUNETTES

*Be Sure To Stop And See*

MDE

**M. A. BELANGER**

10 BETHANY STREET

LACHUTE - - QUE.

P.O. Box 21—Boite Postale 21

ALL OUR WORK GUARANTEED DONE  
BY EXPERT WORKMEN

**If you want Hunting,  
the Laurentians has it.**

*Comfortable Rooms    Delicious Meals*

**COSY INN**

MRS. M. L. GIROUX,  
*Proprietor.*

Tel. 328

LACHUTE, QUE.

Telephone 220

## MacRae Motor Sales

CHRYSLER - PLYMOUTH

SALES *and* SERVICE

B.A. GASOLINE FILLING STATION

LACHUTE, QUE.

## Cottingham Supply Co.

*Dealers in*  
**BUILDERS' SUPPLIES**  
*since 1885*

**"Everything to Build Anything"**

BETHANY ROAD

LACHUTE, P.Q.



*Lachute*  
INVITES YOU.



TEL. 189

**MAGASIN HENRI**  
MARCHAND GENERAL

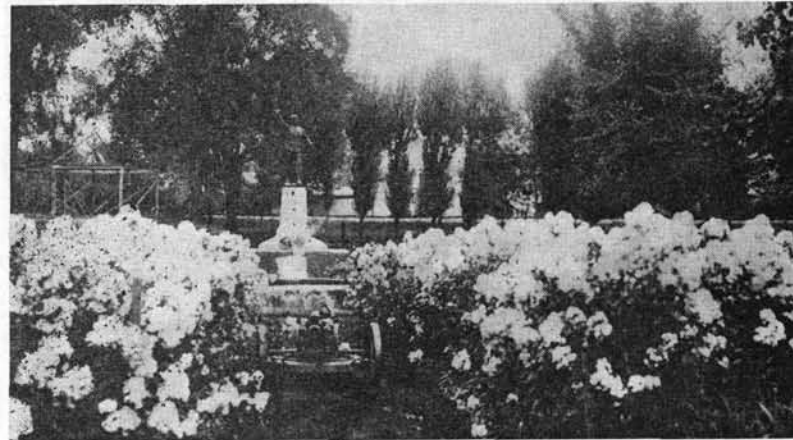
EPICERIES de CHOIX,  
ROBES pour DAMES,  
HABITS, PARDESSUS et  
TISSUS à la verge, Etc.

**HENRY'S STORE**  
GENERAL MERCHANT

CHOICE GROCERIES,  
GENTS' FURNISHINGS  
LADIES' WEAR,  
BOOTS and SHOES, Etc.

H. M. LAVIGNE  
PROP.

Lachute Mills - - Que.



In 1816 a school was established in Lachute under the Royal Institution with a Government grant of £60 a year in support of a teacher. In this and the following year the Rev. Thaddeus Osgoode paid a visit to the Settlement as a missionary and established Sabbath School. Till this time much inconvenience was felt for the want of suitable bridges, and it was not till 1825 that the first pier bridge (White's) was erected. About this time the first magistrate was appointed: Lieut. Col. Thos. Barron.

**REX**  
**THEATRE**

*The Home*

*of*

**GOOD**

**SHOWS**



*Remember* **BLANKETS for CAMP**  
*and* **AYERS for BLANKETS**

Whether it's a "hip hole" under a tree, a hunting lodge or the family bungalow, you're going to need blankets. Ayers make them better . . . Better make them Ayers!

"INDIAN CHIEF":— Heavy. Long staple. Pure Wool. For roughest use. In solid shades of scarlet, green, khaki and pastel shades of camel, rose, green, saxe blue, mauve and old gold.

"PIONEER":—Medium weight. Pure wool. For campers, hunters, etc. In solid shades, scarlet, green, khaki and grey, with broad black border at each end.

"HEATHERTONE":— Warm, hard wearing, napless. Thoroughly clean scoured. All wool. Heather grey. For fishing, lumber and construction camps.

"SILVERTONE":—Superior. Pure Wool. Finished with soft, fleecy nap. Popular for domestic and sports use. Silver grey. Fine quality.

Ask for AYERS blankets  
at any store or write . . .

*Ayers*  
**LIMITED**

Established 1876

LACHUTE MILLS, P.Q.



*Lachute*  
**INVITES YOU**



"Fuelling the Countryside"

**S. S. Campbell**  
LACHUTE

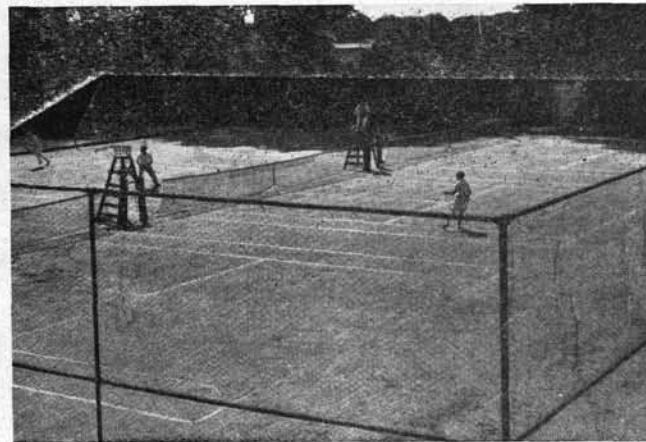
Nev'r-nox British American  
Gasoline

British American Autolene  
Lubrication and Fuels

*Low in Price—High in Quality*

—refined in Quebec, by Canadians  
—for sale at all local Gas Stations

LACHUTE - - - QUE.



**T**HE great manufacturing centre of Lachute really had its being about 1804, when the Lachute mills were started. The mills were operated in a wooden building erected on the North side of the River.

In the year 1807 the censitaire on Lane's purchase were sued for rents by the Seigneur, which action continued for several years and resulted in favor of the Seigneur. The censitaires, nothing daunted, applied to the Upper Court, and after five years litigation it ended in a revision of the former decision. About this time the roads were so far improved that wheel carriages were used for going to the Church, market, etc.

In 1809 the first Scotch settler, Lieut-Col. Thomas Barron, arrived, and the Americans, having exhausted the potash timber and the best of the soil, gradually gave way to another class of settlers from Britain. In this year a new grist and saw mill was built on the other side of the river.

Prominent among the industries today in Lachute is the famous Ayers Limited plant at Lachute Mills, which was established in 1870. This firm is well known as manufacturers of pulp and paper maker's felt, woollen, cotton, asbestos cotton, transmission rope and pure wool blankets.

Among the industries are the Cottingham Supply Company, Wilson Paper Company, T. McOuat and Son's foundry, J. P. MacKimmie and Sons, ginger ale manufacturers and several others.

GAVIN J. WALKER Phones: Office 32  
J. ERNEST WALKER Res.: 273 r 2

∴ INSURE WITH ∴  
**J. E. Walker**

•  
FIRE — AUTOMOBILE  
ACCIDENT

•  
ONLY RELIABLE COMPANIES  
REPRESENTED

LACHUTE - - - QUE.

A district free from  
**Hay Fever**  
—The Laurentians.

**Fournier  
Service  
Station**

Telephone 259  
Lachute, P.Q.

**LACHUTE  
LUNCH CAR**

FIRST CLASS MEALS

•  
At All Hours  
At Reasonable Prices

J. O. TOUCHELLE, Prop.

**E. LAURIN & FILS**

*Wholesale Fruits and Vegetables*

*Fruits et Légumes En Gros*

LACHUTE, QUE.



*Lachute*  
INVITES YOU



In 1834 the first Church was built, the Stone Church, a short distance east of this on the south side of the road. It was built by the Body of the Associate Synod Congregation, and under the pastoral care of the Rev. Mr. Brunton.

In 1835, the Government gave the Settlement a Post-office.

In 1836 another bridge was built over the North River at Col. Barron's own expense, and in 1837 another bridge was built over the North River opposite the proces verbal road.



## See the Laurentians by MOTOR COACH

When you travel by motorcoach you seem to be in more intimate touch with the country-side — you get a close-up rather than a fleeting long distance glimpse of Quebec's wonders. Frequent schedules are offered to practically all the principal beauty spots in the mountains — and at costs less than any other means of travel.

For full information, see your local agent or

1227 PHILLIPS SQUARE  
MONTREAL

TELEPHONE  
PLATEAU 7141

**PROVINCIAL  
TRANSPORT**  
*Company*

RENDEZ-VOUS DE VOYAGEURS  
ET TOURISTES

ACCOMMODATION FOR TRAVELLERS  
AND TOURISTS

# HOTEL DESJARDINS

H. E. DESJARDINS, Prop.

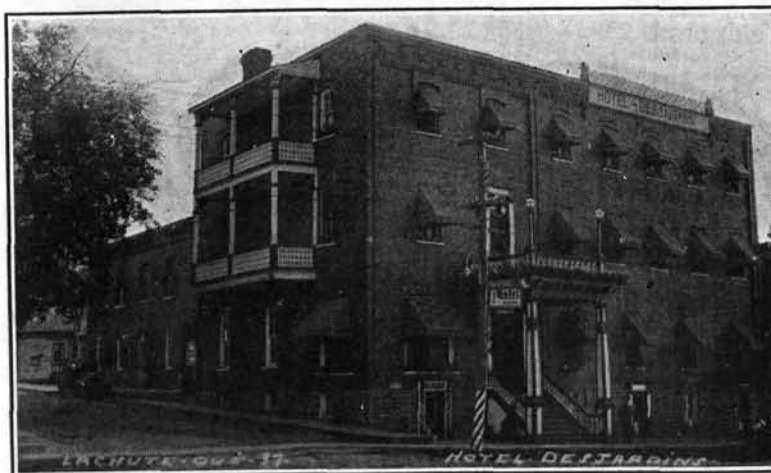
Ideal accommodation, and the most modern  
cuisine in the Laurentians

Telephone 812

Mi-chemin de Montreal  
et Ottawa

Midway between Montreal  
and Ottawa

LACHUTE, QUE.



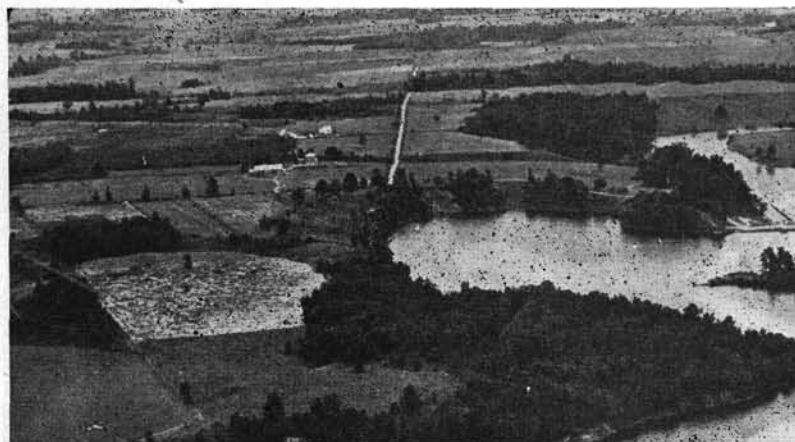
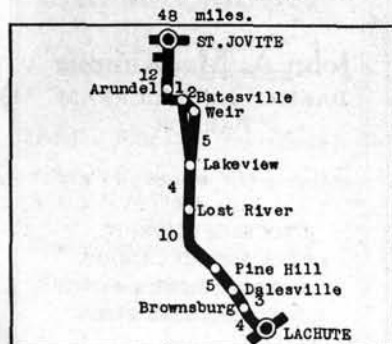


*Lachute*  
**INVITES YOU**



## ROUTE No. 31

ST. JOVITE—LACHUTE



Stop at the  
**LACHUTE HOTEL**  
on the way to  
your Laurentian holiday

Excellent Food, Reasonable  
Rates, Modern Accommodation

**LACHUTE, QUE.**

A district free from  
**Hay Fever**  
—The Laurentians.

The Latest Travel Vogue  
Vacation in the  
Laurentians.

## ARGENTEUIL COUNTY MUSEUM AT LACHUTE

Argenteuil County is to have a historical museum on a 700-acre estate, the gift of Mr. Felix Hangerford of Montreal.

The Historical ociety of the county has accepted the responsibility of keeping the estate in proper repair and stocking the museum with noteworthy Canadiana.

It is no light task to stock a museum or to keep a museum going. Yet it is a task which is its own reward and enriches the lives of those who pursue it.

Dr. W. P. Percival, who addressed the association recently, pointed out that we have not enough historical museums in the province which is so rich in its historical association.

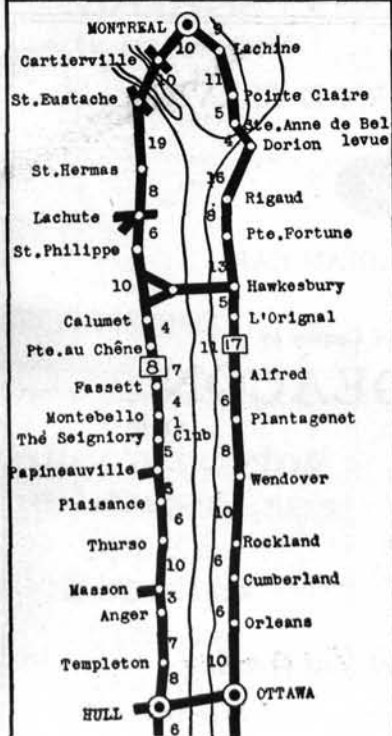
## *Tobin's Travel Bureau*

STEAMSHIP TICKETS - AIRWAYS - MOTOR COACHES  
CRUISES - TOURS - PRIVATE CARS - HOTELS  
Experienced unbiased advice given without charge  
Let us handle your next trip

LEO S. TOBIN, President  
1409 PEEL ST. TEL. PL. 9613 MONTREAL

## ROUTES Nos. 8 and 17

MONTREAL—OTTAWA—  
233 miles.



After enjoying  
the Laurentians  
See the  
Beautiful  
Gaspé  
Peninsula  
by Motor

## T. McOUAT and SON

LACHUTE MILLS

*The Up-to-date Hardware Store*

- Cooking Utensils and Kitchenware.
- Tools for Householder and Handyman.
- Household Heating Requirements and Equipment.
- Machine Shop and Foundry—

ALTOGETHER, A MOST COMPLETE SERVICE AND  
SUPPLY-HOUSE FOR THE HOME-OWNER'S NEEDS

Phone (Foundry) 12-W (Store) 12-J



# Lachute INVITES YOU



Telephone 339

**Dr. ROGER DUMAIS**  
L.D.S.  
SURGEON DENTIST

240 Main Street  
LACHUTE - - QUE.



**I**N 1812, the year of the American War, Lachute had a militia roll numbering about 150 men, these forming three companies, two of which were regular militia, commanded by Captains Bixby and McNall. The 3rd company was a volunteer company of rifles commanded by Captains P. Hutchins and W. Chapman.

These turned out to defend the Province and were escorted to Pt. St. Claire by the Adjutant, Thomas Barron, to put themselves under the command of Lieut. Col. Kell, who commanded the divisions of this place, Chatham, Grenville and Petite Nation.

**Clear, cool, mountain air.**

**Go to the Laurentians  
for a breather.**

Phone 80W

Residence 80J

**John A. MacKimmie**  
BAKERY and ICE CREAM  
PARLOR

GROCERIES and FRUIT,  
LAURA SECOND CANDIES,  
PURITY FLOUR and  
PIONEER POULTRY FEEDS

LACHUTE MILLS - QUE.

**FRANK E. EARLE**  
JEWELLER  
SOUVENIRS—GIFTS  
LACHUTE - - QUE.

## Boyd's Lachute Express Ltd.

N. W. BOYD, President



**Daily Service between LACHUTE & MONTREAL**

All Loads fully covered by Insurance

Special attention given to Furniture going to Summer Camps  
within a radius of 25 miles from Lachute, Que.

Montreal Warehouse:—Transport Terminals Ltd.  
229-235 Young Street, Phone Willbank 2192-93-94

Lachute:—68 Robert Street  
Phone 348-J

Residence:—114 Bedard Blvd.  
Phone 348-W

**FORD SALES . . . FORD SERVICE**



THE ALL-CANADIAN CAR

Sold in Argenteuil County by

**GEO. Y. DEACON**  
LACHUTE MILLS - - - QUE.

*Sheet Metal Work and Roofing*  
*Everything in Hardware and Utensils*



# Brownsburg INVITES YOU



Telephone 911 r 4

## BROWNSBURG HOTEL

ALDEGE CARRIERE, Prop.

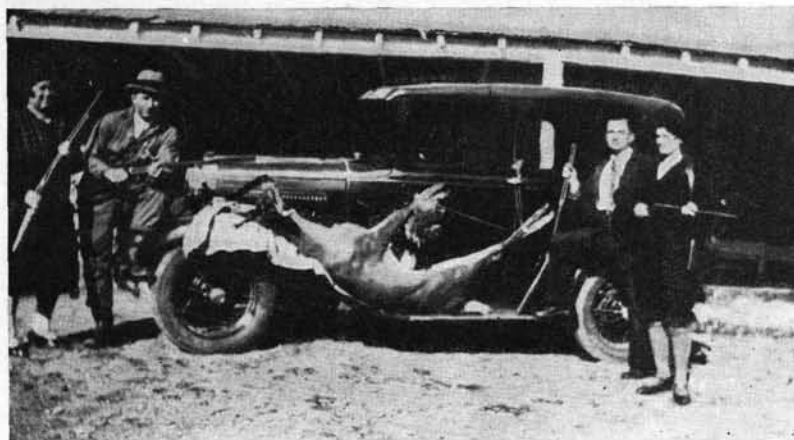
Repos du Voyageur  
Restful Place for Travelers

Chambre et pension de première  
classe.

First class room and board.

Summer cottages for rent  
on private lake.

BROWNSBURG, P.Q.



Phone 907 r 6

## St. Onge Hotel

300 feet from St. Jovite Highway

Accommodations for Tourists

Beer and Wine

BROWNSBURG, QUE.

Telephone 906-R-14

## BROWNSBURG GARAGE

ALEX. GORDON, Prop.

Towing Service

BROWNSBURG, P. Q.

After enjoying  
the Laurentians  
See the  
Beautiful  
Gaspé  
Peninsula  
by Motor

**B**ROWNSBURG is a charming and picturesque little town five miles above Lachute on Highway No. 31. It is situated on the hillside of The Laurentians and is 465 feet above sea level.

Tourists who pass through Brownsburg will enjoy it as there are remarkable beauty spots in the town itself and in the surrounding districts. There is an active Town Council, the members of which are glad to give out information about this side of the mountains, of which the residents are very proud.

There are three hotels in the town, two of which are the Carrier Hotel and St. Onge Hotel, where tourists will be given a warm welcome and receive every attention with true French hospitality.

Several large stores are well stocked with goods at low prices. There are also ice cream parlors and shops where the latest magazines and books may be obtained.

The town is only 54 miles from Montreal, where the good roads will take you to rivers and lakes and where trout are plentiful. In addition to lake and river trout there is good salmon and bass fishing in the surrounding districts.

The altitude and surroundings in Brownsburg will make your visit there restful and healthful.

If you want Hunting,  
the Laurentians has it.

PHONE 907-R-5

## H. PARISEAU

Marchand General Merchant

BOUCHER — BUTCHER

Marchand de Nouveautés, Marchandises  
Sèches, Ferronneries et Epiceries  
Assortiment Complet

Complete Assortment of Staple and  
Fancy Dry Goods  
Hardware and Groceries

BROWNSBURG, P.Q.



## Brownsburg INVITES YOU

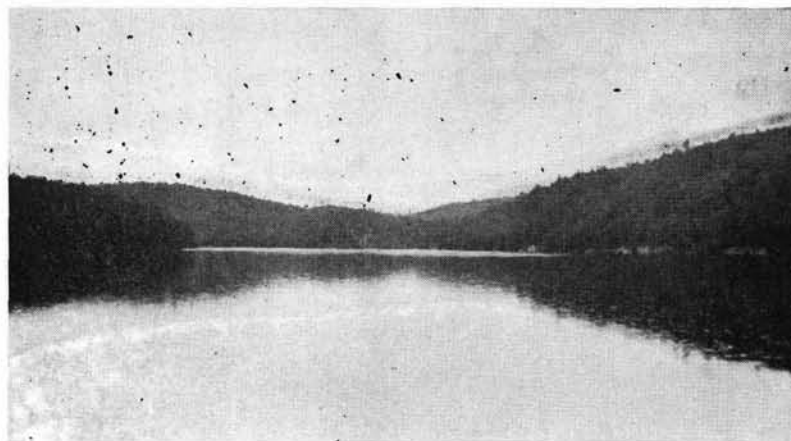


### J. MAITLAND

Ice Cream Parlor and  
High Class Confectionery

Salon de Crème à la Glace  
et Bonbons de toutes  
sortes

BROWNSBURG, P. Q.



**B**ROWNSBURG is noted throughout Quebec for its various industries, which give employment to more than 3,000 persons. Ammunition of all kinds, with the famous trade mark D.C. Co., are manufactured in this enterprising town.

Among other manufacturers are safety fuses for railroading purposes. There is also a large plant where toothbrushes, combs and many articles in pyralin are made.

These factories are owned by Canadian Industries Limited, and the articles manufactured enjoy a large sale throughout the markets of the world.

The Town Council urges those looking for excellent manufacturing sites to visit Brownsburg this Summer and discuss the attractive terms the town has to offer manufacturers.

The municipal rate of taxation is only 5 mills on the dollar. The good roads and railway facilities are added attractions.

There are also many attractive sites for Summer cottages along rivers and lakes in the vicinity of the town.

There is a splendid bus service maintained by the Provincial Transport Service to and from Montreal. Taxis meet all trains at Lachute, only five miles away.

### J. E. MacGIBBON

PATENT MEDICINES

Magazines, Greeting Cards  
and Confectionery

SMOKERS' SUPPLIES

ICE CREAM PARLOR

BROWNSBURG, Que.

A district free from  
Hay Fever  
—The Laurentians.

### J. R. Desjardins

FRUITS AND VEGETABLES  
Wholesale and Retail

FRUITS ET LEGUMES  
En Gros et Détail

BROWNSBURG, QUE.

Consider the  
beautiful trip  
to the  
SAGUENAY

by

Canada Steamship  
Lines

Telephone 906-4

## G. I. McFAUL

General Merchant



BROWNSBURG, P.Q.



*Dalesville*  
**INVITES YOU**



*Only Garage and Service  
Station in Dalesville*

**R. S. STEPHENSON**

Well Equipped Garage

Imperial Oil and Gas

DALESVILLE, QUE.



**Laporte-Hudon  
Hebert-Limited**

*Distributors of the Reliable Brands*

"GAZELLE",

"VICTORIA"

and "LAVAL"

Canned Fruits, Vegetables,  
Salmon, Jams, Pickles



MONTREAL, P.Q.

**JOS. HAMILTON**

Groceries, Flour, Feed

BLUE SUNOCO  
GAS and OIL

Ice Cream Parlor  
Soft Drinks

DALESVILLE, QUE.

**T**HE beautiful little village of Dalesville is situated on the main Lachute-St. Jovite highway, a short distance above Brownsburg. This village is noted for its wonderful scenery at the foothills of the Laurentians with every attraction that Nature has to offer tourists.

There is splendid fishing in the many lakes in the vicinity during the Summer months, as well as splendid hunting during the Fall and Winter seasons.

Its close proximity to Lachute makes it an ideal Summer resort where residents are only a few minutes from the Lachute shopping centre.

Excellent hotel accommodations may be obtained at Pine Hill, a short distance away.

Brilliant Sunshine,  
Let's go—Laurentians.

**W. J. Tomalty & Son**  
GENERAL STORE

POST OFFICE  
BRITISH AMERICAN  
FILLING STATION

Dalesville - - Que.

After enjoying  
the Laurentians  
See the  
Beautiful  
Gaspé  
Peninsula  
by Motor

**TAXIDERM Y**



*Mounted by*  
**THE HOUSE  
OF LEARO**  
SCULPTOR-TAXIDERMISTS

1102 Bleury (2nd Floor upstairs) - LANCaster 1568  
MONTREAL, CANADA

80 Page Illustrated Catalogue with Standard prices and useful information for all sportsmen on request, without charge. Apply Dep't H.  
Trophies of every description for sale.  
The Largest, Oldest and Most Scientific Taxidermist Establishment and Supply House in the British Empire and the only Firm in Canada Employing Museum Methods. Established Over 80 Years.



# Pinehill INVITES YOU



## Welcome To CANADA



We hope you will enjoy every minute of your stay in the Laurentians, and are anxious for you to try cigars manufactured in Canada, as we feel that you will find the real enjoyment of "Smoke Satisfaction" in so doing.

We wish to bring to your attention that all cigars from 10c up are hand-made and from the finest imported tobacco.

If you are desirous of trying something unique and different, then smoke

### SIMON'S CIGARS

in all sizes, or

### PANDORA CIGARS

they are improved in flavour by being individually Cedarap (Aged in Cedar) and then wrapped in Cellophane.



**A**FTER leaving Dalesville on the Lachute-St. Jovite highway the motorist comes to the picturesque village of Pine Hill and the Pine Hill hotel, one of the most popular hotels on this highway.

Pine Hill is particularly noted for its fishing during the Summer and hunting in the Fall and Winter seasons. Situated as it is in a river and lake district it affords every opportunity, Summer and Winter, to sportsmen.

Some of the best catches of fish have been taken in this district, while deer, moose and other game are plentiful in this thickly wooded section of the Laurentians.

Several Montrealers have built log cabins at Pine Hill. The cabins are among the most unique in the mountains. Several new ones are being erected in the district this Summer.

#### OPEN ROADS DURING THE WINTER SEASON

**T**HE even-tempered weather last Winter did great things for the Laurentians. It demonstrated the benefits to business of the open road.

Route No. 31, Lachute to Arundel, was kept open until the 15th of March, when the Winter's worst snowstorm closed the road for a few days.

The progressive spirit of the present Government can be depended on to see that Route No. II, at least from Brownsburg to Pinehill, is widened and improved.

## PINE HILL HOTEL

POLYDOR GAGNE, Prop.

Accommodation for Tourists  
Excellent Meals at  
Moderate Prices  
Splendid Bathing

WELL FURNISHED LOG CABINS  
FOR SALE AND TO RENT

PINEHILL, QUE.

**Good Roads abound  
in the Laurentians.**

## LEO CARRIERE

*Marchand de Bois — Lumber Dealer*

Slabs de Bois Mou et de Bois Franc  
Hard and Soft Wood Slabs

Bois non préparé de toutes sortes  
Rough Lumber of all kinds

PINE HILL, P.Q.



## 16 Islands

INVITE YOU



### SIXTEEN ISLAND LAKE

**S**XTEEN Island Lake, between Morin Heights and Weir, is nestled in a mountain cradle, surrounded by 25 peaks. At the head of the lake is the Canadian National Railways station, and a picturesque

village of all-year-round residents, a Catholic church and four stores.

About a mile down the lake there is an open-air summer church on Ludington's Point. This church is largely attended by lake residents. The lake is five miles long and a mile broad at some parts.

There is ample opportunity for the most ambitious mountain climbers and hikers, as well as for motor boat enthusiasts, canoeists and tennis players.

Due to the fact that Sixteen Island Lake is leased to the fishing club, only members of the club and all-year-round residents are permitted to fish in the lake, although there are many other fishing places in the nearby lakes and streams.

With the opening of the new highway between Morin Heights and the lake there will be much traffic through this picturesque village. The distance to Montreal will be shortened by 20 miles, making the lake only 70 miles from the city.

Plans are now underway to promote skiing at Sixteen Island Lake this coming Winter, where, with the splendid sites for ski runs, there should be an active Winter season at the Lake.

### LAURENTIANS ON PARADE

W. G. REES, *Director*

*Published by*

TOBIN'S TRAVEL BUREAU

MONTREAL

### AN EXPRESSION OF THANKS

The Publishers of LAURENTIANS ON PARADE are exceedingly grateful for the general co-operation extended which has made this publication possible, and wish to express their appreciation.

In this connection particular mention is made of Mr. E. M. Shippel, of Round Lake Inn, Weir, and Mr. J. S. Giles, publisher of The Watchman, Lachute, who have been most active in their co-operation.



### Typical Scenes in 16-Island Lake





# MacDonald Lake INVITE YOU



Running Water in All Bedrooms

## DEER'S HEAD INN LAKE MacDONALD

*Simplicity Our Charm  
Cuisine Our Pride*

P.O. Address, LAKEVIEW, Que.  
Via Arundel RR. 2.  
Write or Telephone Arundel Exchange.

## CLIFFSIDE HOUSE

MacDONALD LAKE  
J. JOHNSON, Prop.

ARUNDEL - - - QUE.  
P.O. Rural Route No. 2.

British American and Imperial Oil Gas.

## LAKEVIEW GROCERY and GASOLINE

LAKEVIEW, P. O. - - - QUE.

## LOST RIVER HOTEL

E. BRUNELLE, Prop.

LOST RIVER - - - QUE.

### "ANY TIME IS TEA TIME" ON THE LAURENTIAN TRAIL

There is one delightful custom that you will thoroughly enjoy anywhere in the famous Laurentians.

"Canadians" and "Canadiens" make the most delicious Tea and serve it at any time of the day in perfect style.

When you drink the kind of tea they serve in the Laurentian Inns and wayside Restaurants you at once realize why this beverage has been so



**M**ACDONALD LAKE, on the Lachute highway between Lost River and Weir, is one of the largest lakes in this attractive district of the Laurentians. The lake is noted for its many fine beaches. Splendid fishing, boating, tennis and other Summer pastimes are features. The Arundel golf course is only a few miles from Macdonald Lake.

There is no lake in the Laurentians which offers better accommodation to tourists. The lake in addition to being on the main St. Jovite highway, is within a short distance of the Canadian National Railway, at Weir.

The three most popular hotels are Macdonald Lake House, with 40 rooms on the Lake, Deer's Head Inn, and Cliffside House, ideally situated hotels across the lake.

The Lost River Hotel, just before Macdonald Lake, is one of the popular hotels and stopping places on the Lachute side of the mountains.

universally praised since generations B.C.

The ancient Chinese wrote that "Tea tempers the Spirit and relieves fatigue." Why, only the other day a broadcaster from the Coronation Ceremonies in London explained that Their Majesties were "Taking Tea" immediately after the great ordeal of the procession and before appearing before the populace on the balcony of Buckingham Palace.

Wherever you go in the Laurentians you are assured of delicious Tea. Order it as "Afternoon Tea" or with your Meals and you will find more enjoyment in this pure natural beverage than you ever imagined.

A REAL HOME



## MacDONALD LAKE HOUSE

ARUNDEL, QUE.

One of the Finest Locations on  
Beautiful Lake Macdonald

LARGE SANDY BEACH, TENNIS,  
BOATING, BASS AND TROUT,  
FISHING, DIVING TOWER

"The guest desiring a quiet place with  
beautiful scenery, will find this an  
ideal spot."

**MOTORISTS:—USE ROUTE 8 TO  
LACHUTE AND 31 FROM LACHUTE  
HERE.**

Winter Sports in the Laurentians runs the entire gamut of real enjoyment—well marked Ski Trails. Snowshoeing, sliding and all with comfortable Hotel accommodation to provide a background that makes a Holiday in this district entirely satisfactory.

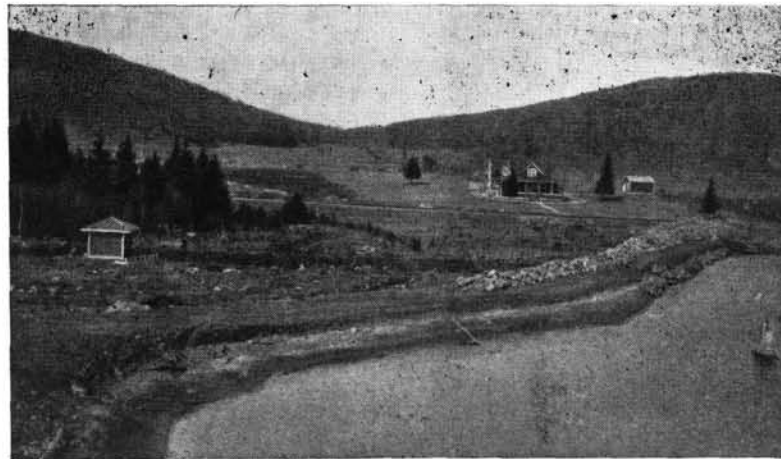


*La Rose*  
**INVITES YOU**



Benson & Hedges *presents the*  
**BELMONT**  
CIGAR  
*"It's the top"* **10¢**

## "LA ROSE STATION" CALLING YOU



Glorious country - 70 miles from Montreal on C.N.R. line. Good trout fishing, boating, hunting, etc. Come! Bring your family and friends. You will all enjoy it!

**ADMIRATION**  
*Canada's Finest* **5¢ CIGAR**



*Weir*  
**INVITES YOU**



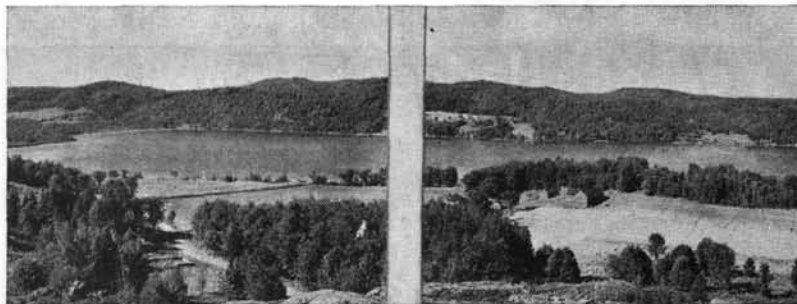
**THE  
MIDGET THEATRE**  
WEIR, P.Q.

*Latest Talkies*

•  
News Reel — Short and  
Big Feature Film

•  
Sunday and Monday Evenings  
8.30 P.M.

**POPULAR PRICES**



**W**EIR promises to be one of the busiest centres in The Laurentians following the opening of the new highway from Morin Heights to Sixteen Island Lake. This highway will connect the Ste. Agathe and Lachute highways, bringing to an end the efforts of the Weir and Morin Heights town councils over a period of 20 years.

The new highway, which will be completed this Summer, opens up a large territory which in the past has been inaccessible to automobile traffic. It will shorten the distance from Weir to Montreal by 12 miles, and should increase the traffic through Weir which previously went by other routes to Montreal and return.

The highway will prove a popular short round-trip from Montreal, via Batesville, Beavan's Lake, Weir and Sixteen Island Lake.

Round Lake Inn, a 50-room hotel, is situated on the bluff above Round Lake, a half mile from the C.N.R. station, and about 200 yards off the Lachute-St. Jovite highway.

A short distance away toward Lachute, is the Mountain View Farm, an exceptionally well located boarding house on Bevan's Lake.

The Batesville House, situated on Round Lake, is a popular summer hotel.

When in Weir  
Visit Our  
Restaurant and  
Ice Cream Parlor

Soft Drinks - Tobaccos

•  
**A. J. KERR**  
Proprietor

**MOUNTAIN VIEW**

DAIRY FARM R. OWEN, Prop.

**WEIR, QUE.**

Summer Board with the best accommodation. Situated on Beavans Lake. Excellent Board. Comfortable Rooms. Bathroom. Hot and Cold Water. Private Sandy Beach. Boats, Fishing, Tennis. convenient to Golf Course.

Free Transfer to and from Station.

•  
Write or Phone — R. OWEN

**FULL STOP AT  
LEVEL CROSSINGS**

**B**EFORE driving a motor vehicle over a level crossing the person who is driving such vehicle must bring it to a stop for a moment near such crossing, and then start it in low gear. This provision does not apply, however, in the case of tramway tracks, nor in the case of a level crossing while in charge of a signalman, or when equipped with gates, or signals automatically indicating the approach of a train.

**BATTERY SERVICE**

**GASOLENE AND OIL**

**GEORGE MORGAN**

*Garage*

**WEIR, QUE.**

The Laurentians offer a varied programme of Vacation opportunities for all Seasons—no matter when you want a Holiday—the Laurentians can supply it to suit any Purse.

INFORM



*Weir*  
INVITES YOU



**W**EIR is one of the oldest and best known villages on the Lachute-St. Jovite highway. It is approximately 75 miles from Montreal on Routes 8 and 31. It is the same distance by railway over the Canadian National Railways.

It was at one time a great lumber centre, but this industry has been greatly curtailed since the burning of J. and W. Duncan's saw mill a few years ago.

Weir is particularly noted for its small mouth bass fishing which is good in Round Lake and the adjacent beautiful Bevan's Lake, which is a popular

resort for Montreal summer cottagers. There is also good lake and brook trout and pike fishing in the nearby lakes and streams.

During the season there is good sport in hunting deer, partridge and wood woodcock while the odd black bear is shot in the surrounding mountain regions.

There is excellent hotel accommodation in Weir.

## ROUND LAKE INN — WEIR, QUE.

Private sand beach 200 yards from the Hotel.

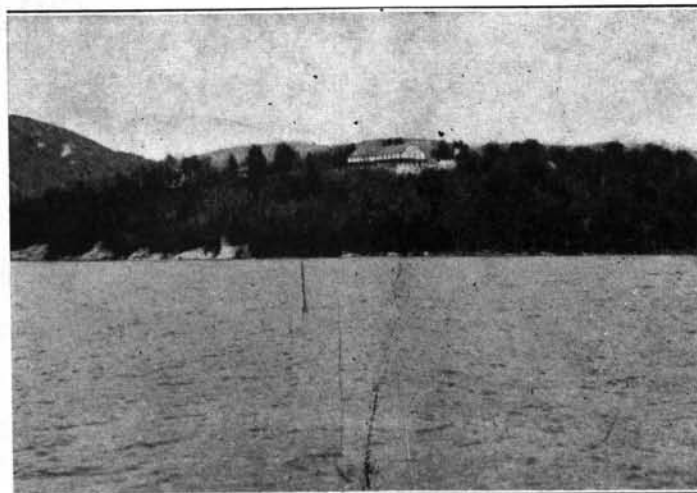
Accommodation for 150 Guests.

Five minutes from Station and Post Office.

Bell Telephone

C. N. R. Telegraph

Open Fireplace in the Lobby



Panoramic view from spacious Hotel verandah overlooking Lake is unsurpassed in the Laurentians.

Excellent Fishing

Rooms and Hallways spacious and bright.

All modern conveniences

EDWARD SHIPPEL  
Managing Director

Located on beautiful Round Lake, 75 Miles from Montreal. 3¼ hours by C.N.R.  
Motorists—Follow Highway No. 8 to Lachute, then Highway No. 31

*Fishing*

*Bathing*

*Canoeing*

*Tennis*

*Dancing*



# Arundel INVITES YOU



**GRANT SIMON**  
GENERAL MERCHANT

ARUNDEL, QUE.

## Boarding House

Near Barkmere Golf Club

ARUNDEL, QUE.

Reasonable Rates  
Excellent Homecooking  
Fresh Eggs - Cream and Milk

Mrs. Herbert Cooke, Prop.

**Sports: Golf Courses**  
abound in the  
Laurentians.

**W. D. GRAHAM**  
General Merchant

Dry Goods, Groceries,  
Boots and Shoes,  
Hardware

ARUNDEL, QUE.



**A** RUNDEL, on the Lachute-St. Jovite highway, Route 31, is 78 miles from Montreal, and the same distance by the Canadian National Railways, where a daily train service is maintained during the Summer months.

The village is situated only a mile from the Rouge River and its sister village, Huberdeau. In addition to the many miles of mountain scenery Arundel is a favorite hunting centre. The native sportsmen make long saunters into the forest miles back of the village, and bring home moose, often weighing 1,400 pounds.

Two years ago a party of Arundel sportsmen brought out three large moose while on one hunting trip. In the vicinity of the village are deer, black bear and partridge.

There is excellent fishing in nearby lakes, where there is a good supply of bass and lake and brook trout. The lakes near Arundel are Round Lake, Bevan's Lake, and Bark Lake.

As the village is on the main highway from Mont-Laurier to Montreal, there is during the Summer a steady stream of cars passing through Arundel, where there are many spots which find favor in the eyes of tourists, who like to stop to rest on warm days, and often take out their picnic baskets and enjoy a quiet repast at some of the most beautiful spots in The Laurentians.

There are two small hotels in Arundel, the Temperance in the village, and Mrs. Herbert Cooke's boarding house near the golf club.

## STANIFORTH'S

FILLING STATION  
and RESTAURANT



Arundel Route 31

SERVICE COMME IL FAUT

Clean Rest Rooms.

Shell Products, Tire Repairs, Greasing  
Lunches, Cold Drinks, Ice Cream,  
Tobaccos

Reliable Information.

**Sandy Beaches**  
—interesting Quebec  
atmosphere  
—The Laurentians.

Phone Central  
Arundel

P.O. Box 13

## GORDON'S GARAGE

J. P. GORDON, Prop.



General Overhauling and  
Repairs of all kinds. Gasoline,  
Grease and Oil, Tires,  
Tubes and Accessories,  
Batteries Charged and  
Repaired, Oxy-Acetylene  
Welding.

ARUNDEL

QUE.



*Arundel*  
**INVITES YOU**



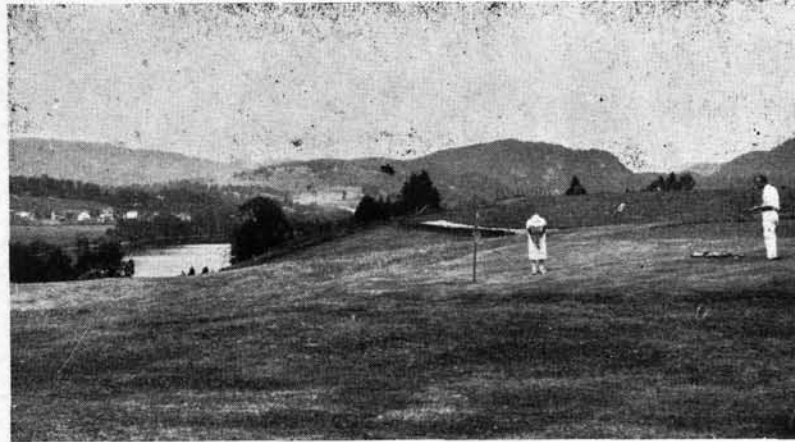
AGENT FOR BLATCHFORD FEEDS  
and JAS. SWAY POULTRY  
EQUIPMENT

*The* LAURENTIAN  
POULTRY FARM

LESLIE J. COOKE

HATCHING EGGS  
BABY CHICKS  
PULLETS  
COMMERCIAL and  
MILL FEEDS

ARUNDEL - - - QUE.



**O**NE of the chief attraction in Arundel for tourists is the Barkmere Golf Club. A splendid nine-hole course, which is situated on high ground overlooking the winding Rouge River. It is a halfmile above the village of Arundel, on the main highway to St. Jovite.

The course was constructed in 1928 and improvements have been made from year to year which have enhanced the natural attractiveness of the site.

**A district free from  
Hay Fever  
—The Laurentians.**

ONE BREED ONLY—BARRED ROCKS

ARUNDEL POULTRY  
FARM

DR. W. L. MORRISON, V.S., Prop.

STRICTLY FRESH EGGS  
*a Specialty.*

ROASTING CHICKENS

ARUNDEL - - - QUE.

**The Latest Travel Vogue  
Vacation in the  
Laurentians.**

Visitors Welcome At

**BARKMERE GOLF CLUB**

ARUNDEL, QUE.

GREEN FEES: One dollar per day.

\$3.50 for book of five tickets.

Transferable—good all days.

Board and lodging at the course at reasonable rates.

**BENNETT'S EXPRESS**

General Transport Service  
To and From Montreal Daily

WAREHOUSE MONTREAL, 1094 NOTRE-DAME WEST  
ENTREPOT OUEST

Tel. Fitzroy 4686

ARUNDEL, QUE.



# Huberdeau

## INVITES YOU



### J. P. St. Georges

Marchand de Tabac  
Bonbons en Gros

HUBERDEAU, QUE.

### HUBERDEAU EXPRESS

H. FORTIER, Prop.

DAILY SERVICE QUOTIDIEN

GENERAL TRANSPORT

To and From Montreal—De et à Montréal  
All Goods Insured—Toutes  
Marchandises Assurées

Warehouse:

MONTREAL CENTRAL AUTO  
FREIGHT DEPOT REG'D.  
Telephone PLateau 5071

### GERARD McLAUGHLIN

Tobacco and Candy  
Merchant

HUBERDEAU, QUE.

### E. F. BROSSEAU

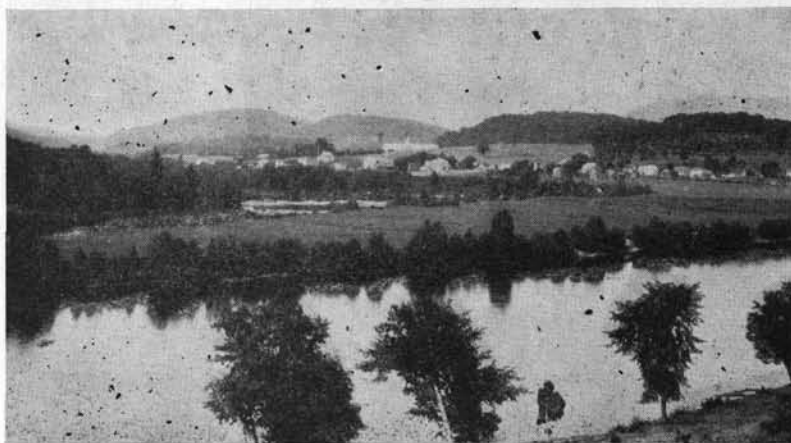
General Store

HUBERDEAU, QUE.

### J. PICHE

Butcher - Boucher

HUBERDEAU, QUE.



HUBERDEAU is about 80 miles from Montreal, on the Lachute-St. Jovite highway, route 31. Nestled along the Rouge River, it is one of the most picturesque villages in The Laurentians. The magnificent Calvary and Grotto are located in Huberdeau, high above the river. Calvary was originated by the Fathers of Mary, a French order, in 1895. It was inspired by the Brittany's Calvary in Brittany, and it is a replica of the famous Pont Chateau's Calvary in Brittany, situated near St. Nazaire

Thousands of tourists from all parts of Canada and the United States visit this shrine every Summer.

There are miles of scenic grandeur around Huberdeau and along the Rouge River where sportsmen will find an abundance of deer, black bear, bass, brook and lake trout, dore and other fish.



Huberdeau is also on the Canadian National Railway line, where during the Summer season there is a daily train service from Montreal.

In addition to the churches and stores there are two hotels, Auberge des Rapides, Chez Moi, and Hotel des Pellerins.

From the Old World atmosphere of Huberdeau, with its village shrine and religious sanctuaries, one branches off the highway toward Otter Lake, stepping into a quaint contrast of rugged scenery. There is a suggestion of Rocky Mountain grandeur. Otter Lake House nestles comfortably among the trees on a gently rolling shore, but across the water a stern, rocky cliff towers over the lake. A shady island lies midway between, and altogether this little sheltered resort offers a pleasing variety of scenery.

Téléphone No 2

### AUBERGE des RAPIDES CHEZ MOI

Accommodation pour Touristes  
et Voyageurs de Commerce

Endroit Idéal pour la Chasse  
et la Pêche

Bières et Vins

HUBERDEAU, P.Q.

### JOHN McLAUGHLIN

General Merchant

HUBERDEAU, QUE.

### JOS. GAUTHIER

Marchand Général  
General Merchant

Huberdeau, Co. Argenteuil, Qué.

### FORTIER

Restaurant and Butcher

HUBERDEAU, QUE.

## Tobin's Travel Bureau

STEAMSHIP TICKETS - AIRWAYS - MOTOR COACHES  
CRUISES - TOURS - PRIVATE CARS - HOTELS  
Experienced unbiased advice given without charge  
Let us handle your next trip

LEO S. TOBIN, President  
1409 PEEL ST. TEL. PL. 9613 MONTREAL



Huberdeau

INVITES YOU



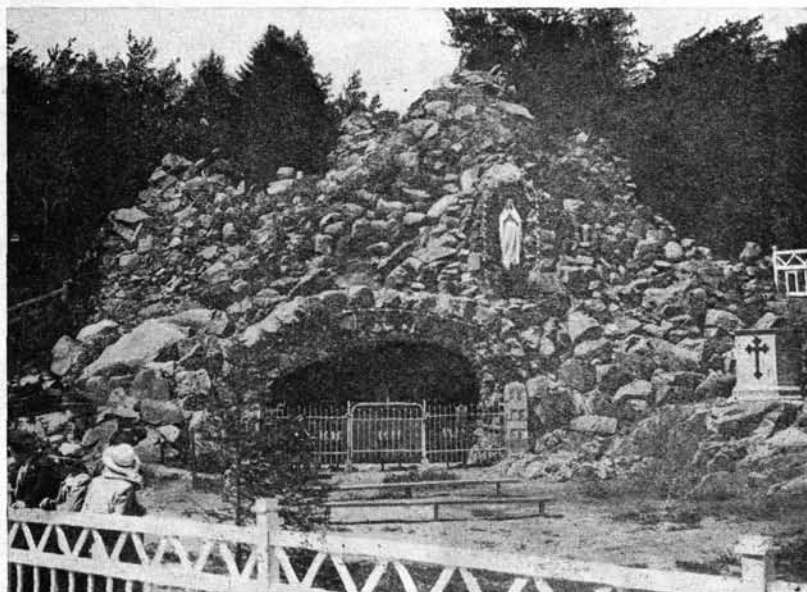
Accommodation pour Tourist et  
voyageur de Commerce.

## HOTEL des PELLERINS

Endroit idéal pour pêche et chasse.  
Pension Canadienne.

•  
Ideal place for Fishing and Hunting  
Home-made Cooking

•  
JOS. RICHER, Prop.  
HUBERDEAU, QUE.



The famous shrine at Huberdeau

## OTTER LAKE HOUSE

Huberdeau, P.Q.

A Summer and Winter Resort in  
the heart of the Laurentians.

Excellent accommodations.

Quiet and beautiful surroundings.

Delicious Meals.

City conveniences, good bathing,  
fishing, hiking, hunting and ski-  
ing. Tennis and Ping Pong. Near  
Barkmere Golf course.

The Home atmosphere will make  
your stay at Otter Lake House a  
comfortable, happy vacation.

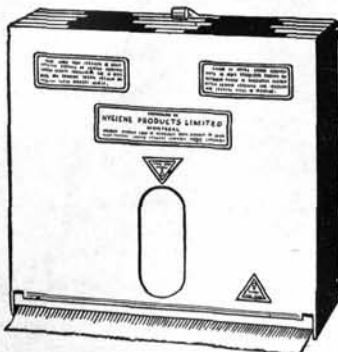
•  
Write for information to  
**HANS EBERMANN**  
Proprietor

**E. LeBEL**  
Boulangier - Baker

HUBERDEAU, QUE.

Good Rail and  
Motor Coach services  
cover the Laurentians.

SAVE 40% by using  
**HYPRO KRAFT TOWELS**  
in Rolls



HYGIENE PRODUCTS LTD.

Lancaster 0113

Montreal, Que.

Fishing in the Laurentians  
is a real delight.

**O**TTER LAKE is 2½ miles from  
Huberdeau, over a good auto-  
mobile road. It is a restful spot  
where one may enjoy quiet walks  
through the woods, to the Rouge River,  
or to Calvary and Grotto overlooking  
the village.

Summer recreations include boating,  
bathing, hiking and mountain climbing  
for energetic visitors. For fishermen  
there are speckled and grey trout, and  
bass are plentiful in the lakes nearby.  
In the fall there is good hunting, for  
deer and partridge, and in winter the  
surroundings are perfect for skiing; it  
is ideal as a starting point for cross-  
country runs. Incidentally, the services  
of a guide and ski instructor are avail-  
able to guests at Otter Lake House.

INSIST ON

**GH** Wood's

**SANITARY PRODUCTS**  
For Safe, Economical Sanitation

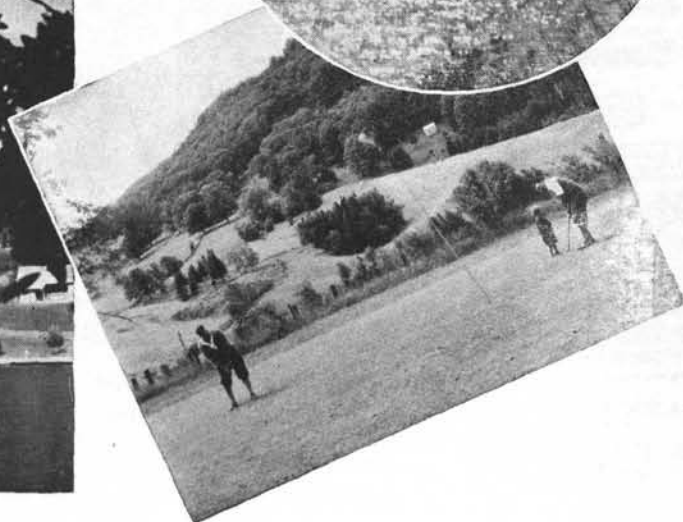
- Liquid Toilet and Clean-  
ing Soaps
- Izal Disinfectant
- Odourless Insecticide
- Deodorants
- Liquid Floor Wax
- Snowwhite Wall Wash
- Lace and Linenized  
Paper Doilies
- Embossed Tray Covers
- Vortex Paper Cups
- Portable Water Coolers
- Scottitissue Paper Towels
- Scottitissue Toilet Tissue

**G. H. WOOD & COMPANY LIMITED**

440 St. Peter Street

Montreal

BRANCHES IN MOST LARGE CITIES



*Halftone Illustrations Courtesy Canadian National Railways.*

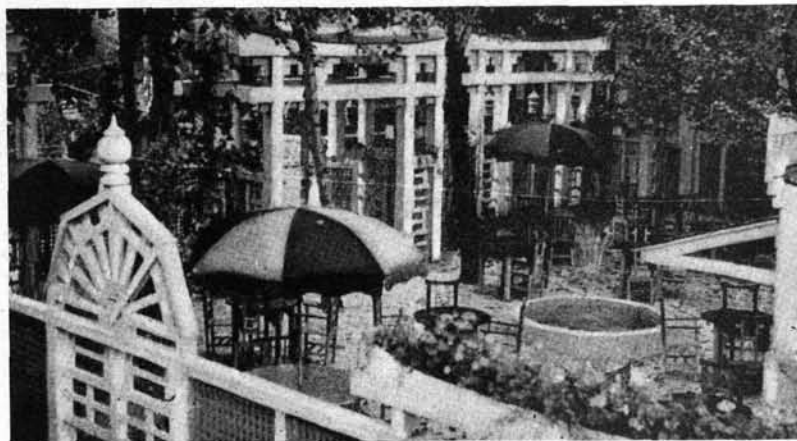


St. Jerome

INVITES YOU



Good Rail and  
Motor Coach services  
cover the Laurentians.



**F**ROM Montreal the highway runs in a north-westerly direction across the Island of Montreal, past Bordeaux, across the Rivière des Prairies to Ile Jésus, with its pretty little villages of Ste. Rose, Laval des Rapides and Rosemere.

Proceeding along the mainland, the town of St. Jérôme is passed. The gateway to the Laurentians, this pretty town was founded by Father Labelle, the pioneer of this district. His monument stands in front of the village church. The picturesque *Rivière du Nord* flows through the village which also boasts a golf course. Playing privileges are extended visitors. Hôtel La Pointe is the leading and most popular hotel in St. Jérôme.

**FISH . . .**

Yes, Sir! We have them - and what sport catching such a variety.

Game Bass—Speckled and Lake Trout, Pike, Dore, Deer, Moose and Bear. We have them all. Only 145 miles from Montreal over excellent highway. Bungalow Camp.

**WHITE DEER LODGE**  
White Deer, P.Q.

No. 8 Highway to Buckingham, turn north on No. 35 and watch for signs.

**S. DESORMEAUX**

Fabricant de Liqueurs Douces

Embouteilleur autorisé du  
Fameux COCA-COLA

Agent pour les  
Bières et Porters CARLING

TELEPHONE 95  
262, De Villemure  
SAINT-JEROME, QUE.

Fishing in the Laurentians  
is a real delight.

**HOTEL  
LAPOINTE**

**ST. JEROME, Que.**





*Laurentians*

**INVITE YOU**



**BLACK HORSE**  
*The Largest Selling  
Ale in Canada*



*Piedmont*  
**INVITES YOU**



**P**IEDMONT is situated 46 miles from Montreal on the main Ste. Agathe highway, and on the C.P.R. line, ten minutes from Shawbridge. It is a Laurentian village which presents "a different scene" along the mountain route.

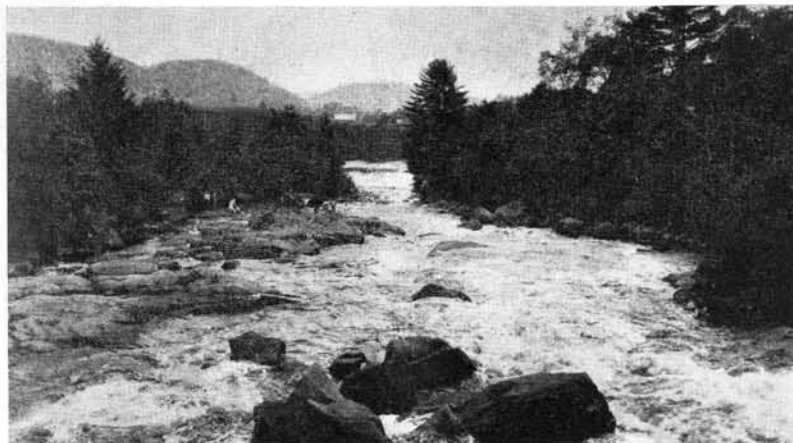
For Piedmont has no golf club or dance halls, only the quiet of green hills and a peaceful river with sandy bathing beach.

From the station, the view up the hill discloses the little winding street which forms the village, consisting of a few houses and a hotel.

From the village are delightful walks on quiet side-roads where one can forget that the main highway to Ste. Agathe, with its thousands of cars, runs through the village.

One mile up a pleasant road leads to St. Sauveur, a pretty little village at the foot of Mount Corbeil.

There is also a splendid road branch-

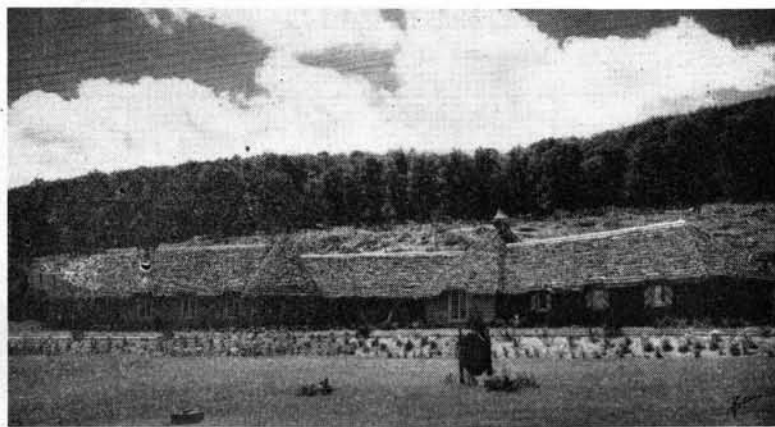


ing off to Morin Heights, which will connect with the new road now being built at Morin Heights to Sixteen Island Lake and Weir, linking up the highway with the Lachute highway which runs to St. Jovite.

The Toilet Laundries, of Montreal,

have an unique thatched building at Piedmont to serve their hundreds of customers in the Laurentians. An addition is being made to this novel building this Summer where Toilet Laundries girl employees will be given a holiday during the hot season.

After enjoying  
the Laurentians  
See the  
Beautiful  
Gaspé  
Peninsula  
by Motor



PIEDMONT EMPLOYEES' SUMMER RESIDENCE  
AND SERVICE DEPT.

**Servicing 10,000 sq. miles of  
the Laurentian Mountains.  
Laundry Dry Cleaning &  
Linen Supply**

**TOILET LAUNDRIES LTD.**

PHONE ST. ADELE 65

MONTREAL, WILBANK 5121



# Morin Heights

## INVITES YOU



Tel. Bell 38 R 3

### F. T. Watchorn

BUTCHER—BOUCHER

MORIN HEIGHTS P.Q.

OPEN ALL YEAR

### Minto House

MORIN HEIGHTS

(Mrs.) ANNIE KENNEDY, Proprietor

Telephone 32 r 2

Running Water, Electricity,  
Modern Conveniences,  
Moderate Rates.

GOOD WINTER SPORTS

### KILKARE COTTAGE

MORIN HEIGHTS, QUE.

A comfortable Home with City  
Conveniences in the Heart of  
the Laurentians. 52 Miles from  
Montreal. Good Hunting and  
Fishing. Also Winter Sports.

Motorists take Route 11 to Piedmont,  
then turn left six miles.—or via C.N.R.  
from Tunnel Terminal

J. H. ROBINSON, Prop.

Telephone 32 ring 3

### Laurentian Rest Inn

MORIN HEIGHTS, QUE.

Ideal for Comfort, Rest or  
Recreation  
All Modern Conveniences

OPEN ALL YEAR

Free use of Boats and Tennis Court

MODERATE RATES

Ski-ing hills all close to Inn

F. J. WATSON, Prop.



MORIN Heights affords everything that will contribute to the pleasure of the vacationist. It has an altitude of 1200 feet. Surrounded by virgin country, rolling hills and sparkling lakes, it converges upon a district ideal for hiking and motoring. There are good highways, rail service, postal service, excellent stores, and a host of residential establishments in which there is congenial company, hospitable atmosphere, and all the comforts of home.

The attraction of this particular district is evidenced in the organized campsites nearby. There is the Girl Guide's Camp situated on Lake Bouchette, a stone's throw north of the village; the Boy Scout's Camp on Lake Tamaracouta, and the Junior Y.M.C.A. Camp at Lake Kartawana, both to the south of Morin. Nearby there are Lake Anne, Lake Echo, and numerous lesser lakes.

Fishing in these waters is considered good, especially in the Spring and Fall months when the trout season is at its best. Off from the highways on every hand there is a rolling countryside ideal for hunting. For the more formal recreations of tennis and swimming, the visitor finds ample facility in courts and beaches at the various boarding establishments.

Morin Heights has some of the finest marked ski-trails in the mountains, traversing forests, through picturesque valleys, over gentle and steep slopes, several of them leading right to the mountain tops, from which excellent views are obtained. The new ski jump, erected in time for the Winter season of 1934, affords many a thrill to the jumpers.

Telephone 38 r 5

### DAVIS GARAGE

J. H. DAVIS, Proprietor

Automobile Livery  
Expert Mechanics  
Authorized Ford Dealers  
Acetylene Welding  
Parts of All Kinds  
Gasoline and Free Air  
Day and Night Service  
Automobile Accessories  
Batteries Repaired and Charged

Proprietor of  
DAVIS DANCE HALL

MORIN HEIGHTS, QUE.

### ALBERT CORBEIL BARBER

Light Refreshments

MORIN HEIGHTS, QUE.

### BELLEVUE HOUSE

MORIN HEIGHTS, QUE.



The house is electrically lighted, has hot and cold running water in rooms, comfortable drawing room with fireplace . . .

The Bellevue House is famous for food at most reasonable rates, both summer and winter.

This exclusive Farm Resort is beautifully situated, surrounded by mountain scenery . . . Five minutes' walk from the station and village . . .

Morin Heights and surroundings offer good sports for all seasons of the year.

Write, phone 15 r 14, or wire for reservations.

JOHN BASLER, Proprietor



*Morin Heights*  
**INVITES YOU**



THE  
**MIDGET THEATRE**  
MORIN HEIGHTS, QUE.

*Latest Talkies*

•  
News Reel — Short and  
Big Feature Film  
•

Thursday and Friday Evenings  
8.00 P.M.

**POPULAR PRICES**

**A district free from  
Hay Fever  
—The Laurentians.**



**F**OUR corners mark the business centre of Morin Heights. From the east the motorist arrives by the Piedmont Highway. To the north branches the Ste. Agathe road, passing through St. Adolphe on Lake St. Joseph. To the south lies the road to beautiful Lake Echo, two or three miles distant, passing the C.N.R. Station.

The drive continues, however, down the Lachute-Ste. Agathe Highway (Route 30) leaving Morin Heights by the west. Lake Hughes is passed several miles out, on the right hand side, Lake Barron (or Long Lake) on the left.

Telephone 15 r 3

**EDGAR  
BOYD**

Ice Cream Parlor  
Butter Factory

Transportation of all Kinds

**MORIN HEIGHTS, Que.**

**The Latest Travel Vogue  
Vacation in the  
Laurentians.**

Telephone 15—R 2

House: 38—R 2

**J. E. SEALE**

GENERAL MERCHANT

High Class Groceries - Paints and Hardware - Roofings - Cement Line

LAKE SHORE PROPERTIES

— also owner of —

**THE ARGENTEUIL LUMBER COMPANY LIMITED**

Rough and Dressed Lumber . . . Flooring . . . Round Peeled Logs for Log Cabin Construction

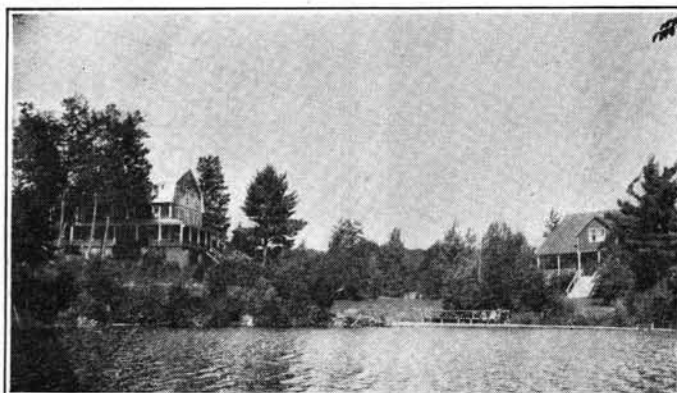
Everything in  
BUILDERS' SUPPLIES

**MORIN HEIGHTS, QUE.**



*Morin Heights*

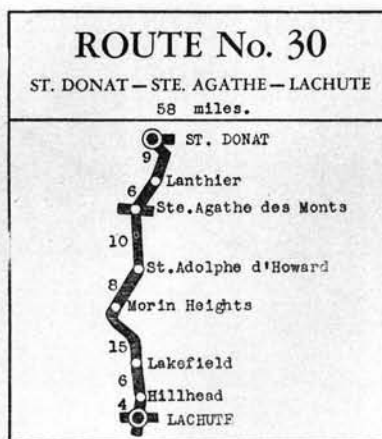
**INVITES YOU**



Morin Heights will greatly benefit from the opening of the new highway to Sixteen Island Lake, connecting with the Lachute highway at Weir.

A delightful impression of the Morin Heights territory may be secured by motorist, in a day's run, making a circular route from Montreal over splendid paved and gravel highways throughout.

There is a talking picture theatre and a sports field. For church-goers there are Roman Catholic, Anglican, and United Churches. Following are the hotels and boarding houses: Hawthorn Lodge, Minto House, Laurentian Rest Inn, Dew Drop Inn, Kilkare Cottage, Rock Cliff Inn, Bellevue House, Alpino House, Mountain View, Campbell's Farm, Kerr's Farm.



**Brilliant Sunshine,  
Let's go—Laurentians.**

## ROCK CLIFF INN

MORIN HEIGHTS, QUE.

Ideally situated on private lake in the famous Laurentian Mountains . . . embodying every comfort, feature and facility for a thoroughly enjoyable and satisfying vacation—at any season of the year.

FISHING • TENNIS • HUNTING  
PRIVATE GOLF COURSE • SHUFFLE BOARD COURTS

**A. B. Graves, Proprietor**

Telephone:  
Ste. Adèle 15 r 4

Telegraph:  
"ROCLI"

## ALPINO HOUSE LIMITED

YEAR ROUND RESORT — IN THE LAURENTIANS, P. QUE.  
(MAX BAUMEL, Pres.)



2 Miles from Village and Station on Highway Route 30 . . . In the midst of beautiful scenery. Pine and cedar-grove walks. 250 Acres of private grounds, 3 Lakes. Good swimming facilities. Good Brook and Lake Trout fishing. Tennis, and Riding Horses. Winter Sports, Ski Jump, Ski Trails. Electric Light. Fireplace. Hot and Cold Water in Rooms. Excellent Cuisine. Our own Farm Produce.

— TAXI MEETS TRAINS AT STATION —

Telephone—Line 32 r 11

MORIN HEIGHTS, QUE.



*Ste. Adele*  
**INVITES YOU**



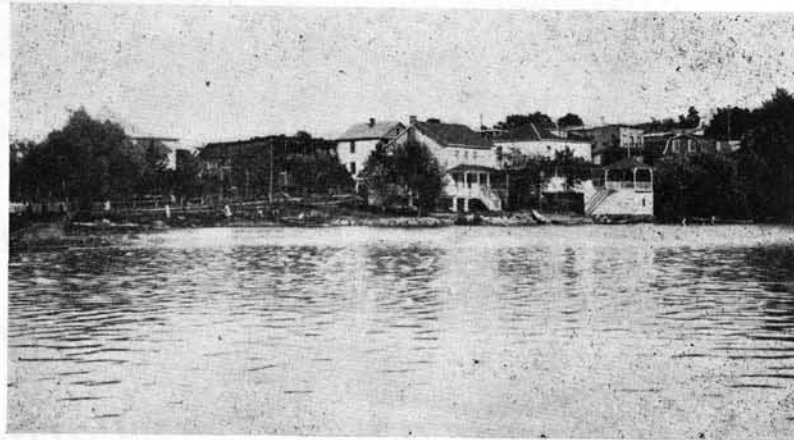
Tel. No. 9

## Maison Blanche

PRES DU LAC ROND  
NEAR LAC ROND

A. Marin, Propriétaire.

STE-ADELE - - - QUE.



ONE is immediately impressed with the pretty little French-Canadian village of Ste. Adele. It is charmingly situated with delightful views of the surrounding country.

Above, on Ste. Adele Mountain, a large cross has been erected, slightly smaller than on Mount Royal, Montreal, but—like it—illuminated at night.

Ste. Adele is fast becoming an attractive skiing centre, where hundreds find difficulty in being served at the hotels in the village, although every effort is made to accommodate the skiers.

In the village proper are two well equipped hotels—Maison Blanche and Hotel Liberte.

## House of "HARMONIE"

TOURISTS WELCOME

EXCELLENT FOOD

COTTAGES AND CAMPS  
TO RENT

ST. ADELE, QUE.

Chiriotto Farm Inn is one of the most unique inns in the Laurentians. It is a popular Summer and Winter resort.

The House of "Harmonic", with its famous windmill lunch room, is one of the landmarks along the main highway.

## HOTEL LALIBERTE

Lester Laliberté, Prop.

Excellente Cuisine—First Class Meals  
Bière et Vin—Beer and Wine

Notre Motto—SERVICE—Our Motto

STE-ADELE, en bas - Que.

## CHIRIOTTO FARM INN

ST. ADELE, QUE.

INN HAS 20 ROOMS—OPEN ALL YEAR ROUND. 15 MINUTES FROM RENAUD LAKE. SPLENDID BATHING AND FISHING. SAND BOWLING PROVIDES EXCELLENT SPORT. ONLY 52 MILES FROM MONTREAL.

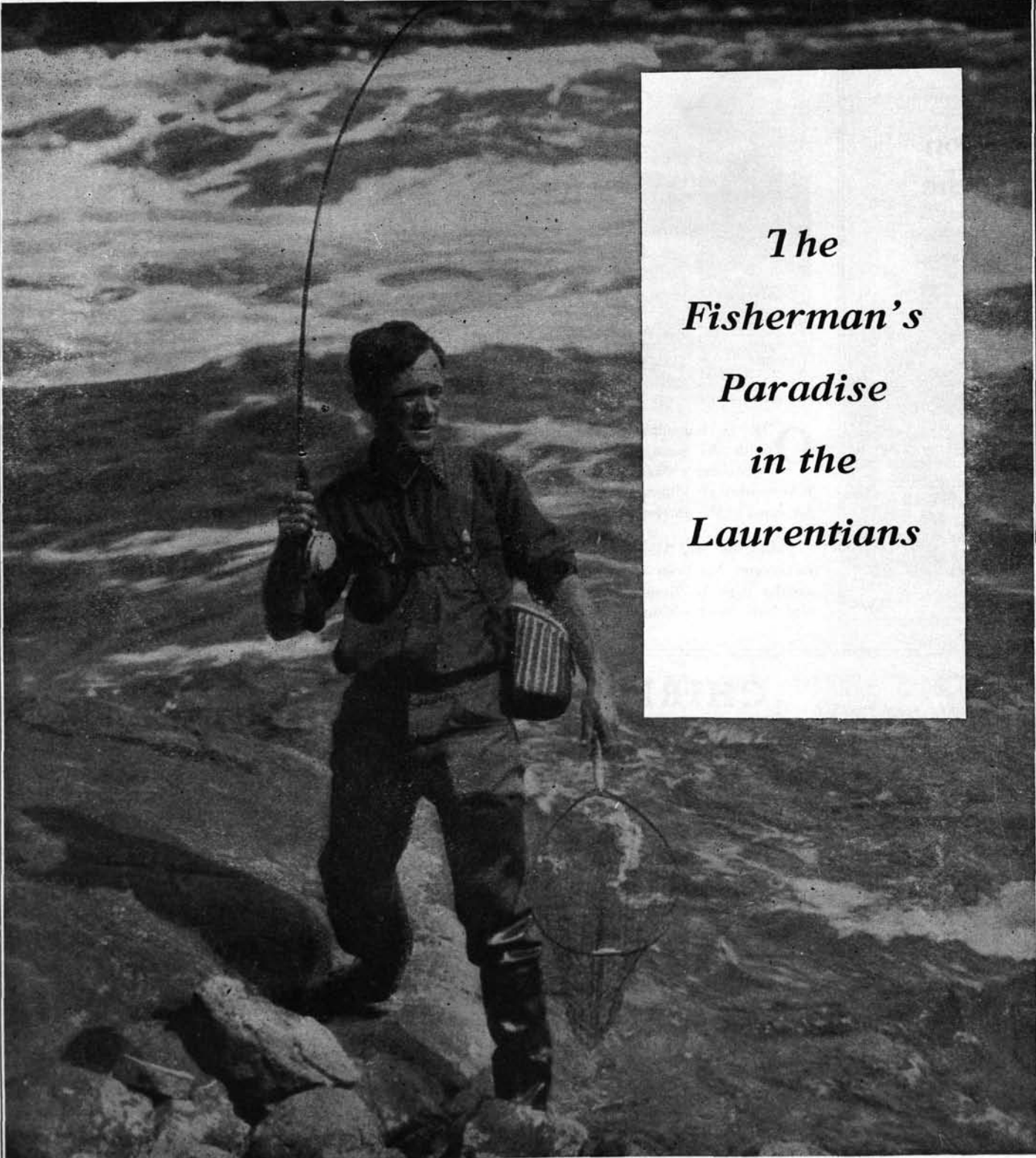


FRESH CREAM, MILK, EGGS AND CHICKENS. HOME GROWN VEGETABLES. NICE BABBLING BROOK RUNS PAST THE INN AND THROUGH 300-ACRE FARM.

ITALIAN AND FRENCH COOKING OUR SPECIALTY

Mont Rolland Station — C.P.R. Line

Telephone St. Adele 32 Ring 5



*The  
Fisherman's  
Paradise  
in the  
Laurentians*



*Ste. Marguerite*

**INVITES YOU**



**AMERICAN SPORTSMEN**

American citizens are allowed exemption on all duty charges to the extent of \$100. (under article 6059) of goods purchased or manufactured in Canada. Sportsmen, hunting or fishing in Canada, can save 35% on the cost of mounting trophies if done in Canada.

THE HOUSE OF LEARO are the leading taxidermists who cater to the American sportsmen and over 90 per cent of their trade is made up of United States citizens. A visit to their show rooms is suggested, where they display many trophies, caught in the Laurentians. They guarantee to deliver all goods duty free.



ONE cannot think of the Laurentians without at once thinking of the charming Ste. Marguerite district with its well-known and popular hotels, inns and lodges.

Leaving Mont Rolland the tourist travels five miles north to Ste. Marguerite Station. Below, a pale green among the rocks and trees, is the famous Laurentian Mountain hostelry, known as the Alpine Inn of the Ste. Margaret Club, the oldest golf club in the Laurentians, and one of the most picturesque in existence.

**Ste. Marguerite Lodge**

Located in the Finest Section of the Laurention Mountains

—  
**SKI-ING**  
**SKI-JUMPING**  
**SNOWSHOEING**  
**TOBOGGANING**  
**SLEIGHING**  
 —

Skiers—Novices and experts alike, will find an abundance of gradual and precipitous hills in the immediate vicinity of the Lodge.

**The Latest Travel Vogue**  
**Vacation in the**  
**Laurentians.**

**CHALET COCHAND**  
 IN THE LAURENTIANS

ST. MARGUERITE STATION, QUE



Chalet Cochand is situated in the most picturesque part of the Laurentian Mountains. You will find rest and relaxation in the cool Summer breeze, and gain an appetite from all the summer sports, for which our expert French Chef prepares the most



*The Swimming Pool at Chalet Cochand*

enticing food. The Chalet has all modern conveniences: running water in all rooms, and spacious rooms with private bath. Come and enjoy your summer vacation with us this summer.

**T H E P L A Y G R O U N D O F T H E L A U R E N T I A N S**

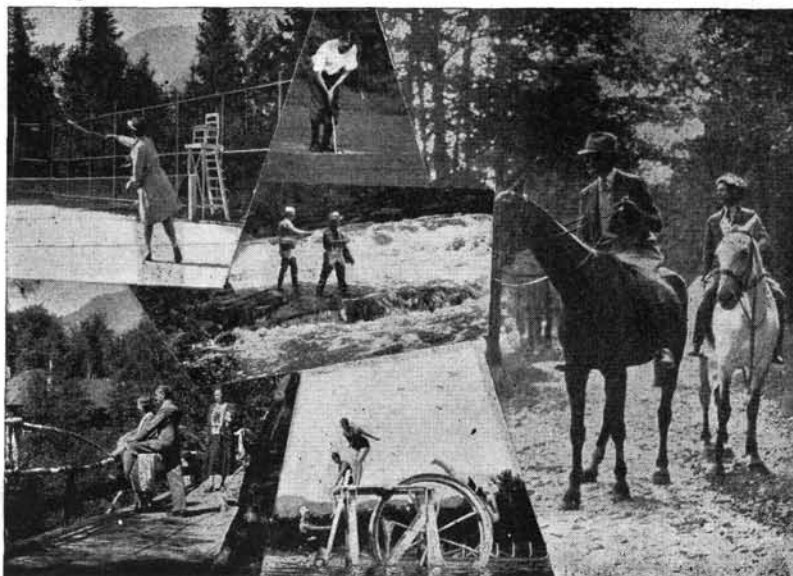
# Ste. Marguerite INVITES YOU.

Built of natural pine logs, the Inn nestles in the beautiful valley of Ste. Marguerite. The deep rustic brown of the logs, blends perfectly with the green pine and spruce forests and the silvery trunks of mountain birch that form a frame of natural beauty and marvelous charm. A covered verandah invites you to rest and enjoy the vista of gay flower beds and velvety green lawns that sweep down to the edge of rippling water that is cool and refreshing.

All this but 55 miles from Montreal . . . an overnight train journey from New York and Boston. The Inn enjoyed a record skiing season during the past Winter. It is open the year round.

Then there is the Ste. Marguerite Lodge, superbly located and equipped with all modern conveniences. It is but a hundred yards from the C.P.R. station.

A mile from the station is the Chalet Cochand, open all year round. The



hotel overlooks three lakes where trout are to be had in season. There are facilities for golf, tennis, and riding, while there is also a swimming pool.

Chalet Cochand is situated in one of the most picturesque parts of the Laurentians. Here you will find rest and relaxation in the cool Summer breezes,

and gain an appetite, from the many sports, for which an expert French chef prepares the most enticing food.

The Chalet has all modern conveniences, with running water in all rooms, and spacious rooms with private baths. During the past skiing season hundreds of reservations were refused owing to the unprecedented skiing season.

The motorist climbs higher, and after a final ascent Lac Masson appears in view. This lake is delightfully situated between high green hills, and so steep is the hill on which the village of Ste. Marguerite perches that the houses seem in considerable danger of falling into the lake. In Ste. Marguerite are hotels and boarding houses, boating, bathing and fishing in Lac Masson, and, for diversion, many delightful drives and walks to surrounding lakes and mountains.

The most popular hotel at Lac Masson is the Manoir Sainte Marguerite. It is open the year round and

## THE ALPINE INN

STE. MARGUERITE STATION  
LAURENTIAN MOUNTAINS, QUEBEC



Famous Log Chalet of the Laurentian Mountains. Fifty five miles from Montreal over Route 11 (turn right at St. Adele). Open the year round. Private Golf Course, Riding



Horses, Swimming Pool and Sandy Beach for bathing Tennis. All rooms with private bath or running water.

Restricted Clientele.

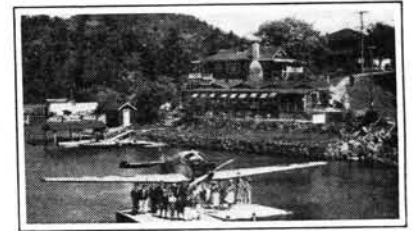
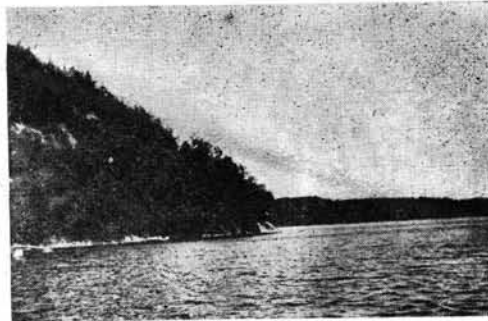
Rates \$4.50 to \$8.00 per day.  
American Plan.

CLARENCE W. HONEY  
Managing Director.



# Lac Masson

## INVITES YOU



makes a speciality of Summer and Winter sports.

It is one of the largest hotels in the Laurentians. There is running water in all the rooms, and an orchestra every night in season. The cuisine is famous throughout the mountains and with the cosy atmosphere one never tires of staying at this popular hostelry.

From Ste. Marguerite it is a delightful drive south to Lac Pic, through

picturesque woods of stiff tamarack and cedar. Two miles farther on are The Cascades, tumbling over the rocks in rugged beauty not far from its companion La Chute du Capitaine. Beside the rapids are rocky ledges popular as picnic grounds.

Returning to Ste. Marguerite, this time from the hills above, Lac Masson lies below like a glittering jewel.

Above Lac Masson is Mount Venus,

which stands like a challenge, and must certainly be climbed.

Almost directly north are Lac Oolahwan, Lac Charlebois and Lac des Iles. One of the points of reconnoitre is "Old Baldy," and from this mountain fifteen lakes may be counted on a clear day.

The country around Ste. Marguerite is particularly beautiful in Autumn, and the Summer visitor often stays on or returns after the first cold weather

## Villa-du-Lac

### Restaurant

LAC MASSON, P.Q.

has changed the maple to scarlet and the birch to gold. This time he packs his gun instead of fishing rod, and brings home the deer and partridge instead of trout and bass.

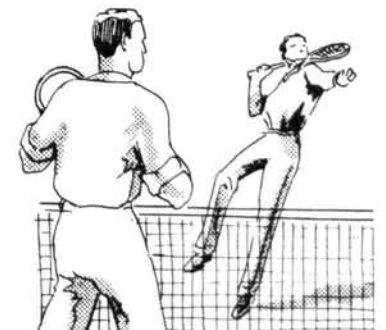
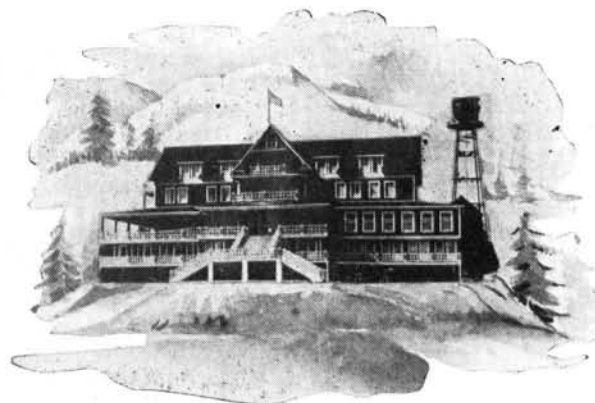
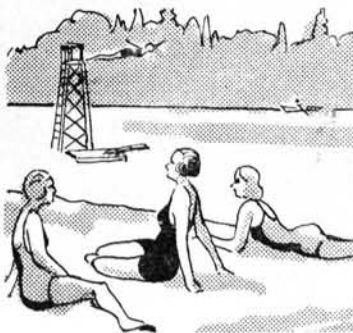


ORCHESTRA  
EVERY  
NIGHT.  
RUNNING WATER  
IN ALL THE  
ROOMS.  
REASONABLE RATES



MANOIR  
SAINT  
**MARGUERITE**  
LAC MASSON, P.Q.  
TEL. 20

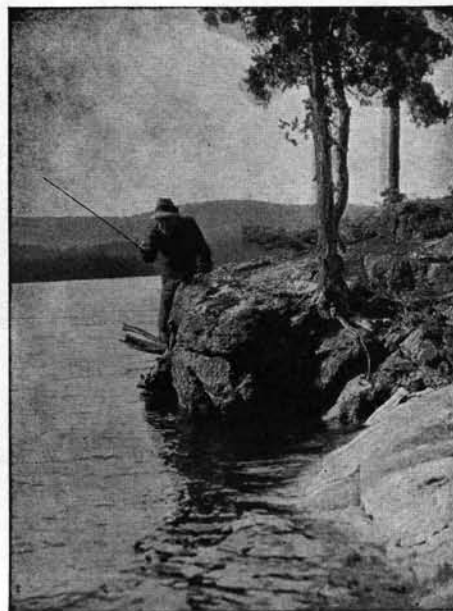
CUISINE A  
SPECIALTY.  
SUMMER and  
WINTER SPORTS.  
COSY ATMOSPHERE  
WRITE FOR FOLDER



Follow Route No. 11 from Montreal,  
Turn Right at Ste. Adele.



## Val David INVITES YOU



**V**AL DAVID Lake, reached by motor on route No. 11, (Ste. Agathe) is a beautiful sheet of water. It is entirely surrounded by well wooded mountains, and is among the ideal locations in the Laurentians. It has an altitude 1080 feet.

Val David Station, on the C.P.R. line, is only 56 miles from Montreal. A taxi service connects with the lake district. Motorists take route No. 11, up to within two miles of Val Morin, then turn to the right at the Val David Road intersection. The distance from the station can be covered in a five-minute walk.

Summer sports at Val David include tennis, bathing, canoeing, horse-riding, mountain climbing, fishing, and privileges at a nearby golf course. The Winter

sports include skiing, ski-joring, tobogganing, skating and snow-shoeing.

The chief attraction of Val David, however, is the La Sapinière, one of the most novel and comfortable inns in the Laurentians. An absolutely unique type of log construction, this

chalet possesses 20 rooms comfortably furnished and equipped with the most modern conveniences.

# LA SAPINIÈRE

VAL DAVID, QUE.

Ce chalet en bois rond comprend 20 chambres pourvues du confort le plus moderne.

Si idéalement située est La Sapinière que tous les sports, tant d'été que d'hiver, peuvent être exercés en toute sécurité dans les environs immédiats de l'hôtel.

Situé sur le magnifique lac Val David et entièrement environné de montagnes admirablement boisées, l'endroit par excellence des Laurentides.

Altitude 1,050 pieds.

### How to reach La Sapinière.

By Canadian Pacific Railway from Place Viger, Windsor or Jean-Talon station to Val David station (56 miles from Montreal) where a taxi service is at your disposal.

By motor—Route No. 11 (Ste. Agathe) up to within 2 miles north of Val Morin, then turn to the right at Val David road intersection and follow indicators.

Distance from the station, 5 minutes' walk.

Of an absolutely unique type of log construction, this chalet possesses 20 rooms comfortably furnished and equipped with the most modern conveniences.

Electricity throughout. Running hot and cold water in every room.

Situated on the beautiful lake Val David and entirely surrounded by well wooded mountains. The most ideal location in the Laurentians.

Altitude 1,050 feet.

Special rates for groups furnished on application.

CHOICE BEER AND WINE  
Telephone Ste. Agathe 17 Ring 22

L. DUFRESNE  
President

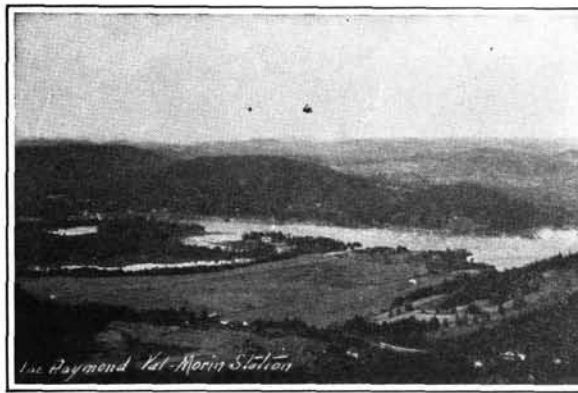
A. GRANGER  
Dir. Gérant  
Man'g Dir.



LE CHALET — THE CHALET



*Val Morin*  
**INVITES YOU**



## CAMP MAUPAS

LAC RAYMOND

Val Morin Station

2 Hours from Montreal by C.P.R.  
or Route No. 11



In the Laurentians

Open All Year Round

**V**AL MORIN has every variety of life for the summer vacationist. There are boarding houses to suit every purse, a tennis club where anyone may play, boating and bathing on the lake, and fishing up the river, which, for two miles before it widens into the lake, is navigable by boat or canoe.

The Val Morin Country Club has a beautifully kept 9-hole course, and gives privileges to summer guests. For accommodation there are several good hotels and boarding houses at the village and on the lake. Motor boats convey guests across the lake from the station to one popular inn set among the pine and white birch, which come down to the water's edge into a shady bathing beach.

The most popular hotels at Val Morin are the well-known Pinehurst Inn, and Camp Maupas, across the lake.

### AMERICAN AIRCRAFT VISITING CANADA

United States aircraft visiting Canada must hold Federal "NC" licence and pilot must also hold U.S. Federal Licence.

Aircraft should clear from a Customs Airport in the United States and advise the Commissioner of Customs, Ottawa, of the time of his intended arrival at a Customs Airport or Seaplane Port in Canada.

This notification must be sufficiently in advance of the anticipated arrival to permit the Commissioner of Customs to arrange for an officer to be present on the arrival of the aircraft.

No goods shall be removed, nor any passengers depart, from an aircraft which has arrived in Canada, without the consent of the Customs and Immigration Officer.

In event of a forced landing in Canada, the pilot shall forthwith report the fact to the nearest Officer of Customs or if unable to locate such an officer, he shall report the case to a peace officer.

If the visit to Canada is for "Health and Pleasure" a Tourist Permit form C-13 may be issued by the Customs Officer for a period not exceeding six months.

With this permit, it is not required to report further during the visit until the aircraft again clears for the United States.

American pilots may not engage in commercial aviation in Canada, nor may American registered aircraft be employed on any flying for remuneration done entirely within Canada.

**Good Rail and  
Motor Coach services  
cover the Laurentians.**

## AT PINEHURST

"Laurentians' Fountain of Youth"

"An Ideal Vacation Spot"

SAFE BATHING - BOATING - TENNIS - RIDING  
GOLF - MOUNTAIN HIKES - DANCING

HOMELIKE ATMOSPHERE

LOVELY SURROUNDINGS

REASONABLE RATES

Send for Our Illustrated Folder

## PINEHURST INN

AND COUNTRY CLUB, INC.

Lake Raymond

Val Morin Sta., Que.

If the aircraft and the pilot are licenced to carry passengers, they may do so internationally, but not between points in Canada, except in the case of passengers making a landing en route.

United States aircraft flying commercially shall proceed from port to port in Canada under a Manifest from A-7 and shall report to the Customs and Immigration official on arrival at each port and on departure therefrom.



# Laurentians INVITES YOU



## SKI-ING IN THE LAURENTIANS

**D**ESPITE the light snowfall in the early part of the past Winter railways and hotels report the best ski-ing season in the history of the Laurentians.

The season lasted longer than usual, due to the heavy snowfall in the middle of March, which made ski-ing conditions good until late in April, and particularly during the Easter holiday period.

One of the popular hotels reported turning down 727 reservations from New York during one week-end.

A new feature of the season was the running of a special ski train direct from New York. This proved so popular that the running of special trains is again considered for next Winter.

Records kept by the Canadian



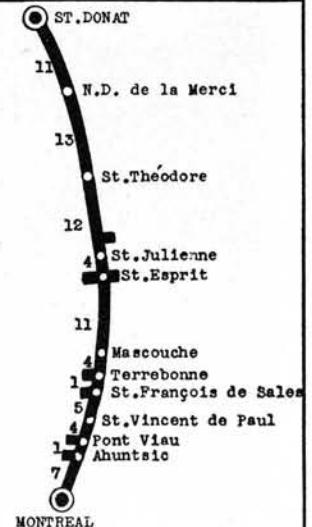
Pacific and Canadian National Railways show that more skiers were taken to the mountain resorts last Winter than during any previous season.

From the sweeping hills of the

Laurentians the skier's eyes take in a vista of humbled mountains stretching away for hundreds of miles. The beauty of it all holds the skier spell-bound, gripped by the calm serenity that Winter brings to the Laurentians.

## ROUTE No. 18

ST. DONAT—MONTREAL  
73 miles.



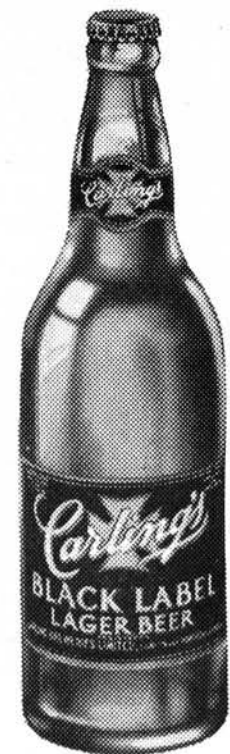
# Carling's

STRONG - HEARTY  
MELLOW  
**RED CAP  
ALE**

Properly aged — rich and  
full-bodied — satisfying.

BRACING—  
SPARKLING—  
REFRESHING—  
**BLACK LABEL  
LAGER BEER**

Healthful rice beer  
with an invigorating tang



CARLING BREWERIES LIMITED — MONTREAL



*Laurentians*

**INVITE YOU**



## LAURENTIAN HOTEL GUIDE

Arundel  
COOKE'S BOARDING HOUSE

Brownsburg  
CARRIER'S HOTEL  
ST. ONGE HOTEL

Huberdeau  
AUBERGE DES RAPIDES CHEZ MOI  
HOTEL DES PELLERINS

Lachute  
HOTEL DESJARDINS  
COSY REST INN

Lac Maskinonge  
THE PINES  
CHALET DES BRISES  
SANDY BEACH INN

Lost River  
LOST RIVER HOTEL

Lac Tremblant  
HOTEL LAC TREMBLANT

Lac Mercier  
SHADYNOOK INN  
THE WINDERMERE

Lac Quenouille  
MACKAY HOUSE  
HOLLYWOOD HOUSE

Otter Lake  
OTTER LAKE HOUSE

Morin Heights  
ROCKCLIFFE HOUSE  
ALPINO HOUSE  
BELLEVUE HOTEL  
LAURENTIAN HOUSE  
MINTO HOUSE  
KILLKARE COTTAGE

MacDonald Lake  
MACDONALD LAKE HOUSE  
DEER'S HEAD INN  
ROCKCLIFFE HOUSE

Pinehill  
PINEHILL HOTEL

Ste. Agathe  
LAURENTIDE INN  
HOTEL RAYMOND  
HOTEL BELMONT

St. Adele  
CHIRIOTTO FARM INN  
HOUSE OF "HARMONIE"  
MAISON BLANCHE  
HOTEL LALIBERTE

St. Donat  
MANOIR ST. DONAT  
ST. DONAT CHALET  
HOTEL LAC ARCHAMBAULT

Ste. Marguerite  
ALPINE INN  
CHALET COCHAND  
STE. MARGUERITE LODGE  
MANOIR STE. MARGUERITE (Lac Masson)

St. Jovite  
GRAY ROCKS INN  
St. Jerome  
LAPOINTE HOTEL  
Val David  
LA SAPINIERE VAL DAVID

Val Morin  
PINEHURST INN  
CAMP MAUPAS  
Weir  
ROUND LAKE INN  
MOUNTAIN VIEW  
DAIRY FARM

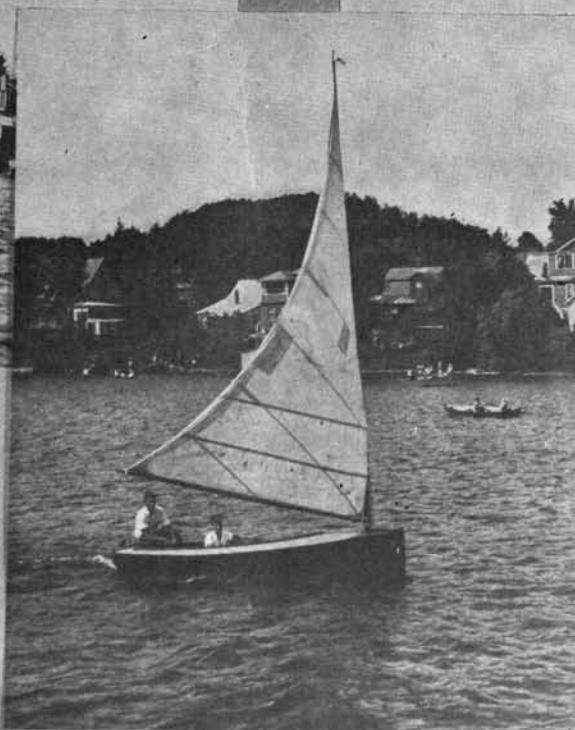


# STE. AGATHE DES MONTS



IN THE HEART OF

THE LAURENTIANS





*St. Agathe*  
**INVITES YOU**



Telephone 208 28 RUE ST-BRUNO

## Arthur Cyr

ENTREPRENEUR GENERAL  
GENERAL CONTRACTOR

*Plans et Estimations sur demande*  
*Plans and Estimates on demand*

Ste-Agathe des Monts - Que.



**S**TE. AGATHE DES MONTS, situated in the heart of the Laurentian Range, at an altitude of approximately 1,500 feet is reputed to be the most celebrated holiday and health resort in Eastern Canada.

Due to its situation and climatic conditions, practically every variety of out-door sports is available. In Summer, golf, riding and tennis are the vogue, while beautiful Lac des Sables on whose shores the town is built, lends itself to the enjoyment of all forms of aquatic sports.

In winter, the gleaming white slopes of the pine clad hills which ring the town and lake, provide a wide variety of ski-runs. Here the varied amateur and the most enthusiastic expert may find conditions suitable to their requirements. Visitors state that some of the cross-country trails compare favourably with those offered by the well known Swiss and Norwegian resorts. At this altitude, four months good skiing is assured.

The "Canadian St. Moritz" in the heart of the Laurentians

## HOTEL RAYMOND

20 Rooms with Bath.  
Hot and Cold Water in Each Room

Ste. Agathe des Monts  
Que.

## OMER ST. AMOUR PHARMACIEN DISPENSING CHEMIST

Sick Room Requisites, Prescriptions  
Phone 36-230

STE-AGATHE DES MONTS - P.Q.

Tel. 3 74 Rue PRINCIPALE

## STUDIO des LAURENTIDES

D. COTE, *Photographe, Prop.*

STE-AGATHE DES MONTS - P.Q.

## Eadie McNeilly Construction Co. Ltd.

President and Manager: J. A. Cloutier  
HARDWARE LUMBER and MILLWORK  
Also all kinds of Building Materials always on hand.

STE. AGATHE DES MONTS

Store and Office: 20 TOUR DU LAC - - - Phone 121  
Factory and Yard: ST. PAUL STREET - - - Phone 169-w

## LAURENTIDE INN

STE. AGATHE DES MONTS

*Heart of the Laurentians*



A Modern Inn  
Catering to a Select Clientele

Headquarters: STE. AGATHE YACHT CLUB



*St. Agathe*

**INVITES YOU**



After your  
Laurentian  
Holiday  
consider the  
beautiful trip  
to the  
SAGUENAY  
by

**Canada Steamship  
Lines**  
Comfortable  
Steamers



The Laurentide Inn at Ste. Agathe, is one of the premiere summer resorts of the Province of Quebec. With all the modern conveniences and comforts of a metropolitan hotel, it still retains the informal atmosphere of a wayside country Inn. Native fish and

game, fresh fruits and vegetables, prepared by expert French Chefs, attractively served in the hospitable dining hall or on one of the terraces, aided by a well stocked wine cellar make it a haven of delight for the most discriminating epicurean.

Tél. Bell 123

**JOSEPHAT RAYMOND**  
PLOMBIER—PLUMBER

—  
FERBLANTIER, COUVREUR et  
POSEUR de SYSTEME A EAU  
CHAUDE

—  
TINSMITH, ROOFER and  
STEAM FITTER

—  
1 Ave Préfontaine Est  
STE-AGATHE DES MONTS - P.Q.

**HOTEL BELMONT**

*Mde Armand Desjardins*

First Class Rooms and Board.  
Hot and Cold Water in every room.  
Beer and Wine—25 Rooms.

STE-AGATHE DES MONTS - QUE.

## Laurin Express Ltd.

Daily Service  
between

Service Quotidien  
entre

MONTREAL - ST. JEROME  
STE. AGATHE - STE. JOVITE

LOCAL and LONG DISTANCE

# MOVING

All goods insured for full value

**FRontenac 5755**

Office and Warehouse:

1205 Dorchester St. East, Montreal, Que.

## CLARKE'S RIDING ACADEMY

Saddle Horses  
for Hire

Qualified Instructor in  
Attendance.

•  
CUTTERS and  
SLEIGHS for winter  
service.



DAY AND NIGHT TAXI SERVICE

TEL. 81

TOUR DU LAC

STE. AGATHE DES MONTS - - QUE.



*St. Agathe*  
**INVITES YOU**



## Garage Paquette

Ste-Agathe des Monts - Qué.  
REPARATIONS DE TOUT GENRE  
STATION DE SERVICE SHELL



JOHNSON SEA HORSE  
VENTES ET SERVICE



Hotel Raymond is a popular tourist and commercial hotel, and is one of the best equipped hotels in the Province of Quebec. It has hot and cold water in every room, and many rooms with bath.

Belmont Hotel is a smaller but a well equipped and comfortable hotel.

There is no town in the Laurentians where there are better stores, churches or other buildings. There is a magnificent post office and other public edifices.

Ste. Agathe is the headquarters of the Laurentian Resorts Association, of which Mr. Gaston Gibeault is Secretary.

Tel. 60 5 RUE PREFONTAINE

**GASTON GIBEAULT**  
AVOCAT

STE-AGATHE DES MONTS - QUE.

Tel. 188-J

Boite Postale 86

**ESDRAS  
MAILLE**

GARAGISTE

STATION DE GAZOLINE  
REMORQUAGE  
DEBOSSAGE ET PEINTURE  
SOUDURE A L'OXYGENE

RUE PRINCIPALE  
Ste-Agathe des Monts - Que.

**HECTOR'S**  
COFFEE SHOP  
RESTAURANT  
Opposite Post Office

STE-AGATHE DES MONTS - P.Q.

TELEPHONE 183

# J. L. BRISSETTE

*Manufacturier D'eaux Gazeuses de Haute Qualité*

*Agent pour Molson's Brewery Limited*

*Embouteilleur Autorisé de Coca-Cola*



Boite Postale 297

Ste. Agathe des Monts, Que.



## Lac Quenouille INVITES YOU



IX miles northeast of St. Faustin lies Lac Quenouilles, beautifully situated in a hollow surrounded with verdant hills. This lake is reached from Ste. Agathe by a good gravel road—a distance of about 12 miles.

For those wishing a more varied entertainment there is the Mackay House, without question one of the most attractive and well-equipped hotels in the Laurentians, with all the Summer perquisites of tennis, dancing, swimming, boating and other popular pastimes.

The Hollywood House is also well equipped to give the utmost enjoyment to its guests, in an atmosphere of hospitality.



## "HOLLYWOOD HOUSE"

LAC QUENOUILLE  
NEAR ST. FAUSTIN

Ideal location. Tennis, boating, bathing, fishing.  
Excellent meals. Christian clientele.

Rates \$12.00 a week.

WRITE MISS KENNEY, ABOVE ADDRESS  
Phone St. Agricole—7-0 Ring 2

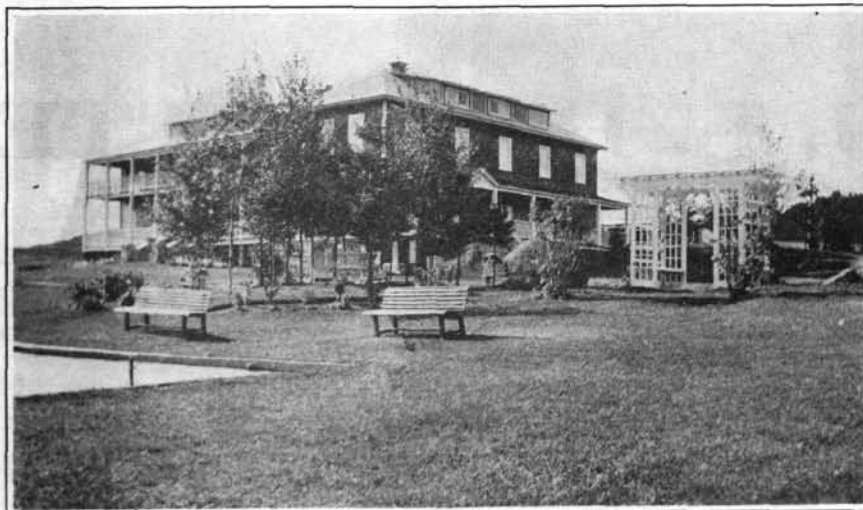
## THE MACKAY HOUSE

LAC QUENOUILLE, P.Q. On the Crest of the Laurentians

75 MILES FROM  
MONTREAL

Private Bathing Beach.  
Boats and Canoes. Red  
Trout in Lake. New Put-  
ting Green for Golfers.  
Tennis and Croquet.  
Milk, Cream, Eggs, Fresh  
Vegetables are provided  
from our own Farm.

Postal Address:  
LAC QUENOUILLE  
P.Q.



12 MILES FROM  
STE. AGATHE

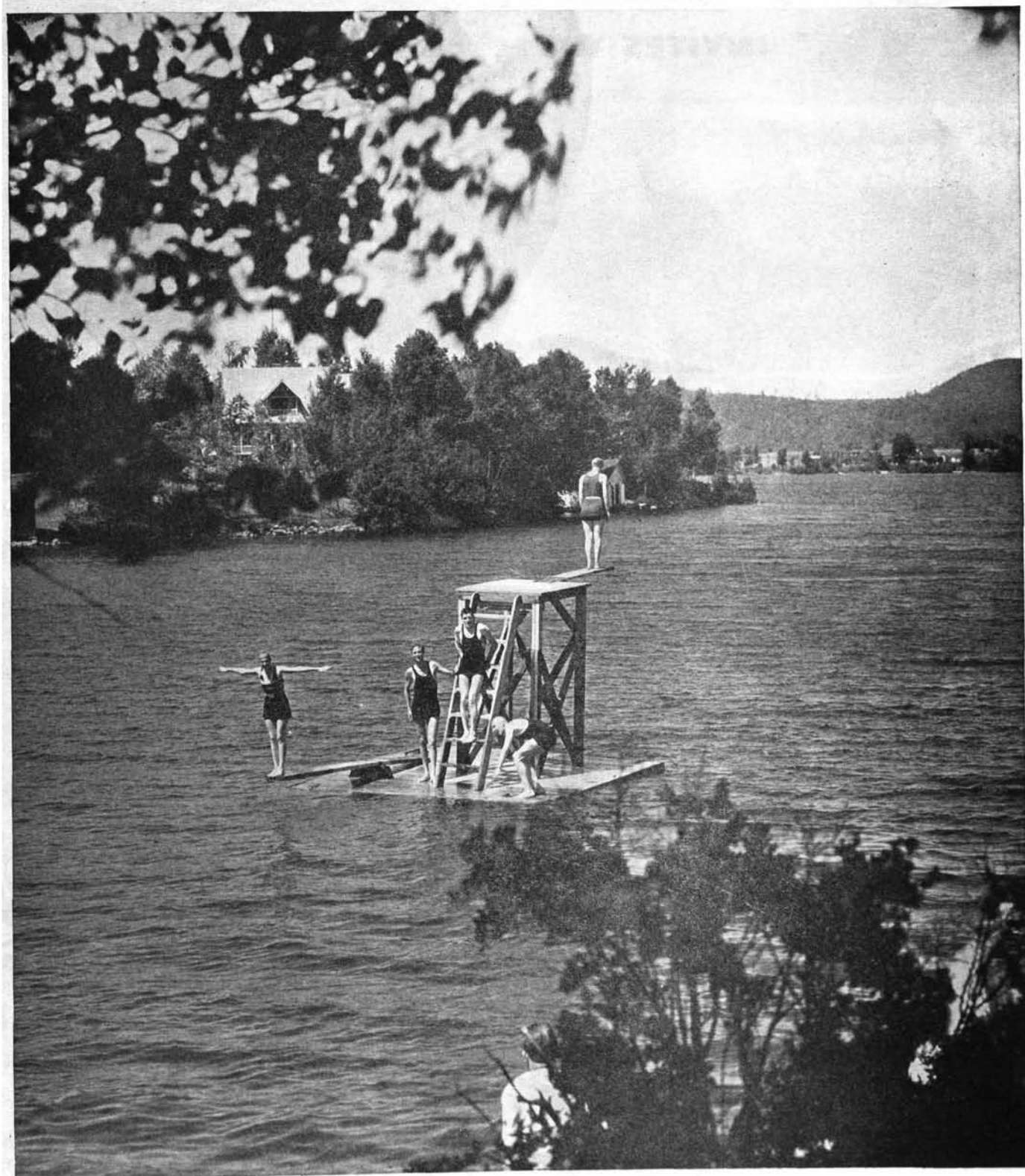
Hot and Cold Running  
Water in Bath and Wash  
Rooms. Home-Made  
Bread, Pastry and Cakes.  
Delightful Social Atmos-  
phere. Recreation Hall  
for Dancing. Large Stone  
Fireplace.

Tel: ST. AGRICOLE  
70-R-11 (St. Jovite)

Well Known for Excellence of Food

A REAL VACATION AT THE MACKAY HOUSE

A. F. T. and M. WAYTE, Proprietors




Halftone Illustrations Courtesy Canadian Pacific Railways.

*St. Jovite*  
**INVITES YOU**



**T**HE grey rocks of Lac Ouimet, three miles north of St. Jovite, have been made famous by a popular Inn which is open Summer and Winter. Grey Rocks Inn has been catering to the public for more than 30 years and it is known in all parts of Canada and the United States.

In spite of larger buildings and increased accommodation the inn has had to turn away, at times, would-be patrons. It is beautifully situated on Lac Ouimet, itself a part of the estate to which the inn belongs, and looks across at Mont Tremblant (2,474 feet), the highest peak in the Laurentians.







# GRAY ROCKS INN

**in the LAURENTIAN MOUNTAINS**

Eighty-six miles north of Montreal—over night from New York or Boston. In a primitive setting, enveloped by a panorama of mountain beauty, this distinctive resort gives you everything that Nature and modernity can give in a vacation. Golf—fishing—tennis—riding—swimming (safe beach for children)—hiking over mountain trails. Ample accommodation. Hot and cold water in all rooms. Excellent cuisine. Rates reasonable.

*Write for folder and rates*  
**F. H. WHEELER, Managing Director**  
**ST. JOVITE, QUEBEC.**




*St. Jovite*

**INVITES YOU**



Phone No. 35

## T. WATCHORN

Fruits, Vegetables, High Grade Groceries, Butter and Eggs direct from the Farm, Tea, Coffee, Spices

Fruits, Légumes, Epicerie de Choix, Oeufs et Beurre Direct de la Campagne, Thé, Café, Epices

ARGENT COMPTANT  
SPOT CASH

ST. JOVITE STATION



**S**T. JOVITE is 82 miles from Montreal, at the junction of Route 31. It has an altitude of 700 feet. It is on the Canadian Pacific Railway line and has a population of 900 persons.

The Boulee River runs through St. Jovite, and in Winter it is among the most popular resorts for skiing, tobogganing and other sports.

In season there is good deer hunting in the district and an occasional moose has fallen to the lot of hunters. Cold Lake itself is a comfortable log camp completely equipped with eider-down sleeping bags, canoes, and other equipment, and has reliable and efficient guides in charge.

Although this district is accessible by the voyageur's route we strongly recommend aerial transportation. There is very little difference in the actual cost when the time element (an important factor to most fishermen) is taken into consideration as the entire holiday may then be spent on the fishing grounds.

The fishing in the immediate vicinity of St. Jovite is fair, but not the best. Although Lac Ouimet and adjacent lakes offer interesting possibilities in black bass and both red and gray trout, it is evident that the accessibility of the lakes does not tend to help the conservation of our fish, in spite of frequent re-stocking.

## Maison Moise

MAGASIN DE CHOIX

M. MILLER, Prop.

WE SPECIALIZE

In LADIES' and GENTS' READY-TO-WEAR and BEACHWEAR

ST. JOVITE - - QUE.

Tel. 42

## SALON ALICE



Coiffure de tout genre, Ondulation permanente avec ou sans électricité, Traitement du cuir chevelu, Manicure, Shampoo.

Hairdressing of all kinds, Permanent Waving with or without electricity, Dandruff Treatment, Manicure, Shampoo  
ST. JOVITE - - QUE.

## Sandy Beach Inn

Lake Maskinongé

ST. JOVITE - - QUE.

Bathing, Boating, Fishing, Tennis, Golf, Hunting, Dancing, Hiking, Picnics

L. SORDI, Prop. Telephone: 48-4

Tel. St-Jovite 42

## J. H. BOIVIN

TRANSPORT GENERAL

MONTREAL—ST-JOVITE

ENTREPOT

MONTREAL CENTRAL AUTO FREIGHT

70 De BRISOLE  
Tel. Plateau 7051

Good Rail and Motor Coach services cover the Laurentians.

Brilliant Sunshine, Let's go—Laurentians.

## GRENON AUTOMOBILE REGISTERED

Automobile — Frigidaire — Radio



ST-JOVITE  
Tel.47J

SIE-AGATHE  
Tel.127



Téléphone 27

## MAISON DURY

*A Typical General Store*

L'endroit par excellence pour  
l'achat d'articles et vêtements  
de sport et de toilette.

Choix de ville  
Prix de campagne

ST. JOVITE, QUE.



**L**AC MASKINONGE, at St. Jovite, is one of the prettiest lakes in the Laurentians. It is easy to reach as it is on the main highway between St. Jovite and the Arundel side of the mountains.

In addition to the hotels and boarding houses there are numerous Summer cottages. The lake is a popular place for Montrealers as well as American tourists.

All kinds of Summer pastimes are available at Lac Maskinonge, bathing facilities being excellent.

Among the popular hotels on the lake are The Pines, Chalet des Brises and Sandy Beach Inn.

Good Rail and  
Motor Coach services  
cover the Laurentians.

## CHALET DES BRISES

*"De Olde English Cooking"*

Where meals are delightfully  
appetizing with variety, nicely served.

Dine Overlooking the Lake  
Sandy bathing beach, boating, fishing,  
golf, tennis, dancing. Spacious lounge.

Open Fireplace  
Homelike atmosphere. Refined environ-  
ment highly recommended.

RATES: Double Rooms \$15.00 weekly.  
Single Rooms \$18.00 weekly.

LAKE MASKINONGE  
ST. JOVITE, QUE.

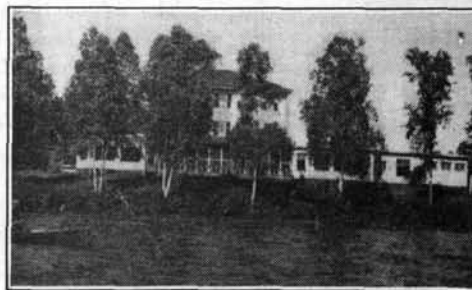
The Laurentians.  
are not crowded—  
you will be comfortable.

## GRADS Cigarettes

PLAIN and CORK TIP



## "THE PINES" LAKE MASKINONGE, ST. JOVITE, QUEBEC



Modern. Hot and cold running water in every room. Rooms with bath. Sandy bathing beach with water slide 200 feet long and water wheel. Tennis court, boating, canoeing, fishing, golf. Dancing and cabaret every evening with "The Pines" orchestra in attendance. Modern individual cottages with running water, overlooking beach.

Rates: From \$2.50 to \$3.50 per day.  
From \$12.00 to \$17.00 per week.

R. MARION, Mgr.

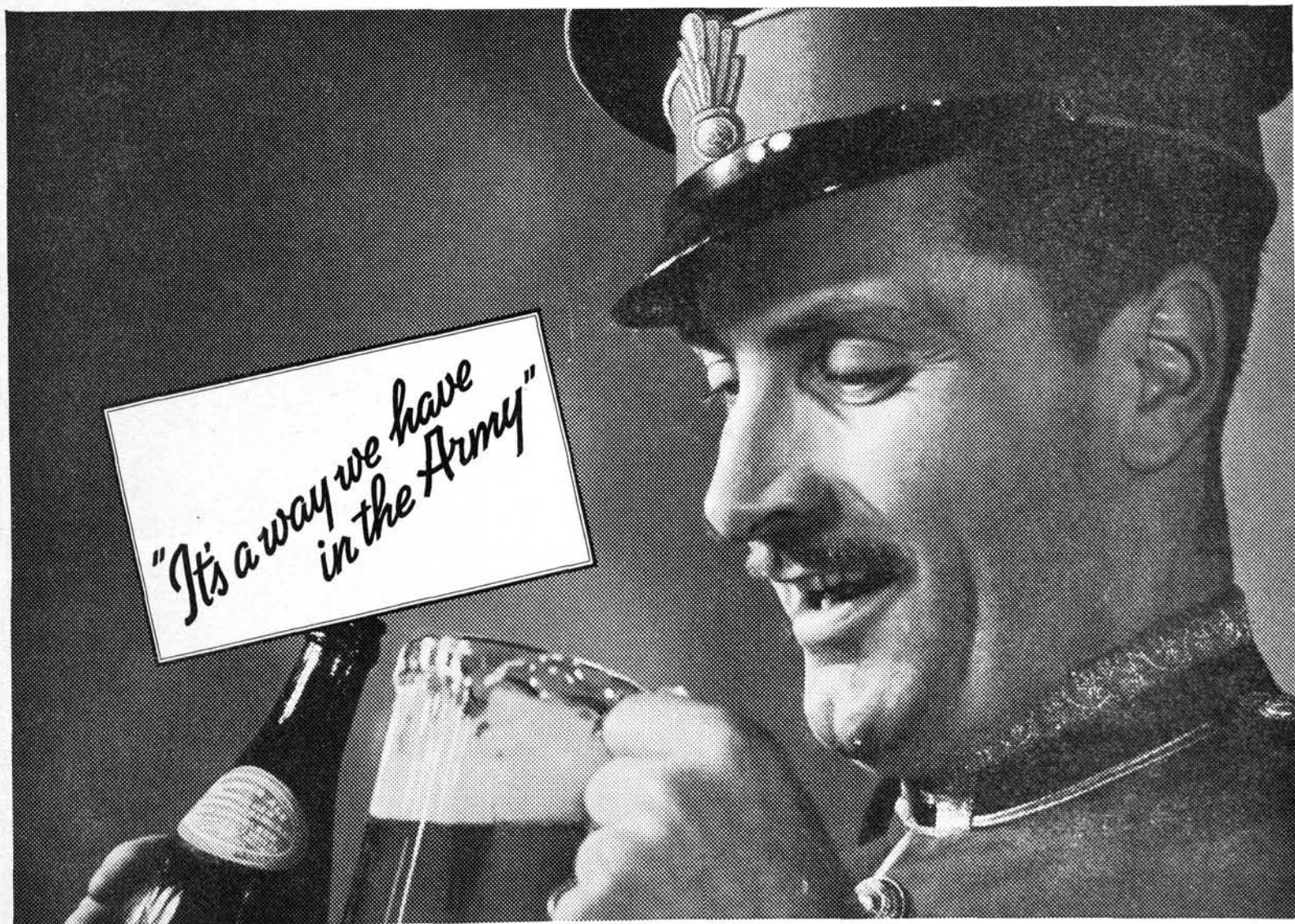
PHONE ST. JOVITE 48 R. 13

"Your Home in the Laurentians"



*Laurentians*

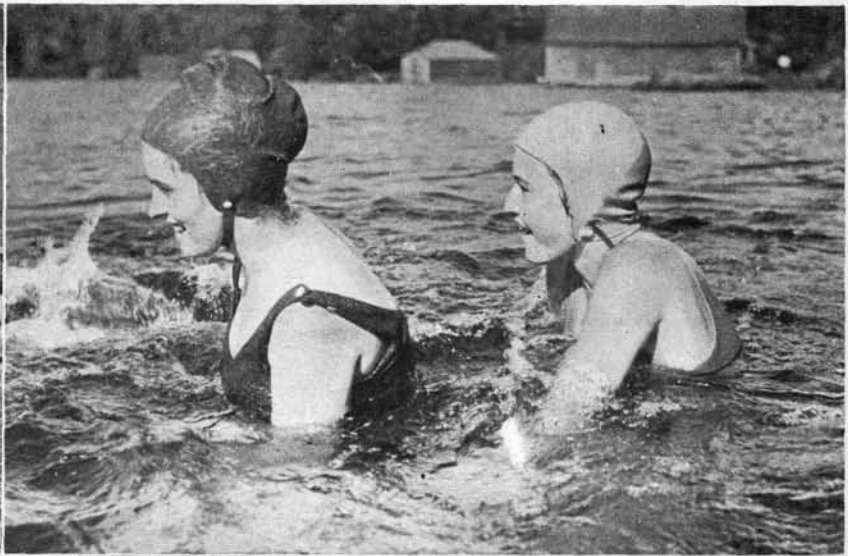
INVITE YOU



# MOLSON'S *Export* ALE

THE ALE YOUR GREAT - GRANDFATHER DRANK

---



Halftone Illustrations Courtesy Canadian Pacific Railways.



*Laurentians*

**INVITE YOU**



Smoke a **FRESH** cigarette

**British Consols**

## NEW FIREARMS LAW IN THE PROVINCE

**F**IREARMS of all kinds (rifles and shotguns, but not pistols and revolvers) and ammunition for these firearms, brought in by tourists for sporting purposes, are admitted into Canada duty free, but their owners should, within a reasonable period following their entry into the country, obtain a firearms permit, by making application to the Chief of Provincial Police, either at Montreal or Quebec. This does not apply to firearms in transit.

Pistols and revolvers are only admitted to the country on presenting a special permit, which must be obtained in advance, and on payment of a deposit, which will be refunded when the firearms are being taken out of the country.

The Laurentian Hotels welcome your enquiries.





*St. Donat*

**INVITES YOU**



**MUNDERLOH & CO.  
LIMITED**

GLASSWARE  
HOTEL WARE  
ELECTRIC FIXTURES  
LAMPS, ETC.

*Write for Catalogue*

Victoria Square  
MONTREAL



**F**ROM Ste. Agathe a splendid road leads 20 miles into the northern country of Lac Archambault. The road also leads past the few neat farms in the immediate neighborhood, past Lac Brule, with its Summer cottages, and west over the Prevost road to Ste. Lucie, a little habitant village on Lac Ménard, with a dozen or more summer cottages on its shore's edge. Here the road turns north again, passing great areas that 20 years ago were destroyed by fire. Where the second-growth forests are young and green, taking root first in the valleys and ravines, is the feeding ground of deer and moose tempted from the heavier woods by the tender shoots; and here is the hunter's country.

MArquette 1371      Established 1905

**PESNER BROS.**

LIMITED

*Grocers - Packers - Provisioners*

A Complete Food Service to  
Hotels, Steamships, Clubs, Institutions  
and Restaurants

968 Notre Dame St. West  
MONTREAL



**ST. DONAT CHALET**

SITUATED ON LAKE ARCHAMBAULT, ST. DONAT, QUE.

*"A Swiss Chalet in the Laurentians"*

St. Donat Chalet is a high grade bungalow camp, consisting of fifteen buildings, including the main chalet.

The panoramic view from the Chalet, is one of rare loveliness, embracing a vista of ever fifty mountain tops and Lake Archambault, an expansive stretch of water of great beauty.

The food served is of a superior quality and is renowned throughout the country.

**BATHING, BOATING, FISHING, TENNIS, HIKING, HUNTING  
RECREATION HALL**

Guests arriving via the Canadian Pacific Railway from Montreal (Place Viger or Park Ave. Stations) to St. Agathe (distance of sixty miles), thence by automobile to the Chalet.





*St. Donat*

**INVITES YOU**



Higher and higher the road leads over the hills, range upon range of mountains appear below, and at last Lac Archambault glitters into view. This is the district described so enthusiastically by Morris Longstreth in his book on the Laurentians.

Here are innumerable trails to follow, guides being obtained at Hotel Lac Archambault, a well equipped chalet, where all the comforts of modern life lie on one hand and the great north country on the other.

Fishermen will tell you that this district is one of the best fishing and hunting zones in the Laurentians.

**A**T St. Donat one is entranced by beautiful Lake Ouareau, one of the most picturesque of the Laurentian lakes.

Then there is Mount Rocher to be climbed. From it on a clear day, Mount Royal, in Montreal, may be seen, and some 28 lakes may be counted.

A trip to the little habitant village of St. Donat should be taken. It lies three miles away, past Lac Archambault, where the Fathers of the Blessed Sacrament have their Retreat.

In this district the scattered farms are more rude, the wayside shrines—marking some calamitous occasion, fire or drought—more numerous, and the land is very like that made famous through the pages of "Maria Chapdelaine".

Rendez-vous des Touristes

Accommodation for Tourists

Tennis - Chaloupes - Canots - Plage Sablonneuse

## HOTEL LAC ARCHAMBAULT

HECTOR BILODEAU, Prop.

30 CHAMBRES AVEC EAU CHAUDE ET FROIDE

Endroit idéal pour Chasse  
et Pêche

Chalets avec Chambres  
séparées

BIERE et VIN

Ideal spot for Hunting and  
Fishing

Bungalows with separate  
Rooms

BEER and WINE

— STATION HYDROPLANE SERVICE —

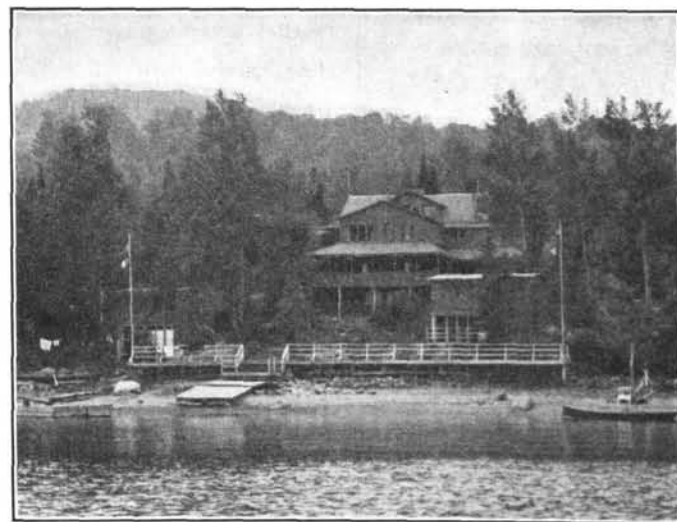
Telephone No. 1

**SAINT-DONAT, QUE.**

COMTE DE  
MONTCALM



## MANOIR SAINT DONAT



Genuine French Cooking — Table d'hôte or à la Carte  
Beer and Wine. Sand Beach, Trout Fishing—Hunting—Swimming—Boating—  
Mountain Climbing—Riding. Rates for Room and Board:  
Weekly: \$14 to \$17 — Daily: \$3 to \$4.

LUSSIER, (Compté de) MONTCALM COUNTY

Tel. No. 12



# Lac Mercier

## INVITES YOU



### J. R. LAVIGNE

GENERAL  
MERCHANT



POST OFFICE  
LAC MERCIER . . . QUE.



Téléphone Plateau 6637

### LAVIOLETTE, BARIBEAU LIMITEE

Epiciers en Gros  
Wholesale Grocers

D. LAVIOLETTE, Directeur-Gérant  
A. PAINCHAUD, Président  
L. BARIBEAU, Directeur des Ventes

345 rue Berri Street  
MONTREAL, QUE.

The Laurentians provide  
Hotel accommodation  
to suit every purse.

**F**IVE miles north of St. Jovite, and 90 miles from Montreal, is lovely little Lac Mercier, beautifully set between low green hills with Mont Tremblant towering over all.

On the shores of Lac Mercier is a pleasant Summer colony, with several hotels. The lake provides means for aquatic sport, while there are many attractive walks into the surrounding hills.

From the hotels guides may be obtained to conduct fishing and hunting parties into the mountains, while in Lac Mercier itself are grey, red and salmon trout.

In the Autumn the woods about shelter deer and moose, affording excellent sport for the visiting hunters.

There is also good fishing in the neighboring lakes of Ouimet, Killarney and Tremblant.

The well-equipped Shadynook Inn, is among the most popular inns of the Laurentians, where every comfort and convenience is afforded guests.

The Windermere, with its new improvements and addition on its lofty site on the lake, is another popular inn.

Sports: Golf Courses  
abound in the  
Laurentians.

Tél. St-Jovite

### Hotel Lac Tremblant

J. MEILLEUR, Prop.

—  
Bière et Vin

—  
Orchestre

LAC TREMBLANT, QUE.

### Windermere

LAKE MERCIER  
QUE.

Be sure you get what you are looking for. Try this popular modern resort in the heart of the Laurentians. Situated directly on the lake shore.

Rates from \$15 per week up.

Phone or write for reservations or booklet.



### SHADYNOOK INN

LAC MERCIER, QUE.

FOR A PERFECT HOLIDAY

Golf — Tennis — Bathing — Flying — Dancing — Motoring  
Canoeing — Orchestra — Exceptionally Reasonable Rates  
From \$3.00 per day and \$17.00 per week.



# Laurentians INVITE YOU



## CANADIAN CUSTOMS REGULATIONS

**F**OR a period of six months any motorist resident in the United States may enter Canada with his car without being obliged to make a deposit or file a bond with the Canadian Customs, providing he intends using his car for touring purposes only, and to return within that period. All that is required of the motorist is that he fill in a form giving particulars respecting his car. This form is made out in triplicate, one copy to be retained by the Customs officer. The other two, given to the motorist, are to be surrendered to the Customs officer at the port through which the motorist leaves Canada, which need not necessarily be the one through which he entered.

The motorist is required to carry with him the auto registration card identifying his car, as this must be produced on demand of the Canadian Customs officers.

Customs regulations regarding short-stay visitors have also been changed, by which the short-stay period is extended to forty-eight hours. For many years the regulations have authorized the admission, without the formality of the issuance of a permit, of

temporary visitors whose duration of stay did not exceed twenty-four hours and whose travel in Canada did not extend beyond the jurisdiction of the frontier port of arrival. This period has now been changed to forty-eight hours to include week-ends and public holidays.

Visitors to Canada are allowed to bring in, free of duty, 50 cigars and 200 cigarettes, as long as these cigars and cigarettes are in opened packages, and form part of their personal effects. Any additional quantity is subject to the ordinary provisions of the Tariff.

## ARTICLES FREE OF DUTY NEW FIREARMS LAW IN THE PROVINCE

**A**CCORDING TO THE UNITED STATES TARIFF REGULATIONS, residents of the United States returning from abroad may bring in free of duty articles up to \$100.00 in value, acquired for personal or household use, or as souvenirs or curios, if not intended for sale. Each member of a family is entitled to this exemption of \$100.00. Articles included within such exemption must be declared.

*Distinguished for Quality Since 1880*



*allan's*  
Beverages  
Limited



TRU-ORANGE — ROOT BEER — LIME RICKEY  
SYPHONS — SODA WATER

*Served by all the best Clubs, Hotels and Grocers in the Laurentians*

## GENERAL INFORMATION

### COST OF FISHING LICENSE FOR NON-RESIDENTS

\$26.00, for salmon, in favour of non-residents who are not lessees nor *bona-fide* members of an incorporated club which is a lessee of salmon fishing privileges in the Province of Quebec.

\$21.00, for salmon, in favour of non-residents, members of a club which is the lessee of a salmon river in the Province of Quebec.

\$10.50, for all fish other than salmon, for one whole season, in favour of non-residents who are not *bona-fide* members of a club nor lessees of fishing rights in the Province of Quebec.

\$5.25, for all fish other than salmon for one whole season, in favour of non-residents who are lessees of fishing rights. This license is valid also for the wife and children under eighteen years of age. The same permit is granted to non-residents who are proprietors of a summer residence in the Province of Quebec and children under eighteen years of age. The same permit is granted on the presentation of a certificate from the Secretary-Treasurer of the municipality.

\$5.25, for all fish other than salmon, in favour of non-residents and valid for a period of seven days. This permit is also valid for the holder's wife and children under eighteen years of age.

\$1.00 per day, with a maximum of \$5.00 for an indefinite stay, in favour of a non-resident, his wife and children under 18 years of age, who occupies a camp in the Laurentides National Park.

These licenses may be obtained from our Fish and Game Information Service, or from the Department of Mines and Fisheries, Parliament Buildings, Quebec City.

### OPEN FISHING SEASONS

**OUANANICHE or LAND-LOCKED SALMON**—(*Salmo salar ouananiche*) From December 1 to September 30.

Bag limit: four per day per person.

**TROUT**—Speckled or brook trout (*Salvelinus fontinalis*); red trout (*Salvelinus marstoni*); rainbow trout (*Salmo irideus*); brown trout (*Salmo fario*): from May 1 to September 30.

**TROUT**—Grey or lake trout (*Christivomer namaycush*) and sea trout (*Sal. oquassa*): from December 2 to October 14.

**BLACK BASS**—Small-mouthed black bass (*Micropterus dolomeiu*) and large-mouthed black bass (*Huro floridana*): from June 16 to March 31.

No black bass less than nine inches in length shall be retained.

**DORE or WALL-EYE PIKE**—(*Stizostedion vitreum*) From May 16 to April 14.

No doré less than fifteen inches in length shall be retained.

**MASKINONGE**—(*Esox masquinongy*) From June 16 to April 14.

Bag limit: four per day per person.

**WHITE FISH**—(*Coregonus*) From December 1 to November 9.

**PIKE or NORTHERN PIKE**—(*Exos lucius*) No closed season.

### SUMMARY OF THE FISHING LAWS

#### IT IS FORBIDDEN:

1—For all non-residents, even if they are lessees or members of

incorporated clubs, to fish in the waters of the Province of Quebec without having obtained a permit.

2—For all persons to fish other than by means of a line or a rod and line.

3—For all persons to fish with nets, seines, weirs or any other means without a special permit and for a designated location.

4—To use artificial light for the taking of fish by any means.

5—To use dynamite or any other explosives to catch or kill fish.

6—At all times to buy, sell or offer for sale or to have in possession for sale speckled trout, rainbow trout, black bass or maskinongé.

### COST OF GENERAL HUNTING LICENSE FOR NON-RESIDENTS

\$26.00 if not a member of a hunting club in the Province of Quebec.

\$10.50 if a *bona-fide* member of a hunting club which is a lessee of a hunting preserve in the Province of Quebec.

\$15.50 for waterfowl, shore birds and upland game birds.

*Permit to hunt caribou*: \$1.10. However, this special permit cannot be purchased without first procuring a general hunting licence of \$26.00 or \$10.50, as the case may be.

These licenses may be obtained from our Fish and Game Information Service, or from the Department of Mines and Fisheries, Parliament Buildings, Quebec City.

### OPEN HUNTING SEASONS AND GAME THAT CAN BE LAWFULLY KILLED BY NON-RESIDENTS, HOLDERS OF A HUNTING LICENSE

*Open hunting seasons and game laws are subject to change this coming season. Kindly communicate with our Fish and Game Information Service before starting your trip.*

#### GAME ANIMALS:

**MOOSE**—From September 10 to November 30 in the counties situated north of the St. Lawrence river; in the counties south of the St. Lawrence river, from September 20 to November 30.

**DEER**—From September 20 to November 20 in the counties situated north of the St. Lawrence river.

#### GAME BIRDS:

**UPLAND BIRDS**—Spruce partridge or Canada grouse, ruffed grouse and sharp-tailed grouse, from September 1 to December 15.

Willow ptarmigan or white partridge, from November 1 to January 31 following.

**WATERFOWL**—Duck (except wood duck and eider duck), geese (except brant), rails, coots and gallinules, from September 1 to October 31.

#### SEASON BAG LIMITS

**BIG GAME**—One moose, two deer, one caribou (with special permit) and any number of bears.

**UPLAND BIRDS**—No limit.

**WATERFOWL**—Bag limit per day: 12 ducks, 150 in one season; 5 geese, 50 in one season; 25 rails, coots and gallinules, 125 in the aggregate of all kinds in one season.

# WHERE'S JOE ?



— GONE FOR A

**Dow**  
Old Stock Ale



Deacidified using the Bookkeeper process.  
Neutralizing agent: Magnesium Oxide  
Treatment Date: Dec. 2007

**Preservation Technologies**  
A WORLD LEADER IN COLLECTIONS PRESERVATION  
111 Thomson Park Drive  
Cranberry Township, PA 16066  
(724) 779-2111

**ESTABLISHED 147 YEARS AGO**

# QUEBEC has! Everything! for a Holiday

BNQ



C 000 147 656



*This Province is known  
for Real Hospitality*

SPONSORED BY

**HARRISON  BROTHERS**

St. Catherine St. W. at the Glen  
POM HALL - MONTREAL, P.Q.

PHONE  
WE 3623

The POM bakers

**POM**  
Covers  
the  
Laurentians

**POM**  
Bread  
and  
Cake

147656

