

PARC NATIONAL DE LA POINTE-TAILLON

DISCOVERY GUIDE

2018



WELCOME TO THE PARK



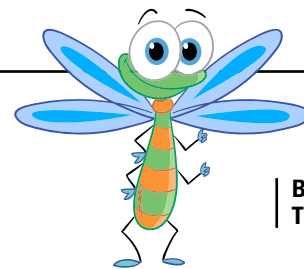
Lac Saint-Jean, beaches, cycling and...islands!

With its kilometres of sandy shores, a 45-kilometer bike path and primitive campsites on the shores of Lac Saint-Jean and Rivière Péribonka, this large peninsula is a slice of pure paradise! It offers great potential for the discovery and observation of plant and animal life, with 546 plant species, 139 bird species, including the magnificent sandhill crane, a large beaver population and a moose herd.

The new areas annexed to Parc national de la Pointe-Taillon, which will delight for outdoors enthusiasts, will soon be developed. Among these areas is a string of thirty islands and islets in the Saint-Gédéon area. A story to keep an eye on...

Welcome, and enjoy your visit to paradise!

Find out more at sepaq.com/pointetaillon



**BELLA
THE DRAGONFLY**

THE DRAGONFLY, THE PARK'S ANIMAL INSIGNIA

Fragile, floating, graceful beauty ... and dreaded predator! Many adjectives come to mind for describing this small, lively insect with amazing agility. This is an unusual species of dragonfly, seen mainly in the park's peat bogs in early summer. When it was identified in the park, the species had never been mentioned before in the Saguenay-Lac-Saint-Jean region.

**ANNUAL QUÉBEC
NATIONAL PARKS
CARD**

Québec's national parks offer a one-of-a-kind experience. Explore this exceptional world of nature with the Annual Québec National Parks Card, featuring:

- Unlimited access to ALL national parks for 12 full months
- Many exclusive benefits, including a free night of camping

Details at sepaq.com/parkscard

MUST-DOS



A

SWIMMING AND OTHER WATER SPORTS

Lac Saint-Jean is a true inland sea, whose water warms up quickly in the summer sun. The long, sandy, multicolored beaches invite you to relax. There is a big well-equipped beach that includes a supervised area. It offers free chairs and umbrellas, a children's playground and boat rental (canoe, pedal boat, kayak, stand up paddle boards).



B

CYCLING

Forty-five km of bike paths go all around the peninsula along Lac Saint-Jean and Rivière Péribonka. Easy and accessible to everyone, they cut through beaver and moose habitat.

Along the way, you'll find rest stops and signs of wildlife, as well as information about the fauna, flora and human history of Pointe Taillon. Bicycles are available at the park rental center.



C

WILDLIFE WATCHING

Keep your eyes peeled!

Watch for discreet signs of many animals. You never know when you could encounter a beaver or moose. For the best odds of spotting any of these animals, be there at dawn or dusk.



D

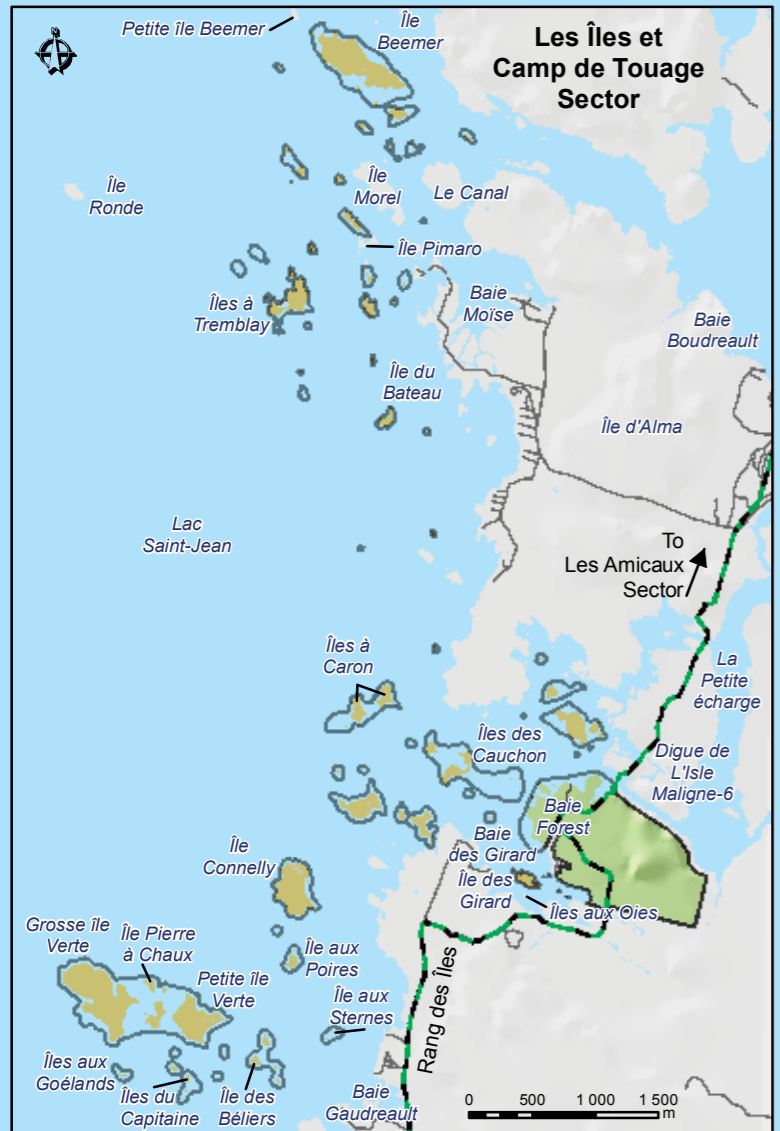
CAMPING AND CABIN ACCOMMODATIONS

The campsites are true oases, where you can enjoy the sandy beaches, the warm water of the lake and the peaceful setting. Primitive campsites are accessible via the bike path along Lac Saint-Jean, and others, along the banks of Rivière Péribonka, are accessible via the Péribonka water shuttle.

You can simplify your life with a ready-to-camp site: Twenty traditional or Étoile tents offer all the comfort you need on two sites that you can reach by bike or car. Another very comfortable option is the new fully-equipped Écho cabin. All of these options offer privileged access to Lac Saint-Jean.



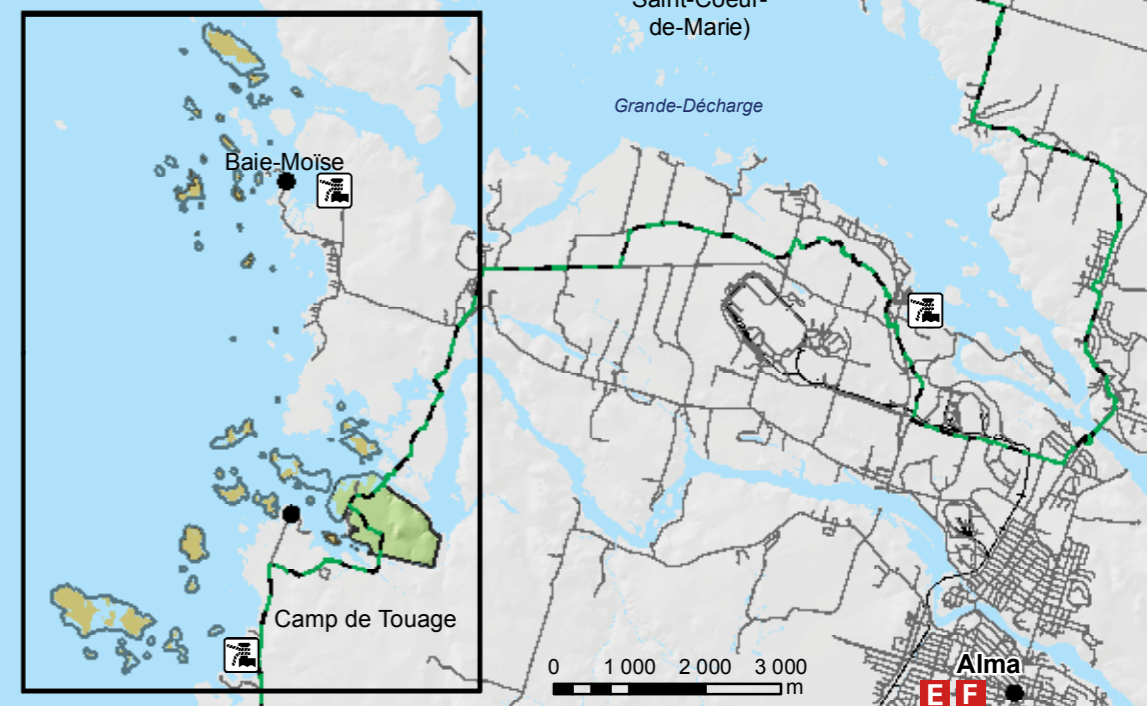
**NEW SECTOR
NEW OFFERING
UPCOMING ACTIVITIES**



A to I
SEE PAGE 12 FOR THE ACCOMMODATION LIST,
IDENTIFIED ON THIS MAP.

	Registration centre / Information		Washroom
	Playground		Observation tower
	Picnic area		Lifeguard on duty
	Camping / Ready-to-camp		First aid
	Rustic camping		Suggested kayak route
	Cabin		Bike path
	Rental		Boat shuttle
	Marina / Landing		Road network
	Rest stops		National park boundary
	Food services		Conservation zone
	Parking lot		Extreme conservation zone
	Telephone		

Cette carte intègre de l'information géographique de source gouvernementale. Pour des besoins de représentation, certaines données ont subi des transformations et des adaptations qui ont pu modifier la donnée originale. Données originales utilisées : Banque de données Sépaq 2018, Cartes topographiques à l'échelle de 1/20 000 1996-2000. Source des données utilisées : Ministère de l'Énergie et des Ressources naturelles © Gouvernement du Québec



DISCOVER OUR TRAILS

SITES TO DISCOVER	LENGTH AND DURATION (HOURS)*		LEVEL OF DIFFICULTY*	STARTING POINT
Tour of the park** – Pointe Taillon is a peninsula and is therefore surrounded by water. On one side is Lac Saint-Jean and on the other is Rivière Péribonka. Since most of the trail is right by the water, you can stop and take a break at various rest areas. There are not many hills.	45 km loop	5	D	Discovery and Visitors Centre
Pointe Chevette – This is where one of the last residents of Pointe-Taillon lived. Mr. Chevette was mandated to reforest the lands that had been left fallow after the lake level was raised and the settlers left. There is a rest area here with a shelter, a campsite, and the dock for the Péribonka water shuttle.	40 km round trip	4.5	D	
The lighthouse – This is the site of an old navigation beacon that was used in the timber floating era. The lighthouse is no longer there but it's a beautiful place to stop. (The water is shallow and warm ...)	20 km round trip	2.5	I	
The Véloroute and the delta crossing – The Véloroute des Bleuets circles Lac Saint-Jean and goes along the park's cycling paths. In both directions visitors will go across the big peat bog, travel over the rolling dunes of the delta and ride beside Lac Saint-Jean.	12 km round trip	1.5	F	Northern gatehouse or river

F : Easy **I** : Moderate **D** : Difficult

* The durations and difficulty levels mentioned are indicative and refer to the summer season.

** The majority of cyclists do not do the whole tour of the park. Depending on amount of time you have, you can ride part of the cycling path and come back the same way. Remember to bring water!



Photo: Mathieu Dupuis

HERE ARE A FEW EXTRAS WE HAVE IN PLACE FOR YOU TO SIMPLIFY YOUR LIFE AND TO HELP YOU SAVE MONEY.

For your children 17 years of age and under

FREE ACCESS
to national parks

EQUIPMENT LOAN*
for the outdoors

ACTIVITIES
VARIED AND REWARDING

ACCESSORIES*
ON LOAN FOR YOUNG CHILDREN

*Limited quantities available



Look out for this marker which identifies the ideal family

Discover all our family destinations at sepaq.com/family

OUR TOP PICKS

AT PARC NATIONAL DE LA POINTE-TAILLON

Take a look at our musts: an activity you won't want to miss, a trail to discover as a family, accommodations ideal for get-togethers.

- Supervised beach
- New playground in the beach sector
- Water volleyball
- Family nature rally



THE LARGEST NATURE AND OUTDOOR NETWORK IN QUÉBEC

The exceptional territories of Sépaq, including 24 national parks, are privileged destinations where you can enjoy all the benefits of an intimate contact with nature. Here's a special invitation from us to you: come relax at the heart of an authentic natural world that's the pride and joy of Quebecers!

24 NATIONAL PARKS | 14 WILDLIFE RESERVES | 8 TOURIST ESTABLISHMENTS | SÉPAQ ANTICOSTI

Discover all our destinations at sepaq.com



QUÉBEC NATIONAL PARKS DAY
September 8, 2018

SÉPAQ WINTER DAY
January 26, 2019



BOUTIQUES

Don't forget to visit our boutiques for a souvenir!

Profits are fully reinvested in Québec's national parks

DISCOVERY TIME



EQUIPMENT RENTAL

ÉQUIPEMENT	PER HOUR	4 HOURS	PER DAY
Adult bicycle	\$14.25	\$28.50	\$41.00
Children's bicycle, ages 17 and under (families)	Free	-	-
Children's bicycle, ages 17 and under – groups	\$7.00	\$14.25	\$20.50
Children's bike trailer	Free	-	-
Tandem bicycle	\$20.50	\$41.00	\$58.50
Electric bicycle	\$20.75	\$41.25	\$57.00
Fatbike	\$20.25	\$40.50	\$57.75
2-seat pedal boat	\$16.75	\$33.25	\$47.50
Canoe	\$17.25	\$34.50	\$49.50
Solo recreational kayak	\$15.50	\$31.50	\$45.00
Tandem recreational kayak	\$19.00	\$38.00	\$54.00
Solo sea kayak	\$17.50	\$35.50	\$50.50
Tandem sea kayak	\$23.75	\$47.50	\$67.75
Stand up paddle board (SUP)	\$17.25	\$30.00	\$43.00
Beach or cycling accessories	-	-	\$7.00

ACCOMMODATIONS

PRIMITIVE CAMPING

Starting at **\$23.²⁰** /night

CAMPING CYCLING BIKE TRAILER

\$102
/ night for 2 adults

Don't forget!

Primitive campsites are not accessible by car. They can be reached by bicycle, on foot or by boat. A baggage trailer is available free of charge. Drinking water is only available at the Discovery and Visitors Centre and the rental centre. Plan to bring enough water for your excursions and for your needs at the campsite

READY-TO-CAMP

TRADITIONAL

\$90

Low season

\$120

High season

ÉTOILE

\$100

Low season

\$130

High season

CABINS

5 new fully equipped Écho cabins on the shore of Lac Saint-Jean are available in the new Les Amicaux sector.



A LAND BORN OF WATER...

Pointe Taillon is a land of many faces that juts into the waters of Lac Saint-Jean. The sandy environment is very fragile. Consisting entirely of sand carried by Rivière Péribonka, the point was formed at the end of the last glaciation..

A beach, a lake, origins... using a basin, a park warden will illustrate how Pointe Taillon formed and explain the long-ago origins of Lac Saint-Jean.

Location: Beach kiosk

WILDLIFE

Animal life is intense in the park. Obvious clues, such as dams, huts and beveled tree trunks, reveal the presence of beaver. Moose have also established their headquarters in the park. In recent years, the sandhill crane has been seen in the territory. Its hoarse cries echo in the vastness of the bog... magical!

Moose are numerous at Pointe Taillon. Let a park warden show you how to read signs of their presence. Take a hike in the woods to learn all about the herd that lives in this national park.

Location: km 5 of the bike path



A PLACE OF HISTORY...

Between 1890 and 1930, a population of farmers settled on Pointe Taillon. In 1925, 52 families lived there and the total population was 307 people. There were three schools, a cheese factory and a sawmill. When Lac Saint-Jean became a reservoir lake in 1926, flooding displaced these families. Abandoned fields and sites where houses once stood testify to the human occupation of the site.

Have a chat with a member of the Hudon family. But don't be fooled, the Hudons of Jeanne-d'Arc still live in their time, 1916! An entertaining way to catch up on the latest news and gossip in this little corner of the world...

Location: km 6.5 km of the bike path

Larouche, Gaudreault, Fortin, Simard ou Tremblay?

Don't miss the new discovery panels along the cycling path about the first families who lived on the park's territory in the early 1900s. Who were the inhabitants of the village of Jeanne d'Arc and what were their daily lives like?



FLORA

Water is everywhere in the park. In the center of the point is a thick layer of vegetation made up of sphagnum moss. This vast peat bog acts as sponge that captures and retains rainwater. Besides the bog, where "carnivorous" plants are found, there are also ponds, marshes and aquatic meadows.

The peat bog is a trove of hidden secrets! A park warden will tell you how it was formed. You will discover a strange world populated with fascinating plants.

Location: km 1.5 of the bike path

Check the daily schedule posted at the Discovery and Visitors Centre. Activities may be added to this programme.

CONSERVE FOR TOMORROW



CONSERVATION ISSUES

The phenomenon of shoreline erosion at Parc Pointe-Taillon is worrisome. The level of Lac Saint-Jean, which differs the most from the natural cycle in the fall, can cause very active erosion of the Pointe Taillon shoreline when storms hit. Stabilization structures (ripraps, breakwaters, revegetation) were built in collaboration with Alcan, now Rio Tinto, to protect wildlife habitats and facilities subject to imminent threat. Since 2002, a shoreline monitoring program has been conducted annually. A system including 115 terminals was installed on the park's shores to measure the retreat of the shoreline and document this phenomenon.

An agreement in principle was reached between elected officials of Lac Saint-Jean, the Pekuakamiulnuatsh First Nation and Rio Tinto on a common position regarding participatory management and the level of Lac Saint-Jean. It is included as one of the conditions of the shoreline stabilization program decree for 2018-2027. When community actors agree to work together to find solutions to a problem, there is every reason to rejoice and be hopeful.

To find out more about conservation initiatives and issues in Québec's national parks, visit parcsquebec.com/blogue.



PLAY ^{IT} SAFE



In the wild, your **safety** is your **responsibility**

Photo : Steve Deschênes, Parc national des Grands-Jardins

Sépaq's mission is to ensure the widest possible access to Québec's most beautiful natural treasures. Sépaq is committed to the safety of its visitors and urges you to play it safe!

Preparing yourself adequately is the first step in the safe and enjoyable practice of your favourite activities. **YOU ARE RESPONSIBLE FOR YOUR OWN SAFETY** and risk management is an integral part of your experience.

Before leaving for an excursion, **MAKE SURE YOU HAVE THE SKILLS AND ABILITIES REQUIRED** to practice your chosen activity **AND RESPECT YOUR PHYSICAL LIMITS**. Your outing should leave you with nothing but pleasant memories. There are a number of organizations that can help you plan your activities safely. Do not hesitate to contact them. We also invite you to consult our safety guides for Sépaq activities on our website at

sepaq.com/security

CHECKLIST

BEFORE YOU LEAVE HOME

- Plan on going with at least one other person.
- Check the weather report.
- Pack water and food, even if the activity is only for a few hours.
- See that you have appropriate clothing and footwear for anticipated weather conditions.
- Let somebody know the exact location of your destination and the time you plan to return home

ONCE YOU ARE ON SITE

- Do not rely on your cellphone.
- Check how much time it will take to complete your activity.
- Obey signs and notices, including bans on open fires.

WHEN YOU GET BACK

- Once you have completed your activity, make sure that you report to our staff anything wrong or any damage or problems you encountered.

REMINDERS

-  During your visit to a national park, you must always carry your entry fee receipt or your annual entry card.
-  To preserve our natural riches, you are not allowed to remove any natural elements (animals, plants, dead wood, rocks, etc.). Please also keep to established hiking trails to avoid trampling flora.
-  Animals find all they need to eat in nature. Feeding wildlife can be very damaging. Keep food or garbage out of reach of animals.
-  We ask you to carry out all your garbage.
-  Domestic animals are not accepted in Québec's national parks. However, guide dogs and service dogs are admitted.

PILOT PROJECT AUTHORIZING DOGS

A pilot project is in place authorizing the presence of dogs in FRONTENAC, JACQUES-CARTIER and OKA national parks. As of May 18, 2018, the project will be expanded to include AIGUEBELLE and LAC-TÉMISCOUATA national parks. Please read the applicable rules and authorized places at sepaq.com/animals.

IN CASE OF EMERGENCY: 911

SÛRETÉ DU QUÉBEC: 310-4141 (general number) / *4141 (for cellphones)

*Where cellphone networks are available. The costs and expenses incurred in conducting search and rescue operations are the responsibility of the beneficiary. You can obtain protection against these risks from an insurer.

Parc national de la Pointe-Taillon

835, rang 3 Ouest
Saint-Henri-de-Taillon, Québec G0W 2X0
Information: 418 347-5371
Reservation: 1 800 665-6527
parc.pointe-taillon@sepaq.com
sepaq.com/pointetaillon

Legal Deposit: 2018
Bibliothèque et Archives nationales du Québec

Photos Parc national de la Pointe-Taillon,
Sépaq Francis Doucet, François Fabianek, Mathieu Dupuis,
Pierre Bernier, Sébastien Larose et Annie Fournier.



PÉRIBONKA WATER SHUTTLE



ACCOMMODATIONS AND ACTIVITIES IN THE AREA

MUNICIPALITY OF PÉRIBONKA

CAMPING: WIRELESS INTERNET ACCESS,
HEATED POOL, MINI-PUTT, WATER PLAY
AREAS, BIKE RENTAL

MARINA: SEA KAYAK RENTAL, BOAT RAMP,
DAILY DOCK RENTAL

**"LE BISTR'EAU PUB PÉRIBONKA"
RESTAURANT**

LOUIS-HÉMON MUSEUM

Information and reservation:
418 374-2967 #103 | 1 888 374-2967
cosep@peribonka.ca
www.peribonka.ca



From the village of Péribonka, this shuttle service ferries you across to the bike path in the national park and to the Pointe-Chevrette and l'Île-Bouliane campgrounds.

The shuttle is operated by the municipality of Péribonka for cyclists, pedestrians and campers. Use the parking lot at the right of the DJ Tremblay grocery store, facing the Péribonka marina.

No reservations are needed for the shuttle. Go directly to the marina in Péribonka or

Pointe-Chevrette to cross to the other shore. Payment is made at the Discovery and Visitors Centre or in the shuttle. Please show up a few minutes in advance.

**Schedule: every day, from June 15
to Septembre 9, 2018**

**From Thursday to Sunday, September 13
to 30, 2018**

RATES ¹ (TAXES INCLUDED)

	ADULT	CHILD	FAMILY
One way	\$8.00	\$4.75	\$16.00
Round trip	\$12.00	\$6.75	\$24.00
Île Bouliane ²	\$20.00	\$10.75	\$40.00

¹ The park entry fee is mandatory in addition to these fares.

² Notice to campers: round-trip rates for Île Bouliane may vary depending on equipment.

SHUTTLE TIME TABLE ¹

		10 a.m.	11 a.m.	Noon	1:00 p.m.	2:00 p.m.	3:00 p.m.	4:00 p.m.	5:00 p.m.
Péribonka									
Pointe-Chevrette		10:30 a.m.	11:30 a.m.	12:30 p.m.	1:30 p.m.	2:30 p.m.	3:30 p.m.	4:45 p.m.	5:30 p.m.
Île Bouliane ²	9:00 a.m.		11:45 a.m.					4:30 p.m.	

¹ Subject to weather conditions on Lac Saint-Jean.

² The hours may change. Contact the skipper (418.720.8215).

A

Auberge Île-du-Repos (nearby Sainte-Monique)

105, chemin de l'Île-du-Repos, Péribonka (Québec) G0W 2G0
Phone: 418 347-5649 | iledurepos@bellnet.ca | www.iledurepos.com



B

Aubergîte au Petit Bonheur

374, rue Plante, Péribonka (Québec) G0W 2G0
Phone: 418 374-2328 | aupetitbonheur@sympatico.ca



C

Camping et plage Belley

100, Chemin Belley, Saint-Henri-de-Taillon (Québec) G0W 2X0
Phone: 418 347-3612
nfo@campingbelley.com | campingbelley.com



D

Camping Pointe-Taillon

900, rang 6 Ouest, Sainte-Monique (Québec) G0W 2T0
Phone: 418 347-3124 | 1 877 347-3124
campingpointetaillon@outlook.com | campingpointetaillon.com



E

Hôtel Universel (centre-ville d'Alma)

1000, boul. des Cascades, Alma (Québec) G8B 3G4
Phone: 418 668-5261 | 1 800 263-5261
hotel@hoteluniversel.com | www.hoteluniversel.com



F

Notre Hôtel (centre ville d'Alma)

450, rue Sacré-Coeur, Alma (Québec) G8B 1L9
Phone: 418 668-3222 | 1 877 917-3222 hotel@notrehotel.ca | www.notrehotel.ca



G

Jardin Scullion

1985, rang 7 Ouest, L'Ascension-de-Notre-Seigneur (Québec) G0W 1Y0
Phone: 418 347-3377 | 1 800-SCULLION (1 800 728-5546)
info@jardinscullion.com | www.jardinscullion.com

H

Gîte Au bonheur du Voyageur

356, route 169, Saint-Henri-De-Taillon (Québec) G0W 2X0
Cell.: 418 669-1359 | Phone: 418 612-2030 | gite@aubonheurduvoyageur.ca
AubonheurDuVoyageur.ca



I

Auberge la Locanda du passant

400, rue Principale
Saint-Henri-de-Taillon (Québec) G0W 2X0
Tél : 581 230-1781 | shbergeron.sb@gmail.com



SEE THE LOCATION
ON THE MAP
On pages 4 and 5.