

# *The* **GLEANER**

THE LEADING ADVERTISING MEDIUM IN THE CHATEAUGUAY VALLEY

HUNTINGDON QUEBEC

JUNE 20, 1973

## **ANNUAL FARM SUPPLEMENT**



**An article on underground drainage in the area is featured in this issue**

*For details and photograph see page 12*

# Quebec a leader in production

"For the past few years, Quebec has acceded to the first rank amongst Canadian provinces producing milk; in 1972, Quebec's production was equivalent to 37% of the National production".

That is what Mr. Réal Piquette, of the Agricultural Products Marketing Service, from the Quebec Department of Agriculture, was telling us.

He also added that: "Amongst agricultural productions made in Quebec, the dairy production has always been the most important. Last year, that production brought an annual income of about \$300 millions to our growers which was the equivalent of 40% of their total income".

That same year, the 34,000 growers engaged in that speculation produced nearly 7 milliard pounds milk.

An interesting phenomenon has been observed over the last 5 or 6 years: the number of farms producing milk is decreasing substantially, while at the same time there is no decrease in the total production of the Province. That is due to an increase in the total production of the Province. That is due to an increase of cows per herd and also to an increase of the average yield of milk per cow.

There are about 75 dairies in the Province of Quebec which are buying the milk produced by 5,000 specialized fluid milk producers that are grouped in the Quebec Milk Producers Federation.

The main dairy products offered to consumers through these dairies are: homogenized milk (3.25% of fat), partially skim milk with a 2% fat content, skim milk (without any fat), creams which contain 35, 15 or 10% of fat, chocolate milk, ice cream, cottage cheese, sour cream, yogurts and puddings. As everybody knows, those last two products have been enjoying for the past few years an increasing popularity.

Besides those dairies, we also have in our Province about a hundred milk processing organizations

who are private or cooperative enterprises; they are processing the milk sent to them by 29,000 producers of industrial milk. The main products manufactured by these plants are: 1-Butter: with a total production of 138 million Pounds in 1972, our output represents 47% of the National production product.

2-Cheese: Quebec production of cheddar cheese has increased noticeably over the last few years; last year, our total volume for that item was of the order of 92 million pounds or 48% of the National production. Quebec also produces 22 million pounds of Speciality cheeses (Mozarella, Oka, Camembert, Parmesan, Gouda, etc.).

3-Concentrated milk products: in 1972, the National production of concentrated whole milk was of the order of 279 million pounds and Quebec was producing one third of that volume. As far as the production of concentrated skim milk is concerned, the volume in Quebec was 265 million pounds compared to a total production in Canada of 453 million pounds. It should be noted that 70% of the concentrates of skim milk is under the form of powder.

Mr. Piquette also mentioned that the utilization of Quebec's total milk production was distributed as follows: Butter-48%, Milk for fresh consumption-20%, Cheeses-19%, Other products-8%, Used on the farm-5%.

The consumption of fluid milk in Quebec is low, especially when we compare it to that of Ontario: In 1972, 72 quarts of Milk were consumed per capita in Quebec against 91 Quarts in our neighbour Province. We know that the average consumption in Canada is of 81 quarts per capita. In conclusion, the specialist of the Provincial Department of Agriculture said: "from these figures, it is easy to say that there is room for improvement concerning that point in our Province".

# Bats friends of man in battling insects

"In the face of growing public awareness of the environment, knowledgeable farmers and other citizens have been turning away from chemical control of insects wherever possible and seeking to encourage natural controls," comments Herb Doig, Director of Fish and Wildlife for the New York Department of Environmental Conservation. "One of our best natural allies in man's age-old struggle against insect numbers is the humble bat."

"Bats have been a subject of fascination and mystery for centuries. Their nocturnal habits and unique appearance may have caused this uneasiness, but a fear of bats is unfounded," he explained.

With the advent of spring, people are more apt to notice bats, only recently emerged from hibernation. Bats are among the most ubiquitous, or widely distributed, mammals in this region and there are representatives of most of the 10 native species.

Bats are also of interest in their role of carriers of zoonotic diseases. A zoonotic disease is one which is transmissible from animals to man, the most frightening of which is rabies.

Wildlife researchers from the New York State Department rabies control program are studying bats to fully understand the role bats play in the transmission of this disease. When a rabid bat goes into hibernation he may not die during this period but become a great threat to his cave mates. Bat rabies virus is such that it has been transmitted through the air with no bite or other contact.

Two men have contacted rabies through aerosol infection while in a Texas cave containing a large bat population. This occurred under unique conditions, however, not likely to be encountered here. Transmission of rabies most commonly occurs through biting.

Because bats usually avoid man, human contact is usually limited to sick bats.

Bats seen during the day clinging to the sides of buildings or struggling on the ground may be sick and should be avoided. Should a person be bitten by a bat, the wound should be thoroughly washed with soap and water and medical attention sought immediately.

The animal should be cap-

tured and submitted to the nearest office of the Department of Health where they can have the animal tested for rabies. A jar or a shoe box with a top are good containers in which to capture and submit bats. Capture of a sick bat is simple if the container top can be used to knock the bat off its roost and into the container.

## CATTLE



# NEWS

Try our cattle Cattle Feed in your feeding program !

You'll see the results in the growth, gains and profit potential of your herd. Our feeds are scientifically formulated, and fortified with essential nutrients to put on more pounds, fast.

See for yourself.

**Romain Ménard ET FILS**  
**GRIST MILL**

TEL: 264-5450

HUNTINGDON

**COOPERATIVE AGRICOLE**

**DE GRANBY**

**CREMERIE**

**REVELATION**

**INC.**

**HUNTINGDON**

FOR ALL YOUR

# Farming Needs

SEE US FIRST

## WE HANDLE EVERYTHING

FROM SCREW DRIVERS TO GRASS SEED

SPRING IS PAINT UP TIME

AND

BUY YOUR PAINT HERE

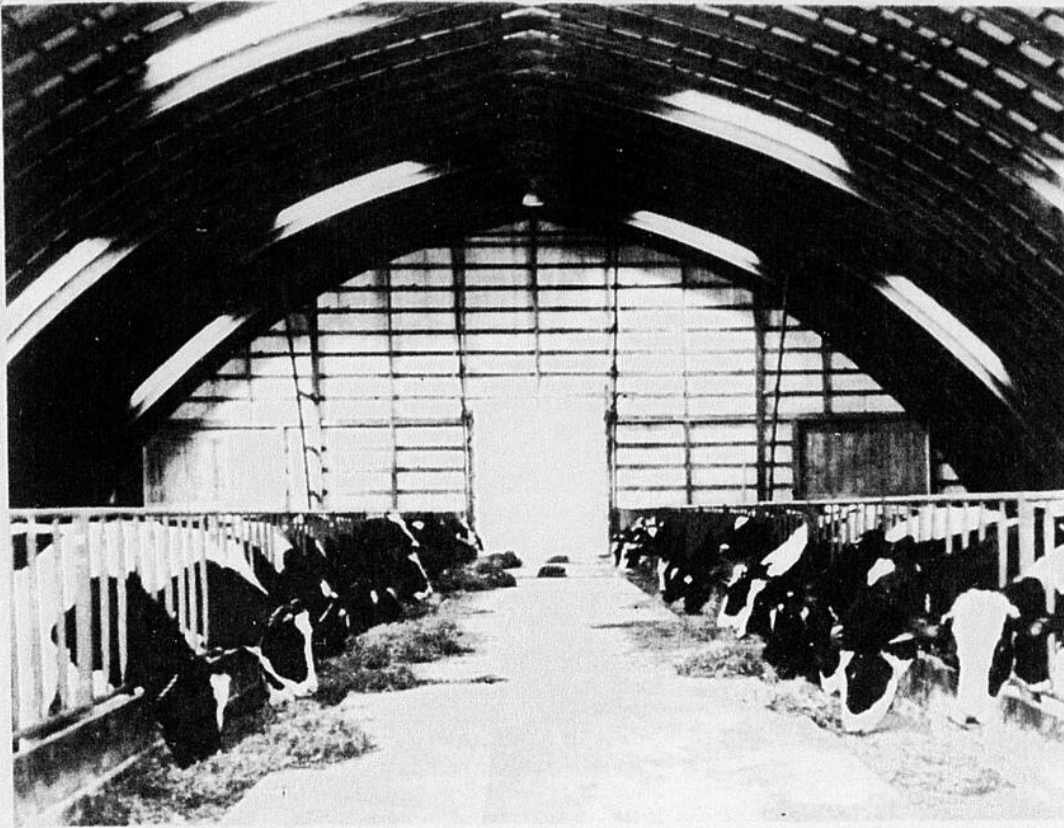
# \$\$\$ SAVE \$\$\$

## Rolfe Hardware

96 CHATEAUGUAY

HUNTINGDON

264-5485



This modern free-stall dairy barn has a center drive-through aisle that simplifies feeding. Wagons unload rations into troughs as they progress down the aisle.

## Granby Co-op expands, firm's future bright

"Things are moving in the right direction in your cooperative." This is the way Mr. Philippe Pariseault, managing director of the Granby Co-op, summed up the enterprise's position when he was addressing members who met recently for the annual general meeting.

"What is important," said the managing director "is that the Co-op continue to contribute to the economic expansion of Quebec and to a better life for its farmer members." Membership increased by 560 last year, following mergers and acquisitions of other firms.

Assets of the shareholders of the co-operative (35 years in existence) have gone from \$12,827,150 in 1971 to \$15,424,180 last year. Operating on this firm basis the cooperative stands to continue expansion.

### Surplus

The operations surplus for the last year was up to \$1,200,446 not counting additional remittances made to the members. The dividends paid were of the order of \$1 million. It is estimated that, since 1956, members have received, in dividends and additional remittances a sum of more than \$37,000,000.

Total 1972 sales at \$124,000,000 (of which \$9,000,000 for the "Laiteries Leclerc" for 10 months' operation) give an idea of the considerable progress made by the co-operative. Indeed business indicated an increase of 51.2% over the preceding year.

For 1973, Mr. Pariseault expects that sales will reach the \$155,000,000 mark and that the

assets will amount to \$50,000,000.

Reception and transformation of milk at the co-op reached a record 1,768,000,000 pounds, an increase of 41.1% over 1971 in spite of bad weather which affected milk production in many regions.

### Cheese Factory

The year 1972 saw the opening of a cheese factory by the co-op at Bon-Conseil. Installed at a cost of \$3,600,000, this cheese factory will be in full operation by next April and will transform 1,600,000 lbs. of milk per day.

Statutory grants from the governments for installation of this cheese factory were of the order of \$1 million. We must note that, since January 1973, the former cheese factory at Bon-Conseil has been shut down.

### Yogourt

Mr. Pariseault reported that the production of yogurt under the brand name of "Yoplait" is developing normally and that this product is gaining in popularity with the public. The second production phase consists in installing equipment to package in 4-oz. containers.

Furthermore, the co-op will soon add the production of "yopi" desserts which will enable it to conquer the institutional market and the Ontario and Maritimes market.

### A Subsidiary

"Crèmerie Révélation", located at 58 York Street, Huntingdon, became a subsidiary of the Granby Co-op in December 1969.

Since that time, more than 300

farmers from the area have become members of the co-operative. These milk producers have provided to the Co-op approximately 70,000,000 lbs. of milk annually for industrial transformation.

The Huntingdon plant specializes in the production of butter and skimmed condensed milk. The latter is then shipped to other Co-op plants to be made into powdered milk.

The Board of Directors of the Co-operative is made up of 15 milk producers from different regions of the Province of Quebec.

Our area is represented by André Wart of St. Anicet.

### Homage Paid

The managing director of the Co-op, Mr. Philippe Pariseault, paid homage to Mr. Roland Sabourin for his great service to the firm for over a quarter of a century. Mr. Sabourin retired recently.

According to Mr. Pariseault, Mr. Sabourin is probably the one who has done the most to build the firm under its co-operative structure and given it the spirit of co-operation.

### Best Cheese

It is no small honor to receive the world championship for natural cheese as the Granby Co-op did while competing at the international level with 15 other countries.

The managing director, Mr. Pariseault, gave homage to the producers for this honor. He noted that the Co-op had won many other trophies for the British Empire as well as for Canada and Quebec.

The president of the Granby Co-op has declared that he doesn't glorify over the millions the firm has netted (it is known that the Co-op did for \$124 million business in 1972).

"It is not the millions that matter", said Mr. Martin "but

the services that the co-operative renders to the farmers and the fact that the enterprise is theirs

"The milk industry is the farmers' business", said the president, "and they have proven that they were able to look after it well. On the other hand, the Co-op has attained collectively what none of the farmers could have achieved individually."

## Canadian Dairy Commission Act

The Canadian Dairy Commission was established by the Canadian Dairy Commission Act in 1966 and became operative on April 1, 1967. The affairs of the Commission are directed by three commissioners, and its objects are "to provide efficient producers of milk and cream with the opportunity of obtaining a fair return for their labour and investment and to provide consumers of dairy products with a continuous and adequate supply of dairy products of high quality".



**HUILE A CHAUFFAGE ENRG.**

**ST-ANICET, QUE.**

**(CTE HUNTINGDON)**

**Tél. 264-2784**

## FARM ACCESSORIES

Barbed wire - Page wire fencing

Stelco anchor wire

Farm gates

Products for Dairy

Filter Pads

Inflation kits

Milk-testing acid

Atrazine and Aatrex Herbicides

Food and items for Cats and Dogs

Products for Horses

Jamesway and Jutras equipment

Milk pails, dairy washtanks,  
shovels, forks, stable brooms

**COMPLETE ASSORTMENT OF FEEDS**

Brewery grains delivered in bulk  
for summer feeding

**D & M HOOKER LTD.**

Ormstown

Tel: 829-2255



**JOHN DEERE DEALER**

FARM MACHINERY

RECREATIONAL EQUIPMENT

PARTS & SERVICE

LES EQUIPMENTS

**M. DUMOUCHEL**

ST-STANISLAS-DE-KOSTKA TEL: 373-0411

# Collective animal medicine now trend

BY JEAN-PIERRE ASSELIN  
VETERINARIAN  
QUEBEC DEPARTMENT  
OF AGRICULTURE

You will probably agree that it would be most helpful and profitable if I could give you some magic panacea for preventing disease among cattle, somewhat after the fashion of a set of maintenance instructions for a car or a snowmobile. But the problem of animal disease is more complicated than that and, if we are to keep our cattle in good health, we must take into account several factors such as the age, feeding and environment of the animal and the type of production it is kept for.

Because of the rapid development of cattle raising in Quebec as elsewhere, during recent years, the farmer has come to realize that animal disease often costs dearly. If he dispassionately calculates the losses caused by disease, it will become obvious to him that what is really costly is not the treatment but the loss of production during sickness and convalescence and sometimes the loss of the animal.

That is why the standpoint of veterinary medicine is also changing and developing. Without thereby abandoning therapeutic or curative veterinary medicine, we are tending increasingly towards a collective or herd veterinary medicine. There is a growing interest in those factors we recently talked about in order to determine their effect on the health of cattle and so be about in order to determine their effect on the health of cattle and so be able to prevent disease from breaking out in a herd.

#### WHY PREVENTIVE?

Preventive veterinary medicine has two aims: 1. to eliminate disease from a herd or reduce it to a minimum; and 2. to prevent disease from ever appearing in a herd.

When we speak of disease thus, it must always be borne in mind that we mean not

only diseases of an infectious nature like those caused by bacteria, viruses, parasites, etc., but also non-infectious disorders which always involve disturbance of the animal organism's normal functions, such as the troubles associated with calving, milk fever, acetonomia, infertility of non-infectious origin, indigestion in all its forms, diseases that are so often of alimentary or nutritional origin.

In this connection it is of interest to mention, "en passant", that according to the reports of the veterinary practitioners in the contributory animal health insurance plan, 49% of calls on their services by Quebec farmers were due to diseases of an infectious nature and 51% were for help in treating non-infectious disorders (in which germs were not involved). Hence, in talking about a program of preventive veterinary medicine we have to think about or include all factors, besides micro-organisms which can affect the health of animals.

In launching a preventive veterinary medical program, we must take into consideration and understand, as far as our present knowledge permits, the entire set of factors that contribute to the well-being of the animal and likewise the entire set of factors that can disturb its functioning and behaviour, limit its production, and often reduce its resistance to disease.

Among these factors that must be taken into account are the following: 1. **Pathogenic micro-organisms:** These cannot be completely eliminated but, as we have to live with them, we have to make sure that the chances are on our side by making the animal's environment as healthy as possible. This implies attention to such factors as water, air, soil and buildings which call for constant cleanliness including disinfection;

2 - **The animal's comfort:** Cattle raising is characterized nowadays by the concentration of livestock in more or less limited areas, under increasingly artificial conditions. It is therefore essential that the buildings be adequate, that the feed contain the constituents that are essential or helpful to the animal's health and productivity.



Self-propelled forage harvesters produce uniformly fine-cut forage that's ready for immediate feeding or silo storage. This model, equipped with a pick-up head, is at work in a hay field.

3 - **Inheritance:** As we know that certain breeding lines of livestock are more disease-resistant than others, we must select our animals bearing in mind their innate resistance to disease as well as their animal husbandry qualities. Furthermore, we must beware of possible undesirable consequences of consanguinity resulting from

artificial insemination if bulls are not wisely chosen, since in the long run this may lead to more abnormal calves, decreased fertility, and increased mortality in the early post-natal period.

#### Program necessary?

As you are the persons immediately concerned, it is up to you to answer this

(continued on page 13)

**JOHN DEERE LTD. TRACTORS**



*in all sizes*  
ALSO


**FARM EQUIPMENT**

**SALES & SERVICE**

**J. MELVILLE BROWN & SON**

Howick Quebec Tel. 825-2093

**KEDDY & HADLEY INSURANCE INC.**





**A Complete Insurance SERVICE**

● FIRE	● AUTOMOBILE
● MARINE	● LIABILITY
● SPECIAL RISKS	● LIFE

**GLEN K. HADLEY A.I.B.**  
**LESLIE KEDDY A.I.B.**

247-2707  
TEL. 247-2424

HEMMINGFORD

**IDEAL FERTILIZERS LTD.**

WISHES TO THANK

THE

**FARMING COMMUNITY**

FOR THEIR

**CONTINUOUS SUPPORT**

J.G. CHARBONNEAU  
General Manager  
St. Remi

Tel: 692-4853 - 454-3971

# DUNLOP SAVINGS



ON  
**TRACTOR TIRES**  
**FARM IMPLEMENT TIRES**  
**TRUCK TIRES** ALL SIZES AVAILABLE

**AT OUR USUAL LOW PRICES**



**LAROCQUE RD.  
 VALLEYFIELD**



**DUNLOP**  
 CUSHION RIDE  
 NYLON-TUBELESS  
 4 PLY RATING

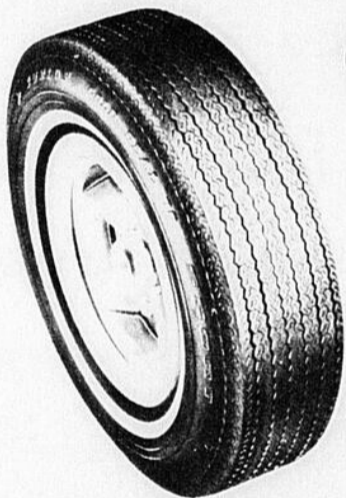
**10<sup>95</sup>**

775x15  
 BLACK WALL  
 INSTALLED



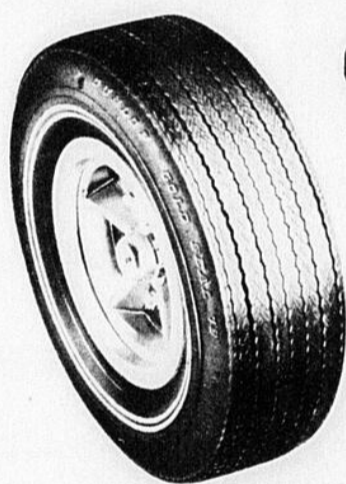
**DUNLOP**  
 GOLD SEAL  
 4 PLY NYLON, WHITEWALL  
 TUBELESS

**18<sup>95</sup>** INSTALLED  
 F 78 - 14  
 G 78 - 14



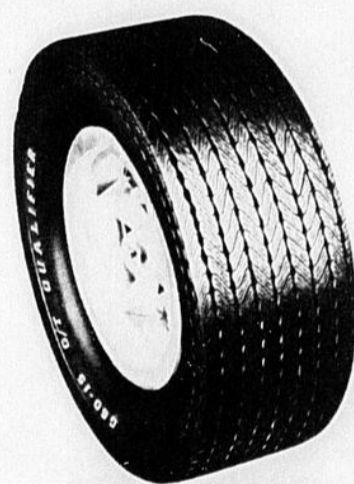
**DUNLOP**  
 GOLD SEAL '78 SPORT  
 WHITEWALL, TUBELESS  
 4 PLY NYLON

**21<sup>95</sup>** G 78 - 14 - 15  
 F 78 - 14 - 15  
 INSTALLED



**DUNLOP**  
 GOLD SEAL '78  
 TWIN BELT  
 1WW OR 2 WW

**24<sup>95</sup>** TUBELESS  
 INSTALLED



**DUNLOP**  
 GT QUALIFIER  
 WHITE LETTERING  
 BELTED G 60 - 15 • G - 60 - 14  
 OR MORE

**2** TIRES  
 TUBELESS  
 INSTALLED  
 SINGLE TIRE 37.95 **34<sup>95</sup>** Ea.

**PIRELLI STEEL AND DUNLOP RADIAL TIRES**

**VALLEYFIELD AUTO SUPPLIES LTD.**

CLINTON HICKEY, PROP.  
 305 Ch. LAROCQUE

VALLEYFIELD

TEL: 373-3740

**C. & S. AUTO  
 PARTS REG'D**

SARGENT HICKEY, PROP.  
 2 BOUCHETTE HUNTINGDON  
 TEL: 264-3033

## New tax measure of interest to farmers

The Minister of Finance M. Raymond Garneau announced several new tax measures in his budget speech delivered before the National Assembly, March 29, 1973.

These measures have a twofold objective: to alleviate the taxpayers' burden, especially for those with low income, and to stimulate the economy.

For the benefit of our readers, here are a few excerpts from M. Garneau's speech:

Retroactive to January 1, 1973, the exemption of \$2,000 for single persons and \$4,000 for married persons has been increased to \$2,500 and \$5,000 respectively. This measure will exempt an additional 125,000 persons from income tax. By so increasing the available personal income of the individuals concerned and thus widening the gap between that income and social benefits, this measure will be an incentive for more people to seek employment. The higher exemption will benefit low income persons in two other ways:

Persons who will benefit from this measure will no longer have to contribute to the health insurance plan.

Secondly, the Québec government will reimburse to the Québec Pension Plan half of the contributions of self-employed workers, particularly tradesmen and farmers, who earn less than these limits of \$2,500 and \$5,000.

As of January 1, 1973, capital gains deemed to be realized by a farmer who, at death, leaves his farm to his children so that they may in turn work it themselves, will be exempt from income tax.

Retroactive to January 1, 1973, the gift tax act will be amended in order to increase from \$25,000 to \$75,000 the special exemption allowed, once in his lifetime, to a farmer who donates his land to one or more of his children for farming purposes.



## Farm numbers decline

Although agricultural production has continued to climb, both the number of farms and the farm labour force have declined over the past decade, affected by increased farm mechanization and marketing trends. The number of Canadian farms dropped

from 481,000 at the date of the 1961 Census to 431,000 in 1966; by 1980 it is expected that there will be only about 315,000 farms in Canada.

In 1970, the total employment in Canadian agriculture, including family and hired help, was 511,000, 6.5% of the total

employed labour force in Canada; this was down 24,000 from 1969 and was 170,000 fewer than in 1961.

Those declines, it should be noted, are mitigated by the fact that today one farmer feeds an estimated 40 people from his farming efforts; his grandfather fed about five at the beginning of the century.

### THE MUTUAL FIRE INSURANCE Company

of the  
COUNTY OF BEAUHARNOIS

SERVING FARMERS

SINCE 1852  
EXCLUSIVE AGENTS

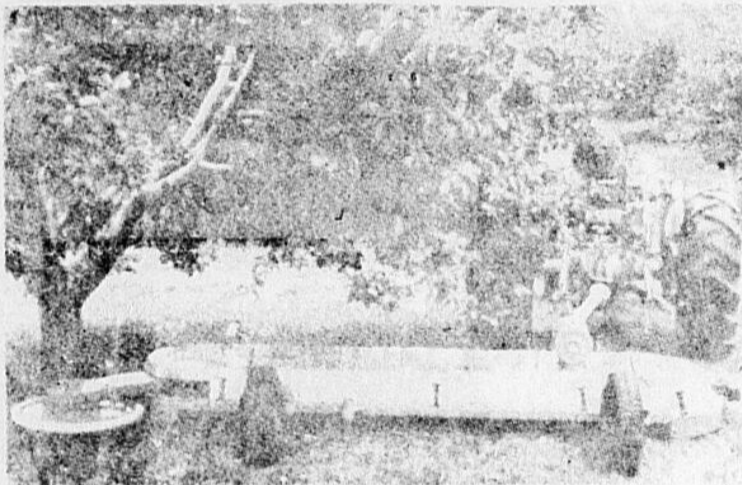
## Bourgon, Cluff, Latreille Inc.

158 CHATEAUGUAY ST.

TEL. 264-2944  
264-3344

HUNTINGDON

DEAL WITH EXPERIENCE



### FEATURES

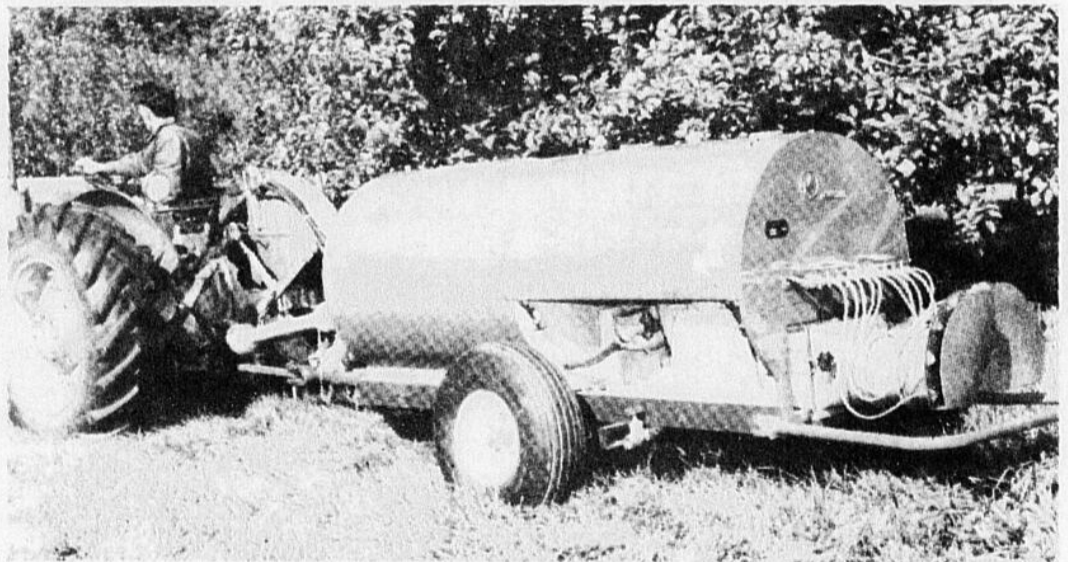
#### SWINGING ARM:

The swinging arm of the perfect Super is actuated by a freely rotating wheel equipped with puncture proof rubber tube. When the rubber tube touches the tree the wheel rotates and pushed the swinging arm (with cutting blade) away from the tree.

The mowers have a flat bottom. This feature combined with its slender streamlined shape and correctly chosen R.P.M. ensures that horsepower requirements have been reduced to a minimum.

#### POWER REQUIREMENTS:

- Sturdy construction
- Excellent spreading or windrowing of the grass
- Flat, low and streamlined construction
- Large offset (stepless adjustment)
- Double cutting edges
- Low power requirements



SOUTHERN QUEBEC DEALER

## Beattie & Son Inc.

TEL. 247-2720 OR MTL. 868-2226

HEMMINGFORD

# BARTLETT

EASTERN CANADA  
DISTRIBUTOR

For Information or demonstration contact

ONTARIO - N.M. BARTLETT MFG. CO. LTD. - Box 490, Beamsville, Ont. (416) 563-8261

QUEBEC - GERRY BEAUDIN - Franklin Centre, Quebec (514) 827-2540

Dealers In All Fruit Growing Areas - Contact Bartlett For The Name Of The Dealer Near You

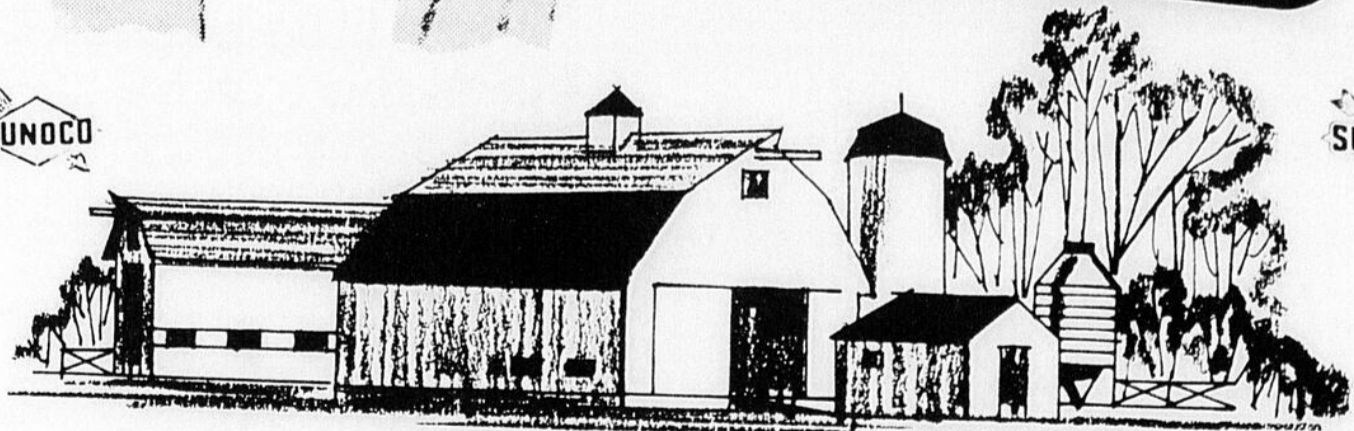
# YOU CAN DEPEND ON US

FOR YOUR SUPPLY OF GAS AND DIESEL AS WE HAVE OUR OWN PLANT AND ALWAYS A SUPPLY ON HAND AT ALL TIMES



**SUNOCO**

- ✓ GAS
- ✓ DIESEL
- ✓ MOTOR OILS
- ✓ LUBRICANTS
- ✓ SAME DAY SERVICE
- ✓ TANKS SUPPLIED FREE OF CHARGE



### PLEASE NOTE

WE USE ONE TRUCK FOR GAS ONLY. WE USE ANOTHER TRUCK FOR DIESEL FUEL ONLY. THERE IS NEVER ANY DANGER OF GAS AND DIESEL BEING MIXED

## E. RENNIE & SON REG'D.

BILL RENNIE Mgr.

TEL: 829-2888

ROUTE 14

ORMSTOWN

# The value of a young sire proving program

The following was taken from the Eastern Breeders Incorporated Newsletter.

For years, breeders, A.I. Unit personnel and agricultural personnel have been preaching the wonders of using proven sires and especially plus proven sires. Then why all of a sudden do we put so much emphasis on a young sire proving program. It appears at first to be conflicting ideas. But both are working to meet the needs of the breeders-proven sires.

Every bull, no matter how great, has a definite life span, or every bull has to die sometime. Thanks to the wonders of frozen semen, they can extend their effect for a prolonged period of time. But that, again is a definite period. What does a breeder, who has used a highly proven bull for years, do when this bull dies or no more semen is available?

This is the whole point of a young sire proving program. When properly used, it provides breeders with a continual source of proven bulls. Only the breeders can make a success or failure of a young sire proving program. If breeders are willing to breed a portion of their herd to young sires, they will assure themselves of a group of proven bulls in years to come. If breeders are not willing to use young sires, they will have to suffer when the proven bulls are gone. The main idea behind any young sire program is to provide a continual source of proven sires in the years ahead.

How should a breeder treat a young sire proving program: To illustrate the mechanics of an ideal young sire proving program combined with the best use of proven sires, let us take the following example. A breeder has a herd of 20 cows and 12 heifers, all to be bred in

the next year. The herd average is 120 BCA for milk and the dams of the heifers have BCA's that average 125. 75 percent of the cows are bred to proven sires. 25 percent or 5 cows are bred to young sires. Likewise for the heifers, 75 percent are bred to proven sires and 25 per cent or 4 are bred to young sires. Therefore this breeder breeds seventy-five per cent to proven sires.

This percentage will take most of the gamble out of breeding if he has thought about the bulls and cows. 25 percent of the herd are bred to young sires, not a large percentage but enough to give a breeder an idea of their offspring. But most important it will ensure a constant supply of proven sires in years to come, when combined with similar efforts of other breeders.

But perhaps the biggest problem associated with a young sire proving program is the type of cows that young sires are bred to. With discounts given to breeders using test bulls, too many breeders use these sires on cows that are below herd average, cows that are going to be sold for dairy purposes, export or beef, or in some cases simply to get the cow in calf. In general, too many breeders use test sires on cows that are on the lower end of the scale for both production and type. Do you realize that to make average cows out of below average dams, the bull would be a breed improver. Yet when compared to herd and breed averages, these bulls would fall below average due to the below average dams.

Well how does a breeder give a young test sire a half-decent chance to prove himself. Let us refer back to our example. The herd average for the cows was 120. Five cows were being bred

to young sires. To give the young bull a chance or more properly to assess his true value, he should be bred to five cows that average 120, or bred to a cow above herd average, a cow below herd average and three cows that are at herd average. The same will hold true with the four heifers in comparison to their dams production. In this example, I have dealt only with production, the same philosophy will hold true for type. By using a program similar to this, a breeder will be breeding most of his herd to proven sires, but on the percentage being bred to young sires, he is doing so on a cross-section of his herd for type and production.

Is this too large a price to pay for tomorrow's proven sires? Invest in the future breed a percentage of your herd to test sires.

By Sire Analyst Eric Campbell

Canada is the world's fourth largest exporter of agricultural products.

The farm machinery and feed processing industries particularly are directly influenced by farm prosperity but many jobs in petroleum, rubber, automotive, hardware, paint, chemical and electrical plants also depend on farm customers.

An hour of farm labor today produces seven times as much food and other crops as it did 50 years ago, according to the U.S. Department of Agriculture.

While average industrial wages were going up every year from 1952 to 1972 for a total increase of 140 per cent, food prices were rising 47 per cent.

## J. C. Prud'homme INC.

LUMBER and BUILDING MATERIALS

J. C. Prud'homme, Pres.

- PLYWOOD
- INSULATION
- SHINGLES
- WALL BOARD
- DOORS
- HARDWARE
- PINE and SPRUCE
- CEMENT



**FREE DELIVERY**

277 ST. JOSEPH

STE. MARTINE

TEL. 427-2100



### Looking for a lot of tractor at a little price? Make yours an MF 135.

Any way you measure it, the MF 135 is a whale of a lot of tractor for your money. You get the fuel-saving 152 cu. in. Perkins diesel. Or the same size penny-pinching high torque Perkins gas.

And 8-speed transmission.

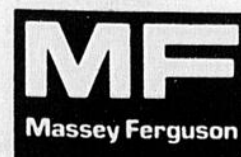
And Advanced Ferguson System hydraulics.

Try the MF 135. Stop by today. See why we say it's the world's biggest selling tractor. And while you're here, let's talk financing. We've got the right plan for you. You can count on it.

**DAWN FARM EQUIPMENT**

**DON LANG, PROP.**

TEL. 829-2762 R.R. 2, HOWICK, P.Q.



## FEEDS OF ALL KINDS

CUSTOM GRINDING AND MIXING

C.I.L. FERTILIZERS

WE CARRY

Registered Certified  
SEED GRAIN, CORN SEED,  
GRASS SEED

●  
ATRAZINE 80W

●  
PURINA and CANADA PACKERS  
SHUR-GAIN

●  
GALVANIZED and ALUMINUM  
ROOFING

**WE DELIVER**

**ANTHONY VAN WINDEN**

TEL. 264-5970

STE. AGNES DE DUNDEE

## Controlling flies in dairy barns

The unseasonably warm weather starting in March may result in more severe house fly problems than usual.

House fly problems originate from flies that winter in the south and from a small number of flies that breed through the winter in warm barns in the area. These flies spread over the area and increase as soon as warm weather arrives. Obviously both of these sources are intensified by early warm weather.

Also, insects pass their life cycles more rapidly at higher temperatures, increasing the number of generations in warm seasons. It is the succession of generations of this insect, with its high breeding potential, that produces severe situations. In 1973 it will be more difficult to control flies because they have built up their resistance markedly in the past year.

### HOUSE AND STABLE FLIES

Flies in the barn and flies on pasture constitute the two main insect problems for dairy cattle management. The most important pest is the ordinary house fly, but sometimes the stable fly may be severe. The stable fly is a bad pest because it bites viciously and painfully, and sucks blood from the cattle.

Control in the barn, however, is essentially the same as for the house fly.

Where are the most important breeding sources for the house

fly in and around our barns? First and foremost the main culprit is manure with added bedding, particularly the pack (continued on page 11)



Remember when the binder attachment to the reaper first came into use? It saved many man hours previously required to bind the cut grain in preparation for threshing.

## Pine sawfly danger cited

The European pine sawfly, a forest insect that attacks many pine species, is expected to have great impact this year.

Affected pine species include red, Scotch, Mugho, jack, Japanese red and Swiss mountain. Owners of these types of trees, whether ornamental plantings or forest plantations, should examine them at once for the presence of the European pine sawfly. It is now in the newly hatched larval or worm stage, and will grow to about one inch in length.

The insect may be identified in the worm stage by its shiny black head and dark green body. The sawfly feeds in colonies on old pine needles, not the new growth. They appear to be a seething mass of wiggly worms.

The worms feed about four to six weeks, depending on the weather. When they have fed on a tree, it has the appearance of having had a haircut. Single or repeated defoliation seldom kills a tree but it does weaken the tree, making it more vulnerable to other disease and insect attack.

Natural controls of the European pine sawfly such as disease, climate, insect parasites, predators, birds and

rodents all play important roles in reducing or preventing outbreaks. At times, however, these natural regulators fail and one must resort to insecticides. Control can be readily accomplished by spraying the colonies of worms with an insecticide applied with a garden sprayer. Short-lived, nonpersistent pesticides such as Sevin or Malathion, are highly effective. These materials are available at farm and garden stores without permit.

**DEALER FOR**

**CO-OP BALANCED FEEDS**

**SEED GRAIN**

**SEED CORN**

**CO-OP • FUNK'S • P.A.G.**

**PRIDE • STEWART'S**

---

**COMPLETE LINE OF**

**HERBICIDES**

---


**CO-OP MOTOR OIL**

**HARDWARE**

**DIAMOND PLASTIC DRAINS**

**GILLES VALLEE INC.**

Ste. Barbe Tel: 373-4625



# JEAN-LOUIS TREPANIER

COURTIER D'ASSURANCE AGREE

66 rue Chateauguay Tél. 264-5345  
Huntingdon Res. 264-5477

SPECIALIZING  
in  
COMPREHENSIVE PACKAGE

## FARM INSURANCE



# Firestone

# FARM TIRES

GET THE BEST QUALITY

AT THE

## LOWEST PRICES

## HUNTINGDON AUTO PARTS

TEL. 264-2666
HUNTINGDON
RIDGE RD.

## Ice cream new market

by Isidore Martin

The creation of QUEBEC LAIT INC. represents not only a historic moment and an important step for Granby Co-op but also a new orientation foreseen in the 5-year plan put forward in 1968.

Philippe Pariseault, managing director of the enterprise, explained at the recent general meeting that the tendency to contract in the industrial milk business has caused the co-operative to take a new direction, that of raw milk and ice cream and that the evolution appears promising.

### DIVERSIFY

In view of the expansion of cities (and therefore the expansion of new markets) and considering the letting go of part of dairy farms, said Mr. Pariseault, we must have the courage to adapt our enterprise to new needs that appear. The dairy industry must, not only work at reducing production costs, but also at diversifying its production, which is what the Granby Co-op is endeavoring to do.

The time was ripe to grasp the raw milk and ice-cream market which offers possibilities for the future and the Granby Co-op has met the challenge by creating Quebec-Lait Inc.

### QUEBEC-LAIT INC.

When approving its 5-year development plan in 1968, the co-operative had foreseen the new orientation it has now taken. As early as 1969, the Quebec - Lait Inc. corporation was registered.

About two years ago, the Department of Agriculture of the province of Quebec was looking at the future of the dairy industry. A policy of plant consolidation was adopted and a committee set up to study the future situation.

The Granby Co-op participated actively to this study whose report was brought down in July 1972. The Co-op, which, at the end of 1971, had already bought "Les Laiteries Leclerc Inc.", was considered as the tool best able to effect, in a short time, a large-dimension regrouping of the dairy factories.

This was done quite rapidly, as it fitted very well with the objectives the cooperative had set for itself.

Recently therefore, the Granby Co-op and the minister of Agriculture, Normand Toupin, were in a position to announce the creation of Quebec - Lait Inc., bringing together Les Laiteries Leclerc Inc., Grenache Inc., A. Poupard & Cie Ltée and, since February 26, Les Laiteries Mont-Royal. The provincial government has participated in this venture with a grant of \$1,500,000.

Members of the Co-op, through the Laiteries Leclerc Inc., presently hold 55% of the shares of Quebec - Lait Inc. By 1979, they will have acquired the totality of the shares and Quebec - Lait Inc. will become entirely owned by the Co-op, of which it will be a subsidiary. The possibility is not set aside however that, by 1979, Quebec - Lait - Inc. will have known an even greater expansion by the purchase of or re-grouping with other companies.

A new orientation for the Granby Co-op, the creation of Quebec - Lait Inc. also has the merit of allowing a Quebec enterprise to enter into the important market of raw milk and ice-cream. "If we hadn't acted," said Mr. Pariseault, "there is no doubt that others would have taken over the factories and the market."

Translation of Extract from: "Ensemble", April 20, '73.

# GOOD YEAR

## THE BEST POPULAR PRICE TIRE

**TRACTION  
TORQUE  
3-T PERMA CORD  
NYLON  
EXCLUSIVE  
DESIGN  
ANGLED LUGS  
LONGER, DEEPER  
and WIDER  
LUGS  
THAN ORIGINAL  
EQUIPMENT TIRES**



**GOODYEAR'S FAMOUS 4-YEAR  
DOUBLE GUARANTEE**

**1.**

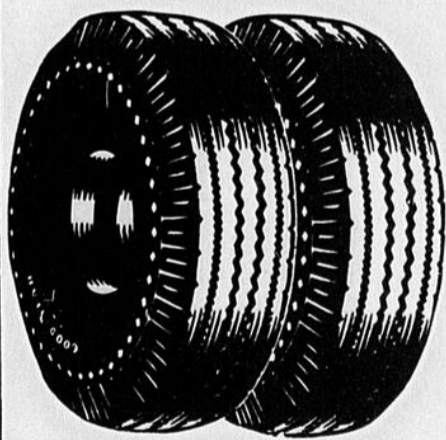
Guaranteed against defects in workmanship and materials.

**2.**

Guaranteed against "impact" and "buckle" breaks.

**Rugged Quality at a Low Price**

**GOOD YEAR  
TRACTION HI-MILER**



For normal road and highway use Tough 5-rib tread design gives long, even wear, good traction. 3-T nylon cord body for strength.

**LIFETIME TIRE  
GUARANTEE**

**PROVEN PERFORMANCE**

at an

**ECONOMY PRICE**

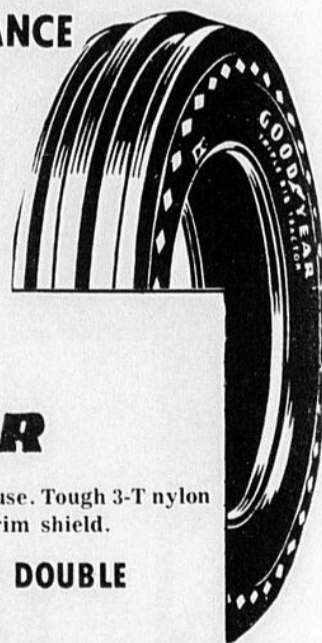
**NYLON  
TRIPLE RIB**

by

**GOOD YEAR**

An all-round favorite for general use. Tough 3-T nylon cord, famous 3-rib design with rim shield.

**GOODYEAR'S 4-YEAR DOUBLE  
GUARANTEE**



# GOOD YEAR GO CENTRES

A DIVISION OF THE GOODYEAR TIRE & RUBBER COMPANY OF CANADA (LIMITED)

**384 CHEMIN LAROCQUE VALLEYFIELD**

**TEL. 373-9273**

**NO CASH NEEDED**

**USE THE GOODYEAR CREDIT PLAN OR "CHARGEX"**

**OPEN**

**Mon. - Tues. - Wed. - 8:30 a.m. to 6 p.m.  
Thurs. - Fri. 8:30 a.m. to 9 p.m. Saturday till noon**

## Controlling flies

(continued from page 9)

under animals housed inside the barn during warmer weather. Calf pens are the worst, especially where manure accumulates and straw or other bedding is added. Flies breed and increase very rapidly under these conditions and present an almost insurmountable fly control problem.

Next in importance are poorly built or managed free stalls where manure is dropped in the stall and is not removed promptly. Manure left in the gutters, or allowed to accumulate anywhere in or immediately around the barn, will inevitably provide an excellent place for flies to breed. Stacked manure, particularly several weeks old, is unlikely to breed many house flies. The relatively soupy pure manure that is pushed around by the blade in loose housing structures is not a severe source.

In wet weather all care must be taken not to allow grain or

feeds to become moist and ferment. Huge numbers of flies, particularly the stable fly, will breed indoors or outdoors in fermenting vegetable matter of almost any kind. The fermented material around a trench silo especially during a warm wet spell in the fall can produce a plague of stable flies.

### ELIMINATE SOURCES

A good control program places emphasis on preventing breeding by eliminating these sources. If calves must be kept in a barn, a complete cleaning of manure must be done at least once, and preferably twice, a week. All gutters should be cleaned very thoroughly every day and the manure spread on the land.

The same is true for the general manure scraped out of loose housing structures. If spreading is not done very frequently, it is a useless procedure for fly control as large maggots will continue to

develop in the chunks and produce flies in fields. Later, they will fly back to the barns, as flies are attracted by the fine odors from dairy barns. It is important to construct free stalls so that cattle will drop their manure outside the stall area. Any manure dropped in free stalls should be picked up and disposed of at least daily. Keep free stalls dry and clean.

### USING FLY BAITS

Fly baits are an excellent adjunct to a good sanitation program. There are many on the market and they include a number of different insecticides but most of them give good performance providing enough is used. Fly baits must be used liberally. A small amount used infrequently is rather useless even though you may see quite a few dead flies in the immediate vicinity of the bait dish. A suggestion is at least four tablespoons of bait per 1,000 square feet of floor area.

All operators should be careful in placing the baits so that feed, water, milk or milking utensils are not contaminated. Don't

place it above can racks or on or above bulk tanks. It is more advisable to use bait strips, such as No-Pest-Strips, in the milk house. These contain Vapona and one strip should be used per 1,000 cubic feet of area. As long as air movement is not excessive and the milk house is screened, these should do the

Farm Supplement - Page 11  
job. They will need to be replaced every month or two.

The individual farmer, as both a primary producer and a user of the end products of agriculture, plays an integral role in Canada's economic future.

THE  
**CHATEAU**  
HUNTINGDON



# FARM EQUIPMENT and TRACTORS

WE HAVE THE COMPLETE LINE

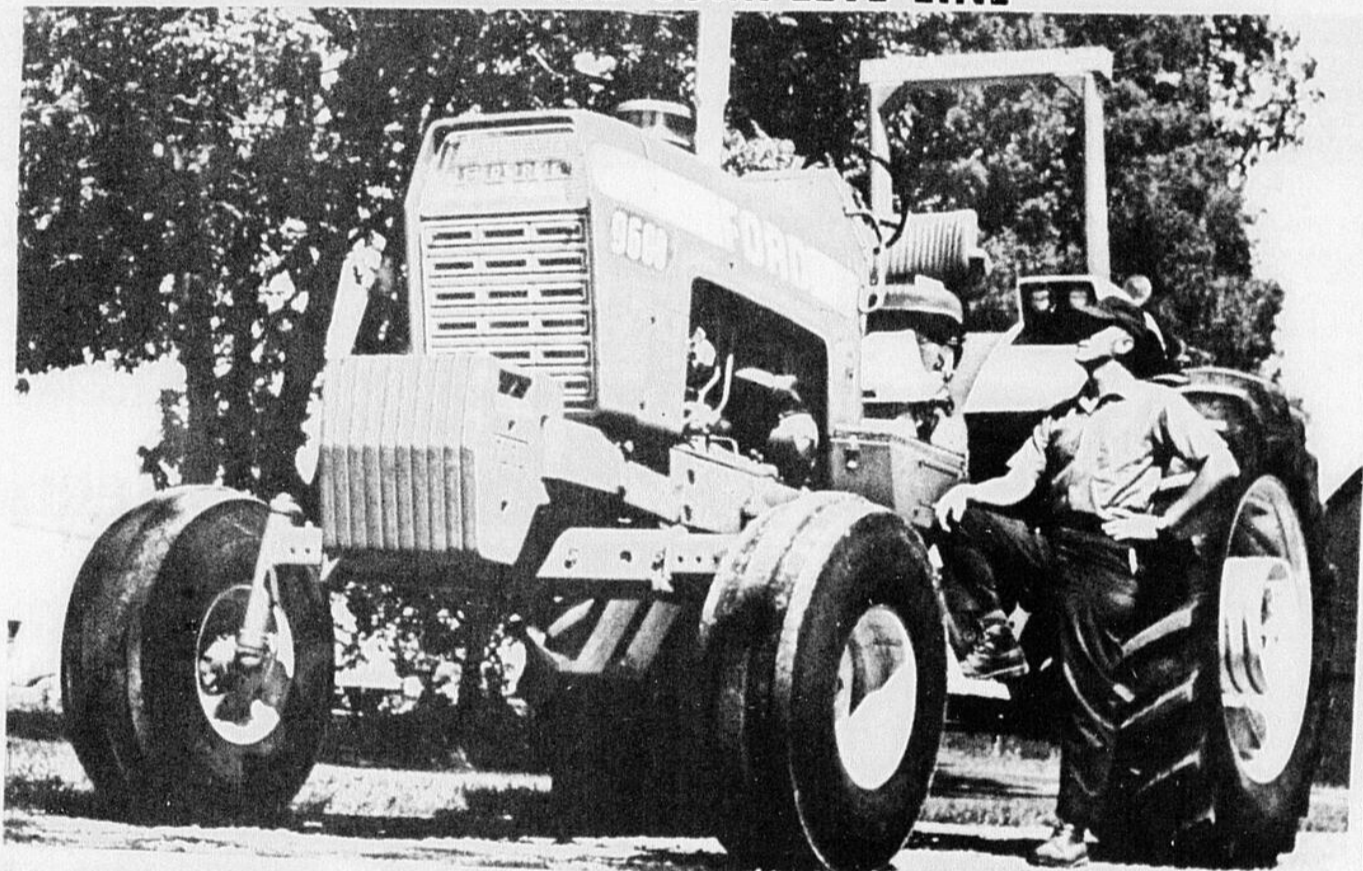
**FORD  
6000 TRACTOR  
135 H.P.**

THE MOST POWERFUL  
TRACTOR ON THE MARKET  
WE HAVE ALL THE  
ACCESSORIES ADAPTABLE  
TO THIS TRACTOR

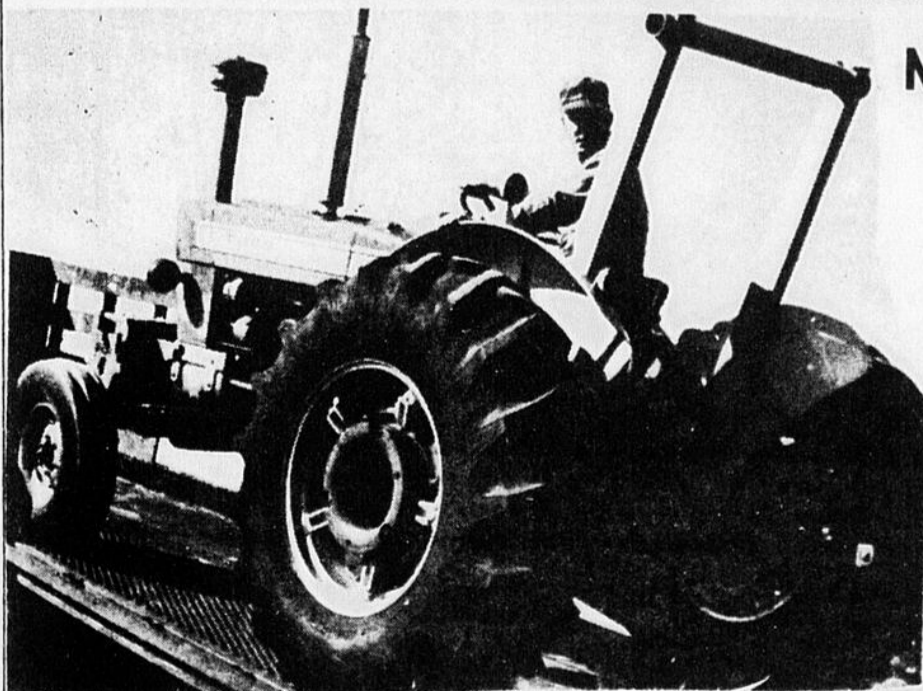
**5 YEARS  
TO PAY**

PARTS & SERVICE  
COMPLETE STOCK ON HAND

• QUALIFIED  
MECHANICS •



FULL LINE OF TRACTORS - FROM 32 H.P. to 135 H.P. P.T.O.



NEW  7000 83 H.P. P.T.O.

featuring

**EXCLUSIVE LOAD MONITOR**

GREATEST ADVANCE IN TRACTOR HYDRAULICS

SINCE THE 3-POINT HITCH!

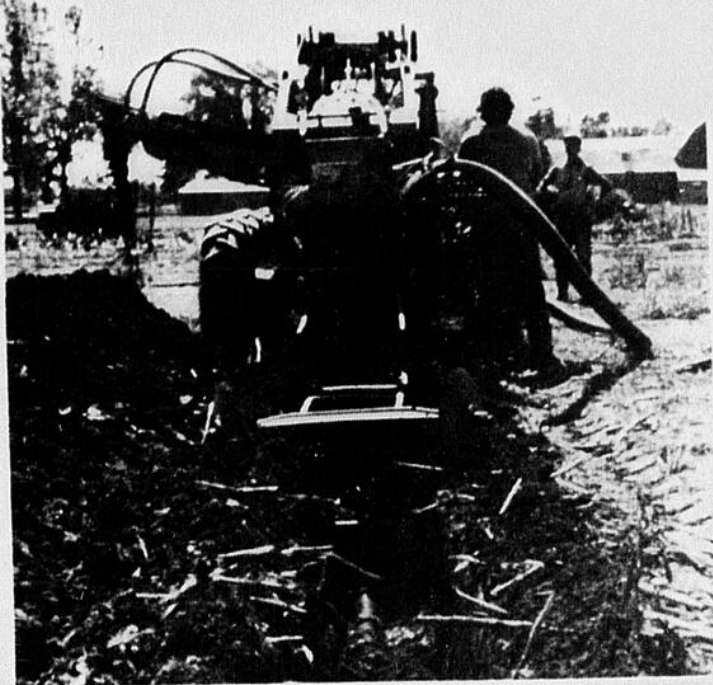
- 20% increase in power
- Comfortable seat
- Spacious platform
- Axle can be adjusted from 56 to 88 in.
- Easy starting gas model
- Diesel model starts easily in cold weather

# CLAUDE AGANIER Ltée

1325 St. Jean-Baptiste

Tel: 457-2118

Ste. Martine



This is a rear view of the tile machine at work shown on our front cover. The operator is Wayne Rowat of Huntingdon. The machine travels at about 20 feet a minute laying four-inch plastic pipe.

### Underground drainage is booming in the Chateaugay Valley.

Two-thirds of the improved farmland in the Chateaugay Valley region has poor natural drainage, according to John Purdon, agricultural engineering advisor for the Quebec Ministry of Agriculture in the district.

Given these conditions, artificial subsurface drainage is a major factor in increasing farm profitability, said Mr. Purdon.

Mr. Purdon, who is based at Chateaugay Centre, is concerned with agricultural engineering problems throughout Agricultural Region 7. This comprises the counties of Huntingdon, Chateaugay, Beauharnois, Laprairie, Napierville, St. Jean, Soulanges and Vaudreuil. He expounded on farm drainage at the recent Agricultural Encounter in Ormstown.

There are two main reasons for the poor natural drainage of Quebec agricultural soils, he said. These are the quality of the soil itself, and the climate.

Here in the St. Lawrence lowlands our clay or silty clay soils are generally the most fertile in the province, but have low permeability. Moreover, the topography is flat, resulting in slow surface water runoff.

The long winter with frozen, impermeable soil is followed by the rapid melting of spring, and often a wet fall.

"It follows that our soils are usually waterlogged in the spring and fall, and dry in the summer," said Mr. Purdon.

Natural drainage can be improved by artificial drainage, usually a surface drainage system and a subsurface drainage system. "The subsurface drainage system must be designed to remove the excess water in the subsoil. This is usually done by installing lines of drainage pipe in the subsoil. The removal of excess subsurface water can also be done by means of deep open 21 to 31 cents a foot of pipe installed, said Mr. Purdon. duits (pipes) are much greater because of reduced maintenance, increased area of tillable land, and fewer losses during field

operations.

"It is very important," Mr. Purdon went on, to consider the artificial drainage system as one system not a surface drainage system and a completely independent subsurface drainage system. Tile drainage does not eliminate the need for a good surface drainage system."

Cost of installing subsurface drainage pipes in this area runs in the order of 21 to 31 cents a foot of pipe installed, said Mr. Purdon. Four-inch pipe, including transport, comes at from 11 to 16 cents a foot; filter material 3 cents a foot, excavation and installation 9 to 10 cents a foot, and back-

filling 1 to 2 cents a foot. At 50-foot installation intervals this would represent an investment of \$180 to \$270 per acre improved, and half these figures if the lines had 100-foot spacing.

Taking a figure of 24 cents a foot for initial investment, average annual cost amortized over 20 years would be 2.64 cents a foot, or \$24 an acre for 50-foot spacing.

The profitability of artificial drainage systems depends on such a number of factors that it is difficult to pin down to an exact figure. The type of soil, the crop grown, the degree of mechanization and the skills of the farmer are all involved.

Mr. Purdon made a calculation for comparative purposes, however, using the example of a district farmer growing corn for on-farm use. Taking into account a 20-percent increased yield, a 5-percent larger growing area, saving the crop three times every 20 years, lower machinery and field operation costs and higher

harvesting and storage costs, for example, Mr. Purdon estimated net profit per acre would rise from \$12 to \$21 an acre, depending on the selling price of corn.

"We could also give the example of the corn grower in 1972. On well drained soil the farmer got almost normal yields while on poorly drained soils very few were able to harvest grain."

The Quebec Ministry of Agriculture helps farmers carry out drainage programs in two ways. First

there is the "bulldozer hours" plan, with financial aid ranging from 50 to 60 percent. The second is the tile drainage program, which includes help in planning and a grant of 10 cents per foot of tile installed.

All in all, said Mr. Purdon, "annual benefits of a well-drained soil allow you to pay for your investment and put some extra cash in your pocket."

"Don't forget what happened to your crops during the summer of '72"

## NEW HOLLAND AND BADGER

NEW AND USED  
PARTS FOR ALL REPAIRS ON  
ABOVE MACHINERY  
FARM EQUIPMENT  
FARMERS HARDWARE STORE  
**CHILTON BROS.**

ELLENBURG DEPOT, N.Y. TEL: 518-594-7511



## INTERNATIONAL TRUCK DEALER

COMPLETE STOCK OF  
INTERNATIONAL TRUCK PARTS

SALES AND SERVICE

**E. RENNIE & SON** REGD.

AUTHORIZED INTERNATIONAL DEALER

TEL. 829-2888

ROUTE 14

ORMSTOWN

## Supplying The Fuel Requirements of The Farming Community



OUR BUSINESS HAS COME ABOUT AS A RESULT OF CHANGES AND PROGRESS OF MODERN TIMES. FUEL SUPPLIES POWER FOR TRACTORS, ENGINES, CARS AND TRUCKS. FUEL SUPPLIES HEAT IN OUR HOMES AND OFFICES.

WHILE OIL HAS BEEN USED FOR MANY YEARS, THERE WERE VERY FEW KINDS. MODERN REFINING HAS BROUGHT ABOUT THIS GREATER USE OF OIL FOR THE VARIOUS MODERN REQUIREMENTS IN THIS FARMING COMMUNITY.

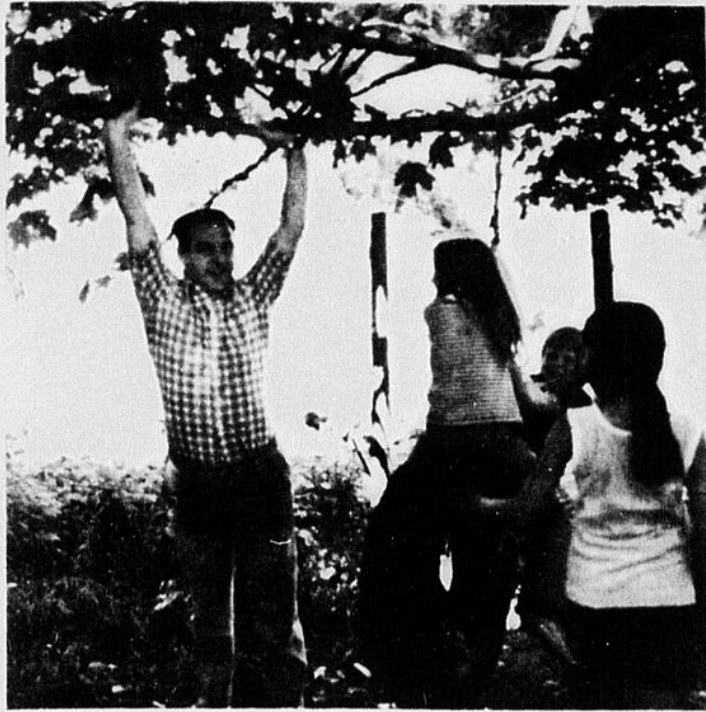
— WE OFFER A COMPLETE LINE OF SHELL PRODUCTS FOR FARMERS. —

# KEN FERNS

SHELL OIL PRODUCTS DEALER

TEL. 264-5388

HUNTINGDON



George Springate, MNA, plays Atlas in holding up a sagging tree branch for these youngsters planning to use a tire swing at the Dundee Farm of Kenneth Fraser, MNA. The children, from the Point St. Charles district of Montreal, were at the farm for an annual outing arranged by Messrs. Fraser and Springate. In all, 182 youngsters enjoyed the day.

## Reduce corn crop losses

An acceptable means of blackbird control has been sought for years, one that will protect food crops from depredation while at the same time preventing undue harm to wildlife.

Scientific studies have been undertaken because the Migratory Bird Treaty Act of 1918 gave the Federal Government responsibility for protecting migratory bird species, but recognized that control would be necessary when nuisance situations, such as excessive food crop depredations, occurred.

### Repellant Value Noted

Results of experiments indicate that Avitrol (4-amino pyridine), can be used effectively. Although the chemical is toxic, its primary value as a repellent lies in its ability to cause an erratic flying and calling behavior in birds that frighten away other members of the flock. Mortality, therefore, is reduced to a minimum.

Avitrol promises to be an improved control method over others tried previously against

blackbirds. Explosive scaring devices are time consuming and difficult to maintain, shotgun patrols are expensive, and toxicants, such as strychnine, are not selective in that they might kill nontarget species in appreciable numbers.

The chemical has been field tested since 1964. About a dozen noncrop uses for Avitrol already are registered, and the substance has been tested against starlings and sea gulls at airports and against pigeons in urban areas.

Due to the cost of the chemical and its application this product will be of value to growers who lose more than 4 to 6 bushels per acre to birds.

The calorie range for most of the buttermilk sold is 90-112 calories for eight ounces.

Farmers are increasing their productivity per man-hour at twice the rate of increased productivity in industry.

Buttermilk, with its unique flavor and slight acidity, makes light and tender cakes, biscuits and pancakes, and helps to tenderize meat.

## Collective medicine

(continued from page 4) question but personally I think the answer is yes, because your main source of income from the farm are your herds and, being experienced and alert, you are anxious to safeguard your productive assets.

The Quebec Department of Agriculture and Colonization clearly believes in the desirability of such a program since it places at your disposal, free of charge, veterinarians (whose training is directly related to animal health) to help you protect that productive investment, namely your herd.

What conditions are required for a successful preventive veterinary medical program?

Briefly, they are as follows: The producer must be serious, interested in his profession, realistic and

without self-deception in his profession, realistic and without self-deception in facing up to his problems, and must objectively size up his yield and ask himself pertinent questions; While asking himself questions and recognizing that he has problems, he must also be interested in solving them. He must have confidence in his veterinary adviser and strictly carry out the preventive measures recommended to him because these measures make up an interdependent set and, if some are neglected, the preventive program will lose a fair amount of its effectiveness; If necessary, there must be appropriate technical and financial aid available.

Even if these three conditions are met, we do not

pretend that we can solve all your animal health problems but, together, we shall be able to solve some of them.

Preventive veterinary medicine can be summed up in three words—hygiene, environment, and feeding.

Veterinarians, farmers and milk producers, we have a common aim—the health of the herd.

Why not pool our knowledge and skill in the interests of achieving it. Let us never forget that our cattle did not ask for the conditions we impose on them. It is all of us here present who have changed them and who demand of our animals performances for which nature did not prepare them.

To get maximum profit from our cattle, let us respect them.

## Exchange trip set

The Quebec Young Farmers' Provincial Federation is sponsoring an exchange trip to England in July 1973, with the Young Farmers of Great Britain.

The three participants, Marian Smith, Huntingdon; Kathleen Keenan, Richmond; and Valerie Graham, Athelstan, will be studying the English agricultural techniques and exchanging ideas with several English 4-H clubs.

The delegates will be hosted by the regional 4-H Club of Kenilworth who will show them several farms, and agricultural enterprises. They will also exchange information with the local 4-H clubs, on their activities and programs.

SEED GRAIN  
•  
GRASS SEEDS  
•  
SEED CLEANING  
•  
BARBED WIRE  
•  
SHUR-GAIN FEED  
•  
FEEDS OF ALL KIND  
•

**JULIEN GIROUARD**

DEWITTVILLE

TEL: 264-2380

## GERARD MAHEU INC.

ST. LOUIS DE GONZAGUE

TEL: 373-1420



MOULEES SHUR • GAIN



ENGRAIS CHIMIQUES NUTRITE

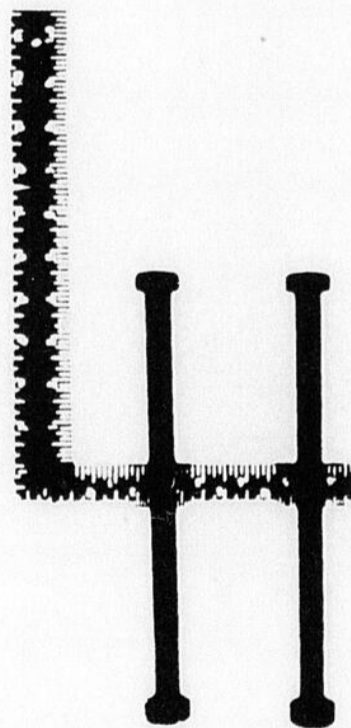
DEPOSITAIRE DES HERBICIDES

SHELL • CHAPMAN • FISON

LIGNE COMPLETE

POUR DETRUIRE TOUTES

LES MAUVAISES HERBES



**Lawrence Hardware**  
**Reg'd**

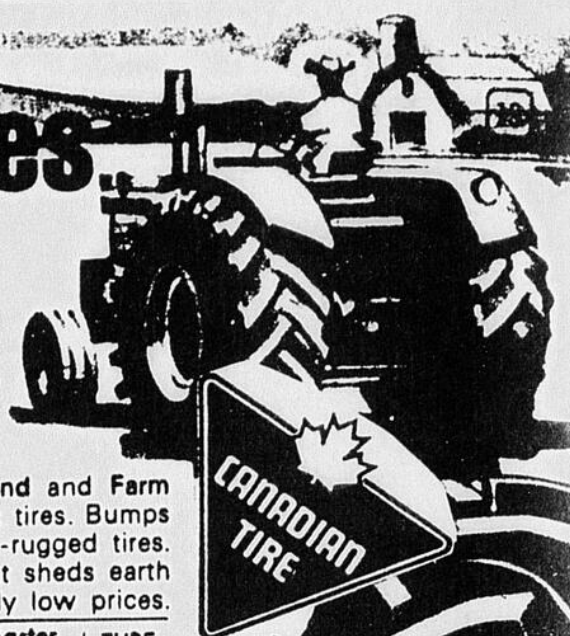
"WHERE EVERY CUSTOMER GETS A SQUARE DEAL"

8 CHURCH ST.

ORMSTOWN

# SUPER-LASTIC Tractor Tires

## ... high quality, low cost



### SPIRAL-GRIP TRACTOR CHAINS



For use on farm tractors and farm land only (not for hard-surfaced roads). Easy to mount, give added traction, self-cleaning. No adjusters needed.

We carry Spiral-Grip chains in farm-tractor tire sizes ranging from 7/24 to 18.4/34. State tire size when ordering. 30-0510X—Pair . . . . . 34.50 to 89.50 Both Replacement Cross Chains and Connecting Hooks are also available for tractor tire chains.

### General-Purpose Chains

Designed for general use around farm. Hardened steel construction for rugged service, plus top mileage, at low cost. Available in Regular-Duty (with cross chains spaced every 4 links) or Double-Duty (with cross chains spaced every 2 links) for most tractor tire sizes. State tire size and type of chains (Regular or Double-Duty) when ordering.

**Regular-Duty Chains** — 4-link cross-chain spacing. 30-04X—Pair . . . . . 35.75 to 85.95

**Double-Duty Chains** — 2-link cross-chain spacing. 30-04X—Pair . . . . . 61.95 to 151.95

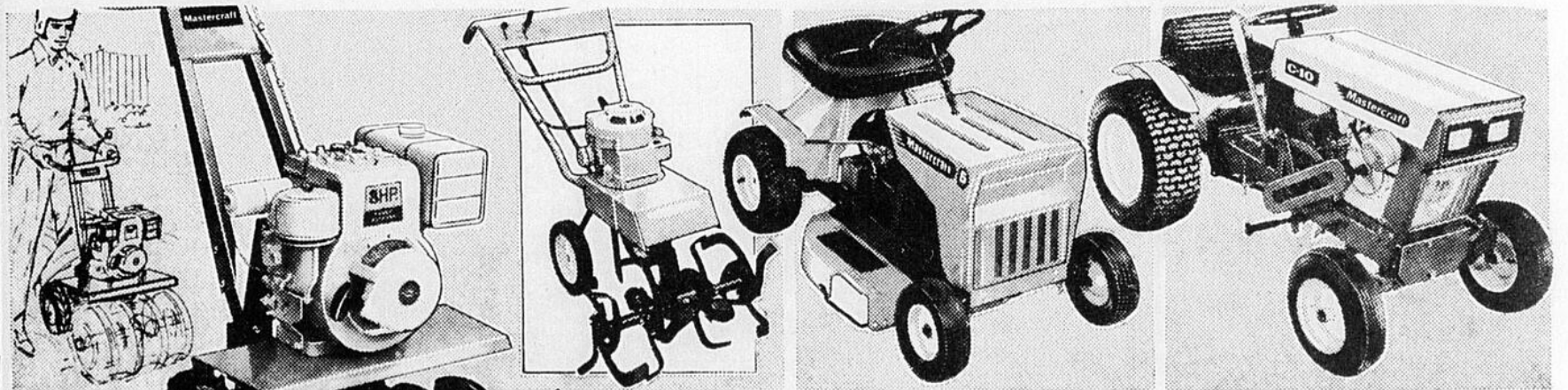
Built to last with Du Pont non-rot NYLON... designed for the best grip yet

Tractor tires are built in two grades — Farm Hand and Farm Master — to the same high standards as our truck tires. Bumps and impacts are all in a day's work to these extra-rugged tires. Rear tire is molded in the 'open-centre' design that sheds earth as it grips. Many other sizes are available at equally low prices.

Front Size	Ply Rating	List Price	Farm Hand		Farm Master		TUBE
			Factory-Door Price	*After Discount for Cash	Factory-Door Price	*After Discount for Cash	
4.00/12	4	20.00	13.78	13.09	—	—	2.76
4.00/15	4	16.25	9.42	8.95	—	—	2.90
5.00/15	4	18.55	10.35	9.83	13.08	12.43	2.48
5.50/16	4	20.25	12.55	11.92	15.19	14.43	2.91
5.50/16	6	25.30	14.33	13.61	—	—	2.91
6.00/16	4	22.80	14.46	13.74	15.21	14.45	2.91
6.00/16	6	28.70	15.67	14.89	17.08	16.23	2.91
6.50/16	4	25.10	15.63	14.85	16.56	15.73	3.06
6.50/16	6	31.30	16.69	15.86	18.59	17.66	3.06
7.50/16	4	32.55	20.14	19.13	20.25	19.24	3.32
7.50/16	6	40.75	21.50	20.43	22.10	21.00	3.32
4.00/19	4	18.85	11.25	10.69	14.38	13.66	3.04
<b>Rear</b>							
8.3/24 (8/24)	4	55.10	40.45	38.43	—	—	7.16
9.5/24 (9/24)	4	65.35	38.80*	36.8.	—	—	7.05
11.2/24 (10/24)	4	79.40	45.48	43.21	57.83	54.94	9.15
14.9/24 (13/24)	6	143.80	69.10	65.64	90.40	85.88	12.56
14.9/26 (13/26)	6	132.95	72.17	68.56	85.10	80.85	13.15
11.2/28 (10/28)	4	74.45	49.10	46.64	59.98	56.98	8.85
12.4/28 (11/28)	4	89.05	56.70	53.86	68.83	65.39	9.78
13.6/28 (12/28)	4	101.70	68.35	64.93	79.86	75.87	13.20
14.9/28 (13/28)	6	141.30	76.45	72.63	110.26	104.75	13.20
16.9/30 (14/30)	6	171.25	95.75	90.96	106.95	101.60	15.20
9.5/32 (9/32)	4	90.15	46.60	44.27	—	—	12.35
11.2/36 (10/36)	4	101.05	60.50	57.48	—	—	16.95
11.2/38 (10/38)	4	110.95	63.00	59.85	—	—	10.25
12.4/38 (11/38)	4	117.50	70.36	66.84	86.33	82.01	11.55
13.6/38 (12/38)	6	137.00	89.09	84.64	111.95	106.35	14.50
<b>Implement</b>							
6.70/15	6	30.85	13.85	13.16	15.89	15.10	2.83
7.60/15	6	38.45	15.44	14.67	17.99	17.09	3.16
6.00/16	6	26.90	13.85	13.16	—	—	2.91
6.50/16	6	30.60	14.54	13.81	16.56	15.73	3.06
7.50/16	8	43.30	21.36	20.29	23.07	21.92	3.32

Freight Extra.

\*5% Discount for Cash (in lieu of Bonus Coupons)



**GIANT 8-h.p. Mastercraft Garden Tiller**  
 26" Vertical Drive  
 3 1/2-h.p. Tiller  
**129.88**

Briggs & Stratton engine; 26" horizontal drive; recoil start; 14" slasher tines. Ultra-gear 2-speed transmission. Safety-controlled reverse; tine shield. Tills 0 to 8" deep.  
**249.95** with muffler

Ultra-gear transmission—forward and neutral; 0 to 8" tilling depth; 14" bolo-type tines guaranteed against breakage; tine shield. 10 x 2 3/4" tires. 5-H.P. 26" TILLER: looks like 8-h.p. with bolo-tines. 182.95

**VERSATILE RIDING-MOWER**  
 5-h.p. Mastercraft  
**299.95**

Rugged 4-cycle Briggs & Stratton engine; recoil start. Forward, neutral and reverse gears. Foot-operated combination clutch/brake. Adjustable 24" deck. Turf-Saver 6.00 x 13" pneumatic rear tires. Non-rust body shell.

(Allow up to 2 weeks to fill orders on tractors)

Get gardening early—with a Canadian Tire CREDIT CARD

**POWERFUL 4 SPEED RIDING-TYPE**  
 10 h.p. Mastercraft  
**889.95**

Easy-rider tackles tough yard-jobs. 4-cycle Briggs & Stratton engine; torque driveshaft; single-pedal brake/clutch; 12-volt push-button starting. 14" front tires; 22" lug-type rear tires. Overall size: 63-3/8" x 36-3/8".  
 38" MOWER ATTACHMENT: Centre-mount; heavy steel deck. . . . . 198.95  
 SNOW-THROWER ATTACHMENT: Adjustable discharge feature. . . . . 239.95



**CANADIAN TIRE**  
 ASSOCIATE STORE

ARMAND ST-JACQUES INC.

560 BOUL. MGR. LANGLOIS  
 (FACING MAJOR AUTOMOBILE)

TEL. 371-2470  
 VALLEYFIELD



123 456 789  
 JOHN DOE



A group of youngsters from Point St. Charles and Little Burgundy districts of Montreal, 182 of them in all, enjoyed a day's outing at the farm of Kenneth Fraser, MNA, Dundee, last week. Their sponsor was George Springate, MNA for their district. Here Messrs. Springate (left) and Fraser join some of the children in a hay ride.

province relative to agriculture, shall have effect in and for the province as long and as far as it is not repugnant to any Act of Parliament of Canada".

A Department of Agriculture with a Minister of Agriculture at its head was accordingly established as part of the Government of Canada, and departments of agriculture headed by provincial ministers were also set up by the provincial governments. In the

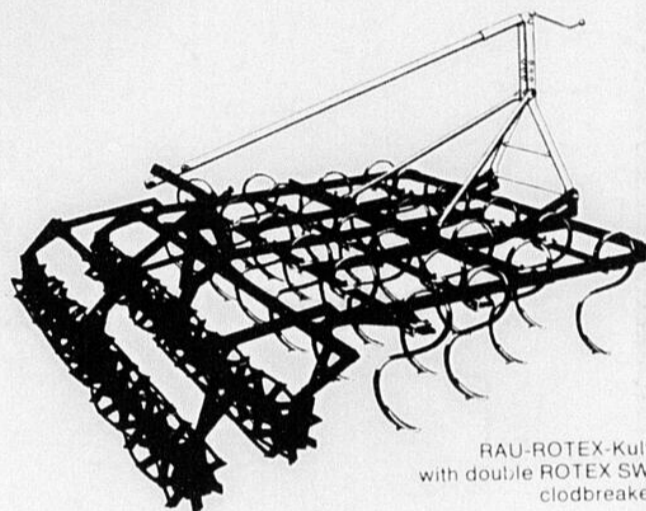
Yukon and Northwest Territories, agriculture is of very minor importance and is administered by the federal Department of Indian Affairs and Northern Development.

Activities of the Canada Department of Agriculture (CDA) cover three broad areas: research, promotional and regulatory services, and assistance programs.

**DEALER FOR**



**RAU KOMBI System**



RAU-ROTEX-Kulti with double ROTEX SW-clodbreaker

ALSO FULL LINE OF:

**FORD MACHINERY AND TRACTOR.**

**GARAGE F. LAPIERRE**

CAZAVILLE

TEL: 264-5579



**SALE CEMENT**

**STEEL**

**PRESTONE**

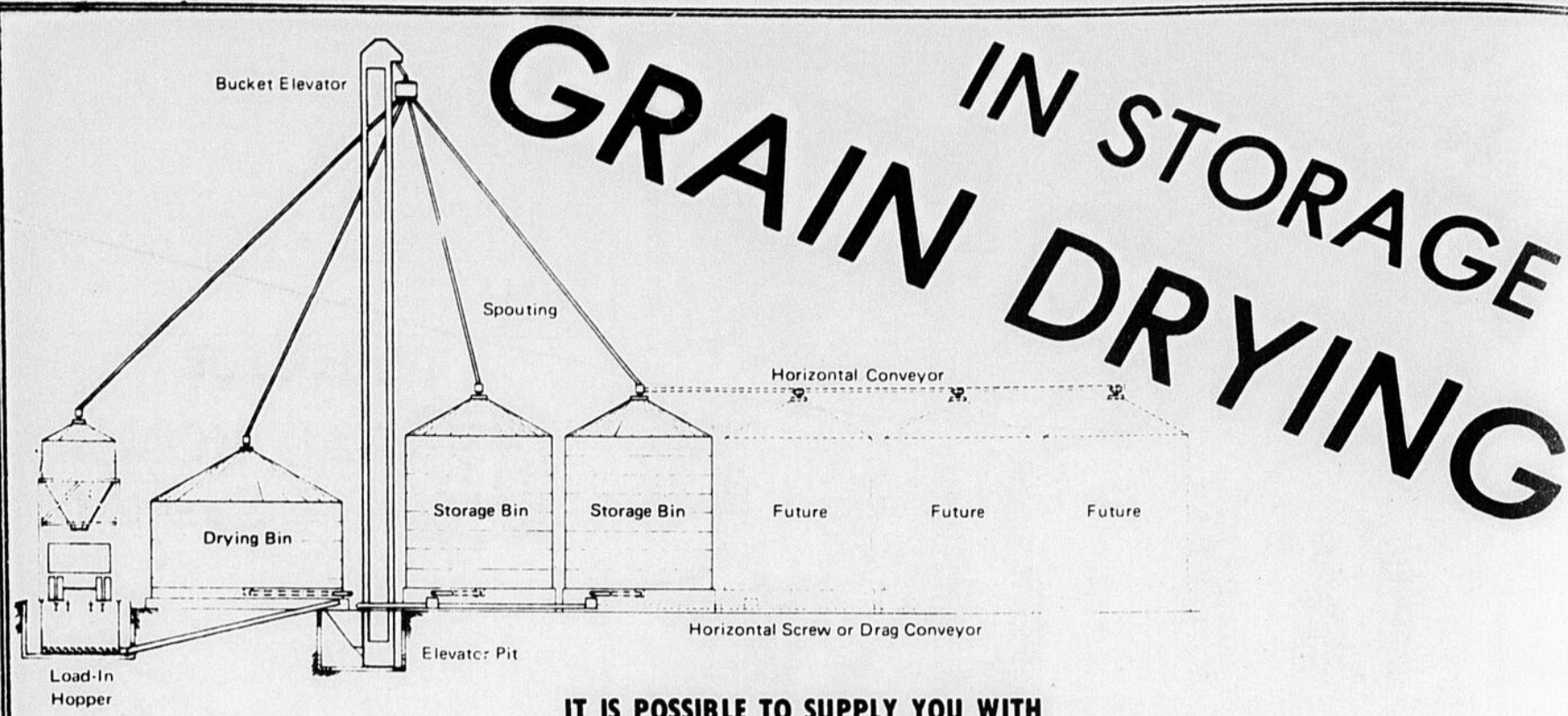
**Farming and the government**

The Canada Department of Agriculture dates from Confederation on 1867. It was established as an out-growth of the Province of Canada's Bureau of Agriculture, which was set up in 1852. The Department's authority lies in the British North America Act, 1867, which states in part, "in each province, the legislature may make laws in relation to agriculture in the province" and "the Parliament of Canada may from time to time make laws in relation to agriculture in all or any of the provinces; and any law of the legislature of a

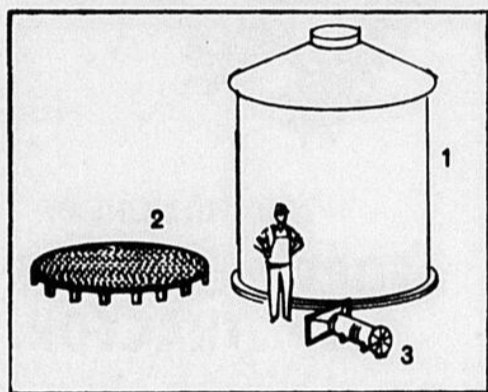
A W I S H  
TO THE MEMBERS  
OF THE LOCAL  
FARMING COMMUNITY  
**GOOD WEATHER**  
**GOOD CROPS**  
**GOOD HARVEST**

**JON PROUDFOOT C.I.B.**

**ALL LINES OF INSURANCE  
FOR THE FARM**

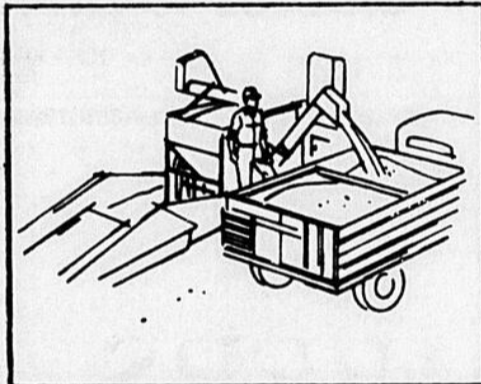


IT IS POSSIBLE TO SUPPLY YOU WITH  
**PROPANE GAS**  
 FOR ANY TYPE, SIZE or MAKE OF GRAIN DRYER



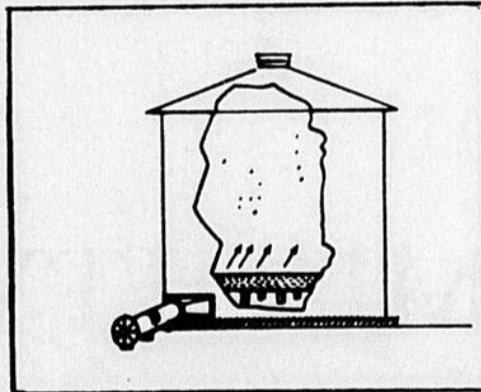
WHAT IS "IN-STORAGE" GRAIN DRYING?

In-storage grain drying is a modern, automatic system of drying any type of grain. It can be adapted to any size farm operation. The system requires (1) a storage bin or bins, (2) a perforated drying floor adapted for the drying process, (3) a fan-heater unit, (4) a method of humidity and temperature control. This equipment makes for a low cost grain drying system.



WHAT IS THE ADVANTAGE OF "IN-STORAGE" DRYING?

Simply stated, the system enables you to harvest your grain as soon as it is mature... with little regard to the weather. With the system in operation you avoid field losses and bad weather delays. You plan your harvesting operation to suit your time and work schedules. Many grain farmers have found that it permits them to eliminate the swathing operation entirely. You store your grain at premium quality and market it when prices are highest.



HOW DOES THE SYSTEM WORK?

As you deliver your grain to the drying bin, a fan unit with supplemental heater automatically supplies natural or heated dry air to the bin to provide favourable drying conditions. A humidistat or thermostat controls the temperature and humidity of the air as it moves up, through the perforated floor and the grain in the bin. When natural air is sufficient the system provides it...when heat is required, it goes on automatically. The built-in controls ensure that the grain is not overheated. The result is dry grain that can be stored without loss until required for sale or processing.

**THE ECONOMIC ADVANTAGES**

Grain drying, using heated forced air, mechanizes a task that, until recently, has always been left to nature. Because grains reach maturity, through nature's method, from one to three weeks before they are dry enough to store, the advantages of mechanized crop drying are obvious.

More than that, a farm manager, having his own drying and storage facilities can enjoy important time savings during the busy

harvest season. Harvesting can begin practically at the crack of dawn. There is no need to wait until the sun has dried off the dew from the crops. With adequate mechanized drying, hours of delay a day can be saved.

There is every indication that controlled grain drying will become standard farm practice.



DIVISION OF

**MARCHAND FRERES**

TEL. 264-5441

75 CHATEAUGUAY

HUNTINGDON