



# PARC NATIONAL DU FJORD-DU-SAGUENAY



## HIGHLIGHTS

### VIA FERRATA

Anchored to the cliffs that tower high above Baie Éternité, the Via Ferrata des Géants consist of three spectacular guided tours.



### HUTTOPIA POINTE-DU-MOULIN

Camp in one of our five new Huttoopia tents nestled within a pristine natural environment in Baie-Sainte-Marguerite. Accessed via bicycle or on foot.



### RABASKA

Join the crew of this rabaska canoe and paddle your way into the fur trade era! Our expert guides will introduce you to the ancient customs and practices of the coureurs de bois as you navigate the waters of Baie Éternité.



# WELCOME

QUÉBEC  
NATIONAL PARKS DAY

SEPTEMBER 9,  
2017

## EXPLORE NATURE AT ITS FINEST

Québec national parks provide a unique opportunity to enjoy nature at its finest.

The entry fee you're required to pay is your contribution to the development and conservation of these territories.

### FREE ADMISSION FOR CHILDREN 17 YEARS AND UNDER

Daily entry fee - Adults 18 years and over	\$8.50
Annual Network Card	\$76.50
Annual Park Card	\$42.50

Rates valid until December 31, 2017, taxes included. See complete fee schedule at [sepaq.com/parkscard](http://sepaq.com/parkscard)

## ANNUAL PARCS QUÉBEC NETWORK CARD

Unlimited access to all of Québec's national parks for 12 months and an array of exclusive benefits:

- ONE FREE NIGHT OF CAMPING on a weekday, in any Sépaq destination (value of free night is for a semi-serviced site)
- ONE DAY PASS for a friend
- BOUTIQUES 15% off regular-priced items\* in all Sépaq boutiques
- CROSS-COUNTRY SKIING 15% off a day ticket
- AQUARIUM DU QUÉBEC 15% off daily admission
- PARC NATIONAL DU MONT-MÉGANTIC 15% off admission to the ASTROLab
- PARC NATIONAL DE MIGUASHA Free admission to exhibits

Certain conditions apply.  
\*Excluding convenience store products and ski products.

Details at [sepaq.com/parkscard](http://sepaq.com/parkscard)

## CONTEST DESTINATION PARCS NUNAVIK

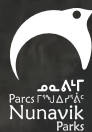
Between April 1 and September 1, 2017, when you purchase or renew your Annual Network Card, you could win a stay for 2 in a national park of Nunavik.

### A \$10,000 VALUE!

Experience the journey of a lifetime. A choice among 3 destinations to explore at [parcsnunavik.ca](http://parcsnunavik.ca):

- Parc national des Pingualuit
- Parc national Kuururjuaq
- Parc national Tursujuq

Details and contest rules at [sepaq.com/contest](http://sepaq.com/contest)



# MUST-DOS

## THE PHENOMENIAL FJORD

Welcome to the land of endless panoramic vistas in the heart of Parc National du Fjord-du-Saguenay! Over 100 km in length, this inlet etched in stone and invaded by the sea, is the longest fjord in the world at this low latitude. For over 30 years, the park has protected and showcased both of the fjord's banks that stretch over 326.8 km<sup>2</sup> of protected territory. Whether you're on the ground, over the sea or in the air, discover a succession of coves and bays with landscapes that are ever changing with the rise and fall of the tides. Welcome to your adventure.

## L'ANSE-DE-TABATIÈRE

The only viewpoint overlooking the Fjord that is accessible by car. You will appreciate the many amenities in this truly unique place. The short walking trail, no more than 500 m in length, is bordered with discovery panels.



## CAMPING POINTE-DU-MOULIN

Wilderness camping along the Baie Sainte-Marguerite shoreline. Accessed by bicycle or on foot, the privacy and peacefulness of these campsites are a pure delight.



## HALTE DU BÉLUGA

Come and meet this uncommon mammal. In summer, where the Saguenay Fjord and Baie Sainte-Marguerite meet, scan the waters for white shapes... an opportunity to watch beluga whales as they unfailingly visit these parts.



## THE GIANT'S LOOKOUT

Discover a dazzling lookout on the fjord! Observe Baie Éternité and Cap Trinité from a completely different view! 10.4 km (round trip), 4-5 h



# VIA FERRATA DES GÉANTS BAIE-ÉTERNITÉ SECTOR



## Discover Baie Éternité from the skies above!

Anchored to the cliffs that tower high above the bay, cross the void over an 85 m long suspended bridge. Groups are limited to a maximum of 8 people to ensure that the guide remains in proximity. The individuals cross at their own pace under safe conditions.

For more information or reservations, visit the Discovery and Visitors Centre or call **1 800 665-6527** or **418 272-1556**. Reservations can also be made online by visiting **[www.parcquebec.com](http://www.parcquebec.com)**.

EXPERIENCE APPROXIMATE DURATION	DEGREE OF DIFFICULTY	LENGTH	DEPARTURE TIMES	RATES
<b>La Passerelle</b> 3.5 hours	Easy	295 m	June 10 and 11, in addition to June 17 and 18 (Saturday and Sunday): 8:45 a.m. From June 24 until September 4 (7 days a week): 8:45 a.m., 2:15 p.m. and 3 p.m. From September 7 to October 9 (Thursday to Monday): 8:45 a.m.	\$46 (18 and over) \$34.50 (ages 12 to 17)
<b>La Grande Dalle</b> 4.5 hours	Intermediate	570 m	June 10 and 11, in addition to June 17 and 18 (Saturday and Sunday): 12:30 p.m. From June 24 until September 4 (7 days a week): 9:15 a.m., 10:15 a.m. and 12:45 p.m. From September 7 to October 9 (Thursday to Monday): 12:30 p.m.	\$60 (18 and over) \$45 (ages 14 to 17)
<b>L'Odysée</b> 6.5 hours	Difficult	850 m	June 10 and 11, in addition to June 17 and 18 (Saturday and Sunday): 9s:45 a.m. From June 24 until September 4 (7 days a week): 9:45 a.m. and 11:30 a.m. From September 7 to October 9 (Thursday to Monday): 9:45 a.m.	\$84 (18 and over) \$63 (ages 14 to 17)

Photo : Borani-Richard

Photo : Charles-David Robitaille

**1-888 674-9114**

**capjaseux.com**

# WATER ACTIVITIES BAIE-ÉTERNITÉ SECTOR

## Sail across the waterways of the Saguenay-St. Lawrence Marine Park!

No matter how you travel, attentive guides will unveil a unique marine environment nestled between two shores.

For more information or reservations, visit the Discovery and Visitors Centre or call 1 800 665-6527 or 418 272-1556.



## SEA KAYAKING

From June 10 to 23\* – Saturday and Sunday

- 9:30 a.m. to 12:30 p.m.
- 1:30 p.m. to 4:30 p.m.

From June 24 until September 4 – seven days a week

- 9:30 a.m. to 12:30 p.m.
- 11:30 p.m. to 4:30 p.m.

From July 15 until August 20, a third expedition is offered at the end of the day from

- 5 p.m. to 7 p.m.

From September 5 until October 9\* – Saturday and Sunday

- 9:30 a.m. to 12:30 p.m.
- 1:30 p.m. to 4:30 p.m.

\* Excursions possible during the week with reservations 24 hours in advance (starting from 4 people).

- Rates:**
- \$52 /adult
  - \$45 /child (17 or under)
  - \$165 /famille (2 adults and 2 children)



## CRUISES

From June 3 until the 30 – seven days a week

- 10 a.m. to 12 p.m.
- 2:30 p.m. to 4:30 p.m.

From July 1 until September 4 – seven days a week

- 10:30 a.m. to 3 p.m. (stopover in L'Anse-Saint-Jean from 12 p.m. to 2:30 p.m.)
- 1:00 p.m. to 3 p.m.

From September 5 until October 9 – seven days a week

- 10:00 a.m. to 12 p.m.
- 2:30 p.m. to 4:30 p.m.

- Rates:**
- \$58 /adult
  - \$30 /child (17 or under)
  - \$144 / family (2 adults and 2 children)
  - Free for kids ages 5 or under

## ZODIAC

From June 10 until 23 – Saturday and Sunday\*

- 10 a.m. to 12 p.m.
- 2 p.m. to 4 p.m.

From June 24 until September 4 – seven days a week

- 10 a.m. to 12 p.m.
- 2 p.m. to 4 p.m.

From July 15 until August 20, a third expedition is offered at the end of the day from

- 5 p.m. to 7 p.m.

From September 5 until October 9 – Saturday and Sunday\*

- 10 a.m. to 12 p.m.
- 2 p.m. to 4 p.m.

\* Excursions possible during the week by request (starting from 4 people)

### Rates:

- \$52 /adult
- \$45 /child (17 or under)
- \$165 / family (2 adults and 2 children)



## SAILING AND OVERNIGHT STAY ON SAILBOAT

How does sailing under the stars in Baie Éternité sound? Live the life of a sailor with an initiation excursion with Voile Mercator. Boating, a three-course meal, one night on-board accommodations and breakfast included. Seven days a week from June 13 until September 13, boarding at 1:45 p.m.

Visit [www.voilemercator.com](http://www.voilemercator.com) for more information.

Reservations: 1 888 674-9309

# DISCOVERY ACTIVITIES BAIE-ÉTERNITÉ SECTOR (June 23 to August 20)

Offered in French only.

DAY	HOURLY	DURATION	ACTIVITIES	TYPE OF ACTIVITY	LOCATION
Monday	10 a.m. to 2 p.m.	15 min	La faune du fjord	Posted activity	Terrace behind Discovery and Services Centre
	10:30 a.m. to 1:30 p.m.	15 min	Un paysage à couper le souffle	Posted activity	Halte Bellevue
	4 p.m. to 5:30 p.m.	1½ h	Un commis voyageur à l'époque du rabaska \$☎	Rabaska canoeing	Terrace behind Discovery and Services Centre
Tuesday	2:30 p.m. to 5:30 p.m.	15 min	Naviguez l'histoire du Saguenay	Posted activity	Observation deck in l'Anse-de-Tabatière
	8:30 p.m. to 10 p.m.	1½ h	Voyage au bout de la nuit \$☎	Night hike nocturne	Terrace behind Discovery and Services Centre
Wednesday	12:30 p.m. to 3 p.m.	15 min	La faune du fjord	Posted activity	Terrace behind Discovery and Services Centre
	4 p.m. to 5:30 p.m.	1½ h	Un commis voyageur à l'époque du rabaska \$☎	Rabaska canoeing	Terrace behind Discovery and Services Centre
	7:30 p.m. to 8:30 p.m.	1 h	Le sorcier du Saguenay	Theatrical presentation	Terrace behind Discovery and Services Centre
Thursday	2 p.m. to 4 p.m.	15 min	La faune du fjord	Posted activity	Terrace behind Discovery and Services Centre
	8:30 p.m. to 10 p.m.	1½ h	Voyage au bout de la nuit \$☎	Night hike nocturne	Terrace behind Discovery and Services Centre
Friday	11 a.m. to 1 p.m.	15 min	Charles-Napoléon Robitaille	Posted activity	At the base of the statue
	1 p.m. to 5 p.m.	15 min	Naviguez l'histoire du Saguenay	Posted activity	Observation deck in l'Anse-de-Tabatière
	2:30 p.m. to 4:30 p.m.	15 min	Un paysage à couper le souffle	Posted activity	Halte Bellevue
	7:30 p.m. to 8:30 p.m.	1 h	SOS Chauves-souris	Talks	Camping (salle communautaire A)
Saturday	10 a.m. to 2 p.m.	15 min	La faune du fjord	Posted activity	Terrace behind Discovery and Services Centre
	4 p.m. to 5:30 p.m.	1½ h	Un commis voyageur à l'époque du rabaska \$☎	Rabaska canoeing	Terrace behind Discovery and Services Centre
	8:30 p.m. to 10 p.m.	1½ h	Voyage au bout de la nuit \$☎	Night hike nocturne	Terrace behind Discovery and Services Centre
Sunday	11 a.m. to 1 p.m.	15 min	Charles-Napoléon Robitaille	Posted activity	At the base of the statue
	1 p.m. to 5 p.m.	15 min	Naviguez l'histoire du Saguenay	Posted activity	Observation deck in l'Anse-de-Tabatière
	2:30 p.m. to 4:30 p.m.	15 min	Un paysage à couper le souffle	Posted activity	Halte Bellevue
	7:30 p.m. to 8:30 p.m.	1 h	Faucon les protège!	Talks	Campsite (community hall «A»)

\$☎ - These presentations will begin on July 7. There is a fee and reservations are required.

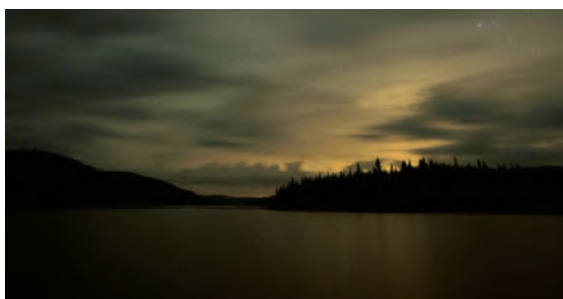
## VOYAGE AU BOUT DE LA NUIT

Night-time is quiet time? Don't you believe it! Bats, owls, butterflies, and other nocturnal creatures come to life in the dark. With a park warden, intrude on this world of mysteries... Reservations are required and can be made at the Discovery and Visitors Centre or by phone at 418 272-1556.

**Rates:** Adult: \$10

Children: free (accompanied by an adult)

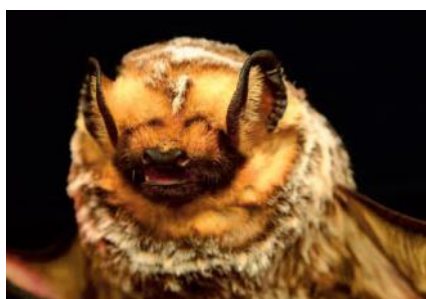
Non recommended for children under 6 years of age.



## SOS CHAUVES-SOURIS

Bats have always been part of our nighttime stories but how much do we really know about them? These little mammals that fly "under the radar" are in serious decline. Join us as we tell the passionate saga of these beautiful but gloomy creatures.

**Duration:** 1 h **Rates:** free



## UN COMMIS VOYAGEUR À L'ÉPOQUE DU RABASKA

Join the crew of this rabaska canoe and paddle your way into the fur trade era! Our expert guides will introduce you to the ancient customs and practices of the coureurs de bois as you navigate the waters of Baie Éternité.

Reservations required: Call 418 272-1556 or visit the Discovery and Visitors Centre.

**Rates:** Adult: \$16

Children: free

(accompanied by an adult)

Non recommended for children under 6 years of age.

# BAIE-SAINTE-MARGUERITE SECTOR (June 23 to September 4)

Offered in French only.

DAY	HOOR	DURATION	ACTIVITIES	TYPE OF ACTIVITY	LOCATION
Monday	12:30 p.m. to 4:30 p.m.	15 min	La halte du béluga	Posted activity	La Halte du Béluga observation deck
	7 p.m. to 8 p.m.	15 min	SOS Chauves-souris	Talks	Le Béluga Discovery and Services Centre
Tuesday	12:30 p.m. to 4:30 p.m.	15 min	La halte du béluga	Posted activity	La Halte du Béluga observation deck
	7 p.m. to 8 p.m.	1 h	Les mille et un visage de la baie	Talks	Le Béluga Discovery and Services Centre
Wednesday	12:30 p.m. to 6 p.m.	15 min	La halte du béluga	Posted activity	La Halte du Béluga observation deck
	8:30 p.m. to 10 p.m.	1½ h	Voyage au bout de la nuit 🇺🇸	Night hike nocturne	Le Béluga Discovery and Services Centre
Thursday	12:30 p.m. to 4:30 p.m.	15 min	La halte du béluga	Posted activity	La Halte du Béluga observation deck
Friday	12:30 p.m. to 4:30 p.m.	15 min	La halte du béluga	Posted activity	La Halte du Béluga observation deck
	7 p.m. to 8 p.m.	1 h	Lumière sur les étoiles	Talks	Le Béluga Discovery and Services Centre
Saturday	12:30 p.m. to 4:30 p.m.	15 min	La halte du béluga	Posted activity	La Halte du Béluga observation deck
	7 p.m. to 8 p.m.	1 h	Faucon les protège!	Talks	Le Béluga Discovery and Services Centre
Sunday	2 p.m. to 6 p.m.	15 min	La halte du béluga	Posted activity	La Halte du Béluga observation deck
	8:30 p.m. to 10 p.m.	1½ h	Voyage au bout de la nuit 🇺🇸	Night hike nocturne	Le Béluga Discovery and Services Centre

🇺🇸 - These presentations will begin on July 7. There is a fee and reservations are required.

## VOYAGE AU BOUT DE LA NUIT

Night-time is quiet time? Don't you believe it! Bats, owls, butterflies, and other nocturnal creatures come to life in the dark. With a park warden, intrude on this world of mysteries... Reservations are required and can be made at the Discovery and Visitors Centre or by phone at 418 236-1162.

**Rates:** Adult: \$10

Children: free (accompanied by an adult)

Non recommended for children under 6 years of age.

## LAISSEZ-VOUS CHARMER PAR LES NYCTALES

Get involved in Tadoussac bird observatory (OOT) research activities, the ideal place to observe and learn everything you ever wanted to know about the work of a master bird catcher, whose job it is to band small night owls. Watch this artist at work live onscreen. You may even get an opportunity to tag along with the OOT team as they check their nets. Fridays and Saturdays from September 8 until October 7, 8 p.m. to 9:30 p.m. Reservations required with the Discovery and Visitors Centre or by calling 418 236-1162.

**Rates:** Adult: \$10.75

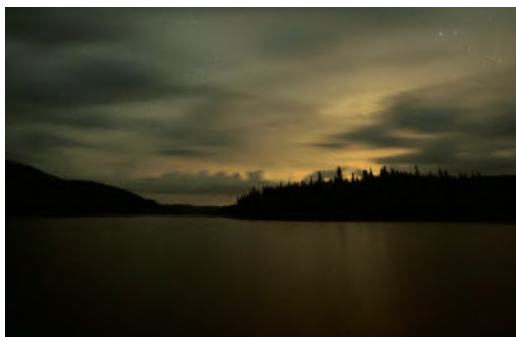
Children: free (accompanied by an adult)

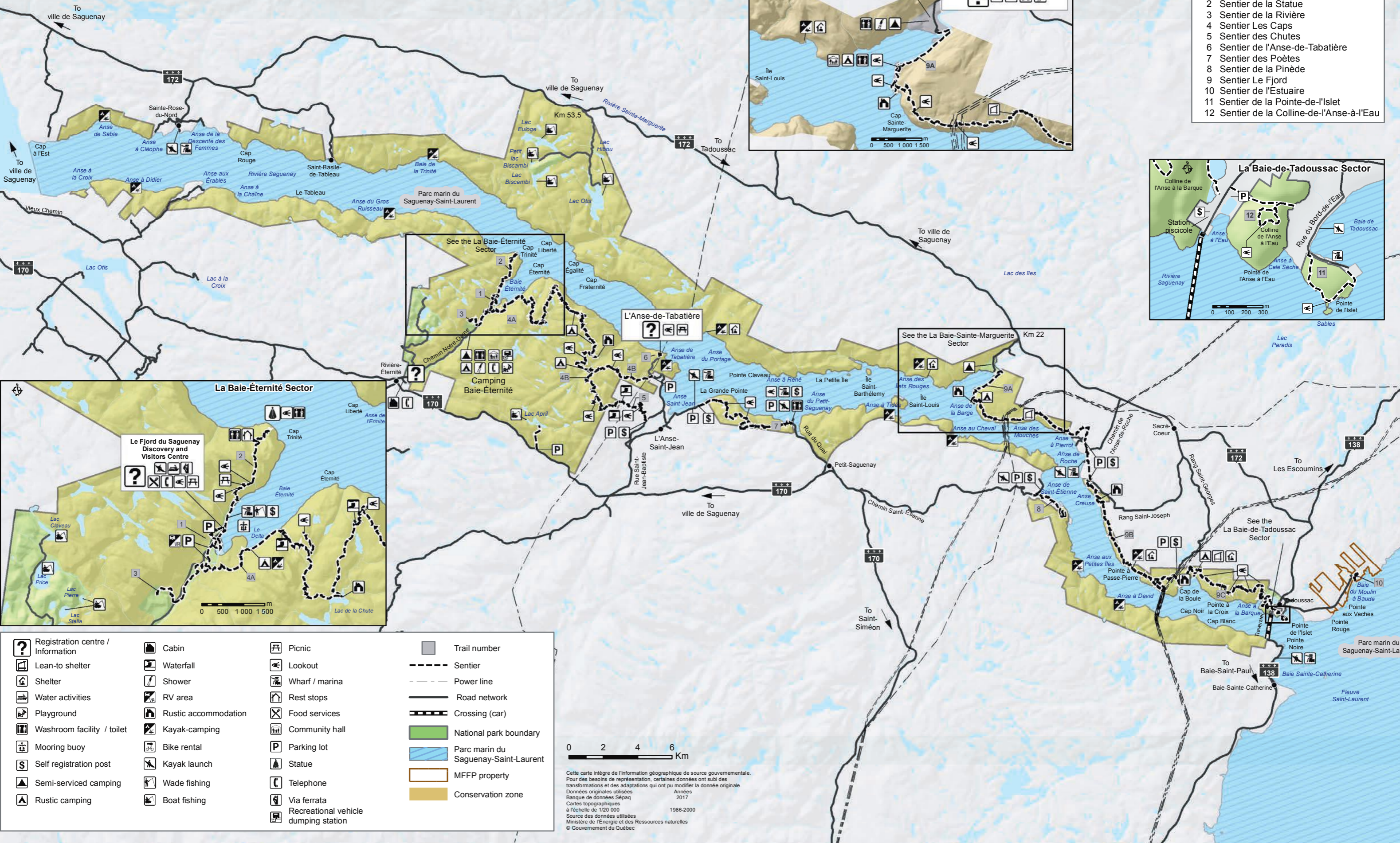
## LE PARCOURS DES AVENTURIERS

An all new self-guided tour is now available at the Le Bleuvert campgrounds. Travel back in time through the exciting adventures of Anadabijou, Louison and Alexandra. Fun for visitors of all ages.

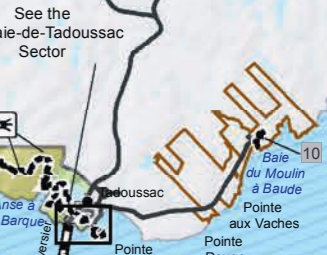
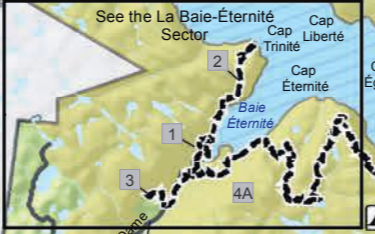
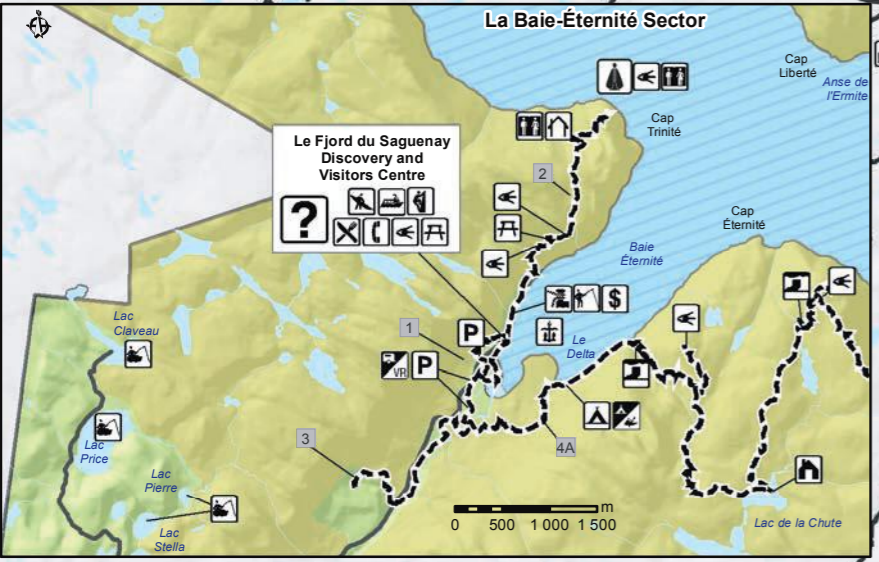
**Departure:** Washroom facility

**Rates:** Free

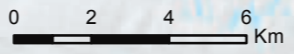




- Sentiers de randonnée pédestre**
- 1 Sentier des Méandres-à-Falaises
  - 2 Sentier de la Statue
  - 3 Sentier de la Rivière
  - 4 Sentier Les Caps
  - 5 Sentier des Chutes
  - 6 Sentier de l'Anse-de-Tabatière
  - 7 Sentier des Poètes
  - 8 Sentier de la Pinède
  - 9 Sentier Le Fjord
  - 10 Sentier de l'Estuaire
  - 11 Sentier de la Pointe-de-l'Islet
  - 12 Sentier de la Colline-de-l'Anse-à-l'Eau



Registration centre / Information	Cabin	Picnic	Trail number
Lean-to shelter	Waterfall	Lookout	Sentier
Shelter	Shower	Wharf / marina	Power line
Water activities	RV area	Rest stops	Road network
Playground	Rustic accommodation	Food services	Crossing (car)
Washroom facility / toilet	Kayak-camping	Community hall	National park boundary
Mooring buoy	Bike rental	Parking lot	Parc marin du Saguenay-Saint-Laurent
Self registration post	Kayak launch	Statue	MFFP property
Semi-serviced camping	Wade fishing	Telephone	Conservation zone
Rustic camping	Boat fishing	Via ferrata	
		Recreational vehicle dumping station	



Cette carte intègre de l'information géographique de source gouvernementale. Pour des besoins de représentation, certaines données ont subi des transformations et des adaptations qui ont pu modifier la donnée originale.

Données originales utilisées : Banque de données Sépaq, Cartes topographiques à l'échelle de 1/20 000, Source des données utilisées : Ministère de l'Énergie et des Ressources naturelles, © Gouvernement du Québec

Années : 2017, 1986-2000

# HIKING TRAILS

ON THE MAP

## TRAILS

ELEVATION  
(METRES)

LENGTH  
DURATION

ROUND TRIP

LOOP

DIFFICULTY  
LEVEL

## STARTING POINT

### BAIE-ÉTERNITÉ SECTOR

<b>1</b>	<b>Sentier des Méandres-à-Falaises</b>	30	1.6 km 45 - 60 min		X	F	Le Fjord du Saguenay Discovery and Visitors Centre
<b>2</b>	<b>Sentier de la Statue</b> • To the halte Bellevue lookout	230	3.6 km 2 h	X		I	Le Fjord du Saguenay Discovery and Visitors Centre
	• To the statue	280	7.6 km 3 - 4 h	X		ID	
<b>3</b>	<b>Sentier de la Rivière</b> • Along Éternité River from the campground to the bay	100	8.4 km 4 h	X		I	Le Fjord du Saguenay Discovery and Visitors Centre or Baie-Éternité campground, between sites 56 and 57.
<b>4a</b>	<b>Sentier Les Caps</b> • To the du Géant lookout	340	10.2 km 4 - 5 h	X		ID	Parking area P3
	• To Cap Éternité	360	18 km 9 h	X		D	

### L'ANSE-SAINT-JEAN SECTOR

<b>4b</b>	<b>Sentier Les Caps</b> • From Anse-de-Tabatière to Chemin Saint-Thomas, through Montagne Blanche and Sentier des Chutes <i>(Montagne Blanche area - Sentier des chutes is closed during hunting season)</i>	550	15 km 7 - 8 h		Oneway *	D	Chemin de l'Anse or chemin Saint-Thomas Nord
<b>5</b>	<b>Sentier des Chutes</b> • To the 1 <sup>st</sup> waterfall <i>(closed in the fall during hunting season)</i>	210	5 km 2 - 3 h	X		I	Chemin Saint-Thomas Nord
	• To Montagne Blanche <i>(closed in the fall during hunting season)</i>	550	13.8 km 6 - 7 h	X		D	
<b>6</b>	<b>Sentier de l'Anse-de-Tabatière</b> • Lookout over the Saguenay Fjord	10	0.5 km 10 min	X		F	Anse-de-Tabatière parking area
<b>7</b>	<b>Sentier des Poètes (Sentier Les Caps)</b> • From L'Anse-Saint-Jean to Petit-Saguenay	290	10 km 5 h		Oneway *	I	Rue Saint-Jean-Baptiste in L'Anse-Saint-Jean or rue du Quai in Petit-Saguenay

### PETIT-SAGUENAY SECTOR


<b>8</b>	<b>Sentier de la Pinède</b> • To the la Pinède lookout	120	8 km 3 h	X		I	Chemin Saint-Étienne parking
----------	--	-----	-------------	---	--	---	------------------------------

### BAIE-SAINTE-MARGUERITE SECTOR

<b>9a</b>	<b>Sentier Le Fjord</b> • From Discovery and Visitors Centre to Halte du Béluga lookout 	30	6 km 2 - 3 h	X		F	Le Béluga Discovery and Visitors Centre
	• From Discovery and Visitors Centre to Saint-Louis Island lookout	170	10 km 4 - 5 h	X		ID	Le Béluga Discovery and Visitors Centre
	• From Discovery and Visitors Centre to Anse-à-Pierrot parking area	240	13.6 km 6 - 7 h		Oneway *	D	Le Béluga Discovery and Visitors Centre or L'Anse-à-Pierrot parking
<b>9b</b>	<b>Sentier Le Fjord</b> • From Anse-Creuse to Cap de la Boule	170	13.2 km 7 - 8 h		Oneway *	D	Rang Saint-Joseph parking or lac de la Boule parking

### LA-BAIE-DE-TADOUSSAC SECTOR

<b>9c</b>	<b>Sentier Le Fjord</b> • From Tadoussac to Anse à la Barque viewpoint	30	3.6 km 1 h 30	X		F	Parking area across the fish farm (Route 138, near the ferry)
	• From Tadoussac to Anse à la Barque viewpoint on the hill	110	3.6 km 1 h 30	X		F	Parking area across the fish farm (Route 138, near the ferry)
	• From Tadoussac au point de vue du mont Adéla-Lessard	280	6.6 km 4 - 5 h	X		I	Parking area across the fish farm (Route 138, near the ferry)
	• From Tadoussac to cap de la Boule	280	11.7 km 6 - 7 h		Oneway *	D	Parking area across the fish farm (Route 138, near the ferry) or lac de la Boule parking
<b>10</b>	<b>Sentier de l'Estuaire</b> • Access to lookout overlooking the estuary	50	800 m 20 min	X		F	La Maison des Dunes Discovery and Visitors Centre
<b>11</b>	<b>Sentier de la Pointe-de-l'Islet</b> • Marine mammal observation site from land	10	800 m 20 min		X	F	Federal wharf of Tadoussac or municipal parking area
<b>12</b>	<b>Sentier de la Colline-de-l'Anse-à-l'Eau (sentier de La Coupe)</b>	40	1.1 km 45 min		X	F	Parking area across the fish farm (Route 138, near the ferry)

 - Accessible by bicycle F: Easy I: Moderate D: Difficult

\* Plan return trip by shuttle

## LONG-DISTANCE HIKING ALONG THE FJORD

Both shores of the fjord are bordered by long-distance hiking trails. Sentier Les Caps and Sentier Le Fjord trails both have shelter, primitive campground, lean-to facilities. Visit our Website for details and route suggestions.

TRAIL	Les Caps (south shore)	Le Fjord (north shore)
LENGTH	27 - 32 km, (difficult level) From Baie-Éternité to L'Anse-Saint-Jean	41.1 km (difficult level). From Baie-Sainte-Marguerite to Tadoussac
ENVIRONMENT	Forest	Woodlands along the fjord
SHUTTLE SERVICE	OrganisAction 418 579-8763	Ferme 5 Étoiles 418 236-4833 ou 1 877 236-4551

## THE PEREGRINE FALCON— ANIMAL EMBLEM

The Fjord's rocky escarpments are home to many peregrine falcon breeding couples (*Falco peregrinus*) of the *anatum* subspecies. The choice of this raptor as animal emblem therefore seemed self-evident. And while the species is still considered threatened in Quebec, protection measures seem to be bearing fruit. Here is a snapshot of the story...

### A STORY OF SUCCESS IN SUMMARY

Following major decline of the species, principally due to DDT, a restocking program was set up from 1976 to 1994, by which 255 falcons were set free in areas around the St. Lawrence Valley. Also, since 1970, province-wide inventories are carried out every five years. And while only a single and first couple was noted in 1980, no less than 108 breeding couples were counted in 2010! Every spring, the park wardens go in search of nesting sites along the fjord's shores. In 2016, nine sites have been declared within the park's boundaries. One more than in 2015 and a notable increase since 1990 when only when site was present! Keep an eye out during your stay and you might just see the peregrine falcon in its natural habitat!

Find out how to participate in the conservation of our national parks by visiting [parcsquebec.com/blogue](http://parcsquebec.com/blogue) (in French only).

Visit [fondsparcsquebec.com](http://fondsparcsquebec.com) (in French only) for more information on the specific initiatives and conservation efforts carried out in Québec's national parks.



# CONSERVATION

## A DEEP GASH IN THE EARTH FLOODED BY THE SEA

The formation of the Saguenay Fjord was finished during the fourth and last ice age, which ended about 10,000 years ago. Along the way, the sheer weight of the ice sheet, 3.2 to 4 km thick, sculpted the land and a chiselled a U-shaped valley.

You tasted the water of the Fjord and did not find it very salty? You are right! Fresh water, mainly from Lake Saint-Jean, flows along the surface. Salt water from the St. Lawrence Estuary flows underneath the fresh water layer and makes up 93% of the entire water volume. At the bottom of the Fjord, salinity reaches 31‰, nearly the same as the 35‰ found in the world's oceans. Also, the superimposition of the two layers is the reason why the surface water is not as cold as one would think, sometimes reaching 15-20 °C. In the depths however, the story is completely different, as water temperatures are as low as 1 °C!



## A FJORD THAT STANDS OUT ON THE WORLD STAGE!

Of the 2,130 known fjords around the world, only 38 are at least 100 km long. Stretching over 103 km from Tadoussac to Saint-Fulgence, the Saguenay Fjord stands among the planet's great fjords. It is also one of the rare fjords to flow into an estuary. But the Saguenay Fjord is remarkable for more than its length: its southern position also makes it unique. Indeed, the only fjord in Southern Quebec may also be the longest as such low latitude; and that in both the Northern and Southern Hemispheres.

### DID YOU KNOW...

The name "Saguenay" probably comes from the combination of two Amerindian words – *saga* and *nipi* – meaning "where the water flows out". This is, in essence, the most widely accepted hypothesis for the origin of the word, one of the oldest geographic names in Quebec.

### THE SAGUENAY FJORD IN NUMBERS\*!

Length: **103 km**

Width: **1.1 to 4.4 km**

Maximum depth: **270 m**

Sediment thickness: **Up to 900 m**

Maximum height of the surrounding capes: **460 m** (Baie-Éternité Sector)

Watershed : **78 000 km<sup>2</sup>**

\*Source: Locat, 2013.



# FAMILY FUN IS HERE!

Here are a few extras we have in place for you to simplify your life and to help you save money:

### For your children 17 years of age and under

**FREE ACCESS**  
to national parks

**ACTIVITIES**  
varied and rewarding

**EQUIPMENT LOAN\***  
for the Outdoors

**ACCESSORIES\***  
on loan for young children

\*Limited quantities available



Look out for this marker which identifies the ideal family experiences.

Discover our top family destinations at [sepaq.com/family](http://sepaq.com/family)

## OUR TOP PICKS

### AT PARC NATIONAL DU FJORD-DU-SAGUENAY

Take a look at our not-to-be-missed offers: popular activities, trails to discover with your family, and cosy spots for a stay.

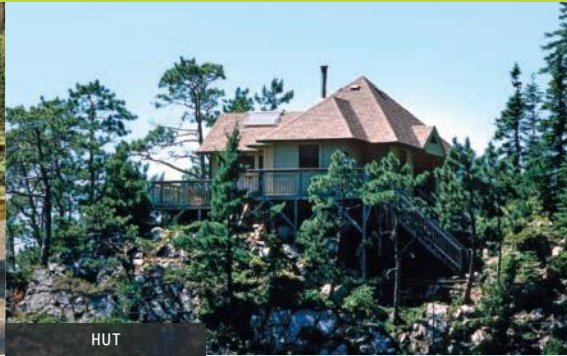
- Listen to the hooting owls, chatty bats and their nocturnal friends during the evening with the **Voyage au bout de la nuit!**
- A Rabaska ride with the kids? Fantastic! **Un commis voyageur à l'époque du rabaska** is the perfect discovery activity for the entire family.
- An easy stroll in the forest for little hikers: Take the **Méandres-à-Falaises** trail.
- The trail that leads to the **Halte du Béluga** is easily accessible for strollers due to its stone dust covered surface.



# ACCOMMODATION



HUTTOPIA TENT



HUT



CAMPING

## CABIN

Warm, fully equipped cottages for up to four guests.

Starting at  
**\$103** /night

## CAMPING

Camping for all tastes! You decide!

- Marked campsites with or without services, or primitive sites
- Kayak-camping and trek-camping
- Exclusive sites for touring cyclists
- RV camping

Starting at  
**\$24** /night

## HUT

Sleep in the heart of nature in community-type lodgings.

- Outdoor latrine, no running water

Starting at  
**\$28.25** /night /person

## READY-TO-CAMP

Simple lodgings where comfort and originality meet!

- Huttopia tent (for six guests, maximum four adults)

Starting at  
**\$102** /night

## LEAN-TO-SHELTER

A roof, a floor, and three walls... a taste of the great outdoors!

- Outdoor latrine, no running water

Starting at  
**\$12** /night /person



**PSSST!**

**CYCLISTS WELCOME**

For only  
**\$8** /night/person



## SUMMER FISHING

**ANGLERS, GRAB YOUR FISHING RODS!**

Anglers, grab your fishing rods! Five lakes open for brook trout fishing along both shores. The rates includes the rental of a rowboat. Refer to the main map for lake locations. Ensure to have your Québec fishing licence close at hand. All catches must be recorded. Your data is essential for maintaining sound management practices!

Starting at  
**\$61.40** /person

# PLAY <sup>IT</sup> SAFE



In the wild, your **safety** is your **responsibility**

Sépaq's mission is to ensure the widest possible access to Québec's most beautiful natural treasures. Sépaq is committed to the safety of its visitors and urges you to play it safe!

Preparing yourself adequately is the first step in the safe and enjoyable practice of your favourite activities. **YOU ARE RESPONSIBLE FOR YOUR OWN SAFETY** and risk management is an integral part of your experience.

Before leaving for an excursion, **MAKE SURE YOU HAVE THE SKILLS AND ABILITIES REQUIRED** to practice your chosen activity **AND RESPECT YOUR PHYSICAL LIMITS**. Your outing should leave you with nothing but pleasant memories. There are a number of organizations that can help you plan your activities safely. Do not hesitate to contact them. We also invite you to consult our safety guides for Sépaq activities on our website at [sepaq.com/security](http://sepaq.com/security).

## CHECKLIST

### BEFORE YOU LEAVE HOME

- Plan on going with at least one other person.
- Check the weather report.
- Pack water and food, even if the activity is only for a few hours.
- See that you have appropriate clothing and footwear for anticipated weather conditions.
- Let somebody know the exact location of your destination and the time you plan to return home.






### ONCE YOU ARE ON SITE

- Do not rely on your cellphone.
- Check how much time it will take to complete your activity.
- Obey signs and notices, including bans on open fires.

### WHEN YOU GET BACK

- Once you have completed your activity, make sure that you report to our staff anything wrong or any damage or problems you encountered.

## REMINDERS

-  During your visit to a national park, you must always carry your entry fee receipt or your annual entry card.
-  To preserve our natural riches, you are not allowed to remove any natural elements (animals, plants, dead wood, rocks, etc.). Please also keep to established hiking trails to avoid trampling flora.
-  Animals find all they need to eat in nature. Feeding wildlife can be very damaging. Keep food or garbage out of reach of animals.
-  We ask you to carry out all your garbage.
-  Domestic animals are not accepted in Québec's national parks. However, guide dogs and service dogs are admitted.

### PILOT PROJECT AUTHORIZING DOGS

A pilot project is in place, authorizing the presence of dogs in FRONTENAC (Saint-Daniel sector), JACQUES-CARTIER and OKA national parks, and will continue into its second year. Please read the applicable rules and authorized places at [sepaq.com/animals](http://sepaq.com/animals).

## IN CASE OF EMERGENCY: 911

**SÛRETÉ DU QUÉBEC: 310-4141** (general number) / \*4141 (for cellphones)

\*Where cellphone networks are available. The costs and expenses incurred in conducting search and rescue operations are the responsibility of the beneficiary. You can obtain protection against these risks from an insurer.

## Parc national du Fjord-du-Saguenay

91, rue Notre-Dame  
Rivière-Éternité, (Québec) G0V 1P0  
Information: 418 272-1556 or Reservation: 1 800 665-6527  
Fax: 418 272-3438  
E-mail: [parc.saguenay@sepaq.com](mailto:parc.saguenay@sepaq.com)  
[www.parcquebec.com/saguenay](http://www.parcquebec.com/saguenay)

Legal Deposit: 2017

Bibliothèque et Archives nationales du Québec

Photos: Borand Richard, Mathieu Dupuis, Marc Loïselle, Fabrice Tremblay, Claude P. Côté, François Fabianek, Jeff Grosse, Luc Rousseau, John Sylvester, Martial Tremblay, Steve Deschenes Organisation, Mathieu Tremblay (OOT) and Mathieu Charland.



*Ferme  
5 étoiles*  
CENTRE DE VACANCES

465, Route 172 West, Sacré-Coeur (Québec) G0T 1Y0

Telephone : 418 236-4833 | Toll free : 1 877 236-4551

[www.ferme5etoiles.com](http://www.ferme5etoiles.com)

Only 15 minutes from Tadoussac

**Accommodations - Activities - Restaurant**



## L'Anse-Saint-Jean

Fjord



en kayak

CANADIAN SIGNATURE  
**EXPERIENCE**  
CANADIENNE DISTINCTIVE



**Exclusive Family excursions  
from 2 hours for kids (3 years  
and over) and 3 hours for  
adults**

**2 hours to 1 day  
expeditions**

**Fjord cruises and sailing**

**1 to 4 day expeditions**

418 272-3024 • 1 866 725-2925 [www.fjordenkayak.ca](http://www.fjordenkayak.ca) | Open 7 days a week, from mid-May to early October



**VOILEMERCATOR**  
École homologuée FVO/ACY Depuis 1981



### INTRODUCTORY EXCURSIONS

- L'Anse-Saint-Jean  
Departures: 10:00, 13:45  
1 866 725-2925

### OVERNIGHT EXCURSIONS

- L'Anse-Saint-Jean &  
Baie-Éternité sector
- ½ day of sailing
- Dinner and breakfast included
- Overnight on board the sailboat
- 1 888 674-9309

[info@voilemercator.com](mailto:info@voilemercator.com)



Take part in the manoeuvres

**Navigate the  
Saguenay Fjord  
on board a Sailboat**



Families Welcome  
[voilemercator.com](http://voilemercator.com)

Close to the park:

## Rivière-Éternité

- International exhibition of Nativity Scenes  
Tel.: 418 608-8441
- Artists' Park with its collection of giant Nativity Scenes
- Auberge du Presbytère  
Tel.: 418 608-8890  
Restauration: Cantine de l'Auberge  
Tel.: 581 235-4558

Tel.: 418 272-2860

418, rue Principale, Rivière-Éternité QC  
[municipalite@riviere-eternite.com](mailto:municipalite@riviere-eternite.com)



# Navettes maritimes du

# FJORD

UNE DIVISION DE PROMOTION SAGUENAY

The fjord

Like you've **NEVER** seen it before...

New



**FJORD & WORLD  
CRUISE**

Go by boat,  
return by tourist bus

**Travel & discover**

By cruise or shuttle,  
on foot or by bicycle!



1 800 363-7248

[fjordshuttles.saguenay.ca](http://fjordshuttles.saguenay.ca)

Promotion  
Saguenay