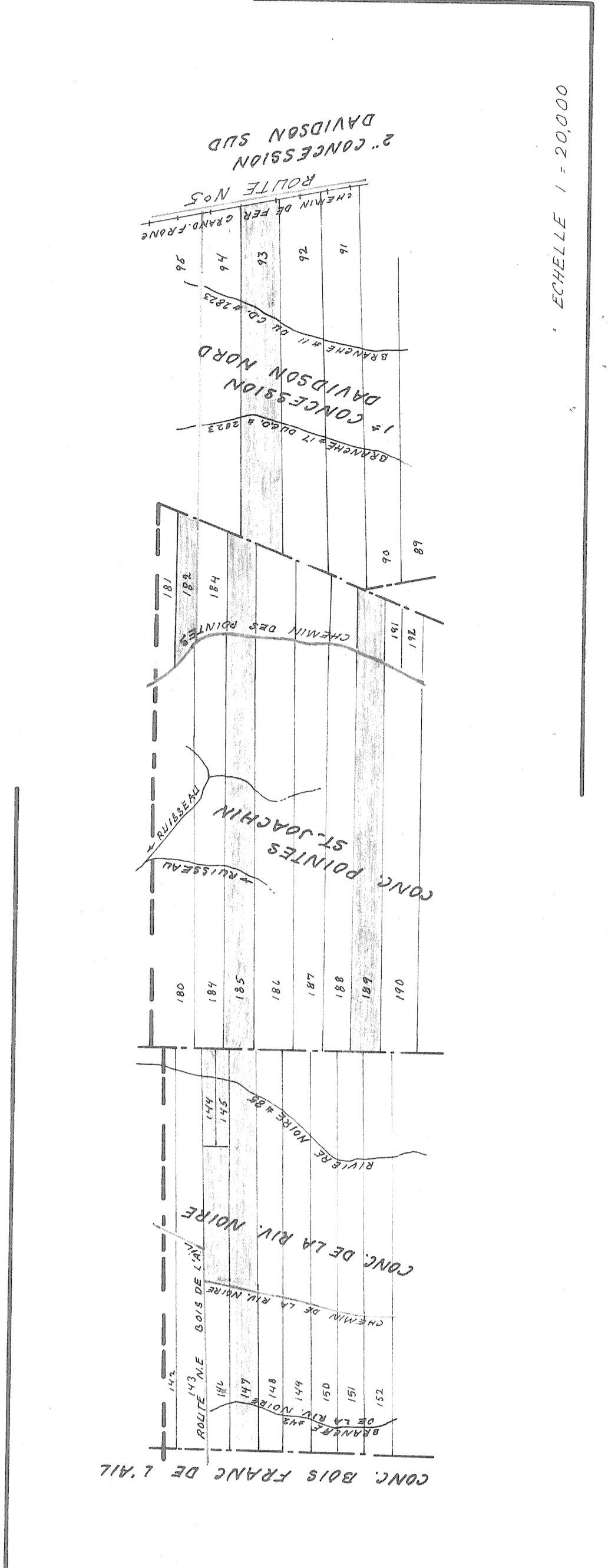


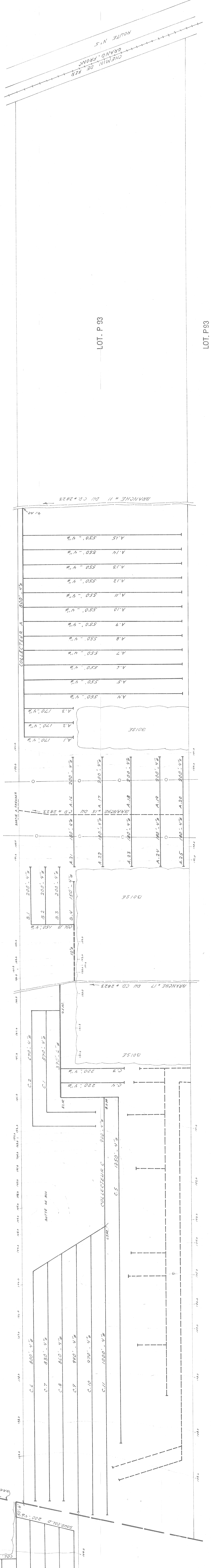
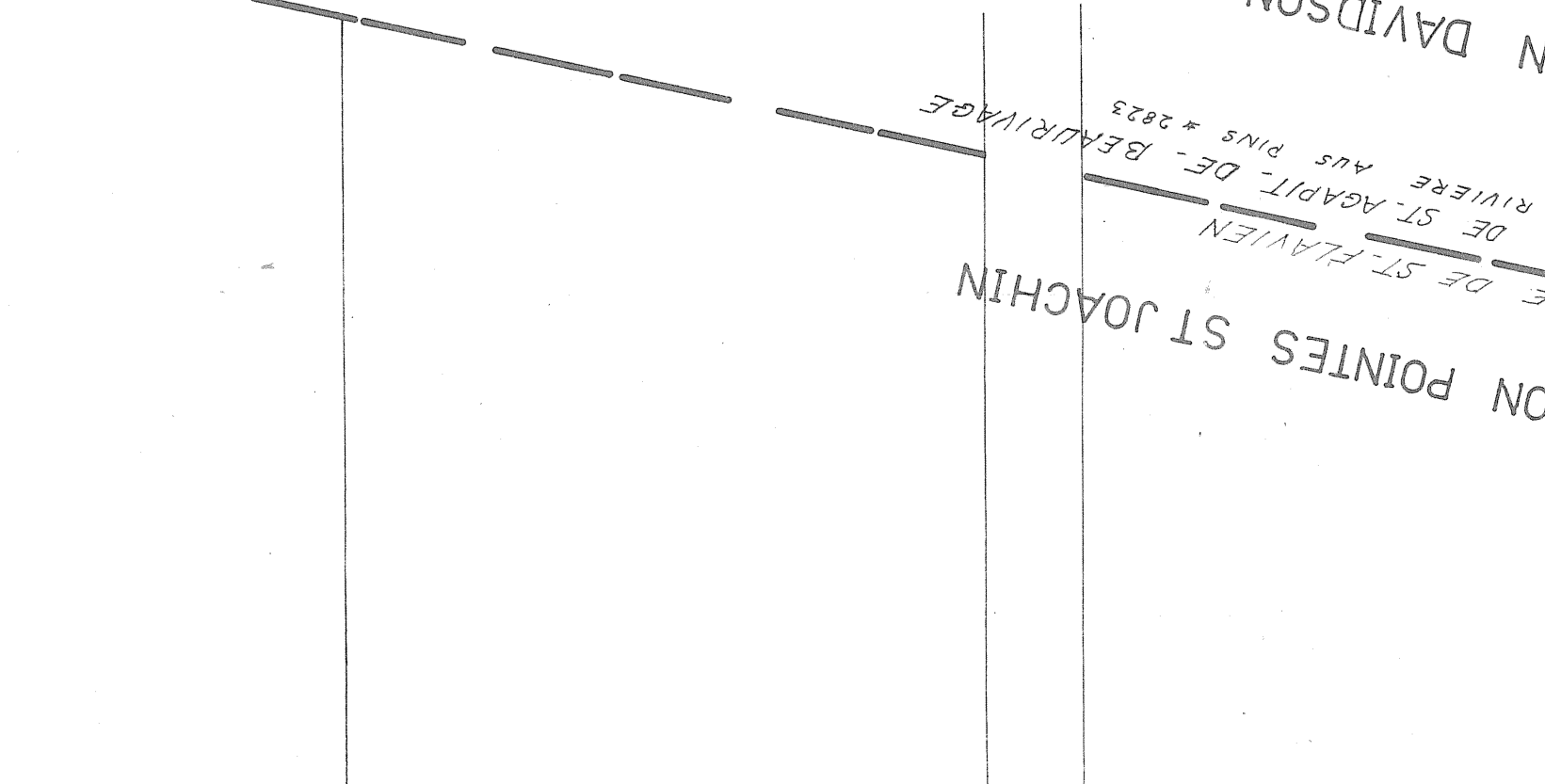
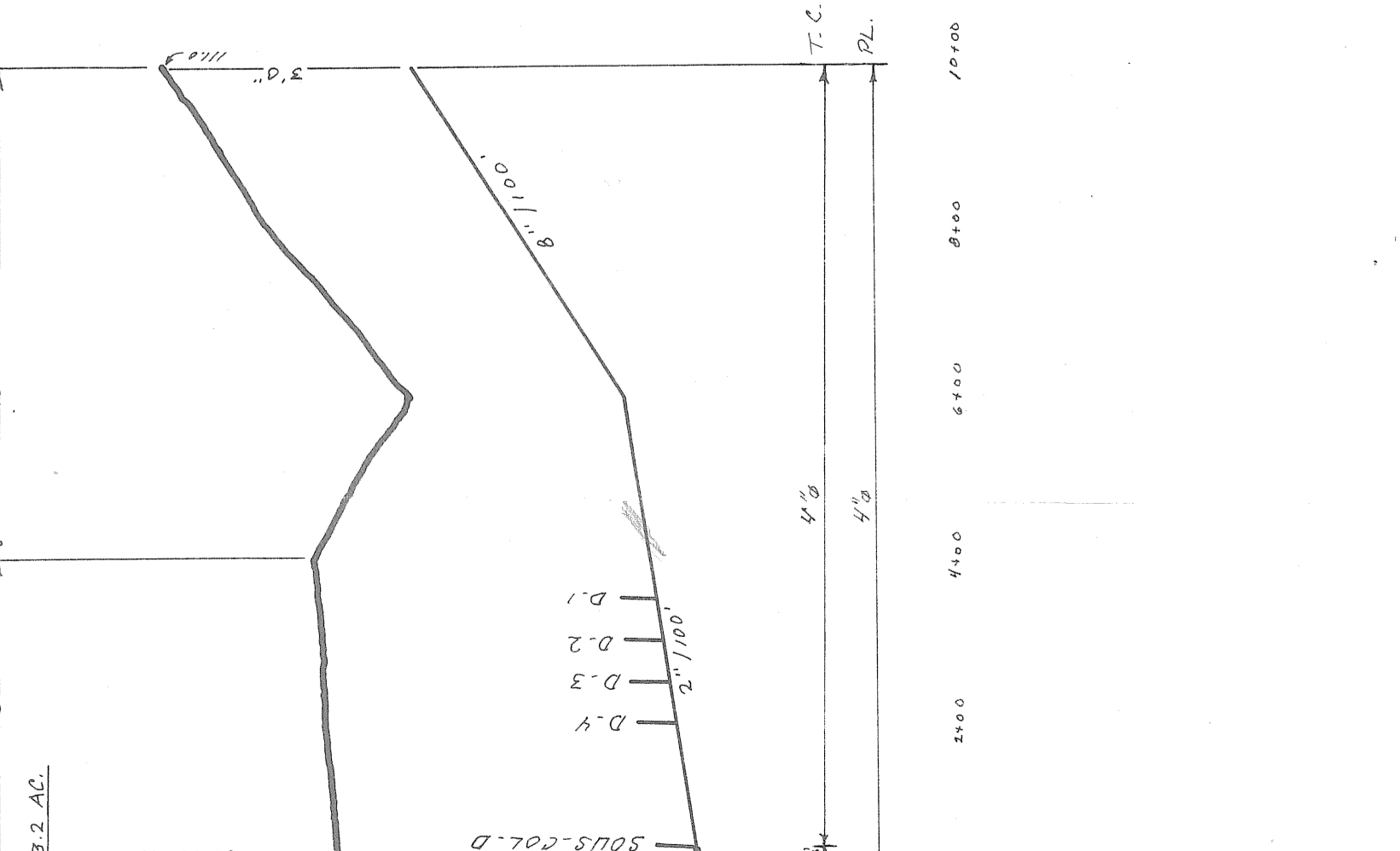
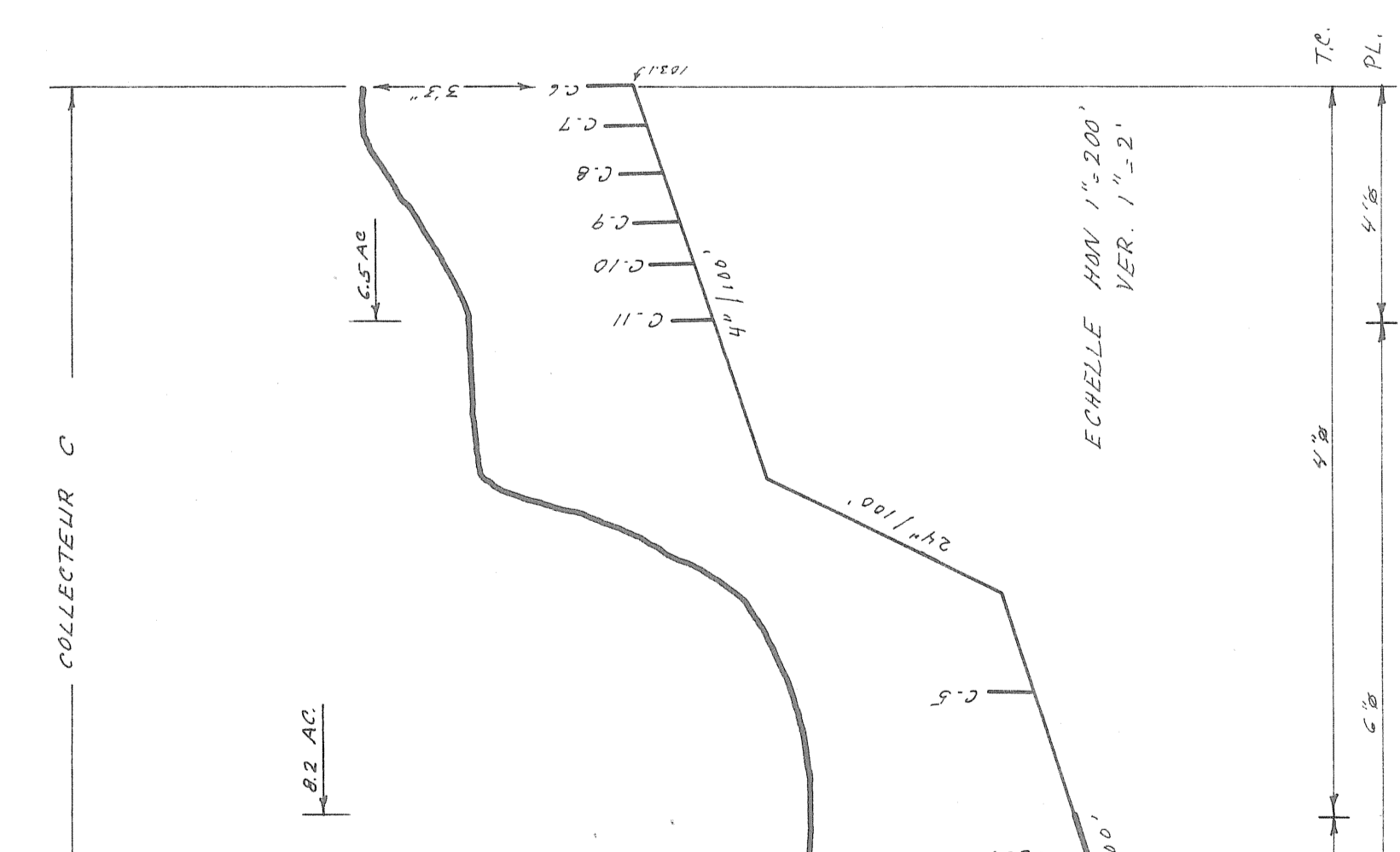
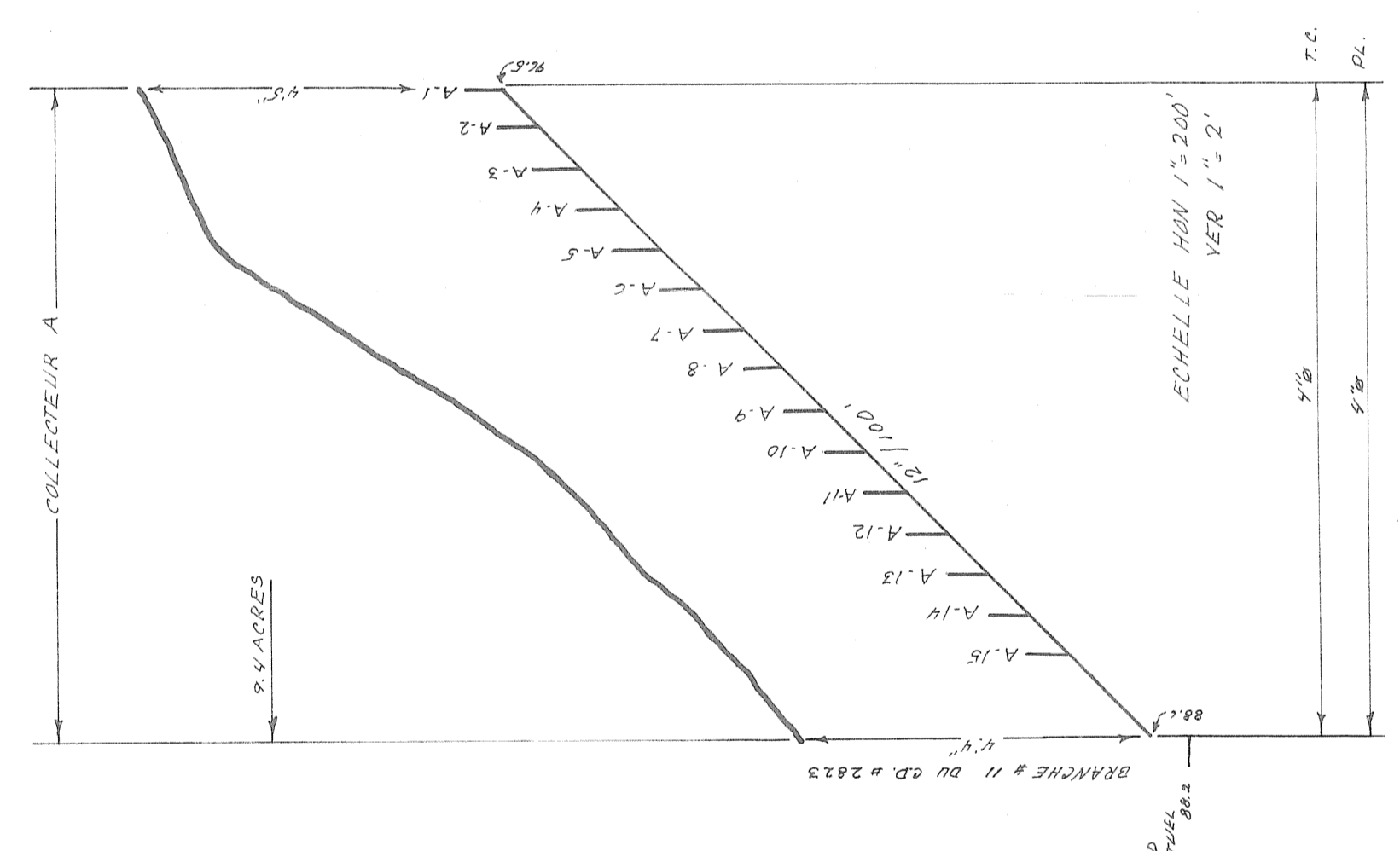
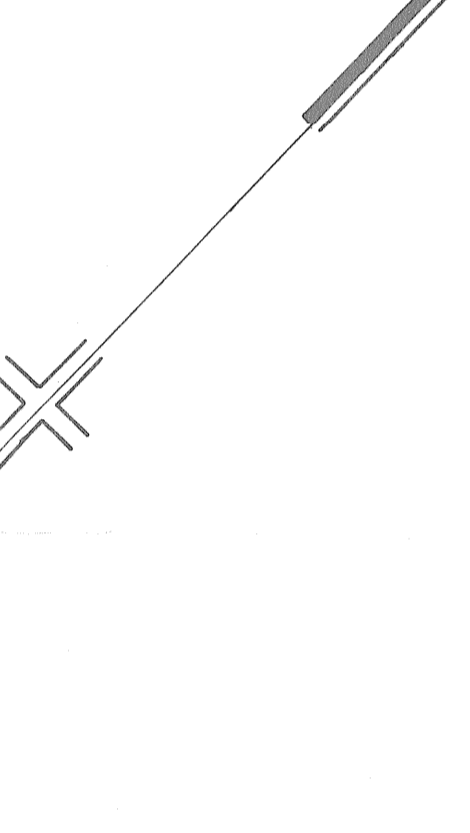
310
100
100
100
100

DESIGNATION	POTERIEZ		PAUVETTES (177)	
	DIAMETRE EN POUCES	LONGUEUR	DIAMETRE EN POUCES	LONGUEUR
COLLECTEUR A	8 1/2"	900'	8 1/2"	900'
B	8 1/2"	900'	8 1/2"	900'
C	8 1/2"	900'	8 1/2"	900'
D	8 1/2"	900'	8 1/2"	900'
E	8 1/2"	900'	8 1/2"	900'
F	8 1/2"	900'	8 1/2"	900'
G	8 1/2"	900'	8 1/2"	900'
H	8 1/2"	900'	8 1/2"	900'
I	8 1/2"	900'	8 1/2"	900'
J	8 1/2"	900'	8 1/2"	900'
K	8 1/2"	900'	8 1/2"	900'
L	8 1/2"	900'	8 1/2"	900'
M	8 1/2"	900'	8 1/2"	900'
N	8 1/2"	900'	8 1/2"	900'
O	8 1/2"	900'	8 1/2"	900'
P	8 1/2"	900'	8 1/2"	900'
Q	8 1/2"	900'	8 1/2"	900'
R	8 1/2"	900'	8 1/2"	900'
TOTAL	8 1/2"	3275'	8 1/2"	3275'
GRAVITEUR	1000'	1000'	1000'	1000'

PROFONDEUR MINIMUM DES DRAINIS 30"



ETHELLE 1:20000



LOT 96

LOT P 93

LOT P 93

HYDRAULIQUE AGRICOLE

Ministère de l'AGRICULTURE et de la COLONISATION

DRAINAGE SOUTERRAIN

GERARD RAYMOND BERGERON

FERME

MUNICIPALITÉ PAR ST-JOACHIM, COMTE L'ESPÉRANÇE

DISTRICT ELECTORAL LOTBINIERE

RELIEVE PAR M. LARLANDE

TRACÉ PAR S. JOHNSON

PREPARE PAR M. LARLANDE

REVISE PAR S. JOHNSON

PLAN No S-635

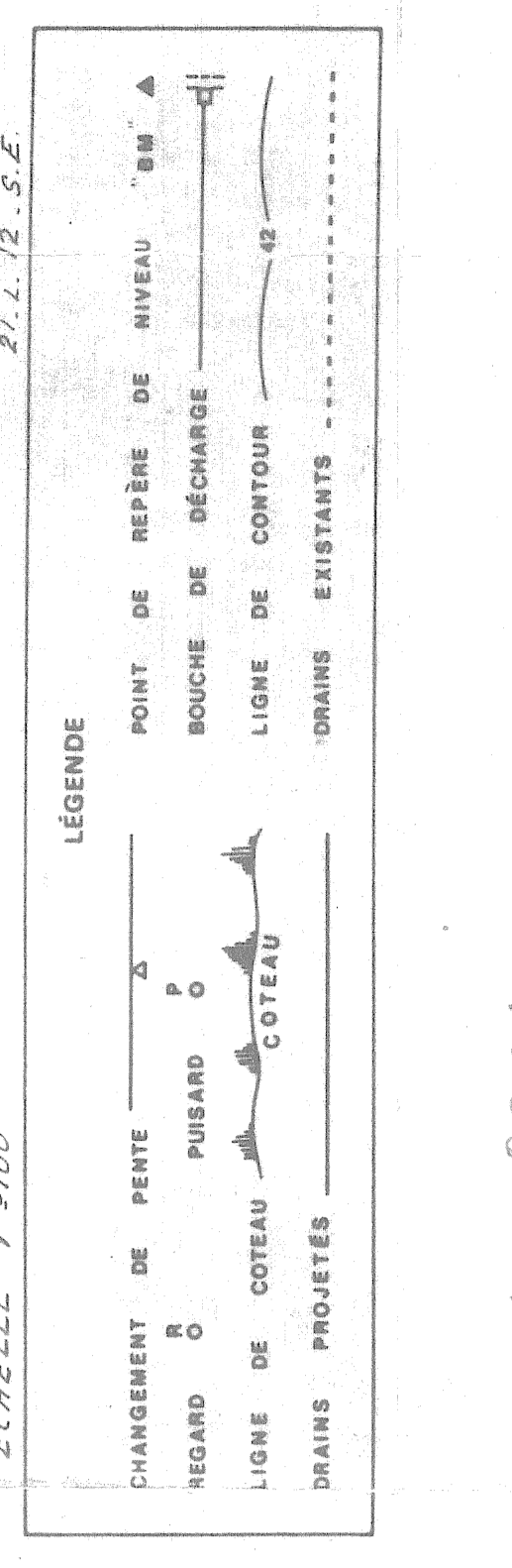
FEUILLE 1 DE 1

APPROUVE PAR

LE 15 JANV. 1934

Lot. n. 117 Jean Pierre Rousseau

33052 BERGERON GERARD RAYMOND



ETHELLE 1:1000

21-1-11-2-0

21-1-11-2-0

21-1-11-2-0

21-1-11-2-0

21-1-11-2-0

21-1-11-2-0

21-1-11-2-0

21-1-11-2-0

21-1-11-2-0