

Travel & Vacation



TOURISME
CANTONS-DE-L'EST

Brome County
NEWS 
— THE —
RECORD
Advertorial Supplement
June 1999

Maison KNOWLTON House Inc.

401 Knowlton Road, Knowlton, QC, J0E 1V0
Tel. (450) 242-1621

COMFORT SECURITY INTEGRITY

Knowlton House is an assisted living centre located a short distance from the centre of the beautiful and charming village of Knowlton.



Our modern facility was specifically designed and constructed to provide a **complete spectrum of health services**, whether it be minimal, convalescence or total personalized nursing care.

Both residents and family will appreciate the **security** in knowing that whatever may arise, another relocation would not be required.

Our services include:

- Guaranteed medical coverage by residence doctors
- Bilingual registered nurses provide 24-HOUR care
- **Specializing in Alzheimer care**
- Temporary, long-term or palliative care
- Convalescent care
- Physiotherapy
- Wander protection
- Daily activities program
- Podiatry
- Delicious balanced home-cooked meals
- Special dietary needs provided
- Hairdresser
- Dry cleaning service
- Personal laundry included
- 24-hour visiting hours
- Regular ecumenical church services

Our modern facility features:

- Nurse call system in each room
- Deluxe private and semi-private rooms
- Bathroom in each room
- Individually-controlled electric heat
- Elevator
- Cable TV
- Private telephones
- Large lounge on each floor with television & VCR
- Sun terraces
- Landscaped grounds with patio for outside activities

MARGARET KOEHN, Director of Nursing
JOHN GLOVER, President

VISITING THE REGION

The Eastern Townships

A captivating region lying some 80 kilometres to the east of Montreal and about 100 kilometres south of Quebec City, the Eastern Townships takes in some of the province's most picturesque countryside, as well as metropolitan Sherbrooke and Magog. It sprawls across 13,100 square kilometres of mountains, forests and rolling farmland, stretching from Granby, through Sutton to Lambton, and Lac-Mégantic. The Townships shares a 300-kilometre frontier with the United States – a geographic reality that makes locals very aware of how life is lived south of the border. The area is also a celebration of bicultural coexistence: a discreet anglo-saxon charm blended with "québécoise" joie de vivre!



RECORD FILES

Picturesque Townships country scenes create a sense of tranquility.

Les Cantons-de-l'Est

Cette captivante région touristique est à quelque 80 kilomètres à l'est de Montréal et à une centaine de kilomètres au sud de Québec. D'une superficie de 13 100 kilomètres carrés, elle s'étend de Granby – Sutton à Lambton – Lac-Mégantic, en passant par Sherbrooke et Magog-Orford. Ses 300 kilomètres de frontière lui confèrent la rare possibilité de vivre au quotidien une ouverture avec les États-Unis. Les Cantons-de-l'Est, c'est l'harmonie de deux richesses inestimables: le charme anglo-saxon et la joie de vivre québécoise!



BRUCE PATTON/RECORD CORRESPONDENT

Many towns in the region are home to important symbols of the past.

Brome County
NEWS



88 LAKESIDE, KNOWLTON, QUEBEC, J0E 1V0
TEL: (450) 242-1188 / 242-6892 FAX: (450) 243-5155

Published weekly by

THE
RECORD

257 QUEEN ST., LENNOXVILLE,
QUEBEC, J1M 1K7
FAX: (819) 569-3945 E-MAIL:
record@interlinx.qc.ca
website: www.sherbrookerecord.com

RANDY KINNEAR PUBLISHER 800 463-9525
SHARON McCULLY EDITOR/OFF. MGR. (450) 242-1188
ALISON STEEL SECRETARY (450) 242-1188
LYNDA BELLAVANCE ADVERTISING ... (450) 242-6892
PAULINE LAROCHELLE ADVERTISING ... (450) 242-6892
SUNIL MAHTANI CORRESP. EDITOR ... 800 463-9525
SUSAN MASTINE COMMUNITY RELAT. ... 800 463-9525
RICHARD LESSARD PROD. MGR. 800 463-9525
MARK GUILLETTE PRESS. SUPERV. ... 800 463-9525
FRANCINE THIBAUT PROD. SUPERV. ... 800 463-9525

CIRCULATION

Distributed to all Record subscribers every Wednesday as an insert, and to all households and businesses in Abercorn, Bedford, Brigham, Brome, Bromont, Cowansville, East Farnham, Foster, Fulford, Knowlton (Brome Lake), Sutton, Bolton Centre, West Brome.

SUBSCRIPTIONS

		GST	PST	TOTAL
CANADA: 1 YEAR	104.00	7.28	8.35	\$119.63
6 MONTHS	53.50	3.75	4.29	\$61.54
3 MONTHS	27.00	1.89	2.17	\$31.06

Out of Quebec residents do not include PST. Rates for other services available on request.

The Record is published daily Monday to Friday. Back copies of The Record ordered one week after publication are available at \$3.00 per copy prepaid.

The Record was founded on February 7, 1897, and acquired the Sherbrooke Examiner (est. 1879) in 1905 and the Sherbrooke Gazette (est. 1837) in 1908. The Record is published by Sun Media Corporation, a Quebecor company, having its head office at 333 King Street, Toronto (Ontario), M5A 3X5.

Canadian Publications Mail Service
Product Agreement No. 0479675.

Member

ABC, CARD, CDNA, NMB, QCNA



Treat yourself to a day trip

There's a wealth of Townships sites to explore

By Bev Smith
Special contributor

One of the best ways to explore the Townships is by taking day trips. There is a wealth of places, events, and activities to fit all tastes and interests. On your explorations, watch for some breathtaking scenery and historic architecture. Each of our communities has wonderful restaurants for either lunch or evening meals.

We sometimes overlook what we have in our own backyard. Visiting

The following suggestions do not include outdoor activities, regular festivals, special days or theatre productions. They are places that friends and I have found interesting. Use the suggestions as a guide and you too, will soon discover your own "hidden treasures"!

ASBESTOS REGION

* A guided bus tour of the asbestos mine can be arranged. Access via St. Luc Blvd., Asbestos. (819) 839-2911

ern Townships with hiking trails, picnic area, and children's games. (819) 828-3608

VALCOURT AREA

* The Bombardier Museum is a "must see" in Valcourt. Here is the largest private science and technology museum

in Quebec. (514) 532-5300

* South of Valcourt is Mines Cristal Kebec, 430 Rang 11, Bonsecours, which offers guided mine tours, and activities concerning crystals. (514) 535-6550

* In Maricourt, north of Valcourt is

CONTINUED ON NEXT PAGE



COURTESY: AUDREY FROST

Afternoon tea at Uplands Museum in Lennoxville - savour an old English tradition! The Colby-Curtis Museum in Stanstead also serves tea in the summer.

local sites is a great way to entertain visitors from other parts of the world, and your own friends and neighbours here!

It helps to have a somewhat clear idea of what you want to do for the day, but also ask host communities for information about their "hidden treasures". Gather information and maps, choose an area, make reservations if necessary, and set out to explore the wonderful attractions the Townships has to offer.

* At Burbank Pond, 150 Water St., Danville, there are 2 km of walking trails with a 290m footbridge leading to an observation deck where you should see lots of wildlife with a minimum of walking.

* Beautiful flower gardens await visitors at Kingsey Falls. Take Rte. 116N from Danville.

* The Welcome Center of Mt. Ham is at 103 Rte. 257W. There you will find one of the highest summits in the East-

Retirement living in the picturesque town of Knowlton



"A place to call home!"

<<Un endroit où il fait bon vivre>>

RÉSIDENCE POUR LES AINÉS / RETIREMENT RESIDENCE

Long or convalescent stays with
24 hr. nursing care

Deliciously prepared meals & social activities
to enjoy with a warm and caring personnel

Séjours convalescence ou de longue durée,
soins 24h sur 24

Repas délicieux, programme
d'activités et un personnel chaleureux



Denise, Stiles, Manager / Directrice
Kim Redmile, Activity Coordinator/coordonnatrice d'activités
28 Mount Echo, Knowlton, Québec (450) 242-4663

MEMBRE



PLACE PRIMEVÈRE



1973, Leclair

Waterloo

(450) 539-4897



You will feel right at home in the lounge

APARTMENTS FOR RETIRED PERSONS

- For autonomous and semi-autonomous persons
- Service by bilingual & qualified personnel
- Outstanding cuisine & housekeeping services
- Activities with our on staff social director

Privately owned and operated by
Mireille & Marc M. Bienvenu
Who reside on premises

Treat yourself to a day trip

CONTINUED FROM PAGE 3



BRUCE PATTON/COMMUNITY CORRESPONDENT

Underground tours of the former copper mine at the Capleton Mines in Hatley Township interest visitors of all ages. Mineral museums and mine tours are located in other parts of the Townships as well.

the recently opened Centre UFOland (1382 Rang 7) which is dedicated to the world of UFO's and extraterrestrials. (514) 532-OVNI
WATERLOO

At Safari Loowak in Waterloo, 475 Horizon Blvd., you will experience all season expeditions for all ages. There are both outdoor and indoor strategy sessions - Treasure Hunt, Mission Secret Code, Mission Amazon, etc. The Loowak Museum is on site. (514) 539-0501

WINDSOR AREA

* Discover the story of the oldest black powder plant in the province at Centre Culturel et Patrimonial La Poudrière, 342 St.

Hatley Township permits you to experience the underground of a 19th century copper mine when miners worked with picks, shovels, and candles. Even in summer wearing a warm sweater is recommended for the tour. In addition to tours, the site also offers a museum, trails, and boutique. (819) 346-9545

COMPTON

* The Louis S. St. Laurent National Historic Site, 6 Main St. S., features the life of Canada's prime minister from 1948-1957. The general store has reproductions of items sold at the beginning of this century. (819) 835-5448

MELBOURNE AREA

* Along the picturesque St. Francis River valley in Melbourne, the Richmond County Historical Society Museum, 1296 Rte.243, beckons with a wonderful collection of historic items and beautiful landscaped flower gardens. (819) 826-2303

* The Centre d'interprétation de l'ardoise (Slate Interpretation Centre), 5 Belmont St., Melbourne, provides a

Georges St., Windsor. At this centre, art, nature and history merge. (819) 845-5284

* A visit to Ferme Lune de Miel in Stoke, 252 Rang 3E provides visitors with everything you ever wanted to know about bees and their manufacture of honey. There is a huge observation hive into which visitors may enter. (819) 346-2558

SHERBROOKE AREA

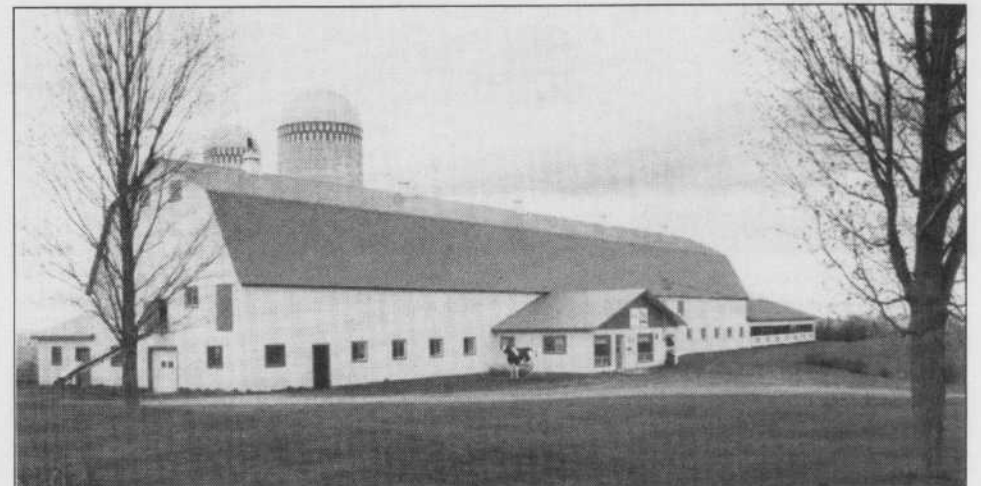
* A guided city tour of Sherbrooke reveals the history of certain streets, buildings and green spaces of our Queen City. Don't save this trip just for out of towners! (819) 562-4744

* When in Sherbrooke, be sure to visit the Park and Gardens of Domaine Howard, 1300 Portland Blvd., where you may also see the municipal greenhouses.

* Uplands Museum, 9 Speid St., Lennoxville, is a magnificent Neo-Georgian home in a picturesque setting. Historic thematic exhibitions are presented as well as art, craft, and photography shows. Traditional afternoon tea is served in July and August. (819) 564-0409

* The Capleton Mines, 800 Rte.108.

CONTINUED ON NEXT PAGE



BRUCE PATTON/COMMUNITY CORRESPONDENT

See how a dairy farm operates - Coaticook's Centre régionale d'initiatives et de formation en agriculture offers visits at no charge.

La Maison Verte
Broderie. Plaine, faite à la main
de un à deux brins.
Full embroidery hand made
from one to two strands.

SUZANNE RODRIGUE
4026 FOSTER C.P. 1799
WATERLOO, QUE JOE 2N0
(450) 539-0132
www.sunnymead.org/srodrigue

Galerie D'Arts



Gilles Nadeau
(450) 539-4334 Fax: (450) 539-5331
CANADA
770 Lakeside, Lac Brome (Quebec)

Manufacturers of:
DOCKS ON POSTS
DOCKS ON WHEELS
BOAT LIFTS
FLOATING DOCKS - RESIDENTIAL
FLOATING DOCKS - COMMERCIAL

E-Mail: estrie@citenet.net
Web site: www.citenet.net/quai.estrie

THE KNOWLTON PUB

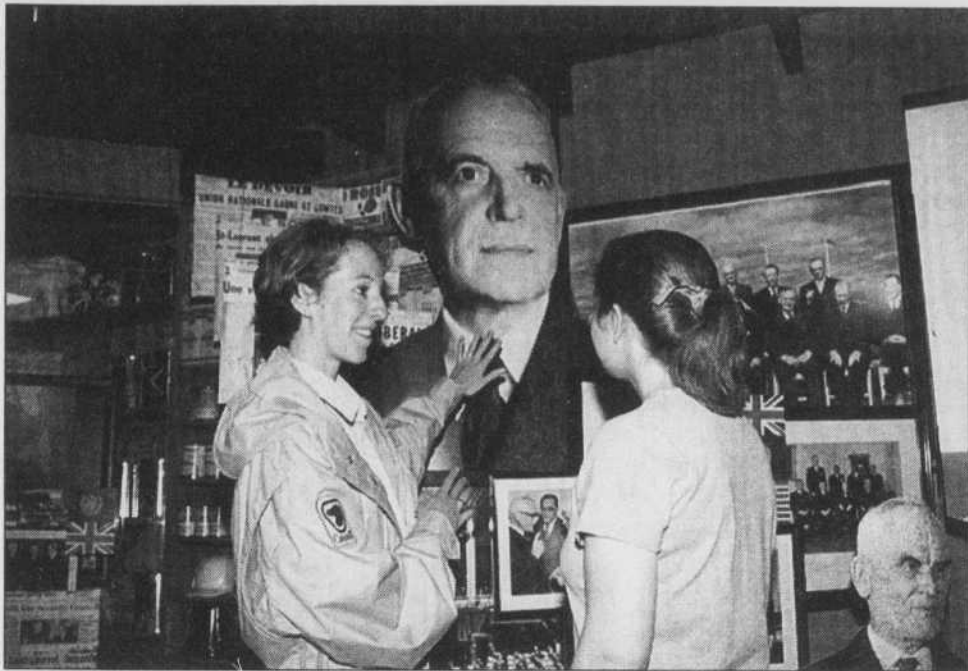
EVERY NIGHT OF THE WEEK

MONDAY SPAGHETTI \$2.99	MONDAY SPAGHETTI \$2.99
TUESDAY SALMON STEAK \$8.99	TUESDAY SALMON STEAK \$8.99
WEDNESDAY PEPPER STEAK \$5.99	WEDNESDAY PEPPER STEAK \$5.99
THURSDAY SURF AND TURF \$12.99	THURSDAY SURF AND TURF \$12.99
FRIDAY RIB STEAK \$10.95	FRIDAY RIB STEAK \$10.95
SATURDAY CHICKEN & RIBS \$9.99	SATURDAY CHICKEN & RIBS \$9.99
SUNDAY PRIME RIB \$13.99	SUNDAY PRIME RIB \$12.99

LIVE BANDS EVERY FRIDAY

267 Knowlton Road in
historic downtown Knowlton
Come as you are!
For reservations (514) 242-6862

There's a wealth of Townships sites to explore



BRUCE PATTON/COMMUNITY CORRESPONDENT

Historical museums, and attractions such as the Louis St-Laurent Historic Site pictured above, demonstrate the rich heritage of the Eastern Townships.

CONTINUED FROM PAGE 4

guided exhibition, including a video demonstration of slate cutting and heritage tours of Richmond and Melbourne. (819) 826-3313

* Just north of Melbourne is Moulin Blanchette (Blanchette's Mill), a restored woollen mill, 210 Porter Road, Ulverton. Here you will have the opportunity to walk along trails beside the Ulverton River, have a picnic, and take the guided tour of the only textile interpretation centre in Canada. (819) 826-3157

GRANBY AREA

* When did you last visit Granby Zoo? Located at 525 St. Hubert St., Granby, the zoo features a wide variety of mammals, exotic birds, reptiles, and amphibians in an inviting setting. There is lots of shade on a hot day and plenty of rest places. (450) 372-9113

* If you're looking for exotic birds, a trip to Zoo D'Oiseaux Exotiques is in order. At 2699 Rte. 139, Roxton Pond, you will find over 400 birds from all over the world. (450) 375-6118

* If you are seeking old or new "treas-

ures" the Flea Market in Bromont, 16 rue Lafontaine, is open on Sundays only. Wear a hat as it is located in an open area with little shade. (450) 243-0112

* For the sweet tooth, drop in at the Chocolate Museum at 679 rue Shefford, Bromont. Here you will be given a demonstration and presentation on chocolate making. (450) 534-3893

COATICOOK REGION

* In Coaticook, don't miss the spectacular natural wonder, the Coaticook Gorge, 135 Michaud St. /400 St. Marc St.. The gorge has

been created by the erosion of the Coaticook River. There are many things to do and see here. Enjoy the 169m high suspended bridge, the replica of an historic round barn, the covered bridge, observation towers, trails, and campground. (819) 849-2331

* There is free admission to the Fish Hatchery, 2469 Baldwin Barnston Road, Baldwin. Here you will find an indoor aquarium, a slide show, video, and outdoor ponds with 8 different species of fish. (819) 849-2739

* The dairy farm used for training students from the local centre for agriculture is at 129 rue Morgan, Coaticook. This is open all year round and here you can see the workings of a dairy farm. There is no admission, but reservations are necessary. (819) 849-9293

THETFORD AREA

* The town of Thetford Mines owes its beginnings to the discovery of asbestos. Therefore, you may want to take a mine tour in a Labmobile to explore the underground of the large open pit

asbestos mine at 682 Mofette N., Thetford Mines. (418) 335-7141

* The Musée minéralogique et minier de Thetford Mines, 711 Blvd. Smith S., shows you the history of asbestos and various mining-related topics. (418) 335-2123

* St.Jacques de Leeds and Kinnear's Mills, although small villages, are noted for their numerous splendid churches dating back to the 1800's. Heritage Kinnear's Mills gives free guided walking tours daily throughout the summer leaving from the Methodist Church.

* In Inverness, there is the Bronze Econo museum at 1750 rue Dublin where the visitor will learn about the history of bronze and bronze working techniques. (418) 453-2101

This is only a sampling of places to visit and explore. I'm sure we all have our favourite day trips. Let's spread the word about our own "hidden treasures" and really get to know other parts of the Townships!

Bev Smith is an active, retired teacher living in Melbourne. she likes to explore new territories and rediscover old favourite spots.



DAVID ANDERSON/COMMUNITY CORRESPONDENT

STUDIO TOUR



July 17 - 25, 1999, 10 am - 5 pm

39 artists in the Sutton, Mansonville and Knowlton area, invite you to come and visit their studios, see demonstrations and talk about their art.

Flyers with map available at:

Sutton Tourist Bureau, TownHall, 1-800-565-8455
Reilly House, Mansonville, Knowlton Tourist Bureau,
Brome County Historical Museum, Knowlton
Info Touristique, Exit 68, autoroute 10
Centre Info-Arts Bell, Place des arts
The Gazette, 250 St-Antoine W. Montreal

www.acbm.qc.ca/tour-des-arts

Théâtre Lac Brome

1999 REPERTORY SEASON JUNE 25 - AUG. 14

Always... Patsy Cline

Written by Ted Swindly. Based on a true story. The music of Patsy Cline presented in the form of a Country Swing musical revue.

Presented by
du Maurier
ARTS

Loot

by Joe Orton. A classic play of British wit, a wild comic adventure.

The Impromptu of Outremont

by Michel Tremblay. Translated by John Van Buren. A comedy of manners, a bourgeois drama about culture and the theatre.

Presented by
Hydro
Québec

Season Sponsor

Only 60 minutes East of Champlain Bridge.

ROYAL BANK
FINANCIAL GROUP

(450) 242-1395

Uplands

built 1862



A gracious home
surrounded by woods and gardens.

Museum
and Cultural Centre
featuring local history,
artists and craftspeople

July 2 - Sept. 5
Afternoon Tea

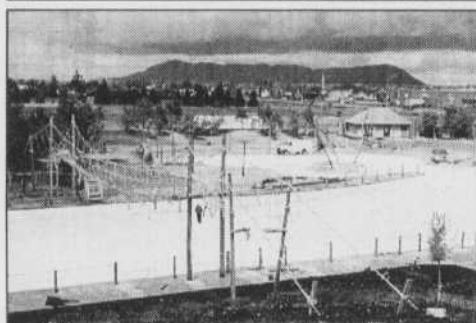
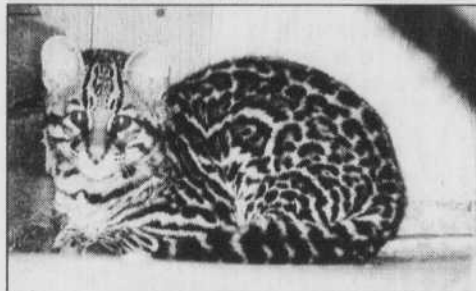
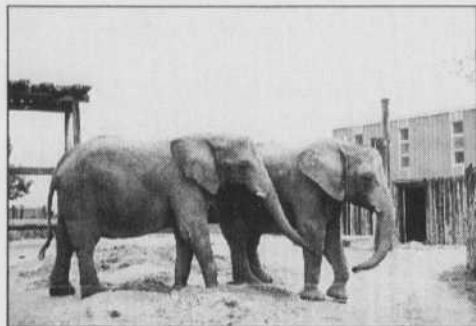
Tues. - Fri. & Sun. 3 - 4:30 p.m.

Open daily during
the summer (except Mondays)
Limited winter hours

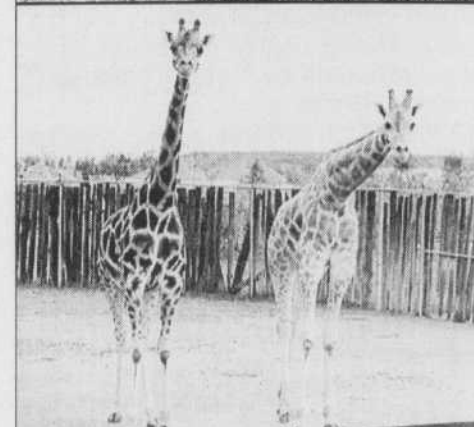
9 Speid Street, Lennoxville,
Quebec (819) 564-0409
www.uplands.qc.ca

GRANBY ZOO

Visit traditional and new attractions



Granby Zoo features a wide variety of animals - from wrinkly-skinned elephants and long-necked giraffes to a baby ocelot and exotic birds. New this year are a Wave Park, the biggest in Quebec (bottom left photo taken during final construction days) and an Inflatable Tube Ride that takes visitors through a safari-type park with a crashed airplane.



PHOTOS DAVID ANDERSON/COMMUNITY CORRESPONDENT





REMORQUES
La Chevauchée

BUY • SALES
EXCHANGE • RENT

(450) 375-2203
LARGEST INVENTORY IN CANADA
1546 PRINCIPALE, RTE 112, GRANBY, QC

L'Été en musique à Granby vous offre 28 spectacles dans les parcs - les Midi-Jazzées, les Jeudis Blues, Sons et brioche endimanchées, et les Dimanches en Harmonie. ...C'est gratuit! Informations: (450) 375-4661

Visiting the Townships?
Welcome to our beautiful area!
While you're here, pick up a copy of

THE **RECORD**

the Eastern Townships' only daily English newspaper.

Ask for **THE RECORD** at the nearest newsstand.

ROYAL BANK FINANCIAL GROUP

Presents: **Summer Theatre 34th season**

JULY 1 - 17
The Nerd by Larry Shue
Presented by: **du Maurier ARTS**

JULY 22 - AUGUST 7
Same Time Next Year by Bernard Slade
Sponsored by: **POWER CORPORATION OF CANADA**

AUGUST 12 - 28
The Compleat Works of Wllm Shksp (abridged) by A. Long, D. Singer & J. Winfield
Sponsored by: **THE SCOWEN FOUNDATION** **ALCAN**

SEPTEMBER 2 - 5
"Tonight... Piaf" by Joëlle Rabu & Ted Galay
Quebec's longest running English theatre!

• Emily LeBaron Art Gallery
• The Posh Pig Restaurant

NORTH HATLEY (819) 842-2431

LE CAFE FLORAL
Café-resto-terrasse

LE CAFE FLORAL

Assorted Daily Luncheon Specials inc. Vegetarian Dish
Special Weekend Breakfasts 9 a.m. to 11 a.m.

Open 7 days
9 a.m. to 5 p.m. week days
9 a.m. to 6 p.m. weekends

30 ch. Lakeside Knowlton, Québec
450-243-0792

VISITING THE REGION

Lac Brome (Knowlton) pop. 5048

The Town of Brome Lake groups seven municipalities around Brome Lake (20 km): (Knowlton, West Brome, Foster, Fulford, Iron Hill, Bondville and East Hill). In summer, the focus of activities is the lake and related water sports, with a lively summer theatre in town. In winter, ice fishing is popular, as is skiing at Glen Mountain.

The heart of the area is found in the elegant Victorian village of Knowlton, known for its Loyalist heritage and

British flavour, and for the quality and originality of its restaurants, gift, craft and antique shops. The waterfall in the centre of town, Coldbrook Park provides visual interest and a pleasant place for hikers and passers by to enjoy. The way to discover the delights of Knowlton is to follow the walking tour, Health spa.

One of the local palate treasures is the Brome Lake duckling, celebrated in the fall at the Brome Lake Duckling Festival. In addition to activities related to the pleasures of the table are many related to crafts and the arts.

Magog-Orford pop. 19 560

Les nombreux attraits que compte la station touristique Magog-Orford en font un lieu de vacances incomparable. Dans un rayon de quelques kilomètres, on y retrouve le prestigieux lac Memphrémagog, dont les eaux s'étendent jusqu'au Vermont (États-Unis) sur une distance de 44,5 km, le Parc du Mont-Orford, vaste espace naturel faisant partie du réseau des parcs du Québec où l'on pratique la randonnée pédestre, le ski de randonnée et le ski alpin (mont Orford), et qui abrite le Centre d'Arts Orford. L'été, à Magog-Orford, on peut pratiquer le nautisme, la baignade, l'équitation, le tennis, le golf et le vélo. Lors de vos activités nautiques au lac Memphrémagog, vous pourriez même faire la rencontre de Memphré, une créature fabuleuse qui a fait la renommée du lac depuis 1798 (Information: (819) 843-1212). Pour découvrir la région, empruntez la piste cyclable reliant les trois municipalités composant la région touristique Magog-Orford ou montez à bord d'un bateau de croisière d'où vous pourrez apprécier l'immensité du lac

Memphrémagog. En hiver, la piste polyvalente se transforme en sentier de ski de randonnée, alors qu'un sentier glacé de 2,5 km est aménagé en bordure du lac pour le patinage. Et que dire d'une promenade au parc de la Baie-de-Magog à l'heure où le soleil se couche.

Non seulement les activités récréatives et sportives abondent douze mois par année à Magog-Orford, mais toute une vie culturelle entraîne les visiteurs à travers spectacles, galeries d'art et festivals. En été, la Traversée interna-

CONTINUED ON NEXT PAGE



RECORD FILES

Lakes, rivers, mountains and rolling hills make the Eastern Townships an ideal vacation destination.

*Tour the Townships.
You won't be
disappointed.*



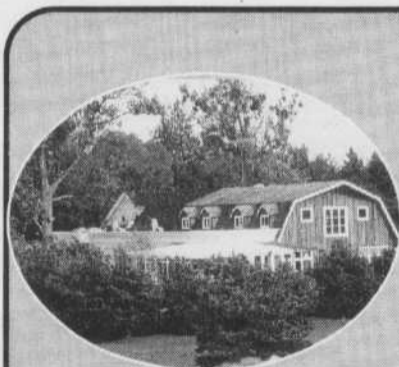
Denis Meunier
Funeral Home and Chapel
Serving all faiths.

Independently owned & operated

Compare before you decide.

Denis Meunier Robert Farnam
"Gala Excellence Award 1999"

402, Rivière, Cowansville (450) 266-6061



**AUBERGE
WEST BROME**

Golf Packages
from
\$116.75
p.p., dble occ.

Ideal corporate retreat or dream location for a special occasion up to 150-200 people. Main banquet room with outdoor covered terrace.

- Deluxe rooms with kitchen, balcony and fireplace.
- Suites with whirlpool bath.

1-888-902-7663

128 Route 139
West Brome, Qc J0E 2P0
Web: <http://cclacbrome.qc.ca/awb>
E-Mail: awb@cclacbrome.qc.ca



**JET
BLAST**

Custom
designed for
your mirrors
and glass

Speciality: •Glass showers •Mirrored glass

VAST SHOWROOM

Doors — Windows • Sales & Service

We repair • Aluminum & Wood windows & screens
• Store-Front • Insulated Glass



**HARDWARE FOR ALL
DOORS &
WINDOWS**

1865 Sherbrooke St., Magog (819) 843-2098

24 HR. EMERGENCY SERVICE

VISITING THE REGION

CONTINUED FROM PAGE 7

tionale du lac Memphrémagog et le Festival Orford sont des événements fort populaires, tandis qu'à l'automne, on se donne rendez-vous à la Flambée des couleurs et à la Fête des vendanges.

Au centre-ville de Magog foisonne la vie sociale et culturelle de la station. Le célèbre Vieux Clocher de Magog, les boutiques et galeries d'art, les bars et restaurants offrant toutes les spécialités culinaires convient les vacanciers à vivre pleinement leur séjour.

Le Vignoble Le Cep d'Argent, lauréat de plusieurs prix de reconnaissance, saura choyer les amateurs de bons vins. Des visites guidées y sont aussi offertes. (1257, ch. de la Rivière, Canton de Magog, (819) 864-4441).

Par ailleurs, la ville de Magog recèle de trésors d'histoire et d'architecture remontant parfois jusqu'à 1799, année où Ralph Merry III (reconnu comme le fondateur de Magog) s'installe à proximité du pont reliant les deux parties de la rue qui porte aujourd'hui son nom. En ce qui a trait au patrimoine ar-

chitectural, la rue des Pins se démarque par ses styles variés datant surtout du XIXe siècle.

Parc du Mont-Orford

Station touristique du mont Orford
C.P. 10, Magog-Orford J1X 3W7 (819) 843-6548, 1-800-567-2772 Mtl: (514) 878-1411

La Station touristique du mont Orford possède l'un des plus hauts dénivelés (540 m) dans l'est du Canada. Composé de trois impressionnantes montagnes, le mont Orford offre plus de 43 km de pistes réparties sur ses quatre versants dont 80% de la surface skiable est enneigée artificiellement. Aux sommets d'Orford, de Giroux ou d'Alfred-Desrochers, se dessinent sous vos yeux des scènes de montagnes, de lacs et de grands espaces, et à vos pieds vous attendent des acres et des acres de surfaces skiables bien entretenues sur 52 pistes dont certaines en sous-bois. Quelques avantages et services de la station: tarification de ski à la journée et à la demi-journée, billet de ski familial, ski gratuit pour les 5 ans et moins et les

70 ans et plus, parc de planche à neige, garderie-neige pour les 2 ans et plus. Glissades sur tube de 650 m de long, accessibles en arbalète.

Durant l'été, le télésiège panoramique vous permet d'accéder au sommet d'Orford pour observer, photographier, pique-niquer ou tout simplement respirer le grand air de la montagne. Les adeptes de la randonnée pédestre sont choyés, non seule-



RECORD FILES

Cycling events from tours to champion races take place throughout the summer.

ment durant l'été mais aussi à l'automne, par ce bain de nature et de couleurs flamboyantes en montagne et par un sentier de maîtres-randonneurs de 11 km partant du sommet d'Orford: le Sentier des Crêtes.

En plus, à la Station touristique du mont Orford, on retrouve le parcours du Golf Mont Orford, renommé pour son caractère de type écossais et ses points de vue exceptionnels, et ce, sans parler du défi de ses 18 trous!

Centre d'Arts Orford

3165, chemin du Parc, Canton d'Orford J1X 3W3 (819) 843-3981, 1-800-567-6155

De renommée internationale, le Centre d'Arts Orford cumule près de 50 ans d'expérience musicale. Ses objectifs sont le développement et la formation des jeunes musiciens particulièrement doués qui sont soit en fin d'études ou en début de carrière. Cette formation prend la forme de stages de perfectionnement qui ont lieu au cours des mois d'été et poursuit une tradition bien engagée de lieu de formation d'envergure internationale. De plus, le Centre d'Arts, comme diffuseur de grande musique or-

ganise parallèlement à ces stages, le Festival Orford, un événement culturel majeur au Québec, tant par la qualité de ses quelque 35 concerts que par celle de ses expositions d'arts visuels. Dans cet environnement naturel exceptionnel, l'Auberge La Grande Fugue, membre du réseau Hostelling International, propose à la famille et aux visiteurs de passage, l'ambiance incomparable d'un lieu où cohabitent détente, nature et musique.


Sutton pop. 3209

The earliest settlers arrived at Sutton, one of the best known areas in the Eastern Townships, set in the heart of the mountains, around 1793. A fire at the end of the 19th century, which destroyed the main street, left little trace of the existence of these first citizens. The town's architecture is worth a look; go along Principale and up Maple and Pleasant Streets to see some of the interesting houses.

In Sutton, the pace is relaxed, in keeping with the outdoor lifestyle and

CONTINUED ON NEXT PAGE

ZOO





**UNIQUE
IN
QUEBEC**

Along a 1 km landscaped pathway admire over 450 flamboyant birds divided into 125 varieties.

**2699, Route 139
Roxton Pond
Tel.: 450-375-6118**

**D'OISEAUX
EXOTIQUES**
EXOTIC BIRDS

A PEACEFUL PARADISE ★ ★ ★ ★

- * 38 cosy rooms and suites, each tastefully decorated in bright and sunny colours.
- * 6 km. from Knowlton, (shopping, antique)
- * Refined French cuisine
- * Interior pool and sauna
- * Outdoor sporting activities at proximity, Golf, swimming, windsurfing, cycling trail, Canoeing, fishing, horseback riding, etc.
- * Meeting rooms up to 100 participants
- * Many packages available

**572, chemin Lakeside, Lac Brome
Autoroute 10, exit 90, 5 km from the exit
Rte 243 south. Reservations: 1-888-922-0404**



BOUTIQUES, SERVICES AND RESTAURANTS

The Shopping Center in the ♥ of Cowansville

More than 35 boutiques, services and restaurants

175 Principale, Cowansville (450) 266-5427

VISITING THE REGION

CONTINUED FROM PAGE 8

resort character of the town. Over the years, Sutton has acquired an enviable reputation as a mountain centre. The beautiful Sutton Mountains and the different cultural communities give the town a very European flair. The region is also known for the excellence of its restaurants and charming country inns.

You will find everything you could want in Sutton: downhill skiing, groomed and sign-posted cross-country ski trails, some 75 km of bicycle-friendly country roads and a bike path linking Sutton to the US border, and a golf course surrounded by mountains.

Sutton also offers, under the watchful eye of Sentiers Sutton, 60 km of superb, groomed and patrolled hiking trails, with 3 rustic camp-sites and nature observation look-outs. In winter, 20 km of trail are open for snow-shoeing. A unique experience can be had in summer: a llama trail ride along the paths of Sutton nature park or a weekend excursion. Visits to the llama farm can also be arranged. Information: (450) 538-5521. Also available is a challenging hike of the region with the experienced

team from Station de Montagne au Diable Vert. Information: (450) 538-5639; 1-888-779-9090.

Among other entertaining possibilities: René Henquin's Chocolaterie (8 Principale South, (450) 538-0139) and the Heritage Sutton Museum (30A Principale South, (450) 538-2544) which highlights local history and the world of communications. Health Spa.

Mont Sutton inc.

P.O. Box 280, Sutton, JOE 2K0 (450) 538-2339 www.mt-sutton.com

Mount Sutton, in a deep snow zone, has built up a solid reputation thanks to the quality of its downhill skiing, the number and variety of its trails and its famous glade skiing as well as its warm and friendly atmosphere.

Take advantage of the beautiful fall weekends to take in the Panoramaduodlacôte which offers recreational, educational, cultural and sports activities for the whole family. Breathtaking views of the fall foliage and spectacular viewing sites are easily accessible by the quadlift.

North Hatley pop. 704

L'un des joyaux des Cantons-de-l'Est, North Hatley est situé sur la rive nord du lac Massawippi. Ce village est reconnu pour ses splendides résidences, auberges et gîtes touristiques dont l'architecture remonte à ses premiers estivants, aristocrates, magnats de l'industrie et grands propriétaires terriens, ayant quitté le sud des États-Unis

pendant et après la guerre de Sécession, entre 1860 et 1865. Offrez-vous une visite patrimoniale du village en voiture à chevaux (pour groupes seulement, sur réservation), en communiquant avec Les Randonnées J. Robidas (819) 563-0166 / 1-888-677-8767.

North Hatley est aussi renommé pour la qualité et le cachet de ses galeries d'art, de ses boutiques d'artisanat, de cadeaux et d'antiquités. Durant la sai-

son estivale, rien de tel qu'une randonnée à cheval pour admirer les paysages uniques que vous offre cette région. Pour une détente assurée, le Théâtre Piggery vous convie à une de ses productions anglophones. Tout près du village, sur la route 108, Montjoye lance une invitation aux amateurs de ski alpin.

Mines Capelton

800, route 108, North Hatley J1M 2A3 (819) 346-9545

Au coeur du plus vieux complexe minier du Canada, vivez une expérience unique en visitant les galeries souterraines d'une ancienne mine de cuivre creusée au pic, à la pelle et... à la chandelle. De plus, on offre sur ce site qui s'étend sur 650 acres de forêt: casse-croûte, boutique, musée, sentiers de montagne, piste cyclable, etc. Location de vélos. Horaire: De avril à octobre (réservation préférable). Entrée (taxes en sus): adultes: 14,95 \$; enfants (3 à 5 ans): 2,95 \$; enfants (6 à 15 ans): 8,95 \$; famille: 34,75 \$. Tarifs spéciaux pour groupes. Durée maximale de la visite: 2 h 30.

À proximité

À l'ouest de North Hatley, par la route 108, domine au coeur de la vallée du lac Massawippi la municipalité de Sainte-Catherine-de-Hatley dont l'ancien nom courant anglais est Katevale. À mi-chemin entre la rive ouest du lac Massawippi et le lac Magog, cette municipalité est dotée d'une vue panoramique splendide sur le mont Orford et ses environs.



RECORD FILES

CONTINUED ON NEXT PAGE

GREAT FOOD

Bistro
Cedric's
Pub

GREAT FUN

RELAX AND ENJOY
THE EXPERIENCE

BRUNCH EVERY SUNDAY
10 a.m.-1 p.m.
all you can eat **\$8.95**
242-2929
51 LAKESIDE, KNOWLTON

BROME FAIR

September 3, 4, 5, & 6, 1999

Points of interest: The Big Parade - Sunday at 1:00 p.m.; Luc Leduc - The Duke of Magic throughout the fair; Birds of Prey - flight demonstration; The Petting Zoo; Livestock competitions - Regular and 4-H; Horse racing & breeds demonstration; Knowlton Harmony Band & much more.

Friday at 7 p.m.
No Fences
Garth Brooks
Tribute Act

*Saturday at 8:30 p.m.
Paul Brandt,
A.M.A. Award Winner*

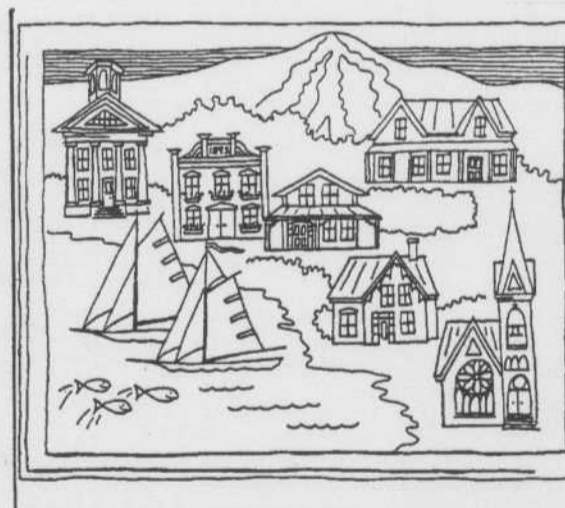
Sunday at 8:00 p.m.
George Fox,
Canadian Country Music
Award Winner

*Tickets for this show are on sale by mail or phone. We will accept money orders or Visa and Mastercard.
Grandstand tickets, no reserve seating: \$15.00 (\$12.00 before July 1)
Standing room on the track: \$20.00

There will be a \$2.00 handling fee charged on each order. Prices include GST & PST. Tickets will also be available at The Shack in Knowlton, F.G. Edwards, West Brome, Dépanneur Brome and the Fairgrounds in Brome (no handling fee). These tickets do not include entry to the fairgrounds.

Annual Beef Bar B Q - August 7, 1999 with the Chris Blais Orchestra.

450-242-EXPO (3976)



LL BROME
Manufacturer's Outlet

Sports and Travel
Clothing and Accessories

Open 7 days
Satisfaction guaranteed

91 Lakeside, Knowlton, 450-243-0123

VISITING THE REGION

CONTINUED FROM PAGE 9

Saint-Benoît-du-Lac Abbey

Benedictine monks have lived a contemplative religious life at the Abbaye de Saint-Benoît-du-Lac (on the west shore of Lake Memphremagog) since 1912, observing the rules of Saint Benoît de Nursie (480-547) and the constitution of the Monastic Congregation of Solesmes, France. Their lives are primarily focused on the search for God and on prayer, balanced with study, physical work and pastoral ministry to their visitors and guests.

Part of the Abbey's buildings are the work of Dom Paul Bellot (1876-1944), the internationally celebrated French Benedictine architect. His style is characterized by the search for perfect harmony in accordance with the geometric laws of nature. Later buildings include a guest-house, the basement and the

steeple of the Abbey church, all designed by Dom Claude Côté (1909-1986). The Church, designed by Montreal architect Dan S. Hanganu, was consecrated on December 4, 1994.

On the grounds, a guest house is available for men who wish to withdraw in retreat for a few days in an atmosphere of peace and meditation. Women are also welcomed in a neighbouring house run by nuns.

Eucharist is celebrated daily at 11 am in Gregorian chant as is Vespers starting at 5 pm except Thursdays (at 7 pm) and Tuesdays in July and August. Certain parts of these public prayers are conducted in French.

A boutique is open all year-long, except for Sundays, Christmas and Boxing Days, New Year's Day and Good Friday.

Opening hours are:

Monday to Friday, 9:00 am to 10:45 am and 1:30 pm to 4:30 pm, and Saturdays 9:00 am to 10:45 am and 11:45 am

to 4:30 pm, from November to May inclusively. From June to October inclusively, from Monday to Saturday 9:00 am to 10:45 am and 11:45 am to 4:30 pm. In July and August, from 11:45 am to 6:00 pm. Visitors may purchase such Abbey-made products as cheese and apple cider as well as books, tapes of music or religious chant and articles of devotion.

Visitors arriving in groups are asked to give advance notice. Appropriate clothing (dress or trousers) is required in the Abbey and especially in the Church. Dogs are not permitted.

For information and reservations, call: (819) 843-4080 / for women 843-2340 / Fax: (819) 868-1861.

Lac-Mégantic pop. 5941

Fondée en 1885 par des Écossais, la ville de Lac-Mégantic et ses environs savent plaire en toutes saisons. L'automne, les activités de plein air se pratiquent au milieu de couleurs flamboyantes. L'hiver, la région est re-

connue notamment pour ses sentiers de ski de randonnée et de motoneige. Les adeptes de la pêche blanche s'en donnent aussi à cœur joie, car le magnifique lac Mégantic (17 km de longueur par 2 km de largeur) regorge de truites. L'été, de nombreuses activités sont possibles: golf, baignade, pêche et sports nautiques. En juin, on vous propose le Grand Tour du lac Mégantic, une randonnée cycliste familiale de 53 kilomètres ainsi qu'un tournoi de pêche familial.

Pique-niques en pleine nature, contemplation d'un coucher de soleil scintillant sur le lac, photographie de paysages riverains, autant de loisirs captivants vous attendent grâce au charme de cette magnifique région.

Découvrez le Parc des Vétérans en bordure du lac tout près de la marina au centre-ville et faites un arrêt à la galerie d'arts estivale. Faites aussi une halte à l'église Sainte-Agnès, érigée en 1913, renfermant, derrière le maître-autel, une splendide verrière londonienne datant du début du XIXe siècle.

Club-Vacances Baie-des-Sables

2588, Baie-des-Sables, C.P. 65, Lac-Mégantic G6B 2S5 (819) 583-3965 (accès par la route 263 Sud)

Centre récréo-touristique qui jouit d'une très bonne réputation et qui répond à tous les goûts. Que ce soit pour la baignade, voile, planche à voile, vélo (location), randonnée pédestre, camping et chalets, interprétation de la nature, ski de randonnée, ski alpin, glissade avec tubes ou tout simplement pour la détente, on saura vous satisfaire. Horaire: à l'année, tous les jours. Entrée: frais de stationnement (été).

À proximité

Située sur la rive ouest du lac Mégantic, Piopolis a été fondée en 1880 par des zouaves pontificaux, défenseurs du pape Pie IX (1846-1878). Avec sa baie, la municipalité offre aujourd'hui aux vacanciers divers aménagements dont une plage, une marina et un camping. Une façon d'apprécier les charmes de cette région est de parcourir le rang des Grenier (accessible au cœur de Piopolis) où se trouvent les points de vue les plus saisissants du lac Mégantic.

CONTINUED ON NEXT PAGE



→ Natation	→ Équitation
→ Pedalo	→ Camping sauvage
→ Canoe	→ Vélo
→ Tennis	→ Soccer
→ Volleyball	→ Rouli-roulant
→ Balle molle	→ Fer à cheval
→ Badminton	→ Patin à roues
→ Petanque	→ Piscine intérieur - sauna
→ Jeux d'enfants	→ Hébergement

**BIENVENUE
WELCOME**

Possibilité de réservation de groupe pour tout genre de réception ou rencontre

1506 Ave. du Lac Ouest
Roxton Pond (450) 378-3953



RICK FOSS/COMMUNITY CORRESPONDENT

THE LARGEST CHOICE OF HAIR PRODUCTS & ACCESSORIES IN THE REGION!

La maison du cheveu de Granby



HAIR REPLACEMENT SERVICES

- Hair Stylist
- Esthetics
- Make-up

with or without appointment, open 7 days/week

JUST ARRIVED



FASHION FORMULAS by ECOLY

223 Principale, Granby 375-3425 1-888-540-8344



Mr. Simon Bilodeau &
Mr. Philippe McGale
Investment Advisors

Complete Professional Investment Planning and Portfolio Advice

**LÉVESQUE
BEAUBIEN
GEOFFRION INC.**

150 St-Jacques, Suite 202, Granby -(450) 378-0884 1-877-378-0442

Call today for information regarding:

- Retirement and Estate Planning
- Portfolio Strategies
- Tax Advantaged Investment Strategies
- International Investments



Visiting the Region

CONTINUED FROM PAGE 10

Ayer's Cliff pop. 893

Steeped in Anglo Saxon heritage, Ayer's Cliff offers one of the best public beach and boat access areas to Lake Massawippi. One of the province's few remaining band-shells is found here serving as a venue for the occasional summer concert. Five minutes from town, along Ayer's Cliff and de la Montagne roads, is Camp Les Sommets, a great lookout point and family picnic spot.

Nearby

Along Route 208, there are peaceful villages to be discovered, all of which reflect the area's early Anglo Saxon settlements. Massawippi (an Abenaki word for clear water) and Hatley, named for a town in England, are examples. St. James Anglican Church, built in 1818, is a stately building to appreciate in Hatley.

Dunham pop. 3374

Dunham fut le tout premier canton du Bas-Canada. La rue Principale, avec ses nombreuses maisons centenaires en pierres des champs, garantit un heureux retour dans le passé. Depuis quelque temps, la région est surtout connue en raison de ses vignobles.

Quand le carillon sonne pour les vendanges, il sonne aussi pour la cueillette des pommes.

À proximité

Offrez-vous aussi une promenade à vélo sur les routes de campagne pour découvrir les beautés de cette région, dont le pittoresque village de Stanbridge East datant du XIXe siècle. Dans ce village, une église anglicane (1860), située au bout d'un chemin, sur la rue Maple, près de McCord, rappelle les petites églises gothiques de la campagne anglaise. Cette église est accompagnée d'une ancienne école de style néo-classique.

Les Jardins à fleur d'eau

140, route 202, Stanbridge East JOJ 2H0 (450) 248-7008

Parc floral dédié aux plantes aquatiques où vous pourrez faire une promenade dans les sentiers fleuris autour des étangs pour y admirer les nymphéas, les plantes des lieux humides et les lotus qui font le charme des jardins d'eau et l'attrait des étangs. Une collection aquatique unique au Canada. Aire de pique-nique. Horaire: juin à mi-octobre, tous les jours de 9 h à 17 h. Entrée: Adultes: 7 \$; 10 à 18 ans: 5 \$; 65 ans et plus: 5 \$; gratuit jusqu'à 9 ans.

Musée Missisquoi 3

2, rue River, Stanbridge East JOJ 2H0 (450) 248-3153

Opéré par la Société d'histoire de Missisquoi, ce musée contient plus de 12 000 pièces reliées à l'histoire du pays. Il est réparti dans trois bâtiments d'époque: le moulin Cornell (1830), le magasin général Hodge et la Grange à Bill. On peut consulter les archives de la Société sur réservation. Horaire: dernier dimanche de mai au 2e dimanche d'octobre, tous les jours, de 10 h à 17 h. Bureaux et archives à l'année. Entrée: adultes: 3 \$; étudiants et enfants (moins de 12 ans): 1 \$; aînés et groupes: 2,50 \$. Durée de la visite: 1 h 30.

Stanstead Plain, Rock Island, Beebe Plain (Border towns)

Favoured by both history and nature, the border towns region has been populated by various groups over the years (Abenakis, New Englanders, Irish, Scottish, English and French Canadians) who have all left their distinctive marks.

Colby-Curtis Museum

35 Dufferin Street, Stanstead

PO. Box 268 JOB 3E0 (819) 876-7322

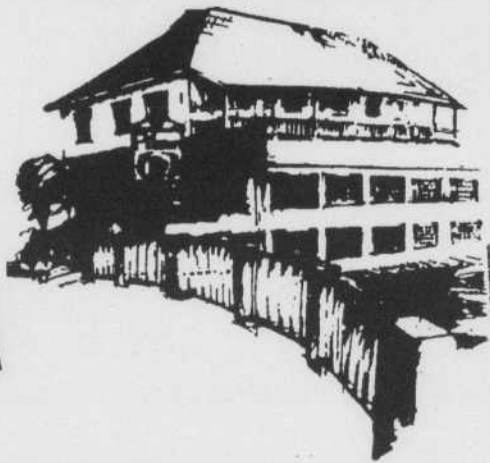
E-mail: mcccip@interlinx.qc.ca

In Stanstead Plain (pop. 1059), there are magnificent 19th-century houses and commercial buildings on Dufferin Street, the main artery. The Colby-Curtis Museum is housed in the prestigious, Neo-Renaissance styled Carrollcroft home, built in 1859 (ethnologic/historic collection, boutique, garden and tea-room in summer). Timetable: Mid-June to mid-September: Tuesday to Sunday, 10 am to 5 pm; mid-September to mid-June: Tuesday to Friday, 10 am to noon and 1 to 5 pm; Saturday and Sunday, 12:30 to 4:30 pm. Admission: adults: \$4; students: \$2; seniors: \$2. Families: \$9; free for children under 6.

Immediately to the south, Rock Island (pop. 1067) is the site of the Haskell Opera House (819) 876-2471, a historic building erected in 1904, straddling the Canada-US border. To the west is Beebe Plain (pop. 975), known for its granite quarries, where the border-line runs down the middle of Canusa Street (Canada-USA), with the United States on the south side and Canada on the north.

The Pilsen

**OPEN
7 DAYS**



The Pilsen Pub & Restaurant,

situated on the Massawippi River at the heart of the village, is open 12 months a year. There are many ways to enjoy good food and good cheer at the Pilsen. You may choose from our antique town'n country dining room, our English style pub, or during the summer, from our two weather-proofed terrasses. Our different menus and specials offer a vast selection at affordable prices. Have our Chef prepare your meal the way you like it; we guarantee your satisfaction.

Let The Pilsen surpass your expectations. Guaranteed!

Reservations: (819) 842-2971

55 MAIN STREET, NORTH HATLEY

THE NEW SONATA

ENTIRELY RE-THOUGHT FOR 1999

SONATA GL **\$229***
LEASE FROM /MONTH

FINANCING FROM
1.8% available



INCLUDING A LONG LIST OF STANDARD EQUIPMENT SUCH AS:
AUTOMATIC TRANSMISSION, AIR CONDITIONING, ELECTRICAL FEATURES,
TWO AIR BAGS AND MUCH MORE (6-CYLINDER ENGINE AVAILABLE WITH GL AND GLS MODELS)

TEST DRIVE IT AND SEE FOR YOURSELF!

*Photo for illustrative purposes only. Leasing payments based on a 48-month contract for the 99 SONATA GL from \$229/month. The consumer's total obligation for 48 months is \$10,992. Cash down of \$1,950 or equivalent trade-in, security deposit required, transportation, preparation, taxes and registration extra. Administration fee of \$350 extra. Retail financing is available at a rate of 1.8% up to 48 months, or 3.8% up to 60 months. Mileage charge of 8c per km a year (20,000 km/year included). Purchase option at contract's end. Cannot be combined with any other offer. Subject to credit approval. See your participating dealer for details. In-stock vehicles only. Offer valid for a limited time.



HYUNDAI

A new era



HYUNDAI GRANBY

1196 PRINCIPALE, GRANBY

378-4666

VISITING THE REGION

Summer activities in Bromont

June 17, July 1, 15, 29, August 12, 26, from 7 to 9:30 p.m.

Thursdays under the stars events, Bromont Velodrome, John Savage Street, (450) 534-3333

June 19, July 10, 17, 31, from 9 a.m. till noon

Saturday's track event, Bromont Velodrome, John Savage Street, (450) 534-3333

June 22 to 27

Bromont's International Equestrian Competitions at Bromont's former Olympic Site



June 26 to September 6, Thursday to Saturday, at 8 p.m.

"La Femme du boulanger", Théâtre de la onzième heure, (450) 534-1123

July 4 to August 29, at 4 p.m.

Music Concerts, "Beautiful Sundays", John Savage Park

July 30 to August 1 Eastern Canadian Track Championship, Bromont Velodrome, John Savage Street, (450) 534-3333

August 5 to 8 Downhill World Cup, mountain biking at Bromont's Ski Resort

August 12, at 6 p.m. Concert by the Orford Art Centre at Bromont's former Olympic Site, 1-888-310-3665

August 27 to 29 Antique Car Exhibit

August 27 to 29 Quebec's Hope Championship, Bromont Velodrome, John Savage Street, (450) 534-3333

September 1 to 5 World Masters Championship, mountain biking at Bromont's Ski Resort

September 4 & 5 Yves Sabourin's Equestrian Competitions at Bromont's former Olympic Site

September 4 to 6 Quebec's finals cup, mountain biking at Bromont's Ski Resort

September 11 & 12 Quebec's Elite Championship, Bromont Velodrome, John Savage Street, (450) 534-3333

October 1 to 31 International Duck Festival

ANTIQUES
&
Quality Items
WANTED FOR
CONSIGNMENT
SALE

July 8, 16th & 17th
Knowlton
United Church

B. Reid (450) 243-5335
J. McGee (450) 242-0246
R. Price (450) 243-5980

The Robinson Residence

Gracious living for retired people. Private rooms with bath, home-cooked meals. Delightful environment, competitive rates. For more information ask for: Mrs. Koph 450-263-4404

**738, Principale
Cowansville**



PERRY BEATON/COMMUNITY CORRESPONDENT

Special thanks to

TOURISME

CANTONS DE L'EST

for their collaboration

THE
RECORD

ANTIQUE

"The antique admirer"

A wonderful mix of old and new.

- ANTIQUES - OAK - IMPORTATIONS - GIFTS
FROM 10:30 TO 5:30

231 Knowlton Road, Knowlton, Lac Brome. (450) 242-2392

Sutton! It just doesn't get any more natural.

La région la plus nature qui soit!

Clothing for all

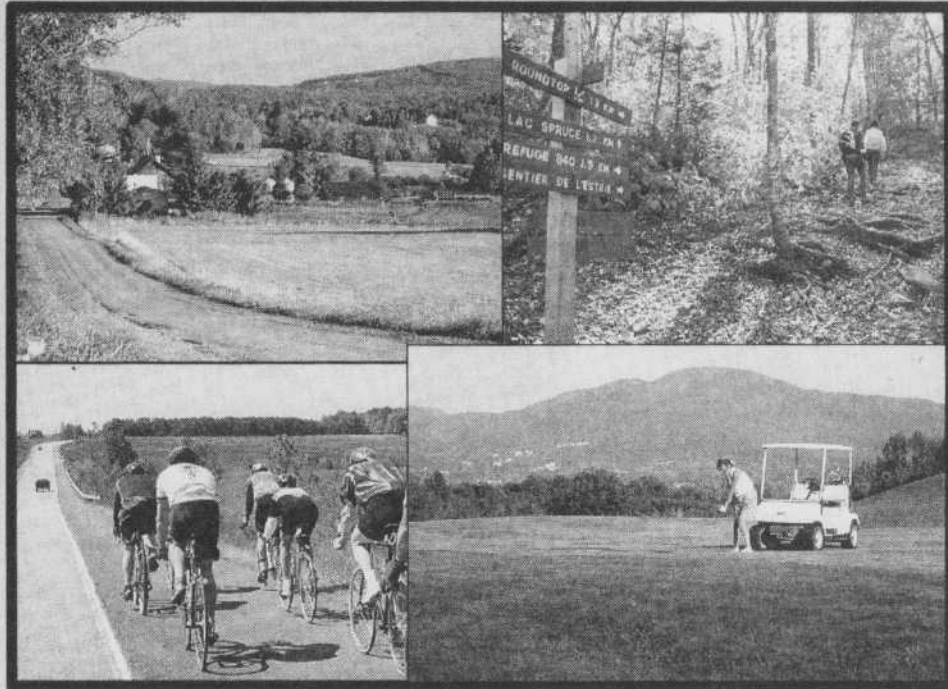
Boutique Nath'Elle
Nathalie Bédard

CLOTHING

- Women (size 6-20)
- Juniors
- Men & children (6 months - 14 yrs.)

New merchandise every weekend
Competitive prices
ALTERATION WORKSHOP

Drop off for
COWANSVILLE DRY CLEANERS
NEW SERVICE:
SHOE & CORDONNERIE
22 Principale N., Sutton
(450) 538-0292



For people who like to explore.
A little gourmet around the world.
Take out service - Pastry, Coffee & Tea
European Breakfast
Lunch (soups, salads, sandwiches, quiche)
Pause Café

Open 8:30-5:30 Closed Tuesday

10d, Principale sud, Sutton, Qc
(450) 538-1717

Le Cotillon



Material d'Artisanat
Wool & Knitting Supplies
Acrylic Paints, Brushes,
Wood Shapes to Paint
Books, Toilepainting Gifts, beautiful silk
& dried flower arrangements, etc.,
& much more...
New stock arriving every week.

2b PINE ST., SUTTON 538-2977



FINE FRENCH & GERMAN CUISINE

Specialities:

- Schnitzel - Beef Whirl
- Duck Breast with Morel Sauce
- Beef & Kidney Pie,
- Sauerkraut Plates
- Home-made Desserts

- Table d'Hôte starting at **I 3⁵⁰**

Tues.-Sun., Lunch from 11:30
Tues.-Sat., Dinner from 6:00 p.m.
Reception room available
4 rue Maple, Sutton (450) 538-4355

All roads lead to Sutton...

- Canoeing Art Excursions
- Camping Biking Shopping
- Museum Gardens Workshops
- Cafés Hiking Lamas

Summer the way it should be.

1-800-565-8455 or
450-538-8455

Sutton, Live it!

Les Alléghanys

Restaurant & bistro
cuisine aventure

Spécialités:
Moules, pâtes, foie de veau
saucisses et choucroute
canard de Brome
Menu d'automne

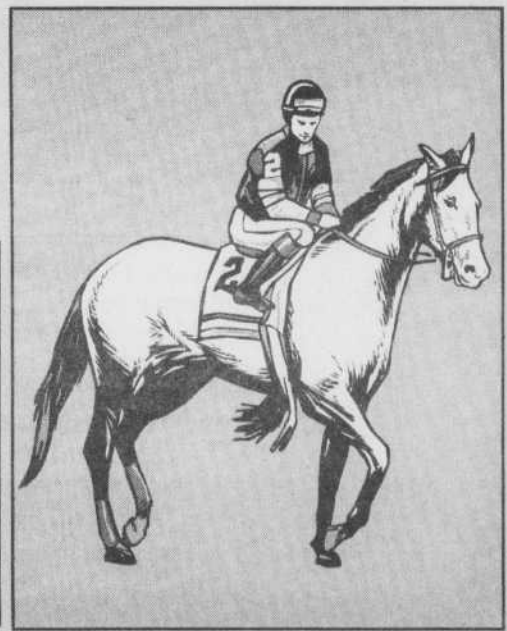
Tables d'hôte:
Menu international
tous les soirs
plus de 20 choix
de **9.95\$ à 19,95\$**

Cuisine végétarienne
Desserts maison
Espresso - Cappuccino
Bières importées &
micro-brasseries
Carte des vins élaborée
Reservations

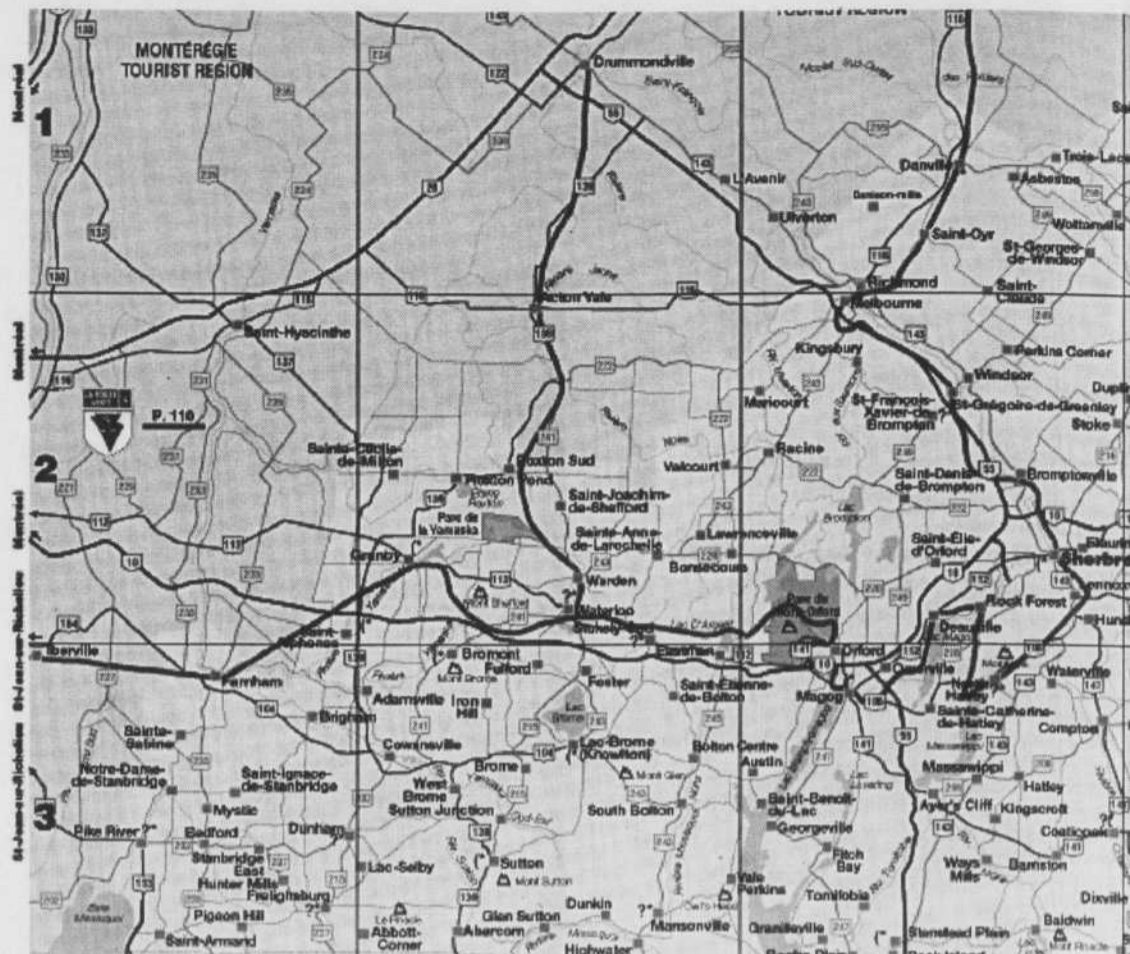


33 Maple
Sutton
538-3802

Sutton! The place to be!



*Experience
the
natural charm
of the
Eastern
Townships!*



MERCERIE Latendresse
DEPUIS 1950

Coupe
DC
Casino de Charlevoix

PLAY
in the courts

YOU COULD WIN:
• the chance to take part in the Pro-Am of the Charlevoix Coupe Casino at the Manoir Richelieu Golf Club
• and \$1000 of clothing from the wonderful Greg Norman collection

WE HAVE MANY PROMOTIONS IN THE STORE FOR FATHER'S DAY.

5773 Foster St., Waterloo, Que. (450) 539-0787
Eastern Township. Aut. 10, Exit 88

CLUB DE GOLF WATERLOO

"Get away... A unique experience is waiting for you in an exciting glen and mountain scenery... less than one hour from Montreal"

NAPOLEON

4 players	→	\$107 ⁸⁰ *
2 carts		
2 players	→	\$59 ¹² *
1 cart		

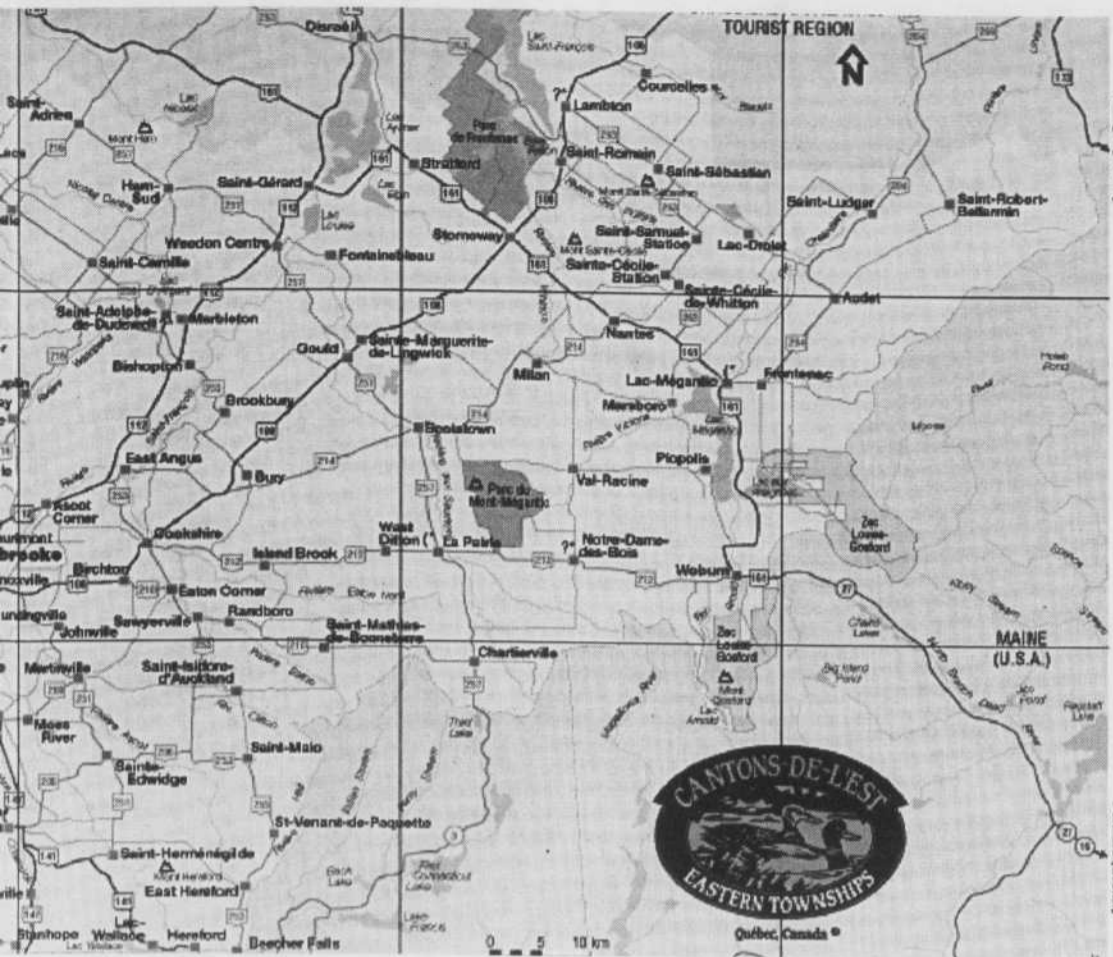
WATERLOO

4 players	→	\$88 ⁶⁸ *
2 carts		
2 players	→	\$48 ⁶⁹ *
1 cart		

*Taxes not included.

Reservations needed
(450) 539-1055
1-800-567-1055

*On presentation of this coupon. Valid Mon.-Fri., & after 2 p.m. on Sat., Sun. & holidays. Taxes not included.



*Sauvez
la vraie nature
des
Cantons-de-l'Est!*

LES MARCHÉS

TRADITION

(Marché Jimmy)

*Enjoy summer cooking & entertaining
with family & friends*

OPEN EVERY DAY 8 A.M.-10 P.M.

**250 Knowlton Rd.,
Lac Brome**

(450) 243-6655

The right wine adds panache and flavour to a basket of scrumptious goodies

The Eastern Townships is gaining renown for its vineyards and wineries. In addition to red, white and rosé wines made in Dunham, Magog, Brigham, Iberville, Rock Forest and Stanbridge East, ciders, honey and maple syrup wines, beer and gingerale are produced in the region.

Check out farmers' markets, vegetable and fruit stands, and cheese factories for fresh produce to add that special

Townships taste to your picnic. Savour tastes from the Townships and bon appétit!

(SOP) The arrival of summer brings with it the pleasure of being able to eat outdoors again. Whether it's as modest as a lunchtime sandwich in the park, or a carefully orchestrated and prepared meal, there is an added attraction to dining al fresco.

But the best open-air meal of all is the

picnic. Its greatest advantage is that it can be as simple or as elaborate as you wish. The atmosphere outdoors is relaxed and much more conducive to informality than the proper politeness of the dining table. The picnic is also an occasion to take advantage of the good weather.

But since we're sitting at the picnic table today, what's to eat? The assortment of cheeses looks good; the cold cuts are very tempting, a few are a little spicy, and just look at that ham. There are two pâtés, one with pepper, black olives, a neat salad for everyone in a little dish, and James has brought his wonderful bread.

There's quite an assortment of flavours there, so what wine are we going to drink? Let's look at a few guidelines first:

Keep the wines simple. Clean, crisp, fruity flavours are best. Out in the fresh air is no place to appreciate fine and expensive wine. There's inevitably a breeze or extraneous smells, so you can't begin to enjoy a lovely bouquet or finesse of flavour.

But crisp and fruity mean nothing if the wines aren't cool, and too cool is better than not cool enough, because the wine will warm in the glass. You don't have anywhere to keep the wine cool away from home? Roll each bottle up in a section of the newspaper when you take it out of the fridge, and keep the bottles in the shade all the time while outside.

Forget about matching wine and food. There are so many flavours on this table, you need wines that are good all-rounders. The successful pairing of wine and food has more to do with whom you are with, where you are, what you are doing and whether you are having fun, than the old equation of red wine with meat, white wine with fish.

The perfect picnic wine can be rosé — not the soft blush wines we see a lot of

these days, but rosé with a good dose of fruit, zippy acidity and perhaps a touch of almond bitterness on the finish to give the wine a little "grip" to bite back at the food.

Such wines abound in the Rhône Valley and the south of France and are mostly made from the grenache grape. There is even an appellation, Tavel, that produces only rosé wines. Provence has perhaps the best reputation of all for rosé, not surprising when you consider what a wonderful picnic region it is. Another source of excellent grenache rosé is Spain, where the grape is called garnacha.

Of course, rosé wines are not restricted to the grenache grape or to France and Spain. Excellent examples can be found in many red-wine producing areas in both Europe and the New World.

If you worry whether rosé can stand up to all the picnic flavours, don't. Even the paler ones, the colours the French call "oeil de perdrix" (partridge eye) and the pale "pelure d'oignon" (onion skin) have quite firm flavours. Intensity of colour in wines often indicates intensity of flavour, and some of the more deeply coloured wines seem like rosés trying to pass for reds or vice-versa.

As far as white wines go, there are any number that can grace our picnic table. Wines made from the chardonnay and sauvignon blanc grapes have enough get-up-and-go to fairly challenge all the meats and cheeses on the picnic table.

Pinot gris and pinot blanc are the names to look for. The same grapes grow in northern Italy, and are called pinot grigio and pinot bianco.

What it really comes down to is that if you like a certain wine, you'll probably like it even better at your picnic.

Remember that in a pinch, most wines go with most foods, and as long as you stay away from extreme flavours like

chocolate and grapefruit you'll be fine. Go a little lighter on the vinegar and a little heavier on the oil in the vinaigrette for the salad and you will avoid another minor pit-fall.

Hear Ye, Hear Ye

Brome County News
Now available for:

1 year subscription: **\$47.00**
GST **3.29**
PST **3.77**
TOTAL **\$54.06**

88 LAKESIDE, KNOWLTON, QUE. J0E 1V0 Tel.: (450) 242-1188

RE-DISCOVER

OWL'S HEAD
• GOLF •

"MAGNIFIQUE" - Le Journal de Montréal
"MAGNIFICENT" - Montreal Gazette

OWL'S HEAD GOLF, designed by renowned architect Graham Cooke, opened in 1992. Like a good bottle of wine, **OWL'S HEAD GOLF** matures every year. "Panoramic, breathtaking, challenging" describes the course.

After your golf game, why not have a quiet and relaxing meal in our dining room with a full service bar.

GOLF & STAY PACKAGES
Starting from **\$70⁸⁶**
• per person
• per night
• plus tax

CALL US AND WE WILL GLADLY CUSTOMIZE A PACKAGE FOR YOU!

***** GOLF DIGEST MARCH '99**

FOR RESERVATIONS & INFORMATION
878-1453 (Mtl. direct) (450) 292-3342
Toll Free: 1-800-363-3342
181 Ch. Owl's Head
Mansonville, Quebec
Online? Look at our golf site!
<http://www.owlshead.com-info@owlshead.com>

OWL'S HEAD
SKI • GOLF • TENNIS • MARINA

MONSIEUR Muffler
TIRES • BRAKES

Specialties:

- Muffler
- Made to measure
- Shocks
- Alignment
- Batteries
- Oil Change
- Suspension
- Brakes
- Tires
- Radiator
- Antifreeze
- Recycling
- Rack & Pinion

Sylvain Authier, owner

1494 Du Sud, Cowansville 263-2000

À L'ÉTAGE
Antiquités - Antiques

Denise & Joseph Beaudry

Large assortment of Glass & Porcelain
Rare objects, Furniture & Knick Knacks

OPEN
Fri. 1-5 p.m.
Sat. 10-5 p.m.
Sun. 12 p.m.-5 p.m.
After June 15th -
Open every day

Tel. (450) 539-2303 FOSTER (Ville de lac Brome)

Some highlights of Sherbrooke and environs



Blanchard Park

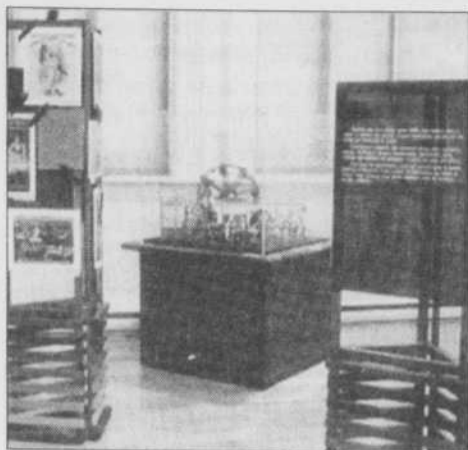
The Sherbrooke region covers the municipalities of Ascot, Bromptonville, Deauville, Fleurimont, Lennoxville, Rock Forest, St.Élie d'Orford, Sherbrooke and Waterville. You will be



A wide range of hiking trails

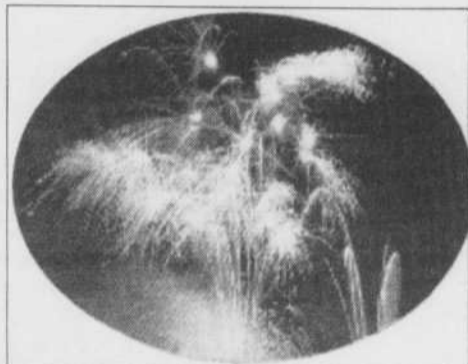
amazed by its rich cultural life and the numerous outdoor activities and events which are offered in the area.

It offers you an urban stop-over place



The Sherbrooke Historical Society

at the heart of a rich mosaic of sites of interest, close to nature. Discover its natural beauty while biking on the Grandes-Fourches cycling network. It is



Grands Feux Molson du Canada

a 75 km trail with a 53 km loop which goes through North Hatley and is a short ride from camp-sites, hotels, major tourist attractions and museums. From springtime on, festive events blossom!

The Quebec Festival of Harmonies opens the season, followed by the Eastern Townships' Great Cycle Rallye, the Sherbrooke Blues Festival, the Grand Molson Fireworks Competition, the Lac des Nations Festival and to close



Giant hive, Ferme Lune de Miel

the season, the Sherbrooke International Film Festival, the Canoeing Down the St. Francis River and the World Tradition Festival. In summertime, the region bustles with numerous festivals, shows and other events Bistros and



Domaine Howard

café-terraces give the visitor opportunities to mix with local folk. Don't forget the Riverside Trail: 20 km of walking paths and cycling trails which provide access to Plage Blanchard (Blanchard Beach) and its reception area, where you may pursue a wide range of out-

door and aquatic activities. Accompanied by a guide, you can explore the Magog River on board the electric-powered boat, La Charmeuse, silent and pollution-free.

Trails lead you to the Lac des Nations and in downtown Sherbrooke, the spectacular Magog River Gorge where a guided tour is offered. Stop to visit the Frontenac Power Plant, the oldest operational hydroelectric plant in Quebec.

CONTINUED ON NEXT PAGE

Diane Demers foot care hygienist



Manicure and nail care



Application of permanent nails
(Gift certificates available)
(450) 266-0997

245 de la Rivière, Cowansville, Que.

Agence immobilière ESTRIEL 2000 INC Courtier immobilier agréé



ABERCORN. One of a kind stone house on 24 acres. 10' ceilings, 5 bedrooms, beautiful woodwork, sunset views, \$425,000.



RUITER VALLEY. Recently build 3-bedroom house on 13 private acres. Hardwood floors throughout, gourmet kitchen - swimming pond and views, \$249,000.

Visit our internet web site: www.estriel.com.

JOHN BOUDREAU
Affiliated Real Estate Agent

22 Principale N., Sutton, QC J0E 2K0
Tel.: (450) 538-2549 Fax: (450) 538-2781

Au Royaume du Steak STEAK HOUSE

Table d'hôte starting at \$9.95
The best sizzling steak in the area!

NEW! Heated Terrasse
Children's menu

300 Lewis
(facing the arena)
Waterloo

RESERVATIONS APPRECIATED

(450) 539-0811

Wedding Gifts



Come and see our many
gift ideas for summer
entertaining!

Gifts, jewelry, decorations

Domaine du Parc, Cowansville (450) 266-4747

Some highlights of Sherbrooke and environs

CONTINUED FROM PAGE 17

and its interactive exhibit "Lumières sur la ville" (City Lights). The superb outdoor terrace with its picnic area offers an impressive viewing point of the gorge.

The Sherbrooke region has a rich architectural history, with charming Anglo-Saxon influence, which is yours to discover in the elegant houses of Sherbrooke's Old North Ward, in Lennoxville's delightful antique stores or in the various museums.

Winter in Sherbrooke is just as exciting! The Challenge automobile sur glace du Canada (Car-driving event on ice) is of international scale, with world-class drivers competing. Right in town, winter sport enthusiasts can downhill or cross-country ski at Mont Bellevue and skate on the Mago River at Parc Blanchard or on the Domaine

Howard pond.

Snowmobilers can link up to the provincial network of snowmobile trails, including the circuit J.-A. Bombardier, directly from Sherbrooke's hotel area. Snow scooters, tobogganing

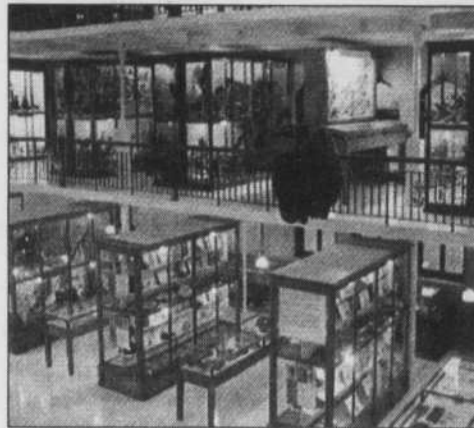
or ice climbing, Sherbrooke offers all the pleasures of winter!

For more information on the Sherbrooke region contact the

Société de Développement Économique de la Région Sherbrookoise

1308 Portland Blvd., PO Box 426, Sherbrooke (Quebec) Canada J1H5J7
Telephone: (819) 822-6195-Fax: (819) 822-6074

Internet: <http://www.sders.com/tourism>
-Email: tourisme@sders.com



Musée de Séminaire de Sherbrooke



Musée des beaux-arts de Sherbrooke

ANTIQUITÉS
Golden Swan

305 Knowlton Road
Knowlton, Quebec

Gail Gibbs 450-242-2946

*Visit the Eastern Townships.
There's plenty of fun to be had by all!*

CLOSING

40% SALE

on all merchandise

CUIRS

Q. ton.tik

143, PRINCIPALE, GRANBY

THE RECORD

The only English daily in the Eastern Townships

SUBSCRIPTION RATES

\$31⁰⁶ for 3 months

\$61⁵⁴ for 6 months

\$119⁶³ for 1 year

(these prices include QST & GST)

Name: _____

Address: _____

Postal Code: _____ Tel. No.: _____

Please mail with payment to:

THE RECORD
P.O. Box 1200,
Sherbrooke, QC J1H 5L6
569-9528 • 242-1188 • 1-800-463-9525

SUBSCRIBE TODAY!

Brome County
NEWS

Alison Steel
Secretary

(450) 242-1188

Stick to the rules when you play golf

(SOP) Golf arguably has more rules than any other sport, but if you learn to appreciate that they are there to help rather than penalize, you will enjoy the game that much more.



is recommended.

You should keep the book in your bag and refer to it from time to time.

Aside from the rules of the game, there are a variety of tips — do's and don'ts — that are designed to help you get around the course while displaying

consideration for other players.

For example:

- Play without excessive delay. The game is meant to be played in a prescribed period of time, approximately 4 hours and 30 minutes at the most.

- Keep pace with the group ahead. If you find an entire hole open in front of you, you're too slow.

- Replace all divots, rake sand traps and repair your ball marks on the green.

- On the green, pick up your feet when walking. You should also take note that more and more courses, even public ones, are demanding players wear soft spikes to minimize the damage to greens.

- Be ready to putt when it's your turn. The player farthest away from the

hole goes first. The same is true of approach shots.

- Obey rules governing use of electric carts. Park behind or on the side of greens. If it's necessary to cut across a fairway, do so at a 90-degree angle.

As for things not to do:

- Don't walk in front of other players while they're hitting.

- Don't talk while another player is hitting.

- Don't hit your shot to the green until it has been vacated by the group ahead and players are safely out of



harm's way.

- On the green, don't walk on another golfer's putting line.

Dozens and dozens of greens await Townships visitors. Beautiful vistas await you - on and off the course.

Travel tips that may really help

(SOP) Sick of getting sick before you travel? Here are some things to contemplate before your next vacation.

1. Not to nag, but try to do the following all year to ward off stress: eat right, get enough sleep and exercise.

2. If you're a workaholic, make a point of enjoying the scenery on the way home from work; try meditation or relaxation techniques for 15 minutes during the day; and leave your problems at work, rather than discussing them at dinner. Go home on time as often as you can.

3. Look forward to your vacation but don't concoct unrealistic expectations that might lead to disappointment.

4. Laugh, even if your travel agent loses your hotel reservations. You might as well yuk it up.

5. Pack simply and try to do it a day in advance of departure.

6. If at all possible, leave your cell phone, laptop and portable fax at home.

The Eastern Townships - blending nature, recreation, culture and heritage!

**MORE THAN
A STYLE,
A
LIFESTYLE**


Men's ladies' & children's
clothing made in France
Large sizes available.

Armor·lux

255 Knowlton Rd., Knowlton, P.Q. (450) 242-2828

**Tradition Of Quality
Since 1938**





**UNIVERSITÉ
BISHOP'S
UNIVERSITY**

CONFERENCE CENTRE
OPEN MAY 15-AUGUST 30 ANNUALLY

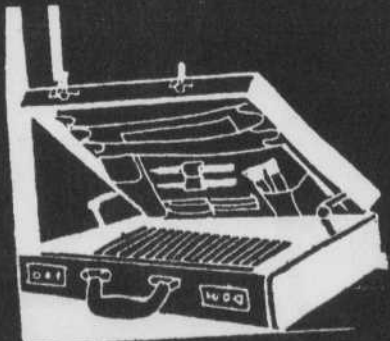
*Did you know
you can...*

- HOLD ASSOCIATION/
COMPANY MEETINGS
OR CONFERENCES AT
BISHOP'S?
- HAVE A FAMILY
REUNION AT BISHOP'S?

*Why choose
Bishop's?*

- BECAUSE WE HAVE
SUPERB FACILITIES AND
OFFER EXCELLENT
SERVICE
- BECAUSE WE ARE
INEXPENSIVE
- BILINGUAL SERVICES

For more information: Visit our
conference website at
www.bishops.ca
or call (819) 822-9651
or 1-800-567-2792 ext. 2651



The Place to Be!
- The Eastern Townships



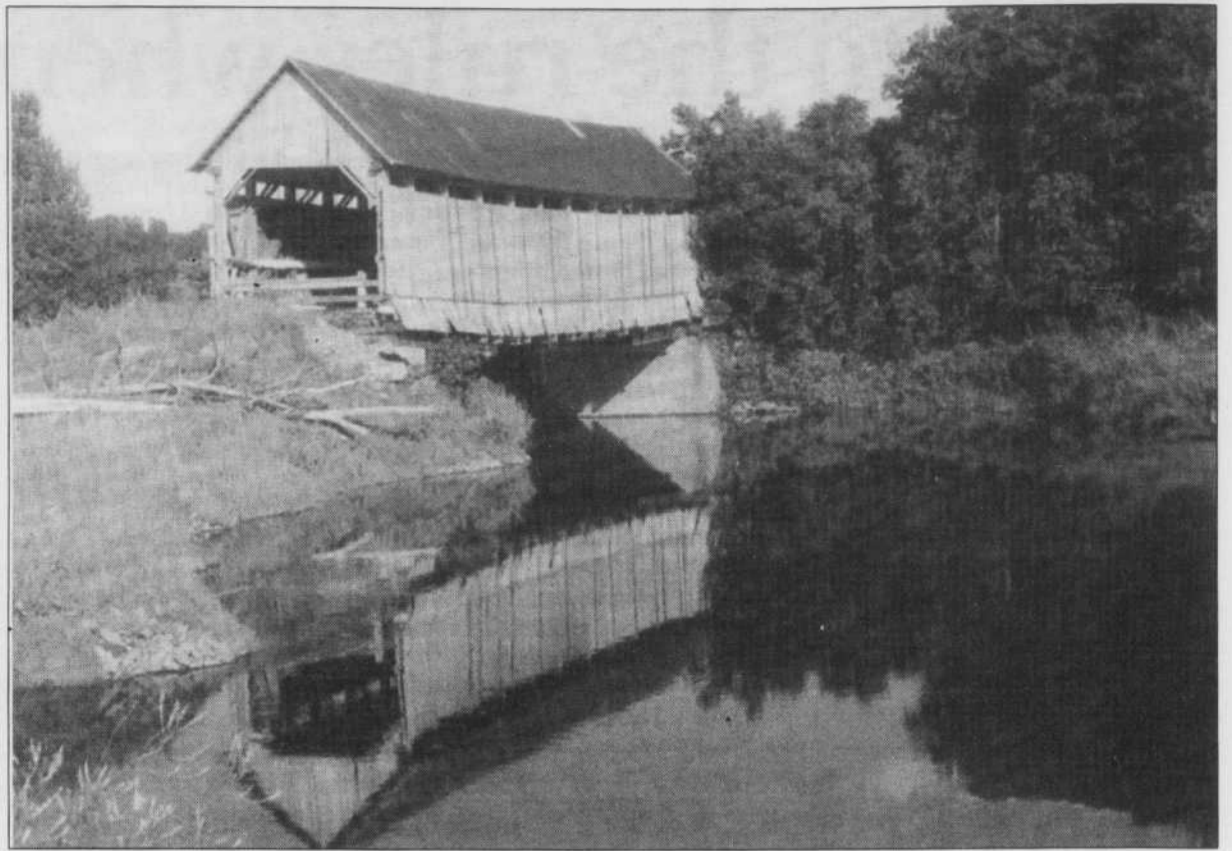
La Clé du Plaisir
 BOUTIQUE ÉROTIQUE

- Lingerie all sizes +
- Original ready to wear
- Creams & lotions
- Aphrodisiacs
- Stimulating articles
- Japanese condoms
- Magazines
- Greeting cards
- Videos xxx
- Jokes & surprises

Discrete & courteous service.
The difference is high-class!

185 Principale, Granby 777-0804

Come and meet us, the pleasure is here



COURTESY: CAMPAGNE DE LEVÉE DE FONDS POUR LA SAUVEGARDE DU PONT COUVERT DROUIN



SUCCESSION - Loyalist inspired house, spacious, bright rooms - 6 bedrooms - near cycle path & services with view - double garage on 2 storeys - immense potential - ideal for professional, B & B or a nice big family - \$76,500.

Rose Bogo
 378-4120
 RE/MAX professionnel inc. Courtier immobilier agréé

Drouin (Spafford) Bridge, Compton Station was built in 1886. A fundraising campaign is underway to preserve this historic landmark. Its theme - "A bridge spanning generations, together preserving our heritage." Info: (819) 849-1023

VeloBrome inc. 

Win your purchase of any Velosport, Peugeot, ORYX, or Mikado bicycle.

One year of free adjustments on all new bikes. Contest ends July 11/99. Rules in store.

Mini-Tune-up \$15.00 taxes included.

Full tune-up \$30.00 taxes included.

Father's Day is coming...

1107 chemin Knowlton, West Brome (450) 266-5822
 Charles Riordon, prop. E-mail: velombrome@acbm.qc.ca

Other covered bridges may be found in the Eastern Townships - in Capelton (Rte. 108 towards North Hatley), Lingwick Township (near Gould), Milby, and Notre-Dame de Stanbridge.



Ateliers d'Art
Gaston Laliberté
& Associés

34 St-Jude Sud, suite 2, Granby
 Tel. 450-776-6706 • Fax 450-776-6944 • www.ateliers-dart.qc.ca



MATÉRIEL D'ARTISTE

MONTHLY SPECIAL

Artist' Materials

BRUSHES Winsor & Newton

SPECIAL 25%

All Techniques Azanta - Bamboo - Cirrus - Cotman - Galeria - Monarch - Regency Gold - Serie 7 - Serie 707 - Spectre Gold - University - Winton

Picture Frames

SPECIAL DISCOUNT

25% OFF ON ALL FRAMES

A basic first-aid kit should be in reach

(SOP) Summer activities can mean summertime cuts and bruises. A first-aid kit within reach is almost indispensable. However, the wide range of off-the-shelf first-aid kits make the right selection confusing and difficult.

Buying a first-aid kit without first-aid training is like buying a car without knowing how to drive.

A basic kit should include triangular bandages for making slings, sterile bandage for applying pressure to severe cuts and artery bleeding, rolls of sterile gauze for wrapping and holding bandages in place, scissors, bandages of various sizes and shapes for different types of minor cuts, a gel for minor burns, safety pins, athletic tape, antiseptic pads, tweezers and a first-aid manual.

More complete kits should include an aluminum rescue blankets. Other items include a small flashlight, materials for making a fire, candles, a CPR mask, a syringe for wound irrigation, a thermometer, elastic bandage for managing sprains, chemical heat or cooling pads, and

foam padding for immobilizing fractures.

But no first-aid kit is ever complete. Because John and Jane Doe can not legally administer medication to strangers (only authorized health practitioners can), kits do not come with medication.

You will have to customize your kit with common over-the-counter medications (non-Aspirin products, antihistamine, antibiotic ointment). Also, kits should be adapted to your family's medical needs and history. Individuals susceptible to such conditions as anaphylactic shock, heart problems, allergies or diabetes should think of including, if possible, the specialized medications in the kits.

The type of outdoor activity, the number of

people involved, the level of their first-aid training and the time of year will also dictate the contents and size of the kit.

Small kits might suffice in urban settings where para-medical help is just minutes away. Outdoor activities — like hiking, rock climbing, canoeing, where help can be hours away — require kits that are designed for outdoor use.

Some kits include items that are water- and rust-proof: stainless steel scissors, waterproof dressing, plastic containers for medications.

Sturdily built nylon kits that fold out flat, exposing all their contents, have a definite advantage over travel-type bags in which one has to rummage for items.

Téléphoto
offers you the lowest prices on Canon products


 Ask for your **FREE** discount card!

Canon Camcorder  starting at \$649⁹⁹	Canon Binoculars  starting at \$129⁹⁹
Canon 35mm Reflex  \$479⁹⁹	Canon Compact Camera  starting at \$69⁹⁹

MORE SAVINGS

50% REBATE ON FILM PROCESSING (C-41 - 35 mm) 1 HOUR PHOTO-FINISHING AVAILABLE <small>1 coupon per customer. Not valid in combination with any other offer. Valid until Sept. 30, 1999.</small>	FUJIFILM FREE WITH PURCHASE OF 2 FUJIFILMS WITH PROCESS INCLUDED GET A 3RD FREE (C-41) <small>1 coupon per customer. Not valid in combination with any other offer. Valid until Sept. 30, 1999.</small>	25% OFF LAMINATING <small>1 coupon per customer. Not valid in combination with any other offer. Valid until Sept. 30, 1999.</small>
--	--	--


 218 ALEXANDRE SHERBROOKE 564-0033


 218 ALEXANDRE SHERBROOKE 564-0033


 218 ALEXANDRE SHERBROOKE 564-0033

218 Alexandre St., Sherbrooke • 564-0033



(450) 378-8404



Corner of Main Street & Autoroute 10 Access Road
 20 minutes from Autoroute 20
 5 minutes from Autoroute 10 Exit 68

FINANCING - LEASING - TRADE

1999 MODELS

IMMEDIATE DELIVERY

FB 1817-2 \$690⁰⁰/month

FB 1817-3 \$699⁰⁰/month

FB 1817-4 \$708⁰⁰/month

Automatic Transmission + \$75⁰⁰

17600 lbs to 33000 lbs. G.V.W.

ASK FOR: RENÉ CLOUTIER
 OR
 ANDRÉ BEAUREGARD



Opening Hours: 8h00 to 21h00 Monday to Friday

THE OLDEST DEALER IN QUEBEC

VISITING THE REGION

STAINED GLASS PAINTING

- Courses - easy technique, easy to learn
personalize your decoration

STAINED GLASS

- Courses & material
- Large choice of glass & pattern books

VITRERIE MAURICE INC.

460 Cowie, Granby (450) 375-1318

FOR OPENING HOURS CALL US

INSCRIPTION
IN THE FALL

City tours and tour-guide services

ASBESTOS

Comité touristique de la région d'Asbestos
(819) 839-2911
For groups or individuals, by reservation.

BROMONT / WATERLOO

Safari Loowak
(450) 539-0501
www.safariloowak.qc.ca
For groups only, by reservation.

COATICOOK

Centre local de développement de la MRC de Coaticook
(819) 849-7014
Fax: (819) 849-9683
www.csoaticook.qc.ca/tourisme/
For groups only, by reservation.
Pamphlets describing heritage and panoramic
tours available.

GRANBY

Club Animation Tours et Voyages, Quebec Rendez-vous PHT inc.
(450) 375-7272
1-800-363-8974
www.clubtrs.ca
Packages and tours, by reservation.

LAC MÉGANTIC

Tourist Office
(819) 583-5515
1-800-363-5515
Fax: (819) 583-5555
E-mail: tourisme@megantic.net
For groups only, by reservation.

MAGOG

La Promenade de l'Estrie
(819) 847-0151
For groups and individuals, by reservation.

Réservations Estrie: Charter bus, tourist guide
(French, English, Spanish)
Packages with overnight stay and animation.
(819) 868-1421
1-800-667-1469
Fax: (819) 868-3869

NORTH HATLEY

Randonnés J. Robidas
(819) 563-0166
1-888-677-8767
www.randonneesjrobidas.qc.ca
For groups only, by reservation.
Heritage tour in
horse-drawn carriage.

SHERBROOKE

Tourist Office of the Sherbrooke Region
3010 King St. W., Sherbrooke
(819) 821-1919
1-800-561-8331
Fax: (819) 821-5863
www.sders.com/tourisme
For groups or individuals, by reservation (individuals, summer only).

Traces et Souvenirs

(819) 842-4710
Guided theatrical tour English, French)
For groups or individuals, by reservation (individuals, summer only).

Les Tours Bonjour

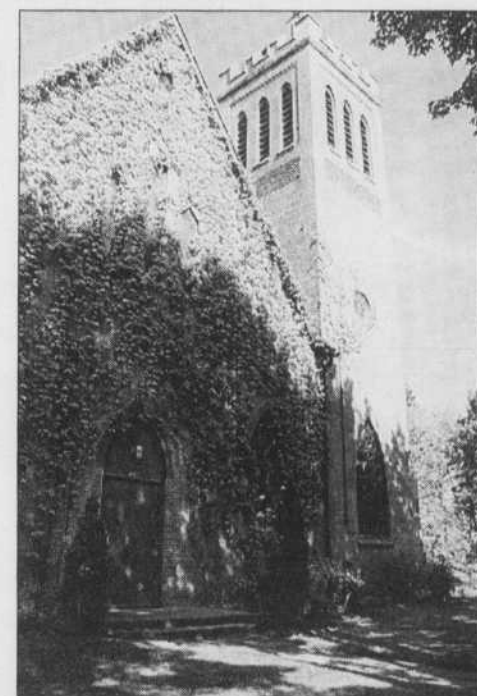
(819) 566-8797
1-800-560-8663
Regional circuits for groups only, by reservation.

Société d'histoire de Sherbrooke

(The Society's heritage and religious tours)
(819) 821-5406

SUTTON

Tourist Office of Sutton
(450) 538-8455
1-800-565-8455
For groups only, by reservation.



DAVID ANDERSON/COMMUNITY CORRESPONDENT

terrasses exotiques

ACE

- Suspended Garden
- Trellis and flower bac
- Pergolas and shade roofing
- Revo cable canopy
- Gloriettes and pavilions
- Cedar gazebo
- Wood and metal portal

Luc Bourgeois

Terrasses Exotiques 34, rue St-Jude Sud, Granby 378-5212

Arthur Charby

- Landscaper
- Landscaping
- Fences
- French Drain
- Patios
- Stone Walls
- General Caretaking
- Lawn & Tree Maintenance
- Tree Cutting & Clearing

Tel.: (450) 243-0023

A REAL CLEAN HOUSE
with NETTOYAGE P.M.
EFFICIENT - PROFESSIONAL
WITHOUT COMPARISON



Groupe
URGENCE SINISTRE

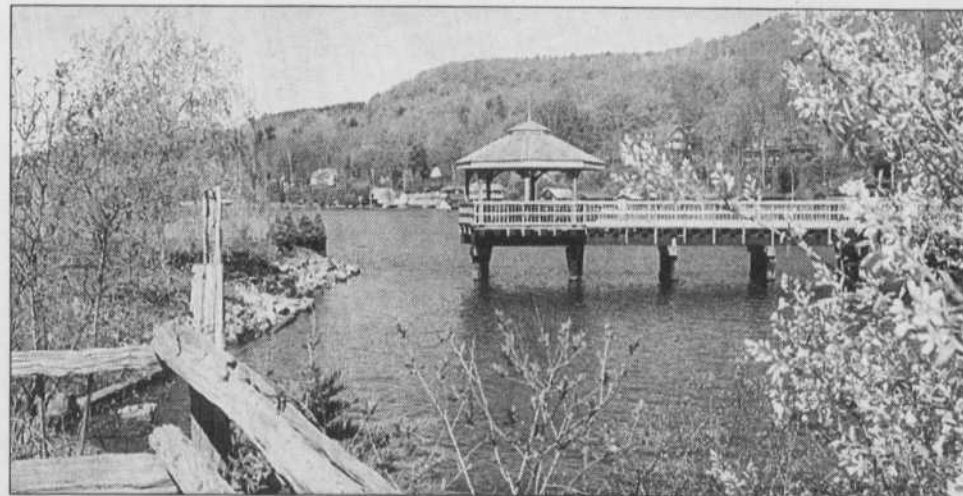
SPECIALITIES:

- Spring Cleaning
- Stain Protection
- Anti-Bacterial-fungussidal Treatment
- Ultrasonic Cleaning for Vertical & Horizontal Blinds
- Furniture & Carpet Cleaning
- After Disaster Cleaning
ex: water, fire, oil damage

AT YOUR SERVICE FOR 19 YEARS

45 GUY, GRANBY 375-1883

Check above
for e-mail
addresses
and telephone
numbers for
each area



BRUCE PATTON/COMMUNITY CORRESPONDENT

Townshippers' Day is always fun

Named a "Don't miss" event by The Eastern Townships Tourist Guide, Townshippers' Day has proved to be a consistently fun, family-oriented and entertaining day.

This year will be even more special than usual as Townshippers' Association, the organization that stages the Day, celebrates its 20th anniversary. The organizing committee in Knowlton, where T-Day will be held this year, is pulling out all the stops to celebrate in style.

Townshippers' Day will be held on

September 18, 1999, and Knowlton's distinctive Victorian charm will be the perfect setting for a day of activity under a warm autumn sun.

As the big day approaches Townships-based singers, dancers, artisans, children's entertainers and cultural groups are preparing for their part in this free day. Townshippers' Day will showcase these people to the more than 8 000 visitors expected to attend on September 18. The day will reflect the talent and diversity of the people who live here as well as showcasing the historic and cul-

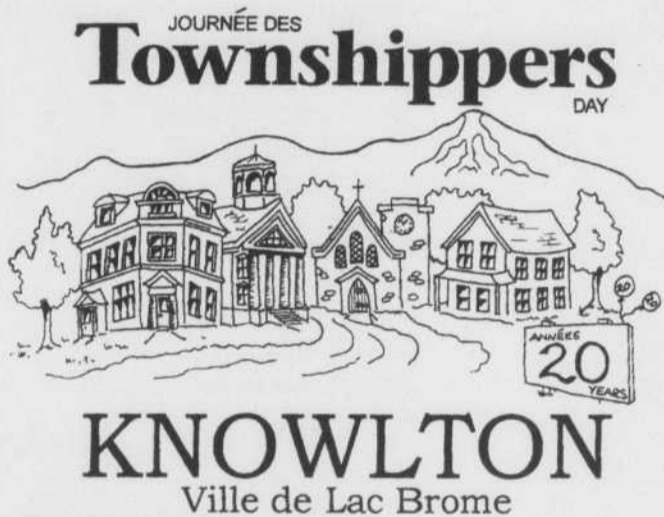
tural aspect of Townships life.

Four locations will be used in the village: The Lion's Park will be the main site, with shuttle buses moving visitors to Knowlton Academy, the Brome County Historical Society and Coldbrook Park. We want people to discover Knowlton and all its charms. Even the churches in town will be open and are planning concerts and displays.

The community is involved in all levels of this special day, including food like "mechouis", hot dogs, hamburgers, corn on the cob and other local treats.

The talents of Townshippers will be celebrated on Townshippers' Day with entertainment supplied by singers, dancers and musicians. With great community spirit entertainers have traditionally appeared at Townshippers' Day for free and this year is no exception.

Bring your kids and friends out for a great day! Don't miss out on any of the fun! Contact Townshippers' Association at (819) 566-5717 or (450) 263-4422 for more information about all the days events and activities.




Country roads, antiques, sailing, summer theatre, city tours, cycling paths - all to be discovered in the Eastern Townships!

NOW OPEN

BOUTIQUE

Le Marron

COWANSVILLE



- Decorations & Consultation (Home Service)
- Wallpaper • Fabrics
- Duvets, Linen
- Bath Accessories
- Dishware
- Gifts

CLOSED MONDAY

Sonia Prolean
DESIGNER

413-1 Principale
Cowansville

Tel./Fax: (450) 266-3773

052663-9118-n

Antique brass table & floor lamps presented by "Tai Pan"

MULTI LUMINAIRE

972 PRINCIPALE, GRANBY (450) 375-9030

EASTERN TOWNSHIPS EVENTS - SUMMER 1999

DATE	LOCALITY	EVENT / INFORMATION
to Dec. 3	Asbestos	Centennial celebrations (819)879-1999; www.reseau-sadc.qc/asbestos/100/
to June 20	Knowlton	"You Can't Take it With You" (play) (450) 539-3604
June 9-13	Bromont	Equestrian Competition (450) 534-3255
June 11	Granby	Défi-vision (car race) (450) 379-9318
June 11-13	Cookshire	Festival du Pain (819) 875-5681
June 12	Lennoxville	Friendship Day (819) 569-9388
June 13	Lac Mégantic	Grand Tour (cycling) (819) 583-5515; 1-800-363-5515
June 13-18	Asbestos	Jazz Week (concerts) (819) 879-4342
June 13-Aug.8	North Hatley	Sunday evening concerts (819) 563-4141
June 21-Jul.4	Knowlton	Art Exhibit & Sale (450) 243-6782
June 22-27	Bromont	Internatl. equestrian compet. (450) 534-3255
June 24	Towns across Quebec	St. Jean Baptiste celebrations (819) 823-2424; (450) 773-8535
June 24	Granby	Giant Omelette Confreres (450) 372-7273; 1-800-567-7273

EASTERN TOWNSHIPS EVENTS - SUMMER 1999

DATE	LOCALITY	EVENT / INFORMATION
June 24-27	Notre Dame des Bois (Mt. Mégantic Astrolab)	Summer Solstice Celebration (819) 888-2941; 1-888-881-2941
June 25-Aug.14	Knowlton	"Always... Patsy Cline (play) (450) 242-2270
June 25-27	Sherbrooke (for recreation aviation buffs)	Les Faucheurs de marguerites 819) 832-4385; (819) 563-4121
June 25-27	Coaticook region (ATV group trip)	Rendez-vous Quad Qc USA (819) 864-4473
June 26	Knowlton	Tour du Lac Brome (bike tour) (450) 243-6827
June 27	Richmond	Canada Day parade (819) 826-3284; 826-3444
June 28-Jul.4	Fleurimont	Yvon 'Pif' Dépatie tourn. (North American slowpitch) (819) 569-1556; 565-0522
June 28-Jul.11	Granby	Internatl. Sculpture Symposium (450) 777-5910
June 30-Jul.4	Sherbrooke	Blues festival www.blues.interlinx.qc.ca (819) 822-3654
July 1	Hatley	Canada Day festivities (819) 838-5826
July 1	Sherbrooke	Canada Day festivities (819) 346-2357

SEE NEXT PAGE



G.P.S. INC. (1993)
Santarossa INC.

CERAMIC, MARBLE, GRANITE, SLATE
SALE & INSTALLATION

1349 PRINCIPALE, GRANBY (450) 378-8509

HOME DECORATING SERVICE AVAILABLE

- Bedspreads
- Comforters
- Drapes
- Blinds
- Curtain Rods
- Wallpaper
- Paint
- and more

NEW
CALIFORNIA
SHUTTERS
2 1/4"
& 1 1/4"
Pine wood

Décor Parent

Division de

LES TISSUS RÉJEAN PARENT Ltée

255 York (angle Paré) Granby

372-6155

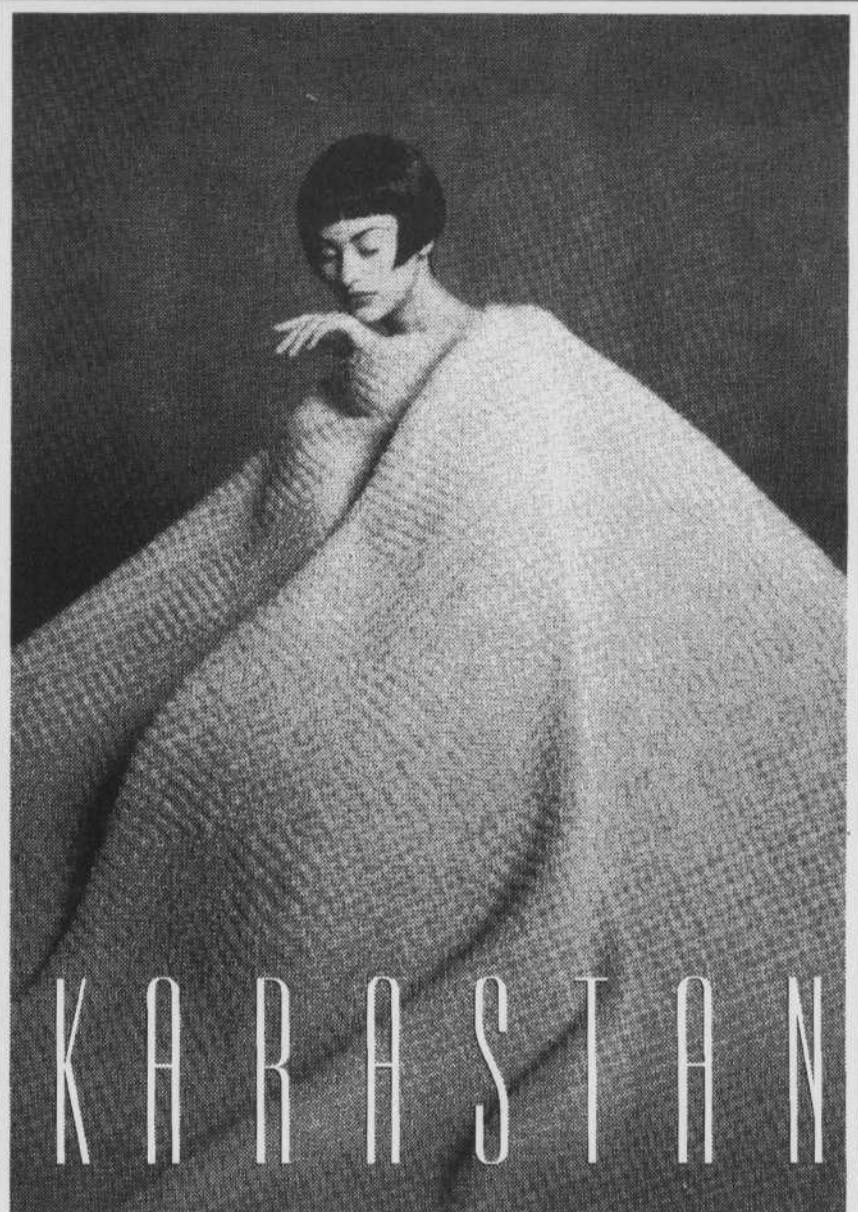
Visit
the
E.T.
this
summer.
1999
will
be
the
best.

EASTERN TOWNSHIPS EVENTS - SUMMER 1999

DATE	LOCALITY	EVENT / INFORMATION
July 2-4	Sutton	Coupe des Amériques (bike races) 1-888-777-VELO
July 2- Aug.14	Magog-Orford	Festival Orford (classical concerts) 819) 843-3981; 1-800-310-3665
July 3	Bury	Canada Day festivities (819) 872-3271
July 3-11	Granby	Cdn. tennis championships (450) 378-5336
July 4	Lac Mégantic	Meg-Antiques Auto Exhib. (819) 583-5882; 1-800-363-5515
July 4	Moe's River	Strawberry Social (819) 835-014
July 9-Aug.11	Knowlton	"Loot" (play) (450) 242-2270
July 9-11	North Hatley	Antique Fair (819) 563-4141
July 9-11	Notre Dame des Bois	Astronomy Festival (Mt. Megantic Astrolab) (819) 888-2941
July 9-18	Drummondville	Festiv. Mondiale des Cultures (819) 472-1184; 1-800-265-5412
July 10	Kinnear's Mills	Orange Picnic (418) 424-3252
July 13-18	Sherbrooke	Fête Lac des Nations (fireworks compet.) (819) 823-5171
July 14	Knowlton	House & Garden Tour (450) 242-2270
July 14-17	Granby	Fête des mascottes (450) 375-4322; 1-877-375-4322
July 15-25	Cowansville	Internl. Buskers Festival (Street Musicians) (450) 266-0250

SEE NEXT PAGE

RUGS • TILES • HARDWOOD • LINO • CARPETS • CERAMICS • DECORATIONS



*D*ress up your home

without

stripping your wallet.

Carpets & much more



TAPIS
COWANSVILLE

548 Rivière,
Cowansville 263-4622



DÉPANNEUR
rouge
Restaurant

OPEN 7 AM-11 PM



Summer is here!

The Salad Bar & The Ice Cream Parlour are open.

Lunch daily specials.

It's a pleasure to serve you.

Serving Full Breakfast. Fresh Bread & Croissants every day.

483 Ch. Knowlton KNOWLTON Tel.: 243-0330

EASTERN TOWNSHIPS EVENTS - SUMMER 1999

DATE	LOCALITY	EVENT / INFORMATION
July 16	Coaticook	Christmas in July (819) 849-9677
July 17-18	Piopolis	Super Fishing Tournament (819) 583-5515
July 17-18	West Barnston	Equestrian Event (819) 838-5933
July 17-25	Knowlton, Mansonville, Sutton	Tour des Arts (450) 538-0605; (visits to studios & workshops) 1-800-565-8455
July 18	Knowlton	Brome Lake triathlon (450) 243-5944
July 18	Scotstown	Ceilidh Picnic (819) 657-4473
July 19-25	Bolton Centre	Heritage Week (exhibition) (450) 292-3444

EASTERN TOWNSHIPS EVENTS - SUMMER 1999

DATE	LOCALITY	EVENT / INFORMATION
July 20-25	Magog	Internatl. Swim Marathon (819) 843-5000
July 23-Aug.11	Knowlton	"The Impromptu of Outremont" (play) (450) 242-2270
July 24	Knowlton	Midsummer Gala (450) 242-1395
July 24-Aug.1	Magog-Orford	Memphremagog Arts Circuit (visits to studios & workshops) (819)566-7198; 843-2744; 1-800-267-2744
July 25	Bromont	Foster Horse Show (450) 242-1988
July 25	Sutton	Fête du soleil (S. American festival & fund-raiser) (450) 538-8455; 1-800-565-8455
July 29-Aug.1	Granby	Couleurs urbaines (artists) (450) 375-4322; 1-877-375-4322
July 30-Aug.1	Granby	Granby International (antique cars) (450) 777-1330
July 30-Aug.4	Knowlton	Photo Exhibit (450) 243-6782
July 31	Mount Sutton	Swiss National Festival (514) 324-3123; 291-3244
Aug. 5-8	Bromont	Mtn. Biking internl. compet. (450) 534-2453
Aug. 6-8	Waterloo	Festival du Vélo (bicycle events) (450) 539-2453
Aug. 7	Mansonville	Potton Multicultural Fest. (450) 292-3313
Aug. 11-14	Notre Dame des Bois	Shooting Star Shower (Mt. Mégantic Astrolab) (819) 888-2941
Aug. 12-15	Bedford	Agricultural Fair (450) 248-2817
Aug. 12-15	Fleurimont	Traditions du monde (festival) (819) 565-0522; www.fleurimont.com
Aug. 13-15	Coaticook	Festival du Lait (819) 849-6010
Aug.13-15	West Brome	Sunnymead Picnic (music & family activities) (450) 539-2098
Aug. 19-22	Asbestos	Fest. des Gourmands (food) (819) 879-7075/7097
Aug. 19-22	Cookshire	Agricultural Fair (819) 875-5776



Melina

Anniversary Sale

For the month of June

20% off on our
Spring & Summer Collection

Evening gown
Rental

up to **50% OFF.** on Raincoats

50% OFF on selection of
Summer Clothes

OPEN SUNDAY - 12:00 TO 4:00

142 Principale St., Granby (Qc) Tel.: (450) 378-1309



SEE NEXT PAGE



Brome County
NEWS



Lynda Bellavance
Advertising Consultant
(450) 242-6892



Pauline LaRoche
Representante publicitaire/Sales Representative

Brome County
NEWS



(450) 242-1188/776-1070

EASTERN TOWNSHIPS EVENTS - SUMMER 1999

DATE	LOCALITY	EVENT / INFORMATION
Aug. 21-22	ComptonxxFarmers' Market	& Antique Machinery (819) 835-5448
Aug. 21-22	Dunham	Equestrian Compet. (450) 295-2122
Aug. 21-22	East Hereford	Frontier Circuits (biking) (819) 844-2463/2407; (819) 849-3337
Aug. 21-22	Magog-Orford	Lake Memphre. Bike Tour (819) 843-2744; 1-800-267-2744
Aug. 25-29	Bedford, Cowansville, Farnham, Sutton	Women's Cdn. Grand Prix Internl. (450) 266-4928; 538-8455; 1-800-565-8455
Aug. 26-29	Ayer's Cliff	Agricultural Fair (819) 876-7317
Aug. 27-29	Bromont	Couronnement voiture anc. (antique Cars) (450) 372-7643; 263-4322
Sept. 2-6	Bromont	Championnats Masters (world mtn biking) (450) 534-2553
Sept. 3-6	Brome	Agricultural Fair (514) 242-3976; 242-EXPO
Sept. 3-6	Granby	Internatl. Soccer Tournament (450) 372-0914
Sept. 3-6,11-12	Magog-Orford	Grape Harvest (vineyard tours, tastings, activit.) (819) 822-3654;

EASTERN TOWNSHIPS EVENTS - SUMMER 1999

DATE	LOCALITY	EVENT / INFORMATION
Sept. 3-10	Knowlton	www.interlinx.qc.ca/vendages Art Exhibit & Sale (450) 243-6782
Sept. 4-5	Bromont	Equestrian Compet. (450) 534-3255
Sept. 4-5	Frelighsburg	Festiv'Art (art & craft show) (450) 298-5630
Sept. 4-6	Notre Dame des Bois	Homage to Einstein (Mt. Mégantic Astrolab (819) 888-2941

SEE NEXT PAGE

*The
Eastern
Townships
is
the place
to be this
summer!*

RENTAL DAILY & WEEKLY

Boats
OUT BOARD MOTORS



JET SKI



ATV

MOTORCYCLE



474 Desjardins sud
Granby
776-7412

*Have a great
summer!*



LAKESIDE LEGEND: Well appointed Neo-Tudor mansion, private peerless setting with extraordinary Brome Lake views.



ELEGANT HAVEN: One level comfort, private landscaped Knowlton setting, mature trees, pool, gardens. A visual feast.



CASTLE SEEKS OWNER: 16 room manoir, 4 fireplaces, 2 towers, on 9 enchanted riverside acres. Low price!!!

ROYAL LEPAGE
ACTION

Sharyl Thompson

Affiliated. Real Estate Agent

(450) 266-6888

sharyl@total.net



Granby Granite Inc.

MONUMENT MENARD

Sale of Personalized Monuments
Choice of Unique Colors
Lettering & Repair on Site

THE ONLY AUTHORIZED AGENT
OF "ROCK OF AGE" MONUMENTS IN THE REGION.

449, Dufferin
Granby, Tel.: (450) 372-7729



LE
VAISSELIER ILLIMITÉ.

CHAIRS
TABLES
GLASS
DISHES
CUTLERY
TABLE CLOTHES
ACCESSORIES

RENTAL

(450) 534-0586
Fax: (450) 534-4129
vaisselier@videotron.ca

RENTAL

EASTERN TOWNSHIPS EVENTS - SUMMER 1999

DATE	LOCALITY	EVENT / INFORMATION
Sept. 4-Oct. 17	Sutton	Panoramaduodlacôte (foliage) (450) 538-2338/8455; 1-800-565-8455
Sept. 5	Compton	Harvest Festival (819) 835-5448
Sept. 5	Bedford	Auto Fest (450) 248-2817
Sept. 8-18	Sherbrooke	Internatl. Film Festival (819) 822-6082
Sept. 9-12	Richmond	Agricultural Fair (819) 826-3198
Sept. 9-18	Granby	Fest. Internatl. de la chanson (450) 375-7555
Sept. 11	Bromont	Opening horseback hunt (450) 534-3255
Sept. 11-Oct. 11	Magog-Orford	Flambée des couleurs (foliage) (819) 843-6548
Sept. 12	Sherbrooke	Canoe Excursion (St. Francis River) (819) 560-4242
Sept. 18	Knowlton	Townshippers' Day (819) 566-5717; (450) 263-4422



PERRY BEATON/COMMUNITY CORRESPONDENT



PERRY BEATON/COMMUNITY CORRESPONDENT



PERRY BEATON/COMMUNITY CORRESPONDENT



DAVID ANDERSON/COMMUNITY CORRESPONDENT



PERRY BEATON/COMMUNITY CORRESPONDENT

*Swim,
canoe,
bike,
hike,
golf,
shop,
eat,
sleep -
travel
in the
Eastern
Townships*



GRAND PRIZE L'EXCELLENCE DU FESTIVAL



Au Trois Canards

The Best Restaurant in the Eastern Townships

WEEKLY TABLE D'HÔTE

ADAPTED TO EACH SEASON

Open 7 days 11:30 a.m.-11:00 p.m.

78, Lakeside, Knowlton

Tél.: 450-242-5801