

# Journal



2013 • 2014 | ENGLISH VERSION

PARC NATIONAL DE LA  
**POINTE-TAILLON**







# THE MUST-DOS



## ► SWIMMING AND OTHER WATER SPORTS

### **The most beautiful beach on Lac Saint-Jean**

Lac Saint-Jean is a fresh water inland sea that warms up quickly under the summer sun. Its long sandy shores are endlessly inviting.

Close to the Visitors Centre, you'll find a supervised swimming area, a playground and canoe, pedal boat, pleasure kayak and sea kayak rentals.



## ► CYCLING

### **45 kilometres of bike paths around the peninsula**

Bike paths run along the shores of Lac Saint-Jean and Rivière Péribonka, cross a vast peat bog and go around the peninsula, passing Lac Askeen and Pointe Chevette along the way. The paths are two-way, so you can turn back any time. There are very few hills; these paths are easy for cyclists of all ages. You can rent a bike at the park rental centre.



## ► CAMPING

### **For a longer stay**

The park has 4 primitive camp grounds, 3 of which are accessible from the bike path on foot or by bike and 1 is accessible only from the water. Campers can rent a bike trailer to carry their gear. These woodland oases welcome you to the lake's sandy shores and warm water. Simplify your life with our ready-to-camp option. There are 15 comfortable Huttopia tents on 2 sites, accessible by bike or by car.



## ► DISCOVERY ACTIVITIES

### **See the park from another angle**

### **Take part in the park's Discovery Activities**

Our park wardens are waiting to share their passion for the park and for protecting nature. Join our park wardens in these exciting activities. Discover geomorphologic phenomena, plants and wildlife, and learn all about this fascinating peninsula. What could be more fun than visiting a beaver pond at dusk to watch the beavers go to work! Learn how to read the signs of moose in the woods and take a closer look at the secret lives of Lac Saint-Jean shellfish.



## ► BACK TO JEANNE D'ARC

### **Minibus History Tour**

Learn the history of the village of Jeanne-d'Arc on Pointe Taillon during this guided minibus tour. As you travel through the national park, learn about the early days of colonization and discover vestiges of this bygone era.

**\$20** Adults  
**\$10** Children (5 to 17 years)

Cost (Park admission extra)

Reservations required  
at 418 347-5371

# WELCOME

## OUR RAISON D'ÊTRE

Parc national de la Pointe-Taillon occupies a peninsula that extends into Lac Saint-Jean, an impressive body of water covering 1,100 km<sup>2</sup>. The park is bounded on the south by Lac Saint-Jean, whereas the lake's biggest affluent, Rivière Péribonka, forms the northern boundary. Visitors are greeted by gorgeous scenery on all sides .

Covering 92.2 km<sup>2</sup>, the park protects the natural and historical heritage of a part of one of Québec's greatest natural regions, the Saguenay–Lac-Saint-Jean lowlands, a flat, sandy plain without hills or mountains. A vast peat bog makes up much of the park, which is rich in wetlands, marshes and swamps.

Pointe Taillon shelters an intense concentration of animal life. Many beaver colonies live here, and moose are also found in the park. During migration periods, both Canada and Greater Snow Geese stop here by the thousands.

### ENTRY FEES VALID FROM APRIL 1, 2013 TO MARCH 31, 2014

CATEGORY OR GROUP	DAILY RATES	ANNUAL PARK CARD	ANNUAL NETWORK CARD
Adult (18 or over)	\$6.50	\$32.50	\$58.50
Child (6 to 17)	\$3	\$15	\$27
Child (0 to 5)	Free	Free	Free
1 adult with children 6 to 17	\$9.50	\$47.50	\$85.50
2 adults with children 6 to 17	\$13	\$65	\$117
Organized adults group	\$5.75	N/A	N/A
Organized youth group (aged 6 to 17)	\$2.50	N/A	N/A
School or student group	Free	N/A	N/A

Taxes included. Annual Park or Network card is valid for 12 months. Parking fees applicable during the high season. The prices, terms and services mentioned in this journal are subject to change without notice.

## Your Safety : Your Responsibility



Outdoor activities can involve certain risks. Make sure that you have the skills and abilities required for the activity you choose. It is important to know the risks inherent to this activity, to respect your limits and to use appropriate equipment. For more information, we invite you to consult our Web site at [sepaq.com](http://sepaq.com).

## REGULATIONS



To contribute to improving the quality of the park experience, an entry fee was established by the government. You must always carry your receipt or your annual card during your visit.



To preserve the natural riches for future generations, it is prohibited to remove natural elements (animals, plants, dead wood, rocks, etc.).



The flora is sensitive to being trampled. If we multiply the impacts of thousands of visitors, it's easy to understand why it is mandatory to stay on the hiking trails.



Nature exhibits exemplary equilibrium. The animals find everything they need to eat here, and that is why feeding wildlife is prohibited. In this respect, it is also prohibited to leave food or garbage unsupervised.



Domestic animals are prohibited in Québec's national parks. But guide dogs and service dogs accompanied by their foster families are admitted. However, these dogs must be easily identifiable, wearing the Mira scarf or harness. Those in charge of the animal must carry the foundation's letter of accreditation.



It's great to enjoy an authentic natural environment that is clean and healthy! Carry out your garbage, leave it in the containers provided, and take home any harmful substances, such as soap, oil, combustibles or pesticides.



For the preservation of the milieu and for your safety, only a certain number of activities are allowed in these parks. Plan your visit and first check the list of activities that are allowed in the parks you plan to visit.



# DISCOVERING THE PARK



If you enjoy contact with nature, want to relax in a peaceful environment, love to sit back and contemplate infinitely serene sunsets, then Parc national de la Pointe-Taillon is yours to discover.

## WATER SPORTS

Lac Saint-Jean is perfect for swimming or boating. Beautiful Pointe-Taillon extends into the lake with its long sandy shores, supervised beach, and natural tranquility. On site, you can rent a canoe, kayak or pedal boat and explore the vast lake. The warm shallow waters along the lakeshore are made for kids!

## SEA-KAYAKING

A kayak-camping circuit (map pp. 8 and 9) is ideal for exploring the shores and accessing the primitive campgrounds. Bring your own kayak or rent one from our rental centre and discover the park gliding from the water. For longer stays please contact Équinox Aventure (418) 668-7381/1 888 668-7381

## BICYCLING

Whether you're an occasional rider or an avid cyclist, you're sure to enjoy exploring the bike path through the park. The nearly level path meanders through Pointe-Taillon along Lac Saint-Jean and the Rivière Péribonka. A segment of the path even cuts through the Pointe, where cyclists can ride through the woods and across the park's large peat bog. The stone-dust bike path covers 45 km with easy access for all.

## BICYCLE REPAIR SHOP

If your bike needs fine-tuning, repairs, or accessories, the bicycle repair shop has everything you need, with fast efficient service. The shop is located inside the rental centre, near the Discovery and Visitors Centre.

## CAMPING

### PRIMITIVE CAMPING

The Pointe-Taillon campgrounds are truly original, and are accessible by bike, on foot, or by boat. Bike trailers (rental) make luggage transportation easy. The campgrounds are located near the lakeshore, along the bike path or on île Bouliane.

### READY-TO-CAMP PACKAGES

If you'd like to go camping but lack the basic equipment, or would simply like a little more comfort, our Ready-to-Camp packages in Huttopia tents are just what you're looking for!

## REGULATIONS

Lodging in a conservation park is a privilege in our society and requires special precautions. Strict rules and regulations govern human presence in the park, thus protecting the environment. Please take time to read the regulations (p. 17) and ask the park wardens how you can contribute to the conservation effort.

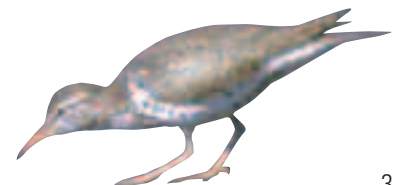
## USEFUL INFORMATION

### Cell phones

Cell phones operate everywhere on park territory. Call Park reception at 418 347-5371 during office hours for more information.

### Fire prevention

The fire weather index is posted at the park's main gate and in most campgrounds. Make sure you stay informed and comply with open fire bans... for everyone's safety.



# LIST OF DISCOVERY ACTIVITIES



## SELF-GUIDED DISCOVERY ACTIVITIES

- Peat bog Observatory (km 1.5 of the bike path)
- Discovery signboards
  - The Beaver (km 3.5 of the bike path)
  - The Moose (km 6.5 of the bike path)
- Exhibit "Awash with charm" (Discovery and Visitors Centre)

## AWASH WITH CHARM

To really discover everything that Parc national de la Pointe-Taillon has to offer during your stay, you won't want to miss the exhibition at the Discovery and Visitors Centre. These interactive modules and video and audio presentations reveal the park's secrets and give you a glimpse of its rich history.

### 1 HOW THE LAKE AND THE BEACH WERE FORMED

Using a pan, a park warden recreates the formation of Pointe Taillon and the far away origins of Lac Saint-Jean.

**Where:** Beach stand

**Length:** 15 minutes

### 2 FISHING FOR MUSSELS

A park warden invites you to observe the molluscs along the lakeshore, using aquascopes. The behaviour of these tiny, unobtrusive animals is sure to astound you.

**Where:** Near the guarded beach

**Length:** 1 hour and 15 minutes

Reservation needed: Discovery and Visitors Centre (418 347-5371)

**Cost:** \$5.50/adults (taxes included), children free.

### 3 BEAVERS AT WORK! NEW

Join a park warden on a short bike ride to explore the park's beaver ponds. Learn more about how beavers live and how they built the ponds at Pointe Taillon. The ride runs 4 km along the park's bike path.

**Where:** Bike path. Activity starts at the Visitors Centre.

**Length:** 1 hr. 30 min

**Cost:** \$5.50/adults (taxes included), children free. Reservations needed: (418-347-5371)

### 4 VISIT THE BEAVER POND

Come see a park warden in the evening to learn about beavers and get a chance to observe them in their natural habitat.

**Where:** Canal à Morin, km 2 of the bike path.

**Length:** variable

### 5 STORY OF A VANISHED VILLAGE

Once counting over 300 residents, the village of Jeanne-d'Arc, located on Pointe Taillon, was really well organized. Come have a chat with Ms. Hudon on her doorstep. But don't be fooled, she still lives back in her day, 1916. An entertaining way to catch up on the latest news and gossip!

**Where:** Le Carrefour (km 6.5 of the bike path)

**Length:** 15 minutes

### 6 THE PEAT BOG; A MYSTERIOUS PLACE

The peat bog is a trove of hidden secrets. A park warden will tell you how it was formed. You will discover a strange world populated with fascinating plants.

**Where:** Km 1.5 of the bike path

**Length:** 15 minutes

### 7 PEKUAKAMI – BENEATH THE SURFACE

Lac Saint-Jean is home to close to thirty species of fish. Some are even relicts of an ancient sea. Our park wardens will be happy to tell you more about all the mysteries beneath the surface of Lac Saint-Jean.

**Where:** Beach stand

**Length:** 15 minutes

### 8 TRACKING MOOSE

Pointe Taillon is home to a large number of moose. Find out how to read the signs of their presence with a park warden. Take a forest hike to learn all about the herd that lives in the national park.

**Where:** Km 5 of the bike path

**Length:** 60 minutes

### 9 BACK TO JEANNE-D'ARC NEW

Parc national de la Pointe-Taillon has many secrets waiting to be told. Guided by a park warden, discover vestiges of a bygone era and of a village that no longer exists. Learn the history of the village of Jeanne-d'Arc and of the early days of colonization on this guided minibus tour through the park.

**Where:** Tours leaves from the Discovery and Visitors Centre

**Length:** 3 hr. 30 min.

Reservation needed: Visitors Centre (418 347-5371)

**Cost:** \$20/adults, \$10/children (taxes included)

### 10 AROUND THE FIRE NEW

Gather around the campfire at sunset as multidisciplinary artist Pascal Bouchard tells tall tales and legends. A great way to meet people as you take part in two aural tableaux. A ritual-like experience inspired by nature.

**When:** July 21, 24, 28 and 31 and August 4, 7, 11 and 18, 2013

**Where:** Camping Les Castors (km 2)

**Length:** 45 minutes

**Cost:** \$10/adults (taxes included), children free. Reservations needed: (418-347-5371)

### 11 TALKS UNDER THE STARS NEW

Come hear our guest speakers talk about Archaeology in Saguenay-Lac-Saint-Jean, Entomology at Parc national de la Pointe-Taillon and many other interesting topics. Don't miss this opportunity to meet experts who share a passion for their field of study.

**When:** Check the weekly program of discovery activities for the schedule and themes.

**Where:** Visitors Centre Beach

**Length:** 45 minutes

**Cost:** \$5/adults (taxes included), children free. Reservations needed: (418-347-5371)

### 12 NATURE RALLY NEW

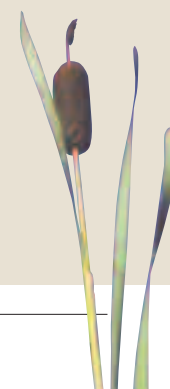
Sign up for our GPS-guided nature rally along the park's bike path (6-km stretch). This is a great family learning activity and the chance to learn more about Parc national de la Pointe-Taillon. Take part in the rally and you could win a contest prize.

**Where:** Bike path. Rally starts at the Visitors Centre.

**Length:** Variable

Reservations needed: Visitors Centre (418 347-5371)

**Cost:** \$10/team (taxes included). Includes loan of a GPS for 4 hours and entry in the contest.



# CALENDAR OF DISCOVERY ACTIVITIES



## Special Events

July 13 Sea Rowing Competition [www.festirame.com](http://www.festirame.com)

► The schedule could change due to unfavorable weather conditions.  
Other activities could be added to this program.  
See the daily schedule at the Discovery and Visitors Centre.

### June 22 to 30, 2013

ACTIVITY	MONDAY	TUESDAY	WEDNESDAY	THURSDAY	FRIDAY	SATURDAY	SUNDAY
Exhibit: "Awash with charm" Autonomous visit	8 am to 9 pm	8 am to 9 pm	8 am to 9 pm	8 am to 9 pm	8 am to 9 pm	8 am to 9 pm	8 am to 9 pm
12 Nature Rally	8 am to 5 pm	8 am to 5 pm	8 am to 5 pm	8 am to 5 pm	8 am to 5 pm	8 am to 5 pm	8 am to 5 pm
5 Story of a vanished village	See the daily schedule at the Discovery and Visitors Centre						
6 The Peat bog: a mysterious place	See the daily schedule at the Discovery and Visitors Centre						
9 Back to Jeanne-d'Arc							(Only June 23) 8:30 am

### July 1 to August 18, 2013

ACTIVITY	MONDAY	TUESDAY	WEDNESDAY	THURSDAY	FRIDAY	SATURDAY	SUNDAY
Exhibit: "Awash with charm" Autonomous visit	8 am to 9 pm	8 am to 9 pm	8 am to 9 pm	8 am to 9 pm	8 am to 9 pm	8 am to 9 pm	8 am to 9 pm
1 How the lake and the beach were formed				1:30 pm to 4 pm		1:30 pm to 3:30 pm	
2 Fishing for molluscs	See the daily schedule at the Discovery and Visitors Centre						
3 Beavers at work	3 pm		10 am	1 pm		10 am	
4 Stop at the beaver pond	7 pm to 8:30 pm			7 pm to 8:30 pm		7 pm to 8:30 pm	
5 Story of a vanished village			1 pm to 3:30 pm				
6 The Peat bog: a mysterious place	1:30 pm to 3 pm				1:30 pm to 3 pm		
7 Pekuakami – Beneath the Surface		1:30 pm to 3:30 pm					2 pm to 3:30 pm
8 Tracking the moose			7:30 pm		7:30 pm		
9 Back to Jeanne-d'Arc		8:30 am		8:30 am			8:30 am
10 Around the fire		9 pm (July 24, 31 August 7)					9 pm (July 21, 28, August 4, 11, 18)
11 Talks under the stars	See the daily schedule at the Discovery and Visitors Centre						
12 Nature Rally	8 am to 5 pm	8 am to 5 pm	8 am to 5 pm	8 am to 5 pm	8 am to 5 pm	8 am to 5 pm	8 am to 5 pm

### August 19 to 25, 2013

ACTIVITY	MONDAY	TUESDAY	WEDNESDAY	THURSDAY	FRIDAY	SATURDAY	SUNDAY
Exhibit: "Awash with charm" Autonomous visit	8 am to 8 pm	8 am to 8 pm	8 am to 8 pm	8 am to 8 pm	8 am to 8 pm	8 am to 8 pm	8 am to 8 pm
1 How the lake and the beach were formed	See the daily schedule at the Discovery and Visitors Centre						
2 Fishing for molluscs		10:30 am					
3 Beavers at work			10 am	1 pm			
5 Story of a vanished village			1 pm to 3:30 pm				
6 The Peat bog: a mysterious place	See the daily schedule at the Discovery and Visitors Centre						
7 Pekuakami – Beneath the Surface		1:30 pm to 3:30 pm					
9 Back to Jeanne-d'Arc				8:30 am			8:30 am
12 Nature Rally	8 am to 4 pm	8 am to 4 pm	8 am to 4 pm	8 am to 4 pm	8 am to 4 pm	8 am to 4 pm	8 am to 4 pm

### August 26 to September 15, 2013

See the daily schedule at the Discovery and Visitors Centre.

N.B. Please note that these activities can be cancelled due to inclement weather and the schedule of some discovery activities can sometimes be changed.  
Check the weekly program at the Visitors Centre.

# RATES ACTIVITIES AND SERVICES SCHEDULE



## RATES – EQUIPMENT RENTALS 2013

(TAXES NOT INCLUDED)

	1 HOUR	4 HOURS	DAY	
<b>BICYCLE</b>	Bicycle	\$12.50	\$25.00	\$35.75
	Child's bicycle	\$7.25	\$12.25	\$17.25
	Electric bike	\$25.00	\$50.00	\$71.25
	Child trailer	\$7.75	\$15.50	\$22.25
	Tandem bicycle	\$18.25	\$36.50	\$52.25
	2-seat pedal boat	\$14.75	\$30.25	\$43.00
<b>EMBARCATION</b>	Canoe	\$15.25	\$30.25	\$43.00
	Solo recreational kayak	\$13.50	\$27.00	\$38.50
	Tandem recreational kayak	\$16.50	\$32.75	\$46.50
	Solo sea-kayak	\$15.50	\$31.00	\$44.25
	Tandem sea-kayak	\$21.25	\$42.25	\$60.25
	Bike trailer			\$11.50
	Beach or bicycle accessories			\$5.75

Note: Prices are subject to change without notice.



## ACTIVITIES AND SERVICES SCHEDULE 2013

	MAY 31 - JUNE 20	JUNE 21 - AUGUST 18	AUGUST 19 - SEPT. 2	SEPT. 3 - OCT. 14
Discovery and Visitors Centre (reception, Boutique Nature, permanent exhibit and campground)	9 am to 5 pm Until 8 pm Friday	8 am to 9 pm	8 am to 8 pm	9 am to 5 pm Until 7 pm Friday
Swimming (lifeguard on duty)		10:30 am to 5:30 pm Depending on the weather before July 12	Depending on the weather	
Watercraft Rentals (canoe, recreational kayak, sea-kayak, pedal boat)		10 am to 5:30 pm	9 am to 5 pm	
Bicycle Rentals	9 am to 5 pm	8 am to 9 pm	8 am to 8 pm	9 am to 5 pm
Bicycle Repair Shop	8 am to 5 pm (5 days/week)	8 am to 5 pm (5 days/week)	8 am to 5 pm (3 days/week)	
Snack bar/Bar/Terrace (Sandwiches with local products, vending machines at all times)	Vending machines, lunches and beverages	10 am to 5 pm 2 days/week until July 11 9 am to 7 pm (starting at July 12)	10 am to 5 pm Friday to Sunday and Holiday period	Vending machines, lunches and beverages
Discovery activities		Summer program	End of summer program	Fall program to mid-september

The above information may change based on patronage and weather.  
For information: 418 347-5371



# PÉRIBONKA SHUTTLE BOAT 2013

June 21 to September 3, 2013

From the village of Péribonka, this shuttle service ferries you across to the bike path in the national park and to the Pointe-Chevrette and l'Île-Bouliane campgrounds.

The shuttle is operated by the municipality of Péribonka for cyclists, pedestrians and campers. Use the parking lot at the right of the DJ Tremblay grocery store, facing the Péribonka marina.

No reservations are needed for the shuttle. Go directly to the marina in Péribonka or Pointe-Chevrette to cross to the other shore. Payment is made at the DJ Tremblay grocery store. Please show up a few minutes in advance.

## SHUTTLE RATES<sup>3</sup> (TAXES INCLUDED)

	Adult	Child (6 -17)	Family
One-way	\$6	\$4	\$12
Round-trip	\$10	\$6	\$20
Île Bouliane <sup>4</sup>	\$18	\$10	\$36

<sup>3</sup> The park entry fee is mandatory in addition to these fares.

<sup>4</sup> Notice to campers: round-trip rates for Île Bouliane may vary depending on equipment.

## SHUTTLE TIMETABLE<sup>1</sup> SATURDAY TO THURSDAY

	10:00	11:00	12:00	13:00	14:00	15:00	16:00	17:00
Péribonka								
Pointe-Chevrette	10:30	11:30	12:30	13:30	14:30	15:30	16:45	17:30
Île-Bouliane <sup>2</sup>	9:00	11:45					16:30	

## SHUTTLE FARES<sup>1</sup> FRIDAY

	10:00	11:00	12:00	13:00	14:00	15:00	16:00	17:00
Péribonka								
Pointe-Chevrette	10:30	11:30	12:30	13:30	14:30	15:30	16:30	17:45
Île-Bouliane <sup>2</sup>	9:00	11:45						17:30

<sup>1</sup> Subject to weather conditions on Lac Saint-Jean.

<sup>2</sup> Upon request.

**Informations and reservations:** Municipality of Peribonka  
418.374.2967 #103 / 1.888.374.2967 / Cell. : 418.720.8215

## Choose your SPOT... PÉRIBONKA

- Campground offering Ready-to-Camp and heated pool
- "Bistr'eau Péribonka" Restaurant
- Shuttle Boat (Peribonka-Pointe-Taillon national park)
- Véloroute des Bleuets
- Marina
- The "À l'Eau Péribonka" event held on July 26-27
- Host of the *Traversée Internationale du lac St-jean*
- History and theme tour
- Art gallery
- Bed & Breakfast
- New • Kayak and bike rentals
- Rowboat rentals (fishing guide on demand)

Municipalité de Péribonka  
312, Édouard-Niquet  
418 374-2967, poste 103  
www.peribonka.ca  
cosep@peribonka.ca

facebook.com/peribonka1908

**MUSÉE LOUIS-HÉMON**

75 years

**In the footsteps of Maria Chapdelaine,  
live the Louis Hémon experience...**

- Exhibitions
- Animation
- Souvenir Shop
- Picnic area
- Bleuetière touristique

**MUSÉE  
LOUIS-  
HÉMON**

700, route 169  
Péribonka QC G0W 2G0  
418 374-2177  
www.museelh.ca  
museelh@xplornet.com

# MAP OF THE PARC NATIONAL DE LA POINTE-TAILLON *Land Born of Water*



## Don't Forget!

The primitive campgrounds are not accessible by car. Access is either by bicycle (luggage trailers can be rented), on foot or by boat.

Potable water is only available at the Discovery and Visitors Centre and the Rental Centre. Make sure that you have enough water with you before setting out on an excursion or when you return to your campsite.

## Accommodations in the Area

**A Auberge Île-du-Repos**  
105, chemin de l'Île-du-Repos, Péribonka (Québec) G0W 2G0  
Phone: 418 347-5649  
iledurepos@bellnet.ca www.iledurepos.com



**B Gîte Le Petit Hôtel**  
137, rue Saint-Jean, Sainte-Monique (Québec) G0W 2T0  
Phone: 418 347-1433 Toll free: 1 866 347-1433  
lepetithotel137@hotmail.com





**C Centre Touristique Sainte-Monique**  
900, rang 6 Ouest, Sainte-Monique (Québec) GOW 2T0  
Phone: 418 347-3124 Toll free: 1 877 347-3124  
[ctouristiqueste-monique@bellnet.ca](mailto:ctouristiqueste-monique@bellnet.ca), [www.ctouristiquesm.com](http://www.ctouristiquesm.com)

**D Hôtel Universel (downtown Alma)**  
1000, boul. des Cascades, Alma (Québec) G8B 3G4  
Phone: 418 668-5261 Toll free: 1 800 263 5261  
[www.hoteluniversel.com](http://www.hoteluniversel.com)

**E Notre Hôtel (downtown Alma)**  
450, rue Sacré-Cœur, Alma (Québec) G8B 1L9  
Phone: 418 668-3222 Toll free: 1 877 917-3222  
[www.notrehotel.ca](http://www.notrehotel.ca)

**F La Villa Victorienne**  
432, Rang 3 Ouest, Saint-Henri-de-Taillon (Québec) GOW 2X0  
Phone: 418 347-5959  
[www.gite.8m.com](http://www.gite.8m.com)

# FASCINATING LAC SAINT-JEAN



Water is quite fascinating. Particularly when it is shallow, warm, and surrounded by wide-open spaces, with no obstructions. We tend to breathe easier, relax. That's it! It feels like we're on vacation!

We are quite fortunate in the Saguenay-Lac-Saint-Jean region to have a lake with 200 km of shoreline, virtually a small inland sea. Larger than life!

Lac Saint-Jean is a very large body of water (1059 km<sup>2</sup>), but very shallow (68 m). Amerindians call it *Pekuakami*, meaning "flat lake". It is 44 km long and 24 km wide. To give you an idea, it is as wide as

the St. Lawrence River across from Tadoussac.

Are there any fish in the lake. Well, no fewer 28 species swim the lake's waters, one of which is the graceful Atlantic salmon, called "ouananiche" here. Other species include walleye, monkfish, and Northern pike, to name but a few.

And to complete the maritime picture, shells are scattered all along the sandy shores. Several species of freshwater\* molluscs made Lac Saint-Jean their home. When their lives come to an end, the waves transport their shells onto the

shores. To find out more, see the discovery activity schedule (p. 5). The park wardens have cooked up an amazing activity for you on the subject.

*\*Please note that it is strictly prohibited to gather molluscs. These tiny animals are protected by law in Québec.*

## The third largest lake in Québec

Excepting the large hydro-power reservoirs in the province, only the lakes Mistassini and "à l'Eau-Claire" are larger than Lake Saint-Jean (made reservoir-lake in 1926).



## DISCOVER THE FONDS PARCS QUÉBEC COLLECTION AND DO YOUR PART FOR CONSERVATION!

One dollar will be donated to Fonds Parcs Québec for each item purchased

Donations to Fonds Parcs Québec serve to support the conservation of Québec's national parks. Through the funding of research, knowledge acquisition, and species population monitoring and inventory, vital data are obtained to particularly safeguard plant and animal species.

The collection is available at the Boutique Nature shop.

**BOUTIQUE NATURE**  
Parcs Québec

**FONDS**  
Parcs Québec  
fondsparcsquebec.com



# A PARK WITH A PURPOSE!

## Parc national de la Pointe-Taillon: land born of water

### A land of many faces

Pointe-Taillon does not mean the same thing for everyone. For some, it is a place for swimming where the warm waters and wide-open spaces promise perfect relaxation. Others prefer the bike path that meanders through the practically flat park, for sports activity in a quality natural environment. For those notorious early risers who are passionate about Pointe-Taillon, the milieu offers countless opportunities for wild-life observation. But everyone agrees the Pointe is invaluable since it has become one of the territories the Québec Government has committed to protect over the long term, for us all, and for future generations.

### The conservation strategy

Creating parks dedicated to heritage conservation is not a haphazard affair. A total of 43 natural regions subdivide the province of Québec into so many territories, each with its own characteristics. The goal is to protect samples of these vast natural regions, along with exceptional sites, from any and all types of resource harvesting, in an effort to let nature develop at its own pace. Access is allowed for educational and recreational purposes. Authorized activities in the protect-

ed territories are strictly defined and supervised to keep from hindering the conservation effort.

### The natural region of the Saguenay–Lac-Saint-Jean lowlands

The Saguenay–Lac-Saint-Jean lowlands are in fact a large rift in the Canadian Shield. Lac Saint-Jean occupies the centre of the depression. Vast sandy deltas were deposited at the mouths of the rivers that empty into the lake. The climate is milder than in the highlands surrounding the basin and several peat bogs thrive in the area. The vegetation is comprised of southern-type species (elms, maples). The wildlife stands apart with plant and animal species associated with a marine incursion that occurred at the end of the last ice age.

### La pointe Taillon

Pointe-Taillon possesses the major traits of the region around it. It is a segment of the Rivière Péribonka delta and is entirely made up of sand. Thin woodlands surround the peninsula, while the interior contains a large peat bog and abundant wetlands. In fact, the ponds, swamps, marshes, and peat bogs are all added features of nearby Lac Saint-Jean and the Rivière Péribonka.

### A crucial wildlife habitat

Numerous animals have made the park their home. While human activity carries on all around, the park is an island where nature evolves at its own pace. Many animals whose habitat is largely reduced find room to complete their entire life cycle. Others, like wild geese, moose, and otters, only use the park part of the year, or stay but cover so much territory that they sometimes wander outside the protected zone. Having access to such a milieu for recreational activities is a great privilege that must be exercised with the utmost care and respect.

The stars of the park are the beaver and the moose. Seeing signs of their presence or having a chance encounter are common occurrences in the park. You could also spot porcupines, red foxes, wolves, black bears, otters or Canada lynx, as well as many species of birds, amphibians, and reptiles that make the park their permanent or occasional home. And there are those that lead a very discreet life, so discreet, in fact, that new species are added to our inventories every year. We must admit that what goes on inside park territory is still largely unknown. One more reason, if those above are not already enough, to take great care when using the park.

## Making the Most of Nature Without Spoiling It!

The following is a list of the main authorized activities in the park, and a few notes about regulations.



- On the bike path only (see park map on p. 8)
- At all times, follow the highway traffic act when riding on the bike path



- On the bike path and on the sandy shore (see park map on p. 8)
- Year-round



- Lifeguard on duty during high season only



- Anytime



- Along the bike path and on the brach



- Access rights are also mandatory in winter



- Access rights are also mandatory for boaters



- Marked roads, marked parking facilities



- Year-round



- In the designated facilities only (Les Castors, Les Migrateurs, Le Prospecteur, Pointe-Chevrette, and Île-Bouliane campgrounds)
- End of May to mid-October



- Authorized only in designated areas. Fires are prohibited (with or without a fire screen) in the park whenever the Société de protection des forêts contre le feu (SOPFEU) prohibits open fires.



- Off-road vehicles and snowmobiles are strictly prohibited

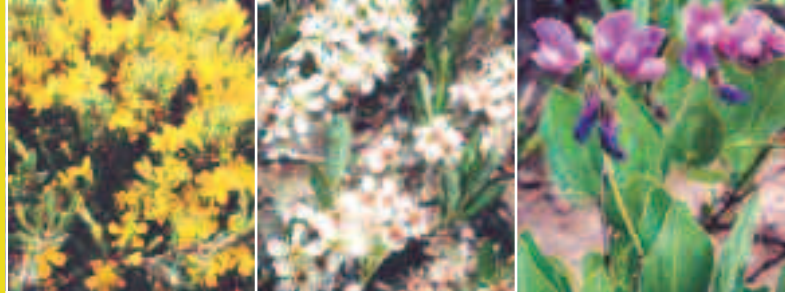


- Hunting and trapping are strictly prohibited
- Carrying arms, and hunting and trapping equipment are strictly prohibited

➤ Obtain your access right. It is mandatory and you may be asked to show it at any time of year.

Failure to follow regulations could lead to penalties.

# RELICT PLANTS: TRACES OF AN ANCIENT SEA



## RELICT\* YOU SAY? WHAT CAN THAT POSSIBLY MEAN?

The term relict is used to refer to surviving remnants of natural phenomena, a botanical heritage in this case. Here is their story, briefly.

### Going back in time

First of all, try to imagine the Lac Saint-Jean environment ten thousand years ago. The remains of an immense glacier sit nearby, just north of the lake. The waters streaming into the Lac Saint-Jean basin actually come from huge flooding rivers, carrying with them large amounts of sediments that accrete at the mouths of the rivers. And Pointe Taillon? Well, it simply does not exist yet. It is progressively forming under water, where the Rivière Péribonka meets the Laflamme Sea.

The footprint of the glacier is still noticeable on the relief, which has been crushed to below sea level. Seawater has flooded the lands around the basin and created a marine environment within the confines of the Canadian Shield. Plants associated with sandy environments such as the seashore start to grow and to colonize the shoreline. Among these are the sand heather (*Hudsonia tomentosa*), a low-branched

shrub that forms low mounds on the sand, American beach grass (*Ammophila breviligulata*), a herbaceous plant that stabilizes shore sand with its roots, and the beach pea (*Lathyrus maritimus*), which forms pods, much like the peas found in our gardens.

Following the melting of the glacier, the relief starts to rise slowly, driving the marine waters towards the Saguenay valley. The marine environment is gradually replaced by fresh water, but the plants that bear witness to that era of upheavals still survive on the shores of Lac Saint-Jean, making up colonies of so-called "relict" plants.

### Plants under surveillance

Today, those astonishing plants bear the brunt of shoreline alterations and trampling. The relict plants found in Parc national de la Pointe-Taillon, discovered some time after the park was created in 1985, are subject to special conservation measures. The largest colony is located at the heart of the park's service area, where the beach activities are the most intensive.

In the 1990s, the employees decided it was time to take action. Rope fences have since been installed along the coastal dune that supports the relict plants. The initiative met

with great success and the protection zone was increased in size upon several occasions over the years due to the colony's expansion, and that of the dune also.

Monitoring the evolution of all the relict plant colonies is also being done by the park and park facility (rope fences, footbridges leading to the beach) conservation service.

\*Relict: A community or species which, through the operation of some compensatory or protective environmental feature has survived some major change, e.g. climatic, land-use, that has altered the general vegetation of the surrounding territory (Office de la langue française).

Relic: An almost extinct surviving species of very ancient origin and which only occurs in limited areas (Office de la langue française).

Species of fish that also bear witness to the marine invasion of Lac Saint-Jean:

- Ouananiche (Atlantic salmon) (*Salmo salar*)
- Atlantic tomcod (*Microgadus tomcod*)
- Rainbow smelt (*Osmerus mordax*)
- Threespine stickleback (*Gasterosteus aculeatus*)

**JARDIN SCULLION**  
25 ANS

**TRULY IRRESISTIBLE!**

EXCEPTIONAL GARDEN  
CHILDREN'S GAMES  
PETTING FARM  
GUIDED FOREST TOURS

OPEN IN THE EVENINGS FOR GROUPS OF 30 PERSONS AND MORE  
LESS THAN 20 MINUTES FROM POINTE-TAILLON PARK

418 347-3377 1985, RANG 7 OUEST, L'ASCENSION WWW.JARDINSCULLION.COM



# AN ENDANGERED PARK?

## A lakeshore environment

As you know, Pointe-Taillon extends into the waters of Lac Saint-Jean. In summer, it is a dreamscape with its endless, fine-sand beaches. It's enough to make you wonder what time the tide comes in!

## A very fragile peninsula

The sandy composition of Pointe-Taillon makes it a very fragile environment. Entirely made up of sand carried by the Rivière Péribonka, the Pointe was formed at the end of the last ice age. The sand foundation responds to and is shaped by the flowing waters. Before the industrial age, sediments were deposited on the Pointe and its shores were eroded solely by the forces of nature. Year after year, the Rivière Péribonka accreted new sediments along the shores of the Pointe, while the movement of the waves removed some of the sand and carried it to other shores. However, since the Rivière Péribonka has been dammed and the lake maintained at a controlled level for hydropower generation, the natural dynamics have been altered.

## Hungry waves

The changing morphology of the Pointe-Taillon shores has gone from a natural phenomenon to one that can also be attributed to human intervention. The Lac Saint-Jean waterline, maintained unnaturally high in the fall, causes the active erosion of the Pointe-Taillon shores during storms. Waves hit the embankment and carry the sand away. The low sedimentation rate is not enough to counterbalance the phenomenon.

Every year, the Pointe Taillon shores are slightly altered and several areas end up with a net loss of shore material. The consequences of such remodelling are, particularly, alteration of the vegetation along the shoreline and threatened wildlife habitats like the forest ponds and peat bogs.

## Using rocks to counter the waves

You may have noticed rock formations in certain areas of Pointe-Taillon. These are manmade structures designed to slow erosion locally. These stabilizing structures (ripraps and revegetation) were put in place in cooperation with Rio Tinto Alcan in an effort to protect the threatened wildlife habitats and facilities. Other similar interventions will also be required over the years. But are rock shields really a solution for the conservation of natural spaces?

## A daunting problem, a conservation challenge

Countering erosion at Pointe-Taillon requires a great deal of brainstorming in terms of environmental and landscape conservation. Installing r ripraps (rock shields) is an efficient solution, but which dramatically alters the landscape, the shoreline, and causes colonies of rare plants to disappear. In addition, this greatly complicates access to the shores for large animals as they have to negotiate huge slabs of rock.

## Monitoring erosion

Since 2002, a shoreline erosion monitoring program has been implemented by the park. A

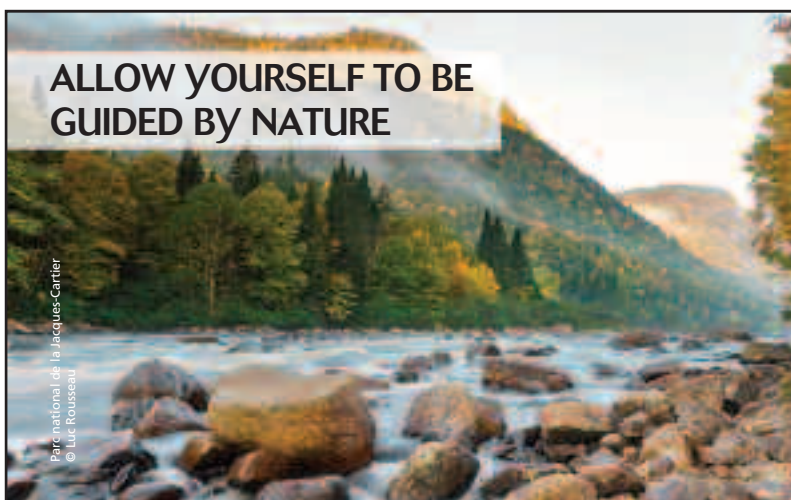
system of 115 boundary marks has been installed on the shores around the park in order to measure shore recession and thus gather invaluable data on the phenomenon. Since the start of the program, an annual average shore recession of 0.2 metres has been recorded around the park. And while some areas have not eroded since the program began, others have been severely affected with 10 to 15 metres of erosion... cause for grave concern!

## The search for solutions

Shoreline erosion at Pointe-Taillon is a continuous process that progressively eats away at the territory. In the light of the recorded data, new, top-priority remedial actions will be put in place in an effort to preserve park sectors thought to be at great risk.

*Île Bouliane has only been in existence a short time. It became separated from Pointe-Taillon following the harnessing of Lac Saint-Jean as a hydropower reservoir in 1926.*

*Colonies of rare plants adapted to sand grow on the shores of Pointe-Taillon. Shoreline erosion, stabilization work along the shores, and trampling threaten their existence. The park is a shelter for these plants, considered rare in the Lac Saint-Jean area.*



**ALLOW YOURSELF TO BE GUIDED BY NATURE**

Parc national de la Jacques-Cartier  
© Luc Rousseau

The outfitters, members of Aventure Écotourisme Québec, in collaboration with the Sépaq, offer you several stays and guided activities specially conceived to have you discover exceptional natural spaces.

AEQ groups together more than one hundred producers in adventure tourism and in ecotourism that join forces to offer you high-quality products.

Consult the Association's website for planning your guided activities in Sépaq's national parks.



[www.quebecadventure.ca](http://www.quebecadventure.ca)

# PROJECT TO EXPAND THE NATIONAL PARK

## A LOCAL INITIATIVE

The proposal to expand the park was filed by the regional county municipality of Lac-Saint-Jean-Est with the Ministère du Développement durable, de l'Environnement et des Parcs (MDDEP) in May 2006, with the aim of realizing an ecotourism project.

### PUBLIC ISLANDS

The Parc national de la Pointe-Taillon expansion project encompasses some thirty islands along the eastern shore of Lac Saint-Jean within the limits of the municipalities of Alma and Saint-Gédéon. The main islands in this archipelago include Grosse and Petite île Verte, Île Beemer, Île Connelly, Île à Tremblay and Île des Cauchon. Numerous islets, shoals and bare rocks lie scattered among these islands. The archipelago, which is 3 km at its widest, extends almost 20 km from north to south.

### THE SITE OF THE OLD TOWING CAMP

Covering 11 hectares, the old towing camp is located in Saint-Gédéon. It can be reached by boat, by the Rang des Îles or the Véloroute des Bleuets. It is bounded to the west and south by Lac Saint-Jean, to the north by Pointe Maltais and to the east by the Véloroute.

### LOTS 4, 5, 6 AND 7 ON RANG A

This is the Centre plein air Les Amicaux, in the Municipality of Saint-Henri-de-Taillon. It is located next to the Belley campground.

### THE NEXT STEPS

- The MDDEP will submit the proposed modification to the park boundaries to Cabinet in view of modifying the Regulation respecting parks.

- The MDDEP will turn the operation of this new territory, which will be part of Parc national de la Pointe-Taillon, over to Sépaq.

At the time of printing, these step were not yet completed, but we expect new developments very soon!



## NEW FOOD SERVICES

### Discovery and Visitors Centre

- Sandwiches
- Wholesome choices
- Local products
- Lunch boxes (prepare your own)
- Beverages, juice, coffee, beer and wine
- Frozen products



# LES AMICAUX SECTOR

95, CHEMIN BELLEY



Until the official expansion of the park, the park team has been operating the Centre plein air Les Amicaux since the Ministère du Développement Durable, de l'Environnement et des Parcs (MDDEP) asked Sépaq to manage the site in 2010.

## SERVICES

- Lac Saint-Jean access (there will be no lifeguard on duty in 2013)
- Room rental
- Bike rental
- Cottage rental (n°. 1 and 2) for 2 or 4 people
- Huttopia tent Ready-to-Camp (n°. 201 to 205)

The Annual Park Card or the Parcs Québec Annual Network Card is accepted (see page 2). There is no parking fee this year because there will no longer be a lifeguard on duty.

The Véloroute des Bleuets was relocated in Fall 2010 and now runs through this sector. The distance from the Centre plein air Les Amicaux and Parc national de la Pointe-Taillon is 6 km by bike.



Huttopia

Photo: Dominic Boudreault

## A PARCS QUÉBEC'S EXCLUSIVE!

Discover the **Huttopia tent**, a simple and comfortable way to discover the joys of camping without all the lugging.

Each unit includes:

- two big beds
- supplementary heating and lighting
- a propane-operated warming tray and a mini-fridge
- everything you need to prepare meals



**2013 SEASON**  
80 new tents

**2 new destinations:**

- Îles-de-Boucherville
- Lac-Témiscouata

LOW SEASON <sup>(1)</sup> : \$99/night  
HIGH SEASON <sup>(2)</sup> : \$116/night

Capacity of 5 people (max. 4 adults)

(1) From Sunday to Thursday until June 20, 2013 and from September 8, 2013.

(2) Fridays, Saturdays, holidays and every day from June 21, 2013 to September 7, 2013. Taxes and entrance fee not included

Online reservation: [parcsquebec.com/huttopia](http://parcsquebec.com/huttopia)

**Alimentation St-Henri**  
*Un centre de services!*

418 347-2190  
Saint-Henri-de-Taillon

[alimentationsthenri.com](http://alimentationsthenri.com)

**Auberge Presbytère**  
Mont-Lac-Vert

Tel: 418 344-1548  
Sans frais: 1 800 818-1548  
Téléc: 418 344-1013

Chambres  
Salle à manger  
Salle de réception avec bar et foyer  
Relais de motoneige

Danielle Caron  
et Robert Blodoin

[www.aubergapresbytere.com](http://www.aubergapresbytere.com)  
aubergapresbytere@qc.ca 418.344.1548  
356, Rg Lac-Vert, Hébertville (Qc) G8N 1M1



# NATURE CALENDAR



## January – February:

- The lake is a vast, immaculate expanse upon which the sunshine reflects. Winter is harsh, but so beautiful!
- Did you know that Lac Saint-Jean is covered by over one metre of ice at this time of year?
- The wind is cold, but the sun warms the skin. A snowshoe outing will reveal moose tracks marking the presence of these large animals that winter on Pointe Taillon.

## March:

- Black-capped chickadees launch their mating calls in the frigid air. Are they already seeing signs of spring?

## April – May:

- Spring peepers and wood frogs start to sign, celebrating the emergence of spring.
- The air fills with the chattering of thousands of wild geese. There is no doubt that spring is here!
- The lakeshore becomes exposed before the spring floods. It looks like low tide!

## May – June:

- What, the snow cover is back? The milkweeds is blooming in the peat bog.
- How could you miss the flowering of the sand cherry trees whose perfume fills the air at the start of the bike path ?

## June:

- From the vast expanses of the peat bog, sandhill cranes launch their grating calls, reminiscent of the dinosaur period. Now here is an uncommon auditory experience for early risers.

- The sand heather is blooming on Saint-Jean-Baptiste Day. Kneel down and smell the sweet fragrance of their tiny yellow flowers.

## July:

- Look! Baby beavers are splashing about in the ponds. How cute they are!
- And baby toads are emerging out of the water. Look out for collisions on the bike path!!

## August:

- See the blueberries? The tips of their noses are already turning blue.
- So many dragonflies... and butterflies! Isn't this paradise?

## September:

- A new generation of moose is about to be conceived. The males display their proud and impressive demeanour. But they are not fond of competition; let's watch from a distance... and quietly!
- Victims of teeth, trees are falling... renovations have begun on the beaver dams. How busy they are! Their survival is at stake as a long winter is surely coming.

## October:

- The geese are back. Destination ... South!

## November – December:

- The ice is slowly taking over the lakeshore. The monochrome landscapes do have their charm however.
- It seems as if time has stopped. And yet, what made those tracks in the snow?

**Poterie la Pipe d'Argile**

810, rang 3 Ouest  
418-347-3983

À 1.8 km de la plage du parc national de la Pointe-Taillon

[www.lapipedargile.com](http://www.lapipedargile.com)





430, rue Hôtel de Ville  
Saint-Henri-de-Taillon, Québec G0W 2X0  
Tél : 418 347-3243

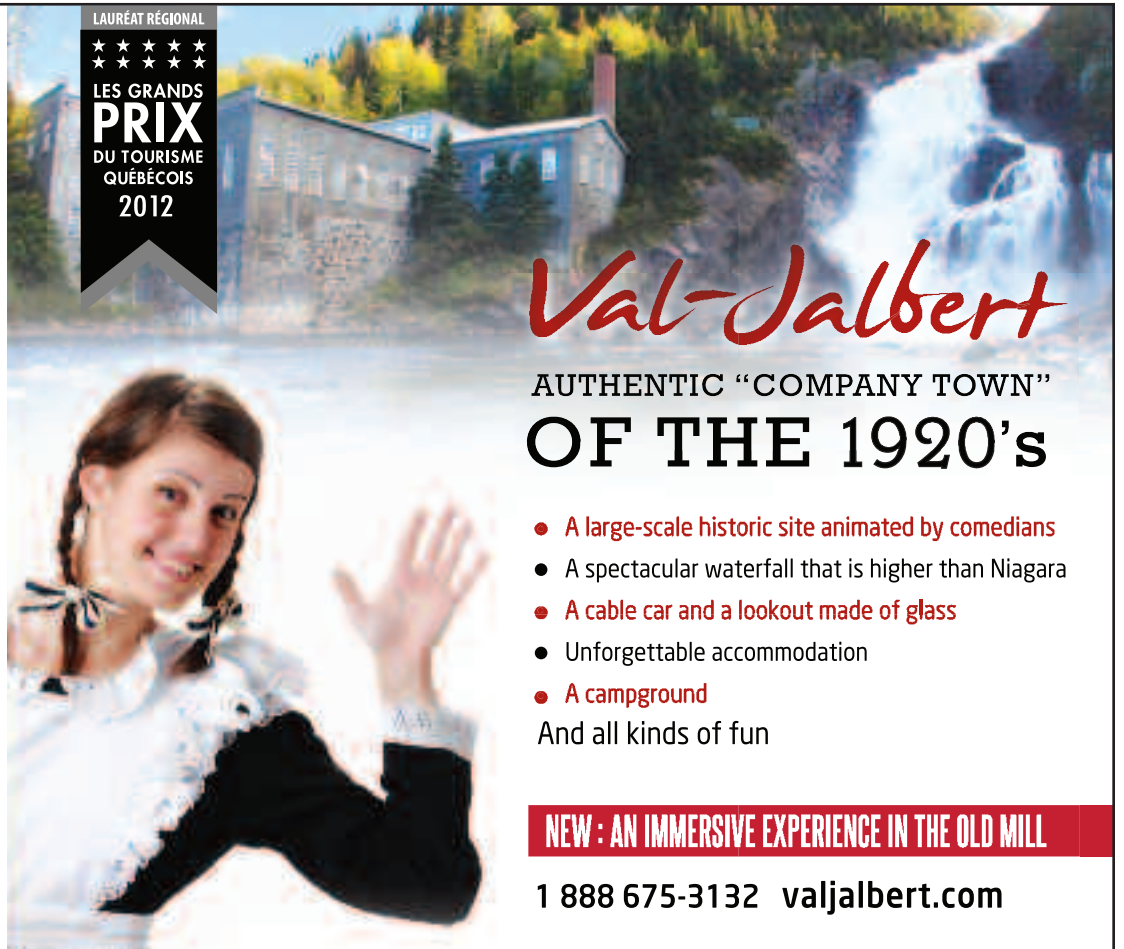


**MUNICIPALITÉ DE SAINT-HENRI-DE-TAILLON**

**TAKE  
PART IN  
HISTORY**

LAURÉAT RÉGIONAL

★ ★ ★ ★ ★  
★ ★ ★ ★ ★  
**LES GRANDS  
PRIX**  
DU TOURISME  
QUÉBÉCOIS  
2012



# Val-Jalbert

AUTHENTIC "COMPANY TOWN"  
**OF THE 1920's**

- A large-scale historic site animated by comedians
  - A spectacular waterfall that is higher than Niagara
  - A cable car and a lookout made of glass
  - Unforgettable accommodation
  - A campground
- And all kinds of fun

**NEW : AN IMMERSIVE EXPERIENCE IN THE OLD MILL**

1 888 675-3132 [valjalbert.com](http://valjalbert.com)

The Véloroute des bleuets is more than a bike path...

**it's an ADVENTURE!**



[veloroutedesbleuets.com](http://veloroutedesbleuets.com)



**Parc national  
de la Pointe-Taillon**  
*Protect and Discover*

835, rang 3 Ouest  
Saint-Henri-de-Taillon (Québec) GOW 2X0  
Phone: 418 347-5371  
Fax: 418 347-2134  
Reservation : 1 800 665-6527  
E-mail: [parc.pointe-taillon@sepaq.com](mailto:parc.pointe-taillon@sepaq.com)  
Website: [www.parcquebec.com](http://www.parcquebec.com)

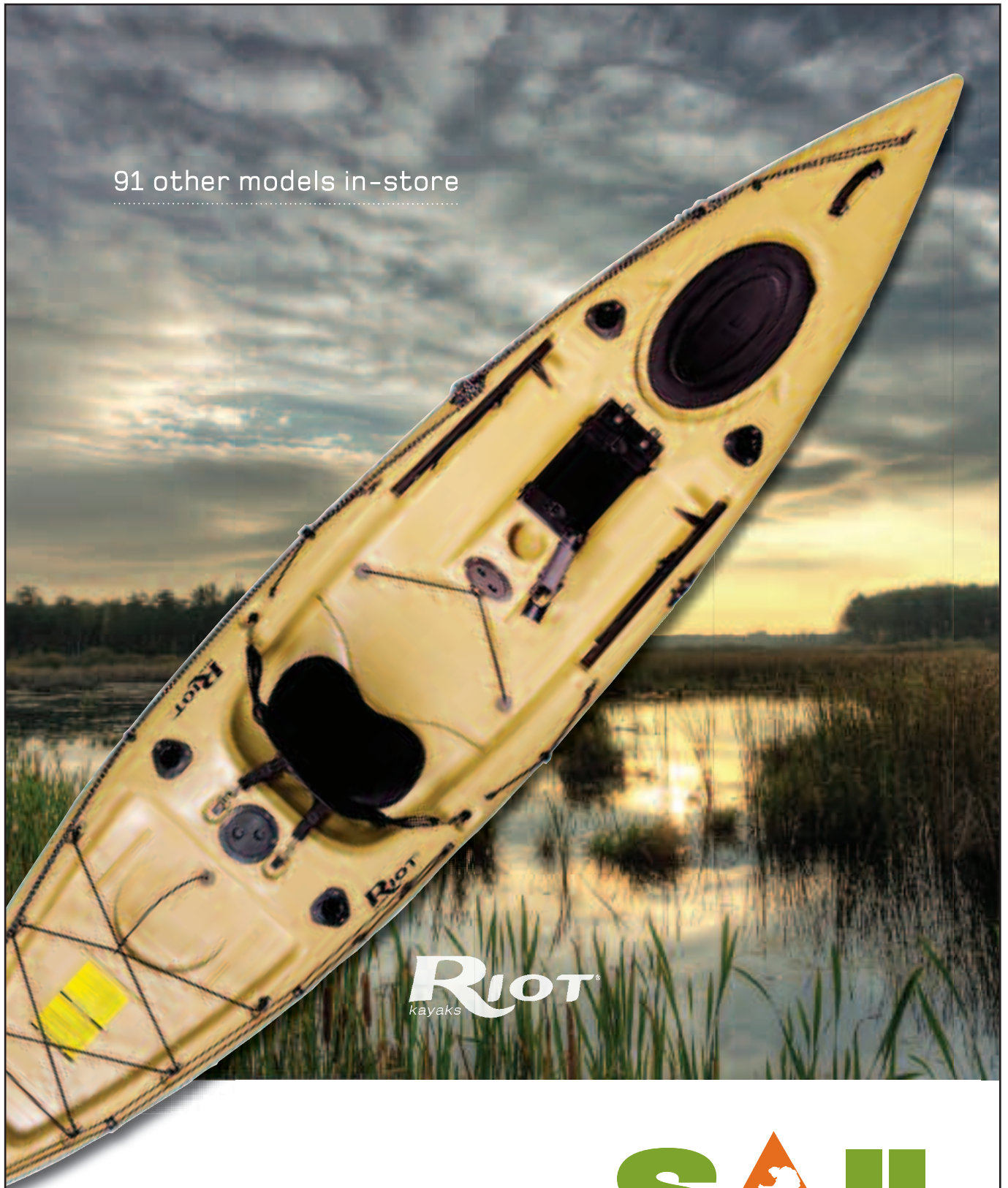
This Park Journal is published by Parc national de la Pointe-Taillon (Parcs Québec), under the supervision of the Société des établissements de plein air du Québec.  
Editing: Dominique Crépin, Jean Larouche and François Guillot  
Text editing: Denise Bellavance  
Revision: Diana Cline  
Graphic Design and Layout: Imag'in création graphique  
Photographs: parc national de la Pointe-Taillon, Maurice Pitre (Enviro Foto), Jean-Sébastien Perron, Francis Doucet, Mathieu Dupuis, Annie Fournier, François Guillot, Dominique Crépin and Jocelyn Claveau.

This document was printed on 100% recycled paper made in Québec, containing 100% post-consumption fibres and produced without using elementary chlorine. The inks used for this production contain vegetable oils.



*The prices, terms and services mentioned in this newsletter are subject to change without notice.*

91 other models in-store



**Riot**  
kayaks

**SAIL**

**THE OUTDOORS SUPERSTORE**

BELOEIL - BROSSARD - BURLINGTON - ETOBICOKE - LAVAL - OSHAWA - OTTAWA - QUEBEC - VAUGHAN