

MANOIR RICHELIEU

R & O HOTELS



MANOIR

RICHELIEU

TADOUSAC

HOTEL



THE LOWER ST. LAWRENCE  
AND THE SAGUENAY

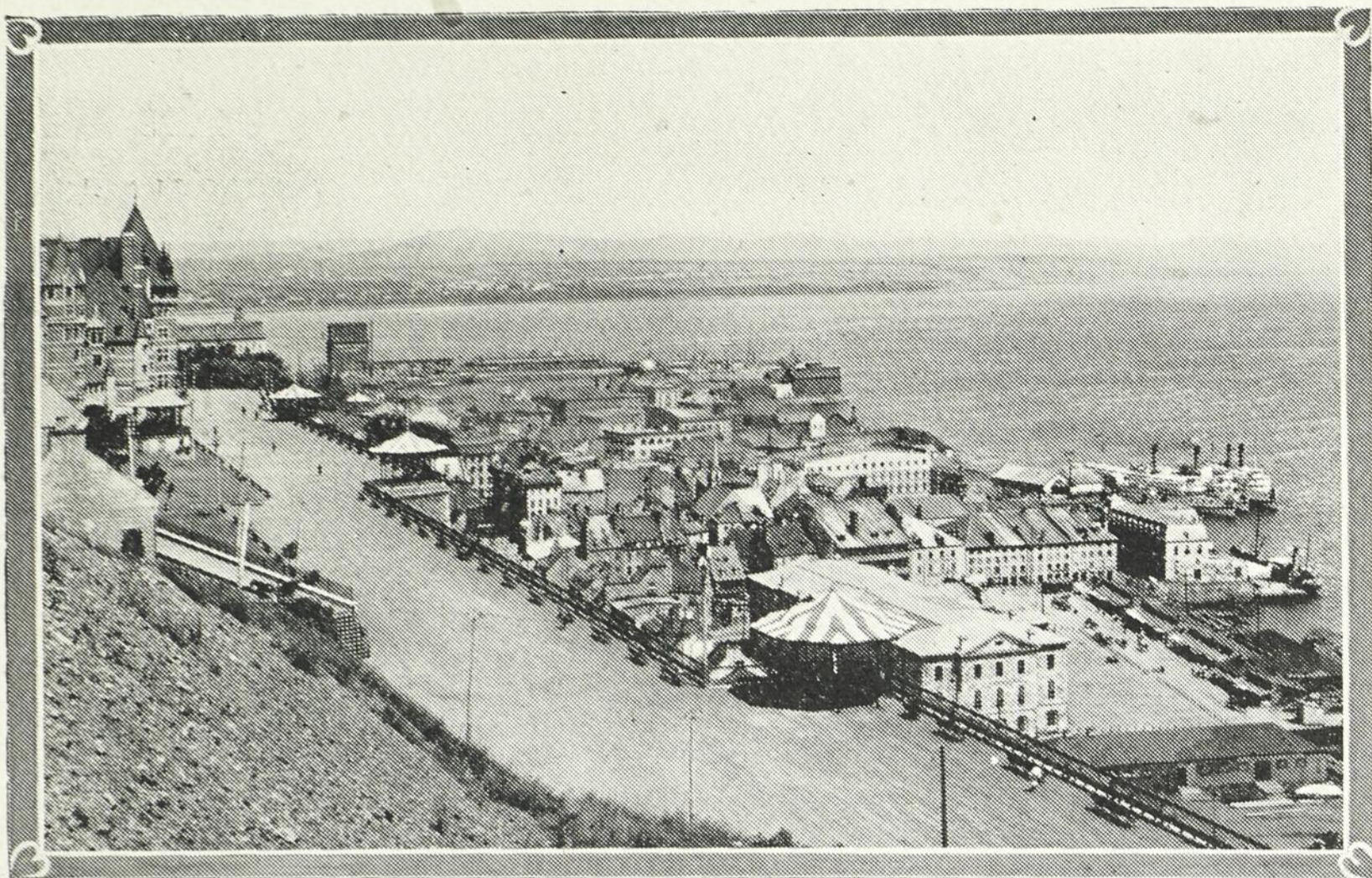
112848



Manoir Richelieu, Murray Bay.



Tadousac Hotel, Tadousac, Que.



The City and Citadel of Quebec

## Where Sea Breezes Mingle with the Pines

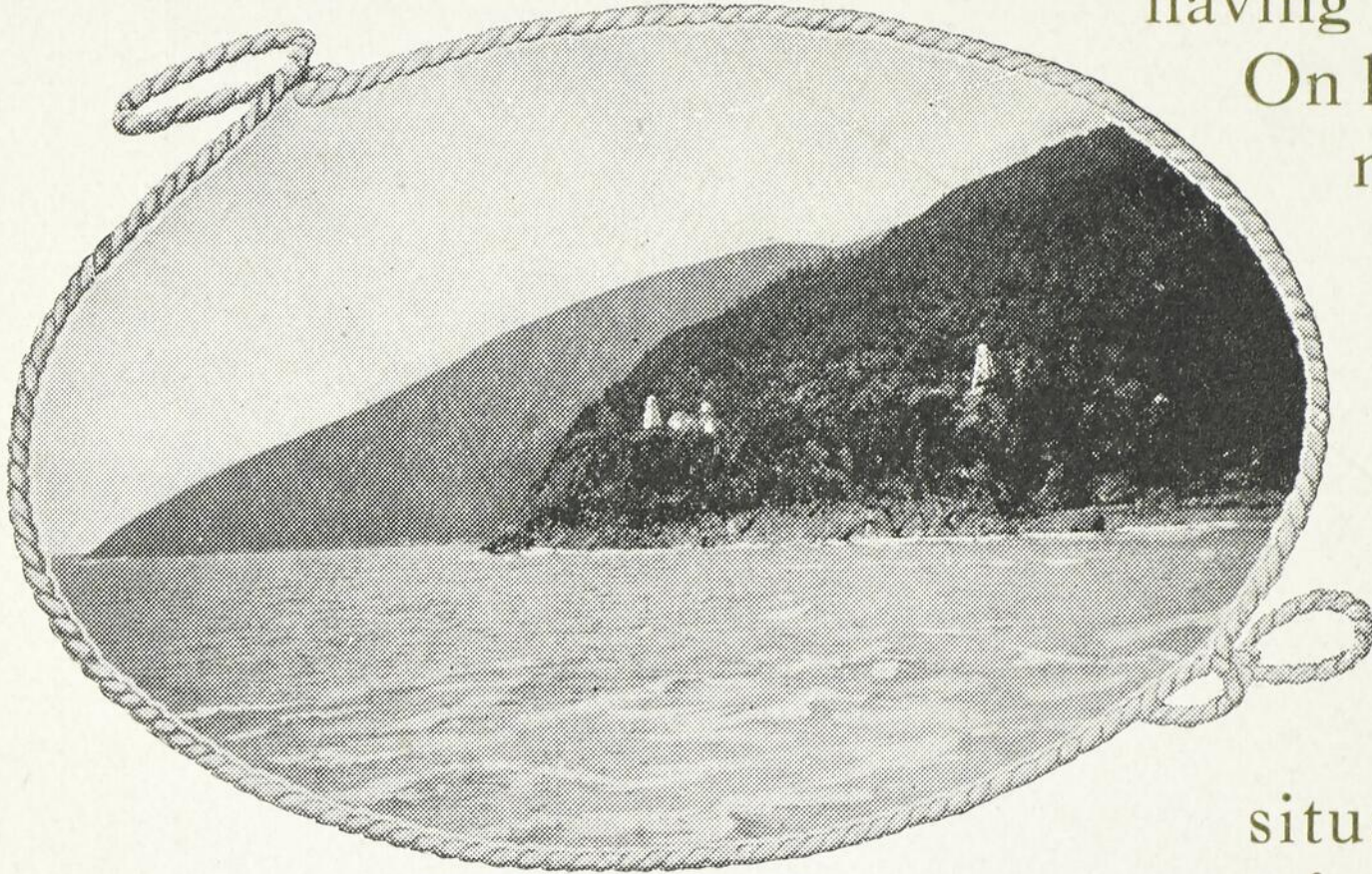
**A**LTHOUGH the great St. Lawrence river flows from "Niagara to the Sea," it is only during the last few years that the rugged grandeur of its lower stretches has been brought to the notice of the travelling public. From Quebec, the fortress city, with its ancient walls and gates, this little booklet proposes to start.

Quebec was founded in 1608 by Samuel de Champlain. Old seminaries, churches, statues, quaint narrow streets, with gabled houses, vaulted inns and residences, with mediæval memories are vividly accentuated by contrast with its modern hotels, and crowds of twentieth century tourists.

The steamers of the Richelieu & Ontario Navigation Company leave Quebec for the Lower St. Lawrence at 8 a.m. ; breakfast being served on board.

Leaving Quebec, the Island of Orleans is passed, and one has a glimpse of Montmorency Falls on the left. Then, on the mainland, is St. Anne de Beau-pré, with its world-celebrated shrine ; and soon afterwards the steamer runs under the shadow of the towering, pine-covered, mountainous north shore,

and passes Cap Tourmente, Château Richer and Mount St. Anne. The first stop is made at Baie St. Paul—the scene of earthquake shocks some years ago. Two more stops are made before Murray Bay is reached—Les Eboulements and St. Irénée, both places growing in favor as summer resorts, the latter having a fine hotel.



Lighthouse on Cap Tourmente

On leaving St. Irénée the towers of the Manoir Richelieu gleam against the side of the high hill on which it is situated, and in a few minutes the

steamer is at Murray Bay wharf.

Of all the favorite summer resorts along the Lower St. Lawrence, Murray Bay is the most popular with the Canadian and American public. It is also one of the most picturesque and charming. If ever "extremes meet," they do here. On one hand, the simple, Old-World customs and manners of the villagers; on the other, the modern hotel and the numerous summer cottages. Adding to the charm of this delightful contrast is the bold grandeur of the surrounding scenery and the perfect climate of combined mountain and sea air. Here President Taft learned to play golf and spent many summers before being elected to the presidency of the United States.

Along the west shore of the bay are the "cottages;" then further back are two old seigniories which date back to the first real settlement in 1761, on the disbanding of the British army after the conquest. Further back is a Catholic church and the white cottages of Murray Bay village.

The Manoir Richelieu stands on a commanding bluff facing the river.

It is one of the few high-class, modern summer-resort hotels in America, handsomely furnished throughout, the effect being one of quiet elegance and comfort.

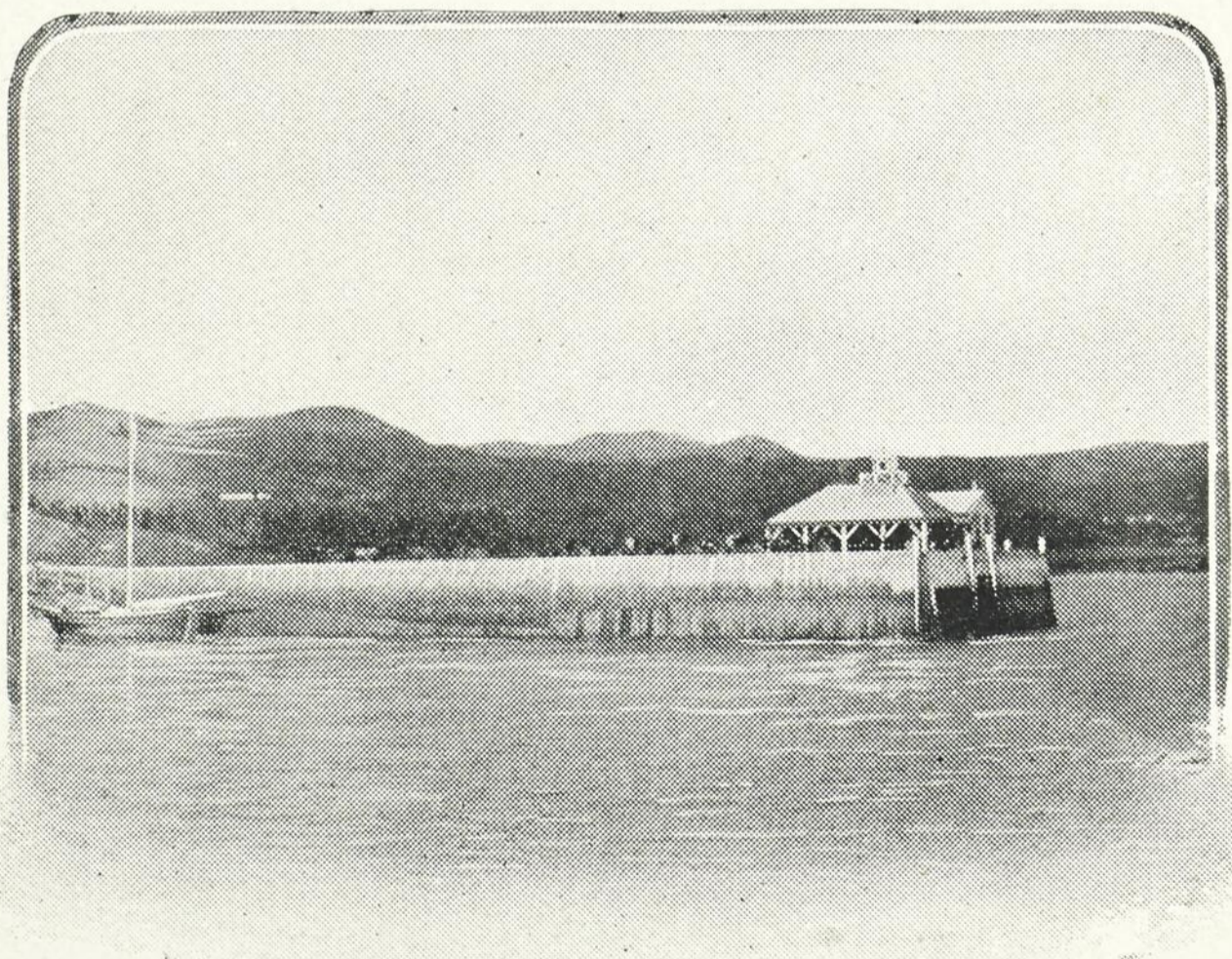
Its rotunda, drawing, writing and private dining rooms, with large open fireplaces, its spacious dining-room, halls and rooms, its broad covered veranda, 25 feet wide, and the fact that although it has 250 rooms, the hotel is spread out so that it has only two principal bedroom floors, impresses one with its generosity which is carried out also in the management.

Many of the bedrooms are *en suite*, with private baths.

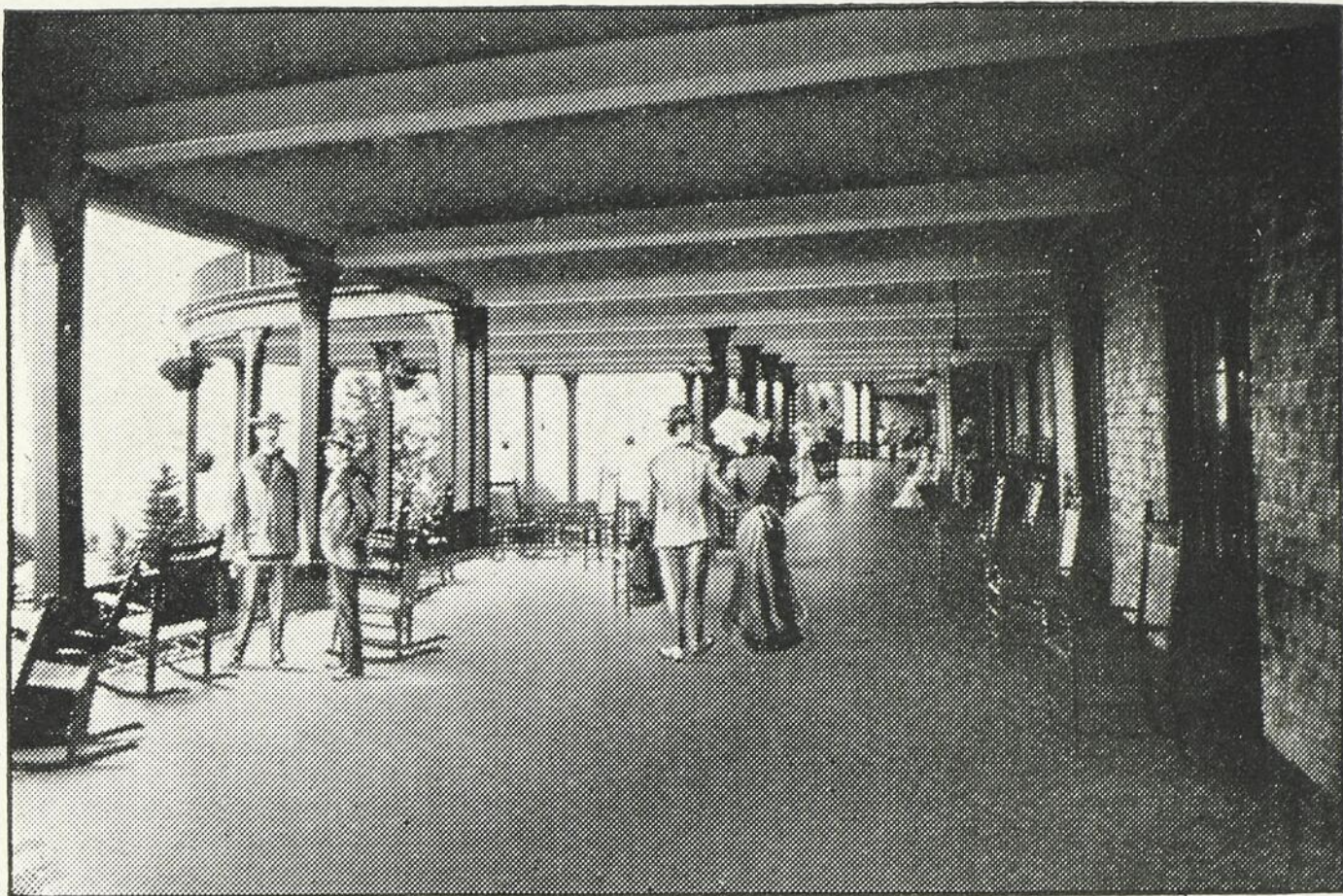
The Manoir Richelieu Swimming-pool is equal to any in the country. The salt-water of the St. Lawrence is pumped and heated to between 60 and 70 degrees. The entire pool is open to the sun. The dressing rooms have hot and cold shower baths, and over the dressing-rooms is an observation-gallery for guests to watch the swimming, water-polo or sports going on in the pool on one side and the bowling-alley on the other.

All the water used in the Manoir Richelieu for drinking and culinary purposes is absolutely pure mountain spring water.

At the foot of the lawn, with its tennis, croquet, etc., and along the top of the cliffs, a rustic promenade has been built, 14 feet wide; while here and there are secluded rustic summer-houses, which give commanding views of the river and moun-



Landing at Baie St. Paul



The Hotel Veranda

tains beyond.

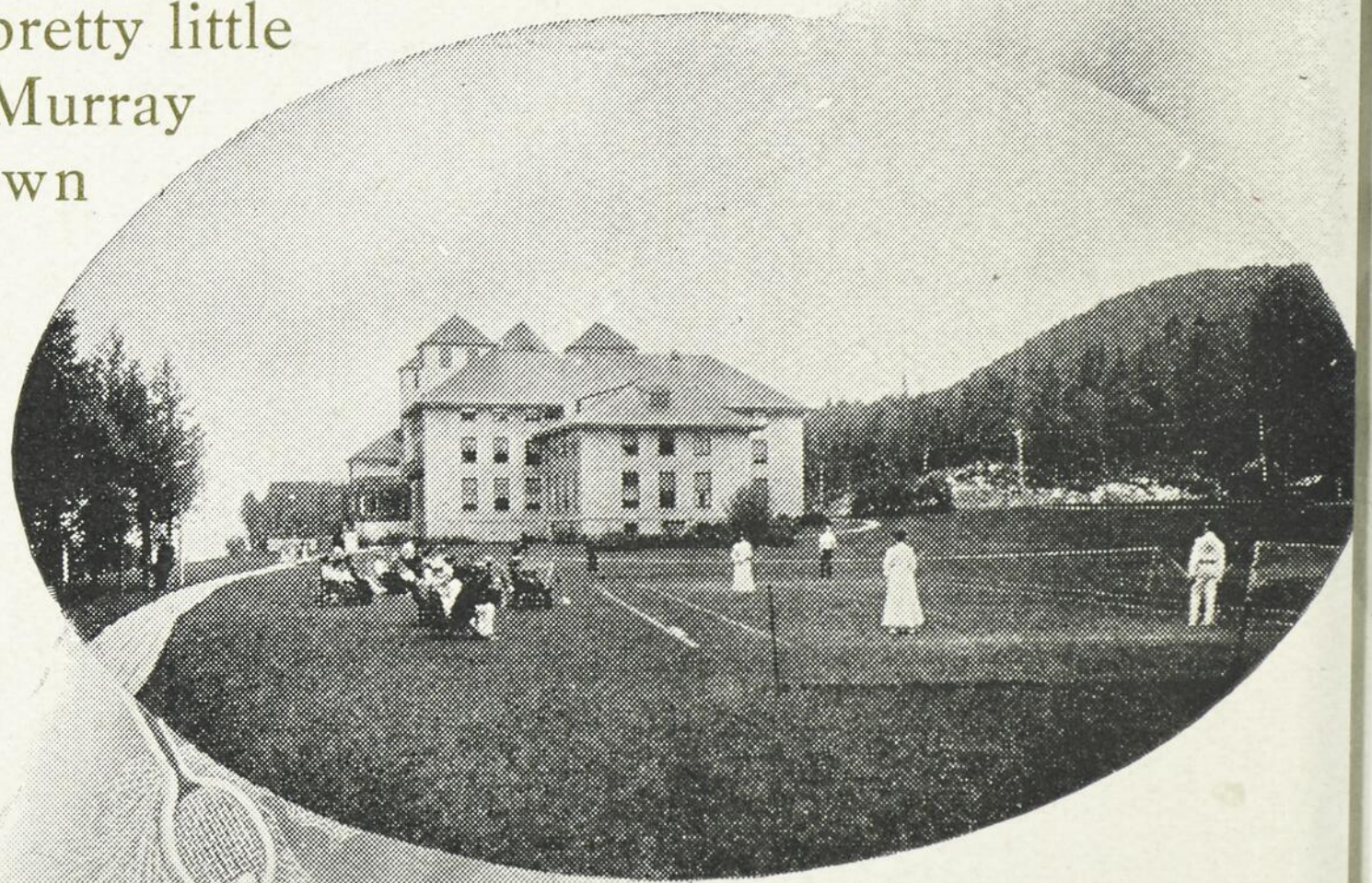
From this terrace a stairway leads to the beach.

On the other side of the hotel the Laurentian Mountains

begin at its very door, and the balsam, spruce and arbor vitæ woods fill the air with delicious and health-giving odors. To those inclined to wander within the depths of the woods these mountain trees furnish shade and fragrance.

Calèche-driving is a great amusement. For wild beauty the drive to the Upper Fraser Falls takes first place, the road leading through Murray Bay village, over the Murray river, and then heading right up the mountains. When the Fraser river is reached a path is taken through the woods to the Falls. The waters drop, in two wild leaps, 290 feet, and the sight is a most beautiful one. The same river has another fine fall of 150 feet, termed the Lower Fraser Falls. There is another pretty little fall on the Murray river, known as Nairn Falls.

In the month of August it is a great sight to see the salmon leaping this fall. A drive to



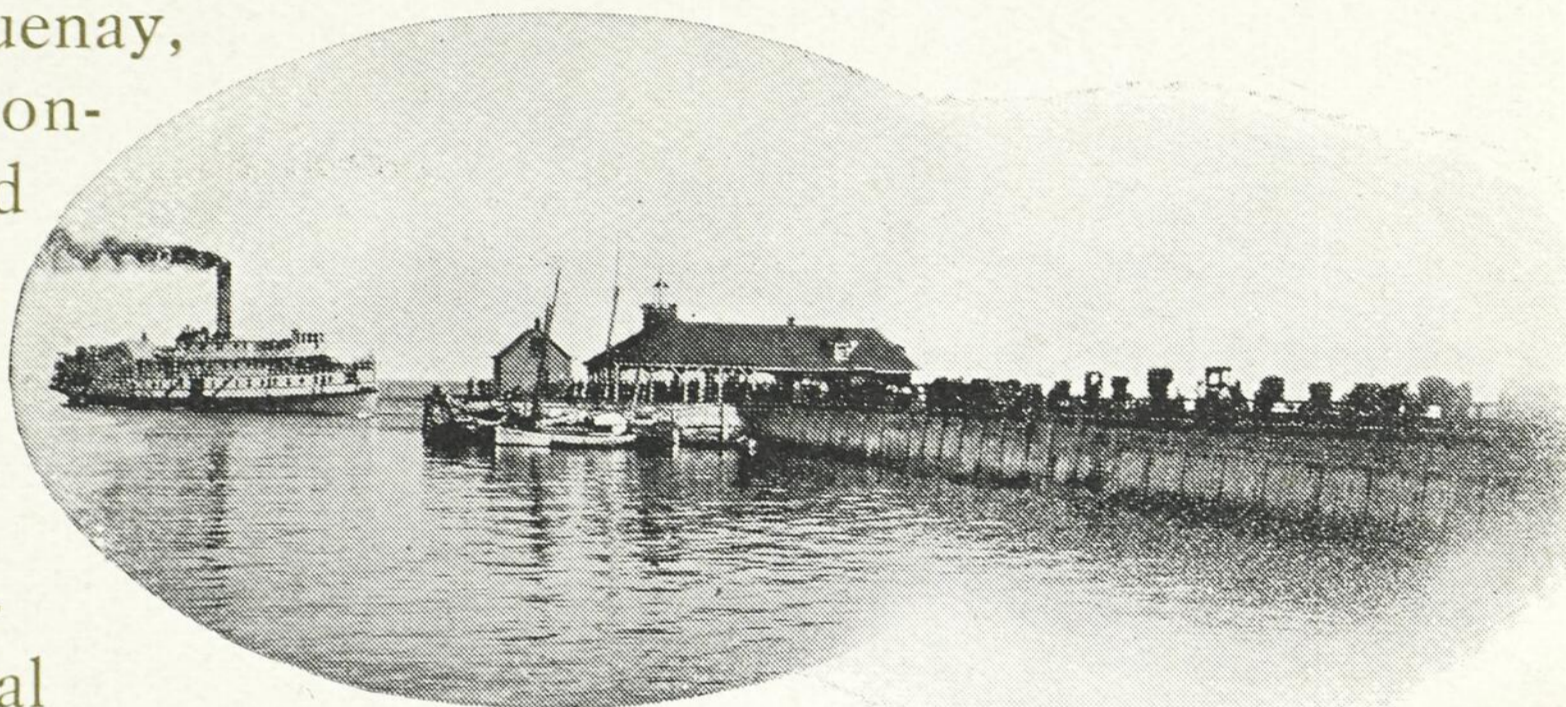
The Tennis Courts

Cap-à-l'Aigle should not be missed, as the road follows the coast and affords a splendid view of Pointe-à-Pic. A longer drive, but a very beautiful one, is to Grand Lac and Nairn Lake, situated beyond St. Agnès, in the mountains.

The steamer on leaving Murray Bay, crosses to Cap-à-l'Aigle, and an hour's sails brings us to St. Siméon, which is within reach of a number of fine trout-fishing lakes. From St. Siméon it is a two-hour's run to Tadousac.

Tadousac is the most beautifully situated resort on the Lower St. Lawrence. It overlooks the mouth of the Saguenay,

and is a wonderful old settlement, with enough eventful history to supply material for volumes.



Approaching Murray Bay Pier

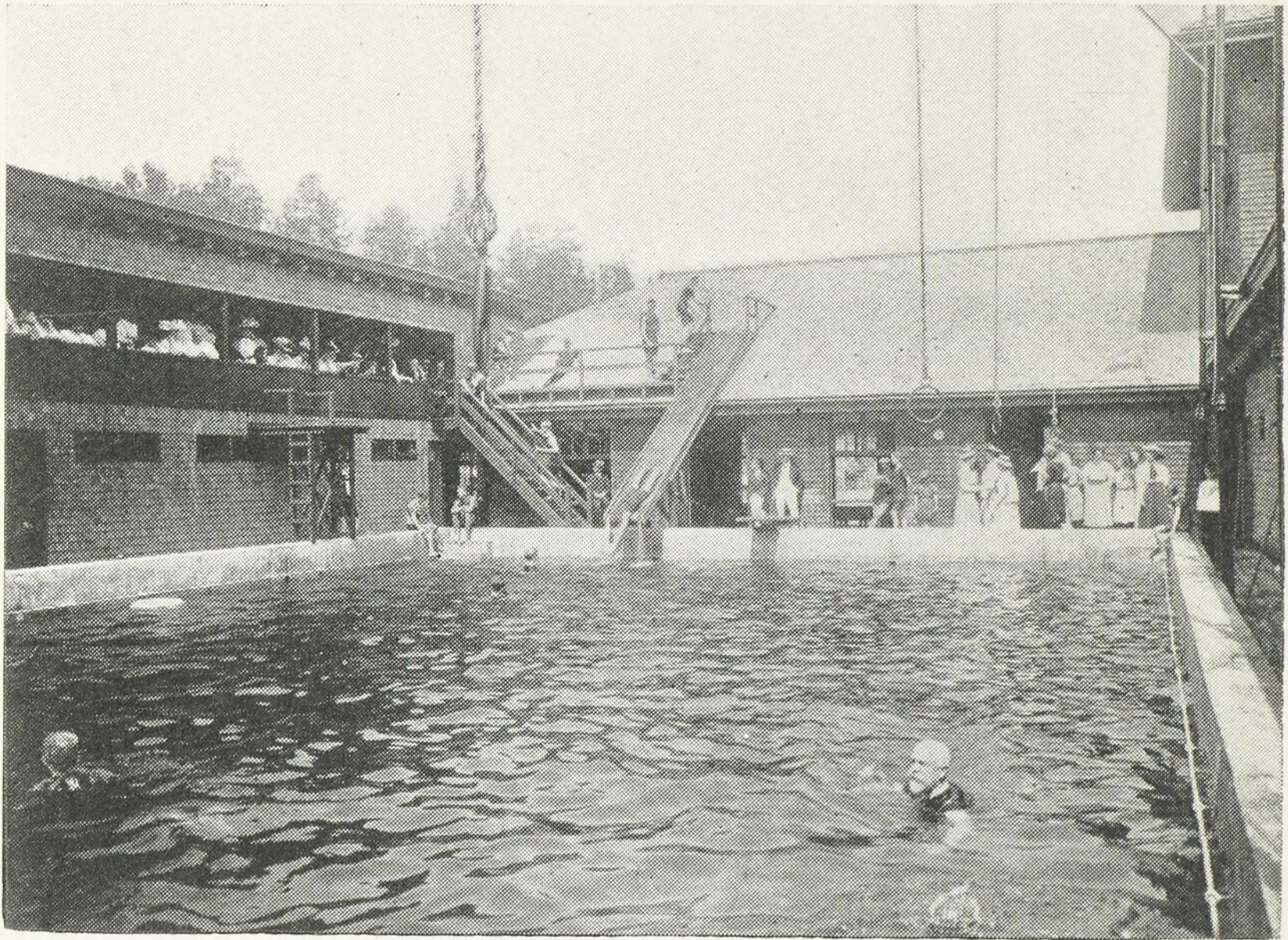
It was the first settlement and fur-trading post established by the French on the St. Lawrence. Here was erected the first church in Canada (1647). The original little church still remains standing, and the "Angelus" is rung out to-day with the same bell with which it was sounded 263 years ago.

The Government salmon-hatcheries and preserves being here, salmon in their natural element may be seen in the pool at the steamboat-landing, which confines in summer between 2,500 and 3,000 full-grown fish. The Marguerite river, the location of one of the wealthiest fishing clubs on the continent, is only sixteen miles distant by river, and is noted for its trout and salmon.

The fishing at Tadousac can hardly be excelled, and ranges from the "tommy-cod" for the children, to lake and brook trout. Five miles distant among the mountains, is the trout-fishing preserve of the

Richelieu & Ontario Company, whose exclusive rights extend over lakes Gobeil, Guillaume Bou langer, Sapin, Long and Trout, which abound with different species of gamey speckled trout, weighing up to five pounds. At the lakes is a fine large camp, with attendant servants and boats. The use of camp and boats is free to patrons of the hotel.

On drives and walks one sees thatched buildings and the housewife in the doorway, spinning or card-

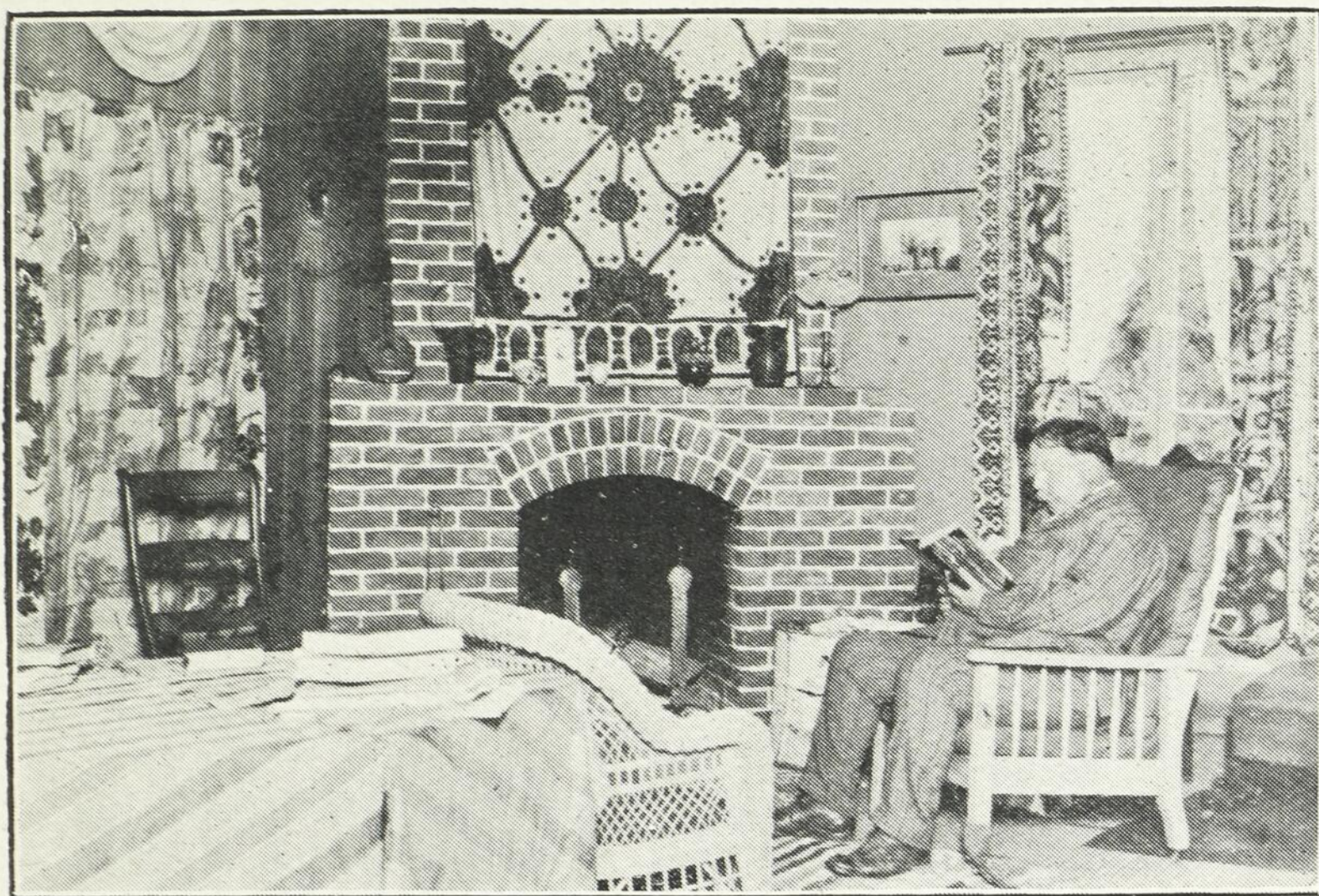


The Swimming Pool, Manoir Richelieu

ing and rocking the cradle, or from windows, comes the "chug-chug" of the loom.

Many trunks returning from Murray Bay or Tadousac contain homespun in some form, highly prized by its owner. Among the most sought after are dress patterns and couch and table covers and portières.

The Tadousac Hotel is a most comfortable, home-like and well-managed resort, with accommodation for three hundred guests, open from June 25th to September 10th. During the past winter it has been vastly improved and many rooms with private bath have been added. The rotunda is newly furnished, has open fireplaces, and its large windows overlook the bay, dotted by the silver gleam of white whales,



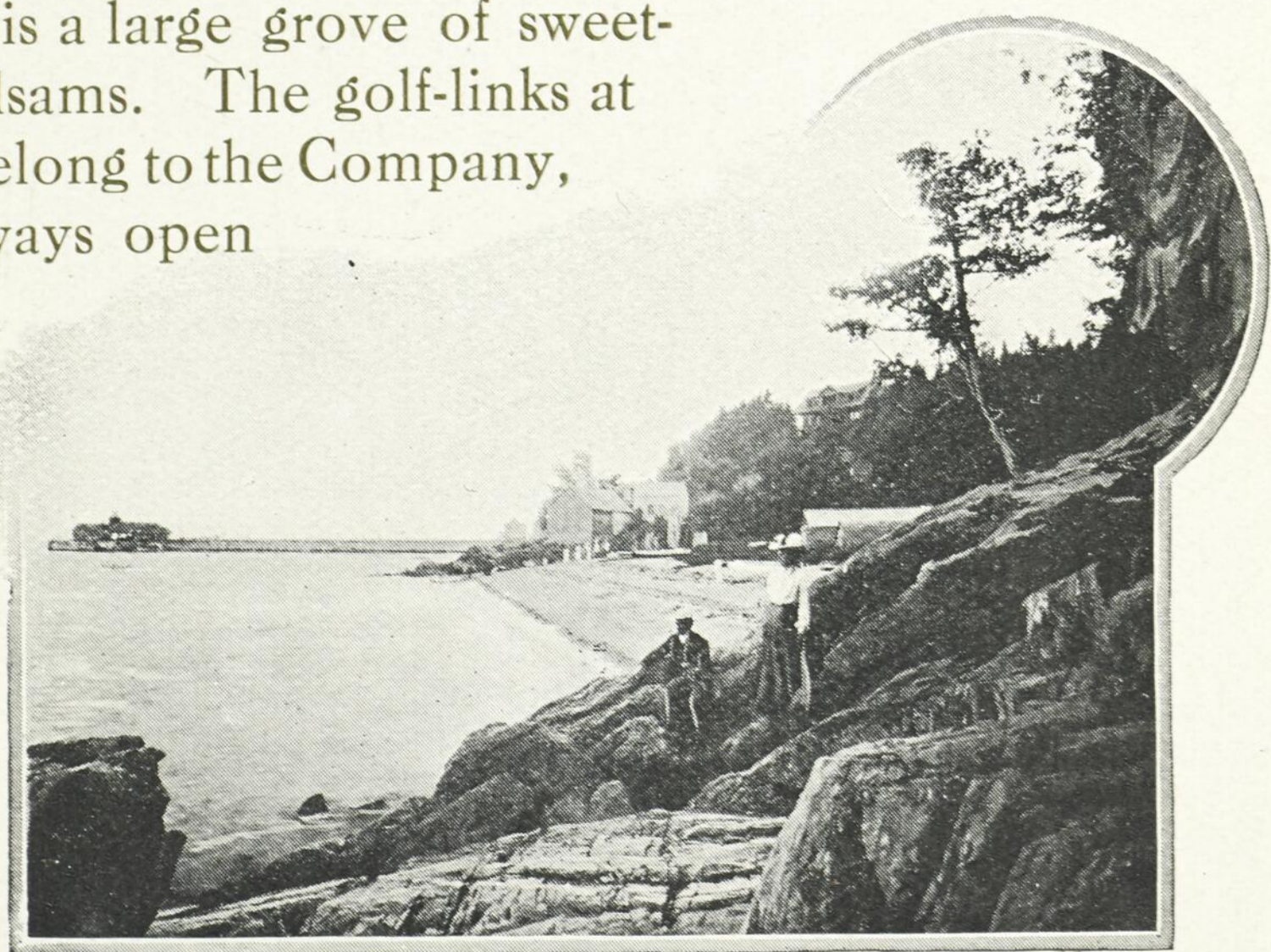
President Taft in his Cottage, Murray Bay

and across the St. Lawrence to its easterly shore (22 miles distant), with the mountains serrating the southeastern horizon.

A splendid orchestra furnishes music during the season. The dancing hall is large and airy with waxed floors.

A terraced lawn separates the broad verandas of the hotel from a magnificent sandy beach and bay, the latter a perfectly safe place for boating and canoeing; while over a foot-bridge crossing a mountain brook is a large grove of sweet-smelling balsams. The golf-links at Tadousac belong to the Company, and are always open

to guests of the hotel, while within the grounds are tennis, croquet, bowling, billiards and shuffle-board.



Pointe-à-Pic Beach and Pier

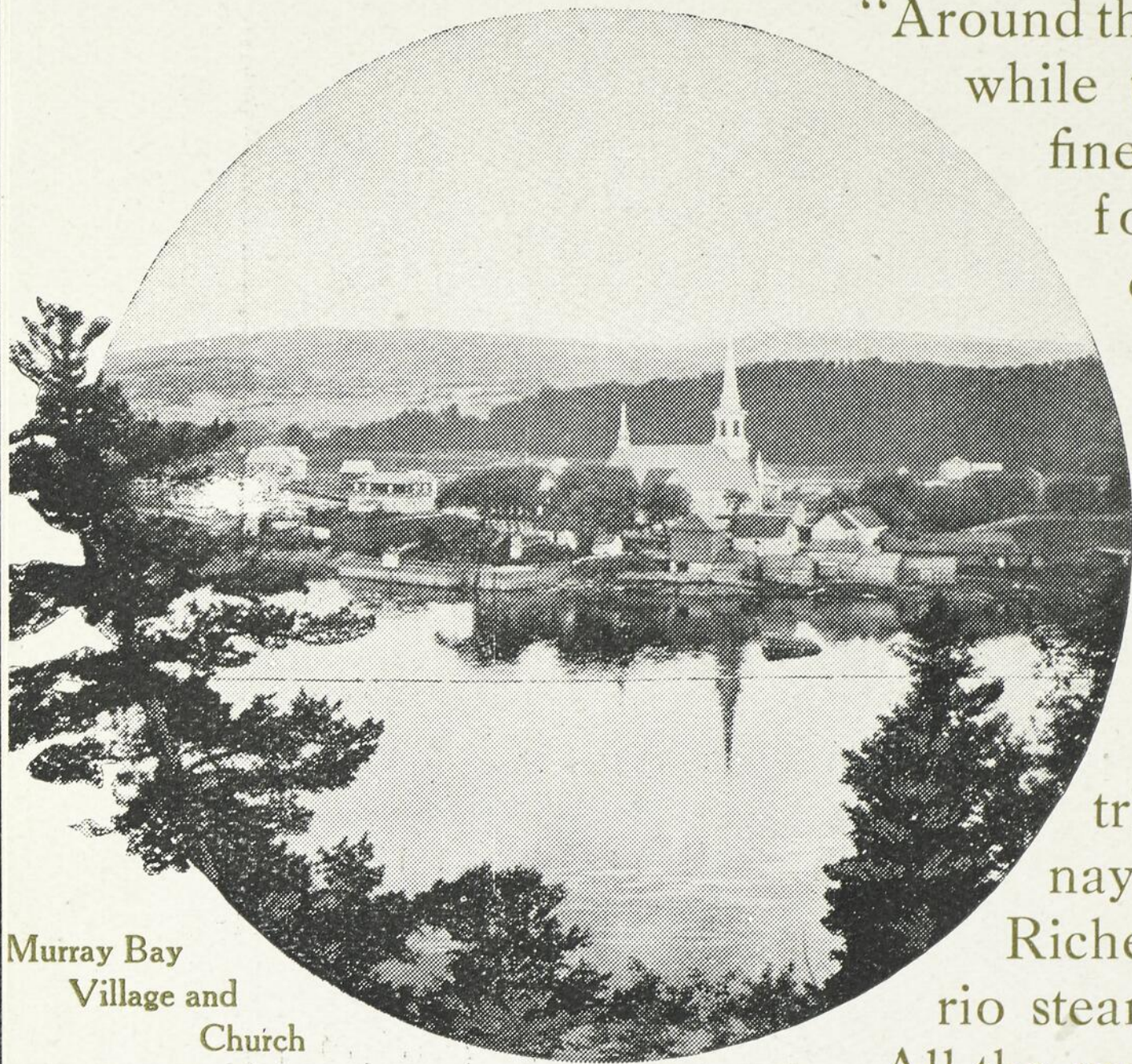
The drives at Tadousac are many, over good roads, and among them may be mentioned the drive

“Around the Concession,” while the walks offer fine opportunities for mountain climbing.

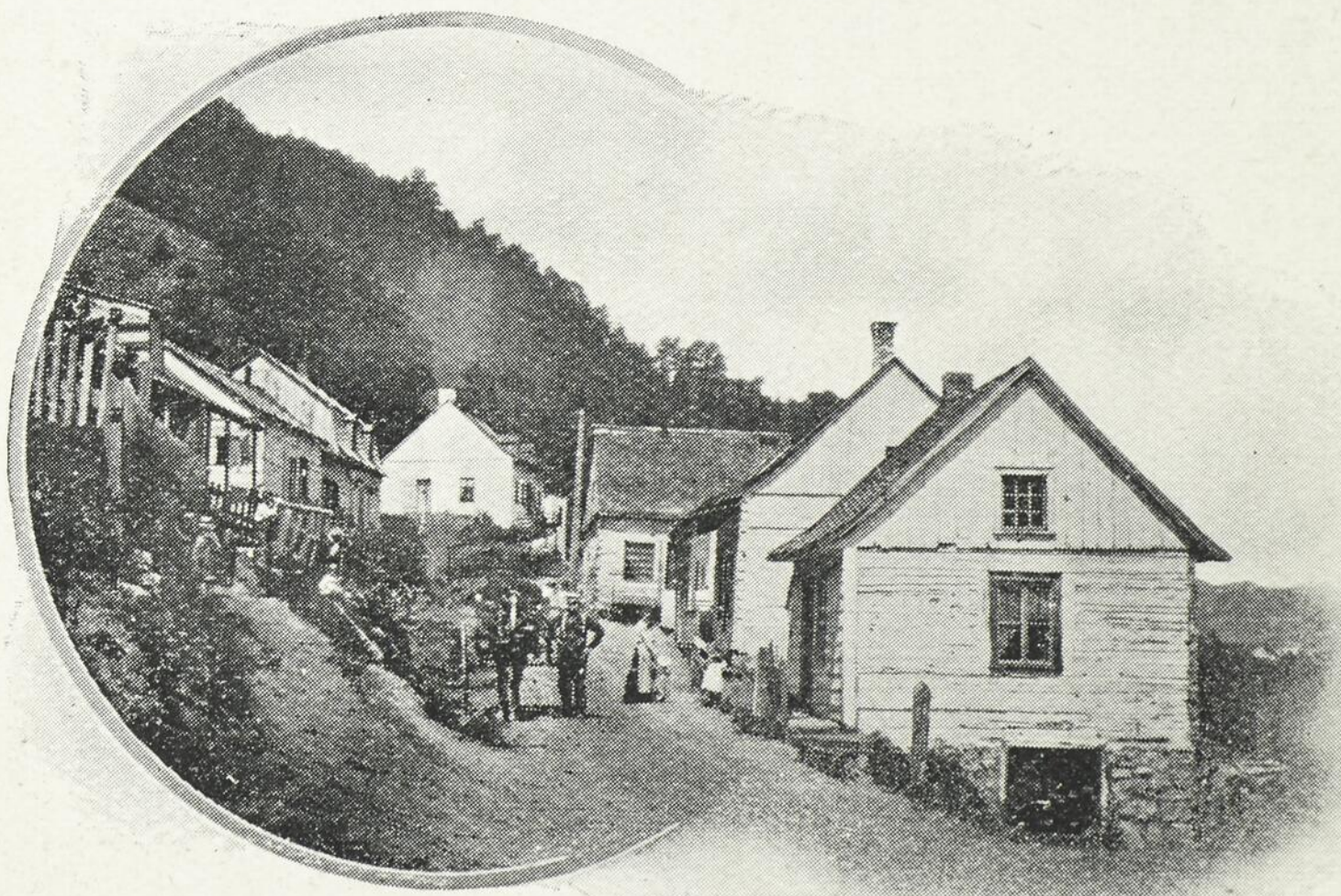
Guests may make excursions by carriage, sailboat, rowboat or canoe, or the grand trip up the Saguenay river by the Richelieu & Ontario steamers.

All the water used at Tadousac is perfectly pure. Its source may well be called “The Lake of the Clouds,” high as it is on the mountain overlooking the village.

As hay-fever resorts Tadousac and Murray Bay are unexcelled. Hundreds of hay-fever and asthma sufferers from all parts of the United States and Canada, who have visited the Lower St. Lawrence,



Murray Bay  
Village and  
Church

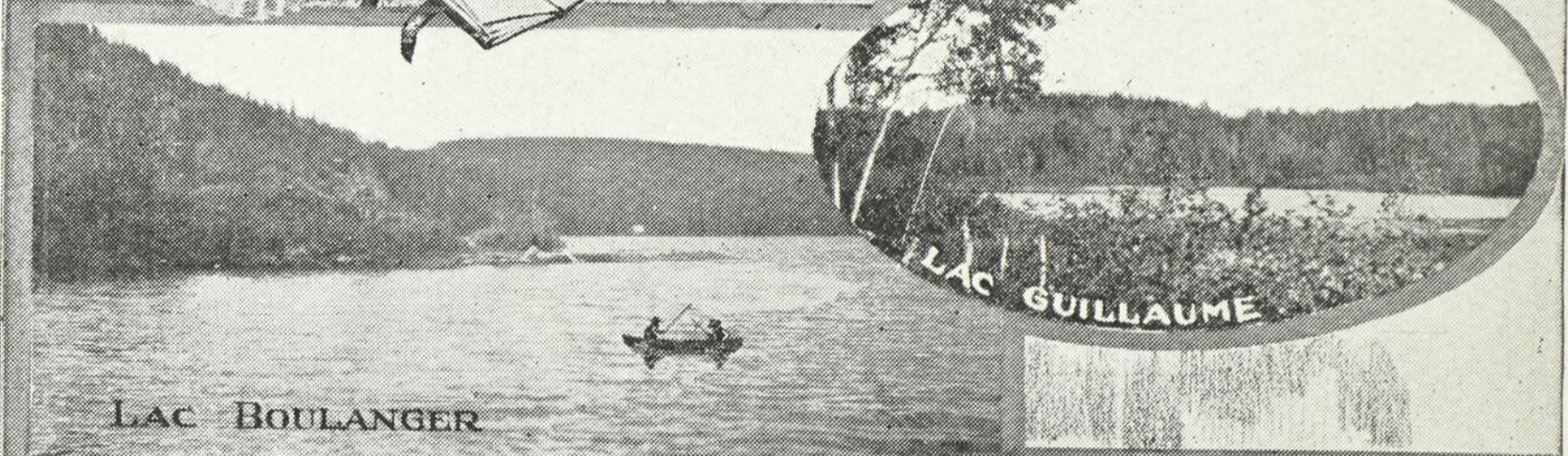


Village de la Comporte



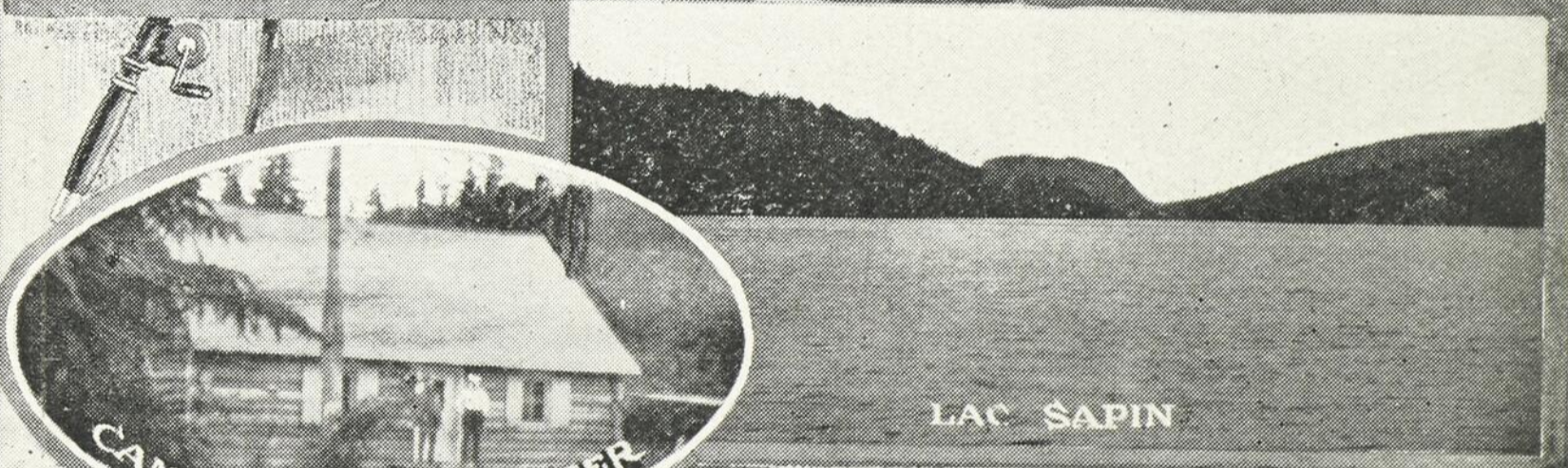
View on the Saguenay River.

# R. & O. Fishing Preserves Tadoussac



LAC BOULANGER

LAC GUILLAUME



CAMP LAC BOULANGER

LAC SAPIN



OUR CATCH

LAC GOBEIL

TADOUSSAC TROUT

have obtained immediate relief from these maladies.

Owing to the pureness and dry mountain and salt water air combined, perfect immunity from malaria is also assured.

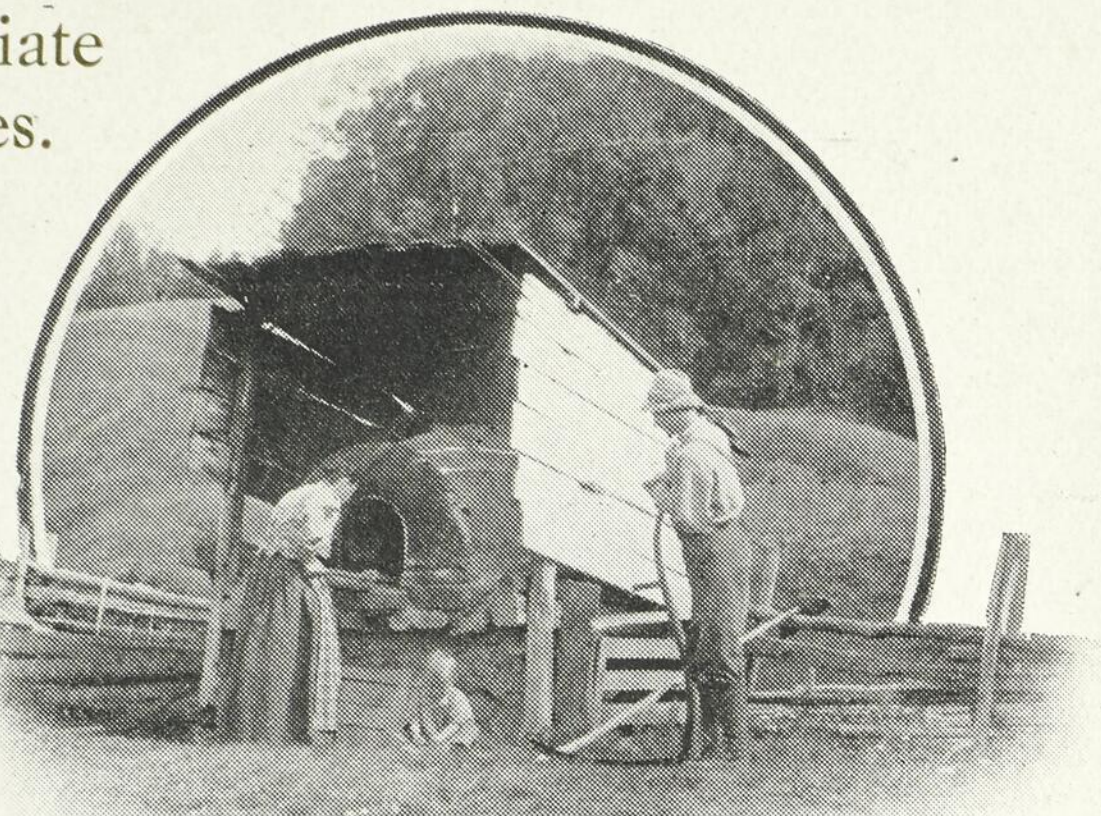
Churches of different denominations have been erected at which eminent clergymen officiate.

A skilled physician is always in attendance at each hotel.

The steamer leaves Tadousac at nightfall to proceed up the Saguenay to Chicoutimi. The voyage down the Saguenay is made by daylight, and is one long scene of wonderment at the immensity and stern majesty of the scenery along its shores. The Saguenay is a stupendous chasm, cleft for sixty-five miles through the heart of the Laurentian Mountains. The stupenduous promontories known as capes Trinity and Eternity, rising 1900 and 1800 feet respectively above the water—

are amongst the most remarkable capes in the world. From Murray Bay, the voyage back to Quebec is made by night.

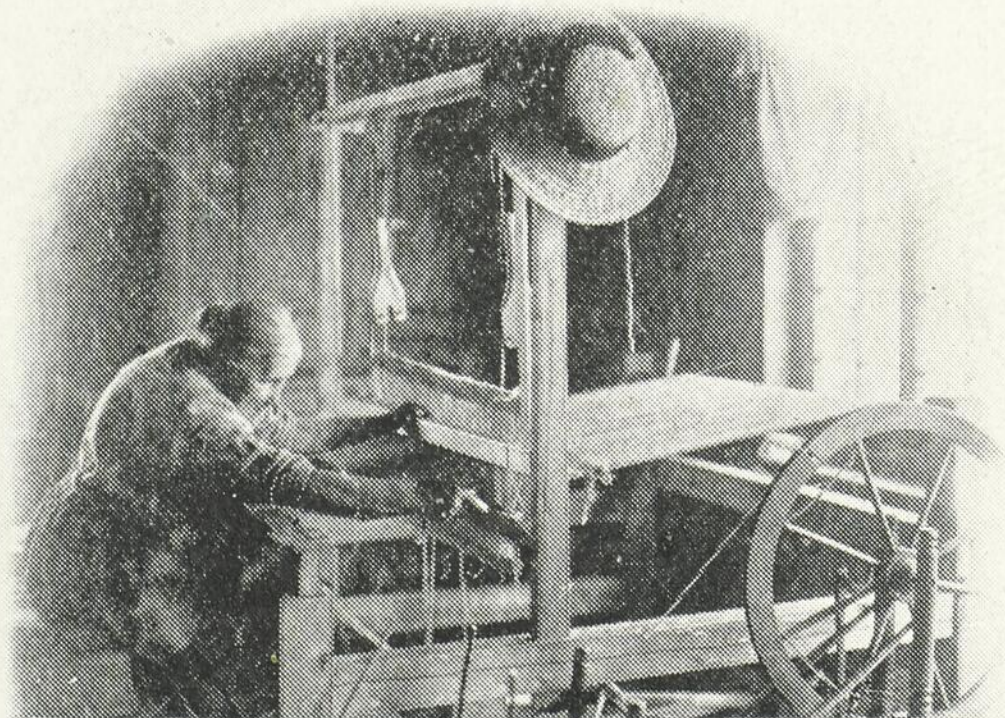
For rates and reservations, etc., at Manoir Richelieu, address A. C. Brooks, Manager, Manoir Richelieu, Murray Bay, Que-



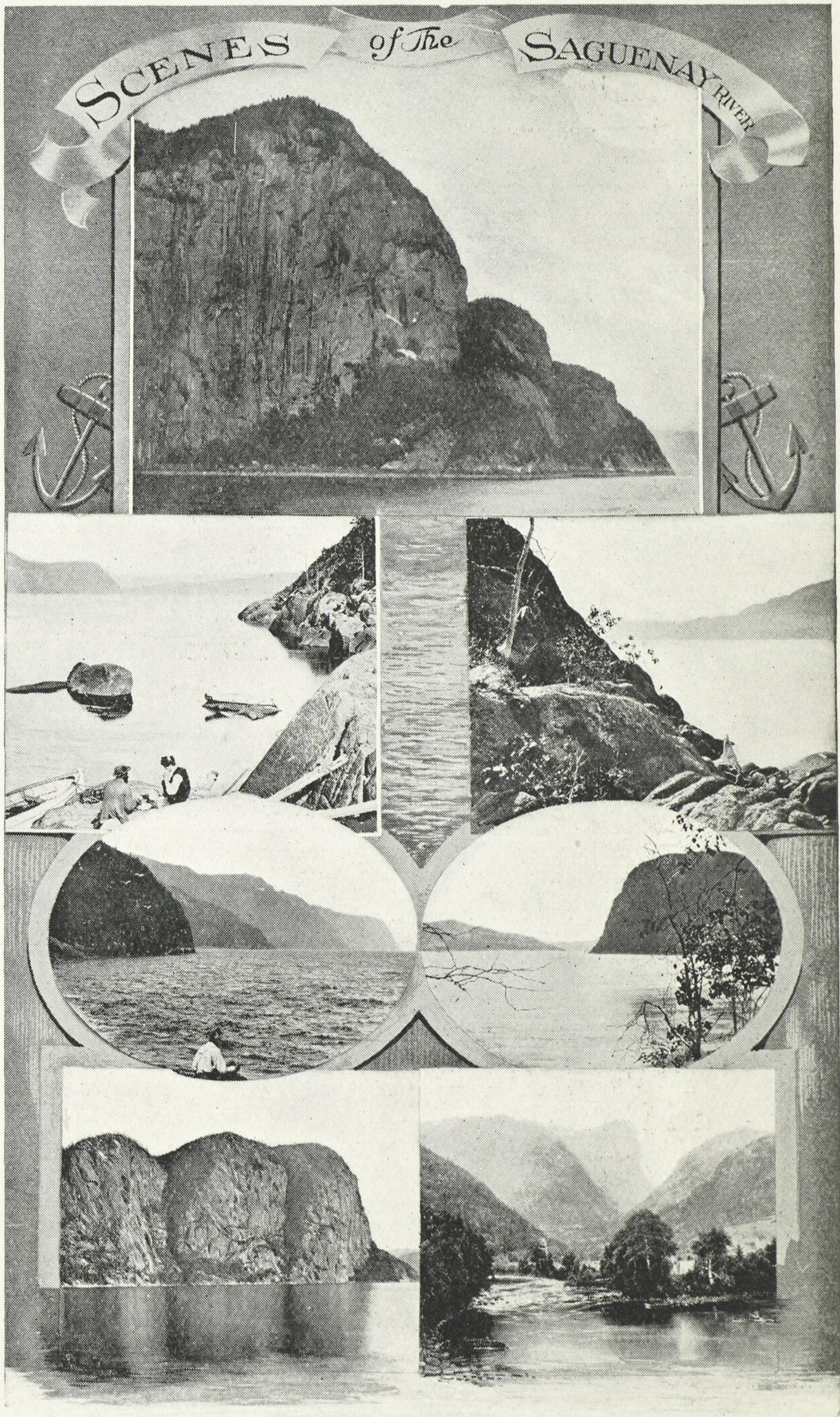
Bake Oven at Tadousac



President Taft playing Golf at Murray Bay



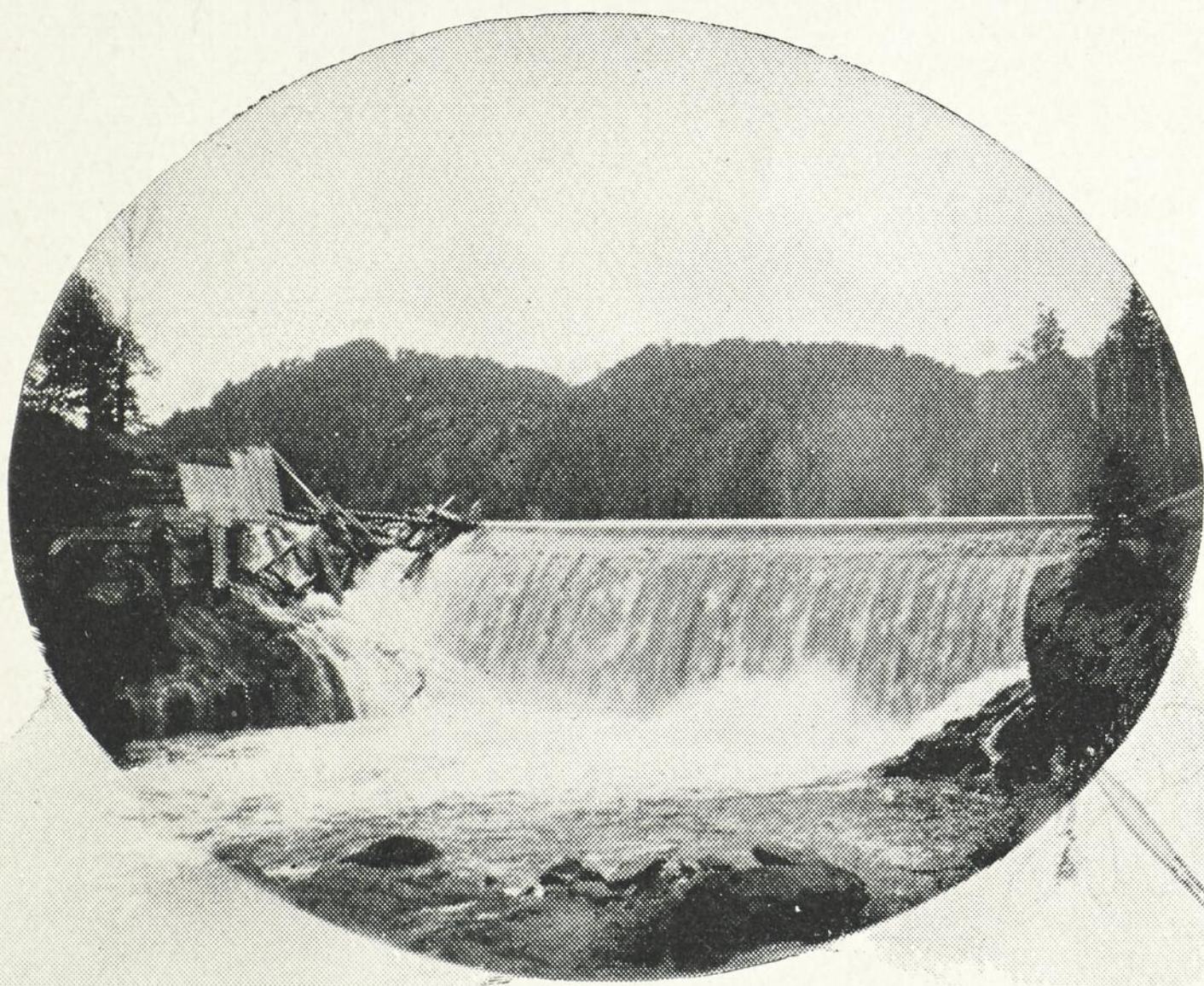
Weaving Home-Spun, Cap-à-l'Aigle



bec. Until June 15th, care of Richelieu & Ontario Navigation Co., Montreal.

For rates and reservations, etc., at Tadousac Hotel, address F. B. Bowen, Manager, Tadousac, Quebec. Until June 15th, care of Richelieu & Ontario Navigation Co., Montreal.

Also Hotel Information Bureaus at the following offices of the Company: Buffalo, N. Y., 285 Main Street; Niagara Falls, N. Y., International Hotel; Toronto, Canada, 46 Yonge Street; Rochester, N. Y., 32 Main Street, West, Power's Hotel; Alexandria Bay, N. Y., District Passenger Agent's Office on Wharf; Montreal, Canada, 126-128, St. James Street; Quebec, Canada, Dalhousie Street.



Salmon Leaping Nairn Falls.

# Richelieu and Ontario Navigation Co.

“NIAGARA TO THE SEA”

SCHEDULE OF THROUGH TOURIST SERVICE

— 1910 —

## TORONTO-ROCHESTER-MONTREAL LINE

Season June to September

Steamers leave Toronto and Montreal from June 1st, daily except Sunday. From July 1st until September 10th, daily from Toronto, daily except Sunday from Montreal. September 12th to 17th, daily except Sunday. September 19th to October 1st, Mondays, Wednesdays and Saturdays.

EAST-BOUND	TIME-TABLE	WEST-BOUND
Read Down		Read Up
3.00 P.M.	Leave..... Toronto..... Arrive	7.00 A.M.
11.00 P.M.	Leave..... Charlotte..... Leave	10.30 P.M.
6.00 A.M.	..... Kingston.....	5.00 P.M.
7.20 A.M.	..... Clayton.....	3.00 P.M.
7.30 A.M.	..... Frontenac.....	2.50 P.M.
8.00 A.M.	..... Alexandria Bay.....	2.15 P.M.
10.25 A.M.	Leave..... Prescott..... Leave	11.55 A.M.
6.30 P.M.	Arrive.. (*) Montreal..... Leave	12.30 noon

(\*) Passengers for Quebec are landed at Victoria Pier, alongside Quebec steamer at Montreal.

## MONTREAL-QUEBEC LINE

Season May to November

Steamers leave Montreal and Quebec daily except Sunday until May 28th. From May 29th, daily until October 1st, thence daily except Sunday.

Read Down		Read Up
7.00 P.M.	Leave..... Montreal..... Arrive	7.30 A.M.
6.30 A.M.	Arrive..... Quebec..... Leave	6.00 P.M.

Passengers for the Saguenay, etc., are landed alongside Saguenay steamer at Quebec.

## SAGUENAY LINE

Season May to November

Steamers leave Quebec for the Saguenay as follows:—Until June 11th on Tuesdays and Saturdays. June 14th to July 6th and September 13th to 30th, Tuesdays; Wednesdays, Fridays and Saturdays. July 8th to September 10th, daily. October 1st to Nov. 15th, Tuesdays and Saturdays.

EAST-BOUND		WEST-BOUND
8.00 A.M.	Leave..... Quebec..... Arrive	6.00 A.M.
2.30 P.M.	Leave..... Murray Bay..... Leave	9.00 P.M.
7.00 P.M.	Leave..... Tadousac..... Arrive	3.00 P.M.
According to tide	Leave..... Chicoutimi..... Leave	According to tide

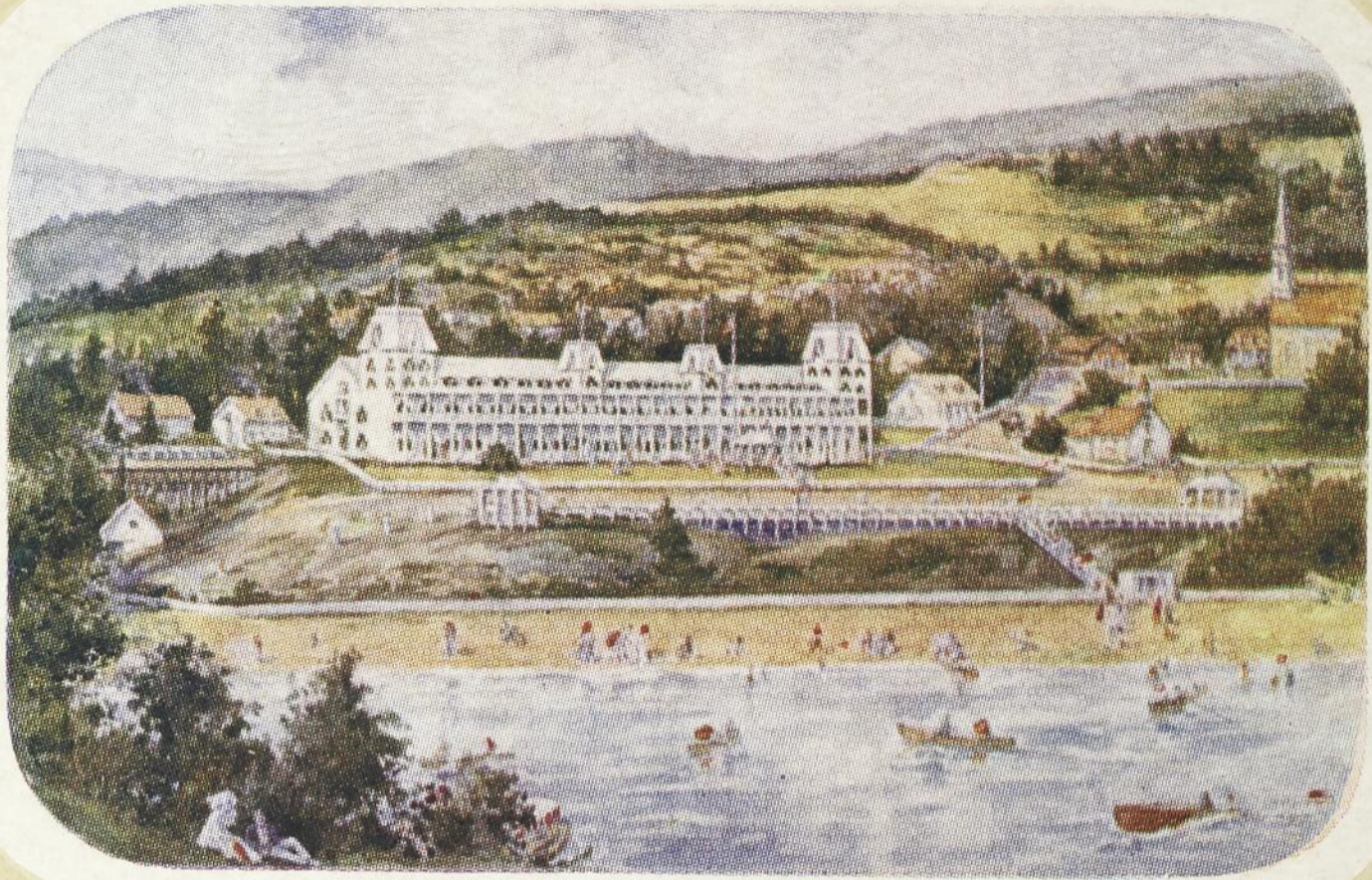
Tickets and information from agents in United States and Canada.

R. & O.

Hotel -



Very faint, illegible text at the bottom of the page, possibly a date or reference number.



TADOUSAC HOTEL

R & O HOTELS



MANOIR

RICHELIEU

TADOUSAC

HOTEL



THE LOWER ST. LAWRENCE  
AND THE SAGUENAY

BNO



C 000 112 848