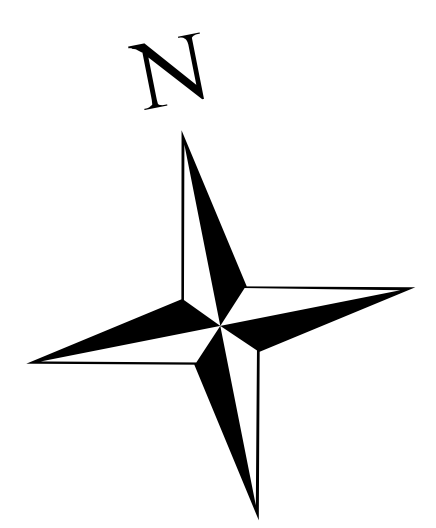


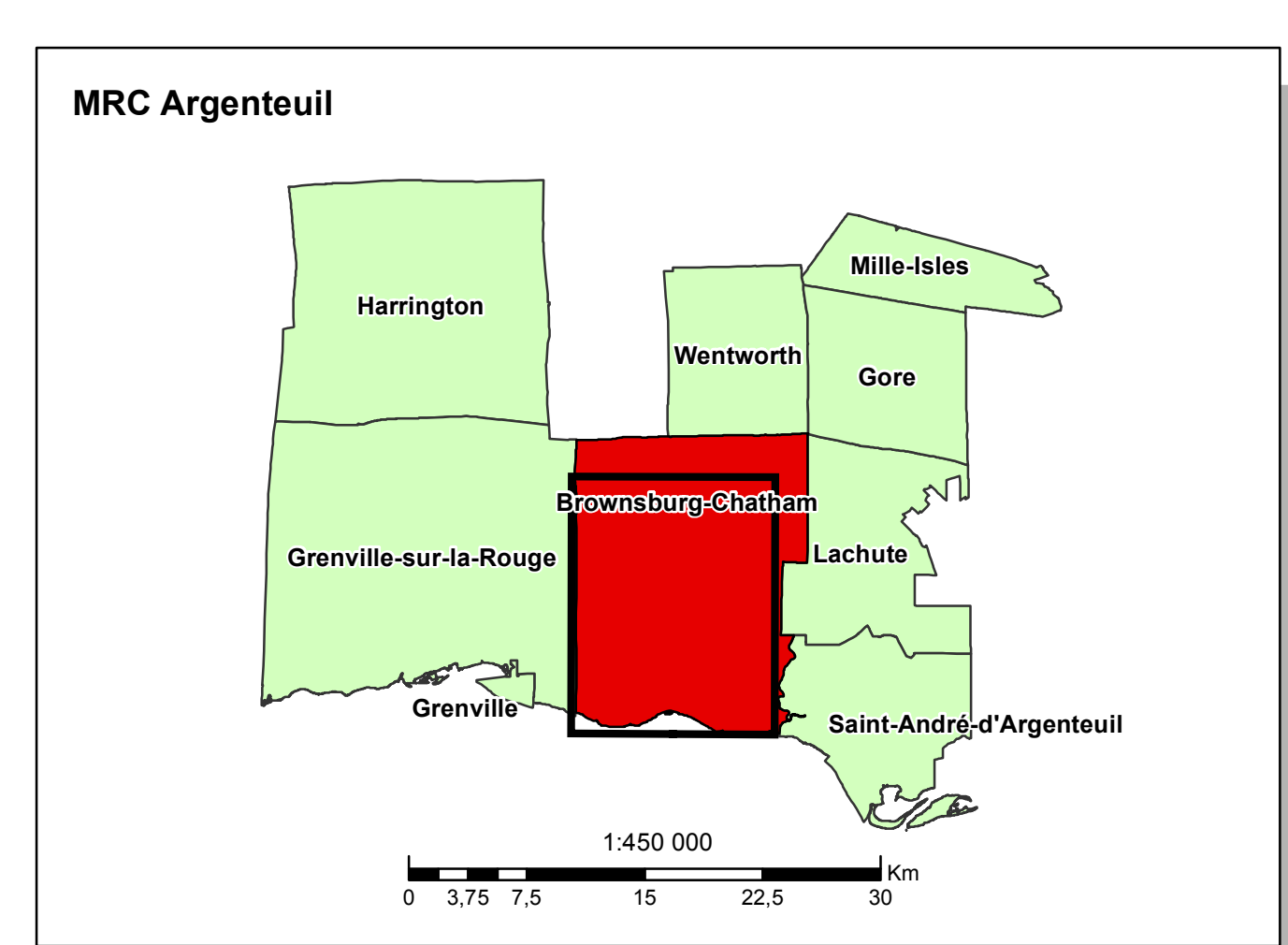
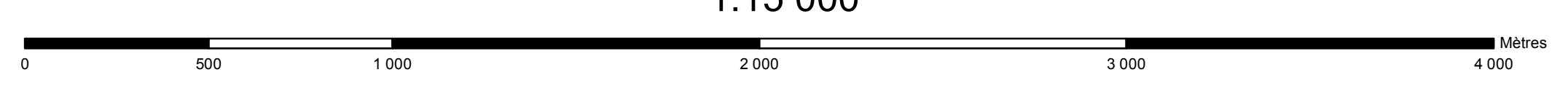
- Limites municipales
- Hydrographie
- Zone non agricole
- Exclusion
- Inclusion
- Ilots Destructures**
- Ilot déstructuré type 1 (avec morcellement)
- Ilot déstructuré type 2 (sans morcellement et vacant)
- Secteurs**
- Affectation agro-forestière type 1 (5 ha)
- Affectation agro-forestière type 2 (10 ha)
- Affectation agro-forestière type 3 (15 ha)

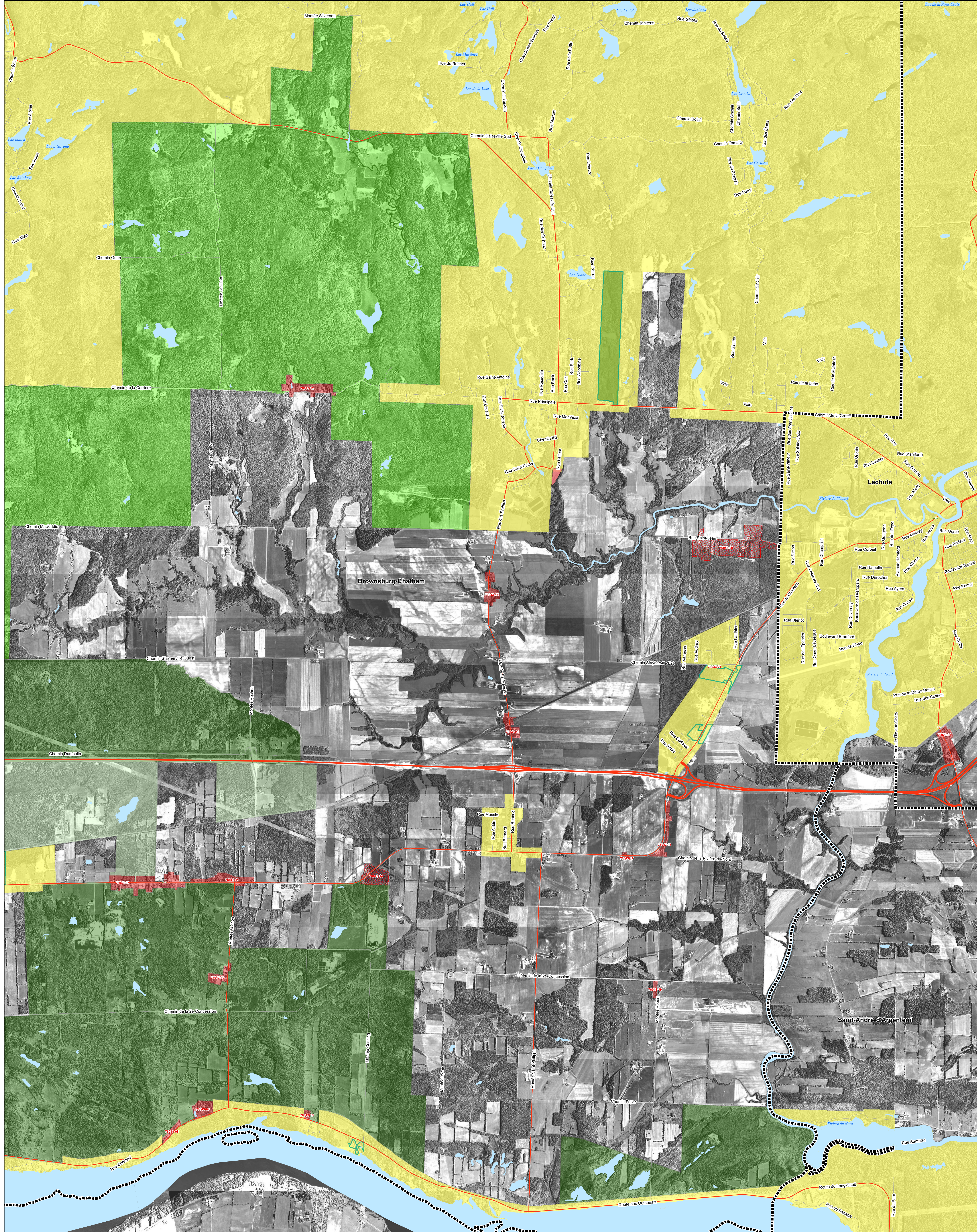


## Article 59 MRC Argenteuil

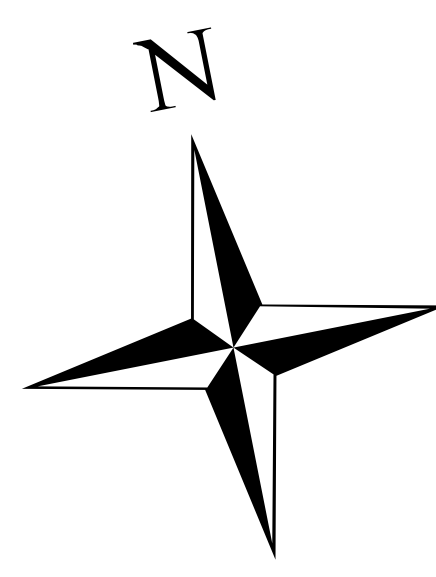
### Ville de Brownsburg-Chatham 1 de 2

1:15 000





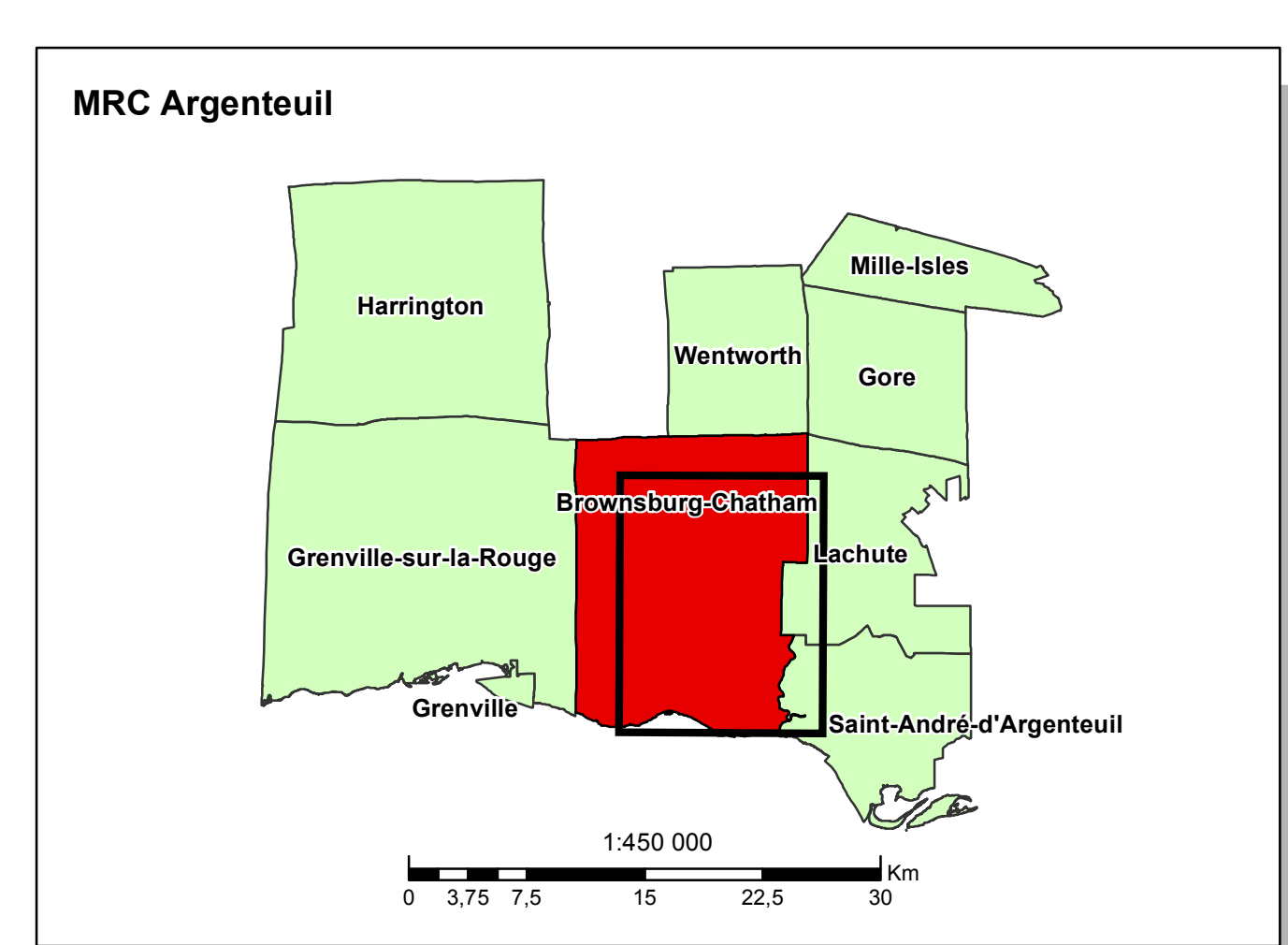
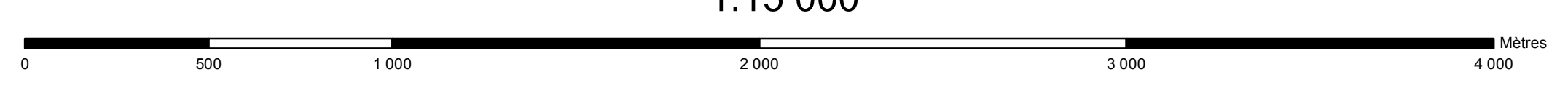
- Limites municipales
- Hydrographie
- Zone non agricole
- Exclusion
- Inclusion
- Ilots déstructurés**
- Ilot déstructuré type 1 (avec morcellement)
- Ilot déstructuré type 2 (sans morcellement et vacant)
- Secteurs**
- Affectation agro-forestière type 1 (5 ha)
- Affectation agro-forestière type 2 (10 ha)
- Affectation agro-forestière type 3 (15 ha)

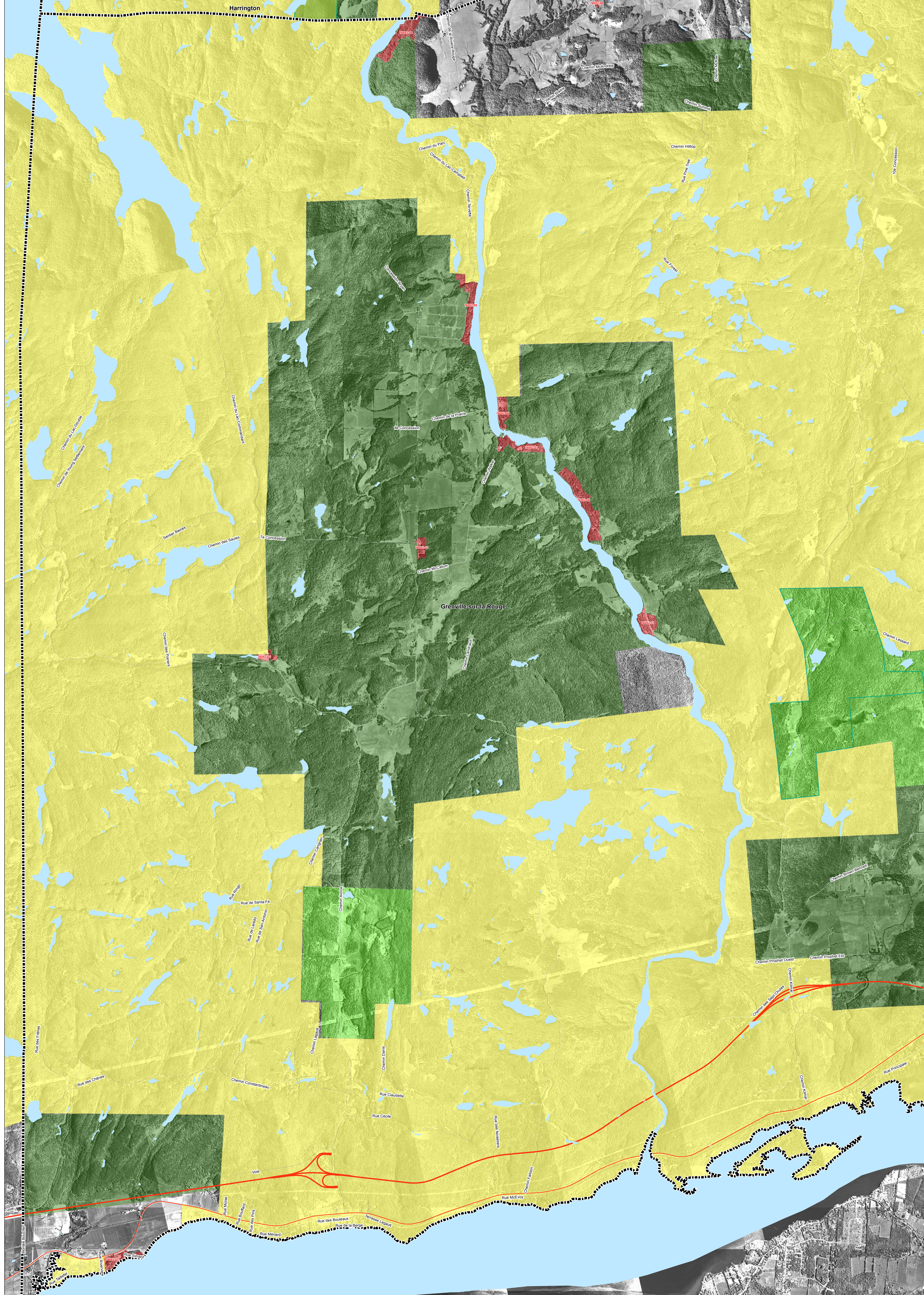


## Article 59 MRC Argenteuil

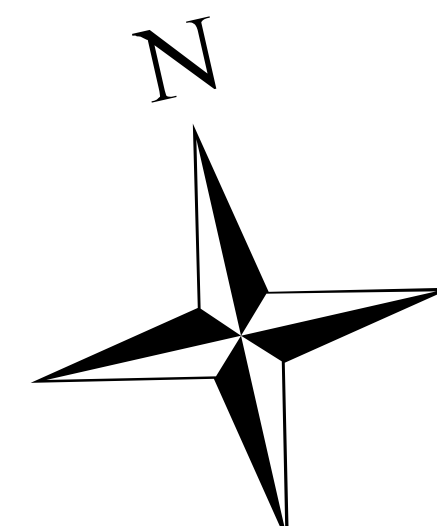
**Ville de Brownsburg-Chatham**  
2 de 2

1:15 000

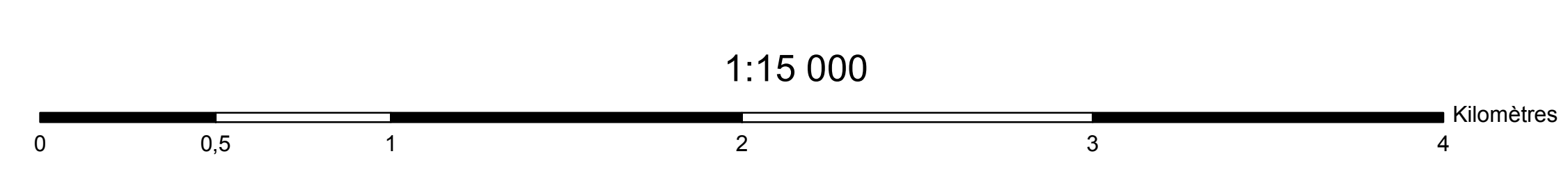




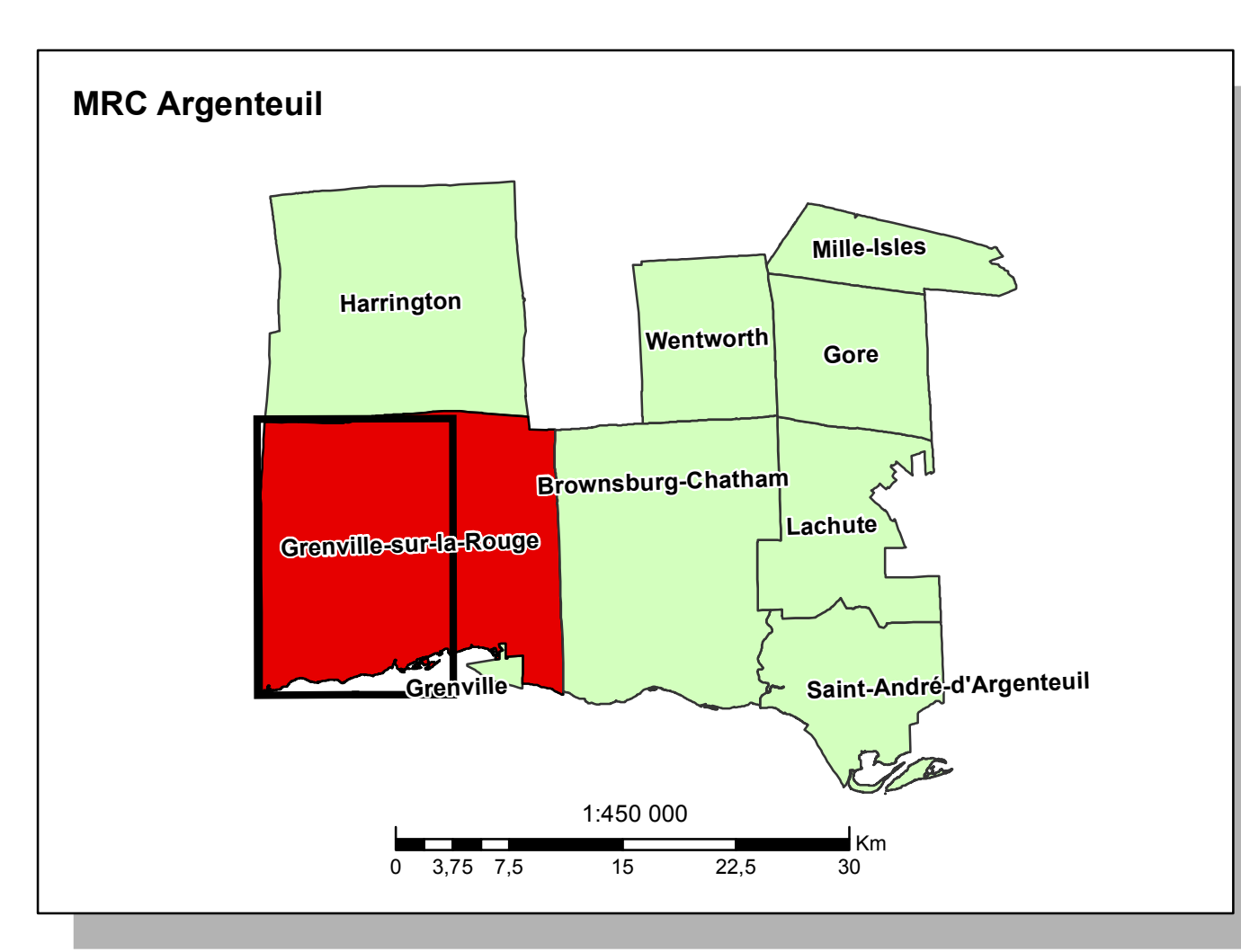
- Limites municipales
- Hydrographie
- Zone non agricole
- Exclusion
- Inclusion
- Ilots Destructures**
- Ilot déstructuré type 1 (avec morcellement)
- Ilot déstructuré type 2 (sans morcellement et vacant)
- Secteurs**
- Affectation agro-forestière type 1 (5 ha)
- Affectation agro-forestière type 2 (10 ha)
- Affectation agro-forestière type 3 (15 ha)



**Article 59**  
**MRC Argenteuil**  
*Municipalité Grenville-sur-la-Rouge*  
**1 de 2**

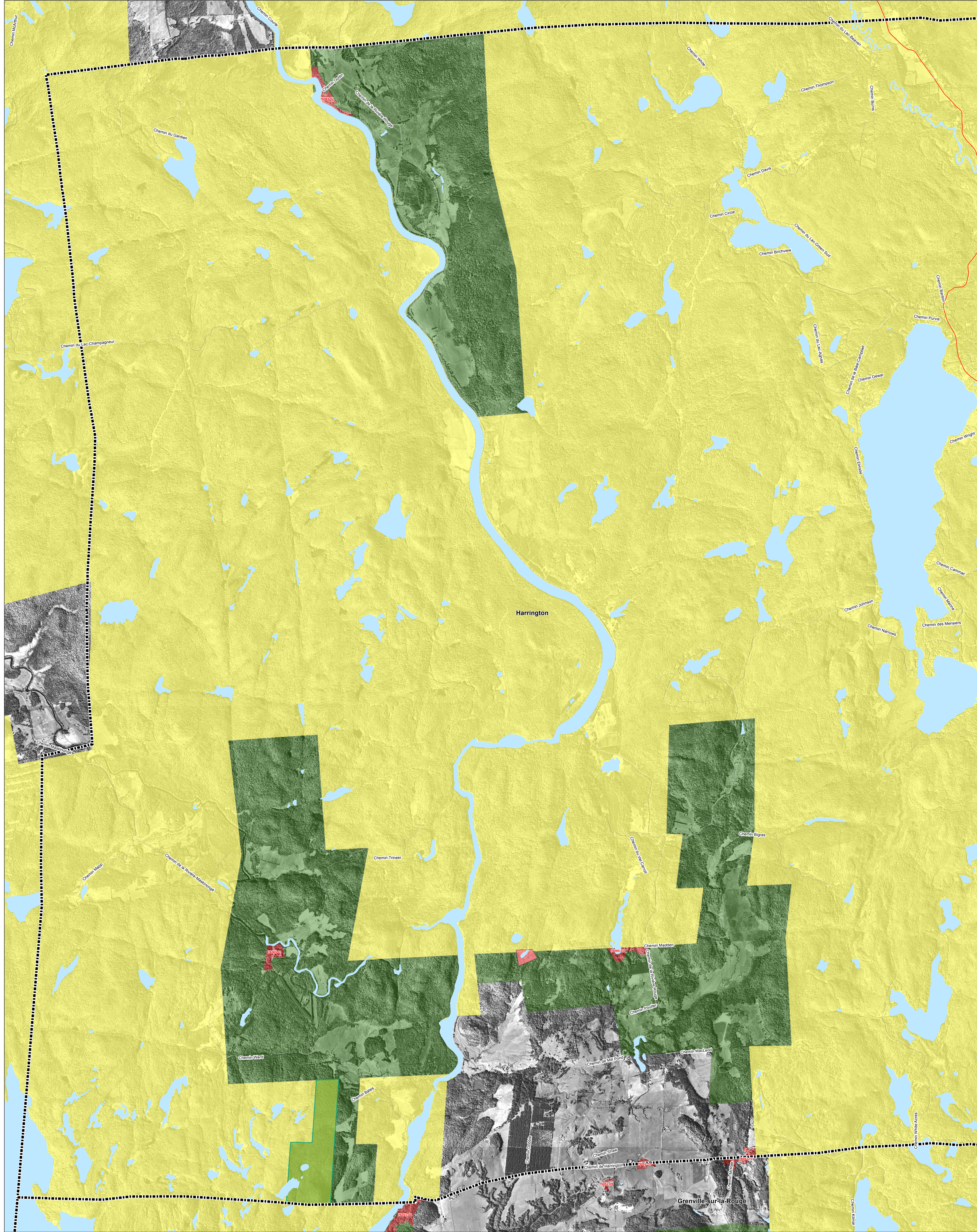


1:15 000

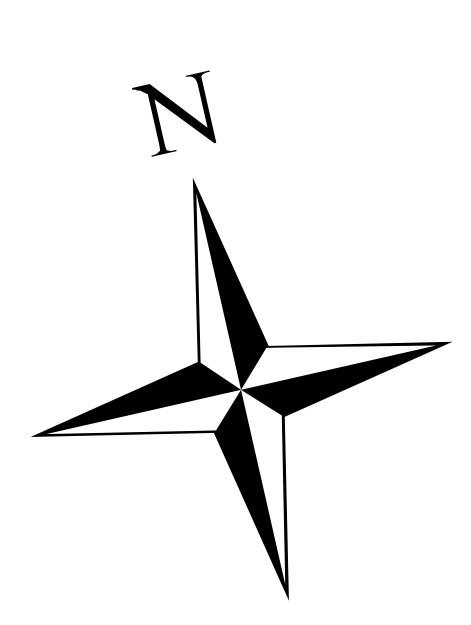


Grenville-sur-la-Rouge 1/2

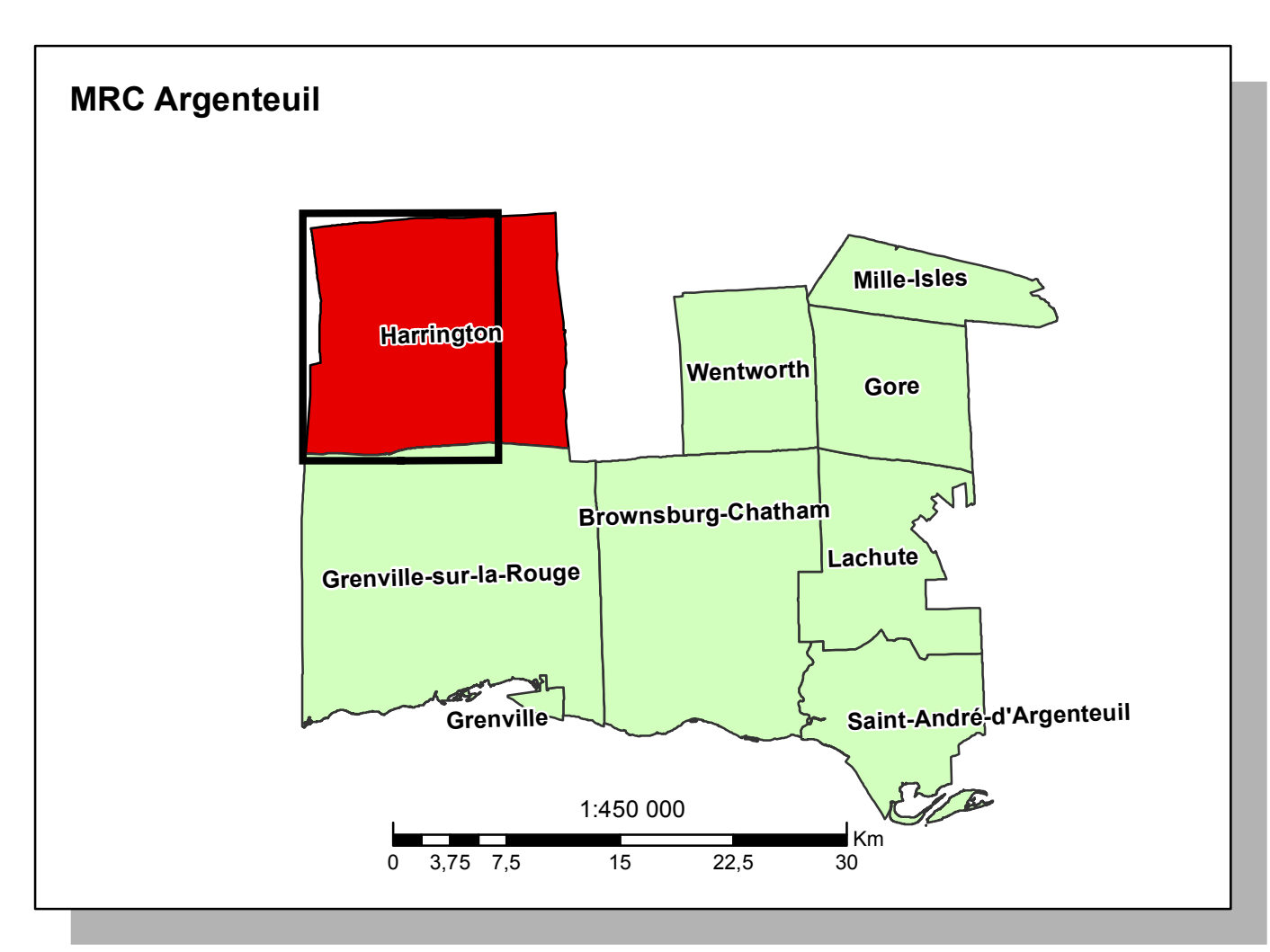
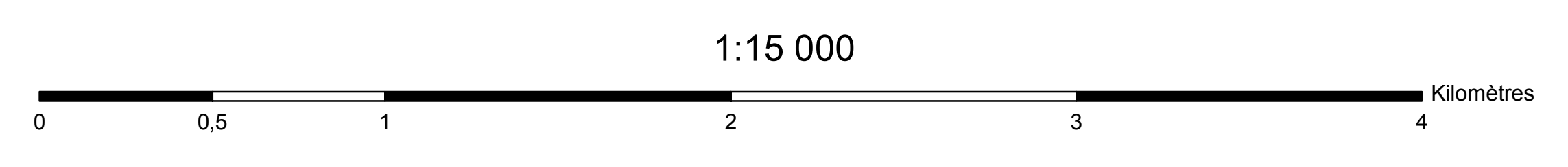


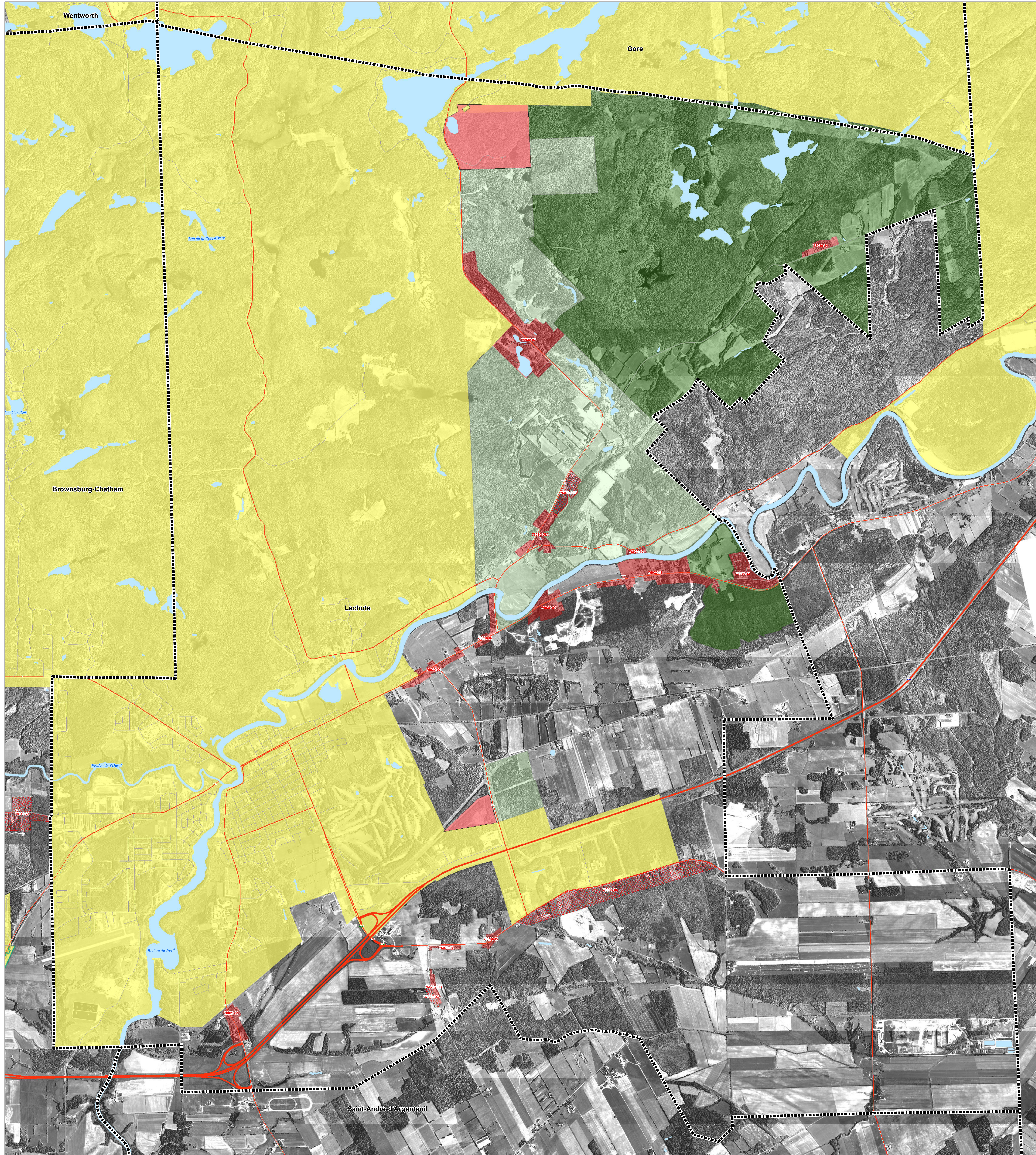


- Limites municipales
- Hydrographie
- Zone non agricole
- Exclusion
- Inclusion
- Ilots Destructures**
- Ilot déstructuré type 1 (avec morcellement)
- Ilot déstructuré type 2 (sans morcellement et vacant)
- Secteurs**
- Affectation agro-forestière type 1 (5 ha)
- Affectation agro-forestière type 2 (10 ha)
- Affectation agro-forestière type 3 (15 ha)

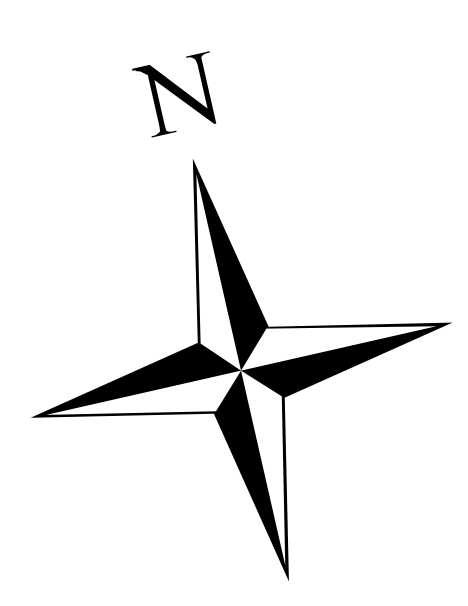


## Article 59 MRC Argenteuil Canton Harrington

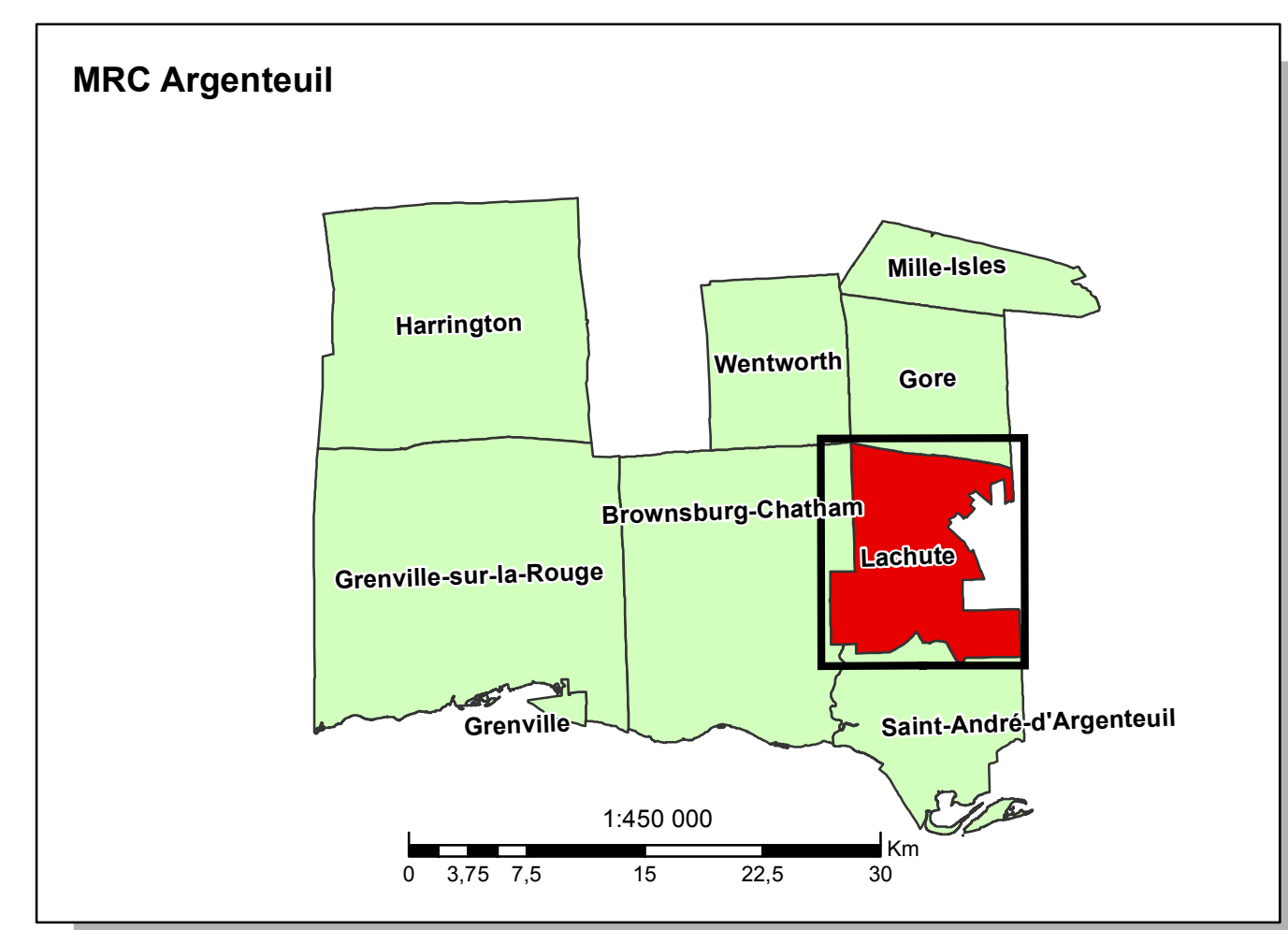
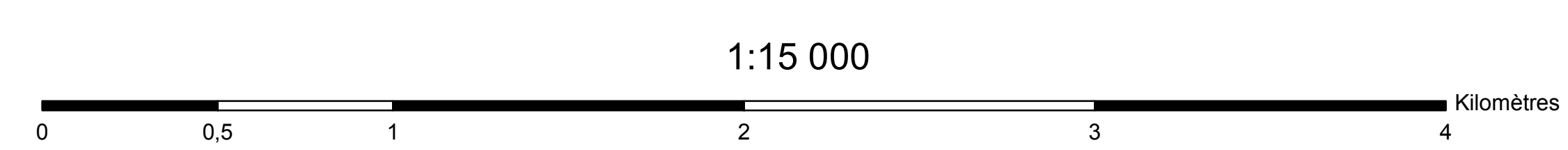


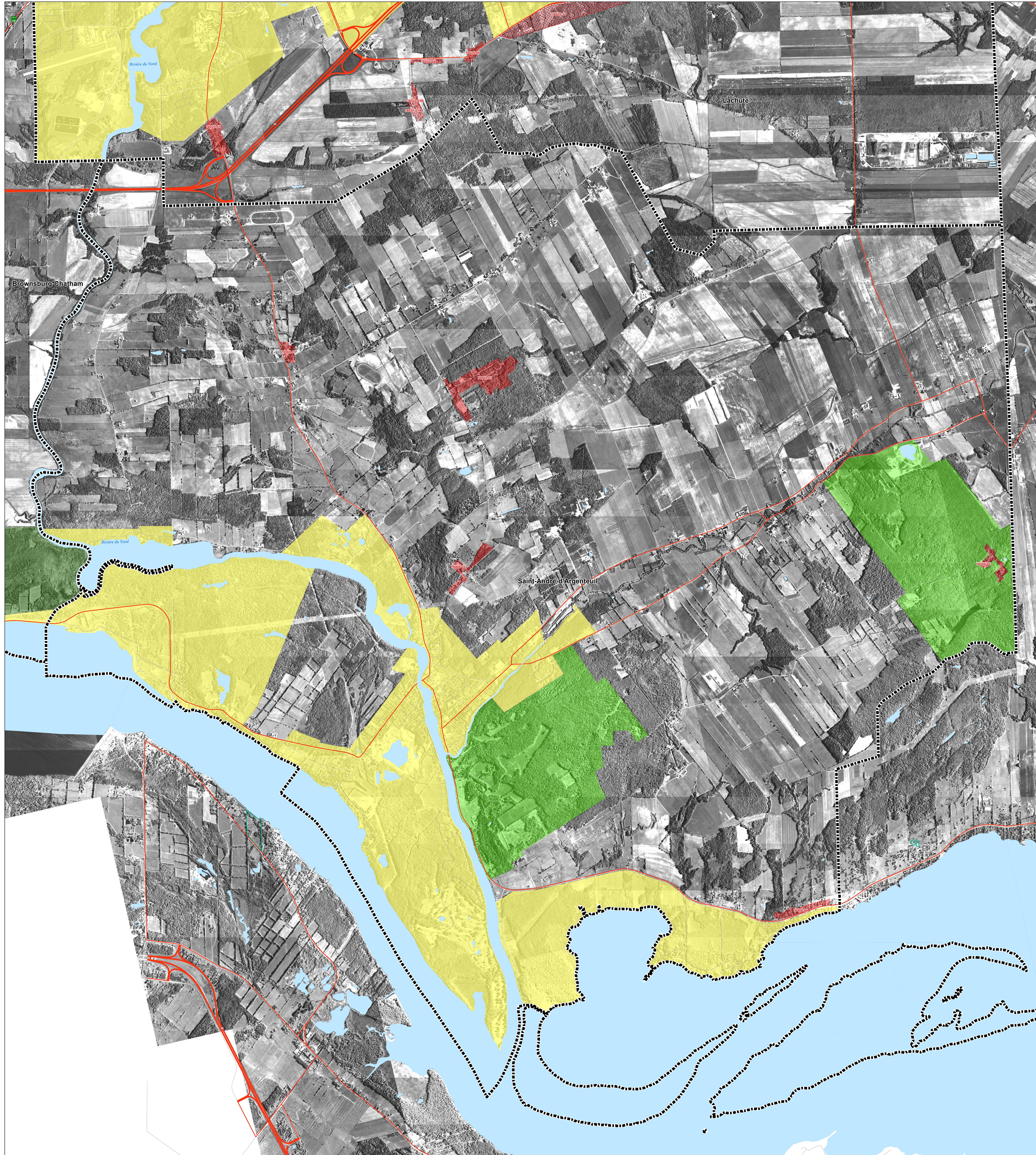








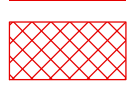
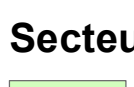


- Limites municipales
- Hydrographie
- Zone non agricole
- Exclusion
- Inclusion
- Ilots Destructures**
- Ilot déstructuré type 1 (avec morcellement)
- Ilot déstructuré type 2 (sans morcellement et vacant)
- Secteurs**
- Affectation agro-forestière type 1 (5 ha)
- Affectation agro-forestière type 2 (10 ha)
- Affectation agro-forestière type 3 (15 ha)

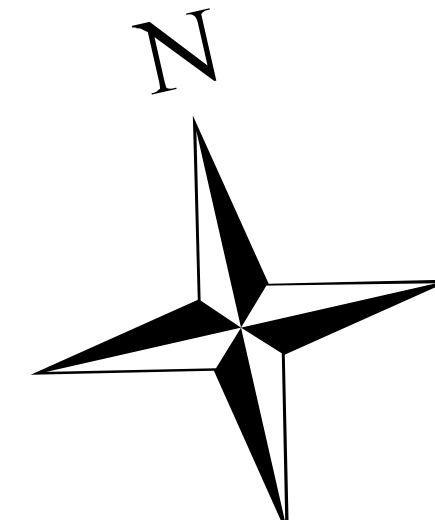


## Article 59 MRC Argenteuil Ville Lachute





-  Limites municipales
-  Hydrographie
-  Zone non agricole
-  Exclusion
-  Inclusion
- Ilots Destructures**
-  Ilot déstructuré type 1 (avec morcellement)
-  Ilot déstructuré type 2 (sans morcellement et vacant)
- Secteurs**
-  Affectation agro-forestière type 1 (5 ha)
-  Affectation agro-forestière type 2 (10 ha)
-  Affectation agro-forestière type 3 (15 ha)



## Article 59 MRC Argenteuil

*Municipalité Saint-André-d'Argenteuil*

1:15 000

