

# L'ART DU CHANT

APPLIQUÉ  
AU PIANO

1<sup>re</sup> Serie

N<sup>o</sup> 1.

**QUATUOR**  
de l'Opéra **I Puritani** de Bellini.

N<sup>o</sup> 2.

*Tragicomi* Air de *Perselese*.

N<sup>o</sup> 3.

*Adelaide* de Beethoven

N<sup>o</sup> 4.

AIR D'ÉGLISE du célèbre chanteur **STRADELLA**.

N<sup>o</sup> 5.

*Larghetto* tiré du *Requiem* de Mozart  
**DUO** des Noces de Figaro Opéra de **MOZART**

N<sup>o</sup> 6.

*Perche mi guardi e pianci*  
**DUETTO DE ZELMIRA**  
OPERA DE ROSSINI.

Each No. 75 Cts.

H.F. Greene, Eng. Boston.

## S. F. WALKER & CO.

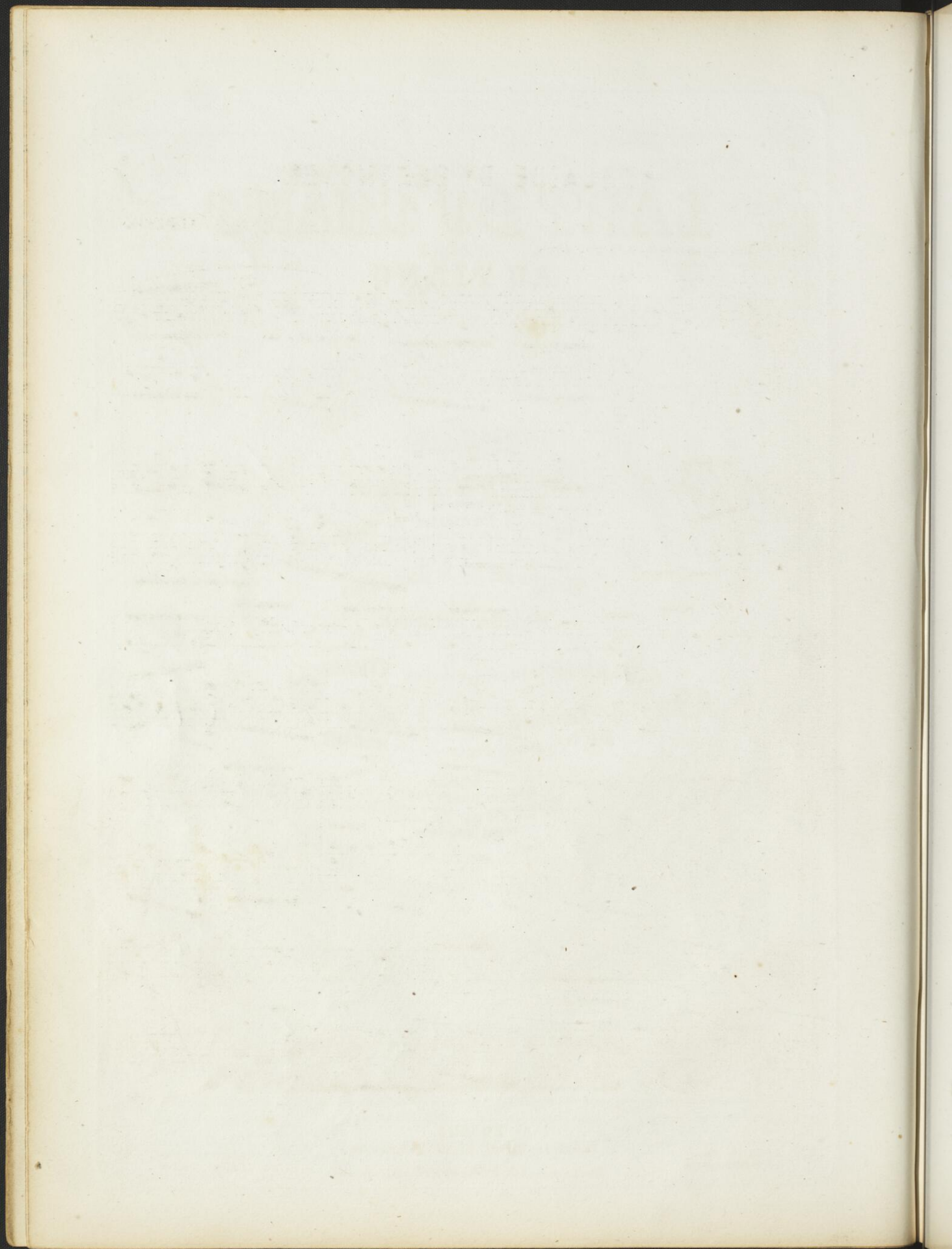
BOSTON

Published by OLIVER DITSON 115 Washington St.

D.A. TRUAX Cincinnati

J.E. GOULD Philad.  
T.T. BARKER Boston.

C.C. CLAPP & CO Boston.  
T.S. BERRY N.York.



# ADELAIDE BY BEETHOVEN.

S. THALBERG.

The Melody is printed in larger notes.

*Larghetto.* . . ♩ = 72.

*p*

*Ped.* \* *Ped.* \*

*Una corda.* *Ped.* \*

*Le chant bien marque.* R.H. L.H. *Ped.* \*

L.H. R.H. L.H. R.H. *Ped.* \*

*Una corda.* L.H. R.H. *pp* *Ped.* \*

4

*p* *sf*

*Ped.* \*

*p* *Cres.* *f*

*Ped.* \* *Ped.* \* *Ped.* \*

*f* *p*

*Ped.* \* *Ped.* \*

*f* *f* *p*

*Cres.* *Ped.* \* *Ped.* \*

*f*

*Ped.* \* *Ped.* \* *Ped.* \* *Ped.* \*

*Ped.* \*

*Ped.* \*

*p* *Cres.* *ff* *p* *Una corda.*

*Ped.* \* *Ped.* \* *Ped.* \* *Ped.* \*

*pp* *Rallentissez.*

*Ped.* \* *Ped.* \* *Ped.* \* *Ped.* \*

*A tempo.* *pp* *Una corda.*

*Ped.* \* *Ped.* \* *Ped.* \*

*R.H.* *f*

*Ped.* \*

7  
pp *Una corda.*  
Ped. \*

f  
Cres.  
f Ped. \*

p  
p  
f  
f  
Ped. \* Ped. \* Ped. \* Ped. \*

f Ped. \*  
p  
Ped. \* Ped. \* Ped. \* Ped. \*

*Una corda.*  
Retenez un peu.  
A tempo.  
R.H. L.H. R.H. L.H. R.H.  
Ped. \* Ped. \* Ped. \* Ped. \*

*Ped.* \*

*Pressez un peu.*

*Cres. Ped. Ped. Ped. f*

*Tres agite.*

*Ped. Ped. Ped.*

*Rallentissez.* *Allegro. ♩ = 104.*

*f ff Ped. Ped. Ped.*

*R. II.*

*Ped. Ped.*

*Ped.* \* *Ped.* \* *Ped.* L.H. R.H.

\* *Ped.* \* *Ped.* \* *Ped.* \*

*Ped.* \* *Ped.* \*

*Pressez un peu.*  
*p*  
R.H.  
*Ped.* \* *Ped.* \*

*Rallentissez.*  
*Cres.* *f* *pp*  
*Ped.* \* *Ped.* \*

Retenez un peu. <sup>9</sup>

*p* *Cres.* *f*

Ped. \* Ped. \*

<sup>5</sup>

*p* *p* R.H.

Ped. \* Ped. \*

*p* *Cres.*

Ped. \* Ped. \* Ped. \*

Agite.

*f*

Ped. \* Ped. \* Ped. \* Ped. \*

*p*

Ped. \* Ped. \* Ped. \*

Musical notation system 1, measures 1-4. Treble clef, bass clef. Dynamics: Cres., f, sf, Ped. p\*. Pedal markings: Ped., \* Ped., \*

Musical notation system 2, measures 5-8. Treble clef, bass clef. Dynamics: p, Ped. \*. Fingerings: 3, 3, 2, 4, 3, 2, 2, 4, 4, 4, 3, 4, 3, 2. Pedal markings: Ped., \* Ped., \*

Musical notation system 3, measures 9-12. Treble clef, bass clef. Dynamics: Ped. \*, Ped. \*, p, Ped. \*. Fingerings: 3, 4, 3. Pedal markings: Ped., \* Ped., \* Ped., \*

Musical notation system 4, measures 13-16. Treble clef, bass clef. Dynamics: f, p. Fingerings: 5. Pedal markings: Ped., \*

Musical notation system 5, measures 17-20. Treble clef, bass clef. Dynamics: p. Pedal markings: Ped., \*

*Pressez un peu.* *Retenez.* *A tempo.*

*Cres.* *f* *p*

*Ped.* \*

*Ped.* \*

*Ped. Cres.* \*

*ff Ped.* \*

*Ped.* \*

*Ped.* \*

*f Dim.*

*Rallentissez.* *A tempo.*

*pp* *pp* *Una corda.*

*Rallentissez beau coup* *Adagio.*

*pp*

*Ped.* \*

*Ped.* \*

*Ped.* \*

