



**The Seignior Club**  
Lucerne-in-Quebec

S

371.4225

Se42 cl



# The Seigniory Club

Lucerne-in-Quebec

5111, RUE HEDOUQUE  
SAINT-SALPICE

## BOARD OF GOVERNORS

### *The Seigniory Club of Lucerne-in-Quebec*

E. W. BEATTY, K.C., LL.D.

President,  
President, Canadian Pacific Railway,  
Director, The Bank of Montreal,  
Chancellor, McGill University.

SIR CHARLES GORDON, G.B.E., K.B.E.

President, The Bank of Montreal,  
President, Royal Trust Company,  
Governor, McGill University.

SIR HERBERT S. HOLT, K.B.

President, The Royal Bank of Canada,  
President, Montreal Light, Heat & Power,  
Director, Canadian Pacific Railway,  
Governor, McGill University.

HON. L. A. TASCHEREAU, LL.D., LL.L., M.P.P.

Prime Minister, The Province of Quebec,  
Commander of The Legion of Honour.

HON. SENATOR F. L. BEIQUÉ, P.C., K.C., LL.D.

President, Banque Canadienne Nationale,  
Director, Canadian Pacific Railway,  
President of the Executive of the  
University of Montreal.

W. N. TILLEY, K.C.

Director, Canadian Pacific Railway,  
Director, The Bank of Montreal.

JOHN LESLIE,

Vice-President, Canadian Pacific Railway.

HON. C. A. DUNNING, P.C.

Formerly Minister of Finance  
of the Dominion of Canada,  
Is Vice-President and General Manager of the  
Lucerne-in-Quebec Community Association.

BIRO  
MONTREAL  
CLUB-SEIGNIORY

## FOREWORD

**T**HIS booklet has been prepared as an informal, pictorial record of keen sport and absolute leisure at the Seignior Club, Lucerne-in-Quebec. Throughout the four seasons of the year, from the Horse Show in May through the fishing, golf and hunting to the skating and ski-ing of the winter, the arts of recreation and relaxation have been successfully blended. The Seignior Club, with its estate of 120 square miles, is seventy-five miles northwest of Montreal in the valley of the Ottawa River; it is the ancient Seigneurie de la Petite Nation, for many generations held by the Papineau family. To-day this vast estate is administered for the benefit of members of the Seignior Club, their families and their friends. Its forests, lakes and rivers are theirs; its fish and game are conserved and protected for their sport; its golf course, tennis courts, swimming pool and other facilities are maintained for their diversion. Twelve months in the year the doors of the Log Chateau, the residential building of the Club group, are open and symbolic of the spirit of its dignified hospitality.

## *The Log Chateau*

**T**HE Log Chateau is a great country house, restful, friendly and cheerful, where members of the Club and their guests live through the holiday seasons or through the quieter weeks of spring and autumn. Its charm is in the blending of the qualities of the country home with the country club. Its lawns and terraces reach down to the Ottawa River. Close by are the sports facilities—the year-round swimming pool, the golf course, the sports club house, the tennis courts, the boat house, the stables, the rinks and the toboggan slides.

A cool tavern, a spacious billiard room, a ball-room, a fountain grill, a main dining room and restful bedrooms and suites have all been incorporated into this unique log building. There is privacy, yet an atmosphere of social animation and good living. On the summer nights the orchestra plays on the terrace while the lights from the yachts at anchor glitter with the stars hanging just over the horizon, and dinner is served.



***T***HE Log Chateau is one of the unique buildings of the world. Mellowed and seasoned logs were brought across the continent from British Columbia and here, on the banks of the Ottawa River, skilled craftsmen adapted a pioneer construction technique to the architecture of this four-winged house of logs.



*The Waterfront*

**B**Y AIR, by land or by water, the approaches to the Club are pleasing. The new airport is ten minutes' walk from the Log Chateau while the Ottawa River is ideal for sea plane landings. The Canadian Pacific Railway station is five minutes by automobile from the Log Chateau and the improved provincial highway from Montreal to Ottawa passes the main gates. So, modern transportation brings members to their Club in the Laurentian forest country.



*The Log Chateau Entrance*



*The Lounge*



*The Central Fireplace*



*Anchorage*



*The Boat House*

**T**HE regatta week-end of the summer is the high point of the year's aquatic events at the Seigniori Club. From eastern Canadian and northern United States waters come freshwater and saltwater craft. Cruisers, runabouts, hydroplanes and outboards converge on Lucerne. Club pennants, gold braid, and the swirling spray of racing launches lend color to the occasion. The Club itself has enough craft to hold frequent local events during the summer season. Ten outboards of varying size and power, "Miss Lucerne" with a 225 horse-power motor and a speed of forty-eight miles per hour, six skiffs, four sailing dinghies, sixteen canvas canoes, and other miscellaneous craft make up the club's fleet.



## *Speed!*

*The ubiquitous small boy spellbound at the motor boat races. At the Seignory Club, children grow up with a splendid appreciation of sports and outdoor life.*



*The Swimming Pool*



**T**HE swimming pool is in a building to itself. Its high glass doors down two sides give it the advantage of year-round use. Water from Echo Lake, under continuous filtration and ultra violet ray treatment, flows in to the pool, one of the most beautiful on the continent. For exhibition diving and swimming events in the summer, the orchestra plays and tea is served to the spectators. At night the colored submarine lighting gives most dazzling effects to display dives and swimming races.



*Ideal tennis for  
players and  
spectators*

**O**N THESE red clay courts of the Seigniory Club, international matches are held each year and the Canadian Davis Cup team finds it ideal for its training period. These pictures of a summer sport and of the shaded lawns sloping down to the river are characteristic of that atmosphere of complete relaxation which survives from seigniorial times.



*Green lawns and cool shade*



*Papineau Manor*

## *The Seignurial Tradition*

AFTER leading a picturesque, courageous but unsuccessful rebellion against British authority in 1837, Louis Joseph Papineau, then Seigneur of this great domain, fled to the United States and thence to Europe, where he lived in exile for ten years. A brilliant, handsome gentleman with a natural gift of oratory, he made many friends among the Liberals of the continent during the restless eighteen-forties. Upon being pardoned by the Queen, he returned to his seignury and applied himself to the development of the property. Together with many articles of furniture he brought the name of Montebello for the village nearest to his home. It was named, he has written, in honor of a very dear friend, the Duke of Montebello, who was a son of one of Napoleon's Marshals. Until his death in 1871, he lived in almost complete retirement from public life, though he entertained extensively. Content to live quietly among his children and grandchildren, he devoted himself to his library and the affairs of the seignury.



*The Manor Tavern*

*Des Vieux Temps*

**P**APINEAU MANOR is truly the heart of The Seigniori Club. From this home, the Seigneurie de la Petite Nation was administered for eight decades. The vast stretches of forest and mountain that can be seen from its towers are but a small section of the vast domain. Its drawing room, card rooms, tavern and ball-room have become the centre of social activities of the Seigniori Club throughout the year.



*A Drawing Room*



**A**BOUT these spacious and beautiful rooms there remains the flavor of a great European country house and it is with a deep regard for the past that the members of the Seignior Club have made this Manor House their own. The debutante parties, the costume balls, and the informal teas and luncheons have brought new life to this home so rich in memories.

*For Formal  
Entertaining*



**A** QUIET charm and dignity which has survived the generations of change and progress in interior decoration still lingers about the ball-room of the Manor. Attractively colored in shades of rose and old ivory and lighted by old glass chandeliers, this is easily the most beautiful in the club group of attractive interiors. It is a perfect setting for the hunt balls, costume dances and for the impromptu parties held during the winter and summer. Members use its attractively grouped reception and card rooms for the entertainment of their friends. From its wide, low windows, gay patches of bright colored flower gardens carry the eye on to long vistas of the Ottawa River, which flows past the terraced slopes.



*The Sports Club House*

*The  
Nineteenth Hole*

**T**HE Sports Club House in its very architecture and furnishings typifies the rich blend of outdoor life and indoor comfort so characteristic of the Seignior Club. This long, low, log building is the golf clubhouse in the summer and in the winter becomes a headquarters for ski-ing parties who take advantage of the adjoining hills for ski-ing.



*Sports Club    nge*



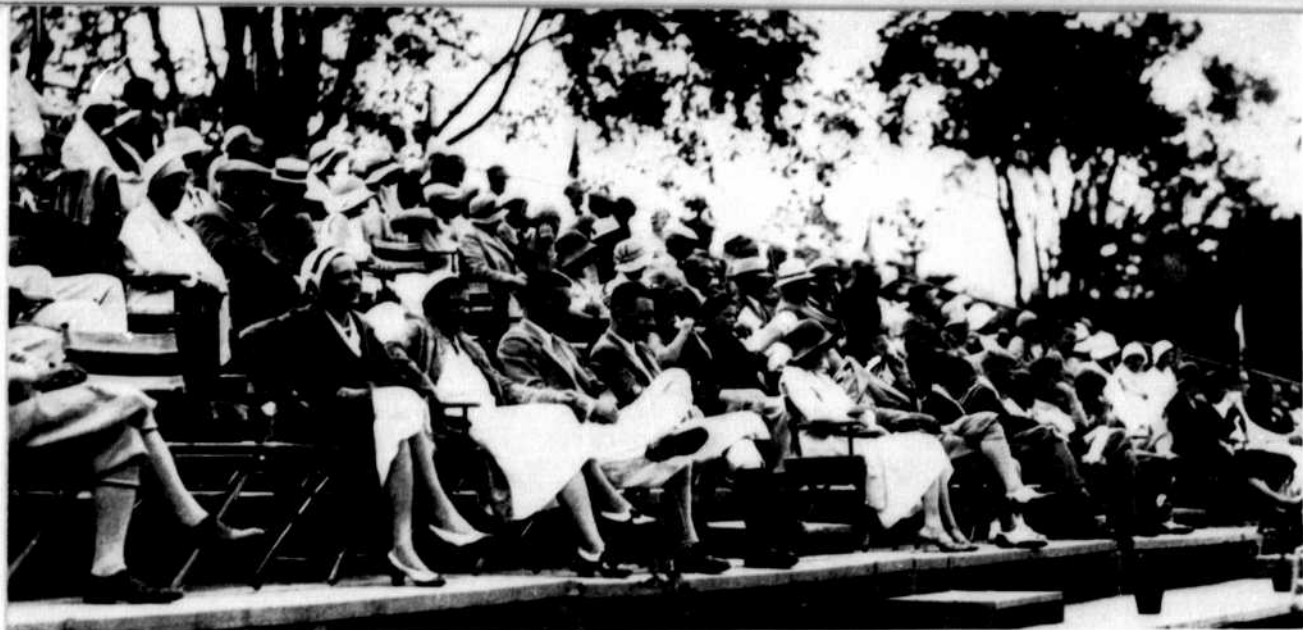
*The Sixth Hole*

**T**HE eighteen holes of the golf course (designed by Stanley Thompson) have been adapted to the natural contours of the Laurentian foothills, making a happy blend of the strenuous and the leisurely. It is 6,500 yards in length, well bunkered but not over-penalized. From the fourth tee is a sweeping view of the entire valley of the Ottawa with the village of Montebello below and the distant spires of other Quebec hamlets in the distance.

# The Golf Course Seigniory Club

Lucerne in Quebec





**T**HE equestrians have their days! The Spring Horse Show and the Autumn Point-to-Point Races are major occasions on the Club sports calendar. With members' mounts, together with horses from the Club stables and entries from some of the best privately owned stables in Canada, these two events each year have become important fixtures in the world of horsemanship.

*Up  
and Over*

*The military units of  
Canada, represented  
often by officers who  
are club members, are  
always keen entrants  
in the Club's horse  
shows and races.*





*Chief Guide*

### *Up Country*

**H**ERE, in the heart of the lake and forest country of the Seigniory Club's eighty thousand acres, there is vigorous outdoor living—and peace. If one would be a hermit, it is possible to live on an island, alone and undisturbed and think about nothing at all or, it is possible to entertain a score of guests, having tents, canoes, fishing tackle and cooking arrangements in the hands of expert guides. In the

vast reaches of the Lucerne-in-Quebec estates the most modern principles of wild life conservation are being applied. Rangers live in the forest the year round, maintaining constant patrols in the interests of fire protection and the elimination of predatory animals. Conservative estimates already place the deer population at four hundred and fifty to five hundred.



**O**n Lac Commandant, which is eight miles long, numerous pine-clad islands and deep inlets make a constantly varying scene as one paddles up to a camp site or to a portage, and over it all Mount Seigneur to the south dominates this north-westerly part of the estate. The rangers who are the guardians of the forest have cabins at strategic points throughout the property and are linked by telephones which enhance their fire protection services and give an added feeling of security to members travelling or camping in this "back country."



*A camp clearing on Lac Commandant*

### *The Fish Hatchery*

**T**HE Club's fish hatchery is an example of the application of the most modern scientific methods to the perpetuation of good sport. A senior biologist with a competent staff of assistants is at work the year round on fish propagation. Certain lakes have been set aside for trout, others for bass, predatory fish are destroyed and certain lakes are kept for experimental purposes. This scientific work is part of the rounded out picture of a great estate that is being preserved in all its natural beauty for sportsmen. The availability of it is a constant source of surprise to persons who investigate it for the first time.

A telephone call to the Protective Service advises the guides of your arrival. An automobile takes you fourteen miles over the Club's private road to Commandant landing, where your guide is waiting with food, bedding, tackle and supplies already stowed. You take your place in the canoe and days of good sport and nights of sound sleep are ahead.





At a cleared camp site on an obscure lake, which you have previously selected on the map upon the advice of your guide, you may settle down either to complete indolence or to the all-absorbing business of fishing. If you wish to be rugged and vigorous about it all, you can push off on your own, or, if you wish to be more leisurely your guide can relieve you of the drudgery which cooking and camp chores may become after the third or fourth day in the wilderness. You might care to explore or to have the boys in your party learn woodlore from the guides. Some day you may pay a neighborly call on the nearest ranger at his cabin and hear some of the tales of life in the winter in this country. Or perhaps you will call at Pine Cottage, the base camp for the guide service, where a brilliant reputation for good cooking has

grown up. It is a snug cabin among giant pines with a waterfall near by and a real birch bark wigwam that delights the hearts of small boys. Sometimes the deer come down to the salt licks on the Salmon River close by.



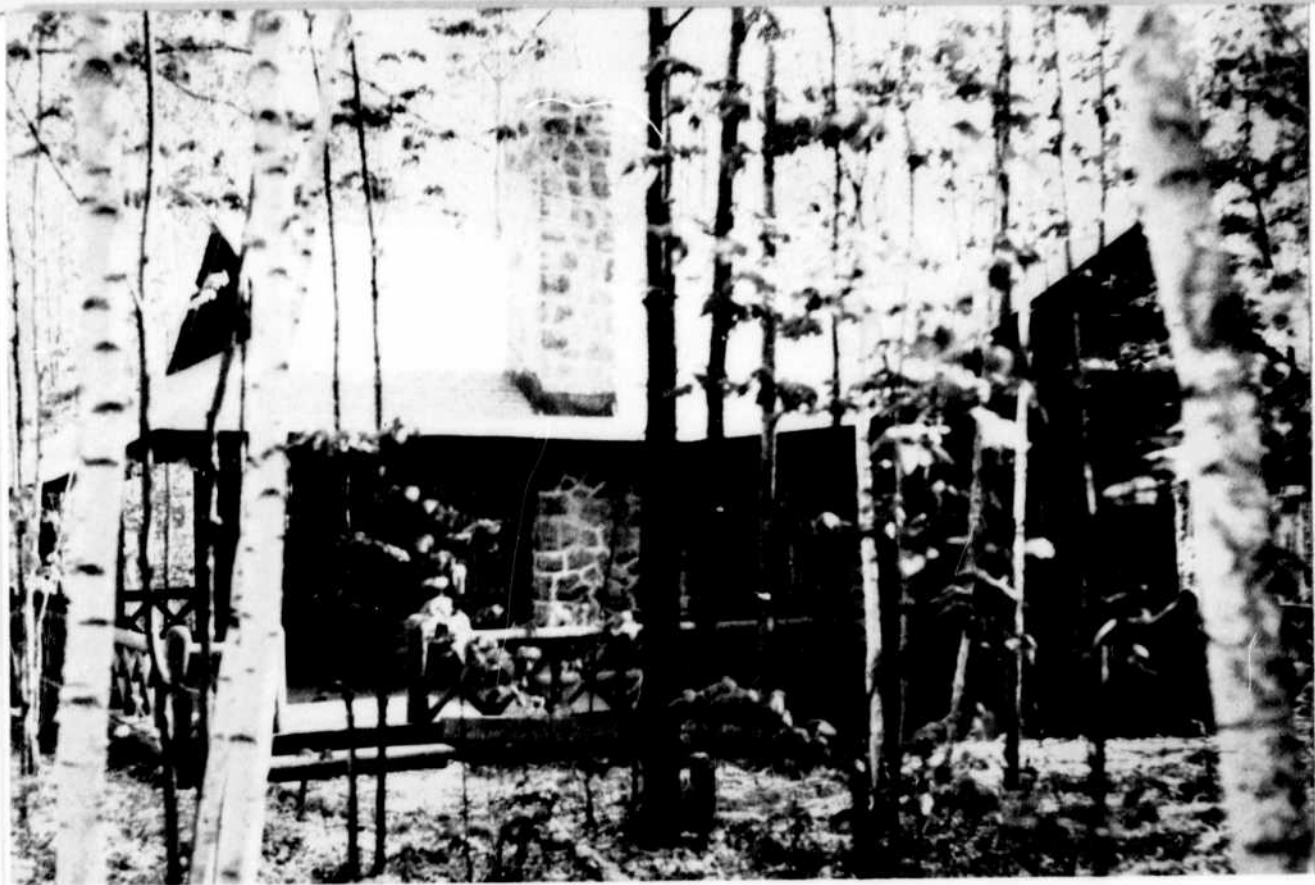
*Pine Cottage in the forest*



*A typical member's cabin*

## *The Cabin Community*

**T**HE cabin homes of Seigniory Club members present another picture in the book of life in this unique community. In these homes on the Laurentian mountain tops and slopes members may live and entertain privately quite independent of life at the Log Chateau or Papineau Manor. These cabins, designed by Club architects and built by the club's own craftsmen either for summer or year-round occupation, are individual masterpieces of good construction and good taste. All the conveniences of urban houses are brought to these cabins in the forest. After days of sport in the Club activities or in the forest one may return here to enjoy the companionship of family, books or friends. On a few hours' notice it is possible to bring one's guests here from distant cities for relaxation in the Canadian woods, and to make available to them the facilities of the Seigniory Club. The hunting lodge, the fishing camp, the summer cottage and the country home may be blended into these cabins, which are built to meet the requirements of the members.



*A perfect forest setting*



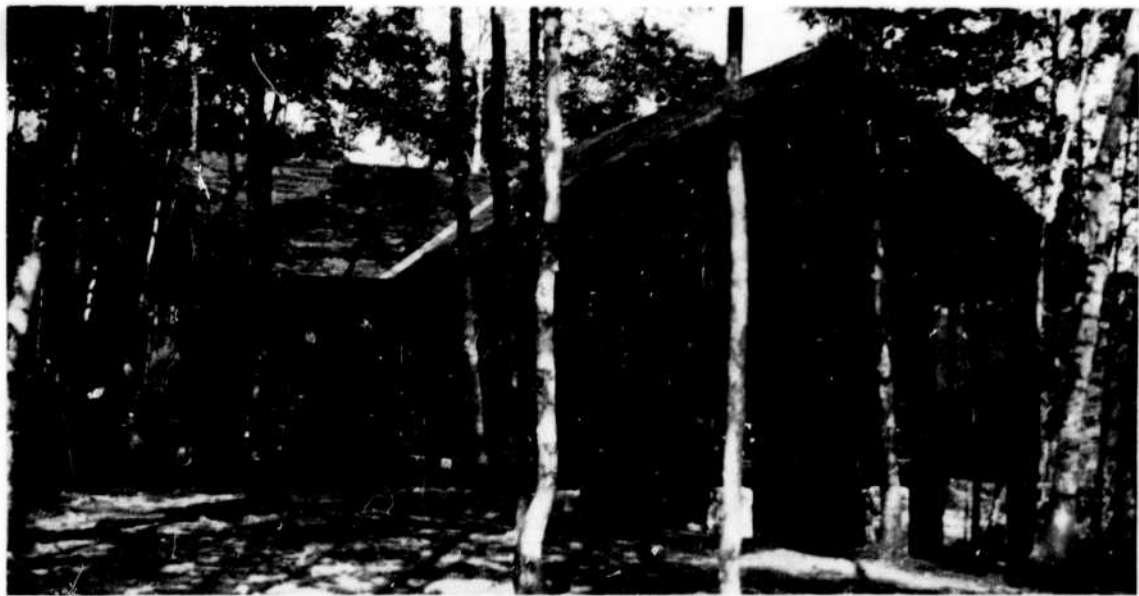
*A plan and the cabin home*





## *Cabin Craft*

**A**n expert knowledge of log construction gleaned from throughout the world has been applied to the cabin building at the Club. The log cabin technique of pioneer America, of eastern Russia and of the Scandinavian countries has contributed to the modern skill which produces the Club's structures and the private dwellings. Ruggedness and beauty have been combined to produce a type that will endure.



*An Attractive Type*

**C**AREFULLY planned having regard to vista and natural setting, these cabins are more than mere houses in the woods.

## *The Art of Log Construction*

**T**HERE is a popular delusion about log cabins to the effect that their construction is a simple matter and anyone with a working familiarity with tools can notch the logs and place them one upon the other and build himself a snug home in the forest. But few families could endure the discomforts of such cabins for many days. The Seignior Club's cabins are built of seasoned, selected logs, grooved to fit snugly and every chink filled with oakum and then caulked. It is sturdy construction adapted to the Canadian seasons and built for the generations. The stone fireplaces, the wrought iron fixtures and the stout furniture of natural wood are beautifully adaptable to these cabins. The results of extensive experimental work in the staining of logs and in the details of decorative wood carving and coloring are apparent in many Lucerne cabins. The achievements in this field of architecture have aroused widespread interest and favorable comment in professional circles.





*Another Cabin*





*The Log Chateau—Winter*

## *Winter*

**F**ROM the log station at Montebello, with its swinging lantern lights, to the snow-laden pines of the approach to the Chateau and the cheering log fires of welcome, the Seigniory Club takes on a fresh and delightful character in

winter. Sleigh bells and winter sports are in the air and long, leisurely evenings reach on through the winter holidays. At night the day's ski-ing and skating and tobogganing become the aperitifs of to-morrow's sport. The winter days make the blood run faster and the nights make for deeper sleep. It is here that children learn under the best instruction that keenest of all winter sports—ski-ing, and that their elders learn that winter holidays make perhaps the best of all vacations.





### *Winter Sports*

**I**n this winter picture of the Seigniorie Club, children find wonderful outdoor happiness. It is the perfect setting in which they can become easily familiar with these Canadian sports at their best. Impromptu contests on the rink or on the ski-ing hills are organized for their benefit and prizes and badges are awarded with gestures of Olympic championships. The sports department and the Log Chateau management have a special regard for the entertainment and care of children. Whether it is a matter of careful instruction for future sportsmen and sportswomen or the caring for smaller children while adult entertainment is in progress elsewhere, the special services of the Club are available.



*Juvenile Sports*

**T**HESE informal sports, quickly organized, such as the toboggan race on the rink shown above, frequently raise more local enthusiasm than the major sports fixtures of the week ends. In their unexpected alignments of Toronto and Boston youngsters competing against Montrealers and New Yorkers, the truly international character of the Seignior Club is displayed in the happiest circumstances.

*Down Hill*

**T**HERE is speed and there is skill in winter sports for those who seek them.



*Winter  
on the Links*

**T**HE Sports Club House is one of the friendliest spots in all Lucerne. On the winter afternoons the skiing parties congregate there for tea and refreshment before starting the last downhill run to the Log Chateau.

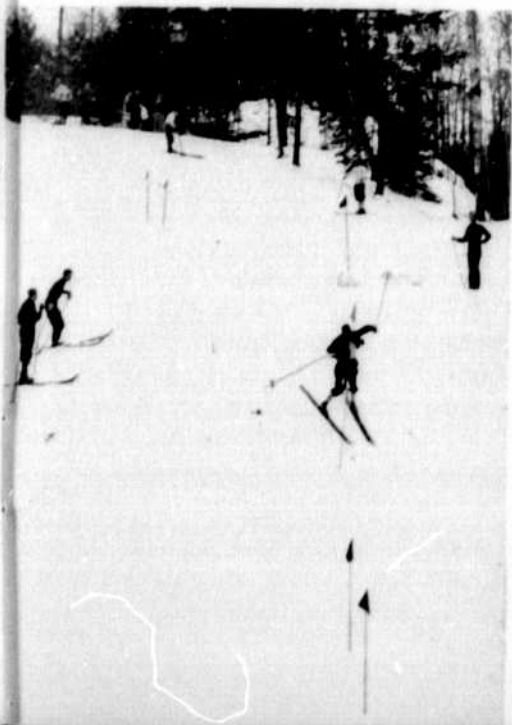
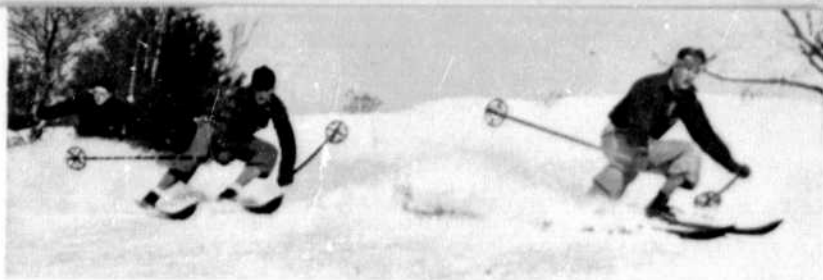


### *Ski-ing*

**F**ROM the spectator's viewpoint, the Club provides each year some of the most animated sports of the winter season. On their first visit to Canada the ski teams of Oxford and Cambridge Universities were at the Seignior Club. Intercollegiate sports also have an international flavor when the Intercollegiate Winter Sports Union meets. Colleges of the United States and Canada compete annually for the Dartmouth Cup. Such events as the Province of Quebec ski-ing championships and the Dominion of Canada championships are usually to be found on the winter sports program. But ski-ing at Lucerne is never regarded as a sport exclusively for experts and instruction has become one of the most highly valued features of those who enjoy the club privileges.



*The Slalom*



**S**KI-ING is a sport that assumes major proportions at the Seigniory Club. It is a sport that has developed its own jargon with allusions to telemarks, christianias, slaloms, wax and details of harness. It is an alluring and an absorbing sport in which the beginner is suddenly surprised to find himself as competent as the great average and in which an average skier is likely to find himself creeping into the competitive classes. Here is a sport in which the mastery of the technique offers notable returns in health and opens up new worlds of friendships.



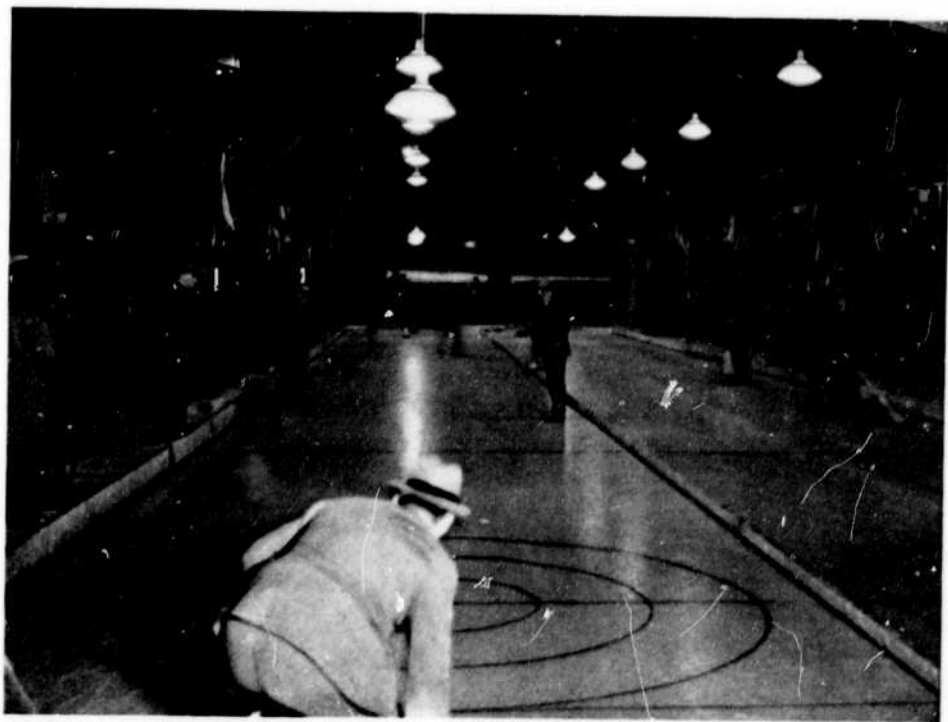
**W**HEN world contests in any of the winter sports are held in the United States or Canada, the Seignior Club invariably secures exhibition matches or displays. In the case of the 111 Olympic Winter Games, several foreign ski teams, as well as the Canadian team, trained at Lucerne for some weeks. After the games a number of the most celebrated figure skaters in the world were guests at the Club.

**E**XHIBITIONS of figure skating are always a great attraction to members. The large natural ice rink close by the Log Chateau is also the setting of a series of picturesque events during the winter months. Preparatory school and college hockey teams meet there frequently and there are skating exhibitions and costume carnivals. For distance skating races a circular track is cleared either on the ice of the harbor or on the Ottawa River. Horse racing is also an established institution and the Club offers a cup each season for local competition for trotting horses on the frozen track.

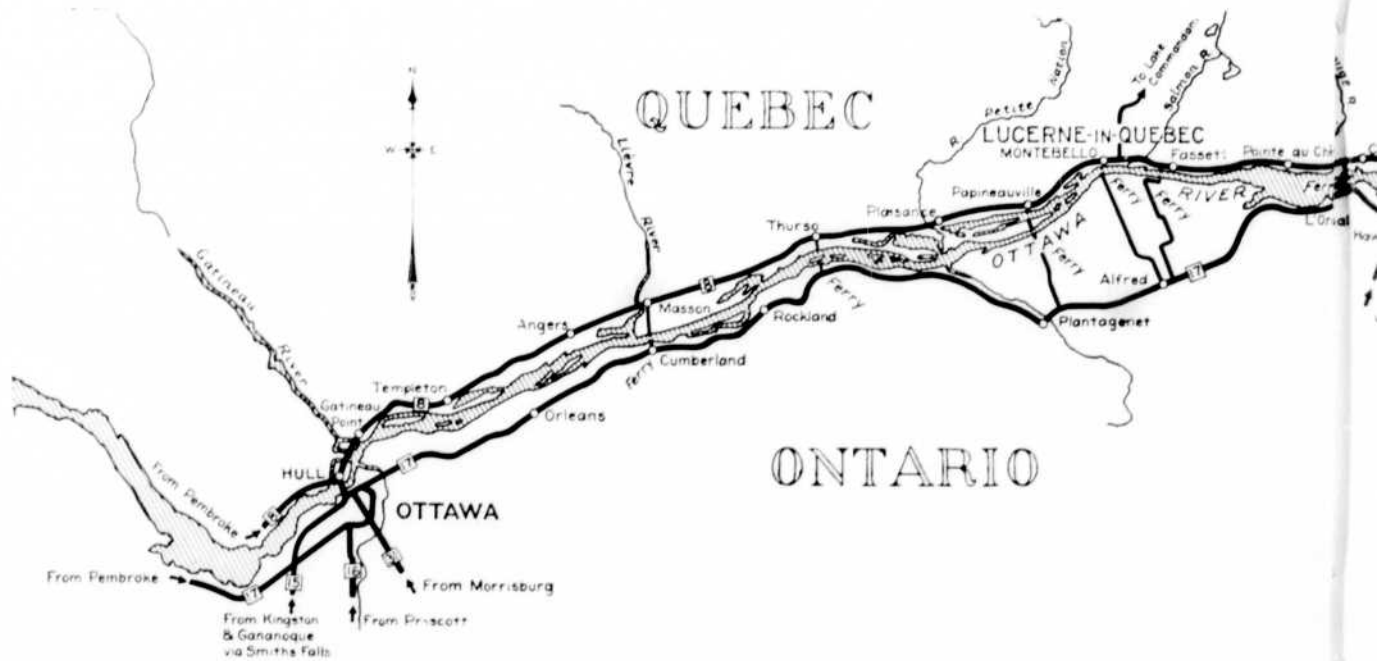


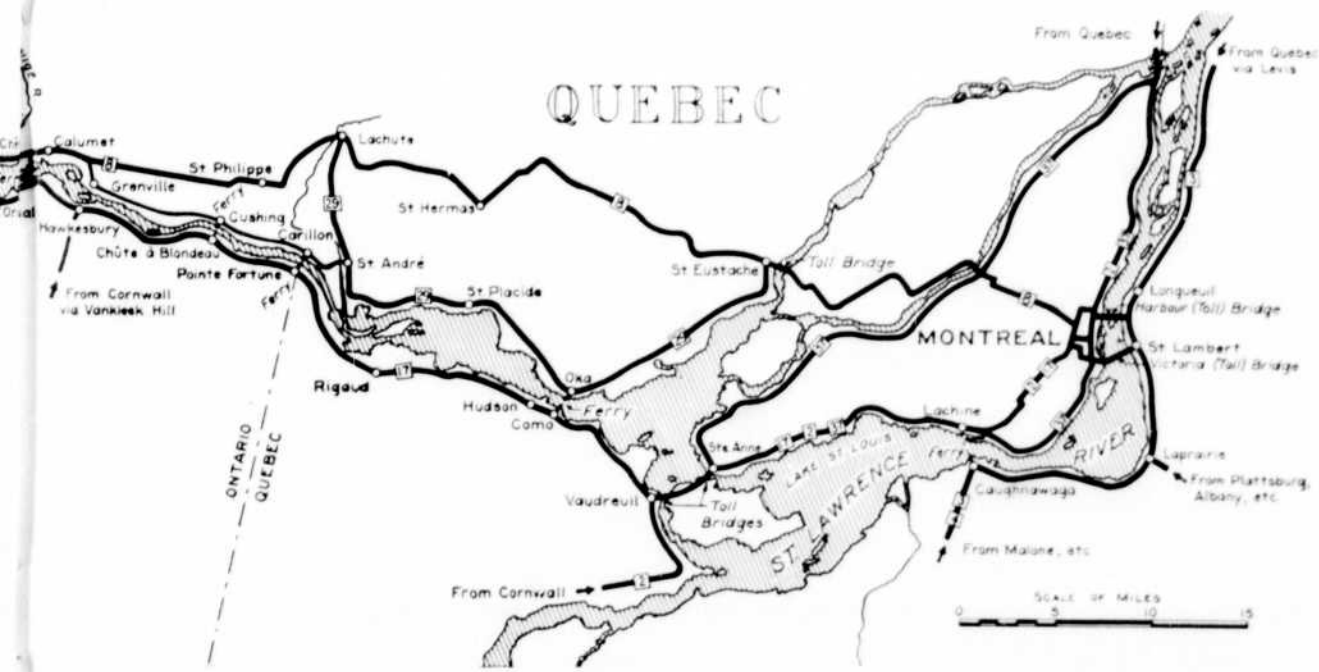


**S**ki jumping is, of course, the major spectacle of the winter, and on the Seigniory Club's sixty meter hill are held such contests as the Canadian Olympic trials, the Province of Quebec championships and the annual contest for the Lucerne Cup. It is an unusual meet if jumps of over two hundred feet are not recorded. Curling on the Club's artificial ice rinks opens in early December and continues until late March. It is a sport to which thousands in Canada are devoted and is also capable of infecting beginners with an enthusiasm only equalled in the world of golf.



*Curling*







## RIGHTS AND PRIVILEGES OF CHARTER LIFE MEMBERSHIP

*in the*

### *Seigniory Club of Lucerne-in-Quebec*

*First:* Freedom from the payment of any initiation fee or annual dues. This membership carries full privileges for dependent members of the family, including their right to use freely the golf course, tennis courts, swimming and many other recreational facilities, without payment of golf and other fees.

*Second:* A Lucerne-in-Quebec Seigniory Club member, in case he transfers his homesite, may resign and cause the election of a transferee, provided the latter is acceptable to the Board of Governors. Upon the death of a member his homesite will in like manner qualify an acceptable successor for membership.

*Third:* Ownership of 10,000 square feet of land (one sub-division) upon which a home may be built should the member so desire. No notarial or recording fees are payable in connection with the warranty deed.

*Fourth:* The Log Chateau club rates for rooms are available to Members and their dependent families. These rates are lower than the rates charged to members' guests, or persons introduced by members.

*Fifth:* The association will submit, upon request of a member, a variety of building plans and cost estimates for the construction of a home. In general, all private structures are restricted to log cabin or Swiss chalet type.

*Sixth:* The services and facilities of the construction and interior decorating departments of Lucerne-in-Quebec Community Association, Limited, at reasonable cost, for the construction, equipment and furnishing of the homes.

*Seventh:* Exclusive club fishing and hunting privileges on the Club's enormous game preserve of eighty thousand acres, in the heart of Canada's game country.

BIBLIOTHÈQUE  
SAINTE-SULPICE



# The Seignior Club

## Lucerne-in-Quebec

*Executive Offices:* DOMINION SQUARE BUILDING, MONTREAL, CANADA

*There are Seignior Club Representatives in the Eastern Cities  
of the United States and Canada*

### ERRATA

The phrase "Lucerne-in-Quebec", since the date of publication of this booklet, has been dropped from all matters referring to the Club, its name being now simply, The Seigniory Club. The association administering the Club is likewise The Seigniory Club Community Association, and the Post Office address is: Seigniory Club, P.Q., Canada. The railway station is Montebello, P.Q.

In error a reference is made herein to the Club's airport. This does not yet exist, though it will be laid out so soon as its existence is justified. In the meantime the waters of the Ottawa opposite the Log Chateau afford ideal landing for sea-planes and amphibians; and in the winter the ice provides perfect conditions for ski-equipped machines.

**BNQ**



**C 000 152 044**

152044

GAZETTE PRINTING COMPANY  
LIMITED  
PRINTED IN CANADA