

## Donald Ross — Pioneer in the Maple Sugar Industry

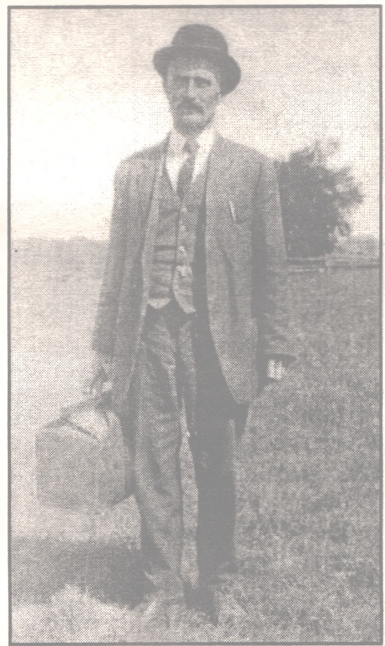
by Erma Ross Littlejohn

"Even one maple tree can give a little taste of Canada's maple syrup delicacy" said pioneer maple syrup equipment salesman the late Donald M. Ross, formerly of Lennoxville, Quebec. Mr. Ross worked for the Grimm Manufacturing Co. Montreal, and Small Bros. Dunham, Quebec, for over forty years promoting the Maple sugar Industry in Quebec, Maritimes and Ontario.

It is probable that Mr. Ross sold many of the original maple syrup evaporators to farmers in the Eastern Townships for their sugar shanties. He sold one of the first modern evaporators, the famous "Champion" made by the Grimm Manufacturing Co. A history of this evaporator was published in "Your Forests" magazine written by O. C. (Odie) Grimm as related to J. F. W. Gourlay and I quote "The metal evaporators replaced the iron pot for the "boiling down" of sap to make maple syrup and sugar. The leader in the production of maple syrup equipment, and, in particular the evaporator was G. H. Grimm Manufacturing Company whose evaporator made a name for itself from the start. They called it the "Champion". The equipment was first made in Hudson, Ohio, later in Rutland, VT. In 1884 an outlet was opened at 67 King Street, Montreal. Shortly after the company name became the Grimm Manufacturing Company locating to 736 Wellington Street, Montreal.

For many years, Mr. Ross also sold the Small Bros, "Lightning" evaporator which was well known for its efficiency in making syrup. As a young man in the early 1900's Mr. Ross worked as a "local Agent" selling the "Maple Leaf" evaporator, while living in Magog, Quebec. After becoming "General Agent" for the Grimm Manufacturing Co. he and his wife the former Euphemia Topping moved to Ayer's Cliff where the train service was better for his travelling. He serviced the sugarmakers with the necessary equipment and bought their syrup and sugar for the Grimm company and Quebec Maple Products, Lennoxville.

In summer, the pioneer salesman travelled by horse



**Donald M. Ross (1879-1956)**  
*Forty years in the Maple sugar industry in Quebec, Ontario and the Maritimes.*

and buggy over rough roads, in winter by train and horse and sleigh, dressed in a cool-lined heavy winter coat, lamb wedged hat, big fur gauntlets, and covered with a buffalo robe to keep him warm for the long drives to meet his agents at designated locations. From there, they would drive to the sugarmakers. He carried on his rounds a miniature hand-made model of the "Champion" Grimm Evaporator in a galvanized steel carrying case to demonstrate the art of making syrup to the farmers.

His first car was a Reo, side-cranked and chain driven. From 1912-1914 Model T Fords were his transportation changing cars each year, he wore out fourteen Fords before changing to other makes during the years he travelled thousands of miles. With the first sign of spring, and a smell of sap in the air, Mr. Ross tapped one of his grove of twenty-five maple trees, at his home, High Street, Lennoxville. He checked daily for the sap output to ascertain the season's production showing him approximately how many thousands of gallons of syrup and pounds of sugar he would buy that year.

Following the maple harvest, along with his agents he met with farmers at designated spots to buy syrup and sugar. Here he weighed it (a gallon of syrup regardless of grade must weigh 13 pounds, 2 ounces) graded it as to color, flavor, density and quality. It was shipped in twenty-five



**A Turkish woman works in a carpet factory. Muriel Brand tells the story of her visit to Turkey and shares her pictures on Pag 6 and 7.**

and forty-five gallon steel drums to the Montreal factory. (A forty-five gallon drum grade A syrup was shipped home for neighbours to enjoy, (the first gallon finding its way to the minister's home.).

Sugar was bought in various size cakes, two to twenty pounds, shipped in bags. The company had souvenirs of stones and other objects found in the sugar cakes to increase weight. Banks were scarce so Mr. Ross carried his money in the sole of his shoe. Some maple products were exported to the United States to be used in tobacco. Each spring a "taffy on snow" party was held at the Ross home when Mr. Ross took over the cooking, boiling the syrup to 235°F degrees ready to pour on pans of snow to be eaten with a fork along with doughnuts and sour pickles. Everyone looked forward to this spring party. "Collections" were made in the summer, af-

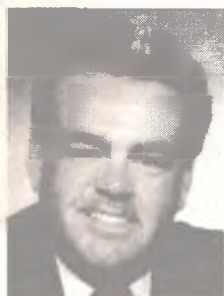
*Continued on Page 6*

### Inside 'The Sun'

Ascot's High	
Church Anglicans	7
Bookcase	13
Calendar	15
Donald Ross	1,6
Earthly Pleasures	12
Editorial	2
Evans Family	5
Events	14
Gardening	10
Lawn or Lake?	16
Letters	2
My Turkish Adventure	8,9
Stanstead County	
Agricultural Society	6
Townships Gourmet	13
Townships Tidings	4
Travel	11
Wildlife Week	16
Winter Birds	10
Video Showcase	11

Classified	14
Directory	14

### 25 Years and Still Shining



**Frank Cameron**  
C. Adm. R.F.P.

## Investors Group

3425 King Street West, Suite 140

Sherbrooke

[819] 566-0666

*Ask us about our personal financial program*



**Claude Favreau**  
B.B.A.  
Representative

## Editorial

### Help a Relative?

As we sit down to write an editorial we have no idea what to write about. There are so many subjects to cover that it eventually seems very difficult to do justice to any one of them.

Do you remember all those statements made when the government started reducing the monies allocated to the medical system. Remember "it won't reduce services" because all the cuts would come in the administration of the hospitals; because we didn't need that many hospitals or that many beds; because patients could go home sooner; because home care would be provided, because families would be able to take care of those so sent home."

We're sure you do.

Remember those statements when you hear about the conditions in hospitals today or when you read the stories about waiting lists for operations. Remember especially when you hear about someone being rushed back to a hospital because they become sicker once at home.

The same applies to all the other reductions made, work would just be done more efficiently so no actual reduction in services would result.

Well remember that last statement when trying to help a relative or friend. Try that one if you want a really exas-

perating run around.

Pick up the phone and try to find out if someone has received their GST for the past year.

It used to be enough to know the social insurance number of the person and you could get a simple 'yes' or 'no' and proceed to file the proper papers if the answer was 'no'.

Not so this year — this year, over the telephone, you are asked if you have a written authorization. We're not quite sure how one would show someone a written authorization over the phone, but then, this is our government.

Or try getting the office responsible for the Old Age Security supplement to go back and correct their work because they have made a mistake. It can't be done over the phone because they simply don't do things that way. Instead, send them a letter with copies of four pages of documents that they already have and which are already on their computers.

As more and more simple solutions to correcting problems are closed to us we know that they are only trying to do what we ask, work more efficiently, but some times with inconvenient and slightly strange results.

Patricia Ball



### Dear Editor,

I read your interesting article in the February issue on the Crimping of Norman MacKenzie. I thought that you might be interested in other ways in which Canadians were pressured into joining the American army during the Civil War.

My Great Grandfather, Alexander Solomon Walbridge, was born in Mystic, Quebec. He was raised in Quebec and at the appropriate age, he apprenticed in carpentry and iron working. Upon completion of his apprenticeship, he took a job as foreman of a foundry in Malone, New York. The pressure was put on him to vote in the upcoming election. All of the men in the shop were going to vote for Abe Lincoln and they wanted him to vote too. He said that he could not vote because he was Canadian. They argued that he was living in the United States and that for a time, his father had lived in the States before starting up a farm and hotel in Mystic.

Eventually, the peer pressure won out and on voting day, Alexander went down to vote with all the rest of the men from the shop. Shortly after the election, Alexander was visited by a representative of the American army who explained to him that if he was eligible to vote, he was also eligible to be drafted into the army. Upon being threatened with the draft, great grandfather decided it was time to head home to Mystic and safety from a war in which he did not want to be involved. He took a train that stopped

at the Rouses Point border crossing where he looked out and noticed that uniformed men from the northern army were searching the forward part of the train for people such as himself. He jumped off of the train on the side opposite to the station, noticed that on a different track, there was another train just pulling out heading north. He jumped onto the back of the moving train unnoticed thus escaping and eventually setting up his own iron works in Mystic in 1868. The farm on which it was located is still in the Walbridge family one hundred and thirty years later.

Jim Walbridge  
Fort McMurray, Alta.

### Dear Editor,

Always good to get news of Lennoxville and area. It is my home town, although the roots go pretty deep here in my adopted city, London, Ontario after fifty years.

Mrs. Edna Greenfield  
London, ON

### Dear Editor,

Enjoy your good variety of stories about the Townships.

Sheila Clark  
Richmond, B.C.

### Dear Editor,

Your efforts are not in vain. You are enjoyed and may you continue.

Audrey Frost  
Lennoxville, Qc

### Dear Editor,

I do enjoy The Townships Sun. There's always something of interest.

Mrs. A. B. Little  
Beebe, Qc

### Dear Editor,

Canadians have been angry over Senator Andrew Thompson's absence from work. From January to Octo-

ber of last year, this senator attended Parliament for only two days out of ninety-nine Senate sittings.

The Senate has acted to punish Mr. Thompson, first by stripping him of certain "perks" such as paid travel and having a secretary, and second by taking away his salary.

The trouble, however, is that Mr. Thompson has not been the only senator absent from work. Last year twenty-seven senators missed 40% or more of designated sittings. For example, Senator John Buchanan — a Brian Mulroney appointee — showed up only half the time last year.

We ask readers: what would happen if we were absent half the time from our place of work? Unlike senators — who are appointed by the Prime Minister and whose jobs are guaranteed for life — we would be fired.

We at WatchDog Newsletter have a list of the twenty-seven truant senators and their Senate mailing addresses. We are asking interested people to write to us for the list, and to write to some of the senators to ask them to attend all Senate sittings.

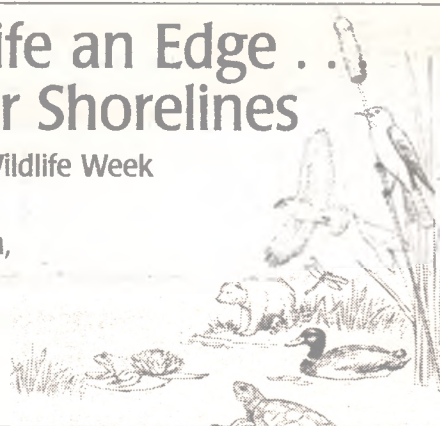
To receive our list of truant senators, please contact us at our address below, or e-mail us at dmurrell@unb.ca or fax us at [506] 454 8245.

David Murrell  
Editor  
WatchDog Newsletter  
247 Leeds Drive  
Fredericton, NB  
E3B 4S7

## Give Wildlife an Edge... Protect Our Shorelines

Celebrate National Wildlife Week  
April 5 - 11, 1998

For more information,  
call 1-800-563-WILD



## The Townships Sun

April 1998

Volume 25, No. 10

Published by  
The Townships Sun (1982) Ltd  
7 Conley Street  
P.O. Box 28  
Lennoxville, Quebec J1M 1Z3  
Publisher, Patricia Ball  
Guest Editor, Nancy Beattie  
Advertising Co-ordinator,  
Patricia Ball  
Financial Manager,  
Marlon Greenlay  
Advertising  
Ramona Garrett & Thelma Wright

### Board of Directors

Chairman  
Kathleen Hanna, Lennoxville  
Members  
Janet Angrave, Lennoxville  
Patricia Ball, Lennoxville  
Nancy Beattie, North Hatley  
Paulina Grant, Sherbrooke  
Betty Greer, Lennoxville  
Matthew Shepherd, Lennoxville  
Marlis Wehr, Massawippi

### Office Hours:

Monday to Friday  
9:00 a.m. to 12:00 noon  
7 Conley Street  
Lennoxville  
[819] 566-7424

### Objectives:

To publish the Townships Sun, and provide support to the English community of the Eastern Townships through publication of information in the form of feature stories, interviews and in depth articles, etcetera.

The Townships Sun welcomes manuscripts, letters, and anecdotes. Material should be double spaced, have a telephone number included and be addressed to the Editor. Material accepted is subject to editing and revision. While all reasonable care is taken, we accept no responsibility for loss or damage to unsolicited material. Unsolicited manuscripts will not be returned unless accompanied by a stamped, self-addressed envelope.

The opinions expressed by the writers are not necessarily the opinions of the Editor or The Board.

The Townships Sun is a non-profit organization publishing each month. All contents are copyright and may not be reproduced or translated without written permission from the publisher except by members of QCNA.

Member of QCNA, Quebec Community Newspaper Association; CARD, Canadian Advertising Rates & Data; and CCNA, Canadian Community Newspapers Association. Registered with La Bibliothèque Nationale de Québec. Publications Mail Registration No. 3764. Publication Mail Agreement #1233378.

—from the Townships Sun charter.

On January 7, 1998, the federal government unveiled *Gathering Strength - Canada's Aboriginal Action Plan* to renew its relationship with Aboriginal people in Canada. The spirit behind the plan is one of reconciliation, healing and renewal. Its aim is to build a joint plan for the future between Aboriginal people and the federal government. Its success depends on the participation of Aboriginal people, the Government of Canada, provincial and territorial governments, the private sector and Canadians as a whole.

# Gathering Strength

Canada's Aboriginal Action Plan

## What?

*Gathering Strength* is a renewal of our relationship with Aboriginal people. It is based on: recognizing past mistakes and injustices; commencing reconciliation, healing and renewal; and building a joint plan for the future.

## Why?

Conditions in Aboriginal communities generally are much worse than those of their non-Aboriginal neighbours. Many Aboriginal communities lack the appropriate institutions, resources and expertise needed to deal effectively with such serious problems as rates of infant mortality, youth suicide, unemployment and dependence on social assistance which are higher than the national average.

## When?

*Gathering Strength* is about taking steps today to give Aboriginal people - particularly Aboriginal youth and children - the promise of a better tomorrow.

## Who?

The success of *Gathering Strength* will depend on the determination of the Government of Canada, provincial and territorial governments and the private sector working with Aboriginal people.

## How?

At the heart of the Action Plan is a commitment to address the needs of communities by building real partnerships with Aboriginal people, including the development of mechanisms to recognize sustainable and accountable Aboriginal governments and institutions.

# Statement of Reconciliation

## Learning from the Past



As Aboriginal and non-Aboriginal Canadians seek to move forward together in a process of renewal, it is essential that we deal with the legacies of the past affecting the Aboriginal peoples of Canada, including the First Nations, Inuit and Metis. Our purpose is not to rewrite history but, rather, to learn from our past and to find ways to deal with the negative impacts that certain historical decisions continue to have in our society today.

The ancestors of First Nations, Inuit and Metis peoples lived on this continent long before explorers from other continents first came to North America. For thousands of years before this country was founded, they enjoyed their own forms of government. Diverse, vibrant Aboriginal nations had ways of life rooted in fundamental values concerning their relationships to the Creator, the environment, and each other, in the role of Elders as the living memory of their ancestors, and in their responsibilities as custodians of the lands, waters and resources of their homelands.

The assistance and spiritual values of the Aboriginal peoples who welcomed the newcomers to this continent too often have been forgotten. The contributions made by all Aboriginal peoples to Canada's development, and the contributions that they continue to make to our society today, have not been properly acknowledged. The Government of Canada today, on behalf of all Canadians, acknowledges those contributions.

Sadly, our history with respect to the treatment of Aboriginal people is not something in which we can take pride. Attitudes of racial and cultural superiority led to a suppression of Aboriginal culture and values. As a country, we are burdened by past actions that resulted in weakening the identity of Aboriginal peoples, suppressing their languages and cultures, and outlawing spiritual practices. We must recognize the impact of these actions on the once self-sustaining nations that were disaggregated, disrupted, limited or even destroyed by the dispossession of traditional territory, by the relocation of Aboriginal people, and by some provisions of the Indian Act. We must acknowledge that the result of these actions was the erosion of the political, economic and social systems of Aboriginal people and nations.

Against the backdrop of these historical legacies, it is a remarkable tribute to the strength and endurance of Aboriginal people that they have maintained their historic diversity and identity. The Government of Canada today formally expresses to all Aboriginal people in Canada our profound regret for past actions of the federal government which have contributed to these difficult pages in the history of our relationship together.

One aspect of our relationship with Aboriginal people over this period that requires particular attention is the Residential School system. This system separated many children from their families and communities and prevented them from speaking their own languages and from learning about their heritage and cultures. In the worst cases, it left legacies of personal pain and distress that continue to reverberate in Aboriginal communities to this day. Tragically, some children were the victims of physical and sexual abuse.

The Government of Canada acknowledges the role it played in the development and administration of these schools. Particularly to those individuals who experienced the tragedy of sexual and physical abuse at residential schools, and who have carried this burden believing that in some way they must be responsible, we wish to emphasize that what you experienced was not your fault and should never have happened. To those of you who suffered this tragedy at residential schools, we are deeply sorry.

In dealing with the legacies of the Residential School system, the Government of Canada proposes to work with First Nations, Inuit and Metis people, the Churches and other interested parties to resolve the longstanding issues that must be addressed. We need to work together on a healing strategy to assist individuals and communities in dealing with the consequences of this sad era of our history.

No attempt at reconciliation with Aboriginal people can be complete without reference to the sad events culminating in the death of Metis leader Louis Riel. These events cannot be undone; however, we can and will continue to look for ways of affirming the contributions of Metis people in Canada and of reflecting Louis Riel's proper place in Canada's history.

Reconciliation is an ongoing process. In renewing our partnership, we must ensure that the mistakes which marked our past relationship are not repeated. The Government of Canada recognizes that policies that sought to assimilate Aboriginal people, women and men, were not the way to build a strong country. We must instead continue to find ways in which Aboriginal people can participate fully in the economic, political, cultural and social life of Canada in a manner which preserves and enhances the collective identities of Aboriginal communities, and allows them to evolve and flourish in the future. Working together to achieve our shared goals will benefit all Canadians, Aboriginal and non-Aboriginal alike.

On behalf of the Government of Canada

*Jan Stewart*

THE HONOURABLE JAN STEWART, P.C., M.P.  
MINISTER OF INDIAN AFFAIRS AND  
NORTHERN DEVELOPMENT

*Ralph Goodale*

THE HONOURABLE RALPH GOODALE, P.C., M.P.  
FEDERAL INTERJECTORY FOR METIS AND  
NON-STATUS INDIANS

Canada

For more information call: (819) 997-0380  
or via the Internet at [www.inac.gc.ca](http://www.inac.gc.ca)

## Townships Tidings

### Anniversary

Agropur, the giant Quebec dairy products conglomerate, established in 1938, will celebrate sixty years of serving the Quebec farmers and citizens this year, 1998.

### Agropur Plants Stick Together

On January 9, at the height of the crisis, twenty-three plants — eight operated by Agropur, Natrel or Ultima Foods — representing over 50% of Quebec's milk — found themselves without power. This number included the four largest plants in Quebec, counting the Granby and Bon-Conseil cheese plants, the focal point of nearly 40% of Quebec's dairy production.

Spared by the ice storm, the Plessisville plant operated for more than a week at full capacity, seven days a week, twenty-four hours a day, receiving up to 600,000 litres of milk per day. It was able to resume normal operations on January 14, once power was restored at the Bon-Conseil plant.

At Natrel, the Quebec City plant provided support to the Saint-Bruno plant, deprived of power for two weeks, by taking over its production. As a result, the Amqui plant received 50,000 litres of cream from Saint-Bruno and Quebec City to produce butter normally manufactured by those two establishments. This is not to say, however, that Saint-Bruno was completely paralysed. Not by a long shot! The employees worked under extremely difficult conditions, without flinching. One small example they manually transferred the cases which are normally routed by conveyor. Plant Manager Gerry Verhoef told us that nearly 50,000 cases of products were handled in this way! Three days after the famous blackout, Saint-Bruno was supplying all South Shore distribution agents.

### Canada Tax Returns at Caisse

Federal income tax forms and guides are now available at all Caisses Desjardins. Next year this will be the only distribution point, replacing Canada Post.

### Recreation for the Handicapped

To take part in or learn more about programs offered in the recreational and cultural area in the Townships call [819] 820-3244.

### PFDs — Inflate for '98

Canadian approved inflatable personal flotation devices will be on the market this summer. Inflatables must — carry a ticket saying they are approved by the Canadian Coast Guard or Transport Canada; be worn when in an open boat or on deck; or readily available if below deck; worn inflated; or fitted at all times with a fully functional inflation cartridge.

### Product Recall

The Canadian Food Inspection Service has recalled all Made in Britain products containing meat. Check the labels.

### Honeybee Ban Extended

The Canadian Food Inspection Service has extended the ban on importing American honeybees in order to prevent an incursion of the varroa mite into Canada.

### Strong Showing in Japan

More than thirty Canadian companies exhibited at Foodex '98 held in Tokyo in March to boost export sales.

### Tax Evader Fined

Revenue Canada has announced that Abrit-Bec Inc. and its manager, Christian LeBlanc of Rock Forest have pleaded guilty to charges of tax evasion. Abrit-Bec Inc. was fined \$5,587. and LeBlanc \$9,645.

### Name The Foal Contest

The RCMP, in celebration of its 125th Anniversary is holding a "Name The Foal Contest". Open to residents of Canada under the age of eighteen, the contest requires a name starting with "R" not more than six letters in length. Print name, age, address and telephone number on plain paper along with the suggested name. Mail to The Royal Canadian Mounted Police, Ceremonies Branch, c/o Name the Foal Contest, Box 8900, Rockcliffe, ON K1A 0R2. Contest closes June 12, 1998.

### Affordable Housing Grants

Canada Mortgage and Housing Corporation (CMHC) awards worth up to \$20,000 each went to Chambre de commerce de Shawinigan, Shawinigan, Quebec; Julia Bourke Architecte, Montreal, Quebec; Habitat sur mesure enr., Montreal, Quebec; for their designs in low cost housing.

### Awards

"Phenix de l'environnement" is the name of new awards to be given May 28. These awards combine all of the principal awards given in the past by several different organizations.

### Green Ridge Baptist Church to Sponsor Blood Donor Clinic

The need for blood is constantly growing and it gets harder and harder to satisfy the demand. For this reason, Green Ridge Baptist Church has decided to organize a blood donor clinic on Monday, April 6th from 2:30 p.m. until 8:30 p.m..

Unfortunately, most people do not realize that without sufficient blood reserve, no major surgery can be performed. Every twenty seconds, someone in Canada needs blood. One unit of blood can help up to four patients. However, it may take up to twenty units of blood to perform one heart-lung transplant.

In order to be able to supply one hundred and forty Quebec hospitals, the Red Cross has mobile units travelling throughout the province. On April 6th, we urge all people between 18 and 70 years of age, who are in good health, to come and join us at Green Ridge Baptist Church. Whether you are a blue blooded aristocrat, a cold blooded strategist, a hot blooded artist, or a red blooded patriot, your gift of blood can help restore a person's health or even save a life.

## Blood Donor Clinic LENNOXVILLE

Sponsored by Green Ridge Baptist Church

**Monday, April 6, 1998**

Green Ridge Baptist Church  
47 Queen Street

**2:30 to 8:30 p.m.**



## Subscribe Today!

Please enclose cheque or money order payable to:

**The Townships Sun**  
Box 28, Lennoxville, QC J1M 1Z3

Name \_\_\_\_\_  
Address \_\_\_\_\_  
\_\_\_\_\_

New  
Renewal -  
Please include  
your subscriber number  
Four weeks notice of change  
of address is required

1 year - pensioner \$13.00  
1 year - regular \$16.00  
2 years - pensioner \$25.00  
2 years - regular \$30.00  
Call [819] 566-7424 for price of  
foreign subscription

# The Evans Family

by J. Clifford Moore

Another family which made an important contribution to the life of Kingsey was the Evans family. Their line of descent can be traced back to Robert Abbott, 1560-1617, Bishop of Salisbury. His distinguished brother, George, was Archbishop of Canterbury from 1611-1633, while another brother, Sir Maurice, was Lord Mayor of London.

With such an illustrious background, there was some misgiving on the part of the Abbott family when Elizabeth became engaged to the Reverend Henry Evans. Objections were raised as to his suitability as a husband for Elizabeth Abbott. However, some of his relatives pointed out the possibility that her future husband was pursuing a profession that might lead to a brilliant future.

Nevertheless, after his marriage, Henry Evans, with the two hundred pounds willed to him by his father, decided to emigrate to Canada. With his wife and family of four children, his sister-in-law, Marcella Abbott, a manservant and a maid, he set sail on the *Howey of Limerick* in the year 1832. The journey took a period of five weeks. After a six-week stay in Quebec City, they set out for Kingsey where they arrived at their log cabin on June 27, 1832. There, they settled on a farm bought from his brother, Frank Evans, which became known as Woodbrook. When the Reverend Henry Evans became ordained in 1844, he moved to Durham where he died in 1846. The family then moved back to Woodbrook. After his father's death, George, only sixteen years of age, undertook to operate the family farm. He married Harriet Trenholme, another important Kingsey family.

In the meantime, John Canon Evans, George's younger brother, had established himself on a farm called the Evergreens, about nine miles from Richmond. He had married Sarah Jane Nunns, daughter of William Nunns. They had three children — Ernest, Arthur and Dora. Mr. Nunns had built five flour mills as well as several sawmills throughout Quebec. When Ernest married Iva Wadleigh in 1895, his father gave him this farm.

Ernest was a very suc-

cessful farmer and businessman. He had a fine herd of dairy cattle and, as a result, produced excellent dairy butter which he packed for shipment to Montreal and Toronto. Apparently, he received many awards at agricultural fairs and exhibitions for the good quality of his butter. For the more efficient functioning of his farm, he built a grist mill and sawmill. To provide the necessary power to operate this machinery, Ernest had a treadmill operated by a fine pair of Clydesdale horses. In addition, he held the agency

for the Massey Harris machinery company.

When his father decided to retire from active work, Arthur succeeded to the title of Woodbrook. Unlike Ernest, Arthur was interested in horticultural activities and was quite successful.

When the Evans family left Kingsey in 1907, Ernest sold his business to the Cassin brothers, who continued to operate the butter factory for several years. Unwittingly, Ernest had left behind a real legacy to the Kingsey farming community.



## TRANSFER TO CANADA RRSP BONDS

Is a **guaranteed return**  
part of your **RRSP?**

You still have until April 1, 1998, to take advantage of a 100% guaranteed investment by transferring uninvested or maturing RRSP funds to Canada RRSP Bonds.

- Fully backed by the Government of Canada, so your investment is safe & secure
- 4.33% guaranteed annual compound rate if held for three years
- Guaranteed escalating rates for 3 years

- Cashable on anniversary without penalty
- Minimum purchase is only \$500
- No fees
- Available where you bank or invest

Hurry! The April 1 deadline is approaching fast.

**4.00%**  
YEAR 1

**4.25%**  
YEAR 2

**4.75%**  
YEAR 3

Canada RRSP Bonds

You're on solid ground.

1-800-575-5151  
www.cis-pec.gc.ca

Canada

## Donald Ross — Pioneer in the Maple Sugar Industry

*Continued from Page 1*

enter the sugarmakers had sold their produce they were in a better position to pay for equipment. This meant extensive travelling, sometimes Mrs. Ross and the family would accompany her husband, enjoying the scenery and becoming familiar with Quebec.

Fall Fairs played a vital role in the the sugaring business. Exhibits of maple sugar equipment were set up to attract buyers and tempting syrup and sugar displays whet the appetites of the Fair goers. The displays featuring figurines of prominent people, a bust of the late King George V made from maple sugar moulds was included. Mrs. Ross helped her husband set up the exhibits and remembered Cookshire Fair exhibit very well as her white linen table cloth on which the exhibit sat was stolen. Mr. Ross judged maple sugar and syrup exhibits at Sherbrooke, Quebec City and Ottawa Exhibitions as well as Eastern Townships' smaller fairs. One of his obligations as a judge was to eat codfish after each exhibit getting the ready for the next sample.

During sugaring, he encouraged people to visit the sugar bushes which provided fun for young and old. The charge for a "sugaring-off" in those days was thirty-five cents for all the taffy, doughnuts and pickles one could eat. Wooden paddles and bowls were provided for those wishing to stir taffy into soft sugar. Eggs were poached in hot syrup. Women discussed maple recipes made from this delicious sweetener. In some areas, women froze snow in boxes for a hot summer's day taffy party for guests on the dining room table. While walking through the woods, one could enjoy the beauty of the woods, a sunny invigorating place, crows having returned and skunk cabbage pushing through dead leaves. "A good place for the family and no generation gap at the sugar camp," said the veteran sugar salesman.

He retired from the maple business in 1952, about the time plastic buckets were introduced. He felt they wouldn't be practical, which proved to be the case. He would have appreciated the plastic pipeline system which revolutionized the maple

sugar industry, taking some of the drudgery out of the work in olden days. "The Maple leaf is not only the emblem of Canada, but a symbol of one of Canada's greatest industries" stated the late Donald M. Ross who helped develop the maple sugar industry in Canada for over forty years.

He died in 1956 in Reaboro, Ontario, at the home of his daughter, Erma Littlejohn and son-in-law, the late Guy Littlejohn.

*Erma Ross Littlejohn is a retired journalist, living in Lindsey, Ontario. She is currently writing the biography of the Rev. Dr. Topping, who served the parish of Leeds.*



## Stanstead County Agricultural Society

Plans are well under way for our 1998 exposition. It is a bit later this year, the dates are August 27-28-29-30, hopefully everyone will keep these dates in mind.

At our annual meeting held in December, Lyle Roarke took the seat as President, with George Knapp 1st Vice-President, Angus MacKinnon 2nd Vice President, Janie Webster secretary-treasurer, and James Crook auditor. The directors are Peter McHarg, Wendell Mosher, Douglas MacKinnon, Sandy Johnston, Leslie Webster, Richie Harrison, honorary-president and director Douglas Johnston, Richard Dezan, Dale Mosher, Jason Morse, Hubert and Janine Smith, Shirley Knapp, Rod MacLeod, Mervin Smith, Malcolm Juby, and Ida Little.

At the meeting we chose our committees, since then they have pretty much all held their own meetings and have proven to all be extremely well organized and know exactly where they are going. They work very well together and all show great interest in improving this year's fair.

Other business discussed since the annual meeting is upgrading some of the buildings such as putting down a false floor and tile in the kiddies corner, repairing the inside of the goat and sheep barn, finishing the paddocks, graveling and widening the back entrance, installing more power in the Holstein barn, installing lights around the horse ring and many other jobs.

Entry prices will be the same as last year, \$7.00 per day, \$15.00 for passes for non-exhibitors, and \$14.00 for exhibitors. Bracelets will be used again this year with paper passes being made available for those working in restaurants and other places.

The grounds have been rented throughout the summer for horse shows, a four-wheeler pull and some other activities.

The race committee is working on an extra race for July 5th, which is not quite certain at this point. I feel it is very important to thank Richard Dezan, Peter, and everyone else on this committee for the excellent job they do organizing these races.

Our attraction committee has chosen the entertainment which is Anita Perrez and Bobby Lalond Friday night following the official opening, of course, we hope to have the kiddies games Friday afternoon under the leadership of

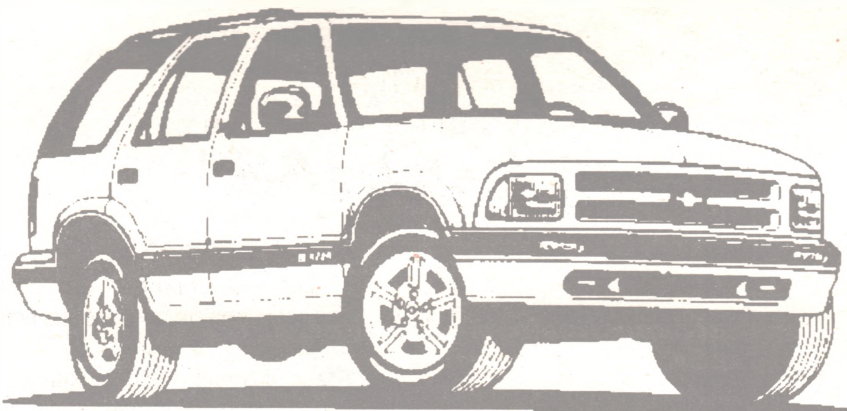
Suzanne Kohl who does an excellent job. Saturday afternoon we will feature the Parimutuel horse races, Saturday night the Guse Family will perform with a new show, Sunday afternoon the grand parade will take place, followed by heavy horse classes. Sunday evening the Hell Drivers with the monster trucks will perform. We will have great acts by Gastoni Attractions which will begin Thursday evening and tentatively, it looks like we will have local bands performing in front of the grandstand as well on Thursday evening. Hopefully Herb Sharman will be on our grounds again this year. Last year we were also treated to the lovely voice of Jeanne Mance Cormier, I hope she will return this year. It was great to have someone singing in English in one place and another in French. Beauce Carnival will bring in the midway. I also would like to mention there will be a difference in the sound system this year. With the assistance of Gaston Auger who brings in the acts, and Angus MacKinnon, who is in charge of this committee, I am certain there will be a noticeable change.

With all this entertainment we must not forget the importance of our exhibitors with their animals, the ladies department with arts, crafts, painting, sewing, knitting, and crocheting, the beautiful horticultural exhibits, and last, but not least, all those in the boutiques who give 100% of themselves in their beautiful work. Without exhibitors, there would be no fair. It is an Agricultural fair, one that is for everyone of all ages and nationalities. There is no language preference, just a warm welcome to everyone. Also let us all thank the many who donate their time throughout the year to the upkeep of the grounds, organizing the fair and also four very hard days work under a great deal of pressure. They all strive very hard to make this a memorable event.

We invite all those who have never exhibited before to come be a part of our show. It is a bit of work, but the benefits are endless. Not only do you get a chance to see just how good you are, but you meet some wonderful people and make new friends. It is a very interesting job and makes one very proud to be able to play a part in bringing something so wonderful to the community. If you have any questions, please call Janie at [819] 876-7317.

**1.9 %  
Financing**

**1998 Blazers**



**Up to 48 months  
on credit approval**

**Offer expires  
June 10, 1998**

**Dyson & Armstrong inc.**



CHEVROLET

**New Cars**

**265 Principale Street, Richmond**

**[819] 826-3721**



Oldsmobile.

**Used Cars**

**614 Craig Street, Richmond**

**[819] 826-3501**

**Long Distance**

**No Charge**

**1-800-263-9766**

## Ascot's High Church Anglicans

by Bernie Epps

The Anglican Church has left a stamp on the history of Lennoxville that makes it unlike any other place in the Eastern Townships.

As early as 1816, Bishop Jacob Mountain reported on Ascot Township to the Society for the Propagation of the Gospel in Foreign Parts; (SPG) "Mr. Felton, a gentleman of property who is settled there means to erect a church at his own expense and to make application for a clergyman."

William Bowman Felton had arrived with his family that spring to invest some 20,000 pounds (a million or more of today's dollars) in a 5,000 acre estate and manor he called 'Belvidere'. He'd been born in Gloucester in 1782, the son of a naval officer. At eighteen he'd followed his father into the service just as the British navy was reaching the apex of its glory. He did well enough to win appointment as 'naval agent victualer' at Gibraltar (a post he could not have attained without influence in high places). At twenty-nine he married Anna Maria Valls of Minorca and fathered William Locker Pickmore, the first of nine children. On the understanding he would be appointed Brit-

ish Consul in Leghorn, northern Italy, he resigned his position at Gibraltar then discovered the consular appointment was not to be and turned his attention toward Canada. To the Colonial Secretary, Lord Bathurst he wrote;

"Understanding that His Majesty's Government has it in contemplation to give encouragement to persons of respectability and capital disposed to settle in Canada. ... I offer to proceed immediately with my family, and in company with the families of three other gentlemen, to establish ourselves on the land allotted to us, a number of families of hemp-growers from northern Italy and some families from England.

The three other gentlemen were two younger brothers, John and Charles Bridgeman Felton, and a brother-in-law Charles Witcher. Nothing more was heard of the Italian hemp-growers but fifty-nine English labourers accompanied them to Canada to do the actual work.

They must have found it cold because 1816 went down in history as *The Year Without a Summer* when it snowed in every month of the year. But by the fall Felton claimed to

have 1,000 tilled and asked for a grant of 100 acres each for labourers who chose to stay when their three-year contracts expired.

After completing Belvidere (Felton always spelled it thus) Felton turned his attention to the mill-sites on the Magog and to building a church for the people of Ascot Township. In December, 1821, The Rev. Charles James Stewart passed through on his tireless missionary travels and wrote in his journal; "The frame of a church is there erected and partly enclosed and Mr. Felton, of Belvidere in Ascot, and the people of the place and vicinity promise to complete the church next summer and build a parsonage without delay." Two weeks later, the lot the church stood on was donated "towards the permanent establishment for the preaching of the Gospel in the said township of Ascot."

The church was 51' by 40', built of logs with a square tower on one end and Gothic windows tinted yellow. It stood near today's Elmwood Inn with a burial ground 'for all Christians' behind. It was consecrated as St. James' by Stewart, now Bishop, on February 10, 1830.

According to the 1831 Census, almost 30% of the population of the St. Francis District were nominally Anglicans while the majority of settlers elsewhere in the Townships were Methodists, Baptists, Congregationalists or Universalists — Dissenters all.

Anglican missionaries were paid by the SPG which was then reimbursed annually by the British Government. That made them financially independent of their nascent congregations and tied them more firmly to the mother church in England and the Imperial British government.

All of which contributed to the High Church character of Ascot's Anglicans — "At the solicitation of the highly respectable English residents of this vicinity," Lucius launched a grammar school next to his rectory in 1836 which evolved into today's Bishop's College

School and was instrumental in bringing the university that was intended to train Anglican clergy. The first principal, Jasper Hume Nicolls, was himself a priest and son-in-law to Bishop G. J. Mountain for whom the university is named. When the old St James' was torn down, much of its usable material was employed in constructing the university buildings and until St. Mark's was opened, the entire student body and faculty worshipped at St. George's (which replaced St. James' in 1845) where principals and professors often preached. All three institutions, University, grammar school, and church were inextricable tangled and impossible to separate from the mother church in Imperial England.

The which would come as a great surprise to today's student body.

DO YOU KNOW

THE ACT?



CNT

The Commission des Normes du Travail is keeping you informed!

The Act respecting Labour Standards contains numerous provisions. It deals with the following subjects in particular:

- Minimum wage and overtime
- Duration of the regular workweek
- Statutory holidays
- Annual leaves
- Special leaves with or without pay
- Calculation of indemnities for employees receiving tips
- Maternity leave and paternity leave
- Absences by reason of illness or accident
- Provisions relating to the termination of employment or dismissal

In addition, the Act protects employees by prohibiting employers from dismissing employees on certain grounds, or suspending, transferring or exercising discriminatory measures or reprisals against them. It also prohibits, after three years of uninterrupted service, dismissals not made for good and sufficient cause.

To find out more about the Act respecting Labour Standards or the recourses that it permits, contact Customer Services at the Commission des normes du travail.

Greater Montréal Area: 873-7061

Toll free: 1 800 265-1414

Internet: <http://www.cnt.gouv.qc.ca>



Gouvernement du Québec  
Commission des  
normes du travail

## My Turkish Adventure

by Muriel Brand

Why Turkey? was the most frequent question that I was asked when I announced that I was planning a trip with my daughter this past summer. It was her fiftieth birthday and it seemed like a great way to celebrate. Although she had travelled a good deal, neither she nor I had been in a mid-eastern country. I had never visited an Islamic country with a totally different culture. Turkey is the site of a great deal of ancient history and is still one of the few countries which remains relatively inexpensive. I had glowing reports from friends who had visited the country so we booked a ten day tour with Escapade, got our air tickets with British Airways and were on our way.

We flew into Heathrow after an uneventful overnight flight where we had to wait until late afternoon to get a flight to Istanbul. It poured rain all day so we spent the day in the airport. We never saw rain again until we were back at Heathrow three weeks later, when we were headed home. With the loss of time on our eastern flight, baggage pick up, etc. it was midnight when we reached our hotel. There was a message waiting for us that our wake up call would be at 4:30 a.m. as we were catching an early flight to Ankara, the capital.

Turkey is slightly larger than Texas with a tiny portion in Europe (Thrace) and the remainder in Asia known as Anatolia. We travelled by coach with a very knowledgeable guide whose training was in economics and who had just completed a book, "All You Ever Wanted to Know About Turkey". We probably visited about a third of the country, a good part of the journey being inland. Although Turkey is surrounded by four different seas, we only touched on the Aegean and the Sea Marmara.

In Ankara, one of the more modern cities of Turkey, we visited the Hittite museum and the mausoleum of Ataturk, Turkey's greatest leader in modern times. Ataturk's picture was on all Turkish money and his picture was displayed in all public buildings. He was responsible for bringing Turkey into the 20th century. He was highly regarded by our guide, who never ceased to recount his achievements. We continued that day through the province of Cappadocia where we visited a caravanserai — the legendary overnight stopping place for the silk caravans travelling across the country. This could easily have accommodated Marco Polo with his camels and entourage.



**Blue Mosque - once considered one of the seven wonders of the world**

Close by to the caravanserai I was able to observe and photograph some of the primitive agriculture typical of the area. Here we saw dung pellets which had been dried to serve as fuel, as well as small outbuilding of dried dung, used as a storage facility.

Forty percent of Turkey's population lives in the rural areas. It was not uncommon to see the women in their Islamic dress working in the fields in the intense heat. Thirty percent of Turkey is arable, one third of which can be irrigated. Turkey produces a wide variety of crops because of its wide range of temperatures. These range from the usual Canadian grains to citrus, cotton and rice in the Mediterranean. Near the Aegean we saw crops of grapes, tobacco, cotton and unending olive groves.

Among our many interesting stops was a visit to Goreme, a unique region of volcanic landscapes and rock hewn churches decorated with ancient wall paintings. In the Zelve valley we saw many more cave dwellings hewn out



**Storage facility made of dried dung**

of the porous volcanic ash known as tufa. We visited the city of Konya, home of the Whirling Dervish sect. Here we visited the mosque where we



**Hillside settlement and volcanic landscape.**

were required to remove our shoes and women must cover their head and limbs. Long skirts were handed out to both men and women who might be wearing shorts.

The following day we visited Pamukkale with its dazzling chalk-white array of fantastically shaped limestone terraces caused by thermal activity and a mixture of carbon dioxide and calcium running down the flanks of the hills. We moved on to visit the ruins of the Ancient Roman Hierapolis. This was our day for ruins and intense heat. We were glad of our Tilley hats and bottled water when temperatures were at 34 degrees Celsius. Next on our agenda was a visit to the ruins of Aphrodisias with its stadium, theatre and temple of Aphrodite.

Our overnight stay was at Izmir, a bustling Asiatic city. Here there were few women in the fundamentalist Islamic garb. At the end of the day, women were rushing home from the office as in any western city. What was strikingly

different from our cities was the ever presence of minarets from which the faithful are called to prayer five times a day. We counted eighteen minarets visible from our hotel balcony that evening. Here through cassette recordings and loudspeakers the call goes out, "Allah is the Greatest, Mohammed is his servant and his prophet, come to happiness, come salvation."

Our visit to Ephesus probably impressed me more than anything else in Turkey. In Canada we think Quebec City is old, in England we are impressed by the Tower of London and its history. However at Ephesus one is really in touch with antiquity. The Ephesus which has been unearthed is the Roman version dating back 2000 years with its colonnaded Arcadian Way, the facade of the Celsus Library, the amphitheater, baths and temples to a countless number of Roman gods. Another memorable stop was Troy with its legendary wooden horse. More impres-

Australia and New Zealand. No visit to Turkey for them would have been complete without a visit to the Gallipoli Peninsula and the Anzac Cove. We visited the Lone Pine Cemetery where so many of their countrymen of World War I were buried. They held a memorial service and did not hide their bitterness over this useless slaughter.

What will I remember most about Turkey? What struck me most was the almost total absence of a Christian presence which we take for granted in Canada. How could a country where the place names reminded us daily of the missionary journeys of the apostle Paul be so totally free of the Christian influence? Today Turkey is 99.3 percent Moslem, .03 percent Orthodox Christian.

When we left for Turkey we knew that there was danger of a coup by the army. One was certainly more aware of the presence of the army there more than in Canada. During our stay we received news of the resignation the Orthodox government which was replaced by a coalition. This news delighted our guide who treated everyone to a celebratory drink.

Would I recommend Turkey for a holiday? Certainly security is not a problem and cost is very affordable — half that of European countries. The food and accommodations are good. Be prepared to use bottled water for everything except bathing. Shopping is interesting and inexpensive. For a holiday with a difference



**Primitive agriculture and woman doing chores.**

sive was the archeological evidence of nine levels of habitation.

Our stay in Istanbul included visits to the Blue Mosque with its beautiful tiles, once classified as one of the seven wonders of the world, and St Sophia, once a cathedral and later a mosque. The Topaki Palace, once the home of the sultans now displays some of the world's largest emeralds and diamonds.

Three quarters of the group on the tour were from



Turkey is a great destination — one of the few places where you call still come home with money in your pocket!

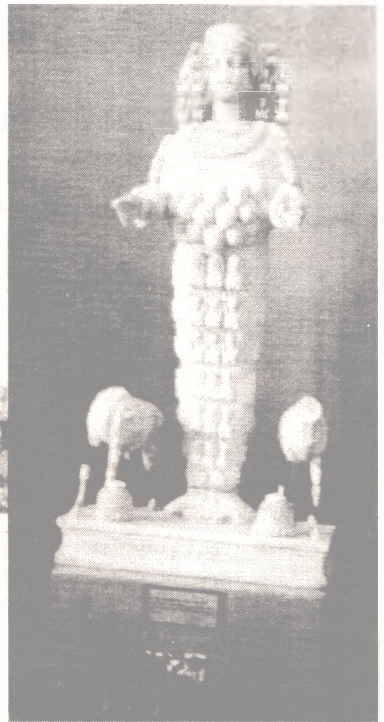
# Muriel Brand's Pictures of Turkey



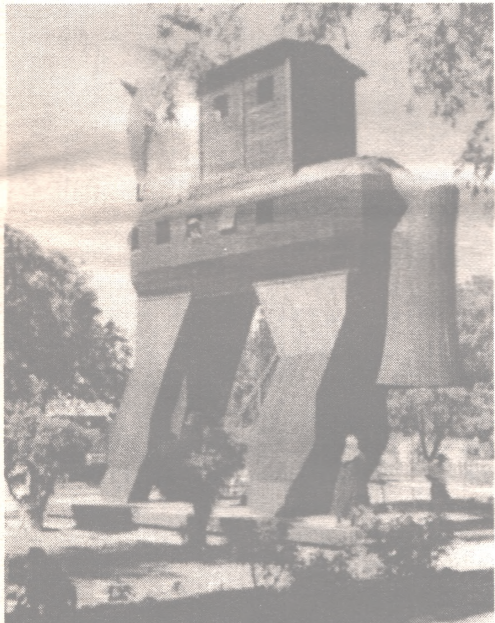
*This cut stone structure is a barn*



*A Konya street scene*



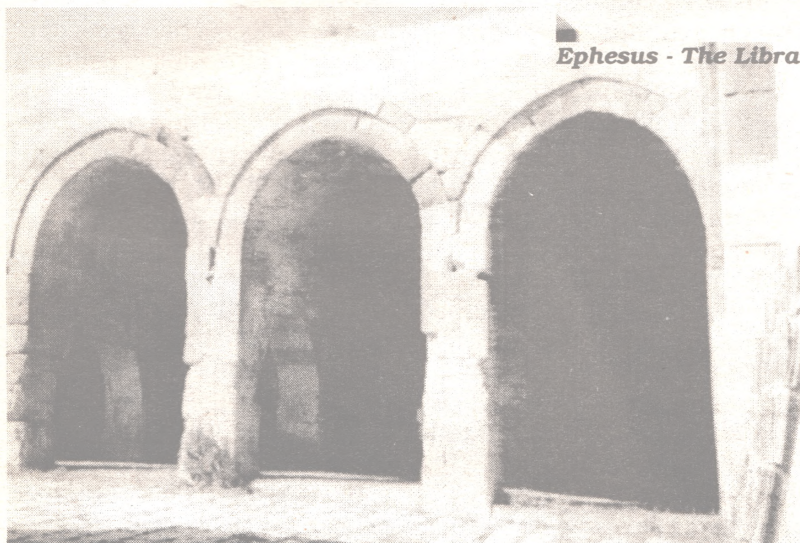
*Statue of the Great Mother Artemis*



*Trojan Horse*

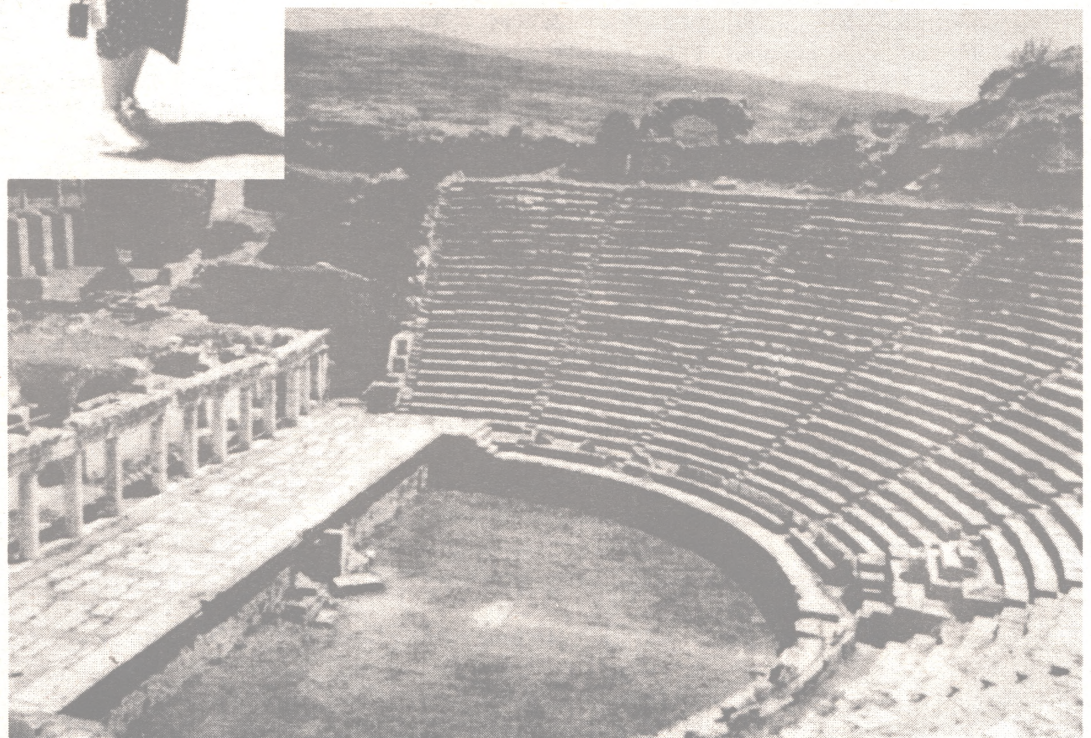


*House of John and Mary, Mother of Jesus*



*Cubicles of caravansary*

*Ephesus - The Library*



*This ancient amphitheater at Ephesus is still used for concerts*

# Winter Birds

by Robert W. Hall

The following is a report of birds appearing at feeders or seen in the areas indicated.

**Brompton:** Red-Winged Blackbirds, Black-Capped Chickadees, Crows, Mourning Doves, Blue Jays, Tree Sparrows, Starlings, and Cowbirds.

**Bury:** Red-Winged Blackbirds, Black-Capped Chickadees, Mourning Doves, Evening Grosbeaks, Pine Grosbeaks, Blue Jays, Common Redpolls, Starlings, Downy Woodpeckers, Hairy Woodpeckers, Ravens, and Rock Doves (Pigeons). Ann Ward's neighbour Muriel Fitzsimmons saw a female Cardinal and a Canada Jay (Whisky Jack) recently.

**Georgeville:** Black-Capped Chickadees, Mourning Doves, Purple Finch, Evening Grosbeaks, Common Redpolls, and Hairy Woodpeckers.

**North Hatley:** Red-Winged Blackbirds, American Goldfinch, Evening Grosbeaks, Common Grackles, Starlings, Downy and Hairy Woodpeckers.

**Hatley (Municipality of Hatley):** Snow Bunting, Black-Capped Chickadees, Crows, Common Redpolls, White Breasted Nuthatches, Red Breasted Nuthatches, Downy Woodpeckers, Hairy Woodpeckers, Brown Creeper, Ravens, and Rock Doves (Pigeons). John Pratt also reported hearing a Song Sparrow in Massawippi Cemetery.

**Hatley Village:** Snow Buntings, Black-Capped Chickadees, Crows, Mourning Doves, Evening Grosbeaks, Pine Grosbeaks, Blue Jays, Common Redpolls, Starlings, White Breasted Nuthatches, Downy and Hairy Woodpeckers. Suzanne Kohl reported that the Common Redpoll without any feathers (bald spot) on the top of its head is still coming to her feeders and seems to be doing well.

**Huntingville:** Black-Capped Chickadees, Common Redpolls and White-Breasted Nuthatches.

**Island Brook:** Black-Capped Chickadees, Crows, Evening Grosbeaks, Pine Grosbeaks, Blue Jays, Common Redpolls, Pine Siskins, White Breasted Nuthatches, Red Breasted Nuthatches, Downy and Hairy Woodpeckers.

**Kingsbury:** Snow Bunting, Black-Capped Chickadees, Crows, Purple Finch, American Goldfinch, Evening Grosbeaks, Pine Grosbeaks,

House Sparrows, Tree Sparrows, Starlings, White-Breasted Nuthatches, Downy Woodpecker, Hairy Woodpecker, and Ravens.

**Lennoxville:** Black-Capped Chickadees, Mourning Doves, Common Redpolls, Starlings, Downy and Hairy Woodpeckers.

**Martinville:** Snow Bunting, Black-Capped Chickadees, Common Grackles, Crows, Mourning Doves, Evening Grosbeaks, Pine Grosbeaks, Blue Jays, Common Redpolls, Tree Sparrows, Starlings, Cowbird (March 13), Downy and Hairy Woodpeckers. Eddie Echenberg had the good fortune to see forty deer in a field recently — what a great sight that must have been!

**1.5 miles north of Massawippi (on Stanstead Highway):** Red-Winged Blackbirds, Black-Capped Chickadees, Mourning Doves, American Goldfinches, Evening Grosbeaks, Pine Grosbeaks, Blue Jays, Common Redpolls, Downy and Hairy Woodpeckers.

**Melbourne:** Black-Capped Chickadees, Crows, and Pine Grosbeaks.

**Sherbrooke:** Black-Capped Chickadees and Crows.

**Waterville:** Black-Capped Chickadees, Crows, Mourning Doves, Blue Jays, and Starlings.

Helmut Hinrichs of Hatley Acres called me last week to report that he had seen a Tufted Titmouse on February 18th, and a Barred Owl (right in front of their window) on March 3rd. I also had reports of Canada Geese flying over the Hatley area (heading north). This seemed early, but two days later I heard a reporter on the radio saying he saw geese at Quebec City.

Gertrude Gagnon of North Hatley saw a robin the morning of March 19.

This is my last report until next fall. I take this opportunity to thank all those who contributed to this column and I also express my appreciation to readers who wrote letters to me and the Townships Sun. It is always a pleasure to hear from our readers. Have a good summer everyone.

**If anyone has spring bird arrivals to report, please call the 'Sun' at [819] 566-7424. If you wish to leave a message on our answering machine, please leave your name, place you are calling**

# Plant Wars

by Kathy Longworth

Everyone who gardens eventually ends up with one or more plants that cause him to say, "What was I thinking?" More often than not, the question arises a few weeks after having planted something that, while your back was turned, has become a veritable garden scourge, invading every nook and cranny and choking out almost everything in its path. Let's face it — there are just some plants we shouldn't plant!

Many of these takeover specialists are not even native to this country, but arrived here quite by accident in ships' ballast, people's clothing and luggage and so forth. Then there are some that were imported years ago by well-meaning botanists who felt North Americans should have the benefit of their favourite flowers and herbs. Dandelions and purslane would be good examples of the latter. It would certainly appear from the behaviour of some of these plants that they were only too happy to grow and propagate in their new home!

The other side of this coin is that, were we to avoid all invasive plants, we would be missing out on some very attractive and often very useful species. There must be a happy medium in here somewhere.

For purposes of illustration, I will divide plants into three groups, according to their level of misbehaviour. In all cases, these are examples only, and by no means an attempt at complete lists. The plants mentioned in each group, however, are commonly seen and should give you some idea of what to watch out for.



## #1 - Eradication Recommended

*Purple Loosestrife*

The nasty habits of this plant have been widely discussed in recent years, due to its penchant for choking out

often useful native plants and destroying wetlands with its huge root systems. Loosestrife not only spreads by underground rhizomes, but also by the thousands of viable seeds each plant produces annually.

For a while, the garden hybrids like "Morden Pink" were thought safe to plant because their roots spread slowly and they did not produce viable seed. It has been found, however, that the wild variety often crosses with it, producing fewer, but nonetheless just as viable and potentially destructive seeds as its wild parent. About the only way to rid your premises of Loosestrife is to religiously remove all flower heads before they have a chance to set seed, and keep digging it up. Even the tiniest piece of root will produce a new plant

*Goutweed/Bishop's Weed*

These are both the same plant with the same bad habits. The only difference is that Goutweed has plain green leaves, and Bishop's Weed has variegated green and white leaves. This is another plant that spreads both by rhizomes and seeds. Its will to live is beyond the comprehension of the average human. I have personally been acquainted with a patch of Bishop's Weed which was first thoroughly doused with a very potent herbicide, then covered in sheets of galvanized tin for a full twelve months just to make sure. A week after Dad removed the tin, it started to send up living shoots again.

Unbelievable!

*Bamboo*

There are various other names for this plant, most not fit to print here. It runs around underground by way of rhizomes, springing up randomly into daylight to form dense new clumps, seemingly in an attempt to eradicate your lawn.

As a solution for these latter two, I recommend **never** planting them in a flower bed where they can interfere with more civilized specimens. If you must have them in your yard, put them where you can mow around them, cutting off any new plants that venture forth. As well, in the case of Goutweed/Bishop's Weed, cut off every single flower stalk (they're not much to look at anyway) before they get a chance to set even one single seed.

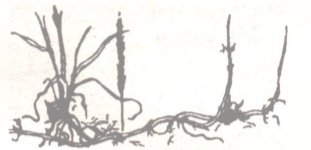
## #2 - Aggressive Control! Required

*Lily-of-the Valley, Orange Day Lily, Comfrey, Periwinkle/Myr-*



*tle, Tradescantia/Spider-Wort, Mint (all varieties), Jerusalem Artichoke, Sedum (most varieties)*

A good method of control for this group is to sink a bottomless bucket or other large container into the soil, leaving about 6 to 8 cm. above ground. Plant the specimen inside the container. Any run-



ners or other plant parts caught climbing over the edge get removed. This works particularly well with such things as Lily-of-the-Valley or Mint.

## #3 - Surveillance Recommended

*Sundrops/Evening Primrose, Bugleweed, Beebalm/Monarda, Tiger Lily, Canterbury Bells, Sedum Acre*

I have left for this third category plants that spread like mad, usually forming mats. However, due to their fairly shallow root systems, they are usually easy to remove from places where they're not welcome.

With all these precautions being said, it does pay to keep in mind that what's invasive in my yard due to soil quality, location, etc., may simply be a mild nuisance in your yard. It's a good idea to observe what grows rapidly and what doesn't in your neighbours' yards. This can give you a clue, too.

Finally, I wish to offer a couple of hints which may help you to avoid some of the more pesty garden plants:

1. If a garden centre, catalogue, or even plant label describes a plant as a "rampant grower" watch it — it'll get you!
2. Secondly, when you see what you know for certain to be a garden plant growing in a ditch or along a roadside somewhere, check it out in an encyclopedia or with a friend before you tenderly dig it up and move it into your garden. Finding it along the roadside should tell you something. It probably means somebody wanted to get rid of it. If it's hardy enough to take root where it fell, I would be suspicious. Just think, if it grows that well on the roadside, what will it do in the nice, fertile soil of your garden?

Apply a little caution and common sense and you won't have "Plant Wars" wreaking havoc in your garden!



**Video Showcase**

by Kathleen Hanna

**Academy Awards Time**

The term March Madness, which is used to describe the frenzied fans of the NCAA College Basketball Tournament could also be used in connection with the madness of Hollywood during the Oscar race. It could also describe our house during this period because Brian is a basketball enthusiast and I love the Academy Awards. It would therefore be appropriate to review movies that have some connection with this years nominees.

My choice, 'Grosse Pointe Blank', actually has performances by two of this years nominees; Minnie Driver and Joan Cusack. It stars Joan's brother John.

Martin is a stressed out hired killer. He is very good at his job, but recently things have not been working out as planned. For instance, there was the case where the victim's cause of death was supposed to be a heart attack. Unfortunately, at the last second he turned his head and consequently had to be shot. To atone for this mistake Martin is given another chance. His next victim is in Grosse Pointe, which just happens to be the location of his ten year high school reunion.

Martin is seeing a shrink to help him cope with his stress and asks if he should attend his reunion. His shrink advises him to go so he can resolve his recurring dream about Debi (she is the girl Martin left waiting to be picked up for the prom). He also suggests that Martin not kill anyone for the entire weekend. This might be difficult as he has a job to complete. To make matters worse a rival hired hitman, Grocer, wants to form a union of hitmen and is after Martin to join up.

Debi is an on air radio personality. She gets her revenge by humiliating Martin on air when he stops by to say hello. Afterwards they manage a civil conversation and agree to go to the reunion together. Meanwhile, Martin goes home to find a minimart in the spot where his house used to stand. He is surprised by a rogue hitman from the Basque region of Spain and there is a massive amount of destruction concluding in an explosion and no more minimart.

The reunion starts off slowly meeting old friends and continuing old feuds. Martin and Debi decide to leave early, but before they do Martin wants

to visit his old locker, Debi goes off to say goodbye to a friend. Martin is surprised at the locker by the Basque hitman. He has no gun, but manages to use a pen to finish off his attacker. Debi walks in at the worst possible moment and Martin, who in fact did tell her that he was a hitman, only she did not believe him, tries to explain. Well really, what does one say at a time like this?

Back at his hotel room, after disposing of the body in the school incinerator, Martin decides that all is lost and takes out the envelope which will tell him who is his victim. As fate would have it the man is Debi's father, who is scheduled for testifying at a grand jury. Perhaps there is hope yet, if Martin can save Debi's father.

There is enough action in this movie to keep a teenager happy. As so often happens in most movies where there is violence, the dialogue is the lowest common denominator, but in this movie the opposite is the case. The dialogue sparkles off the screen. John Cusack is very low keyed and controlled and Minnie Driver also does a terrific job. I would not recommend it for younger children, but certainly for teenagers and parents this is a film they can both enjoy.

Robert Duvall is nominated this year for the Best Actor Oscar, 'Tender Mercies' is one of his earlier films. The movie tells the story of a down-and-out country western singer who finds love and happiness in a sleepy little town with a widowed mother of a young son. When his daughter is killed in an automobile accident he finds it almost impossible to keep from falling back to his old ways.

Here is a coincidence that ties in nicely with this years awards, Duvall sings a song called "The Wings of a Dove" and Helena Bonahem Carter is nominated for her part in the movie "The Wings of a Dove". Apart from that bit of trivia, this is a wonderful movie thanks to the performances by Robert Duvall and Tess Harper.



**Let's Go!**  
by Ralph Smith

**... On a Cruise**

You have witnessed over the years several vacation formulae evolve within the travel marketplace Just as faithful as the arrival of winter, some of you would venture to what then was far away Florida.

Then nations of the Caribbean basin began attracting Canadians in the seventies with the "all inclusive" holiday package. Supply and demand evolved over the years to accommodate all segments of society.

If I were to ask "what do you like to do on vacation?" — the feedback I would get would be summed up three ways. There are those who like the active lifestyle. Some prefer sightseeing. Others just like to relax. Now, if we blend the "all inclusive" package with the last three categories, we've got the combined elements of a cruise!

The Cruise market is in rapid expansion. Carnival Cruise Lines began operations in 1972 at the port of Miami. Twelve ships currently make up its fleet with a thirteenth, the "Elation" due for launch by the year 2000. The "Elation" will be the first cruise liner in the industry serving "non-smoking" clientele.

On a recent familiarization tour which I attended the weekend of 20-23 February I had the opportunity to visit the following Carnival ships: "Imagination", "Sensation" and "Destiny". Sunday 22 February, my group and I were taken to the Port of Fort Lauderdale to see the "Costa Romantica" set sail and view the magnificent "Costa Victoria". The latter two vessels are operated by Costa Cruise Lines which is a division of Carnival.

"Sensation" went into service in 1993. It is of Panamanian registry, has a crew of 920 and can accommodate 2,040 passengers on board (based on double occupancy). Its gross tonnage is 70,367. Tonnage is used to determine a vessel's space ratio. In general space ratio varies between 15 and 50 on cruise liners. The higher the space ratio, the wider the living space. To know what this ratio is; divide the number of passengers a ship can accommodate by its tonnage. "Sensation" has twelve decks. Cabins are categorized, occupy all decks and are either interior or exterior. For example, cat 1 standard stands for interior category 1, located on the Riviera deck — that's easy for me to say, I'm looking at the floor plan as I write this. If

we do cross section overview of cabin categories to get an idea of living space, we get the following: category 1 standard: 160 square feet, category 4 interior and category 6 exterior, 185 square feet.

Amenities on board ship range from thematic lounges, a casino, swimming pools, fitness club, to daily activities for children. Carnival employs eight youth staff per ship. Activities are carried out in accordance with age — toddlers, ages 2 to 4; juniors, ages 5 to 7 and intermediates, ages 8 to 12. They also operate a baby sitting service.

Here is an outline of "Sensation's" itinerary:

Day	Port	Arrive	Depart
Sat	Miami		4 p.m.
Sun	at sea		
Mon	San Juan	6 p.m.	
Tue	San Juan		2 a.m.
Tue	St. Thomas	8 a.m.	5:30p.m.
Wed	St Maarten	7 a.m.	5 p.m.
Thu	at sea		
Fri	at sea		
Sat	Miami	8 a.m.	

Excursions at the various ports of call vary in duration and price. I recommend that if you go, buy your excursions at the start of your cruise since several of these have limited space. Each cabin is equipped with a close circuit TV. You can pick and choose your excursions from your cabin, using the interactive TV or simply by dropping by at the purser's office.

Ralph Smith is the owner of Voyages Vasco, Richmond. He can be reached at [819] 826-6000 - 1-888-322-2123 - fax [819] 826-1515 or e-mail voyage.richmond@sympatico.ca.

**Go figure!**

If just 1% more Canadians were physically active, annual savings in health-care costs could be as much as \$12,000,000.

Sharing a Healthier Future **PARTICIPATION**

**VOYAGE** FOR ALL YOUR TRAVEL NEEDS

- Individual travel
- Group travel (short and long stays)
- Business travel
- Cruises
- Travel insurance

82 Main Street North  
Richmond, Quebec  
JOB 2HO

[819] 826-6000  
1-888-322-2123  
fax: [819] 826-1515

e-mail : voyage.richmond@sympatico.ca Ralph Smith, Prop.

**A little exercise can go a long way!**

Walking 3 km in 35 minutes can do wonders for your health. It's that simple.

Sharing a Healthier Future **PARTICIPATION**

**Your friendly travel agency!**

Ask about our escorted bilingual bus tours and for our weekly specials.

346-2277 219 Queen St. - Lennoxville

## Cook with Maple Syrup

This winter's ice storm in Quebec, Ontario, and northern New England took its toll on sugar maple trees in some areas, but one benefit of the storm is to encourage cooks to appreciate the natural gift of this unique North American flavour.

The many ways that maple syrup can be used to create special dishes is the focus of a new cookbook by Nova Scotia author Elaine Elliot.

Elliot, the author of nine cookbooks featuring recipes collected from fine country inns and restaurants, admits that she was not much of a fan of maple syrup before she started her latest cookbook.

She's tasted a wide range of great recipes created by chefs in many of the best country inns and restaurants located in maple syrup producing areas of Canada and the United States; and she's learned to appreciate what it can do to make a recipe distinctive.

"As a flavour, I think it's just great. Most of the chefs tone down the sweetness, leaving a taste you can't get any other way — it's very distinctive."

This new recipe book, titled "Maple Syrup - 40 Recipes for Fine Dining at Home", covers a broad range, including breakfast and brunch dishes, vegetable and main courses, and desserts.

One good result of the ice storm, says Elliot, is that it may help everyone appreciate how unique maple syrup is as an all natural ingredient.

Elliot offers background on how sap is tapped from sugar maples in Eastern Canada and the New England states, and boiled down into such delicious products as maple syrup, maple cream or butter, maple candy, and maple sugar. Pure maple syrup, she points out, is a natural product containing no preservatives, artificial colours or flavourings.

Each recipe also is introduced with a short comment about how the maple ingredient is produced, how the dish is best served, or some interesting background on the chef who contributed the recipe. The dishes are further enhanced by full-colour photographs taken on location by award-winning photographer Julian Beveridge.

Elaine Elliot is a food enthusiast who has spent countless weekends seeking out new and exciting food ideas at fine restaurants and inns. For this collection, she sampled a wide range of maple creations from chefs in New England and Eastern Canada, then chose her favourites.

Maple Syrup, 40 Recipes for Fine Dining at Home, 64 pages paper \$12.95. Formac Distributing, 5502 Atlantic Street, Halifax, N.S. B3H 1G4 Telephone 1-800-565-1975, Fax 902-425-0166.

### Maple Parfait

*The Palliser Restaurant, Truro, NS*

Keltie Bruce of the Palliser relays the story that as a child she refused to eat Christmas pudding. Her mother developed this recipe and served it only for the holidays, thus they affectionately call it "Maple Christmas." At the restaurant they serve these elegant parfaits with a teaspoon of creme de cacao, a dollop of whipped cream, and chocolate sprinkles.

1/2 cup	pure maple syrup
2	eggs, at room temperature
1 cup	heavy cream (35% m.f.)
	creme de cacao, whipped cream
	and chocolate sprinkles for garnish

In a small saucepan heat maple syrup almost to a boil. Remove from heat and place in a mixing bowl. Add eggs and beat on medium high speed until mixture is fully blended, approximately 5 minutes. Refrigerate several hours until well chilled.

Whip heavy cream until stiff peaks form, then using an electric mixer, beat into maple mixture. Pour into parfait glasses, cover with plastic wrap and freeze. Remove from freezer 10 minutes before serving. Serves 6-8.



### Peerless Cranberry Maple Sugar Scones

*Wickwire House Bed and Breakfast, Kentville, NS*

Maple sugar, which is about twice as sweet as white sugar, is made by continuing to boil down the maple sap until the liquid has almost completely evaporated. At Wickwire House, the scones are served with jam or English Double Devon Cream.

1 1/2 cups	flour
1/4 cup	maple sugar
1 tsp	baking powder
1/4 tsp	salt
1/4 tsp	baking soda
1/3 cup	dried cranberries
	grated zest of 1 orange
	butter
1/3 cup	sour cream
1/2 cup	maple sugar (second amount)
1-2 Tbsps	

Preheat oven to 400°F. In a mixing bowl combine flour, maple sugar, baking powder, salt, and baking soda. Stir in dried cranberries and orange zest. Cut in butter until mixture resembles coarse crumbs, stir in sour cream.

Shape dough into a ball and pat into an 8-inch round on a lightly greased cookie sheet. Cut dough into eight wedges and sprinkle with additional maple sugar. Bake 18 to 20 minutes or until lightly browned. Yield 8 wedges.

### Parker's Lodge Maple Syrup

*The Parker's Lodge, Val-De-David, QC*

Guaranteed to satisfy the most discriminating sweet tooth, these squares are easy to prepare and oh, so delicious.

#### Base

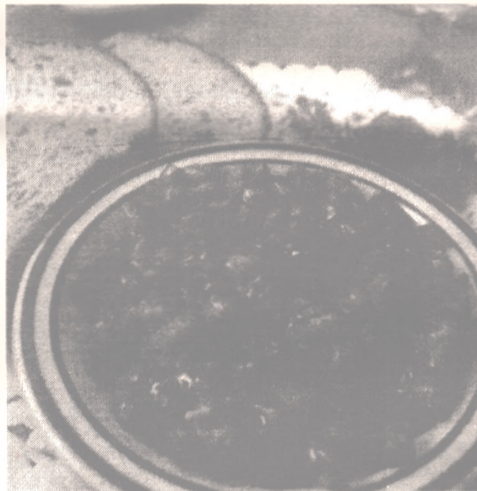
1/2 cup	butter
1/4 cup	brown sugar
1 cup	flour

#### Topping

2/3 cup	brown sugar, firmly packed
2	eggs, beaten
1/4 tsp	salt
1 cup	walnuts or pecans, chopped
1 cup	pure maple syrup
2 Tbsp	flour
1 tsp	vanilla

Preheat oven to 350°F. In a food processor or mixing bowl, combine butter, brown sugar, and flour and mix well. Press into a greased, floured 8-inch square baking pan; bake 15 minutes.

In a large bowl combine topping ingredients and pour over base. Return to oven and bake an additional 30 minutes or until topping is browned and bubbly. Cool and cut into squares.



### Nova Scotia Maple Syrup Baked Beans

*Liscombe Lodge, Liscomb Mills, NS*

At Liscombe Lodge the chef serves his maple infused baked beans with his breakfast menu. I think you will enjoy the delicate flavour of his rendition of baked beans.

1 pound	dry white beans, rinsed and cleaned
6 cups	water
6 slices	bacon, cut in 2-inch pieces
1	small onion, chopped
1/2 tsp	dry mustard
1 1/2 tsp	salt
1/2 cup	dark maple syrup
2 Tbsp	brown sugar
2 Tbsp	butter

Bring the beans and water to a boil in a large saucepan and boil for 2 minutes. Remove from heat and let stand, covered, for an hour. Return to a boil, reduce heat and simmer, covered, for 40 minutes. Drain, reserving cooking liquid.

Place half of the bacon in a bean crock, add beans. In a separate bowl combine the reserved cooking liquid, onion, dry mustard, salt and maple syrup. Pour over the beans and top with remaining bacon. Bake, covered at 325°F for about 3 hours, checking occasionally and adding a bit of water if beans appear dry.

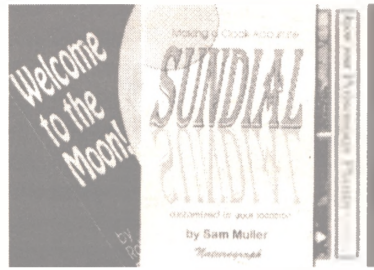
Cream together the brown sugar and butter. Sprinkle over the beans and bake, uncovered, an additional hour. Serves 6-8.



**The Bookcase**

by Marion Greenlay

Our books this month are from Naturegraph Publishers. P.O. Box 1075, Happy Camp, California 96039 Telephone 916-493-5353



**Making a Clock-Accurate Sundial**  
customized to your location  
by Sam Muller.  
paperback 58 pages  
\$8.95 U.S.

Sam Muller's career is as a teacher and educator. This book is intended for amateur scientists, nature lovers, science teachers, students, astronomy clubs, gardeners and woodworkers. It starts with complete instructions for building a cardboard model of a sundial and how to set it up to record the time. After you are satisfied that your model is working accurately, the next chapter gives instructions for making one out of wood. Following chapters deal with selecting the best spot for your sundial, setting the time on the sundial, and using the sundial as a moondial.

This book is well written, easy to read, contains good, clear diagrams and scientific information on the way a sundial works.

**Welcome to the Moon**  
by Robert Bruce Kelsey  
paperback 110 pages  
\$11.95 U.S.

*Welcome to the Moon* shows you how to use your backyard telescope, how to observe the moon, and what to look for.

Starting with the new moon, through to the full moon, you will go on twelve lunar expeditions. All of the Apollo landing sites, except for Apollo 16, will be visited. You will visit places with names like Mare Crisium, Mare Tranquillitatis, Montes Taurus and Caucasus Mountains. You will learn to find places by crater hopping, and to identify mountain chains, lava flows, flood plains and seas.

This book contains drawings of the sites, information on lunar history, and a glossary of lunar terms. It is very interesting reading. The author states that every expedition in this book is suitable for a small telescope. Small means a 2.4 inch (60 cm) refractor and up to a 4 inch reflector. The observation drawings were made with a 60mm

and 80mm refractors and a 4.25 inch "rich field" reflector, using plössl eyepieces and in some cases a 2x barlow lens. **Know Your Poisonous Plants** by Wilma Roberts James, with illustrations by Arla Lippmeyer Paperback 100 pages ISBN 0-87961-012-3 \$8.95 U.S.

Although the writer is a native Californian, most of the plants covered in this book are common to both United States and Canada.

Sixty-five species of plants are described and illustrated, a page apiece. Fifteen additional pages of seventy-five species are included with briefer descriptions and illustrations. There is a page on preventing plant poisoning. One very nice feature of this book is that the plants are in alphabetical order by the common name.

All parts, especially fruit



**excerpt:**

"*Jerusalem Cherry, solanum pseudo-capsicum (Nightshade Family)*

This (usually) annual herb, or evergreen shrub 2 - 4 feet high, can be grown anywhere in a container for indoor winter decoration and placed outdoors in the summer. It is much propagated in greenhouses and sold for use at Christmas time. Jerusalem cherry has many dwarf strains which are more popular than taller kinds because they bear showier fruits. Leaves are deep-green, shiny, wavy, oblongish and about 4 inches long. The 1/2 inch wide white flowers are borne in clusters. Globular fruits, about 1/2 inch in diameter are ordinarily scarlet, but

sometimes yellow, and resemble miniature tomatoes. The plant blooms, fruits, and seeds itself throughout the year in the warmer regions of the United States. This entire plant, a relative to the potato, contains dangerous solanum alkaloids. Children have been poisoned by nibbling on the leaves and eating the attractive, bright-coloured fruits. (Native of the Old World)

**Poisonous** — All parts, especially fruit

**Signs of Poisoning** — Ingesting parts of the plant may make the mouth unusually moist. There will be changes in the heart rate, profuse perspiration, drowsiness, trembling, extreme weakness, and other circulatory disturbances as well."

**Other information:**

**Apples** — The seeds contain cyanide and should not be eaten. Eating large quantities could result in poisoning.

**Peaches and Apricots** — the nut inside the stone contains cyanide and should not be eaten.

**Tomatoes** — the foliage and vines contain alkaloid poisons (solanine) and should not be given to livestock.

**Vegetable Encyclopedia**

Here's a book for the dedicated home gardener. *Vegetables of Canada* is an encyclopedia of just about every vegetable grown in Canada. The lavishly illustrated guide details nomenclature, uses and cultivation requirements for almost one hundred vegetables. As well, there is human interest information and a summary of vegetable problems and potential.

Derek Munro and Dr. Ernest Small authored *Vegetables of Canada*. It is an ideal companion to the book, *Culinary Herbs*. Information: Derek Munro, Eastern Cereal and Oilseed Research Centre, AAFC, Ottawa, [613] 759-6636 or <http://www.cisti.nrc.ca/clsti/Journals/cat.html#Mblosciences>

**WOODKNOT BOOK SHOP**  
Finest Bookstore South of the Border

49 Main Street  
Newport, VT [802] 334-6720

**A Richmond Restaurant**



**Townships Gourmet**

Driving into the parking lot for lunch we found it necessary to park way off to the side. All the near places were full.

The restaurant was filled almost to capacity, with only three or four of the booths still vacant. In addition to the booths, there is a section with three tables for different sized groups. Clients were a cross-section of the population of the Richmond area.

The room was functionally decorated in the style familiar to small restaurants where service and food are the strong points.

This one did not disappoint. The menu of four specials was posted on the wall. Soupe de jour, dessert and beverage were included.

The pizza and fries was one choice. An eight inch pizza smothered in pepperoni and cheese, with a pile of fries, was too big a meal for us, but just right for a hard working man. The fries were a cut above average — they still tasted good and like a potato, not greasy, even after we let them get cold.

Other specials were — spaghetti with a sauce con-

taining chicken and mushrooms, served with a garnish of green peppers and sliced mushrooms. It was a popular dish. A hamburger on a bun was served with mushroom gravy poured over it and side dishes of coleslaw and fries. A chicken dinner was chicken served with vegetables. Dessert was cottage pudding - cake with sugar sauce. The coffee was excellent.

Though there was a television on, the sound must have been off or very, very low. The whole room was quiet. The restaurant is clean and well staffed. The staff is pleasant and bilingual. The service was not slow in spite of the number of clients.

Prices are high to medium for the specials. No other menu was offered. Reservations can be made. There is not a no smoking area.

**Restaurant L'Express**  
382 Craig Street  
Richmond, Qc  
[819] 826-2992

**Hudon & Vigneux inc.**  
Quincaillerie • Hardware

471, Principale ouest  
Magog, QC J1X 2B2 [819] 843-3530

Since 1913

6 Belvidere [819] 564-1750  
Siège social

Lennoxville, Que.  
1-800-567-6031  
Main Office

39 Dufferin, Stanstead  
900 Clough, Ayer's Cliff  
50 Craig, Cookshire  
15 Station, Sawyerville  
295 Principale, Richmond  
554 Main, Bury

Offering traditional, pre-arrangement and cremation services

## Events ... Events ... Events ...

Antiques Roadshow Tour of Britain  
June 15 - 26, 1998

Followers of the immensely popular BBC television series, Antiques Roadshow, will be particularly interested in this exclusive, escorted tour from Seagram Pearce Travel. The twelve day Antiques Roadshow Tour of Britain features privately arranged attendance at two filmings of the BBC's TV series, one at Disley, Cheshire and one in Poole, Dorset. The tour also includes a visit to Southeby's Auction House, the Grosvenor House Antiques Fair (arguably the UK's largest), and several cities and towns whose rich antiques heritage make them prime hunting grounds for all antiques lovers — serious collectors and keen browsers alike. There will be plenty of time for sightseeing and non-antiques related activities as well. Group size is limited to twenty-five members.

Cost: \$3,806 per person (based on double occupancy) includes Air fare from Toronto to London, all transfers, hotels, entrance fees, breakfast daily, two lunches, two dinners, all gratuities except coach driver and guide (discretionary). Departure taxes are extra.

Judy Griffn, Seagram Pearce Travel, [416] 923-3666 or 1-800-871-7410.

The Lennoxville Ascot Historical & Museum Society presents historical talk and tea Thursday March 26, at 2:30 p.m. at the Uplands Museum.

Nancy Beattie, a Bishop's University history student, will give an illustrated presentation about her Canadian Battlefields tour with the Canadian Battle of Normandy Foundation in the summer of 1997. The tour began in Portsmouth England where troops were stationed for much of the second world war and traced their path across the channel to the D Day invasion of the beaches of Normandy. Everyone is welcome to attend this special event.

Uplands Museum is located at 9 Speid street, Lennoxville. For further information phone the Museum at [819] 564-0409.

April 3 to 5 at the Palais des congrès, Montreal, the Flowers, Plant and Garden Show will take place in conjunction with the Summer Holiday Show.

A spring extravaganza! More fascinating and enchanting than ever, the Flowers, Plant and Garden Show presents, in collaboration with Editions Versicolores, sixteen gardens as part of the "Flowers, Plants and Gardens Popular Award." This contest lets visitors vote for their favourite layout.

You'll find gardens galore: water gardens, Japanese gardens, English gardens, rustic gardens and many more, designed and created by experts including landscaping firms, schools in Quebec and Ontario and landscaping architects.

In addition, visitors are invited to enter the intimate and inviting universe of the Lovers' Garden, presented by students of the Ecole professionnelle de Saint-Hyacinthe. Outside the competition, this large area garden where living is easy, is guaranteed to make your emotions spring to life.

This year, the Flowers, Plant and Garden Show, the largest event of its kind in Quebec, is proud to present the Market Place, where all your questions will be answered. You can find out about what's new in 1998 and pick up rare species of perennials and annual plants.

Flowers are really cooking at the show! During your visit, you can sample edible flowers and meet the Croque-Fleurs experts, who will serve up secrets on how to give your table flower power.

The ever popular Conference Place will be hosted by Bertrand Dumont, editor in chief of the magazine Fleurs, Plantes et Jardins. Renowned columnists and horticulture experts will cover current topics and the newest trends.

Last of all, the Florist Place is a sure crowd pleaser. Take in bouquet design demonstrations, and all bouquets are available at reasonable prices.

## Townships Classified

### FOR SALE

St. Peter's A.C.W. Thrift Shop, 200 Montreal, Sherbrooke. We offer new and nearly new clothing for men, women and children, as well as housewares, books, and many other items. Open every Wednesday, from 9:00 a.m. to 1:00 p.m.

Four winter coats in good condition - to give away. [819] 837-2143.

RCA upright freezer, white, approximately 8 cu. ft., 1975 model. \$80.00. [819] 569-4565.

Copies of "The History of Compton County" by the C.S. Channell. Coil-bound, semisoft cover. \$55.00 [819] 889-2284.

Knitted articles on order or at the VIP Boutique in Martinville. Call Vera [819] 835-5385.

Solid chocolate Easter bunnies @3.50. Proceeds for Lions Club. Something new next year. [819] 821-2256. 76 Belvidere, Apt. 2, Lennoxville.

Stereo and speakers, LP records, AM/FM radio, Sega game, lamps, jewellery, clock radios, toaster, electric kettles, sockets wrenches, - standard and metric, car jack. [819] 821-2258.

Crocheted pot holders, hand-knit baby sweaters, new size 28 mens' pants, size 36 mens' cords, three-dimensional paintings, roller blinds, - like new, balls of material for rug making. [819] 821-2256.

### FOR RENT

Melbourne — self-contained house, space for garden, artesian well. Close to town. [819] 826-2832.

### WANTED

Men's shirts, pants, shoes, winter coats, all extra large size. [819] 821-2256.

Bed linens and blankets — single and double size. Kitchen linens, cooking gadgets, pots and pans, dishes, cutlery, small electric appliances, [819] 821-2256.

Pant suits, nurses uniforms, white or pastels, perma-press material. [819] 821-2256.

### PERSONAL

Want to lose weight? Canadian Calorie Counters — Tues 9:00 to 10:00 a.m.; Wed 6:30 to 7:30 p.m. CLSC, 8 Speid, Lennoxville. Info: [819] 562-8683, 823-4322.

### Hairdressers

*Goffure  
Lennox*

85 Oxford #102  
Lennoxville, QC  
(819) 565-0916

Open from  
Tuesday to Saturday

### TAKING CHARGE:

*A Guide  
to Living with  
Parkinsonism*

OFFERED FREE OF  
CHARGE TO  
PARKINSONIANS AND  
THEIR FAMILIES BY



The Parkinson  
Foundation  
of Canada  
Quebec Division

(514) 861-4422

# Townships Directory

Courtiers-conseils  
en assurances  
et protections  
financières

**DUNN  
PARIZEAU**

Division of: Dale-Parizeau L.M. inc.

300, rue Belvédère Nord, Bureau 201  
Sherbrooke (Quebec) J1H 4B1  
Tél. [819] 566-7233 Fax: [819] 566-8174

**Kouri, Rancourt & Pelchat**  
Avocates — Lawyers

239B Queen Street  
Lennoxville, QC [819] 564-0184

The Townships Sun

**The Townships Sun**  
Advertising Sales

Thelma Wright

Ramona Garrett  
(Richmond & area) [819] 566-7424

## EVENTS CALENDAR

April 1998

<p><b>See also Events on Page 4</b></p> <p>If you would like your organization's upcoming event included in this calendar, drop us a note before the 18th of the previous month.</p>	<p><b>'til Mar 29</b> Art Exhibit — Photography by Emmanuel Galland and Samuel Lambert. Arts Sutton, 7 Academy, Sutton. [514] 538-2563.</p>	<p><b>'til Mar 29</b> Art Exhibit — Works by Centre cooperatif l'Art vivant de l'Outaouais. Arts Sutton, 7 Academy, Sutton. [514] 538-2563.</p>	<p><b>'til Apr 14</b> Children's Book Exhibit — Bibliotheque Municipale Eva-Senecal, 450 Marquette, Sherbrooke Info: [819] 821-5860</p>
<p><b>'til Apr 19</b> Art Exhibit — <i>Patiner sur l'oeil</i>, photographs by Richard Purdy. Salle 1, galerie Horace 74 Albert, Sherbrooke. [819] 821-2326.</p>	<p><b>'til Apr 19</b> Art Exhibit — <i>Lieux insolites</i>, various mediums on drawing film by Louise Mercure. Salle 2, galerie Horace 74 Albert, Sherbrooke. [819] 821-2326.</p>	<p><b>'til May 3</b> Exhibit — "For the Love of Sports" origins of skating, hockey, skiing, snowboarding, baseball, lacrosse, curling, boxing and golf. Sports artifacts, and photos. Curtis Museum, 35 Dufferin, Stanstead. Info: [819] 876-7322.</p>	<p><b>'til May 10</b> Art Exhibition — Painting and sculpture by Jacques Barbeau. Sherbrooke, Musée des beaux-arts. Info: [819] 821-2115.</p>
<p><b>'til Jun 19</b> Exhibition — "Une ile celeste" coproduction of Musee du Seminaire de Sherbrooke et Planetarium de Montreal. 222 Frontenac, Sherbrooke. Info" [819] 564-3200.</p>	<p><b>Mar 26</b> Talk and Tea — Nancy Beattie, a Bishop's University history student, will give an illustrated presentation about her tour with the Canadian Battle of Normandy Foundation, at 2:30 p.m. at the Uplands Museum. 9 Speid street, Lennoxville. Info: [819] 564-0409.</p>	<p><b>Mar 27</b> Musical Friday — Isabelle Longpré (violin) and Guillermo Siméon at P'tit Bonheur in St-Camille. 8:30 p.m. Info: [819] 828-2664.</p>	<p><b>Mar 29</b> Maple Festival — Brunch, products, sugar-on-snow, art &amp; crafts, antiques, hay rides. 10:00 a.m. - 3:00 p.m. Stanbridge East. Info: [514] 248-3153.</p>
<p><b>April</b> <b>Dental Health Month</b></p>	<p><b>Apr 2 - 11</b> Drama - "A Chorus Line" presented by John Abbott College's Theatre Department. Shows at 8:00 p.m and matinees April 3 and 4 at 1:30 p.m. No shows Sunday or Monday. Casgrain Theatre, John Abbott College, Ste-Anne-de-Bellevue. [514] 457-6610 ext. 425.</p>	<p><b>Apr 4</b> Music — <i>A Century of Tang</i> performed by Ensemble Romulo Larrea. Centennial Theatre, Bishop's University, Lennoxville. Info: [819] 822-9692.</p>	<p><b>Apr 5</b> Sugar on Snow Party — As well as sugar on snow there will be doughnuts, pickles and beverages. \$5 for adults and \$3 for children 10 years and under includes a visit to the museum. 2:00 to 4:00 p.m. Uplands Museum, 9 Speid, Lennoxville.</p>
<p><b>Apr 5</b> Art Evaluation Day — paintings, carvings, furniture, jewels, rugs, and collectibles — books, photographs, postcards, toys. \$10.00 per object. Reservations required: [819] 821-2115. Musée des beaux-arts de Sherbrooke, 241 Dufferin.</p>	<p><b>Apr 5</b> Figure Skating Show — Lenn-Ascot Figure Skating Club's annual show. Bishop's University Arena, Lennoxville.</p>	<p><b>Apr 5 - 11</b> <b>National Wildlife Week</b></p>	<p><b>Apr 6</b> Meeting — Canadian Club of the Yamaska Valley. Guest speaker Iris Nowell — "Women who gave away millions". 2:00 p.m. \$5.00 fee non-members. Auberge West Brome, 128 Route 139, West Brome. Info: [514] 539-0713.</p>
<p><b>Apr 6</b> Blood Donor Clinic — 2:30 to 8:30 p.m., Green Ridge Baptist Church, 47 Queen, Lennoxville.</p>	<p><b>Apr 7, 8</b> Seminar — The Royal Institution of Naval Architects, in association with the Expert Witness Institute will hold an international seminar "Marine Experts &amp; The Legal Process" at Weir Lecture Hall, RINA, London SWI UK. Info: Dr. D. J. Doust, [819] 838-5049.</p>	<p><b>Apr 18</b> Church Supper — St Patrick's Mission Circle annual Buffet Salad Supper and Sale. 4:00 to 6:30 p.m. St Patrick's Church Hall. Corner King West and Gordon Streets. Info: [819] 562-2952.</p>	<p><b>Apr 19 - 26</b> Festival de Livre de Sherbrooke, Bibliotheque Municipale Eva-Senecal, 450 Marquette, Sherbrooke Info: [819] 821-5860</p>

**For you — about you — but we can't do it without you**

## National Wildlife Week April 5 to 11

### Shorelines

Remember the magical allure of shorelines? The marvel of a giant snapping turtle basking on a stream bank; the chatter of songbirds in a lakeside wood; the splash of smallmouth bass breaking the water's surface; the spectacle of bats at twilight alongside a peaceful river; or the discovery of sea stars, hermit crabs, and huge strands of kelp on a sandy ocean coast?

Shorelines are dynamic ecosystems. The edges of our lakes, wetlands, rivers, and estuaries (called riparian areas), as well as ocean shores, are critical to both terrestrial and aquatic species. Here, the building blocks of natural communities — sun, soil, water, air, plants, and animals — interact with each other in an intricate web of life.

Well-vegetated shorelines serve as buffer strips, protecting banks from erosion, safeguarding water quality, cooling streams, and providing some of the world's most productive wildlife habitat. Of course, these green zones also contribute beauty to the landscape.

We've taken these fragile ecosystems for granted — clear-cutting stream banks, building communities and industries in flood zones, paving over vast marshes, damming and diverting water-

ways, and growing crops and grazing cattle to the water's edge — all the while destroying untold hectares of wildlife habitat and depriving lakes, rivers, and sea coasts of their ability to cleanse themselves.

Today, we're becoming aware that shorelines are sensitive areas with tremendous



value, that they need special care. Fortunately, most shoreline degradation can be reversed.

### What You Can Do to Protect Shorelines

Learn more about shoreline habitats and the problems facing them. Participate in a shoreline cleanup. Maintain and enhance natural shorelines as much as possible so they will continue to support wildlife. Create a vegetation buffer — a strip of moisture-loving trees, shrubs, and herbaceous plants — along a shoreline. Maintain a variety of plant communities in a se-

ries of patches, blocks, or fence-rows along the shoreline to provide wildlife corridors. Don't remove twigs, leaves, rock rubble, and weeds.

Use alternatives to chemical fertilizers and pesticides. Try attracting toads! Just one of these modest amphibians can eat 1,500 earwigs in a

summer. Dispose of motor oil, paints, and household chemicals at a recycling centre. Promote conservation and pollution control.

### School Awards

In recognition of their extraordinary efforts to improve wildlife habitat, schools and classes across Canada receive National Wildlife Week Awards. In 1997 Ecole du Versant, Larouch, Quebec won an Honourable Mention.

Canadian Wildlife Federation, 2740 Queensview Drive, Ottawa, Ontario, K2B 1A2; 1-800-563-WILD

## The Choice is Yours — a Nice Lawn or a Healthy Lake

by Paul Cherry

A local environment group is asking people who live by lakes in the Eastern Townships to consider what is more important to them, a beautiful lawn or a healthy lake.

Lawn care is just part of a problem the group RAPPEL — a collection of lake protection associations — found while conducting a study on twenty-two lakes in the region this past summer.

Biologists found high levels of phosphate in seventeen of the lakes studied. Group director Martin Lemmens said a big part of the problem is that people have stripped plant life away from the land that borders the lake. Almost all of the lakes studied are surrounded by dwellings, farms and woodlots. Lemmens said the studies have shown there is too much sediment containing phosphate that can empty into the lakes. This happens when rain drains through lawns, farms and even the drainage ditches the transport ministry digs next to some roads. The sediments decompose at the bottom of the lakes, killing plant life and reducing the level of oxygen in the water. Lemmens said although phosphate is a natural fertilizer, large doses of it can destroy plant life. RAPPEL president, Jean-Claude Thibault, has asked its thirty-seven member groups to act quickly to inform lakeside inhabitants how to reduce the level of phosphate making it into the water. "Our objective is to reduce the levels by forty per cent in five or six years," he said.

**Big Contributors**  
The group estimates a piece of land by the lake that has been stripped of its vegetation will contribute to the phosphate problem six times more than one which has been left intact. Through its membership, RAPPEL will ask lakeside dwellers to grow plants where their land borders the lake. They will also ask that fertilizing lawns be stopped immediately. Wood lot owners and farmers will be

asked to use different draining methods. Only twenty-three per cent of the lakes studied in the Townships contained moderate levels of phosphate, while the remaining lakes scored higher levels. In Vermont, where similar studies have been done since 1979, the percentages are the opposite sixty-five per cent of the lakes studied there have a moderate level of phosphate. The remaining lakes showed higher levels. The standard set by the Department of the Environment states that a ratio of 20 micrograms of phosphate per litre of water is enough to cause serious problems in a lake.

Trois Lacs had the highest of those studied with 44.5 micrograms per litre of water. Three other lakes — Magog, À la Truite and Saint Georges — were found to have more than 25 micrograms per litre. The lowest level was found at Lake Simoneau, which had 7.3 micrograms per litre, considered a moderate level.

Mario Pellerin, mayor of Trois Lacs, said his council will participate in RAPPEL's recommendations because the lake is very important to the area. In addition, he said clean lakes in the province are becoming a rarity.

### \$300 Price Tag

Pellerin said it will cost his municipality more than \$300 for RAPPEL's services and recommendations, but he thinks it's a bargain that he plans to recommend to other mayors.

"That's not a lot of money compared to what it would cost if we don't inform ourselves about the health of our lakes," he said.

Thibault said for the average \$300 price tag, municipalities will get \$900, worth of labor because most of RAPPEL's staff works on a volunteer basis.

The results of RAPPEL's study was submitted to a symposium on the nature of Quebec's water. The symposium, which was held in Montreal was criticized by environmental groups — RAPPEL included — for its high participation fees. Groups and individuals that wanted to attend the conference were asked to pay \$300. Thibault said the price was out of his group's budget, adding, "if we went we would have had to sleep with the itinerants to stay the whole three days."

Used by permission of The Sherbrooke Record and the author.

home by staff members to "the flagship of the P.A.P.R.T."

How good it felt to be aboard once more with our dependable crew on deck!



## Lucky Thirteen

by Margaret Stevenson

As icy cables of heavily-coated power lines reached out over the Eastern Townships country-side the weight of their unaccustomed load caused supporting poles and pylons to collapse and fall in tangled masses on the ground, many among fallen tree branches. Thus the "ice storm of the century" had far-reaching effects on the trees as well as the animal and human population.

At the Robinson Residence in Cowansville, where thirteen people live in luxury, the big pine trees were spared a load of ice. However, icy conditions prevailed at our nearest power station where towers collapsed. Suddenly at 10:00 p.m. on January 7th all was in darkness!

Fortunately, the generator at the Robinson Residence kicked in and produced a limited amount of power. A search in the dark resulted in finding flashlights, candles and oil lamps to help the residents find their way to places of necessity.

By the time daylight came on January 8th the R.R. staff began evacuation of occupants of the Green Wing to "le grand salon" in the main building where the oil furnace and lights could be run sparingly by the generator.

After three days it became evident that the generator might fail and our matron, Mrs. Kopf, announced that a move to Manoir Lac Brome in Knowlton was planned to take place for us immediately after breakfast on Monday, January 12th. By this time two of our residents had found heated shelter with friends in Cowansville while two others had come to the Robinson Residence as refugees from their cold and dark homes. Consequently there were thirteen lucky people to benefit from traditional Canadian caring and sharing during difficult and stressful times, as we moved to luxurious lodging in Knowlton.

With remarkable efficiency and speed our R.R. staff labelled our bedding and cloth-

ing and packed it ready for transportation to Manoir Lac Brome in Knowlton.

Following a fifteen minute drive, we were there with our own R.R. staff members, who promptly assigned us to our rooms, where we found our beds made up and familiar friends to assist us in our strange surroundings.

With the combined and cooperative staff members from both places, a good lunch was efficiently served in the spacious dining room. We were then at liberty to meet regular Manoir residents and have afternoon tea later by the fire place. Among the friendly residents was Tippy, the resident dog, who gave us each a friendly look and an approving wag of her tail.

During our week as refugees at the Manor, Mrs. Kopf kept in touch with our Residence in Cowansville where staff members, police and neighbours were keeping watch. On Monday morning, January 19th, all thirteen lucky ladies were escorted