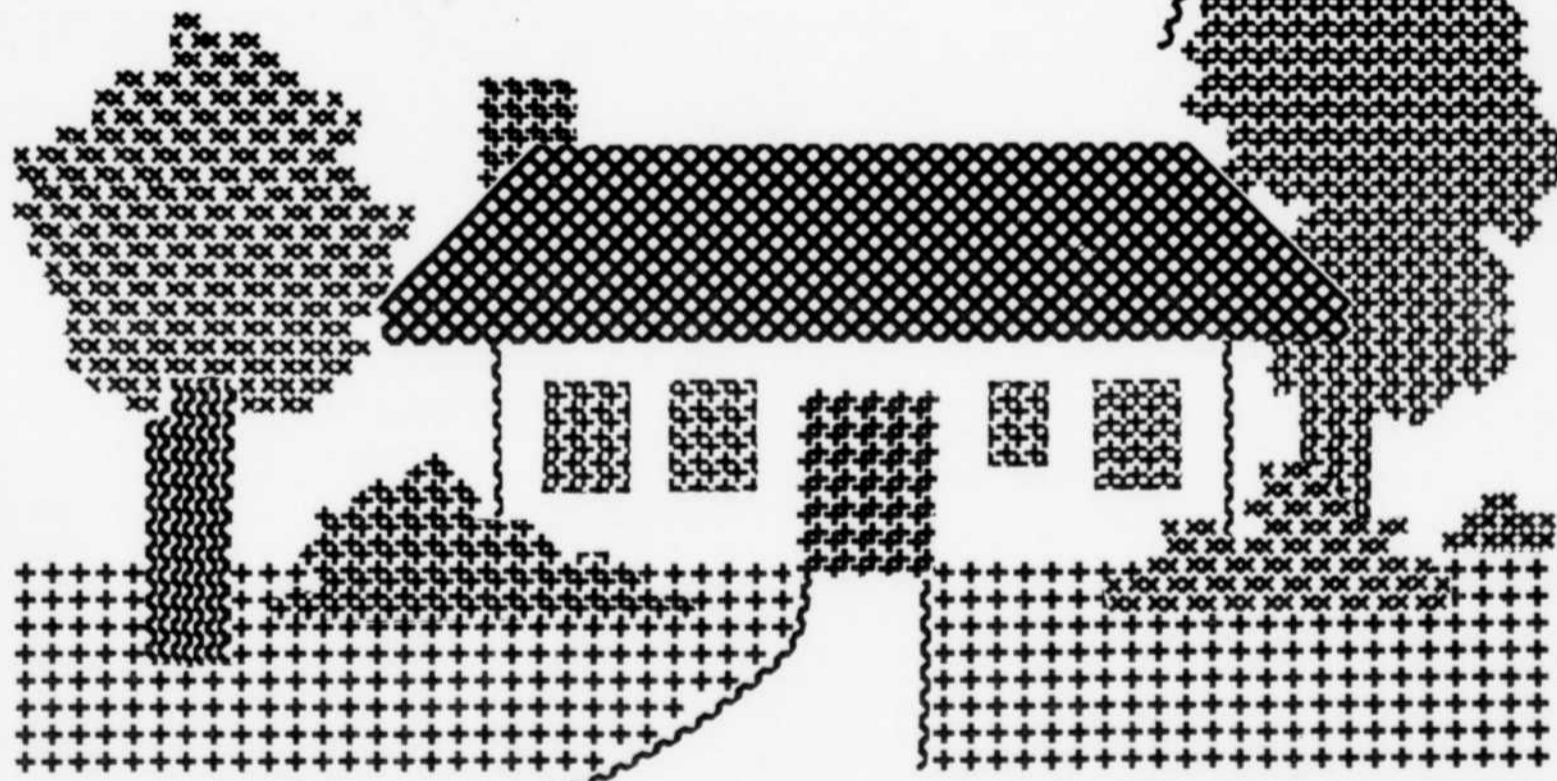


FALL
HOME

PROGRAM

HOME SWEET HOME...

the place where we renovate,
redecorate, repair, refurbish, reflect,
and...relax!



Sight and sound 'out of sight' this year!

What's the news? — newest sensations!

By DAVID LACHENBRUCH
Editorial Director, *Television Digest* with
Consumer Electronics and contributor to *TV Guide*

The newest sensations in sight and sound for 1977 are now being premiered by dealers throughout the area.

These are the new advanced-design models of television, stereo, radio, tape products, video systems, two-way communications, calculators and electronic watches. Products of advanced electronics companies throughout the world, they represent a technological step forward, with new features, higher performance levels and improved reliability.

What's new in sight and sound? Quite a bit.

Focusing in on television

In color television, there are new tubes for sharper, brighter pictures, and new circuits which automatically adjust colors to get them right and keep them right.

Black-and-white TV provides portable entertainment, in or out of the home, with new advances in battery operation.



David Lachenbruch

The newest sensation, Citizen's Band Radio, or CB, is now available in new forms, including automobile units with built-in AM-FM radios and home base-station transceivers with sophisticated automatic channel dialing.

Probably the best news of all for would-be CB'ers is the widespread availability and choice of equipment, with the end of the shortage which has plagued CB since its sudden surge of popularity.

Stereo components this year also present the widest choice in history. You can custom-design your own system to suit your

taste and budget from a large variety of receivers, turntables, speaker systems, tape decks and accessories, or choose pre-selected matched component systems.

Most brands have improved the fidelity of their equipment still further for 1977 with the introduction of new solid-state components.

Compact stereo systems provide an alternative to components, usually at a lower cost, and some "compacts" are now indistinguishable in reproduction quality from good component systems.

For those who prefer their music in fine-furniture cabinetry, the new consoles are distinguished by greater use of wood and more authentic details.

Radio trends

In radio, there's an increasing trend toward special-purpose receivers — weather service, short wave, police and public service, even portable radios which pick up CB communication or TV sound.

Many of the new clock radios have all-electronic clock sections without moving parts, and computer-style numbers for spelling out the time.

Tape recorders have

been upgraded with new noise-reduction circuits and more convenience features, such as automatic shut-off and "indexing" of the tape for rapid access to a required selection.

The combination portable recorder and radio has reached a peak of popularity, with many new versions on the market.

Two of the newest sight-and-sound products are blazing trails into the American home: the electronic video game which attaches to the TV set for hours of family recreation, and the videocassette recorder which lets you tape your favorite shows for permanent reference or for viewing at a later time.

The electronic calculator has evolved from a curiosity to a necessity in just four short years, and for 1977 the values are greater than ever, as worldwide mass production and competition shave prices to just a fraction of their cost as recently as a year ago. New and specialized models are designed for almost every type of calculation.

The most recent personal electronic product is the electronic digital watch, which just one year ago was a super-priced luxury but now competes with mechanical watches at almost all price levels.

These are the members of the sight and sound family for 1977. More detailed articles will be found elsewhere in this section. They all add up to completely new sensations in sight and sound!



AND NOW THE ATTACHMENT
The "FILTER QUEEN
Sanitary" System
With A

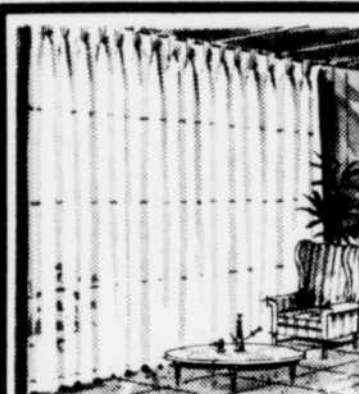
MOTO-ROTATIVE BRUSH CARPET SWEEPER

Your present Filter Queen as well as all types of vacuums can be modified to utilize this attachment.
Sales — Service — Repairs

Filter
Queen
Distributor

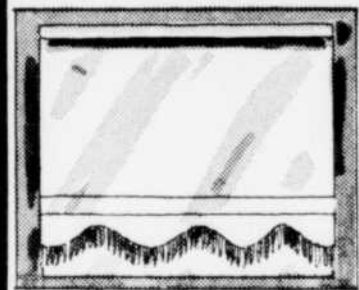
VACUUM CENTER
875 King St. W. — 569-4808

Hoover
Distributor



Fall Specials On
Custom Made Draperies
And Hardware

All types of Carpeting
and Colours



Window Shades
Custom Cut To Fit
any size



Lennoxville Building Supplies Ltd.

Tel. 567-4874 — 147 Queen St.
Lennoxville

MATERIAUX DE CONSTRUCTION LETOURNEAU INC.

SPECIAL!!
First Quality Pre-Finished
Paneling (4 ft. x 8 ft.)
\$4.49 to \$8.50

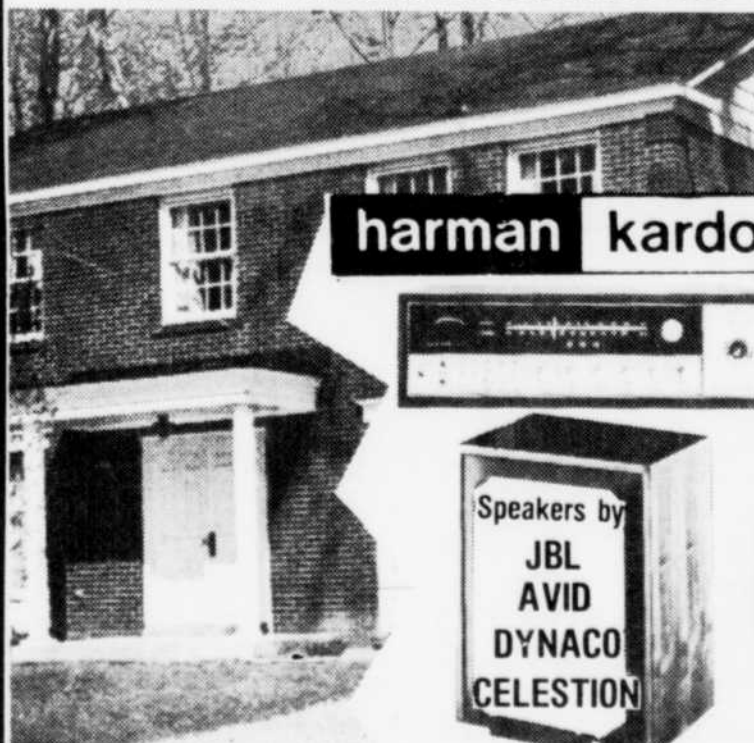
Also: SICO Paints,
Hardware
Etc.



R.R. 2, Lennoxville, Qué.
(on Route 143)
Tel.: 819-567-9613

LUXMAN — TEAC — SUPERSCOPE — RABCO — PICKERING —
RODEC — KAIRONICE — KOSS

"MUSIC" ADDS WARMTH TO YOUR HOME...



harman kardon

Speakers by
JBL
AVID
DYNACO
CELESTION

ENJOY WINTER
LIVING

"Good sound quality
comes from fine
quality components"

ELAC



VIDEOTECH Inc.
910 KING W.

See the Experts
SOUND ROOM
2nd FLOOR

SENNHEISER — SUPERTEX — DECCA — J.A. MITCHELL — WHITE CEC
MICRO — LECSON — VA-O-REC

Strong modern look marries rustic wood

A totally new concept of combining heavy wood turnings with chrome collars and glass has been introduced as an important leisure living group from Chromcraft Furniture.

Chromcraft's designer, Bob Wilson, states, "we combined the strong modern message by using chrome and glass with the popular return to naturals trend of solid oak or natural wood looks and created the Centurian Collection."

"By marrying the two design concepts, it's a new, fresh, rustic modern look."

The upholstered pieces also carry out this feeling of an unpretentious homey environment in a series of fabrics in keeping with this theme.

There's a handsome wide cotton corduroy; soft and appealing urethane vinyls — including Royale

— with a unique softness of hand spun backing for additional softness, and a rich top grain leather look.

There are also two new Herculon styles in handcrafted-looking designs such as an Indian-motif and subtle stripes. All fabrics are in Mother Earth's favorite colorations.

The entire collection consists of the following pieces:

- Dining table with uniquely designed double leg pedestal or bold 3-inch hardwood turnings, chrome collar and tubing.

- Coordinated dining chairs are available with open arm or with rolled upholstered arm. Both versions again combine the wood turnings, chrome and natural-looking upholstery.

- Five occasional tables in various dimensions are available in a rectangular or round glass, or rustic

elm laminate.

- A party group is offered with a lower 48-inch round top in a practical rustic elm laminate and similar styled chairs.

- The upholstered lounge group consists of sofa, loveseat and chair with a decided sling styling. The wood turning is again accented with chrome collars and a selection of soft urethane coated vinyls, updated wide cotton corduroys, and handcrafted-styled Herculon olefins.

There's the same tufted back and arms in wrap-over design.

- The new bar unit incorporates the Centurian styling with glass top and rustic elm laminated cabinet. Backless stools on casters can double as extra seating and the square cushions are covered in matching fabrics.

- Functional shelving units in the attractive rustic elm laminate include etagere cabinet with

storage doors and glass shelves, and a serving unit with spacious storage area.

Electric Heat
THE CLEAN HEAT THAT CAN'T BE BEAT

JEAN MARIE DUPUIS LTEE.

Electrical Contractor

Would like to thank their clientele for their encouragement.

For fast & efficient service

R.R. 2, BROMPTONVILLE — 846-2211

WE RENT ALMOST EVERYTHING

for HOME — CONSTRUCTION & INDUSTRY
RENTALS — SALES — SERVICE



FLOOR SANDER



FLOOR EDGER



VACUUM

CHRISTMAS SPECIAL

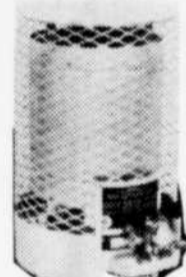
Model 015L
Reg. 167.00



SPECIAL

\$145.

- CARPET STEAM CLEANER
- CONCRETE MIXERS
- SPACE HEATERS
- PROPANE HEATERS
- CHAIN SAWS (Gas & Electric)
- CHAIN BLOCKS
- GENERATORS
- HYDRAULIC JACKS
- ALUMINUM LADDERS
- MORTAR MIXERS
- WATER PUMPS (Gas-Electric)
- ELECTRIC TOOLS
- CHAIRS & TABLES
- CEMENT TROWELS
- AIR COMPRESSORS
- BRUSH CUTTERS (Hand or Motorized)
- ELECTRIC BREAKERS
- SAFETY CAGES
- SCAFFOLDINGS
- SWING STAGE



PROPANE HEATER



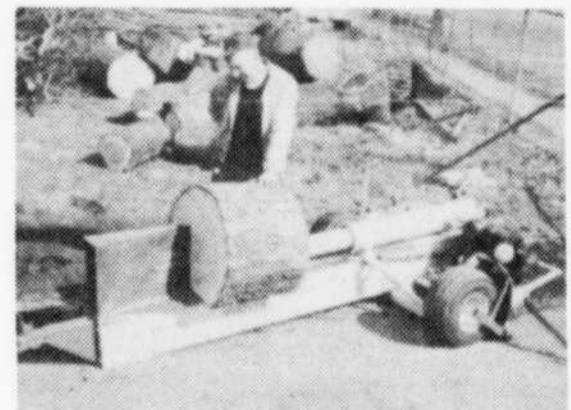
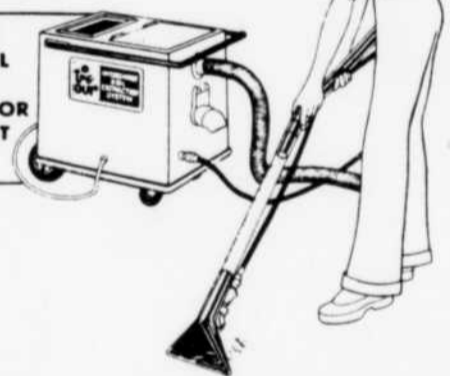
ASPHALT & COMPACTION ROLLER



DO IT YOURSELF! CLEAN YOUR CARPETS... THE PROFESSIONAL WAY.

Rent the fantastic new Up & Out Hydro-Mist Machine for superior carpet cleaning. Loosens and removes dirt, previous shampoo residue, and up to 90% of the moisture in just one step. Lightweight machine and pop-up handle makes this Model 625 so easy to operate. Save money... get results just like a professional!

AVAILABLE FOR RENTAL
4 HOUR —
8 HOUR — OR
OVERNIGHT
BASIS

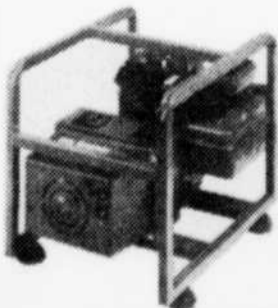


SPLIT LOGS WITHOUT EFFORT

RENT AT A LOW PRICE
A HYDRAULIC LOG SPLITTER

FREE DEMONSTRATION
UPON REQUEST

GOING WITHOUT POWER FREQUENTLY? BUY or RENT a AG TRONIC GENERATOR



Model 281
Gas or Diesel
1750 to 15,000 watts

- HOUSEHOLDERS**
- Don't worry about your deep freezer
 - Don't worry about frozen pipes
 - Forget your heating problems

- FARMERS:**
- Don't worry about losing milk
 - Don't worry about having to hand-milk
- Get Yourself a
AG-TRONIC GENERATOR



Model 9P1
Tractor PTO
9,000 to 27,000 watts

RENTAL CENTER FABRI INC.
906 KING ST. WEST
SHERBROOKE, Que. — Tel.: 569-9641

New synthetic fibers can use the help of good ol' bleach!

Anyone doing the laundry soon learns that permanent press and easy-care fabrics containing polyester stubbornly hold oily soil and need added cleaning power to avoid soil buildup.

Detergents alone can't always cope, especially where cleaning power has been reduced by the use of lower or non-phosphate detergents and where cooler wash water temperatures are used.

Old solution

Many people are rediscovering that old-fashioned liquid chlorine bleach, a product that has been around for over half a century, can put cleaning punch back into their wash water.

Recognizing this, Maytag recently extended its automatic bleach dispenser system to all but one model in its line and made other product changes to keep step with changing laundry requirements.

The stubborn soil problem is widespread because nearly 80 percent of today's wardrobe is made up

of permanent press and easy-care fabrics. Many of the garments contain polyester fibers and these man-made fibers have a strong affinity with oily stains. Since most of the colored fibers in these garments are stable, nearly all can be safely bleached with liquid chlorine bleach.

An important exception is cotton sleepwear that has been made flame retardant. These should not be bleached as bleaching reduces the effectiveness of the chemical finish. But sleepwear made of synthetic fibers such as mod-acrylic have a natural flame retardancy that is unaffected by chlorine bleach.

Careful!

When using bleach, the emphasis should be on safe use of this product. While an inexpensive and extremely effective cleaning agent, undiluted bleach in direct contact with natural fibers can deteriorate them and remove colors.

Maytag has conveniently located its bleach dispenser

to make it easy to pour a measured amount into the dispenser. The liquid drains to the bottom of the outer tub where it is automatically diluted as the washer fills with water. Clothes are held safely away from the bleach until it is diluted to proper strength.

Another additive that can improve laundering results but needs to be used properly to avoid staining garments is liquid fabric softener. This product eliminates static cling of synthetic fibers and softens natural fibers. Maytag has a fabric softener dispenser on all washers in its line.

Soft and safe

A measured amount of softener is poured into the dispenser at the beginning of the wash cycle and is automatically dispensed during the final rinse—safely and effectively.

A cold water rinse was added on all Maytag washers as an energy conservation feature. When it comes to properly handling the variety of garments in the family wash, there is a need for hot,

warm and cold wash water.

The best temperature for a particular load depends on the degree of soil and the kind of fabric. But when it comes to rinsing these loads, laboratory tests have shown that a cold-water rinse is as

effective as a warm one because rinsing is basically a dilution process. And selecting a cold rinse instead of warm can save eight or nine gallons of water, stacking up quite a savings on the fuel bill over a period of time.



We're not exactly Magicians. But we do have some little tricks to get your dry cleaning really clean!

ROMEO DRY CLEANING

1404 Galt W. — Sherbrooke

Our Specialty:
SUEDE & LEATHER
(Kirk's Suede Life)
Call: 562-4707

This is also the time to have your Winter clothes cleaned. Snowmobile suits — Ski jackets — etc.



NEARLY 80 PERCENT of today's wardrobe is made up of permanent press and easy-care fabrics. Recognizing that liquid chlorine bleach can aid in removing the stubborn oily stains that have an affinity with this type of garment, Maytag recently extended its automatic bleach dispensing system to more models in its washer line. The company also boosted its dryer capacity and gained the ability to dry a load of clothes faster using no more energy than before.

V.A. Beaulieu & Freres Ltd.

Visit Our Large Selection of La-Z-Boys



Also our fine selection of Bedroom & Kitchen Furniture & Appliances

2 Floors of Merchandise
241 King St. W. — 569-6309

Co-Proprietors: J. Claude Thibault & Jean Madore

AUTUMN SALE

Save On These Tremendous

SPECIALS

CEILING TILES 10,000 sq. ft. in stock 12" x 12" plain 17¢ sq. ft.	PANELLING 15 Designs to choose from 4' x 8' Oyster Shell NOW \$5.49 sheet
PLANTING SOIL 3½ lbs. Now 59¢	VITA GROW Fertilizer 2½ oz. \$1.98
TANNERY Spray On Leather & Vinyl Cleaner Now 7 oz. \$1.49	POPLAR SHEETING 4' x 4' Now Only \$1.75 Sheet

CENTRE DE

RENOVATION ROULEAU INC.

45 Craig St. — Cookshire — Tel.: 875-3333

Use caution when selecting contractor

Homeowners contemplating home improvement projects are urged to exercise caution in selecting a contractor. The National Home Improvement Council recommends the following rules:

1. Employ a contractor with an established place of business.
2. Be sure he has adequate financial references.
3. Get references from

him of satisfied customers for whom he has done remodeling work.

If you have a Better Business Bureau in your city, check to see if there is an adverse file on him. Otherwise, check him out with the local Chamber of Commerce.

4. Observe carefully how precisely he "sizes up" the proposed project, take note of his suggestions

and discuss them thoroughly with him.

5. Be sure, as regards major projects, to have written agreement on plans and specifications.

6. Have a thorough understanding as to quality of materials required.

7. Don't "shop" with him on prices of materials.

8. Get at least three bids from three contractors.

9. Ask him if he is a member of the National Home Improvement Council, the professional trade association of home improvement contractors.

Contractors belonging to the National Home Improvement Council subscribe to its Code of Ethics which upholds truth in advertising, strict adherence to contractual obligations and high performance standards.

The causes and cure of condensation in homes

The causes of condensation are invisible. Its progress is insidious. But the damage it can do to a home is very real. Because condensation can deteriorate — even destroy — just about every material a home is built of.

Excessive condensation can ruin paint and wallpaper, crumble plaster, spoil furnishings, and even cause entire walls to be covered with mold and mildew.

Inside a structure, condensation can cause wood to rot, masonry to spall, and metal to corrode. But all these problems don't have to happen. Condensation can be stopped.

Condensation is simply moisture — the same kind that sometimes collects in the corners of your windowpanes. People tend to blame their windows for condensation, but that's unfair to the windows.

Condensation, simply stated, comes from water vapor, or humidity — one of the invisible components of air. When airborne water vapor reaches a surface that's cool enough, the vapor condenses and becomes water. That's why pipes sweat, why windows get steamy, why walls become damp.

The first way to stop condensation is to attack its source: the water vapor in the air. Water vapor comes from a dozen different sources, from human bodies to cat and dog bodies to cooking, bathing,

and laundering.

If a homeowner has a condensation problem, the first thing to do is to check moisture sources. If moisture can be controlled at its source (or better yet, vented out of the house, as a clothes dryer vent does), the problem may be over.

Ventilation is very important in keeping moisture from building up inside a house. It may be as easy as opening a window a little, or it may take a mechanical or power ventilator. Most are easy to install as long as the homeowner is sure of the right size, which he can probably find out from the manufacturer or the dealer.

Stopping window condensation can be as easy as warming up the windows. A homeowner can add storm windows, which will keep the inside glass warmer. Or replace old, worn-out windows with made-to-fit new windows.

The best kind are "thermalized," which means that they're insulated throughout, through the frames, the sash, and the double glass. In just about every case, thermalized windows will stop condensation even if the outside temperature goes down to -30°.

Free fact sheets and brochures on condensation may be obtained at no obligation from Season-all Industries, Inc., Indiana, Pa. 15701.

SOMETHING NEW

Aluminum Industrial Steel Hangars

Tel.: 567-4527

We manufacture to your needs
Seamless Aluminum
Eavestroughs — (white enamel)

Free Estimates



Rodrigue Tremblay, Pres.



Rodrigue Tremblay Sherbrooke Inc.

General Contractor Sales & Installation

1 — Aluminum Products

2 — Industrial Steel Covering

Rep. C. Boulanger — Tel.: 567-9634

We are also Proprietors of:

Les Remises Sherbrooke Enrg.

Builders of all types of Hangars
2540 Roy St. — Sherbrooke, Que.

VISIT
OUR

SHOWROOM

Exclusive, quality fireplace accessories



ALSO
selection of
**FRANKLIN
STOVES**

Fireplace screens made
to measure

LE 
BLOC VIBRE INC

1080 Panneton St. — SHERBROOKE —
Tel. 569-2432

FREEZE WINTER OUT WITH

Electric HEAT

SPECIAL!
On Thermostats &
**CHROMALOX Baseboard
Heaters**

(until November 15th)

CHAREST ELECTRIC LTEE.
9 Wellington St. — Tel: 849-2706
COATICOOK



FOR THE SOPHISTICATED AUDIOPHILE, there is a wide range of components available, all made with the latest electronic advancements for the very best in listening.

Newcomer to components? A few words of timely advice!

The consumer on a budget in search of a quality hi-fi system should for the most part stay clear of catalog and discount houses. These outlets emphasizing price are not equipped to service the product. Once the check has been received and the equipment shipped off to the buyer, he's on his own.

Most reputable audio equipment dealers have the expertise to impartially counsel consumers.

The newcomer to the complex world of sophisticated audio equipment, therefore, would be better advised to pay a few dollars and go to a well established dealer for advice, acquisition and service of the product. In the final analysis, the satisfaction and peace of mind gained will be well worth the few extra dollars spent.

One choice is four-channel sound, still something of a step-child in the audio equipment industry. About five years ago this revolutionary concept was presented to potential consumers as the sound concept to enhance music

appreciation and quite possibly to make conventional stereo obsolete.

This brave new hope is still to be fully realized. Four-channel sound is still very much alive, though not kicking with as great enthusiasm as originally.

The growth of quadraphonic has been hampered by initial technological blunders, dealer misrepresentations, the incredibly high cost of early systems, the problem of finding space in small apartments for four speakers, and the initial incompatibility of four-channel systems with existing stereo records.

Only recently, after the incompatibility of components could no longer be ignored, have manufacturers decided to incorporate all existing concepts into single systems.

Quadraphonic sound was also hurt by low-end equipment manufacturers who flooded the market with inferior products. Their plan to thus stimulate growth of the four-channel concept backfired when much of the equipment malfunctioned and further soured the dubious

consumer.

Still, despite the setbacks, millions of dollars have been poured into the research and development of four-channel sound, and too much has been committed to abandon the technology at this stage.

For the most part the four-channel equipment available on the market today is an excellent value with reasonably good systems available for around \$500 complete with speakers.

marantz.

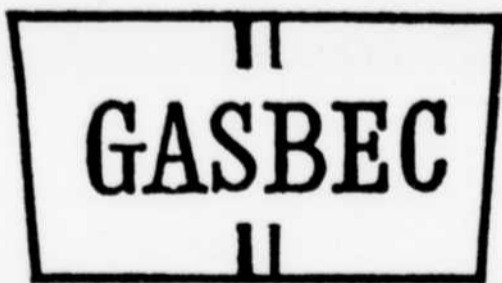
Real low frequencies of 30Hz at this price is incredible. Magazine tests have proved that the Smaller Advent speaker can take a continuous load of 100 watts! With a quality receiver like the Marantz 2220B, you get a minimum 20 watts RMS per channel, from 20Hz to 20kHz, with no more than 0.5% total harmonic distortion. With the Phase-Lock-Loop FM Multiplex Demodulator, we have an FM receiver that's ahead of its competition. You can choose the Dual 1225, an automatic of good quality. But, we've given you the chance to opt for the Acoustic Research XB-91 manual turntable. In conclusion, it's when we listen to this system that we're surprised at the price.



\$749.00

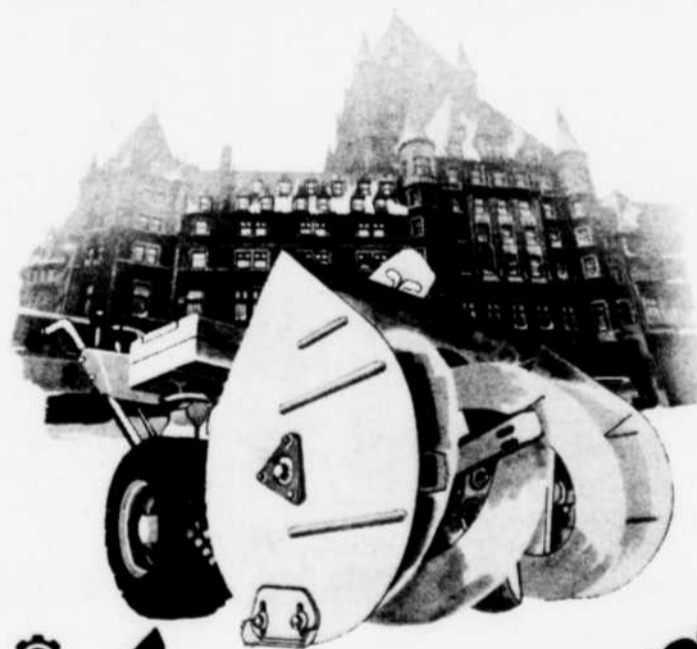
BOURGET STEREO CABINET INC.

155 King East, Sherbrooke
569-4242



**PROPANE GAS
BOTTLED or BULK**

DOMESTIC—COMMERCIAL—INDUSTRIAL
2580 King W.—Sherbrooke—569-5117
also branches throughout Quebec



Ariens the snow buster

Some of the reasons why Ariens snow blowers have become the favorite of so many throughout Quebec:
Wide choice of horsepower: 4, 5, 6, 7 or 8.
Two phase snow throwing system.
The powerful Ariens Tecumseh engine, proven for years in the harshest Quebec winters.
Depending on model, 4 or 5 forward speeds, plus neutral and reverse, control differential, clears 20" to 32" path.
One-to-ten ratio of pinion and gear makes for high sugar efficiency.
Discharge chute pivots 240 degrees.
Optional: Ariens Trac-Team attachments make your Sno-This a year-round investment: rotary lawn mower, rotary brush.

LAST YEAR TOTAL SNOWFALL IN THE PROVINCE OF QUEBEC AMOUNTED TO 388 CM.

FREE

For a limited time only. With the purchase of your Ariens-THRO ELECTRIC STARTER, suggested retail price of \$114.00.

L. TANGUAY & FILS INC.

SHERBROOKE
419 Papineau
567-8474

ROCK FOREST
Bourque Blvd.
569-8404

LAMBTON
Frontenac County
(418) 486-2466

Fresher and purer water for everyone!

City waterworks strive to make the water we drink safe and palatable, but reports indicate they may be having trouble meeting these goals. A Gallup Poll shows there is widespread discontent with the way water tastes and with its appearance. In addition, scientific evidence is mounting that water from both public and private sources may sometimes be hazardous to health.

What is the consumer to do?

One of the best answers appears to be a new three-way drinking water system that substantially removes most of water's worrisome substances. Developed by Culligan, it produces water of outstanding quality.

Reverse osmosis

It is a system in which "reverse osmosis," or R.O., is a key element. Pioneered for home use by the

Culligan people, R.O. units employ a filmlike membrane that rejects dissolved salts and minerals, organic contaminants, and also removes even the smallest particles by ultra-filtration.

Culligan has teamed R.O. with protective cellulose pre-filtration and activated carbon adsorption, to control tastes and odors, as well as residual organic impurities. No treatment method, using one or even two ordinary filters, can be as effective as this new three-way system.

Latest in the Culligan family of drinking water systems are the Aqua-Clear Consoles. These new appliances are housed in an attractively-designed compact cabinet, 43" high, occupying only a square foot of floor space.

Designed to help solve the problem of undesirable or potentially dangerous impurities found in some

municipal and private water supplies, Aqua-Clear Systems remove sediment, asbestos particles, tastes, odors, brackish water mineral salts, nitrates, laxative sulfates; as well as unhealthy dissolved metals such as arsenic, barium, cadmium, lead, mercury and sodium; and organic contaminants such as detergents, insecticides and pesticides.

The Aqua-Clear Drinking Water Consoles not only remove impurities, but are available in mod-

els that improve the usefulness of water for drinking and cooking. One model offers the availability of refreshingly-chilled water for drinking, combined with piping-hot water for instant coffee, tea, soups, and other foods.

Other models offer room-temperature water only, or chilled and room-temperature water.

Ideal for homes, business, or industry, they are easy to connect and will provide up to 150 gallons of high-quality drinking

water a month, and can be equipped to provide double this amount.

Economical

Operating costs are minimal, allowing the liberal use of high-quality water in drinking, cooking, and food preparation — the making of coffee, tea, baby's formula, reconstituting frozen fruit juices, dry milk, etc. Ice cubes benefit, as do even the family pets.



NEW THREE-WAY Aqua-Clear appliances by Culligan control most undesirable water impurities and produce sparkling-clean, chlorine-free, good-tasting drinking water, either chilled, hot, or room temperature.

FREE

24 HOUR OIL BURNER SERVICE

FOR COMPLETE INFORMATION ON OUR 5 POINT PLAN

Please Call

CHAMBERLAND & LORTIE SERVICE LTD.

567-6717

BECKWITH BEMIS Ltd. MILL STORE

Corner of Galt West & Belanger

"ATTENTION ALL"
"DO IT-YOURSELFERS"

Easy Parking at the Door.
SPECIAL FACTORY PRICES

NOW'S the time to re-upholster your Den or your Playroom furniture or improve the appearance of your bar, with "OUR" Leatherette Vinyl 1975 fabrics. Our Newest and Finest 1975 colors and Patterns have just been put up for sale this week.

VINYL COATED FABRIC 54"

Reg. \$4.00

NOW ONLY **\$3.00** Per yd.

THIS OFFER IS GOOD ONLY FOR 10 DAYS

Nov. 8th, '76 TO Nov. 12th, '76 incl.

Come in and look around

Len Gaudreau will be pleased to help you with your needs and material measurements. Cut to your specifications.

OPEN

1145 BELANGER ST.

(corner of Galt St W)

Monday to Friday
8 A.M. — 12:00
1:00 P.M. — 5:00

567-5281

gc

GASTON CÔTÉ INC.

Lumber and Building Supplies

**NOW'S THE TIME TO PREPARE
YOUR HOUSE FOR WINTER
VISIT OUR STORE**

VISIT OUR STORE

**Everything under
one roof—
For Construction
and Renovation**

**1000 GALT E.
SHERBROOKE,
QUE.
TEL.
(819) 569-9841**

New electric staple gun for easy fix-up



YOUR WINTER FUEL BILL will be smaller if you put up insulation now during the fall. Easy-to-handle blanket insulation and a new *electric* staple gun make the job simple for any do-it-yourselfer, and it saves money, too.

Fall is a perfect time for do-it-yourself projects and for readying your house for the winter ahead. Especially when that home fix-up project means extra money in your pocket all winter long.

One sure and easy way to lower the winter fuel bill is to install energy-saving insulation in the attic, basement or other area that has uninsulated ceilings, floors or walls.

With convenient blanket insulation and the help of a new *electric* staple gun, installing insulation has never been easier.

The unique staple gun makes short work of insulation because it operates

with a simple push of the button.

To install wall insulation:

First, measure and select blanket insulation that is wide enough to fit snugly between the wall studs. Unroll and press the insulation into place between the studs, making sure there are no gaps.

The vapor barrier must be facing the room side of the wall. Then, using $\frac{3}{8}$ " to $\frac{1}{2}$ " staples, tack the insulation to the sides of the wall studs at intervals of about eight inches.

While the Duo-Fast people designed the electric staple gun with enough power to satisfy the heavy-

duty needs of the man-around-the-house, its light weight (2½ lbs.) and easy handling make it the perfect tool for the handy-woman as well.

Covering a drab wall with fabric, giving windows a new decorative treatment, or reupholstering furniture are all easy and economical ways to liven up the home for winter.

Staple-gun upholstery, for example, is much easier and faster than the traditional hammer-and-tack method, and it can be used to attach replacement webbing, a dustcover — or anything else where the tack is not exposed.

To reupholster furniture:

Follow the same steps you normally would. But instead of hammering in tacks, simply position the electric staple-gun nose where you need a tack, and press the button. Pres-

to! You've got fasteners that will probably hold better, are easier to remove, and take only a fraction of the time of conventional hammer tacking.

ONE RATE AND ONE RATE ONLY	DAY & NIGHT TEL: 569-9667
MAINTENANCE and REPAIR SERVICE INC.	
*Plumbing	*Oil Burners
*Heating	
336 Ball St. — Sherbrooke, P. Que.	

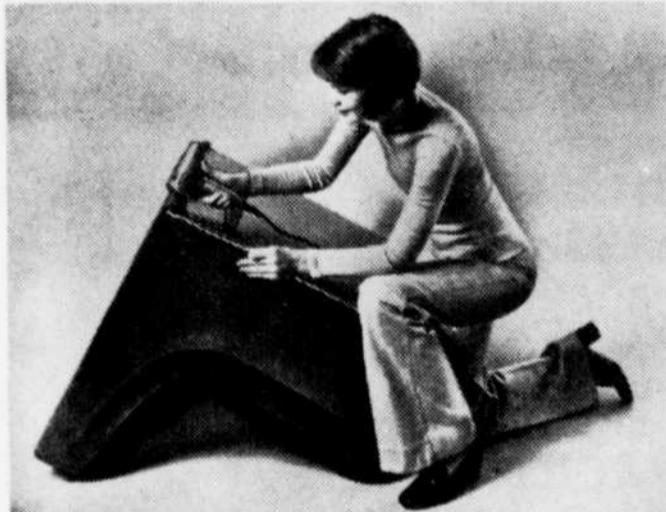
PROTECT & BEAUTIFY YOUR HOME WITH

Free 5 Year Service Guarantee
20 Years on Materials

ALUMINUM OR VINYL SIDING

- STORM WINDOWS and DOORS
- SLIDING WINDOWS, SOFFIT FASCIA & EAVESTROUGHS
- SHUTTERS & AWNINGS

LENNOXVILLE RENOVATION
81 BAKER ST. — LENNOXVILLE, QUE.
TEL.: 569-1259



REUPHOLSTERING IS A FAST, easy and inexpensive way to liven up your home's decor this fall. A new *electric* staple gun makes it easy for any do-it-yourselfer to get professional results. This lightweight tool can be used to attach replacement webbing, a dustcover — or anything else where the tack is not exposed.

For Your Floor Covering Needs It's

MAGASIN DE PRELART COUTURE

118 Wellington St. S.
Tel. 569-1105
Sherbrooke

OPEN ALL YEAR

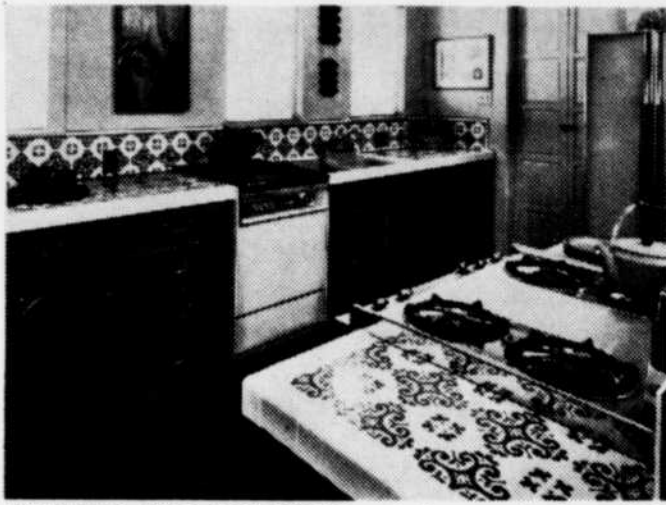
Picture yourself as the gracious hostess in this lovely rustic setting! Whether you're having guests or an intimate meal for two, you will be thrilled by the compliments you will receive. These logs furniture groups are made of carefully selected, beautifully grained white cedar. Finishes are hand rubbed and every detail shows the skill and pride of Canadian finest furniture craftsman. Best of all they are priced for commonsense budgets.

REGULAR BUSINESS HOURS

Rustic Furniture (DEAUVILLE) Inc.

FOR INFORMATION CALL TEL: 864-4321

Durable ceramic tile lends bright new spark to kitchen



CERAMIC TILE COUNTERS and floors make beautiful sense in kitchens. They add a distinct note of luxury, they're the easiest of all surfaces to keep clean and never need waxing, they'll last for forever, and not even the hottest pots or vigorous chopping can mar those tile counters.

The look of obsolescence comes to the kitchen faster than to any other room in the house.

Appliances look outdated in just a few years, and there's no other area that needs repainting and a general overhaul quite as frequently.

But there's ONE material that never grows obsolete: ceramic tile! So if you're about to remodel

your kitchen, it makes sense to think tile.

Put it in as many places as possible. For every area that's tiled is one less surface to worry about through all future overhauls and remodeling jobs. That's a lot of dollars saved!

"For ceramic tile can stand up to incredible abuse," says the Tile Coun-

cil of America.

"A tile floor won't show distinct paths from stove to refrigerator to sink. And chopping onions or parking hot pots right on a tiled counter is perfectly OK."

Also think tile for the walls . . . at the very least for those behind the stove and the sink.

And what a lot of paint jobs you could save if you put tile on the walls of that center work aisle. Not to mention the breakfast bar!

Ceramic tile will save energy, too. Namely yours. Once-over with a damp mop or sponge will keep those tile surfaces spanking clean. No waxing needed either. Not ever.

And now that you're convinced that it's time to tile, you'll be pleased to find that great fashion has come to this classic product.

Gone is tile's square image . . . Literally! Today's ceramic tiles come in a fabulous range of shapes and sizes.

Secondly there's color . . . bright poster primaries as well as quiet earth tones and pretty pastels.

Even tried and true

quarry tile now comes in such colors as caramel and black walnut.

Then there's design. Such as floor tiles with the looks of flashed bark, pebbles, shells, tide-rippled sand, used brick, cobble stones, parquet and wicker. And wall tiles handsomely decorated in the

tradition of Delft and Lisbon or with up-to-date nature motifs, such as cane or bamboo.

So whatever your kitchen decor — city-slick or countryfied, serene or zesty, stream-lined or funky — you'll have no problem finding the right tile to amplify its mood.

'Do-it-yourself' home insulation saves money

The best year-round air conditioner has no motor and doesn't fit in the window. And, rather than increasing electric bills, it usually reduces costs significantly.

It's fiber glass insulation, designed to reduce heat transfer and keep air temperature at the proper level.

A fully insulated home can require up to half as much fuel as one with no insulation.

Most of the homes that do have insulation fall short of the minimum standard necessary to meet today's energy crunch.

Knowing where and how to insulate is easy with some expert advice from the Johns-Manville Insulation Center.

Set up exclusively as a free service to answer any simple or complex question about insulation from engineers to consumers, the Insulation Center has vast, sophisticated resources from which to supply the latest information.

For the homeowner who feels he or she knows little about insulation, the Center's staff will give advice or send literature with simple instructions for a "do-it-yourself" insulation job.

Installation of home insulation is easier than many people think.

DON'T BE SHOCKED

Never turn an appliance on or off, or change fuses, with wet hands or while standing on a wet floor.

A REAL WORKHORSE



Columbia

Make snow fun with a Columbia Snowthrower.

SPECIAL NOVEMBER SPECIAL

8 H.P. or 10 H.P. models
26" or 33" buckets available
Chains & Electric Starter Included

DON'S REPAIR SERVICE

41-11th Ave. South — 562-5378
SHERBROOKE

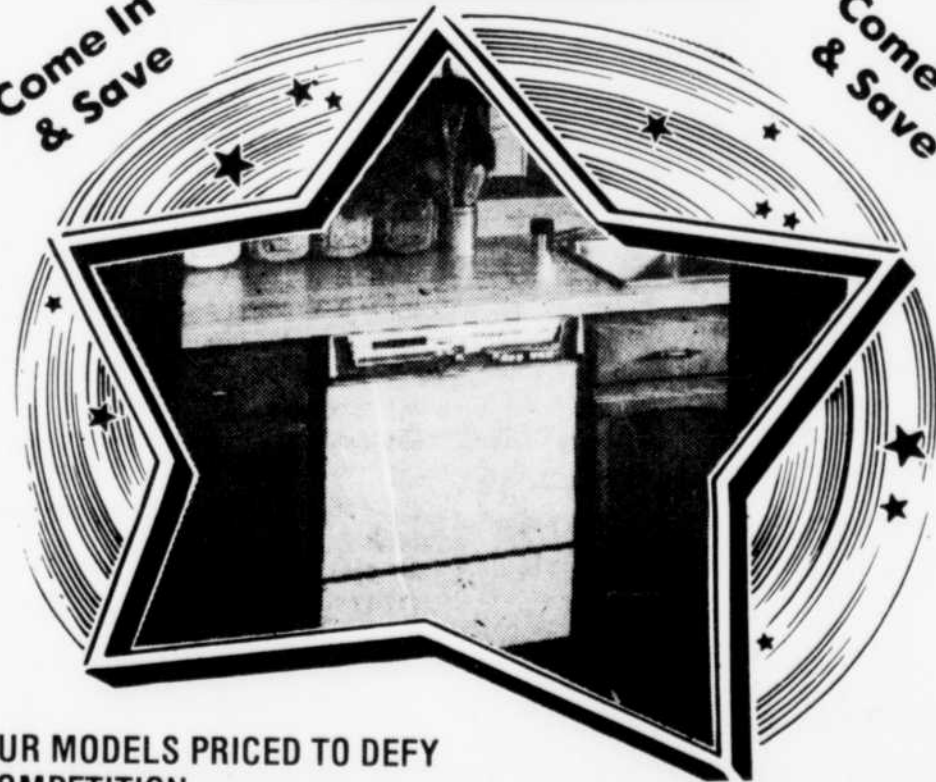
Last Chance
To Take Advantage
Of Our "SURPRISE SALE"

Including
Dish Washers

KitchenAid

Come In
& Save

Come In
& Save



ALL OUR MODELS PRICED TO DEFY
ALL COMPETITION

DISCOUNT HOUSE
RAYMOND BERGERON LTEE.

280 Marquette St. — 562-3853 — Sherbrooke — Lay Away Plan

new ideas in
Wallpaper

PANELLING — PAINTS

Specialty:

INTERIOR DECORATING

for better buys plus service

MATERIAUX ORFORD INC.

888 John St. — MAGOG — 843-5737

Fashion colors you and your bathroom love to live with!

Just because your bathroom color scheme may be pink today, doesn't mean you will want it pink tomorrow. Tastes change, you may want to change your color scheme. But one thing you can't afford to change every time you change colors is your bathroom fixtures.

White is boring

And so most people install white fixtures when building or remodeling. But this makes for a stark,

look-alike bathroom. That doesn't have to be the case.

You can now choose bathroom fixtures in color and still have decorating flexibility with the help of new Fashion Colors from Eljer Plumbingware, a leading fixture manufacturer.

Eljer worked with noted color consultant Ms. Beatrice West to develop a series of new fashion colors, designed to adapt to changes in bathroom de-

cor.

Ms. West conducted a study on bathroom colors and found the color trend away from harsh, bold colors to softer, more elegant hues. Colors like Misty Rose, Desert Gold, Twilight Blue, Natural, Frost Green and Denim Blue. Subtle and adaptable for a bathroom you can live with, and a bathroom that will stay in style.

That's because these new Fashion Colors let you have a change of heart without a change of fixtures. Simply splash on a fresh coat of paint, roll out a new plush carpet, fluff up some flowered towels, and Fashion Colors adapt — whenever you're ready.

Tips from pros

But not everyone can be a professional decorator. So a new 32-page booklet available from Eljer, entitled "Eljer Fashions Your Bathroom With Color," illustrates six beautiful, believable bathrooms designed by the editors of House Beautiful Magazine, each featuring bathroom fixtures in one of Eljer's Fashion Colors.

Three color schemes for each bathroom are included to show the versatility of these new colors, in 18 different color schemes to inspire decorating ideas. Sources for papers, paints, carpet, tiles, cabinetry, towels and accessories are included to help you design and complete your bathroom from top to bottom.



FOR AN ULTRA-STYLISH DECOR, Denim Blue fixtures are matched with the fine feel and look of tapestry — in wallpaper. Beige and copper colored accents with warm honey toned tile for the shower, counter top and floor add to the richness of the cool Denim Blue. Fixtures by Eljer Plumbingware.



DENIM BLUE COMBINED WITH WHITE makes for a very different, bright, lustrous bath. Denim Blue fixtures combine with cobalt ceramic tile and tailored blue and white stripes on the walls. A splash of chocolate brown in towels and accessories and this glamour bathroom is complete. Fixtures by Eljer Plumbingware.

**Don't Spend the Winter Worrying
Ready Your Home NOW**

Don't take a chance on running out of OIL
Let us install ELECTRIC HEATING for you

BEAUDRY ELECTRIQUE LTEE.

Specialist

920 Jacques Cartier N. — Sherbrooke

Dial: 567-7005

**Now's THE TIME TO GET THOSE
WINTER CLOTHES &
"SNOWMOBILE" SUITS READY
FOR THE ONCOMING WINTER MONTHS.
BE PREPARED... DON'T WAIT...
Call Now... 562-2633.**



**CLEANING. WE'RE
THE PROFESSIONALS.**

**FOR Pick-up
& DELIVERY**

562-2633

OR DROP THEM INTO

**BUANDERIE
SHERBROOKE
LAUNDRY**



GOOD APPEARANCE PAYS
BELLE APPARENCE PROFITE

INC.

353 Frontenac St. Sherbrooke

WHOLESALE

BEST QUALITY

BEST SERVICE

BEST PRICES



Tel: 563-8484

DISTRIBUTOR

*WALL TO WALL
CARPETING
TILES & LINOLEUM
DECORATIVE
RUGS*

FREE ESTIMATES

Installation Fully Guaranteed By Our Experts

**LARGEST FLOOR COVERING CENTER WITHIN
100 MILE RADIUS**

We Bring You The RICHEST & LARGEST Choice
Of COLORS & PATTERNS On One Floor
PLUS A

Special Remnant Department In Our Basement

COMPARE BEFORE BUYING

YOU'LL SAVE... SAVE... SAVE

CHARGEX

For Your Shopping

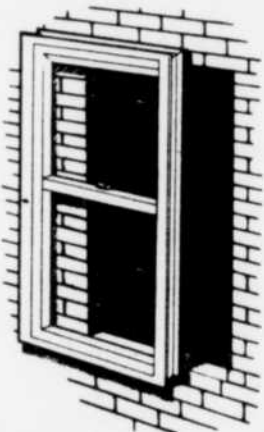
Convenience



Only economical way to get rid of old window problems—ditch the windows!

The only economical way to get rid of old window problems is to get rid of old windows. And replace them with tight, double-glazed, maintenance-free new windows.

Today, replacing old windows is a lot more convenient and more economical than ever before.



TODAY, THE MADE-TO-FIT replacement window is the only economical way to get rid of old window problems. Because they are custom made to the exact dimensions of the window opening, they fit perfectly. No structural alterations, no mess.

That's all because of a remarkable development in window design: the made-to-fit replacement window.

Time was when replacing old windows meant a big, time-consuming, expensive job. The old windows had to be torn out, and the mess had to be cleaned up. Then the homeowner or window contractor had to try to make the new windows fit those old openings.

Finding new windows that matched the exact size was almost always a major problem. Window openings and old windows come in an almost infinite variety of different sizes.

But the local lumberyard or building supplier can carry only a limited number of "standard" sizes of windows. More often than not, the "standard" size wouldn't quite fit, and the window opening had to be altered to make it fit.

But today, there's the made-to-fit replacement window. Custom measured and custom manufactured to the exact dimensions of a window opening, a made-to-fit window has to fit. Perfectly.

It installs quickly and easily, often in a half hour

Stepladders: stepping up safely

You can't climb very high on a stepladder, but you can still get hurt if you don't follow these stepladder safety rules:

- Always open the ladder wide enough so that the spreader locks itself in the open position.
- Never stand on top of a stepladder; use a ladder tall enough to let you stand at least two steps from its top.
- Always make sure that the feet are on a firm, level foundation.
- Never lean a stepladder against a wall and use it as a straight ladder.
- Don't overreach.

or less, from the inside of a home. Only the movable sash and three small strips of wood need be removed from the old window frame.

And there's absolutely no need for structural alteration. No bricking in, no carpentry, no plastering, no repainting, no re-decorating.

Made-to-fit windows can be built to literally hundreds of thousands of different sizes, and dozens of different styles. Once they're installed, they start saving money for a homeowner.

They practically eliminate air infiltration; that saves a lot of energy. If they're double glazed, they'll save even more energy. Insulating glass saves half of the energy that would be lost by conduction directly through single glass.

And new made-to-fit aluminum windows save a lot of maintenance expense and trouble. In fact, the only maintenance they may ever need is cleaning, and that can be done from the inside.

Old windows waste energy and cost a lot of time, trouble, and upkeep. The only economical answer to old window problems is the made-to-fit aluminum replacement window.

We would be pleased to serve you!

Anatole Bergeron

Linoleum and Carpets — Sales and Installation
Carpet Cleaning Service in your home

228 St. Patrice East — MAGOG — Tel. 843-4636



ITALY TILE



TERRAZZO AND CERAMICS INC.

— tiles for kitchen, bathroom, basement
— 200 styles to choose from

DISTRIBUTOR FOR MF PAINTS

SPECIAL!!

MF. Semi-Gloss Alkyd Paint

MF. Semi-Gloss Latex

Reg. \$10.90 gal. **SPEC. \$7.89 gal.**

MF Latex Primer-Sealer

Reg. \$8.25 gal. **SPEC. \$5.99 gal.**

Full line of paints, interior & exterior, brushes, rollers, etc.

1126 King E. — Sherbrooke — 569-8865

DO IT YOURSELF

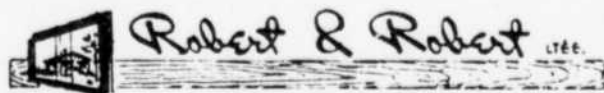
"STEAM" Clean Your Carpets... The Professional Way.

Rent the fantastic new Up & Out Hydro-Mist Machine for superior carpet cleaning. Loosens and removes dirt, previous shampoo residue, and up to 90% of the moisture in just one step.



L.B.S.

147 Queen St.,
Lennoxville
Tel.: 567-4874



MANUFACTURERS OF DOORS
AND PANORAMIC WINDOWS

ST. FRANCOIS-XAVIER DE BROMPTON

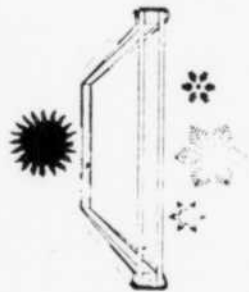
Tel. WINDSOR:

845-2731

CANADIAN PITTSBURGH INDUSTRIES

SHERBROOKE BRANCH

TWINDOW®



Tired of foggy windows, chilly drafts and high heating bills? Install Twindow, double glazed windows with built-in insulation. Twindow keeps your home warmer in winter and cooler in summer.

10 year Guarantee.

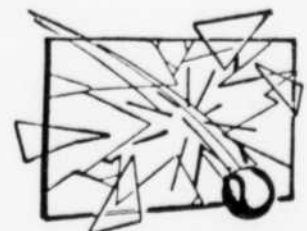
THESE TWINDOWS ARE MANUFACTURED AT OUR MONTREAL FACTORY

...MAXIMUM DELIVERY "10 DAYS"

WINDOW GLASS

Replace broken glass for doors or windows at

YOUR GLASS
REPLACEMENT
CENTER



FOR FURTHER INFORMATION:

CANADIAN PITTSBURGH

INDUSTRIES

1581 DENAULT

TEL: 567-4846

Homeowners urged to select only energy-saving devices

The homeowner in the market for a new refrigerator will discover some surprising innovations, particularly power-saving features and improved insulation, according to the National Home Improvement Council.

One energy-saving model uses about a third less electricity than other models not equipped with its special thermostatically controlled motor.

While it is true that the amount of electricity consumed by a refrigerator each operating hour is a modest amount, it's also true that it is operated 24 hours around the clock for 365 days a year.

Even though frost-free refrigerators do use more kilowatts of energy annually than non frost-free models, they avoid the extra energy drain resulting from frost accumulation.

Today's power-saving refrigerators also preserve food longer during power failures, which become alarmingly more common each year.

As is to be expected, there's a higher price tag on these models, but operating savings in the long run more than repay the initial purchase price.

The self-cleaning oven, certainly a time and labor

saver, uses minimal energy for a year's normal use. Presuming monthly cleaning, only 20 to 30 kilowatt hours of electricity are consumed yearly. Some gas ranges even clean while the oven is cooking.

With thermostats on cooking tops as well as in the ovens, total automatic cooking is possible today. A "keep warm" setting permits preparation of meals hours in advance, freeing host and hostess to entertain guests.

The lower temperature

settings on the keep-warm oven are safe even for the finest china.

Manufacturers of building materials and decorative accessories have responded beautifully to the imagination and needs of the remodeling homeowner, according to the National Home Improvement Council.

From self-adhesive vinyl instant door and wall covering to carpeting for every room in the home, the list of attractive and reasonably priced prod-

ucts for the home grows day by day.

A number of these products are designed for do-it-yourself installation.

For example, the colorful new lightweight plywood panels that will bring a livingroom to life.

They're extremely easy to install and come in solid colors, patterns and textures. What's more, one can paint, paste, pin or nail on them. And they are washable, scuff-proof and fade-proof.

On the exterior of the

house the homeowner remodeler might consider using a new self-adhesive vinyl siding which goes on right over wood siding, eliminating the need for painting.

A powerful adhesive assures permanent bonding and the vinyl resists staining and peeling.

Acoustical tile provides an attractive ceiling at the same time that it helps to trap sound. Keep in mind that it will only absorb sounds from inside the house.

Let cool air come right in through walls

Why swelter through another summer?

If you've been putting off whole house air conditioning for financial reasons, why not consider air conditioning only the parts of the house where you spend most of your time?

With built-in room air conditioning, you can have cooling comfort in your living room, family room, bedroom or kitchen — wherever you want it — without losing the benefit of a window you can open on those mild days when you need neither heating nor air conditioning.

You can get through-the-wall room air conditioners in a wide variety of capacities.

For instance, the General Electric Company offers 13 models which can be mounted through the wall, ranging from a 6,000-BTUH Thinline™ model for a small bedroom or den to a 24,000-BTUH Superthrust™ unit, capable of cooling several large, adjoining rooms.

Eight of these air conditioners are high-efficiency models.

And between air conditioning seasons is a good time to shop for an air conditioning bargain.

SHORT SUBJECT

When you disconnect a cord from a wall outlet, don't pull the cord — pull the plug.



NEW DOWNTOWN SHERBROOKE 

**njw
decor**

NATIONAL WALLPAPER & PAINTS LTD

156 Wellington St. N. 

**FURNITURE
LAMPS
KNICK KNACKS
DRAPES
RUGS
FLOOR COVERINGS**

- **RUGS**
- Harding, Burlington,
- Crossley, Bigelow
- Imported Carpets
- Installation Service

- FLOOR COVERINGS**
- Vinyl
- Armstrong, Amtico, GAF
- Installation Service

- ORIGINALS FOR GIFTS**
- Lamps
- Pictures
- Clocks
- Decorative Pieces

- FURNITURE**
- Imports
- Traditional Styles and Contemporary

- WALLPAPER**
- Vinyl, Birge
- Imports
- Unlimited Choice

- DRAPES**
- Made To Measure
- Decorator Service



Decoration Ideas

EXPERIENCED DECORATORS AT YOUR SERVICE

QUALITY PAINT

