



# Philemon Wright National Fluvial Museum

ISBN (digital version): 978-2-925005-16-2

ISBN (print version): 978-2-925005-17-9

Legal deposit, first quarter 2021.

Bibliothèque et Archives nationales du Québec (BAnQ).

## Under the initiative of Resonance Canada inc.

Photo credits: **Ministère des Forêts, de la Faune et des Parcs du Québec** / Saint-Modeste nursery MFFPQ (pp. 36, 44, 51) ; **Michel Huot** (pp. 38 à 40, 42, 43, 45, 46, 48 à 50, 53 left side) ; **Alexandre Pampalon** (pp. 41, 47, 52, 53 right side), and **The Workers' History Museum** (WHM) (pp. 6 à 35).



Special thanks to the WHM photographers:

**Madelaine Bachand** (p. 33),

**Andrea Cordonnier** (pp. 6, 18 e, 19, 30, 16 / 22 / 33 inset),

**Kim Elliot** (pp. 25, 26, 29),

**Paul Harrison** (pp. 12, 18 b/c, 22, 30 inset),

**Raymond Massé** (pp. 8, 10, 16, 18 a/d/f/k, 35),

**Caje Rodrigues** (pp. 11, 15, 31), **Bill Woodley** (pp. 9, 13, 18 h, 20, 21, 23, 31 inset, 32 left side).

Archive holdings : Resonance Canada inc - *Royal tour of the British colonies* collection, photograph 52, back cover.

Editing and graphic design: Resonance Canada inc.

Printing: Sure Copy

Printed in Gatineau



A publication of Resonance Canada inc, Publisher  
206, avenue du Grand-Calumet  
Gatineau (Québec) J9J 1L3, Canada.  
[info@redonance-canada.com](mailto:info@redonance-canada.com)

**PWNFM: Philemon Wright National Fluvial Museum**

© All rights reserved. Reproduction of this document, in whole or in part, by any process whatsoever, whether electronic or mechanical, and in particular by photocopy, microfilm and from the Internet, is prohibited without the written permission of the publisher.



# Museum Charter: a **Heritage** and **Biodiversity** Commitment

**Philemon Wright National Fluvial Museum**

CREE's publication axis



MUSÉE FLUVIAL MUSEUM  
PHILEMON WRIGHT

# FOREWORD

Prepared for the future Philemon Wright National Fluvial Museum (PWNFM), this Charter focuses on two main concerns:

- **the protection and enhancement of the exceptional site of the Chaudières Falls and the E.B. Eddy Industrial Complex, a rich heritage composed of archaeological resources (indigenous or colonial) as well as a pre-industrial and industrial complex heritage geosystem; and**
- **the restoration of white pine (*Pinus strobus*) as a focus for a biodiversity strategy.**

The PWNFM prefiguration cell, which has been validating the preparatory work for the arrival of the museum since 2007, is based on the 220-page introductory museological plan: <https://bit.ly/2Ehicjk>. As part of this effort, a Scientific Committee and Steering Committee have been formed to assume project monitoring, and to be the regular contacts for the Council

of Partners and the Sustainable Development Stakeholders' Forum.

The PWNFM is aware that additional resources are required to broaden and deepen the knowledge related to the *Wood Rush* (the extensive search for white pine in the 19<sup>th</sup> century analogous to the *Gold Rush* of 1848) while better defining the interconnection of the four pillars of sustainable development: social, economic, cultural and environmental. The regulatory formalization of the *Center of Research Engaged in Excellence* (CREE), linked to the Canadian university network, is an essential step in providing a framework for museum functions (collections, research and dissemination) and structural policies.

Throughout the process of developing the museum, A.B.C. Strategies and subsequently Resonance Canada Inc successively acted as the coordinating, managing and animating structure for the museum project, while promoting



the innovative partnerships essential for the establishment of this museum in the Ottawa Valley - the cradle of the wood products industry in North America.

For example, we identified the joint proposal for the E.B. Eddy, the 19<sup>th</sup> century industrial castle at the Chaudière Falls, for the Quebec government to initiate the requalification and aggregation of seven hectares where a dozen historic buildings are clustered as a national heritage site: <https://bit.ly/3dDBsqd>

The impressive array of initiatives underway shows how essential the museum's arrival is and how favourably it is viewed in the Quebec and Canadian landscape.

**This Charter is therefore a tool to promote the preeminent role of the new museum, the PWNRM, in supporting the protection, conservation and restoration of the targeted systems.**


Page

7

**HERITAGE**

36

**BIODIVERSITY**

A stone plaque is mounted on a rough-hewn stone wall. Above the plaque is a window with a wooden frame and six panes, each covered with a blue material. The plaque itself is rectangular and contains the following text:

THE  
E. B. EDDY CO.  
1892.

*E.B. Eddy Complex. Building #6, north side.*



Philemon Wright National Fluvial Museum



*E.B. Eddy Building #8, underground.*



E.B. Eddy Building #8, underground.

The Chaudières Falls Heritage Site and the E.B. Eddy Industrial Complex comprises an area of 69,461 square metres (approximately seven hectares) including the *water lots* (areas of land covered by water).

The site is an irregular polygon on the north shore of the Ottawa River bordering Philemon Island. It includes a dozen buildings as well as three hydroelectric stations.

Philemon Wright National Fluvial Museum



*E.B. Eddy Building #12, second floor.*



E.B. Eddy Building #12, second floor.

Located south of blvd. Alexandre-Taché and Laurier street, between Ruisseau de la Brasserie to the west and the Portage Bridge to the east in the city of Gatineau (Quebec), this estate contains remarkable legacies that bear witness to the originality and specificity of the stories that took place there and the groups that live within it, such as:

- Spiritual and meeting site of the First Nations.
- Traditional portage route.
- Interprovincial archipelago unifying Philemon, Chaudière, Victoria, Amélia and Albert islands.
- Colonial nucleus of the Founder of the Region, Philemon Wright.
- Cradle of the *Wood Rush* with the Raftsmen and Log Drivers.
- Legendary site of the exploits of Jos Montferrand, famous Ottawa Valley Raftsmen.
- Important archaeological relics: Indigenous, pre-industrial and industrial.
- E.B. Eddy Industrial Complex, industrial jewel
- Timeless space of innovation and modernity.
- Open Gateway of Quebec.
- Birthplace of Canadian industry.



E.B. Eddy Building #6, third floor.



*Passageway to E.B. Eddy Building #8.*

WHEREAS, as research has shown, the site of the Chaudières Falls is an area of high archaeological value.

WHEREAS the Chaudières Falls site has been a sacred place for Indigenous Peoples for more than 6,000 years.

WHEREAS the site of the Chaudières Falls is an archipelago that exhibits exceptional characteristics in terms of geology, hydrology, nature, sociohistory, regional identification and industry.

Philemon Wright National Fluvial Museum



*E.B. Eddy Buildings #3 and #5, ground floor.*



WHEREAS the E.B. Eddy site, an industrial jewel of the 19th century situated at the Chaudières Falls, Quebec, will have public access to enable the City of Gatineau to rediscover its distinctive, historical identity as well as conveying a sense of strong community identity.

WHEREAS the projected museum space will have the advantage of highlighting the interconnections between the various dimensions of this heritage, but will also have the effect of linking them with contemporary concerns.

WHEREAS the future Museum space will recognize in a concrete and unbroken way the contribution of the forest history to the evolution of our common, multidimensional heritage.



*E.B. Eddy Buildings #1 and #2B.*



*E.B. Eddy Buildings #12 and #13, second floor.*



*will be devoted to:*

- PROMOTING the maintenance of the natural spaces and architectural features of the Chaudières Falls site including those elements of cultural heritage specific to the Raftsmen era embracing its spiritual dimensions, such as being a source of collective identity, creativity and diversity.
- CONTRIBUTING to the sustainable development of the Chaudières Falls site by becoming a value-added partner.
- SUPPORTING the bearers of exceptional cultural knowledge to ensure its transmission and contribute to the recognition of the value of local knowledge and know-how on the ancestral transportation methods of floating of wood.



a

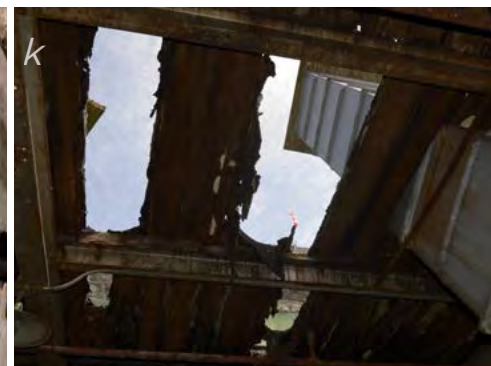
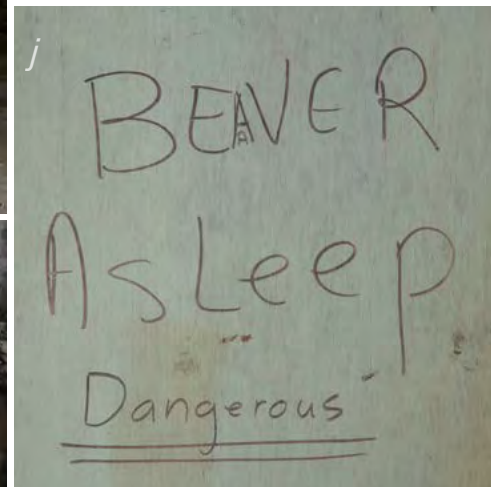


b

Identity Heritage.  
Consultation. Protection.



# VALUE-ADDED PLAN





- PRESERVING, CONSERVING AND HIGHLIGHTING the entryways, exitways and channels of the old timber slides. In 1976, the federal government recognized the historical significance of the Hull Timber Slide as a major technical innovation for Canada: <https://bit.ly/394fsVy>.
- PRESERVING, CONSERVING AND HIGHLIGHTING the E.B. Eddy Industrial Complex. To accomplish this, the proposed Montferrand Pavilion of the Museum could integrate the architectural space of Buildings nos. 1-2-3-6, which have already been inventoried.
- DEVELOPING AND MAINTAINING a network of people who will take action and intervene in identifying threats to the cultural legacy of the site, be it material or immaterial.

Philemon Wright National Fluvial Museum



*E.B. Eddy Building #2 seen from Building #3, ground floor.*





- ASSUMING the operations of the Museum are based on three components — building the collections, developing research and its dissemination — in a framework that will promote multidisciplinary approaches to build the future scientific programs of the exhibitions and, to encourage awareness of all what these represent.
- SAVING, PRESERVING AND HIGHLIGHTING a significant part of Canada's history and heritage of industrial practices.
- DEVELOPING the specialized work that would make this heritage and history more accessible to the public.

Philemon Wright National Fluvial Museum



*E.B. Eddy Building #6, ground floor.*



*E.B. Eddy Building #8, basement.*

- PROVIDING the Ottawa Valley with the necessary equipment to allow for the interpretation of the archaeological resources.
- COMMUNICATING the Museum's knowledge base and sharing its technical know-how.
- SHARING 200 years of heritage related to the raftsmen and the river drivers which will enrich the National narrative by superimposing other innovative points of view. This perspective will give a fresh look at those museum collections which are at this time, minimally or not at all accessible to the public. This will establish new links for Canadians to discover a new perspective of what they have always viewed as an ordinary "riverbank" or "river".



*The Ottawa River.*



*E.B. Eddy Building #6, third floor.*

- STRENGTHENING the image of the National Capital Region through the awareness of this underappreciated piece of valuable cultural heritage - that of Canada's industrial practices related to the transportation of wood by river. Reinforcing the idea that the Ottawa Valley is the birthplace of the forest industry in North America.
- INVITING people to get to know and “rub shoulders” with the tall pine trees to marvel at their beauty and to better understand the “balance of nature”, essential to the maintenance of human stability. We need to live in a more disciplined manner if we are to ensure that the Earth remains a liveable place.

Philemon Wright National Fluvial Museum



*E. B. Eddy Building #12, ground floor.*



*E.B. Eddy Building #3, second floor.*

Philemon Wright National Fluvial Museum



*View of the Devil's Hole at the Chaudières Falls in the heart of the E.B. Eddy Industrial Complex dating from the 19<sup>th</sup> century. Building #13, ground floor.*



*E.B. Eddy Building #13, second floor.*

Philemon Wright National Fluvial Museum



*E.B. Eddy Building #6, ground floor.*



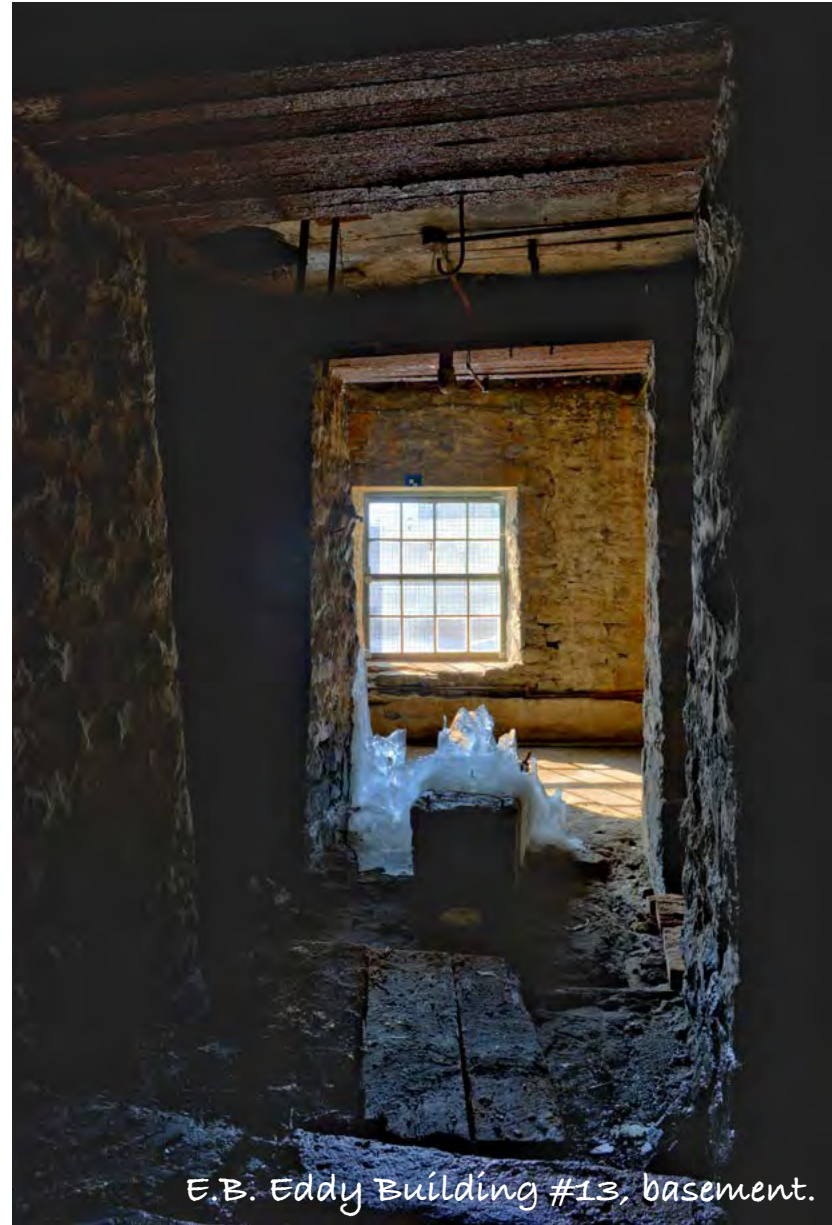
*E.B. Eddy Building #6, ceiling.*



Philemon Wright National Fluvial Museum



E.B. Eddy Building #6, second floor.



E.B. Eddy Building #13, basement.



*E.B. Eddy Building #1, ground floor.*

Philemon Wright National Fluvial Museum





*E.B. Eddy Building #12, third floor. Old industrial paper cutter.*



*White pine seedlings at the Saint-Modeste nursery, Saint-Modeste, QC.*





*Bed of cones and needles of white pine.*



WHEREAS the white pine that once dominated the landscapes of the Ottawa Valley and the Temiskaming areas of Quebec 19th century of eastern Canada are **now found in much reduced abundance**.

WHEREAS climate change is increasing the occurrence of droughts and severe storm events throughout the range of white pine and more particularly so in western Quebec.

WHEREAS traditional forest harvesting operations, forest fire protection and the proliferation of white-tailed deer have greatly affected the regeneration of eastern white pine stands by allowing for the succession of other species (particularly red maple and balsam fir) to change the composition of the white pine stands.





*Nice white pine stand.*



WHEREAS the challenges of regenerating white pine have often been highlighted in the scientific literature over the last 50 years.

WHEREAS current reforestation efforts have been met with mixed success, even within the pine-producing regions.

WHEREAS efforts to protect against the two major pests (white pine weevil and white pine blister rust) are essential for the conservation of white pine and its silviculture and that new threats to white pine have recently appeared.

WHEREAS the timber supply of quality white pine is increasingly difficult.



Philemon Wright National Fluvial Museum





WHEREAS the new Museum can help increase public awareness in support of sustainable white pine management.

WHEREAS this resource still has the potential to make a significant contribution to the economic development of rural areas of eastern Canada.

WHEREAS the knowledge acquired on this species and its management can apply to not only Quebec, but also to Ontario and parts of Atlantic Canada.

WHEREAS a long-term vision would allow for new schools of thought regarding the restoration of white pine.



Philemon Wright National Fluvial Museum





*will be  
devoted to:*

- DEVELOPING a renewal strategy for eastern white pine by advocating for innovative ways including: (1) promoting the use of appropriate silvicultural strategies including a greater use of the “seed tree retention” in white pine management and, (2) taking advantage of using hardwood stands of lower economic value as a nurse cover for white pine (facilitation attribute).
- CREATING a “White Pine Fund” to support the research and development of a new vision based on an ecosystem management approach applicable to white pine for the entire range of the species including Ontario, Quebec and the Atlantic provinces.



Philemon Wright National Fluvial Museum



*Oak and white pine seedlings often present on drier sites.*



- BRINGING TOGETHER partners interested in this common goal, with the help of the Center of Research Engaged in Excellence (CREE), to develop restoration and rehabilitation measures in ecological region 3a and 3b (sugar maple / yellow birch) through the collaborations with other research centers (ISFORT, CERFO, UQO, UQAT, DRF, NRCan) while encouraging discussions to prioritize regional actions, particularly in the Ottawa Valley.
- ACTING in a positive manner in each of the electoral ridings containing white pine by working on a schedule to reintroduce the species and to make better use of those remnant or existing white pine stands.



Philemon Wright National Fluvial Museum





- DEVELOPING silvicultural strategies that allow for the adaptation to global changes, i.e., rapid changes that recognize the current issue of the mature age classes of many of the stands and at the same time the lack of natural regeneration of white pine, which is often prevented by more tolerant, more abundant species that cut light on the now-rare white pine — it requires specific regeneration treatments or methods.
- REVIEWING the information and silvicultural expertise developed in various parts of Canada so that we can implement innovative advances in the preparation of planting microsites for white pine.



Philemon Wright National Fluvial Museum





- ADAPTING silviculture to mixed stands and developing an overview of the different conditions in which white pine is found in extensively managed areas.
- REDEFINE the areas to be harvested, as the current units represent too great a diversity of threats and make it impossible to prioritize the necessary interventions and also to clearly see the possibilities for restoring eastern white pine.







