

Printed in U.S.A.



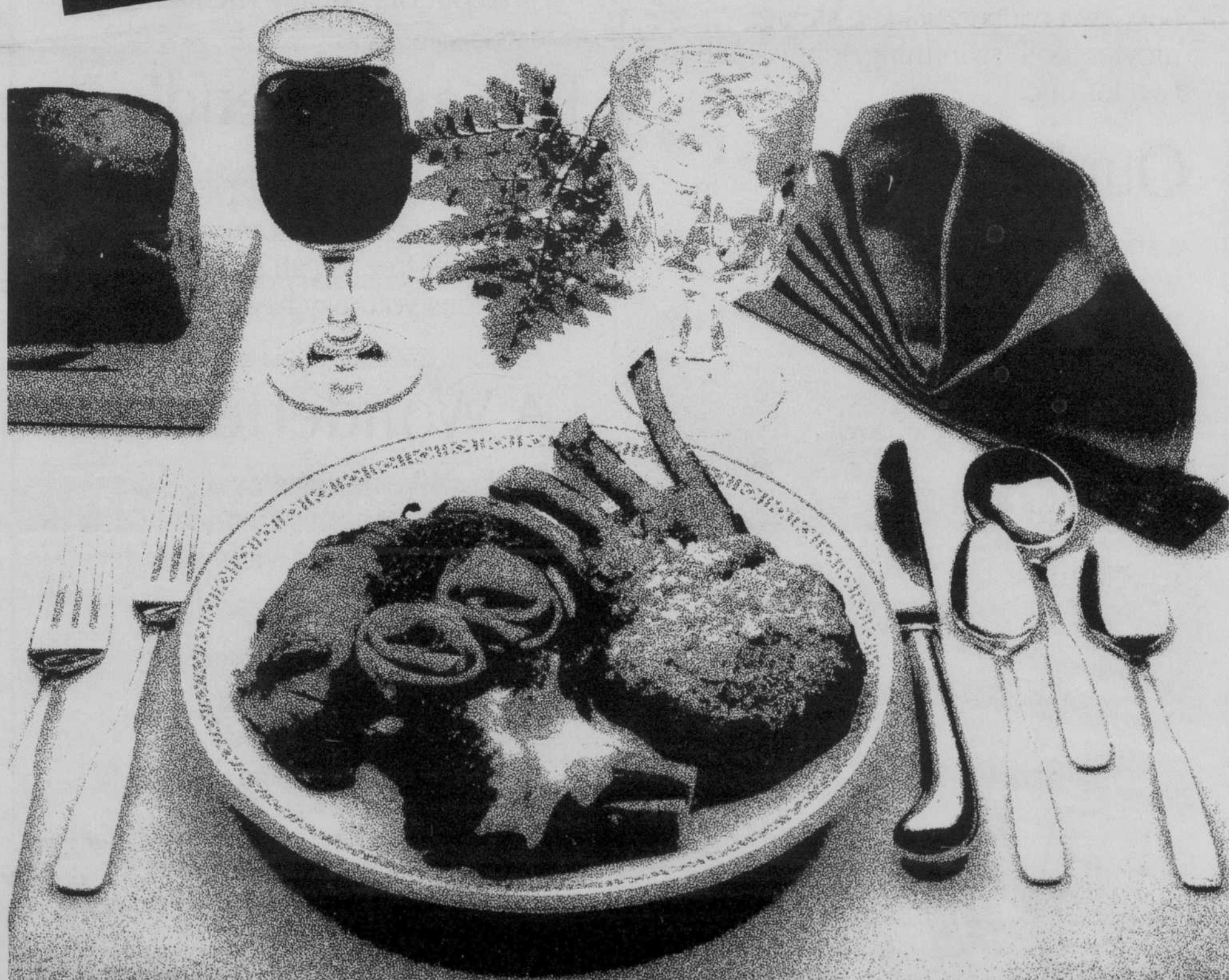
2 dinners for the price of 1!

Since 1981...

**"The Best Deal
in
Vermont!"**

With Vermont's Dividend Card, you can enjoy Vermont's finest Dining, Skiing, Lodging, Golf, Movies, Concerts, Plays, Sports, and Recreation,*

2 for the price of 1!



**Plus neighboring Quebec, New Hampshire, and Massachusetts!*

*Restaurants, Ski Areas,
Hotels, Inns, Resorts,
Golf Courses, Racquet
Clubs, Movie Theatres,
Concert Halls, Cruise
Boats, and more....*

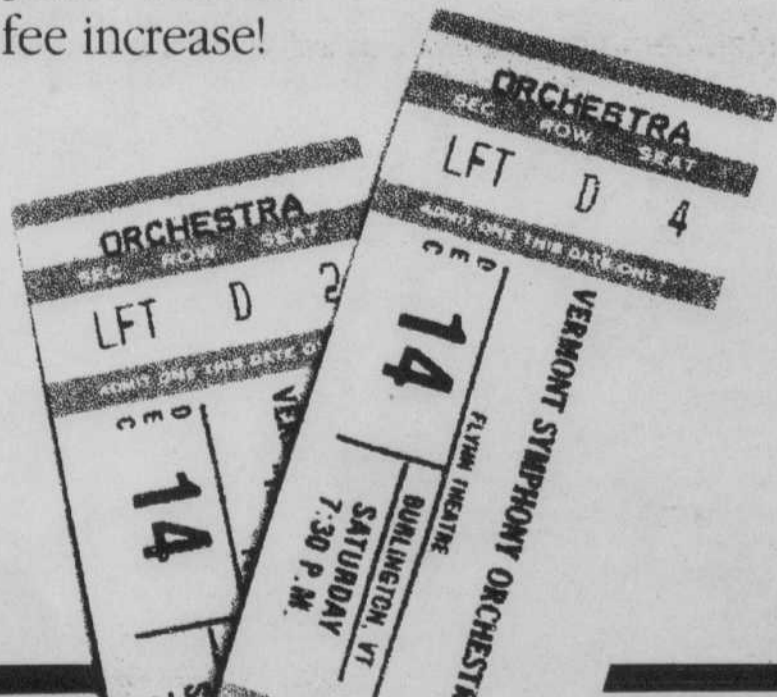
...All of these
Attractions Honor
Vermont's
Dividend Card!

You'll recoup your membership fee in one weekend...then save more, every week, all year!

Over and over, you can get two nights of lodging for the price of one...two concert tickets...skiing, movies, golf, swimming, tennis—all two-for-one! *

Our Fifth Year,

...and every year we grow, as old members renew, and new ones join us. This year, the value of membership is up at least 30%—with no fee increase!



Nearly \$5,000 in Available Benefits



Vermont's Dividend Card is good for well over \$2,000 in free dinner entrees...plus thousands more in 2-for-one lodging, entertainment, and more. It's *easy* to save hundreds of dollars during the course of a year's membership, and quite possible to save *thousands*.

Don't Delay!

The number of memberships is strictly limited. During each of the last two years, we've sold out of available memberships.

Fast and Friendly Service

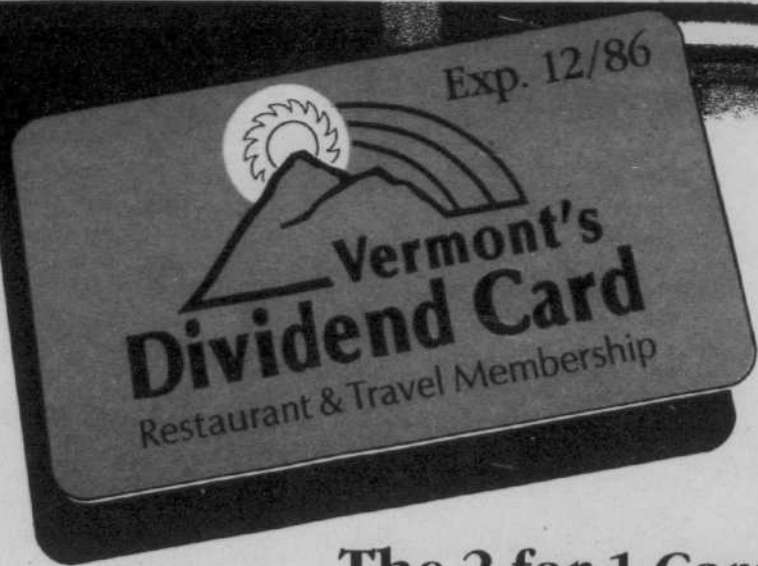
Vermont Dividends is run by people, not computers. Please feel free to call us with any questions you may have.

A Wonderful Gift

If they like to travel or dine out, they'll *love* Vermont's Dividend Card! What other gift offers such value for such a modest cost?

- Wedding Presents
- Anniversary Gifts
- Birthday Presents
- Christmas Gifts

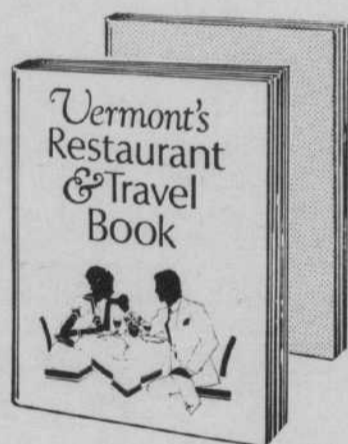
We'll be happy to send a gift card in your name. We're Quick: after December 1, orders will be filled within 24 hours of receipt!



The 2-for-1 Card

Easy and Pleasant to Use

• **Your card** comes in a small wallet. In restaurants, just place it on the table. The price of one dinner entree (main dish) will be deducted from your check! (Buy one, get one free.) No coupons are needed. Portions and service remain unchanged.



Membership Package



• **Vermont's Restaurant and Travel Book:** 128 pages of menu highlights, price ranges, hours, phone numbers, and descriptions of participating attractions. The finest restaurants in Vermont and neighboring regions are listed in this book—and they all honor Vermont's Dividend Card!

• **Special Ticket Book:** Thousands of dollars worth of two-for-one skiing, lodging, and movies, yours with membership!

It's Welcomed By:

● 132 Restaurants

More than 90 of these accept your Vermont's Dividend Card on 2 occasions. Many lunches and brunches, too. 1986 totals — 223 complimentary dinners, for a value of well over \$2,000!

● 34 Hotels, Inns, and Lodges

2 nights of lodging for the price of one (or, in a few cases, 1 night at 50% off). Also, the Red Fox Alpine Lodge offers a complete ski-week vacation, and the Tyler Place offers a family vacation—both 2 for the price of 1!

Red Fox offer: Sunday-Thursday—Lodging, Meals, Smugglers' Notch Lift Tickets, Movies, Pool, and Transportation to the slopes, regularly \$154.95 each. Vermont Dividends Members: 2 for \$154.95! Also, there's a similar weekend offer for just \$79.95!

Tyler Place offer: Lodging, 3 meals daily, Low-key Entertainment, Sports & Recreation...all 2 for the price of 1!

● 6 Downhill Ski Areas

Two lift tickets for the price of one, generally on two occasions. Berkshire East accepts Vermont's Dividend Card for unlimited use!

● 12 Cross-Country Ski Areas

Two trail-fees for the price of one, a total of 24 times!

● 11 Movie Theatres

55 Free Movies, and many more at reduced prices!

● 17 Golf Courses

Greens fees, 2 for the price of 1—36 times!

See Complete List on the Other Side!

JOIN NOW... SAVE ALL YEAR LONG!

I personally guarantee your satisfaction! When you receive your Membership materials, look them over carefully. Then, try out your membership in a participating restaurant. If you are not delighted, simply return your guidebook, ticket book, and card (within 45 days of receipt) and we'll cheerfully and promptly return your membership fee.

Fred Tyburski,
President

Vermont Dividends, Inc.
RR2, Box 172
Lake Hills Drive
Newport, Vermont 05855

\$30 (U.S. funds)

\$35 (Canadian)

Gifts: Be sure to include a name and address (please use a separate piece of paper) for each card ordered. We'll be happy to ship gift memberships at the time you specify, with gift card in your name.

3 or more memberships:

\$27 each

\$32 (Canadian)

New Membership. Starting December 2nd, 1985, memberships will be shipped within 24 hrs. of receipt. **We're Quick!**

Name	
Address	
Town	State
Zip	Phone () <small>(in case we have a question)</small>
Number of Memberships Ordered	
Applicable Fee (See Left) x	
Total Enclosed =	
<input type="checkbox"/> Check Enclosed	
<input type="checkbox"/> MC #	
<input type="checkbox"/> Visa #	
Exp. Date	

For Fastest Service, Call (802) 334-5077!

Get 2-for-1 at each of these attractions! *

RESTAURANTS

North

• Greater Burlington Area:

Cafe Shelburne
Champlain Room at the Radisson
Checked House
City Side
Dockside Cafe
1810 Farmhouse
Greenstreet's
Heather's
Five Spice Cafe
Manhattan Flavors
Pauline's Cafe & Rest.
Peceras
Prime Factor
Rueben James
Shanty on the Shore
Steen's
Trade Winds
Village Green Cafe/Radisson
Village Pump House
Willows

• St. Albans/Enosburg Grand Isle Area:

Blue Lion
Enosburg Inn
Sandbar Motor Inn

• Stowe/Morrisville Jeffersonville/Waterbury Area:

Alpine Motor Lodge
Charlmont
Eden House
Governor Tom's
Hayloft Rest.
Isle de France
Rib Room
Soup's On
Stowe Away
Stowehof Inn
Three Mountain Lodge
Villa Tragara
Whiskers
Yodler

• Eastern Townships of Quebec:

Burning Log
Auberge Georgeville
Les Trois Marmites
Piggery
Auberge Ripplecove Inn

• Newport/Derby Line Barton/Jay Peak Area:

Armando's
Brandy's
Heermansmith Farm
Landing
Longbranch
Michael's

• St. Johnsbury Lyndonville Area:

Ashley's
Catamount Cafe
Town & Country
Wooden Horse

• Littleton/Franconia White Mountain Region of New Hampshire:

Brackett House
Franconia Inn
Playhouse Inn
Thompson Inn

Central

• Middlebury/Brandon/Goshen Area:

Blueberry Hill
Brandon Inn
Dog Team Tavern
Loyal Stow House
Mister Up's
Woody's

• Rutland/Killington Area:

Alpine Inn
Back Behind Saloon Rest.
Dionne's
Grey Bonnet Inn
Mountain Top Inn
Pittsfield Inn
Red Clover Inn
1787 Governor's Table
Summit
Stonebridge Inn
Vermont Marble Inn

• Woodstock/Quechee/Randolph Norwich and Hanover/Lebanon New Hampshire Area:

August Lion
Bentley's-Hanover
Bentley's-Woodstock
Colatina Exit
Enes' Table
Joseph's Waterworks
Netherstone's
Owl's Nest
Parker House
Rumbleseat Rathskeller
Village Inn
Windsor Station

• Montpelier/Warren/Waitsfield Sugarbush Area:

Chez Henri
Common Man
Phoenix
Sam Rupert's
Stockyard Inn
Suzanna's
Tucker Hill
Waitsfield Inn

South

• Brattleboro/Newfane Saxton's River Area:

Belle of Brattleboro
Chesterfield Inn
Four Columns Inn
Inn at So. Newfane

Putney Summit
Saxton River Inn
Talt's
Walker's

• Bennington/Mt. Snow Marlboro Area:

Doveberry Inn
Four Chimney's Inn
Four In Hand
Longwood Inn
Looking Glass
Mainstreets
Red Shutter Inn
Snow Lake Lodge
White House

• Ludlow/Springfield Claremont, New Hampshire Area:

Castle Inn
Chuckles
Echo Lake Inn
Harness House
Indian Shutters Inn
Martin Croix
Penelope's

• Greenfield/Bernardston Williamstown/Mohawk Trail Region of Massachusetts:

Alberti's
Bernardston Inn
Bricker's
Charlemont Inn
1896 House
Fiske Avenue Cafe
Hancock Inn
La Veranda

• Manchester/Londonderry Jamaica Area:

Hearthstone
Johnny Seesaw's
Londonderry Inn
Manchester Highlands Inn
Nordic Inn
Three Mountain Inn
Tollgate Lodge

DOWNHILL SKIING

Ascutey Mountain Resort
Berkshire East Ski Area
Bromley
Burke Mt.
Maple Valley
Smugglers' Notch *Available through
Red Fox Alpine Lodge*

LODGING

Bernardston Inn
Blueberry Hill
Cedarwood Lodge
Charlemont Motor Inn
Colonnade Motor Inn
Econo-Lodge
Four Columns Inn
Four In Hand
Harness House
Holiday Inn-Rutland
Jay Peak

Johnny Seesaw's
Londonderry Inn
Longwood Inn
Manchester Highlands Inn
Playhouse Inn
Pittsfield Inn
Radisson Hotel-Burlington
Red Clover Inn
Red Fox Alpine Lodge
Sandbar Motor Inn
Snow Lake Lodge-Mt. Snow
Stonebridge Inn
Stowe Away
Stowehof Inn
Stoweflake Resort
Thompson Inn
Three Mountain Inn
Three Mountain Lodge
Tucker Hill Lodge
Tyler Place
Vermont Marble Inn
Village Inn
Waitsfield Inn

SKI LESSON

Jay Peak

CROSS COUNTRY SKIING

Ascutey Mountain Resort
Blueberry Hill
Bretton Woods
Catamount Family Center
Edson Hill Manor
Three Stallion Inn
Hazen Notch
Heermansmith Farm
Mountain Top Inn
Tater Hill
Tucker Hill
White House

GOLF

Bellows Falls Country Club
Blush Hill Country Club
Carter Country Club
Champlain Country Club
Equinox Country Club
Farm Resort Golf Club
Kwiniaska Golf Club
Lake Morey Inn & Country Club
Lake St. Catherine Country Club
Maplewood Country Club
Montague Golf Club
Mt. Anthony Golf Club
Newport Country Club
Oakridge Golf Club
Northfield Golf Club
St. Johnsbury Country Club
Tater Hill
Waubeka Golf Links

MOVIES

Bijou-Morrisville
Catamount Films-St. Johnsbury
Cinemas 1 & 2-Bennington
Cinemas 1-6-Greenfield
Cinemas 1 & 2-No. Adams
Ellis Theatres-Springfield

First Cinemas-Brattleboro
Nickelodeon Cinemas-Burlington
Plaza Cinemas-Rutland
Star Theatre Cinemas-St. Johnsbury
Town Hall Cinema-Woodstock
Westway Cinemas-Rutland

TENNIS/RACQUETBALL/ SWIMMING

Brookside Tennis & Health Club
Fountain of Youth
Johnny Seesaw's
Old Mill Racquet Club
Snow Lake Lodge Fitness Center
Summit
Tater Hill
Total Fitness
Wedgewood

ARTS & CULTURE

Carriagewheel Playhouse
Catamount Arts
Champlain Shakespeare Festival
Essex Community Players
Flynn Theatre
Johnson Friends of Art
Michael's Playhouse
Pentangle Council of the Arts
Piggery Theatre
Royal Tyler Theatre
Shelburne Museum
Vermont Mozart Festival
Vermont Symphony Orchestra
Vermont Youth Orchestra
Weston Playhouse
Wilson Castle

SCENIC CRUISES

Belle of Brattleboro
Spirit of Ethan Allen

SCENIC MOUNTAIN RIDES

Bromley Mt.
Jay Peak

ALPINE SLIDE

Bromley Mt.
Stowe

EQUESTRIAN

Mountain Top Inn

BOWLING

Gold Crown Lanes
Morrisville Bowling Ctr.
Waterfront Lanes

PRO BASEBALL

Vermont Reds

NATIONAL EXHIBIT

Basketball Hall of Fame

AUTOMOBILE CARE

Spillane's Car Wash-Burlington

LIMOUSINE SERVICE

Apollo Limousine Service

*Eight of our 132 restaurants offer reduced-price entrees instead of 2-for-1. Savings are substantial in every case.

List subject to change without notice.

A Few Comments from Members...

"We love our card—won't be without one."
—Montpelier, Vt.

"What friendly, fast service. Thank you very
much!"
—Morrisville, Vt.

"Glad to be renewing for the 3rd year! Really
enjoy Vermont Dividends. We have wonder-
ful summer outings playing golf and going
out to dinner."
—Middlebury, Vt.

"The best deal in Vermont."
—Middlebury, Vt.

"Excellent program. Have encouraged three
other couples to join and they have. Restau-
rants I never thought to go to are now our
favorites... Certainly will return and bigly
recommend them to friends."
—Shelburne, Vt.

"We have always had our Dividend Card
received graciously. Great idea—keep up the
good work."
—So. Burlington, Vt.

"We enjoy our card without a doubt... We
like the variety, and the newsletters with
additions are great. It definitely gives us a
reason to get out more. Keep up the good
work!"
—Calais, Vt.

"During our summer months in Vermont,
we enjoy belonging...very much, as we are
retired and too busy to stay in and cook!"
—Fort Walton Beach, Fla.



Vermont Dividends, in operation since 1981, is an enterprise of the Tyburski Family of Newport, Vermont. In the Photo: (L to R) Charlotte, Fred, George, Jason, Michael, and Karin Tyburski.