

# The Pilot

no. 28

57

Piano introduction in G major, 4/4 time. The right hand features a melodic line with a trill on the final note, while the left hand provides a rhythmic accompaniment of chords.

2<sup>d</sup> Ver: Ah! Pi... lot: dangers of--ten met, we all are apt to

Vocal line for the 2nd variation, starting with a fermata on the first note.

1<sup>st</sup> Ver: Oh! Pi... lot: tis a fear--ful night, there's danger on the

Piano accompaniment for the 1st variation, marked *pp stacc.* and *pp*. The right hand has a melodic line with a trill, and the left hand has a rhythmic accompaniment of chords.

2<sup>d</sup> Ver: slight, and thou hast known these raging waves but to sub--due their

Vocal line for the 2nd variation.

1<sup>st</sup> V: deep I'll come and pace the deck with thee, I do not dare to

Piano accompaniment for the 1st variation, marked *p*. The right hand has a melodic line with a trill, and the left hand has a rhythmic accompaniment of chords.

2<sup>d</sup> V: might: It is not a--thy he cries, that gives this strength for

Vocal line for the 2nd variation.

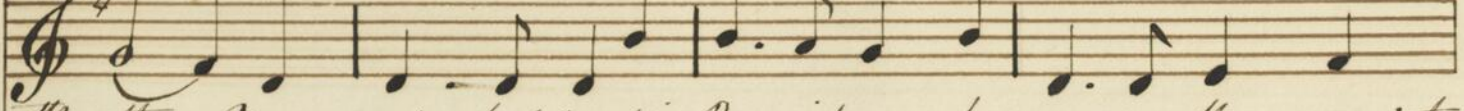
1<sup>st</sup> V: sleep. Go down the sai--lor cries, go down This is no place for

Piano accompaniment for the 1st variation, marked *f col. Voce*. The right hand has a melodic line with a trill, and the left hand has a rhythmic accompaniment of chords.

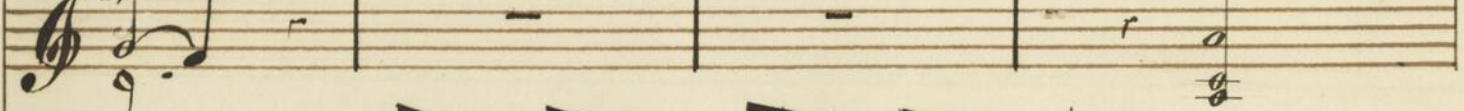
This image shows a page of blank musical manuscript paper. It features 14 sets of five-line staves, arranged in two columns of seven. The paper is aged and has some light brown stains, particularly in the middle section. There is no musical notation on this page.

This image shows the right edge of the adjacent page, which contains musical notation. Visible elements include a treble clef, a common time signature (C), and several staves with notes and rests. The notation is handwritten and partially cut off by the edge of the page.

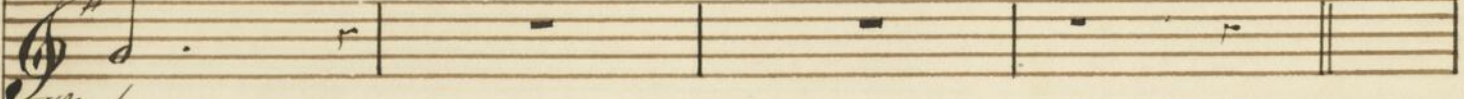
2<sup>d</sup>: me. Fear not! but trust in Prov-idence, where-ev-er thou may'st



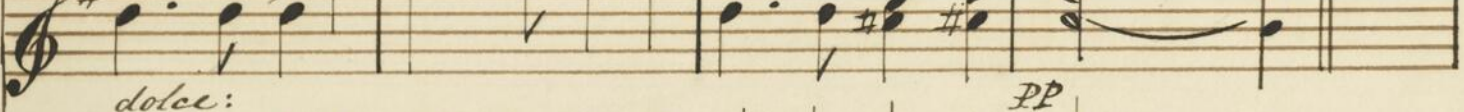
1<sup>st</sup>: thee Fear not! but trust in Prov-idence, where-w-er thou may'st



2<sup>d</sup>: be.



1<sup>st</sup>: be.



3<sup>d</sup> Verse) on such a night the sea engulf'd  
my Father's lifeless form;

my only Brother's Boat went down  
in just so wild a storm.

and such, perhaps, may be my fate,  
But still I say to thee,

Fear not! but trust to Prov-idence whenever thou

