

Sweet little Sally

Composed

with an Accompaniment for the

Piano Forte

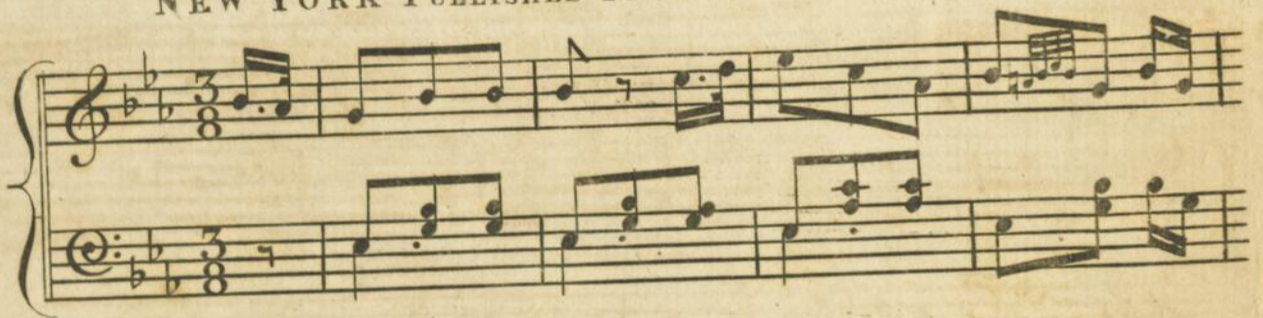
and Respectfully Dedicated to

MISS S. A. CASTLE,

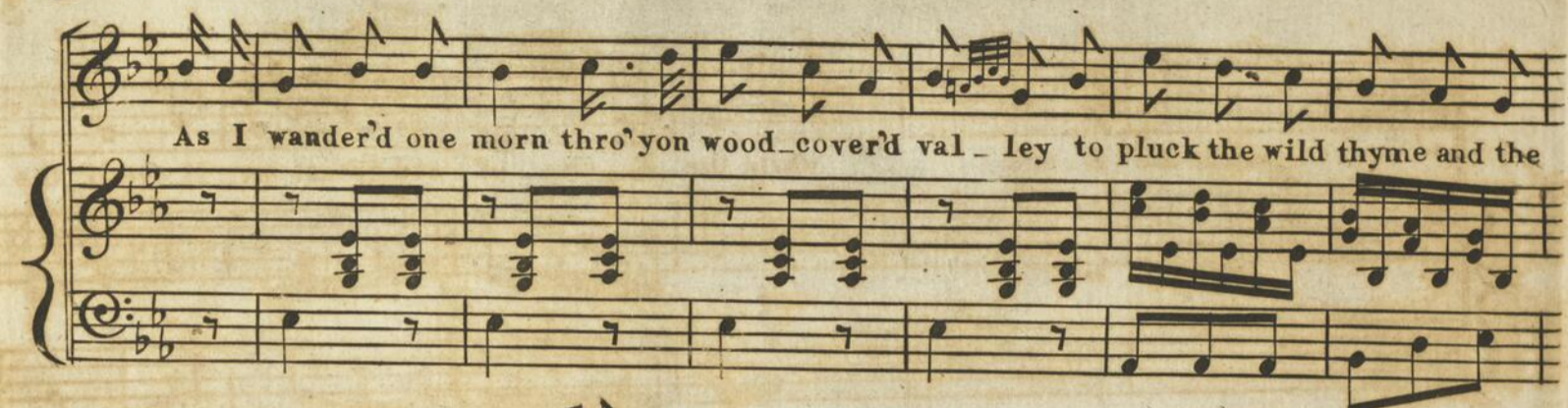
BY *H. Brasch.*

NEW YORK PUBLISHED BY JOHN PAFF.

ALLEGRETTO



As I wander'd one morn thro' yon wood-cover'd val-ley to pluck the wild thyme and the



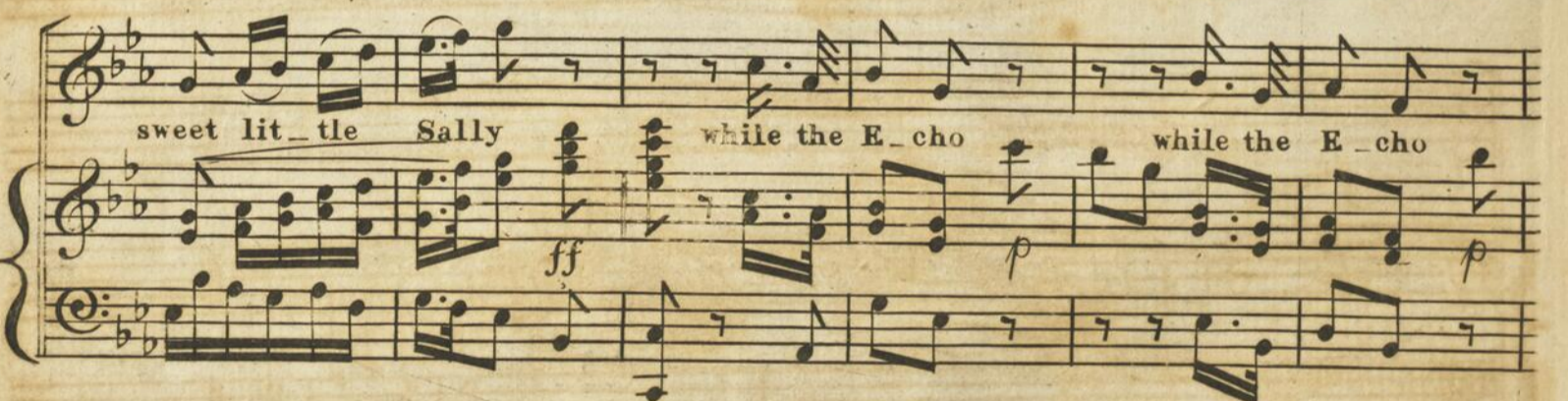
blossoms of May As I wander'd one morn thro' yon wood-cover'd



val-ley to pluck the wild thyme and the blossoms of May I look'd round in vain for my



sweet lit-tle Sally while the E-cho while the E-cho



while the E-cho of red breast en-li-ven'd the way while the E-cho



while the E-cho while the E-cho of red breast en-li-ven'd the

way en - - - li-ven'd en-li-ven'd the way en - - -

cres

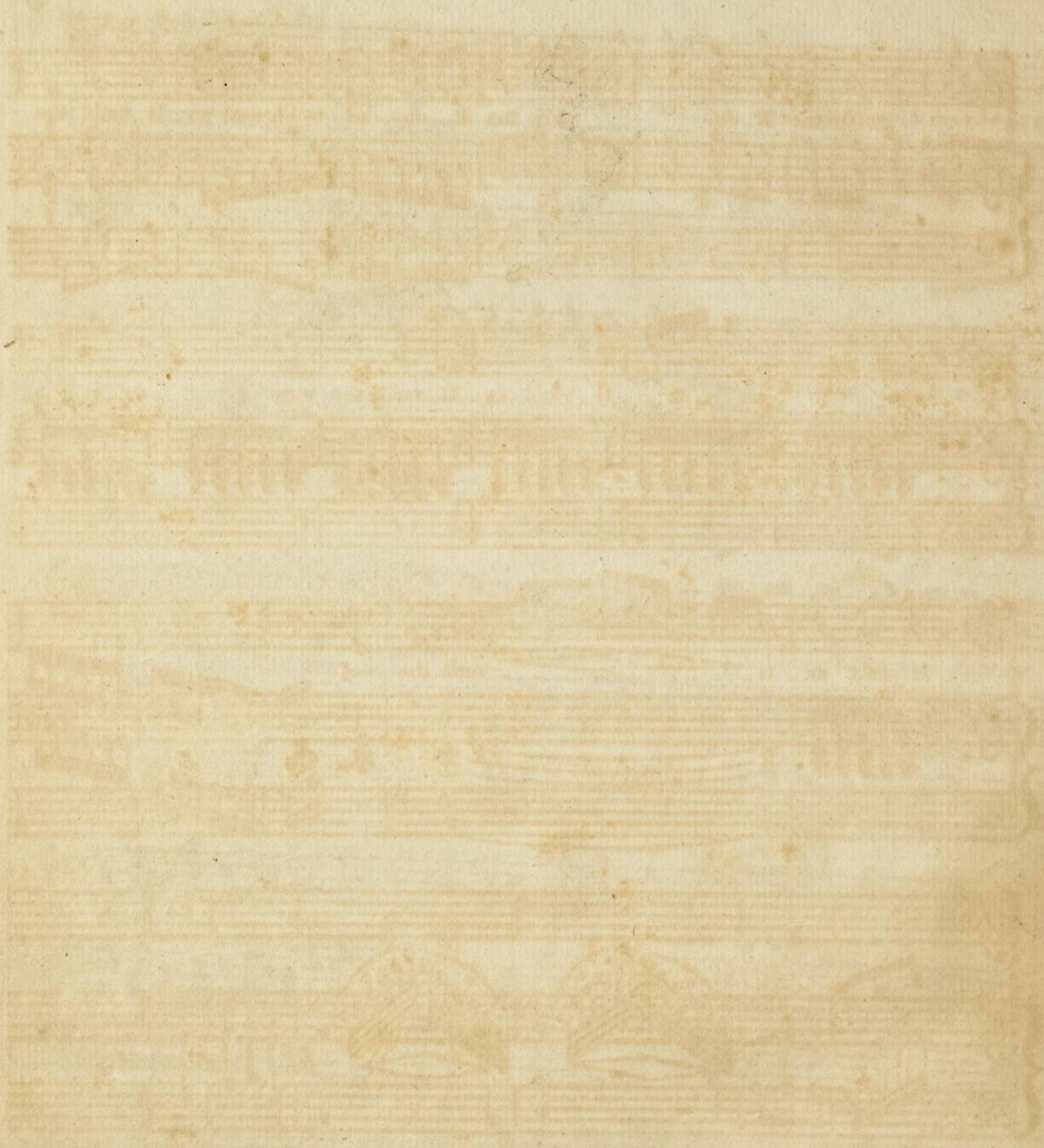
- - li-ven'd en-li - - - ven'd the way.

dim

pp

2

I sigh'd as I said to myself 'tis with reason,
 That Sages declare all is sorrow below,
 For even in childhoods delightfulest season,
 The Echo of Red Breast is followed by woe.



Faint, illegible text at the bottom of the page, possibly a signature or a short paragraph of text.