

2 April
1833

PLAN
of two Certain Water lots
Situat in the Lower Town of
QUEBEC
To be granted to *Mr Wm Finley*
& associates

Water Lot granted to the Late John Blackwood

Gillespie, Finlay, & Co's
Wharf

Water Lot granted to the Heirs
of the late Charles Grant

Continuation of Rue des Sœurs
Easterly

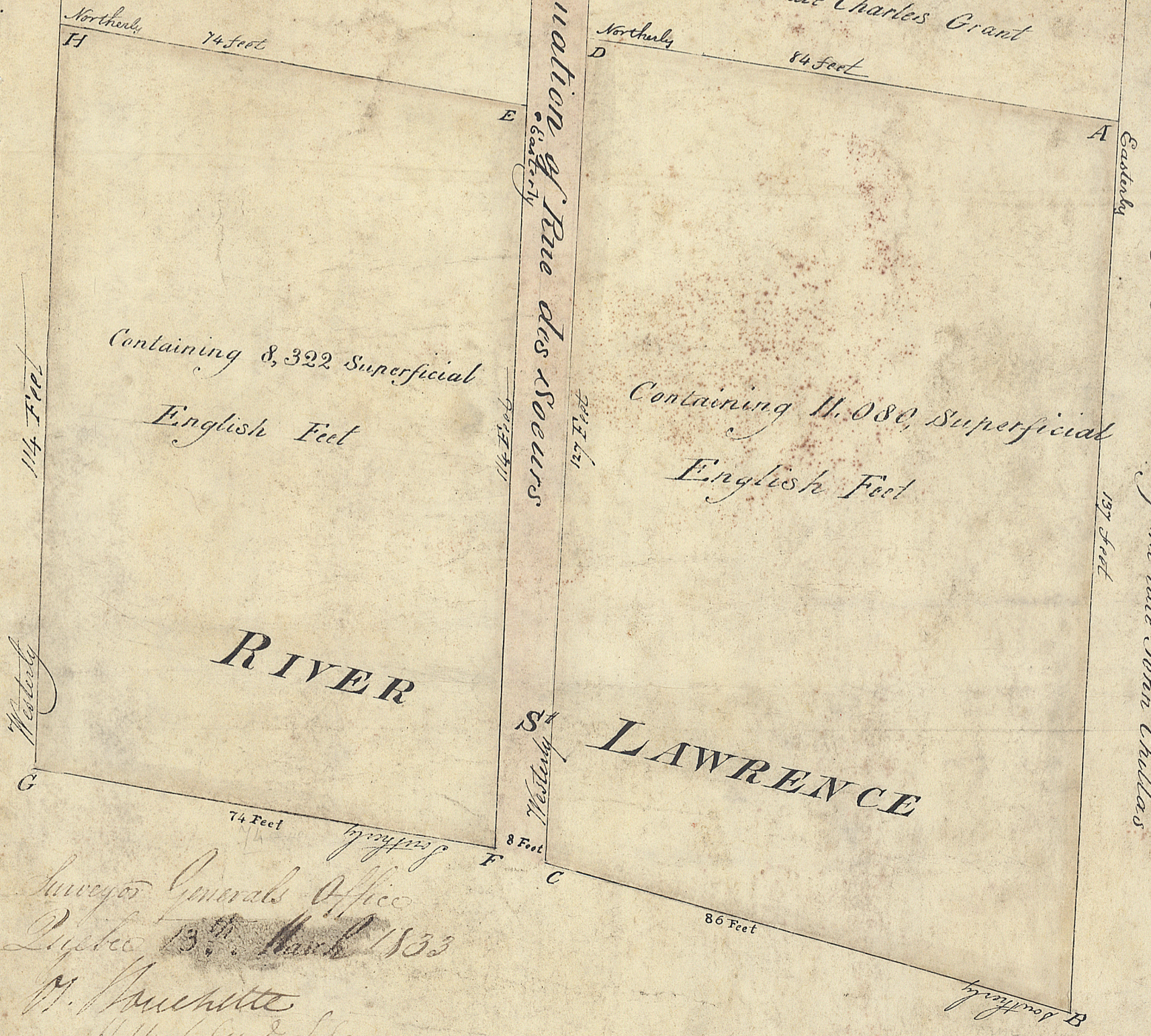
Property of the Heirs of the late John Chollas
Easterly

Containing 8,322 Superficial
English Feet

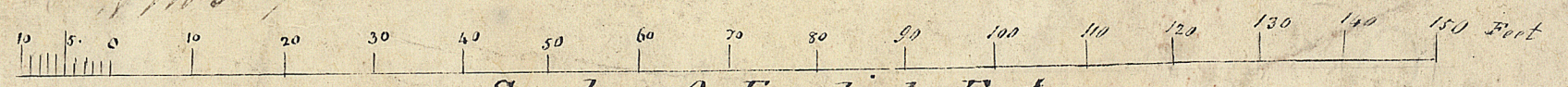
Containing 11,080 Superficial
English Feet

RIVER

LAWRENCE



Surveyor General's Office
Quebec 13th March 1833
W. Finley
H. M. G. G. G.



Scale of English Feet