

**Bibliothèque
et Archives
nationales**

Québec



Le présent fichier est une publication en ligne reçue en dépôt légal, convertie en format PDF et archivée par Bibliothèque et Archives nationales du Québec. L'information contenue dans le fichier peut donc être périmée et certains liens externes peuvent être inactifs.

Version visionnée sur le site Internet d'origine le 23 février 2012.

Section du dépôt légal



Top headlines

- [Québec Mines Congress: A New Formula for a Changing World](#)
- [Geological Surveys by the Bureau de l'exploration géologique du Québec](#)
- [Salluit, Nunavik, Québec](#)
- [Québec Mines - Crossroads of Geoscience and Mineral Resources](#)
- [Interested in Becoming an Exhibitor?](#)
- [Invitation to the PDAC 2012 Convention](#)
- [The fourth Journées De Launay Event](#)
- [Québec Exploration 2011](#)
- [Highlights of Mining Activity in Québec](#)
- [New publications](#)

In a nutshell

- [Newsletter has a New Look](#)

A second look

- [New analytical results of lake sediments](#)

Subscribe...

Find out about the latest discoveries in the mining industry [→](#)



Editorial

Québec Mines Congress: A new Formula for a Changing World

Message from the new Associate Deputy Minister for mining, Robert Marquis. [→](#)

On the Ground

Geological Survey by the Bureau de l'exploration géologique du Québec

Three projects with an impact on geological knowledge and mineral potential in Québec. [→](#)

Salluit, Nunavik, Québec

Inventory of aggregate resources in the village of Salluit. [→](#)

Current

Québec Exploration 2011

An outstanding final event! [→](#)

Highlights of Mining Activity in Québec

An improved report providing a more comprehensive view of the mining sector. [→](#)



Rendez-vous

Québec-Mines - Crossroads of Geoscience and Mineral Resources

In 2012, the MRNF congress broadens its scope to attract stakeholders from all fields in the mining sector. Come and see the result! [→](#)

Interest in Becoming an Exhibitor at Québec Mines 2012?

Reserve your place at Centre des Congrès now! [→](#)

Invitation to the PDAC 2012 Convention

The Plan Nord will be on the agenda at the annual gathering taking place at the Toronto Convention Centre from March 4 to 7, 2012. [→](#)

The fourth Journées De Launay Event

Mineral resources and the new economy: Innovations and discoveries, at Montréal's Palais des congrès from May 8 to 9, 2012 [→](#)



Top headlines

- **Québec Mines Congress: A New Formula for a Changing World**
- **Geological Surveys by the Bureau de l'exploration géologique du Québec**
- **Salluit, Nunavik, Québec**
- **Québec Mines - Crossroads of Geoscience and Mineral Resources**
- **Interested in Becoming an Exhibitor?**
- **Invitation to the PDAC 2012 Convention**
- **The fourth Journées De Launay Event**
- **Québec Exploration 2011**
- **Highlights of Mining Activity in Québec**
- **New publications**

In a nutshell

- **Newsletter has a New Look**

A second look

- **New analytical results of lake sediments**

Subscribe...

Find out about the latest discoveries in the mining industry →



Québec Mines Congress: A New Formula for a Changing World

Editorial by the new Associate Deputy Minister for Mines, Robert Marquis

This is an invitation to come and meet the main players in the world of mineral development—from government departments and agencies ensuring compliance with laws and regulations and a fair revenue stream, to explorers looking for new deposits, infrastructure developers, mine operators, service providers and specialized research centres! Next November, they will all gather at the Québec City convention centre for Québec Mines, the new congress organized by the Ministère des Ressources naturelles et de la Faune.

If you are interested in the North, Québec Mines will provide an opportunity to meet some of the people who live there and find out more about their dreams, hopes and achievements. Come and see for yourself, and discuss job prospects with the people who devote their time, day after day, to building the mines of the present and the future.

A mining convention that includes the Québec population, in keeping with the focus on sustainable, responsible development

Québec Mines will open its doors to all citizens of Québec as it presents the main changes affecting the mining sector. Current topics in the mining industry such as site rehabilitation, new taxation issues and jobs will be a key focus, and information will be provided on the situation of the mining industry and its effects on Québec society. The open-door day will also give over 500 elementary and secondary school students an opportunity to discover the world of mining through specially-designed educational activities.



Top headlines

- [Québec Mines Congress: A New Formula for a Changing World](#)
- [Geological Surveys by the Bureau de l'exploration géologique du Québec](#)
- [Salluit, Nunavik, Québec](#)
- [Québec Mines - Crossroads of Geoscience and Mineral Resources](#)
- [Interested in Becoming an Exhibitor?](#)
- [Invitation to the PDAC 2012 Convention](#)
- [The fourth Journées De Launay Event](#)
- [Québec Exploration 2011](#)
- [Highlights of Mining Activity in Québec](#)
- [New publications](#)

In a nutshell

- [Newsletter has a New Look](#)

A second look

- [New analytical results of lake sediments](#)

Subscribe...

Find out about the latest discoveries in the mining industry →



Geological surveys by the Bureau de l'exploration géologique du Québec: Impacts on Geological Knowledge and Mineral Potential in Québec

The geological surveys conducted in 2011-2012 by the Bureau de l'exploration géologique du Québec (or BEGQ) have helped improve our geological knowledge of Québec. The work has, in particular, located promising new geological units for mineral exploration, extended existing units and shed light on their three-dimensional geometry. It has also led to the identification of new regional, local and discrete exploration targets (PRO 2011-06) ([PDF Format, 4,07 Mb](#)).

We will present, as examples three projects that have had an impact on geological knowledge and mineral potential in Québec.

- [Mapping of the Kuujuaq region](#)
- [2011 James Bay project: Lac Nochet sector](#)
- [Geological revision of the Matagami region](#)

Mapping of the Kuujuaq region

Isabelle Lafrance

To complete the 1:250 000 scale geological mapping of the Churchill Province core zone, cartographic work was launched in the summer of 2011, covering the NTS 24J and 24K sheets south of Ungava Bay.

Several targets of interest for mining companies were identified. Analysis of the results yielded five new indicators in the area mapped, in a range of contexts:

- Céline: Cu-Ag mineralization (1.2% Cu and 7.9 g/t Ag) associated with very strong epidote-zoisite-muscovite alterations in a sequence of volcanic-sedimentary rocks;
- Kavisililik: Pb-Zn mineralization (5.2% Pb and 3324 ppm Zn) in garnet-sillimanite metasediments;
- Siurivvik: rare earth mineralization (2349 ppm REE and 3% P₂O₅) in ultramafic rocks associated with an alkalic complex;
- Baleine: Cu-Ag mineralization (0.5% Cu and 5.7 g/t Ag) with strong potassic alteration between quartzo-feldspathic gneiss and amphibolite;
- Ballantyne Sud: a sulphidized (51.8% Fe₂O₃) iron formation extending into anomal copper concentrations (up to 3471 ppm).

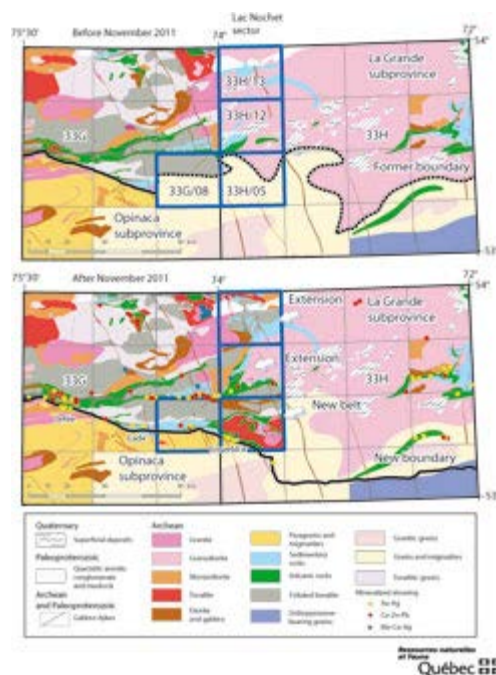
A new uranium indicator, Urani 22 (1205 ppm U, 332 ppm Y and 649 ppm REE) was also discovered outside the mapped area (NTS 24F16) after verification of a radiometric anomaly observed during an aerial geophysical survey carried out by the MRNF over the same period. This discovery led to the staking of 144 new claims when the work was presented at Québec Exploration 2011.

Mapping work on the core zone will continue to the south in 2012, covering sheet 24G and the eastern part of sheet 24F.

2011 James Bay project: Lac Nochet sector

Daniel Bandyayera, Jean Goutier and Pénélope Burniaux

As part of the James Bay project, a 1:50 000 scale geological survey covering four NTS sheets was carried out around lakes Corvette (33G/08), Semonville (33H/05), Nochet (33H12)



and Tilly (33H/13), between the La Grande 3 and La Grande 4 reservoirs.

The main objective was to highlight the potential of a sector about which little is known, last covered by a regional mapping campaign in the 1950s and 1970s. Correlation with recent geology in the Lac Guyer area (Goutier *et al.*, 2000; Bandyayera *et al.*, 2010) enabled the volcanic-sedimentary units in the Guyer Group to be circumscribed, along with the boundary between the Opinaca and La Grande subprovinces, which in itself is an important exploration target for gold.

The main arguments for surveying the sector included:

- the lack of geological knowledge compared to other sectors in James Bay;
- a new, high-resolution geophysical and radiometric survey completed in 2008;
- proximity to the Transtaïga highway;
- an extension of the west-to-east MRNF mapping work under way since 1996;
- a possible extension of a range of metallogenic contexts observed to the west.

The region is known for gold-bearing mineralizations associated with iron formations (such as the Eade and Orfée formations). To the north, porphyry Cu-Mo mineralizations are present, the largest of which is the Tilly deposit. To the south, several indicators of gold-bearing and poly-metallic mineralizations were also observed in the contact zone between the Opinaca and La Grande subprovinces. The best-known indicator is the gold-bearing Corvet Est deposit.

The new geological survey was carried out by a team of seven geologists and eight assistants, mainly travelling by helicopter. The mapping covered 2852 outcrops, and 386 new geochemical analyses were conducted.

The new geological and geophysical surveys were used to update the regional map. The Lac Nochet sector comprises volcanic-sedimentary and Archean plutonic rocks and paleoproterozoic sedimentary basins (Sakami formation), intersected by gabbroic, Archean and Proterozoic dyke swarms. The main results of the work are as follows:

- a change to the boundary between the La Grande and Opinaca subprovinces;
- the identification of an eastern and north-eastern extension to the Guyer Group units;
- the discovery of a new volcanic-sedimentary belt to the south of the Guyer Group (Corvette formation), composed of amphibolites (derived from basalts), altered intermediate and felsic volcanic and volcanoclastic rocks, iron formations, and centimetre- to metre-scale bands of semi-massive to massive sulphides (pyrite, pyrrhotite);
- the identification of a new sedimentary basin (Keyano formation) comprising polygenic conglomerates, wackes, paragneisses, and iron formations. In places, levels of sillimanite-bearing metasediments (>100 m thick and 500 m long) show 19% Al_2O_3 content. Several levels of iron formations of decametric thickness, and over 5 km of extensions, show up to 52% Fe_2O_3 content;
- the discovery of a new Cu indicator (Phenix indicator; 0.8% Cu), associated with a quartz vein located at the contact point between an

- iron formation and a mudrock and wacke sequence;
- potential for ultramafic bedded veins for plainoid mineralizations.

Of the 17 samples collected from the intrusions, 3 were analyzed and showed indicial or anomal content of 1 g/t Pd and 3 g/t Au (1 analysis), 226 ppb Pd and 206 ppb Au (1 analysis) and 25% Cr₂O₃ (1 analysis).

Geological revision of the Matagami region

Pierre Pilote, Julie-Anais Debreil, Kenneth Williamson, Pierre Lacoste and Olivier Rabeau

The 2011 field campaign constituted the final phase in the Matagami project, a multidisciplinary project launched in 2008 to review the geological and metallogenic understanding of the Matagami mining camp (1960-2004 production: 4.6 Mt Zn; 0.494 Mt Cu). The geological revision work completed in the summer of 2011, at a scale of 1:20 000, covered the southern half of sheet NTS 32F13, the northern half of sheet 32F12 and the NE and SE parts of sheets 32E09 and 32E16 respectively (**figure 1**).

These areas together make up the mining camp. A 3D geometric model of the region was also produced to provide a better understanding of the area and predict extensions of specific stratigraphic units, structural elements (folds and faults) and the distribution of VMS-type mineralizations. The project was part of a larger partnership between the MRNF, researchers and students at INRS-ETE, UQAC and École Polytechnique de Montréal, the mining companies Xstrata Zinc and Donner Metals, and SOQUEM.

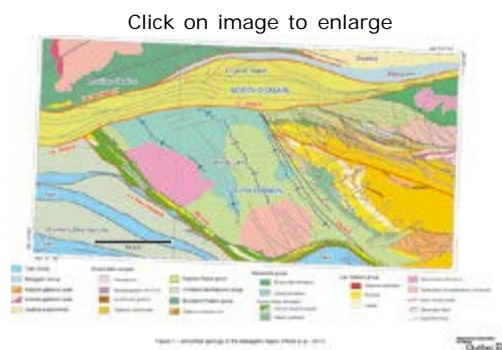


Figure 1 – Simplified geology of the Matagami region (Pilote *et al.*, 2011)

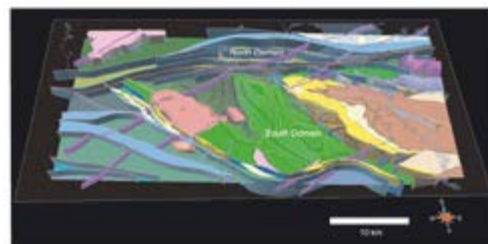


Figure 2 – 3D geological model of the Matagami mining camp showing the position and differences in structure between the North and South domains. The boundary between the two domains is shown in red. The North Domain is characterized by numerous shear zones oriented 070° east-west, dipping steeply to the north. The South Domain has a relatively low deformation rate and two superposed fold phases (phase P1 oriented NNW and phase P2 oriented E-W), producing a dome-and-basin geometry.

The mapped region mainly belongs to the Abitibi subprovince. It contains various volcanic and plutonic rocks, the Rivière Bell Complex (RBC - a vast subconcordant ultramafic to mafic layered intrusion dated at 2724.6 ± 2.5 Ma) and a narrow band of sedimentary rocks (the Matagami Group - MaG, <2700 Ma) in faulted contact with the Opatica Subprovince (OSP) to the north and volcanics to the south. These lithologies are crosscut by Proterozoic gabbro dykes. Two volcanic groups are present: the Lac Watson Group (WatG, 2725 à 2723 ± 2 Ma) and the overlying Wabasse Group (WabG). The WatG consists mainly of rhyolite, rhyodacite and dacite. It is this group that hosts the majority of volcanogenic massive sulphide deposits in the camp. The Key Tuffite, immediately overlying the WatG rhyolites,

represents an important marker horizon for VMS mineralization in this mining camp. The WatG is intruded by the CRB. The Wabassee Group is dominated by andesites and pillowed basalts, either massive or brecciated. The group includes the Rivière Allard Formation (calc-alkaline to transitional affinity), the Rivière Bell Formation (tholeiitic affinity) and the Daniel Formation (calco-alkaline affinity).

Several geographical areas have been defined in the past in this vast region: the South Flank, the North Flank, the Central Camp, and the West Camp. Our work has led us to propose a new subdivision into North and South domains, with the boundary marked by three shear zones named "Rivière Allard", "Rivière Waswanipi" and "Lac Matagami", all oriented 070°. They represent reverse sinistral shears ranging from 50 m to more than 100 m thick, dipping steeply to the north with a stretching lineation plunging steeply to the east. The South Domain will now comprise the historically defined North Flank and South Flank, the Central Camp and the West Camp. Our work demonstrates, just as several researchers have suggested in the past, that the South Flank, Central Camp and West Camp share the same stratigraphy, oriented NW-SE with a gentle to quasi-horizontal dip, developed in a relatively consistent and predictable manner. Mapping also reveals that the South Flank and Central-West camps are affected by a weak S_1 cleavage and by three major F_1 fold axes (two synclines and one large anticline), also oriented NW-SE. An E- to ESE-oriented S_2 schistosity crosscuts S_1 cleavage. As for the North Flank, stratification is oriented 110° with a dip and general polarity to the north. An S_2 schistosity oriented 090° to 110° affects the SO surface and locally generated F_2 folds. Shear zones, also oriented 110°, appear to repeat or truncate certain portions of the volcanic pile and the BRC. The resulting geometry of the juxtaposed North and South domains calls into question the existence of the Galinée Anticline and has serious implications for the VMS potential in the areas described above.

[Send this page](#)

[Previous issues](#) | [Questions and comments](#)



© Gouvernement du Québec, 2012



Top headlines

- *Québec Mines Congress: A New Formula for a Changing World*
- *Geological Surveys by the Bureau de l'exploration géologique du Québec*
- *Salluit, Nunavik, Québec*
- *Québec Mines - Crossroads of Geoscience and Mineral Resources*
- *Interested in Becoming an Exhibitor?*
- *Invitation to the PDAC 2012 Convention*
- *The fourth Journées De Launay Event*
- *Québec Exploration 2011*
- *Highlights of Mining Activity in Québec*
- *New publications*

In a nutshell

- *Newsletter has a New Look*

A second look

- *New analytical results of lake sediments*

Subscribe...

Find out about the latest discoveries in the mining industry →



Inventory of Aggregate Resources for the Region of Salluit, Nunavik, Québec

André Brazeau
Guillaume Allard

The village of Salluit is located in the extreme north of Nunavik, approximately 10 kilometres from Hudson Strait (**figures 1 and 2**). Its population (approximately 1300 inhabitants) is growing rapidly, just like that of Nordic villages in general. For this reason the need for housing and municipal infrastructure is very high. The presence of continual permafrost combined with global warming makes the construction of these infrastructures more difficult.

Click on image to enlarge



Figure 1 : Location of the village

Click on image to enlarge



Figure 2 : Scope of the study region and satellite view of the area

The demand for aggregates for the construction of raft foundations (foundations for buildings and roads) is all the more important (**figure 3**) and the need for an inventory is becoming obvious

So, during the summer of 2011, an inventory of aggregate resources was performed in the Salluit region. The study area spreads to 7 km south of the village and covers an area of approximately 20 km² in the northern part of NTS 35J04 lamina.

Click on image to enlarge



Figure 3 : Village de of Salluit

The narrow valley of Salluit is surrounded by mountains and avalanche corridors to the east and west, a fjord to the north and a rocky hummock to the south. The



Figure 4 : Construction of infrastructures on large granular backfill

end of the valley consists mainly of soft sediment rich in ice which, when thawing, creates different settlements in the land. This valley is wedged between the mountain sides which rise to almost 250 meters above sea level (**figure 4**).

The superficial deposits are mainly located in the valley while on the topographic heights, the sediments is generally thin or non-existent. The deposits are essentially composed of sediment which is glacial, glaciofluvial, marine, fluvatile, gravity and organic. The till is generally rich in boulders and stones with a silty-sandy matrix. The glaciofluvial deposits are composed of average-to large-grain sand, gravel and, in general, rounded pebbles. The marine deposits cover a good portion of the end of the valley under an altitude of 150 meters. Following the melting of the continental glaciers, the Arctic Ocean waters flooded land still sunken by the passage of the glacier. In fact, the deglaciation of the territory in approximately 7900 BP (Kasper and Allard, 2001) was quickly followed by a marine overlap. The postglacial sea in the region was called the "Iberville Sea" by Laverdière (1969). The Iberville Sea waters spread out over the Salluit area up to an altitude of 150 meters. Thereafter, the progressive retreat of the sea at the rate of the isostatic rebound controlled the different surface deposits that we find today in the Salluit Valley (L'Hérault, 2009). The marine deposits are sometimes covered by more recent deposits such as the colluvial deposits at the foot of the slopes and coastal sand deposits near the coast.

The main sources of aggregates are contact glaciofluvial deposits and deltaic marine deposits.

Intervention of the MRNF

The results of the inventory enabled the localizing and characterization of aggregate sources and evaluated their extent and quality.

Field activities consisted mainly of numerous sampling with a shovel and visiting natural cutting and several sand quarries. The granular deposits were delineated by aerial photographs. Furthermore, several sand or gravel samples were taken and sent to the laboratory to determine their physico-mechanical properties.

Results

This work enabled two large granular deposits several kilometres to the south of the village to be characterized (figure 5, boxed in orange). According to the different standards established by the ministère des Transports, the quality of the material in the region is very good. According to their intrinsic characteristics, the coarse aggregates meet the standards of categories 1 and 2 while the sand complies with the standards of category 1.

[Click on image to enlarge](#)

Coarse aggregates (>5 mm) consist mainly of granite rock fragments and metamorphic rocks. The fine aggregate (<5 mm) is sand which comes from granite rocks (quartz, feldspar, black

mica). Sand is generally medium to coarse grain.

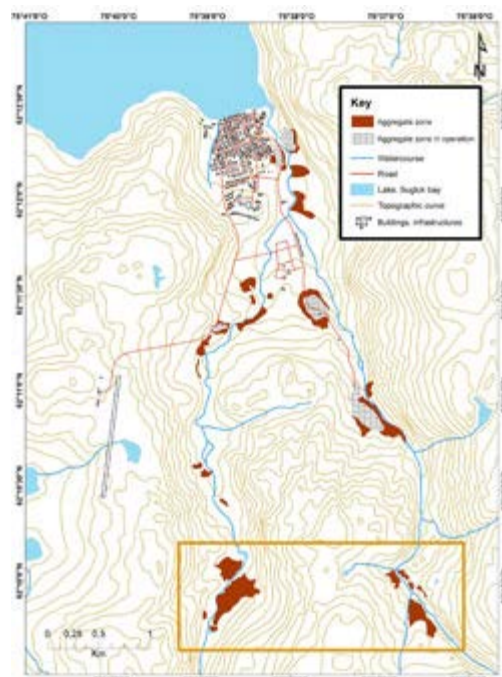


Figure 5 : Mapped aggregate areas

The exploitation of these aggregate resources will allow the needs of construction to be met for residential and community areas. Moreover, over the next few years, it is important to ensure the expansion of the village towards the south and to build an access road so as to allow residential development.

References

L'Hérault, E., 2009. *Contexte climatique critique favorable au déclenchement de ruptures de mollisol dans la vallée de Salluit*, Nunavik, Mémoire de maîtrise Master's thesis, Université Laval, 150 pages.

Laverdière, C., 1969. Mer d'Iberville, *Revue de géographie de Montréal*, Montréal, XXIII (3) : 358 pages.

Kasper, J. N. and et M. Allard. 2001. " Late-Holocene climatic changes as detected by the growth and decay of ice wedges on the southern shore of Hudson Strait, northern Québec, Canada. " *Holocene*, volume 11 (5): pages 563-577.

[Envoyer cet article](#)

[Numéros précédents](#) | [Questions et commentaires](#)



© Gouvernement du Québec, 2012

Top headlines

- [Québec Mines Congress: A New Formula for a Changing World](#)
- [Geological Surveys by the Bureau de l'exploration géologique du Québec](#)
- [Salluit, Nunavik, Québec](#)
- [Québec Mines - Crossroads of Geoscience and Mineral Resources](#)
- [Interested in Becoming an Exhibitor?](#)
- [Invitation to the PDAC 2012 Convention](#)
- [The fourth Journées De Launay Event](#)
- [Québec Exploration 2011](#)
- [Highlights of Mining Activity in Québec](#)
- [New publications](#)


In a nutshell

- [Newsletter has a New Look](#)

A second look

- [New analytical results of lake sediments](#)

Subscribe...

Find out about the latest discoveries in the mining industry 



Québec Exploration 2011 – An Outstanding Final Event!

By Gladys Chamberland

The 2011 Québec Exploration event, held as usual in November, was the last in its line. It is not without a little sadness, then, that we look back at a congress that broke all records.

The 2011 edition of Québec Exploration, Québec's annual mineral exploration congress, was outstanding for several reasons. A reflection of the mining industry's current vigour, a record number of participants converged on the Château Frontenac hotel for three days of papers, workshops, meetings and discussions based on the theme *From knowledge to discovery!*

In all, 2900 people, including 2312 registered congress participants, took part in the various activities making up the annual event, a 23% increase compared to 2010. Almost 15% of participants came from outside Québec: 319 from the other Canadian provinces and territories, and 39 from outside Canada. This was in addition to the 36 presenters and panellists who discussed current topics with the participants, and also 175 exhibitors from government, industry and education who took part in poster sessions and presented their products and services.

The highpoints of the congress included an address by the honorary chairman, Michel Gauthier, mineral prospecting professor at UQAM, and the open-door day on Thursday, which was a huge success. Over 300 elementary and secondary school students from the region, along with 270 members of the public, came to find out more about Québec's mineral resources. Last, a visit from the Premier of Québec, Jean Charest, and his speech about the Plan Nord brought Québec Exploration 2011 to a successful conclusion.

The Ministère des Ressources naturelles et de la Faune annual event will change in 2012

In 2012, the Ministry's annual event will expand. It will take place at the Québec City convention centre, under a new name and a revamped format, from November 26 to 29, 2012, on the theme *Of Mines and Men*.

For more information about the congress,

- Read [Québec Mines – crossroads of geoscience and mineral resources](#).
- Visit the [website](#).



Top headlines

- *Québec Mines Congress: A New Formula for a Changing World*
- *Geological Surveys by the Bureau de l'exploration géologique du Québec*
- *Salluit, Nunavik, Québec*
- *Québec Mines - Crossroads of Geoscience and Mineral Resources*
- *Interested in Becoming an Exhibitor?*
- *Invitation to the PDAC 2012 Convention*
- *The fourth Journées De Launay Event*
- *Québec Exploration 2011*
- *Highlights of Mining Activity in Québec*
- *New publications*

In a nutshell

- *Newsletter has a New Look*

A second look

- *New analytical results of lake sediments*

Subscribe...

Find out about the latest discoveries in the mining industry →



Highlights of Mining in Québec

An improved report for a more complete picture of the mining sector

James Moorhead and Abdelali Moukhsil

After two years of change and numerous additions and modifications to the annual report on mining in Québec, version 2011 comes back with force having:

- A more detailed chapter on the restoration of the mining sites;
- The addition of numerous and interesting statistics, presented in graphs and tables;
- A detailed description of bill n°14, modifying the Mining Act.

In particular, you will find the latest information on mining investments, the value of mining product shipments and jobs in the mining industry.

You will also find the highlights of mining in Québec as well as information on all aspects of mining development, among them, the mining system and protection of the territory, the work of geoscientists, mining exploration, mining upgrading and development, mining operation and mining restoration.

Since 2008, the annual report has been available free of charge in PDF form on the **MRNF Internet site**.

Let us know what you would like to see in the annual report on mining activities in Québec. The redesigning of this essential document will continue in 2012: Do not hesitate to send us your **comments and suggestions**.

Top headlines

- [Québec Mines Congress: A New Formula for a Changing World](#)
- [Geological Surveys by the Bureau de l'exploration géologique du Québec](#)
- [Salluit, Nunavik, Québec](#)
- [Québec Mines - Crossroads of Geoscience and Mineral Resources](#)
- [Interested in Becoming an Exhibitor?](#)
- [Invitation to the PDAC 2012 Convention](#)
- [The fourth Journées De Launay Event](#)
- [Québec Exploration 2011](#)
- [Highlights of Mining Activity in Québec](#)
- [New publications](#)


In a nutshell

- [Newsletter has a New Look](#)

A second look

- [New analytical results of lake sediments](#)

Subscribe...

Find out about the latest discoveries in the mining industry 



Québec Mines – Crossroads of Geoscience and Mineral Resources

A new event in Québec in November 2012

In 2012, the MRNF congress will renew its image, move to the Québec City convention centre and change its name to **Québec Mines – Crossroads of geoscience and mineral resources**. The conference will broaden its scope to attract stakeholders from all fields in the mining sector and address all aspects of mineral resource development. Whether you come from the scientific, financial, industrial, government or business world, or the mining exploration and development community, you will find something to whet your appetite. Québec Mines 2012, based on the theme **Of Mines and Men**, will be a world-class experience providing multiple opportunities to learn, discuss, network, meet and do business.

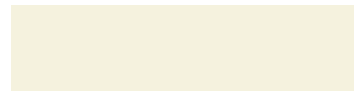
Québec Mines – Crossroads of geoscience and mineral resources will include:

- Paper presentation sessions and training workshops focusing on mineral exploration, and also on other aspects of mine development, from extraction to site rehabilitation;
- More space for trade exhibitors, such as mining corporations, exploration companies and service providers, with opportunities for promotional presentations;
- Government booths offering all the information needed by businesses, including information on geoscientific and geographic data, regulations, and business support and site rehabilitation programs;
- A showcase on the Plan Nord and the numerous business opportunities it creates;
- Activities for the general public, designed to raise awareness about geoscience in general and mining in particular;
- Release of results from work carried out by Géologie Québec, along with new exploration targets;
- The official launch of the second edition of the historical document “Des mines et des hommes” by historian Marc Vallières, which relates the history of mining in Québec over the last 400 years;
- Social activities offering networking opportunities in an enjoyable atmosphere;
- Assistance from friendly, red-coated guides who will greet participants and

Québec Mines : a new name—for an ongoing event

Québec Mines 2012 will be the 33rd annual congress organized by the Ministère des Ressources naturelles et de la Faune (MRNF). Since 1980, the MRNF has organized an annual congress for Québec's mining community, where it presents the results of its field surveys. The event was originally known as the *Séminaire d'information sur la recherche géologique*, but in 2003 it became known as *Québec Exploration* after a partnership was established with the Québec Mineral Exploration Association (AEMQ). As the leading convention for mineral exploration in Québec, it received an ever-growing number of visitors, reaching a record of 2900 in 2011. The new event, Québec Mines, continues this long-standing tradition and will retain the same hospitable atmosphere.

make their time at the congress an
unforgettable experience!



For more information, visit our [website](#). The website will be updated regularly with new information.

It's a date—November 26 to 29, 2012, at the Québec City convention centre, for Québec Mines – Crossroads of geoscience and mineral resources.

[Send this page](#)

[Previous issues](#) | [Questions and comments](#)



© [Gouvernement du Québec](#), 2012

Top headlines

- [Québec Mines Congress: A New Formula for a Changing World](#)
- [Geological Surveys by the Bureau de l'exploration géologique du Québec](#)
- [Salluit, Nunavik, Québec](#)
- [Québec Mines - Crossroads of Geoscience and Mineral Resources](#)
- [Interested in Becoming an Exhibitor?](#)
- [Invitation to the PDAC 2012 Convention](#)
- [The fourth Journées De Launay Event](#)
- [Québec Exploration 2011](#)
- [Highlights of Mining Activity in Québec](#)
- [New publications](#)


In a nutshell

- [Newsletter has a New Look](#)

A second look

- [New analytical results of lake sediments](#)

Subscribe...

Find out about the latest discoveries in the mining industry 



Interested in Becoming an Exhibitor at Québec Mines 2012?

The team at the Ministère des Ressources naturelles et de la Faune (MRNF) encourages all potential exhibitors to take part in its annual congress, **Québec Mines 2012**, crossroads of geoscience and mineral resources. It will be held at the Québec City convention centre from November 26 to 29, 2012. The congress will set new standards in terms of size, calibre and scope.

You can reserve your place at the Québec City convention centre today. The new Québec Mines formula, along with the new venue, offers several advantages:

- **More space for each exhibitor, and space for more exhibitors**
 - Possibility of reserving more than one space, and of exhibiting machinery.
- **One hall for all exhibitors**
 - Better visitor circulation and more visitors at your booth.
- **More visibility**
 - Display of your logo on the Québec Mines website.
 - Possibility of presenting your products and services at a promotional event on a stage in the exhibition hall.
- **More opportunities to meet people**
 - Several potential clients reunited in the same space: Mining exploration and operations people, representatives from government ministries, architects of the Plan Nord, etc.

Spaces are allocated on a first come, first served basis! Don't miss your chance!

For more details on the procedure for reserving a space, or if you have questions about Québec Mines 2012, contact the Québec Mines team. You can download the space reservation form ([Format PDF, 116 Mo](#)).

- For all exhibitor-related questions, please contact Marie Dussault at marie.dussault@mrnf.gouv.qc.ca.
- For other questions about the congress, please contact Christian Fortin at christian.fortin@mrnf.gouv.qc.ca.
- To get answers by phone, please call 1 866 249-0649.

We hope to see you at Québec Mines 2012!



Top headlines

- [Québec Mines Congress: A New Formula for a Changing World](#)
- [Geological Surveys by the Bureau de l'exploration géologique du Québec](#)
- [Salluit, Nunavik, Québec](#)
- [Québec Mines - Crossroads of Geoscience and Mineral Resources](#)
- [Interested in Becoming an Exhibitor?](#)
- [Invitation to the PDAC 2012 Convention](#)
- [The fourth Journées De Launay Event](#)
- [Québec Exploration 2011](#)
- [Highlights of Mining Activity in Québec](#)
- [New publications](#)


In a nutshell

- [Newsletter has a New Look](#)

A second look

- [New analytical results of lake sediments](#)

Subscribe...

Find out about the latest discoveries in the mining industry 



Invitation to the PDAC 2012 Convention

A team from the mining sector at the Ministère des Ressources naturelles et de la Faune will be present once again at the annual convention of the Prospectors and Developers Association of Canada (PDAC), which will take place from March 4 to 7, 2012 at the Toronto Convention Centre. The team will include experts offering guidance on new exploration targets, as well as a dynamic group of presenters with answers to all your questions about Québec's mineral potential, the availability of geoscientific information, current laws and regulations, mining development and, of course, the Plan Nord.

At the Convention, geologists from Géologie Québec will present interesting new data, such as the results of a major geochemical survey of lake bottom sediments conducted in the summer of 2011 in the Ungava region (PRO 2012-03 and PRO 2012-04), the findings of a project to assess mineral potential and delimit promising zones for the discovery of new Besshi-type Cu and Zn mineralizations in the Labrador Trough, and around sixty new exploration targets.

The team from Géologie Québec will also release the results of a new magnetic and gamma-ray spectrometry survey of a sector to the south of Kuujjuaq, covering part of the Labrador Trough and Churchill Province. The survey, completed in two blocks, covers 38 sheets at 1:50 000 scale, representing a total area of 28 000 km², and identifies several interesting anomalies. A report presenting all the technical aspects of the survey, with geophysical maps at 1:50 000 scale and the associated digital data, will be published under document nos. DP 2011-06 and DP 2011-07. The results will also be available at the address, using the "**E-Sigeom (Examine)**" application.

As in previous years, our database specialists will be on hand to provide information about computer systems and support programs for mining companies. Access to data from SIGEOM will be available, and claims may be acquired on-site using the GESTIM system.

Last, our presenters will be glad to demonstrate why you should register for the MRNF's new annual congress, **Québec Mines**, crossroads of geoscience and mineral resources. This unique, high-level congress will take place at the Québec City convention centre from November 26 to 29, 2012.

A key date: the Plan Nord seminar

Monday, March 5 will be a special day, since it will be devoted to the Plan Nord. A series of papers on various aspects of mining development in the area covered by the Plan Nord will be presented in the afternoon in rooms 202 A and B of the Toronto Convention Centre. Mining development, investment opportunities, exploration projects and mineral potential in the area covered by the Plan Nord will all be on the agenda.

Seminar timetable ([PDF Format, 1,67 Mb](#))



Top headlines

- [Québec Mines Congress: A New Formula for a Changing World](#)
- [Geological Surveys by the Bureau de l'exploration géologique du Québec](#)
- [Salluit, Nunavik, Québec](#)
- [Québec Mines - Crossroads of Geoscience and Mineral Resources](#)
- [Interested in Becoming an Exhibitor?](#)
- [Invitation to the PDAC 2012 Convention](#)
- [The fourth Journées De Launay Event](#)
- [Québec Exploration 2011](#)
- [Highlights of Mining Activity in Québec](#)
- [New publications](#)


In a nutshell

- [Newsletter has a New Look](#)

A second look

- [New analytical results of lake sediments](#)

Subscribe...

Find out about the latest discoveries in the mining industry 



The fourth *Journées De Launay* Event Mineral resources and the New Economy: Innovations and Discoveries

The *Journées De Launay* event, an international French-language symposium on metallogeny, will take place for the fourth time at Montréal's Palais des congrès on May 8 and 9, 2012, during the 80th congress of the Association francophone pour le savoir (ACFAS).

The successive *Journées De Launay* events, intended to provide a forum for discussions about mineral resources, have led to the establishment of an international network of geologists from French-speaking countries and other regions, including the Maghreb, Western Europe, Eastern Europe, Canada, Latin America, Australia and Vietnam. The first forum was held at the ACFAS conference in Montréal in 2004, followed by events at Marrakech, Morocco in 2006, and at the 22nd Earth Sciences Meeting held in Nancy, France in 2008.

This year, the forum for discussions on mineral resources and their role in modern society will focus, in particular, on deposits of the metals used in new technologies, and on innovations in the field of entrepreneurship. Special attention will be paid to descriptions of the mechanisms governing the formation of deposits, which have been scrutinized in many different university and government research projects and have led to the establishment of new exploration guides. The congress will be followed by a four-day excursion to examine atypical deposits in the Abitibi belt.

The titles for the presentation sessions are as follows:

- New developments in the field of base metals
- Innovative approaches to precious metal deposits
- Essential metals for emerging technologies: issues and prospects
- Innovation, entrepreneurship and the discovery of new deposits

The deadline for submitting a paper or poster proposal is February 10, and all abstracts must be received by March 16, 2012.

For more information

[Send this page](#)

[Previous issues](#) | [Questions and comments](#)



© Gouvernement du Québec, 2012