

# SOLO B $\flat$ CORNET THE BRIDAL ROSE. CONDUCTOR OVERTURE

Price 2.00

This piece is also published as Piano Solo Price 75 c.

C. LAVALLEE.  
arr. by J. B. CLAUS.

**Maestoso.**

**PUB. FOR ORCH.**

**All<sup>o</sup> mod<sup>to</sup>**

2 3 4

**And<sup>no</sup>** 1<sup>st</sup> Bb Cor.  
*pp* Alto. *p*

**All<sup>o</sup> con brio.**  
Cor. *p* Cl. *ff* *p* *ff* *ff*

1 2 play 2<sup>d</sup> time  
*pp*

oblig. *p* *cresc.* *dim.* **Risoluto.** *ff*



And<sup>no</sup>

Bb Solo

Alto. *p*

*p*

*p*

*p*

Clar. *p* *mf* *dim.*

All<sup>o</sup> con brio.

*rit.* *pp* *ff* Cor. *p* Clar. *ff*

*p* Clar. *ff* *ff*

*p*

*ff*

*sf*

1. *pp* *oblig.*

2. *play 2<sup>d</sup> time*

*p*

*Risolut<sup>o</sup>.*

*cresc.* *dim.* *ff*

*ff*







Brady

Bridal Rose

Musical notation for the first section of the piece. It consists of five staves. The first two staves are in treble clef with a key signature of two flats (B-flat and E-flat). The first staff begins with a *pp* dynamic marking. The second staff has a *pp* marking and a handwritten 'b' above it. The third staff is in bass clef. The fourth staff has a *p* marking and a *mf* marking. The fifth staff has a *pp* marking. There are first and second endings marked with '2' and '3' above the notes.

Musical notation for the second section of the piece. It consists of five staves. The first staff is in treble clef with a key signature of two flats and a 2/4 time signature. It begins with the instruction "All<sup>o</sup> con brio." and a *ff* dynamic marking. There are first and second endings marked with '2' above the notes. The second staff has a *ff* marking and a '10' above it. The third staff has a *p* marking and a *ff* marking. The fourth staff has a *p* marking and a *cresc.* marking. The fifth staff has a *p* marking and a *cresc.* marking.

Musical notation for the third section of the piece. It consists of four staves. The first staff is in treble clef with a key signature of two flats and a 2/4 time signature. It begins with the instruction "Risoluto." and a *dim.* marking. The second staff has a *ff* marking. The third staff has a *ff* marking. The fourth staff has a *ff* marking.





1 1 3 1

*p*

1 2

*p* *mf*

3

*p* *dim.*

*All<sup>o</sup> con brio.*

*rit.* *pp* *p* *ad lib.*

2 2

*p* *ff* *p*

*p*

*ff*

*f* 1 2. *play 2d time*

*pp*

*p* *cresc.* *dim.*

*Risoluto.* *ff*

*ff*



*p*

*p*

*p*

*mf*

All<sup>o</sup> con brio.

*dim.*

*rit.*

*pp*

*2*

*2*

*1*

*p*

*p*

*ff*

*ff*

*ff*

*pp*

*pp*

*pp*

*pp*

*pp*

*pp*

*pp*

*ff*

*ff*

*ff*

*ff*

*ff*

*ff*

*ff*

*ff*

Risoluto.

cresc.

# THE BRIDAL ROSE.

2d & 3d B $\flat$  CLARINET.

OVERTURE.

C. LAVALLEE.

**Maestoso.**

*ff* *p* *ff* *p*

*ff* *p* *ff* *p* *G.P.* *pp* *p* **Andte**

*Solo.* *p* *cresc.* *f* *p*

*ff* **Allo modto** *p* *f* *p* *ff* *p*

Andno

The Andno section consists of six staves of music. The first staff begins with a treble clef, a key signature of one flat (B-flat), and a time signature of 6/8. The music starts with a piano (*pp*) dynamic and gradually increases to a piano (*p*) dynamic. The second and third staves continue the melodic and harmonic development. The fourth staff features a piano (*p*) dynamic and includes a *rit.* (ritardando) marking. The fifth staff reaches a mezzo-forte (*mf*) dynamic. The sixth staff concludes the section with a piano (*p*) dynamic and a *dim.* (diminuendo) marking.

Allo con brio.

The Allo con brio section consists of six staves of music. The first staff is in 2/4 time and begins with a piano (*p*) dynamic. The second staff features a piano (*p*) dynamic and a *ff* (fortissimo) dynamic. The third staff includes a *ff* dynamic and a *cresc.* (crescendo) marking. The fourth staff features a forte (*f*) dynamic and includes first and second endings. The fifth staff concludes the section with a piano (*pp*) dynamic and a *dim.* marking.

Risoluto.

The Risoluto section consists of two staves of music. The first staff begins with a forte (*ff*) dynamic. The second staff concludes the section with a forte (*ff*) dynamic.







Alto Sax.

Andro

Solo

pp

mf

Allo con brio.

dim.

rit. pp

p

ff

3d Clar.

8

p

ff

sf

Risoluto.

pp

p

cresc.

dim.

ff

ff

# THE BRIDAL ROSE.

OVERTURE.

BARITONE SAXOPHONE.

C. LAVALLEE.

122 *Maestoso.*

*ff* *p* *ff* *p* *ff* *p* *ff* *p* *ff* *p* *G.P.*

*Andte*

*p* *p* *f*

*p* *ff*

*Allo moderato.*

*p*

*ff* *p*

*f*

*p* *ff*

*ff*

3 And<sup>no</sup> 1  
pp

pp

p

1 p mf

p 2 3 rit.

All<sup>o</sup> con brio.

2 2 2 p p ff

Baritone 8 ff

1 2 p

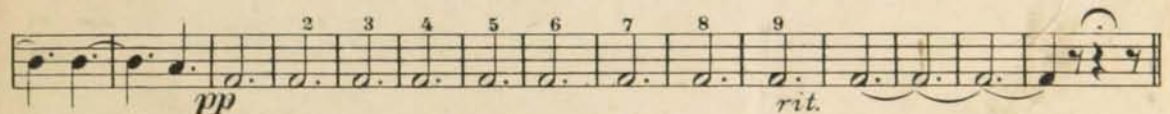
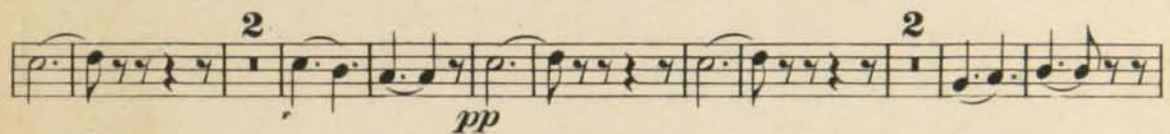
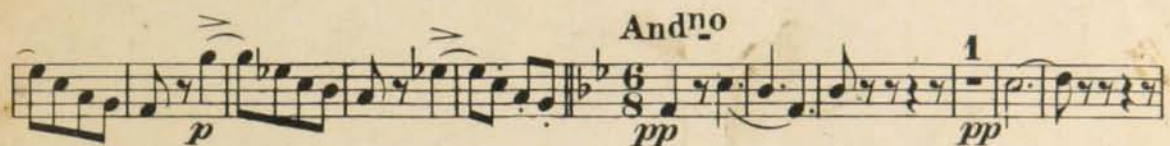
p cresc. dim.

Risoluto.

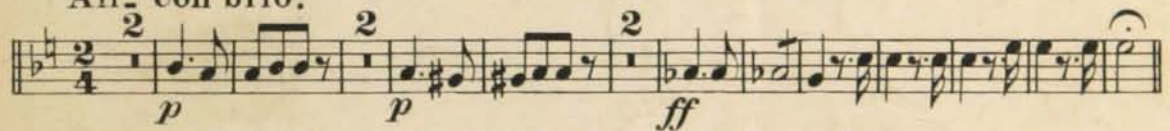
ff

ff

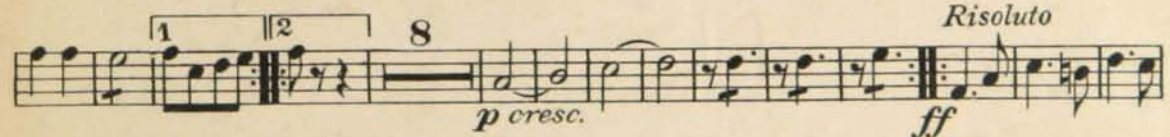
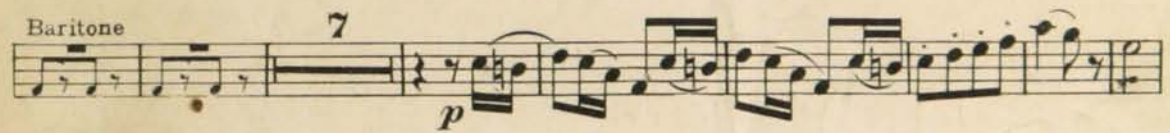




All<sup>o</sup> con brio.



Baritone



Risoluto



# 1st TROMBONE THE BRIDAL ROSE.

or Bb Tenor OVERTURE.

**Maestoso.** 2 *ff* *ff* *ff* **And<sup>no</sup>** *p* *cresc.* *f*

*ff* *ff* G.P. 10 *p* *cresc.* *f*

2 3 *f* *ff*

**All<sup>o</sup> mod<sup>to</sup>** 10 *pp* *p*

9 *ff* *p* *f* 12 *p*

*ff*

7 **And<sup>no</sup>** 18 Cl. *p* 2

*p* *mf* *pp* *rit.* 6 3

**All<sup>o</sup> con brio.** 1 *ff* *ff* *ff* *ff*

10 *p*

*ff* *f* 1

8 *p cresc.* *dim.* **Risolut<sup>o</sup>.** *ff*

1 *ff*

224200 CON

2<sup>d</sup> TROMBONE.  
or B<sup>b</sup> Tenor.

THE BRIDAL ROSE  
OVERTURE.

Maestoso. 2 2

*ff* Andte *ff*

*ff* *ff* G.P. 2 10 3 *p* *cresc.* *f*

*p* *p* *sf* *ff*

Allo *sf* *ff*

modto *pp*

9 12 *p* *ff*

*p* *f* *p*

*ff*

3 And<sup>no</sup> Alto. 2 2

*pp* 8 *p*

*pp* *p* *p* *mf*

All<sup>o</sup> con brio, *pp* *rit.*

*ff* 10 *ff* *ff* *ff*

*p* *ff*

*pp* *p* *cresc.* *dim.* *ff* Risoluto.

1 *ff*



187 E♭ Alto.

Andte

*pp* *p* *mf* *p* *dim.* *rit.* *pp*

All<sup>o</sup> con brio.

*p* *p* *ff* *pp* *f* *pp* *ff* *Risoluto.* *ff*

# THE BRIDAL ROSE.

2<sup>d</sup> E<sup>b</sup> ALTO.

OVERTURE.

C. LAVALLEE.

**Maestoso.**

*ff p ff p ff*

*ff p ff p*

*G P pp p pp*

*p cresc. p p*

*Solo. sf ff*

**All<sup>o</sup> mod<sup>to</sup>**

*p*

*ff p*

*f p*

*ff*

*3*

2nd Alto

And<sup>no</sup>

pp p p p mf dim. rit. pp

All<sup>o</sup> con brio.

p p ff p sf pp Risoluto. cresc. dim. ff



3<sup>o</sup> Allegro

7 And<sup>no</sup>

pp *s.* *s.* *p*

*p*

*mf*

4

Allo con brio. *p* *s.* *s.* *s.* *rit.* *pp*

2 *p* 2 *p* 2 *ff*

*p*

*ff*

*sf* 1. 2. *pp*

*cresc.* *ff*

*ff*

From C. LAVALLEE

MUSICAL INSTRUMENTS

THE BRILLIANT ROSE.

OVERTURE.

C. LAVALLEE.

BARITONE.

Maestoso.

ff p ff p

ff p G.P. pp p

Alto. Andte

p

f p

2d. Alto.

f ff

Allo modto

f

ffz p

1

f p

ff

And<sup>no</sup> **3** *p*

*pp*

*p*

*mf* **3** *p* **All<sup>o</sup> con brio.** *p*

*p* *ff* *p*

*rit.* *pp* **2** *p*


*ff* **1.** **2.** *pp*

*cresc.*

*Risoluto.* *dim.* *ff*

*ff*

*Sax*

BARITONE  THE BRIDAL ROSE.  
OVERTURE.

C. LAVALLEE.

Maestoso.

*ff* *p* *ff* *p*

*ff* *Alto.* *Andte* *ff* *p*

G.P. *pp* *p*

*p* *2d Alto.* *cresc.* *f*

*p* *sf*

*ff* *Allo modto* *p*

*ff* *p*

*sf*

*p*

*ff*

*ff*

*Aerex.*

*And<sup>no</sup>* 3

*pp*

*p*

*p*

1 *p* *mf*

2 *p* 3 *rit. pp*

*Allo con brio.* 2 *p* 2 *ff*

*ff* *sf*

1. *pp* 2.

*cresc.* *dim.* *ff* *Risoluto.*

*ff*

BASSES.

THE BRIDAL ROSE.  
OVERTURE.

C. LAVALLEE.

**Maestoso.** 1 1 >

**Andte**

**Allò modto** 3 4 5 2 3 4 2 3 4 2 3 4

**G.P.**

**ff** **p** **ff** **p** **ff** **p** **cresc.** **f** **ff** **p** **f** **ff** **p** **fz** **p** **ff** **p** **ff**

7 Andte

Musical staff with notes, rests, and dynamic markings *pp* and *p*.

Musical staff with notes and rests.

Musical staff with notes and rests, ending with dynamic marking *p*.

Musical staff with notes and rests, ending with dynamic marking *mf*.

Musical staff with notes and rests, ending with dynamic markings *p*, *rit.*, and *pp*.

All<sup>o</sup> con brio.

Musical staff with notes, rests, and dynamic markings *p*, *p*, and *ff*.

Musical staff with notes and rests, ending with dynamic marking *p*.

Musical staff with notes and rests, ending with dynamic marking *ff*.

Musical staff with notes and rests, ending with dynamic markings *ff* and *pp*.

Musical staff with notes and rests, ending with dynamic markings *cresc.* and *dim.*.

Risoluto.

Musical staff with notes and rests, ending with dynamic marking *ff*.

Musical staff with notes and rests, ending with dynamic marking *ff*.

# THE BRIDAL ROSE OVERTURE

OBOE

C. LAVALLEE

**Maestoso**  
122 *ff* *Andante* *ff*

*G.P.* *p* *f* *ff* *f*

**Allo Modto**  
12 *p* *f*

*p* *f*

**Andantino**  
3 13 *p*

**Allo Con Brio**  
10 10 *ff*

*ff* *p* *ff*

1 2 7 *p*

224200 CON

# THE BRIDAL ROSE

BASSOON

OVERTURE

FRANCIS & TAYLOR  
151 St. Lambert Hill, MONTREAL  
C. LAVALLEE

Maestoso

122 *ff* *p* *ff* *p* *Andante* 6

G.P. *p*

*f*

*ffz*

*Allo Modto* 12 *p*

1 *p*

8 *f* *p*

*ff*

3

Andantino 1

*p*

3

*Allò Con Brio* 10 *ff*

10 *p* *ff*

7 *p*

*ff*

Q. W. "The Bridal Rose" Jeweller

Piccolo

NEW!

NEW!

NEW!

# The Modern Method For The Boehm Flute

By **ARTHUR BROOKE**

OF THE BOSTON SYMPHONY ORCHESTRA

Professor of FLUTE at The NEW ENGLAND CONSERVATORY OF MUSIC

The most comprehensive method for Flute ever published.  
Contains numerous original exercises written with the sole purpose of showing the pupil how to overcome difficulties in intonation, mechanism, etc., and other exercises covering every possible trouble which the pupil may encounter.

The Only Method Showing How  
The Flute Should Be Blown.

PRICE,  
COMPLETE, **\$5.00**

## GRAND STUDIES FOR THE FLUTE

By **A. B. FURSTENAU**

We have the pleasure of announcing the publication of 17 Grand Studies for the Flute, composed by one of the greatest Flutists and writers of Flute music. These studies have never been published in sheet form, and for finishing purposes are considered without an equal in developing the highest perfection in Flute playing. To the advanced student these studies will be of inestimable value and a fine addition to the repertoire of every Flute player.

Price, Complete, **\$1.00**

## FLUTE DUETS

A Collection comprising Easy, Progressive and Concert Duets

SUITABLE FOR TEACHER AND PUPIL  
By **N. BOUSQUET** and **D. JUZEL**

This collection may be had in separate numbers as follows:

Six Easy Duets .....	N. Bousquet	\$0.20
Six Easy Duets .....	D. Juzel	.80
Twenty Progressive Duets .....	N. Bousquet	.90
Six Recreations .....	D. Juzel	1.00
Three Grand Concert Duets .....	N. Bousquet	.35
Two Sonatas .....	N. Bousquet	.60

The above six pieces can be had complete, neatly bound.

Price: **\$2.00.**

# THE BETTONEY-BOEHM FLUTES AND PICCOLOS



Are the Best in the World —

Used by the finest performers in every city where good Flute players are employed.

- No. 1000. Boehm flute in C, Grenadilla or Cocus wood, sterling silver keys and trimmings, gold springs, in case with cleaner and grease box. . . . . **\$135.00**
- No. 1004. Boehm piccolo, in C, (orchestra) or Db (band), conical bore, sterling silver covered keys and mountings, steel springs, plush lined case, cleaner and greasebox . . . . . **\$75.00**

High or Low Pitch, Open or Closed G-sharp

Send for Catalogs and Flute Literature.

**The CUNDY-BETTONEY CO., Boston, Mass.**

224 200 CON



And<sup>no</sup>

Musical score for the first system, measures 1-9. The key signature is one sharp (F#) and the time signature is 6/8. The score consists of five staves. The first staff has a treble clef and a 6/8 time signature. The second staff has a bass clef. The third and fourth staves have treble clefs. The fifth staff has a bass clef. The music features various dynamics including *p*, *mf*, and *pp*, and includes first and second endings. The tempo is marked *And<sup>no</sup>*.

All<sup>o</sup> con brio.

Musical score for the second system, measures 10-19. The key signature changes to two sharps (F# and C#) and the time signature changes to 2/4. The score consists of seven staves. The first staff has a treble clef. The second and third staves have bass clefs. The fourth, fifth, and sixth staves have treble clefs. The seventh staff has a bass clef. The music features various dynamics including *ff*, *p*, and *cresc.*, and includes first and second endings. The tempo is marked *All<sup>o</sup> con brio.*

# THE BRIDAL ROSE. OVERTURE.

C. LAVALLEE.

## DRUMS

Maestoso.

The musical score for Drums is written on a single staff with a common time signature (C). It begins with a **Maestoso** tempo marking. The first measure is marked with a fermata and the number 8. The score includes several dynamic markings: *ff* (fortissimo), *pp* (pianissimo), *cresc.* (crescendo), *f* (forte), *p* (piano), and *ff* (fortissimo). Performance instructions include **Andte** (Andante), **All<sup>o</sup> modto** (Allegro moderato), **All<sup>o</sup> con brio.** (Allegro con brio), and **Risoluto.** (Ritardando). The score features various drum patterns, including snare drum (Dr.), triangle (Trgle.), and cymbal (Cym) sounds. Measure numbers 8, 10, 12, 13, 14, 15, 16, 17, 18, 19, 20, 21, 22, 23, 24, 25, 26, 27, 28, 29, 30, 31, 32, 33, 34, 35, 36, 37, 38, 39, 40, 41, 42, 43, 44, 45, 46, 47, 48, 49, 50, 51, 52, 53, 54, 55, 56, 57, 58, 59, 60, 61, 62, 63, 64, 65, 66, 67, 68, 69, 70, 71, 72, 73, 74, 75, 76, 77, 78, 79, 80, 81, 82, 83, 84, 85, 86, 87, 88, 89, 90, 91, 92, 93, 94, 95, 96, 97, 98, 99, 100 are indicated. The score concludes with a **ff** dynamic marking.

W. H. Cundy Boston. Mass.

224 200 CON