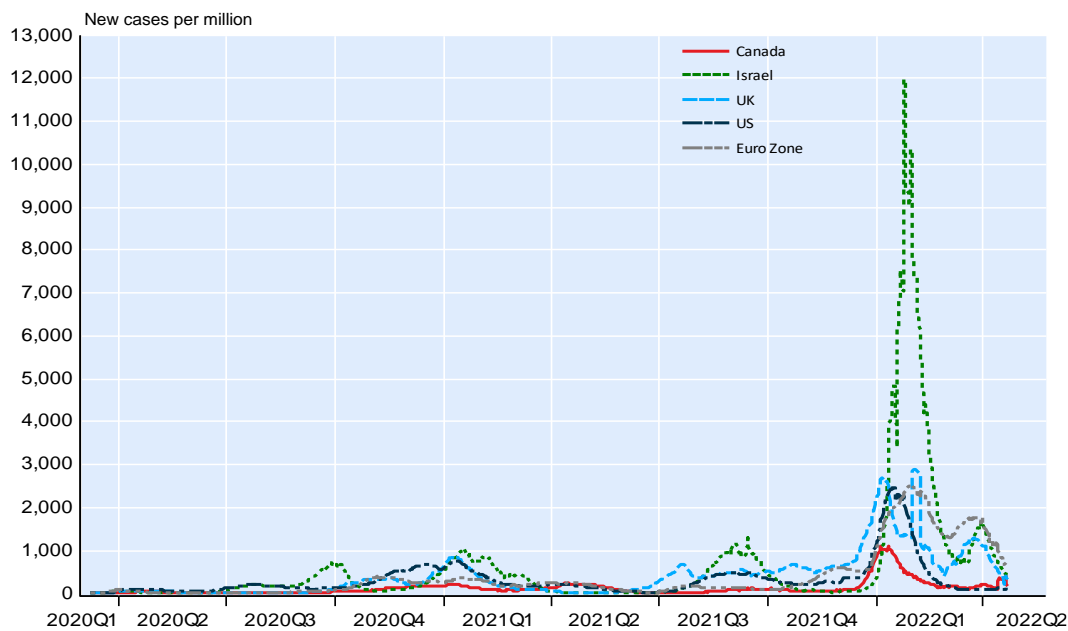


This monitor provides weekly updates on the evolution of COVID-19 in selected countries using data available as of 8:00am EDT (graphs 1-12). We also track the progression of vaccines around the world (graphs 13-17), monitor the stringency of policy related to containment restrictions and public information campaigns (graph 18), monitor the reopening of economies (graph 19-20), and offer an update of our financial conditions index for Canada (graph 21).

1. World: Evolution of the pandemic

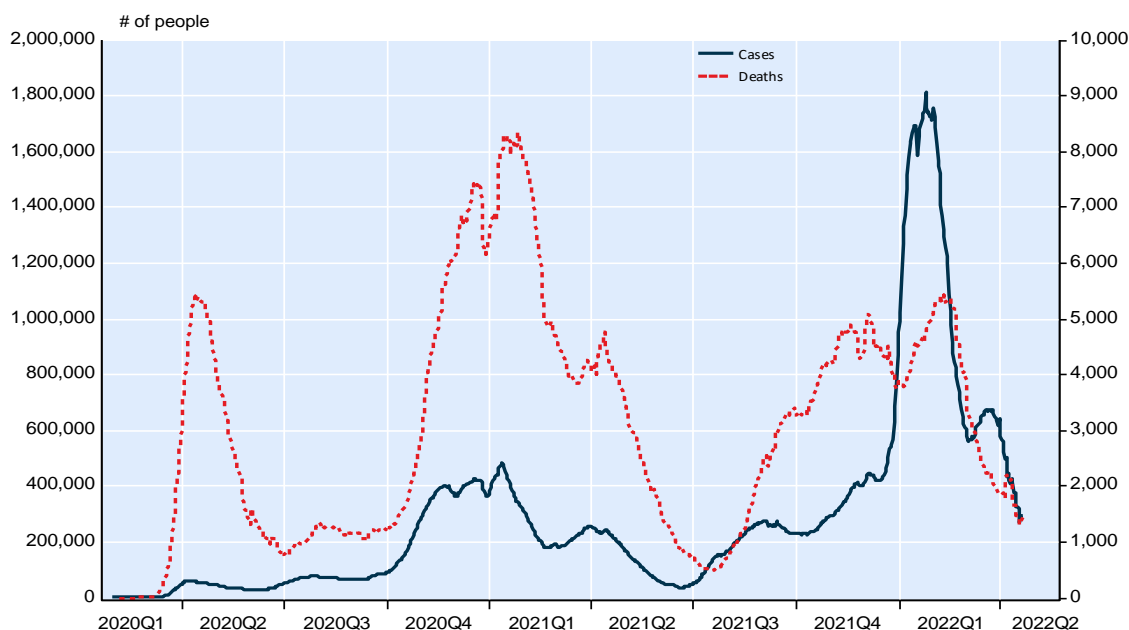
Daily new cases per million population by region, 7-day mov. average



NBF Economics and Strategy (data via Johns Hopkins CSSE)

2. Developed countries: Perspective on COVID-19 cases and deaths

New cases and new deaths in Europe and North America, 7-day mov. average

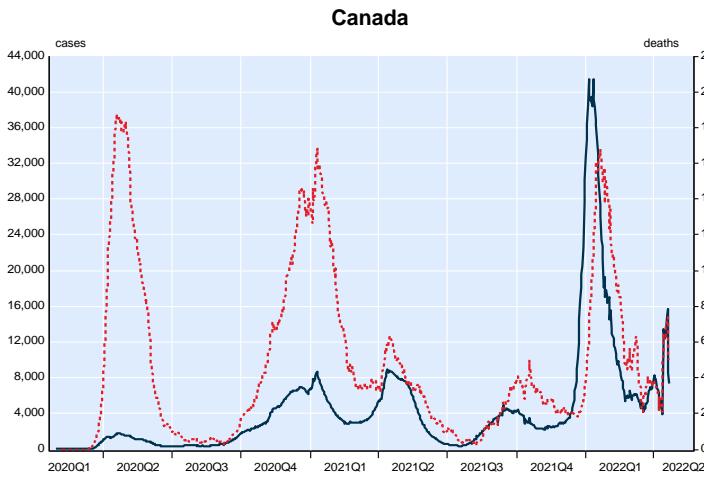


NBF Economics and Strategy (data via Johns Hopkins CSSE)

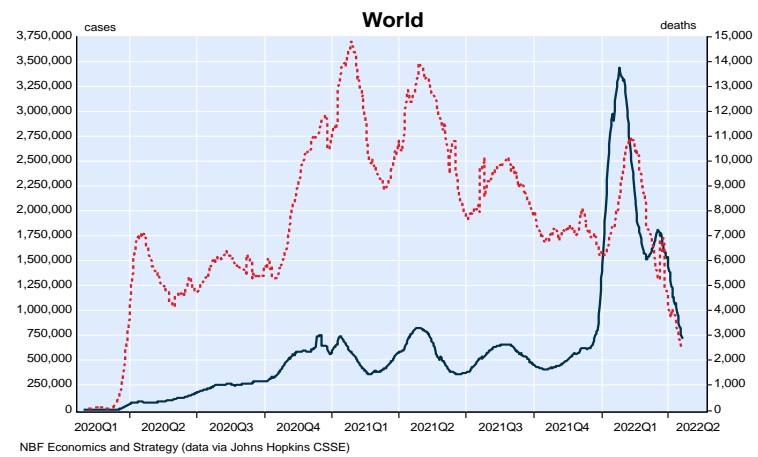
3. Evolution of the COVID-19 pandemic, selected countries

Daily change in cases and in deaths, 7 day moving average (data via Johns Hopkins CSSE)

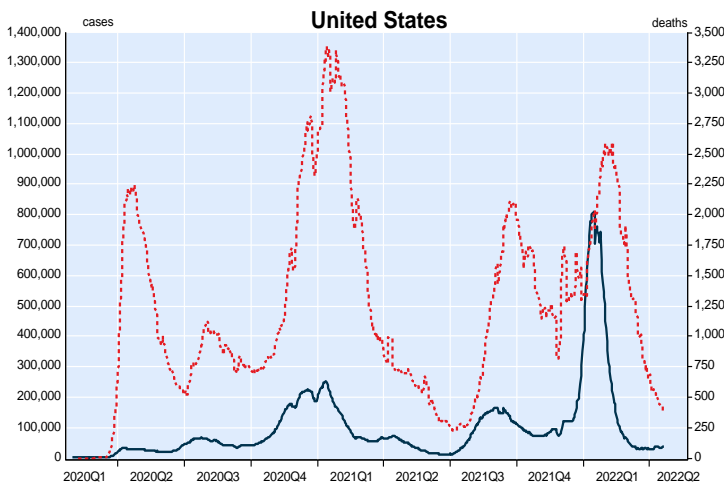
■ New cases (left axis) ■ New deaths (right axis)



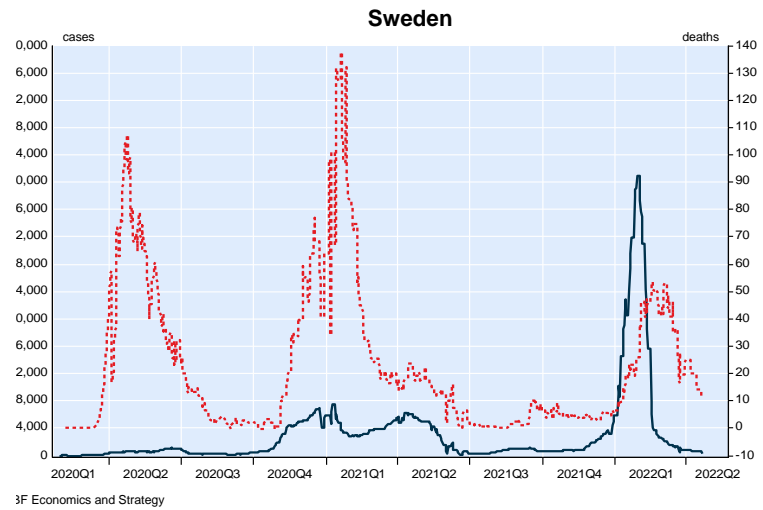
NBF Economics and Strategy



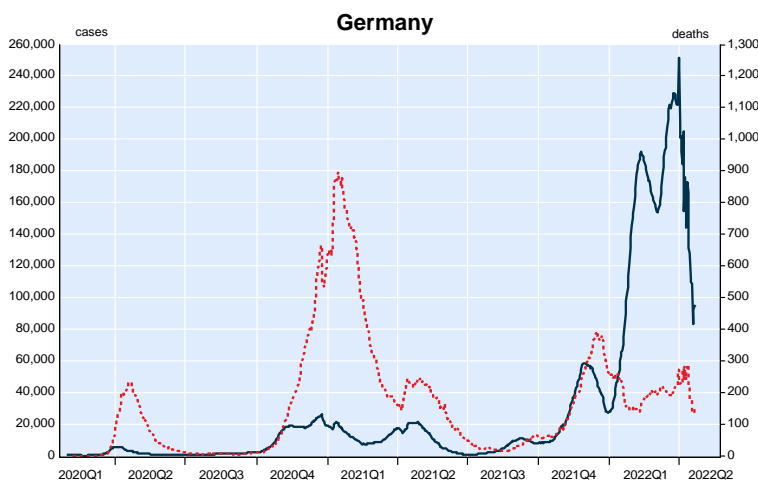
NBF Economics and Strategy (data via Johns Hopkins CSSE)



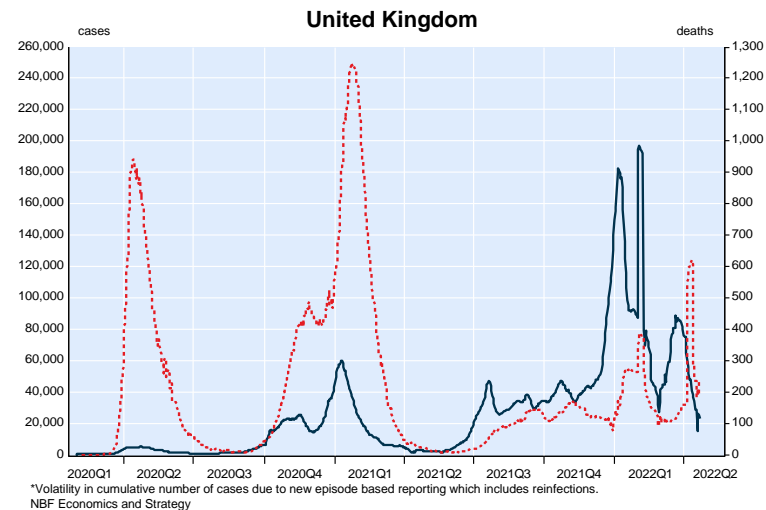
NBF Economics and Strategy



3F Economics and Strategy



NBF Economics and Strategy

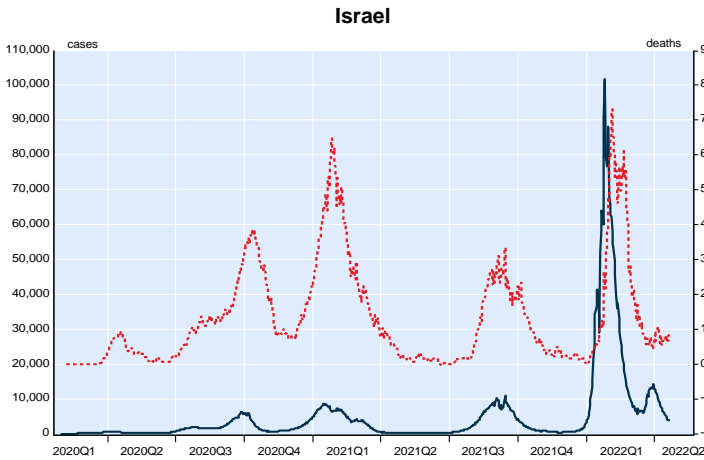


*Volatility in cumulative number of cases due to new episode based reporting which includes reinfections.
NBF Economics and Strategy

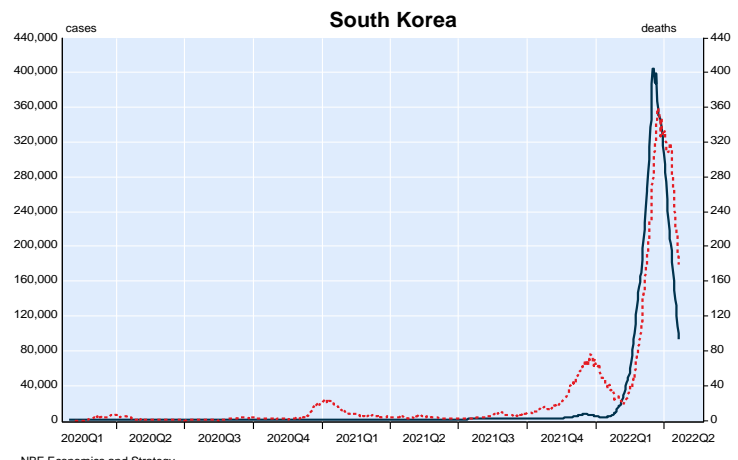
3. Evolution of the COVID-19 pandemic, selected countries (continued)

Daily change in cases and in deaths (data via Johns Hopkins CSSE)

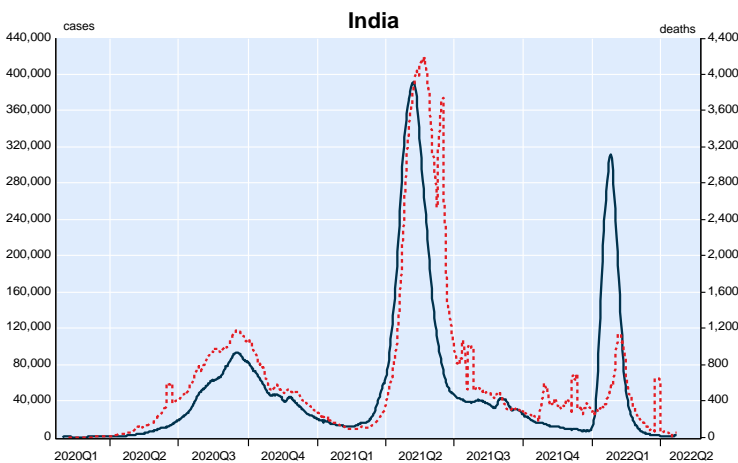
■ New cases (left axis) ■ New deaths (right axis)



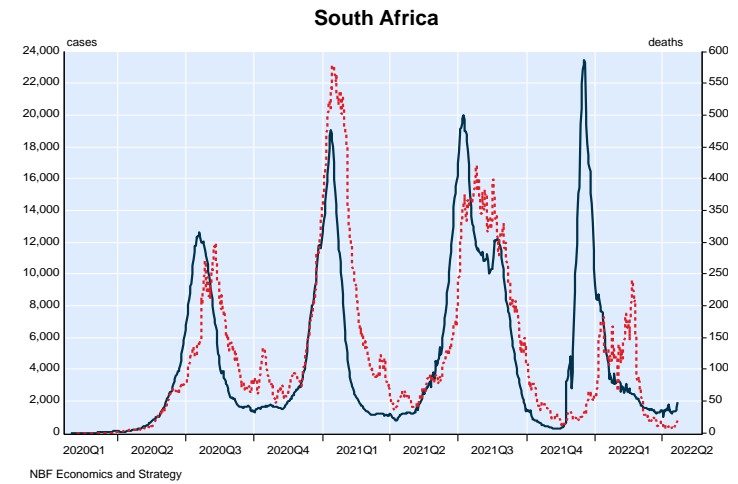
NBF Economics and Strategy



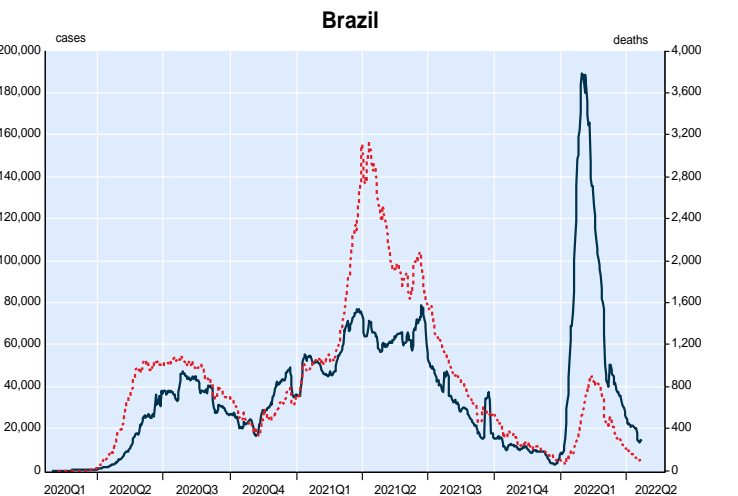
NBF Economics and Strategy



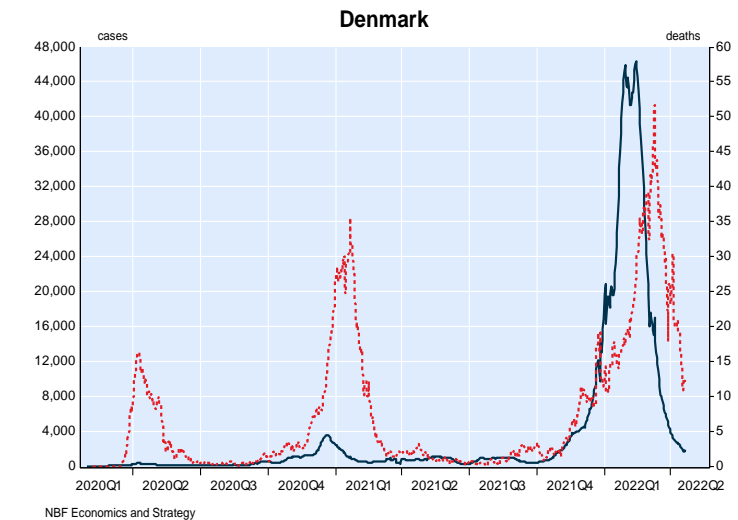
NBF Economics and Strategy



NBF Economics and Strategy



NBF Economics and Strategy



NBF Economics and Strategy

4. World, cases per million population, selected countries

	Total cases per million population since start of the pandemic	Average new daily cases per million population										Last 7 days	7 days vs 28 days trend
		Q2 2020	Q3 2020	Q4 2020	Q1 2021	Q2 2021	Q3 2021	Q4 2021	Q1 2022	Last 28 days			
South Korea	327 087	1	2	8	9	12	33	68	147	3899	1813	↓	
Australia	222 725	1	8	1	0	1	33	137	1820	2030	1726	↓	
France	419 823	24	64	340	340	185	190	487	2586	1854	1370	↓	
Finland	180 852	12	5	51	83	36	90	253	1225	1074	1314	↑	
Germany	287 442	16	13	189	146	117	66	384	1840	1886	1141	↓	
Italy	263 162	24	13	322	271	123	74	261	1567	1051	947	↓	
Austria	456 098	9	33	384	230	128	112	650	3170	1824	915	↓	
Portugal	368 725	37	36	359	443	62	202	341	2356	1089	714	↓	
Belgium	348 019	46	54	497	227	193	151	810	1657	757	530	↓	
Switzerland	418 677	19	27	505	192	130	174	623	2815	809	470	↓	
Israel	475 136	25	283	224	535	11	562	130	3324	963	419	↓	
United Kingdom	322 740	40	27	326	304	74	481	822	1346	682	341	↓	
Japan	59 367	1	6	13	21	28	78	2	423	364	334	↓	
Vietnam	109 195	0	0	0	0	2	87	106	902	716	315	↓	
Denmark	538 120	19	29	255	129	120	123	835	201	475	294	↓	
Spain	251 126	36	121	270	322	123	267	311	1253	274	228	↓	
Canada	96 821	28	16	121	118	125	60	160	372	229	193	↓	
Netherlands	474 766	24	45	430	309	265	202	718	3135	767	180	↓	
Chile	186 727	160	105	84	227	325	56	87	983	212	124	↓	
United States	245 400	82	151	427	350	107	322	372	860	104	119	↑	
Norway	264 470	9	10	72	96	72	117	414	2110	196	100	↓	
Hong Kong	161 422	16	13	189	146	117	66	384	1720	476	96	↓	
Brazil	143 713	73	176	148	267	302	148	44	406	94	65	↓	
Turkey	179 920	25	15	246	148	278	225	303	722	107	47	↓	
Sweden	247 383	69	27	371	404	310	68	174	1298	59	34	↓	
South Africa	64 053	28	97	71	93	80	172	103	50	25	33	↑	
China (exc. Hong Kong)	507	0	0	0	0	0	0	0	1	14	21	↑	
Ecuador	49 912	19	29	255	129	120	123	835	4385	24	13	↓	
Mexico	44 927	19	44	58	71	24	98	27	2733	26	7	↓	
Bolivia	78 538	32	96	23	108	160	57	94	295	11	5	↓	
Argentina	202 339	16	167	212	179	521	191	96	848	32	5	↓	
Colombia	120 990	21	158	176	169	400	155	43	207	6	4	↓	
India	31 508	16	13	189	146	117	66	384	73	1	1	↑	
Cambodia	8 258	0	0	0	1	32	41	5	10	2	1	↓	

Data via Johns Hopkins CSSE

*France : correction on May 20th of 349 116 duplicated cases.

[Des indicateurs plus précis pour le suivi des cas confirmés de Covid-19 \(santepubliquefrance.fr\)](https://www.santepubliquefrance.fr/)

5. World, deaths per million population, selected countries

	Total deaths per million population since start of the pandemic	Average new daily deaths per million population										Last 7 days	7 days vs 28 days trend
		Q2 2020	Q3 2020	Q4 2020	Q1 2021	Q2 2021	Q3 2021	Q4 2021	Q1 2022	Last 28 days			
Hong Kong	1203	0.1	0.3	0.5	0.8	0.7	3.4	0.1	11.3	19.7	9.4	↓	
South Korea	397	3.3	0.2	3.2	3.3	0.8	0.3	1.8	2.3	6.2	5.5	↓	
United Kingdom	2520	0.0	0.0	0.0	0.0	0.0	2.2	1.5	2.7	4.1	4.1	↑	
Austria	1823	0.7	0.1	6.6	3.9	1.7	0.4	3.3	2.6	4.1	3.6	↓	
Denmark	1030	1.0	0.1	1.2	2.2	0.2	0.2	1.2	1.1	4.3	3.3	↓	
Norway	517	0.5	2.6	2.2	4.6	1.5	5.0	0.7	2.5	6.4	3.1	↓	
Germany	1589	0.1	0.6	0.4	0.1	1.9	0.4	0.3	3.1	2.8	2.8	↑	
Italy	2662	0.0	0.0	0.1	0.2	0.1	0.1	0.7	3.0	2.3	2.2	↓	
Portugal	2148	4.7	0.8	4.4	5.9	1.3	1.3	0.7	2.8	2.2	2.2	↑	
Belgium	2693	8.6	0.3	9.0	3.4	2.1	0.4	2.6	2.4	1.8	2.1	↑	
Chile	3013	3.3	4.0	2.2	3.8	5.5	2.8	0.9	10.3	24.6	2.1	↓	
Sweden	1832	0.6	0.4	1.7	1.4	2.4	1.9	2.4	3.2	2.0	2.0	↓	
France	2159	1.1	0.1	3.2	5.7	1.9	0.4	2.4	2.3	1.7	1.9	↑	
United States	2997	0.0	0.0	0.0	0.0	0.0	2.2	1.5	5.2	2.0	1.5	↓	
Canada	1005	2.5	0.2	1.8	2.1	1.0	0.5	0.7	2.1	1.0	1.4	↑	
Australia	266	0.0	0.3	0.0	0.0	0.0	0.2	0.4	1.7	1.5	1.1	↓	
Spain	2206	1.7	0.1	7.5	3.1	0.6	0.4	1.4	3.1	1.3	1.1	↓	
Israel	1244	0.1	0.1	0.2	0.5	0.5	0.2	0.1	4.0	0.8	0.8	↓	
Finland	603	4.4	0.3	5.4	5.3	2.5	0.7	1.1	2.8	3.7	0.7	↓	
Netherlands	1296	1.5	0.4	5.2	10.8	0.3	0.9	1.0	0.7	0.8	0.7	↓	
Brazil	3136	3.1	4.3	2.6	6.7	10.2	4.1	1.1	2.2	1.0	0.6	↓	
Ecuador	2044	0.6	0.0	0.4	0.6	0.2	0.2	1.2	4.7	0.3	0.5	↑	
Mexico	2538	0.4	0.0	0.3	0.5	0.2	0.1	0.9	2.1	0.7	0.5	↓	
Argentina	2865	0.3	3.8	6.4	3.1	9.4	5.1	0.5	2.7	0.8	0.4	↓	
Japan	227	2.4	4.2	4.1	6.7	2.6	3.8	1.9	0.9	0.6	0.4	↓	
Turkey	1181	6.1	0.3	5.0	8.7	0.2	1.4	1.9	2.1	0.7	0.4	↓	
Switzerland	1585	0.3	0.8	3.7	3.8	5.0	1.3	10.4	1.8	1.3	0.3	↓	
Vietnam	445	0.0	0.0	0.0	0.0	0.0	2.2	1.5	1.2	0.5	0.2	↓	
South Africa	1710	5.4	0.6	3.1	5.2	1.3	0.3	0.5	1.7	0.2	0.2	↓	
Indonesia	576	4.1	0.2	6.9	6.5	3.3	0.6	1.2	0.5	0.4	0.1	↓	
Colombia	2776	0.7	4.9	3.7	4.5	9.4	4.3	0.8	2.2	0.3	0.1	↓	
Bolivia	1902	1.1	6.5	1.1	3.0	4.3	1.9	0.9	2.2	1.3	0.0	↓	
India	382	0.4	1.6	2.2	3.8	0.3	1.7	0.6	0.3	0.1	0.0	↓	
Cambodia	185	0.0	0.0	0.0	0.0	0.4	1.1	0.5	0.0	0.0	0.0	↓	
China (exc. Hong Kong)	3	0.0	0.0	0.0	0.0	0.0	0.0	0.0	0.0	0.0	0.0	↓	

Data via Johns Hopkins University (CSSE)

6. United States, cases per million population

	Total cases per million population since start of the pandemic	Average new daily cases per million population								Last 28 days	Last 7 days	7 days vs 28 days trend
		Q2 2020	Q3 2020	Q4 2020	Q1 2021	Q2 2021	Q3 2021	Q4 2021	Q1 2022			
Vermont	194 223	16	9	99	211	90	161	536	937	316	424	↑
New York	262 423	181	37	289	511	137	174	589	873	241	319	↑
Rhode Island	347 287	169	81	648	518	159	203	603	1377	266	317	↑
Alaska	343 801	15	114	567	241	126	645	632	1383	277	298	↑
Massachusetts	251 833	151	44	383	420	119	161	518	907	232	293	↑
Colorado	238 515	57	71	497	247	183	214	487	811	218	252	↑
Connecticut	210 547	134	34	391	389	119	125	365	712	169	248	↑
New Jersey	251 946	190	47	390	475	142	161	501	802	183	226	↑
Maine	179 472	24	17	152	217	151	169	459	743	182	225	↑
New Hampshire	225 859	44	20	293	321	124	166	627	857	142	208	↑
Illinois	245 445	119	131	573	247	128	202	448	813	142	205	↑
Hawaii	173 063	6	90	72	69	54	318	259	1015	137	175	↑
Delaware	267 948	126	102	411	426	169	259	529	914	70	165	↑
Oregon	169 195	21	64	207	135	114	313	235	753	94	152	↑
Michigan	241 464	69	73	425	242	279	163	610	762	105	150	↑
Wisconsin	274 820	51	175	743	221	78	247	580	896	109	149	↑
Washington	194 298	40	80	225	172	126	294	273	894	144	146	↑
Virginia	256 479	83	125	345	424	108	335	432	947	117	145	↑
Minnesota	255 761	70	121	609	205	167	204	600	811	99	143	↑
Maryland	169 361	120	103	273	248	93	126	339	540	84	123	↑
North Carolina	252 444	69	149	341	397	104	395	302	966	84	115	↑
Pennsylvania	218 980	73	62	411	335	164	185	503	653	73	105	↑
Kentucky	296 374	37	129	478	402	94	550	401	1147	138	97	↓
Texas	234 578	61	230	373	391	79	400	198	818	104	86	↓
Ohio	229 986	47	95	508	302	88	281	560	628	57	84	↑
Oklahoma	262 524	37	202	560	417	50	428	261	916	66	83	↑
California	232 204	65	160	431	378	43	237	213	1018	78	79	↑
New Mexico	248 388	62	90	588	259	73	246	503	899	64	78	↑
West Virginia	278 782	17	79	421	350	137	463	532	1063	50	67	↑
Nevada	230 621	62	217	511	285	107	309	223	810	55	57	↑
Utah	290 259	73	172	690	378	101	317	436	1019	38	53	↑
Tennessee	296 709	66	243	622	366	89	575	293	959	38	51	↑
Iowa	241 353	100	207	663	245	78	269	425	652	39	50	↑
Kansas	265 219	53	174	612	300	57	338	412	966	29	50	↑
Montana	255 818	8	123	696	239	95	379	475	787	35	48	↑
Arizona	277 408	118	208	451	491	80	297	430	950	109	47	↓
Indiana	251 884	71	120	632	289	110	340	456	741	31	46	↑
Georgia	236 325	80	242	357	411	78	455	267	695	81	44	↓
South Carolina	285 915	75	235	337	527	96	550	249	1075	35	42	↑
North Dakota	315 716	50	261	1008	154	110	306	599	1009	43	40	↓
Alabama	264 905	84	258	458	349	80	544	222	913	48	36	↓
Wyoming	270 220	26	84	722	228	114	532	470	786	25	33	↑
Louisiana	251 987	125	256	346	310	86	606	206	821	28	33	↑
Arkansas	276 592	74	227	509	388	69	528	254	992	30	31	↑
Nebraska	247 524	108	148	681	244	86	236	403	811	30	29	↓
Idaho	249 207	34	219	602	245	89	379	377	783	37	27	↓
South Dakota	268 505	83	192	943	234	84	252	420	735	23	27	↑
Missouri	231 292	37	192	549	255	79	354	333	737	35	25	↓
Mississippi	267 708	97	259	430	334	61	609	202	946	33	23	↓

Data via Johns Hopkins CSSE

7. United States, deaths per million population

	Total deaths per million population since start of the pandemic	Average new daily deaths per million population								Last 28 days	Last 7 days	7 days vs 28 days trend
		Q2 2020	Q3 2020	Q4 2020	Q1 2021	Q2 2021	Q3 2021	Q4 2021	Q1 2022			
Nevada	3 469	1.7	3.9	5.4	7.7	1.5	5.2	4.5	7.0	7.6	8.5	↑
Kentucky	3 434	1.4	1.5	3.5	8.6	2.8	3.8	8.1	6.1	5.5	3.3	↓
Oklahoma	3 997	1.0	1.8	4.0	6.9	6.8	4.3	9.5	5.6	3.9	2.9	↓
Virginia	3 157	2.4	2.2	3.6	8.5	1.8	2.7	5.7	7.3	2.8	2.8	↓
Alaska	1 706	0.2	0.6	2.2	1.6	1.0	3.0	6.0	3.8	1.3	2.5	↑
West Virginia	3 807	0.6	1.6	6.0	8.3	1.3	4.7	10.1	9.3	2.7	2.5	↓
Georgia	3 547	2.8	4.3	4.0	8.5	2.5	4.8	5.5	5.7	3.2	2.5	↓
New Mexico	3 546	2.6	2.0	8.3	7.7	2.1	2.4	5.5	7.2	4.1	2.5	↓
Delaware	2 974	6.4	1.0	4.6	5.7	1.5	2.9	3.7	5.1	2.2	1.8	↓
Oregon	1 773	0.5	0.9	2.4	2.4	1.0	2.6	4.8	4.0	3.8	1.7	↓
Hawaii	994	0.1	0.9	1.2	1.4	0.4	2.0	2.4	2.6	0.9	1.7	↑
Iowa	3 014	2.5	2.2	8.7	6.5	1.4	1.5	4.5	5.3	1.2	1.6	↑
Alabama	3 983	2.1	3.5	5.1	13.0	1.8	6.5	4.8	6.5	2.6	1.6	↓
Arkansas	3 766	1.0	4.0	8.3	7.2	1.0	6.4	5.2	7.7	2.4	1.6	↓
Colorado	2 094	3.1	0.7	5.2	2.5	1.3	1.4	5.1	8.4	0.7	1.5	↑
Wyoming	3 122	0.4	0.6	7.3	5.0	0.9	4.7	10.0	5.1	1.5	1.5	↓
Pennsylvania	3 482	5.7	1.2	6.7	7.9	2.2	1.5	6.2	6.6	1.2	1.3	↑
Ohio	3 282	2.4	1.7	8.5	5.4	1.2	2.8	7.6	5.8	0.4	1.1	↑
Washington	1 661	1.6	1.1	1.9	2.6	1.0	2.6	3.0	3.9	1.2	1.1	↓
Kansas	2 926	1.0	1.5	7.7	8.2	0.9	3.4	3.5	4.1	4.0	1.1	↓
Michigan	3 598	6.5	1.0	6.5	4.6	4.3	1.5	7.3	3.9	1.4	1.1	↓
California	2 274	1.6	2.7	2.8	9.1	1.4	1.6	2.1	3.5	1.2	1.1	↓
Massachusetts	2 933	12.7	2.2	4.7	7.7	1.3	1.0	2.6	7.3	0.8	1.0	↑
South Carolina	3 444	1.5	5.6	4.0	8.3	1.4	5.6	4.6	6.4	1.7	1.0	↓
Florida	3 436	1.7	5.5	3.7	6.1	2.2	8.7	3.8	6.5	1.4	0.9	↓
Minnesota	2 259	2.9	1.2	6.3	3.0	1.5	1.1	4.6	7.5	1.0	0.9	↓
New Hampshire	1 818	3.0	0.5	2.6	3.9	1.1	0.9	3.8	5.0	0.7	0.8	↑
Louisiana	3 704	7.0	5.4	4.6	6.3	1.4	7.5	2.4	4.7	1.2	0.8	↓
New York	3 506	16.5	0.7	2.6	7.0	1.9	1.1	2.3	4.9	0.6	0.8	↑
Texas	3 033	1.0	5.0	4.4	7.7	1.5	4.8	4.0	4.5	1.0	0.7	↓
Vermont	1 003	0.8	0.0	1.4	1.6	0.5	1.1	2.7	2.6	0.6	0.7	↑
Connecticut	3 037	13.1	0.6	4.5	5.9	1.2	1.1	1.6	3.3	0.8	0.7	↓
Rhode Island	3 334	10.0	1.5	8.3	7.2	1.2	1.1	2.3	4.8	3.3	0.7	↓
New Jersey	3 756	18.1	1.3	3.6	6.9	2.3	1.2	2.0	5.7	0.7	0.7	↓
Illinois	2 840	5.9	1.7	7.8	4.9	1.8	1.5	2.4	4.9	0.7	0.6	↓
Arizona	4 101	2.4	6.0	4.8	12.4	1.5	3.1	6.3	7.8	4.8	0.6	↓
Idaho	2 752	0.5	2.3	5.9	3.3	1.2	4.6	7.6	4.0	1.1	0.6	↓
Indiana	3 496	4.0	1.7	9.3	6.0	1.3	2.9	5.5	7.5	1.0	0.6	↓
Maryland	2 385	5.8	1.4	3.5	4.4	2.6	1.3	2.4	7.2	0.6	0.5	↓
Mississippi	4 177	3.9	6.9	6.6	8.4	1.4	8.0	3.1	-0.3	0.8	0.5	↓
South Dakota	3 279	1.1	1.6	15.5	5.6	1.2	1.3	4.2	5.0	0.8	0.5	↓
Wisconsin	2 474	1.5	1.1	7.2	4.0	1.5	1.4	4.3	6.0	1.6	0.5	↓
North Carolina	2 228	1.4	2.2	3.3	5.7	1.4	3.2	3.0	4.5	0.7	0.4	↓
Missouri	3 291	1.8	1.9	6.4	5.7	1.6	4.0	7.5	4.8	0.9	0.3	↓
Nebraska	2 169	1.5	1.1	6.6	3.0	0.5	3.2	2.8	5.2	2.6	0.3	↓
Montana	3 052	0.2	1.6	7.9	4.9	2.3	3.5	9.1	5.6	0.7	0.3	↓

Data via Johns Hopkins CSSE

8. Canada, cases per million population

	Total cases per million population since start of the pandemic	Average new daily cases per million population										Last 7 days	7 days vs 28 days trend
		Q2 2020	Q3 2020	Q4 2020	Q1 2021	Q2 2021	Q3 2021	Q4 2021	Q1 2022	Last 28 days			
Prince Edward Island	203 803	0	2	2	5	3	6	41	1753	2055	1725	↓	
Nova Scotia	82 106	10	0	4	3	46	9	123	425	934	1095	↑	
New Brunswick	75 201	1	0	6	14	10	26	140	488	625	540	↓	
Quebec	119 696	65	26	164	138	81	44	245	474	313	269	↓	
Newfoundland	82 606	2	0	2	13	8	8	50	716	505	237	↓	
Ontario	83 451	26	13	98	128	146	31	126	307	204	199	↓	
Alberta	126 300	18	24	202	120	208	163	146	465	180	196	↑	
Manitoba	101 116	2	13	179	76	176	34	155	447	122	124	↑	
Saskatchewan	114 702	6	10	124	172	142	170	165	437	126	108	↓	
British Columbia	70 135	4	13	90	104	102	82	145	221	43	56	↑	

Data via https://health-infobase.canada.ca/covid-19/epidemiological-summary-covid-19-cases.html?stat=num&measure=total_last7&map=pt#a2, Statistics

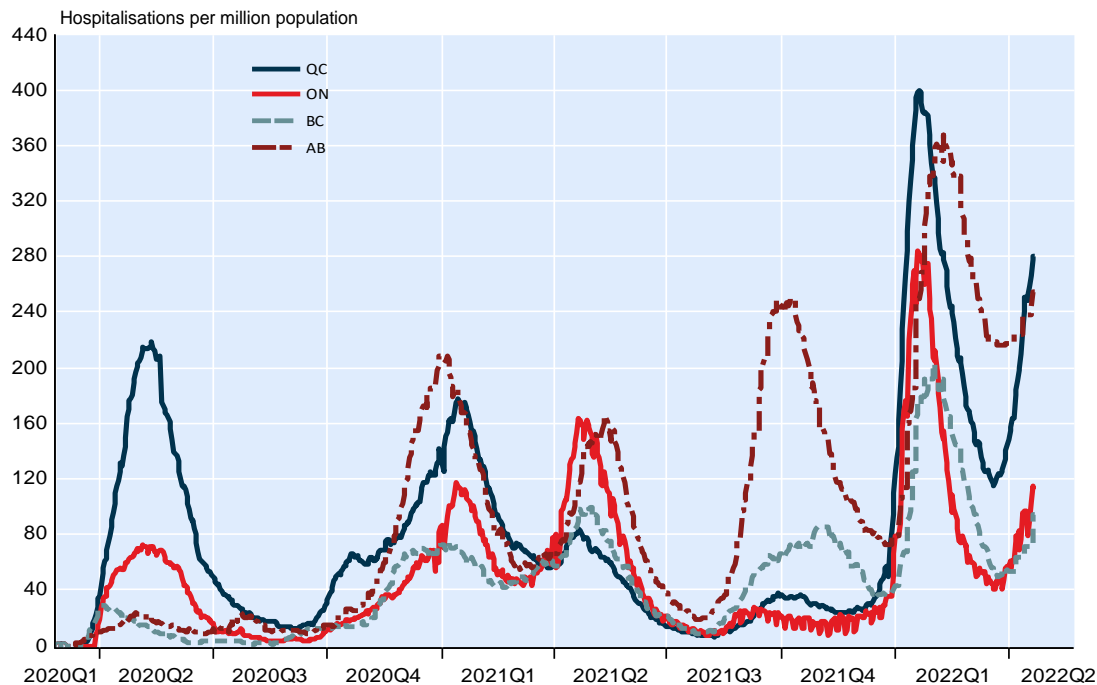
9. Canada, deaths per million population

	Total deaths per million population since start of the pandemic	Average new daily deaths per million population										Last 7 days	7 days vs 28 days trend
		Q2 2020	Q3 2020	Q4 2020	Q1 2021	Q2 2021	Q3 2021	Q4 2021	Q1 2022	Last 28 days			
Newfoundland	291	0.0	0.0	0.0	0.0	0.0	0.0	0.2	1.8	4.1	4.1	↑	
Saskatchewan	1 099	0.1	0.1	1.2	2.6	1.2	1.2	2.4	2.4	2.6	2.7	↑	
Quebec	1 723	7.1	0.3	3.1	3.0	0.7	0.2	0.4	3.4	2.0	2.7	↑	
Nova Scotia	296	0.7	0.0	0.0	0.0	0.3	0.1	0.2	1.2	1.6	1.9	↑	
New Brunswick	484	0.0	0.0	0.1	0.3	0.2	0.2	1.4	2.7	1.9	1.8	↓	
Prince Edward Island	144	0.0	0.0	0.0	0.0	0.0	0.0	0.0	1.3	1.6	1.8	↑	
Alberta	948	0.4	0.3	1.9	2.4	0.8	1.0	1.5	1.9	1.2	1.6	↑	
Manitoba	1 286	0.0	0.1	5.1	2.2	1.6	0.6	1.4	2.8	0.9	1.6	↑	
British Columbia	598	0.3	0.1	1.4	1.2	0.6	0.4	1.0	1.2	0.7	1.1	↑	
Ontario	744	2.0	0.1	1.2	2.1	1.3	0.5	0.3	1.7	0.0	0.7	↓	

Data via https://health-infobase.canada.ca/covid-19/epidemiological-summary-covid-19-cases.html?stat=num&measure=total_last7&map=pt#a2, Statistics

10. Canada: Hospitalized persons positive for COVID-19

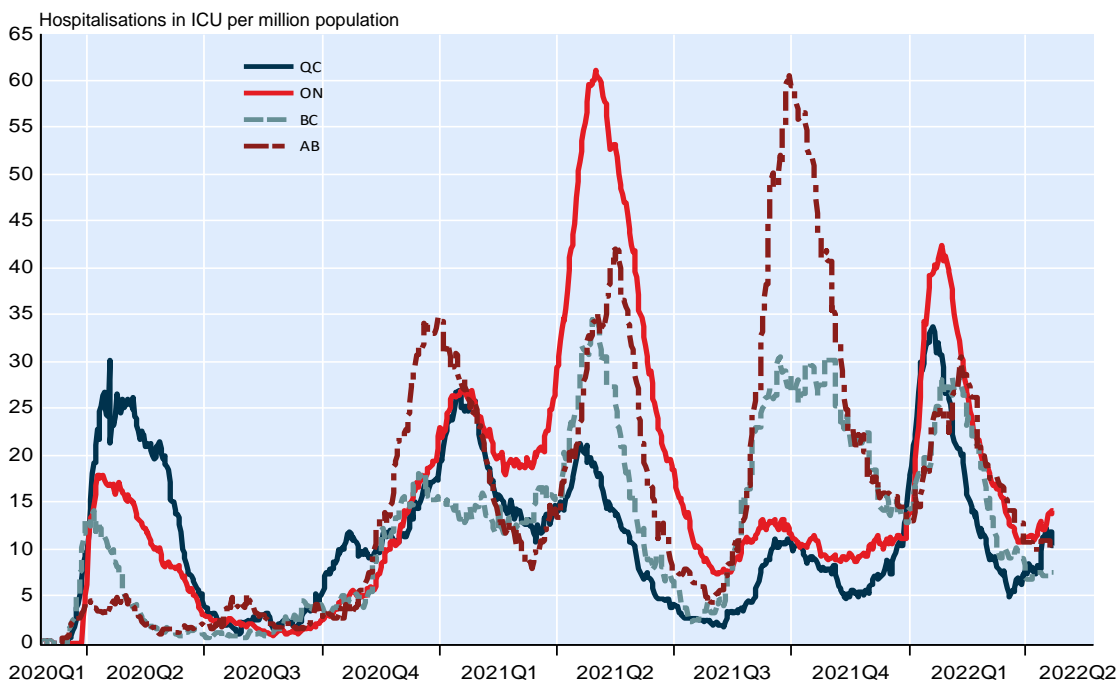
Hospitalisations per million population including intensive care



NBF Economics and Strategy (data via INSPQ, Radio Canada <https://ici.radio-canada.ca/info/2020/coronavirus-covid-19-pandemie-cas-carte-maladie-symptomes-propagation/>)

11. Canada: Current hospitalisations in ICU related to COVID-19

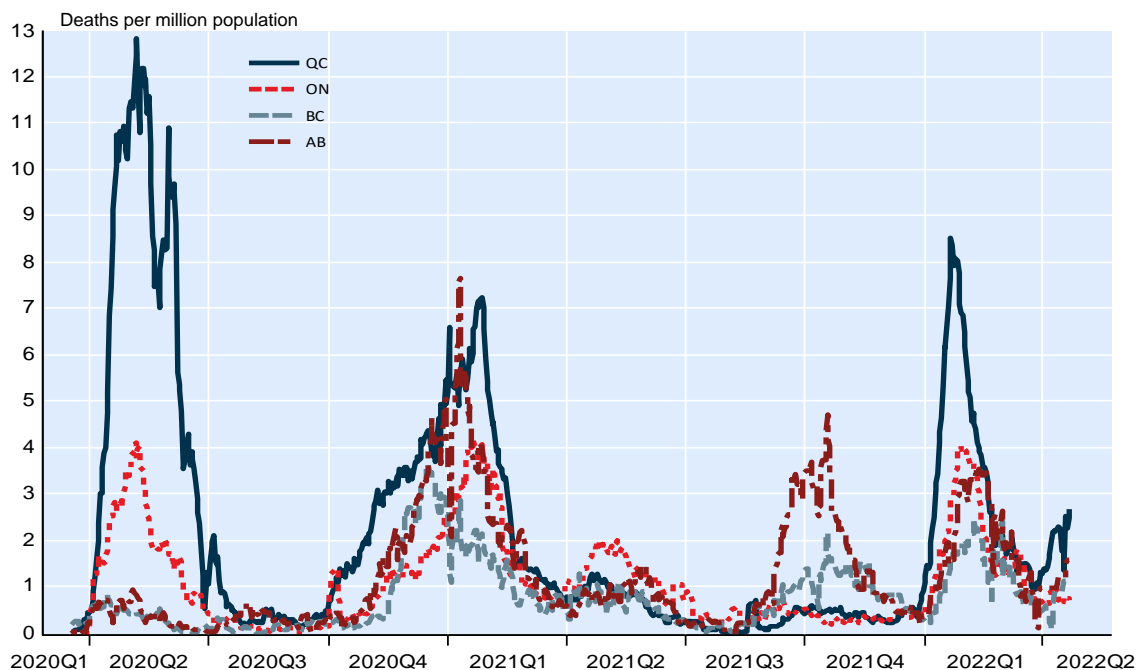
People in intensive care per million population



NBF Economics and Strategy (data via INSPQ, Radio Canada <https://ici.radio-canada.ca/info/2020/coronavirus-covid-19-pandemie-cas-carte-maladie-symptomes-propagation/>)

12. Canada: Deaths of people positive to COVID-19

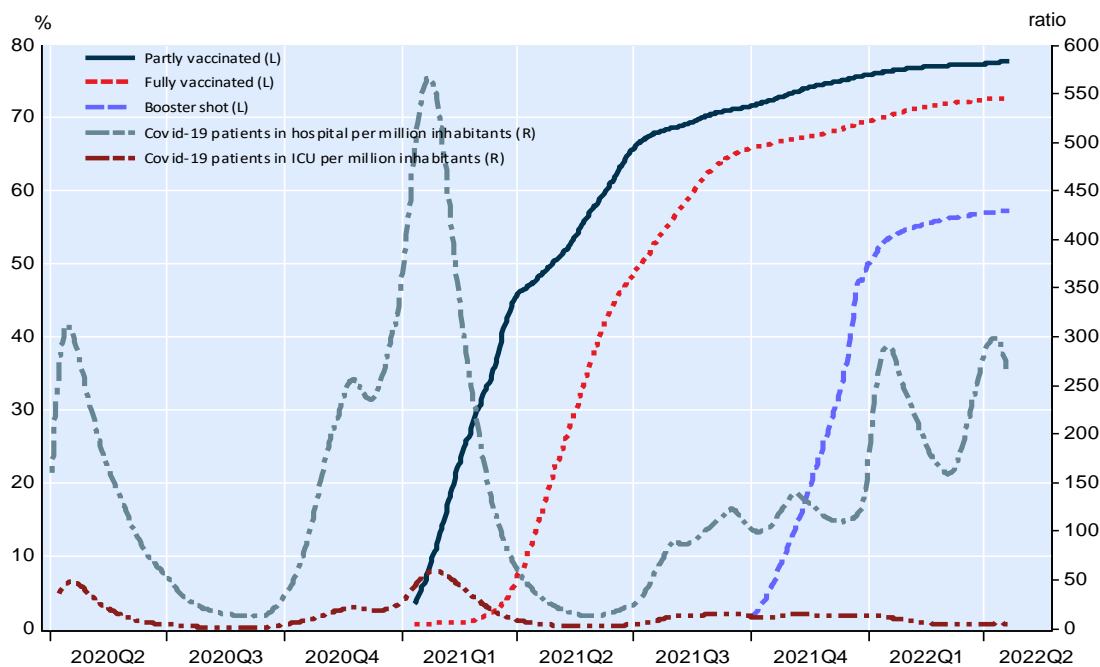
Deaths per million population, 7 day moving average



NBF Economics and Strategy (data via <https://health-infobase.canada.ca/covid-19/epidemiological-summary-covid-19->

13. UK: Vaccination, Covid-19 hospitalisations and ICU

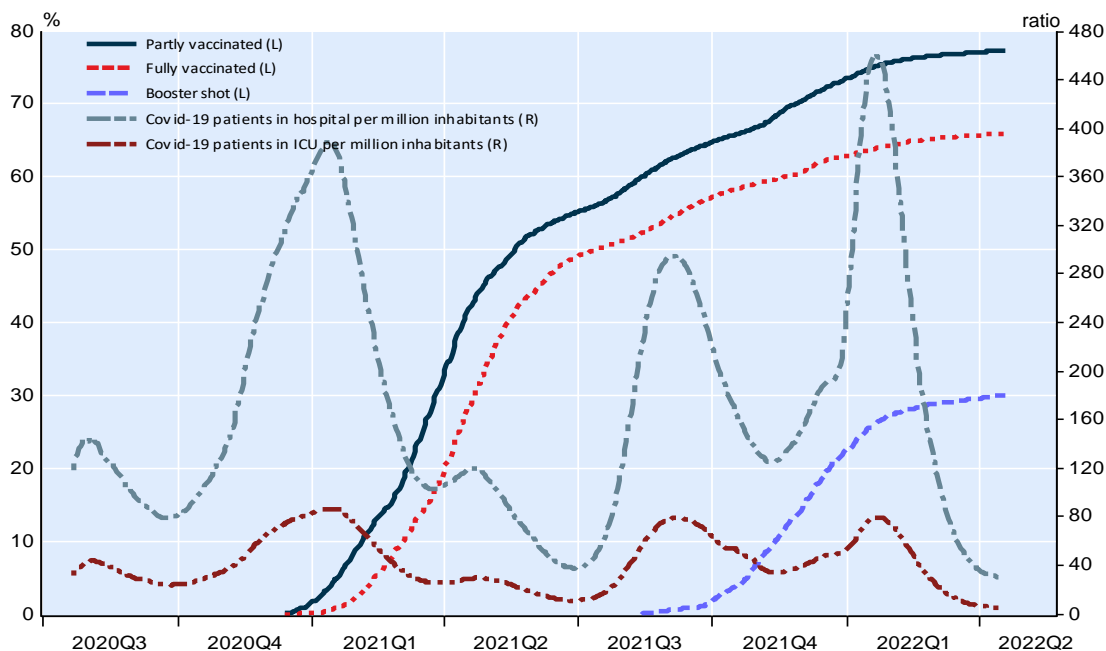
Population vaccinated, current patients in hospital and ICU per million inhabitants, 7-day moving average



NBF Economics and Strategy (<https://ourworldindata.org/covid-vaccinations>)

14. US: Vaccination, Covid-19 hospitalisations and ICU

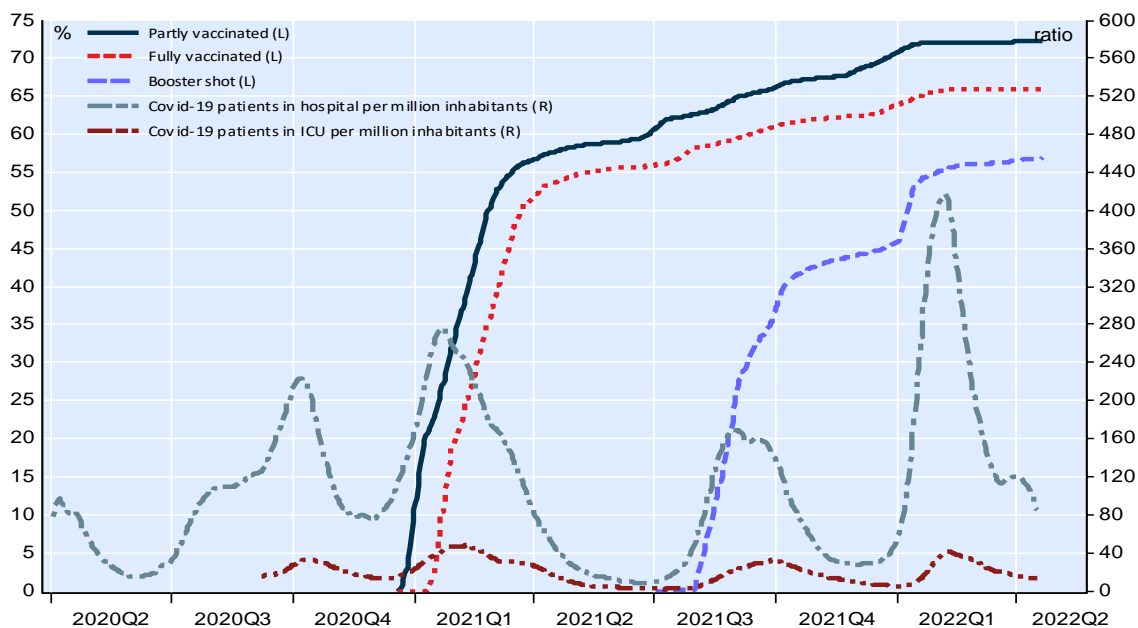
Population vaccinated, current patients in hospital and ICU per million inhabitants, 7-day moving average



NBF Economics and Strategy (<https://ourworldindata.org/covid-vaccinations>)

15. Israel: Vaccination, Covid-19 hospitalisations and ICU

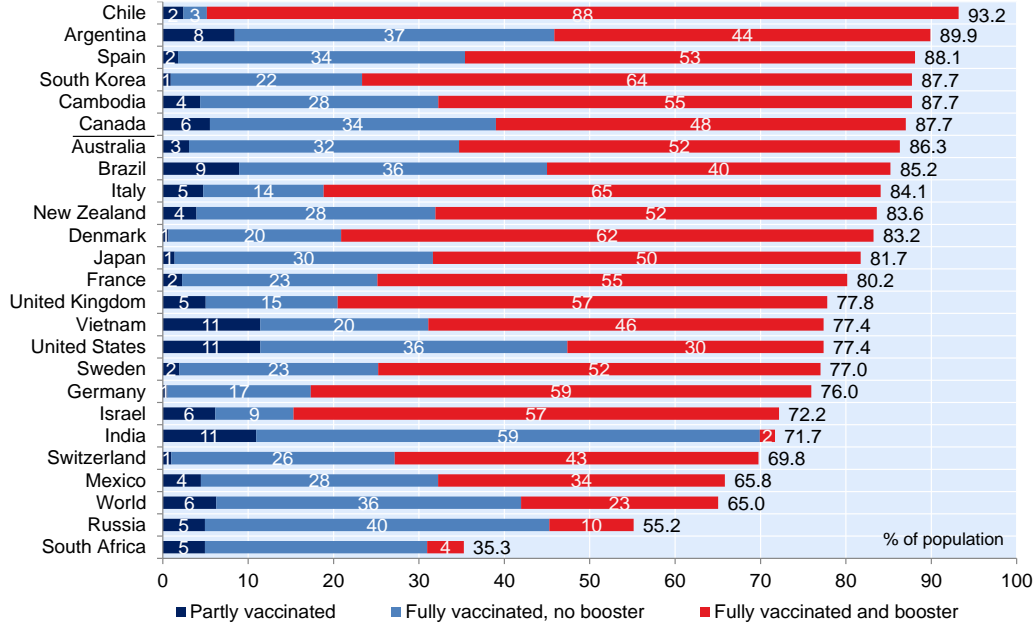
Population vaccinated, current patients in hospital and ICU per million inhabitants, 7-day moving average



NBF Economics and Strategy (<https://ourworldindata.org/covid-vaccinations>)

16. World: Perspective on vaccine rollout

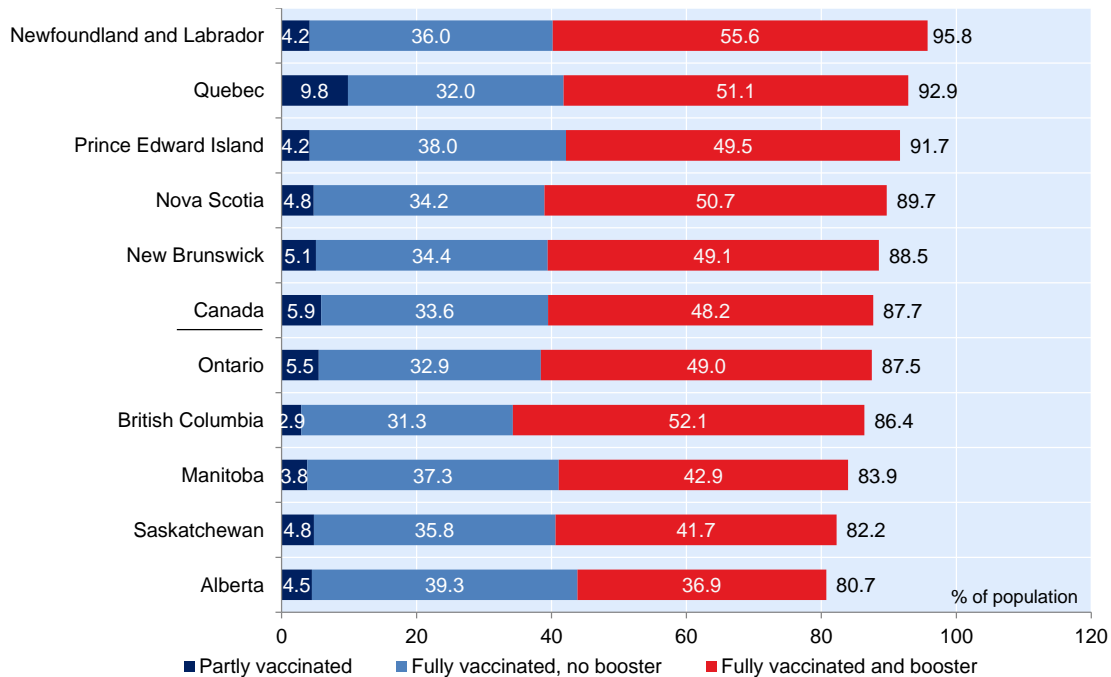
Share of population partly and fully vaccinated against COVID-19



NBF Economics and Strategy (data via <https://ourworldindata.org/covid-vaccinations>)

17. Canada: Perspective on vaccine rollout

Share of population partly and fully vaccinated against COVID-19

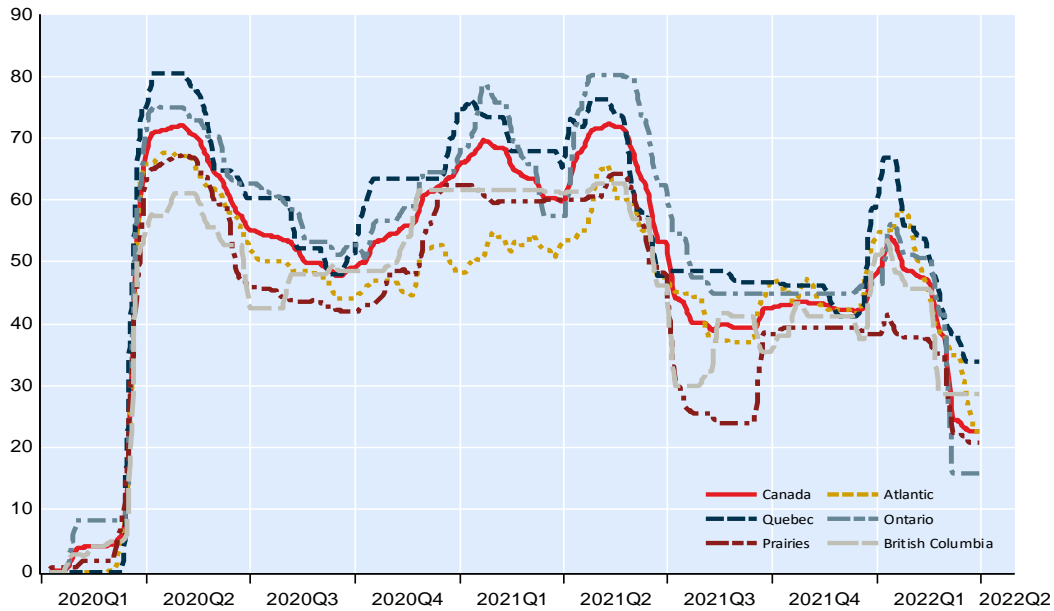


*Saskatchewan updates data on a monthly basis

NBF Economics and Strategy (data via <https://covid19tracker.ca/vaccinationtracker.html>)

18. Canada: Covid-19 stringency index

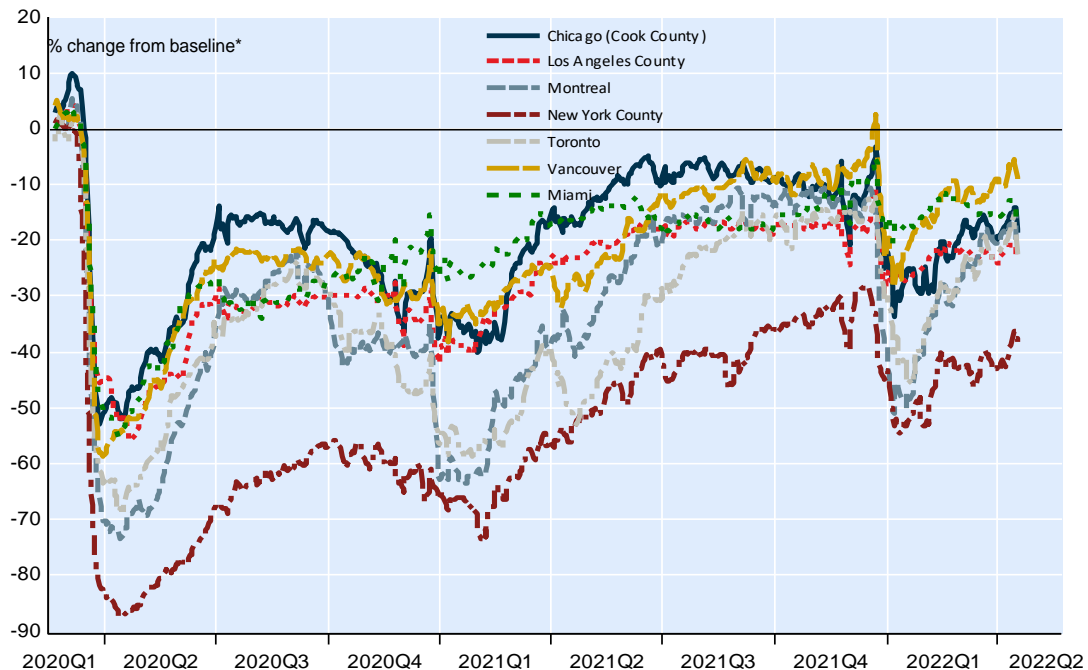
Stringency of policy related to containment restrictions and public information campaigns, 7-day mov. average



NBF Economics and Strategy (data via Bank of Canada)

19. Canada and United States*: Back to normal index

Google mobility data for retail & recreation, 7-day mov. average



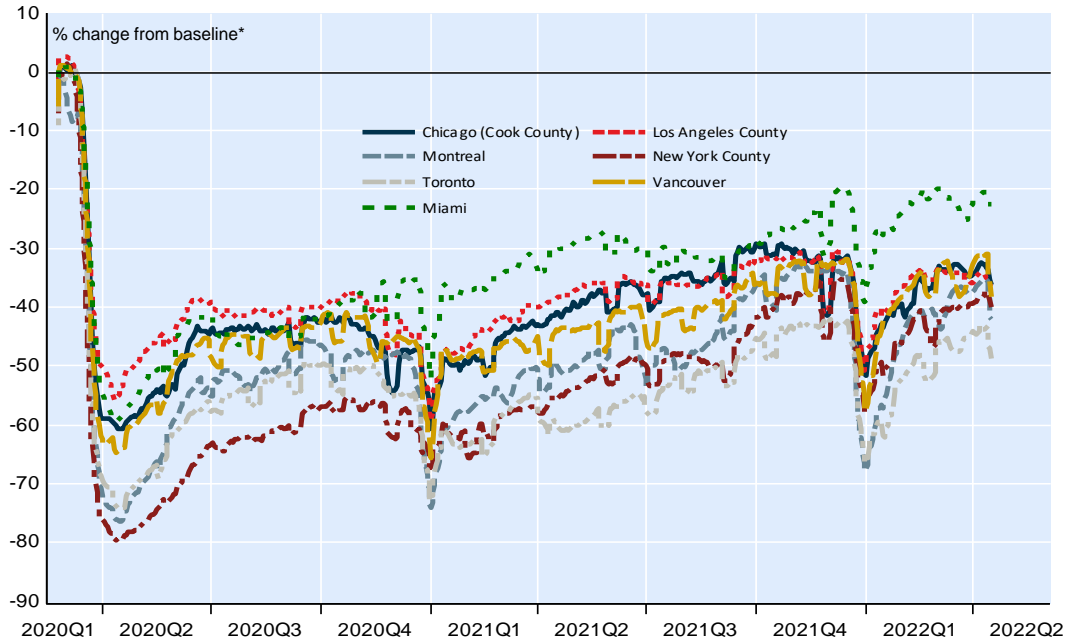
* 3 biggest cities of Canada and United States and Miami

**The baseline is the median value of the corresponding day of the week during the 5 week period from January 3 to February 6 2020

NBF Economics and Strategy (data via Google)

20. Canada and United States*: Back to normal index (2)

Google mobility data for transit and workplaces, workdays only, 5-day mov. average



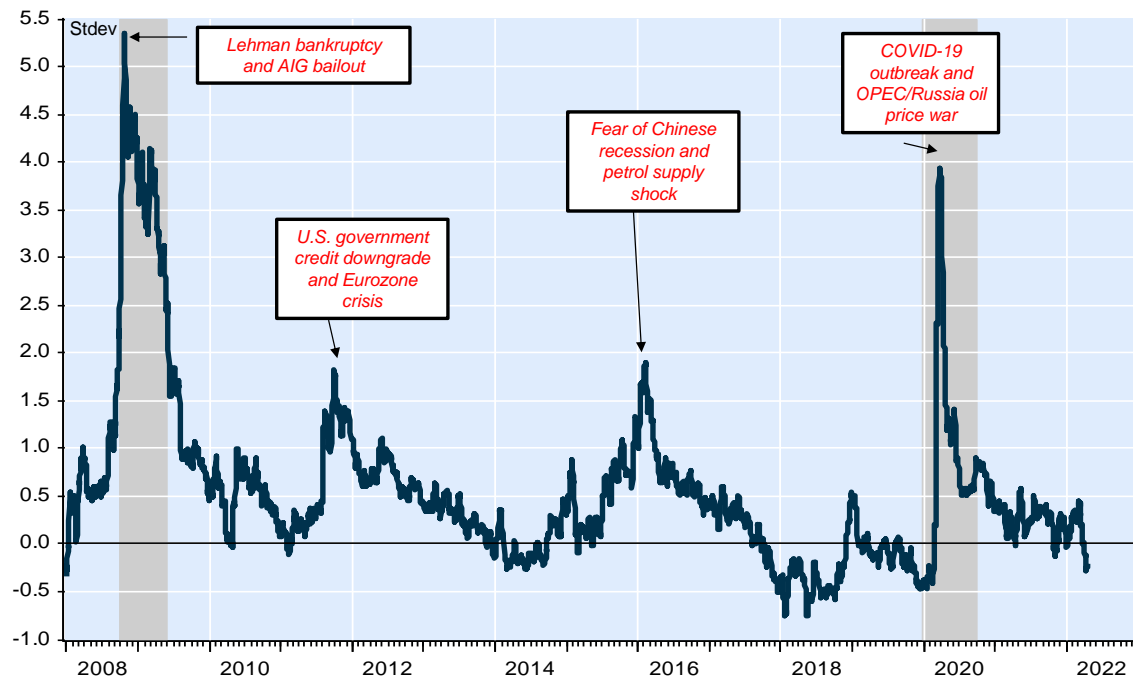
* 3 biggest cities of Canada and United States and Miami

**The baseline is the median value of the corresponding day of the week during the 5 week period from January 3 to February 6 2020

NBF Economics and Strategy (data via Google)

21. Canada: Perspective on financial stress

NBF financial stress index



NBF Economics and Strategy (data via Bloomberg and Refinitiv)

Economics and Strategy

Montreal Office

514-879-2529

Stéfane Marion

Chief Economist and Strategist
stefane.marion@nbc.ca

Kyle Dahms

Economist
kyle.dahms@nbc.ca

Alexandra Ducharme

Economist
alexandra.ducharme@nbc.ca

Matthieu Arseneau

Deputy Chief Economist
matthieu.arseneau@nbc.ca

Daren King

Economist
daren.king@nbc.ca

Angelo Katsoras

Geopolitical Analyst
angelo.katsoras@nbc.ca

Jocelyn Paquet

Economist
jocelyn.paquet@nbc.ca

Toronto Office

416-869-8598

Warren Lovely

Chief Rates and Public Sector Strategist
warren.lovely@nbc.ca

Taylor Schleich

Rates Strategist
taylor.schleich@nbc.ca

General

This Report was prepared by National Bank Financial, Inc. (NBF), (a Canadian investment dealer, member of IIROC), an indirect wholly owned subsidiary of National Bank of Canada. National Bank of Canada is a public company listed on the Toronto Stock Exchange.

The particulars contained herein were obtained from sources which we believe to be reliable but are not guaranteed by us and may be incomplete and may be subject to change without notice. The information is current as of the date of this document. Neither the author nor NBF assumes any obligation to update the information or advise on further developments relating to the topics or securities discussed. The opinions expressed are based upon the author(s) analysis and interpretation of these particulars and are not to be construed as a solicitation or offer to buy or sell the securities mentioned herein, and nothing in this Report constitutes a representation that any investment strategy or recommendation contained herein is suitable or appropriate to a recipient's individual circumstances. In all cases, investors should conduct their own investigation and analysis of such information before taking or omitting to take any action in relation to securities or markets that are analyzed in this Report. The Report alone is not intended to form the basis for an investment decision, or to replace any due diligence or analytical work required by you in making an investment decision.

This Report is for distribution only under such circumstances as may be permitted by applicable law. This Report is not directed at you if NBF or any affiliate distributing this Report is prohibited or restricted by any legislation or regulation in any jurisdiction from making it available to you. You should satisfy yourself before reading it that NBF is permitted to provide this Report to you under relevant legislation and regulations.

National Bank of Canada Financial Markets is a trade name used by National Bank Financial and National Bank of Canada Financial Inc.

Canadian Residents

NBF or its affiliates may engage in any trading strategies described herein for their own account or on a discretionary basis on behalf of certain clients and as market conditions change, may amend or change investment strategy including full and complete divestment. The trading interests of NBF and its affiliates may also be contrary to any opinions expressed in this Report.

NBF or its affiliates often act as financial advisor, agent or underwriter for certain issuers mentioned herein and may receive remuneration for its services. As well NBF and its affiliates and/or their officers, directors, representatives, associates, may have a position in the securities mentioned herein and may make purchases and/or sales of these securities from time to time in the open market or otherwise. NBF and its affiliates may make a market in securities mentioned in this Report. This Report may not be independent of the proprietary interests of NBF and its affiliates.

This Report is not considered a research product under Canadian law and regulation, and consequently is not governed by Canadian rules applicable to the publication and distribution of research Reports, including relevant restrictions or disclosures required to be included in research Reports.

UK Residents

This Report is a marketing document. This Report has not been prepared in accordance with EU legal requirements designed to promote the independence of investment research and it is not subject to any prohibition on dealing ahead of the dissemination of investment research. In respect of the distribution of this Report to UK residents, NBF has approved the contents (including, where necessary, for the purposes of Section 21(1) of the Financial Services and Markets Act 2000). This Report is for information purposes only and does not constitute a personal recommendation, or investment, legal or tax advice. NBF and/or its parent and/or any companies within or affiliates of the National Bank of Canada group and/or any of their directors, officers and employees may have or may have had interests or long or short positions in, and may at any time make purchases and/or sales as principal or agent, or may act or may have acted as market maker in the relevant investments or related investments discussed in this Report, or may act or have acted as investment and/or commercial banker with respect hereto. The value of investments, and the income derived from them, can go down as well as up and you may not get back the amount invested. Past performance is not a guide to future performance. If an investment is denominated in a foreign currency, rates of exchange may have an adverse effect on the value of the investment. Investments which are illiquid may be difficult to sell or realise; it may also be difficult to obtain reliable information about their value or the extent of the risks to which they are exposed. Certain transactions, including those involving futures, swaps, and other derivatives, give rise to substantial risk and are not suitable for all investors. The investments contained in this Report are not available to retail customers and this Report is not for distribution to retail clients (within the meaning of the rules of the Financial Conduct Authority). Persons who are retail clients should not act or rely upon the information in this Report. This Report does not constitute or form part of any offer for sale or subscription of or solicitation of any offer to buy or subscribe for the securities described herein nor shall it or any part of it form the basis of or be relied on in connection with any contract or commitment whatsoever.

This information is only for distribution to Eligible Counterparties and Professional Clients in the United Kingdom within the meaning of the rules of the Financial Conduct Authority. NBF is authorised and regulated by the Financial Conduct Authority and has its registered office at 70 St. Mary Axe, London, EC3A 8BE.

NBF is not authorised by the Prudential Regulation Authority and the Financial Conduct Authority to accept deposits in the United Kingdom.

U.S. Residents

With respect to the distribution of this report in the United States of America, National Bank of Canada Financial Inc. ("NBCFI") which is regulated by the Financial Industry Regulatory Authority (FINRA) and a member of the Securities Investor Protection Corporation (SIPC), an affiliate of NBF, accepts responsibility for its contents, subject to any terms set out above. To make further inquiry related to this report, or to effect any transaction, United States residents should contact their NBCFI registered representative.

This report is not a research report and is intended for Major U.S. Institutional Investors only.

This report is not subject to U.S. independence and disclosure standards applicable to research reports.

HK Residents

With respect to the distribution of this report in Hong Kong by NBC Financial Markets Asia Limited ("NBCFMA") which is licensed by the Securities and Futures Commission ("SFC") to conduct Type 1 (dealing in securities) and Type 3 (leveraged foreign exchange trading) regulated activities, the contents of this report are solely for informational purposes. It has not been approved by, reviewed by, verified by or filed with any regulator in Hong Kong. Nothing herein is a recommendation, advice, offer or solicitation to buy or sell a product or service, nor an official confirmation of any transaction. None of the products issuers, NBCFMA or its affiliates or other persons or entities named herein are obliged to notify you of changes to any information and none of the foregoing assume any loss suffered by you in reliance of such information.

The content of this report may contain information about investment products which are not authorized by SFC for offering to the public in Hong Kong and such information will only be available to, those persons who are Professional Investors (as defined in the Securities and Futures Ordinance of Hong Kong ("SFO")). If you are in any doubt as to your status you should consult a financial adviser or contact us. This material is not meant to be marketing materials and is not intended for public distribution. Please note that neither this material nor the product referred to is authorized for sale by SFC. Please refer to product prospectus for full details.

There may be conflicts of interest relating to NBCFMA or its affiliates' businesses. These activities and interests include potential multiple advisory, transactional and financial and other interests in securities and instruments that may be purchased or sold by NBCFMA or its affiliates, or in other investment vehicles which are managed by NBCFMA or its affiliates that may purchase or sell such securities and instruments.

No other entity within the National Bank of Canada group, including National Bank of Canada and National Bank Financial Inc, is licensed or registered with the SFC. Accordingly, such entities and their employees are not permitted and do not intend to: (i) carry on a business in any regulated activity in Hong Kong; (ii) hold themselves out as carrying on a business in any regulated activity in Hong Kong; or (iii) actively market their services to the Hong Kong public.

Copyright

This Report may not be reproduced in whole or in part, or further distributed or published or referred to in any manner whatsoever, nor may the information, opinions or conclusions contained in it be referred to without in each case the prior express written consent of NBF.