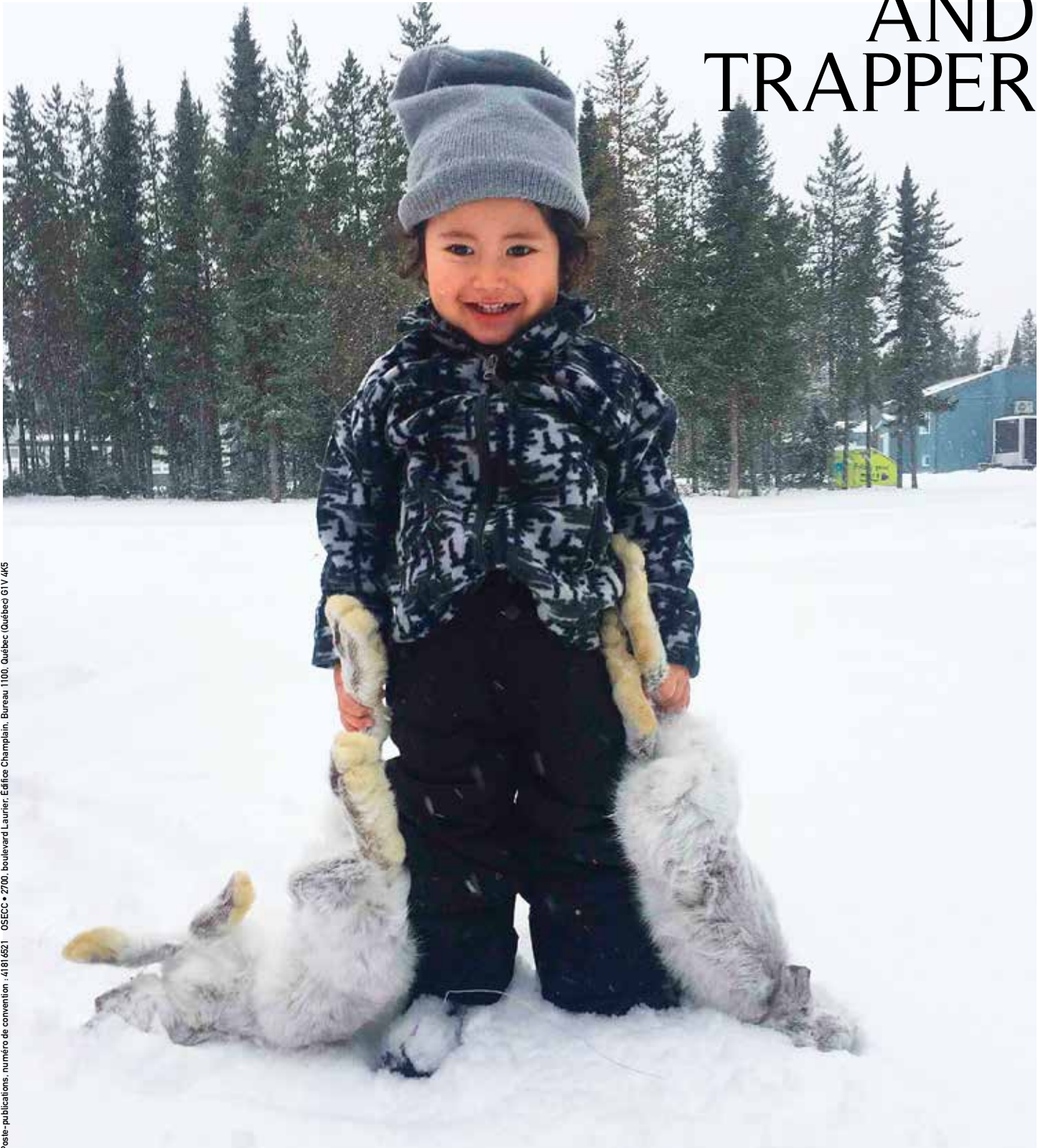




THE OFFICIAL MAGAZINE  
OF THE CREE HUNTERS  
ECONOMIC SECURITY BOARD

NUMBER 31 / WINTER 2021

# THE CREE HUNTER AND TRAPPER



# THE CREE HUNTER AND TRAPPER

To help promote, maintain, and facilitate the participation of Cree people in the traditional lifestyle and harvesting activities as a way of life.

COVER OF THE MAGAZINE:  
JASPER ISERHOFF,  
SON OF JOSHUA ISERHOFF

THE OFFICIAL MAGAZINE OF  
THE CREE HUNTERS ECONOMIC SECURITY BOARD  
NUMBER 31 / WINTER 2021

## IN THIS ISSUE

- 03 Editorial
- 26 News & Reports
- Information about the Program**
- 04 DAILY ALLOWANCE
- 36 LOCAL COMMITTEE
- 104 INSCRIPTION
- Bush Life**
- 06 TRAIL CAM
- 32 HUNTING CHRONICLE
- 34 SAFETY IN THE BUSH
- 38 MAKE THAT SET!
- 40 Traveling Director
- 107 FRENCH SECTION
- 114 YOUTH SECTION



ISSN: 1911-8007  
DÉPOT LÉGAL:  
BIBLIOTHÈQUE NATIONALE DU QUÉBEC, 2021  
BIBLIOTHÈQUE NATIONALE DU CANADA, 2021



THE INFORMATION CONTAINED  
IN THIS MAGAZINE REMAINS  
UNDER THE INTELLECTUAL  
PROPERTY OF THE BOARD.

# EDITORIAL

IN 2007, WE PUBLISHED THE FIRST ISSUE OF THE CREE HUNTER AND TRAPPER MAGAZINE. AT THAT TIME, THE OBJECTIVE WAS SIMPLE. TO VALUE AND ENCOURAGE PARTICIPATION IN TRADITIONAL ACTIVITIES OF THE JAMES BAY CREE.

In the first 30 issues, we covered the main animal species hunted, fished or trapped in Eeyou Istchee. We have been producing this magazine for 15 years now, so we have decided to make some changes.

Changes will not happen all at once! But, slowly, we will try to make the magazine evolve towards something better.

First, we will stop featuring an animal, which was the main subject of the first 30 issues. Instead, we plan to emphasize traditional activities that take place in Eeyou Istchee. Also, you will notice that in this issue there are no Cree syllabics. Perhaps due to the COVID-19 pandemic, it is increasingly difficult to find reliable and efficient translation services from English to the Cree.

We are certainly not giving up on translating to Cree syllabics, however we need to find a reliable translation service. Of course, each magazine will continue to support the mission of the Board and provide information on the Economic Security Program which is the core of our organization.



I hope you like the changes to our magazine and that you will continue to read our printed version and follow us on Facebook.

Serge Larivière,  
Ph.D., MBA, ASC  
Director-general  
Cree Hunters Economic Security Board

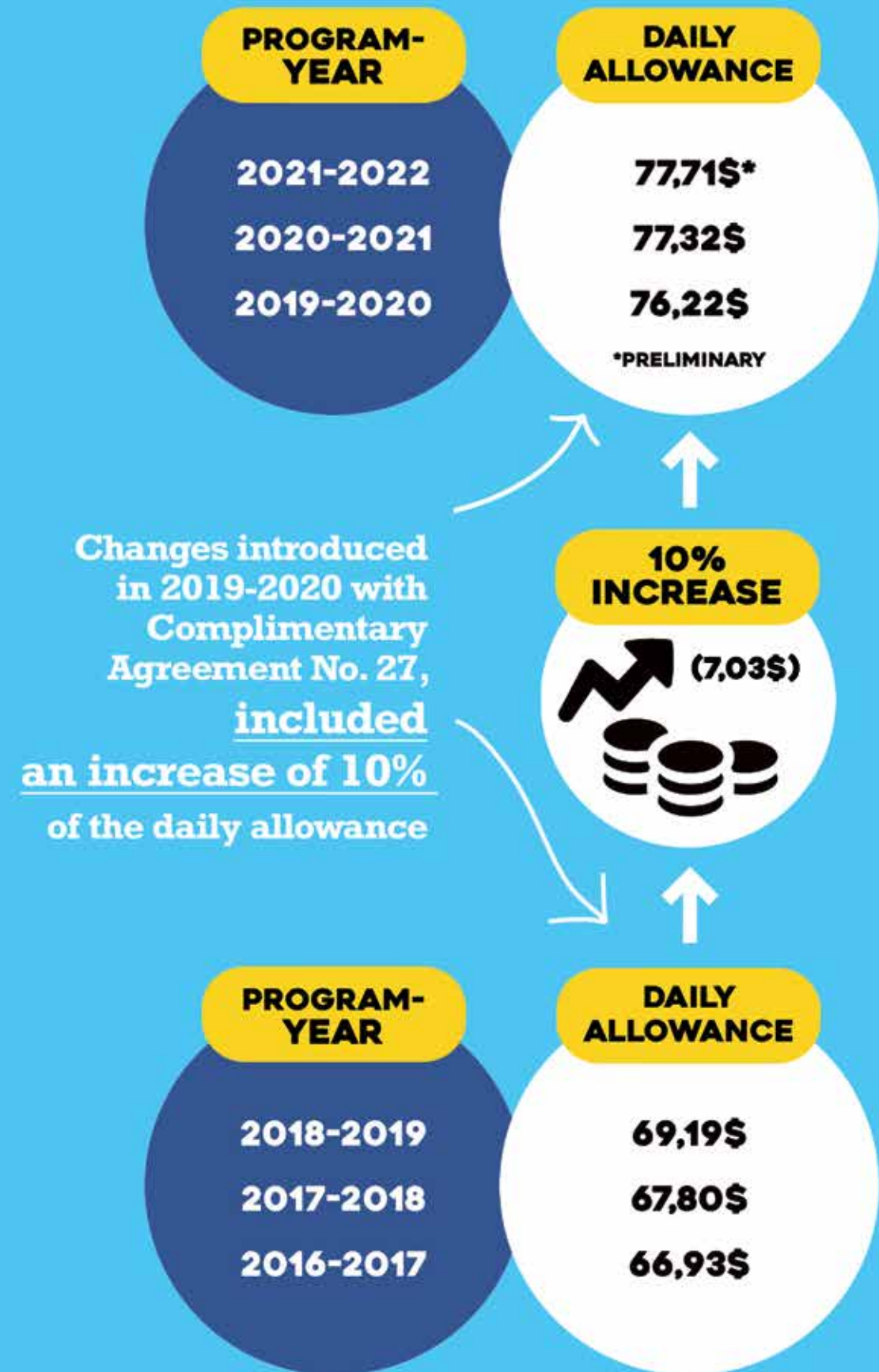
# ECONOMIC SECURITY PROGRAM AND DAILY ALLOWANCE

The daily allowance paid for days spent devoted to harvesting and related activities on the James Bay territory is indexed every program-year according to the Quebec Pension Plan rate.

A preliminary allowance is used at the start of the year and the final retro amount is paid using the final indexed amount.



**FOR THE BENEFICIARIES OF THE ECONOMIC SECURITY PROGRAM FOR CREE HUNTERS**



# Bush Life

Trail Cam Chronicle



















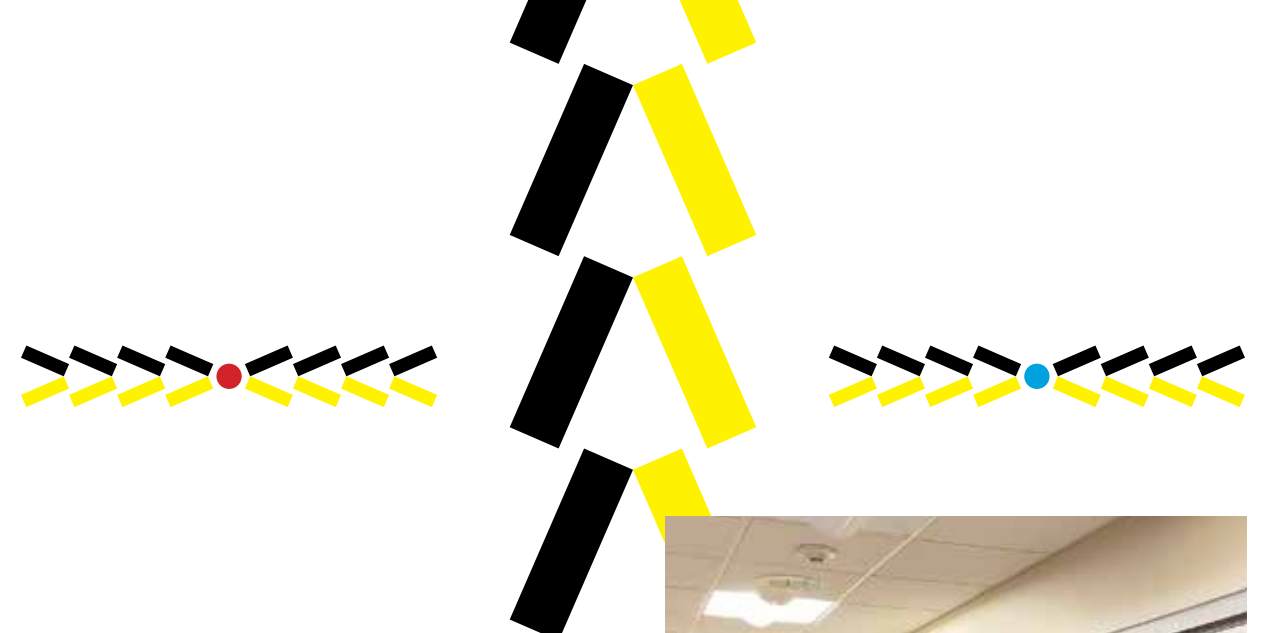


CAMERA 1 04 APR 2016 08:15 pm



11°C 30-04-2021 01:53:04

# NEWS & REPORTS



## CTA MEETING

On June 22, 2021, Director-general, Serge Larivière and the new Director of Administrative Services, Michael Wilson met their Cree colleagues from the Cree Trappers Association while they were having a meeting at the Forestel in Val d'Or. The two organizations gain from spending time together!

## JUNE 22<sup>ND</sup> BOARD MEETING

The Cree Hunters Economic Security Board held its last meeting for program-year 2020-2021 on June 22<sup>nd</sup> 2021 in Val d'Or. As has been the case in the last few years, this meeting was a hybrid meeting, with some members present in person and others by videoconference.



## AUGUST 10, 2021

During a visit to Mistissini, Director-general, Serge Larivière had a chance encounter with Grand Chief Mandy Gull-Masty. They were able to organize an unplanned meeting with George M. Shecapio at his office in Mistissini. Always great to meet leadership and have a chance to talk!



## VISIT WITH RENÉE CLAUDE BAILLARGEON

On August 10, Director-general, Serge Larivière stopped for a short visit with Board member Renée Claude Baillargeon at her office in Chibougamau, Québec. Although the Board tries to limit visits in person, once in a while we must get together to get updated on the news about the Program!



**AUGUST 14, 2021 – SAINT-ESPRIT**

Director-general, Serge Larivière was invited to give a talk to a group of trappers in Saint-Esprit (near Rawdon, Québec) to brief them on the latest news on the fur market.



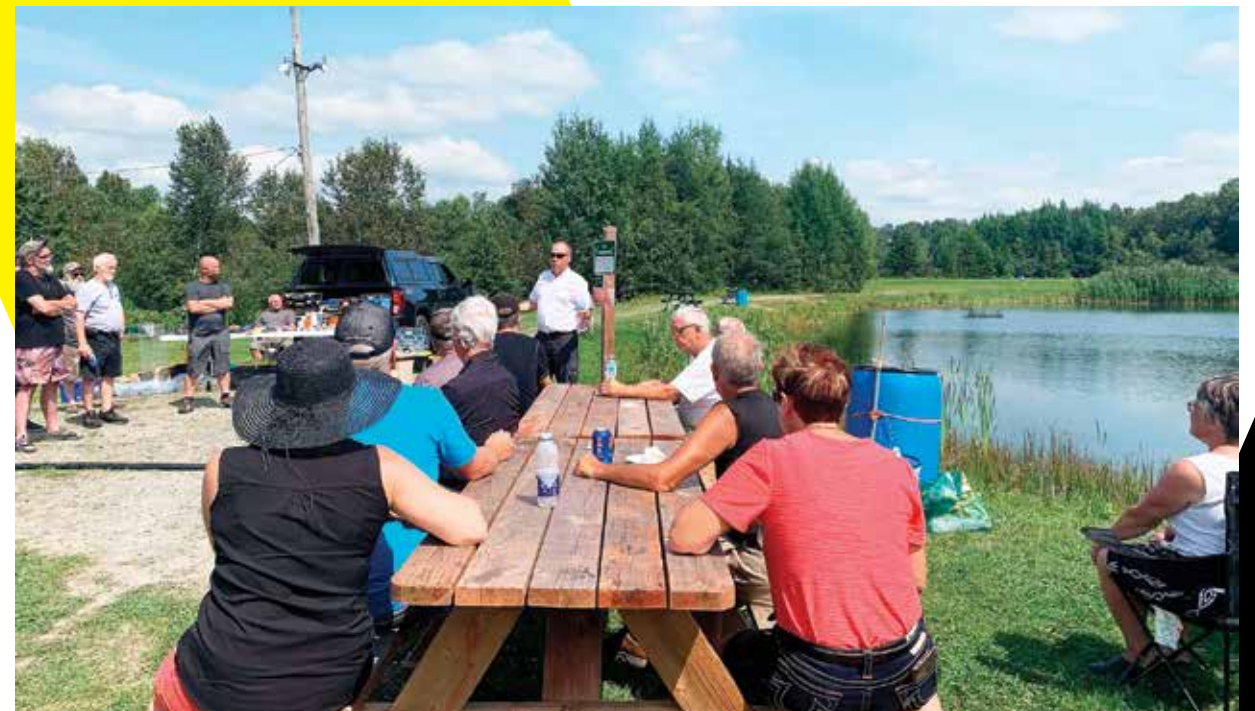
**AUGUST 17, 2021**

On his way north, Director-general, Serge Larivière stopped for a short meeting in Saint-Félicien to meet with Manon Gingras and several organizers of the Eeyou litun program to talk about logistics and what needs to be done with regards to trapping.



**AUGUST 20, 2021**

Director-general, Serge Larivière met the new Director-general for the Ministère du Travail, de l'Emploi et de la Solidarité sociale, Me Esther Quirion to talk about how the Ministry and the Board work together and to update the new Director-general on the issues faced in the administration of the Program. There is more to the Program than what you see in this magazine and maintaining good relationships with leadership, both on the Québec side and on the Cree side is important for our Board!



**AUGUST 22, 2021**

Director-general, Serge Larivière attended yet another trappers meeting, this time in Vallée-Jonction, in the Beauce region of Québec to again talk about the latest news on the fur market.

# KATHY SHECAPIO



The Cree Hunters Economic Security Board would like to offer its most sincere congratulations to Board member Kathy Shecapio as the first Cree woman to be named as Board member and now as Chair of the Board, for program-year 2021-2022.

Each year, both authorities, the Québec government and the Cree Nation government must name Board members and assign who will be Chair and Vice-Chair. Kathy Shecapio was first named as Board member for program-year 2019-2020 and we are honored to have her as our Chairperson for program-year 2021-2022.

Congratulations Kathy!

A photograph of two young women smiling. The woman on the left is wearing a black top and a lanyard. The woman on the right is wearing a white Nike hoodie and a lanyard. They appear to be at a school event or fair.

**Need money for school?**

**We can help!**


Indspire helps Indigenous students - just like you - with additional money to complete your educational journey.

Apply online at [indspire.ca/apply](https://indspire.ca/apply)


**Eligibility**

- Canadian Indigenous, Métis or Inuit student
- Enrolled at an accredited CEGEP, Trade School, College or University

Need help? Email [education@indspire.ca](mailto:education@indspire.ca) or call 1.855.INDSPIRE (463.7747) x0223



Indspire  
Indigenous education | Éducation des autochtones  
Creston, Alberta | Creston, Alberta



building  
brighter futures  
Bursaries, Scholarships, and Awards

# Bush Life

Hunting Chronicle

—

## NATURAL MOOSE SCENTS

When you hunt moose, everybody knows that a good moose call will arise interest of moose within ear range.

However, when a moose answers your call and tries to locate you, they will often approach from downwind in order to smell the animal making the sound. Over the last few years, using moose urine has been increasingly popular and effective. If you go to your local hunting store, there is a wide variety of urines and natural moose scents to choose from. They all have their effectiveness and hunters interested in increasing their hunting success with moose should try a few and see which one works best for them!



# Bush Life

Safety in the Bush

## SLUSH ON ICE

Traveling on frozen waterways is always dangerous. In early winter, ice may not be thick enough to support the weight of a person on snowshoes or of a snowmobile. In mid-winter, when the snow is deep, some waterways may have what we call “slush”.

Slush is water coming back on top of the ice. Water on top of the ice is often hidden by deep snow and therefore very difficult to see. When traveling by snowmobile, you will often see slush only after you go through with your snowmobile. Slush will pack underneath a snowmobile and greatly reduce its speed and often even cause it to stop. Be careful if you suspect slush on the ice. Should you encounter slush when traveling with your snowmobile, do not slow down or stop! Try to increase your speed in order to “float” through the slushy areas! If the snowmobile in front of you goes through slush, do not use the same path, instead pick your own path through fresh snow as this reduces the risk of getting stuck. Should you get stuck, check to see how deep the water is before you get off your snowmobile. Some hunters will get their feet wet in mid-winter stepping off their snowmobile into slush. If you have snowshoes, it is wise to put them on before you get off your snowmobile in an attempt to get out.

Slush is a great danger for hunters in mid-winter, so when travelling in groups, make sure there is enough space between machines so that if the first person gets stuck in slush, at least some of the other machines are free to head back to safety or go back to camp to dry off and warm up.

# LOCAL ECONOMIC SECURITY PROGRAM COMMITTEE

## WHAT IS THE LOCAL ECONOMIC SECURITY PROGRAM COMMITTEE?

A committee of 3 to 7 members established by Chief and Council of each Cree community that acts as a consultative body to the Cree Hunters Economic Security Board. Complementary Agreement no. 27, implemented in 2019-2020 assigned additional powers to the local committees in each Cree community.



**FOR THE BENEFICIARIES OF THE ECONOMIC SECURITY PROGRAM FOR CREE HUNTERS**

## WHAT IS THE ROLE OF THE COMMITTEE?

The Committee's most important activity is the **PREPARATION OF THE LOCAL COMMITTEE LIST.**

It may also recommend an action to be taken in a beneficiary's file or make recommendations on the administration of the program in their community.

## WHAT IS THE LOCAL COMMITTEE LIST?

The list of persons who are recognized by community custom to be practicing harvesting and related activities as a way of life according to the traditions of the community.

### WHY IS IT IMPORTANT?

A person must be inscribed on the Local Committee LIST to be eligible for the Cree Hunters Economic Security Program.

## HOW IS A PERSON ADDED TO THE LOCAL COMMITTEE LIST?



# Bush Life

Make that Set!

## BODYGRIPPER SETTING PLIERS

Big bodygripping traps that we use for beavers, for example Conibear traps are difficult to open when the springs are really strong. The new brands are especially strong and difficult to open, particularly when there is an animal in them. For this reason, serious trappers always carry setting pliers with them. Several brands of pliers are available on the market and you can try different models to see which ones you like best. Setting pliers also increases the safety of handling big traps. Should your hand or somebody else's hand get stuck in a trap by accident, you can use the pliers to quickly open the trap.

Setting pliers also makes it easier to remove beaver or lynx and honestly you will find setting pliers useful and handy, even for setting marten traps.

Setting pliers do not cost much and are a great tool to have on the trapline. Make sure to have a pair with you at all times and carry a spare pair in the truck or at the base camp.



# THE TRAVELING DIRECTOR

Here are some photos taken by the Director-general during his recent trips to Cree communities.

WASHAW SIBI  
JUNE 2021

MEETINGS CONTINUE TO HAPPEN EVEN THOUGH SPECIAL PRECAUTIONS ARE TAKEN!



HAVING A MEAL IS A GREAT REWARD AFTER A LONG MEETING.

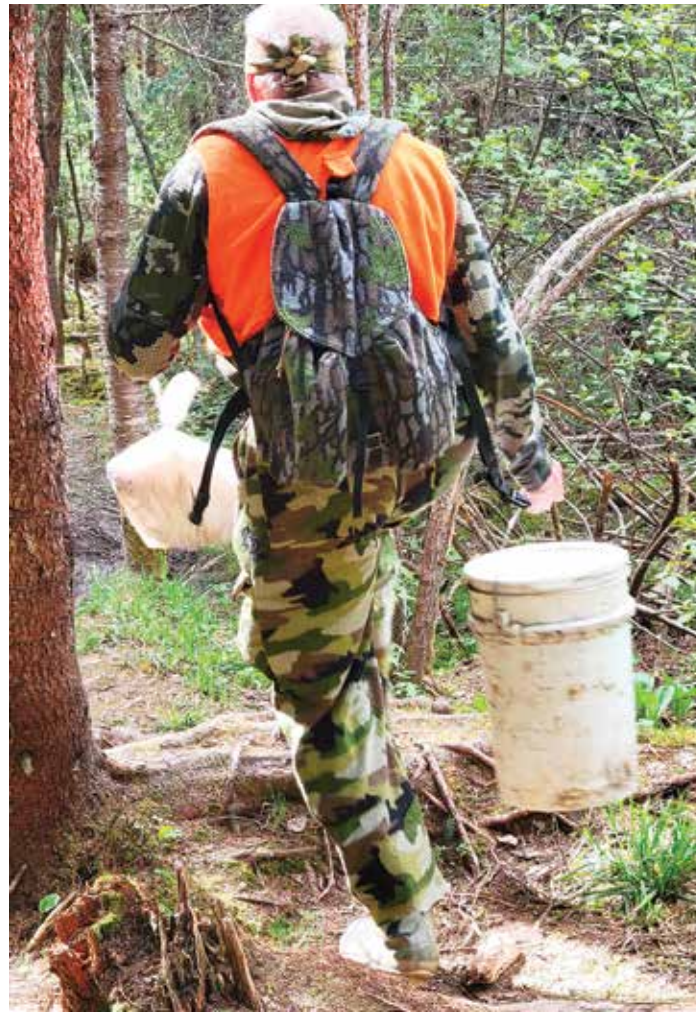


MEETING OF THE LOCAL COMMITTEE IN WASHAW SIBI.  
From left to right: Agnes McKenzie (Local administrator), Oscar Kistabish, Linda Trapper, Karyn Neacappo, Billy Katapatuk Sr., Suzie Mowatt and George M. Shecapio, Program Assistant – Services for the Cree Hunters Economic Security Board.

—  
TRAPLINE W-01  
JUNE 2021



KEN TAYLOR FROM WASKAGANISH  
ALWAYS SMILES WHEN HE IS READY  
TO HUNT BEARS.





NOT MANY HUNTERS CAN STAND THIS CLOSE TO A BEAR!  
KEN TAYLOR REALLY IS A BEAR WHISPERER.



TALLYMAN CHARLIE OTTEREYES, TRAPLINE W-01.



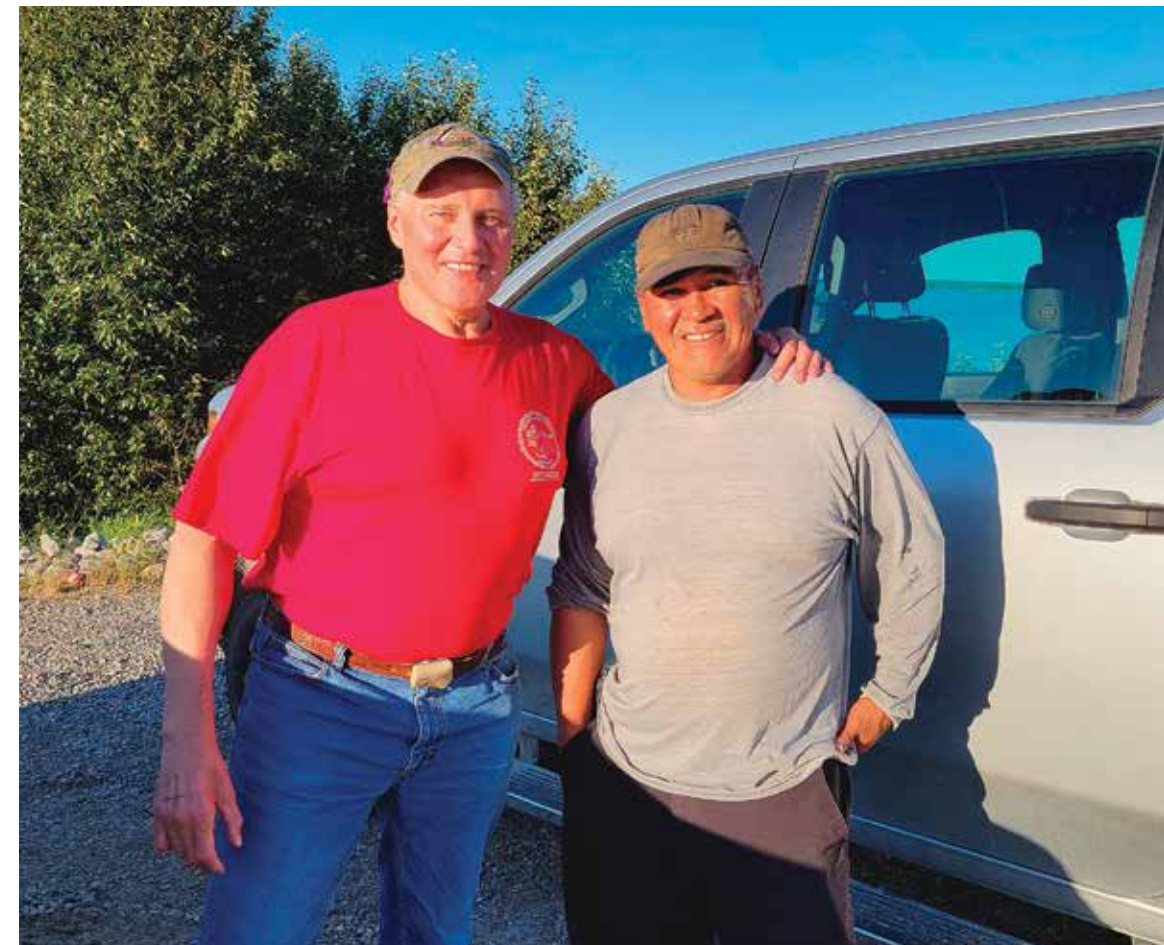
BERT HESTER WITH A BEAR HARVESTED  
WITH HIS UNCLE KENNY TAYLOR.



WASKAGANISH  
JUNE 2021



WASKAGANISH  
RESIDENT KEN TAYLOR  
AND HIS WIFE  
ETHEL KATAPATUK TAYLOR.



KEN TAYLOR  
AND HIS FRIEND  
ANDERSON JOLLY.



HANGING OUT IN THE LOUNGE AT THE CTA OFFICE IN WASKAGANISH IS SANFORD DIAMOND, GEORGE AND FLORRIE KATAPATUK WITH NANCY AND WILLIAM T. HESTER.



QUICK SELFIE IN FRONT OF THE BEAUTIFUL CTA BUILDING.



LOCAL COMMITTEE OF WASKAGANISH  
REVIEWING THE ELIGIBILITY LIST FOR  
THE COMING YEAR.



CHISASIBI  
JULY 2021



MEETING OF THE LOCAL COMMITTEE IN CHISASIBI.  
From left to right:  
William Fireman,  
Natalie Scipio,  
Sally Herodier,  
Virginia Gilpin,  
Roderick Petawabano  
and George M.Shecapio.

—  
SOUTH POINT  
JULY 2021



—  
FORT GEORGE  
JULY 2021



—  
FORT GEORGE  
JULY 2021













THE SECURITY TEAM ON FORT GEORGE ISLAND TAKING A BREAK.



THERE'S ALL KINDS OF WAYS TO STAY ACTIVE AT FORT GEORGE.





MR. ROBERT KANATEWAT



LIVING LEGEND ROBERT KANATEWAT  
DISCUSSES WITH PROGRAM ASSISTANT-  
SERVICES, GEORGE M. SHECAPIO.







THE FERRY TO FORT GEORGE ISLAND IS BUSY DURING THE TRADITIONAL GATHERING.



—  
WEMINDJI  
JULY 2021



GEORGE M. SHECAPIO AND OUR  
LOCAL ADMINISTRATOR IN WEMINDJI,  
MS. KRISTA KAKABAT.



MEETING OF THE LOCAL  
COMMITTEE IN WEMINDJI.  
From left to right:  
Krista Kakabat, Bill Stewart,  
Ernest Tomatuk,  
Thomas Kakabat and  
Margaret Danyluk.





OLD NEMASKA  
AUGUST 2021



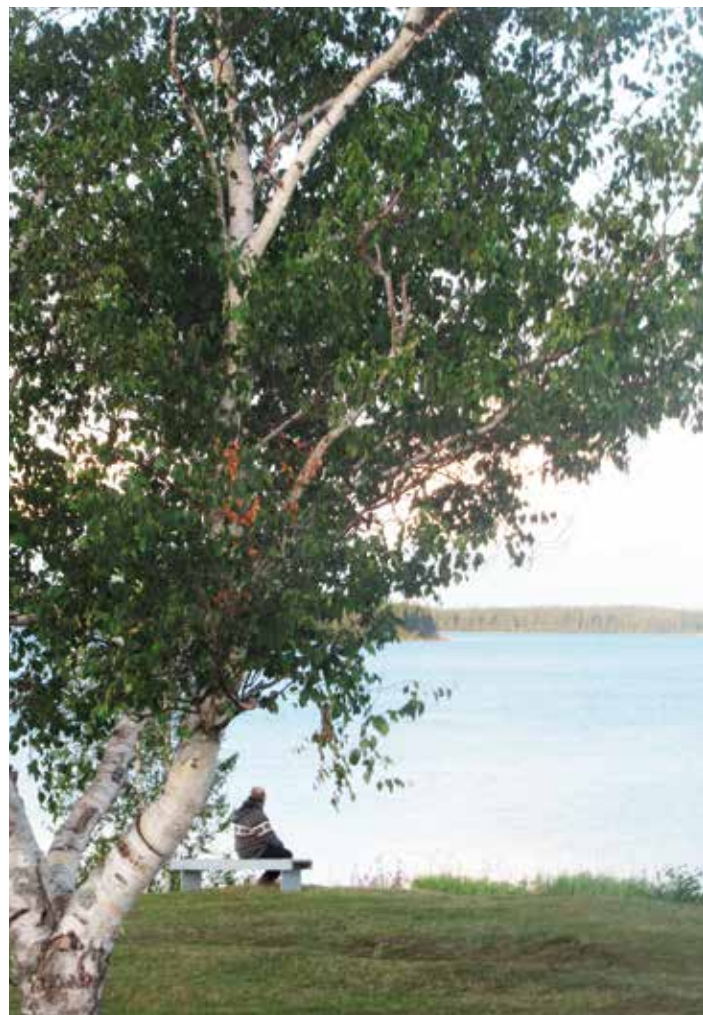


STEPHANIE JOLLYAND HER  
STEP DAUGHTER LYDIA.





KIDS STOP PLAYING FOR A QUICK PICTURE.



JIM BLACKNED AKA "JIMBO" IS A MASTER AT SMOKING STURGEON.





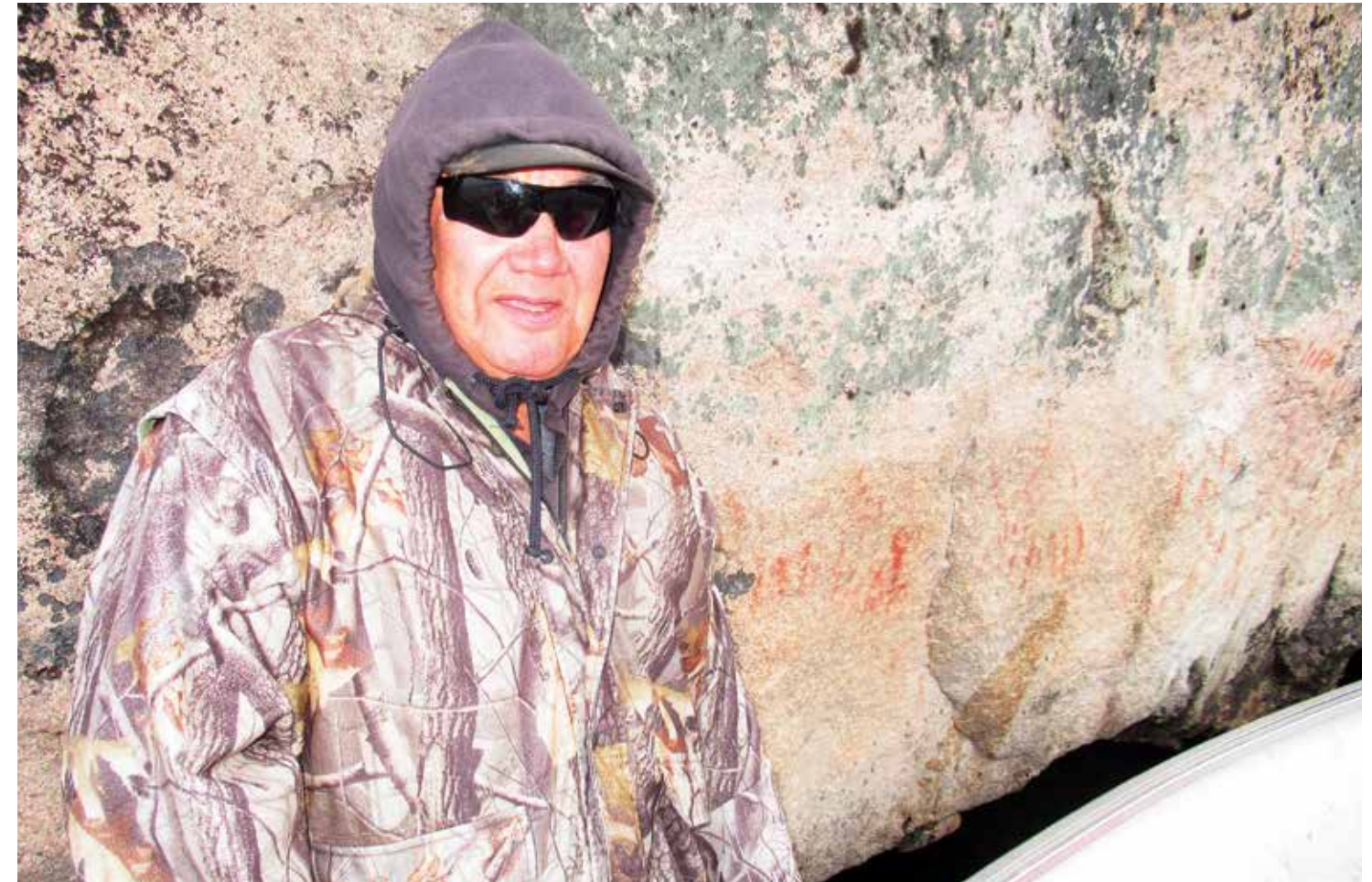
A CANOE BRIGADE FROM WASKAGANISH WAS ENCOUNTERED ON THE LAKE SHORTLY AFTER THEIR DEPARTURE FROM OLD NEMASKA.





ALWAYS TIME FOR A QUICK SWIM!





MARLENA ABRAHAM WAS HAPPY TO GO FOR A BOAT RIDE WITH TALLYMAN ABEL WAPACHEE.



OLD NEMASKA TALLYMAN ABEL WAPACHEE STANDING NEAR THE ANCIENT PAINTINGS ON A ROCK.





JIM BLACKNED CARRIES STURGEON WITH THE HELP OF CHARLOTTE MATOUSH.



ERIC CHEEZO A MASTER AT MANOEUVRING CANOES.

THIS BEAUTIFUL YOUNG FAMILY IS WAITING TO CATCH THE FERRY TO OLD NEMASKA. WABUNCH UKSH, JOSHUA ISERHOFF AND THEIR DAUGHTER WABUGUUN.



YES, THE DIRECTOR-GENERAL, SERGE LARIVIÈRE HAD SOME HELP CATCHING THIS WALLEYE, THANKS TO HIS CREE FRIEND AND GUIDE, GREG JOLLY.





CLAUDE COONISHISH  
AND HIS FAMILY.



—  
MISTISSINI  
AUGUST 2021



OFFICIAL VISIT TO THE CHIEF'S OFFICE.  
From left to right: Serge Larivière (Director-general), Chief of Mistissini  
Thomas Neeposh and George M. Shecapio.



CONRAD MIANSCUM  
IN HIS OFFICE.



CHIEF THOMAS NEEPOSH AND COUNCIL  
BOARD MEMBER WILLIE ISERHOFF.



ANDREW COON AND HAZEL PETAWABANO SMILE AND ANSWER QUESTIONS ABOUT THEIR WORK.



TITUS SHECAPIO, DIRECTOR-GENERAL OF MISSISSINI BAND.

—  
TRAPLINE M-35  
AUGUST 2021





# INSCRIPTIONS FOR THE ECONOMIC SECURITY PROGRAM FOR CREE HUNTERS\*

**TO BE ENROLLED  
FOR 2022-2023**

\*THE ECONOMIC SECURITY PROGRAM FOR CREE HUNTERS WAS  
PREVIOUSLY THE CREE HUNTERS AND TRAPPERS INCOME SECURITY PROGRAM

**RIGHT NOW**

## MEET WITH YOUR LOCAL ADMINISTRATOR

To request to be added to the *Local Committee list* of your community. This list contains the names of people that are recognized as choosing traditional harvesting and related activities as their main occupation.

**YOUR APPLICATION  
MUST BE RECEIVED**

**IN MAY 2022  
AND YOU MUST PROVIDE:**

← New date!

- **Cree Beneficiary number** / All members of the family
  - **Birth Certificate** / All members of the family
  - **Social Insurance card** / Adults of the family
- **Documents confirming ALL INCOME received between January 1 and December 31, 2022** (work, employment insurance, pension amounts, honoraria, etc... ) *by the adults of the family*
- **Information on your harvesting activities, your harvesting territory, your equipment.**

**JULY AND AUGUST 2022**

REVISION OF ALL FILES AND REQUESTS BY THE HEAD OFFICE

**END OF AUGUST 2022**

FIRST PAYMENT OF THE 2022-2023 PROGRAM-YEAR



# ÉDITORIAL

C'EST EN 2007 QUE NOUS AVONS PUBLIÉ POUR LA PREMIÈRE FOIS LA REVUE THE CREE HUNTER AND TRAPPER. À CETTE ÉPOQUE, L'OBJECTIF ÉTAIT SIMPLE, DE VALORISER ET D'ENCOURAGER LA PARTICIPATION AUX ACTIVITÉS TRADITIONNELLES DES CRIS DE LA BAIE-JAMES.

Dans les 30 premiers numéros, nous avons couvert les principales espèces animales chassées, pêchées ou piégées qui sont d'importance pour les Cris de la Baie-James. Il y a maintenant 15 ans que nous produisons cette revue et nous avons donc décidé de faire quelques changements.

Les changements ne se feront pas tous d'un coup! Mais, tranquillement, nous allons tenter de faire évoluer la revue vers quelque chose de meilleur. En premier, nous allons abandonner le concept de l'animal vedette, qui a dirigé la production des 30 premiers numéros. Nous tenterons aussi de valoriser davantage les activités traditionnelles qui se déroulent sur le territoire.

Vous remarquerez aussi dans cette revue qu'il n'y a pas de traduction en syllabique cri. Peut-être dû à la pandémie du COVID-19, il est de plus en plus difficile de trouver des services de traduction fiables et rapides de l'anglais vers le syllabique cri.



Nous n'abandonnons pas l'idée d'avoir des syllabiques cris, il faut simplement trouver un service de traduction fiable. Bien sûr, chaque revue continuera d'appuyer la mission de l'Office et de fournir l'information sur le programme de sécurité économique qui est le cœur de notre organisation.

J'espère que le nouveau concept vous plaira et que vous continuerez de nous suivre attentivement dans notre version papier et bien sûr sur notre page Facebook.

Serge Larivière, Ph.D., MBA, ASC  
Directeur général,  
Office de la sécurité économique des chasseurs cris

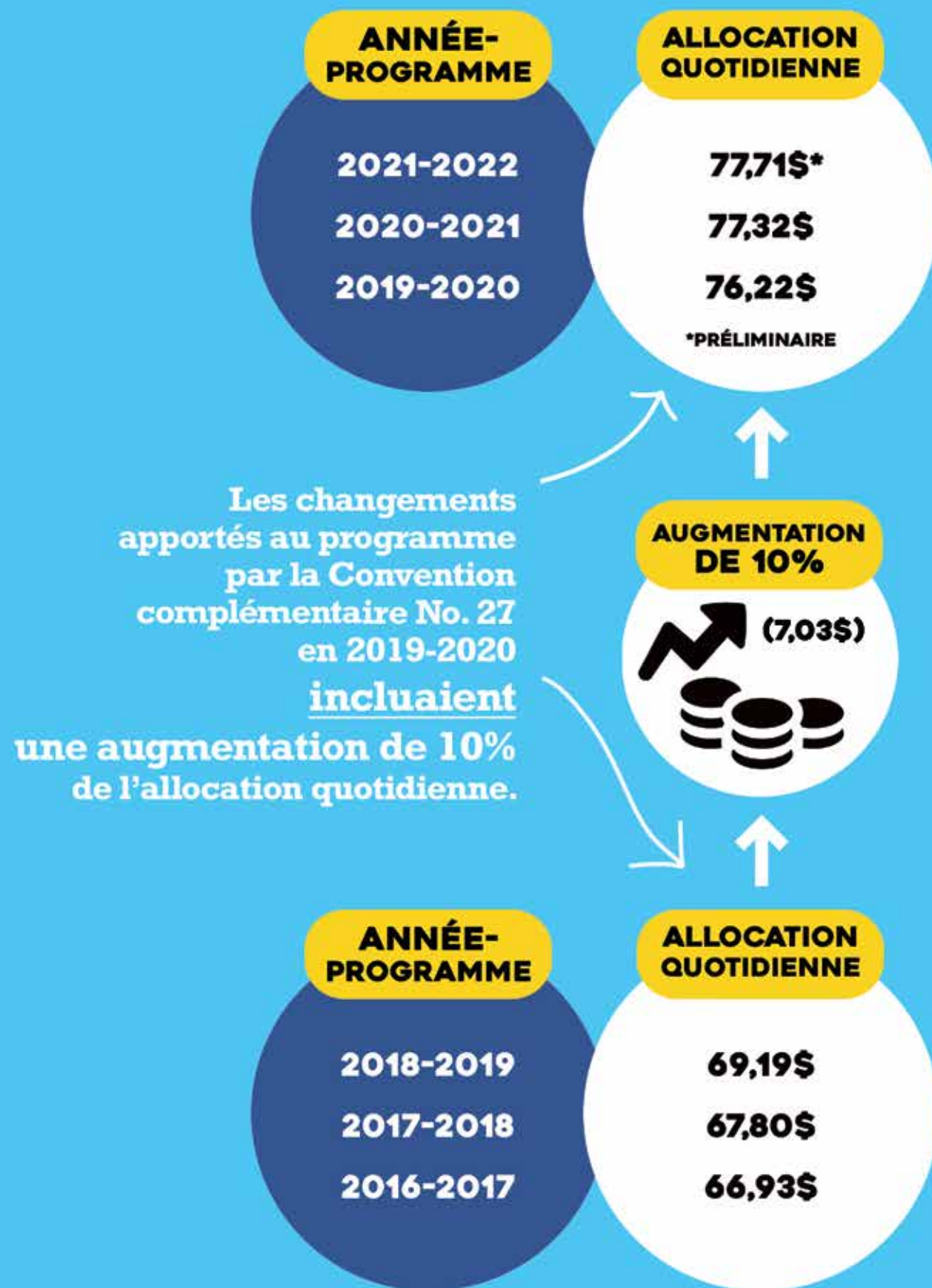
# PROGRAMME DE SECURITÉ ÉCONOMIQUE Et ALLOCATION QUOTIDIENNE

L'allocation quotidienne est versée pour chaque journée consacrée à des activités de récolte et des activités accessoires sur le territoire traditionnel de la Baie James et est indexée chaque année-programme selon le taux d'indexation de Retraite Québec.

Une allocation préliminaire est utilisée pour calculer les prestations en début d'année-programme et la balance payable en fin d'année est calculée à l'aide du montant final indexé.



**POUR LES PRESTATAIRES DU  
PROGRAMME DE SÉCURITÉ ÉCONOMIQUE POUR LES CHASSEURS CRIS**



# COMITÉ LOCAL DU PROGRAMME DE SÉCURITÉ ÉCONOMIQUE

## QU'EST-CE QUE LE COMITÉ LOCAL DU PROGRAMME DE SÉCURITÉ ÉCONOMIQUE DES CHASSEURS CRIS?

Un comité de 3 à 7 membres établi par le chef et le conseil de chaque communauté crie qui agit à titre d'organe consultatif auprès de l'Office de la sécurité économique des chasseurs cris. La convention complémentaire no. 27, mise en œuvre en 2019-2020, a attribué des des pouvoirs supplémentaires aux comités locaux de chaque communauté crie.



**POUR LES PRESTATAIRES DU PROGRAMME DE SÉCURITÉ ÉCONOMIQUE POUR LES CHASSEURS CRIS**

## QUEL EST LE RÔLE DU COMITÉ?

L'action la plus importante du comité est la **PRÉPARATION DE LA LISTE DU COMITÉ LOCAL.**

Il peut également recommander une action à entreprendre dans le dossier d'un bénéficiaire ou faire des recommandations sur l'administration du programme dans sa communauté.

## QU'EST-CE QUE LA LISTE DU COMITÉ LOCAL?

La liste des personnes reconnues par la coutume communautaire qui pratiquent les activités de récolte et activités accessoires comme mode de vie selon les traditions de la communauté.

**Pourquoi la liste est importante?**  
Une personne doit être incluse dans la liste du comité local si elle veut s'inscrire au Programme de sécurité économique pour les chasseurs cris.

## COMMENT FAIT-ON POUR ÊTRE AJOUTÉ SUR LA LISTE DU COMITÉ LOCAL?

Pour s'inscrire au programme, on doit d'abord contacter **l'administrateur local** au mois de **MAI**, avant le début de l'année du programme en juillet.

Le comité local analyse les demandes et détermine qui **participe activement** aux activités de récolte.

Une fois ajouté à la liste, **il faut rencontrer l'administrateur local pour compléter la demande** au programme et fournir tous les documents.

# INSCRIPTIONS POUR LE PROGRAMME DE SÉCURITÉ ÉCONOMIQUE POUR LES CHASSEURS CRIS\*

**POUR ÊTRE INSCRIT  
POUR 2022-2023**

POUR LES PRESTATAIRES DU  
PROGRAMME DE SÉCURITÉ ÉCONOMIQUE POUR LES CHASSEURS CRIS

**MAINTENANT**

**RENCONTRER VOTRE  
ADMINISTRATEUR LOCAL**

*Pour demander à être ajouté à la liste  
du comité local de votre communauté.  
Cette liste contient les noms des personnes  
reconnues comme ayant choisi les activités  
traditionnelles comme leur occupation  
principale.*

**VOTRE INSCRIPTION  
DOIT ÊTRE REÇUE**

**EN MAI 2022  
ET VOUS DEVEZ FOURNIR:**

*← N date!*

- **Numéro de prestataire cri** / *Tous les membres de la famille*
- **Certificat de naissance** / *Tous les membres de la famille*
- **Carte d'assurance sociale** / *Tous les membres de la famille*
- **Documents confirmants TOUS LES REVENUS reçus entre le 1<sup>er</sup> janvier et le 31 décembre 2022** (travail, assurance salaire, pension, honoraire, etc... ) *par les adultes de la famille*
- **Information sur vos activités de récolte, votre territoire de récolte et votre équipement.**

**JUILLET ET AOÛT 2022**

**RÉVISION DE TOUTES LES DEMANDES ET DOSSIERS PAR DE LE SIÈGE SOCIAL**

**FIN AOÛT 2022**

**PREMIER PAIEMENT POUR L'ANNÉE-PROGRAMME 2022-2023**

# YOUTH PAGE FIND THE 7 ERRORS



faire dessin  
bois

lyiyimiichim  
is healthy...  
but lead is not.  
Lead shot is toxic.

Let's keep our families  
and environment healthy  
by using **lead-free ammunition.**

Make sure your gun can handle  
non-lead shot. **It's time to switch.**

For more information, visit  
[creehealth.org/leadfree](http://creehealth.org/leadfree)



**CHISASIBI**

Local Administrators  
HERODIER, Sally  
SCPIO, Natalie  
13, Maamuu Road, PO. Box 300  
Chisasibi (Québec) J0M 1E0  
Telephone: 819 855-2067  
Fax: 819 855-2403

**EASTMAIN**

Local Administrator  
TOMATUK, Betty  
158, Opinaca Road, PO Box 250  
Eastmain (Québec) J0M 1W0  
Telephone: 819 977-2165 Ext. 241  
Fax: 819 977-2168

**MISTISSINI**

Program Assistant – Services  
SHECAPIO, George M.  
Local Administrator  
NEEPOSH, Rachel  
187, Main Street,  
Mistissini (Québec) G0W 1C0  
Telephone: 418 9233334  
Fax: 418 9233330

**NEMASKA**

Local Administration  
12, Lakeshore Road, PO. Box 59  
Nemaska (Québec) J0Y 3B0  
Telephone: 819 673-2030 Ext. 22  
Fax: 819 673-2033

**OIJÉ-BOUGOUMOU**

Local Administrator  
BOSUM, Winnie  
207, Opemiska Meskino, PO. Box 1246  
Oujé-Bougoumou (Québec) G0W 3C0  
Telephone: 418 7453911 Ext. 246  
Fax: 418 7453426

**WASKAGANISH**

Local Administrator  
MCLEOD, Angeline  
57, Waskaganish Street, PO. Box 329  
Waskaganish (Québec) J0M 1R0  
Telephone: 819 895-2247  
Fax: 819 895-2141

**WASWANUPI**

Local Administrator  
JOLLY, John  
16, Poplar Street,  
PO. Box 268  
Waswanipi (Québec) J0Y 3C0  
Telephone: 819 753-2322 Ext. 225  
Fax: 819 753-2082

**WASHAW SIBI**

Local Administrator  
MCKENZIE, Agnes  
141, Rte III Ouest  
Amos (Québec) J9T 2Y1  
Telephone: 819 732-9409 Ext. 48  
Fax: 819 732-9635

**WEMINDJI**

Local Administrator  
KAKABAT, Krista  
79, Beaver Road, PO. Box 219  
Wemindji (Québec) J0M 1L0  
Telephone: 819 9783005 Ext. 229  
Fax: 819 9783200

**WHAPMAGOOSTUI**

Local Administration  
PO. Box 459  
Whapmagoostui (Québec) J0M 1G0  
Telephone: 819-9293528  
Fax: 819-9293784

**HEAD OFFICE**

2700, boulevard Laurier  
Édifice Champlain, Bureau 1100  
Québec (Québec) G1V 4K5  
Telephone: 418 643-7300  
Toll free: 1 800 363-1560  
Fax: 418 643-6803  
mail@chtisb.ca, www.chasseurcri.ca

LARIVIÈRE, Serge,  
Director-general  
WILSON, Michael,  
Director of Administrative Services  
STRONG, Tanya Lynn,  
Program Assistant – Administration  
RUSSELL, Alana,  
Secretary  
SIMARD, Isabelle,  
Graphic Designer