

THE CELEBRATED

COOK'S FRIEND

TRADE



MARK.

BAKING POWDER,

THE FAVORITE OF THE PEOPLE OF CANADA.

Manufactured only by

W. D. McLAREN,

55 Colloge Street, MONTREAL.

THE TRADE LIBERALLY DEALT WITH.

COPLAND & McLAREN,

IMPORTERS & MANUFACTURERS,

CORNER OF

Wellington and Grey Nun Sts., Montreal.

And 83 WEST REGENT ST., GLASGOW,

Offer for sale, at the lowest market rates, the following goods:

CEMENTS, DRAIN PIPES, FIRE BRICK & FIRE CLAY,

AT \$50,

PIG IRON, Galvanized Iron, Canada Plates, TIN PLATES.

RED LEAD, White Lead, Linseed Oil, OLIVE OIL,

TURPENTINE, Ingot Zinc, INGOT COPPER

COLORS, Gold Leaf, Antimony, Wire Brushes, FACINGS,

MOULDERS' SUPPLIES, Fire Clay Tiles, CHIMNEY TOPS.

GARDEN VASES, Boiler Plates, Rivets, BOILER TUBES, &c., &c.

GREENE & SONS, HATS, FURS, STRAW GOODS, —MONTREAL.

RECENTLY PUBLISHED: LOVELL'S GAZETTEER OF BRITISH NORTH AMERICA, PRICE \$2.00.

ESTABLISHED 1830.

The Dominion Type-Founding

(LIMITED),

MONTREAL AND TORONTO.

Are now prepared to execute orders for every article required by Printers. They will send Price Lists and Estimates, and they feel warranted in claiming that they are in a position to supply

TYPE, PRESSES, INKS

And Printers' goods generally, on better terms than any other establishment in the Country.

Agents for THE JOHNSON TYPE FOUNDRY, GEO. BRUCES', SON & CO. CONNOR'S SONS, FARMER, LITTLE & CO.,

And the WM. H. PAGE WOOD-TYPE MANUFACTURING CO.;

Also for CHAS. ENEU JOHNSON & CO.'S CELEBRATED BOOK AND COLORE GEO. H. MORRILL'S NEWS INKS, and Messrs. R. HOE & CO., C. POTTER, Jr. & G. P. GORDON & CO., CAMPBELL PRINTING PRESS CO., and GLOBE MANUFACTURING CO.

SOLE AGENTS FOR THE "RELIANCE" WHARFEDA

The following, among other Newspapers in Canada, are printed
Type supplied by the above Company:

Montreal Gazette
Toronto Globe
Montreal Star
St. John (N. B.) Daily News
Canadian Illustrated News
L'Opinion Publique
Le National, Montreal
Le Nouveau Monde, Montreal
La Minerve, Montreal
Quebec Chronicle
Quebec Mercury
Le Canadien, Quebec
Le Journal de Québec
Le Courier du Canada
Le Foyer Domestique, Ottawa
Ottawa Citizen
La Gazette de Sorel
Sherbrooke News
Le Pionnier, Sherbrooke
Le Progrès, Sherbrooke
St. John's (P.Q.) News
Le Franco-Canadien, St. John's, P.Q.
Waterloo Advertiser
Quebec Budget
Cornwall Gazette
Cornwall Reporter
Manitoba Free Press
North Hasting Review, Madoc
British Canadian, Simcoe

Morrisburg Courier
Dundas County Herald
Carleton Place Herald
Central Canadian, Carleton Place
Le Constitutionnel, Three Rivers
New Dominion, Durham, Ormstown
Argenteuil Advertiser
Digby Courier
Bridgetown Monitor
Berwick Star
Kentville Chronicle
Le Moniteur Acadien, Shediac
Fredericton Reporter
Colonial Farmer, Fredericton, N. B.
St. John's, Newfoundland, Free Press
St. Andrews (N.B.) Standard
New Era, Charlottetown, P. E. I.
The Herald " "
The Island Argus " "
The Review, Peterborough
The Arnprior Review
Addington Reporter
Galt Reporter
Bothwell Times
Welland Telegraph
New Dominion, St. John, N. B.
Journal, St. Marys
Conservator, Brampton
Progress, Unionville.

F. W. A. OSBORNE, Man

H. H. CROMWELL & CO., IRON FOUNDERS

AND MANUFACTURERS OF

ollow Ware, Baths, Sinks, Window and Door
Gratings, Furnace Doors and Frames,
Chimney Caps, Sweep's Hole,
Doors, &c., &c.

ORDERS SOLICITED FOR
IDGE, RAILWAY AND BUILDERS' CASTINGS OF EVERY
KIND, GIRDERS, TRUSSES, COLUMNS, MACHINE
AND ORNAMENTAL CASTINGS, PLUMBERS'
CASTINGS, &c., &c.

Office and Works,

84 to 90 WELLINGTON ST.,
MONTREAL.

Oil Cabinet & Novelty Co.,

Manufacturers of Sharp's Patent Safety

OIL CABINETS,

ivelt's Extension and non-Extension Step Ladders,
Wilson's Automatic Clothes Wringer,
Meat Safes, Ice Chests,
And all kinds of Wooden and Metal Ware.

ALSO

Agents for G. W. Reed's Refrigerators of 785 Craig Street, Montreal.

Office and Salesroom, 483 and 485 St. Paul St.,

MONTREAL.

CH SALESROOMS:

JOHN LEITCH & CO., St. John, N.B.

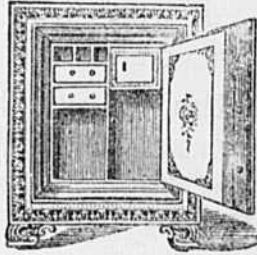
LEMUEL FARWELL, Sherbrooke, Que.

WILES DRAKE,
Manager.

GEORGE J. SHEPPARD,
Sec.-Treasurer.

GODFROI CHAPLEAU,

Dominion Safe



Manufactory.

Burglar-Proof and Fire and Burglar-Proof Safes

SILVER MEDAL

AT THE

CENTENNIAL
EXHIBITION,
PHILADELPHIA.
1876.



FIRST PRIZE AT THE

Provincial Exhibition
OF 1873.
MONTREAL.

FIRST PRIZE AT THE
Provincial Exhibition
OF 1875, OTTAWA

The Safes I manufacture, justly considered at present as the best ever offered to the public combine all the qualities required as to strength and safety. In order to avoid moisture in the interior of the Safe, and offer the greatest possible resistance in case of fire, an air space has been secured between the Iron sheets which form the envelope or frame of the Safe.

The hinges are not of Cast, but Wrought Iron, resting on a solid base of Steel with aperture, in order to remove the doors in case they should in time require any repairs. This improvement gives an undoubted superiority over all other Safes.

These Safes are all they are represented to be, and a visit to my Factory will convince every thinking man of the truth of what I affirm.

I also Manufacture to order

Iron Vault Linings, Burglar-Proof Vault Doors, Fire-Proof Doors.

Iron Shutters, Iron Doors for Public Buildings, Messengers' Chests and Deed Boxes, Cell Doors and Gratings, Jail, Safe, Bank and Store-door Locks, Iron Beams and Iron Bridges, &c.

A large number of Second-hand Safes of different makes always on hand, which will be sold CHEAP.

Also, Manufacturer of

STONECUTTERS' TOOLS.

OFFICE: 320 ST. LAWRENCE STREET.

WORKS: Corner of Ontario and St. Charles Borromeo Streets,

MONTREAL.

James J. Wiseman

DESIGNER
and Engraver
WOOD
TYPE METAL
626 CRAIG STREET
MONTREAL

The best quality of work at the most reasonable prices,

MACHINERY.

I am able to produce Engravings of all kinds of Machinery, Stoves, Pianos, Melodeons, Agricultural Implements, &c., &c., for Catalogues, Circulars, Advertisements or other purposes. Architectural work in the best manner; Store Fronts, Views of Manufactories, Hotels, or Streets, Engraved from Photographs or Sketches.

Labels for Manufactories and Druggists; Bill-heads, Letter-heads, Ornamental Work, Borders of every description, Shipping and Show Cards, &c., &c.

Illustrations for Newspapers with the promptness the Press demands.

Cigar Brands, Electrotyping and Stereotyping at Shortest Notice.

No Apprentice work delivered.

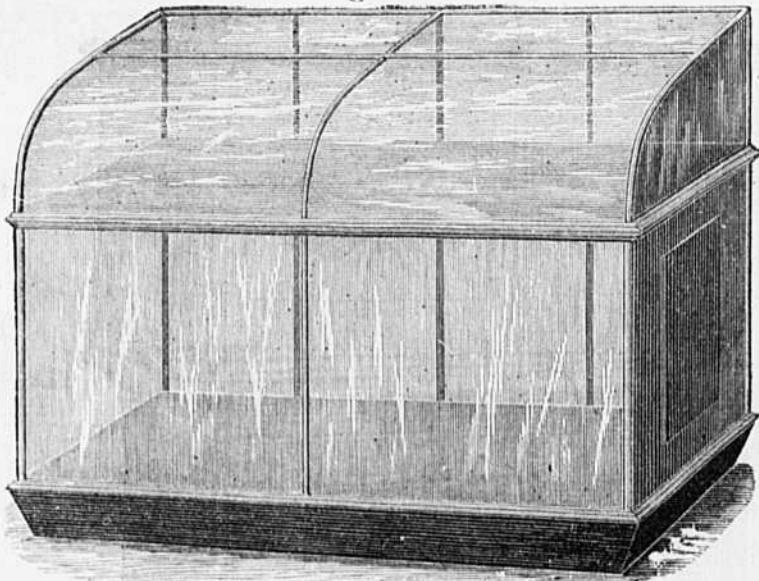
STEELE BROTHERS.

OFFICE AND FACTORY,
CORNER OF MURRAY AND SMITH STS.,
MONTREAL.

Roofing and Paving Materials,
Roofing Felt Saturated,
Sheathing do,
Dry Roofing Felt,
Dry Sheathing do.
Carpet do.
Roofing Pitch,
Wood, (Creosote,) Varnish,
Parafine Varnish,
Imperial Black Varnish for
Tin Roofs, &c.,
Coal Tar.

STEELE BROTHERS,

OFFICE AND FACTORY,
CORNER OF MURRAY AND SMITH STREETS,
MONTREAL.



Cut representing round front case setting on Show Counter.

MONTREAL SHOW CASE CO.,

C. S. MADDEN & T. MADDEN,
MANUFACTURERS OF ALL STYLES OF

German Silver and Wood Show Cases,

ALSO MANUFACTURERS OF THE

CELEBRATED SHOW COUNTER,

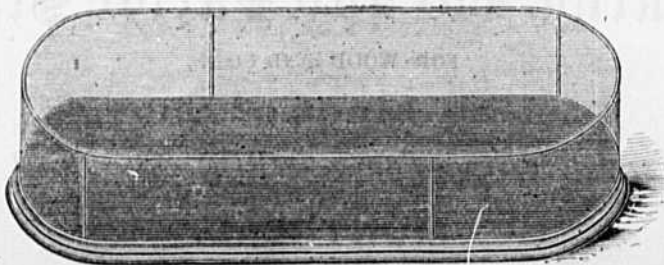
For Jewellers, Druggists, Milliners, &c.,

AQUARIUMS MADE TO ORDER.

MANUFACTORY AND SALESROOM,

517 LAGAUCHETIERE ST.,

MONTREAL.



OVAL END CASE FOR CENTRE OF STORE



JODOIN & CO.,
IRON FOUNDERS,

Manufacturers and Wholesale Dealers in

Cooking, Box and Parlor Stoves,

FOR WOOD AND COAL,

And all kinds of Shovels.

Office and Warerooms : 309 St. Paul Street,

MONTREAL.

Orders from the trade solicited, and promptly filled at the lowest market rates.

CUT GLASS DOOR PANES.

J. A. EGGINTON,

GLASS CUTTER, &c,

No. 637 Craig Street, Montreal.

Manufacturer of

Cut Glass for Door and Window Panes, Colored Glass Signs,

PEW NUMBERS, &c.

Proprietor of the

LOCAL ADVERTISING MIRROR,

Size about 5 feet by 3 feet 6 inches,

Cheapest, Handsomest and best Medium ever offered to the
advertising public.

For full particulars, apply by letter, as above.

A. BEAUCHEMIN & CO.,

MANUFACTURERS OF

Threshing Machines,

NO. 304½ CRAIG STREET,

Opposite the Cattle Market,

MONTREAL.

A. BEAUCHEMIN & CO. will have constantly at their shop:

Threshing Machines, Mowing and Self-Raking Machines,

Repairing done with care and promptitude, at very liberal prices.

J. W. PATERSON & CO,

96 COMMON STREET,

MONTREAL.

MANUFACTURERS AND DEALERS IN ALL KINDS OF

Roofing Material,

WHOLESALE AND RETAIL.

All orders from the Country promptly filled.

Tarred Felt, Nos. 1 and 2

Tarred Sheathing, Hard and Soft.

Dry Felt, for Lining and Carpets.

Rosin Sized Sheathing.

Roofing Pitch and Cement.

Coal Tar, American and Canadian.

Shingle Varnish.

Iron Varnish.

Gravel for Roofs and Walks.

Rosin.

Pine Pitch.

Pine Tar.

Oakum.

To parties in the Country who have Buildings to cover or enclose, by sending us the size of Buildings, we will give them prices of material, quantities required, and instructions how to use.

NEW & FANCY DRY GOODS,
293 St. Lawrence Street, Cor. Mignonne Street.

It is admitted by all, that

F. X. LECAVALIER & CO.

Keep the genuine STORE, and the best assorted in ST. LAWRENCE STREET, where you are always certain to find everything you may require in the

DRY GOODS LINE,

AT THE LOWEST POSSIBLE PR. CES.

The Cottons, Calicos, Tweeds and Cloths are always sold at a sacrifice. Ha's and all other articles of fashion are of the latest style and very cheap.

Two experienced MILLINERS are constantly at the command of Ladies.

Two First-Class TAILORS are also employed in our establishment.

ALL ORDERS EXECUTED ON THE SHORTEST NOTICE.

AUCTION GOODS AND JOB LOTS ALWAYS ON HAND.

En coming to Montreal, please call on us before going elsewhere.

F. X. LECAVALIER & CO.,

293 ST. LAWRENCE STREET, COR. MIGNONNE STREET

MAGASIN DE NOUVEAUTES,

293 Rue St. Laurent, Coin de la Rue Mignonne.

Il est admis par tout le monde qu :

F. X. LECAVALIER & CIE.

Tiennent le véritable MAGASIN le mieux assorti de la RUE ST. LAURENT, où vous êtes toujours certain de trouver tout ce dont vous pouvez avoir besoin en fait de

MARCHANDISES SECHES,

A DES PRIX PLUS BAS QU'AILLEURS.

Les Cotons, les Indiennes, les Tweeds, les Draps, sont toujours vendus à sacrifice, les Chapeaux et tous les articles de mode sont dans les derniers goûts et à bon Marché. 2 Modistes d'expérience sont constamment à la disposition des Dames.

2 Tailleurs de première classe sont employés dans notre établissement.

TOUT ORDRE EXECUTE SOUS LE PLUS COURT DELAI.

MARCHANDISES D'ENCAN ET JOBS TOUJOURS EN MAIN.

En allant à Montréal, veuillez venir nous rendre visite avant d'aller ailleurs.

F. X. LECAVALIER & CIE.

293 RUE ST. LAURENT, COIN DE LA RUE MIGNONNE.

ESTABLISHED 1826.

LA MINERVE,
[CONSERVATIVE.]

THE OLDEST FRENCH PAPER IN THE DOMINION.

TWO EDITIONS DAILY,

At 5 A. M. and 5 P. M.

Annual Subscription :

Delivered to City Subscribers, \$6.00 in advance ; \$7.00 Semi-Annually ; \$8.00 after 12 months.

To Country Subscribers, \$5.00 in advance ; \$6.00 after 12 months.

Advertisements inserted at very moderate rates. Its large circulation makes it, beyond doubt, the best French Advertising medium in Canada.

LA SEMAINE AGRICOLE,
WEEKLY ;

Subscription \$1.00 per Annum.

OFFICE,

Nos. 212 and 214 Notre Dame Street,
MONTREAL.

DUVERNAY FRERES & DANSEREAU,

Proprietors and Printers.

In connection with the above we have one of the best Job Offices in the City, possessing every facility for the execution of all description of Plain and Fancy Printing.

The Corrugated Stove Pipe Elbow Depot,

75 ST. JAMES STREET, (UP STAIRS.)

MONTREAL.

BRANCHES:

T. E. WILSON, HALIFAX, N. S.
 W. H. THORNE & Co., ST. JOHN, N. B.
 J. J. SHAW, QUEBEC, P. Q.
 BLYTH & KERR, OTTAWA, ONT.
 CHOWAN & CUNNINGHAM, KINGSTON, O.
 M. & L. SAMUEL, TORONTO, ONT.
 ADAM HOPE, & Co., HAMILTON, ONT.
 McGRARY MANUFACTURING Co., LONDON, O.



FUNKER'S

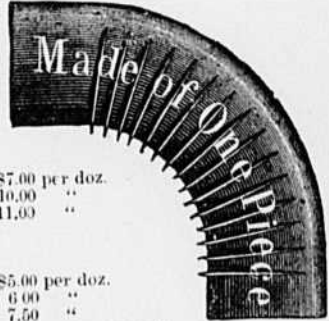
Corrugated One Piece Stove Pipe Elbow.

MONTREAL,

187

SIR.—I have always on hand an excellent stock of these Celebrated Patent Corrugated Stove Pipe Elbows, at exceedingly low prices, viz:—

ENGLISH IRON.		Per doz.
7 in. Common Elbows @	\$4.00
7 " Bright, "	5.00
7 " Best Bright "	6.00
6 " Best Bright "	5.00
6 " Common "	3.50
5 " Bright "	4.00
5 " Common "	3.00
RUSSIAN IRON.		
5 inch Elbows, @	\$7.00 per doz.
6 " "	10.00 "
7 " "	11.00 "
RE-GALVANIZED IRON.		
<i>For Water and Store Pipes.</i>		
5 inch Elbows, @	\$5.00 per doz.
6 " "	6.00 "
7 " "	7.50 "



TERMS, 3 MONTHS; OR 5 PER CENT. FOR CASH.

I shall be most happy to receive your orders at these unprecedentedly low prices, and will give them my prompt attention. Address your orders to any of the above-mentioned firms, or to

Yours truly,

Post Office Box: 625.
 MONTREAL.

F. W. FUNKE, *For the Corrugated Elbow Co*

J. E. LAREAU & CO., Commission Merchants.

WHOLESALE DEALERS IN ALL KINDS OF
 COUNTRY PRODUCE, FLOUR, GRAIN, HAY, STRAW, POULTRY,
 EGGS, BUTTER, SHELL OYSTERS CRANBERRIES, ETC.
 CONSIGNMENTS RESPECTFULLY SOLICITED.

39 & 41 St. Paul St., near Bonsecours Market, Montreal.
 Or at the Warehouse on St. Etienne Street, Point St. Charles, opposite the
 New Basin, between Wellington Street and G. T. R. Sheds.

P. O. BOX, 1006.

REFERENCES.

R. A. CAMPBELL, Broker, Montreal, P. Q.; P. A. FAUTEUX, Cashier of Ville-Marie Bank, Montreal;
 T. ARPIN, Produce Broker, St. Johns, P. Q.; JOSEPH LAPAGE, Wholesale Provision Store, Quebec; N.
 OTTENOR, Notary Public and Real Estate Agent, Buffalo, N. Y.; LAMPSON & MAYNARD, Commission
 Merchants, Boston, Mass.; H. P. STANLEY'S SONS, Commission and Fruit, Chicago, Ill.; Union Bank of
 Prince Edward Island; TRIMM & SUMNER, Poultry, Washington Market, New York City; FLACK &
 BROTHER, Grocers and Commission, Troy, N. Y.

CANADA PAPER CO.,

(LIMITED,)

SUCCESSORS TO

ANGUS, LOGAN & CO.,

PAPER MAKERS

AND

WHOLESALE STATIONERS,

374, 376 and 378 ST. PAUL STREET,

MONTREAL.

WINDSOR MILLS, P.Q.

SHERBROOKE MILLS, P.Q.

T. MAXWELL BRYSON & Co.,

Custom House Brokers,

SHIPPERS and FORWARDERS,

Storage for Merchandise, either Free or in Bond.

32 ST. FRANCOIS XAVIER STREET, MONTREAL.

AGENTS FOR OCEAN EXPRESS COMPANY OF LONDON, ENGLAND.

BLANK ACCOUNT BOOKS

MANUFACTURED BY

Lovell Printing and Publishing Company,

MONTREAL.

TWELVE MEDALS at the UNIVERSAL EXHIBITIONS.

First Prize (Médaille de Progrès) at the Vienna Exhibition, 1873.

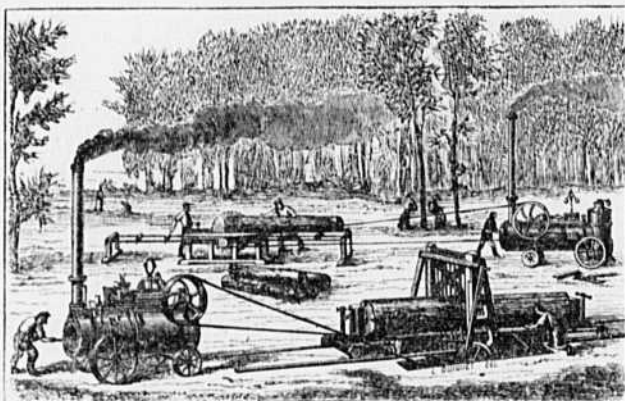
First Prize at Philadelphia Exhibition, 1876.

F. ARBEY,
Mechanical Engineer,

41 COURS DE VINCENNES, 41,

(Near the Place du Trône,)

PARIS, FRANCE,



BUILDER OF SAW MILLS,

Manufacturer of all kinds of Saws

AND

**MACHINERY USED IN THE CONSTRUCTION OF ARSENALS,
 RAILROADS, &c.,**

Manufacturer of **TOOLS** used by Engineers, Builders, Lumbermen, Wagon-makers, Joiners, Carriage makers, Coopers, &c., &c.

N.B.—Illustrated Catalogue, in French and English, forwarded on application, (enclosing 3 francs for postage).

EDUCATION.

MRS. LOVELL purposes forming a CLASS for the instruction of YOUNG LADIES who, having been taught the elementary branches, desire to pursue a course of study that will tend thoroughly to train their minds.

The Class will be conducted in a similar manner to that so successfully carried on by the late MISS LYMAN, with whom MRS. LOVELL was a pupil.

As none will be received under fifteen years of age, the number will be limited, consequently, each pupil will have the advantage of particular personal attention.

MRS. LOVELL's object is not so much to impart knowledge to those under her care, as so to train their minds that they can make acquisitions by themselves, and thus imbue them with a taste for Literature that may induce its pursuit in after-life.

Several hours during the week will be devoted to conversation on subjects previously selected, with the view of enabling the pupils to express their thoughts with ease and fluency.

The course of study will include HISTORY, ENGLISH LITERATURE, COMPOSITION, RHETORIC, MATHEMATICS, and reading aloud from BRITISH CLASSICS and other standard works.

LATIN, FRENCH and GERMAN will be taught by Masters.

MUSIC will receive special attention. In addition to professional instruction, MRS. LOVELL purposes devoting one evening weekly to rehearsals among the pupils.

While MRS. LOVELL attaches great value to the higher branches of education, she hopes, from experience, to be able to convince her pupils that it is essential for the regulation and happiness of life to cultivate the knowledge of practical duties.

The BIBLE will be studied as a means of moulding the character and of training the heart.

MRS. LOVELL's aim will be to supply to her pupils, as far as possible, the gentle restraints and influences of home.

Few rules will be given, but a sense of responsibility to a Higher Power will be inculcated, and the most watchful supervision exercised with regard to moral and intellectual culture.

A few young ladies will be received as boarders.

There will be four Sessions:—

- | | |
|---------------------------------------|-----------------------------------|
| 1st. From September 1 to November 10. | 3rd. From February 2 to April 11. |
| 2nd. " November 11 to February 1. | 4th. " April 12 to June 20. |

Hours of Attendance from 9 a.m. to 1 p.m. The Class will commence on Monday, Sept. 10. For Terms, apply to

MRS. J. LOVELL,

1283 St. Catherine st, facing Phillips sq.

MONTREAL, 27th July, 1877.

A
 GRAPHIC DESCRIPTION
 OF THE
DOMINION OF CANADA,

ALSO

NEWFOUNDLAND, THE NORTH WEST TERRITORIES,
 ANTICOSTI AND LABRADOR ;

WITH AN

A P P E N D I X

CONTAINING INFORMATION OF ESPECIAL INTEREST TO THE EMIGRANT,
 AND A

T A B L E O F R O U T E S,

SHOWING THE PROXIMITY OF THE RAILROAD STATIONS, AND SEA, LAKE AND RIVER PORTS
 TO THE CITIES, TOWNS AND VILLAGES IN

BRITISH NORTH AMERICA.

Price in Paper Covers, 50 Cts.

LOVELL PRINTING AND PUBLISHING CO.,
Publishers.

MONTREAL, July 27, 1877.

DUPONT & DESTREMPEs,

MANUFACTURERS OF

Doors, Windows, Blinds, Counters and Office Desks,

SCROLING, TURNING AND PLANING,

MOULDINGS OF ALL SIZES,

ST. JOHN ST., ST. JOHNS, QUE.

From the Year Book for 1877.

CENSUSES OF CANADA.

The following Tables respecting the British North American Provinces are compiled from the 4th Volume of the Census of Canada for 1871.

POPULATION OF UPPER CANADA.—Now Province of Ontario.

Year.	Total Population.	Males.	Females	Males.		Females.	
				Under 16.	Over 16.	Under 16.	Over 16.
1784	10,000	About this nu	umber of U. E.	L. settled in	the Province	of U. C.	
1806	70,718	Estimate by	Bouchette.	Assessment R	olis.		
1811	77,000	Calculation	made from the				
1824	150,066	79,517	70,549	37,689	41,828	36,203	34,846
1825	167,923	83,810	74,113	40,950	42,860	38,593	35,520
1826	168,379	83,120	78,259	42,994	45,126	40,308	37,951
1827	177,174	93,347	83,827	45,914	47,433	43,605	40,222
1828	186,488	98,444	88,044	48,034	50,410	45,585	42,459
1829	197,815	104,191	93,624	51,294	52,897	48,253	45,371
1830	213,156	112,420	100,736	55,333	57,087	52,093	48,643
1831	236,702	124,281	112,421	61,189	63,092	57,768	54,653
1832	263,654	139,056	124,498	67,551	71,505	63,297	61,201
1833	295,863	156,844	139,019	75,609	81,235	71,029	67,990
1834	321,145	169,806	151,339	81,789	88,017	76,222	75,117
1835	347,359	183,143	164,216	89,346	93,797	83,983	80,233
1836	374,099	197,488	176,611	96,616	100,872	90,391	85,229
1837	397,489	207,299	190,190	103,512	108,797	97,090	93,160
1838	399,422	207,837	191,585	106,675	102,172	99,602	92,583
1839	409,048	212,500	196,528	108,243	104,277	101,269	95,259
1840	432,159	224,640	207,519	113,310	111,330	106,712	100,807
1841	456,988	239,814	218,874	119,359	117,438	112,096	106,795
1842	487,053	259,914	227,139	under 14	over 14	under 14	over 14
1848	725,879	387,631	338,248	115,389	144,525	108,634	118,505
1851-2	952,004	499,067	452,937	167,270	220,381	158,780	179,468
1861	1,396,091	725,575	670,516	under 15	over 15	under 15	over 15
				217,188	281,884	209,401	243,536
				802,631	422,944	293,243	377,273
				under 16	over 16	under 16	over 16
1871	1,620,851	828,590	792,261	366,592	461,998	353,103	439,153

LOWER CANADA.—Now Province of Quebec.

Year.	Popula- tion.	Sexes.		Married and Widowed.		Single and Children.		
		Males.	Females.	Males.	Females.	Males.	Females.	
1766	69,810	28,316	26,794	10,922	10,569	17,394	16,285	14,700 sex not given.
1775	90,000	estimated	— Bouche	tte.				
1784	113,012	54,064	50,759	20,131	19,354	33,933	31,405	8,189 sex not given.
1790	161,311	66,013	63,298	19,375	20,569	42,920	39,604	38,843 sex not given.
1806	250,000	estimated	— Bouche	tte.				
1814	335,000	estimated	— Bouche	tte.				
1822	427,465	estimated	— Bouche	tte.				
1825	479,258	69,893	71,486	35,914	45,600	256,395 children & absentees.
1827	561,050	Statement	by Bouch	ette.				
1831	553,134	184,614	172,503	85,516	85,677	99,098	86,826	196,017 not given.
1844	597,084	346,577	345,514	112,821	113,940	233,756	231,574	4,993 not given.
1852	952,004	449,907	440,294	145,444	150,267	304,523	290,027	
1861	1,111,566	567,865	543,701	180,899	181,769	386,966	381,941	
1871	1,191,516	596,041	595,475	199,789	211,806	396,252	383,670	

NOVA SCOTIA.

Year.	Population.	Sexes.		Married and Widowed.		Single and Children.	
		Males.	Females.	Males.	Females.	Males.	Females.
1767	11,779	6,561	5,218				
1781	12,000	British Popul ation.					
1784	30,000	Arrival of U. E. Loyalists.					
1807	65,000	Estimated.					
1817	81,351	Many of the d etails lost.					
1827	123,630	63,496	60,134				
1837	199,906	Estimated.					
1838	202,575	92,856	88,505	Sex not given	21,214		
1851	276,854	138,612	138,242	(86,556)		(189,998)	
1861	390,857	195,584	165,273	52,200	57,451	113,384	107,822
1871	387,800	193,792	194,008	63,259	69,924	130,533	124,084

NEW BRUNSWICK.—(1784.)

Year.	Population.	Sexes.		White Race.		Coloured Race & Indians		Estimated. Bouchette.
		Males.	Females.	Males.	Females.	Males.	Females.	
1806	35,000							
1824	74,176	40,531	33,645	39,792	32,871	739	774	
1834	119,457	62,593	56,954	61,746	56,088	757	866	
1840	156,162	80,891	75,271	80,063	74,388	828	883	
1851	198,300	99,526	94,274	98,454	93,173	1,072	1,102	
1861	252,047	129,948	122,099	128,593	120,661	1,355	1,438	
1871	285,594	145,888	139,706	(282,490)		(31,04)		

ASSINIBOIA (1812) MANITOBA (1870).

Year.	Popula- tion.	Sexes.		Married and Widowed		Single and Children.		Heads of Families.
		Males.	Females.	Males.	Females.	Males.	Females.	
1831	2,390	1,215	1,175	896	399	819	776	460
1834	3,356	1,752	1,604	556	565	1,196	1,039	605
1835	3,649	1,918	1,731	590	597	1,328	1,134	658
1838	3,966	2,063	1,903	631	630	1,432	1,273	727
1840	4,704	2,458	2,246	712	709	1,746	1,537	805
1843	5,143	2,611	2,532	780	780	1,831	1,752	870
1846	4,871	2,475	2,396	769	766	1,706	1,630	947
1849	5,391	2,714	2,677	873	877	1,841	1,800	1,052
1856	6,691	3,251	3,440	999	1,010	2,252	2,430	1,095
1870	12,228	6,277	5,968	2,042	2,187	4,235	3,681	not given 83

PRINCE EDWARD ISLAND, (1798-1800) Formerly St. John's Island. (1763 annexed to Nova Scotia.)

Year.	Population.	Sexes.		Males.		Females.		17 families. 53 do French. do do do Estimate. Estimate. Indian M. 159, F. 170, not given 44.
		Males.	Females.	Under 16.	Over 16.	Under 16.	Over 16.	
1720	100	Archives de Paris.						
1728	330	Archives de Paris.						
1735	541	Archives de Paris.						
1749	1,000	Haliburton.						
1755	3,000	Haliburton.						
1765	1,400	Haliburton.						
1771	1,270	Haliburton.						
1797	4,500	Sanctioned by various authors.		PRINCE EDWARD ISLAND.				
1806	9,676	Bouchette.						
1822	24,600	Sanctioned by various authors.						
1833	32,292	Do. Do.						
1841	47,042	24,062	22,980	11,580	12,482	11,196	11,784	
1848	62,678	32,056	30,569	15,305	16,501	14,427	15,971	
1855	71,490	Sanctioned by various authors.						
1891	80,857	40,880	39,977	18,220	17,439	22,660	22,538	
1871	94,021	47,121	46,900	20,827	26,294	19,861	27,039	

NEWFOUNDLAND.

Year.	Population.	Sexes.		Married and Widowed.		Single and Children.		Servants.
		Males.	Females.	Males.	Females.	Males.	Females.	Males.
1613	62	Left by Wh		the Island.		(British Empire in America.)		
1622	32	Wintered		in Wynn.		Do. Do. Do.		
1671	73	Wintered		with Capta		(Archives de Paris.)		
1687	693	600	63	42	36	74	27	468
1691	155	94	61	49	27	45	34	French.
1692	377	293 Residents.		2,028 Fishermen.		(De La Potte rie.)		English.
1696	2,321	103	85	44	34	50	51	French.
1698	188	Estimate of English population.		68		42		53
1698	1,500	Estimate of English population.		60		38		68
1705	520	Estimate of English population.		60		38		68
1711	225	Estimate of English population.		60		38		68
1741	6,000	Estimate of English population.		60		38		68
1753	13,000	Given by various authors.		60		38		68
1755	10,244	Given by various authors.		60		38		68
1806	26,505	Given by various authors.		60		38		68
1816	52,672	Given by various authors.		60		38		68
1823	52,157	Given by various authors.		60		38		68
1825	55,719	Given by various authors.		60		38		68
1828	60,088	Given by various authors.		60		38		68
1832	59,280	Given by various authors.		60		38		68
1836	73,705	Given by various authors.		60		38		68
1845	96,295	52,064	44,231
1851	101,600	Estimated.	
1857	122,638	64,268	58,370	18,910	19,868	45,358	37,802	301 servants and fishermen.
1869	146,636	71,144	67,127	22,912	25,432	48,232	41,695	

FIRE ALARM TELEGRAPH BOXES.

F. H. BADGER, Superintendent, City Hall; F. X. Gauthier, 24 Amherst, James-Yuill, 78 Berri, and James Ferns, 49 Campeau, assistant operators.

- 1—Custom house (North corner.) Key in Custom house
- 2—Corner St Jean Baptiste and St Paul sts. Key at 13 St Jean Baptiste st.
- 3—Jacques Cartier sq, (corner St Paul st.) Key in Central Police Station
- 4—St Gabriel st, (Hose Station.) Key in Fire Station
- 5—Corner Notre Dame and St François Xavier sts.
- 6—Corner St Sacrament and St Peter sts. Key at 54 St Sacrament st.
- 7—Corner St Paul and McGill sts. Key at 129 McGill st.
- 8—Corner Youville and Common sts.
- 9—Corner Notre Dame and McGill sts. Key at corner Notre Dame and McGill sts.
- 12—Corner Craig and Chenneville sts, (Central Hose Station.) Key in Station
- 13—Corner Craig st. and St Lambert hill. Key at 41 St Lambert hill
- 14—Corner Vitré and Sanguinet sts. Key at corner Vitré and Sanguinet sts.
- 15—Corner St Lawrence and Lagauchetière sts. Key at 113 St Lawrence
- 16—Corner Dorchester and St Urbain sts. Key at 124 St Urbain
- 17—Corner Bleury and Dorchester sts. Key at 114 Bleury
- 18—Beaver Hall hill. Key at 51 St Radegonde
- 19—St Antoine st, (opposite St Geneviève st.) Key at 25 St Antoine st.
- 21—Corner Brunswick and Dorchester sts. Key at 23 Brunswick st.
- 23—St Catherine st, (Hose Station.) Key in Station
- 24—Corner St Lawrence and St Catherine sts. Key at 247 St Lawrence st.
- 25—German st, near Dorchester st.
- 26—Corner St Catherine and St Denis sts. Key at corner St Denis and St Catherine sts.
- 27—Corner German and Ontario sts. Key at Fire Station
- 28—Corner St Lawrence and Sherbrooke sts. Key at 533 Sherbrooke st.
- 29—Corner St George and Sherbrooke sts. Key at 641 Sherbrooke st.
- 31—Corner Union av and Sherbrooke st. Key at 766 Sherbrooke st.
- 32—Corner McGill College av and St Catherine st. Key at 17 McGill College av
- 34—Guilbault's Garden. Key at 585 St Lawrence st.
- 35—Corner Prince Arthur and Shuter sts.
- 36—Corner King and Common sts. Key at 5 King st.
- 37—Corner Duke and Ottawa sts. Key at 45 Ottawa st.
- 38—Corner Dupré lane and St Maurice sts. Key at St Maurice st. cor Dupré lane
- 39—Corner St Antoine and Cemetery sts. Key at 107 St Antoine st.
- 41—Chaboillez sq. (Hose Station.) Key in Station
- 42—Wellington st. (Hose Station.) Key in Station
- 43—Mill st., (Lyman's mills.) Key at Montreal Warehousing Co.'s mills
- 45—Corner Wellington and McCord sts. Key at 262 Wellington st.
- 46—Corner Colborne and Ottawa sts. Key at Colborne st. cor Ottawa st.
- 47—Corner St Joseph and McCord sts. Key at St Joseph st. cor McCord st.
- 48—Corner St Antoine and Mountain sts. Key at St Antoine st. cor Mountain st.
- 49—Corner St Catherine and Mountain sts. Key at 283 Mountain st.
- 51—Corner Sherbrooke and Peel sts. Key at 903 Sherbrooke st.
- 52—Corner St Antoine and Guy sts. Key at St Antoine st. cor Guy st.
- 53—Corner St Martin and St Bonaventure sts. Key at 489 St Bonaventure st.
- 54—Corner St Joseph and Canning sts. Key at 690 and 694 St Joseph st.
- 56—Corner Fulford and Coursol sts.
- 57—Corner William and Seigneurs sts. Key at Glenora mills and at Weaver's
- 58—Corner St Matthew and St Catherine sts.

- 59—Grey Nunnery, Guy st.
 61—Redpath's Sugar Refinery. Key at Sugar Refinery
 62—St Gabriel Market, (Hose Station.) Key in Station
 63—Grand Trunk works, (Point St Charles). Key at Eastern Telegraph office, Grand Trunk works
 64—Corner Notre Dame and Bonsecours sts. Key at 17 Bonsecours st.
 65—Dalhousie sq. (Hose Station.) Key in Station
 67—Corner Wolfe and St Mary sts. Key at 508 St Mary st.
 68—Corner Roy and Drolet sts. Key at 442 St Denis st.
 71—St George's Schoolhouse, Stanley st.
 72—Corner Craig and Visitation sts.
 73—Corner Cadioux and Courville sts.
 74—Corner Dorchester and St André sts. Key at 121 Campeau st.
 75—Corner Mignonne and St André sts. Key at St André st. cor Mignonne st.
 76—Corner Amherst and Ontario sts. Key at Amherst st. cor Ontario st.
 78—Corner Seigneurs and St Patrick sts.
 81—Corner Robin and Visitation sts. Key at Robin lane cor Visitation st.

- 82—Corner St Catherine and Panet sts. Key at St Catherine st. cor Panet st.
 83—Corner Sydenham and Dorchester sts.
 84—Corner Logan and Seaton sts.
 85—Crevier Saw mill, Ontario st.
 86—Corner Congregation and Wellington sts.
 87—Corner Menai and Forfar sts.
 91—Corner Craig and Gain sts. (Hose Station)
 92—Corner St Mary and Dufresne sts. Key at St Mary st. cor Dufresne st.
 93—Corner Ontario and Fullum sts. Key at 242 Parthenais st.
 94—Corner Berri and Dubord sts.
 95—Gas works, Hochelaga
 96—Rolling mills, St Joseph st.
 97—Shedden Co.'s stables, William st

In each of the above stations there are three fire guardians, permanently, in the east and west fire district, viz., 3, 4, 7, 8, & 9, and four in each of the others viz., 1, 2, 5, & 6, who are called out in three separate sections, according to the three fire district divisions of the city; but also, when required, act as one body. This is done by calling one section by the first alarm, two sections by a second alarm, the remaining one by a third; and, if not required, one single blow is given on the Church bells, signifying the immediate danger is over and therefore not wanted.

BLANK

ACCOUNT BOOKS

MANUFACTURED BY

Lovell Printing and Publishing Company,

MONTREAL.

EDUCATION.

MRS. LOVELL purposes forming a CLASS for the instruction of YOUNG LADIES who, having been taught the elementary branches, desire to pursue a course of study that will tend thoroughly to train their minds.

The Class will be conducted in a similar manner to that so successfully carried on by the late MISS LYMAN, with whom MRS. LOVELL was a pupil.

As none will be received under fifteen years of age, the number will be limited, consequently, each pupil will have the advantage of particular personal attention.

MRS. LOVELL'S object is not so much to impart knowledge to those under her care, as so to train their minds that they can make acquisitions by themselves, and thus imbue them with a taste for Literature that may induce its pursuit in after-life.

Several hours during the week will be devoted to conversation on subjects previously selected, with the view of enabling the pupils to express their thoughts with ease and fluency.

The course of study will include HISTORY, ENGLISH LITERATURE, COMPOSITION, RHETORIC, MATHEMATICS, and reading aloud from BRITISH CLASSICS and other standard works.

LATIN, FRENCH and GERMAN will be taught by Masters.

MUSIC will receive special attention. In addition to professional instruction, MRS. LOVELL purposes devoting one evening weekly to rehearsals among the pupils.

While MRS. LOVELL attaches great value to the higher branches of education, she hopes, from experience, to be able to convince her pupils that it is essential for the regulation and happiness of life to cultivate the knowledge of practical duties.

The BIBLE will be studied as a means of moulding the character and of training the heart.

MRS. LOVELL'S aim will be to supply to her pupils, as far as possible, the gentle restraints and influences of home.

Few rules will be given, but a sense of responsibility to a Higher Power will be inculcated, and the most watchful supervision exercised with regard to moral and intellectual culture.

A few young ladies will be received as boarders.

There will be four Sessions:—

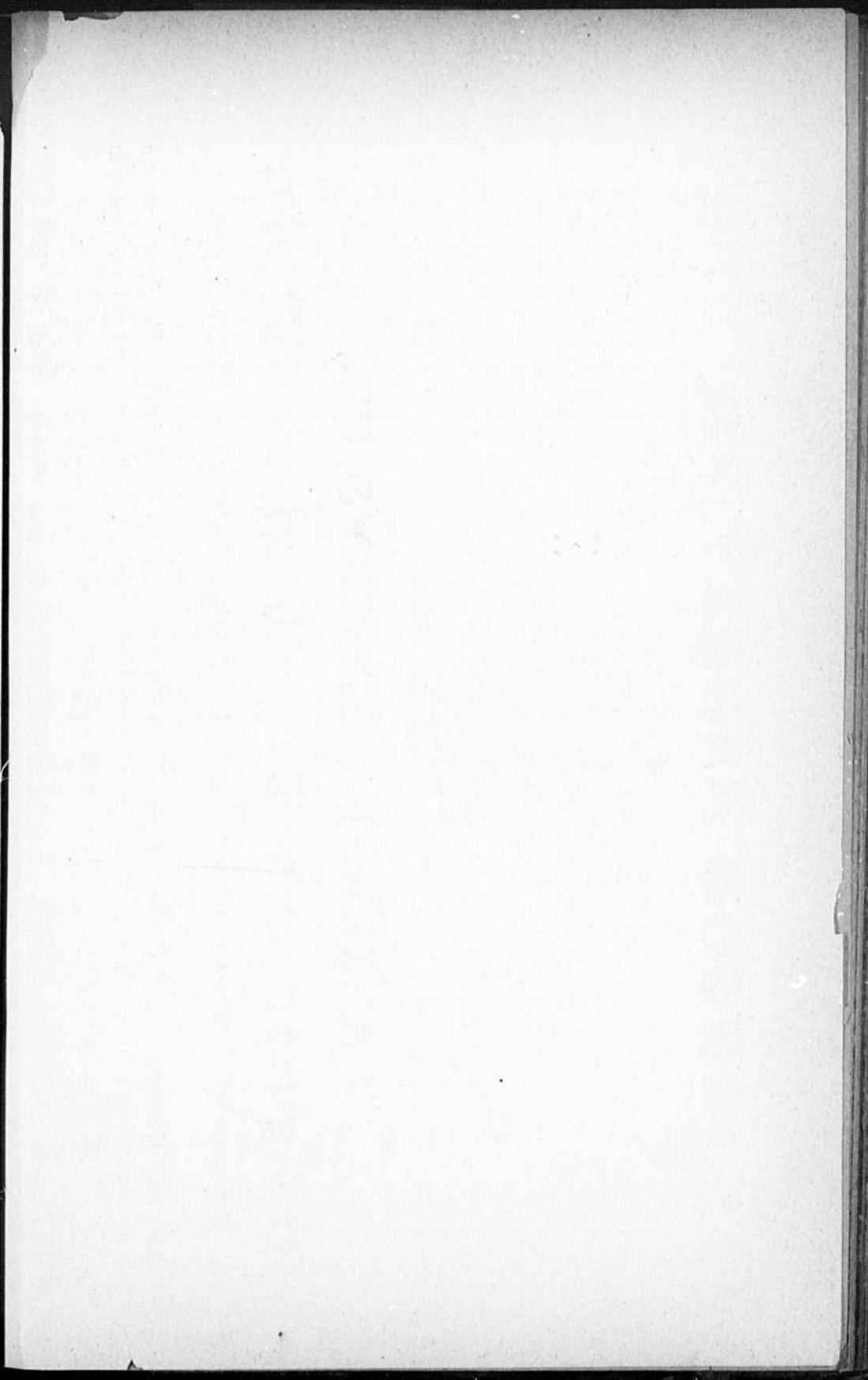
1st. From September 1 to November 10.		3rd. From February 2 to April 11.
2nd. " November 11 to February 1.		4th. " April 12 to June 20.

Hours of Attendance from 9 a.m. to 1 p.m. The Class will commence on Monday, Sept. 10. For Terms, apply to

MRS. J. LOVELL,

1283 St. Catherine st, facing Phillips sq.

MONTREAL, 27th July, 1877.



WOOD ENGRAVING.



WALKER, PALLASCIO & CO.,
Designers and Engravers on Wood,

Corner of Craig and Bleury Streets, Montreal.—(Entrance on Bleury St.)

Our facilities now exceed those of all the Wood Engravers in the Dominion combined, and we are enabled to give superior work at a great reduction on former prices. As we do not canvass, parties requiring Wood Engraving will do well to obtain estimates from us.

J. H. WALKER.

PETRUS PALLASCIO.

LOVELL'S CLASSIFIED

BUSINESS DIRECTORY

FOR 1877-78,

(CONTAINING THE

NAMES, BUSINESS AND ADDRESS

OF EVERY

Firm or Person doing Business in Montreal, . . .)

INCLUDING THE

CLERICAL, MEDICAL, AND LEGAL PROFESSIONS,

THE

UNIVERSITIES, COLLEGES, ACADEMIES, AND SCHOOLS

WITH THE NAMES OF THEIR PROFESSORS AND TEACHERS;

TARIFF OF CUSTOMS, POSTAL REGULATIONS,

&c., &c.

Corrected up to 1st August, 1877.

BIBLIOTHEQUE
BANK OF MONTREAL
Price \$1.00.

Montreal :

LOVELL PRINTING AND PUBLISHING COMPANY.

LOVELL'S CLASSIFIED BUSINESS DIRECTORY

WILL BE PUBLISHED ANNUALLY.

Price, \$1.00.

CONTENTS.

Classified Business Directory.....	67
General Index to Business Heads of every Firm or Person in Business in Montreal.....	29
Index to Advertisers Names.....	41
Guide to Streets.....	53
Index to Miscellaneous.....	47
Census Returns.....	18
Fire Alarm Telegraph Boxes.....	20
Preface.....	27

PER
Z-3169

3100000000
3090000000

Entered according to Act of Parliament, in the year one thousand eight hundred and seventy-seven, by JOHN LOVELL, in the office of the Minister of Agriculture and Statistics of the Dominion of Canada.

PREFACE.

It has been the custom hitherto, in LOVELL'S MONTREAL DIRECTORY, to classify, under their respective trades, business, or professions, *all Subscribers* to and *Advertisers* in the Directory, and *only these*, as the classification of all names would add too greatly to the bulk of the book. The classification was, therefore, exceedingly incomplete, and by no means served to shew at a glance—what is often required—the whole list of persons engaged in a given business, trade, or profession. Such a Directory having been often asked for, it was determined to omit from Lovell's Montreal Directory the partial and unsatisfactory classification hitherto given, and issue a distinct Directory, which should contain *classification* of all persons engaged in professions, trades, or business, in Montreal. The result of that determination is herewith submitted, and the Publishers have no doubt that LOVELL'S CLASSIFIED BUSINESS DIRECTORY will meet the approval of its patrons. It has been the endeavor of the Publishers to embody in the Directory all Miscellaneous Information ordinarily required by business men, and this has been corrected up to date of publication.

The following Statistics, noted in compiling Lovell's Montreal Directory for 1877-78, may not prove uninteresting :

Number of names in 1877-78 edition which remain as in 1876-77 edition...	12,494
New names in Directory of 1877-78 (not in previous edition).....	12,976
Number of removals since issue of 1876-77 edition.....	7,052
Total names in Lovell's Montreal Directory for 1877-78.....	32,522

Names erased in 1877-78 (which appeared in previous year).....	12,336
Number of unoccupied houses in Montreal on May 14, 1877.....	1,441

MONTREAL, August 1, 1877.

Show Cards & Window Tickets.

SIGNS, SHADES, BANNERS,

Plain and Ornamental Signs,

GOLD SIGNS,

PLAIN, CARVED AND EMBOSSED,

ELABORATE GLASS SIGNS,

Sunday School & Society Banners & Flags,

SHIELD SIGNS

On Japanned Iron and Zinc,

Pictorial Transparencies,

For Holidays and Advertisements,

Outside Lettering on Buildings.

WINDOW SHADE MAKERS,

WINDOW TICKETS, \$1.00 PER 100,

Suitable to every trade,

ILLUMINATED AND CRYSTAL SHOW CARDS,

In every conceivable Design.

J. S. CARTNEY,

No. 31 ST. LAMBERT HILL,

MONTREAL.