



VISITOR'S GUIDE 2016

LIVE THE EXPERIENCE

AT THE SEA
ON LAND

The Saguenay–St. Lawrence Marine Park covers an area of 1,245 km². The park protects a marine area endowed with an exceptional diversity of wildlife and plant life.

Renowned for its scenic landscapes, the park is also one of the world's best places for whale watching. To believe it, you've got to live it, at sea and on land!

THE “MUST-DOS”

WHALE-WATCHING BY BOAT

What fun it is to hear a whale blow or catch a glimpse of this incredible animal at the water's surface! From aboard a boat, take in the fascinating spectacle of marine animals. Get ready for a seaside experience in the kingdom of whales, seals and seabirds. Select the type of excursion best suited to you. *See pages 3 to 5.*

WHALE-WATCHING FROM SHORE

While out walking, biking or driving along the marine park shorelines, keep your eyes peeled and your ears open! You might well glimpse or hear belugas, minke or fin whales as well as harbour porpoises all hugging the coast. Some surprises in store for you in a range of locations, starting from Baie-Sainte-Catherine and extending to Les Escoumins, with the Sacré-Coeur sector in between. *See the Discovery Network section (pages 8 to 13).*

DISCOVERY ACTIVITIES

To satisfy your thirst for knowledge, take part in any one of several activities on offer. Enthusiastic guide-interpreters and fascinating exhibits will give you some valuable insights into the many facets of the marine park. These helpful resources will tell you the full story of marine life, ranging from starfish to sharks, along with the history of local lighthouses and Indigenous populations. *See the Discovery Network (pages 8 to 14).*

KAYAKING

Whether you go out paddling with a professional guide or on your own, sea-kayaking is a great way to appreciate the marine park's beauty and sprawling spaces. When prepared with care, a kayaking outing offers you the pleasures of the great outdoors in complete safety. For an excursion lasting several days, take advantage of the campsites located along the edges of the park. *See pages 3 and 6.*

SPECTACULAR VISTAS

On foot or by car or bicycle, discover the numerous viewpoints out over the Saguenay Fjord and the St. Lawrence Estuary. Once you begin to admire the sights along the shoreline, listen to the crash of waves on the beach and breathe in the salt air; it won't be long before you've left the daily grind behind you. Located in the immediate vicinity of the marine park, *the Discovery Network guarantees you a real change of scenery (pages 8 to 14).*



PURPOSE OF THE MARINE PARK

Recognizing the importance of protecting the environment, wildlife, plant life, and natural resources of a part of the Saguenay Fjord and St. Lawrence River estuary, the governments of Quebec and Canada created, together with public support, the Saguenay–St. Lawrence Marine Park.

The Marine Park's mission is to increase ecosystem protection levels for conservation purposes, for the benefit of present and future generations, while encouraging its use for educational, recreational and scientific purposes.

Activities in the Marine Park are regulated with a view to ensuring the sustainable use of this area and its resources. Regional stakeholders contribute to achieving the marine park's objectives.

YOUR SAFETY: YOUR RESPONSIBILITY

Outdoor activities can involve certain risks. Make sure that you have the skills and abilities required for the activity you choose. It is important to know the risks inherent to this activity, to respect your limits and to use appropriate equipment.



6

Whether you are looking for adventure or a quiet tour on the water, you will be delighted. Take the full measure of wide open spaces. Each sea outing is unique!

EXPERIENCE THE SEA!

WHAT IS THE BEST TIME TO SEE THE WHALES?

From early May to the end of October. The chances seeing whales in the marine park are good during this period at any time of the day.

A GUIDED AND SUPERVISED EXCURSION

The companies in this guide hold a marine excursion permit in the Saguenay–St. Lawrence Marine Park. Marine tour captains and guides have sound knowledge of the marine environment. They can put that knowledge at your service and answer your questions.

WHAT BOAT TO CHOOSE?

Contact the companies shown in this guide. Their personnel will help you decide what product will best suit your needs. Whatever type of boat you choose, the rules governing approach are the same. Your captain will stay within regulated speeds and respect the approach distances to be maintained in the vicinity of whales. If whales unexpectedly emerge near the boat, your captain will know what to do.

When sea-kayaking, your guide will make sure you keep to the proper distances and navigate in complete safety.

WHAT YOU NEED

Even during summer, it is colder on water than on land. Warm, comfortable clothing is highly recommended.

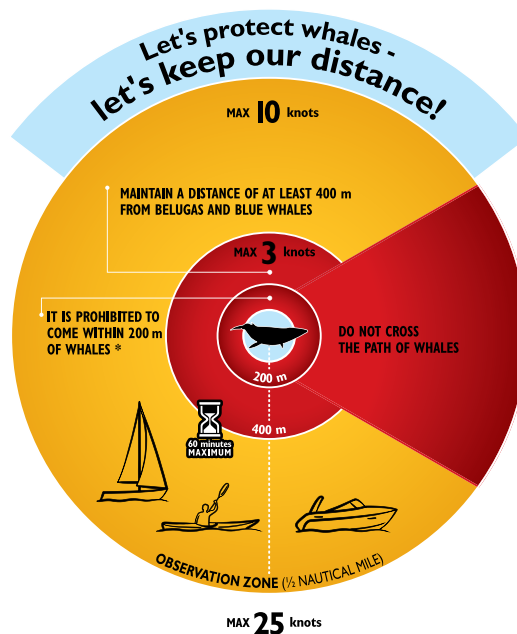
For outings on a boat, we suggest:

- Long pants and closed shoes
- Hat, gloves and scarf
- Windbreaker or raincoat
- Sunscreen and sunglasses
- Camera
- Binoculars

Marine Activities in the Saguenay–St. Lawrence Marine Park Regulations

Developed in partnership with the marine tour companies, the regulations provide a framework for the activities practiced in the Marine Park. The regulations indicate the maximum navigation speed permitted throughout the park, as well as the distances and speeds to be respected when marine mammals are present (see table). All watercraft in the Marine Park must comply with these regulations.

Boat captains and sea-kayaking guides of organizations with marine tour permits must pass the Parks Canada regulations course.



DISTANCE

1/2 nautical mile = 926 meters

Speed

3 knots = 5.56 km/h = 3.45 mph

10 knots = 18.52 km/h = 11.50 mph

25 knots = 46.30 km/h = 28.70 mph

In the event of any disparity, the text of the Regulations shall take precedence over the information presented in this guide.

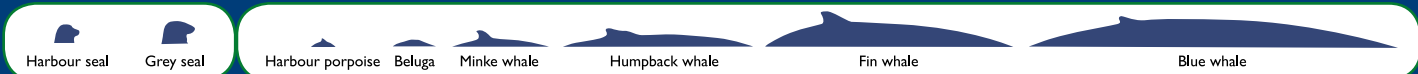
* Under certain conditions, marine tour permit-holders (i.e., whale watching vessels) are allowed to come as close as 100 m of whales other than belugas and blue whales.

Did you know...?

To learn more about whales, visit whalesonline.org

That four large migrating whales can be seen in the Marine Park in the summer: they are the minke whale, the fin whale, the humpback whale and the blue whale.

The beluga whale and harbour seal are the only marine mammals that spend the entire year in the St. Lawrence Estuary. Can you tell which is which?



EXPERIENCE THE SEA BY BOAT



The Eco-Whale Alliance is formed by seven whale-watching tour companies, the Group for Research and Education on Marine Mammals (GREMM), Parks Canada and Parcs Québec. Its members are committed to responsible whale-watching practices in the Saguenay–St. Lawrence Marine Park.

The companies belonging to the Alliance contribute to the Eco-Whale Fund, which finances research and education projects on the whales of the St. Lawrence.

You can obtain the Catalogue des grands rorquals dans le parc marin du Saguenay–Saint-Laurent (Catalogue of large whales in the Saguenay–St. Lawrence Marine Park – available in French only) at most shops of members of the Eco-Whale Alliance. 100% of profits will go the Eco-Whale Fund!

Choose a Proud member of the Eco-Whale Alliance for your next excursion!



Aventure Écotourisme Québec,
www.aventure-ecotourisme.qc.ca

Croisières AML

| 800 563-4643

croisieresaml.com



Lose yourself in a different way with Croisières AML! Live an exceptional experience on board the best observation boats in Canada in the company of certified bilingual guide-naturalists who will let you feel their passion for marine mammals!

Leave from Tadoussac, Baie-Sainte-Catherine, Rivière-du-Loup

Croisière Neptune

| 877 7NEPTUNE

croisieresneptune.net

On board our glass-topped boat, discover marine mammals in the company of our experienced captains and our bilingual naturalist. People of all ages are admitted. A family-owned business for 26 years.

Leave from Les Escoumins

Croisière Personnalisée Saguenay

418 608-8058 or 418 272-2739

croisieresaguenay.ca



For 26 years, customized high-end cruises focused on contemplation, according to a private or combined approach (6 people maximum), thus ensuring you a personal, distinctive and rewarding experience on the majestic Saguenay Fjord.

Leave from L'Anse-Saint-Jean

Les Croisières du Fjord

418 543-7630 /

| 800 363-7248

croisieresdufjord.com



In cruise or shuttle format, the Croisières du Fjord takes you on the most breathtaking route to discover the Saguenay Fjord, its capes and statue, villages, their histories and attractions.

Leave from La Baie, Sainte-Rose-du-Nord, Rivière-Éternité, L'Anse-Saint-Jean and Tadoussac

Société Duvetnor

| 877 867-1660

pharedupot.com
ileauxlievres.com

Guided and informative excursions based on observation and discovery of the St. Lawrence. Remarkable biological diversity, seal haulouts, cliffs teeming with sea birds, belugas and visits to historic sites.

Leave from Rivière-du-Loup



EXPERIENCE THE SEA BY ZODIAC BOAT

Croisières AML

| 800 563-4643

croisieresaml.com



For an outstanding nature experience aboard one of our zodiacs for 24 and 48 passengers. In the company of certified bilingual naturalist guides, go into the whales' compelling environment. Ideal for thrill seekers!

Leave from Tadoussac and Baie-Sainte-Catherine

Croisières Charlevoix

| 866 638-1483

baleines.ca



Be at the forefront and discover the remarkable wildlife of the St. Lawrence estuary and the breathtaking landscapes of Charlevoix in the company of our experienced guide-interpreters.

Leave from Saint-Siméon

Croisière Escoumins

| 866 baleine / 418 233-4061

croisierebaleine.ca

Set out on an adventure to the paradise of whales aboard a new generation of zodiac type craft, one that is safer and more ecological. Experienced captains, theme cruises, whales guaranteed or your money back.

Leave from the private des Escoumins quay

Croisières Essipit

| 888 868-6666 / 418 232-6778

vacancesessipit.com



Personalized whale watching cruises aboard inflatable boats. Our experienced guides will share their knowledge of the marine environment. Simply Unforgettable, respect and protect whales. Kue! Welcome!

Leave from Les Bergeronnes

Croisières Neptune

| 877 7NEPTUNE

croisieresneptune.net

Come aboard our latest generation zodiacs to discover marine mammals. Safety and comfort are guaranteed with experienced captains. Complete high quality equipment is provided. A family-owned business for 26 years.

Leave from Les Escoumins

Les Écumeurs du Saint-Laurent

| 888 817-9999

lesecumeurs.com



Écumeurs offers you a personalized excursion for watching whales and other mammals in the marine park. On board our 12 passenger Zodiac type boats, you'll enjoy a unique and exciting experience.

Leave from Les Escoumins

Organisation - Le Québec Hors Circuits

418 579-8763

organisation.com



Charter our 12-passenger Zodiac for a personalized half-day or full-day excursion. Discover the exceptional beaches and landscapes of the Saguenay Fjord or take a trip to see the whales.

Leave from La Baie, Sainte-Rose-du-Nord, L'Anse-Saint-Jean and Petit-Saguenay

Otis excursions

418 235-4197 / 418 235-4537

otisexcursions.com



Take an intimate and wonderful cruise on the St. Lawrence to observe whales and other marine mammals on board our quiet, ecological, 12 or 36-passenger zodiac boats.

Leave from Tadoussac

Parc national du Fjord-du-Saguenay

| 800 665-6527

parcsquebec.com



On departing from one of the most beautiful bays in the fjord, take a place on the inflatable and start the adventure with our experienced naturalist guides. Experience an incursion into a protected ecosystem with a biodiversity that is unique in the world.

Leave from the Baie-Éternité quay



EXPERIENCE THE SEA BY KAYAK

Centre de vacances – Ferme 5 étoiles

418 236-4833 / 1 877 236-4551 | ferme5etoiles.com



Lovers of nature and water activities, experience the Saguenay Fjord with us. Discover the beauty of the fjord and its steep mountains by kayak: "Sunset" introduction, half-day or expedition (1 to 5 days).

Leave from L'Anse-de-Roche at Sacré-Coeur

Fjord en Kayak

1 866 725-2925 | fjordenkayak.ca



"Canadian Signature Experience." Short, guided excursions on the fjord (children from 3 years of age) and multi-day expeditions with cuisine. Distinctions: small groups, fibreglass kayaks, personalized service, skilled guides.

Leave from L'Anse-Saint-Jean

Katabatik – Aventure dans Charlevoix

1 800 453-4850 / 418 665-2332 | katabatik.ca



Specialists in guided sea kayaking excursions, our guides are dedicated to the St. Lawrence upper estuary. Abundant marine wildlife, amazing geomorphology, the Charlevoix coasts are a paradise for paddlers.

Leave from Baie-Saint-Paul, Cap-à-l'Aigle, Baie-des-Rochers

ARE YOU PLANNING A SEAGOING ACTIVITY WITHOUT A CERTIFIED GUIDE?

Before you set out, find out about the directives you need to follow and the equipment you need to bring to make sure your outing is safe and enjoyable.

Consult the www.canot-kayak.qc.ca website.

Indeed, weather conditions change rapidly and strong marine currents could make your outing hazardous. For your safety, stay close to the shoreline so as to always keep it in sight, particularly under fog conditions. On account of marine traffic, avoid making "shore-to-shore" crossings.

Kayak Aventure

418 514-0025 | kayakaventure.com

Kayak excursions with a professional and experienced guide to where the Saguenay Fjord meets the St. Lawrence River. Half-day initiation and personalized outings. Groups of up to six persons.

Leave from the Baie-Sainte-Catherine beach

Kayaks du Paradis

418 232-6237 | campingparadismarin.com

Guided tours with a focus on safety and nature discovery. This adventure sport will give you the feeling that wildlife is so close you can touch it!

Leave from Les Bergeronnes

Mer et Monde Écotours

1 866 637-6663 | meretmonde.ca



An intimate experience linking humans to nature, where the sea kayak is the preferred tool for observation of the marine environment. Our professional team invites you to experience unforgettable moments.

Leave from Les Bergeronnes and Tadoussac

Organisation – Le Québec Hors Circuits

418 579-8763 | organisation.com



Enjoy a guided expedition lasting several days with our professional guides. Flexible departures from May to September. Groups of 2 or more persons with accommodation service and local produce on the menu.

Leave from La Baie, Sainte-Rose-du-Nord and Petit-Saguenay

Parc national du Fjord-du-Saguenay

1 800 665-6527 | parcsquebec.com



On departing from one of the most beautiful bays in the fjord, take a place on the inflatable and start the adventure with our experienced naturalist guides. Experience an incursion into a protected ecosystem with a biodiversity that is unique in the world.

Leave from the Baie-Éternité quay



EXPERIENCE ON A SAILING VESSEL

DAMACHA – ÉCOLE DE VOILE CROISIÈRE

1 866 278-5355
418 434-2435
damacha.qc.ca

Damacha trains sailboat sailors of any level. From Tadoussac, cruise the fjord, the estuary and the gulf. Life on board a sailboat in the splendour of nature as it was in the days of the discoverers of this world.

Leave from Tadoussac

VOILE MERCATOR



1 888 674-9309
voilemercator.com

Navigate by sail on the St. Lawrence and the Saguenay Fjord. 3 to 7 hour initiation excursions and 2 to 5 day sailing courses. Accredited by Sail Canada and Aventure Écotourisme Québec.

Leave from La Baie, Rivière-Éternité, L'Anse-Saint-Jean, Tadoussac



KAYAKERS AND RECREATIONAL BOATERS: TAKE PART IN THE PROTECTION EFFORT!

Belugas and Blue whales are endangered: the current number of animals is insufficient to ensure the survival of their population. Each animal is important and must be able to feed and rest without being disturbed. You have the privilege of seeing them in their habitat and of appreciating their natural behaviour. Respect a distance of at least 400 metres.



11 Photo taken with respect to the aforementioned regulations.

CAUTION!

Beluga whales give birth to their young in the summer, especially in July and August. This is a critical period for the survival of the young and their mothers. The females need tranquility to raise their young, to feed them and to rest. Even if the temptation is strong, do not approach them whether you're kayaking, on a sailboat or aboard a motorboat. Thank you for your cooperation.

A regulation (page 3) is in force throughout the marine park, and park wardens provide surveillance. Even outside the marine park, it is forbidden to disturb marine mammals.

AVOID SAILING NEAR THE ISLANDS OF THE UPPER ESTUARY

(AUX LIÈVRES,
AUX FRAISES, DU
POT-À-L'EAU-DE-
VIE, ROUGE)
AND NEAR
SAINTE-
MARGUERITE
BAY
(SAGUENAY).



12

FREE!

Get your copy of the **Saguenay-St. Lawrence Marine Park Boater's Guide**. Ask for it in one of the marinas or on marinepark.qc.ca

- Printed on rugged, waterproof paper
- Features a map of the marine park
- Contains a host of practical information



UNDERWATER DIVING AND SNORKELING

Dive into the heart of magnificently coloured gardens and discover animal life below the surface. The cold salt waters of the St. Lawrence estuary are home to varied, impressive marine life.

PARADIS MARIN

4, chemin Émile-Boulianne, Les Bergeronnes
Tél. : 418 232-6237

Services on location: Launching site, showers and washrooms.

MARINE ENVIRONMENT DISCOVERY CENTRE (PARKS CANADA)

Diving base operated by the Fédération québécoise des activités subaquatiques

41, rue des Pilotes, Les Escoumins
Tél. : 418 233-4025

Find the schedule on fqas.qc.ca

Services on location: Equipment rentals, air refills, guided dives, customized packages, launching platforms, hot-water showers, and washrooms.

13

THE SAGUENAY-ST. LAWRENCE MARINE PARK DISCOVERY NETWORK



LEGEND

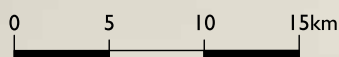
-  Marine Park information site
-  Municipality
-  Shuttle
-  Ferryboat
-  Hiking trail
-  Hiking and cycling trail
-  First-Nation community
-  Saguenay-St. Lawrence Marine Park
-  Parc national du Fjord-du-Saguenay
-  Other protected areas

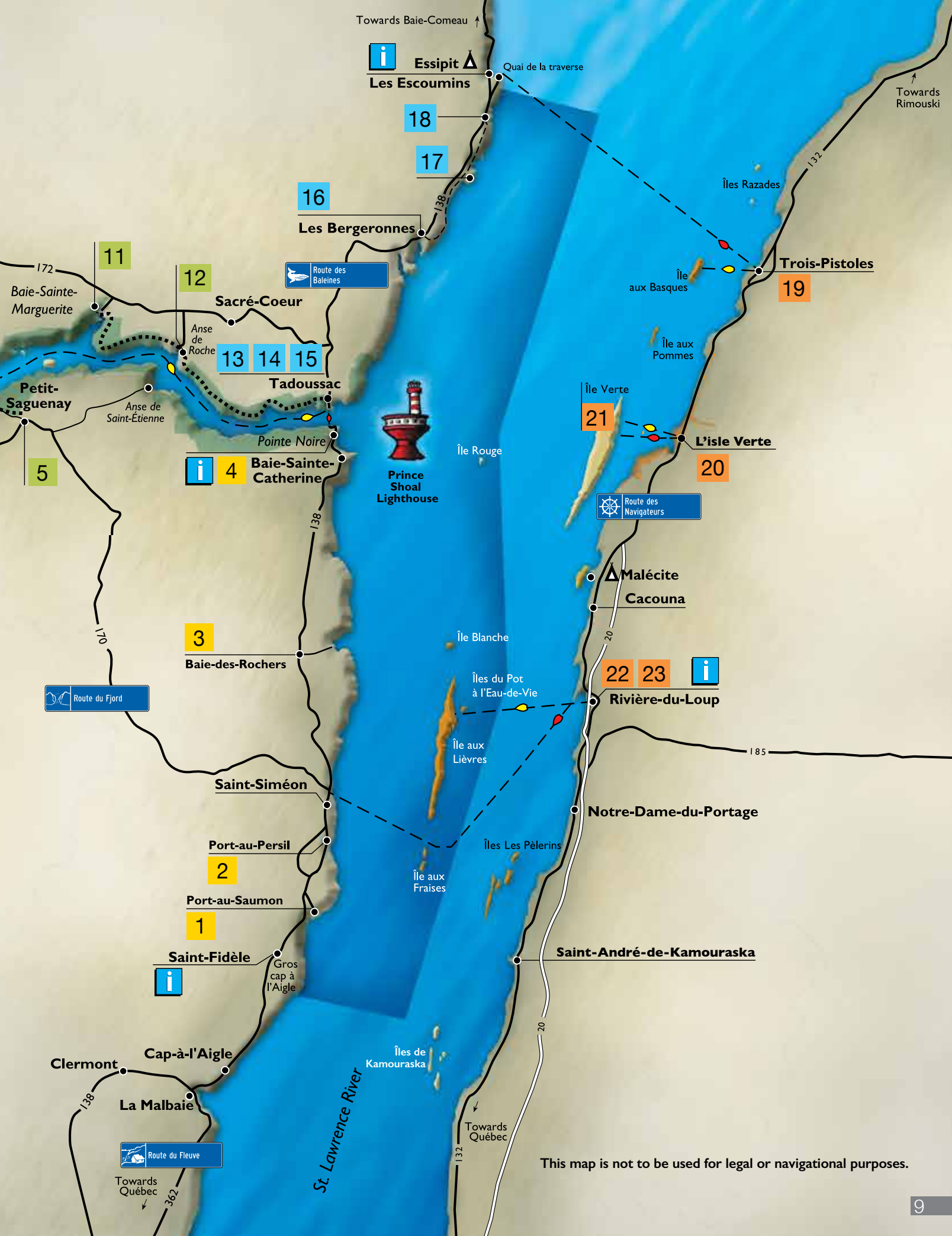
DISCOVERY SITE

-  Saguenay
-  Côte-Nord
-  Bas-Saint-Laurent
-  Charlevoix

23 ways to discover the Marine Park: meet some genuinely gung-ho people, take in some fascinating exhibits, enjoy some fabulous outings and explore the great outdoors.

FIND THE COMPLETE DESCRIPTION ON PAGES 10 TO 14.





This map is not to be used for legal or navigational purposes.

CENTRE ÉCOLOGIQUE DE PORT-AU-SAUMON



Centre écologique de Port-au-Saumon

1

3330, boul. Malcolm-Fraser
(route 138)
La Malbaie
(Saint-Fidèle sector)

Tel. : 418 434-2209
1 877 434-2209
cepas.qc.ca

Latitude : 47.765055
Longitude : -69.952247

Schedule

June 26 to August 19

Admission

Foothpath
(10 AM and 2 PM)
Adult: \$8
Child (5 to 12): \$5
Touch tank (10 AM, 11 AM,
2 PM, 3 PM)
Adult: \$5
Child: \$3

Discover a variety of marine and forest ecosystems; explore a crevasse and a 15-metre waterfall; see and touch various marine organisms.



PORT-AU-PERSIL



GOxplore / Port-au-Persil

2

555, chemin de Port-au-Persil
Saint-Siméon
Municipalité de Saint-Siméon

Tel. : 418 620-5010
saintsimeon.ca

Latitude : 47.807676
Longitude : -69.899472

Schedule

All summer long

Admission

Free

A haven of peace in phase with the tides, Port-au-Persil is a member of the "Association des plus beaux villages du Québec" (Quebec's most beautiful towns).



PARC MUNICIPAL DE LA BAIE-DES-ROCHERS



Parks Canada / J.-L. Provencier

3

Baie-des-Rochers
Municipalité de Saint-Siméon

Tel. : 418 620-5010
saintsimeon.ca

Latitude : 47.953704
Longitude : -69.81283

Schedule

Spring to fall

Admission

Free

Walk along one of the marked trails and take time out to enjoy the delightful surroundings and stupendous panoramas of the St. Lawrence Estuary.



POINTE-NOIRE INTERPRETATION AND OBSERVATION CENTRE



Parks Canada / E. Lajeunesse

4

141, route 138
Baie-Sainte-Catherine

Tel. : 418 237-4383 /
418 235-4703
(off-season)
parkscanada.gc.ca/saguenay

Latitude : 48.122849
Longitude : -69.71823

Schedule

June 18 to Sept. 5:
Everyday
Sept. 6 to Oct. 10 (incl.):
Friday to Sunday and holiday.

Admission

Family/Group of up to seven people: \$14.70. Free of charge for children of 5 years and under. Possibility to upgrade your entry fee for a same day visit at 3 Parks Canada Centres.

Enjoy the exceptional viewing points on the marine park! Interact with the guide-interpretors while admiring the whales and the scenery. Browse the exhibition in the lightkeeper's house.



parkscanada.gc.ca

PETIT-SAGUENAY



Laurent Lavoie

5

Tourist information
61, rue Dumas
Petit-Saguenay
Tel. : 418 272-3219
petit-saguenay.com

Latitude : 48.209261
Longitude : -70.067463

Schedule

May 15 to November 1

Admission

Free

Discover the fjord at two exceptional locations: the wharf, with its magical sunsets and Saint-Etienne beach, a haven of peace living to the rhythm of the tides.



L'ANSE-SAINT-JEAN



L'Anse-Saint-Jean / J. Grosse

6

3, rue du Couvent
L'Anse-Saint-Jean
Tel. : 418 272-2633
lanse-saint-jean.ca

Latitude : 48.233554
Longitude : -70.205869

Visitor kiosk

End of June to mid-September: Everyday
Tel. : 418 272-2974

Lying on the shores of the majestic Saguenay fjord, experience the wonder of this picturesque village thanks to the many outdoor activities and services available year round.



PARC NATIONAL DU FJORD-DU-SAGUENAY BAIE-ÉTERNITÉ SECTOR



Parc national du Fjord-du-Saguenay / B.Richard

7

91, rue Notre-Dame
Rivière-Éternité
Tel.: 1 800 665-6527 /
418 272-1556
parcsquebec.com

Latitude : 48.2576
Longitude : -70.4016

Schedule
May 20 to october 10

Admission
Admission fee charged

In the crevices of the cliffs of the fjord, choose among a variety of outdoor activities on land, at sea and in the air! *Try the Via ferrata des Géants, an amazing course!*



MUSÉE DU FJORD



Musée du Fjord

8

3346, boul. de la Grande-Baie Sud
Saguenay (La Baie)
Tel.: 418 697-5077
1 866 697-5077
museedufjord.com

Latitude : 48.317447
Longitude : -70.853845

Schedule
June 24 to September 5:
Every day September 6
to June 23: Tuesday to
Sunday

Admission
Adults: \$15
Children (6 to 17): \$8.50
Rates for families and
groups

Winner of 9 excellence awards, the Fjord Museum invites you to discover the Saguenay Fjord and the history of its people through a unique multimedia experience and exciting exhibitions.



CENTRE D'INTERPRÉTATION DES BATTURES ET DE RÉHABILITATION DES OISEAUX (CIBRO)



Parks Canada / L.Lévesque

9

100, rue du Cap-des-Roches
Saint-Fulgence

Tel.: 418 674-2425

Latitude : 48.446779
Longitude : -70.901009

Contact us for schedule and admission.

Discover our wild birds in rehabilitation on the aviaries' trail, observe several species of aquatic birds in the marshland and enjoy the exceptional scenery.



SAINTE-ROSE-DU-NORD



Parks Canada / L.Lévesque

10

Municipality of Sainte-Rose-du-Nord
126, rue de la Descente-des-Femmes
Sainte-Rose-du-Nord

Tel.: 418 675-2250
ste-rosedunord.qc.ca

Latitude : 48.388247
Longitude : -70.58699

Corporation nautique du quai

Schedule
May to October

Tourist Information

Schedule
June to September
Tel.: 418 675-2346

Visit the "Pearl of the Fjord", a town set in a valley between capes, which has kilometres of trails with the most beautiful panoramic viewpoints over the Fjord. Municipality of Sainte-Rose-du-Nord



PARC NATIONAL DU FJORD-DU-SAGUENAY BAIE-SAINTE-MARGUERITE SECTOR



Parc national du Fjord-du-Saguenay / M. Loisele

11

1121, route 172 Nord
Sacré-Cœur
Tel.: 1 800 665-6527 /
418 236-1162
parcsquebec.com

Latitude : 48.264924
Longitude : -69.945434

Schedule
May 20 to october 10

Admission
Admission fee charged

Watch the beluga whales from the shore and discover the fascinating universe of this protected species accompanied by our naturalist guides.



ANSE-DE-ROCHE DOCK



Parks Québec, Parc national du Fjord-du-Saguenay

12

346, ch. de l'Anse-de-Roche
(via route 172)
Sacré-Cœur

Latitude : 48.218251
Longitude : -69.87456

Schedule
Early June to the end of September

Tarifs
Boat launch:
Boats: \$8.50
Kayaks: \$4.50

Information for the marina
418 236-4325

A seaport surrounded by majestic landscapes where the sunsets are unforgettable. Picnic area, kayak outings. 12 nautical miles from Tadoussac.



CENTRE D'INTERPRÉTATION DES MAMMIFÈRES MARINS (CIMM)



13

108, rue de la
Cale-Sèche
Tadoussac
Tel.: 418 235-4701
baleinesdirect.org
gremm.org

Latitude : 48.138325
Longitude : -69.719292

Schedule

Mid-May to mid-
October : Every day

Admission

Adults: \$12 (plus taxes)
Accompanied children:
(18 and under): Free

Where are the
whales? Where are
they? What are the
researchers doing?
A visit is a must!
Exhibition, film,
specialists. Take part
in the famous whale
song courses.



POSTE DE TRAITE CHAUVIN



14

157, rue du
Bord-de-l'Eau
Tadoussac

Tel.: 418 235-4657 /
418 235-4446
Ext: 229
tadoussac.com

Latitude : 48.140815
Longitude : -69.716425

Schedule

June to October:
Every day May: upon
reservation, with groups.

Admission

Adults: \$4
Seniors: \$3
Children and students:
\$2,50

One of the most beautiful
villages of Quebec,
Tadoussac lets you re-live
the early days of the
colony through an
interactive and
entertaining exhibit
on contacts between
Europeans and the Innu.



PARC NATIONAL DU FJORD- DU-SAGUENAY BAIE-DE- TADOUSSAC SECTOR



15

Sector of the Dunes,
Pointe-de-l'Islet and the
Fjord Trail
Tadoussac

Tel.: 1 800 665-6527
parcsquebec.com

Latitude : 48.141032
Longitude : -69.725468

Schedule (trails)

June 3 to October 16

Admission:

Fee charged in the trails

Observe the meeting of
two giants at the
crossroads of Pointe-de-
l'Islet. For nature
adventurers, go to the
start of the Fjord trail!



CENTRE ARCHÉO TOPO



16

498, rue de la Mer
Les Bergeronnes

Tel.: 418 232-6286
archeotopo.com

Latitude : 48.228976
Longitude : -69.553217

Schedule

May to mid-October

Admission

Adults: \$6
Seniors: \$5
Families, Children
and group rates

Browse the exhibition
on the human
occupation of the
Côte-Nord (North
Shore) from the first
Amerindians to the
present day. Discover
the life of the former
Amerindian communities.
Pottery, pearl, dream
catcher and stone
cutting shops.



CAP DE BON-DÉSIR INTERPRETATION AND OBSERVATION CENTRE



17

13, ch. du
Cap-de-Bon-Désir
Les Bergeronnes

Tel.: 418 232-6751
418 235-4703
(low season)
parkscanada.gc.ca/saguenay

Latitude : 48.276413
Longitude : -69.476064

Schedule

June 18 to Sept. 11: Every day
Sept. 12 to Oct. 10 (incl.):
Wednesday to Sunday
and holiday

Admission

Family/Group of up to
seven people: \$19.60. Free
of charge for children of 5
years and under. Valid for
a same day visit at 3 Parks
Canada Centres.

Watch whales, seals and
seabirds in close to
shore. Our guides are
eager to answer your
questions and to offer
you activities. Be sure to
bring along warm clothing,
binoculars and a picnic.



parkscanada.gc.ca

MARINE ENVIRONMENT DISCOVERY CENTRE



18

41, rue des Pilotes
Les Escoumins

Tel.: 418 233-4414
418 235-4703
(low season)
parkscanada.gc.ca/saguenay

Latitude : 48.319463
Longitude : -69.413187

Schedule

June 18 to sept. 5 :
Every day
Sept. 6 to oct. 10 (incl.) :
Friday to Sunday, and
Holidays

Admission

Family/Group of up to
seven people: \$19.60. Free
of charge for children of 5
years and under. Valid for
a same day visit at 3 Parks
Canada Centres.

Explore one of North
America's most beautiful
underwater landscapes!
Activities for the whole
family. See whales and
visit the exhibit. Follow
divers live on widescreen
images (reservations
recommended).



parkscanada.gc.ca

ÎLE AUX BASQUES NATIONAL HISTORIC SITE OF CANADA



Île aux Basques / L. Lévesque

19

468, rue Vézina
Trois-Pistoles
Tel.: 418 851-1202
provancher.qc.ca

Latitude : 48.133079
Longitude : -69.184890

Schedule

June 9 to September 5
Every day, according to the tides and on demand

Admission

Adults: \$29
Youth (7-15): \$16.25
Children (6 and under): \$6.50
Taxes included



Île aux Basques is a gem of our natural and historic heritage. While on the island, watch birds and seals, hike the trails, and discover the centuries-old ovens once operated by Basque fishermen.

BAIE DE L'ISLE-VERTE NATIONAL WILDLIFE AREA



PARC Île-St-Laurent

20

Centre d'interprétation
La Maison Girard
371, route 132 Est
L'Île-Verte

Tel.: 418 898-2757 /
418 867-8882,
Ext: 201
(Low season)
parcbasstlaurent.com/
kiskotuk

Latitude : 48.023512
Longitude : -69.327132

Schedule

Mid-June to mid-September

Admission

Free

Follow the trails on the south shore of the estuary and observe the largest grassy salt marsh on the St. Lawrence



ÎLE-VERTE LIGHTHOUSE NATIONAL HISTORIC SITE OF CANADA



Parks Canada / V. Busque

21

Les Maisons du Phare
de l'Île Verte

2802, chemin du Phare
Notre-Dame-des-Sept-Douleurs

Tel.: 418 898-2730
phareileverte.com

Latitude : 48.051006
Longitude : -69.423616

Schedule

June 1 to October 31:
every day, in accordance with tide tables. Ferry crossing: 418 898-2843
traverseileverte.quebec/

Admission

\$88 / single occ. and
\$120 /double occ.
(plus taxes)

Discover the first lighthouse on the St. Lawrence and its museum. Fall asleep to the sound of the waves in the lightkeepers' houses.



ST. LAWRENCE EXPLORATION CENTRE



Studio du Ruisseau / SMQ

22

80, rue Mackay
Rivière-du-Loup
Tel.: 418 867-8796 /
418 867-8882,
Ext: 206
romm.ca

Latitude : 47.860305
Longitude : -69.552173

Schedule

June 5 to sept. 4

Admission

Adults: \$7.50
Children (6-17): \$4
Special family and group rates



Discover the St. Lawrence marine resources in their natural surroundings. Touch, observe and allow yourself to be guided to the heart of an amazing array of flora and fauna.

ÎLES DU POT À L'EAU-DE-VIE AND ÎLE AUX LIÈVRES



Jean Bédard / Sauvages

23

200 rue Hayward
Rivière-du-Loup
Tel.: 1 877 867-1660
ileauxlievres.com
pharedupot.com

Latitude : 47.84729
Longitude : -69.567567

Schedule

Mid-June to the end of September

Admission

According to the trip and the duration of the stay

Ecotourism experience, with a visit to bird sanctuaries, romantic nights on an island, guided cruises, hiking in a natural environment and exploration of historical sites.



Parks Canada / M. Loiseleur

FAMILY-BASED PLEASURE!

EMBARK UPON A MODERN-DAY TREASURE HUNT:

GEOCACHING!

Equipped with a GPS, set off in search of Parks Canada's geocaches. Do a search for "The White Whale," "La Fidèle," "Magtogoek" or "A Fragile Ecosystem" on geocaching.com.

EXPLOS-NATURE : ÉDUCATION-RECHERCHE

302, rue de la Rivière, Les Bergeronnes
Tel. : 418 232-6249
explosnature.ca

Children discover the natural sciences through the five senses! Nature classes for educational institutions, family camps and science day camps. This not-for-profit organization is dedicated to education and research about nature.

THE MARINE PARK IN YOUR SCHOOL

Parks Canada offers two online educational activities in relation to its outreach program:

- Elementary students in cycle 3 go on a virtual scientific expedition to explore the Marine Park.

Write us at: info.parcmarin@pc.gc.ca.

- Students in the secondary – cycle 1 geography program get to discover the protected territory. Visit marinepark.learnquebec.ca

FESTIVAL DES OISEAUX MIGRATEURS DE LA CÔTE-NORD

(MIGRATORY BIRD FESTIVAL OF THE NORTH SHORE)

During the 3rd weekend of September, experienced birdwatchers and nature lovers are invited to participate in the following activities: bird-watching excursions (pelagic birds and shorebirds), bird banding, and general public conferences.

festivalmigrateurs.com

Festival marin des Escoumins (Les Escoumins marine festival)

September 3 and 4 (Labour Day weekend)

Gaze in wonderment at the St. Lawrence's underwater landscapes. Attend some film screenings and follow divers as they perform a night dive. You'll be amazed by the marine life on view!

Photo contest and underwater treasure hunt. See all the details on the Facebook page!

Marine Environment Discovery Centre,
41, rue des Pilotes, Les Escoumins.

For information: 418-233-2766, ext. 26.



"SPECIES AT RISK" TRAIL IN THE SAGUENAY- ST. LAWRENCE MARINE PARK

This 8-kilometre-long trail links the Cap de Bon-Désir Road (Les Bergeronnes, GPS : 48.278083, -69.477585) to Des Pilotes street (Les Escoumins, GPS : 48.323491, -69.420014). Part of the trail runs along Highway 138 (see map on page 9).

LET YOURSELF BE CHARMED BY THE BOREAL OWLS

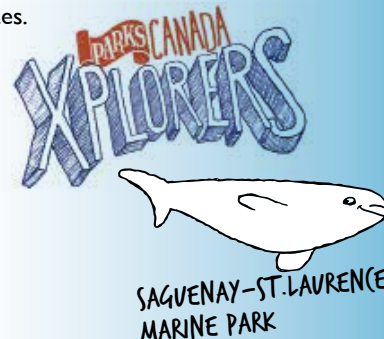


Learn about research carried out at the Observatoire d'oiseaux de Tadoussac (Tadoussac Bird Observatory) and see a master bander work with these small night owls. As an observer, you can even take part in making the rounds of the nets (activity offered in French). Parc national du Fjord-du-Saguenay sepaq.com/pq/sag

418 272-1556

DO YOUR CHILDREN LOVE TO EXPLORE?

Ask for the Xplorer program booklet when you enter one of the Parks Canada sites.



On three full moon evenings... We JAZZ it up under the moon!

On June 25, July 23 and August 20, 2016, around 8 p.m. (about one hour before moonrise).

Unique in Québec. Magical evenings outdoors on the shore of the river where the whales quietly give way to the moon and its silvery ribbon that decorates the scene for a jazz concert. An experience to be enjoyed!

Marine Environment Discovery Centre,
41, rue des Pilotes, Les Escoumins (inside in the event of inclement weather).

For reservations, call 418-232-6653.

August is archaeology month!

August 1 to 31

The Centre Archéo Topo proposes a tour through the Bergeronnes digs accompanied by a guide archaeologist. The archaeological dig simulation workshop is a unique experience for children; they will discover arrowheads, pipes, pottery shards, and other artefacts.

Centre Archéo Topo: 418-232-6286



Show you care, keep your distance

THE ST. LAWRENCE BELUGA IS ENDANGERED:

Parks Canada and Parcs Québec contribute to protection efforts

In earlier times, belugas were abundant in the waters of the St. Lawrence. There were between 7,800 and 10,000 at the end of the 19th century. Unfortunately, intensive commercial whaling in the early 20th century very nearly made them disappear. Despite the fact that whaling has been banned since 1979, the beluga population has not been restored. It is estimated that the population is actually in decline. Today, it would appear that only 889 belugas remain in the St. Lawrence.

The need to protect the beluga and a large part of its summer habitat prompted the creation of the Saguenay–St. Lawrence Marine Park in 1998. It also led to the implementation of a number of protection, research and awareness-increasing activities. Many organizations, institutions and governments contribute to the efforts in this regard.

Parks Canada and Parcs Québec are also doing their part to protect and increase knowledge of this magnificent animal. On your visit to the marine park area, you may be witnesses to some of their initiatives.

INCREASED AWARENESS:

- The captains of the observation boats and the sea kayak guides participate in an annual training session. If you take an excursion with them, you will benefit from their knowledge;
- By visiting the sites of the **Discovery Network**, you will discover various facets of the marine park while gaining access to information on the beluga;
- You may encounter one of the teams dedicated to research, awareness or monitoring who ply the marine park on a Parks Canada or a Parcs Québec boat;

THE PARTNERSHIP:

- We're working with Fisheries and Oceans Canada to educate recreational boaters and kayakers to take care of belugas by keeping their distance.
- The marine excursion companies, Parks Canada, Parcs Québec and the Group for Research and Education on Marine Mammals (GREMM), joined together to form the Eco-Whale Alliance in order to improve visitor experience and whale-watching practices in the marine park;
- We work in consultation with maritime transport specialists in order to reduce the risk of collision with whales and to limit disturbances;
- The recovery and examination of beluga carcasses program allows to learn about the state of health of the animals and to identify the causes of death;

THE MANAGEMENT OF ACTIVITIES:

- The *Marine Activities in the Saguenay–St. Lawrence Marine Park Regulations* were developed in collaboration with the marine excursion companies. Parks Canada park wardens oversee the application of this regulation;

RESEARCH:

- In addition to contributing to a number of studies, our teams study the distribution and abundance of beluga prey and the movement of vessels in its habitat.

Our efforts are in addition to those of a large number of stakeholders. Protecting the St. Lawrence beluga is everyone's business. Without your help, we will not be able to achieve this worthwhile goal.



19



20



17



18

Photos credits:

- | | |
|------------------------------------|--------------------------------------|
| 1 Parks Canada / C. Dubé | 13 Subh2o.net / Richard Larocque |
| 2 Sépaq / Mathieu Dupuis | 14 Parks Canada / Festival marin |
| 3 Parks Canada / J. Pleau | 15 Mathieu Tremblay / Nyctale |
| 4 Parks Canada / M. Loisel | 16 Jacques Gagné / Jazz sous la lune |
| 5 Parks Canada / J.-L. Provencher | 17 Parks Canada / C. Dubé |
| 6 Parks Canada / J.-L. Provencher | 18 Sépaq / Marc Loisel |
| 7 Parks Canada / L. Lévesque | 19 Parks Canada / J.-L. Provencher |
| 8 Parks Canada / J.-L. Provencher | 20 Parks Canada / M. Conversano |
| 9 Parks Canada / M. Loisel | |
| 10 Voile Mercator / Éric Chabot | |
| 11 Parks Canada / C. Dubé | |
| 12 Parks Canada / J.-L. Provencher | |



Printed on Enviro100 satin paper; post-consumption, certified Eco-Logo and chlorine-free process, manufactured from biogas energy.

(Print)
Cat. Number R61-50
ISSN 1910-5894

(Online)
Cat. Number R61-50
ISSN 1929-0950

NEED INFORMATION ABOUT THE MARINE PARK?

SAGUENAY–ST. LAWRENCE MARINE PARK

info.parcmarin@pc.gc.ca | marinepark.qc.ca |

 Follow us on facebook.com/SaguenayStLawrenceMP
Share your #marineparkmoment

PARKS CANADA

182, rue de l'Église
Tadoussac (Québec)
G0T 2A0
Tel.: 418 235-4703
Tel.: 1 888 773-8888
information@pc.gc.ca
marinepark.qc.ca

PARCS QUÉBEC

91, rue Notre-Dame
Rivière-Éternité (Québec)
G0V 1P0
Tel: 418 272-2767
Tel: 1 800 665-6527
parc.marin@sepaq.com
parcsquebec.com

TO HELP YOU PLAN YOUR STAY...

Tourisme Bas-Saint-Laurent

Tel.: 418 867-1272 • 1 800 563-5268
bassaintlaurent.ca

Association touristique de Charlevoix

Tel.: 418 665-4454 • 1 800 667-2276
tourisme-charlevoix.com

Association touristique du Saguenay–Lac-Saint-Jean

Tel.: 418 543-9778 • 1 877 BLEUETS (253-8387)
saguenaylacsaintjean.ca

Tourisme Côte-Nord

Tel.: 418 294-2876 • 1 888 463-5319
tourismecote-nord.com

VISIT ONE OF THESE INFORMATION OFFICES:

La Malbaie (Saint-Fidèle sector) VISITOR CENTRE

2820, boul. Malcom-Fraser
418-434-2299

Rivière-du-Loup TOURIST INFORMATION BUREAU

189, boulevard de
l'Hôtel-de-Ville
418 862-1981

Baie-Sainte-Catherine BAIE-SAINTÉ-CATHERINE WHARF

151, route 138

Les Escoumins TOURIST WELCOME BUREAU

154, route 138
418 233-2663

FERRYBOAT SCHEDULES AND INFORMATION

Escoumins / Trois-Pistoles

Tel.: 418 851-4676 • 1 877 851-4677
traversiercnb.ca

Rivière-du-Loup / Saint-Siméon

Rivière-du-Loup Tel.: 418 862-5094
Saint-Siméon Tel.: 418 638-2856
traverserdl.com

Baie-Sainte-Catherine / Tadoussac

Tel.: 418 235-4395 • 1 877 787-7483 *3
traversiersgouv.qc.ca

IN THE CASE OF AN EMERGENCY

CANADIAN COAST GUARD

Search and Rescue 1-800-463-4393
VHF Channel 16 (156.8 MHZ)
Available 24 hours a day, 7 days a week
Cellular Phone *16
Marine Pollution 1-800-363-4735

PARKS CANADA

Concerning collisions with or disturbances of marine mammals
1-866-508-9888
Available 24 hours a day, 7 days a week

RÉSEAU QUÉBÉCOIS D'URGENCES POUR LES MAMMIFÈRES MARINS

(Quebec marine mammal emergency network)
Concerning a marine mammal that is either
wounded or in trouble 1-877-722-5346

CETTE PUBLICATION EST AUSSI DISPONIBLE EN FRANÇAIS.