



Centre hospitalier affilié
universitaire

A University-Affiliated
Hospital Centre

ST. MARY'S HOSPITAL CENTER
ANNUAL REPORT ON RESEARCH

**For the period of
April 1, 2007 – March 31, 2008**

**Prepared by the
Department of Clinical Epidemiology and Community Studies**

December 12th, 2008



McGill

TABLE OF CONTENTS

A MESSAGE FROM THE HEAD, DCECS	2
1 RESEARCH ADMINISTRATION	3
1.1 Department of Clinical Epidemiology and Community Studies (DCECS)	3
1.1.2 Staff	4
1.1.3 Research Review Office	4
1.2 Scientific Research Committee	5
1.3 Research Ethics Committee	6
1.4 Financial report	6
2 RESEARCH ACTIVITIES	7
3 ACTIVITIES TO SUPPORT RESEARCH	8
3.1 DCECS website	8
3.2 Research consultation and collaboration	8
3.3 Coordination with quality management	8
3.4 Annual Research and Quality of Care Symposium	8
3.5 DCECS Seminar Series	8
3.6 Research trainees	9
4 RESEARCH DEVELOPMENT AT ST. MARY'S HOSPITAL CENTER	10
4.1 Strategic Plan for Research update	10
4.2 Affiliation with the Research Institute of the McGill University Health Center	10

APPENDICES

A ASSOCIATE MEMBERSHIP DCECS	12
B ACTIVE PROJECTS AT SMHC	13
C RESEARCH PERSONNEL	19
D SCIENTIFIC RESEARCH COMMITTEE MEMBERSHIP	20
E RESEARCH ETHICS COMMITTEE MEMBERSHIP	21
F RESEARCH EXPENDITURES – PAST 6 YEARS	22
G SMHC PUBLICATIONS AND PRESENTATIONS	23
H SNAPSHOT OF DCECS WEBSITE HOMEPAGE	30
I RESEARCH CONSULTATION AND COLLABORATION REPORT	31
J 8 TH ANNUAL RESEARCH AND QUALITY OF CARE SYMPOSIUM (PROGRAM OF EVENTS)	35
K DCECS RESEARCH SEMINARS	37

**A MESSAGE FROM THE HEAD,
DEPARTMENT OF CLINICAL EPIDEMIOLOGY AND COMMUNITY STUDIES**



This report provides a summary of the main research activities and accomplishments of St. Mary's Hospital Center, from April 1, 2007 to March 31, 2008. This report is significantly different from previous ones in that it now attempts to represent research activities at St. Mary's Hospital Center as a whole, while previous reports described those that occurred primarily in the Department of Clinical Epidemiology and Community Studies (DCECS). This change was made in an effort to promote a greater awareness of research activities at the Hospital in view of our transition to a *Centre hospitalier universitaire affilié (CHAU)*. The report is organized into 4 sections: 1) administration and funding of research; 2) current research activities (themes, grants, publications); 3) activities to support research (consultation and education); and 4) research development.

I would like to briefly note St. Mary's Hospital's recent conditional designation as *CHAU*. With this prestigious title come challenges and expectations from the *Ministère de la santé et des services sociaux* in order to meet the criteria for a full CHAU. The main criterion, an increase in the research capacity of the Hospital, will be met by recruiting more investigators to the Hospital, and obtaining a substantially increased amount of external funding. As our *CHAU* status was approved after April 1, 2008, we will provide more details on our status in next year's annual report.

Finally, I would like to acknowledge the substantial, continued financial support of the SMHC Foundation for research at St. Mary's. Clearly, without this support we would not have been able to achieve our CHAU status, or to contemplate the expansion of research required to meet the criteria for full CHAU designation. I would also like to acknowledge the assistance of Zahoor Chughtai, DCECS Administrative Coordinator, and Christine Gagné, Department Secretary, in preparing this report. We would welcome comments and suggestions on this new reporting format.

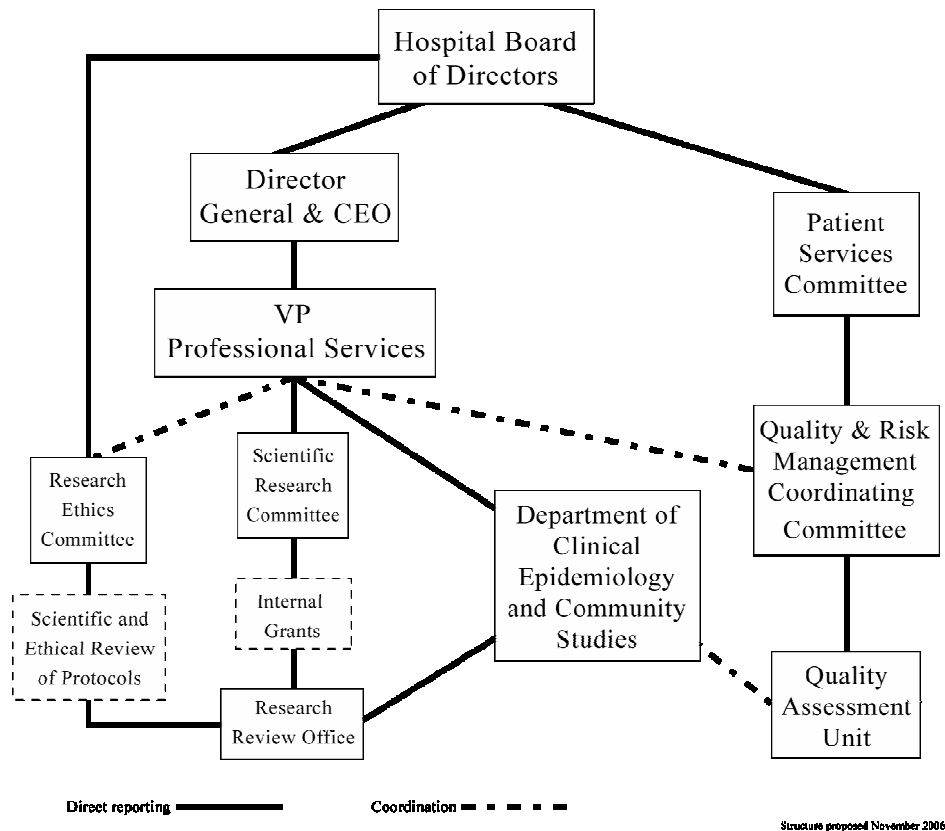
Jane McCusker, MD, DrPH,
Head, Department of Clinical Epidemiology and Community Studies, St. Mary's Hospital Center,
Professor, Department of Epidemiology, Biostatistics, and Occupational Health, McGill University.

1. RESEARCH ADMINISTRATION

This section describes the activities during 2007/08 of the main bodies that are responsible for research administration at St. Mary's (including the coordination, review, approval, and monitoring). These bodies include: the Department of Clinical Epidemiology and Community Studies (section 1.1), the Scientific Research Committee (section 1.2), and the Research Ethics Committee (section 1.3). The section ends with a summary financial report for research (section 1.4).

The figure below shows the organigram for research at St. Mary's.

Organigram showing research-related structures at St. Mary's Hospital



——— Direct reporting
- - - - - Coordination

1.1. Department of Clinical Epidemiology and Community Studies (DCECS)

Research at St. Mary's Hospital continued to be coordinated and supported through the DCECS, principally through its Research Review Office, and through the provision of administrative support to the Hospital's two research committees: the Scientific Research Committee, and the Research Ethics Committee. The DCECS also plays a major role in conducting and supporting research at the hospital (see sections 2 and 3). The DCECS is one of several hospital-based clinical epidemiology units linked to the Department of Epidemiology and Biostatistics at McGill University.

1.1.2. Staff

The DCECS comprises the Department Head, a core group of scientific and administrative staff, and a set of Associate members. Scientific staff include a consultant PhD biostatistician (0.2 FTE), a consultant PhD epidemiologist (0.2 FTE), an MSc biostatistician (0.5 FTE devoted to Hospital consultation and the remainder to funded grant research). An MSc-level Research Coordinator position is currently unfilled. Administrative staff include a full-time Administrative Coordinator, Department Secretary, and Research Administrative Secretary, and a half-time Research Secretary. Additional scientific and administrative support is provided, as needed, by temporary staff and students.

Associate members of the DCECS are individuals from within or outside the SMHC community who make significant contributions to the research mandate of the Hospital, either by leading or collaborating on Hospital research activities, or by helping to develop research at the Hospital (see Appendix B for list of members). Associate members also contribute to research educational activities at the Hospital, for example, by attending and giving DCECS research seminars, helping with the planning or organization of the Annual Symposium, giving research workshops, or organizing journal clubs. The Associate members met for the first time in May of 2007. The main areas of discussion were related to practical needs for support for research (e.g., qualified research assistants, assistance with financial accounting, need for a faster Internet connection). The latter issue is being pursued with Information Systems.

1.1.3. Research Review Office

Research protocol review and monitoring at the Hospital continued to be coordinated through the Research Review Office of the DCECS. A total of 24 new projects were reviewed (either full or expedited review), of which 19 were approved in 2007-08. There were a total of 67 active projects at St. Mary's Hospital Center during 2007-08 (see Appendix B). (Please note that this list of protocols does not include the McGill Oncology protocols that are reviewed and monitored by the McGill Institutional Review Board (IRB) under an IRB authorization agreement. Steps are being taken in collaboration with the McGill Department of Oncology to register these protocols so that they may be included in our next annual report).

Aspects of protocol review included: scientific, ethical, financial, and human resources, as described below.

- **Scientific and ethical review and monitoring** were conducted by the Research Ethics Committee (see 1.3 below).
- **Financial review and monitoring** were conducted by Zahoor Chughtai, DCECS Administrative Coordinator, in collaboration with the Hospital's Finance Department for projects for which funding was administered at St. Mary's or McGill University. Financial approval requires approval of protocol budget. Approved protocols are assigned a cost center. Financial monitoring is accomplished through periodic statements that are distributed to Principal Investigators for their approval.
- **Human resources review and monitoring** were conducted by Zahoor Chughtai, DCECS Administrative Coordinator, in collaboration with the Hospital's Department of Human Resources. Please refer to Appendix C for a complete list of St. Mary's research personnel who held active appointments in 2007-08. 19 research personnel occupied office space in the DCECS alone, while the remainder worked on research studies in other areas of the Hospital, or at various external research sites.

1.2. Scientific Research Committee

The Scientific Research Committee (SRC) continued to provide guidance and oversight for all research activities, policies and procedures, and development plans for St. Mary's Hospital Center. The SRC, chaired by Dr. Jane McCusker, met 10 times during 2007-08. SRC membership for 2007-08 is listed in Appendix D. Some notable activities of the SRC during 2007-08 are described below.

- **Review and approval of a new program of research in Telehomecare** This innovative research program was submitted by Dr. Antonia Arnaert, McGill University, School of Nursing. After internal and external review, and appropriate revisions, the proposal for a 3-year program was submitted to Senior Management and the Foundation with a recommendation for funding, and was awarded \$250,000 on January 22, 2008. The telehomecare research program began on April 1, 2008.
- **Administration of the SMHC Internal Research Grants program** This program aims to encourage high quality research at the Hospital, especially research pertaining to the quality and effectiveness of health services. In keeping with this purpose, priority was given to new or inexperienced investigators. 3 Internal research grants were approved:
 - “Women’s experience of skin-to-skin contact with their infant following a caesarean section”, submitted by Jennifer Somera, Maternal Child Care Program, awarded \$5,000
 - “Patient Empowerment: Development of an assessment scale at St. Mary’s Hospital”, submitted by Rosanna Faria, Department of Psychiatry, awarded \$5,000
 - “Effects of Snoezelen-based sensory stimulation intervention on the mood and behaviour of SMH patients in LTC & psychiatry”, submitted by Flora Masella, Department of Recreational Therapy, awarded \$5,000
- **Development of a new research competition** As the development of high quality research is one of the Hospital's top priorities, guidelines were created for an annual Hospital-wide research competition, with the aim of supporting pilot projects that contribute towards the development of research at SMHC, and that result in an increased amount of external research funding received by the Hospital, and in peer-reviewed publications. This competition replaces the Internal Research Grants program, and will be discussed in further detail in next year’s annual report.
- **Update on the Strategic Plan for Research** Please refer to section 4.1 for more details.
- **Revision of SMHC Regulatory Framework** Work continued on revising the St. Mary’s Hospital Center Regulatory Framework (formerly known as the Manual of Research Policies and Procedures), with the aim of obtaining formal designation of the SMHC Research Ethics Committee under Article 21 of the Civil Code of Québec, allowing the Committee to review and approve projects involving minors and incompetent adults. A revised version was presented to the SMHC Board of Directors in May of 2007. It was subsequently revised to incorporate additional Ministry requirements regarding the research ethics review of protocols. After changes were made, the Regulatory Framework was sent to the Hospital lawyer as well as the Ministry in December of 2007. It is currently undergoing another review, with the aim of presenting it to the SMHC Board of Directors in December of 2008. Details regarding the outcome of the Board presentation will be included in next year’s annual report.

1.3. Research Ethics Committee

The Research Ethics Committee (REC) met 9 times from April 1, 2007, to March 31, 2008. The REC was chaired by Dr. Martin Cole, who ended his term as chair on September 30, 2007. Dr. Michael Bonnycastle has since taken over as REC Chair. REC membership for 2007-08 is listed in Appendix E.

Protocol review: The REC reviewed 23 new protocols, 41 project amendments, 40 renewal requests, and 21 termination reports. 4 protocols submitted serious adverse events, and 2 protocols submitted safety updates.

Protocol monitoring: Mr. David Parry was hired in September of 2007 as the research ethics monitor for St. Mary's Hospital. His role was to conduct the monitoring of research protocols for the REC. Responsibilities included: ensuring adherence to REC study guidelines, recruitment procedures and proper consent form use, as well as producing written reports on a monthly basis for the REC.

There were no reported cases of research misconduct in 2007-08, as reported in the 2007-08 annual report of the Research Ethics Committee (copy available in the DCECS).

1.4 Financial report

Research expenditures for 2007-08 amounted to a total of \$853,636 (see Appendix F). Please note that while this table shows the total amount of expenditures broken down by category of funding, it does not show the total amount of funds received as revenue for 2007-08.

Approximately half (\$445,367 - 52%) of research expenditures during 2007/08 were for infrastructure (primarily to support salaries of DCECS staff to conduct the activities described in sections 1, 3, and 4 of this report). The remaining half (\$408,269 - 48%) was spent to support specific research projects described in section 2. A very high proportion of these latter expenditures (93%) were derived from external grants, with the balance made up by internal grants supported from a pool of funds derived from the indirect costs of privately-funded research (1%), and by specific targeted research projects funded by the SMHC Foundation (6%).

Overall, research expenditures by source of funding were similar to those in the 2006/07 fiscal year.

2. RESEARCH ACTIVITIES

This section describes the main research activities (including grants and publications) during the 2007-08 year. Please refer to Appendix B for a report on research projects active at St. Mary's Hospital Center.

During the calendar year of 2007, St. Mary's Hospital investigators published 34 articles in peer-reviewed journals, and 4 other journal articles. There were also 50 presentations at scientific meetings (please refer to Appendix G for a report of Hospital publications and presentations. It should be noted that this report is based on responses received from an annual request to submit details of publications and presentations, and may not be complete).

Research at St. Mary's continued to focus on clinical epidemiology and health services research. Established areas of research are in the mental health of seniors and emergency department services. Hospital staff also continued to conduct clinical research (including clinical trials), quality improvement research, and family medicine research. Areas that have been targeted for development include: family medicine, nursing, and integrative medicine. Selected research activities and publications under these broad themes are described briefly below.

Mental health of seniors A new internal grant was awarded to Flora Masella on Snoezelen-based sensory stimulation intervention (project 07-01 - Appendix B). Several publications appeared by Drs. Cole, McCusker, and a former trainee (Monica Cepoiu) emanating from studies conducted at SMHC of the outcomes of depression and delirium in older medical inpatients. This research documents the negative effects of depression that persist for up to 12 months upon the mental and physical health of patients and their family caregivers. Drs. Cole and McCusker continued work on a study of delirium in nursing homes funded by the Canadian Institutes for Health Research and the Alzheimer Society of Canada (projects 05-09 and 06-08 - Appendix B).

Emergency department research A 3-year grant to conduct a population-based study on emergency department utilization in Québec, led by Dr. Jane McCusker, was funded by the Fonds de la recherche en santé du Québec for an amount of \$270,000 (project 07-14 - Appendix B). Work continued in collaboration with researchers at the Universities of Montreal and Sherbrooke on the safety of discharge of seniors from emergency departments. A paper by a former trainee (Raluca Ionescu-Iltu) in the Canadian Medical Association Journal showed that better continuity of primary care is associated with lower use of emergency departments among seniors. There were several other publications and conference presentations on related subjects.

Family medicine research Dr. Mark Yaffe continued to publish on the results of his CIHR-funded study on elder abuse. Dr. Ellen Rosenberg published several articles on her research on doctor-patient communication. Dr. Maida Sewitch published research conducted in the SMHC Family Medicine clinic on physician recommendations for colorectal cancer screening. Dr. Laura Haiek continued her research on baby-friendly hospitals, and published a journal article.

Clinical research St. Mary's Hospital Center investigators were active in multi-center clinical trials. Two new grants were awarded to Drs. Ahlgren and Solymoss for clinical trials in oncology and hematology, respectively. Clinical research publications during 2007 included journal articles by Drs. Dylewski, Papageorgiou, and Roy.

Nursing research Two new grants were awarded to Dr. Antonia Arnaert on tele-homecare for palliative care patients, and to Jennifer Somera on skin-to-skin contact with infants following a cesarean section. Dr. Arnaert published two articles on research conducted at St. Mary's, on videotelephone nursing care in the elderly.

Integrative medicine research Dr. Maida Sewitch was awarded funds from the SMHC Foundation to continue to develop research in complementary and alternative medicine (CAM), focusing on attitudes of health professionals to CAM. DCECS staff also consulted with Dr. Robert Hemmings on a meta-analysis of the efficacy of black cohosh for the treatment of menopausal symptoms.

Quality improvement research An internal grant was received by Dr. Rosanna Faria to develop a measure of empowerment to be used in improving the quality of patient care at St. Mary's (project 07-03 - Appendix B). DCECS staff helped Hospital staff to write up some of their quality studies for publication. Several manuscripts were submitted and accepted for publication; these will appear in the 2008-09 research report.

3. ACTIVITIES TO SUPPORT RESEARCH

Support for research at SMHC is provided by the Department of Clinical Epidemiology and Community Studies (DCECS) and includes: epidemiological and biostatistical consultation on research to Hospital staff, support of quality assessment studies, the annual Research and Quality of Care Symposium, an educational program of seminars and workshops, and supervision of research trainees.

3.1. DCECS website

The DCECS website continued to be improved in an effort to showcase various research aspects at St. Mary's Hospital. Although the website is currently undergoing extensive development, you can visit the website: <http://www.smhc.qc.ca/Epidemiology/index.html>. The DCECS website can also be accessed via the St. Mary's Hospital website's homepage by clicking on the icon labelled "Research @ St. Mary's Hospital", located at the bottom of the homepage. Appendix H shows a portion of the web-site.

3.2. Research consultation and collaboration

Between April 1, 2007 and March 31, 2008, Department staff and Quality Assessment analysts consulted or collaborated on 40 different projects in 12 Hospital departments. (Please refer to Appendix I for a detailed list of consultations for 2007-08). 4 of these consultations subsequently led to publications. At the request of the Scientific Research Committee, a more detailed report on consultation/collaboration is being prepared to increase the accountability and transparency of the allocation of the DCECS budget towards these activities.

3.3. Coordination with quality management

Dr. McCusker continued to direct the Quality Assessment unit this year, and to coordinate the activities of the Quality Assessment Unit with other research at St. Mary's Hospital. The activities of the Quality Assessment unit during the 2007-2008 fiscal year are described in a separate report.

3.4. Annual Research and Quality of Care Symposium

In an effort to highlight research at the Hospital, including both scientific research and quality assessment studies, the DCECS co-sponsored, with the Quality Management Unit, the Hospital's 8th Annual Research and Quality of Care Symposium, held on November 21st, 2007. The theme of the Symposium was "Patient empowerment throughout the continuum of care". The first guest speaker, Moira Stewart, PhD, Professor, Department of Family Medicine – University of Western Ontario, Director, Centre for Studies in Family Medicine, gave the keynote talk on "The Role of Empowerment in Patient Centered Care". The second set of guest speakers Marie-Josée Caron, MD, Palliative Care Unit, and Isabelle Leblanc, MD, Department of Family Medicine, St. Mary's Hospital, gave a talk on "Life & Death Choices".

A total of 159 people attended the Symposium, of whom 27 were from outside of St. Mary's Hospital. 12 abstracts were submitted for awards. 25 poster presentations were made, including 16 Quality Assessment posters, and 9 posters in research. For a complete program of the symposium, please refer to Appendix J.

3.5. DCECS Seminar Series

The Department continued to offer research seminars and workshops to Hospital staff approximately twice a month. The topics addressed during the 15 seminars, presented between April 1, 2007 and March 31, 2008, are listed in Appendix K.

3.6. Research trainees

The following list includes university trainees who were affiliated with the DCECS between April 1, 2007 and March 31, 2008:

Students	Type	University	Supervisor	Term
Matthieu Storme	Medical student	McGill University	Maida Sewitch, PhD	Summer 2007
Stephanie Susser	Medical student	McGill University	Jane McCusker, MD, DrPH	April 2005 –
Ming Vu	MD fellow	Université de Montréal	Jane McCusker, MD, DrPH	April 2005 –
Yanling Guo	PhD student	McGill University	Jane McCusker, MD, DrPH	May 2007 – March 31, 2008
Taitu Hailu	PhD student	McGill University	Jane McCusker, MD, DrPH	April 2007 – September 2007
Maninder Setia	PhD student	McGill University	N/A*	April 2007 –
Jennifer Yang	MSc student	Université de Montréal	Bruce Brown, MD	April 2006 –
Nicole Rigillo	MA student	Concordia University	N/A*	April 2007 –

* N/A denotes a student hired on contract as a Research Assistant in the DCECS, and whose work was not related to her/his thesis or other academic curriculum

4. RESEARCH DEVELOPMENT AT ST. MARY'S HOSPITAL CENTER

Research development initiatives continued for the 2007-08 year, with ongoing administrative oversight by the Scientific Research Committee (SRC). Some notable research development activities were:

4.1. Strategic Plan for Research update

In May of 2007, an update of the Strategic Plan for Research was presented to the SMHC Foundation. While pre-existing research programs described in the original strategic plan of May 2005 would continue to be developed (e.g. geriatric psychiatry and emergency services research), new targeted areas of research would be developed through specific initiatives, including research in family medicine, nursing, complementary and alternative medicine, and women's health. A key component in attaining these objectives is the recruitment of additional researchers to SMHC. This would be accomplished with the assistance from McGill, including: the Dean, Faculty of Medicine; the Director of the School of Nursing; and Chair of the Department of Family Medicine. Issues regarding the development of scientific and administrative infrastructure were also presented, including efforts to increase awareness of the DCECS and overall Hospital research.

4.2. Affiliation with the Research Institute of the McGill University Health Center

There was continued progress in exploring a possible affiliation with the Research Institute of the McGill University Health Centre (RI MUHC). A meeting was held to discuss the possible affiliation on February 25th, 2008 with the Director of the RI MUHC, the General Manager of the RI MUHC, the Director of Professional Services of St. Mary's Hospital, the Head of the DCECS, and with the DCECS Department Administrative Coordinator. This affiliation may result in mutual coordination of research administration, as well as the development of scientific links. Administrative components may include: common policies and procedures, human resources, financial management of grants, and review of research contracts. Scientific components may include the establishment of research links that are consistent with the research mission of St. Mary's, and consistent with the scientific research axes of the RI MUHC. This affiliation will take into account the Hospital's status as *Centre hospitalier affilié universitaire (CHAU)*, for which St. Mary's would like the active support of the RI MUHC. Currently, a memorandum of understanding is being developed by both parties. Further details regarding the memorandum will be discussed in next year's annual report.

APPENDICES

APPENDIX A**ASSOCIATE MEMBERSHIP
DEPARTMENT OF CLINICAL EPIDEMIOLOGY AND COMMUNITY STUDIES
2007-2008**

Member	Title / Department	Start term	End term
Antonia Arnaert, RN, MPA, PhD	Assistant Professor, McGill School of Nursing	April 1, 2007	March 31, 2010
Bruce Brown, MD, CM, MPH	Director of Professional Services	January 1, 2007	December 31, 2009
Antonio Ciampi, PhD	Consultant Biostatistician, DCECS	January 1, 2007	March 31, 2008
Martin Cole, MD, FRCP(C)	Geriatric Psychiatrist, Mental Health	January 1, 2007	December 31, 2009
Laura Haiek, MD, MSc	Family Physician, Family Medicine	January 1, 2007	December 31, 2009
Michael Libman, MD, CM	Microbiologist, Infectious Diseases	April 1, 2007	March 31, 2010
Maida Sewitch, PhD	Consultant Epidemiologist, DCECS	January 1, 2007	January 23, 2008
Mark Yaffe, MD, CM, MCISc	Family Physician, Family Medicine	January 1, 2007	December 31, 2009

APPENDIX B

**ACTIVE PROJECTS AT SMHC
2007-2008**

Project ID	Principal Investigator	Site Investigator	Project/Title	Approval Date	Funding Source	Funding Amount	Funding Administrator
01-03	Yale	Eappen	Action to control cardio vascular risk in diabetes (ACCORD)	07-Mar-01	NIH	\$ 75,798	McGill
01-18	Siemiatyck	McCusker	Cell phone use and tumours : the Montreal component	25-Jan-02	CIHR	\$ 50,4891	INRS
01-20	Solymoss	N/Appl - SMHC	Thrombophilia in pregnancy prophylaxis study (TIPPS)	07-Oct-02	HSF	\$1,100/pt	SMHC
02-06	Franco	Pavilanis	Efficacy trial of HPV vs pap testing for screening for cervical cancer	30-Jul-02	CIHR	\$1,100,000	McGill
03-08	Franco	Brassard	Pap cytology screening failure: Influences of the patients, physician and laboratory	14-May-03	CIHR	\$77,236	McGill
03-22	Solymoss	N/Appl - SMHC	Stocking and COX-II inhibitors to prevent post-thrombotic syndrome: the SOX trial	19-Aug-04	CIHR	\$8,52.50/pt	SMHC
04-17	Sewitch	N/Appl - SMHC	Adhering to colorectal cancer screening guidelines	25-Oct-04	FRSQ	\$257,907	MUHC
04-23	Sewitch	N/Appl - SMHC	A pilot study of burdens, activities, and services use of persons providing assistance to chronically depressed seniors	01-Dec-04	FRSQ	\$10,000	MUHC
04-24	Foulkes	Anderson	Searching for prognostic signature in BRCA-1 related hereditary breast cancer: a pilot project using tissue array	06-Jun-05	SGK	\$177,202	LDI-JGH
04-25	Foulkes	Anderson	Somatic & mitochondrial mutations in hereditary & sporadic breast cancer	06-Jun-05	NCIC	\$44,000	LDI-JGH
04-26	Foulkes	Anderson	Creating cell lines from breast and ovarian tissue from women with established BRCA1, BRCA2, or PALB2 mutation status	06-Jun-05	FRSQ	\$60,000	LDI-JGH
04-32	Boss	Élie	Impact of antipsychotic medications on course and outcome of delirium	30-May-05	SMH	\$3,640	SMHC
04-34	Gagnon	N/Appl - CR	Patterns of care during the last six months of life of patients dying of cancer	17-Dec-04	N/Avail	N/Appl	N/Appl

APPENDIX B (CONT'D)

**ACTIVE PROJECTS AT SMHC (CONT'D)
2007-2008**

Project ID	Principal Investigator	Site Investigator	Project/Title	Approval Date	Funding Source	Funding Amount	Funding Administrator
05-09	McCusker	N/Appl - SMHC	Delirium in long term care settings: Occurrence, modifiable risk factors, and outcomes	15-Jul-05	CIHR	\$325,812	SMHC
05-18	Vanier	St. Pierre	Metric properties of a driving simulator for the assessment of safe driving for early stage Alzheimer's patients	15-May-06	CIHR	\$49,868	U de MTL
05-22	Gagnon	Rosenberg	The childbearing health and related service needs of newcomers (CHARSNN)	13-Feb-06	CIHR	\$2,079,618	McGill
05-23	Goldberg	Prchal	Gene-environment interactions in postmenopausal breast cancer: a case-control study	30-Mar-06	QBCF	\$150,0000	McGill
05-26	Henry	Brizard	Mood and cognitive functioning in late pregnancy and early postpartum: comparing breastfeeding and non breast-feeding women	27-Jan-06	CIHR	\$100,000	MUHC
06-02	Arnaert	N/Appl - SMHC	The meaning of a sense of wholeness to older adults with cancer	18-Aug-06	SMHC	\$5,000	SMHC
06-03	Sewitch	N/Appl - SMHC	Complementary and alternative medicine use at St. Mary's Hospital Centre - a five year plan	26-Apr-06	SMHC	\$330,000	SMHC
06-08	McCusker	N/Appl - SMHC	Delirium in nursing home patients with severe cognitive impairment (Alzheimer Society of Canada)	14-Aug-06	ASC	\$114,041	MUHC
06-09	Sewitch	N/Appl - SMHC	Development of a method to differentiate screening from surveillance, diagnostic and confirmatory colonoscopy	31-Jul-06	NCIC	\$144,000	McGill
06-11	Labreche	N/Appl - CR	Validation du processus diagnostique du mésothéliome de la plèvre	04-Dec-06	N/Appl	N/Appl	N/Appl
06-12	Yale	Eappen	Intensive glycemic control and skeletal health study (ACCORD-BONE) - Ancillary study to the ACCORD trial	08-Sep-06	NIH	\$7,049	McGill
06-13	Solymoss	N/Appl - SMHC	Study of dabigatran etexilate compared to Warfarin for 6 month treatment of acute symptomatic venous thromboembolism	19-Jul-06	Boehringer	\$5,000/pt	SMHC/MUHC
06-18	Sabourin	McConnell	Creutzfeldt-Jakob disease surveillance system in Canada (CJD-SS)	12-Apr-07	PHAC	N/A	PHAC
06-19	Pauly	Eid	Primary prevention of tunneled, cuffed venous hemodialysis catheter thrombosis using therapeutic dose warfarin	05-Mar-07	Quintilles	\$13,255	SMHC
06-20	Balicki	Keyserlingk	Preliminary study in breast stem cell characterization	11-Jan-07	CIHR	\$346,358	MUHC

APPENDIX B (CONT'D)

**ACTIVE PROJECTS AT SMHC (CONT'D)
2007-2008**

Project ID	Principal Investigator	Site Investigator	Project/Title	Approval Date	Funding Source	Funding Amount	Funding Administrator
06-22	Bakalian	Lindley	Intra-operative floppy iris syndrome in male cataract surgery patients	11-Jan-07	Sanofi-Aventis	\$50,000	Sanofi
06-24	Cohen	N/Appl - CR	Molecular signatures of lung cancer and clinical correlation	14-Dec-06	N/Appl	N/Appl	N/Appl
07-01	Masella	N/Appl - SMHC	Effects of Snozelen based sensory stimulation intervention on the mood and behaviour of SMH patients in LTC & psychiatry	13-Nov-07	SMHC Int. Grant	\$5,000	SMHC
07-02	Somera	N/Appl - SMHC	Women's experience of skin-to-skin contact with their infant following a cesarean section	04-Dec-07	SMHC Int. Grant	\$5,000	SMHC
07-03	Faria	N/Appl - SMHC	Patient Empowerment: Development of assessment scale at St. Mary's Hospital	24-Oct-07	SMHC Int. Grant	\$5,000	SMHC
07-05	Solymoss	N/Appl - SMHC	Efficacy and safety of oral dabigatran etexilate compared to Warfarin to prevent venous thromboembolism - REMEDY	11-Dec-07	Boehringer	\$7,800/pt	SMHC
07-06	Haiek	N/Appl - SMHC	L'Initiative des amis des bébés, Niveau d'implantation dans les établissements du Québec	04-Jun-07	MSSS	\$14,500	SMHC
07-07	Poissant	Kisilevsky	Development of integrated information tools for the optimization of health service delivery to the stroke population	18-Jun-07	CIHR	\$49,815	CRIR / IRM
07-08	Bogaty	N/Appl - CR	Évaluation sur le terrain du traitement de l'infarctus aigu du myocarde avec élévation du segment ST	19-Mar-07	N/Appl	N/Appl	N/Appl
07-09	McCusker	N/Appl - SMHC	GIRU - AXE Personnes Agées	17-May-07	GIRU	\$44,149	SMHC
07-10	Piat	Hidalgo	Housing and Recovery from Serious Mental Illness: Consumer and Service Provider Perspectives	26-Jun-07	CIHR	\$333,959	DHRC
07-12	Yale	Eappen	Ancillary eye study of ACCORD	29-Oct-07	NIH	\$63,000	McGill
07-13	Sewitch	N/Appl - SMHC	Attitudes of health care professionals towards complementary and alternative medicine	11-May-07	SMHC Foundation	\$330,000	SMHC
07-14	McCusker	N/Appl - SMHC	A population based study of emergency department utilization	18-Jun-07	FRSQ	\$270,000	McGill
07-15	Loyer	N/Appl - CR	Accès aux fichiers nominatifs de la clientèle d'Urgences-santé transporté en établissement	03-May-07	N/Appl	N/Appl	N/Appl

APPENDIX B (CONT'D)

**ACTIVE PROJECTS AT SMHC (CONT'D)
2007-2008**

Project ID	Principal Investigator	Site Investigator	Project/Title	Approval Date	Funding Source	Funding Amount	Funding Administrator
07-16	Laporte	Marcotte	A sibling study of women with borderline personality disorder	18-Jun-07	FRSQ	\$139,850	MUHC
07-17	Duarte-Franco	Farag	Prevalence of the HPV genotypes in archived specimens and risk factors of anal cancer reported in Quebec (1995-2005)	31-Jul-08	Merck Frosst	\$134,440	INSPQ
07-18	Dawes	Pavilanis	CAMBO trial: Conventional versus automated measurement of blood pressure in the office	10-Sep-07	OHSF	\$225,002	McGill
07-19	Eid	N/Appl - SMHC	Surveillance of access-related infections in urban, rural, and First Nations populations having home and outpt dialysis	25-Jul-07	N/Appl	N/Appl	N/Appl
07-20	Luo / Nuyt	Girard	Oxidative (pre-natal) stress, fetal growth and early indicators of programming of metabolic and cardiovascular disorders	31-Jul-08	CIHR	\$455,538	CHUSJ
07-21	Zappavigna	N/Appl - SMHC	Nursing student survey on clinical placements (Phase 1) - Quality assessment project	20-Sep-07	N/Appl	N/Appl	N/Appl
07-22	Arnaert	N/Appl - SMHC	The development and evaluation of a tele-homecare model for palliative patients and their families	22-Apr-08	SMHC Foundation	\$250,000	SMH
07-24	Corbeil	N/Appl - SMHC	A collaborative approach to adapting spaces in the inpatient psychiatric ward at SMH for pt/staff well being	22-Nov-07	SSHRC	N/Appl	N/Appl
07-25	Zappavigna	N/Appl - SMHC	An assessment of the performance appraisal process - Quality assessment project	13-Nov-07	N/Appl	N/Appl	N/Appl
07-26	Dampolias	N/Appl - SMHC	Sondage sur la qualité de vie des employés de l'hôpital - Quality assessment project	04-Dec-07	N/Appl	N/Appl	N/Appl
07-27	Chaillet	Hemmings	Qualité des soins, gestion du risqué obstétrical et du monde d'accouchement au Québec (QUARISMA)	25-Jun-08	CIHR	\$5,552,112	CHUSJ
08-01	Guarnieri	N/Appl - SMHC	Assessment of the 2007 FMC influenza campaign mega clinics and the patient influenza/pneumivax form - QA project	14-Jan-08	N/Appl	N/Appl	N/Appl
08-03	Poissant, Segal	Sorge	Wireless health care: Implementation and application, minimization of medication errors in a Quebec hospital ER	31-Mar-08	Prompt-Que., Concordia	\$420,000	McGill
08-05	Covell	Bambonye	Relationship of nursing intellectual capital to the quality of patient care and the recruitment and retention of nurses	28-Apr-08	NHSRU	\$3,596	U of T
98-13	Koski	Luskey	The role of amniotic fluid constituents in predicting human fetal growth	06-May-98	FCAR-FRSQ	N/Avail	McGill
B-27	Ahlgren	N/Appl - SMHC	Preop doxorubicin (adriamycin), (AC) vs preop AC & preop Docetaxel vs preop AC & postop Docetaxel in operable breast cancer	21-Oct-07	NCIC	\$2,500/pt	SMHC

APPENDIX B (CONT'D)

**ACTIVE PROJECTS AT SMHC (CONT'D)
2007-2008**

Project ID	Principal Investigator	Site Investigator	Project/Title	Approval Date	Funding Source	Funding Amount	Funding Administrator
B-30	Ahlgren	N/Appl - SMHC	Comparing Adriamycin (A) & Cyclophosphamide © followed by Taxotere (AC-T) vs (AT) vs (ATC) in breast cancer	28-Apr-99	Sanofi-Aventis	\$2,500/pt	SMHC
B-31	Ahlgren	N/Appl - SMHC	Comparing Adriamycin & Cyclophosphamide followed by Taxol (AC-T) vs (AC-T) & Herceptin in node-+ve breast cancer	13-Sep-00	Genentech	\$1,565/pt	SMHC
B-32	Ahlgren	N/Appl - SMHC	Comparing sentinel node resection to conventional axillary dissection in clinically node-negative breast cancer	15-Jul-99	NSABP	\$2,500/pt	SMHC
B-34	Ahlgren	N/Appl - SMHC	Comparing Clodronate therapy vs placebo in early breast cancer treated with chemo &/or tamoxifen or no therapy	13-Jun-01	Anthra	\$2,765/pt	SMHC
B-35	Ahlgren	N/Appl - SMHC	Comparing Anastrozole & Tamoxifen in postmenopausal ductal carcinoma with lumpectomy/radiation	09-Apr-03	NSABP	\$2,275/pt	SMHC
B-36	Ahlgren	N/Appl - SMHC	Comparing 3 cycles 5-FU, Epirubicin & cyclophosph. (FEC) to 4 cycles of adriamycin & cyclophosphamide for breast cancer	19-Jul-04	Pharmacia	\$550/pt	SMHC
B-38	Ahlgren	N/Appl - SMHC	A phase III adjuvant trial comparing three chemotherapy regimens in women with node positive breast cancer	08-Dec-04	Lilly, Amgen	\$2,500/pt	SMHC
B-42	Ahlgren	N/Appl - SMHC	Compare 5 yrs of Letrozole to placebo after 5 yrs of aromatase inhibit(AI) or 3 yrs Tamox. followed by AI in women w ca.	16-Jan-08	Novartis	\$2,500/pt	SMHC

**For all projects for which the Principal Investigator is outside of St. Mary's, a St. Mary's "Site Investigator" is appointed. Some projects listed in the following tables do not have a Site Investigator for one of two reasons: (1) the Principal Investigator is from St. Mary's (hence the code "N/Appl - SMHC"); (2) The project is only a chart review project, and therefore, does not require a Site Investigator (hence the code "N/Appl - CR").*

APPENDIX B (CONT'D)

Funding Source legend

ASC	Alzheimer Society of Canada
Boehringer	Boehringer Ingelheim Canada
CIHR	Canadian Institutes of Health Research
FCAR	Fonds pour la formation de chercheurs et l'aide à la recherche
FRSQ	Fonds de la recherche en santé du Québec
GIRU	Groupe interuniversitaire de recherche sur les urgences
HSF	Heart and Stroke Foundation
MSSS	Ministère de la santé et des services sociaux
NCIC	National Cancer Institute of Canada
NHSRU	Nursing Health Services Research Unit
NIH	National Institutes of Health Research
NSABP	National Surgical Adjuvant Breast and Bowel Project
OHSF	Not available
PHAC	Public Health Agency of Canada
QBCF	Quebec Breast Cancer Fund
SGK	Susan G. Koman for the Cure
SMHC Foundation	St. Mary's Hospital Center Foundation
SMHC Int. Grant	St. Mary's Hospital Center Internal Grants Program
SSHRC	Social Sciences and Humanities Research Council

Funding Administrator Legend

CHUSJ	Centre hospitalier universitaire Sainte-Justine
CRIR/IRM	Centre de Recherche Interdisciplinaire en Réadaptation
DHRC	Douglas Hospital Research Center
INRS	Institut national de la recherche scientifique
INSPQ	Institut national de santé publique du Québec (INSPQ)
IRM	Institut de réadaptation de Montréal
LDI-JGH	Lady Davis Institute-Jewish General Hospital
McGill	McGill University
MUHC	McGill University Health Center
NSABP	National Surgical Adjuvant Breast and Bowel Project
PHAC	Public Health Agency of Canada
SMHC	St. Mary's Hospital Center
U de MTL	Université de Montréal
U of T	University of Toronto

APPENDIX C

**RESEARCH PERSONNEL
2007-2008**

Name	Position	Term
Sophia Bachilova	Research Assistant	January 2008 –
Eric Belzile, M.Sc.	Statistician	March 1996 –
Fadi Berzghal	Research Interviewer	December 2007 –
Monica Cepoiu, M.Sc.	Study Coordinator	September 2003 – April 2007
Diane Chéné	Research Interviewer	September 2004 –
Zahoor Chughtai, M.Sc., M.B.A.	Department Administrative Coordinator	February 2006 –
Antonio Ciampi, Ph.D.	Consultant Biostatistician	April 2004 –
Kristine Cooper	Research Assistant	February 2008 –
Claire DesRosiers	Clinical Research Associate	January 2006 –
Melanie Dugas, B.A.	Research Secretary	September 2005 –
Alina Dyachenko, M.Sc.	Statistician	October 2004 –
Tina Emond, B.A.	Study Coordinator	July 2002 –
Christine Gagné	DCECS Department Secretary	November 2002 –
Cathy Galina	Principal Clinical Research Associate	January 2001 –
Maria Gordon, M.A.	Study Coordinator	November 2004 – June 2007
Christopher MacKinnon	Research Assistant	February 2007 –
Caroline Mailloux	DCECS Clerical Assistant	August 2005 –
Kathia Mendelew	Study Coordinator	November 2000 –
Pascal Nadeau	Research Interviewer	May 2007 –
David Parry, B.A.	Study Coordinator	June 2005 –
Silvia Petrella	Research Interviewer	October 2004 – June 2007
Alison Pletch, B.A.	Research Assistant	January 2007 – October 2007
Elizabeth Plomp, B.A.	Research Administrative Secretary	January 2005 –
Nicole Rigillo	Study Coordinator	March 2007 –
Dr. Deniz Sahin	Research Assistant	July 2007 –
Maninder Setia	Research Assistant	April 2007 –
Maida Sewitch, Ph.D.	Consultant Epidemiologist	October 2002 –
Yue You, M.Sc.	Statistician	July 2005 –
Lihong Zhong	Research Assistant	January 2008 –

APPENDIX D

**SCIENTIFIC RESEARCH COMMITTEE MEMBERSHIP
2007-2008**

Member	Title / Department	Start term	End term
Jane McCusker, MD, DrPH	Head DCECS, SRC Chair Non-Voting, Ex-Officio	Indefinite	
Martin Cole, MD	Geriatric Psychiatrist	Sept. 2007	Aug. 31, 2010
Laura Haiek, MD	Family Medicine	Sept. 2007	Aug. 31, 2010
Makeda Semret	Infectious Diseases and Medical Microbiology	Feb 1, 2008	Jan 31, 2011
Leonora Lalla	Family Medicine	Mar 12, 2008	Mar 11, 2011
Linda Bambonye	Vice President, Operations and Nursing	Sept. 2005	Aug. 31, 2008
Zahoor Chughtai	Department Administrative Coordinator	Mar. 2006	Aug. 31, 2008
Bruce Brown, MD	Vice-President, Professional Services Non-Voting, Ex-Officio	Indefinite	
Ian Pellat	Chief Accountant Non-Voting, Ex-Officio	Indefinite	

APPENDIX E

**RESEARCH ETHICS COMMITTEE MEMBERSHIP
2007-2008**

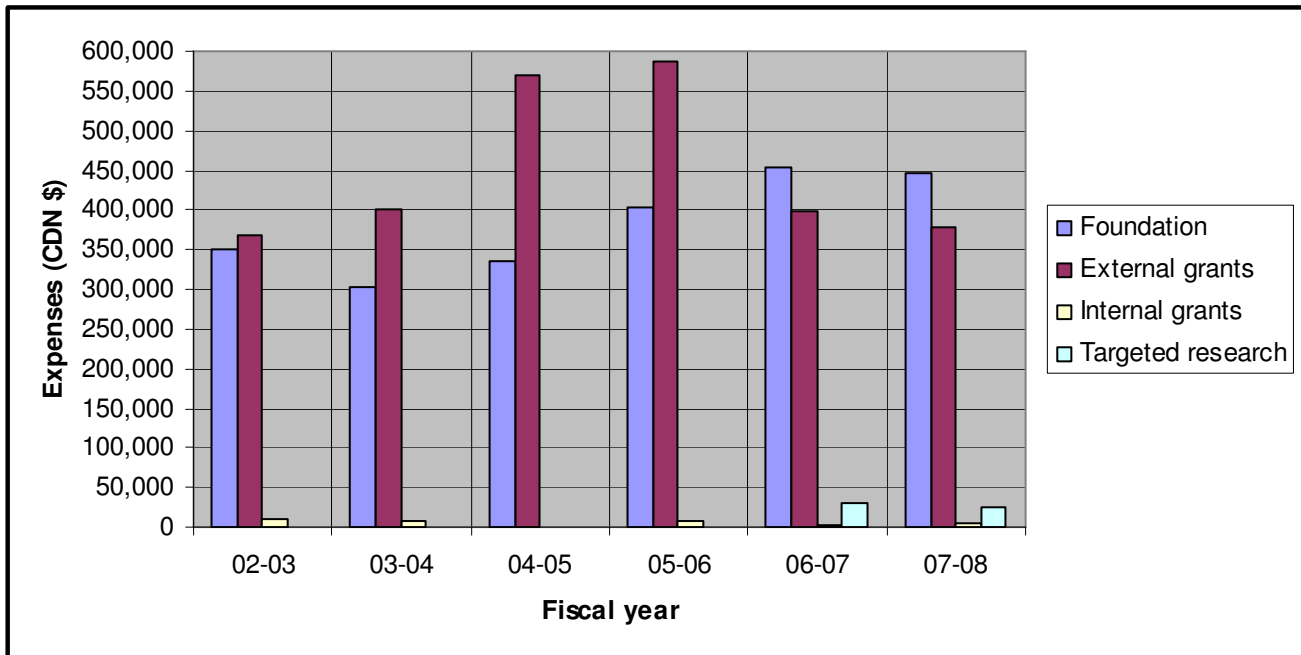
Member	Title (Depart.)	Start term	End term
Dr. Michael Bonnycastle	Chair (Geriatrics)	October 2007	September 2010
Dr. M. Cole	Member (Psychogeriatrics)	September 2007	September 2010
Anne Garland	Member (Layperson)	September 2005	September 2008
Dr. Zita Kruszewski	Member (Clinical Ethicist)	September 2005	September 2008
Father Roman Lahola	Member (Pastoral Services)	November 2005	September 2008
Dr. Susan Solymoss	Member (Hematology/Oncology)	September 2005	September 2008
Marcela Hidalgo	Member (Social Services)	March 2005	September 2008
Eva Haber	Member (Layperson)	May 2006	September 2009
Elaine Doucette	ICU nurse-educator	July 2006	September 2007
Marion Dana	Lawyer	June 2007	June 2008

Non-Voting, Ex-Officio Members	Title	Start term	End Term
Dr. Jane McCusker	Head, DCECS	Indefinite	
Ms. Marie Iskandar, Consultant	Chief Pharmacist	As Needed	

APPENDIX F

RESEARCH EXPENDITURES – PAST 6 YEARS
2007-2008

	2002-03	2003-04	2004-05	2005-06	2006-07	2007-08
Foundation-supported infrastructure	350,426	301,372	334,709	402,662	452,597	445,367
External grants	369,056	401,298	570,895	586,547	398,132	377,852
Internal grants	9,660	8,207	342	8,566	1,922	5,297
Foundation-supported targeted research	0	0	0	0	29,231	25,120
Total expenses	729,142	710,877	905,946	997,775	881,882	853,636



APPENDIX G

SMHC PUBLICATIONS AND PRESENTATIONS Calendar year 2007

Names in bold are persons currently affiliated, at the time the work was conducted, with St. Mary's Hospital Center

Journal articles with peer-review

1. Al-Qahtani M, Morris B, Dawood S, **Onerheim R**. Malignant mesothelioma of the tunica vaginalis. Canadian Journal of Urology, 14(2):3514-3517, 2007.
2. **Arnaert A**, Delesie L. Effectiveness of video-telephone nursing care for the homebound elderly. Canadian Journal of Nursing Research, 39(1): 20-36, 2007.
3. **Arnaert, A**. Commentary by Arnaert. Breast cancer survivors: information and support after treatment. Clinical Nursing Research, 16(4): 294-297, 2007.
4. Benediktsson H, Whitelaw J, **Roy I**. Pathology services in developing countries. Archives of Pathology and Laboratory Medicine, 131: 1636-1639, 2007.
5. **Brenner K**, Schmitz N, Pawliuk N, Fathalli F, Joober R, **Ciampi A**, King S. Validation of the CAPE with a Montreal community sample. Schizophrenia Research, 95 (1-3), 86-95, 2007.
6. Cappeliez P, Robitaille A, **McCusker J**, **Cole M**, **Yaffe M**, **Sewitch M**, **Cepoiu M**, **Ciampi A**, Dawes M, Latimer E. Recovery from depression in older depressed patients in primary care: relation with depression severity and social support. Clinical Gerontologist, 31(2):17-32, 2007.
7. **Cepoiu M**, **McCusker J**, **Cole M**, **Sewitch M**, **Belzile E**, **Ciampi A**. Recognition of depression by non-psychiatric physicians -A systematic literature review and meta-analysis. Journal of General Internal Medicine, 23(1): 25-36, 2007.
8. **Cepoiu M**, **McCusker J**, **Cole M**, **Sewitch M**, **Ciampi A**. Recognition of depression in older medical inpatients. Journal of General Internal Medicine, 22(5): 559-64, 2007.
9. **Cole, M**. Does depression in older medical inpatients predict mortality? A systematic review. General Hospital Psychiatry, 29: 425-30, 2007.
10. **Cole M**, **McCusker J**, **Ciampi A**, **Dyachenko A**. An exploratory study of diagnostic criteria for delirium in older medical inpatients. Journal of Neuropsychiatry and Clinical Neurosciences, 19(2):151-156, 2007.
11. **Cole M**, **McCusker J**, Dufouil C, **Ciampi A**, **Belzile E**. Short-term stability of diagnoses of major and minor depression in older medical inpatients. Psychosomatics, 48(1): 38-45, 2007.
12. **Dylewski J**. I see faces. Canadian Medical Association Journal, 176: 216-217, 2007.
13. **Dylewski J**. The road to Stockholm. Infectious Diseases in Clinical Practice, 15: 357-8, 2007.
14. **Dylewski J**, **Drummond R**, **Rowen J**. A case of Clostridium septicum spontaneous gas gangrene. Canadian Journal of Emergency Medicine, 9: 133-135, 2007.
15. **Dylewski J**, **Duong M**. The rash of secondary syphilis. Canadian Medical Association Journal, 176: 33-5, 2007.
16. **Haiek LN**, Gauthier D, Brosseau D, Rocheleau L. Understanding breastfeeding behavior: rates and shifts in patterns in Québec. Journal of Human Lactation, 23:24-31, 2007. Available at <http://jhl.sagepub.com/cgi/content/abstract/23/1/24>

APPENDIX G (CONT'D)

Journal articles with peer-review (cont.)

17. **Ionescu-Iltu R, McCusker J, Ciampi A**, Vadeboncoeur A, Roberge D, Larouche D, Verdon J, Pineault R. Continuity of primary care is associated with reduced emergency department utilization by seniors. Canadian Medical Association Journal, 177(11):1362-1368, 2007.
18. Jeyanathan M, Boutros-Tadros O, Radhi J, **Semret M**, Bitton A, Behr MA. Visualization of Mycobacterium avium in Crohn's tissue by oil-immersion microscopy. Microbes and Infection, 9(14-15):1567-73, 2007.
19. Kane SV, Brixner D, Rubin DT, **Sewitch MJ**. The complexity of compliance and persistence in ulcerative colitis (Based on the proceedings of a roundtable). Gastroenterology & Hepatology, 3(9) Suppl 28, 2007.
20. **McCusker J, Cole M, Ciampi A**, Latimer E, Windholz S, **Belzile E**. Major depression in older medical inpatients predicts poor physical and mental health status over 12 months. General Hospital Psychiatry, 29(4): 340-348, 2007.
21. **McCusker J, Cole M, Ciampi A**, Latimer E, Windholz S, **Elie M, Belzile E**. Twelve-month course of depressive symptoms in older medical inpatients. International Journal of Geriatric Psychiatry, 22(5): 411-17, 2007.
22. **McCusker J, Ionescu-Iltu R, Ciampi A**, Vadeboncoeur A, Roberge D, Larouche D, Verdon J, Pineault R. Hospital characteristics and emergency department care of older patients are associated with return visits. Academic Emergency Medicine, 14(5): 426-33, 2007.
23. **McCusker J**, Latimer E, **Cole M, Ciampi A, Sewitch M**. Major depression among medically ill elders contributes to sustained poor mental health in their informal caregivers. Age and Ageing, 36: 400-406, 2007.
24. **McCusker J**, Verdon J, Veillette N, Berg K, **Emond T, Belzile E**. Standardized screening and assessment of older emergency department patients: a survey of implementation in Quebec. Canadian Journal on Aging, 26(1): 49-57, 2007.
25. **Papageorgiou A**. Management of the preterm & VLBW infant: prevention of necrotizing enterocolitis. La Pediatria medica e chirurgica: Medical and surgical pediatrics 29:118-119, 2007.
26. **Rosenberg E**, Kirmayer LJ, Xenocostas S, Dominice Dao M, Loignon C. General practitioners' strategies in intercultural clinical encounters. Family Practice, 24:145-151, 2007.
27. **Rosenberg E**, Leanza Y, Seller R. Doctor-patient communication in primary care with an interpreter: physician perceptions of professional and family interpreters. Patient Education and Counseling, 67:286-292, 2007.
28. **Rosenberg E**, Leanza Y, Seller R. Travailler avec un interprète en soins de première ligne: pertes et renoncements. Association pour la recherche interculturelle, Bulletin No 45 /décembre 2007.
29. **Roy I**, Othieno E. A mobile fine needle aspiration cytology clinical in rural Uganda. Acta Cytologica, 51(supp 2):299, 2007.
30. **Sewitch MJ**, Blais R, Rahme E, Bexton B, Galarneau S. Receiving guideline concordant pharmacotherapy for major depression: impact on ambulatory and inpatient health services use. Canadian Journal of Psychiatry, 52(3):191-200, 2007.
31. **Sewitch MJ**, Fournier C, **Ciampi A, Dyachenko A**. Adherence to colorectal cancer screening guidelines in Canada. BMC Gastroenterology, 7(1):39, 2007.
32. **Sewitch M**, Fournier C, Dawes M, **Yaffe M**, Snell L, Roper M, Zanelli P, **Pavilanis A**. Do physician recommendations for colorectal cancer screening differ by patient age? Canadian Journal of Gastroenterology, 21: 435-438, 2007.

APPENDIX G (CONT'D)

Journal articles with peer-review (cont.)

33. Voyer P, **Cole M**, **McCusker J**, **Belzile E**. Factors associated with delirium severity among older patients. Journal of Clinical Nursing, 16(5): 819-31, 2007.
34. **Yaffe MJ**, Weiss D, Wolfson C, Lithwick M. Detection and prevalence of abuse of older males: perspectives from family practice. Journal of Elder Abuse and Neglect, 19 (1/2): 47-60, 2007.

Journal articles without peer review

1. **Arnaert A**, Klooster J, Chow V. Attitudes of four older persons with depression towards video-telephones: an exploratory study. Journal of Gerontological Nursing, 33(9): 5-13, 2007.
2. Knoll JHM, Lichter P, **Bakdounes K**, Eltoum IEA. In situ hybridization and detection using nonisotopic probes. Current Protocols in Molecular Biology, Supp 79, 14.7.1-14.7.17, 2007.
3. **McMahon E**, **Gagnon C**, Nahmias B. Relaxation par la massothérapie sur chaise. Osmose, 21(1):25-26, 2007.
4. **Surprenant L**. Le cancer et son traitement médicamenteux: un arsenal thérapeutique en évolution. Le Patient, 1(1): 27-29, 2007.

Presentations at scientific meetings and published abstracts

1. **Anderson D**, Prevost M. On-site cytotechnician screening improves efficient management of thyroid nodules. Poster Presentation at ECCO 14, the European Cancer Conference, Barcelona, Spain, September 2007.
2. **Bakdounes K**, Gallaspy Sc, Connolly M, Roberson J, Eltoum I, Chhieng DC. Discordance interpretations between cytotechnologists/pathologists and HPV testing. American Society of Cytopathology, 55th Annual Scientific Meeting, Houston, Texas, November 2-6, 2007.
3. **Boillat M**, Chalk C. A generalist in the specialist jungle: are first-year medical student perceptions of family medicine influenced by a brief exposure to a family physician lecturer in the pre-clinical years? (poster presentation) Association of Faculties of Medicine of Canada – Canadian Association for Medical Education (AFMC-CAME), Victoria, British Columbia, May 5-9, 2007.
4. **Boillat M**, Jimenez V, Bartlett G, Dawes M, Pluye P, Rodriguez C, Shea L. Promoting primary care research: the development of an MSc in Family Medicine at McGill University (poster presentation) Family Medicine Forum, Winnipeg, Manitoba, October 11-13, 2007.
5. **Brenner K**. Cortisol response to a psychosocial stressor in Schizophrenia: Blunted, delayed or normal? Clinical Research Division, Douglas Mental Health University Institute. Montreal, Quebec, 21 February 2007.
6. **Brenner K**. Schizophrenia patients exhibit reduced cortisol response to psychosocial stress compared to community controls. Annual Research Day, Douglas Mental Health University Institute, Montreal, Quebec, 20 April 2007.
7. **Cepoiu M**, **Sewitch MJ**. Complementary and alternative medicine use in North America – a literature review. Mini- Symposium IN-CAM. Montreal, Canada, February, 2007.
8. Chartier L, **Sewitch MJ**, Fournier C. Patient satisfaction with screening colonoscopy. The Tenth Annual Carl A. Goresky Research Day, McGill University, Montreal, June, 2007.
9. **Dinh NMH**. Indignation in a cross-cultural, clinical context. 6th Global Conference of Making Sense of: Health, Illness and Disease, Oxford, Great Britain, 8 -12 July, 2007.

APPENDIX G (CONT'D)

Presentations at scientific meetings and published abstracts (cont.)

10. **Dinh NMH, Marcotte, S.** Services d'urgences psychiatriques et de crise : Une approche multidisciplinaire intégrée. Conférence dans le cadre du Projet Dialogue : "Vers une première ligne forte en santé mentale". CSSS La Pommeraie – Brome Missisquoi, Quebec, 18 May 2007.
11. **Elie M, Boss K, McCusker J, Cole M, Belzile E.** Characteristics of elderly hospitalized patients with delirium who are prescribed an antipsychotic medication: a cross sectional study. 57th Annual Conference: Identity, Humanity, Generativity, Montréal, Québec, 15 - 18 November 2007.
12. Fournier C, **Sewitch MJ.** What predicts patient adherence to physician's referral for colorectal cancer screening? McGill University Health Centre Research Day, Montreal, May, 2007.
13. **Haiek LN, Rocheleau L.** Breastfeeding protection in health care facilities of Quebec. American Public Health Association annual meeting, Washington DC, November 5, 2007. Available at http://apha.confex.com/apha/135am/techprogram/paper_160721.htm
14. **Hailu T, McCusker J.** Development of a screening tool to identify older patients in emergency departments at risk of falls. Division of Geriatric Medicine, 12th Annual Research Day Conference, Montreal, Quebec, April 27, 2007.
15. **Han L, McCusker J, Cole M,** Abrahamowicz M, Capek R. 12-month cognitive outcomes of major and minor depression in older medical patients. The Gerontological Society of America, 60th Annual Scientific Meeting, San Francisco, CA, November 16-20, 2007.
16. Khoury I, **Ciampi A,** Toussaint G, Antoniano I, Murie C, Nadon R. Proximity-graphs-based clustering of micro-array probes, Poster, 35th Annual Meeting of the Statistical Society of Canada, St. John's Newfoundland, 2007.
17. **Kovacs L, Papageorgiou A.** Incidence, predisposing factors and outcome of NEC in infants <32 weeks gestation. Ped Res 58, electronic version 2007.
18. **McCusker J, Cole M,** Latimer E, **Sewitch M, Cepoiu M, Ciampi A.** Recognition and treatment of late life depression in ambulatory care settings: a longitudinal study. Canadian Association for Health Services and Policy Research (CAHSPR) Conference, Toronto, Ontario, June 12-14, 2007.
19. **McCusker J, Cole M,** Latimer E, **Sewitch M, Cepoiu M, Ciampi A.** Recognition and treatment of late life depression in ambulatory care settings. Canadian Association on Gerontology (CAG), 36th Annual Scientific and Educational Meeting, Calgary, AB, November 1-3, 2007.
20. **McCusker J,** Latimer E, **Cole M, Ciampi A, Sewitch M.** The nature of informal caregiving in older medical inpatients: does depression make a difference? Canadian Coalition for Seniors' Mental Health. Canadian Coalition for Seniors' Mental Health National Conference, Mississauga, Ontario, September 24-25, 2007.
21. **McCusker J,** Latimer E, **Cole M, Ciampi A, Sewitch M, Belzile E.** The nature of informal caregiving among older medical inpatients with and without depression. Canadian Association on Gerontology (CAG), 36th Annual Scientific and Educational Meeting, Calgary, AB, November 1-3, 2007.
22. **McCusker J,** Roberge D, Vadeboncoeur A, **Ciampi A, Cepoiu M, Belzile E.** Determinants of safe discharge of seniors from the emergency department. Canadian Association on Gerontology (CAG), 36th Annual Scientific and Educational Meeting, Calgary, AB, November 1-3, 2007.
23. **McCusker J,** Roberge D, Vadeboncoeur A, Poissant L, Mallet L, Larouche D, Verdon J, Pineault R, **Cepoiu M, Belzile E.** Safe discharge of seniors from the emergency department (ED): differences among Québec EDs. Canadian Association for Health Services and Policy Research (CAHSPR) Conference, Toronto, Ontario, June 12-14, 2007.

APPENDIX G (CONT'D)

Presentations at scientific meetings and published abstracts (cont.)

24. **Papageorgiou A.** Admission hypothermia in infants <1000 gms: causes and consequences. Neonatology: Fetal and Neonatal Research; Abstract 43:294, 2007.
25. **Papageorgiou A.** Ethical & medical aspects related to extreme prematurity. Annals of Pediatrics 67:A16, 2007
26. **Papageorgiou A.** Factors predisposing to early neonatal hypotension: impact on outcome in infants ≤1000 grams. Proceedings of the International Perinatal Collegium Abstract 13:35, 2007.
27. **Papageorgiou A.** Management of the preterm & VLBW infant: prevention of necrotizing enterocolitis. Medical and Surgical Pediatrics 29;119, 2007.
28. **Sewitch MJ.** Antidepressant use for major depression across the generations. 41st Congres de l'Association des médecins psychiatres du Québec. Mont Tremblant, Canada, June, 2007. Keynote speaker.
29. **Sewitch MJ, Cepoiu M.** Attitudes of health care professionals towards CAM in Canada and United States. Mini- Symposium IN-CAM. Montreal, Canada, February 2007.
30. **Sewitch MJ, Ciampi A.** Using research data to determine colorectal cancer screening policy in Canada. 2007 CDC Cancer Conference. Atlanta, USA, August, 2007.
31. **Sewitch M, Cole M, McCusker J, Ciampi A.** Psychoactive medication use and non-adherence for mental health problems in Canadian seniors. 65th Annual Meeting, American Psychosomatic Society, Budapest, Hungary, March 7-10, 2007.
32. **Sewitch MJ, Fournier C, Ciampi A, Dyachenko A.** Adherence to colorectal cancer screening guidelines in Canada. National Cancer Institute of Canada 60th Anniversary Cancer Research Conference. Toronto, Canada, November, 2007.
33. **Sewitch MJ, Fournier C, Ciampi A, Dyachenko A.** Correlates of adherence to colorectal cancer screening guidelines in four Canadian provinces. Canadian Digestive Diseases Week, Banff, Canada. February, 2007. Canadian Journal of Gastroenterology, 2007;21(Suppl A):129A
34. **Sewitch MJ, Fournier C, Ciampi A, Dyachenko A.** Disparities in colorectal cancer screening rates in Canada. National Cancer Institute of Canada 60th Anniversary Cancer Research Conference. Toronto, Canada, November, 2007.
35. **Sewitch MJ, Fournier C, Ciampi A, Dyachenko A.** Population-based estimates of colorectal cancer screening in four Canadian provinces. Canadian Digestive Diseases Week, Banff, Canada. February, 2007. Canadian Journal of Gastroenterology, 2007;21(Suppl A):129A.
36. **Sewitch MJ, Fournier C, Ciampi A, Dyachenko A.** Psychosocial correlates of adherence to colorectal cancer screening guidelines. 2007 American Psychosomatic Society 65th Annual Meeting. Budapest, Hungary, March, 2007. Citation Poster
37. **Sewitch MJ, Fournier C, Roper M, Panzini B.** Patient-physician discordance on the indication for colonoscopy. National Cancer Institute of Canada 60th Anniversary Cancer Research Conference. Toronto, Canada, November, 2007.
38. **Sewitch MJ, Rigillo N, Storme M.** Health care professionals' attitudes towards CAM: are there differences according to the evidence? 4th Annual IN-CAM Symposium. Vancouver, Canada, November, 2007.

APPENDIX G (CONT'D)

Presentations at scientific meetings and published abstracts (cont.)

39. Steinert Y, McLeod P, **Boillat M**, Meterissian S, Elizov M, Macdonald ME. Faculty development: a field of dreams? (poster presentation) Research in Medical Education Annual Meeting (RIME-AAMC), Washington, DC, November 2-7, 2007.
40. **Storme M, Sewitch MJ, Rigillo N**. Integrating complementary and alternative medicine into traditional medicine: a survey of health care professionals. Faculty of Medicine Student Research Day, McGill University, Montreal, November, 2007.
41. Veillette N, Demers L, Dutil E, **McCusker J**. Development of a tool for the assessment of the functional status of older adults visiting the emergency department. Canadian Geriatrics Society Annual Meeting, Banff, Alberta, April 19-21, 2007.
42. Veillette N, Demers L, Dutil E, **McCusker J**. Functional status for older adults in emergency department; inter-rater reliability of a new assessment tool. Canadian Association on Gerontology (CAG), 36th Annual Scientific and Educational Meeting, Calgary, AB, November 1-3, 2007.
43. Verdon J, **McCusker J, Dendukuri N, Belzile E**. Detection of active geriatric problems in the emergency department: use of ISAR and SEISAR. Annual Scientific Meeting, American Geriatrics Society, Seattle, WA, May 2-6, 2007.
44. Weiss D, Shrier I, **Yaffe MJ**, Wolfson C. Promotion of physical activity in primary care: Opinions and perspectives of adults aged 65 and over. Annual Meeting of the Canadian Geriatrics Society, Banff, Alberta. April 19-21, 2007.
45. **Yaffe MJ**. Evolving perspectives of family doctors towards family caregivers: a twenty year retrospective. International Symposium on the relationship between family physicians and family caregivers. FICCDAT (Festival of International Conferences on Caregiving, Disabilities, Aging and Technology). June 16-19, 2007 (Invited).
46. Zelkowitz P, **Papageorgiou A**. Maternal attitudes and behavior associated with developmental outcome in very low birth weight (VLBW) and full-term (FT) preschoolers. Presented at the Annual Meeting of the Society for Pediatric Research, Philadelphia, PA, May 6, 2007.
47. Zelkowitz P, **Papageorgiou A**. Maternal attitudes and behavior associated with developmental outcome in very low birth weight (VLBW) and full-term (FT) preschoolers. Presented at the 84th Annual Conference of the Canadian Pediatric Society, Montreal, QC, June 27, 2007.
48. Zelkowitz P, **Papageorgiou A**. Maternal attitudes and behavior associated with developmental outcome in very low birth weight (VLBW) and full-term (FT) preschoolers. Ped Res 58, electronic version 2007.
49. Zelkowitz P, **Papageorgiou A**. Maternal attitudes and behavior associated with developmental outcome in very low birth weight (VLBW) and full-term (FT) preschoolers. Pediatrics & Child Health 12(A):61A, 2007.
50. Zelkowitz P, **Papageorgiou A**. Maternal attitude and behavior associated with developmental outcome in very low birth weight (VLBW) and full-term preschoolers. Paediatrics & Child Health 12:60A, 2007.

APPENDIX G (CONT'D)

Book Chapters

1. **Ciampi A**, Rich B, Dyachenko A, Antoniano Villalobos I, Murie C, Nadon R. Locally linear regression and the calibration problem for micro-array analysis. In: Selected: Contribution in Data Analysis and Classification, Brito, P., Bertrand, P., Cucumel, G. and de Carvalho, F. (eds). 549-555, Springer, Berlin, 2007.
2. **Leblanc I**. Body: know thyself. In: Beyond the body proper: Reading the anthropology of Material life. Lock M, Farquhar J. Duke University Press, 688, 2007.
3. **Yaffe MJ**, Weiss D, Wolfson C, Lithwick M. Detection and prevalence of abuse of older males: Perspectives from family practice In: Abuse of Older Men, (ed Kosberg, JI), Howarth Press, Binghamton, New York, 47-60, 2007.

Letters and editorials

1. **Dylewski J**, The blood cult. National Review of Medicine, 4:14, 2007.

APPENDIX H

SNAPSHOT OF DCECS WEBSITE HOMEPAGE

St. Mary's Hospital Centre - Department of Clinical Epidemiology and Community Studies - Microsoft Internet Explorer

File Edit View Favorites Tools Help

Back Forward Stop Search Favorites

Address http://www.smhc.qc.ca/Epidemiology/index.html

St. Mary's Hospital Centre
Centre Hospitalier de St. Mary

Department of Clinical Epidemiology and Community Studies

Home français | home | contact us

Staff
Seminars
Research Committees
Research
Clinical Tools
Services Offered
Careers

OF INTEREST

C.A.R.E. Competition
(click for PDF)

The Department of Clinical Epidemiology and Community Studies (DCECS) at St. Mary's Hospital Center was created in July, 1993. Its main objectives are related to research and education.

The DCECS is one of five hospital-based Clinical Epidemiology units linked with the Department of Epidemiology and Biostatistics, McGill University.

The activities of the Quality Assessment Unit of the Hospital are closely coordinated with those of the DCECS.

This site is under construction and therefore some sections are not yet complete. The site is best viewed using Flash Player 8, and at a resolution of 1024x768. Adobe Reader is needed to view PDF files throughout the site - click here to download.

C.A.R.E. competition, see poster in "OF INTEREST" section for more details.

Design by Emagine Multimedia

Done Internet

Start Zahoor Chughtai - Inbox - ... R:\Epidemiology\Dept Ad... Department of Clinical Epi... DCECS Employee list 200... DCECS ANNUAL REPO... St. Mary's Hospital C... 4:12 PM

APPENDIX I

RESEARCH CONSULTATION AND COLLABORATION REPORT 2007-2008

Consultations are services offered by staff in the Department of Clinical Epidemiology and Community Studies (DCECS) and Quality Assessment (QA) Unit to assist and advise other Hospital staff, students, fellows, or residents who wish to conduct research. Consultations can include the following:

- Planning a research project
- Designing questionnaires and data collection forms
- Preparing consent forms
- Performing statistical analysis and interpreting results
- Preparing an article for publication

This report describes St. Mary's Hospital research activities for which consultation with the DCECS or the QA Unit was sought. A consultation in which a DCECS or QA staff member is a co-investigator and/or co-author on a manuscript to be submitted to a journal is called a collaborative consultation. All other projects are those in which only consultation was provided, but for which there is no publication. The first 2 digits of the consultation number indicate the year that the consultation began (e.g. DEN94-01: First project in Dentistry in 1994).

EMERGENCY DEPARTMENT

ED08-01 **Use of metered dose inhalers (MDI) vs aerosol therapy for asthmatic/copd patients in ED.** (Roger Brunner) Clarification of QA project proposal. Discussion on study design and variables to be collected. Sample chart audit demonstrated that MDI are not used. Project Postponed. Consultation provided by Linda Cardinal.

EPIDEMIOLOGY DEPARTMENT

EPI07-01 **Grant submission preparation (ASC) for nursing home project.** (Jane McCusker) Data analysis and writing methods. Preparation of grant application to Alzheimer Society of Canada. Included liaising with project Co-Investigators to solicit their input and formatting of final grant application package. Consultation provided by Eric Belzile, Yue You and David Parry.

EPI07-02 **Prognosis of major and minor depression.** (Jane McCusker) Help for data analysis, writing statistical part for paper. Consultation provided by Eric Belzile.

EPI07-03 **Development and evaluation of a tele-homecare platform for patients with cancer and their family caregivers.** (Antonia Arnaert) Estimation of cost for data management and data analysis, and budget preparation for proposal, which was funded by SMHC Foundation (see Appendix M, Project ID 07-22). Consultation provided by Eric Belzile and Zahoor Chughtai.

EPI07-04 **Measuring comorbidity in the emergency department.** (Jane McCusker) Providing assistance and supervision for statistical analysis and writing. Consultation provided by Eric Belzile.

EPI07-05 **Recognition of depression by non-psychiatric physician.** (Monica Cepoiu) Supervision of statistical analysis. Consultation provided by Eric Belzile.

EPI07-06 **Grant proposal Project DIRECT.** (Jane McCusker) Meeting and preparation. Preparation of application to CIHR, included background literature reviews, coordinating investigators meetings, approaching and liaising with project partners, budget preparation. Consultation provided by Eric Belzile, David Parry and Zahoor Chughtai.

EPI08-01 **Use of natural health products among cancer patients.** (Maida Sewitch) Sample size calculation for grant proposal (internal). Consultation provided by Eric Belzile.

APPENDIX I (CONT'D)

FAMILY MEDICINE

- FAM04-03 **Rates of VBAC offers successes and ruptures.** (Balbina Russillo) Collaboration on manuscript writing, proofreading, and formatting by Maida Sewitch. Manuscript accepted in the Journal of Obstetrics and Gynaecology (publication will appear in 2008 annual report).
- FAM07-01 **Assessment adherence to infant immunization guidelines in FMC.** (Freed-Lynn Noel-Duplessy) Discussion on possible repeat of QA project (#0405-004) with or without modifications according to implemented changes. Consultation provided by Linda Cardinal and Judy Surette.
- FAM07-02 **A survey of RN + NA student experience in clinical stage at SMHC.** (Rosanna Zappavigna) Rosanna wishes to obtain feedback on students (RN + NA) experience following their clinical stages at SMHC. Literature search done when this was being proposed as a McGill student project. Student schedules to be reviewed as to when to conduct survey for the different stages. RN and NA have very different experience and Rosanna will think about what she would like to survey for each group and when. Consultation provided by Judy Surette.
- FAM07-03 **Managers' valuation of the performance appraisal process - a survey.** (Rosanna Zappavigna) Due to a low completion rate Rosanna wants to conduct a survey of managers to obtain their opinion on the performance appraisal process. Discussed type of questions, who to survey. Literature search to be done by Gilles Teasdale of Medical Library. Consultation provided by Judy Surette.
- FAM07-04 **L'initiative des amis des bébés niveau d'implantation dans les établissements du Québec.** (Laura Haiek) Preparation of proposal that was funded by the Agence de santé et des services sociaux (see Appendix M, Project ID 07-06). Consultation provided by Eric Belzile and Jane McCusker.
- FAM07-05 **Develop a patient profile for FMC.** (Gwendolyn Goring) FMC wants to develop a client/patient profile of FMC that looks at age, language, more frequent problems/diagnosis that present level of education, occupation as well as other items that may come up during the development stage of the project. Sources of information to be looked at: FMC Medi-Visit, community info and possibly a survey of patients. Consultation provided by Judy Surette.
- FAM07-06 **Staff assessment of the Family Medicine Center mega influenza clinics 2007.** (Rosalba Guarnieri) The FMC Influenza Committee wishes to assess changes in influenza inoculation campaign of 2007 that were designed to promote efficiency and efficacy while promoting optimum patient care of the FMC patient population. Consultation provided by Judy Surette.
- FAM07-07 **Chart audit of FMC adult patient Medical Records to assess appropriate use of recording sheets.** (Rosanna Zappavigna) To determine data required to assess use of various Medical Record sheets in the FMC adult patient charts, to set up a data collection sheet for a chart audit, to verify if data is being recorded appropriately. Consultation provided by Judy Surette.

HUMAN RESOURCES

- HR07-01 **Workplace quality of life survey.** (Elizabeth Dampolias) Study design and development of questionnaire for staff satisfaction and priorities regarding workplace quality of life. Consultation provided by Linda Cardinal.

INFECTION CONTROL

- IC07-01 **Decentralized sterilization process.** (Leila Haddad) Data entry and analysis for preliminary questionnaire. Consultation provided by Linda Cardinal.

APPENDIX I (CONT'D)

MEDICINE

MED08-01 **Cardiac patient education session: Data collection and analysis.** (Rosetta Antonacci)
Requested help in collecting and analyzing data already collected. Consultation provided by Judy Surette.

NURSING

NU06-01 **Medication survey.** (Mary-Lou Foley) Assistance with preparation of an article for publication. Data management support, data analysis and help for writing statistical part for a paper. Collaborative consultation provided by Jane McCusker and Eric Belzile. Manuscript accepted in Healthcare Quarterly (publication will appear in 2008 annual report).

OBS/GYN

OBS06-02 **Time and motion study post-partum unit (4 Main).** (Marie-France Brizard) Review of already collected data to evaluate feasibility of the study. Data management support and data analysis. Consultation provided by Eric Belzile.

OBS07-01 **Effect of black cohosh on postmenopausal vasomotor symptoms.** (Dr. Hemmings) Purpose is to perform a meta-analysis of RCTs on the effect of black cohosh on postmenopausal symptoms. Collaborative consultation provided by Jane McCusker and Maninder Setia. Manuscript submitted to Menopause journal.

ONCOLOGY

ON06-02 **Empowerment tool.** (Rosanna Faria) Purpose is to find a tool to measure empowerment that could be used in Oncology and Psychiatry Crisis Services. Proposal funded by SMHC Internal Research Grants Program (see Appendix M, Project ID 07-03). Collaborative consultation provided by Jane McCusker.

ON07-01 **Picc Line reinsertion rates and reasons for Picc Line removed in Cancer Care Out-Patients.** (Luisa Luciani) Cancer Care wants to look at Picc Lines in out-patients which regard to infection and replacement rate. Average length of time a Picc Line stays in, and why it was removed. May lead to QI project, depending on results. Consultation provided by Judy Surette.

ON07-03 **Monitor use of Picc Lines in Cancer Care.** (Luisa Luciani) Develop a data collection sheet to record Picc Line information on insertion and removal (per patient) each time a line is inserted or reinserted (dates, reasons for insertion and removal). Consultation provided by Judy Surette.

PSYCHIATRY

PS07-01 **Lifestyle management group pilot project** (Michèle de Gonzague) Study design including sample size, indicators, and creation of data collection sheet. Reviewed data and summary report. Consultation provided by Linda Cardinal.

PS07-02 **Evaluation of skills building group for patients with psychotic disorders.** (K. Kouacevich) Assess the possibility of analysis of data collected at the beginning, middle, and end of the year long program. Data from brief symptom inventory and quality of life questionnaires and analysis of the results of these tests. Consultation provided by Judy Surette.

PS07-03 **Characteristics of elderly hospitalized patients with delirium who are prescribed antipsychotics.** (Michel Elie) Data analysis for publication. Consultation provided by Eric Belzile.

PS07-04 **The 6 and 12 month outcomes of older medical inpatients who recovered from sub-syndromal delirium (SSD).** (Martin Cole) Helping prepare of database and statistical analysis for publication. Consultation provided by Eric Belzile.

APPENDIX I (CONT'D)

- PS07-05 **Antipsychotic and mortality among elderly with delirium.** (Kenneth Boss) Provided assistance for re-submission of paper. Consultation provided by Eric Belzile.
- PS08-01 **Proportion of suicidal patients referred to SUPC (service d'urgence psychiatrique et de crise).** (Suzanne Lamarre) Discussion to define objectives of the project. First step to obtain proportion of suicidal patients referred to SUPC. Availability of data from ED database. Consultation provided by Linda Cardinal.
- PS08-02 **Feedback from patients on rehabilitation services questionnaire.** (Joanne Assaly) Suggestion for written process to standardize introduction of questionnaire to patients. Discussing relevant questions to obtain feedback from patients and on completion of questionnaire. Consultation provided by Linda Cardinal.
- PS08-03 **Meta analysis of persistent delirium in older patients.** (Martin Cole) Data analysis and data entry. Consultation provided by Eric Belzile.
- PS08-04 **Quality of service by secretarial/clerical staff.** (Lyne McCreedy) Discussion on general principles and steps for QA project and patient survey. Consultation provided by Linda Cardinal.
- PS08-05 **Patient empowerment.** (Laurie Lieberman) Patient empowerment through participation in interdisciplinary rounds. Discussion on study design: sample, control group, outcome, measures. Consultation provided by Linda Cardinal.

REHABILITATION

- RE07-01 **Satisfaction survey of nurses following a presentation by music therapy stagiaire.** (Stephanie Mathews) Stephanie asked for a review of the satisfaction survey which will be given to 10-20 nurses following a presentation by a music therapy student. She wanted advice on the clarity of questions and the answer scale to be used. This will not result in a project. Consultation provided by Judy Surette.
- RE08-01 **Survey of O.T. services on post-op hip and knee inpatients.** (Nathalie Khoury) Consultation on doing a patient satisfaction survey of post-op patients on the services provided by Occupational Therapy. Consultation provided by Judy Surette.
- RE08-02 **Hip and knee elective surgery patients discharged (with CLSC visit or not) to re-hab or home.** (Diane Valentini) requested help in designing a data collection sheet for indicators on hip + knee elective surgery patients. Consultation provided by Judy Surette.

SURGERY

- SUR04-01 **Time & motion study for 6 North/6 South nurses.** (France Desjardins) Preparation of paper for publication. The paper was sent to Nursing Leadership Journal on March 5, 2008. Collaborative consultation provided by Jane McCusker (publication will appear in 2008 annual report).
- SUR08-01 **Sperm DNA damage on pregnancy meta-analysis.** (Armand Zini) Assisting in meta-analysis to confirm and add results (combining OR). Consultation provided by Eric Belzile.



8th Annual Research and Quality of Care Symposium
PATIENT EMPOWERMENT
Throughout the continuum of care
Wednesday, November 21st, 2007 – SMHC Auditorium

Program of Events

08:00 - 08:15	Registration / Poster Viewing	
08:15 - 08:30	Welcome	Dr. Arvind Joshi , CEO – Director General
08:30 – 08:45	Opening Remarks	Markirit Armutlu , QRM Coordinator, Symposium chairperson
	Empowerment in Theory & Practice	Zita Kruszewski , Clinical Ethicist
08:45 - 09:45	The Role of Empowerment in Patient Centered Care	
	Introduction:	Dr. Mark Yaffe , MD, Family Medicine
	GUEST SPEAKER: Moira Stewart , Professor, Department of Family Medicine, The University of Western Ontario, Director, Centre for Studies in Family Medicine	
SESSION 1		Moderator: Diana Valentini , Physiotherapist
09:45 – 10:05	Measures of empowerment - Rosanna Faria , Psych.Cancer Care / Suzanne Lamarre , MD Mental Health	
10:05 – 10:25	The pivot nurse's role in patient empowerment - Dail Jacob , Pivot RN, Cancer Care	
10:25 – 10:45	Legal perspective ...a question of rights - Christine Baudouin , Lawyer, Heenan-Blakie	
10:45 – 11:00	Coffee Break / Poster Viewing	
SESSION 2		Moderator: Sophia Andriopoulos , Program Manager
11:00 – 11:20	Determining Level of Care - Who are we empowering? - Benjamin Schiff , MD, Internal Medicine	
11:20 – 11:40	Empowering parents: From birth and on - Jennifer Somera , CNS/ Chantal Vincelette , HN, Maternal Child	
11:40 – 12:00	End-of-life Family Conferences - Peter Steinmetz MD / Annie Chevrier RN Critical Care	
12:00 – 12:15	ABSTRACT WINNERS	Moderator: Jane McCusker , MD, Director DCECS
12:15 - 13:15	Lunch / Poster Viewing	
SESSION 3		Moderator: Marie-France Brizard , Program Manager
13:15 – 13:45	Life & Death Choices	
GUEST SPEAKERS: Marie-Josée Caron MD & Isabelle Leblanc MD, Palliative care & Family medicine		
13:45 – 14:05	Navigating Perinatal Grief Through Knowledge - Mary-Pat Hebert , SW / Cindy Morneau , Spiritual care	
14:05 – 14:25	The effectiveness of the Cardiac Teaching program - Rosetta Antonacci , HN, Medicine	
14:25 – 14:45	Patient counselling for safe chemotherapy - Lucie Surprenant , Pharmacist, Cancer Care	
14:45 - 15:00	Coffee Break/Poster Viewing	
DEBATE ON THE MOTION: "Patient should be able to choose their tests & treatments"		
15:00 – 15:45	Moderator: Micheal Bonnycastle MD, Int. Med. & Geriatrics	
	For: Michele De Gonzague , Nurse clinician	& Mark Yaffe , MD, Family Medicine
	Against: Joe Dylewski , MD, Chief of Laboratories	& Lorna Dowson , Audiologist
15:45 - 16:00	Wrap-up / Closing Comments	
	Closing remarks: Bruce Brown , MD., Vice-President, Professional Services, SMHC	



8^e Symposium annuel sur la recherche et la qualité de soins
LA RESPONSABILISATION DU PATIENT
dans un contexte de continuum de soins
Le mercredi 21 novembre 2007 – Auditorium CHSM

Programme

8h00 – 8h15 **Inscription / Exposition d'affiches**
 8h15 – 8h30 **Mot de bienvenue :** **Arvind Joshi**, M.D. Directeur général
Mot d'ouverture : **Markirit Armutlu**, Coordonnatrice QOR, présidente du symposium
 8h30 – 8h45 Empowerment in Theory & Practice - **Zita Kruszewski**, Éthicienne clinique
 8h45 – 09 :45 **The Role of Empowerment in Patient Centered Care**

Introduction: **M. Yaffe, MD**, Omnipraticien, Médecine familiale

CONFÉRENCIÈRE: **Moira Stewart**, professeure, Département de médecine familiale,
 The University of Western Ontario; directrice, Centre d'études en médecine familiale

1^{ère} SESSION Modératrice: **Diana Valentini**, Physiothérapeute
 09:45 – 10:05 Measures of empowerment - **Rosanna Faria**, Psych.Oncologie/**Suzanne Lamarre**, M.D. Santé mentale
 10:05 – 10:25 The pivot nurse's role in patient empowerment - **Dail Jacob**, Inf. pivot, oncologie
 10:25 – 10:45 Legal perspective ...a question of rights - **M^e Christine Baudouin**, Heenan-Blaikie

10:45 – 11:00 **Pause santé / Exposition d'affiches**

2^e SESSION Modératrice: **Sophia Andriopoulos**, Gestionnaire de programme
 11:00 – 11:20 Level of Care sheet - Who are we empowering? **Benjamin Schiff**, M.D.
 11:20 – 11:40 Empowering parents: From birth and on - **Jennifer Somera /Chantal Vincelette**, Soins mère-enfant
 11:40 – 12:00 End-of-life Family Conferences - **Peter Steinmetz M.D. / Annie Chevrier**, Inf., Soins intensifs
 12:00 – 12:15 **GAGNANTS DES RÉSUMÉS :** Modératrice: **Jane McCusker**, M.D., Directrice du DCECS

12:15 – 13:15 **Dîner / Exposition d'affiches**

3^e SESSION Modératrice: **Marie-France Brizard**, Gestionnaire de programme
 13:15 – 13:45 **Life & Death Choices**
CONFÉRENCIÈRES: **Marie-Josée Caron M.D. & Isabelle Leblanc M.D.**, Soins palliatifs & médecine familiale
 13:45 – 14:05 Navigating Perinatal Grief through Knowledge – **Mary-Pat Hebert, TS/Cindy Morneault**, soins spirituels
 14:05 – 14:25 The effectiveness of the Cardiac Teaching program -**Rosetta Antonacci**, Inf. chef, Médecine
 14:25 – 14:45 Patient counselling for safe chemotherapy - **Lucie Surprenant**, Pharmacienne en oncologie

14h45 – 15h00 **Pause santé/ Exposition d'affiches**

DÉBAT: **Le patient devrait pouvoir choisir ses examens et ses traitements**

15:00 – 15:45 Modérateur: **Michael Bonnycastle**, M.D., Gérologue
 Pour: **Michele De Gonzague**, Inf. clinicienne & **Mark Yaffe**, M.D., Médecine familiale
 Contre: **J. Dylewski**, M.D., Chef des laboratoires & **L.orna Dowson**, Audiologiste

15:45 – 16:00 **Clôture du symposium**
Mots de clôture: **Bruce Brown**, M.D., vice-président, Services professionnels CHSM

APPENDIX K

DCECS RESEARCH SEMINARS
2007-2008

Date	Title	Speaker
April 11, 2007	Consultation with specialists for persons with suspected rheumatoid arthritis: a population-based study	Debbie Feldman, BScPT, MSc, PhD Associate Professor Université de Montréal, Direction de la Santé Publique de Montréal
April 25, 2007	Into the black box: a glimpse into the last 3 months of life and the first 6 months of bereavement	Robin Cohen, PhD Research Director and Assistant Professor, Departments of Oncology and Medicine, McGill University, Project Director, Jewish General Hospital
May 3, 2007	Primary care based psychosocial interventions for older adults	Patricia Areán, PhD Clinical Psychologist and Associate Professor, Department of Psychiatry, University of California, San Francisco
May 9, 2007	Colorectal cancer screening in Canada	Maida Sewitch, PhD Assistant Professor of Medicine, McGill University Associate Member, Department of Clinical Epidemiology & Community Studies, SMHC
May 23, 2007	Smoking cessation in the 21 st century	Kristian Fillion, MSc PhD Candidate, Department of Epidemiology, Biostatistics & Occupational Health, McGill University
October 25, 2007	Health services use for mental health problems by community-living Canadian seniors with depression	Martin Cole, MD, FRCPC Senior Psychiatrist, St. Mary's Hospital Professor of Psychiatry, McGill University
November 8, 2007	Determinants of safe discharge of seniors from the emergency department	Jane McCusker, MD, DrPH Head, Department of Clinical Epidemiology & and Community Studies, SMHC
November 22, 2007	Zyban as an effective smoking cessation aid in patients post-ACS: the ZESCA trial	Mark J. Eisenberg, MD, MPH Associate Professor of Medicine, Divisions of Cardiology and Clinical Epidemiology, Jewish General Hospital

APPENDIX K (CONT'D)

DCECS RESEARCH SEMINARS (CONT'D)
2007-2008

Date	Title	Speaker
December 6, 2007	Développement et validation d'un outil d'évaluation du statut fonctionnel pour les personnes âgées en visite à l'urgence	Nathalie Veillette, Occ. Therapist, PhD candidate, Université de Montréal
January 10, 2008	Bias versus evidence in studies of inhaled corticosteroid therapy in COPD	Samy Suissa, PhD Professor, McGill University, Director, Pharmacoepidemiology Research Unit
January 24, 2008	Healthcare as a refuge: Experiences of HIV-infected, sub-Saharan refugees cared for in a Canadian multidisciplinary clinic	Norbert Gilmore, PhD, MD Professor of Medicine, McGill University Senior Physician, McGill University Health Centre; Associate Director, McGill AIDS Centre; Member, McGill Centre for Medicine, Ethics and Law
February 14, 2008	Colorectal cancer screening in primary care: What makes it work	Maida Sewitch, PhD Assistant Professor of Medicine, McGill University; Medical Scientist, MUHC; Associate Member, Departments of Clinical Epidemiology and Community Studies, SMHC and Epidemiology, Biostatistics and Occupational Health, McGill University
February 28, 2008	Égoïstes, demandants, trop occupés? Qui sont les baby-boomers aidants	Ignace Olazabal, PhD Researcher CREGÉS – CSSS Cavendish/ École de travail social (UQÀM)
March 13, 2008	Quality of care and quality of life: Report on a study of ESRD hemodialysis patients' perspectives	Dawn Allen, PhD Post-doctoral researcher, McGill Programs in Whole Person Care
March 27, 2008	Easy as "ABC?" The Failure of Health Communication Efforts in counteracting Condom Mistrust in Namibia	Nicole Rigillo, M.A. Research Coordinator Department of Clinical Epidemiology and Community Studies, SMHC