

# Journal

2013 • 2014 | ENGLISH VERSION



PARC NATIONAL DU  
**MONT-MÉGANTIC**







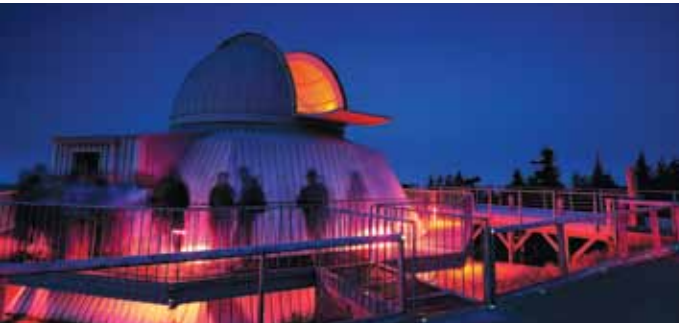
# THE MUST-DOS



## ► DAYTIME VISIT OF THE ASTROLAB

**An introduction to astronomy, a wonderful journey for the whole family!**

Daytime visits offering the discovery of the greatest mystery of all : What is the Universe ? Located at the foot of Mount Mégantic, the ASTROLab is an astronomical activity centre that includes a high-definition multi-media room, three exhibitions and the Velan Observatory.



## ► ASTRONOMY EVENINGS

**Dazzled by the stars**

At the heart of the *first International Dark Sky Reserve*, the ASTROLab and the Popular Observatory will guide you to the borders of the Universe, every summer evenings! With a multitude of telescopes operated by passionate presenters, the sky will no longer have any secrets. The multimedia equipment will allow you to travel through the stars as if you were there. Offer yourselves this unforgettable experience!



## ► MOUNT SAINT-JOSEPH TRAIL

**The Pilgrims rest, the Inspiration, the Ascension, the Revelation and the Sanctuary**

The ascent of the Mont-Saint-Joseph path leads to a boreal type climate. New view point locations with names inspired by the origin of its colonization, allow you to contemplate the immensity of the Appalachian Mountains. A path to rediscover! In addition to approximately 60km of high altitude trails and three summits over 1 000 meters where you will discover the diversity of the landscapes and the ecosystems of the mountain.



## ► CIMES TRAIL

**The Gateway to the Valley, the Dragons Rest, The Doorway to the Sky, The Peak of the Dawn**

Recently opened, the Franceville Sector offers a magnificent hike on the Cimes trail. A unique experience as you reach for the first time the spectacular rocky crest of Franceville as well as the breath taken valley of the brook of the mountain with its waterfalls.



## ► SNOWSHOOING AND CROSS COUNTRY SKIING

**The most snow covered area of Southern Quebec**

The winter at Mount Megantic with its exceptional accumulation of snow is rich with unforgettable landscapes! With 44 km of snowshoe trails at high altitudes, 28 km of cross-country skiing trails surrounded with white trees! And a chance at a unique journey from the snow to the stars!

# WELCOME



## THE STORY OF OUR UNIVERSE, OUR EARTH, OURSELVES

The Parc National du Mont-Mégantic recounts the ultimate history – the story of our universe, our Earth, ourselves. This is our story. Indeed, life as we know it today – the very existence of the Earth itself – was born out of the beginnings of our universe. We are stardust. This is surely one of the greatest discoveries of the 20<sup>th</sup> century. Protecting and preserving life and the universe will surely be one of the greatest challenges of the 21<sup>st</sup> century.

### ENTRY FEES VALID FROM APRIL 1, 2013 TO MARCH 31, 2014

CATEGORY OR GROUP	DAILY RATES	ANNUAL PARK CARD	ANNUAL NETWORK CARD
Adult (18 or over)	\$6.50	\$32.50	\$58.50
Child (6 to 17)	\$3	\$15	\$27
Child (0 to 5)	Free	Free	Free
1 adult with children 6 to 17	\$9.50	\$47.50	\$85.50
2 adults with children 6 to 17	\$13	\$65	\$117
Organized adults group	\$5.75	N/A	N/A
Organized youth group (aged 6 to 17)	\$2.50	N/A	N/A
School or student group	Free	N/A	N/A

Taxes included. Annual Park or Network card is valid for 12 months.  
The prices, terms and services mentioned in this journal are subject to change without notice.

## Your Safety : Your Responsibility



Outdoor activities can involve certain risks. Make sure that you have the skills and abilities required for the activity you choose. It is important to know the risks inherent to this activity, to respect your limits and to use appropriate equipment. For more information, we invite you to consult our Web site at [sepaq.com](http://sepaq.com).

## REGULATIONS



To contribute to improving the quality of the park experience, an entry fee was established by the government. You must always carry your receipt or your annual card during your visit.



To preserve the natural riches for future generations, it is prohibited to remove natural elements (animals, plants, dead wood, rocks, etc.).



The flora is sensitive to being trampled. If we multiply the impacts of thousands of visitors, it's easy to understand why it is mandatory to stay on the hiking trails.



Nature exhibits exemplary equilibrium. The animals find everything they need to eat here, and that is why feeding wildlife is prohibited. In this respect, it is also prohibited to leave food or garbage unsupervised. Keep them in your car.



Domestic animals are prohibited in Québec's national parks. But guide dogs and service dogs accompanied by their foster families are admitted. However, these dogs must be easily identifiable, wearing the Mira scarf or harness. Those in charge of the animal must carry the foundation's letter of accreditation.



It's great to enjoy an authentic natural environment that is clean and healthy! Carry out your garbage, leave it in the containers provided, and take home any harmful substances, such as soap, oil, combustibles or pesticides.



For the preservation of the milieu and for your safety, only a certain number of activities are allowed in these parks. Plan your visit and first check the list of activities that are allowed in the parks you plan to visit.

# DISCOVER NATURE ACTIVITIES...



## AT FRANCEVILLE SECTOR



### ► July and August

#### **7 p.m. (every other night) Evening Chat**

Comfortably settled on the big gallery of the Franceville Welcome Center, enjoy the story being told about the mountain and its region. This interactive chat along with the visual presentation will certainly give you a great perspective of the area by sharing your discoveries and asking your questions to our passionate naturalist. In midsummer;  
LENGTH: 45 min.

#### **10 a.m. (every other day) Guided Hike on the Promenade du ruisseau**

By a beautiful summer morning, enjoy a guided walk along the brook on the Promenade du ruisseau trail. You will follow the magnificent stream which patiently sculptured the valley over the years, then during a stop at the Plage des galets (pebble beach) discover the unsuspected riches of the brook and its tiny inhabitants. A perfect opportunity to contemplate and explore all the beauty of the maple grove.  
LENGTH: 1 hour

## AT THE VISITORS CENTRE AND ASTROLab



### ► From mid-July to late August Spring/autumn: weekends

#### **12 p.m. – 4 p.m. Enjoy the day sky**

At mont Mégantic, it is not only the night sky which puts on a show! The moment you arrive at the park, put your eye to the telescope to observe the Sun in a safe and exploratory fashion. Our star is the only one from where we can observe the surface, and a telescope equipped with adapted filters allows us to see some fascinating details such as blemishes and protuberances which are larger than Earth itself!

The altitude and the relief here have a remarkable influence on the ambient conditions. Pressure, temperature, humidity, wind and clouds all join forces to create a unique atmospheric dynamic which we invite you to explore.

#### **1:45 p.m. Workshop for children**

Accompanied by an animator, the children will have the chance to design, fabricate and fly their own rocket!  
LENGTH: 45 min.

## AT MOUNT SAINT-JOSEPH



### ► From mid-July to late August Spring/autumn: weekends

#### **1 p.m. – 5 p.m. What an eyeful!**

Take a look through our giant binoculars to observe the magnificent landscape of Mount Saint-Joseph. A guide will be available throughout the afternoon to answer any questions.

#### **1:30 p.m. and 3:30 p.m. The amazing history of Mount St. Joseph**

Spend an afternoon this summer gazing at the remarkable landscape and listening to the amazing story of Mount St. Joseph. Warm and welcoming, an historic character will transport you back to the end of the 19<sup>th</sup> century when the region was being settled. Through his own story and that of his parents – Notre-Dame-des-Bois pioneers – you will hear the tale of this chapel overlooking the Appalachians.

*All the activities above are included in the Park admission!*



# LODGING IN THE PARK



## OBSERVATORY SECTOR



### › Rustic camping

Thirteen 3.6 m x 3.6 m (12 ft x 12 ft) rustic platforms offer campers an opportunity to sleep under the stars. They are located on the site of Grande-Ourse hut, 2 km from the welcome center. Campers are asked to erect their tents on the wooden platforms to protect the surrounding vegetation. Pegs to help anchor tents are available at the reception centre.

### › Shelters

Two shelters of a maximum capacity of eight people are available upon reservation. These shelters are located approximately 1 km (Petite-Ourse), and 2 km (Grande-Ourse) from the welcome centre, and are accessible by foot, on skis or snowshoes. Each of them offers one table, chairs, a stove and rooms with double beds.

### › Summit huts

Two huts are available for an unforgettable night in winter, spring and fall. The Voie lactée hut, at the peak of Mount Mégantic, has room for eight. The Mount St. Joseph hut accommodates two. They will take your breath away! Summit shelters do not have access to drinking water.

### › Prospector Camps and Rustic Shelters

Four prospector camps of a capacity of two people are available all year round. Located at 2 km from the welcome center, they offer beds, one table and a wood stove. Near each one, you will find firewood and a pit toilet. The Polaris shelter, just at 1 km from the welcome center, sleeps 4 people.

### › Lodging Packages

Several inns, B&Bs, chalets, tee pees and camp sites are located near the Park. More details on our website.

## FRANCEVILLE SECTOR



### › Serviced Camping

Our new camping area will be accessible by vehicle. There are 21 sites with two services (water and electricity), and 16 sites without services.

### › Huttopia

Ten Huttopia tents are available this year in the Franceville sector. They offer beds, efficient heating, lighting and the basics for cooking. All you have to bring is your own bedding and food.

## NATURE'S...

### Boutique

Take advantage of our three boutiques - located at the ASTROLab and in the two park welcome centres – to bring home a souvenir of your stay under the stars or to offer a gift which celebrates the first International Dark Sky Reserve.



### Convenience store

Located in the welcome centre of the Franceville sector, the “dépanneur” offers such basics as wood, ice, beverages and other necessary items to prepare quick meals and snacks. There is also an array of regional products.

### Restaurant

The restaurant in the Observatory sector offers a menu which is complete, light and very healthy. It is open daily during the summer months and on weekends during the winter period. It is an ideal spot for a break between park activities.



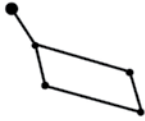


PUT IT YOUR COLORS!

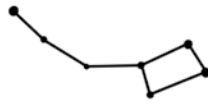
find the constellations hidden in the starry sky



ORION



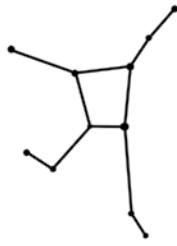
LYRE



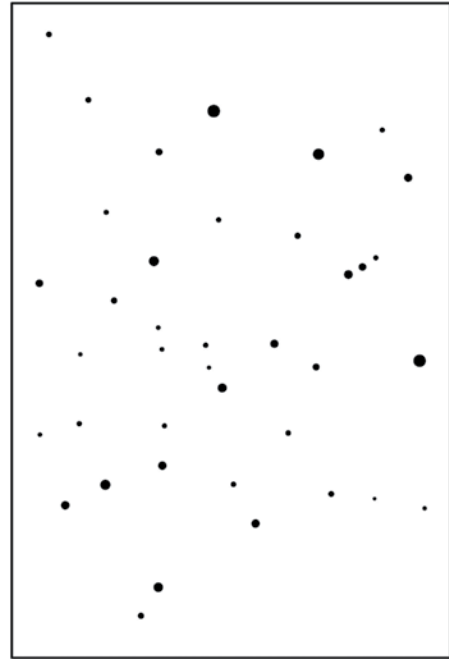
PETITE OURSE



CYGNE



HERCULE



emma and the chapel



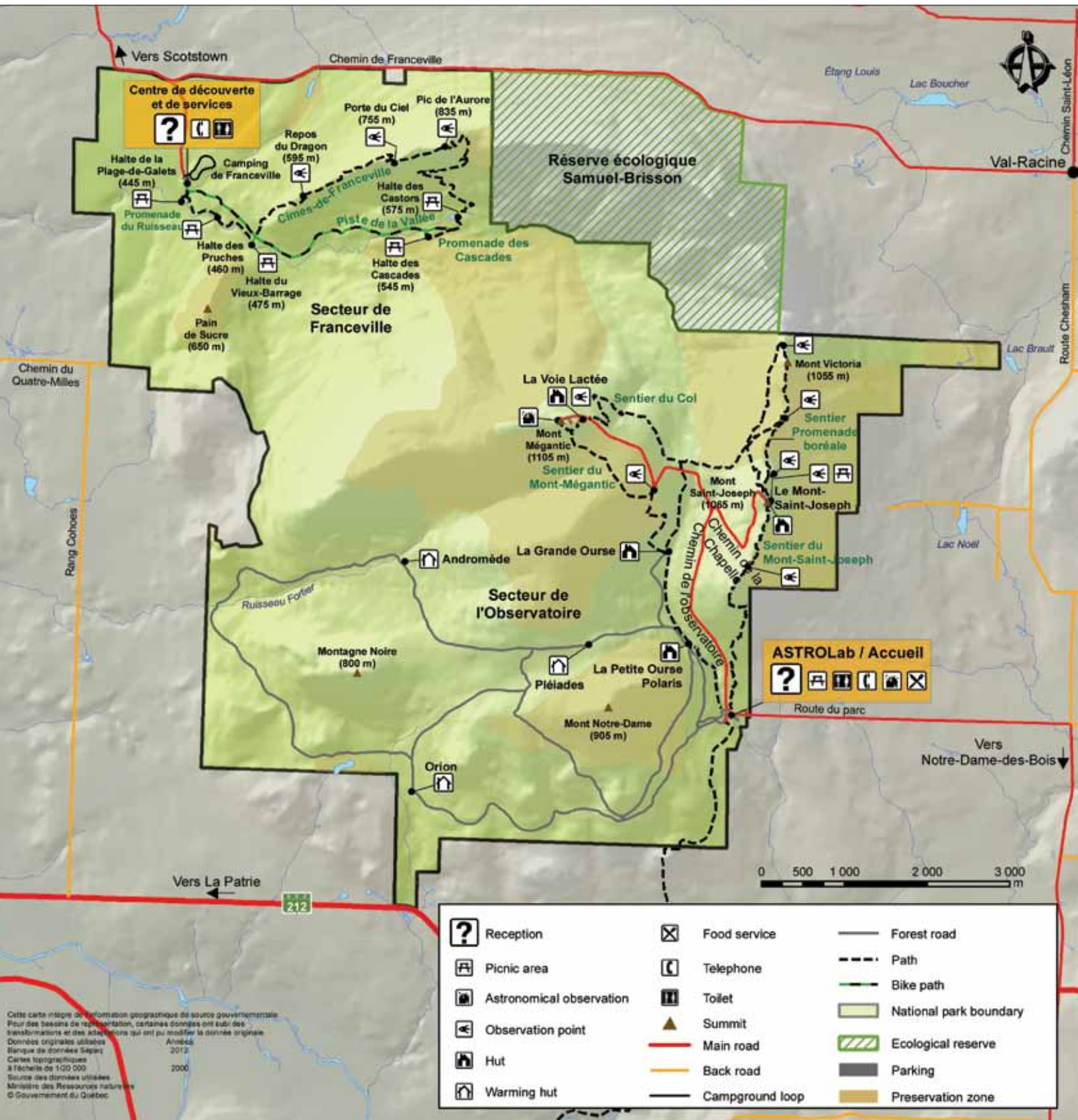
animals from the park





# GENERAL MAP

## PARC NATIONAL DU MONT-MÉGANTIC





# TRAILS



## OBSERVATORY SECTOR

### Promenade de la Petite-Ourse (sentier du Mont-Mégantic)

- DISTANCE AND TIME: 1 km - 45 minutes - linear
- DEGREE OF DIFFICULTY: Easy
- DESCRIPTION: Follows the ruisseau Deloge with waterfalls. Gives access to tables and to the Petite-Ourse Hut.

### Promenade Boréale

- DISTANCE AND TIME: 1 km - 45 minutes - linear
- DEGREE OF DIFFICULTY: Easy
- DESCRIPTION: Wood sorrel fir stands. Gives access to a belvedere onto the valley of the Mountain.

### Mont-Mégantic loop

- DISTANCE AND TIME: 10.7 km - 4 to 7 hrs
- DEGREE OF DIFFICULTY: Difficult
- DESCRIPTION: Diverse forest: fir and maple. Gives access to Voie Lactée Hut at the summit of Mont-Mégantic.

### Mont-Saint-Joseph loop

- DISTANCE AND TIME: 8.5 km - 3 to 5 hrs
- DEGREE OF DIFFICULTY: Difficult
- DESCRIPTION: Discovery Panels loop focussing on forest transition. Gives access to the chapel and the sanctuary.

## FRANCEVILLE SECTOR

### Promenade du ruisseau

- DISTANCE AND TIME: 2.5 km - 1 h
- DEGREE OF DIFFICULTY: Easy
- DESCRIPTION: Along the mountain brook. Gives access to the Plage de galets, to the Halte des Pruches and to the Halte du Vieux-Barrage.

### Sentier des Cimes loop

- DISTANCE AND TIME: 11.2 km - 3 to 5 hrs
- DEGREE OF DIFFICULTY: Intermediate
- DESCRIPTION: Cycling and walking trail. Gives access to Repos du dragon, Porte du ciel and Pic de l'aurore.

*There is no water at the summits; be sure to bring enough drinking water for your hike. Bring warm clothing; it can be chilly at the summits.*



# DAYTIME ASTRONOMY ACTIVITIES

## FESTIVAL OF POPULAR ASTRONOMY

**Fridays from July 12<sup>th</sup> to August 23<sup>rd</sup>**

**8 p.m.:** Special presentation at the ASTROLab : *The Solar Maximum and the auroras borealis.*

- Mount Mégantic Astronomical Observatory for observation in the 1.6-metre telescope and presentations on the nature of the research.  
LENGTH: 1 hour
- Mount Mégantic Popular Observatory for observation in the 24-inch telescope and special presentation if cloudy weather : *Curiosity on Mars*  
LENGTH: 1 hour

**11:40 p.m.:** Return to base.

## 30<sup>TH</sup> ANNIVERSARY SPECIAL !

**To underline the 30<sup>th</sup> anniversary of the Festival and the 35<sup>th</sup> anniversary of the Observatory, the Festival will present a special edition all night long, on July 13<sup>th</sup>, 2013.**

## RATES FOR ASTRONOMY ACTIVITIES

ACTIVITY	ADULT	CHILD	FAMILY
ASTROLab visit by day	\$14.75	\$7.50	\$37.00
Observatory visit by day*	\$11.25	\$6.50	\$31.50
ASTROLab evening at the base	\$19.00	\$9.50	\$47.50
Observatory evening at the summit*	\$22.25	\$12.00	\$59.00

*Park admission extra; see rates on page 4. Rates subject to change without notice. Taxes not included. Packages including accommodation available.*

*\*Transportation to the summit by bus included in the admission fee.*

## TOURING THE OBSERVATORY

The Mount Mégantic Observatory, located at the top of the mountain, is accessible every day of the summer as part of our guided tours.

You will be accompanied by an enthusiastic guide who will help you discover the best performing telescope (1.6 metres) in Canada and explain its operation as well as the work and research accomplished by the astronomers.

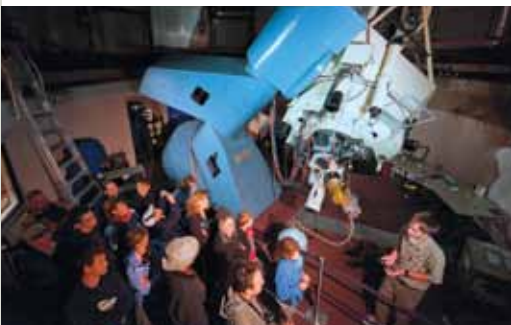
The Mont-Mégantic Observatory, situated in 1 100 m of height, was built in 1978. It enjoys a big fame by the quality of the instruments which are installed there, and for its particular geographical situation: it is in the heart of the 1<sup>st</sup> International DarkSky Reserve, what gives him a quality of sky which makes envy the other observatories in the country.

Take advantage of your visit to the summit to participate in the Reading the Scenery activity From a vantage point at more than 1,000 metres, gaze at the breathtaking landscape and learn all about its main features.

- Between 12:30 p.m. and 4:30 p.m. (hourly)
- Length: 40 minutes

In summer, the Observatory is accessible by a shuttle service.

*Check schedules at the welcome centre.*



## TOURING THE ASTROLab

Located at the foot of Mount Mégantic, the ASTROLab is an astronomical activity centre that includes a high-definition multi-media room, three exhibitions and an observatory. Daytime visits offer you a voyage of discovery concerning the greatest mystery of all: What is the Universe? The journey is divided into three stages:

- Guided (or self-guided) tours of the exhibition *From Starry Sky to Infinite Universe*. Relive the history of the evolution of space from the time of our ancestors up to this Universe of unimaginable magnitude that we are now discovering.
  - Watch the high-definition film, *Cosmic Rhythms*. When we observe the starry sky, it seems unchanging. Nothing changes, everything returns according to a very precise cycle. Nevertheless, we notice today that the Universe is not unchanging: it evolves. On scales of time which exceed us, the cosmos is transformed. The Universe has a history. Live a fascinating voyage through space and the history of the Universe !
  - A guided (or self-guided) visit of the exhibition *Birth and history of the cosmos* in the Cosmolab-Velan: explore the mysteries of cosmology and discover the secrets of matter thanks to the new Organizational Pyramid !
- Between 12:30 p.m. and 4:30 p.m.
  - Length: 2 hrs.

*Check schedules at the welcome centre.*



# NIGHTTIME ASTRONOMY ACTIVITIES

## ASTRONOMY NIGHT AT THE ASTROLab

The Astronomy Night at the ASTROLab (at the base of the mountain) begins in the Multimedia Room with the following special presentations:

- **Celestial Movements:** are you familiar with the movements of the constellations across the sky? It is by observing them that human beings learned how to establish their own presence in space and time. Under a virtual sky, observe the fascinating dance of the celestial sky overhead, then climb higher into space to travel to the outer edges of the Universe. This presentation can be shortened if the sky is clear.
- **Maximum solar energy!:** After years of tranquility, the Sun shows increasing signs of activity today: sunspots, eruptions and magnetism are so many indications as our fascinating star is in full boiling! Here on Earth, the solar activity is at the source of one of the most prodigious natural phenomena which are: the polar auroras. How do they form? How plan them? All the answers and the images on big screen!
- Introduction to the Star Identifier.

The 2<sup>nd</sup> part of the evening activity is bound to weather conditions :

- If the sky is clear: observation of the stars at the outside telescopes and the Velan-Observatory on the roof of the ASTROLab.
- If the sky is cloudy, the activity continues inside with presentations rich in content, in images and in interactivity :
  - Astronomy News
  - Interactive Cosmos
  - Night Hike (if complete)

*Reservations required.*

- From 8 p.m. to 11 p.m.
- From 9 p.m. to 12 a.m. on Fridays from July 12<sup>th</sup> to August 23<sup>rd</sup>.
- From 7:30 p.m. to 10:30 p.m. starting on August 15<sup>th</sup>.

## ASTRONOMY NIGHT AT THE POPULAR OBSERVATORY

Located at the top of Mount Mégantic, near the Astronomical Observatory, the Popular Observatory has a 24 inches telescope and is a unique multimedia observatory, entirely dedicated to the public. To the program:

- If the sky is clear : Observation through the 61 cm telescope and on the magnificent observation platform with tilted benches.
- If the sky is cloudy, the activity will be held inside with presentations rich in content, in images and in interactivity:
- **Curiosity on Mars!** On August 6<sup>th</sup>, 2012, after an interplanetary journey of 560 million kilometers, the robot Curiosity touched the ground of the red planet. The six-wheeled geochemist will spend more than two years to study rocks and ground with his sophisticated scientific instruments. The purpose? Determine if the conditions convenient to the emergence of the life have already existed on Mars. Follow the progress of this historic mission and see in scoop of the spectacular images freshly sent back by the Martian surface.
- Introduction to the Star Identifier.
- **Cosmos session.** A unique opportunity to ask all your questions and to discuss about the great mysteries surrounding the Universe and to enjoy the audiovisual arsenal of the popular observatory.

*Reservations required.*

- From 8 p.m. To 11 p.m.
- From 10 p.m. to 1 a.m.
- From 11:30 p.m. To 2:30 a.m.
- 30 minutes earlier starting on August 15<sup>th</sup>.



## THE SUMMER SKY

When evening falls on a hot summer's day and the deep blue of twilight announces the coming infinity of a starry nighttime sky, look to the East to see three stars "lighting up" in the firmament, three stars that form what is traditionally called the Summer Triangle.

The first star to appear is sparkling Vega, the forth-brightest star in the sky, located 26 light-years from Earth. In August, this star is joined by Zenith at a point directly overhead. The second point of the Summer Triangle is Deneb, the brightest star in the Cygnus constellation. Deneb is a very bright "supergiant" star situated near 1500 light-years from Earth, and it is one of the most distant stars we can see with the naked eye. More South, Altair, the third star in our giant triangle, is the brightest member in the Aquila or eagle constellation. Just east of Aquila, Other countless marvels hide in the immensity of space. They're yours to discover, at home or at Parc National du Mont- Mégantic.

To learn more on the visible celestial objects, investigate The Sky of the Month on our Web site [www.astrolab.qc.ca](http://www.astrolab.qc.ca)





## MOUNT-MÉGANTIC INTERNATIONAL DARK SKY RESERVE

A collective heritage to be protected



Huttopia



## A PARCS QUÉBEC'S EXCLUSIVE!

Discover the **Huttopia tent**, a simple and comfortable way to discover the joys of camping without all the lugging.

Each unit includes:

- two big beds
- supplementary heating and lighting
- a propane-operated warming tray and a mini-fridge
- everything you need to prepare meals

### 2013 SEASON

80 new tents

#### 2 new destinations:

- Îles-de-Boucherville
- Lac-Témiscouata

LOW SEASON <sup>(1)</sup>  
\$ 99 /night

HIGH SEASON <sup>(2)</sup>  
\$ 116 /night

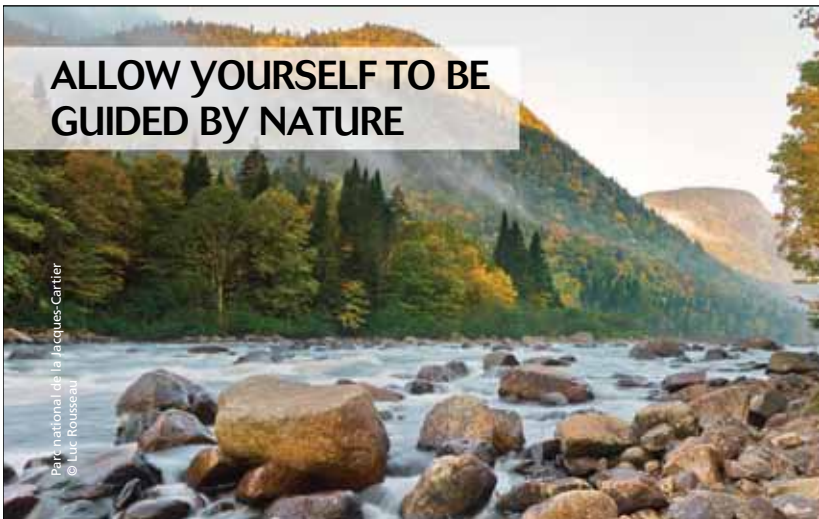
Capacity of 5 people (max. 4 adults)

(1) From Sunday to Thursday until June 20, 2013 and from September 8, 2013.

(2) Fridays, Saturdays, holidays and every day from June 21, 2013 to September 7, 2013. Taxes and entrance fee not included

Online reservation: [parcsquebec.com/huttopia](http://parcsquebec.com/huttopia)

## ALLOW YOURSELF TO BE GUIDED BY NATURE



The outfitters, members of Aventure Écotourisme Québec, in collaboration with the Sépaq, offer you several stays and guided activities specially conceived to have you discover exceptional natural spaces.

AEQ groups together more than one hundred producers in adventure tourism and in ecotourism that join forces to offer you high-quality products.

Consult the Association's website for planning your guided activities in Sépaq's national parks.



[www.quebecadventure.ca](http://www.quebecadventure.ca)



PARC NATIONAL  
DU MONT-MÉGANTIC



## LODGING PACKAGES

### » FROM THE EARTH TO THE STARS PACKAGES

- One or two nights in a participating lodging establishment.
- One or two breakfasts (in those establishments that offer the service).
- One evening of astronomy at the ASTROLab
- 10% off guided day tour of the ASTROLab and Observatory

### » FROM THE SNOW TO THE STARS PACKAGES

- One or two nights in a participating lodging establishment.
- One or two breakfasts (in those establishments that offer the service).
- 10% off:
  - the daily access to the crosscountry trails.
  - the access to the summit with the Park's vehicle.
  - an evening of astronomy at the ASTROLab.
  - the access to torched light walk.

**Informations: [parcsquebec.com](http://parcsquebec.com) and [astrolab.qc.ca](http://astrolab.qc.ca)**

## DISCOVER THE FONDS PARCS QUÉBEC COLLECTION AND DO YOUR PART FOR CONSERVATION!

**One dollar will be donated to Fonds Parcs Québec for each item purchased.**



Donations to Fonds Parcs Québec serve to support the conservation of Québec's national parks. Through the funding of research, knowledge acquisition, and species population monitoring and inventory, vital data are obtained to particularly safeguard plant and animal species.

The collection is available at the Boutique Nature shop.

**BOUTIQUE  
NATURE**  
Parcs Québec

**FONDS**  
Parcs Québec  
[fondsparcsquebec.com](http://fondsparcsquebec.com)



# THE PARK IN WINTER *FROM THE SNOW TO THE STARS*



## OBSERVATORY SECTOR

### Snowshoeing

The Parc National du Mont-Mégantic offers approximately 33 km of snowshoe trails for all tastes to help you discover the wonders of winter. Levels of difficulty range from beginner to intermediate, with circuits of 1 to 15 km, including access to three summits more than 1,000 m height : Mount St. Joseph, Mount Mégantic and Mount Victoria.

### Cross-country skiing

There are 28 km of classical cross-country ski trails at Parc National du Mont-Mégantic. The degree of difficulty along these groomed trails ranges from easy to intermediate, with circuits 2 to 7 hours in length. Ski trail rates available on the Internet and at the welcome centre.

#### SERVICES

- Ski, snowshoe and hiking crampons rental
- Luggage Transportation
- Restaurant open from 10:30 a.m. to 4:30 p.m., weekends only. Complete and varied menu. Dinner available during the Torchlight Packages, see page 15.



## FRANCEVILLE SECTOR

### Snowshoeing

The new sector of the park offers 11 km of snowshoeing trails. The Sentier des Cimes gives access to views onto the inside of the massif, revealing a magical landscape.

#### SERVICES

- Snowshoe and hiking crampons rental

### Snow conditions

The Parc National du Mont-Mégantic receives a huge amount of snow. Visit our Web site to find out current snow and trail conditions. Updated every morning!

- [www.parcquebec.com](http://www.parcquebec.com)



# CALENDAR OF WINTER ACTIVITIES

## WINTER ACTIVITIES

Starting December 2013

### TORCHLIGHT PACKAGE

To top off a memorable day of outdoor activities, enjoy:

- ▶ a healthy dinner
- ▶ a snowshoe outing by moonlight and torches
- ▶ An evening of stargazing at the ASTROLab.

#### Saturday nights of winter and during the school break.

- ▶ From January 18<sup>th</sup> to March 29<sup>th</sup>, 2014
- ▶ 5-6-7 of March, 2014
- ▶ From 5 p.m. to 11 p.m.

### SNOWY SPRING BREAK

Special activities all week long, among which observation of the Sun with a telescope, visit of the ASTROLab, and Torchlight Packages during the week !

- ▶ From March 1<sup>st</sup> to 9<sup>th</sup>, 2014

### FAMILY DAY

Special activities all day for the entire family ! Reserve early !

- ▶ Thursday, March 6<sup>th</sup>, 2014

### OFFER YOURSELF THE SUMMIT!

A driver will bring you up to the top of the mountain from where you'll be able to come down on snowshoes over a 5 km trail, or make your return to the base in the next vehicle going down. The landscape around the Astronomical Observatory on Mount Mégantic is simply out of this world!

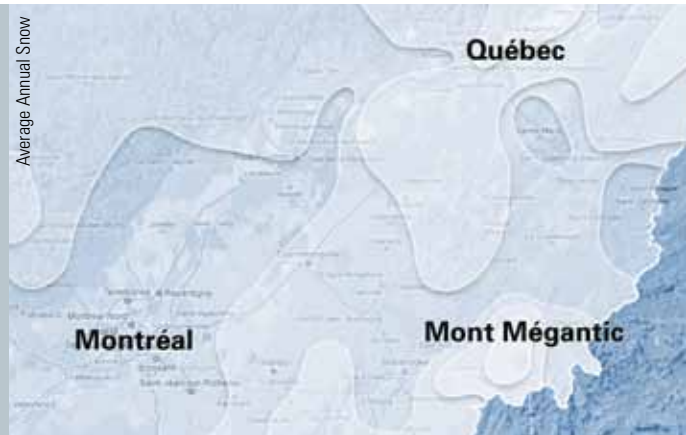
*Get all the details from the visitors centre.*



### DID YOU KNOW...

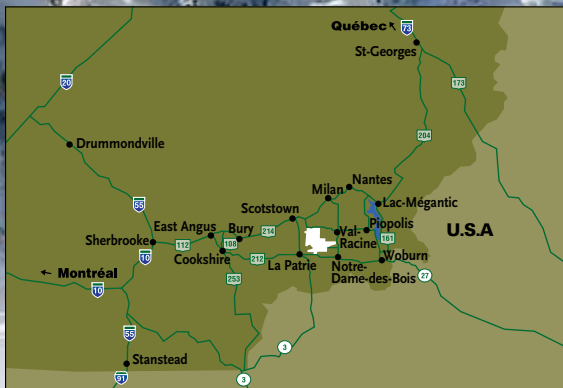
The Parc National du Mont-Mégantic is renowned for its exceptional quantity of snow. For comparison purposes, in an average winter, 3 m (10 ft.) of snow will fall over Sherbrooke, 5 m (16 ft.) at the foot of Mount Mégantic, and 7 m (23 ft.) at the top of the mountain!

On this map, we see that the Mont-Mégantic massif (slope) is the most snow covered in southern Quebec.





# PARC NATIONAL DU MONT-MÉGANTIC



### From Québec

- 78 173 St-Georges
- 204 Lac-Mégantic
- 161 Woburn
- 112 Notre-Dame-des-Bois

### From Montréal

- 10 Sherbrooke
- 112 East Angus
- 253 Cookshire
- 212 Notre-Dame-des-Bois

*From the Village of Notre-Dame-des-Bois, take the road to the Park.*

## ONLY 45 MINUTES FROM LAC-MÉGANTIC AND 55 MINUTES FROM SHERBROOKE.

Tourism  
EASTERN TOWNSHIPS



189, route du Parc, Notre-Dame-des-Bois (Québec) JOB 2E0  
 Telephone: 819 888-2941 ou 1 800 665-6527 (sans frais)  
 Fax: 819 888-2943  
 E-mail: [parc.mont-megantic@sepaq.com](mailto:parc.mont-megantic@sepaq.com)  
 Web sites: [www.parcquebec.com](http://www.parcquebec.com) • [www.astrolab.qc.ca](http://www.astrolab.qc.ca)



The information contained in this brochure was updated in March 2013. As planning for events and activities evolves throughout the year, we recommend you consult our information bulletin boards as well as our Web sites and ask for additional information upon arrival. La Société des établissements de plein air du Québec (Sépaq) oversees activities and services in Québec parks in compliance with the government's mission in terms of conservation and protection of natural environments.

## MAKE NATIONAL PARKS YOUR DESTINATION

### PARC NATIONAL DE FRONTENAC

Be a part of a guided outing on a rabaska canoe, and then follow the bicycle trail to enjoy a picnic on the edge of Grand lac Saint-François. 226 campsites, 20 ready-to-camp units and 9 cabins.

### PARC NATIONAL DU MONT-MÉGANTIC

At the heart of the first International Dark Sky Reserve! 47 campsites and 10 Huttopia tents at the Franceville Sector, astronomy evenings, guided tours of the ASTROLab and the Observatory and lodging package FROM THE EARTH TO THE STARS!

### PARC NATIONAL DU MONT-ORFORD

Enjoyment and discovery available year round! At the heart of the unique Memphremagog region lies a larger than life offer: Hiking, camping, boat rentals, Huttopia tents, Nature cabins, shelters, cross country skiing, snowshoeing ... Take your pick!

### PARC NATIONAL DE LA YAMASKA

Cycling, nature, and leisure await you less than 60 minutes from Montréal! Enjoy the proximity to the beautiful bike paths in the Granby area! 169 campsites, 24 Huttopia tents and 5 Nature cabins. In winter, snowshoeing and Nordic skiing may be just the thing for you!

Photos credit: Mr. Pitre, Mr. Dupuis and Mr. Loisel

parcsquebec.com 1 800 665-6527

## THE SUMMIT DRIVE.COM

# Mégantic Region

**SEPTEMBER 21**

**Summit Day 2013**

*Heights of discovery*

Photo: Marie-Claude Lacombe

This document has been printed entirely on recycled paper made in Québec, which contains 100% postconsumer fibres and is produced without chlorine. The inks used for this production contain vegetable oils.

