



BASED ON THE GILLER®PRIZE-WINNING BOOK

A SEGAL CENTRE FOR PERFORMING ARTS PRODUCTION OF



FIFTEEN DOGS

ADAPTED AND DIRECTED FOR THE STAGE BY MARIE FARSI

BASED ON THE NOVEL BY ANDRÉ ALEXIS

COMMISSIONED AND ORIGINALLY PRODUCED BY CROW'S THEATRE, TORONTO
ARTISTIC DIRECTOR, CHRIS ABRAHAM, EXECUTIVE DIRECTOR, SHERRIE JOHNSON

Mar 31
- Apr 21
2024

MONTRÉAL enSANTÉ

MAGAZINE

On est en ligne!

Santé, mise en forme, nutrition,
nouvelles et bien plus encore...
Parcourez tous les numéros de
Montréal enSanté à votre guise.

We're online!

Health, fitness,
nutrition, news and
more... Flip through
every issue of
Montréal enSanté
at your leisure.



montrealensante.com



Welcome back!

It feels like a lifetime since we last gathered beneath the comforting glow of the Segal Centre's stage lights. When the world outside feels unfamiliar and unrecognizable, the theatre remains a steadfast refuge where we can come together, contemplate, and perhaps find a moment of clarity and solace amidst the chaos. Such is the irreplaceable magic of live theatre.

In an era where we crave understanding and connection, *Fifteen Dogs* stands out as a poignant exploration of our human condition. Whether we're left pondering our flaws or celebrating our immense capacity for love, this play invites us to embrace both the beauty and the trials of our shared experience. This play is a tender reminder that, despite our imperfections, there is a profound beauty in our ability to connect, to empathize, and to extend compassion to one another.

Your presence here tonight is a testament to the resilient spirit of our community and the unifying power of the arts. If you are moved by the performances and designs you witness on our stage and wish to help us continue bringing such vital stories to life, please consider donating by scanning the QR code below. Every contribution, no matter the size, plays a crucial role in sustaining this enchanting space where imagination and reality intertwine.

Keep an eye out for the unveiling of our 2024-2025 season on April 18. I look forward to sharing what we have been hard at work on creating for you. (*Spoiler alert: get excited about a very music-filled season!*)

My heartfelt thanks for your ongoing support and presence.

Enjoy the show!

LISA RUBIN

Artistic and Executive Director

**SCAN HERE TO HELP THE
SEGAL CENTRE THRIVE!**



The Segal Centre is situated on the traditional territory of the Kanien'kehá:ka people. The land was also a diplomatic meeting place with other Iroquoian and Algonquians including Algonquin-Anishinaabe, Atikamekw, and Huron-Wendat. We acknowledge that we are located on a land that has been the site of human creativity and story-telling for thousands of years, and are thankful that we are able to create, collaborate, play, and work here. To learn more about this, visit segalcentre.org/en/land-acknowledgement

PROGRAM | WELLNESS

START
TODAY!

FITNESS PROGRAMS
DESIGNED FOR THE 50+
ALL LEVELS
514.343.3510

*Reap the
benefits*

-Annette Vézina



PROGRAMS.CUMMINGSCENTRE.ORG

Enjoy The Show!

SOLD

IMMEUBLES
PENNY LEVINE

*With compliments from
IMMEUBLES PENNY LEVINE
and one satisfied dog.*

THE SEGAL CENTRE FOR PERFORMING ARTS PRESENTS

FIFTEEN DOGS

ADAPTED AND DIRECTED FOR THE STAGE BY
BASED ON THE NOVEL BY

Marie Farsi
André Alexis

CAST

BENJY AND OTHERS	Lucinda Davis
MAJNOUN AND OTHERS	Oliver Dennis
PRINCE AND OTHERS	Davinder Malhi
ATTICUS AND OTHERS	David Reale
NIRA AND OTHERS	Amy Rutherford
HERMES AND OTHERS	Mirabella Sundar Singh

CREATIVE TEAM

ORIGINAL SET AND COSTUME DESIGNER	Julie Fox
ASSOCIATE COSTUME DESIGNER	Louise Bourret
ASSOCIATE SET DESIGNER	Bruno-Pierre Houle
ORIGINAL LIGHTING DESIGNER	Kimberly Purtell
ASSOCIATE LIGHTING DESIGNER	Imogen Wilson
MUSIC AND SOUND DESIGNER	David Mesiha
FIGHT DIRECTOR	Robert Montcalm
DRAMATURG, MONTREAL PRODUCTION	Caitlin Murphy
ASSOCIATE DIRECTOR	Gabriela Saltiel
CASTING	Rachelle Glait
STAGE MANAGER	Elaine Normandeau
ASSISTANT STAGE MANAGER	Mélanie Ermel
APPRENTICE STAGE MANAGER	Julia Carrier

COMMISSIONED AND ORIGINALLY PRODUCED BY **CROW'S THEATRE, TORONTO**

Artistic Director, **Chris Abraham** | Executive Director, **Sherrie Johnson**

THE RUNNING TIME IS 2 HOURS 15 MINUTES WITH A 15 MINUTE INTERMISSION

The Segal Theatre is a member of the Professional Association of Canadian Theatres and engages, under the terms of the Canadian Theatre Agreement, professional artists who are members of Canadian Actors' Equity Association. The videotaping or other video or audio recording of this production is strictly prohibited.



**por qué es de día, por qué vendrá la noche ...
– Pablo Neruda, “Oda al perro”**

For the epigraph to *Fifteen Dogs*, André Alexis quotes Pablo Neruda: “why is there day, why must night come ...” The line is from the poem “Ode to a Dog”; it’s about a dog who asks a man the unanswerable questions. The dog doesn’t speak, but still communicates his yearning to know and to understand the world to the man, without words, only through his two wet inquiring eyes. The man perceives the

intended meaning of his companion’s gaze. He translates, interprets a look that is reserved for him alone.

The act of translating is an effort to say the same thing differently, to transmit a thought or an experience in a new language or in a new way. Translation is at the heart of this new theatre adaptation of *Fifteen Dogs*, in both its content and its form. And as the god Hermes has taught me, translation reveals truth rather than corrupting it. My adaptation re-translates André’s beloved book into the world of theatre by drawing on the performance history of the epic poem. Rooted in an oral tradition, epic poems typically chronicle heroic journeys across supernatural worlds that took place in a time beyond the range of any living memory. Our story is set here, in Montreal, and through the eyes of fifteen miraculous dogs, our city is immortalized and mythicized.

So, it got me meditating on the weird magic of poetry, that must both guard and reveal the poet’s inner and outer observations of their world, the attempt to use words to convey what cannot be put into words. I tried to understand what poetry is and made a list: a wandering little drift of unidentified sounds; the exposure of a secret; an unvarying need to be heard; a fragment; not an extension of the self but a substitute for the self. All I really know now is that poems must inhabit the moment, must change the reality it watches carefully, must give pleasure. This one is epic and pays tribute to our ancient friendship with dogs who gift us the purest of loves.

MARIE FARSI
Adaptor and Director

40 YEARS OF
CROW'S

DANA H

WRITTEN BY LUCAS HNATH

ADAPTED FROM INTERVIEWS WITH DANA HIGGINBOTHAM

CONDUCTED BY STEVE COSSON

DIRECTED BY LES WATERS

MARCH 12 TO APRIL 7

“**BRILLIANT!**”

One of the richest, most complete works of theater to come along in many seasons.”

CRITIC'S PICK
THE NEW YORK TIMES

“**A HARROWING HOSTAGE STORY** is told with stunning subtlety in Broadway's *Dana H.*”

THE WASHINGTON POST

“**UNMISSABLE!**”

NEW YORK MAGAZINE



MOTEL

“Gut-twisting, breath-stealing! Jordan Baker offers one-of-a-kind virtuoso acting talents!”

SAN FRANCISCO CHRONICLE

ON STAGE IN TORONTO, ONTARIO
FACTORY THEATRE - 125 BATHURST STREET
BUY TICKETS: CROWSTHEATRE.COM/DANAH

JORDAN BAKER AS DANA HIGGINBOTHAM
PHOTO BY CALVIN NGU

FIFTEEN DOGS GLOSSARY

Apollo: In Greek mythology, Apollo is the god of sun and light, music, and prophecy, most notably. In literature, he's known for intervening with the fate of mortals (for instance, in Homer's *The Iliad*). His father is Zeus (see below).

Bitch: A female dog.

the Fates: In Greek mythology, the Fates are three sisters who control the destiny of humans. They each have a role: one spins the thread of destiny, one dispenses it, and one cuts it. Cutting the thread decides the moment of a human's death.

Hermes: In Greek mythology, the god Hermes is best known for his capacity as a messenger and as Apollo's counterpart. His father is Zeus (see below).

Lord Jim: A classic work of fiction about a British first mate on a ship, written by Joseph Conrad in 1900. Jim, along with the rest of the crew, abandon their ship full of passengers who are on their way to Mecca when the ship starts to sink. Jim later goes to court to face the consequences of his actions.

Mount Royal: A mountain and urban park in Montreal.

Pack Theory: Also known as dominance theory, this debunked concept is based on the idea that each pack of dogs has a leader or alpha who controls the group through dominance, using aggression and force on the other dogs. Experts now recognize that Pack Theory is flawed because it came from a study on wolves in captivity and doesn't apply to dogs.

The Golden Bowl: A novel about an art collector whose daughter buys him a gilded crystal bowl as a birthday present, revealing the affair her husband has been having with her best friend. The book was published in 1904 by Henry James.

Zeus: In Greek mythology, Zeus is the main god who rules and protects other gods. He is also known for controlling the skies and weather.

SIX ACTORS, *FIFTEEN DOGS*

While there are over 30 characters to represent, there are only six actors in this show! Using costumes and performance, the actors switch between various dogs, humans, and deities.

- **Athena:** A brown teacup poodle
- **Atticus:** A Neapolitan mastiff
- **Bella:** A great Dane
- **Benjy:** A beagle
- **Bobbie:** A duck toller
- **Dougie:** A schnauzer
- **Frick and Frack:** A pair of Labrador retrievers
- **Majnoun:** A black poodle
- **Max and Prince:** Both mutts
- **Rosie:** A German shepherd



Athena



Atticus



Bella



Benjy



Bobbie



Dougie



Frick and Frack



Majnoun



Max and Prince



Rosie



LUCINDA DAVIS
Benji and others

Segal *Top Girls, The Angel and the Sparrow* (now titled *Piaf/Dietrich*)
Elsewhere

Redbone Coonhound (Tarragon Theatre and Imago Theatre), *Adventures of a Black Girl in Search of God* (Obsidian Theatre), *random* (Imago Theatre), *Harlem Duet* (Black Theatre Workshop) **Awards** META for Supporting Performance (2023), Prix Rideau Award for Outstanding Female Performance (2018), META for Outstanding Lead Performance (2015), META for Outstanding Female Actor, ACTRA Montreal Woman of The Year (2017) **Et cetera** To my darling Peter for your constant love and support amidst the chaos.



OLIVER DENNIS
Majnoun and others

Segal *A Streetcar Named Desire, The Importance of Being Ernest*

Elsewhere *Bremen Town* (Next Stage Festival), *The Wonderful* (Caravan Farm Theatre); close to 100 productions with Soulpepper Theatre including pieces from Shakespeare, Molière, Chekhov, Miller, Williams, Albee, Beckett, Ionesco, Orton, Simon, Sarah Ruhl, Suzan-Lori Parks, Tracey Letts, David French, Morris Panych/Brenda Robins, Mike Ross/Sarah Wilson, Lee MacDougall, Vern Thiessen, Michael Shamata, Shaffer, Story, Stoppard, Frayn, Aykourn, and more. Work at other theatres, including Theatre New Brunswick, Grand Theatre London, CanStage, Factory, Tarragon, Passe Muraille, Crow's Theatre, Theatre Columbus **Film/TV** *Murdoch Mysteries*

(with his real-life daughter, Charlotte), *Don't Get Killed in Alaska, American Hangman, Slings and Arrows.*

Experience 40 years.



DAVINDER MALHI
Prince and others

Segal *Debut Elsewhere*
Casey and Diana

(Soulpepper and Stratford Festival); *No Big Deal* (Roseneath Theatre); *rihannaboi95* (Young People's Theatre); *Concord Floral* (Canadian Stage) **Film/TV** *Fellow Travellers* (Showtime) **Training** BFA from York University **Online** @davinder.pdf on Instagram **Et cetera** Forever grateful to my wonderful family and friends, and the team at 10 Talent.



DAVID REALE
Atticus and others

Segal *My Name Is Asher Lev* (as Asher/ co-production with RMTc)
Elsewhere *John*

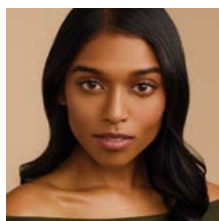
as Elias (RMTc); *Hamlet* as Laertes, *A Midsummer Night's Dream* as Puck, *Romeo and Juliet* as Romeo (Classical Theatre Project); *The Great Gatsby* as Nick (LOT); *Claire, From The Bus* as Donald; *P.V.T. Wars* as Silvio (The Storefront Theatre); *Ghost Stories* as Simon Rifkind (Mirvish); *Stag and Doe* as Jay (Theatre Orangeville) **Film/TV** *Close to You* (premiering at TIFF), *The Boys* (Amazon), *Titans* (HBO/Netflix), *Murdoch Mysteries* (CBC), *American Gods* (Starz), *Suits* (USA)



AMY RUTHERFORD
Nira and others

Segal Debut
Elsewhere *Liars at a Funeral* (Blyth Festival); *An Undeveloped Sound* (Electric

Company Theatre); *Public Enemy* (Canadian Stage); *A Streetcar Named Desire* (Soulpepper Theatre) for which she won a Toronto Theatre Critics' Award **Film/TV** *Kim's Convenience* (CBC), *Killjoys* (Syfy), *Remedy* (Global) **Training/ Experience** A graduate of The National Theatre School of Canada and Stratford Birmingham Conservatory. Amy is also a playwright. Her play, *Mortified* (Studio 58, Touchstone Theatre) won The Playwright's Guild of Canada's Carol Bolt Award for Best New Play of 2018.

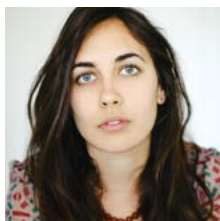


MIRABELLA SUNDAR SINGH
Hermes and others

Segal Debut
Elsewhere *Fifteen Dogs* (premiere, Crow's Theatre),

Armadillos (Factory Theatre); *NEW* (Canadian Stage Company, RMTCC); *Mamma Mia!* (Drayton Entertainment) **Film/TV** *Life with Luca* (Shaftesbury Films - Stunt Molly); *Brothers in the Kitchen* (Hot Docs Film Festival); *The Next Step* (Seasons 1 & 2 - Bharathanatyam Dancer) **Recordings** *Sisters* ("You Can't Get There From Here", Factory Theatre) **Training/ Experience** University of Toronto (BA), Sheridan College (Bachelor of Music Theatre) **Online** @mirabella_lydia **Et cetera** Versatile training background including over 20 years of Bharathanatyam dance, jazz, tap, hip hop, ballet, classical piano (RCM), classical vocal training (western and Carnatic), musical theatre (performance and writing). Deeply thankful for the

opportunities; my sincere appreciation to all.



MARIE FARSI
Adaptor and Director

Segal Debut
Elsewhere *Providencia* (Aux Écuries); *Ghost Quartet*, *Fifteen Dogs*

(Crow's); *I, Claudia* (Arts Club); *The Huns* (One Four One Collective); *Surveil*; *Home* (Hip. Bang!); *Ceci est une histoire d'amour* and *Crème-Glacée* (La Seizième); several original creations with her indie company Babelle Theatre in Vancouver; *The 4th Graders Present An Unnamed Love-Suicide* (Rumble Theatre) **Training** Concordia University; Michael Langham Workshop (Stratford Festival) **Awards** 2020 Dora Award for Outstanding Direction in the Musical Theatre division and Toronto Theatre Critics' Award for Best Director of a Musical (*Ghost Quartet*); Ray Michal Award for Outstanding Body of Work by an Emerging Director; Patron's Pick and Best of Fringe Awards at the Toronto Fringe 2019 (*The Huns*); Artistic Risk Award at the Vancouver Fringe 2018 (*Surveil*). **Online** mariefarsi.com



JULIE FOX
Original Set, Props, Costume Designer

Segal *Geometry in Venice*, *We Are Not Alone* **Elsewhere** 14 seasons

at the Stratford Festival; *Uncle Vanya*, *Great Comet*, *Red Velvet*, *Wedding Party*, *Watershed*, *Seagull*, *Someone Else*, *Seeds*, *I, Claudia* (Crow's Theatre); *Public Enemy*, *Cosmonaut* (Canadian Stage); *Cyrano* (Shaw Festival); *Arigato*, *The Maids*, *Blasted* (Buddies in Bad Times); *Faust*, *The Designated Mourner*, *Cryptogram* (Tarragon); Centaur,

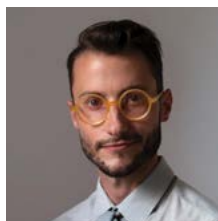
Electric Company, Why Not Theatre, Soulpepper, Necessary Angel, Theatre Passe Muraille, MTC, Citadel **Training** National Theatre School **Awards** Five Dora Awards for set design; Virginia Cooper Award for costume design; META and Sterling Award nominations.



LOUISE BOURRET
Associate Costume Designer

Segal
Beautiful: The Carole King Musical;

Josephine: A Musical Cabaret; Prayer for the French Republic; Dracula, A Comedy of Terrors; SuperDogs: The Musical; I Love You, You're Perfect, Now Change; Tribes; My Name Is Asher Lev; Noises Off; Million Dollar Quartet; Marjorie Prime; The Angel and the Sparrow (now titled Piaf/Dietrich); A Doll's House, Part 2; Indecent; Mythic; The Times They Are A Changin'; April Fools; Co-Costume Designer for The Hockey Sweater: A Musical. DWYT: Soul Doctor: Journey of a Rock Star Rabbi; The Dybbuk; The Producers; It Shoulda Been You; A Century Songbook
Elsewhere Cirque du Soleil, Cirque Éloize, Festival des FrancoFolies de Montréal, the Montreal Jazz Festival, Légendes Fantastiques, Cavalia; *Era: Intersection of Time* (Shanghai); *Daughters of Mile End, Infinity Ball* (Lune Rouge Entertainment); *Piaf/Dietrich* (Mirvish), *Vroom, Village Québécois d'Antan* (Moment Factory)
Awards META winner for Outstanding Costume Design for *Travesties*



BRUNO-PIERRE HOULE
Associate Set Designer

Segal *Small Mouth Sounds; SuperDogs: The Musical; Josephine:*

A Musical Cabaret **Elsewhere** *Extra/ Beautiful/U; Dominoes at the Crossroads* (Infinithatre); *Selfie* (Geordie); *Le Loup* (Duceppe); *Proje(c)t; Les Bonnes* (Third Space Theatre); *Chattermarks* (Cabal); *You/ Emma* (Wandering Bark Theatre Co.); *Title Loading* (Fusebox Festival); *Die Zauberflöte* (Butler Opera Center); *Fit* (Notch Theatre Co.) **Film** *Pas d'chicane dans ma cabane* (Forum Films); *Sarah préfère la course* (La boîte à Fanny inc.); *My Name Is Sandy* (Iammatteo Pictures) **Other** *Petite Plage Concert* (Ingrid St-Pierre at Théâtre Outremont); *Unravelling* (Never Apart), and multiple escape games. **Awards** META for Outstanding Set Design for *Small Mouth Sounds*

Online www.bphoule.com



KIMBERLY PURTELL
Original Lighting Designer

Segal *We Are Not Alone*
Elsewhere *The Master Plan, Fifteen Dogs,*

Uncle Vanya, We Are Not Alone, The Wedding Party, A&R Angels, The Boy In The Moon, Someone Else, The Seagull (Crow's); *Caroline, or Change* (2020), *Life After, The Wild Party, Falsettos, Do You Want What I Have Got?, A Craigslist Cantata, Caroline, or Change* (2012) (Musical Stage Company); *Wildwoman* (Soulpepper); *Withrow Park* (Tarragon Theatre); *Frankenstein Revived, A Wrinkle In Time* (Stratford Festival); *Maggie* (Theatre Aquarius &

Charlottetown Festival), *Don Giovanni* (National Arts Centre Orchestra); *Da Kink In My Hair*, *Queen Goneril*, *King Lear* (Soulpepper); *Pomegranate* (Canadian Opera Company); *Elf* (The Grand Theatre); *On the Razzle* (Shaw Festival). She has also designed for Canadian Stage, Soulpepper, The Citadel, Theatre Calgary, Arts Club, Vancouver Opera, Pacific Opera, Edmonton Opera, Opera Atelier, Mirvish Productions, Studio 180, National Arts Centre, Royal Manitoba Theatre Centre, Arena Stage DC, Opera Philadelphia, Necessary Angel among others. **Awards** Recipient of three Dora Awards, Pauline McGibbon Award, Sterling Award, Montreal English Theatre Award, Toronto Theatre Critics' Award, Ottawa Critics' Circle Award.



IMOGEN WILSON
Associate
Lighting Designer

Segal Debut Elsewhere Imogen has had the pleasure of working with Mirvish

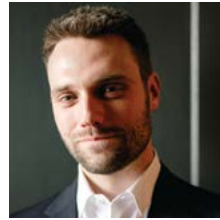
Productions, The Canadian Opera Company, Stratford Festival, Crow's Theatre, TerraBruce Productions, Against the Grain, Soulpepper, Chemainus Festival, YES Theatre, Canadian Stage, Canadian Contemporary Dance Theatre, ProArteDanza, and Thought for Food. Recent design credits include *Ghost: The Musical* (Chemainus Festival Theatre), *How to Fail as a Popstar* (Canadian Stage, world tour) **Et cetera** Imogen is a proud member of ADC659 and loves to canoe at sunset.



DAVID MESIHA
Music and Sound
Designer

Segal Debut Elsewhere *Fifteen Dogs* (Crow's

Theatre); *Same Difference* (Theatre Conspiracy); *asses.masses* (with Milton Lim, Patrick Blenkarn and Laurel Green); *You Should Have Stayed Home* - Live + VR Performance (Spiderwebshow); *Foreign Radical* (Theatre Conspiracy); *Loss* (Ian Kamau and Theatre Centre) **Film & TV** *+40*, *Spirit Glitch*, *The Mission*, *Toward You*, *The Deluge*, *Suddenly Slaughter*, *DeClutt-ers* **Online** @soniccanvas, www.davidmesiha.com, www.conspiracy.ca



ROBERT MONTCALM
Fight Director

Segal *What's in a Name?*, *Bad Jews* **Elsewhere** *All I Want for Christmas*, *MOB* (Centaur);

Moonlight and Magnolias (Theatre Lac Brome); *Metropolitan Operas*, *Love and Human Remains* (Witchboy Theatre); *Twelfth Night* (Repercussion); *Sal Capone: The Lamentable Tragedy of* (Urban Ink/BTW); *Robin Hood* (Geordie) **Training/Experience** Over a decade of experience as a stunt performer and certified fight instructor with Fight Directors Canada. He has worked on over 50 video games in the last decade. **Et cetera** Thank you Jean-François Gagnon for the years of invaluable training!



CAITLIN MURPHY
Dramaturg,
Montreal
Production

Segal *Small Mouth Sounds*, *A Doll's House, Part 2* (Director),

Marjorie Prime (Associate Director), *Noises Off*, *Million Dollar Quartet*, *Bad Jews*, *Inherit the Wind* (Assistant Director), *Top Girls* (Production Dramaturg), Artistic Associate (3 seasons), Dramaturg-in-Residence (3

seasons) **Elsewhere** *Extra / Beautiful / U* (Infinithéâtre, Dramaturg and Director) **Online** *Mothers Try* (Creator, Performer) motherstry.ca **Awards** META Outstanding Direction, *Small Mouth Sounds*, 2019; QWF Ian Ferrier Spoken Word Prize, 2023 **Et cetera** upcoming podcast *You May Be Feeling*.



GABRIELA SALTIEL
Associate Director

Segal *Prayer for the French Republic* (Assistant to the Director),

Artistic & Executive Associate **Elsewhere** 13 years' experience stage managing across Quebec and Ontario. Producer, educator, activist and theatre administrator **Et cetera** Proud alumnus of the Black Theatre Workshop Artist Mentorship Program and Cofounder of the Acting in Good Company grassroots collective. Gabriela's love of theatre has always stemmed from the belief that art and storytelling are two of the most powerful vehicles for change as well as an important tool in the path to healing.



RACHELLE GLAIT
Casting

Segal Casting for over two decades, Director for Dora Wasserman

Yiddish Theatre shows **Elsewhere** Director for JPL Hebrew Theatre, *Daughters of Mile End* (D.B. Clarke Theatre) **Film/TV** Acting for the small screen, voices for animated films **Et cetera** When she is not casting plays at the Segal, Rachelle keeps busy on both sides of the footlights. As director of the Geordie Theatre School,

she mentored young actors, several of whom went on to have careers in film and TV. Rachelle has brought her eye for discovering talent to the Segal where she has worked with many wonderful directors.



ELAINE NORMANDEAU
Stage Manager

Segal *Dracula, A Comedy of Terrors; The Angel and the Sparrow* (now titled

Piaf/Dietrich; Underneath the Lintel; Top Girls; Waiting for the Barbarians; Dangerous Liaisons; Amadeus; Harvey; View from the Bridge; My Old Lady; Old Wicked Songs; Vigil Elsewhere *Qaumma, Aleppo Portrait of an Absence, La plus secrète mémoire des hommes* (FTA); *Embrasse, En attendant Godot* (TNM); *Héritage* (Duceppe); *Le Wild West Show de Gabriel Dumont* (NAC and various); *Intérieur, Le misanthrope* (Rideau Vert) **Opera** *Der fliegende Holländer* (Festival d'opéra de Québec); *Siegfried* (COC) **Film/TV** *Hochelaga, Land of Souls* directed by François Girard (Language Coordinator). **Other** Translator/Surtitles: *In My Body, M'appelle Mohamed Ali* (FTA); *Redbone Coonhound, The Flood* (Imago); *Cyclorama, Paradise Lost* (Centaur); 6 seasons at La Chapelle.



MÉLANIE ERMEL
Assistant Stage Manager

Segal *Prayer for the French Republic* (dir. Lisa Rubin); *Dracula, A Comedy of*

Terrors (ASM, dir. Gordon Greenberg); *Lies My Father Told Me* (dir. Bryna Wasserman); *Red* (dir. Martha Henry); *Equus* (dir. Domy Reiter-Soffer); *I Love*

You, You're Perfect, Now Change (dir. Wade Lynch); *Vigil* (Co-production with Théâtre du Rideau Vert, dir. Martin Faucher); *Scientific American* (dir. Andrew Shaver) and many DWYT shows
Elsewhere *alterNatives* (ASM, Centaur); Geordie Theatre, Teesri Duniya, Youth Theatre, Theatre Lac Brome and l'Université de Montréal
Training/ Experience I am also a trained dancer and dance teacher. In a very different range of skills, I can do everything around a pool. It is very important for me to love what I do and to keep a young soul.



JULIA CARRIER
**Apprentice Stage
Manager**

Segal Beautiful:
*The Carole King
Musical*
Elsewhere

Ointments: The Musical (Côte Saint-Luc Dramatic Society) **Training/Experience** John Abbott College, Design Stream – *A Midsummer Night's Dream* (2023, Set Design), *Once Upon a Mattress* (2023, Head of Wardrobe), *Goodnight Desdemona; Good Morning Juliet* (2022, Head Lx), *Eurydice* (2022, Head of Wardrobe) **Online** @zomag.arts
Et Cetera I am thrilled to be working on *Fifteen Dogs* as my first big experience out of school! Thank you all for this opportunity!



SEGAL CENTRE

SAISON THÉÂTRALE 2024-25 THEATRE SEASON

JOIN US FOR OUR MOST **SPLASHY** SEASON LAUNCH YET!

THURSDAY, APRIL 18, 2024, 5 @ 7

SEGAL CENTRE LOBBY

infinithéâtre
PRESENTS

OPEN HOUSE



APRIL 18-28TH
2024

2000 NOTRE-DAME ST. EAST, MTL

A NEW PLAY BY DREW HAYDEN TAYLOR
DIRECTED BY DIAN MARIE BRIDGE

INFINITHEATRE.COM

MCLL

McGill Community for Lifelong Learning

*Join our peer learning
center for seniors!*

Spring registration
opens on April 2nd

mcgill.ca/mccll



McGill

School of
Continuing Studies

École
d'éducation permanente

BOARD OF DIRECTORS

Sylvi Plante - President, Elliot Lifson O.C. - Immediate Past President,
 Howard Stotland - Vice President, Moe Liebman - Secretary, Brandon Gerstein - Treasurer,
 Aliénor Armand-Linot, Myer Bick, Maia Cooper, Ellen David, Rabbi Lisa Grushcow,
 Lindsay Holmgren, Ranelee Lee, Michel Ohayon, Shawn Rozansky, Emmelle Segal

LEADERSHIP COUNCIL

Joel Segal, Barbara Seal C.M., Robert Kleinman,
 Kathy Assayag, Adam Barza, Françoise Bertrand, O.C., O.Q., Irwin Cotler, P.C., O.C., Joel King,
 Tony Loffreda, Monette Malewski, Andy Nulman, Jesse Prupas, Allan Quallenberg, William Rosenberg,
 Michael Rubinoff, Allan Sandler, Jeff Segel, Gail Small, Jacob Tierney

ARTISTIC AND EXECUTIVE DIRECTOR

Lisa Rubin

GENERAL MANAGER

Jon Rondeau

ADMINISTRATION

DIRECTOR, FINANCE & OPERATIONS
 FINANCE & OPERATIONS
 ARTISTIC & EXECUTIVE ASSOCIATE
 JEWISH PROGRAMS MANAGER
 PRODUCTION ACCOUNTANT
 FACILITIES MANAGER
 HEAD OF MAINTENANCE
 OFFICE COORDINATOR

Barry Taggart
 Brian Karanofsky
 Gabriela Saltiel
 Sivan Slapak
 Jez Yung
 Jacques-Olivier Dupuis
 Louis Fredette
 Jacqueline Mirador

COMMUNICATIONS

HEAD OF COMMUNICATIONS
 HEAD OF MARKETING
 MARKETING & DESIGN SPECIALIST
 HEAD OF BOX OFFICE AND SALES
 SALES, MARKETING, &
 COMMUNICATIONS SPECIALISTS
 SOCIAL MEDIA MANAGER
 OUTREACH & SALES SPECIALIST
 ASSISTANT BOX OFFICE MANAGER
 BOX OFFICE & SALES ASSOCIATE
 SALES & CUSTOMER SERVICE ASSOCIATES
 FRONT OF HOUSE MANAGER
 HOSPITALITY COORDINATOR

Mélanie Thompson
 Laurie Bourgeois
 Julie Nyst
 Jean-Marc LeBlanc
 Liora Friedland, Charlie Morin

Casey Marie Ecker
 Carrie Mazoff
 Steve Côté
 Jess Fildes
 James Beaver, Adam Capriolo, Amanda Silveira
 Angela J. Murphy
 Mahin Sekendra

ACADEMY

DIRECTOR OF THE ACADEMY

Liana Wiener

DEVELOPMENT

DIRECTOR OF DEVELOPMENT
 DEVELOPMENT OFFICER

Alexandra Yanofsky
 Stephanie McKenna

PRODUCTION & PRESENTATION

DIRECTOR OF PRODUCTION	Marc Laliberté
TECHNICAL DIRECTOR	Sylvin Sévigny
TECHNICAL DIRECTOR, PRODUCTION	François Lemieux
ASSOCIATE PRODUCTION MANAGER	Mike Carvalho
ASSOCIATE PRODUCER	Kasia Leskiewicz
ASSOCIATE PRODUCER	Paul Brian Imperial
ASSOCIATE PRODUCER, CONTRACTS & SPECIAL PROJECTS	Sean Sandler
COMPANY MANAGER & RENTALS COORDINATOR	Stephen Maclean Rogers
HEAD TECHNICIAN, THEATRE & HEAD OF LIGHTING	Chris Wardell
ASSOCIATE HEAD TECHNICIANS & HEAD OF LIGHTING	Miles Keily-Baxter, Caroline Nowacki
HEAD TECHNICIAN, STUDIO	Natalie Demmon
HEAD OF SOUND	Evan Brown
HEAD CARPENTER	Stephen Schön
ASSOCIATE HEAD CARPENTER	Joseph Baron
ASSOCIATE CARPENTER, WELDER	Yesha West
HEAD SCENIC PAINTER	William Patrick
HEAD OF PROPS	Fruzsina Lanyi
HEAD OF WARDROBE	Louise Bourret
HEAD DRESSER	Rachel Quintero Faia
WIGS	Perruques & Co., Sarah Tremblay
HAIR STYLIST	Mario Gilbert, Stephanie Odia
MAKEUP STYLIST	Suzanne Trépanier
COSTUME WORKSHOP AND ALTERATIONS	Lise Des Rosiers, Marcel Roman
WARDROBE COORDINATOR	Elisabeth de Medeiros
FIGHT CAPTAIN	Mirabella Sundar Singh

SET-UP AND STRIKE CREW

Charlotte Baker, Gordon Barnett, Jeremy Barrs, Elsa di Paola, Scarlet Fountain, Miles Keily-Baxter, Nadine Louis, Pedro Melao Ferreira, Alycia O'Keefe, Corbeau Sandoval, Catherine Sargent, Mahin Sekendra, Hayley Verbonac, Adam Walters, Zach Weibel

HOUSE DOCTORS

Dr. Beth-Ann Cummings, Dr. Mark Karanofsky, Dr. Michel Samra & Dr. Jonathan Young

SPECIAL THANKS

Raphaël Brien inc, Showtex

APRIL 23 – MAY 12CENTAUR THEATRE IN PARTNERSHIP WITH
REPERCUSSION AND TABLEAU D'HÔTE PRESENTS

THY WOMAN'S WEEDS

"Frailty,
thy name
is man."
–Ophelia

Written by
Erin Shields

Directed by
Amanda Kellock



Pictured: 1st row: Espoir Segbeaya, Felicia Shulman, Julie Tamiko Manning,
Warona Setshwaelo. 2nd row: Deena Aziz, Leni Parker, Joy Ross-Jones



Developed in collaboration with

PWM
Playwrights' Workshop Montréal

centaurtheatre.com
514-288-3161

CROW'S BOARD OF DIRECTORS

Prakash Amarasooriya, Shelby Austin, Elly Barlin-Daniels, Josef Bornbaum, John Brodhead, Layth Gafoor, Gabe Gonda, Heather Jessiman, John F. Kissoon, Anne Maggisano, Gurbani Marwah, Seaton McLean, Max Meighen, Jonathan Nehmetallah, Margaret Nelligan (Board Chair), Michael Paris, Wendy Pitblado, Greg Reed (Treasurer), Nancy Tremblay (Secretary), Nancy Lockhart (Chair Emerita)

CROW'S STAFF & BOARD

ARTISTIC DIRECTOR	Chris Abraham
EXECUTIVE DIRECTOR	Sherrie Johnson
ASSOCIATE ARTISTIC DIRECTOR	Paolo Santalucia
ASSISTANT TO THE ARTISTIC DIRECTOR	Christopher Manousos
GENERAL MANAGER	Katie Pounder
SENIOR PRODUCER	Heather Landon
PRODUCER	Beth Wong
DIRECTOR OF PRODUCTION AND FACILITIES	LJ Savage
PRODUCTION MANAGER	Jeremy Hutton
TECHNICAL DIRECTOR	Ryan Borshuk
ASSISTANT TECHNICAL DIRECTOR	Amber Rea
HOUSE TECHNICIANS	Jay Hines, Sergey Kublanovskiy, Zach White
DIRECTOR OF MARKETING & COMMUNICATIONS	Carrie Sager
SENIOR MARKETING MANAGER	Ryan Hildebrandt
GRAPHIC DESIGNER	Jacob Whibley
DIRECTOR OF PHILANTHROPY	Laura Langlois
SENIOR MANAGER OF PHILANTHROPY	Nazli Nahidi
PHILANTHROPY ASSOCIATE	Alex Pompilii
FINANCE MANAGER	Walter Ho
ACCOUNTANT	Claudia Padilha
MANAGER OF TICKETING AND VENUE SERVICES	Jordaan Mason
BOX OFFICE & FRONT OF HOUSE SUPERVISORS	Miranda Wiseman, Sabrina Weinstein
BOX OFFICE & FRONT OF HOUSE SWING SUPERVISORS	Rebecca Bauer, Bonnie Duff,
BOX OFFICE REPRESENTATIVES	Gabriella (Gabbi) Kosmidis
	Rebecca Bauer, Tianna Dang, Bonnie Duff,
	Elyssa Hsu, Madeline Kennedy, Nadine Skinner,
	Gabriella (Gabbi) Kosmidis, Theodore Zachariah
	Ted Hallett
BAR MANAGER	Siobhan Gallagher, Max Mohenu, Navtej Sandhu
BARTENDERS	

THANK YOU! The Segal Centre for Performing Arts gratefully acknowledges the generosity of the individuals, corporations and foundations whose important annual donations make it possible for the Segal Centre to serve the community with life-enriching productions and educational programs, including our children's and youth programs at our Segal Academy.

\$100,000 +

Sylvan Adams Family Foundation
The Azrieli Foundation
Alvin Segal Family Foundation

\$50,000 - \$99,999

The Louise & Alan Edwards
Foundation
The Molson Foundation

\$25,000 - \$49,999

Delmar International Inc.
Groupe Financier Banque TD
HSBC Bank Canada
Power Corporation
The Richter Charitable
Foundation

\$10,000 - \$24,999

Allan Schouela
Felicia and Arnold Aaron
Foundation
Banque Nationale
Blackstone
BMO Banque de Montréal
Douglas & Joanne Cohen
Cole Foundation
Dalfen Family Foundation
Davies Ward Phillips & Vineberg
Alexander Dworkin Consult Fund
Hangerlogic
HarbourVest
Itochu Prominent USA LLC
JCF McGill SAF Fund
Marlene & Joel King
Motives International Limited
Nina Hart z"l
Rossy Family Foundation
Jeff Segel
Vivian & Howard Stotland
The Jonathan and Susan Wener
Family Foundation

\$5,000 - \$9,999

A&R Belyel Inc.
Liebman Legal Inc.
Sylvy Plante & Neil Wiener
PSB Boisjoli
RBC Foundation
Barbara Seal, C.M.
Lori & Ken Webber
Bill Molson
Turtle Creek Asset
Management Inc.

\$2,500 - \$4,999

Brian Bronfman Family
Foundation
Moe Liebman
The Dundi & Lyon Sachs
Family Foundation

\$1,000 - \$2,499

Carole & Myer Bick
Rozlyn & Daphne Druckman
Elaine & Rick Dubrovsky
Roy Eappen
In Memory of Shir Georgy &
Tiferet Lapidot
The Janie & Michael Etinson
Fund
Laurent Ferreira & Leslie Silver
Rosa & David Finestone Fund
Chiara Fish
Wally Fish
Gewurz Family Foundation
Liat & Dan Goldstein
Paoletti Gracioppo Therrien
Leigh Harris Investments
Robert Kleinman & Alice
Herscovitch Fund
Harriet & Jack Lazare
Lester Asset Management
Adina Lewittes
Elliot Lifson
Earl Luger
The Maurice Pollack Foundation
Alice & Joel Raby
Dorothy Reitman
Perry Shak
Manya & David Stendel
Family Foundation
Michael Tevel & Barbara Buch
Family Foundation
Warren Ribkoff, Weave-
Tex
Fabrics
Lorne Wiseman

\$500 - \$999
Robert Abrams
Jack Bick
Sharon & Michael Blumenstein
Bratin Family Fund
Bernice Brownstein
Cheryl Brownstein
Rucsandra Calin
Sharon Cape
Nina Cherney & Rob Doyle
Marvin Corber
Elizabeth Dalfen
Phyllis Deitcher
Kathleen Dunn
Andrea Freedman
Anita & Rony Gabbay Family
Fund
Brenda Gewurz
Arlene Greenberg
Janice Greenberg
Linda Greenberg
The Henriens Crelinsten Family
Ann & Mel Hodes
Horizons Efts Management

(Canada) Inc.
The Sue Carol Isaacson Fund
Lara Lazare
Helen Levy
Andrea Lipper
Irene Lipper
Irving & Frima Ludmer
David & Sandy Martz
Trudi Oberfield
Eunice Prosterman
Alissa Rappaport
Ch Robinson
Valeria & Mike Rosenbloom
Leiba & Anthony Rustin
In Honour of Emmelle Segal
Gary Shapiro
Shaymar Holdings Inc.
Peter Small
Tina & Max Smart
Janice Steinberg
Barry Steinberg
The Mireille & Murray Steinberg
Family Foundation
Barbara & Edward Victor
Stephen and Lillian Vineberg
Family Foundation
Sylvia & Lou Vogel
Foundation For Yiddish Culture

\$250 - \$499

Anonymous
Liliane Aberman
Hela & Jeffrey Boro
The Donna & Benjamin Burko
Family Foundation
Dr. Ernest & Caroline Burman
Rhoda Chankowsky
Ronda Fisher
Debbie Giser
Carrie Goldstein Mazoff
Sheila & Harvey Gradinger
In Honour of Lisa Rubin &
Sylvy Plante - Rabbi Lisa
Grushcow & Shelley Grushcow
Barry Gurman
Lana Harper
Guita Hyman
Michal Katz & Adam Atlas
Claude & Marion Lautman
Celina Segal & Barry Lazar
Angela & Ralph Lipper
Sheila & Irving Maklan
Endowment Fund
Sandra Mintz
Phil Nadler
Mr. & Mrs. L. Newman
Aviva & Morty Ptack
Family Foundation
Maureen & David Rabin
Raymond James Canada
Foundation

Robert & Sandie Rondeau
Barbara & Melvin Schloss
Foundation
Lois & Dr. Bernard Shapiro
Mayme & Richard Vineberg

\$75 - \$249

Anonymous (2)
Alice Abracen
John Anderson
Carol Baxendine
Susan Bercovitch
Susan Berger
Jack A. Bick
Jane Bishop Schissler
Richard Black
Bluma & Brian Blicher
Marianne Boesch
Richard Bolton
Julie Bourbeau
Freda & Irwin Browns z'l
Marlene Brownstein Fund
Mary Burke
Canadian Online Giving
Foundation
- Benevity
Heidi Chernofsky
Anthony Clemen
Robert Cloutier
Donna & Stephen Cooper
Maia Cooper Endowment Fund
Eva Crawford
Pamela Crossen-Milz
Anthony Czaharyn
Louise Dorais
Marlene & Jack Dworkin
Cherie Edelstein
Monica & Leon Ejdelman
Simon Finkelstein
Gerald and Karen Fried
Family Foundation
Ruth Huber Gesser
Elaine Gilman
Leon Glass
Dr. Muriel Gold C.M
Dr. Barry Goldberg & Dr. Ann
Berman
Fryda Goldfinger
Tania Goldin
Marilyn Goffman
Ilse Hellemans-Sullivan
Calvin Kalman
Kathleen Kennedy Quinlan
Lissy & Earl Kimmel
Ruth & Peter Kovac
Donna Kuzmarov and the Late
Ann Weinstein
Marc Lalonde
Naomi Lapin & Jeffrey Rother
Gordon Lax Family Foundation
Susan Laxer & Alain Matarasso

& Family Fund
Levine Family Fund - on Behalf
of Carol Levine, Pam & Gordie
Levine, Candi & Mark Levine
Anne Levitsky
Marion Levitt
Jewel & Paul Lowenstein
Robert Lubarsky
Katherine Mayhew
Gary McCarragher
Leonard Miller
Mary C. Moffat
Marilyn & Paul Nayer
Michel Ohayon
Peter Payan
Julia Pompura
Robert Quilliams
Sylvia Quint
Stephen Rapps
Sarah Reingewirtz
Mr. & Mrs. Steven Rochefort
Soryl Rosenberg
Mary Ross
Anthony E. Rubin
In Honour of Lisa Rubin
Miriam Schuster
Philip & Sandy Shea
Read Sherman
Eden Isabelle Sitbon
Gail Small
Sylvie St Louis Spivack
Renate Sutherland
Barry Taggart

Joyce Takefman
Marilyn Takefman
Zivojin V. Tanich
Stephanie Titcombe
Marianne Vandenbosch
Trudy Weinstein

The Segal Centre is profoundly grateful for the generosity of Our Red Carpet Circle:

Anonymous
Eric Aintabi
Elliot Alper
The Amiel Family Foundation
Sharon Azrieli
Maria Bernga Schwarz
Etty & Ralph Bienstock
The Leonard & Alice Cohen
Family Foundation
Maxwell Cummings
Family Foundation
Jack Dym Investments Ltd.
EPM Mecanic
Anne-Marie & Mitch Garber
Family Foundation
Leo & Shirley Goldfarb
Foundation
HUB International
Adriana Kotler
Karla Lach
Steven Lach
Dave Lamothe
Nan & Bill Lassner

Mark Lazar
Alta & Harvey Levenson
Betty & Michael Prupas
Jeff & Patty Speak
Tauben Family Foundation
Wiseman Family Fund

The Segal also warmly extends our heartfelt gratitude to the generous supporters and guests of our annual Broadway Sur Le Deck, hosted by Howard and Vivian Stotland:

Bob Abrams
Heather Adelson
SharonAzrieli
Susan Raymer & Ben Wygodny
Ralph & Etty Bienstock
Sharon Cape
Gail & Brad Cohen
Yona Cohen Waxman
Lewis Dobrin
Andrea Freedman
Ethel, Michael & Jennifer Gold
Yaffa & Alan Handel
Cheryl & Andre Ibgly
Pierre Lapointe
Nan Lassner
Barry Laxer
Alice Lehrer
Shirley Anne &
Peter Lewis
Andi & Dini Lewittes
Karen Palayew & Lorne Segal

Michael Flinker &
Marcia Gillman
David & Sandy Martz
Cynthia & Doug Mayoff
Sam Minzberg
Evie & Morrie Neiss
Heather & Joseph Paperman
Sylvi Plante & Neil Wiener
Eunice Prosterman
Betty & Michael Prupas
Alice & Joel Raby
Alissa Rappaport
Michael Samra
Barbara Seal C.M.
Emmelle Segal
Jeff Segel
Lila & Stephen
Simco
Mark Spatzner
Barry Steinberg
Janice Steinberg
Bernard & Merle Stotland
Kathy & Harold Stotland
Lisa Stotland
Terry Suss
Kate & Stephen Takacsy
Lawrence Vatch
Anne Wajcer & Rick Rubin
Yona & Lawrence Waxman
Heleena & Eddy Wiltzer

To learn more about joining the Segal's Red Carpet Circle,
contact Director of Development, Alexandra Yanofsky at ayanofsky@segalcentre.org.

To learn more about joining us at this summer's Broadway Sur Le Deck, contact
Development Officer, Stephanie McKenna at smckenna@segalcentre.org.

A ROUND OF APPLAUSE FOR OUR SUPPORTERS!

WE SALUTE THE ALVIN SEGAL FAMILY FOUNDATION for its extraordinary support and commitment in helping the Segal Centre for Performing Arts maintain the highest standards of performance.

THE SEGAL CENTRE GRATEFULLY
ACKNOWLEDGES THE SUPPORT OF



RICHTER



POWER CORPORATION
DU CANADA



Liebman Légal Inc.



ALDO



Mécénat Musica

MEDIA PARTNERS



The Suburban

THE Montrealer



PUBLIC FUNDING

Canada



Canada Council
for the Arts



Conseil
des arts
et des lettres
du Québec

Culture
et Communications
Québec



Montréal



INTERESTED IN BECOMING A SPONSOR?

Contact our development team at 514-739-2301 ext. 8302 / development@segalcentre.org



A #\$\$@!% GOOD TIME!



POTUS

OR BEHIND EVERY GREAT DUMBASS
ARE SEVEN WOMEN TRYING
TO KEEP HIM ALIVE

BY SELINA FILLINGER
DIRECTED BY LISA RUBIN

SEGALCENTRE.ORG

May 12
- June 2
2024