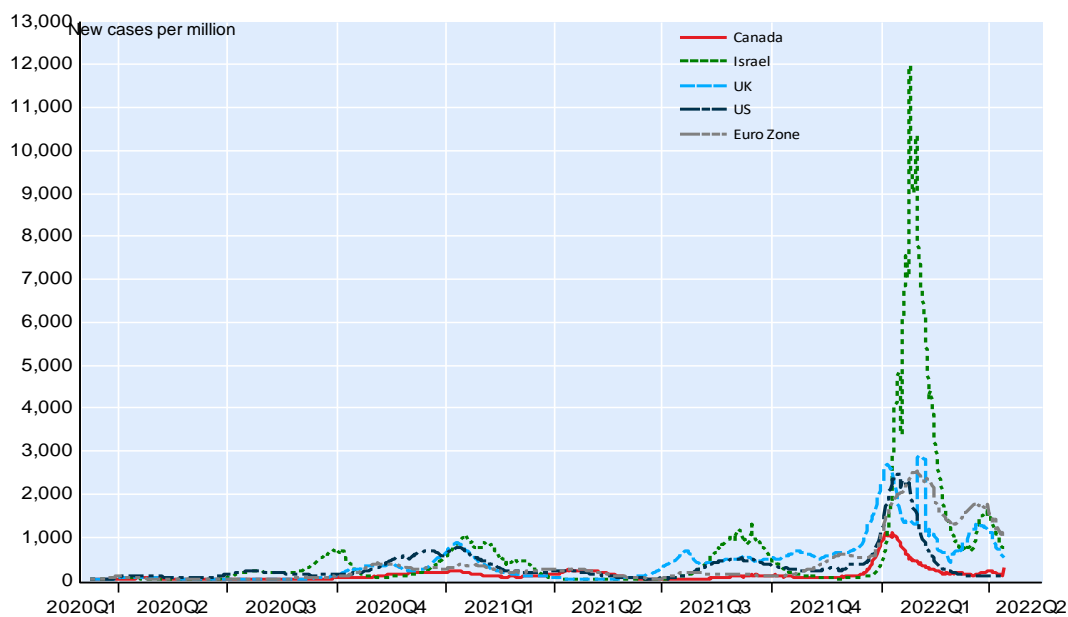


April 14, 2022

This monitor provides weekly updates on the evolution of COVID-19 in selected countries using data available as of 8:00am EDT (graphs 1-12). We also track the progression of vaccines around the world (graphs 13-17), monitor the stringency of policy related to containment restrictions and public information campaigns (graph 18), monitor the reopening of economies (graph 19-20), and offer an update of our financial conditions index for Canada (graph 21).

## 1. World: Evolution of the pandemic

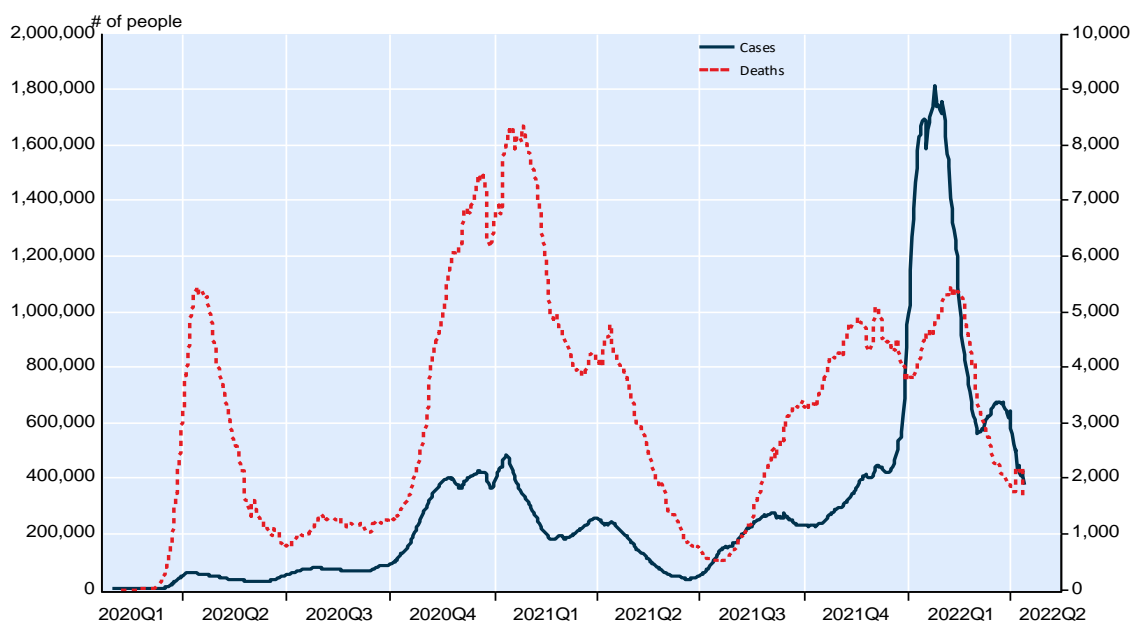
Daily new cases per million population by region, 7-day mov. average



NBF Economics and Strategy (data via Johns Hopkins CSSE)

## 2. Developed countries: Perspective on COVID-19 cases and deaths

New cases and new deaths in Europe and North America, 7-day mov. average

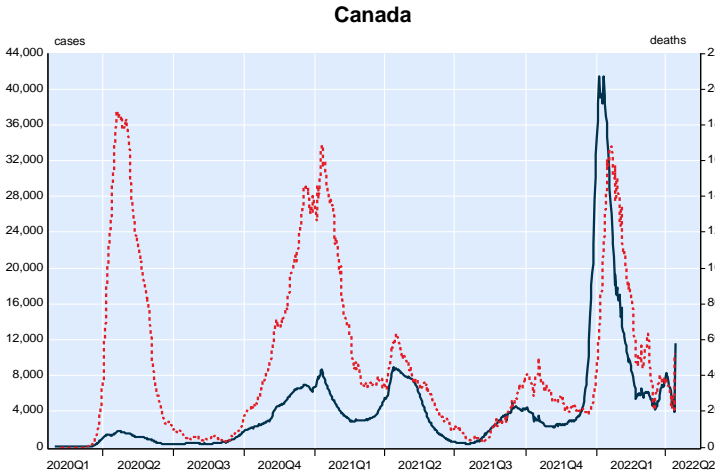


NBF Economics and Strategy (data via Johns Hopkins CSSE)

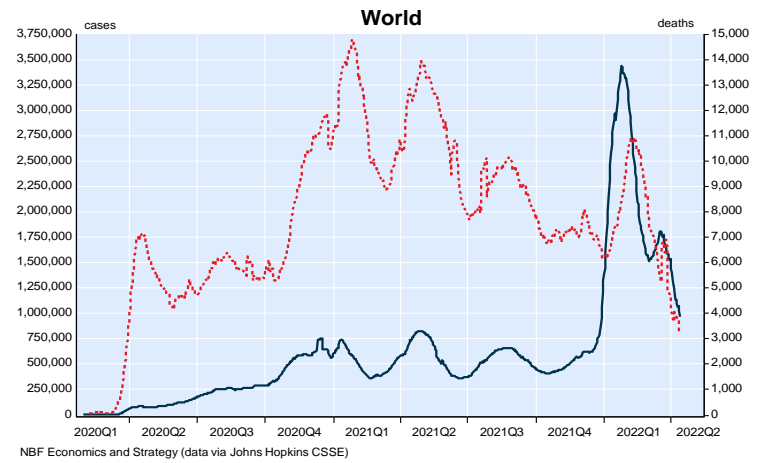
### 3. Evolution of the COVID-19 pandemic, selected countries

Daily change in cases and in deaths, 7 day moving average (data via Johns Hopkins CSSE)

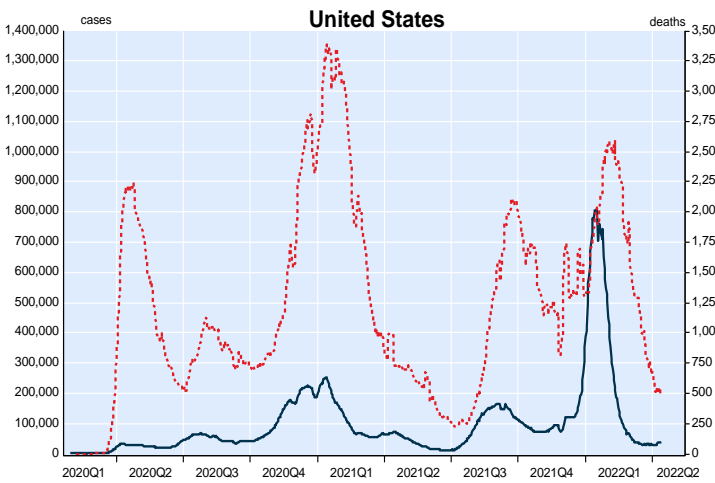
■ New cases (left axis) ■ New deaths (right axis)



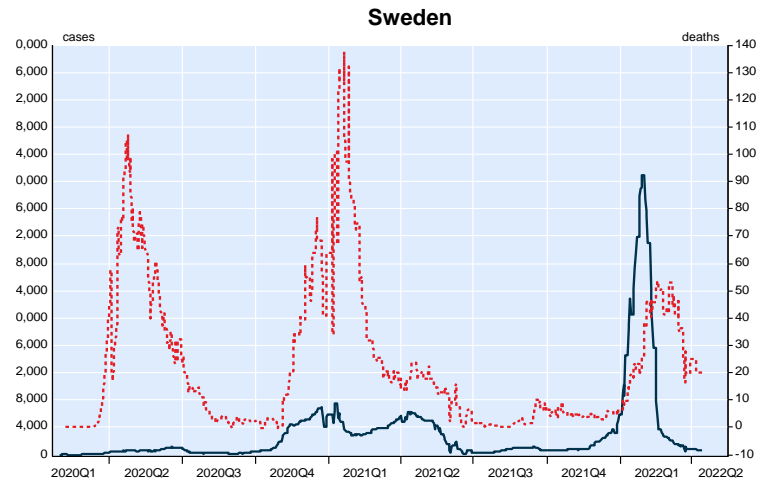
NBF Economics and Strategy



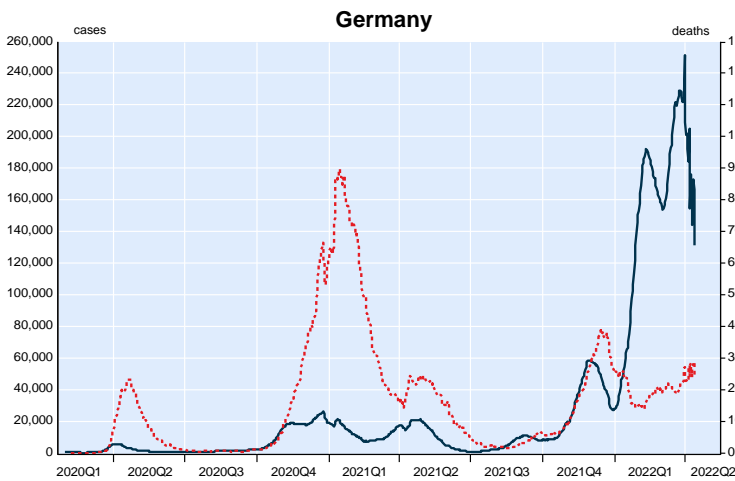
NBF Economics and Strategy (data via Johns Hopkins CSSE)



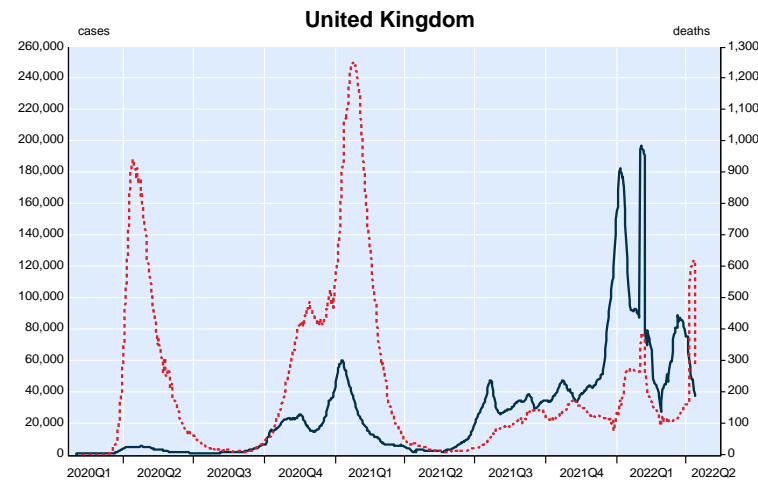
NBF Economics and Strategy



3F Economics and Strategy



NBF Economics and Strategy

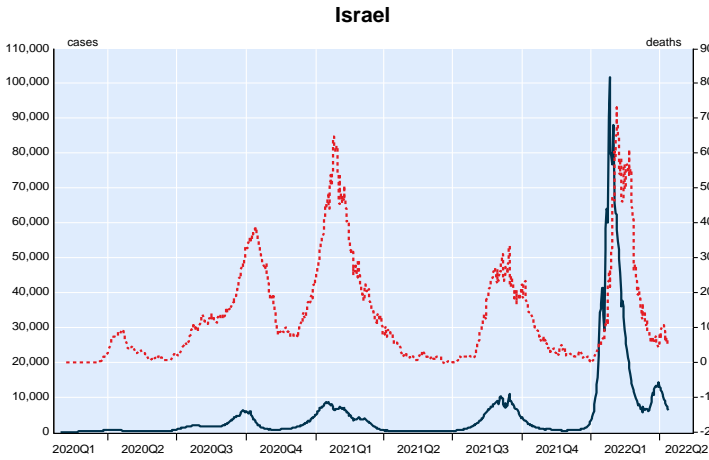


\*Volatility in cumulative number of cases due to new episode based reporting which includes reinfections.  
NBF Economics and Strategy

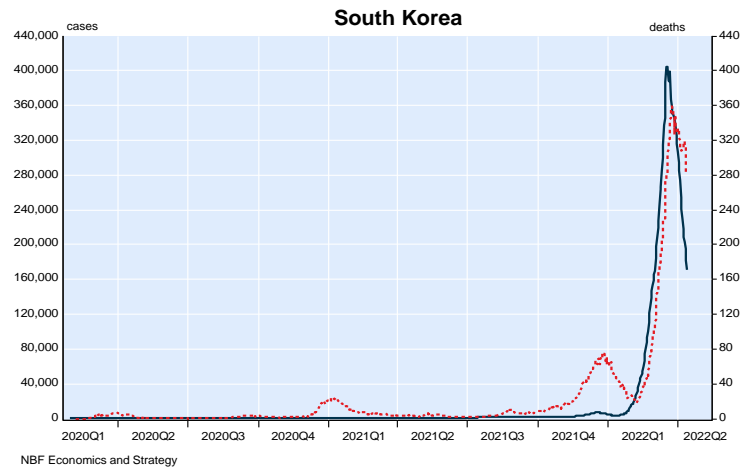
### 3. Evolution of the COVID-19 pandemic, selected countries (continued)

Daily change in cases and in deaths (data via Johns Hopkins CSSE)

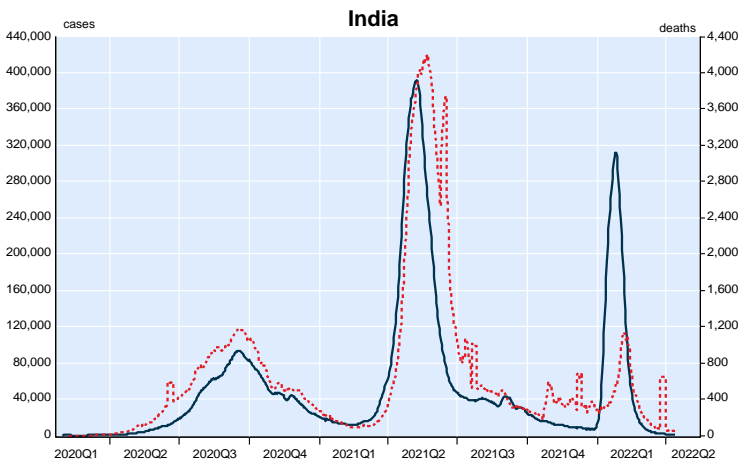
■ New cases (left axis) ■ New deaths (right axis)



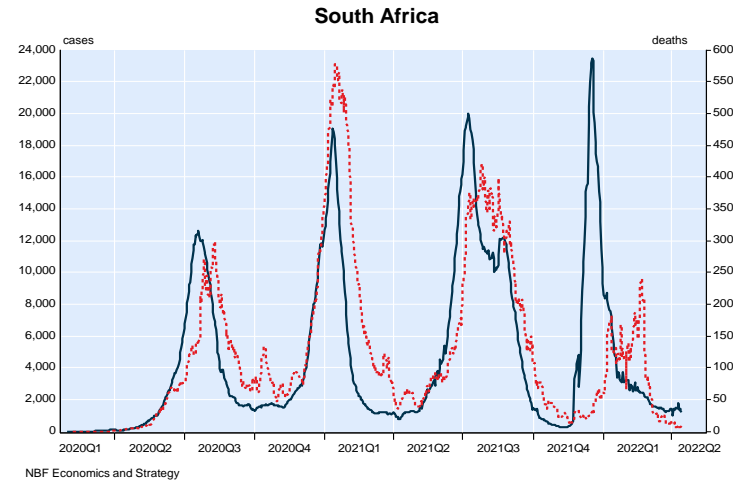
NBF Economics and Strategy



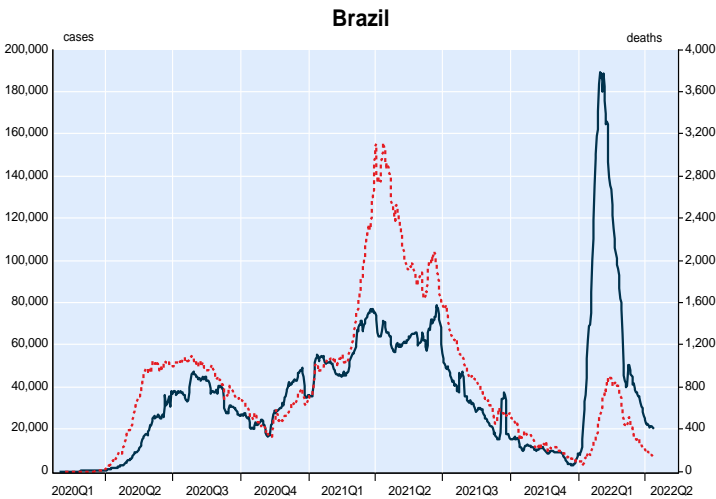
NBF Economics and Strategy



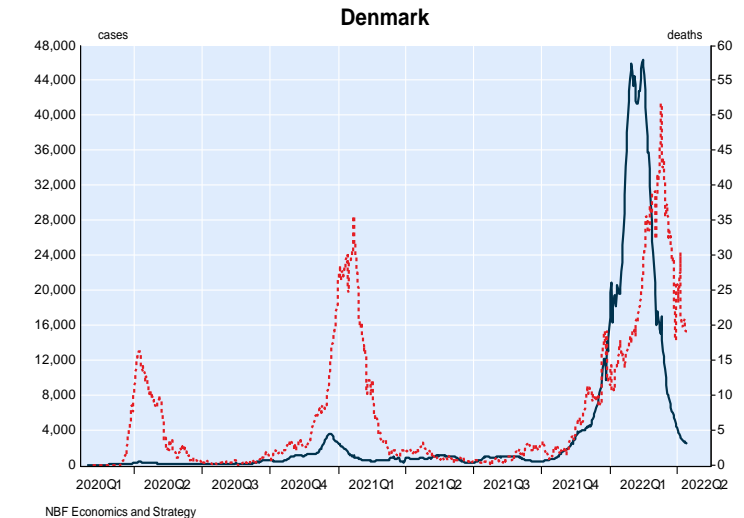
NBF Economics and Strategy



NBF Economics and Strategy



NBF Economics and Strategy



NBF Economics and Strategy

## 4. World, cases per million population, selected countries

|                        | Total cases per million population since start of the pandemic | Average new daily cases per million population |         |         |         |         |         |         |         |              |      | Last 7 days | 7 days vs 28 days trend |
|------------------------|--|--|---------|---------|---------|---------|---------|---------|---------|--------------|------|-------------|-------------------------|
|                        |  | Q2 2020  | Q3 2020 | Q4 2020 | Q1 2021 | Q2 2021 | Q3 2021 | Q4 2021 | Q1 2022 | Last 28 days |      |             |                         |
| South Korea            | 311 939  | 1  | 2       | 8       | 9       | 12      | 33      | 68      | 147     | 5388         | 3348 | ↓           |                         |
| Australia              | 208 799  | 1  | 8       | 1       | 0       | 1       | 33      | 137     | 1820    | 2124         | 1993 | ↓           |                         |
| France                 | 408 127  | 24   | 64      | 340     | 340     | 185     | 190     | 487     | 2586    | 1908         | 1979 | ↑           |                         |
| Germany                | 277 578  | 16   | 13      | 189     | 146     | 117     | 66      | 384     | 1840    | 2347         | 1568 | ↓           |                         |
| Austria                | 448 525  | 9  | 33      | 384     | 230     | 128     | 112     | 650     | 3170    | 2922         | 1322 | ↓           |                         |
| Italy                  | 255 448  | 24   | 13      | 322     | 271     | 123     | 74      | 261     | 1567    | 1123         | 1018 | ↓           |                         |
| Portugal               | 362 705  | 37   | 36      | 359     | 443     | 62      | 202     | 341     | 2356    | 1034         | 981  | ↓           |                         |
| Belgium                | 341 783  | 46   | 54      | 497     | 227     | 193     | 151     | 810     | 1657    | 805          | 771  | ↓           |                         |
| Israel                 | 471 524  | 25   | 283     | 224     | 535     | 11      | 562     | 130     | 3324    | 1172         | 707  | ↓           |                         |
| Switzerland            | 415 390  | 19   | 27      | 505     | 192     | 130     | 174     | 623     | 2815    | 1503         | 664  | ↓           |                         |
| United Kingdom         | 319 876  | 40   | 27      | 326     | 304     | 74      | 481     | 822     | 1346    | 949          | 534  | ↓           |                         |
| Netherlands            | 473 233  | 24   | 45      | 430     | 309     | 265     | 202     | 718     | 3135    | 1419         | 490  | ↓           |                         |
| Vietnam                | 106 753  | 0  | 0       | 0       | 0       | 2       | 87      | 106     | 902     | 1287         | 470  | ↓           |                         |
| Denmark                | 535 672  | 19   | 29      | 255     | 129     | 120     | 123     | 835     | 201     | 705          | 405  | ↓           |                         |
| Japan                  | 56 597   | 1  | 6       | 13      | 21      | 28      | 78      | 2       | 423     | 356          | 393  | ↑           |                         |
| Canada                 | 94 969   | 28   | 16      | 121     | 118     | 125     | 60      | 160     | 372     | 204          | 306  | ↑           |                         |
| Hong Kong              | 160 610  | 16   | 13      | 189     | 146     | 117     | 66      | 384     | 1720    | 1052         | 263  | ↓           |                         |
| Finland                | 166 430  | 12   | 5       | 51      | 83      | 36      | 90      | 253     | 1225    | 917          | 186  | ↓           |                         |
| Chile                  | 185 669  | 160  | 105     | 84      | 227     | 325     | 56      | 87      | 983     | 343          | 173  | ↓           |                         |
| Spain                  | 248 785  | 36   | 121     | 270     | 322     | 123     | 267     | 311     | 1253    | 281          | 149  | ↓           |                         |
| Norway                 | 263 698  | 9  | 10      | 72      | 96      | 72      | 117     | 414     | 2110    | 334          | 145  | ↓           |                         |
| United States          | 244 392  | 82   | 151     | 427     | 350     | 107     | 322     | 372     | 860     | 96           | 117  | ↑           |                         |
| Brazil                 | 143 146  | 73   | 176     | 148     | 267     | 302     | 148     | 44      | 406     | 122          | 96   | ↓           |                         |
| Turkey                 | 179 528  | 25   | 15      | 246     | 148     | 278     | 225     | 303     | 722     | 152          | 82   | ↓           |                         |
| Sweden                 | 246 749  | 69   | 27      | 371     | 404     | 310     | 68      | 174     | 1298    | 70           | 58   | ↓           |                         |
| Mexico                 | 44 872   | 19   | 44      | 58      | 71      | 24      | 98      | 27      | 2733    | 31           | 46   | ↑           |                         |
| Argentina              | 202 272  | 16   | 167     | 212     | 179     | 521     | 191     | 96      | 848     | 57           | 34   | ↓           |                         |
| Ecuador                | 49 821   | 19   | 29      | 255     | 129     | 120     | 123     | 835     | 4385    | 33           | 27   | ↓           |                         |
| South Africa           | 63 793   | 28   | 97      | 71      | 93      | 80      | 172     | 103     | 50      | 22           | 20   | ↓           |                         |
| China (exc. Hong Kong) | 340  | 0  | 0       | 0       | 0       | 0       | 0       | 0       | 1       | 8            | 17   | ↑           |                         |
| Bolivia                | 78 492   | 32   | 96      | 23      | 108     | 160     | 57      | 94      | 295     | 16           | 12   | ↓           |                         |
| Colombia               | 120 958  | 21   | 158     | 176     | 169     | 400     | 155     | 43      | 207     | 7            | 6    | ↓           |                         |
| Cambodia               | 8 250  | 0  | 0       | 0       | 1       | 32      | 41      | 5       | 10      | 3            | 2    | ↓           |                         |
| India                  | 31 498   | 16   | 13      | 189     | 146     | 117     | 66      | 384     | 73      | 1            | 1    | ↓           |                         |

Data via Johns Hopkins CSSE

\*France : correction on May 20<sup>th</sup> of 349 116 duplicated cases.

[Des indicateurs plus précis pour le suivi des cas confirmés de Covid-19 \(santepubliquefrance.fr\)](https://santepubliquefrance.fr)

## 5. World, deaths per million population, selected countries

|                        | Total deaths per million population since start of the pandemic | Average new daily deaths per million population |         |         |         |         |         |         |         |              | Last 7 days | 7 days vs 28 days trend |
|------------------------|---|---|---------|---------|---------|---------|---------|---------|---------|--------------|-------------|-------------------------|
|                        |   | Q2 2020   | Q3 2020 | Q4 2020 | Q1 2021 | Q2 2021 | Q3 2021 | Q4 2021 | Q1 2022 | Last 28 days |             |                         |
| Hong Kong              | 1203  | 0.1   | 0.3     | 0.5     | 0.8     | 0.7     | 3.4     | 0.1     | 11.3    | 19.7         | 9.4         | ↓                       |
| South Korea            | 397   | 3.3   | 0.2     | 3.2     | 3.3     | 0.8     | 0.3     | 1.8     | 2.3     | 6.2          | 5.5         | ↓                       |
| United Kingdom         | 2520  | 0.0   | 0.0     | 0.0     | 0.0     | 0.0     | 2.2     | 1.5     | 2.7     | 4.1          | 4.1         | ↑                       |
| Austria                | 1823  | 0.7   | 0.1     | 6.6     | 3.9     | 1.7     | 0.4     | 3.3     | 2.6     | 4.1          | 3.6         | ↓                       |
| Denmark                | 1030  | 1.0   | 0.1     | 1.2     | 2.2     | 0.2     | 0.2     | 1.2     | 1.1     | 4.3          | 3.3         | ↓                       |
| Norway                 | 517   | 0.5   | 2.6     | 2.2     | 4.6     | 1.5     | 5.0     | 0.7     | 2.5     | 6.4          | 3.1         | ↓                       |
| Germany                | 1589  | 0.1   | 0.6     | 0.4     | 0.1     | 1.9     | 0.4     | 0.3     | 3.1     | 2.8          | 2.8         | ↑                       |
| Italy                  | 2662  | 0.0   | 0.0     | 0.1     | 0.2     | 0.1     | 0.1     | 0.7     | 3.0     | 2.3          | 2.2         | ↓                       |
| Portugal               | 2148  | 4.7   | 0.8     | 4.4     | 5.9     | 1.3     | 1.3     | 0.7     | 2.8     | 2.2          | 2.2         | ↑                       |
| Belgium                | 2693  | 8.6   | 0.3     | 9.0     | 3.4     | 2.1     | 0.4     | 2.6     | 2.4     | 1.8          | 2.1         | ↑                       |
| Chile                  | 3013  | 3.3   | 4.0     | 2.2     | 3.8     | 5.5     | 2.8     | 0.9     | 10.3    | 24.6         | 2.1         | ↓                       |
| Sweden                 | 1832  | 0.6   | 0.4     | 1.7     | 1.4     | 2.4     | 1.9     | 2.4     | 3.2     | 2.0          | 2.0         | ↓                       |
| France                 | 2159  | 1.1   | 0.1     | 3.2     | 5.7     | 1.9     | 0.4     | 2.4     | 2.3     | 1.7          | 1.9         | ↑                       |
| United States          | 2997  | 0.0   | 0.0     | 0.0     | 0.0     | 0.0     | 2.2     | 1.5     | 5.2     | 2.0          | 1.5         | ↓                       |
| Canada                 | 1005  | 2.5   | 0.2     | 1.8     | 2.1     | 1.0     | 0.5     | 0.7     | 2.1     | 1.0          | 1.4         | ↑                       |
| Australia              | 266   | 0.0   | 0.3     | 0.0     | 0.0     | 0.0     | 0.2     | 0.4     | 1.7     | 1.5          | 1.1         | ↓                       |
| Spain                  | 2206  | 1.7   | 0.1     | 7.5     | 3.1     | 0.6     | 0.4     | 1.4     | 3.1     | 1.3          | 1.1         | ↓                       |
| Israel                 | 1244  | 0.1   | 0.1     | 0.2     | 0.5     | 0.5     | 0.2     | 0.1     | 4.0     | 0.8          | 0.8         | ↓                       |
| Finland                | 603   | 4.4   | 0.3     | 5.4     | 5.3     | 2.5     | 0.7     | 1.1     | 2.8     | 3.7          | 0.7         | ↓                       |
| Netherlands            | 1296  | 1.5   | 0.4     | 5.2     | 10.8    | 0.3     | 0.9     | 1.0     | 0.7     | 0.8          | 0.7         | ↓                       |
| Brazil                 | 3136  | 3.1   | 4.3     | 2.6     | 6.7     | 10.2    | 4.1     | 1.1     | 2.2     | 1.0          | 0.6         | ↓                       |
| Ecuador                | 2044  | 0.6   | 0.0     | 0.4     | 0.6     | 0.2     | 0.2     | 1.2     | 4.7     | 0.3          | 0.5         | ↑                       |
| Mexico                 | 2538  | 0.4   | 0.0     | 0.3     | 0.5     | 0.2     | 0.1     | 0.9     | 2.1     | 0.7          | 0.5         | ↓                       |
| Argentina              | 2865  | 0.3   | 3.8     | 6.4     | 3.1     | 9.4     | 5.1     | 0.5     | 2.7     | 0.8          | 0.4         | ↓                       |
| Japan                  | 227   | 2.4   | 4.2     | 4.1     | 6.7     | 2.6     | 3.8     | 1.9     | 0.9     | 0.6          | 0.4         | ↓                       |
| Turkey                 | 1181  | 6.1   | 0.3     | 5.0     | 8.7     | 0.2     | 1.4     | 1.9     | 2.1     | 0.7          | 0.4         | ↓                       |
| Switzerland            | 1585  | 0.3   | 0.8     | 3.7     | 3.8     | 5.0     | 1.3     | 10.4    | 1.8     | 1.3          | 0.3         | ↓                       |
| Vietnam                | 445   | 0.0   | 0.0     | 0.0     | 0.0     | 0.0     | 2.2     | 1.5     | 1.2     | 0.5          | 0.2         | ↓                       |
| South Africa           | 1710  | 5.4   | 0.6     | 3.1     | 5.2     | 1.3     | 0.3     | 0.5     | 1.7     | 0.2          | 0.2         | ↓                       |
| Indonesia              | 576   | 4.1   | 0.2     | 6.9     | 6.5     | 3.3     | 0.6     | 1.2     | 0.5     | 0.4          | 0.1         | ↓                       |
| Colombia               | 2776  | 0.7   | 4.9     | 3.7     | 4.5     | 9.4     | 4.3     | 0.8     | 2.2     | 0.3          | 0.1         | ↓                       |
| Bolivia                | 1902  | 1.1   | 6.5     | 1.1     | 3.0     | 4.3     | 1.9     | 0.9     | 2.2     | 1.3          | 0.0         | ↓                       |
| India                  | 382   | 0.4   | 1.6     | 2.2     | 3.8     | 0.3     | 1.7     | 0.6     | 0.3     | 0.1          | 0.0         | ↓                       |
| Cambodia               | 185   | 0.0   | 0.0     | 0.0     | 0.0     | 0.4     | 1.1     | 0.5     | 0.0     | 0.0          | 0.0         | ↓                       |
| China (exc. Hong Kong) | 3   | 0.0   | 0.0     | 0.0     | 0.0     | 0.0     | 0.0     | 0.0     | 0.0     | 0.0          | 0.0         | ↓                       |

Data via Johns Hopkins University (CSSE)

## 6. United States, cases per million population

|                | Total cases per million population since start of the pandemic | Average new daily cases per million population |         |         |         |         |         |         |         | Last 28 days | Last 7 days | 7 days vs 28 days trend |
|----------------|--|--|---------|---------|---------|---------|---------|---------|---------|--------------|-------------|-------------------------|
|                |  | Q2 2020  | Q3 2020 | Q4 2020 | Q1 2021 | Q2 2021 | Q3 2021 | Q4 2021 | Q1 2022 |              |             |                         |
| Vermont        | 190 697  | 16   | 9       | 99      | 211     | 90      | 161     | 536     | 937     | 255          | 335         | ↑                       |
| Rhode Island   | 344 556  | 169  | 81      | 648     | 518     | 159     | 203     | 603     | 1377    | 215          | 320         | ↑                       |
| Alaska         | 341 712  | 15   | 114     | 567     | 241     | 126     | 645     | 632     | 1383    | 273          | 254         | ↓                       |
| Massachusetts  | 249 312  | 151  | 44      | 383     | 420     | 119     | 161     | 518     | 907     | 178          | 253         | ↑                       |
| New Hampshire  | 224 160  | 44   | 20      | 293     | 321     | 124     | 166     | 627     | 857     | 108          | 237         | ↑                       |
| New York       | 259 537  | 181  | 37      | 289     | 511     | 137     | 174     | 589     | 873     | 173          | 235         | ↑                       |
| Colorado       | 236 441  | 57   | 71      | 497     | 247     | 183     | 214     | 487     | 811     | 200          | 232         | ↑                       |
| New Jersey     | 250 057  | 190  | 47      | 390     | 475     | 142     | 161     | 501     | 802     | 148          | 208         | ↑                       |
| Maine          | 177 631  | 24   | 17      | 152     | 217     | 151     | 169     | 459     | 743     | 155          | 190         | ↑                       |
| Arizona        | 277 081  | 118  | 208     | 451     | 491     | 80      | 297     | 430     | 950     | 145          | 189         | ↑                       |
| Connecticut    | 208 693  | 134  | 34      | 391     | 389     | 119     | 125     | 365     | 712     | 129          | 184         | ↑                       |
| Texas          | 233 857  | 61   | 230     | 373     | 391     | 79      | 400     | 198     | 818     | 125          | 180         | ↑                       |
| Florida        | 274 999  | 75   | 280     | 312     | 380     | 157     | 616     | 317     | 876     | 63           | 142         | ↑                       |
| Washington     | 193 273  | 40   | 80      | 225     | 172     | 126     | 294     | 273     | 894     | 146          | 138         | ↓                       |
| Illinois       | 243 748  | 119  | 131     | 573     | 247     | 128     | 202     | 448     | 813     | 107          | 136         | ↑                       |
| Hawaii         | 171 837  | 6  | 90      | 72      | 69      | 54      | 318     | 259     | 1015    | 114          | 134         | ↑                       |
| Wisconsin      | 273 625  | 51   | 175     | 743     | 221     | 78      | 247     | 580     | 896     | 85           | 127         | ↑                       |
| Virginia       | 255 319  | 83   | 125     | 345     | 424     | 108     | 335     | 432     | 947     | 108          | 126         | ↑                       |
| Michigan       | 240 415  | 69   | 73      | 425     | 242     | 279     | 163     | 610     | 762     | 91           | 111         | ↑                       |
| Kentucky       | 295 564  | 37   | 129     | 478     | 402     | 94      | 550     | 401     | 1147    | 254          | 104         | ↓                       |
| Minnesota      | 254 611  | 70   | 121     | 609     | 205     | 167     | 204     | 600     | 811     | 77           | 99          | ↑                       |
| Oregon         | 167 986  | 21   | 64      | 207     | 135     | 114     | 313     | 235     | 753     | 67           | 92          | ↑                       |
| Maryland       | 168 372  | 120  | 103     | 273     | 248     | 93      | 126     | 339     | 540     | 62           | 88          | ↑                       |
| Pennsylvania   | 218 111  | 73   | 62      | 411     | 335     | 164     | 185     | 503     | 653     | 56           | 77          | ↑                       |
| North Carolina | 251 642  | 69   | 149     | 341     | 397     | 104     | 395     | 302     | 966     | 91           | 71          | ↓                       |
| California     | 231 260  | 65   | 160     | 431     | 378     | 43      | 237     | 213     | 1018    | 77           | 71          | ↓                       |
| New Mexico     | 247 760  | 62   | 90      | 588     | 259     | 73      | 246     | 503     | 899     | 63           | 55          | ↓                       |
| Nevada         | 230 222  | 62   | 217     | 511     | 285     | 107     | 309     | 223     | 810     | 54           | 53          | ↓                       |
| Ohio           | 228 985  | 47   | 95      | 508     | 302     | 88      | 281     | 560     | 628     | 39           | 47          | ↑                       |
| Oklahoma       | 261 942  | 37   | 202     | 560     | 417     | 50      | 428     | 261     | 916     | 89           | 43          | ↓                       |
| Georgia        | 235 965  | 80   | 242     | 357     | 411     | 78      | 455     | 267     | 695     | 84           | 42          | ↓                       |
| Iowa           | 240 975  | 100  | 207     | 663     | 245     | 78      | 269     | 425     | 652     | 34           | 41          | ↑                       |
| Tennessee      | 296 302  | 66   | 243     | 622     | 366     | 89      | 575     | 293     | 959     | 33           | 41          | ↑                       |
| Mississippi    | 267 506  | 97   | 259     | 430     | 334     | 61      | 609     | 202     | 946     | 35           | 35          | ↓                       |
| North Dakota   | 315 245  | 50   | 261     | 1008    | 154     | 110     | 306     | 599     | 1009    | 40           | 33          | ↓                       |
| Kansas         | 264 871  | 53   | 174     | 612     | 300     | 57      | 338     | 412     | 966     | 23           | 33          | ↑                       |
| Nebraska       | 247 290  | 108  | 148     | 681     | 244     | 86      | 236     | 403     | 811     | 23           | 33          | ↑                       |
| West Virginia  | 278 238  | 17   | 79      | 421     | 350     | 137     | 463     | 532     | 1063    | 53           | 33          | ↓                       |
| Alabama        | 264 616  | 84   | 258     | 458     | 349     | 80      | 544     | 222     | 913     | 53           | 32          | ↓                       |
| Utah           | 289 655  | 73   | 172     | 690     | 378     | 101     | 317     | 436     | 1019    | 28           | 31          | ↑                       |
| Idaho          | 248 960  | 34   | 219     | 602     | 245     | 89      | 379     | 377     | 783     | 82           | 31          | ↓                       |
| Montana        | 255 452  | 8  | 123     | 696     | 239     | 95      | 379     | 475     | 787     | 36           | 30          | ↓                       |
| Indiana        | 251 561  | 71   | 120     | 632     | 289     | 110     | 340     | 456     | 741     | 30           | 28          | ↓                       |
| Missouri       | 231 090  | 37   | 192     | 549     | 255     | 79      | 354     | 333     | 737     | 48           | 28          | ↓                       |
| Arkansas       | 276 343  | 74   | 227     | 509     | 388     | 69      | 528     | 254     | 992     | 74           | 27          | ↓                       |
| South Carolina | 285 624  | 75   | 235     | 337     | 527     | 96      | 550     | 249     | 1075    | 34           | 25          | ↓                       |
| Louisiana      | 251 660  | 125  | 256     | 346     | 310     | 86      | 606     | 206     | 821     | 23           | 24          | ↑                       |
| South Dakota   | 268 318  | 83   | 192     | 943     | 234     | 84      | 252     | 420     | 735     | 25           | 20          | ↓                       |
| Wyoming        | 269 988  | 26   | 84      | 722     | 228     | 114     | 532     | 470     | 786     | 27           | -1          | ↓                       |

Data via Johns Hopkins CSSE

## 7. United States, deaths per million population

|                | Total deaths per million population since start of the pandemic | Average new daily deaths per million population |         |         |         |         |         |         |         | Last 28 days | Last 7 days | 7 days vs 28 days trend |
|----------------|---|---|---------|---------|---------|---------|---------|---------|---------|--------------|-------------|-------------------------|
|                |   | Q2 2020   | Q3 2020 | Q4 2020 | Q1 2021 | Q2 2021 | Q3 2021 | Q4 2021 | Q1 2022 |              |             |                         |
| Nevada         | 3 409   | 1.7   | 3.9     | 5.4     | 7.7     | 1.5     | 5.2     | 4.5     | 7.0     | 6.4          | 16.9        | ↑                       |
| Maine          | 1 693   | 0.8   | 0.3     | 1.7     | 3.3     | 0.9     | 1.3     | 4.1     | 3.6     | 2.9          | 7.2         | ↑                       |
| Oregon         | 1 755   | 0.5   | 0.9     | 2.4     | 2.4     | 1.0     | 2.6     | 4.8     | 4.0     | 4.0          | 6.1         | ↑                       |
| Kansas         | 2 918   | 1.0   | 1.5     | 7.7     | 8.2     | 0.9     | 3.4     | 3.5     | 4.1     | 5.1          | 5.1         | ↑                       |
| Tennessee      | 3 813   | 0.9   | 2.9     | 7.1     | 8.1     | 1.1     | 4.1     | 9.1     | 7.9     | 3.4          | 5.1         | ↑                       |
| Kentucky       | 3 408   | 1.4   | 1.5     | 3.5     | 8.6     | 2.8     | 3.8     | 8.1     | 6.1     | 9.0          | 4.8         | ↓                       |
| Oklahoma       | 3 953   | 1.0   | 1.8     | 4.0     | 6.9     | 6.8     | 4.3     | 9.5     | 5.6     | 5.3          | 4.3         | ↓                       |
| New Mexico     | 3 524   | 2.6   | 2.0     | 8.3     | 7.7     | 2.1     | 2.4     | 5.5     | 7.2     | 4.7          | 3.9         | ↓                       |
| Virginia       | 3 132   | 2.4   | 2.2     | 3.6     | 8.5     | 1.8     | 2.7     | 5.7     | 7.3     | 3.0          | 3.4         | ↑                       |
| West Virginia  | 3 781   | 0.6   | 1.6     | 6.0     | 8.3     | 1.3     | 4.7     | 10.1    | 9.3     | 3.1          | 2.9         | ↓                       |
| Arizona        | 4 097   | 2.4   | 6.0     | 4.8     | 12.4    | 1.5     | 3.1     | 6.3     | 7.8     | 6.3          | 2.8         | ↓                       |
| Georgia        | 3 525   | 2.8   | 4.3     | 4.0     | 8.5     | 2.5     | 4.8     | 5.5     | 5.7     | 3.6          | 2.7         | ↓                       |
| Alabama        | 3 965   | 2.1   | 3.5     | 5.1     | 13.0    | 1.8     | 6.5     | 4.8     | 6.5     | 3.6          | 2.0         | ↓                       |
| Nebraska       | 2 166   | 1.5   | 1.1     | 6.6     | 3.0     | 0.5     | 3.2     | 2.8     | 5.2     | 2.7          | 1.9         | ↓                       |
| Delaware       | 2 962   | 6.4   | 1.0     | 4.6     | 5.7     | 1.5     | 2.9     | 3.7     | 5.1     | 2.6          | 1.9         | ↓                       |
| Arkansas       | 3 753   | 1.0   | 4.0     | 8.3     | 7.2     | 1.0     | 6.4     | 5.2     | 7.7     | 3.9          | 1.4         | ↓                       |
| Alaska         | 1 688   | 0.2   | 0.6     | 2.2     | 1.6     | 1.0     | 3.0     | 6.0     | 3.8     | 1.6          | 1.4         | ↓                       |
| Montana        | 3 049   | 0.2   | 1.6     | 7.9     | 4.9     | 2.3     | 3.5     | 9.1     | 5.6     | 1.0          | 1.3         | ↑                       |
| South Carolina | 3 437   | 1.5   | 5.6     | 4.0     | 8.3     | 1.4     | 5.6     | 4.6     | 6.4     | 2.2          | 1.3         | ↓                       |
| North Dakota   | 2 958   | 1.1   | 2.4     | 15.0    | 2.9     | 0.9     | 1.2     | 5.9     | 2.3     | 1.2          | 1.3         | ↑                       |
| Wyoming        | 3 112   | 0.4   | 0.6     | 7.3     | 5.0     | 0.9     | 4.7     | 10.0    | 5.1     | 2.0          | 1.2         | ↓                       |
| Colorado       | 2 089   | 3.1   | 0.7     | 5.2     | 2.5     | 1.3     | 1.4     | 5.1     | 8.4     | 1.0          | 1.2         | ↑                       |
| California     | 2 266   | 1.6   | 2.7     | 2.8     | 9.1     | 1.4     | 1.6     | 2.1     | 3.5     | 1.6          | 1.2         | ↓                       |
| Michigan       | 3 590   | 6.5   | 1.0     | 6.5     | 4.6     | 4.3     | 1.5     | 7.3     | 3.9     | 1.8          | 1.2         | ↓                       |
| New Hampshire  | 1 811   | 3.0   | 0.5     | 2.6     | 3.9     | 1.1     | 0.9     | 3.8     | 5.0     | 0.9          | 1.2         | ↑                       |
| Texas          | 3 028   | 1.0   | 5.0     | 4.4     | 7.7     | 1.5     | 4.8     | 4.0     | 4.5     | 1.4          | 1.1         | ↓                       |
| Florida        | 3 428   | 1.7   | 5.5     | 3.7     | 6.1     | 2.2     | 8.7     | 3.8     | 6.5     | 2.3          | 1.1         | ↓                       |
| Wisconsin      | 2 470   | 1.5   | 1.1     | 7.2     | 4.0     | 1.5     | 1.4     | 4.3     | 6.0     | 3.1          | 1.1         | ↓                       |
| North Carolina | 2 225   | 1.4   | 2.2     | 3.3     | 5.7     | 1.4     | 3.2     | 3.0     | 4.5     | 1.3          | 1.0         | ↓                       |
| Indiana        | 3 492   | 4.0   | 1.7     | 9.3     | 6.0     | 1.3     | 2.9     | 5.5     | 7.5     | 1.5          | 1.0         | ↓                       |
| Idaho          | 2 745   | 0.5   | 2.3     | 5.9     | 3.3     | 1.2     | 4.6     | 7.6     | 4.0     | 1.5          | 1.0         | ↓                       |
| Iowa           | 3 003   | 2.5   | 2.2     | 8.7     | 6.5     | 1.4     | 1.5     | 4.5     | 5.3     | 1.4          | 1.0         | ↓                       |
| Louisiana      | 3 698   | 7.0   | 5.4     | 4.6     | 6.3     | 1.4     | 7.5     | 2.4     | 4.7     | 1.8          | 0.9         | ↓                       |
| Washington     | 1 653   | 1.6   | 1.1     | 1.9     | 2.6     | 1.0     | 2.6     | 3.0     | 3.9     | 1.7          | 0.8         | ↓                       |
| South Dakota   | 3 276   | 1.1   | 1.6     | 15.5    | 5.6     | 1.2     | 1.3     | 4.2     | 5.0     | 1.1          | 0.8         | ↓                       |
| Hawaii         | 982   | 0.1   | 0.9     | 1.2     | 1.4     | 0.4     | 2.0     | 2.4     | 2.6     | 0.6          | 0.8         | ↑                       |
| Pennsylvania   | 3 471   | 5.7   | 1.2     | 6.7     | 7.9     | 2.2     | 1.5     | 6.2     | 6.6     | 1.3          | 0.8         | ↓                       |
| Utah           | 1 475   | 0.6   | 1.0     | 2.7     | 3.0     | 0.9     | 1.9     | 2.9     | 3.2     | 2.0          | 0.7         | ↓                       |
| Vermont        | 998   | 0.8   | 0.0     | 1.4     | 1.6     | 0.5     | 1.1     | 2.7     | 2.6     | 0.8          | 0.7         | ↓                       |
| Massachusetts  | 2 926   | 12.7  | 2.2     | 4.7     | 7.7     | 1.3     | 1.0     | 2.6     | 7.3     | 0.8          | 0.7         | ↓                       |
| Minnesota      | 2 251   | 2.9   | 1.2     | 6.3     | 3.0     | 1.5     | 1.1     | 4.6     | 7.5     | 1.2          | 0.6         | ↓                       |
| Illinois       | 2 836   | 5.9   | 1.7     | 7.8     | 4.9     | 1.8     | 1.5     | 2.4     | 4.9     | 0.9          | 0.6         | ↓                       |
| Maryland       | 2 380   | 5.8   | 1.4     | 3.5     | 4.4     | 2.6     | 1.3     | 2.4     | 7.2     | 0.7          | 0.6         | ↓                       |
| New Jersey     | 3 751   | 18.1  | 1.3     | 3.6     | 6.9     | 2.3     | 1.2     | 2.0     | 5.7     | 0.7          | 0.6         | ↓                       |
| Connecticut    | 3 032   | 13.1  | 0.6     | 4.5     | 5.9     | 1.2     | 1.1     | 1.6     | 3.3     | 1.3          | 0.6         | ↓                       |
| New York       | 3 500   | 16.5  | 0.7     | 2.6     | 7.0     | 1.9     | 1.1     | 2.3     | 4.9     | 0.6          | 0.5         | ↓                       |

Data via Johns Hopkins CSSE

## 8. Canada, cases per million population

|                      | Total cases per million population since start of the pandemic | Average new daily cases per million population |         |         |         |         |         |         |         |              |      | Last 7 days | 7 days vs 28 days trend |
|----------------------|--|--|---------|---------|---------|---------|---------|---------|---------|--------------|------|-------------|-------------------------|
|                      |  | Q2 2020  | Q3 2020 | Q4 2020 | Q1 2021 | Q2 2021 | Q3 2021 | Q4 2021 | Q1 2022 | Last 28 days |      |             |                         |
| Prince Edward Island | 191 724  | 0  | 2       | 2       | 5       | 3       | 6       | 41      | 1753    | 2080         | 1995 | ↓           |                         |
| New Brunswick        | 71 419   | 1  | 0       | 6       | 14      | 10      | 26      | 140     | 488     | 617          | 724  | ↑           |                         |
| Newfoundland         | 80 517   | 2  | 0       | 2       | 13      | 8       | 8       | 50      | 716     | 679          | 466  | ↓           |                         |
| Quebec               | 117 441  | 65   | 26      | 164     | 138     | 81      | 44      | 245     | 474     | 281          | 362  | ↑           |                         |
| Ontario              | 81 746   | 26   | 13      | 98      | 128     | 146     | 31      | 126     | 307     | 182          | 236  | ↑           |                         |
| Alberta              | 124 925  | 18   | 24      | 202     | 120     | 208     | 163     | 146     | 465     | 155          | 199  | ↑           |                         |
| British Columbia     | 69 540   | 4  | 13      | 90      | 104     | 102     | 82      | 145     | 221     | 34           | 0    | ↓           |                         |
| Manitoba             | 99 019   | 2  | 13      | 179     | 76      | 176     | 34      | 155     | 447     | 79           | 0    | ↓           |                         |
| Nova Scotia          | 67 382   | 10   | 0       | 4       | 3       | 46      | 9       | 123     | 425     | 534          | 0    | ↓           |                         |
| Saskatchewan         | 113 055  | 6  | 10      | 124     | 172     | 142     | 170     | 165     | 437     | 95           | 0    | ↓           |                         |

Data via [https://health-infobase.canada.ca/covid-19/epidemiological-summary-covid-19-cases.html?stat=num&measure=total\\_last7&map=pt#a2](https://health-infobase.canada.ca/covid-19/epidemiological-summary-covid-19-cases.html?stat=num&measure=total_last7&map=pt#a2), Statistics

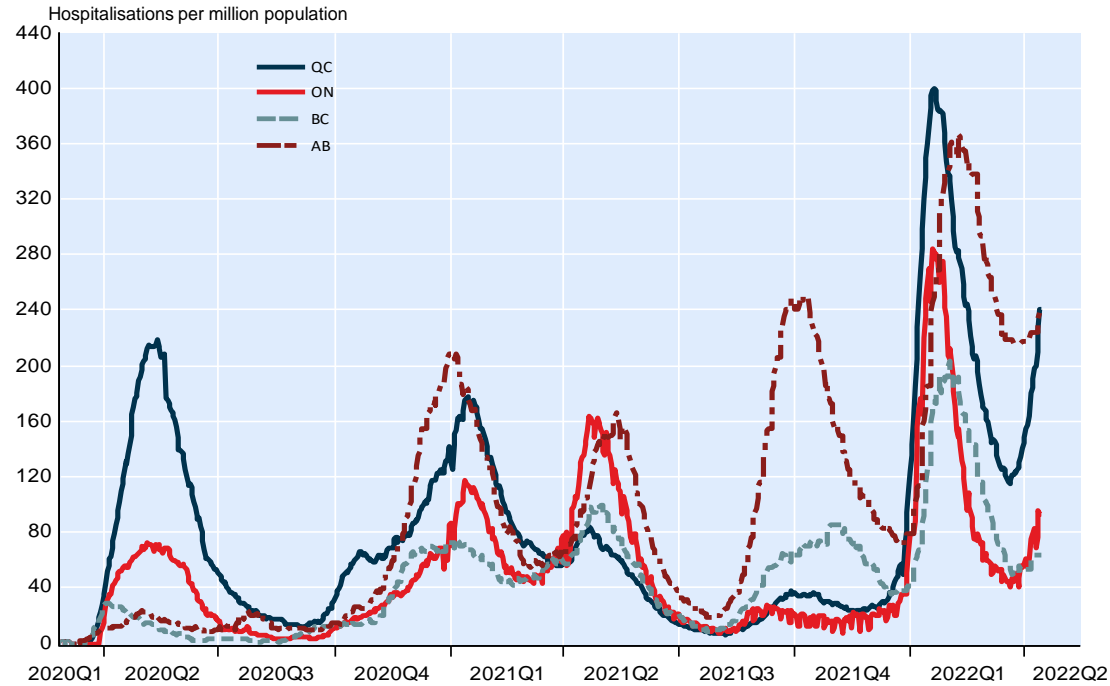
## 9. Canada, deaths per million population

|                      | Total deaths per million population since start of the pandemic | Average new daily deaths per million population |         |         |         |         |         |         |         |              |     | Last 7 days | 7 days vs 28 days trend |
|----------------------|---|---|---------|---------|---------|---------|---------|---------|---------|--------------|-----|-------------|-------------------------|
|                      |   | Q2 2020   | Q3 2020 | Q4 2020 | Q1 2021 | Q2 2021 | Q3 2021 | Q4 2021 | Q1 2022 | Last 28 days |     |             |                         |
| Newfoundland         | 262   | 0.0   | 0.0     | 0.0     | 0.0     | 0.0     | 0.0     | 0.2     | 1.8     | 3.8          | 4.1 | ↑           |                         |
| Quebec               | 1 702   | 7.1   | 0.3     | 3.1     | 3.0     | 0.7     | 0.2     | 0.4     | 3.4     | 1.6          | 2.3 | ↑           |                         |
| New Brunswick        | 471   | 0.0   | 0.0     | 0.1     | 0.3     | 0.2     | 0.2     | 1.4     | 2.7     | 2.2          | 1.8 | ↓           |                         |
| Prince Edward Island | 132   | 0.0   | 0.0     | 0.0     | 0.0     | 0.0     | 0.0     | 0.0     | 1.3     | 1.1          | 1.8 | ↑           |                         |
| Alberta              | 936   | 0.4   | 0.3     | 1.9     | 2.4     | 0.8     | 1.0     | 1.5     | 1.9     | 1.0          | 1.2 | ↑           |                         |
| Ontario              | 744   | 2.0   | 0.1     | 1.2     | 2.1     | 1.3     | 0.5     | 0.3     | 1.7     | 0.0          | 0.7 | ↑           |                         |
| British Columbia     | 584   | 0.3   | 0.1     | 1.4     | 1.2     | 0.6     | 0.4     | 1.0     | 1.2     | 0.4          | 0.0 | ↓           |                         |
| Manitoba             | 1 270   | 0.0   | 0.1     | 5.1     | 2.2     | 1.6     | 0.6     | 1.4     | 2.8     | 0.8          | 0.0 | ↓           |                         |
| Nova Scotia          | 269   | 0.7   | 0.0     | 0.0     | 0.0     | 0.3     | 0.1     | 0.2     | 1.2     | 1.1          | 0.0 | ↓           |                         |
| Saskatchewan         | 1 063   | 0.1   | 0.1     | 1.2     | 2.6     | 1.2     | 1.2     | 2.4     | 2.4     | 2.3          | 0.0 | ↓           |                         |

Data via [https://health-infobase.canada.ca/covid-19/epidemiological-summary-covid-19-cases.html?stat=num&measure=total\\_last7&map=pt#a2](https://health-infobase.canada.ca/covid-19/epidemiological-summary-covid-19-cases.html?stat=num&measure=total_last7&map=pt#a2), Statistics

### 10. Canada: Hospitalized persons positive for COVID-19

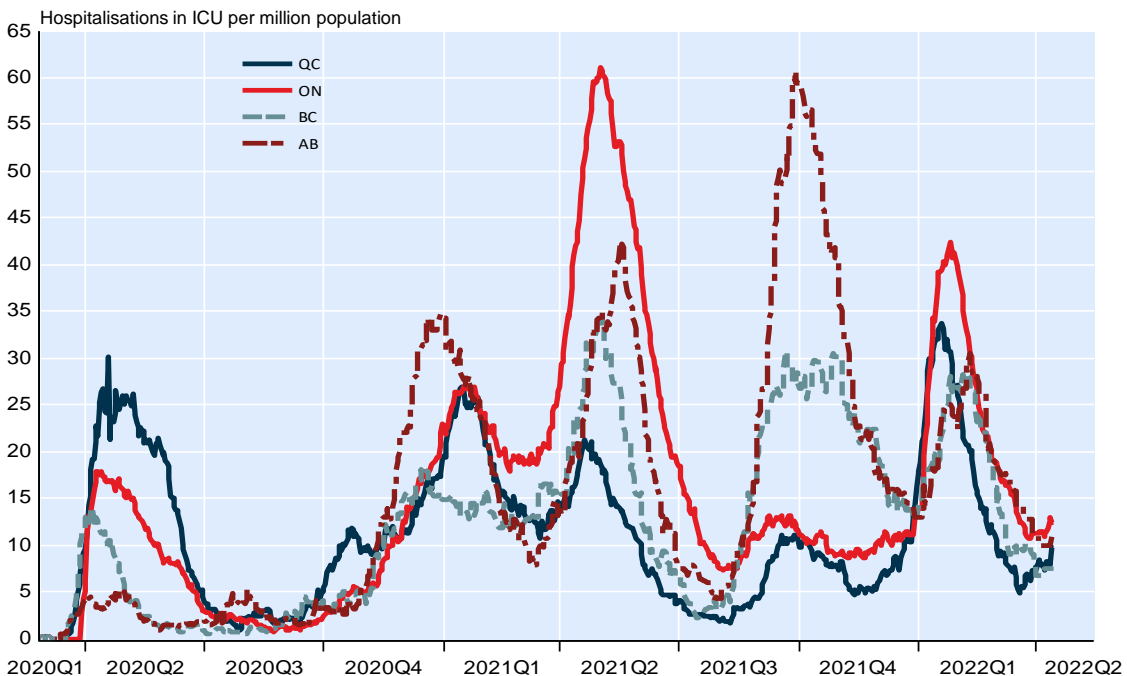
Hospitalisations per million population including intensive care



NBF Economics and Strategy (data via INSPQ, Radio Canada <https://ici.radio-canada.ca/info/2020/coronavirus-covid-19-pandemie-cas-carte-maladie-symptomes-propagation/>)

### 11. Canada: Current hospitalisations in ICU related to COVID-19

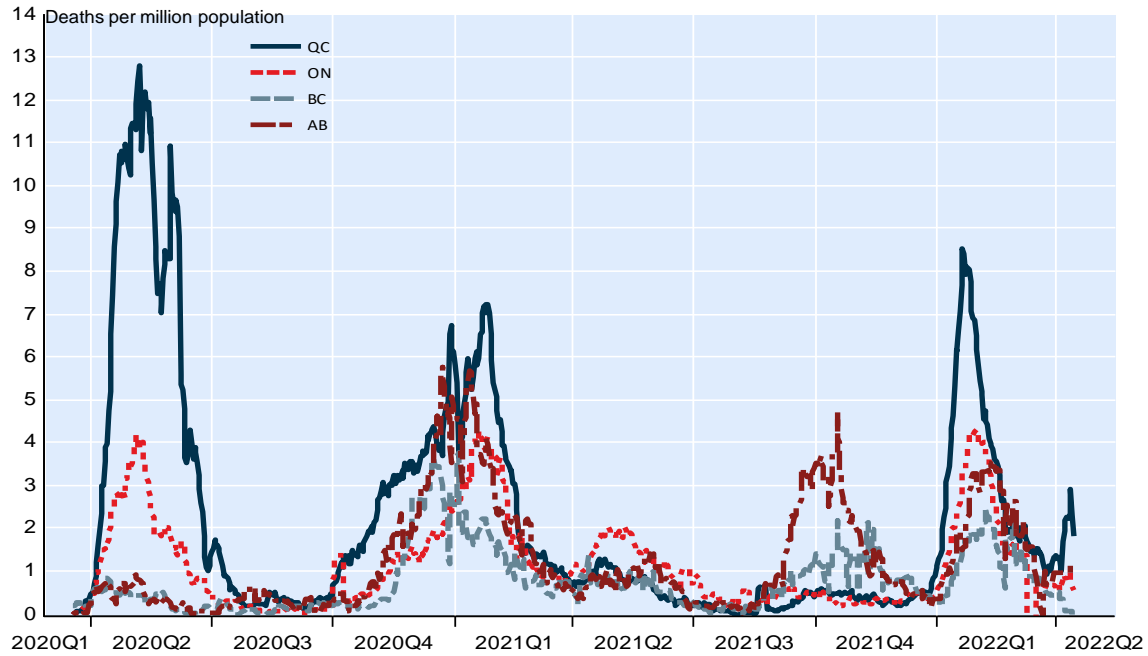
People in intensive care per million population



NBF Economics and Strategy (data via INSPQ, Radio Canada <https://ici.radio-canada.ca/info/2020/coronavirus-covid-19-pandemie-cas-carte-maladie-symptomes-propagation/>)

### 12. Canada: Deaths of people positive to COVID-19

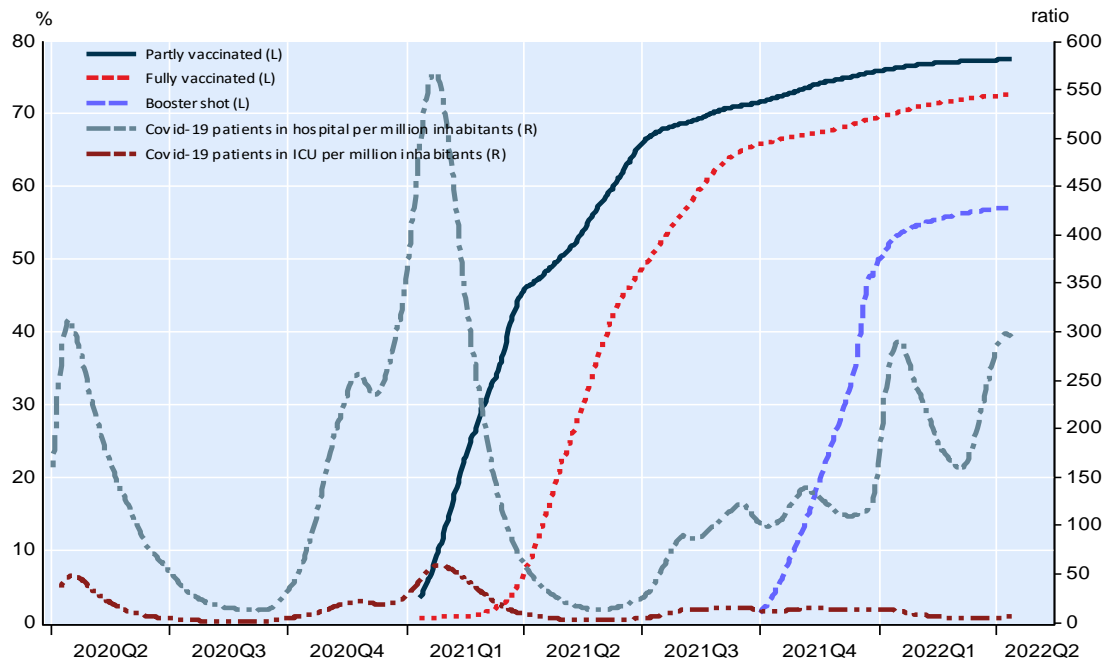
Deaths per million population, 7 day moving average



NBF Economics and Strategy (data via Radio-Canada <https://ici.radio-canada.ca/info/2020/coronavirus-covid-19-pandemie-cas-carte->

### 13. UK: Vaccination, Covid-19 hospitalisations and ICU

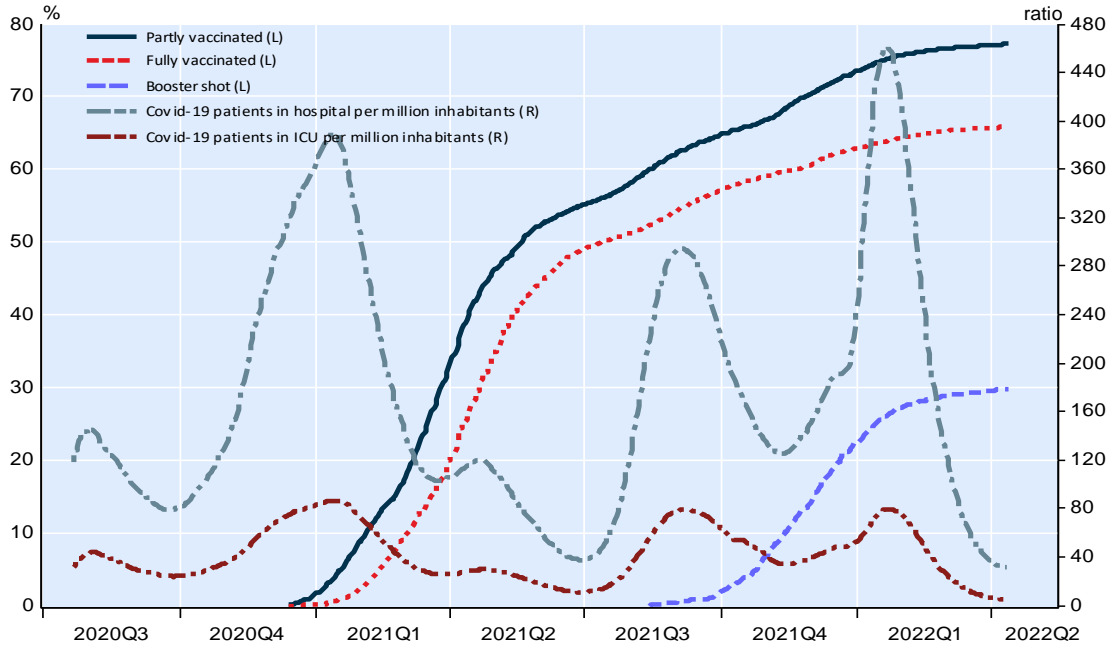
Population vaccinated, current patients in hospital and ICU per million inhabitants, 7-day moving average



NBF Economics and Strategy (<https://ourworldindata.org/covid-vaccinations>)

### 14. US: Vaccination, Covid-19 hospitalisations and ICU

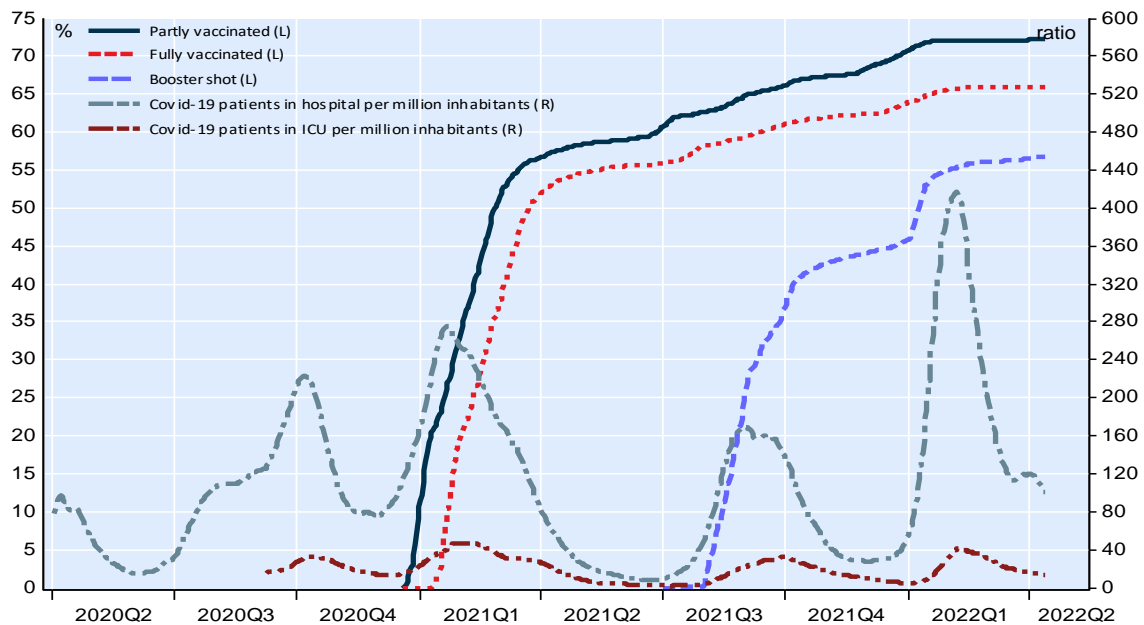
Population vaccinated, current patients in hospital and ICU per million inhabitants, 7-day moving average



NBF Economics and Strategy (<https://ourworldindata.org/covid-vaccinations>)

### 15. Israel: Vaccination, Covid-19 hospitalisations and ICU

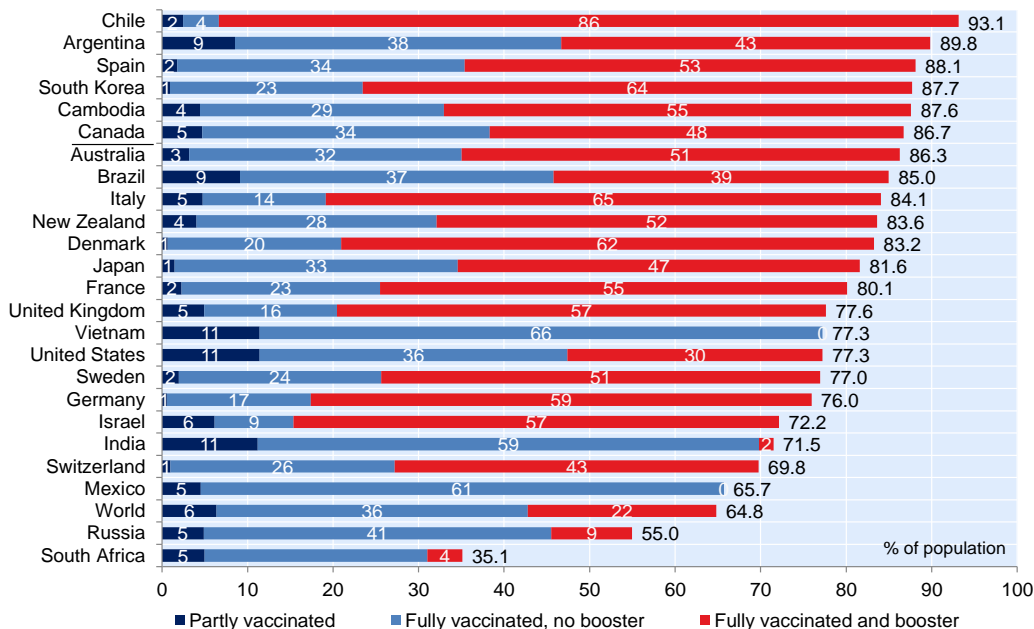
Population vaccinated, current patients in hospital and ICU per million inhabitants, 7-day moving average



NBF Economics and Strategy (<https://ourworldindata.org/covid-vaccinations>)

## 16. World: Perspective on vaccine rollout

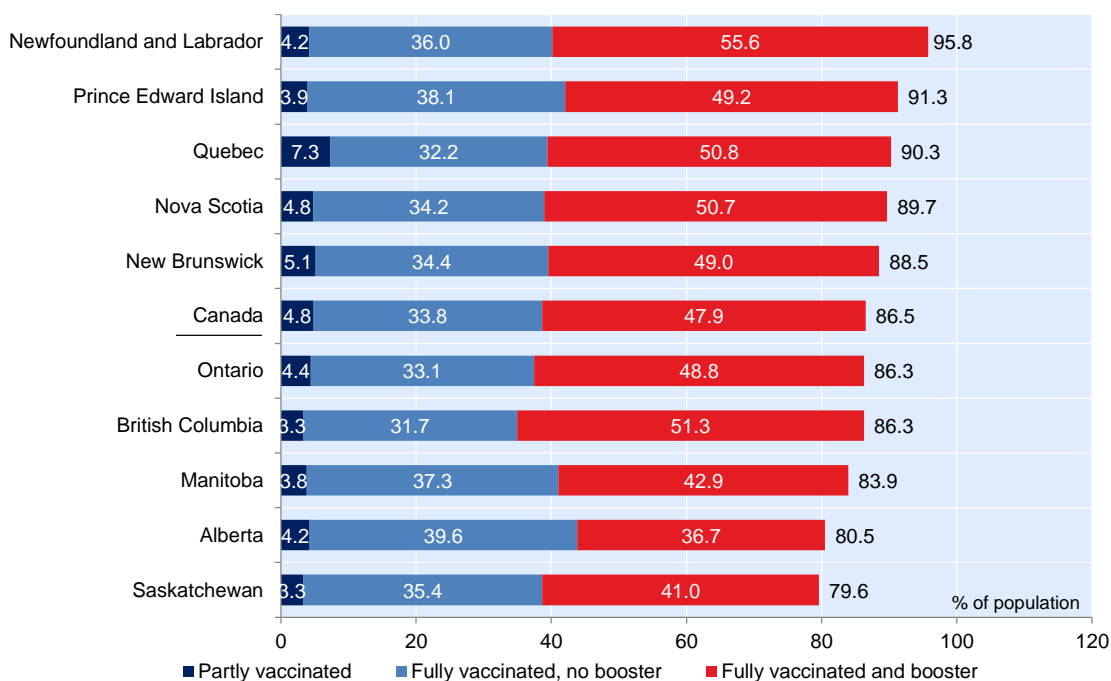
Share of population partly and fully vaccinated against COVID-19



NBF Economics and Strategy (data via <https://ourworldindata.org/covid-vaccinations>)

## 17. Canada: Perspective on vaccine rollout

Share of population partly and fully vaccinated against COVID-19

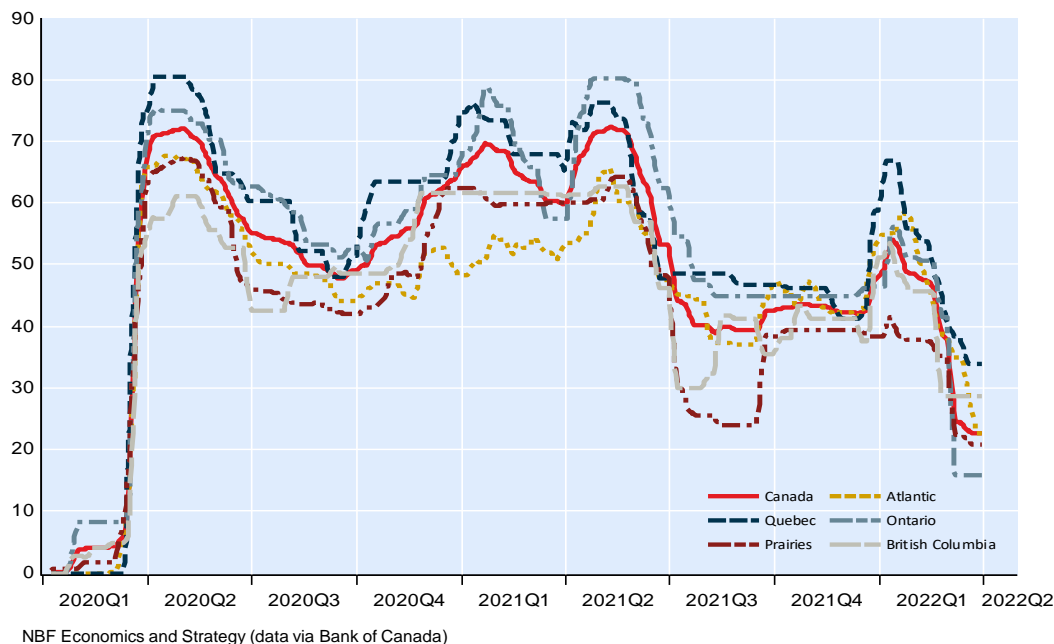


\*Saskatchewan updates data on a monthly basis

NBF Economics and Strategy (data via <https://covid19tracker.ca/vaccinationtracker.html>)

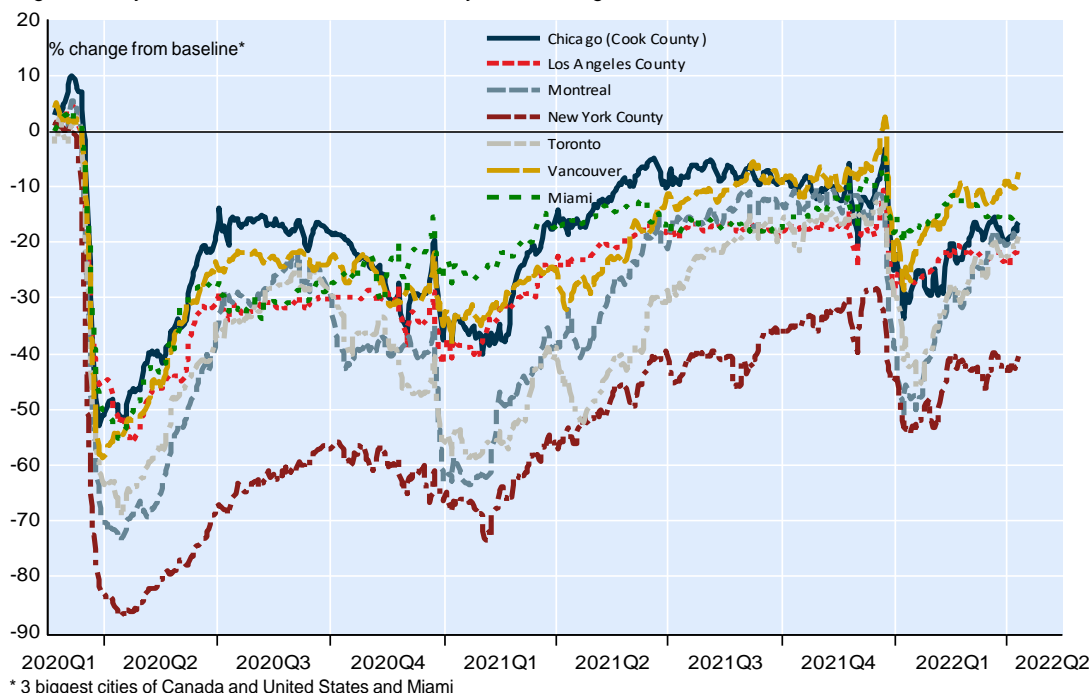
### 18. Canada: Covid-19 stringency index

Stringency of policy related to containment restrictions and public information campaigns, 7-day mov. average



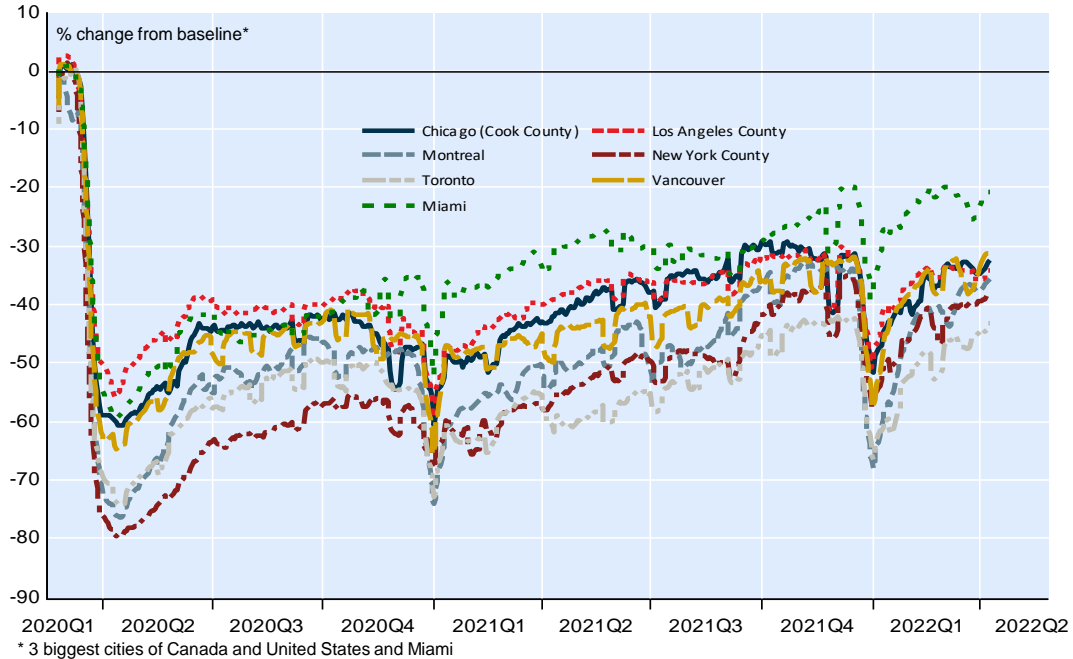
### 19. Canada and United States\*: Back to normal index

Google mobility data for retail & recreation, 7-day mov. average



**20. Canada and United States\*: Back to normal index (2)**

Google mobility data for transit and workplaces, workdays only, 5-day mov. average



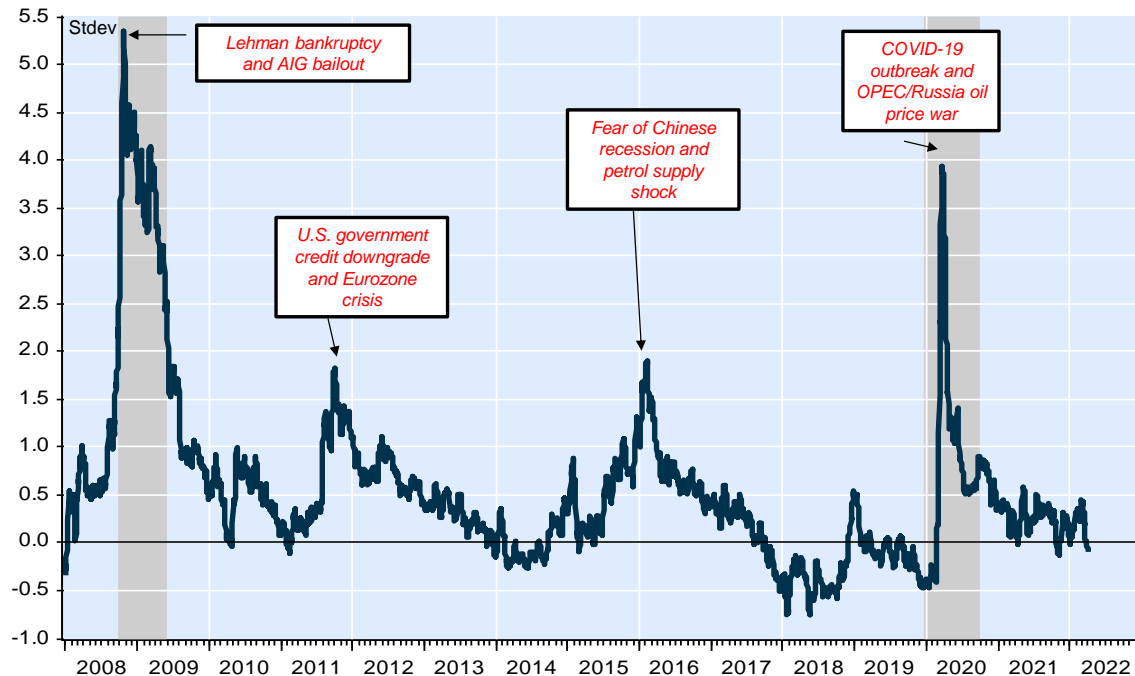
\* 3 biggest cities of Canada and United States and Miami

\*\*The baseline is the median value of the corresponding day of the week during the 5 week period from January 3 to February 6 2020

NBF Economics and Strategy (data via Google)

**21. Canada: Perspective on financial stress**

NBF financial stress index



NBF Economics and Strategy (data via Bloomberg and Refinitiv)

## Economics and Strategy

### Montreal Office

514-879-2529

#### Stéfane Marion

*Chief Economist and Strategist*  
stefane.marion@nbc.ca

#### Kyle Dahms

*Economist*  
kyle.dahms@nbc.ca

#### Alexandra Ducharme

*Economist*  
alexandra.ducharme@nbc.ca

#### Matthieu Arseneau

*Deputy Chief Economist*  
matthieu.arseneau@nbc.ca

#### Daren King

*Economist*  
daren.king@nbc.ca

#### Angelo Katsoras

*Geopolitical Analyst*  
angelo.katsoras@nbc.ca

#### Jocelyn Paquet

*Economist*  
jocelyn.paquet@nbc.ca

### Toronto Office

416-869-8598

#### Warren Lovely

*Chief Rates and Public Sector Strategist*  
warren.lovely@nbc.ca

#### Taylor Schleich

*Rates Strategist*  
taylor.schleich@nbc.ca

### General

This Report was prepared by National Bank Financial, Inc. (NBF), (a Canadian investment dealer, member of IIROC), an indirect wholly owned subsidiary of National Bank of Canada. National Bank of Canada is a public company listed on the Toronto Stock Exchange.

The particulars contained herein were obtained from sources which we believe to be reliable but are not guaranteed by us and may be incomplete and may be subject to change without notice. The information is current as of the date of this document. Neither the author nor NBF assumes any obligation to update the information or advise on further developments relating to the topics or securities discussed. The opinions expressed are based upon the author(s) analysis and interpretation of these particulars and are not to be construed as a solicitation or offer to buy or sell the securities mentioned herein, and nothing in this Report constitutes a representation that any investment strategy or recommendation contained herein is suitable or appropriate to a recipient's individual circumstances. In all cases, investors should conduct their own investigation and analysis of such information before taking or omitting to take any action in relation to securities or markets that are analyzed in this Report. The Report alone is not intended to form the basis for an investment decision, or to replace any due diligence or analytical work required by you in making an investment decision.

This Report is for distribution only under such circumstances as may be permitted by applicable law. This Report is not directed at you if NBF or any affiliate distributing this Report is prohibited or restricted by any legislation or regulation in any jurisdiction from making it available to you. You should satisfy yourself before reading it that NBF is permitted to provide this Report to you under relevant legislation and regulations.

National Bank of Canada Financial Markets is a trade name used by National Bank Financial and National Bank of Canada Financial Inc.

### Canadian Residents

NBF or its affiliates may engage in any trading strategies described herein for their own account or on a discretionary basis on behalf of certain clients and as market conditions change, may amend or change investment strategy including full and complete divestment. The trading interests of NBF and its affiliates may also be contrary to any opinions expressed in this Report.

NBF or its affiliates often act as financial advisor, agent or underwriter for certain issuers mentioned herein and may receive remuneration for its services. As well NBF and its affiliates and/or their officers, directors, representatives, associates, may have a position in the securities mentioned herein and may make purchases and/or sales of these securities from time to time in the open market or otherwise. NBF and its affiliates may make a market in securities mentioned in this Report. This Report may not be independent of the proprietary interests of NBF and its affiliates.

This Report is not considered a research product under Canadian law and regulation, and consequently is not governed by Canadian rules applicable to the publication and distribution of research Reports, including relevant restrictions or disclosures required to be included in research Reports.

## UK Residents

This Report is a marketing document. This Report has not been prepared in accordance with EU legal requirements designed to promote the independence of investment research and it is not subject to any prohibition on dealing ahead of the dissemination of investment research. In respect of the distribution of this Report to UK residents, NBF has approved the contents (including, where necessary, for the purposes of Section 21(1) of the Financial Services and Markets Act 2000). This Report is for information purposes only and does not constitute a personal recommendation, or investment, legal or tax advice. NBF and/or its parent and/or any companies within or affiliates of the National Bank of Canada group and/or any of their directors, officers and employees may have or may have had interests or long or short positions in, and may at any time make purchases and/or sales as principal or agent, or may act or may have acted as market maker in the relevant investments or related investments discussed in this Report, or may act or have acted as investment and/or commercial banker with respect hereto. The value of investments, and the income derived from them, can go down as well as up and you may not get back the amount invested. Past performance is not a guide to future performance. If an investment is denominated in a foreign currency, rates of exchange may have an adverse effect on the value of the investment. Investments which are illiquid may be difficult to sell or realise; it may also be difficult to obtain reliable information about their value or the extent of the risks to which they are exposed. Certain transactions, including those involving futures, swaps, and other derivatives, give rise to substantial risk and are not suitable for all investors. The investments contained in this Report are not available to retail customers and this Report is not for distribution to retail clients (within the meaning of the rules of the Financial Conduct Authority). Persons who are retail clients should not act or rely upon the information in this Report. This Report does not constitute or form part of any offer for sale or subscription of or solicitation of any offer to buy or subscribe for the securities described herein nor shall it or any part of it form the basis of or be relied on in connection with any contract or commitment whatsoever.

This information is only for distribution to Eligible Counterparties and Professional Clients in the United Kingdom within the meaning of the rules of the Financial Conduct Authority. NBF is authorised and regulated by the Financial Conduct Authority and has its registered office at 70 St. Mary Axe, London, EC3A 8BE.

NBF is not authorised by the Prudential Regulation Authority and the Financial Conduct Authority to accept deposits in the United Kingdom.

## U.S. Residents

With respect to the distribution of this report in the United States of America, National Bank of Canada Financial Inc. ("NBCFI") which is regulated by the Financial Industry Regulatory Authority (FINRA) and a member of the Securities Investor Protection Corporation (SIPC), an affiliate of NBF, accepts responsibility for its contents, subject to any terms set out above. To make further inquiry related to this report, or to effect any transaction, United States residents should contact their NBCFI registered representative.

This report is not a research report and is intended for Major U.S. Institutional Investors only.

This report is not subject to U.S. independence and disclosure standards applicable to research reports.

## HK Residents

With respect to the distribution of this report in Hong Kong by NBC Financial Markets Asia Limited ("NBCFMA") which is licensed by the Securities and Futures Commission ("SFC") to conduct Type 1 (dealing in securities) and Type 3 (leveraged foreign exchange trading) regulated activities, the contents of this report are solely for informational purposes. It has not been approved by, reviewed by, verified by or filed with any regulator in Hong Kong. Nothing herein is a recommendation, advice, offer or solicitation to buy or sell a product or service, nor an official confirmation of any transaction. None of the products issuers, NBCFMA or its affiliates or other persons or entities named herein are obliged to notify you of changes to any information and none of the foregoing assume any loss suffered by you in reliance of such information.

The content of this report may contain information about investment products which are not authorized by SFC for offering to the public in Hong Kong and such information will only be available to, those persons who are Professional Investors (as defined in the Securities and Futures Ordinance of Hong Kong ("SFO")). If you are in any doubt as to your status you should consult a financial adviser or contact us. This material is not meant to be marketing materials and is not intended for public distribution. Please note that neither this material nor the product referred to is authorized for sale by SFC. Please refer to product prospectus for full details.

There may be conflicts of interest relating to NBCFMA or its affiliates' businesses. These activities and interests include potential multiple advisory, transactional and financial and other interests in securities and instruments that may be purchased or sold by NBCFMA or its affiliates, or in other investment vehicles which are managed by NBCFMA or its affiliates that may purchase or sell such securities and instruments.

No other entity within the National Bank of Canada group, including National Bank of Canada and National Bank Financial Inc, is licensed or registered with the SFC. Accordingly, such entities and their employees are not permitted and do not intend to: (i) carry on a business in any regulated activity in Hong Kong; (ii) hold themselves out as carrying on a business in any regulated activity in Hong Kong; or (iii) actively market their services to the Hong Kong public.

## Copyright

This Report may not be reproduced in whole or in part, or further distributed or published or referred to in any manner whatsoever, nor may the information, opinions or conclusions contained in it be referred to without in each case the prior express written consent of NBF.