

LOVELL'S
MONTREAL DIRECTORY,
FOR 1891--92.

CONTAINING AN

ALPHABETICAL DIRECTORY OF THE CITIZENS,

A

STREET DIRECTORY,

AN

ADVERTISERS CLASSIFIED BUSINESS DIRECTORY,

AND A

MISCELLANEOUS DIRECTORY.

TO WHICH IS ADDED

Directories of City of St. Cunegonde, Coteau St Louis, Coteau St. Pierre, Cote St. Luc, Cote St. Paul, Cote Visitation, Lachine, Laprairie, Longueuil, Long Point, Maisonneuve, Montreal Junction, Mount Royal Avenue, Mount Royal Vale, Notre Dame de Grace, Notre Dame des Neiges, Outremont, Petit Village Turcot, St. Lambert, Sault au Recollet, St. Louis of Mile End, Town of Cote St. Antoine, Town of St Henry, Verdun and Village Notre Dame des Neiges Ouest

CORRECTED TO 25th JUNE, 1891

Montreal:

PRINTED AND PUBLISHED BY JOHN LOVELL & SON,
ST. NICHOLAS STREET.

OTTAWA RIVER NAVIGATION CO.



Tourists' Steamer Route to Ottawa.

CHARMING SCENERY. PALACE STEAMERS. MEALS SERVED ON BOARD.

Single Fare, \$2.75; Return by boat, \$4; Round Trip tickets, up by rail, return by boat, \$5.15. The Ottawa River has been compared to the beautiful Blue Danube. Return ticket issued direct to Caledonia Springs at Special low rates.

Take 8.05 a.m. Train to connect with Steamer at Lachine for Ottawa. Return Steamer leaves Ottawa at 7.30 a.m. daily, and RUNS THE RAPIDS, reaching Montreal at 6.30 p.m.

CHEAP DAY TRIPS UP TO THE BEAUTIFUL OTTAWA RIVER, TO CARILLON,

or any of the delightful intermediate points. Round Trip from Montreal, \$1.25; Round trips on Saturdays, \$1. the most pleasant and cheapest of day trips. A nice Park at the landing. Ample time to visit the great dam and slides at Carillon. Returning home by the Rapids, Take 8.05 a.m. train for Lachine to connect with steamer

AFTERNOON TRIPS TO ST. ANNES

by train and return by Steamer down Rapids. Take 1.40 p.m. train daily, or G.T.R. 2.15 p.m., C.P.R. 1.30 p.m. trains Saturday. Steamer leaves St. Anne's about 4 p.m. for Montreal. Round trip 80 cents.

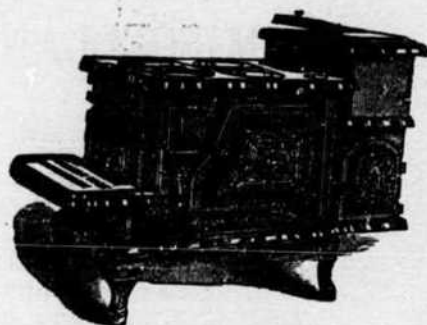
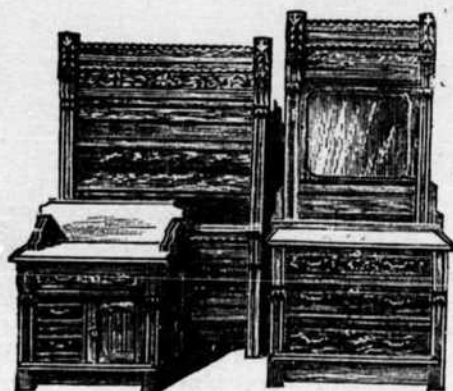
SHOOT THE RAPIDS in the afternoon; take 5 p.m. train for Lachine. Round Trip 50 cents

TICKETS at the ticket office, 184 St. James St., Grand Trunk Ticket Office, 143 St. James St., Railway Depot and principal Hotels.

SHERRINGHAM PARK.—Saloon Steamer "Prince of Wales"

For Charter Apply **HEAD OFFICE, 88 COMMON ST., Canal Basin.**

R. W. SPEPHERD, Jr., Manager.



O. COURTEMANCHE,

1517 & 1519 Notre Dame St., Montreal.

BELL TELEPHONE 1895.

*New and Second-Hand Furniture, Pianos, Stoves, Hardware
and Crockery, &c. Bought and Sold.*

Over \$10,000 Worth of Goods in Stock.

Best Value in the City Guaranteed.

PIANOS TO RENT.

CONTENTS.

	PAGE
Addenda	361
Advertisers Business Classified Directory	17
Alphabetical Directory of Citizens.....	361
Index to Advertisers Names.....	80
Index to Miscellaneous	89
Index to Streets, Avenues, Squares, Terraces, Places and Lanes	85
Miscellaneous Directory of Banks, Benevolent and Religious Societies, Churches, Corporations, Newspapers, Post Office, Railways, Steamers, &c., &c.....	949
Preface	84
Street Directory.....	105

PLACES IN THE NEIGHBORHOOD OF MONTREAL.

City of Ste. Cunegonde.....	853	Mount Royal Vale.....	901
Coteau St. Louis.....	868	Notre Dame de Grâce.....	902
Coteau St. Pierre	874	Notre Dame des Neiges.....	902
Côte St. Luc.....	875	Outremont.....	904
Cote St. Paul.. ..	875	Petit Village Turcot.....	905
Cote Visitation	878	Sault au Recollet.....	906
Lachine.....	879	St. Lambert.....	907
Laprairie.....	889	St. Louis of Mile End.. ..	909
Longueuil.....	892	Town of Côte St. Antoine.....	917
Long Point.....	897	Town of St. Henry.....	922
Maisonneuve.....	899	Verdun	946
Montreal Junction.....	901	Village Notre Dame des Neiges Ouest....	946

ADDENDA.

See Page 361.

PREFACE.

WITH the design of maintaining the utility and efficiency of **LOVELL'S MONTREAL DIRECTORY**, and of adapting its size and bulk to the convenience of those consulting it, the Publishers continue the printing of the Alphabetical portion in a small but clear type, giving greater prominence than hitherto, by the use of a bold Gothic letter, to the names of Advertisers.

It need hardly be said that the same labor and effort to secure accuracy which the Publishers have always put forth have not been withheld in the preparation of the present edition. The wish of the Publishers is to give the latest and most correct information, and with that end in view no expense or labor is spared on the book ; but it has to be taken into account that the whole of the work—compilation, printing and binding—is done within a period of eight weeks, so that some allowance should be made for errors.

Some idea of the labor involved in the compilation of the work, and of the difficulties in the way of securing the accuracy of information at which we aim, may be drawn from the fact that in this year's issue, in the City proper, by actual count, 20,852 new names have been added, 17,522 names taken out, 12,458 alterations made in other names, and 17,651 names remain unchanged, giving a total of 68,483 names (exclusive of the outskirts), for the City proper. This shows an increase as compared with last year of 3,330 new names, an addition of about 10,000 to our population, and deducting 3350 names as having been duplicated, we would estimate the population to be 216,000.

In the Outskirts we find that 3,049 new names have been added, 2,795 names taken out, 2,133 alterations made in other names, and 3,101 names remain unchanged, giving a total of 11,078 names. We would estimate the population of the Outskirts to be 44,000.

As usual, the book is divided into four parts, viz., (1) The Advertisers' Classified Directory ; (2) The Street Directory ; (3) The Alphabetical Directory ; (4) The Miscellaneous Information, the last has been entirely remodeled and improved in many respects.

This book is respectfully dedicated to its generous patrons—**THE PUBLIC.**

MONTREAL, June 27, 1891.

Entered according to Act of Parliament of Canada, for the year one thousand eight hundred and ninety-one, by **JOHN LOVELL & SON**, in the office of the Minister of Agriculture.