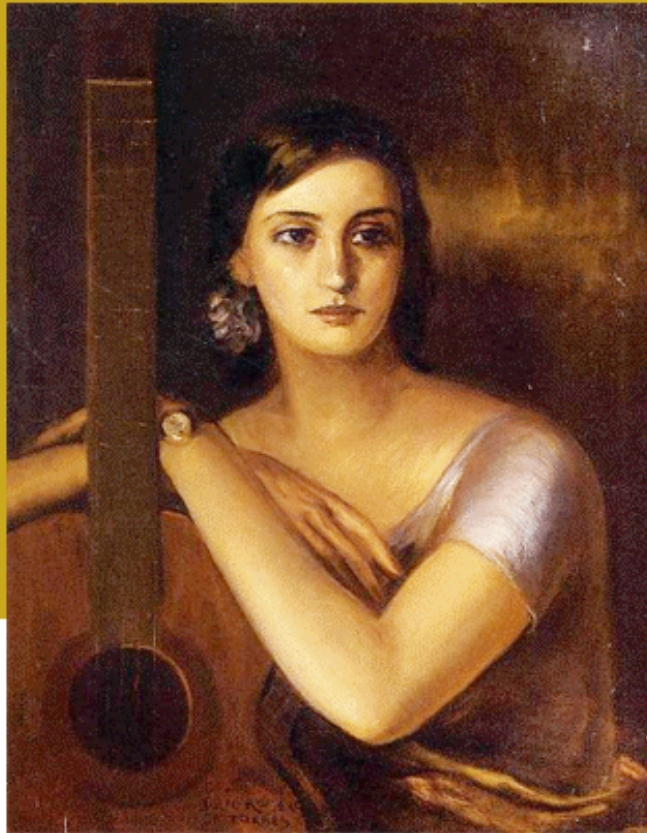


# Roque Carbajo



## Fuchsia

*Solo guitar*

Carlam musique CM65





# Roque Carbajo

## Fuschia

---

**Gravure / Engraving** : Roque Carbajo

© 2013 Carlam musique ® 1984

Dépôt légal - Bibliothèque et Archives nationales du Québec, Bibliothèque et Archives Canada

**ISMN : 979-0-706101-87-3**

Imprimé au Québec

# Femina XX. Fuschia

Roque Carbajo

Tout plein de souvenirs  $\text{♩} = 50$

VII

*mf dolce*

4

7

*sfz* *mf espressivo*

X

10

13

VII

*mp*

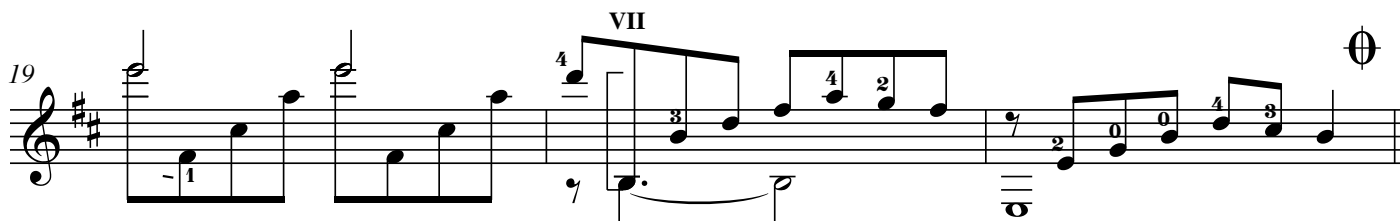
*a tempo*

16

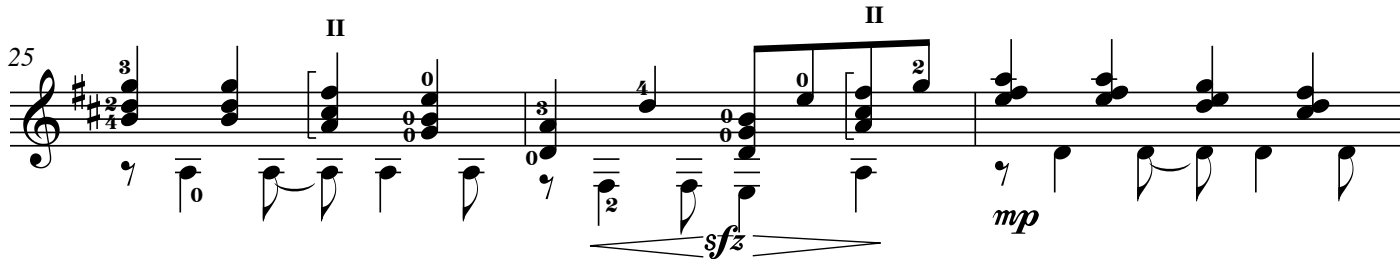
VII

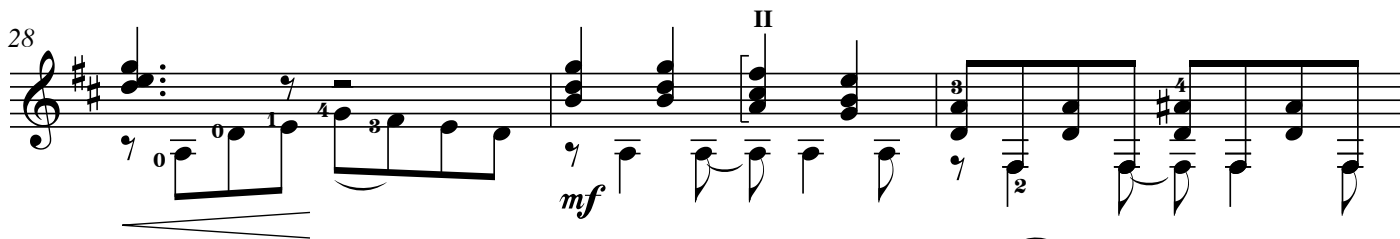
*rit.*

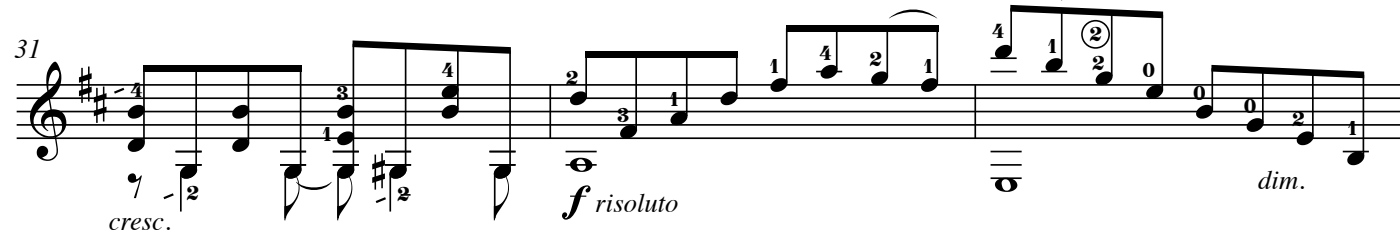
*mf* ⑤ ④

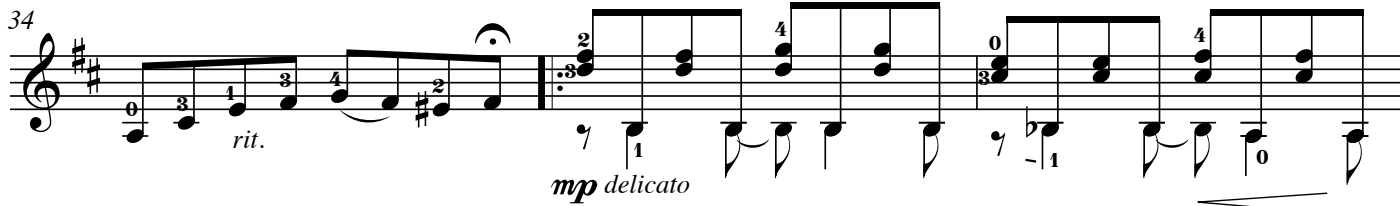
19 

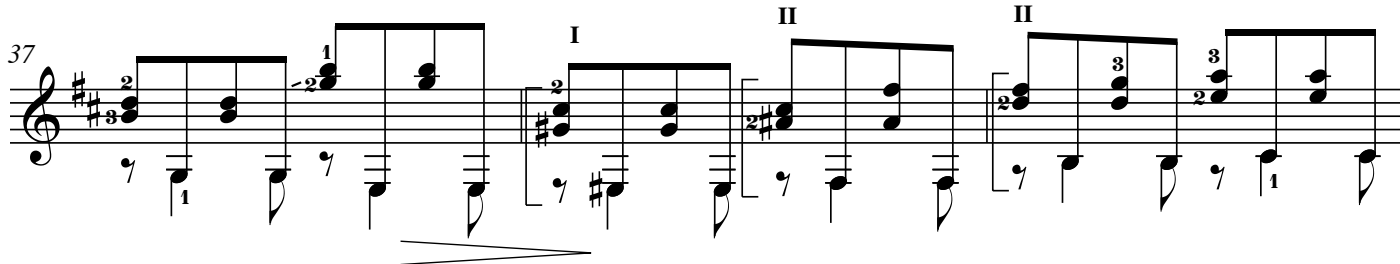
22 *meno mosso*  
*rit.* 

25 

28 

31 *cresc.* 

34 *rit.* 

37 

40

*cresc.*

43

*dim.* *rit.*

*D.C. al  $\text{\textcircled{C}}$  e Coda*

*Coda*

*mp* *h.12* *dim.* *h.12* *rit.*

*h.12* *p deciso*

# Femina

## XX. Fuschia

Roque Carbajo

First system of guitar tablature. It consists of three staves labeled T, A, and B. The T staff has a 2/4 time signature and a key signature of one flat. The A staff has a 2/4 time signature. The B staff has a 2/4 time signature. The music is written in a 12-string style with six strings per side. The first measure has a 7 on the T staff and a 2 on the B staff. The second measure has a 7 on the T staff and a 7 on the A staff. The third measure has a 7 on the T staff and a 11 on the A staff. The fourth measure has a 7 on the T staff and a 9 on the A staff. The fifth measure has a 7 on the T staff and an 8 on the A staff. The sixth measure has a 7 on the T staff and a 9 on the A staff. The seventh measure has a 7 on the T staff and a 7 on the A staff. The eighth measure has a 10 on the T staff and an 8 on the A staff. The ninth measure has an 8 on the T staff and a 7 on the A staff. The tenth measure has a 5 on the T staff and a 7 on the A staff. The eleventh measure has a 7 on the T staff and a 0 on the A staff. The twelfth measure has a 7 on the T staff and a 6 on the A staff. The thirteenth measure has a 7 on the T staff and a 7 on the A staff. The fourteenth measure has a 0 on the T staff and a 7 on the A staff. The fifteenth measure has a 7 on the T staff and a 5 on the A staff. The sixteenth measure has a 0 on the T staff and a 0 on the A staff.

Second system of guitar tablature. It consists of three staves. The first measure has a 7 on the top staff and a 7 on the middle staff. The second measure has a 10 on the top staff and a 9 on the middle staff. The third measure has a 9 on the top staff and a 7 on the middle staff. The fourth measure has a 10 on the top staff and an 8 on the middle staff. The fifth measure has an 8 on the top staff and a 7 on the middle staff. The sixth measure has a 0 on the top staff and a 4 on the middle staff. The seventh measure has a 2 on the top staff and a 0 on the middle staff. The eighth measure has a 0 on the top staff and a 3 on the middle staff. The ninth measure has a 2 on the top staff and a 2 on the middle staff. The tenth measure has a 3 on the top staff and a 0 on the middle staff. The eleventh measure has a 3 on the top staff and a 2 on the middle staff. The twelfth measure has a 5 on the top staff and a 3 on the middle staff. The thirteenth measure has a 2 on the top staff and a 2 on the middle staff. The fourteenth measure has a 0 on the top staff and a 0 on the middle staff.

Third system of guitar tablature. It consists of three staves. The first measure has a 2 on the top staff and a 0 on the middle staff. The second measure has a 0 on the top staff and a 2 on the middle staff. The third measure has a 4 on the top staff and a 2 on the middle staff. The fourth measure has a 2 on the top staff and a 3 on the middle staff. The fifth measure has a 3 on the top staff and a 2 on the middle staff. The sixth measure has a 3 on the top staff and a 3 on the middle staff. The seventh measure has a 0 on the top staff and a 11 on the middle staff. The eighth measure has a 10 on the top staff and a 10 on the middle staff. The ninth measure has a 12 on the top staff and a 12 on the middle staff. The tenth measure has a 14 on the top staff and a 14 on the middle staff. The eleventh measure has a 12 on the top staff and a 12 on the middle staff. The twelfth measure has a 14 on the top staff and a 14 on the middle staff. The thirteenth measure has a 12 on the top staff and a 12 on the middle staff. The fourteenth measure has a 10 on the top staff and a 10 on the middle staff. The fifteenth measure has a 12 on the top staff and a 12 on the middle staff. The sixteenth measure has a 10 on the top staff and a 10 on the middle staff.

Fourth system of guitar tablature. It consists of three staves. The first measure has a 12 on the top staff and a 10 on the middle staff. The second measure has a 12 on the top staff and a 10 on the middle staff. The third measure has a 12 on the top staff and a 10 on the middle staff. The fourth measure has a 12 on the top staff and a 10 on the middle staff. The fifth measure has a 10 on the top staff and a 9 on the middle staff. The sixth measure has a 9 on the top staff and a 9 on the middle staff. The seventh measure has a 10 on the top staff and a 9 on the middle staff. The eighth measure has a 9 on the top staff and a 9 on the middle staff. The ninth measure has a 8 on the top staff and a 8 on the middle staff. The tenth measure has a 8 on the top staff and a 8 on the middle staff. The eleventh measure has a 10 on the top staff and a 10 on the middle staff. The twelfth measure has a 10 on the top staff and a 10 on the middle staff. The thirteenth measure has a 10 on the top staff and a 10 on the middle staff. The fourteenth measure has a 10 on the top staff and a 10 on the middle staff. The fifteenth measure has a 10 on the top staff and a 10 on the middle staff. The sixteenth measure has a 10 on the top staff and a 10 on the middle staff.

Fifth system of guitar tablature. It consists of three staves. The first measure has a 10 on the top staff and a 7 on the middle staff. The second measure has an 8 on the top staff and a 8 on the middle staff. The third measure has a 10 on the top staff and a 7 on the middle staff. The fourth measure has an 8 on the top staff and a 7 on the middle staff. The fifth measure has a 0 on the top staff and a 0 on the middle staff. The sixth measure has a 0 on the top staff and a 0 on the middle staff. The seventh measure has a 0 on the top staff and a 4 on the middle staff. The eighth measure has a 2 on the top staff and a 2 on the middle staff. The ninth measure has a 0 on the top staff and a 0 on the middle staff. The tenth measure has a 4 on the top staff and a 4 on the middle staff. The eleventh measure has a 2 on the top staff and a 2 on the middle staff. The twelfth measure has a 0 on the top staff and a 0 on the middle staff. The thirteenth measure has a 2 on the top staff and a 0 on the middle staff. The fourteenth measure has a 0 on the top staff and a 3 on the middle staff. The fifteenth measure has a 2 on the top staff and a 2 on the middle staff. The sixteenth measure has a 0 on the top staff and a 0 on the middle staff.

Sixth system of guitar tablature. It consists of three staves. The first measure has a 10 on the top staff and a 7 on the middle staff. The second measure has an 8 on the top staff and a 8 on the middle staff. The third measure has a 10 on the top staff and a 7 on the middle staff. The fourth measure has an 8 on the top staff and a 7 on the middle staff. The fifth measure has a 0 on the top staff and a 0 on the middle staff. The sixth measure has a 0 on the top staff and a 0 on the middle staff. The seventh measure has a 0 on the top staff and a 4 on the middle staff. The eighth measure has a 2 on the top staff and a 2 on the middle staff. The ninth measure has a 0 on the top staff and a 0 on the middle staff. The tenth measure has a 4 on the top staff and a 4 on the middle staff. The eleventh measure has a 2 on the top staff and a 2 on the middle staff. The twelfth measure has a 0 on the top staff and a 0 on the middle staff. The thirteenth measure has a 2 on the top staff and a 0 on the middle staff. The fourteenth measure has a 0 on the top staff and a 3 on the middle staff. The fifteenth measure has a 2 on the top staff and a 2 on the middle staff. The sixteenth measure has a 0 on the top staff and a 0 on the middle staff.

The image displays six systems of guitar tablature. Each system consists of a guitar staff (top), a bass staff (middle), and a fretboard diagram (bottom). The tablature includes various techniques such as bends, slides, and double stops. The fretboard diagrams show the positions of the strings and frets for each note.

**System 1:** Guitar staff: 7 9 8 7 10 9 10 12 | 13 11 13 11 | 12 12 12 10. Bass staff: 10 12 10 12 | 11 12 10 11. Fretboard diagrams show bends on strings 1-4 and 2-5.

**System 2:** Guitar staff: 12 10 12 10 | 10 7 7 10 8 7 | 0 0 3 2 0. Bass staff: 9 11 9 11 | 9 7 | 2 0 3 2 0. Fretboard diagrams show bends on strings 1-4 and 2-5.

**System 3:** Guitar staff: 0 2 0 0 3 2 0 2 | 5 5 5 5 5 5 | 0 0 2 2 4 4 0. Bass staff: 9 9 7 6 7 | 0 0 2 2 4 4 0. Fretboard diagrams show bends on strings 1-4 and 2-5.

**System 4:** Guitar staff: 3 3 3 2 0 | 2 3 0 0 2 3 | 5 5 5 5 5 5 | 3 2 3 2 3. Bass staff: 4 4 5 0 0 | 0 0 0 0 0 0 | 9 9 7 6 6 6 | 0 0 0 0 0 0. Fretboard diagrams show bends on strings 1-4 and 2-5.

**System 5:** Guitar staff: 3 3 3 2 0 | 3 3 2 0 | 2 2 3 3. Bass staff: 7 0 2 5 4 2 0 | 4 4 2 0 | 0 0 0 0 | 0 0 0 0. Fretboard diagrams show bends on strings 1-4 and 2-5.

**System 6:** Guitar staff: 4 4 4 5 | 3 2 3 2 5 3 2 | 10 7 8 0 | 0 0 2 2. Bass staff: 0 0 2 4 | 0 4 2 3 | 0 0 0 0 | 0 0 2 2. Fretboard diagrams show bends on strings 1-4 and 2-5.

*D.C. al Fine e Coda*

*Coda*

*h.12*

Le travail musical et pédagogique de Roque Carbajo  
est disponible chez Carlam musique.

[www.roquecarbajo.com](http://www.roquecarbajo.com)

The musical and educational work of Roque Carbajo  
is available at Carlam musique.

[www.roquecarbajo.com](http://www.roquecarbajo.com)

El trabajo musical y pedagógico de Roque Carbajo  
está disponible en Carlam musique.

[www.roquecarbajo.com](http://www.roquecarbajo.com)