



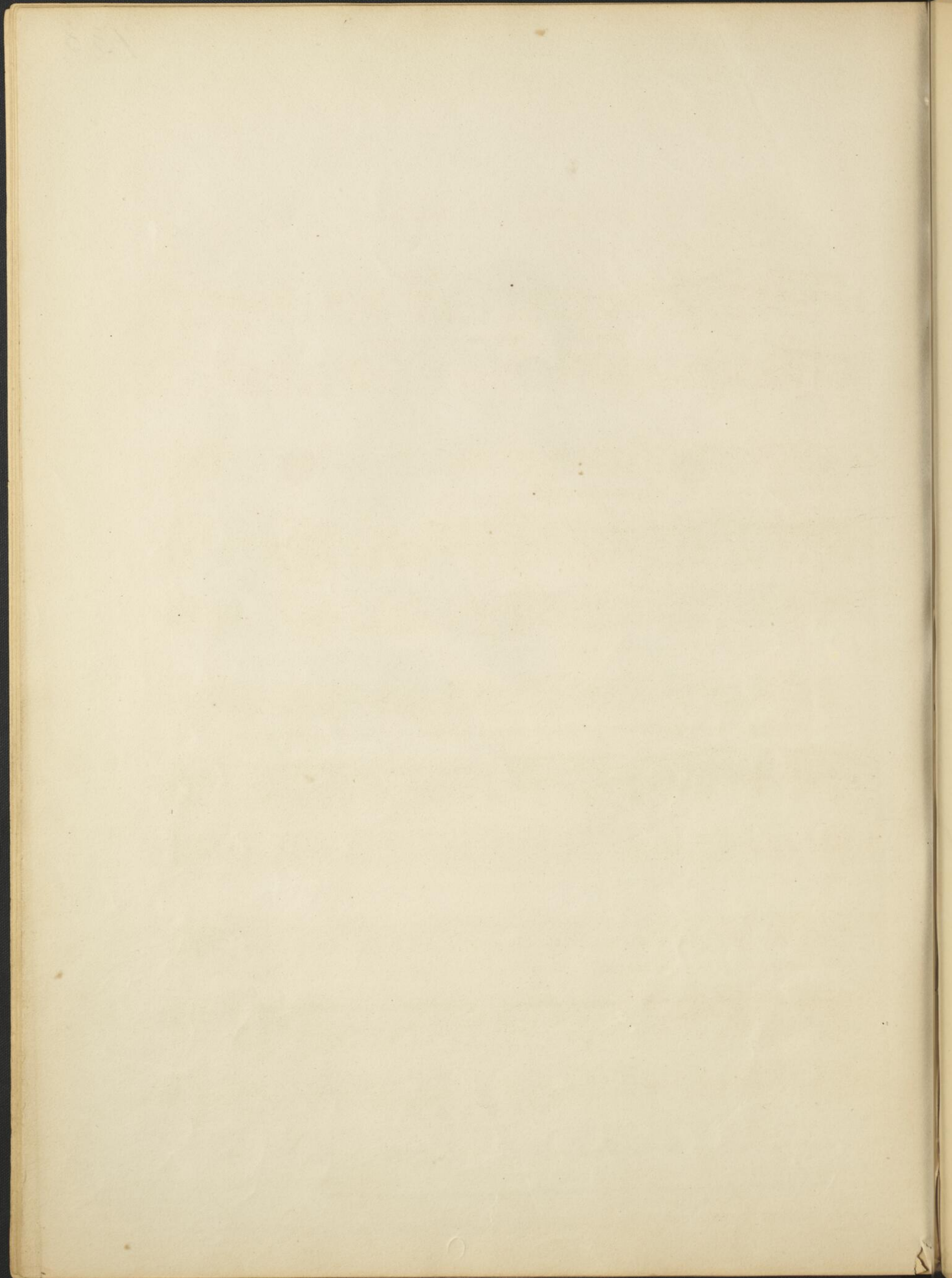
KATE O'SHANE,
 BALLAD,
 BY
 GEORGE LINLEY.

Printed at the Hall

W. & A. Nichol, 25, Princes St., Edinburgh.

Pr. 2/-

LONDON, JEFFERYS & CO. 21, SOHO SQUARE



KATE O' SHANE.

Music & Words by G. LINLEY.

Andantino semplice.

PIANO-
FORTE.

The piano introduction consists of two staves. The upper staff is in treble clef with a key signature of three sharps (F#, C#, G#) and a 3/4 time signature. The lower staff is in bass clef with the same key signature and time signature. The music is marked 'Andantino semplice' and includes dynamic markings 'PIANO-' and 'FORTE.'.

The cold winds of Au-tumn, Wail

ritard:

The first line of lyrics is 'The cold winds of Au-tumn, Wail'. The musical notation includes a vocal line and a piano accompaniment. A 'ritard:' marking is placed above the piano accompaniment.

mournful-ly here; The leaves, round me fall-ing, Are fa-ded and

The second line of lyrics is 'mournful-ly here; The leaves, round me fall-ing, Are fa-ded and'. The musical notation continues with vocal and piano parts.

sere; But chill tho' the breeze be, And threat'ning the storm, My

The third line of lyrics is 'sere; But chill tho' the breeze be, And threat'ning the storm, My'. The musical notation concludes the page with vocal and piano parts.

3

heart, full of fond-ness, Beats kind-ly and warm. Oh!

Dennis, dear, come back to me, I count the hours, a-way from

più lento. thee; *slent^{do}* Re-turn, O never part a-gain *ad lib:* From thy own darling, Kate O'

Shane

ritard:

2nd VERSE.

'Twas here, we last par - - ted, 'Twas here, we first

met, And ne'er, has he caus'd me, One tear of re - -


-gret. Tho' sea - sons may al - - ter, Their change I de - -

-fy, My heart's one glad summer, When Den - nis is

by Oh! Den-nis, dear, come back to me, I count the



hours, a-way from thee. Re-turn, O ne-ver part a- *più lento.*



-gain, From thy own dar-ling, Kate O' Shane *slent^{do}* *ad lib:*



ritard:



101

Faint, illegible text, possibly bleed-through from the reverse side of the page. The text is arranged in several horizontal lines across the page.