

# PARC NATIONAL DE LA POINTE-TAILLON

DISCOVERY GUIDE

# WELCOME TO THE PARK



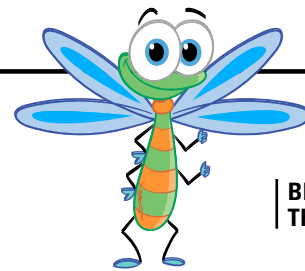
## Lac Saint-Jean, beaches, cycling and...islands!

With its kilometres of sandy shores, a 45-kilometer bike path and primitive campsites on the shores of Lac Saint-Jean and Rivière Péribonka, this large peninsula is a slice of pure paradise! It offers great potential for the discovery and observation of plant and animal life, with 546 plant species, 139 bird species, including the magnificent sandhill crane, a large beaver population and a moose herd.

The park continues to enhance new areas for visitors. Opening in 2021, the Camp-de-Touage–Les-Îles sector is a much anticipated addition to the park's camping spaces, with 80 full-service sites accessible by car and RV.

Welcome, and enjoy your visit!

Find out more at [sepaq.com/pointetaillon](http://sepaq.com/pointetaillon)



**BELLA  
THE DRAGONFLY**

### THE DRAGONFLY, THE PARK'S ANIMAL INSIGNIA

Fragile, floating, graceful beauty ... and dreaded predator! Many adjectives come to mind for describing this small, lively insect with amazing agility. This is an unusual species of dragonfly, seen mainly in the park's peat bogs in early summer. When it was identified in the park, the species had never been mentioned before in the Saguenay–Lac-Saint-Jean region.

ANNUAL QUÉBEC  
NATIONAL PARKS  
CARD

Québec's national parks offer a one-of-a-kind experience. Explore this exceptional world of nature with the Annual Québec National Parks Card, featuring:

- Unlimited access to ALL national parks for 12 full months
- Many exclusive benefits, including a free night of camping

Details at [sepaq.com/parkscard](http://sepaq.com/parkscard)

# MUST-DOS



A

## SWIMMING AND OTHER WATER SPORTS

Lac Saint-Jean is a true inland sea, whose water warms up quickly in the summer sun. The long, sandy, multicolored beaches invite you to relax. There is a big well-equipped beach that includes a supervised area. It offers free chairs and umbrellas, a children's playground and boat rental (canoe, pedal boat, kayak, stand up paddle boards).



B

## CYCLING

Forty-five km of bike paths go all around the peninsula along Lac Saint-Jean and Rivière Péribonka. Easy and accessible to everyone, they cut through beaver and moose habitat.

Along the way, you'll find rest stops and signs of wildlife, as well as information about the fauna, flora and human history of Pointe Taillon. Bicycles are available at the park rental center.



C

## WILDLIFE WATCHING

Keep your eyes peeled!

Watch for discreet signs of many animals. You never know when you could encounter a beaver or moose. For the best odds of spotting any of these animals, be there at dawn or dusk.



D

## CAMPING AND CABIN ACCOMMODATIONS

The campsites are true oases, where you can enjoy the sandy beaches, the warm water of the lake and the peaceful setting. Primitive campsites are accessible via the bike path along Lac Saint-Jean, and others, along the banks of Rivière Péribonka, are accessible via the Péribonka water shuttle. New semi-serviced or 2-service campsites are now available at the Camp-de-Touage campground in Saint-Gédéon.

You can simplify your life with a ready-to-camp site: Twenty traditional or Étoile tents offer all the comfort you need on two sites that you can reach by bike or car. Another very comfortable option is the new fully-equipped Écho cabin. All of these options offer privileged access to Lac Saint-Jean.



**NEW SECTOR  
NEW OFFERING**



Download via  
Avenza Maps

**A to G**

SEE PAGE 16 FOR THE ACCOMMODATION LIST, IDENTIFIED ON THIS MAP.

|  |                                   |  |                        |
|--|-----------------------------------|--|------------------------|
|  | Registration centre / Information |  | Telephone              |
|  | Playground                        |  | Washroom               |
|  | Picnic area                       |  | Observation tower      |
|  | Camping / Ready-to-camp           |  | Lifeguard on duty      |
|  | Rustic camping                    |  | First aid              |
|  | Cabin                             |  | Suggested kayak route  |
|  | Rental                            |  | Bike path              |
|  | Marina / Landing                  |  | Boat shuttle           |
|  | Rest stops                        |  | Road network           |
|  | Food services                     |  | Dogs allowed location  |
|  | Parking lot                       |  | National park boundary |
|  | No dog allowed                    |  | Dog allowed            |



Pour l'information dans le cadre du Camp-de-Touage-Les-Iles

L'information change l'information tout le temps

Cette carte est une reproduction transformée de la Banque de Données de Cartes topographiques à l'échelle 1:50,000. Source: Ministère de l'Environnement et du Patrimoine © Gouvernement du Québec



# DISCOVER OUR TRAILS

| SITES TO DISCOVER  | LENGTH AND DURATION (HOURS)* |     | LEVEL OF DIFFICULTY* | STARTING POINT                |
|--|------------------------------|-----|----------------------|-------------------------------|
| <b>Tour of the park**</b> – Pointe Taillon is a peninsula and is therefore surrounded by water. On one side is Lac Saint-Jean and on the other is Rivière Péribonka. Since most of the trail is right by the water, you can stop and take a break at various rest areas. There are not many hills.                               | 45 km loop                   | 5   | <b>D</b>             | Discovery and Visitors Centre |
| <b>Pointe Chevrette</b> – This is where one of the last residents of Pointe-Taillon lived. Mr. Chevrette was mandated to reforest the lands that had been left fallow after the lake level was raised and the settlers left. There is a rest area here with a shelter, a campsite, and the dock for the Péribonka water shuttle. | 40 km round trip             | 4.5 | <b>D</b>             |                               |
| <b>The lighthouse</b> – This is the site of an old navigation beacon that was used in the timber floating era. The lighthouse is no longer there but it's a beautiful place to stop. (The water is shallow and warm ...)   | 20 km round trip             | 2.5 | <b>I</b>             |                               |
| <b>The Véloroute and the delta crossing</b> – The Véloroute des Bleuets circles Lac Saint-Jean and goes along the park's cycling paths. In both directions visitors will go across the big peat bog, travel over the rolling dunes of the delta and ride beside Lac Saint-Jean.  | 15 km one way                | 1.5 | <b>F</b>             | Northern gatehouse or river   |

\* The durations and difficulty levels mentioned are indicative and refer to the summer season.

\*\* The majority of cyclists do not do the whole tour of the park. Depending on amount of time you have, you can ride part of the cycling path and come back the same way. Remember to bring water!

**F** : Easy      **I** : Moderate      **D** : Difficult



Please note that dogs will be allowed in certain areas of the future Camp-de-Touage sector, currently under development.



## Free of charge!

Admission and equipment loan offered to children 17 and under.

Offer varies from one establishment to another. First come, first served.



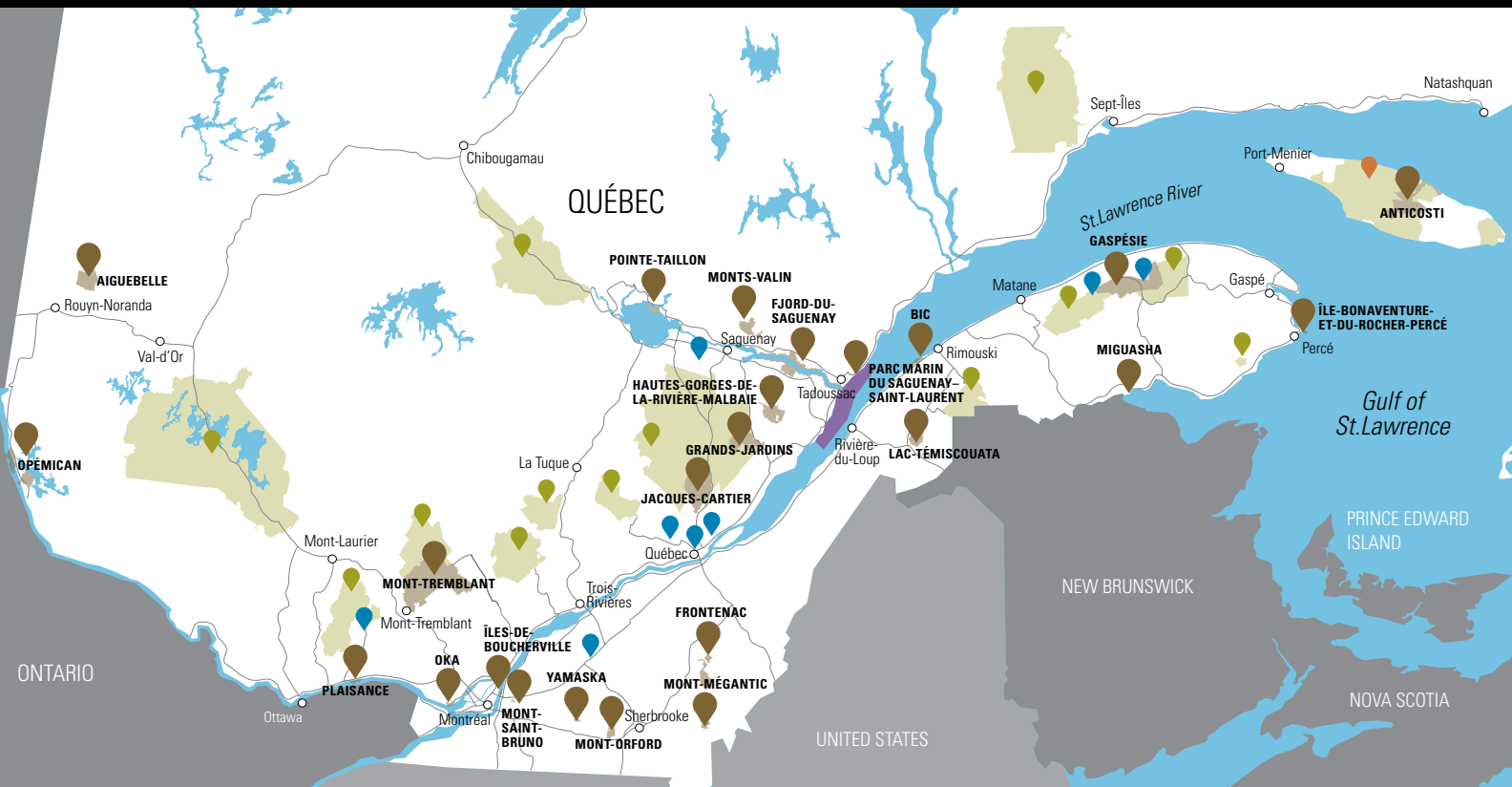
## Our favourite offers at the park

- Supervised beach
- Family nature rally
- Nearly 50 kilometers of bike path (Pointe-Taillon, Les-Amicaux and Camp-de-Touage–Les-Îles sectors)

# THE LARGEST NATURE AND OUTDOOR NETWORK IN QUÉBEC

Sépaq has the privilege of developing territories of incredible richness. Among them, 24 national parks stand out as unique. These are protected areas that belong to all Quebecers and that provide lasting memories for visitors who proudly make such exceptional destinations their own.

Discover all our destinations at [sepaq.com](http://sepaq.com)



📍 NATIONAL PARKS | 
 🌿 WILDLIFE RESERVES | 
 🏞️ TOURIST ESTABLISHMENTS | 
 📍 SÉPAQ ANTICOSTI

## QUÉBEC NATIONAL PARKS DAY September 12, 2020

FREE ADMISSION

## SÉPAQ WINTER DAY JANUARY 30, 2021

FREE ADMISSION



**FREE\***  
reusable bag  
with an in-store  
purchase of  
**\$75 or more.**

The reusable bag is made of natural wood fibre, a biodegradable and recyclable material.

\*Value of \$7.99. Eligible on all purchases of \$75 or more after applicable rebates, discounts, and promotions and before applicable taxes. Exclusions: wood and convenience store products.

\*Valid until December 31, 2020. Limited quantities available.

# DISCOVERY TIME



## EQUIPMENT RENTAL

| EQUIPMENT                                      |                              |
|--|------------------------------|
| Adult bicycle                                  | Solo recreational kayak      |
| Vélo pour enfant (17 ans et moins) – familles  | Tandem recreational kayak    |
| Children’s bicycle, ages 17 and under – groups | Solo sea kayak               |
| Children’s bike trailer                        | Tandem sea kayak             |
| Tandem or electric bicycle                     | Stand up paddle board (SUP)  |
| 2-seat pedal boat                              | Beach or cycling accessories |
| Canoe  |                              |

50% off morning boat rentals for guests with accommodations.

## ACCOMMODATIONS

### Don't forget!

Primitive campsites are not accessible by car. They can be reached by bicycle, on foot or by boat. A baggage trailer is available free of charge. Drinking water is only available at the Discovery and Visitors Centre and the rental centre. Plan to bring enough water for your excursions and for your needs at the campsites.

**CAMPING  
PRIMITIVE  
SEMI-SERVICED  
2-SERVICE**

**CAMPING  
CYCLING  
BIKE TRAILER**

**READY-TO-CAMP  
TRADITIONAL  
ÉTOILE**

### CABINS

The five (5) new fully-equipped Écho cabins on the shore of Lac Saint-Jean are available for rent in fall and winter.

### NEW

The new Camp-de-Touage campground will offer semi-serviced and 2-service campsites starting May, 2021.



## A LAND BORN OF WATER...

Pointe Taillon is a land of many faces that juts into the waters of Lac Saint-Jean. The sandy environment is very fragile. Consisting entirely of sand carried by Rivière Péribonka, the point was formed at the end of the last glaciation.

A beach, a lake, origins... using a basin, a park warden will illustrate how Pointe Taillon formed and explain the long-ago origins of Lac Saint-Jean.

**Location:** Beach kiosk.



## WILDLIFE

Animal life is intense in the park. Obvious clues, such as dams, huts and beveled tree trunks, reveal the presence of beaver. Moose have also established their headquarters in the park. In recent years, the sandhill crane has been seen in the territory. Its hoarse cries echo in the vastness of the bog... magical!

Moose are numerous at Pointe Taillon. Let a park warden show you how to read signs of their presence. Take a hike in the woods to learn all about the herd that lives in this national park.

**Location:** km 5 of the bike path.



## A PLACE OF HISTORY...

Between 1890 and 1930, a population of farmers settled on Pointe Taillon. In 1925, 52 families lived there and the total population was 307 people. There were three schools, a cheese factory and a sawmill. When Lac Saint-Jean became a reservoir lake in 1926, flooding displaced these families. Abandoned fields and sites where houses once stood testify to the human occupation of the site.

Have a chat with a member of the Hudon family. But don't be fooled, the Hudons of Jeanne-d'Arc still live in their time, 1916! An entertaining way to catch up on the latest news and gossip in this little corner of the world...

**Location:** km 6.5 km of the bike path.

## Larouche, Gaudreault, Fortin, Simard or Tremblay?

Don't miss the new discovery panels along the cycling path about the first families who lived on the park's territory in the early 1900s. Who were the inhabitants of the village of Jeanne d'Arc and what were their daily lives like?



## FLORA

Water is everywhere in the park. In the center of the point is a thick layer of vegetation made up of sphagnum moss. This vast peat bog acts as sponge that captures and retains rainwater. Besides the bog, where "carnivorous" plants are found, there are also ponds, marshes and aquatic meadows.

The peat bog is a trove of hidden secrets! A park warden will tell you how it was formed. You will discover a strange world populated with fascinating plants.

**Location:** km 1.5 of the bike path.

**Check the daily schedule posted at the Discovery and Visitors Centre. Activities may be added to this programme.**

These activities may not be offered for the 2020 season.

# NEW SECTOR OPENING

The launch of this new sector is the culmination of a long process of redefining the boundaries of Parc national de la Pointe-Taillon. The Camp-de-Touage-les-Îles sector is in the municipality of Saint-Gédéon at the mouth of Rivière Petite-Décharge. This magnificent campground by Lac Saint-Jean features a beautiful shoreline dotted with small sandy beaches, which are isolated by rocky headlands. It also includes approximately thirty islands and islets within the boundaries of the city of Alma and the municipality of Saint-Gédéon. These islands are known for their great beauty and offer privileged access to Lac Saint-Jean. A mosaic of landscapes, this archipelago of recognized ecological value shelters habitats for many plant and animal species.



## CAMP-DE- TOUAGE-LES-ÎLES



### On site

- Véloroute des Bleuets
- Bicycle rental
- Boat rental
- Boutique Nature and convenience store

### Nearby (Municipality of Saint-Gédéon)

- Club de golf Lac-Saint-Jean
- Microbrasserie Lac-Saint-Jean
- Fromagerie Médard
- Équinoxe Aventure (sea kayak rental)
- Auberge des îles
- Pump out station free of charge in the municipality of Saint-Gédéon (7 km)
- Marina and boat ramps
- Grocery, convenience stores, restaurants and gas stations

**Camp-de-Touage campground will open on May, 2021.**

**It includes:**

- 10 semi-serviced sites for tents;
- 26 semi-serviced sites for RVs;
- 44, 2-service sites (water and electricity).

**Reservation: [sepaq.com](http://sepaq.com) or 1.800.665.6527**



## ACCESS AND ACTIVITIES

### ON THE SAINT-GÉDÉON AND ALMA ISLANDS

**Picnic:** authorized (park entry fee mandatory).

**Anchoring, mooring, berthing:** authorized (park entry fee and stay permit mandatory).

**Rustic camping and fires:** prohibited (pending the development of rustic campsites).

### FEES

Valid as of May 1, 2020

Park entry fee mandatory (day pass or annual card).

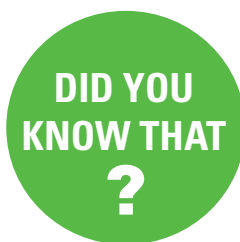
Free access for those 17 and under.

Available online through [parcsquebec/acces](http://parcsquebec/acces) or by phone: 1 800 665 6527 - see list of prices.



| INDIVIDUAL RATES                                  | ADULT<br>18 years and over | CHILDREN<br>17 years and under |
|---|----------------------------|--------------------------------|
| Daily access                                      | \$8.90                     | Free                           |
| Annual park card (for one park)                   | \$44.50                    | Free                           |
| Annual Québec national parks card (for all parks) | \$80.25                    | Free                           |

- Taxes included. All rates are subject to change without notice.
- All visitors to a national park, whether daily visitors or for a stay, must pay the entry fee. For a stay, the entry fee is in addition to the accommodation fee.
- The card is valid for a period of 12 months starting from the month confirmed at the time of purchase.
- Free admission for a person accompanying a disabled person who would not otherwise have access to the park, be able to get around in the park, or participate in an activity.



The Camp-de-Touage campground takes its name from the site of logging operations back when wood harvested in the forest was taken to sawmills along big waterways, such as major rivers and Lac Saint-Jean. From the English word tow, touage makes reference to log towing operations on Lac Saint-Jean using boats and booms. Towing began on Lac Saint-Jean in 1859. The first boat used for log towing was Price Brothers and cie's "Barbeau". Log driving on large lakes was very difficult. Without the benefit of river currents, the wind decided which direction the logs would go. Unfavorable winds could halt log driving operations for several days and push the wood far from its destination. Boats made it possible to safely transport logs on lakes like Lac Saint-Jean, where they could not be free-floated. Thousands of logs were gathered together with booms and then pulled by boat at an average speed of about one mile per hour (1.6 km/h) to the river mouths, where they could then float freely again.



# CONSERVE FOR TOMORROW

To find out more about conservation initiatives and issues in Québec's national parks, visit rendez-vous à [www.sepaq.com/parcs-nationaux/conservation/enjeux/index.dot](http://www.sepaq.com/parcs-nationaux/conservation/enjeux/index.dot)



## Conservation issues

The phenomenon of shoreline erosion at Parc Pointe-Taillon is worrisome. The level of Lac Saint-Jean, which differs the most from the natural cycle in the fall, can cause very active erosion of the Pointe Taillon shoreline when storms hit. Stabilization structures (ripraps, breakwaters, revegetation) were built in collaboration with Alcan, now Rio Tinto, to protect wildlife habitats and facilities subject to imminent threat. Since 2002, a shoreline monitoring program has been conducted annually. A system including 115 terminals was installed on the park's shores to measure the retreat of the shoreline and document this phenomenon.

This year a bank stabilization project will begin on Île Bouliane, whose shores are particularly affected by erosion. The first step will be conducting a study to find out how to protect the island and its historic resources and how to preserve its shielding effect for the channel sector and Pointe Taillon.



# SUPERVISED ACCESS FOR DOGS



In 2020, dogs will be allowed in designated areas of Parc national de la Pointe-Taillon-Taillon.

All details at [sepaq.com/animals](http://sepaq.com/animals)

## MAIN RULES\*

- Dogs must remain in the places where they are authorized at all times.
- Dogs must be kept on a leash and under surveillance at all times.
- The person in charge of the dog must pick up the animal's excrement without delay.
- Barking or howling dogs as well as dogs affecting the tranquility and safety of other visitors are not allowed.

\*Individuals who fail to comply with any of the rules stated above may be required to leave the area and/or issued a statement of offence, where appropriate.

**Compliance with the regulations is essential, and the offer could be reviewed if non-compliance is noted.**

## AUTHORIZED PLACES

|                                  |            |
|----------------------------------|------------|
| Pointe-Taillon Sector            | PROHIBITED |
| Les Amicaux Sector               | PROHIBITED |
| Camp-de-Touage – Les Îles Sector | LOOP C     |

# LABOCA

*:: Bistro ::*

Métabetchouan-Lac-à-la-Croix  
581 235-8511



## AUBERGE DES ÎLES RESORT

**Let's get wet! Whatever the weather!**

Indoor pool and water games  
kayak and stand-up paddleboard rentals  
restaurant | beach | spa | condo

📍 250 rang des îles    🌐 [www.aubergedesiles.com](http://www.aubergedesiles.com)    📞 1 800-680-2589





# Grosse Île Verte

# MICRO DU LAC IS OFFERING YOU

# A TOTAL EXPERIENCE!

Boutique | Restaurant | Tasting

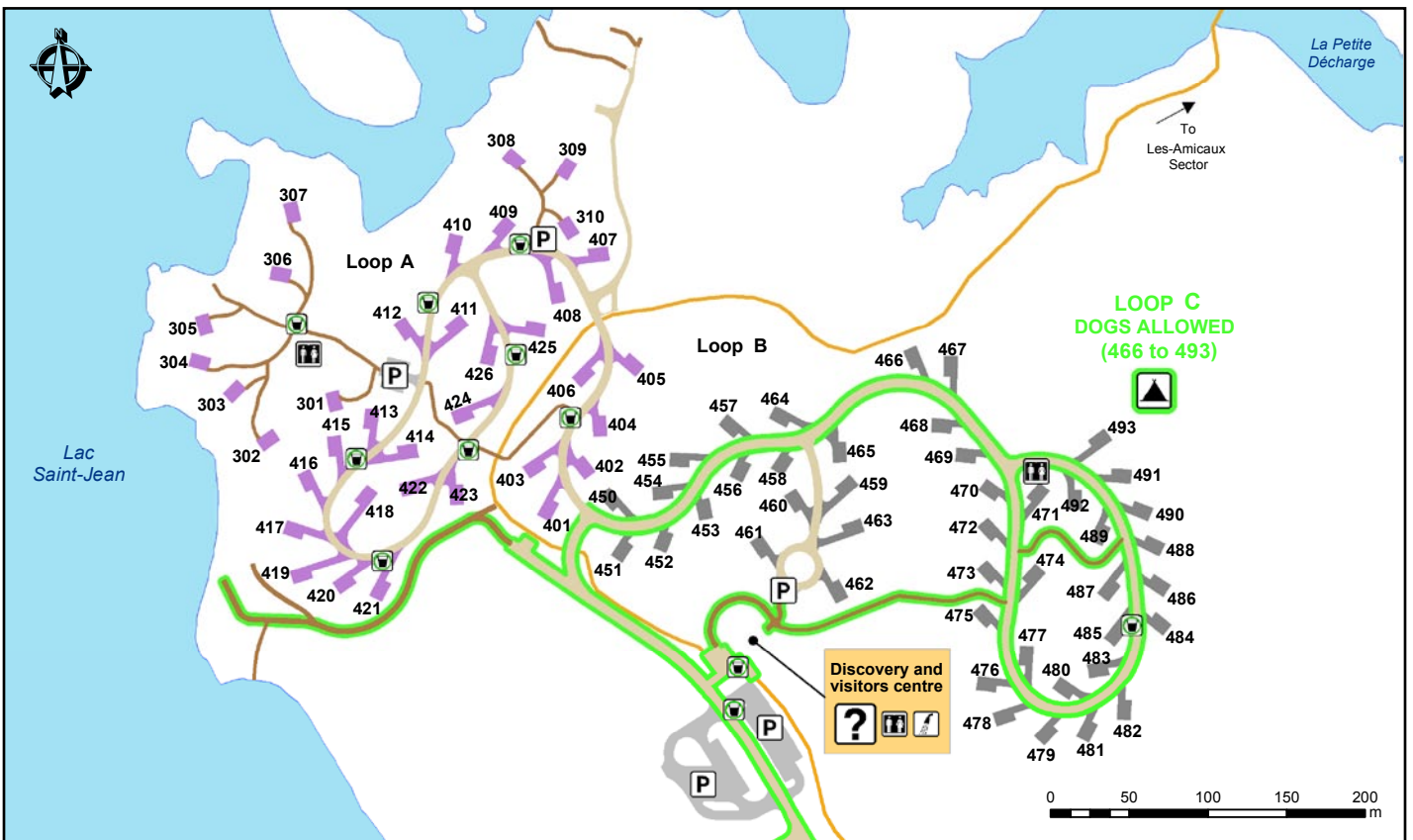


More than  
**40 beers**  
on the menu

**MICROBRASSERIE  
DU LAC  
SAINT-JEAN**

Get infos about  
our guided tours  
Facebook · Instagram

A // 120 RUE DE LA PLAGE  
ST-GÉDEON (Q.C) CANADA  
G0W 2P0  
T // 418.345.8758  
W // www.microdulac.com



**PARC NATIONAL  
DE LA POINTE TAILLON**  
—  
**Camp-de-Touage-Des Îles  
Sector**  
—  
**Camp-de-Touage  
Campground**

- |                                     |           |                                 |
|-------------------------------------|-----------|---------------------------------|
| Registration centre/<br>Information | Washroom  | Camping 2-service               |
| Shower                              | Parking   | Camping semi-serviced           |
| Drinking water                      | Bike path | Pedestrian access               |
| Dogs allowed                        |           | Road                            |
|                                     |           | Place where dogs<br>are allowed |

Cette carte intègre de l'information géographique de source gouvernementale. Pour des besoins de représentation, certaines données ont subi des transformations et des adaptations qui ont pu modifier la donnée originale. Données originales utilisées: Années 2020 Banque de données Sépaq Cartes topographiques à l'échelle de 1:20 000 1996-2000 Source des données utilisées: Ministère de l'Énergie et des Ressources naturelles © Gouvernement du Québec

# PLAY <sup>II</sup> SAFE



Photo : Steve Deschênes, Parc national des Grands-Jardins

## IN THE WILD, YOUR SAFETY IS YOUR RESPONSABILITY

Sépaq's mission is to ensure the widest possible access to Québec's most beautiful natural treasures. Sépaq is committed to the safety of its visitors and urges you to play it safe!

Preparing yourself adequately is the first step in the safe and enjoyable practice of your favourite activities. **YOU ARE RESPONSIBLE FOR YOUR OWN SAFETY** and risk management is an integral part of your experience.

Before leaving for an excursion, **MAKE SURE YOU HAVE THE SKILLS AND ABILITIES REQUIRED** to practice your chosen activity **AND RESPECT YOUR PHYSICAL LIMITS**. Your outing should leave you with nothing but pleasant memories. We invite you to consult our safety guides for Sépaq activities, available at [sepaq.com/security](http://sepaq.com/security). You will also find a list of organizations that can help you plan your activities safely.

[sepaq.com/security](http://sepaq.com/security)

## CHECKLIST

### BEFORE YOU LEAVE HOME

- Plan on going with at least one other person.
- Check the weather report.
- Pack water and food, even if the activity is only for a few hours.
- See that you have appropriate clothing and footwear for anticipated weather conditions.
- Let somebody know the exact location of your destination and the time you plan to return home.

### ONCE YOU ARE ON SITE

- Do not rely on your cellphone.
- Check how much time it will take to complete your activity.
- Obey signs and notices, including bans on open fires.

### WHEN YOU GET BACK

- Once you have completed your activity, make sure that you report to our staff anything wrong or any damage or problems you encountered.

## REMINDERS

Ⓢ During your visit to a national park, you must always carry your entry fee receipt or your annual entry card.

🚫 Remember that animals are in their natural habitat and that you are a visitor. To ensure both your safety and theirs, feeding them is prohibited; otherwise they may lose their natural fear of human beings and become aggressive.

🚫 To preserve our natural riches, you are not allowed to remove any natural elements (animals, plants, dead wood, rocks, etc.). Please also keep to established hiking trails to avoid trampling flora.

## IN CASE OF EMERGENCY: 911

**SÛRETÉ DU QUÉBEC:** 310-4141 (general number) / \*4141 (for cellphones)

\*Where cellphone networks are available. The costs and expenses incurred in conducting search and rescue operations are the responsibility of the beneficiary. You can obtain protection against these risks from an insurer.

### Parc national de la Pointe-Taillon

835, rang 3 Ouest  
Saint-Henri-de-Taillon, Québec G0W 2X0  
Information: 418 347-5371  
Reservations: 1 800 665-6527  
E-mail: [parc.pointe-taillon@sepaq.com](mailto:parc.pointe-taillon@sepaq.com)  
[sepaq.com/pointetaillon](http://sepaq.com/pointetaillon)

Legal Deposit: 2020  
Bibliothèque et Archives nationales du Québec

Photos Parc national de la Pointe-Taillon,  
Sépaq Jean-François Beaulieu, Francis Doucet,  
François Fabianek, Mathieu Dupuis, Pierre Bernier,  
Steve Deschenes, Sébastien Larose and Annie Fournier.



PCF



# PÉRIBONKA WATER SHUTTLE



Contact the skipper **418 720-8215**

From the village of Péribonka, this shuttle service ferries you across to the bike path in the national park and to the Pointe-Chevrette and l'Île-Bouliane campgrounds.

The shuttle is operated by the municipality of Péribonka for cyclists, pedestrians and campers. Use the parking lot at the right of the DJ Tremblay grocery store, facing the Péribonka marina.

No reservations are needed for the shuttle. Go directly to the marina in Péribonka or Pointe-Chevrette to cross to the other shore. Payment is made at the Discovery and Visitors Centre or in the shuttle. Please show up a few minutes in advance.

**Schedule: every day.**

## SHUTTLE <sup>1</sup>

One way

*Free for your children 5 years*

Round trip

<sup>1</sup> *The park entry fee is mandatory in addition to these fares.*

Île Bouliane<sup>2</sup>

<sup>2</sup> *Notice to campers: round-trip rates for Île Bouliane may vary depending on equipment.*

## SHUTTLE TIME TABLE <sup>1</sup>

|                           |           |            |            |            |           |           |           |           |           |
|---------------------------|-----------|------------|------------|------------|-----------|-----------|-----------|-----------|-----------|
| Péribonka                 |           | 10 a.m.    | 11 a.m.    | Noon       | 1:00 p.m. | 2:00 p.m. | 3:00 p.m. | 4:00 p.m. | 5:00 p.m. |
| Pointe-Chevrette          |           | 10:30 a.m. | 11:30 a.m. | 12:30 p.m. | 1:30 p.m. | 2:30 p.m. | 3:30 p.m. | 4:45 p.m. | 5:30 p.m. |
| Île Bouliane <sup>2</sup> | 9:00 a.m. |            | 11:45 a.m. |            |           |           |           | 4:30 p.m. |           |

<sup>1</sup> *Subject to weather conditions on Lac Saint-Jean.*

<sup>2</sup> *The hours may change.*

# ACCOMMODATIONS AND ACTIVITIES IN THE AREA

## Municipality of Péribonka

**CAMPING:** WIRELESS INTERNET ACCESS, HEATED POOL, MINI-PUTT, WATER PLAY AREAS, BIKE RENTAL  
**418 374-2626**

**MARINA:** SEA KAYAK RENTAL, BOAT RAMP, DAILY DOCK RENTAL  
**418 374-1001**

**"LE BISTR'EAU PUB PÉRIBONKA" RESTAURANT**  
**418 374-2424**

**LOUIS-HÉMON MUSEUM**

Information and reservation:  
**418 374-2967 #103 | 1 888 374-2967**  
cosep@peribonka.ca  
[www.peribonka.ca](http://www.peribonka.ca)



SEE THE LOCATION ON THE MAP ON PAGES 4 AND 5.

**A**

**Auberge Île-du-Repos** (nearby Sainte-Monique)  
105, chemin de l'Île-du-Repos, Péribonka (Québec) G0W 2G0  
Phone: 418 347-5649 | [iledurepos@bellnet.ca](mailto:iledurepos@bellnet.ca) | [www.iledurepos.com](http://www.iledurepos.com)



**B**

**Camping et plage Belley**  
100, Chemin Belley, Saint-Henri-de-Taillon (Québec) G0W 2X0  
Phone: 418 347-3612  
[info@campingbelley.com](mailto:info@campingbelley.com) | [campingbelley.com](http://campingbelley.com)



**C**

**Gîte Au bonheur du Voyageur**  
356, route 169, Saint-Henri-de-Taillon (Québec) G0W 2X0  
Phone: 418 669-1359 | Cell.: 418 612-2030  
[gite@aubonheurduvoyageur.ca](mailto:gite@aubonheurduvoyageur.ca) | [aubonheurduvoyageur.ca](http://aubonheurduvoyageur.ca)



**D**

**Camping Pointe-Taillon**  
900, rang 6 Ouest, Sainte-Monique (Québec) G0W 2T0  
Phone: 418 347-3124 | 1 877 347-3124  
[campingpointetaillon@outlook.com](mailto:campingpointetaillon@outlook.com) | [campingpointetaillon.com](http://campingpointetaillon.com)



**E**

**Hôtel Universel (centre-ville d'Alma)**  
1000, boul. des Cascades, Alma (Québec) G8B 3G4  
Phone: 418 668-5261 | 1 800 263-5261  
[hotel@hoteluniversel.com](mailto:hotel@hoteluniversel.com) | [www.hoteluniversel.com](http://www.hoteluniversel.com)



**F**

**Travelodge Alma (centre ville d'Alma)**  
450, rue Sacré-Coeur Ouest, Alma (Québec) G8B 1L9  
Phone: 418 668-3222 | 1 877 917-3222  
[reception@travelodgealma.com](mailto:reception@travelodgealma.com) | [www.travelodgealma.com](http://www.travelodgealma.com)



**G**

**Jardin Scullion**  
1985, rang 7 Ouest, L'Ascension-de-Notre-Seigneur (Québec) G0W 1Y0  
Tél. : 418 347-3377 | 1 800-SCULLION (1 800 728-5546)  
[info@jardinscullion.com](mailto:info@jardinscullion.com) | [www.jardinscullion.com](http://www.jardinscullion.com)