

SEPTEMBER to JUNE — *What a vacation!*

The Mountain Playhouse will be "Vacationing" until next summer, but the hazards of Fire, Theft and Accident **never** take a holiday!

For **year round** insurance service and protection, consult—

H. R. SWETLAND
INSURANCE COUNSELLOR

THE LONDON ASSURANCE
A.D. 1720

Producer: NORMA SPRINGFORD

Mountain Playhouse

1954 SEASON



How to Steal a Scene

Take the lead away from worry on
pay-day. Pay yourself, too. Save at ...



BANK OF MONTREAL
Canada's First Bank

SP107

WORKING WITH CANADIANS IN EVERY WALK OF LIFE SINCE 1817

Obtainable in an infinite variety
of beautiful modern colors.

new!

Decoratone

odorless alkyd
WALL ENAMELS

FLAT ★ SATIN ★ GLOSS



- Brush or Roll
- Go on easily
- Dry in a jiffy
- Clean like magic

WE GUARANTEE THE VEHICLE SOLIDS OF THIS
MATERIAL TO CONTAIN 85% OR MORE "WALKYD"



THE CROWN DIAMOND PAINT CO. LIMITED

MONTREAL

TORONTO

QUEBEC

SHERBROOKE

CHICOUTIMI

THREE RIVERS

RIVIERE DU LOUP

MONCTON

HALIFAX

DIAMONDS
FASHION JEWELLERY
SMART LAMPS
GIFTWARE

JOAILLIER
F. Murphy
JEWELLER

1412 DRUMMOND
STREET



COTE DES NEIGES SERVICE STATION & GARAGE
5228 COTE DES NEIGES

Greasing and Oil Changes • General Auto Repairs • Auto-Magic Car Wash
Monthly Parking • Expert Body Work • Towing and Road Service

RE. 7-5433 and 4990

OPEN 24 HOURS A DAY

Our staff is well trained to service English cars as well as American cars.
See us for your car's needs.

*A beautiful 21" Admiral Television Set — will be drawn for on Sept. 7th, 1954.
Ask the attendant for your free coupon with every purchase at the Cote Des Neiges
Service Station.*



*Enjoy the delightful fragrances of Nature appealingly blended . . . attractively
boxed by . . .*

MARY CHESS OF CANADA LIMITED

PERFUMES — BATH PREPARATIONS — COSMETICS

Sold by department and drug stores . . .

Compliments of

THE ARBORITE COMPANY LIMITED

• CANADA'S LARGEST MANUFACTURERS OF PLASTIC LAMINATES •

SEE

C. Reichmann Fur Salon

Specializing in Fur Garments — Made-to-Order

1550 Stanley Street

Tel. MArquette 5589

"WHERE EVER YOU GO YOU WILL SEE AUSTIN"

AUSTIN SALES AND SERVICE

over 21 years Service
and Sales in Montreal



949 ATWATER AVENUE

Wilbank 4176

Mountain Playhouse

presents

GIGI

Dramatized from Colette by Anita Loos

Directed by GUY BEAULNE

Settings by PETER SYMCOX

CAST

(In Order of Appearance)

Gigi	DIANE GIGUERE
Mme. Alvarez	WINIFRED DENNIS
Andrée	BEATRICE PICARD
Gaston Lachaille	JACK CRELEY
Victor	LEW DAVIDSON
Alicia de St. Ephlam	ENA GILLESPIE
Sidonie	GERMAINE GIROUX

Costumes created by TOM OWEN

from

HARRISON'S LTD. • FAMOUS FABRICS

"The world's finest fabrics at your fingertips"

5 stores in Montreal

VISIT THE CANADIAN HISTORIC MUSEUM LTD.

- America's Most Beautiful WAX MUSEUM . . . over 200 life-size Wax Figures in a marvellous setting AMAZINGLY REALISTIC.
- Picturesque life-like scenes of Historic Canada. World's unique reconstruction of the famous Catacombs of Rome.
- CATACOMBS OF ROME. PAINTINGS. FRESCOES. THE ROMAN CIRCUS.

A visit you will never forget!

3715 QUEEN MARY ROAD (one block east of St. Joseph Shrine)

RE. 8-5959

PERFECT

COFFEE

AT ALL TIMES!



SCENE

ACT ONE

Scene 1—Mme. Alvarez' living-room.

Scene 2—The Boudoir of Mme. Alicia de St. Ephlam.

Scene 3—Same as Scene One.

ACT TWO

Scene 1—Mme. Alvarez' living-room.

Scene 2—Alicia's boudoir.

Scene 3—Mme. Alvarez' living-room.

PLACE: PARIS — about 1900

ONE INTERMISSION OF FIFTEEN MINUTES

CREDIT SUISSE (CANADA) LIMITED

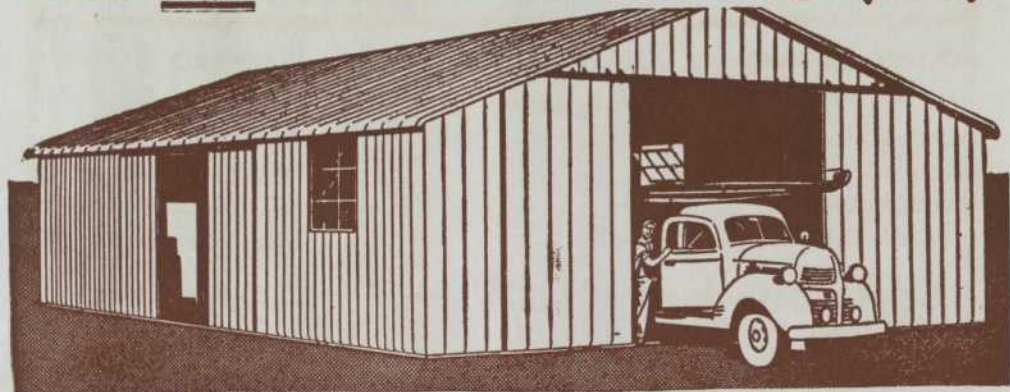
CREDIT SUISSE BUILDING

1000 BEAVER HALL HILL, MONTREAL

Our special lines include:

- Opening of safekeeping accounts.
- Execution of orders for the purchase and sale of securities.
- Advisory service regarding investment opportunities.
- As well as other services in the field of personal property administration.

See and Price these new BUTLER buildings *first*



Make sure you see these new Butler clear-span rigid frame buildings before you build.

See how bolted construction speeds erection, makes later expansion or relocation easy, economical. Look at the clear-span interiors that let you use all the space you pay for. Notice your choice of galvanized or aluminum sheeting for weather-tight protection with minimum upkeep. Compare their price with any other buildings—you'll find you build better with Butler.

Get the Butler building story first—



You'll see how these new Butler buildings—in widths and lengths to fit your exact needs—will make your building dollars go farther!

Call or write us for more facts today!

PRE-ENGINEERED STEEL BUILDINGS

DIVISION OF GEOCON LTD.

DORVAL, P.Q.

6373 COTE DE LIESSE ROAD

MELROSE 1-3525

See us for complete sales and erection service on Butler Buildings

Look! You can get these new BUTLER buildings in these sizes!

10-foot sidewalls

20, 24, 28, 32, 36-foot widths. Lengths in any number of 20' sections. Also lean-tos 16' wide with 8' sidewalls.

14-foot sidewalls

70 feet wide. Lengths in any number of 20' sections. Lean-tos 20' wide with 8' sidewalls.

12-foot sidewalls

36 feet wide. Lengths in any number of 20' sections.

Doors and windows located for your convenience!

- ARTIST MATERIALS . . . Wide Variety
- PAINTER'S SUPPLIES . . . Paint for every purpose

C. R. Crowley Limited

THE PAINT MAN

1387 ST. CATHERINE STREET WEST

MONTREAL

TELEPHONE PLATEAU 4412

GENERAL MANAGER BRUCE RAYMOND

THE PLAYHOUSE STAFF

STAGE MANAGER LEW DAVIDSON
 LIGHTING WILLIAM SPRINGFORD
 PROPERTIES MARION DENNIS
 ASSISTANT STAGE MANAGERS ANDRE DUFRESNE
 DAVID WEIMAN
 PROPERTIES ASSISTANT ROSALIE BRIGGS
 COSTUME ASSISTANT CHARLOTTE GRIEVE
 PRODUCTION ASSISTANT HEATHER DIPLOCK

ASSISTANT TO THE GENERAL MANAGER NEIL MADDEN
 PUBLICITY AND PUBLIC RELATIONS JACK MARSTERS
 PROGRAMME ADVERTISING REPRESENTATIVE ROSE GOULD
 CLUB STEWARD RENE BOUCHER

FURNISHINGS AND DECOR: (Including credits for "The Little Hut" not received in time for that programme) — Music by Trevor Peck Co. Ltd.; Jewellery by Henry Birks & Sons (Montreal) Ltd.; Set Dressings by Jacoby's House of Antiques, Ltd.; Anglo Canadian Mercantile Co. Ltd.; Hubert Plomer Antiques, Bell Telephone Co. of Canada, The Antique Cove and T. Eaton Co. (of Montreal) Ltd.; Men's Costumes by Ponton of Montreal; Flowers by Marcel Le Mat Flower Shop; Furs by A. J. Alexandor Furs; Period corset by C. J. Grenier, Ltd. Additional decor by Peerless Fruit Co., Murray & Company Sporting Goods and Gourock-Bridport Limited; Lounge Television by Northern Electric Co. Ltd.

OUR SPECIAL EXHIBIT: The Quebec Handicrafts Provincial Bureau of the Ministry of Trade and Commerce is co-operating with us this year by presenting a part of its permanent collection of handicrafts in the theatre foyer. Some of the prominent craftsmen represented are André Bourgault, Hubert Boyer, Georges-Edouard Tremblay, Lucien Desmarais, Cecil Barot, and Marcel Juneau.

PEPSI-COLA

TRADE MARK REG'D.

After the curtain falls

ENJOY...



👑 'COOL CONTROL' BREWED

👑 RICE BREWED to the CANADIAN TASTE



"EXPORT"
CANADA'S FINEST
CIGARETTE

Creative Hair Stylings

AT

400

BEAUTY

SALON

★

Our Salon is Air Conditioned

4744 Cote des Neiges RE. 8-2313

D. ENGLISH & CO. LTD.
Montreal — UN. 6-2886

PROMOPLA 1954.08.16x