

Townships Getaways



Victorian villages
and trendy towns
paradise for
day-trippers

Golfing, bicycling,
hiking, camping,
fishing, antiquing,
sightseeing

Découvrir des
joyaux des
Cantons-de-l'Est
– tout près!

Brome County
NEWS 

THE
RECORD

Summer Supplement
June 2000

Treat yourself to a Townships visit

Welcome to the Eastern Townships, an area known for its rolling hills, rambling rivers, lush farmland and, most importantly, its good-neighbour policy.

Throughout the Townships, visitors will be assured a warm welcome wherever they go, whether it's while stopping to buy fresh produce at a roadside kiosk or during a visit to some of the region's tourist attractions.

Each community of the Townships is endowed with its own character - from Victorian villages such as Knowlton with its picturesque New England architecture and boutiques to the outdoor cafés and bustling waterfront of Magog.

Each community also has its share of secrets waiting to be uncovered - you can discover Townships talent during the summer Tour des Arts visits to the



SHARON McCULLY

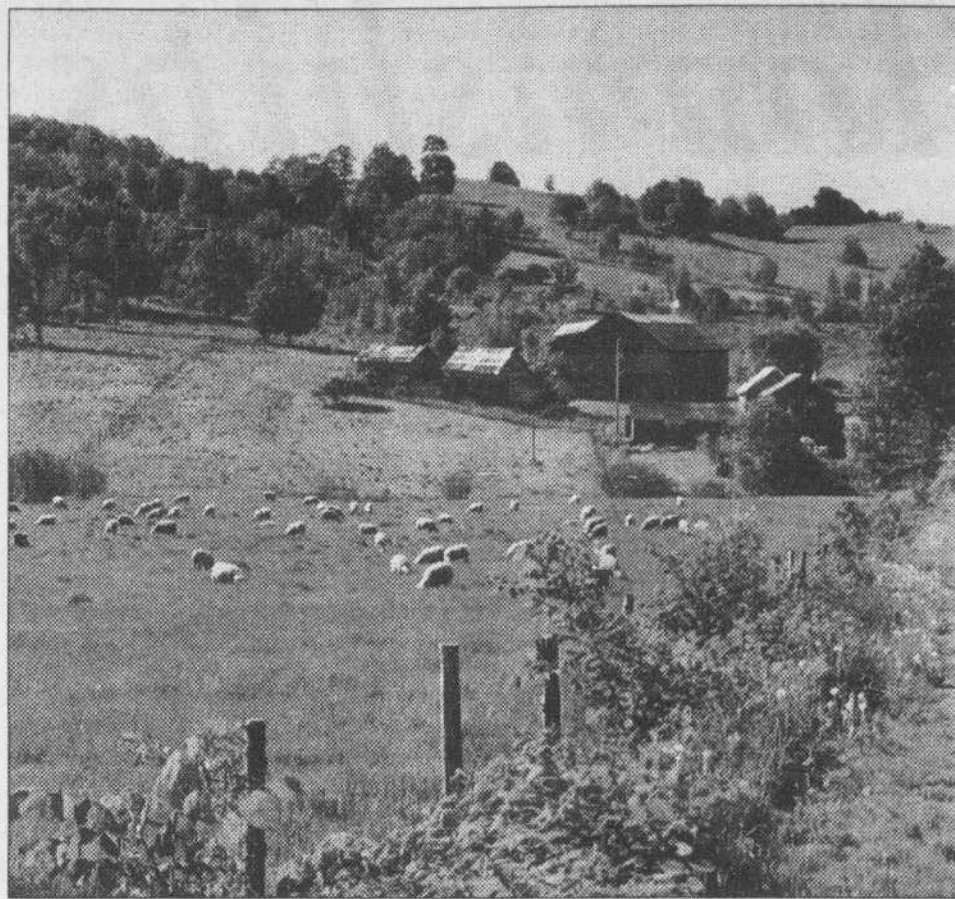
homes and studios of area artists. Or marvel at the local thespians while visiting any of the numerous summer theatre productions in both English and French.

There will be concerts, indoors and out, street festivals and farm visits, agricultural fairs throughout the Townships.

Guided tours are available to direct you through the region's vineyards, heritage museums or natural attractions. Or you may prefer to do a little investigating on your own and find hidden waterfalls, hiking trails or bicycle paths.

Whatever your vacation preference - a quiet spot by the water to relax with a good book or boating on the lake, there's a spot in the Eastern Townships for you and a warm welcome awaiting.

Treat yourself to a Townships visit this summer.



DAVID ANDERSON/CORRESPONDENT

Each community of the Townships is endowed with its own character.

BROME FAIR

September 1, 2, 3 & 4, 2000

Points of interest: The Big Parade - Sunday at 1:00 p.m.; Luc Leduc - The Duke of Magic throughout the fair; Birds of Prey - flight demonstration; The Petting Zoo; Livestock competitions - Regular and 4-H; Horse racing & breeds demonstration; Knowlton Harmony Band & much more.

Friday at 8:30 p.m.
Kitty Wells
Family
Show

Saturday*
Leahy
8:30 p.m.

Sunday at 8 p.m.
Johnny Reid
& Denise Murray

Tickets for this show are on sale by mail or phone. We will accept money orders or Visa and Mastercard. Grandstand tickets, no reserve seating \$10.00 taxes included Standing room on the track.

There will be a \$2.00 handling fee charged on mail orders. Prices include GST & PST. Tickets will also be available at The Shack in Knowlton, F.G. Edwards, West Brome, Dépanneur Brome and the Fairgrounds in Brome (no handling fee). These tickets do not include entry to the fairgrounds.

Annual Beef Bar B Q - August 5, 2000 with Sandy Ward & Roadhouse Band

450-242-EXPO (3976)



While in the Townships,
read *The Record*
five days a week

The King's Attic

The King's Attic will sell, on consignment, your quality household and decorative items, furniture and garden art. The King's Attic will make house calls, if you prefer. The King's Attic will also coordinate estate sales with local reputable antique dealers.

We are presently taking items on consignment.

Mill Pond Village, 264 Knowlton Rd., Knowlton QC J0E 1V0
Tel.: (450) 243-0243 / E-mail: kings.attic@qc.aibn.com

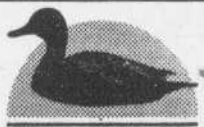
Le Grenier du Roi

Le Grenier du Roi vendra, en consignment, vos objets de qualité, tels que accessoires de décoration, articles ménagers, meubles et accessoires décoratifs de jardin. Le Grenier du Roi offre le service à domicile, au choix. Le Grenier du Roi coordonne aussi les ventes de successions avec les antiquaires locaux de bonne réputation.

Nous acceptons présentement des articles en consignment.

Village Mill Pond, 264, ch. Knowlton, Knowlton QC J0E 1V0
Tél.: (450) 243-0243 / Courriel: kings.attic@qc.aibn.com

Brome County
NEWS



88 LAKESIDE, KNOWLTON, QUEBEC, J0E 1V0
TEL: (450) 242-1188 / 242-6892 FAX: (450) 243-5155

Published weekly by

1195 Galt E., Sherbrooke,

QUEBEC, J1G 1Y7

FAX: (819) 569-3945 E-MAIL:

newsroom@sherbrookerecord.com

website: www.sherbrookerecord.com

THE RECORD

RANDY KINNEAR PUBLISHER 800 463-9525
SHARON McCULLY EDITOR/OFF. MGR. (450) 242-1188
ALISON STEEL SECRETARY (450) 242-1188
LYNDA BELLAVANCE ADVERTISING (450) 242-6892
MICHEL DUVAL ADVERTISING 800 463-9525
SUNIL MAHTANI CORRESP. EDITOR ... 800 463-9525
RICHARD LESSARD PROD. MGR. 800 463-9525
SERGE GAGNON CHIEF PRESSMAN 800 463-9525
FRANCINE THIBAUT PROD. SUPERV. . 800 463-9525

CIRCULATION

Distributed to all Record subscribers every Wednesday as an insert, and to all households and businesses in Abercorn, Bedford, Brigham, Brome, Bromont, Cowansville, East Farnham, Foster, Fulford, Knowlton (Brome Lake), Sutton, Bolton Centre, West Brome.

SUBSCRIPTIONS

	GST	PST	TOTAL	
CANADA: 1 YEAR	114.40	8.01	9.18	\$131.59
6 MONTHS	59.00	4.13	4.73	\$67.86
3 MONTHS	30.00	2.10	2.41	\$34.51

Out of Quebec residents do not include PST. Rates for other services available on request. The Record is published daily Monday to Friday. Back copies of The Record are available.

The Record was founded on February 7, 1897, and acquired the Sherbrooke Examiner (est. 1879) in 1905 and the Sherbrooke Gazette (est. 1837) in 1908. The Record is published by UniMedia Company, a subsidiary of Hollinger Canadian Newspapers L.P.

Canadian Publications Mail Service Product Agreement No. 0479675.

Member
ABC, CARD, CNA, QCNA



Knowlton: Victorian village is mecca for tourists

Small town is weekend retreat for some of Canada's wealthiest

By Rita Legault

Nestled between the lush green mountains of Sutton and Shefford on the shores of Brome Lake, the picturesque village of Knowlton has been a widely-known resort center since the turn of the century.

The rolling hills above the village were first settled by hard working farmers from New England who tilled the land.

In 1815, the town's founder, merchant Paul H. Knowlton, arrived to build a grist mill on the shore of Coldbrook Stream. Realizing the village's potential, the shrewd developer built a blacksmith shop and a general store and encouraged other merchants to come and set up shop.

According to an eyewitness account of the village of Coldbrook in the Montreal Herald and Commercial Gazette, development of the town was already well underway in 1837.

"Mr. Knowlton's improvements, besides materially enhancing the value of his wild land in the neighborhood, directly yielded a handsome reward even at this early period of their existence."

Colonel Knowlton, a colorful character who distilled whiskey from potatoes and sold it for 25 cents a gallon at his general store, was also largely responsible for bringing

church and school to the community. The colonel donated land to build the first St-Paul's Anglican Church and Knowlton Academy.

Soon after Knowlton's arrival, the town was bustling with new activity and by the late 1860s it became the permanent residence of a number of well-to-do Montrealers who built grand

mansions on the south shore of the lake - now commonly referred to as Millionaire's Row or the Golden Mile.

Even then, despite the surrounding wealth, Knowlton remained an agricultural community of hard working farmers.

In 1867, the Canadian Tourist Guide commended the area for its excellent hunting and fishing while pointing out the town's resort potential.

"Near the head of the lake is Knowlton, a place which bids fair to become a permanent summer residence of the Montreal bon ton; and certainly a more sequestered and yet accessible spot could scarcely be had."

Coldbrook vil-

lage was incorporated in 1888 and named after its founder Knowlton who had died in 1863.

With the coming of the first railway in 1875 came a fresh wave of expansion as the area became more accessible to wealthy outsiders. Development remained concentrated on Brome Lake, the jewel in the center of the community.

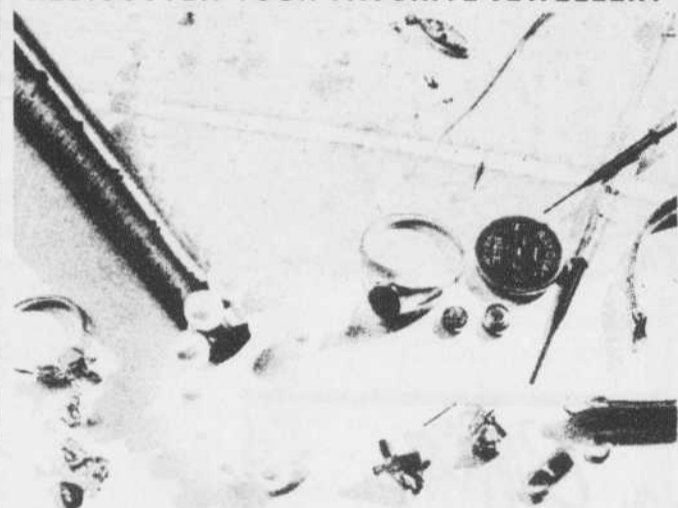
CONTINUED ON NEXT PAGE



RECORD FILES

Victorian days are celebrated in the village of Knowlton.

REDISCOVER YOUR FAVORITE JEWELLERY



of The Shack

- Jewellery and watch sales and services
- Jewellery cleaning and inspection
- Pearls restrung
- Custom-made Jewellery
- Qualified appraisals for insurance purposes
- Vente et réparations de bijoux et de montres
- Nettoyage et inspection de bijoux
- Perles renfilées
- Design de bijoux
- Évaluations accréditées pour fins d'assurance

Accredited Goldsmith CJA David N. Dawes
28 years service

37 Lakeside, Knowlton, QC (450) 243-5128

Est. 1972

THE SHACK REG'D LE ENR.

"YOUR JEAN STORE"

KNOWLTON & CANADA SOUVENIRS

37 Lakeside, Knowlton 450-243-5128



Country Furniture & Gift Gallery



*Decoration Accessories - Gifts - Wooden Ducks
- Antique Copper - Wrought Iron & much more!*

255 KNOWLTON ROAD, KNOWLTON (QC) J0E 1V0 (450) 242-1620

Summer and winter compete for top billing

CONTINUED FROM LAST PAGE

The famous Knowlton Boating Club, which was incorporated in 1902, makes the lake a popular center for swimming, sailing and fishing - not to mention tennis.

For a time, development slowed down. The community, whose population doubled each summer, settled

down. Commercial activity in the town was mostly concerned with summer residents.

During the mid-1900s, there was decline in growth. In 1942, the town attracted Clairol cosmetics, which for a long time was the town's largest industry and em-

ployer. However, even the arrival of Clairol did little to transform the town from a rural, residential town with a suburb of rich private estates.

On Jan. 2, 1971, Knowlton joined the surrounding villages of Foster, West

Brome, Iron Hill, Bondville and Fulford to form the Town of Brome Lake. The move was mostly so the rural communities could avoid being annexed by fast developing Bromont nearby. That strategy worked for a while, but the quiet years were over as Knowlton experienced yet another wave of development this time centered around attracting tourists to the recently upgraded downtown core.

Once the bustling center of Brome County, the sleepy village now comes alive on weekends with flocks of tourists from Montreal and elsewhere. They come to shop at outlets and boutiques like L. L. Brome, to hunt for antiques, and to rout out truffles from Chocolaterie/Patisserie Raphael. They also come to dine in local restaurants and sample some world famous Brome Lake duck and to be entertained by Theatre Lac Brome's summer fare at the Knowlton Pub Playhouse.

Summer and winter now compete for top billing in the quest for tourist dollars. Sailing, swimming, waterskiing and windsurfing on Brome lake top the list of activities, but there are a handful of golf courses, including the old Knowlton Golf Club - and plenty of riding stables nearby.

In the winter, skiers glide across cross-country ski trails and take to the slopes of Glen Mountain, Sutton and Owl's Head.

Today, thousands of tourists from across Canada flock to Knowlton each year to visit the quaint Victorian village. For more information on walking, driving and historic tours, contact the Brome Lake Tourist Bureau at

(514) 242-2870.



RECORD FILES

The dam in the heart of Knowlton.

Restaurant Le Nilsson 1984
THE HOUSE OF THE DUCK BROCHETTE



Duck	Specialities	
<ul style="list-style-type: none"> • Terrine • Sausage • Swedish Meatballs • Brochette • Magrets 	Lunch Express Evening Express Table d'Hôte	<ul style="list-style-type: none"> • Sandwiches, Salad • Pasta • Fish • Seafood • Beef Children's Menu

70 Lakeside Rd., Knowlton (450) 243-0621

Kathy Feig
Scribe

With over 20 years experience, calligraphy & design services include:



POEMS
 MENUS
 SCROLLS
 AWARDS
 BOOKLETS
 INVITATIONS
 CERTIFICATES
 INSCRIPTIONS
 HAND-MADE ALBUMS
 & PUBLICATION DESIGN

tel: 450-538-0989 fax: 450-538-0993
 email: penkathy@sympatico.ca
 www.sunnymead.org/userpages/Scribe.html

Wedding Gifts
& much more



SEAGULL
DESIGNS

Duo décor

Come and see our many gift ideas for summer entertaining!

Gifts, jewelry, decorations

Domaine du Parc, Cowansville (450) 266-4747



"Mysteria" has returned on a permanent basis with Victorian Creations which includes the Bridal Collection

The boutique will carry antiques, collectibles, vintage clothing & jewelry, plus gift ideas made by local artist.

Mysteria Boutique
 20 Principale N., Place Sutton
 450-538-6565

Catching the Christmas spirit in Knowlton

It's Christmas every day of the year at Elfe du Village

By René Bruemmer
KNOWLTON

The former Mrs. and Mrs. Santa Claus may have given up the shop, but a new couple has stepped in to keep the Christmas spirit alive 365 days a year in the village of Knowlton.

After 18 years of running Camlen's Christmas store, Cam and Helen Brown decided it was time to focus their efforts on their burgeoning antique business. But the store had become such a tradition in the area, they didn't want to be the Grinches who killed Christmas in the picturesque village.

"Everybody loves the store," son and former store manager Greg Brown said.

"It's become a bit of an institution in town, and we wanted to continue it."

Into the void stepped Bob Marsh and his wife Elaine Cooper Marsh, local Yuletide fanatics who were looking for a change from their previous businesses and had the necessary credentials to become the new Clauses in town.

"In January, I've always found it depressing when you have to put the Christmas stuff back into storage," said Cooper Marsh, who describes herself jokingly as a Martha Stewart wanna-be. "Christmas has always been one of my passions."

On June 1 of this year the new owners took possession of the store and all its trinkets, moving down the hill to the old Tannery building on Lakeside Street, which serves as a suitably rustic location.

The name has been changed to Elfe du Village (Elfe is an archaic French form of the word elf) but the store retains the same cluttered charm.

Christmas ornaments of every imaginable variety line the walls and dangle from numerous fake evergreens. Figurines of Santas and penguins, snowmen and wise men, birds and baskets and bells and balls, candle holders, sleds and mini-Christmas trees pack every available table and shelf.

CONTINUED ON NEXT PAGE



RENÉ BRUEMMER

The name has been changed to Elfe du Village (Elfe is an archaic French form of the word elf) but the store retains the same cluttered charm.



RENÉ BRUEMMER

Christmas ornaments of every imaginable variety line the walls and dangle from numerous fake evergreens.



ANTIQUES
&
Quality Items
WANTED FOR
CONSIGNMENT
SALE



July 14th & 15th
Knowlton
United Church

N. Lockwood	(450) 243-1569
R. Price	(450) 243-5980
J. McGee	(450) 242-0246

Retirement living in the picturesque town of Knowlton



"A place to call home!"

<<Un endroit où il fait bon vivre>>

RÉSIDENCE POUR LES AÎNÉS / RETIREMENT RESIDENCE

*Long or convalescent stays with
24 hr. nursing care*

*Deliciously prepared meals & social activities
to enjoy with a warm and caring personnel*

*Séjours convalescence ou de longue durée,
soins 24h sur 24*

*Repas délicieux, programme
d'activités et un personnel chaleureux*



Denise, Stiles, Manager / Directrice
Kim Page, Administrative Assistant / Adj. administratif
28 Mount Echo, Knowlton, Québec (450) 242-4663

We look forward to seeing you in the new Millennium

MEMBRE



Les Salles de Bain SM et Fils

Authorized DEALER - KOHLER - GROHE - MARONYX - AQUABRASS
- JACUZZI - AMERICAN STANDARD - ALCOVE

- GREAT PRODUCTS - GREAT SERVICE - GREAT PRICES -
THE BEST AND THE MOST COMPLETE SELECTION IN THE TOWNSHIPS

1 Main St. West
Magog

843-3323

1-888-922-3323

'People smile when they come into the store, and they're always smiling when they leave'

CONTINUED FROM LAST PAGE

Wreaths compete for space with tinsel and vintage cars, and the store also carries a line of limited edition collectibles, miniature villages complete with town halls, people and cars, that can only be purchased in a handful of certified stores across the country.

The new owners fill out the decor with cheery countenances and in appropriate red and white costumes.

On a cloudy Saturday afternoon in June, the store was crowded with tourists stocking up for the coming Christmas season.

"It's been like this since we opened," Cooper Marsh said. "And it's a beautiful place to work. People smile when they come into the store, and they're always smiling when they leave."

Bob Marsh, who bears a pass-

ing resemblance to Mr. Claus with his greyish white beard and a slight paunch - "I've been working on this costume my whole life," he says, patting his belly - ran an import and export business out of Montreal for 30 years, and noticed on his travels to Germany and the U.S. that Christmas theme stores were much more popular there than in Canada. He says Elfe du Village is the only one in the Townships, and there are only a couple of others in and around Montreal.

Knowlton's steady tourist trade brings in sufficient traffic to keep the store running, and the couple are plan-

ning a variety of events over the week-ends to generate interest.

They've also kept up the tradition of selling home-made fudge, instilled and passed on by the previous owners, who, in the spirit of the store, have been generous with their time and advice.

Elaine and Bob are relying on the feeling of Christmas to do the rest.

"After all," said the new Mr. Claus, "if you can't sell Christmas, you can't sell anything."

.....

Elfe du Village is open all year round and can be reached at 450-243-NOEL.

Les Fringues
votre Boutique

Men's & Women's Fashion Clothing

PART TWO InWear

PARADOXIA

WASH & WEAR maestro men

C'est la Vie! initial

10% DISCOUNT WITH THIS AD

Bromont Knowlton
(450) 534-4949 (450) 242-2953
Les Versants de Bromont 88 Lakeside

Down to Earth Pottery

Invite you to come and visit our studio, open to the public as part of the Tour des Arts July 15th - 23rd

Available at:
Brie & Cie,
291C Knowlton Rd., Knowlton.
Robin Badger 450-242-2836



RENÉ BRUEMMER

The new Claus family in Knowlton in front of Elfe du Village Christmas store... elf Melanie Bilodeau, daughter Laura Boisvert-Marsh, Mrs. Claus Elaine Cooper Marsh and Santa Bob Marsh.

STUDIO TOUR

TOUR DES ARTS

July 15 - 23, 10am - 5pm

40 artists in the Sutton, Mansonville and Knowlton area, invite you to come and visit their studios, see demonstrations and talk about their art.

Flyers with map available at:
Sutton Tourist Bureau, Town Hall, 1-800-565-8455
Reilly House, Mansonville, Knowlton Tourist Bureau,
Brome County Historical Museum,
Knowlton Info Touristique, Exit 68, autoroute 10
Centre Info-Arts Bell, Place des arts
The Gazette, 250 St-Antoine W., Montreal

www.acbm.qc.ca/tour-des-arts

Elfe du Village

Formerly Camien Christmas Shop
NEW OWNERS:
Bob & Elaine Cooper Marsh
continue the tradition...

Come celebrate with us

Christmas Decorations, Collectibles & Fudge

Dept. 56 Dealer - Dickens Village, Snow Village, etc.
All your favourite home-made fudge & our fudge specialist, Laura, presents the Flavour of the Week

61 Lakeside (in the old Tannery) (Knowlton) Lac Brome
(450) 243-Noel-(6635)
Toll free: 1-877-530-Elfe-(3533)
email address: marshdom@endirect.qc.ca

Karaoke
Barbara Cosgrove
1st Friday of every month

Cedric's Pub

Daily Specials starting \$5.95
Live Entertainment

Come celebrate your special events with good friends, good food & good times.
We specialize in parties for 10-40 people.

242-2929
51 Lakeside, Knowlton
Enjoy the experience

Take-offs becoming more popular in antique trade



RECORD FILES

The popularity of the industry has led to a large number of new antique stores sprouting throughout the region.

Bustling business for all things old

By René Bruemmer
KNOWLTON

The antique industry in the Townships is quickly becoming a victim of its own popularity. With a recent surge in the demand for Quebec-style and Canadiana pine furniture dating back 100 to 150 years, many dealers are having increasing problems finding antiques to sell to their clients.

At the same time, the popularity of the industry has led to a large number of new antique stores sprouting throughout the region. A partial list supplied by

the Eastern Townships Tourism Board lists more than 50 different stores where lovers of everything old can find something new to add to their homes.

To top it off, dealers from as far as Montreal and the U.S. are descending on local auctions, once the sole domain of local buyers.


"Often these people will bid incredible prices for pieces, prices that are higher than what we would charge in our stores with the profit tacked on," says sales-

person Molly Rochette of Emporium antiques in North Hatley. She notes that this year's damp and chilly weather has not helped sales either.

The Emporium still manages to find true antiques at auctions, or from people selling their homes. But like many of shops in the district, it's also turning to reproductions of the popular 19th century furniture, made with new pine but treated to give it an older look.


CONTINUED ON NEXT PAGE

Denise and Joseph Beaudry



À L'ÉTAGE ANTIQUITÉS - ANTIQUES

Assortment of glass and procelain - Furniture
Knick-Knacks



OPEN: Every day. Sunday Noon to 5 p.m.

(450) 539-2303 - FOSTER (VILLE DE LAC BROME)

Ornements de jardins..Garden ornaments

Fontaines, bassins en pierre, tonnelles, colonnes, bassins pré-moulés, pompes, toile, urnes, pots, jardinières bains d'oiseaux, sculptures, statues, personnages, tuiles de patio, arches & contre-marches, balustrades, contours de plates-bandes, objets décoratifs, fontaines, birdbaths, arches, columns, pedestals, harbours, pergolas, pre-formed pools, pumps, urns, pots, planters, sculptures, statues, figures, patio tiles, arches & risers, rails, flower bed borders, decorative objects.



**Achat formidable
Fantastic buy**
11 pi/feet dia.
tige 2" dia. acajou
quincaillerie laiton
pole 2" mahogany
brass hardware
tissus vert/ fabric green
prix réduit / reduced price
\$750 \$375

table&chaises
en tège
table&chairs
in teak



chaises longues
en tège teak
lounge chairs



bancs en tège
teak benches



fontaine
fountain



bain
d'oiseau
birdbath



243 Knowlton, Lac Brome, Qc, Canada, J0E 1V0
450 243-0500, www.designartjardins.com

Authorized
Kohler
Showroom



Les Salles de Bain SM et Fils

Combine the nostalgic look of the past and the technology of today with Vintage. Strong forms with generous, curved rims and rich wood finishes ensure the timeless elegance of the suite.

THE BOLD LOOK
OF **KOHLER.**

1 Main St. West
Magog
843-3323
1-888-922-3323

Many shops, low prices and friendly service

CONTINUED FROM LAST PAGE

Several shops these days are lined with authentic looking armoires, tables, chairs, drawers and desks that are rustic, faded and even bruised, but were actually built a few weeks earlier.

The practice of using old beams from barn floors or demolished houses is fading because the quality of the wood is often no longer good enough to ensure long-lasting furniture.

Camlens antique store in Knowlton used to focus mainly on real antiques or doing restorations of battered articles, but often the pieces were too far gone and artisans found themselves having to completely rebuild antiques from scratch.

Noting the popularity of the reasonably-priced reproductions, Camlens started focusing more on that side of the business a few years ago, and saw sales improve considerably.

"We also incorporated a Web site, which to our surprise has brought in a lot of business," from sites as far-flung as the southern states and western Canada, store manager Greg Brown said. "It's a wonder they can even find us on the Web, but they do."

In order to diversify to survive, antique dealers aren't merely focusing on big-ticket furniture items these days. Lamps, picture frames, brass fittings and ornaments, figurines, woodwork, jewelry and candle

holders also predominate.

The town of Knowlton has traditionally been a strong drawing card for tourists due to the large number of antique stores that set up in the region, and because of the large number of wealthy families that used to live in the area and provide antique fodder.

These days the pickings are less plentiful but the destination remains popular due to the large number of stores, lower prices and laid-back attitude of the merchants.

For some, however, it's time to pack up. After 25 years in the business, Gwyn Brown of Antiquités Gwyn in Knowlton has decided to call it a day. She stopped buying two years ago, and will begin selling off the remaining items in her store to auctions this summer. She still has a picker - a professional buyer who scopes out old homes and auctions for antiques - but says he's slowed down a bit lately.



RECORD FILES

The town of Knowlton has traditionally been a strong drawing card for tourists due to the large number of antique stores that set up in the region.

"He's 91 now," she said. "He's still driving, still looks the same, but he lacks a bit of ambition these days."

....

For a listing of antique stores in the Townships, visit any one of the region's numerous tourist information centres or call the Eastern Townships Tourism Bureau at (819) 820-2020 or 1-800-355-5755. You can also visit their Web site at www.tourisme-cantons.qc.ca. Otherwise, just drive around the villages - you're bound to run into an antique store eventually.



PADDIE'S BOUTIQUE

Fantastic Summer Sale

286-A Knowlton Rd., Knowlton (450)243-6413








Gilles Nadeau
(450) 539-4334 Fax: (450) 539-5331
CANADA
770 Lakeside, Lac Brome (Quebec)

Manufacturers of:
DOCKS ON POSTS
DOCKS ON WHEELS
BOAT LIFTS
FLOATING DOCKS - RESIDENTIAL
FLOATING DOCKS - COMMERCIAL

E-Mail: estrie@docks.qc.ca
Web site: www.docks.qc.ca



DÉPANNEUR
rouge
Restaurant

OPEN 7 AM-11 PM

Summer is here!

The Salad Bar & The Ice Cream Parlour are open.

Lunch daily specials.

It's a pleasure to serve you.

Serving Full Breakfast. Fresh Bread & Croissants every day.

483 Ch. Knowlton KNOWLTON Tel.: 243-0330



THEATRE LAC BROME

at the Knowlton Pub Playhouse, 267 ch. Knowlton

Repertory Season 2000 • June 23-August 19

(450) 242-1395 (450) 242-2270 www.cclacbrome.qc.ca/tlb

Season Sponsor 

BLOODY BUSINESS
BIG MAMA
THE IMPORTANCE
OF BEING EARNEST
BOWSER & BLUE

Monks make total commitment to God



PERRY BEATON/SPECIAL

Spectacular and serene sights await visitors to the St-Benoît-du-Lac Abbey.

Visit the abbey, buy the St-Benoît cheese, even spend the night

By Hélène Gauthier
SPECIAL TO THE RECORD

At the St-Benoît-du-Lac Abbey, you can spend a night in the hostel, buy the famous St-Benoît cheese, or purchase apple cider, books, tapes of religious music, or devotional objects. Or you can simply visit the spectacular abbey which is home to the Benedictine

Monks.

During a recent visit to the abbey, we were introduced to Father Chamberlain and the younger Father Blanchet who pleasantly answered each of our questions, never hinting they are called upon to respond to the same curious queries by thousands of visitors each year.

Yes, they have sources of income, but they are not totally self-sufficient. A small garden produces tomatoes and an apple orchard, provides products for sale as well as subsistence.

CONTINUED ON NEXT PAGE

AUBERGE
LAKEVIEW
INN
125
A N S • Y E A R S

LAURÉAT RÉGIONAL

Hébergement
6 à 49 chambres

★ ★ ★ ★ ★

Les Grands
Prix
du tourisme
québécois

2 0 0 0

Québec
Tourisme
Québec

The winner of the COVETED QUEBEC TOURISM 2000 GRAND PRIX AWARD for lodging goes to the Prestigious Lakeview Inn - where Sir Wilfrid Laurier, Sir Robert Borden and the Right Honorable Arthur Meighen, former Prime Ministers of Canada, stayed - the Lakeview Inn, built in 1874, now an historic multi-award winning antique filled Victorian Inn with 28 rooms and whirlpool equipped studios, offers its guests the visual splendor and ambiance of yesteryear with all of today's comforts. Be pampered with traditional European service while dining by candle-light, select a Grand Cru from our extensive wine list. Breakfast in Spencer's, an authentic English Pub and treat yourself to our famous Sunday Brunch.

50 Victoria St., Knowlton (450) 243-6183

Au Royaume du Steak
STEAK HOUSE

"REAL STEAK LOVERS DINE WITH US"

Table d'Hôte Menu **\$9⁹⁵**

Our specialty is steak but we have a large variety of meals to suit everyone's taste!

Children's Menu *Reservations appreciated*

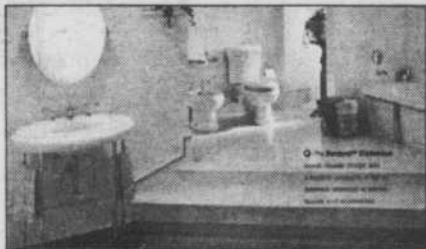
300 Lewis St. W. (facing the arena) Waterloo

539-0811

HEATED
TERRASSE
WHEN
NEEDED

WINE
PROMOTION
EVERY
MONTH

Authorized
Kohler
Showroom



Les Salles de Bain SM et Fils

Whether you prefer traditional or contemporary, Revival is at home in either decor. Simply mix and match from the wide selection of Revival fixtures, faucets and accessories to reflect your own personal style.

1 Main St. West
Magog

843-3323

THE BOLD LOOK
OF **KOHLER.** 1-888-922-3323

'The church faces east...we can see the sun rising'

CONTINUED FROM LAST PAGE

"And yes, we eat apple sauce three time a week for dessert," said Father Chamberlain, cheerfully, adding the monks also have cattle from which

they derive their meat and a cheese dairy, and gift store which is widely known. They also exchange products with other monasteries like the one in Oka and another in Vermont.

The daily life of the Benedictines is totally devoted to God and prayer, communal or private, beginning with their waking moments.

"The church faces east, this way, we

can see the sun rising up through the windows in the morning and it is beautiful," said Father Blanchet.

"The monastic life is an angelical one," said Father Chamberlain. "It is an anticipation of life in heaven, for those who believe in heaven."

"Praise is given to God because He is good, great and wise. Everyone should praise Him," added Father Chamberlain. "One day I heard someone say, 'Those monks are crazy', but I will have to add that we are crazy over God."

"We have been called and we are taking an extreme measure," he added. But while God may do the calling, acceptance into monastic life must be voted upon by other monks in the community.

The monks rarely leave the monastery believing it would be an obstacle to the peaceful and tranquil environment conducive to prayer. At the same time, they have not let technology pass them by, and each monk carries a pager for easy access during the work portion of the day. They read the 'essential parts' of the newspapers and watch television - but only once a month. "Last month was a special month," admitted Father Chamberlain. "We rented Mrs. Doubtfire."

The usual fare is documentaries, election coverage and news about the pope, not more, said Father Blanchet.

During meals, books are read aloud and monks are invited to suggest a book they would like to hear. "I never heard about a request being rejected for a choice of book," said Father Chamberlain with a smile. "I am the one who suggests which books are going to be read, you see, because I am the one in charge of the library. But in the end, the Abbot decides."

CONTINUED ON NEXT PAGE



Laurence Olivier
Boutique
Tél: (450) 538-4004
20 PRINCIPALE NORD, SUTTON, QUÉBEC J0E 2K0

Antiquités (achat & vente), produits de bain. Paniers cadeaux personnalisés
Antiques (buy & sell), bath products. Personalized gift baskets.
Etcetera...



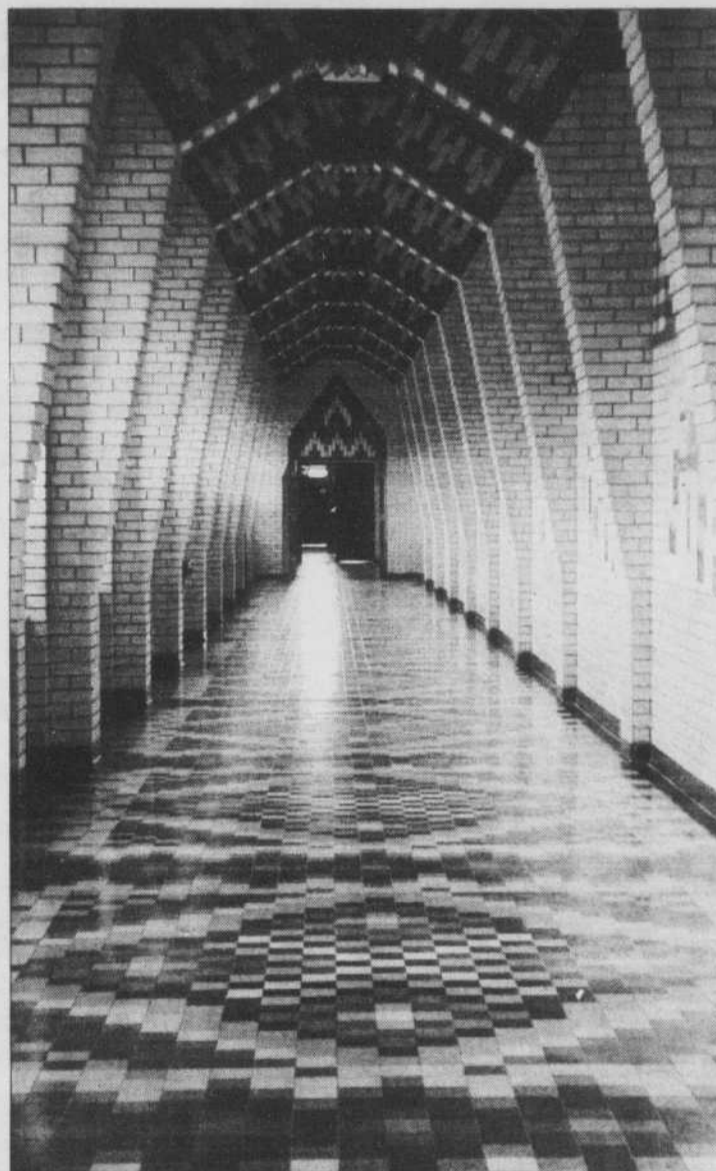
Intérieurs
Sud

Poterie Meubles
Linge de maison
L'endroit idéal pour vos listes de mariage

Découvrez nos produits!
Des cadeaux originaux pour les futurs mariés!
Discover our products!
Super unusual gifts for future brides!

- Nappes, couvre-lits, céramiques, art de la table, herbes de Provence...
- Tablecloths, bedspreads, ceramics, the art of table setting, herbs from Provence...

273 ch. Knowlton Rd., Knowlton J0E 1V0
Tél.: (450) 243-6888 Fax: (450) 243-0844
email: gpsdecoration@qc.airs.com



PERRY BEATON/SPECIAL

The distinctive hall at the St-Benoît Abbey.

Monica *A MUST!*

"A little of everything for almost everyone!!"

- Gifts for golfers, a specialty
- Candles & music for "cocooning"
- Board games & children's gifts
- New! Gifts for baby

The only place in Sutton where you can buy souvenirs of Sutton & Canadian souvenirs; also carry postcards & nice selection of maple products.

6 Principale S. (450) 530-8333
SUTTON, Qc Open 10 to 5, 7 days a week

Quilliams
LAC BROME

MUSSELS All you can eat every Friday evening \$12.95	Sunday BRUNCH 11 a.m. to 2 p.m. \$18.95	BISTRO menu and Table d'hôte every evening
--	---	--

ROOM AND MEAL PACKAGE from \$159 for 2, service included

LOBSTER
(16 - 20 ounces)

& Seafood Festival

Reception and meeting rooms with panoramic view, up to 100
Gift certificates available www.aubergequilliams.com

572, ch. Lakeside, Lac Brome
Rés. (450) 243-0404 1-888-922-0404

LE CAFÉ FLORAL
Café-resto-terrasse

LE CAFÉ FLORAL

Assorted Daily Luncheon Specials
inc. Vegetarian Dish
Special
Weekend Breakfasts
9 a.m. to 11 a.m.

Open 7 days
9 a.m. to 5 p.m. week days
9 a.m. to 6 p.m. weekends

30 ch. Lakeside Knowlton, Québec
450-243-0792

It takes more than a quick visit to understand

CONTINUED FROM LAST PAGE

Humility is another goal monks aspire to achieve. "Humility brings liberty," Father Blanchet explained. "God gave me gifts, but I don't have to use them. For example, I am good at working outside but the Abbot asked me to work in the shop instead, so I do. And this way, I discovered other gifts."

And are they happy with the lifestyle choice they've made?

"If you ask me if I am happy every day, 24 hours a day, I can't always say yes," said Father Chamberlain. "But deep down, I am very happy, and it is the union with God that gives me this happiness."

Father Chamberlain took his first vows in 1942, but he has been in a monastery for 60 years. "When I was young, I served mass in my parish in New Hampshire. Later, in high school, I went to Rhode Island for a retreat with the Trappist monks," he said.

It was there he discovered the monastic life and became intrigued with the calling.

He attended a college in Manchester (N.H.) that was run by Benedictine monks, and decided to join them.

"They just said, 'Come right in.'" It was another story for Father Blanchet. He went to CEGEP and came to the monastery at Saint-Benoit-du-Lac to study for a mathematics test. He returned the following year and at 20, he asked to become part of the community. But the monks found him too young for such a serious decision. He went on to university to study genetic biology and was about to start his masters program but decided return to the monks, and this time he was accepted.

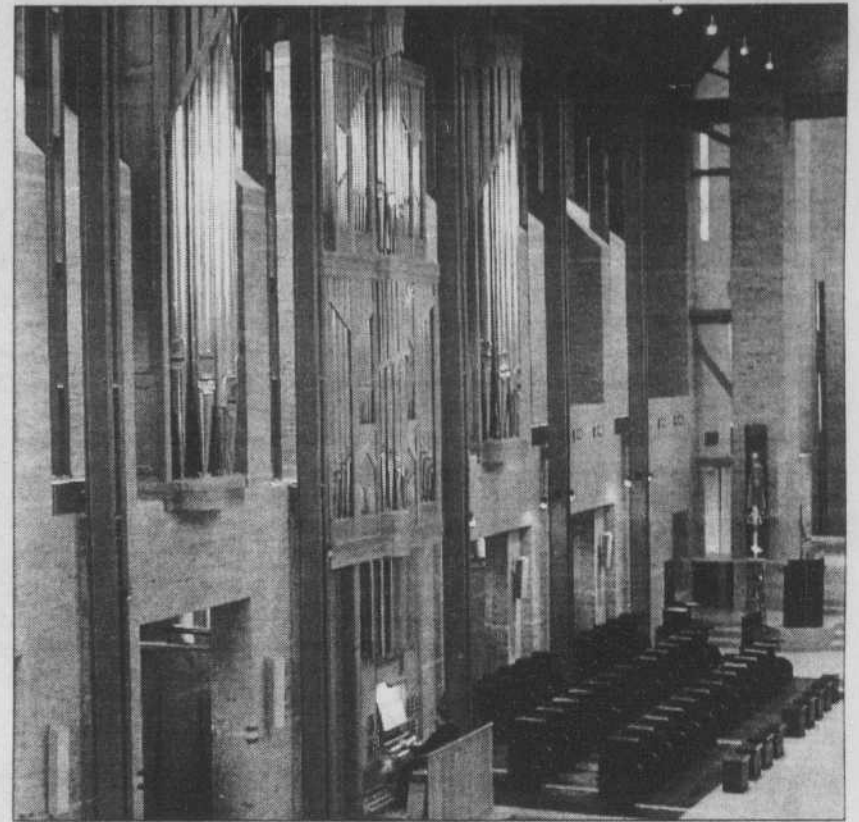
Both Father Chamberlain and Blanchet say it takes more than a quick visit to the monastery to properly understand the depth and breadth of monastic life.

"Some people say, 'I wouldn't go there, it's too silent' but it is not the buildings that are, it is the meeting with God," said Father Chamberlain.

Our meeting finished, Father Chamberlain got up, promising to remember us in his prayers.

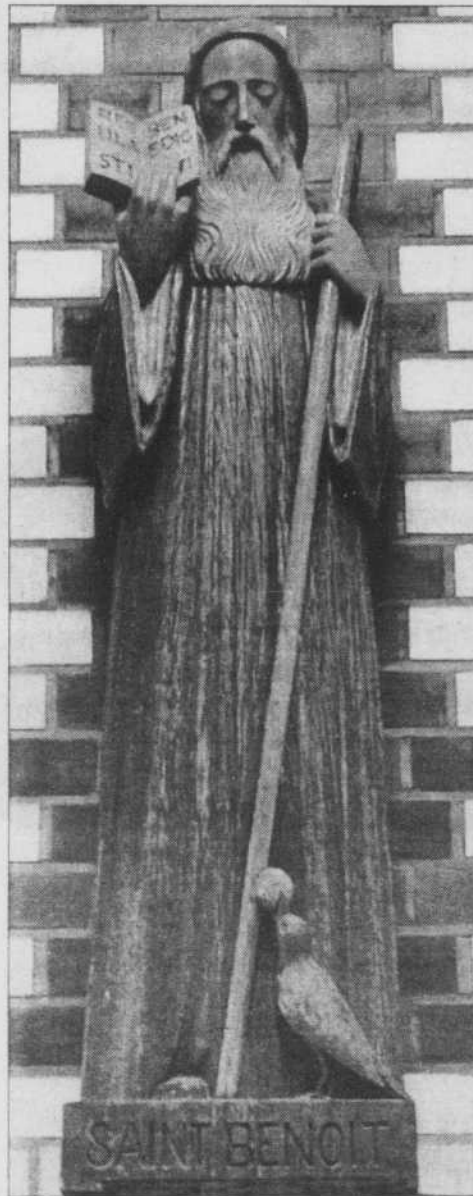
.....

For more information, visit the Web site at: www.st-benoit-du-lac.com/ or phone (819) 843-4080.



The impressive abbey organ.

PERRY BEATON/SPECIAL



**MORE THAN
A STYLE,
A
LIFESTYLE**

Men's ladies' & children's
clothing made in France
Large sizes available.

Armor·lux

255 Knowlton Rd., Knowlton, P.Q. (450) 242-2828

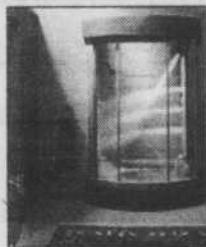
**BUSNEL
ROYAL MER
BUSNEL MARINE
TRANSIT L'AIR DU LARGE
PORTS DE BRETAGNE
BEAUDOUIN
ARMOR LUX**



Come see our
new collection



- Body Spa System
- Steam Unit
- Multi Jets



Les Salles de Bain SM et Fils

Invigoration! There is no other word to describe it!
A series of whirlpool jets are arranged vertically in a shower-like enclosure. Instead of pushing water through water - as in a whirlpool, BodySpa propels it through the air.
So it's just you and the force of the bodyjets.

THE BOLD LOOK
OF **KOHLER.** 1-888-922-3323

1 Main St. West
Magog

843-3323

Monks maintain ancient Benedictine traditions

By Hélene Gauthier
SPECIAL TO THE RECORD

St-Benedict was born in a Christian family around the year 480 in Norcia of Umbria (Italy).

At one point of his life, he felt the need to retreat from the world and started living in a cave to find God through solitude and prayer.

Soon, he set up twelve small monasteries. But around 529, some worries made him travel to Monte Cassino with some friends where he started a small monastery that would grow with time. This was the period of his life when he wrote his book 'Rules for Monks' that is still studied and observed by the monks today.

The monks at the St-Benoît-du-Lac Abbey have in their library an ancient reproduction of the Codex Benidictous (from the Vatican) of the life and rules of St-Benedict. They also have a reproduction of his rules in a printed book dated 1505.

Through his writing, Saint-Benedict shows that he is a level-headed man, in love with God, but also very concerned with people.

In 1901, a civil law in France forced the community of St-Wandrille, in Normandy, into exile. They first went to Belgium and then moved to a farm situated at what is now St-Benoît-du-Lac, in Canada.

The beginning was difficult. Five monks were sent to Canada, but when the First World War ended, officials at the Mother Abbey in France wanted the monks repatriated. To plead for permission to continue to live in Québec, Saint-Benoît-du Lac Abbey sent two monks to Europe, who convinced the monks in France to allow the Canadian Abbey to remain open.

The Abbey of Saint-Benoît-du-Lac was founded in 1912. The exiled monks living in Belgium were allowed to return to France, but never settled in Canada.

In 1938, Saint-Benoît-du-Lac construct-

ed a monastery following the plans of Father Paul Bellot, a French monk.

In 1952, the monastery was established as an Abbey and Father Odule Sylvain was elected as the first Abbot. During his 30 years as Abbot, Father Odule Sylvain allowed the hostelry, the church tower and the crypt of the church to be built by Father Claude-Marie Cuté, a Canadian monk. In 1983, The Father Jacques Garneau was elected second Abbot of Saint-Benoît-du-Lac and in 1990, the church was constructed according to plans by M.Dan Hanganu.

There are currently 52 monks living at the monastery, removed from the world and seeking God through rituals which include meditation, liturgical services and chants.

A Monk's Day

5 a.m. Vigils: Already monks are in the church praying. This 50-minute service shows God that they await His re-

turn. After this, they are free to pray, read spiritual books and have breakfast.

7:30 a.m. Laudes: Monks pray for 30 minutes and sing psalms. As a group, they sing hymns, then go to work, each assigned to a special task.

11 a.m.: Celebration of the mass, complete with Gregorian chants.

12 a.m.: The noon service is held.

12:20 p.m.: Lunch is served and monks have a 45-minute break before returning to work.

5 p.m. Vespers: At this service, monks give thanks for the day that was given to them. They have an hour of spiritual reading in private.

6:30 p.m. Dinner followed by relaxation time together.

7:45 p.m. This is the last prayer together. The day is over and the service ends with a chant to the Mother of God.

Hélene Gauthier is a student at the University of Sherbrooke.

For the savings, choose
IGA all the way!

For your  Air Miles



SIZZLIN' Summer Savings



ENJOY SUMMER
COOKING
& ENTERTAINING
WITH FAMILY &
FRIENDS

OPEN DAILY 8-10 P.M.

472 Knowlton Rd., Knowlton 243-6692



SUPERIOR VALUE

Our MVP Collection is exclusive. You will find the best market price for a product of this category and if you choose to have it installed by our team of experts, the results are guaranteed.

SUPERIOR QUALITY

Our selection of products comes from the largest manufacturers on the planet. The MVP Collection meets strict manufacturing and value norms. In our store, you will find the best brands, many exclusives, the best prices and a team of specialists always ready to make your life easier.

UNITED CARPET
The decorative floor covering solution

25



UNE TOUCHE DE GÉNIE

TAPIS COWANSVILLE
548, RIVIÈRE, COWANSVILLE
(450) 263-4622

RUGS • TILES • HARDWOOD • LINO •
CARPETS • CERAMIC • DECORATION

Abbaye de Saint-Benoît-du-Lac

Depuis 1912, les moines bénédictins mènent à Saint-Benoît-du-Lac (région du lac Memphrémagog, rive ouest) une vie religieuse de forme contemplative d'après la règle de saint Benoît de Nursie (480-547) et selon les constitutions de la congrégation monastique de Solesmes (France). Leur existence axée principalement sur la recherche de Dieu et la prière donne aussi une large place au travail, tant manuel qu'intellectuel, et au ministère pastoral auprès de leurs hôtes et visiteurs.

Les bâtiments de l'Abbaye sont en partie l'oeuvre de Dom Paul Bellot (1876-1944), un moine architecte français de renommée internationale. Son style se caractérise par la recherche de la parfaite harmonie dans le respect des lois géométriques de la nature. S'y sont ajoutés ensuite, selon les plans de Dom Claude Côté (1909-1986), une hôtellerie ainsi que le soubassement et le clocher de l'église abbatiale.

Enfin, celle-ci, parachevée d'après les dessins de l'architecte montréalais Dan S. Hanganu, a été consacrée le 4 décembre 1994.

Une maison d'accueil, ou hôtellerie, permet de recevoir les hommes qui désirent passer quelques jours dans une ambiance de recueillement et de paix. Les dames aussi sont reçues, mais dans une maison voisine tenue par des religieuses.

L'Eucharistie est célébrée, en chant grégorien, tous les jours à 11 h. Les Vêpres sont chantées aussi en grégorien tous les jours à 17 h, sauf le jeudi, à 19 h (de même que le mardi, en juillet et août). Certaines parties de ces prières publiques utilisent la langue française.

Une boutique est ouverte toute l'année, mais fermée tous les dimanches et les jours de Noël, 26 décembre, 1er janvier et Vendredi Saint.

Heures d'ouverture : De novembre à mai inclusivement, du lundi au vendredi, entre 9 h et 10 h 45 puis entre 13 h 30 et 16 h 30. Le samedi, entre 9 h et 10 h 45, puis entre 11 h 45 et 16 h 30. De juin à octobre inclusivement, du lundi au samedi, entre 9 h et 10 h 45, puis entre 11 h 45 et 16 h 30; en juillet et août, entre 11 h 45 et 18 h. On peut s'y procurer des produits de l'Abbaye tels que les fromages et le cidre de pommes ainsi que des livres, des cassettes de musique ou de chants religieux et des articles de piété.

Les visiteurs en groupe sont priés de s'annoncer. À l'Abbaye et surtout dans l'église, une tenue vestimentaire convenable, robe ou pantalon, est de rigueur. Les chiens ne sont pas admis.

Renseignements et réservations:
(819) 843-4080/Télec.: (819) 868-1861/Dames: (819) 843-2340/www.st-benoit-du-lac.com



PERRY BEATON/SPECIAL
La chapelle de l'Abbaye de Saint-Benoît-du-Lac.

LES MARCHÉS

TRADITION

The Gazaille Family



Enjoy
summer cooking
& entertaining
with family
& friends

OPEN EVERY DAY 8 A.M.-10 P.M.

250 Knowlton Rd., Lac Brome
(450) 243-6655



Bistro
du
Lapin Agile

Relais Gastronomique

Discover Quebec's Gastronomy

Le Bistro du Lapin Agile takes great pleasure in inviting you to discover the pleasure of a gastronomical experience. Unique in our region for the gourmet in you.

A subtle mix of the best products that the Eastern Townships have to offer.

*Theatre Package Available
• B&B Package Available

Le Bistro du Lapin Agile
4 Maple
Sutton, Qué
450-538-4355

North Hatley: L'un des joyaux des Cantons-de-l'Est

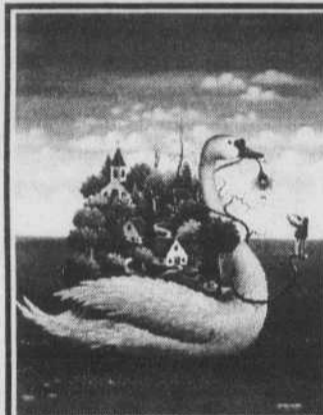


• Antiques
• Gift & Candy Shop

E
m
p
o
r
i
u
m
N
o
r
t
h
H
a
t
l
e
y

Open 7 days
We Buy & Sell

100 Main St., North Hatley • 842-4233



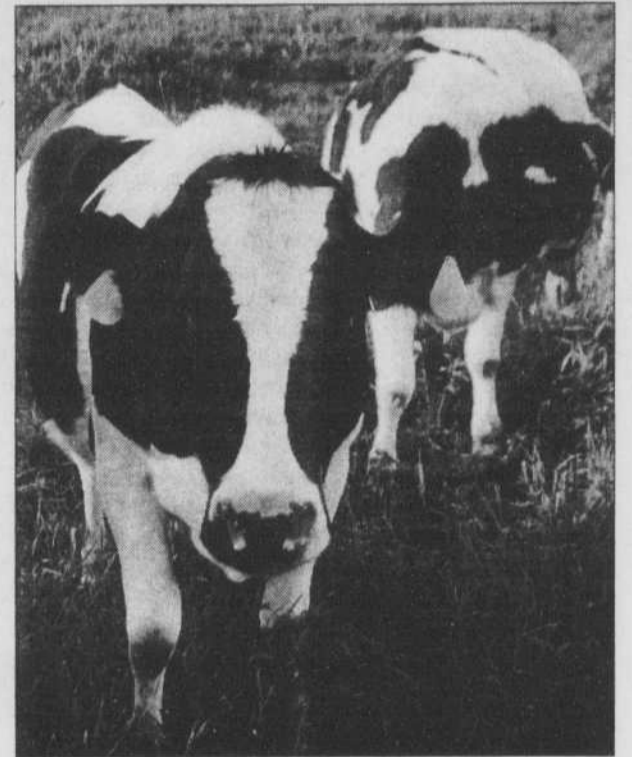
GALERIE
JEANNINE BLAIS
Art naïf
Cards, 2001 calendars
Decorative Plates
100 Main Street
North Hatley, Quebec
(819) 842-2784

Open 7 days a week
from 10 AM to 5 PM

L'un des joyaux des Cantons-de-l'Est, North Hatley est situé sur la rive nord du lac Massawippi. Ce village est reconnu pour ses splendides résidences, auberges et gîtes touristiques dont l'architecture remonte à ses premiers estivants, aristocrates, magnats de l'industrie et grands propriétaires terriens, ayant quitté le sud des États-Unis pendant et après la guerre de Sécession, entre 1860 et 1865. Offrez-vous une visite patrimoniale du village en voiture à chevaux (pour groupes seulement, sur réservation), en communiquant avec Les Randonnées J. Robidas (819) 563-0166 / 1-888-677-8767. Possibilité de pêche sur le lac Massawippi et pêche en étang aux Étangs des Cantons.

North Hatley est aussi renommé pour la qualité et le cachet de ses galeries d'art, de ses boutiques d'artisanat, de cadeaux et d'antiquités. Durant la saison estivale, rien de tel qu'une randonnée à cheval pour admirer les paysages uniques que vous offre cette région. Pour une détente assurée, le Théâtre Piggery vous convie à une de ses productions anglophones. Tout près du village, sur la route 108, Montjoye lance une invitation aux amateurs de ski alpin.

Clin d'oeil historique : C'est à North Hatley que la première association québécoise de protection de l'environnement a vu le jour dans les années 1920 et qu'en 1968 un pêcheur de Sherbrooke a capturé dans le lac Massawippi un es-



turgeon de près de deux mètres de longueur et d'un poids de près de 60 kilos.



Restaurant & Pub

Sur la magnifique rivière Massawippi

Salle à manger et pub
Menu du jour midi et soir
Déjeuners les weekend
Une variété exceptionnelle de bières
Air climatisé / Terrasses

55 RUE PRINCIPALE, NORTH HATLEY, QUÉ.

On the Beautiful Massawippi River

The best in dining-room or pub food
Daily specials for lunch and dinner
Breakfast on weekend
An exciting assortment of beer
Air conditioning / Terraces

(819) 842-2971

Mines Capelton

800, route 108, North Hatley J1M 2A3 (819) 346-9545

Au coeur du plus vieux complexe minier du Canada, vivez une expérience unique en visitant les galeries souterraines d'une ancienne mine de cuivre creusée au pic, à la pelle et... à la chandelle. De plus, on offre sur ce site qui s'étend sur 650 acres de forêt: casse-croûte, boutique, musée, sentiers de montagne, piste cyclable, etc. Location de vélos. Horaire : De avril à octobre (réservation préférable). Entrée (taxes en sus) : adultes 14,95 \$; enfants (3 à 5 ans) : 2,95 \$; enfants (6 à 15 ans) : 8,95 \$; familles : 34,75 \$. Tarifs spéciaux pour groupes. Durée maximale de la visite : 2 h 30.

À proximité

À l'ouest de North Hatley, par la route 108, domine au coeur de la vallée du lac Massawippi la municipalité de Sainte-Catherine-de-Hatley dont l'ancien nom courant anglais est Katevale. À mi-chemin entre la rive ouest du lac Massawippi et le lac Magog, cette municipalité est dotée d'une vue panoramique splendide sur le mont Orford et ses environs. Une autre façon de découvrir un passage magnifique est d'emprunter le chemin North, de North Hatley à Kingscroft en passant par Hatley.

Portrait de la région

Cette captivante région touristique est à quelque 80 kilomètres à l'est de Montréal et à une centaine de kilomètres au sud de Québec. D'une superficie de 13 000 kilomètres carrés, elle s'étend de Granby - Sutton à Lambton - Lac-Mégantic, en passant par Sherbrooke et Magog-Orford. Ses 300 kilomètres de frontière lui confèrent la rare possibilité de vivre au quotidien une ouverture avec les États-Unis. Les Cantons-de-l'Est, c'est l'harmonie de deux richesses inestimables : le charme anglo-saxon et la joie de vivre québécoise !

Le paysage

Les premiers signes de votre arrivée dans les Cantons-de-l'Est vous viennent des montagnes. Lorsqu'on sait que les contreforts des Appalaches composent le paysage de la région, on comprend à quel point la montagne y est omniprésente. Partout une ombre vous suit. Elle se montre parfois discrète; le paysage se compose alors de gracieux vallons. En d'autres endroits, elle se fait beaucoup plus imposante; les sommets, arrondis par le temps, atteignent jusqu'à 1000 mètres d'altitude. Au milieu des collines boisées des Appalaches, se dressent de petits villages mouillés par de paisibles rivières, se dessinent de magnifiques lacs aux eaux invitantes.

Dans les Cantons-de-l'Est, chaque virage dévoile un nouveau paysage. Chaque tournant devient un événement. En toute saison, la splendeur des paysages, d'où exhale la fine odeur des champs et des forêts, invite à des promenades tonifiantes.

Le peuplement des cantons

Les Abénaquis furent les premiers à profiter de cette terre privilégiée par la nature. On leur doit d'ailleurs des toponymes tels que Memphremagog, Massawippi, Mégantic et Coaticook. Vinrent ensuite, après la guerre de l'Indépendance américaine (1776-1782), des Américains demeurés fidèles à la Couronne britannique, les Loyalistes. Après la victoire des rebelles, le gouvernement britannique décida de donner à ses loyaux sujets des terres au Canada, les townships.

Plusieurs milliers de colons s'installèrent donc au XVIIIe siècle dans les Cantons-de-l'Est, alors appelés Eastern Townships. Ils furent suivis, en 1820, d'une première vague d'Irlandais catholiques quittant leur pays suite à son union avec l'Angleterre protestante et d'une deuxième, vers 1840, résultat d'une grande famine en Irlande. Une population majoritairement anglophone peuplait donc les townships à cette époque. Toutefois, vers 1850, les industries du bois et du chemin de fer, qui ont joué un rôle très important dans le développement de la région, employaient beaucoup de Canadiens français. Ces derniers achèteront de plus en plus de terres aux propriétaires de l'époque, si bien qu'au

début du XXe siècle, les townships devenaient majoritairement francophones. Le besoin de trouver un équivalent français à Eastern Townships naquit alors.

L'auteur du mot canton, A. Gérin-Lajoie, déclara avant d'écrire son roman Jean Rivard, le défricheur (1862): «Bien que la scène de mon roman se passe dans les townships, je ne me servirai pas de ce mot qui n'est pas français. La Suisse, où l'on écrit et parle le français, possède des circonscriptions territoriales à peu près analogues à celles de nos townships qui sont appelées cantons. Je vais donc employer ce mot à leur exemple.» C'est ainsi qu'apparut pour la première fois Cantons-de-l'Est. Soulignons que le terme Estrie est aussi utilisé comme appellation régionale, et ce, pour désigner principalement le territoire administratif.

Un riche patrimoine

Les différentes communautés ayant peuplé la région lui ont légué un riche patrimoine bâti, un mode de vie et une mentalité tout à fait particuliers. Ce petit hameau qui s'étend paresseusement le long d'un cours d'eau vous ramènera au siècle dernier.

Cette énigmatique grange ronde, cet inébranlable pont couvert et cette somptueuse résidence victorienne, dispersés aux quatre vents sur tout le territoire, nous rappellent l'époque de la colonisation.

La généalogie

Les personnes intéressées à obtenir des renseignements sur leurs ancêtres peuvent s'adresser à l'un des nombreux centres de recherche généalogique de la région. Les chercheurs sont invités à faire leurs premiers arrêts à la Société de généalogie des Cantons-de-l'Est et aux Archives nationales du Québec. Des recherches peuvent être poursuivies dans d'autres centres spécialisés.

L'ère nouvelle

Longtemps associée à ses mines d'amiante, ses industries du textile et des pâtes et papiers, ainsi qu'à son agriculture, la région s'oriente de plus en plus vers la haute technologie. À plusieurs endroits, on a vu apparaître de nouveaux secteurs comme les équipements médicaux, l'informatique, la micro-électronique et l'outillage de précision.

L'ère nouvelle, c'est aussi, sans contredit, le développement des Cantons-de-l'Est comme destination touristique incomparable, laquelle avec le choix et la qualité de ses attraits et activités bénéficie aujourd'hui d'une notoriété tant nationale qu'internationale.

Les arts et la culture

Le milieu culturel et artistique des Cantons-de-l'Est reflète bien les différentes

communautés ayant peuplé la région. Le biculturalisme se traduit notamment par les multiples salles de concerts et théâtres d'été, dont les célèbres Centre d'Arts Orford et le Vieux Clocher de Magog, ainsi que les galeries d'art, antiquaires, festivals et autres événements populaires.

Hébergement et gastronomie

La région a acquis ses lettres de noblesse en matière d'aubergisme et de gastronomie. Ici, l'accueil commence par un sourire, se poursuit par une cuisine raffinée, souvent élaborée à partir des ressources de la région, et se complète par une chambre confortable. La petite auberge de campagne, le gîte touristique (B&B), le motel familial, l'hôtel luxueux, le condominium ou le centre de villégiature répondent à tous les goûts et à tous les budgets.

Destination quatre saisons par excellence

En toute saison, les Cantons-de-l'Est sont fréquentés par des promeneurs, des villégiateurs et des sportifs sans que cela ne prenne des allures d'envahissement. Ainsi, ce qui fait l'une des caractéristiques de la région, c'est qu'elle a su préserver son environnement et son patrimoine pour vous offrir quiétude et plaisirs.

Now Air Conditioned!



ROYAL BANK
FINANCIAL GROUP

Presents:

Summer Theatre





 JUNE 29 - JULY 15 Forever Plaid by Stuart Ross, directed by Tim French Sponsored by:  ESTRIE AUTO CENTRE	 JULY 20 - AUGUST 5 Communicating Doors by Alan Ayckbourn, directed by Greg Tuck Presented by: 	 AUGUST 10 - 26 Wingfield Unbound by Dan Needles, starring Rod Beattie Sponsored by: 
---	--	---

The North Hatley Theatre's 35th Season!




• Emily LeBaron Art Gallery

• The Posh Pig Restaurant

RESERVATIONS:

(819) 842-2431



The DANDY

230 Tyler St., Ayer's Cliff,
Quebec J0B 1C0

Tel: (819) 838-4599 Fax: (819) 838-1549
www.tourisme-memphremagog.com/ledandy

The INN

Rated ★★★★★ by Tourisme Quebec

Elegant attic suite
(w/private bathroom) & rooms.
Outdoor and cultural activities nearby.
Suite & breakfast: \$100 a day
Room & breakfast: \$70 a day

**The TEA ROOM
& COFFEE HOUSE**

Breakfast • Lunch • Pastries
Authentic afternoon tea & high teas.

The BOUTIQUE

Many teas and unique tea accessories
GIFT PACKS READY TO GO!

The ART GALLERY

Original Inuit art & contemporary art
in a variety of mediums
SUMMER SCHEDULE
Daily: 8:00 a.m. to 8:00 p.m.
Closed on Wednesdays

Golf courses offer something for everyone

By Maurice Crossfield

If you love the game of golf, there's no shortage of options in the Eastern Townships. In all some 50 public and private golf courses dot the region, from par 3 "executive" courses to full-length courses that challenge the abilities of the best. A number of

golf vacation packages are available.

This August the Auberge Bromont will be hosting the Celebrity Invitational 2000. Former Pittsburgh Penguins star Mario Lemieux is recruiting sporting greats to take part in the tournament, and players will be teamed up with the stars. A total purse of \$225,000 has been put up for the event, with \$40,000 going to the tournament winner.

Proceeds from the Celebrity Invitational will go to the Fondation Charles Bureau, which is dedicated to helping young people with cancer. The tournament takes place from August 2 to 6, and will be a fine opportunity to

try out the Auberge Bromont's newly renovated course. Last fall and this spring the oldest course in Bromont was given a \$1.5 million facelift.

WIDE SELECTION

Along with the variety of courses available, golfers also have a wide price selection to choose from. A weekend round can run anywhere from \$24 at the Inverugie course in Georgeville, to \$55 at the Royal Bromont. During the week \$20 will pay for a round at the Waterloo Golf Club, while the Royal Bromont rate drops to \$50.

The Royal Bromont will be hosting the Quebec Junior and Juvenile Championship this July. The 54-hole championship will be shared with the neighboring Parcours du Vieux Village course.

With breathtaking views of Lake Memphremagog close at hand and luxury accommodations, Owl's Head in Vale Perkins promises a little something for everyone. For the golfer, that includes a course designed by renowned architect Graham Cooke. Golf and stay packages are available, and more information can be found at www.owlshead.com.

A QUICK GAME

But if golf is only to be a small part of your vacation plans, shorter courses are available. For the environmentally-conscious golfer looking for an "executive" course, the Lac Brome Golf Club fits the bill perfectly. The course is one of the few to have been recognized by the Audubon Sanctuary System of Canada for its respect of the environment. Chemical use is very restricted, and shorelines are protected. Despite the restrictions the greenskeepers manage to keep the course lush and green throughout the season.

For a complete listing of golf courses in the Eastern Townships, check out the Internet web site of the Eastern Townships Tourism Association, at www.tourisme-cantons.qc.ca.



Speciality: • Glass showers • Mirrored glass

VAST SHOWROOM

Doors — Windows • Sales & Service

We repair • Aluminum & Wood windows & screens
• Store-Front • Insulated Glass



HARDWARE FOR ALL
DOORS &
WINDOWS

1865 Sherbrooke St., Magog (819) 843-2098

24 HR. EMERGENCY SERVICE



In all some 50 public and private golf courses dot the region.

14 PRINCIPALE SUD

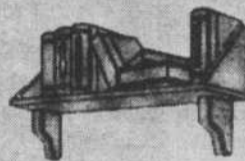
For its 2nd season

Atelier
MAURICE FERLAND

proposes...

RELAX clothing and accessories
MADE TO MEASURE cushions
and hammocks
ELEGANT vases
LOVELY teapots and
ASIAN objects.

Sutton (450) 538-2766
From Wednesday to Sunday 10 a.m. to 6 p.m.



the book nook

English book store
with 7000 titles in stock

- Impressive children's corner
- Gift items: candles, soaps, incense, postcards...
- Mail order service

1 877 460-book
(450) 538-2207

e-mail: booknook@endirect.qc.ca
www.endirect.qc.ca/booknook

Les trois Faucons
Antiquités / Gravures



*Tout collectionneur trouvera
quelque chose à son goût*

*Every antique lover
will find something here*

Schedule - Wednesday to Sunday
inclusive 11 a.m. to 6 p.m.

14-3 Principale sud, Sutton, Qc
(450) 538-3999



Manufacturer's Outlet for
Royal Robbins, High Sierra,
Chlorophyll, Merrell
and American Tourister

Extreme
Value

Open seven days
91 Lakeside, Knowlton, 450-243-0123

**Discover the natural treasures
of the Eastern Townships.**

*Experience breathtaking views, beautiful forests,
pristine streams and hidden lakes.*

*Inquire about our guided nature hikes,
cycling tours and kayak runs.*

*We are also preparing excursions for
birders and photographers.*

We will develop specialized programs for groups.

Tours for all abilities and experience.

Seeing E.T. on wheels is new trend

By René Bruemmer

With more than 450 kilometres of off-road bike trails and thousands more on the region's picturesque country roads, the Eastern Townships has begun to distinguish itself as one of the premier destinations for bicycle tourists in the province.

The distinction is so widespread, local tourism officials say it has become one of the region's greatest drawing cards, estimating more than a million visitors come each year to sample the routes.

"We did a survey of about 4,000 people who visited the Townships last year," Eastern Townships Tourism Board executive director Alain Larouche said. "Most of them mentioned cycling as one of the best activities the region had to offer."

Small wonder. The area has gone to great lengths to create an

integrated system of bike paths, many of them running on old railway beds through forests and beside rivers, that connect entire regions and are accessible for all classes of riders.

In addition to its scenic attributes, the Townships offers a wide range of tourism draws for cyclists of all ages, so riders can combine the joys of fitness and the great outdoors with recreational timeouts ranging from shopping for antiques to a visit to UFOland.

The first attraction is the area's varied topography, with thick forests giving way to rolling hills and cultivated farmland, and even mini-mountains for the more fit seeking heaving bosoms and spectacular lookouts.

The local tourist brochure must be one of the few in existence that cautions riders to "Look out for deer. The Townships is home to over 80,000 of these fleet-footed animals and they can be a hazard to cyclists."

Numerous trails link the several picturesque villages that dot the countryside, many situated on the borders of lakes and rivers.

Cycling trips can be broken up with visits to local museums or educational interpretative centres such as the old Capelton copper mine, which gives a glimpse into the province's history, as do the many small graveyards and covered bridges.

There's even one bike path in the Dunham region called "The Wine

Route, since it runs by 10 different wineries. Bringing along a designated cyclist is suggested.

Recognizing the growing trend towards combining fitness and education, the local tourism board has created a brochure this year called "Cycling the Eastern Townships" which provides detailed cycling maps of nine separate regions, including Granby-Bromont, Brome-Missisquoi, Memphrémagog, Sherbrooke and its surroundings, Coaticook and Mégantic.

Each map details the type, difficulty level and length of the trails and gives an extensive listing of the tourism attractions, restaurants and auberges available in each area.

For merchants such as Kevin Ryan, owner of Le Dépôt du la Vallée Massawippi bike rental shop situated at the beginning of the 13-km Lennoxville to North Hatley rail bed bike path, the resurgence in cyclo-tourism has guaranteed his livelihood and spawned clever spinoffs. Statistics from 1996 estimated up to 150,000 bikers used that bike path in one year.

Testimony to its popularity: the builders of the "Green Route", the cycle path that will traverse the entire province, and the minds behind the Trans-Canada trail, have rerouted to include this trail on their paths.

Cyclists departing from his shop have the option of biking up to North Hatley for 90 minutes, visiting the village and taking rented kayaks or canoes back along the Massawippi River in about three hours while his employees return the bikes.

Arthur Charby

- Landscaper
- Landscaping
- Fences
- French Drain
- Patios
- Stone Walls
- General Caretaking
- Lawn & Tree Maintenance
- Tree Cutting & Clearing



Tel.: **(450) 243-0023**



da JoliVent

Need to get away?
Want to make time for yourself?
Wish you could savour culinary delights?

Well, you can...

The auberge

First and foremost the charm and traditions of JoliVent date back a century. Generations of guests have stayed at this resort, often coming by train.

Its ten charming rooms are quiet and comfortable, with private bathrooms.

We also offer you a library, games, a large lounge with a soothing fireplace and a refined little bar.

Dining

Our Chef, Hans Christiner, prepares a European style seasonal menu with Asian highlights: world class dining.

The site

A large private property, 115 acres in the Eastern Townships. Meadows, forests, walking trails (crosscountry skiing in winter), a pond stocked with trout, a semi olympic sized swimming pool, private access to Lake Brome, a nature lover's dream.

And if one chooses to explore a little further, just about everything is available within minutes: golf courses, ski slopes, tennis courts, bicycle trails, sailing, riding... Unless just strolling through Knowlton, a loyalist town with its unique little shops, appeals to you.

Room and breakfast: \$80 and up.
Table d'hôte: starting at \$27.
All-inclusive specials.
Reduced rates for longer stays.

Tél.: **(450) 243-4272**

Fax: (450) 242-1943
Email: jolivent@sympatico.ca
667, chemin Bondville, Foster, Lac-Brome
(Québec) J0E 1R0

SUTTON
HÉBERGEMENT • ACCOMMODATION
DIVISION DE: LES IMMEUBLES DYNAMIQUES COURTIER AGRÉÉ

LOCATIONS • RENTALS
CHALET • CONDOS • HOTELS • AUBERGES • B&B • GITES

Informations: Tél: (450) 538-2646 Fax: (450) 538-3989
Réservations: **1-800-663-0214**
Web: www.immeublesdynamiques.com
E-mail: hebergement@immeublesdynamiques.com

*Vous voulez louer votre...
You want to rent your...*

Maison de campagne / Country House
Chalet • Condo

*Nous louons...
We rent...*

À la semaine / By the Week
À la saison / By the season
À l'année / Yearly

Heures d'ouverture pour l'été Summer Opening hours
TOUS LES JOURS: DE 10H À 17H EVERY DAY: 10 A.M. TO 5 P.M.
7 JOURS SEMAINE 7 DAYS A WEEK

10-2 RUE PRINCIPALE NORD, SUTTON, QUÉBEC J0E 2K0

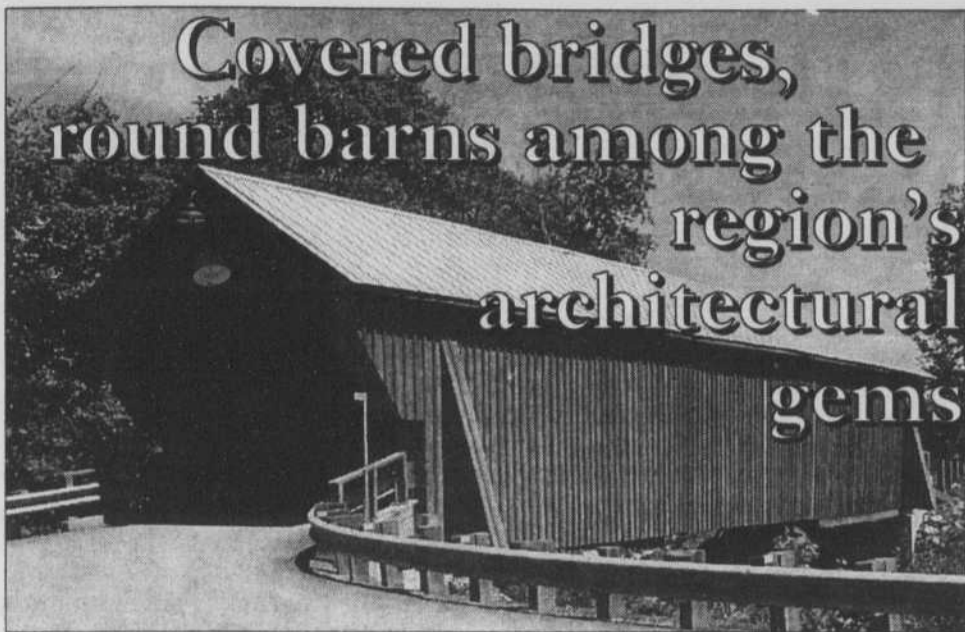
EURO-SPA

*For a relaxing retreat to rejuvenate
your only choice is the Euro-Spa
(a truly genuine European spa).*

Hydrotherapeutic baths, massages, body wraps
Daily lunch buffets,
Saturday night gastronomic buffet
Sunday brunches

**&
GIFT CERTIFICATES**

For information call
1-800-416-0666 450-243-0666
455 de l'Église St-Ignace de Stanbridge



MAURICE CROSSFIELD

The Freeport covered bridge in Cowansville.

By Maurice Crossfield

The Eastern Townships boasts an impressive variety of architecture, most notably its covered bridges and round barns.

At one time hundreds of the covered bridges dotted the region. Built mainly to protect the timbers from the ravages of winter, they became known as places where lovers might steal a first kiss. Others chose the bridges as a place to sneak a forbidden cigarette.

But while the roofs of these bridges were designed to keep the elements at bay, snow was brought inside in the winter to allow the runners of the horse drawn sleds to pass more easily.

With the arrival of the automobile, covered bridges became less and less popular. Those that survived suffered

badly from the stress of handling the weight of cars and trucks, and as they fell into disrepair they were replaced by more modern structures.

Nevertheless a number of fine examples still stand in the Townships, many lovingly restored to their original grandeur. While many are no longer in active use, several, like the Freeport bridge in Cowansville or the Milby covered bridge, still accommodate dozens of cars every day.

For the architectural connoisseur, examples of the Howe, Kingpost and Town bridges can be found. Cookshire's covered bridge is one of the oldest in Quebec, built in 1837. Not far from the Vermont border is the St-Armand covered bridge, built in 1845.

CONTINUED ON NEXT PAGE





OWL'S HEAD GOLF

SKI • GOLF • TENNIS • MARINA

Enjoy a golf getaway at one of Quebec's best resort courses - Winner of the Gold Medal as the best resort golf course in Quebec by the publication "Golf International" Fall 1999 issue.

Packages include: 1 round of golf with motorized cart 1 night's accommodation 1 supper 1 breakfast	Starting from	\$103^{39*}	*per pers. dbl. occ., taxes extra
--	---------------	----------------------------	-----------------------------------

181 ch. Owl's Head, Mansonville QC

Lodging and package reservations - 1-800-363-3342

Golf (450) 292-3666

Internet: <http://www.owlshead.com>

e-mail: info@owlshead.com



CUISINE ET CIE...


DANSK* Le Creuset Trudeau

Custom made to order furniture.

Antique reproduction furniture.


All for your kitchen needs.

OPEN 7 DAYS - 10:00 a.m.-5:00 p.m.




120 Bromont Blvd., Bromont • (450) 534-3000

Le **POINT DE MIRE** au centre-ville



Bistro
Terrasse
Spectacles
Antiquités
Importations
Cadeaux



182, rue Wellington Nord
Sherbrooke • 562-1800

À surveiller cet automne:
www.clicantique.com

Diners d'affaires

Du lundi au vendredi à compter de 10h00.

Menu à la carte ou spécial du midi.

Soupers spectacles


Avec Paul Shine

Les jeudis et vendredis sur la terrasse de 19h00 à 22h00.



Brunch

Les samedis et dimanches dès 10h00.



No lack of hiking, camping or fishing opportunities

By Maurice Crossfield

You'd better bring along a good pair of hiking shoes if you want to test out the selection of hiking and camping areas in the Eastern Townships.

Dozens of hiking trails crisscross the region, offering a look at every available type of terrain, from wet-

lands to mountain peaks. Many of the larger networks have camping areas, while more than a dozen local municipal trails offer interesting outings for day trippers.

If long distance is your thing, the Sentiers de l'Estrie has 160 km of trails. The nature path links Kingsbury to the Sutton Mountains, passing through Mount Orford Park. A trail pass is \$20 per person per year, or \$25 per family.

While passing through Mount Orford Park, hikers can take advantage of the 80 km of trails there. The park offers a variety of challenges, from well groomed walking paths to rough mountain hikes.

At the eastern end of the Townships, Mount Megantic Park has 90 km of trails on its Sentiers Frontaliers. The trails provide access to several mountains close to the U.S. border, including Mount Gosford, the highest peak in the Townships at 1,189 metres above sea level. An observation tower on the peak provides 360-degree viewing of the surrounding countryside.

The Sutton Mountains are best known for their skiing, but the reputation of the 60 km of hiking trails is also growing. The forested trails of the Parc d'environnement naturel de Sutton are regularly patrolled, and offer sleeping areas for longer excursions.

Another spectacular sight is the Coaticook River Gorge. Bcasting the longest suspended bridge in the world (169 metres), the trails wind through the deep gorge, giving hikers a close look at the natural history of the gorge. Two observation towers provide a unique vista of the area.

For the angler in the family there is no shortage of fishing areas in the Townships. Numerous lakes and rivers provide ample opportunities to catch anything from catfish to rainbow trout to landlocked salmon.

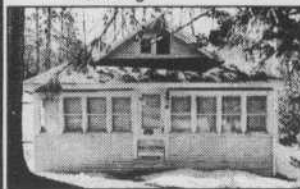
If finding your limits appeals to you, adventure trips are also available. Magog's Adrenaline Adventure School offers a wide selection of activities, from rock climbing to dog sledding to white-water kayaking. This year Glen Mountain Park near Brome Lake has also expanded its activities to include outdoor adventure.

For more information on the outdoor activities available in the Eastern Townships, check out the Internet at www.tourismecantons.qc.ca.



Bedford Countryside: Large ranch style house on wooded lot with mountain view. Close to village services but country privacy & taxes. 4 bdrms, 2 baths, large kitchen with solarium & screened porch, dining room, den & living room with stone fireplace. Wood & slate floors. Family room (fireplace) & double garage in basement. 1 acre lot with 3.5 mowed acres facing for privacy and view. **\$175,000 for entire property.** House possibly available without facing lot.
(450) 248-3323 (business hours)
(450) 248-0160 (evenings, weekends, before 9:00 P.M.)

PATRICIA BILODEAU-MACIEJ
GROUPE SUTTON
Affiliated Agent **823-7474**



Summer cottage (3-season), furnished, 4 bedrooms, quiet sector, 55 feet x 100 feet lot. New price. Access to Lake Massawippi near Ayer's Cliff.

2 lots, 83 feet x 342 feet each, Dufferin St., Stanstead, near Auto. 55. Sold separately or together.



IMMEUBLES Ann Stafford B.A., F.R.I.
Chartered Broker
1041 Main St., Ayer's Cliff
(819) 838-4678
e-mail: stafford@abacom.com
Fax: 838-4241 www.royal2.com



LAKE MASSAWIPPI: Country home on hill overlooking lake, 600' lake-frontage, 259 acres, dramatic view, facing west. Landmark property in excellent location near North Hatley.

LAKE MASSAWIPPI: It's what summer was made for! Sun, sand, views, plus unique chalet, interior with a super finish in natural wood. Three bedrooms on main floor plus finished basement. Windows facing lake with fabulous views.



Bridges and barns



The round barn in West Brome.

barns in the Eastern Townships, many of which are still in use today.

Two theories have been put forward as to why the deeply religious Quaker settlers built round barns. One is that the construction protected the buildings from the ravages of strong winds. The other, and possibly more interesting theory, is that the round barns were built to keep devils from hiding in corners.

Good examples of these interesting-looking barns can be found in Barnston, near Way's Mills, in Austin near the St-Benoit-du-Lac abbey, and in West Brome.

In the tiny village of Mystic, near Bedford, stands a 12-sided barn, built like an old railway roundhouse in 1899.

In its heyday horse drawn wagons could enter the second floor, be unloaded and then rotated on a turntable so the horses could walk out instead of having to back up.

The barn, along with a wide variety of historical artifacts, is still owned by the Walbridge family, who built the barn and today dedicate themselves to preserving their family's and the region's history. In one of the most picturesque villages in the Townships, this unique structure dominates the landscape.

CONTINUED FROM LAST PAGE


The McVitty/McKerry bridge near Gould in the municipality of Lingwick is the longest in the region, at 63 metres.

Other fine examples of this unique type of bridge can be found in Brigham, Capelton (now used as a footbridge near the bike path), Hatley Township and Notre-Dame-de-Stanbridge.


The Drouin/Spafford covered bridge at Compton Station was the focus last year of a campaign to have it restored rather than torn down.

ROUND BARNS

The Quaker influence is widely credited with the construction of several round



MUSÉE J. ARMAND BOMBARDIER



Expect to be surprised...

1001, avenue J.-A.-Bombardier,
Valcourt (Quebec) JOE 2L0
Tel.: (450) 532-5300
Web Site: www.fjab.qc.ca/museejab



Museum Collection

Museum Opening Hours

From May 1st to September 4th:
7 days a week from
10 a.m. to 5 p.m.
From September 4th to April 30th:
Tuesday to Sunday from
10 a.m. to 5 p.m.

Plant Tour

On reservation, 14 years old
and over, weekdays

Going to the zoo has never been such an adventure

Granby Zoo features many rare and endangered species

By Rita Legault

After more than 50 years, the Granby Zoo is undergoing a wave of popularity thanks to the development of Amazoo - an award winning concept that is giving an essential boost to the non-profit organization.

Thanks to its highly successful water park, the Granby Zoo brought home the grand prize at the Quebec tourism Grands Prix gala in Quebec City in May for large attractions that greet more than 100,000 visitors a year



The main attraction at the Granby Zoo remains the animals.

Billed as family river adventure, the aquatic playground includes the largest wave pool in Quebec as well as the Cunucunoma adventure river and restaurants and shops under real palm trees.

Director Mario Limoges said recently that the non-profit organization, which has been around for more than half a century, was having a hard time attracting enough visitors to afford adequate housing and food for the more than 1000 animals at the zoo.

Limoges said surveys showed families came every three or four years and spent four or five hours there. Therefore, the board had to come up with activities that would keep them for longer visits and bring them back more often.

During its strategic planning, the board came up with the Amazoo water park concept - an innovative idea for a zoo. Built last year, Amazoo attracted almost 500,000 to the zoo last sum-

mer - an increase of 37 per cent. He said visitors also spent more time on the site and a survey showed most intend to come back next year.

Another recent innovation is the Discovery Hall with interactive exhibits created from the animals that have passed away at the zoo. There are pelts you must match with pictures of the animals who wore them, paws and bird feet to match pictures of their

owners as well as stuffed animals and skeletons. There are also x-rays of animals, including a tortoise who died from swallowing a penny a careless visitor dropped in its enclosure.

Louise Labarre, a biologist and educator said the exhibit was developed from the comments of visitors who were unable to interact with the animals and who wanted things to touch.

CONTINUED ON NEXT PAGE

Township Treasures

PRIVATE ESTATE: Well appointed, spacious brick residence featuring art-Deco kitchen, panelled study, large dining room, gracious salon and solarium. Upstairs are the master bedroom suite, three large bedrooms, maid's quarters and billiards room. Privileged setting on 7 acres with double garage, rock garden, mature trees, pool, pavilion. Dare to compare! \$285,000.

TOWN SETTING - COUNTRY VISTAS: Pamper yourself with this lakelike California style executive bungalow. Designer kitchen, panelled dining room, main floor master suite and elegant living area featuring sweeping views of lake and mountains. Lofty trees, private garden and pool complete this offering. A visit will convince you! \$215,000.

1200 ACRES of forests and streams with unparalleled mountain views. Zoned for your palace or your project.

Sharyl Thompson
 Affiliated Agent
 Royal LePage Action Chartered Broker
 Personal pager: (514) 854-1350
 Email: sharyl@total.net
 Telephone: (450) 266-6888



Couleurs urbaines SYMPOSIUM d'artistes-peintres

3^e édition

du 26 au 30 juillet 2000

Sous la présidence
d'honneur de
Luc Senay



75 artistes à
l'oeuvre durant
5 jours

• Plus de 200 toiles en
exposition sous le
chapiteau

• Ateliers et démonstrations

• Le dimanche :
improvisation artistique
sous la direction de
Luc Senay

Nouveauté : tous les jours !

ENCANS SILENCIEUX
Faites une offre et
procurez-vous une oeuvre
originale à prix fort
intéressant.



C'est un rendez-vous au Centre-Ville de Granby
Informations : 1 877 375-8338 ou (450) 375-4661

Musée
des
beaux-arts
de
Sherbrooke

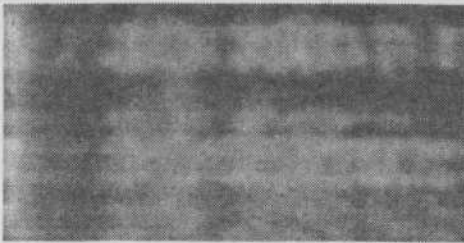


241, rue Dufferin
Sherbrooke (Québec)
J1H 4M3

Karsh & Nakash. Famous Portraits

Churchill, Picasso and Hemmingway are spending the summer at the Sherbrooke Museum of Fine Arts. Visit our exhibition of photos made famous by the international renowned Yousuf Karsh and his mentor and uncle George Nakash. Also don't miss the exhibits of the well-known sculptor, Armand Vaillancourt and our permanent collection. Opening hours are from Tuesday to Sunday from 11 a.m. to 5 p.m. Wednesdays till 9. For further information call: (819) 821-2115.

Granby Zoo now concentrating on exotic and threatened species



UNIVERSITÉ
BISHOP'S
UNIVERSITY

CONFERENCE CENTRE
OPEN MAY 15-AUGUST 30 ANNUALLY

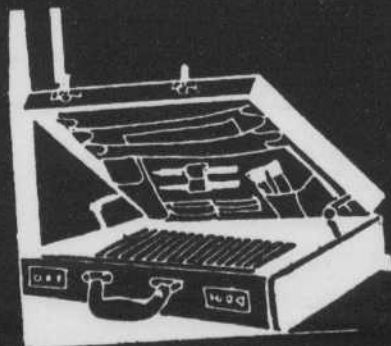
*Did you know
you can...*

- HOLD ASSOCIATION/
COMPANY MEETINGS
OR CONFERENCES AT
BISHOP'S?
- HAVE A FAMILY
REUNION AT BISHOP'S?

*Why choose
Bishop's?*

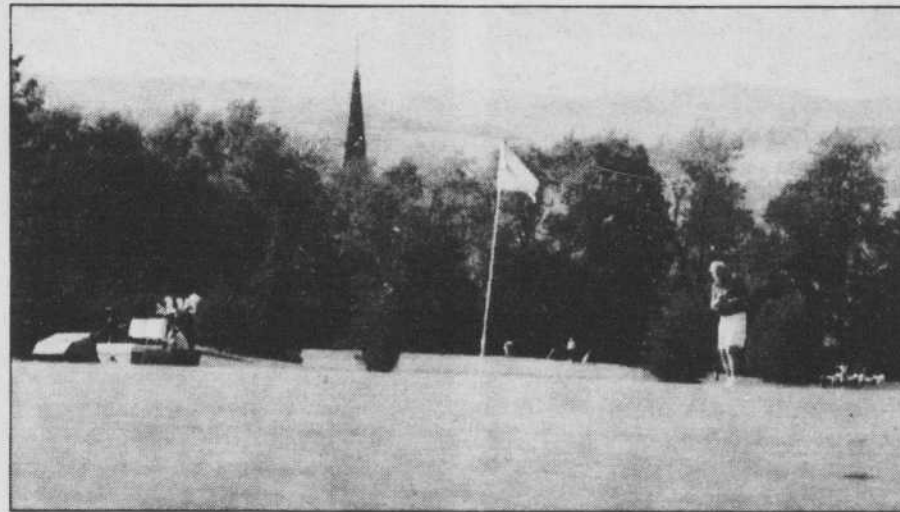
- BECAUSE WE HAVE
SUPERB FACILITIES AND
OFFER EXCELLENT
SERVICE
- BECAUSE WE ARE
INEXPENSIVE
- BILINGUAL SERVICES

For more information: Visit our
conference website at
www.bishops.ca
or call (819) 822-9651
or 1-800-567-2792 ext. 2651



RECORD FILES

*Discover the beauty
of the Eastern Townships!*



9 Holes
Excellent
conditions



Since 1903

*An
enchanting
site
that will
charm
you*

For reservations or information call:
(819) 837-2966

CONTINUED FROM LAST PAGE

Of course the main attraction at the zoo remains the animals. Over the past few years, the zoo has been modifying its exhibits to concentrate more on exotic and threatened species.

Recently Butch the polar bear, who was widowed this winter, was sent to the zoo which specializes in species native to Canada. Other Canadian and Quebec species will also disappear over the next few years to make way for more exotic breeds which are being regrouped based on the geographical regions they came from.

Last summer, the zoo launched its Afrika pavilion - an exhibit which aims to introduce families to animals from the African tropical forest including the only gorillas in Quebec as well as monkeys, lions and African birds. The popular Reptile House has also been transformed into a South American pavilion with snakes and other reptiles and small mammals.

Most of the felines at the Granby Zoo are in the cathouse. All of them are species in danger of extinction including the mammoth Siberian Tigers and the comely snow leopards. There are also leopards, jaguars, lynx and cougars.

This summer, the zoo will feature a special exhibit entitled Nine Frogs and A Toad from the Redpath Museum in Montreal. It features frogs and toads from Quebec.

For more information the zoo call 1-877-472-6290 or 1 877-Granbyzoo.



YOU'RE ONE DRIVE AWAY FROM BEING AMAZED.

0% FINANCING

AVAILABLE ON ALL SONATA AND ELANTRA SEDANS!

SONATA GL

SONATA GL



LEASE FROM
0% OR \$229*

PURCHASE FINANCING!
on all Sonata models
Up to 36 months

PER MONTH/48 MOS.
\$1,950 DOWN PAYMENT

Take the fast track to mid-size luxury in the Sonata 2000. It comes standard with:

- 149 H.P., 2.4 L., DOHC engine
- 4-speed automatic transmission
- Air conditioning
- Cruise control • Dual front airbags
- ETR AM/FM stereo cassette • Heated power side mirrors
- Power windows and door locks
- And much, much more!

STANDARD FEATURES*	HYUNDAI SONATA GL	CHEVROLET MALIBU SEDAN	HONDA ACCORD SEDAN DX	TOYOTA CAMRY SEDAN CE
MSRP	\$19,995	\$22,050	\$22,000	\$22,310
Engine Type	DOHC 2.4 L	OHV 3.1 L	SOHC 2.3 L	DOHC 2.2 L
Automatic Transmission	Standard	Standard	Standard	Standard
Air Conditioning	Standard	Standard	Standard	Standard
Power Windows	Standard	Standard	Standard	Standard
Power Door Locks	Standard	Standard	Standard	Standard
Heated Power Mirrors	Standard	Standard	Standard	Standard
60/40 Split Folding Rear Seats	Standard	Standard	Standard	Standard
Cruise Control	Standard	Standard	Standard	Standard
Roadside Assistance	36 mo./60,000 km	36 mo./60,000 km	60 mo./100,000 km	36 mo./60,000 km
Powertrain Warranty	60 mo./100,000 km	36 mo./60,000 km	60 mo./100,000 km	60 mo./100,000 km

ELANTRA GL

ELANTRA GL



LEASE FROM
0% OR \$199*

PURCHASE FINANCING!
on all Elantra Sedans
Up to 36 months

PER MONTH/48 MOS.
\$1,895 DOWN PAYMENT
FREIGHT AND P.D.E. INCLUDED
\$0 SECURITY DEPOSIT

All the comfort your family needs and sporty features you want for 2000.

- 2.0 L., DOHC, 140 H.P. engine
- Dual front airbags
- Remote fuel filler and trunk release • Tilt steering
- 60/40 split folding rear seat • ETR AM/FM stereo cassette
- And lots more!



TIBURON COUPE

TIBURON



LEASE FROM
4.8% OR \$239*

PURCHASE FINANCING!
on all Tiburon models
Up to 48 months

PER MONTH/48 MOS.
\$1,895 DOWN PAYMENT
FREIGHT AND P.D.E. INCLUDED
\$0 SECURITY DEPOSIT

Driving excitement plus, in this totally re-styled sports coupe with features like:

- 140 H.P., 2.0 L., DOHC engine • 5-speed manual overdrive transmission • Dual front airbags • ETR AM/FM stereo cassette • Rear spoiler • 15" alloy wheels • Fog lamps • Power windows • And lots more!

ACCENT GS 3-DR

ACCENT GS 3-DR



LEASE FROM
4.8% OR \$179*

PURCHASE FINANCING!
on all Accent models
Up to 48 months

PER MONTH/48 MOS.
\$500 DOWN PAYMENT
FREIGHT AND P.D.E. INCLUDED
\$0 SECURITY DEPOSIT

The all-new Accent is a sporty, fun-to-drive, economy car loaded with:

- 1.5 L., 92 H.P. multi-valve engine • Driver's side airbag • 5-speed manual overdrive transmission • Tachometer • Dual exterior manual remote control mirrors • 60/40 split folding rear seat • Remote release fuel filler door
- and much, much more.
- CHECK OUT THE GREAT LEASE RATE ON THE 3-DOOR GSI.

*Leasing program available from Hyundai Financial Services based on new 2000 Accent GS 3-Door MSRP from \$11,995, 2000 Elantra GL Sedan MSRP from \$14,875, 2000 Tiburon Base MSRP from \$18,995, 2000 Sonata GL MSRP from \$19,995, interest rate 5.38%/4.72%/6.77%/5.24%, \$179/\$199/\$239/\$229 per month for a 48 month walkaway lease. Total lease obligation of \$9,092/\$11,447/\$13,367/\$12,942 and optional purchase price of \$5,299/\$5,814/\$9,327/\$9,987. Down payment of \$500/\$1,895/\$1,895/\$1,950, plus first monthly payment required. Security deposit (0.05/0.05/\$239/\$229). Freight and P.D.E. for Accent, Elantra and Tiburon included, for Sonata extra. Taxes, license and \$350 administration fee extra. 20,000 km mileage allowance per year applies. Additional km charge of \$0.10. **MSRP for 2000 Accent GS 3-Door from \$11,995, 2000 Elantra GL Sedan from \$14,875, 2000 Tiburon Base \$18,995, 2000 Sonata GL from \$19,995. All MSRP prices exclude freight, license, P.D.E. and taxes. Dealer may sell for less. †0.0% financing available on all 2000 Elantra and Sonata Sedans for 24 or 36 month terms. Financing example: \$10,000 at 0.0% per annum equals \$277.80 per month for 36 months. C.O.B. is \$0.00 for a total obligation of \$10,000.00. 4.8% financing available on all 2000 Accent and Tiburon models for 24, 36 or 48 month terms. Financing example: \$10,000 at 4.8% per annum equals \$229.40 per month for 48 months. C.O.B. is \$11,011.20 for a total obligation of \$11,011.20. All purchase and lease offers are for a limited time O.A.C. and may not be combined with any other offer. See dealer for details. ‡Based on 2000 competitive manufacturers' published information. © The BEST BUY SEAL is a registered trademark of Consumers Digest, Inc., used under license.

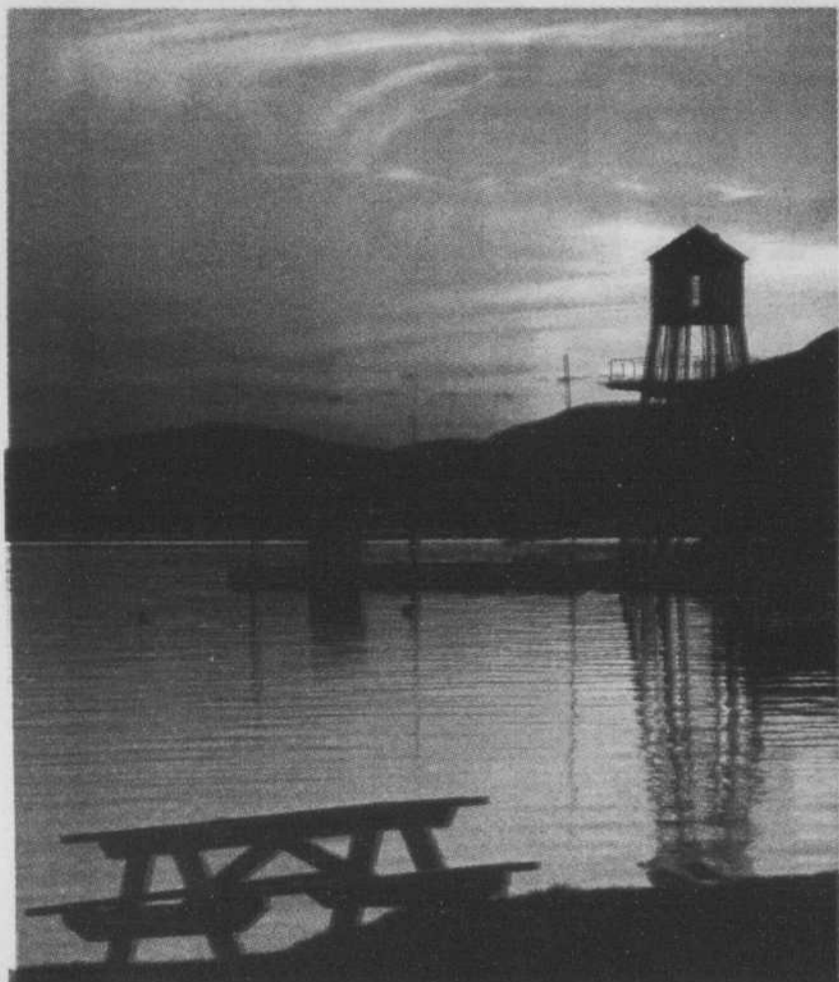
Yes, we will advise you in English

HYUNDAI GRANBY
1196 PRINCIPALE, GRANBY
378-4666
Toll free: 1-888-549-8632



5 yr/100,000 km
Powertrain Warranty
3 yr/60,000 km 24-Hour Roadside
Assistance Program





Beautiful memories to take home with you

PHOTOS BY PERRY BEATON/SPECIAL TO THE RECORD

For more information on the Eastern Townships, call the Eastern Townships Tourism Bureau at 1-800-355-5755 or visit its Web site at www.tourisme-cantons.qc.ca

You can also pick up a copy of The Record newspaper five days a week. The Record is jam-packed with ideas on what you can do in the Townships every day. We hope you've enjoyed this special issue.



1216-1218 Stanley,
Montreal
(514) 871-8186



GRAND PRIZE
L'EXCELLENCE
DU FESTIVAL



78 Lakeside, Knowlton
(450) 242-5801



Au Trois Canards... en ville
&
Au Trois Canards - Knowlton

The Best Restaurants in the Eastern Townships
PARTICIPATING DUCK FESTIVAL RESTAURANTS

WEEKLY TABLE D'HÔTE
ADAPTED TO EACH SEASON

Open 7 days 11:30 a.m.-11:00 p.m.

78, Lakeside, Knowlton Tél.: 450-242-5801

1216-1218 Stanley, Montreal Tél.: 514-871-8186



PLACE PRIMEVÈRE

1973, Leclair

Waterloo

(450) 539-4897



You will feel right at home in the lounge



APARTMENTS FOR RETIRED PERSONS

- For autonomous and semi-autonomous persons
- Service by bilingual & qualified personnel
- Outstanding cuisine & housekeeping services
- Concrete construction with balcony in every unit

Privately owned and operated by
Mireille & Marc M. Bienvenu

Who reside on premises