

Montreal's Reception to Hero of Kandahar and Pretoria: Earl Roberts Entering Auto at City Hall



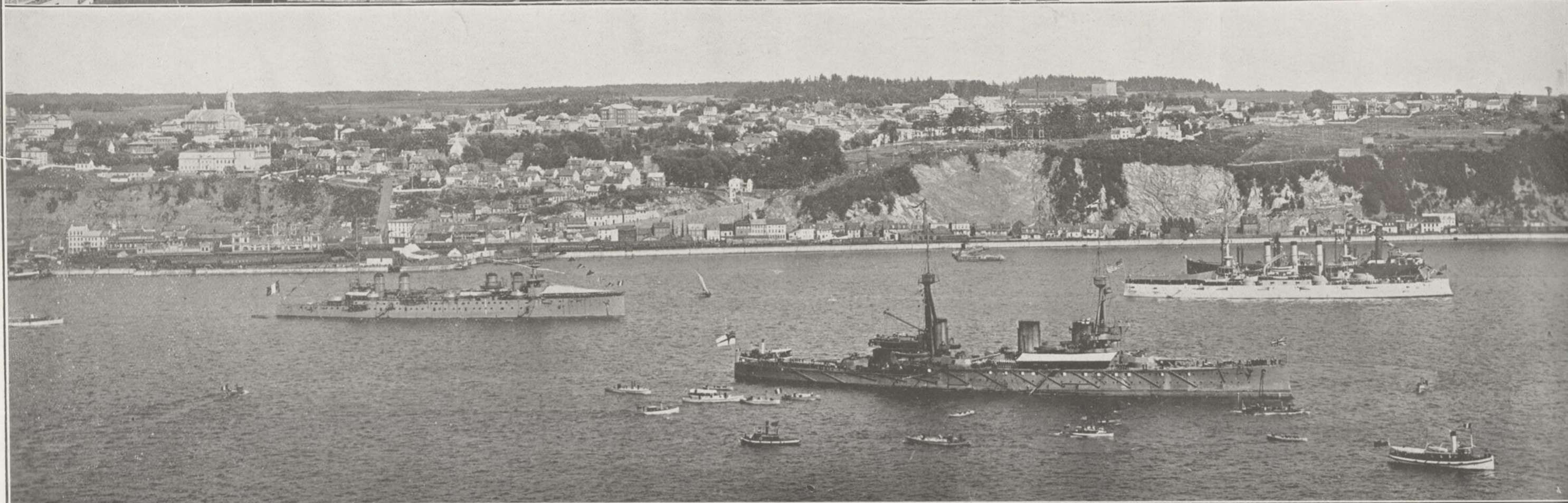
MONTREAL'S CIVIC RECEPTION TO "BOBS"—On Thursday of last week General Lord Roberts reached the city from Quebec. Soon after his arrival he was tendered a reception at the City Hall, when he was presented with an address by Acting-Mayor Lapointe. The above illustration shows the "Hero of Kandahar" entering his automobile at the City Hall at the conclusion of the reception ceremonies. "Bobs" received an enthusiastic reception in Montreal. (Photo by A. I. Rice, St. Catherine st. West.)

Champlain Day at Quebec: Crowd on Terrace Watching for Arrival of Good Ship Don de Dieu

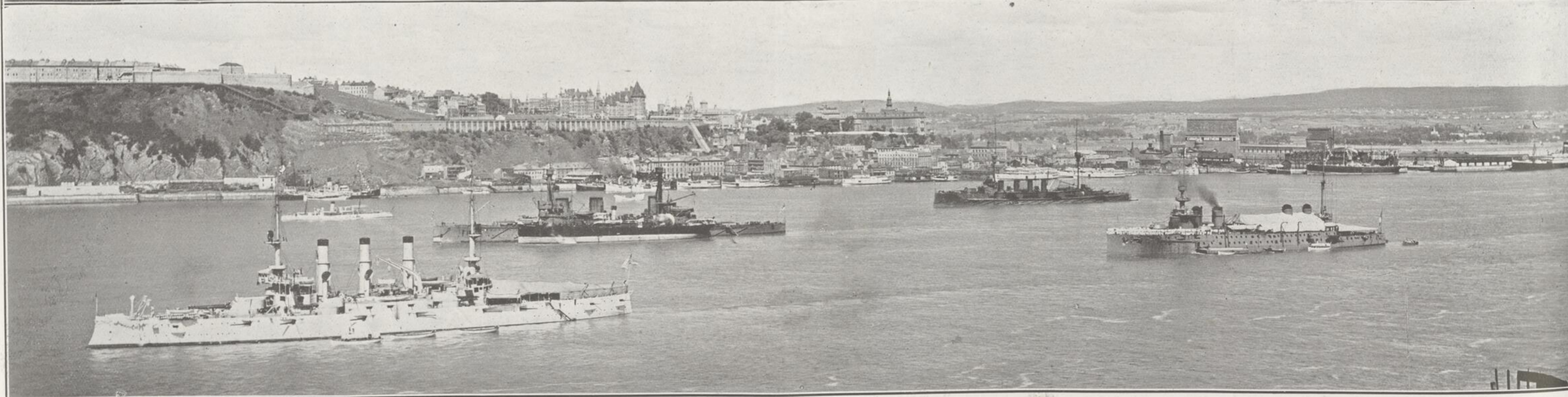


WATCHING THE ARRIVAL OF CHAMPLAIN AT QUEBEC—This illustration shows the crowd that lined the Dufferin Terrace and its precincts on the day on which the Don de Dieu brought Samuel de Champlain and his crew to Quebec. Thousands, it will be noticed, have taken positions near the railing overlooking the river, while hundreds are seated on Citadel Hill. Thousands also are promenading the Terrace. During the Tercentenary celebration the Terrace was frequently packed with a dense mass of humanity. (Photo by Notman & Son, Montreal.)

How Britain's Mighty Warships Looked When Anchored Nearly a Thousand Miles from the Sea



THE UNIQUE NAVAL DISPLAY AT THE TRICENTENARY CELEBRATION—The first of the above illustrations is deeply interesting from the fact that it pictures a powerful naval squadron of 11 gigantic men-o'-war riding at anchor 800 miles inland from the open sea. Among the warships is the most powerful cruiser in the world—H.M.S. Indomitable, which conveyed the Prince of Wales to and from Canada—and several of the leading battleships of Great Britain, France and the United States. The St. Lawrence is possibly the only river in the world that is deep and full enough to allow such an imposing squadron of mighty battleships to proceed so far inland from the sea. The second illustration portrays the scene that immediately followed the arrival of the Prince of Wales at Quebec. The formidable cruiser in the foreground is the Indomitable, and the small boats that are approaching her are carrying naval and state officials to pay their respects to His Royal Highness. In rear of the Indomitable (reading from left to right) are the French man-o'-war the Leon Gambetta, and the United States battleship the New Hampshire. Beyond are the heights and town of Levis. (Photo by Notman & Son, Montreal.)



PICTURESQUE INCIDENTS CONNECTED WITH THE NAVAL DISPLAY AT THE TRICENTENARY—The first of the above illustrations shows the Prince of Wales returning the official calls of the Admirals of the British, French and United States Fleets at Quebec. The second shows (from left to right) C.G.C. Canada, H.M.S. Indomitable, H.M.S. Minotaur (in rear), and the United States battleship New Hampshire and the French battleship Leon Gambetta (in the foreground). Riding at anchor in the river in rear of the funnels of the Indomitable may be seen the Don de Dieu, Champlain's ship. Quebec forms the background of the entire picture. An interesting feature of this illustration is the presence of a collier transshipping its cargo of coal to the big battleship. The size of the Indomitable can be adequately judged by comparing its length with that of the collier. A like comparison between the funnels of the two vessels will give readers of The Standard an idea of the size of the warship's funnels. (Photo by Notman & Son, Montreal.)

Champlain's Little Ship the Don de Dieu and Many Hardy Mariners Arrive Once More in Quebec



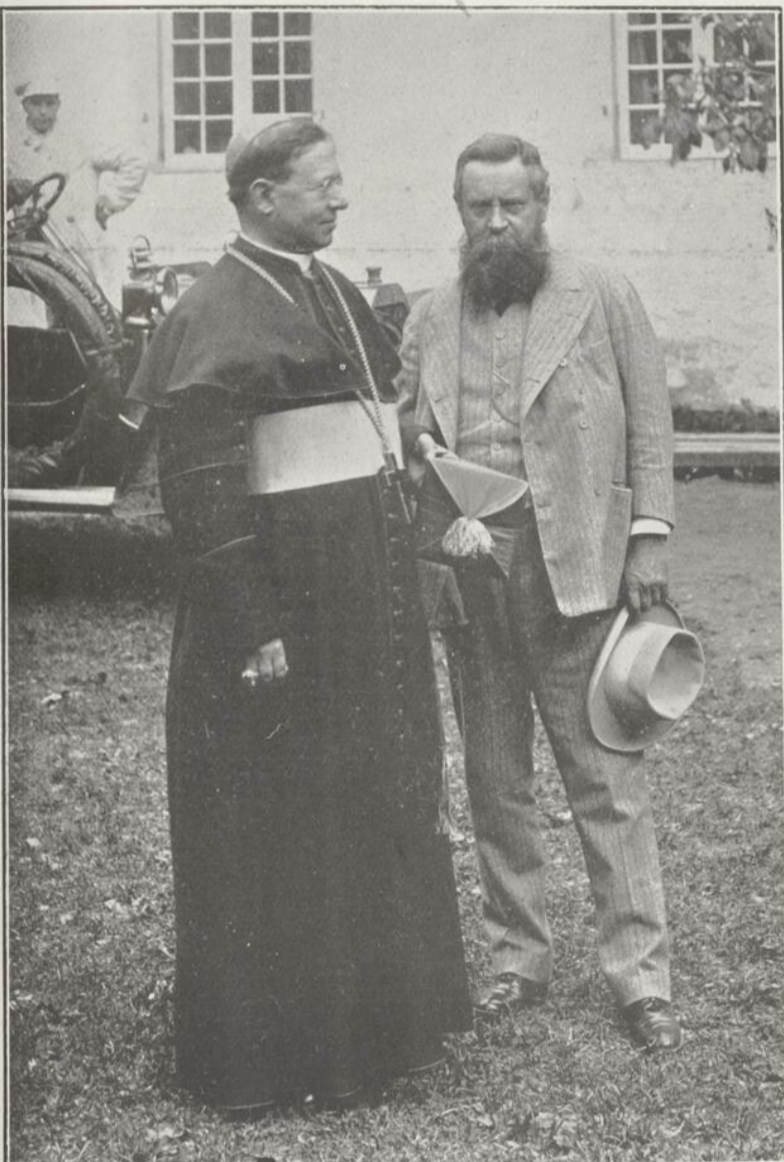
THE ARRIVAL OF SAMUEL DE CHAMPLAIN ON BOARD THE "DON DE DIEU"—This incident in the recent Tercentenary festivities was, perhaps, the most picturesque of all that occurred during the celebration. From a point around the bend in the river near the Isle of Orleans, the little craft, with sails filled with air, gently glided over the water until it reached the spot at which the real Champlain landed three centuries ago. There it dropped anchor. A moment later it was surrounded by a number of canoes filled with Indians stripped to the waist. A pow-wow followed, at the conclusion of which Champlain boarded one of the canoes and was conveyed to the King's Wharf. From the wharf he proceeded to L'Habitacion. (Photo by Notman & Son, Montreal.)

CANADA'S COMMANDING POSITION

European students of forestry, who have been forced by the condition of affairs on that continent to carefully study the question of wood supplies, have sounded a note of alarm as to the

should supply the importations of all the countries requiring manufacturing wood, their normal production would not suffice, and their forest capital would soon be dissipated." Dr. Schlich, a leading English authority, says:—

Sir Dietrich Brandis, the father of the present system of forestry in British India, says:— "I cannot sufficiently urge upon you Canadians the necessity of concentrating all your energies upon one point, and that is the constitution of as large



THE POPE'S REPRESENTATIVE IN CANADA, AND BRITAIN'S PREMIER PEER—His Excellency Mgr. Sbaretti, Papal Delegate to Canada, and His Grace the 15th Duke of Norfolk, first peer of the British realm and Hereditary Marshal and Chief Butler of England. His Grace was the official representative of the Roman Catholic Church in England at the Tercentenary celebration. He was very popular among all classes while in Quebec, especially with the children. (Photo by Livernois, Quebec.)

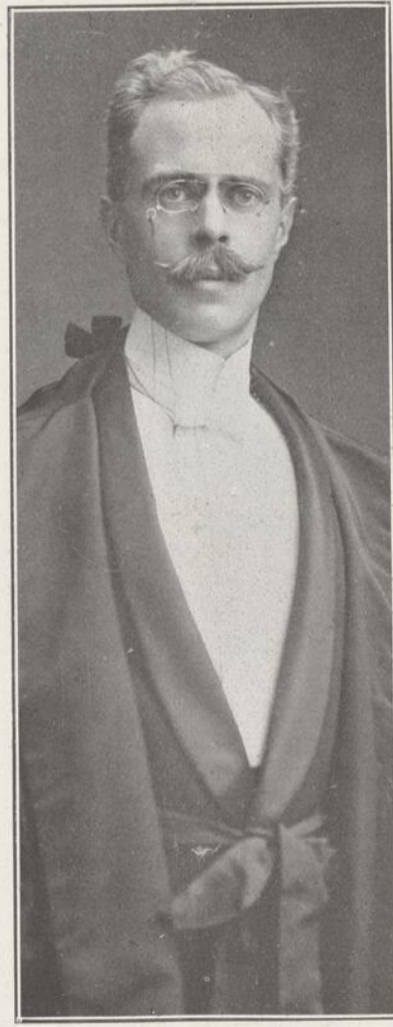


A PICTURESQUE REMINDER OF THE FOUNDING OF QUEBEC—Samuel de Champlain and the crew of the Don de Dieu, including Mr. Frank Lascelles, Master of the Pageant, who will be noticed standing in front of the mainmast on the right of the picture. Champlain is the figure in black in the middle of the illustration. (Photo by Livernois, Quebec.)

future. M. Melard, one of the leading foresters in France, says:— "At the present moment the forestry situation in the civilized world can be summed up in these words: The consumption of wood is greater than the normal production of the accessible forests. There is in this production a deficit which is for the moment supplied by the destruction of the forests." "If Sweden, Finland, and Canada

"The standby for coniferous timber will be Canada, provided her Government does not lose time in introducing a rational management of her forests."

an area of State Forests as possible, to enable Canada to supply permanently the greater portion of the coniferous timber now imported into Great Britain."



SIR GEORGE GARNEAU, Mayor of Quebec, to whom much of the success of the Tercentenary celebration was due. While in Quebec, H.R.H. the Prince of Wales conferred the honor of Knighthood on Sir George.



CHARACTERS IN THE TERCENTENARY PAGEANTS—Mr. Moise Raymond as Jacques Cartier, the discoverer of Canada, of Quebec, and of Montreal. (Photo by Livernois, Quebec.)



CHARACTERS IN THE TERCENTENARY PAGEANTS—Mr. J. E. Samson as Admiral Philippe de Chabot, and Mr. Thomas P. Ross as a color-bearer of the 78th Highlanders. (Photos by Livernois, Quebec.)

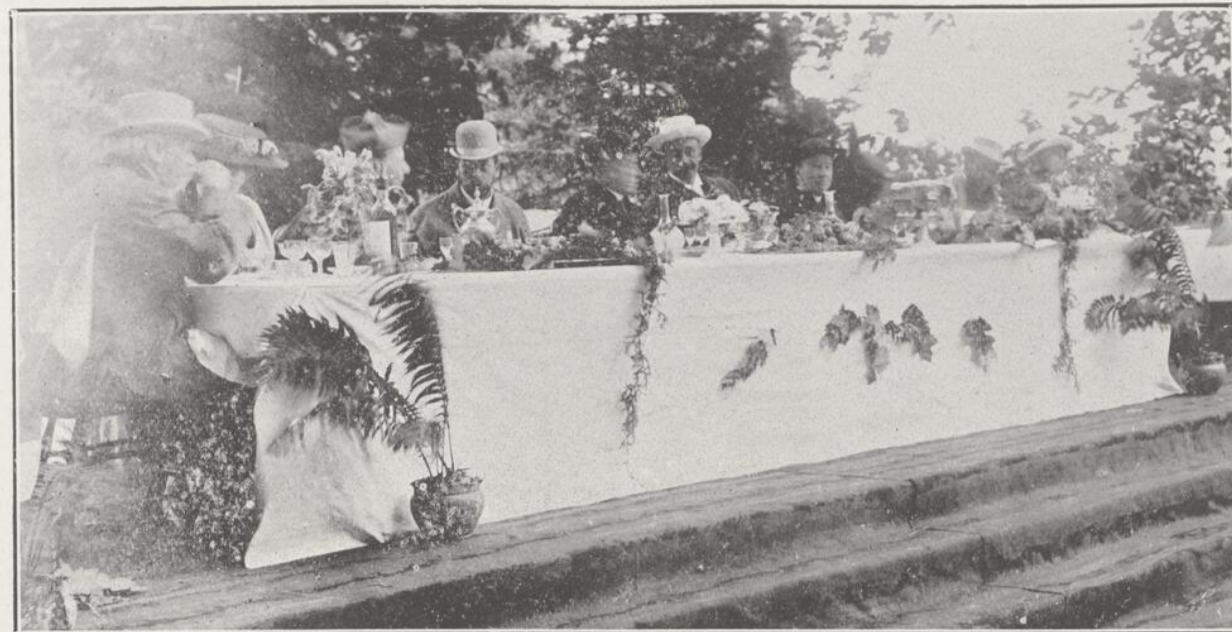


FEEDING THE CREW OF A NAVAL SQUADRON—During the recent Tercentenary celebration at Quebec, large quantities of provisions were taken on board the various battleships and cruisers at Quebec. The above illustration shows a pinnace belonging to a man-o'-war being loaded with supplies. (Photo by Notman & Son, Montreal.)

H.R.H. The Prince of Wales Enjoying An Out-of-door Cup of Tea



HEAD OF THE FRASER CLAN IN MONTREAL—The St. Andrew's Home, Aqueduct Street, Montreal, where Lord Lovat, Chief of the famous Fraser Clan, and 16th Baron Lovat, was entertained on Monday last by the Scotch societies of the Canadian metropolis. Lord Lovat was one of the distinguished visitors to the recent Tercentenary celebration at Quebec. (Photo by Rice, St. Catherine Street West.)



INTERESTING BANQUET GROUP AT ST. JOACHIM, QUE.—The above picture was taken during the informal visit of His Royal Highness the Prince of Wales to the summer retreat of the Quebec Seminary at St. Joachim, a 17th century village below Ste. Anne de Beaupre. The house occupied by the reverend fathers at this place is over 200 years old, and the adjoining farm is famous as having at one time belonged to Champlain. During the visit of His Royal Highness to this extremely interesting spot, he, along with others, were entertained at luncheon by the reverend officials of the Seminary. The illustration shows the table of honor, at which were seated (reading from left to right): Sir Wilfrid Laurier, Prime Minister of Canada; the Countess Grey; Mgr. Sbarretti, Papal Delegate to Canada; H.R.H. the Prince of Wales; Mgr. Laflamme; His Excellency Earl Grey, Governor-General of Canada; Mgr. Mathieu; His Grace the Duke of Norfolk. (Photo by L'ivernois, Quebec.)

A TRIBUTE TO EARL GREY BY W. T. STEAD.

Earl Grey, the Nestor of Whig statesmen, had long retired from public life before his death summoned Albert Grey to the House of Lords. As a peer he was as democratic as ever, but Home Rule severed him for a time from the party to which Grey hereditarily belongs. His imagination was stimulated, his conscience was roused by the great revival of patriotism which took its rise in the early eighties. The British people, who, as Seely said, had founded their Empire in absence of mind, discovered from reading his book on the expansion of England how vast

was the orb of their Imperial destiny. On some, alas it may be the majority, this discovery was as the drinking of heady wine. Forgetting the responsibilities and realizing only the splendours of Empire, they degenerated into Jingoism, and made Imperialism for a time almost synonymous with crime. Lord Grey was an Imperialist of a saner sort. He realized the responsibilities and shouldered the duties of Empire. But even he lost his balance for a time under the glamour of Rhodes, whose whole-hearted faith in England and love of his country made Lord Grey an enthusiastic disciple. From 1896 to 1906 the sun of Britain suffered a blood-red eclipse, during which Lord Grey in Rhodesia manfully did his best. When the South African War was over, Lord Grey was appointed Governor-General of Canada in succession to

Schlitz Double Value

Schlitz beer costs twice as much as common beer to brew. The materials are the most expensive. We spend fortunes on cleanliness. Even the air that cools the beer is filtered, so no germs can get to it. We age the beer for months so that it cannot cause biliousness. And every bottle is sterilized after it is sealed. Yet Schlitz beer and common beer cost you alike. Which will you ask for?

Call for the Brewery Bottling. To be had at all first-class Grocers and Hotels, and at ST. CHARLES' GROCERY, 395 St. Lawrence Street, Montreal. Tel. Bell East 3381. Merch. 83. F. X. St. Charles & Co., Agents, Montreal.

The Beer That Made Milwaukee Famous

Central Business College
TORONTO
Trains young men and women for good salaried positions. Fine catalogue free. Write for it.
W. H. SHAW, President.

The Mattress That's Always Ventilated.



The Marshall Sanitary is the only mattress made that has complete interior ventilation. The construction is such that the slightest move of the occupant forces a current of air through the mattress.

No matter what position you assume, the Marshall Mattress yields luxuriously to every line and curve of the body.

Test the merits of the Marshall Sanitary Mattress yourself for a month, and, if it's not the most comfortable mattress you've ever slept on, we'll refund your money and take the mattress back.—Price \$25.

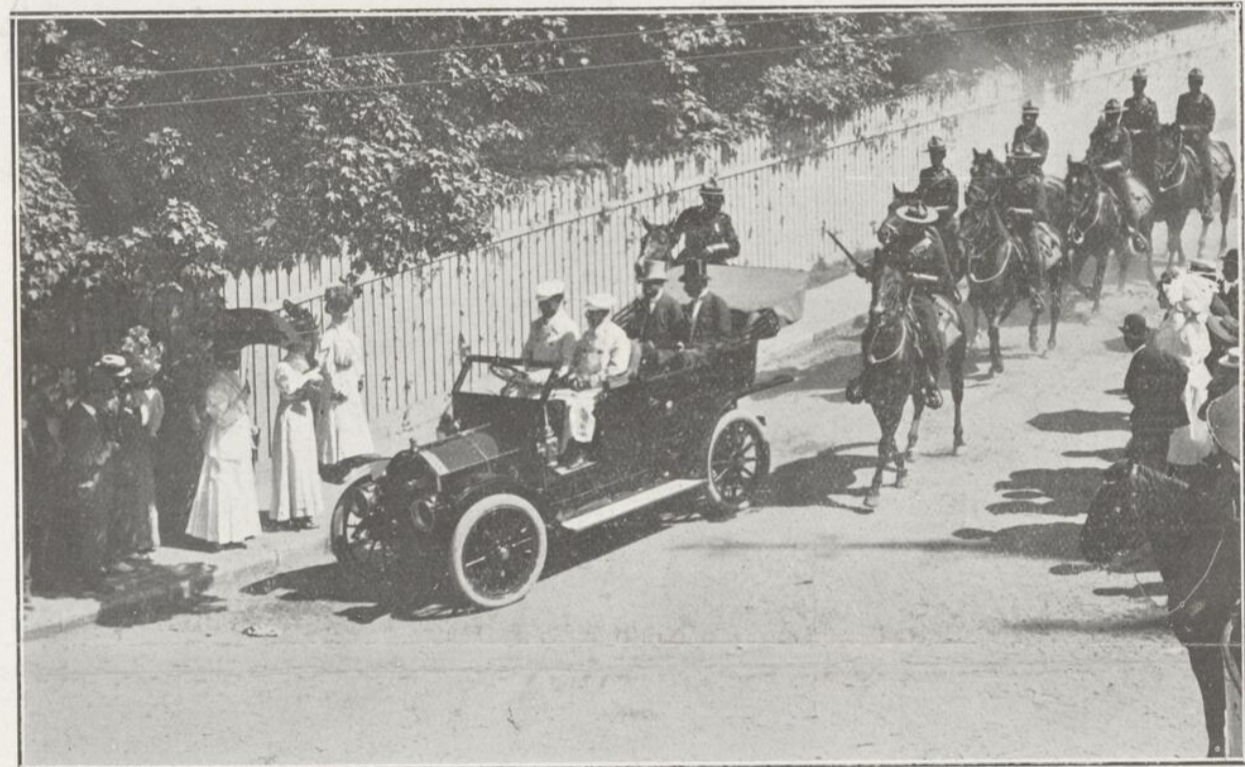
The Marshall Sanitary Mattress Co., Ltd., Manufacturers, Factories in Toronto, Chicago, and London, Eng.

Renaud, King & Patterson, Limited,

Exclusive Agents for Montreal, Cor. St. Catherine & Guy Sts.

Just a choice Old Port combined with some of Nature's best recuperative tonics.
Byrrh Wine Tonic
Benefits old and young. On sale everywhere.

Fine feathers make fine birds; but they don't make them taste any better.



THE PRINCE OF WALES IN AN AUTOMOBILE—During his sojourn in Quebec, His Royal Highness frequently made use of an automobile for getting about the city. The illustration shows him, in company with Earl Grey, emerging from the Citadel driveway preparatory to passing down St. Louis street. A troop of Royal Canadian Dragoons follows the carriage. (Photo by Notman & Son, Montreal.)

ST. JOHN'S
91 ONTARIO STREET WEST, MONTREAL. Tel. East 146.
For Boarders and Day Scholars. Headmaster: C. S. Fosbery, M.A. Preparation for Universities, R.M.C., Kingston, and for Business. Amongst his pupils' successes:—Advanced Exhibition \$150. McGill Matric. 3rd Place McGill Matric. Science. Term commences WEDNESDAY, SEPT. 16, at 9 a.m.

The Radnor Water Co.
Announces that it has been Appointed Purveyor of MINERAL WATER to
HIS MAJESTY KING EDWARD VII.
AND
His Royal Highness The Prince of Wales.

Bishop's College School,
LENOXVILLE, P.Q.
Headmaster: REV. E. J. BIDWELL, M.A. (Oxon.), D.C.L.
Well known Boarding School for Boys. Preparation for Universities; R.M.C., Kingston; or business life. Fine buildings, beautiful situation. Separate Preparatory School. Next term begins Sept. 12th. For Illustrated Calendar and information apply to F. W. FRITH, M.A., Secretary.

CAUSES you to use all your lungs all the time. Compels deep breathing and straightens round shoulders instantly. **Nulife** expands the chest from two to six inches. **Nulife** gives man a commanding appearance, woman a beautiful figure with or without corsets, and makes children sit, stand, and grow erect and be healthy. Over five million are now being worn, giving utmost satisfaction. Send your height, weight and chest measure (not bust measure) and state whether male or female, with \$3.00, and **Nulife** will be sent you prepaid. Fully guaranteed. Write for beautiful free illustrated booklet on **Nulife**.
The Draper Company
22 King St., - Aylmer, Ont.

A Veritable Gem of Canadian Production.

This magnificent Gold Casket was presented to H.R.H. the Prince of Wales by the citizens of Quebec.

Probably one of the finest examples of the goldsmith's art ever turned out from the Dominion of Canada is the casket that the citizens of the city of Quebec presented to His Royal Highness the Prince of Wales upon the occasion of his visit to the tercentenary celebration.

The casket, which is the work of the Hemley establishment of Montreal, is of the finest frosted gold, and is designed in the form of a cigar case, so that His Royal Highness may, if he chooses, use the casket in that capacity.

Standing seven inches high, and being eleven inches in length, and seven and a half inches in width, the casket has a total weight of 150 ounces. Within the gold case there is an inner casket made of genuine Canadian cedar, and within this was placed the illuminated address of the citizens to the Prince.

On the front of the casket are the arms of Quebec, in a medallion, in colored enamels, the cliffs, fort and ship in the background. In the central foreground of the medallion is an allegorical female figure, seated at whose feet is a Canadian beaver. In her right arm is supported a cornucopia, white beneath this is a beehive, and at the figure's side there rests a shield, with the old Quebec arms upon it, namely, a lion holding a key, signifying the holding of the key to the continent by the city of Quebec. The medallion is framed with a wreath of laurel.

around which is entwined a ribbon, with the motto in blue enamel: "Natura fortis industria crescit" (by nature strong, increasing by industry). The whole medallion is surmounted with a mural crown. Beneath the frame is a ribbon in blue, bearing the words: "Troiseme centenaire de Quebec," in gold letters.

To the left of this are the "Ich Dien," and grey ostrich feathers of the Prince of Wales in enamel, and to the right the royal coat of arms with two additional signs imposed upon them in extra relief—the peculiar bar indicative of the eldest son across the chief, and the arms of the House of Hanover in the centre of the shield. The crown above is the same as the King's except for the absence of the gold side.

On the right-hand side of the casket is an enamel of Champlain's well-known drawing of his first "habitation" at Quebec, within a frame of muskshells in gold, with gold laurel leaves and ribbon.

On the left is a similar enamel of the Don de Dieu, Champlain's ship.

The back bears the presentation inscription in gold lettering in blue enamel—a very fine piece of work, in an ornate frame of pierced old scroll work, with maple leaves in the corner.

The dedication reads: "Adresse des citoyens de Quebec a

MINARD'S LINIMENT
THE ORIGINAL AND ONLY GENUINE
BEWARE OF IMITATIONS SOLD ON THE MERITS OF MINARD'S LINIMENT

UPPER CANADA COLLEGE
TORONTO THE ETON OF CANADA
FOUNDED 1829
The thorough training in school and residence—the healthful manly sports—and the College History with its inspiring traditions of 75 years—combine to inculcate high ideals and broad views in the minds of the boys.
Courses qualify for University, Royal Military College and Business. Fifty acres of ground with extensive playing fields in healthiest district. Senior and Preparatory Schools in separate buildings. Every modern equipment.
Autumn Term Begins Thursday, September 10th.
ENTRANCE SCHOLARSHIPS for resident and day pupils. Special scholarships for sons of "old boys."
EXAMINATIONS for entrance scholarships, Saturday, September 12th.
HENRY W. AUDEN, M.A., (Cambridge), Principal

his brother-in-law, Lord Minto. The post was congenial. In the keen and bracing Canadian atmosphere the Liberal instincts and youthful fervour of the Greys of Northumberland revived. He has thrown himself heartily into the encouragement of all that is highest and best in Canadian life.

The Prince of Wales' Automobile Tires.

EARL GREY.
H. R. H. THE PRINCE OF WALES.
SIR GEORGE GARNEAU, MAYOR.
This photograph of the Prince of Wales, taken in front of the Garrison Club, Quebec, shows the Royal Car used during the Tercentenary. This car was equipped with the well-known
"Canadian" Glincher Tire
manufactured by the Canadian Rubber Co. of Montreal Limited. These tires were selected, after a great deal of consideration and investigation, on account of their well-known reliable qualities.
The Canadian Rubber Company of Montreal
LIMITED
HEAD OFFICE: MONTREAL, CANADA.
BRANCHES: HALIFAX WINNIPEG, ST. JOHN REGINA, MONTREAL CALGARY, MONTREAL VANCOUVER, TORONTO VICTORIA.