

THE SHERBROOKE  
RECORD



Friday, January 16, 1976



*Ski and Snowmobile Supplement*

# Mont Elan draws skiers to East Angus



**WEEKEND SKIERS** — The line up for the lift starts early Saturday morning and skiers, all sizes, shapes and ages patiently await their turn at the slopes. Shown here is Mont Elan in East Angus which features a 1,050 foot pomalift and a 1,070 foot T-Bar

lift. Mont Elan is open for daytime skiing on Saturday and Sunday between 9:30 a.m. to 4 p.m. and has night skiing Tuesday, Wednesday and Thursday from 7 until 10 p.m.

(Record photo by Gordon Alexander)



**TIRED SKIER** — A warm and welcome sight at the end of a hard day's skiing is the Mont Elan snack bar chalet where a hot

cup of coffee and a hot meal await.

(Record photo by Gordon Alexander)

## Function key word in equipment

Function is the key word this season as designers bite their nails, manufacturers consult their astrologers and retailers shuffle their display racks. Every conceivable yet functional bit of innovation designed to make life easier on the slopes can be found in this year's blazing panorama of ski wear. Consider: downfill collars for comfort and warmth, zipper handles on the inside bottom of the jacket for lift ticket purposes, kidney warmers, cuff closures, stretch inserts, underarm breathing holes, snap-off leather epaulettes, ad infinitus.

But don't ignore our passing reference to blazing panorama. It's all here if

somewhat toned down with solids since last year. Enter the military. Enter black. Enter novelty designs. Enter s-t-r-e-t-c-h. Stretch is functional: it allows you to move out freely and comfortably. It also allows you to speak that subtle form of communication called body language. Nostalgic design, reminiscent of the 20s era puts the art nouveau look on some of the most modern fabrics known to man.

Speaking of fabrics, we are living in the year 2001 with inner and outer garments stretching, hugging and protecting us from inclement elements. Blazing, reminiscent, futuristic, flattering, bizarre, and

beautiful, it's all functional and it's all for you.



**SKI SHOPPERS** — The bulk of the ski equipment shopping is done during the early part of the season and tapers off by mid-February, according to the proprietors of the Ski Shop at Mont Elan in East Angus. In the photo novice and experienced skiers alike browse through the latest styles of equipment and clothing.

(Record photo by Gordon Alexander)



The ideal ski centre for the whole family!

FREE access to Cross Country Trails

### DOWNHILL SKIING

#### FAMILY TICKETS

The whole family: from \$100 to \$175

#### ONE DAY TICKETS

Adults: \$3.75 [1/2 day: \$3.00]

Students: \$2.75

Children under 9 years old: \$2.00

To all skiers, we wish you a good skiing season

## MONT ELAN SKI SHOP

For good service and incomparable prices.



SPECIALS all season long in well known trade names, such as

**DYNASTAR SKI  
DOLOMITE BOOTS  
TOPHER & WHITE  
STAG CLOTHING**

**SPECIALS ON  
CROSS COUNTRY SKIS**

Complete line of equipment.

Fiberglass skis

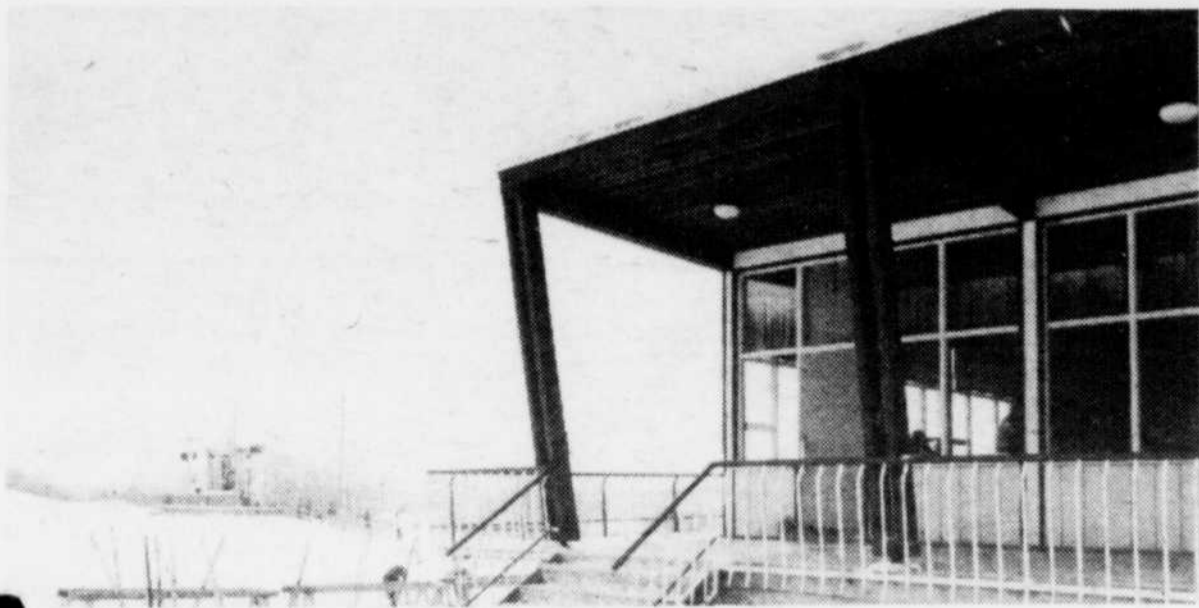
On these specials, installation is FREE



**Congratulations to our local  
Ski Club directors  
East Angus Brick  
& Tile Inc.**

EAST ANGUS — Tel. 832-2414

# Mont Bellevue offers skiing near city centre



SKI CHALET at Mont Bellevue, Sherbrooke offers warmth and food for skiers at the popular ski centre where downhill,

night and cross country skiing are featured.

(Record photo by Steve Bell)

SHERBROOKE (SB) — The Mont Bellevue Ski Centre has for the past 11 years offered Sherbrooke residents the opportunity to enjoy an afternoon or evening of skiing without having to travel great

distances. Situated just off Galt St. on Jogues St. the centre's seven trails fan out beneath the illuminated cross which stands atop Mont Bellevue and then rejoin at either of the centre's two lifts. These

lifts are poma-lifts, very easy to use as long as skiers remember not to sit down while using one.

A ski shop as well as a canteen and a warm place to change boots can be found in the large chalet at the base of the mountain. It is from here that many Sherbrooke youngsters start their weekly ski lessons under the watchful eye of one of the centre's many capable skiing instructors. Private and group lessons are available at the center, week-ends and some evenings for anyone wishing to take advantage of the slopes' proximity to practice their techniques after work or school.

Like all other ski slopes Mont Bellevue has a ski patrol in case of an injury on the slopes. The centre's patrolers are members of the Saint John Ambulance and are on the slopes at all times to aid skiers should the need arise.

Night skiing is possible every night except Sunday with all trails brightly lit from 7 p.m. to 10 p.m.

And for those wishing to join the great cross country skiing boom, the ski centre has a cross country trail and is in the process of preparing others for the public's enjoyment.

Season tickets for married couples are \$125. for adults, \$75. for a family with three children, \$175. each additional child, \$12. for students 16 and up; season tickets are \$50. and for those under 16, \$35.

Weekday rates are: 10 a.m. to 4:30 p.m.; adults, \$2.50; children, \$1.25; 10 a.m. to 1:00 p.m.; adults \$1.50; children, \$1.00; 1 p.m. to 4:30 p.m.; adults, \$1.75, children, \$1.00; 7 p.m. to 10 p.m.; adults, \$2.00, children, \$1.00; Booklets are available: adults, \$3.00; children, \$1.00.

The Mont Bellevue Ski Centre is a municipal project, owned and operated by the City of Sherbrooke. Anyone wishing more information concerning tickets or skiing lessons should call the ski shop at 565-8626 or 569-7476.



ON THE WAY UP — A few of the many Sherbrooke residents who take advantage of the closeness of Mont Bellevue are seen as they ride one of the two poma-lifts to the mountain top.

(Record photo by Steve Bell)



**WAREHOUSE**

**SALE**

**NOW**

**IN**

**PROGRESS**



**Luggi Leitner**  
Olympic Gold Medal Winner



**Leitner**  
Leitner Ski Boutique  
51 King St. E.  
Sherbrooke, Que.



FOR APRES-SKI  
WEAR IT'S

**THE Shetland Shop**

Tel: 838-4714

Route 5  
MASSAWIPPI, Que.

WINTER COATS (CAMEL HAIR — TWEED & MOHAIR) — TWEED COATS — SUITS — DRESSES — CAPES — CAR COATS FROM SCOTLAND — BLANKETS — CHILDREN'S WEAR — SWEATERS — TWEEDS BY THE YARD

OPEN DAILY



**EVER TRY SKIING!**  
**WITHOUT BENDING YOUR KNEES?**  
Same results as driving without proper springs under your car?  
For better motoring and a safer vehicle, stop at

**Deziel Auto Spring Inc.**

1100 Deschailons, Sherbrooke  
EXPERT SPRING REPAIRS, ADJUSTMENTS,  
INSTALLATIONS, SNOWMOBILE TRAILER HITCHES  
CALL IN FOR ESTIMATES!

**BROKEN WINDSHIELD?**

on your  
**SNOWMOBILE**

Don't snowmobile this winter with a cracked or broken windshield

We can supply CLEAR — YELLOW — BLUE  
of top quality BUTYRATE

Snow time is fun time

Open Mon. - Fri.

**CANADIAN PITTSBURGH INDUSTRIES**

1581 Denault St. — Sherbrooke — 567-4836

**SNOWMOBILING or SKIING**

wear with pride clothes expertly cleaned by our specialists



**BUANDERIE SHERBROOKE LAUNDRY**

353 Frontenac St. — Sherbrooke — Tel. 562-2633

# Mont Orford a member of Ski East

No matter how you figure it, numbers win the argument. Each year in Quebec a half-million alpine skiers and half that many cross-country cousins take to the slopes and hills. That should settle any dispute of where the great skiing is. After all, 750,000 people can't be wrong. Right?

For most Quebecers and visitors alike in eastern Canada, the ski week or weekend begins in Montreal or Quebec City, the two main hubs of travel. Both cities are well serviced by air, bus or train and once there skiers can travel to the hills by bus or car.

East of Montreal and linked to it by a two-lane super highway is the Ski East region, consisting of six mountains with an average vertical of 1500 feet. Bromont, Mont-Orford, Owl's Head, Mont-Echo, Mont-Sutton and Jay Peak in northern Vermont have been operating in association for 13 years and the advantages of co-operation are best demonstrated by Ski Ventures 76, a package deal that includes:

— six nights hotel-motel accommodation with complete bathroom facilities, starting with dinner on arrival Sunday;

— six skier breakfasts and six dinners during your stay;

— five days skiing with access to all ski lifts at all six Ski East mountains. (Recommended for those who enjoy travelling between hills as well as down them);

— full use of a compact completely skier-sized Avis rental car for one week with 1,000 free miles (gas and insurance extra) available upon arrival at Montreal International Airport.

The cost is just over \$200 per person. Options available at additional cost include VIP accommodation with deluxe rooms, some with log-burning fireplaces, and a Saturday-Sunday "ski-over."

The height of luxury for most skiers would be to step into your bindings just outside the chalet door and swing down a gentle warm-up slope to the lift terminal. Several hotels in the Ski East region provide on-site accommodation.

La Pampolaise Lodge is located right on the hill at Mont-Sutton. Owl's Head Lodge features tiered rooms which enable the children to bunk in a loft with their own view of the mountain. Hotel Jay is so close to the mountain that you can leap over your private balcony and be on your way. Stairs are provided, of course, for those who don't mind wasting time.

Not every hotel is so convenient to the slopes, but

most are only minutes away. Horizon Hotel, within walking distance of Mont-Sutton, has an indoor pool perfect for soothing aching muscles and its lounge (famous or infamous, depending upon which side of the noise you're on) is ideal

for slaking that apres-ski thirst.

Then there are accommodations several miles from the hill which have special qualities. After all, a ski vacation is much more than simply going up and down a hill.



CHAIRLIFT AT ORFORD carries skiers to the mountaintop quickly and safely.

(Record photo by Gordon Alexander)



**STOP**

**RELAX**

**BROWSE**


- Fountain Service
- Tobacco Shop

**GORDON'S NEWSTAND**

Tel. 843-9047

423 Main St. West — MAGOG

## ORFORD COUNTY



is steadily gaining popularity as year-round holiday and recreation area—

As the Quebec Member of Parliament for this scenic region, I am proud of the tremendous gains being made in our tourist trade ... we are proving that we've got what holidayers want, and at the pace we are going, we'll give them far more. Orford County is without question a lovely region, a district with unlimited scope. As your member of parliament, I hope to guide you in reaching our full potential in the tourist industry.

Be certain, I shall do my utmost to serve you well!



GEORGES VAILLANCOURT

M.N.A. for Orford County

## SHADY CREST HOTEL-MOTEL

### AYER'S CLIFF

ENJOY A CASUAL AND COZY WEEK-END WITH US

MOTEL — w/Kitchenette—Showers  
Wedding Receptions — Banquets

ORCHESTRA  
Fri.-Sat.-Sun. — from 3 p.m. til closing

For Reservations  
Dial

## 838-9916

**Make that sport drink**

## MILK—

— and when you make it MILK, make sure it's the BEST. drink dairy products from




**650 Georges St.**  
**MAGOG**  
**843-5727**

— BRANCHES —

LENNOXVILLE  
**562-7266**

STANSTEAD  
**876-2114**

## MOTEL FLEURS DE LYS



Comfort-right heated units, fireplace, with or without kitchenettes. Ideal for Families or Groups.

FOLLOW THE AUTO-ROUTE 'TILL EXIT 67 OR TAKE ROUTE 1

60 MINUTES FROM MONTREAL  
Along Quebec's Scenic Autoroute  
60 Seconds from Exit 67

SKI ORFORD STAY AT

## MOTEL FLEURS DE LYS

For Reservation Call 843-5508 — Your Hosts: Mr. & Mrs. Alphonse Lavoie

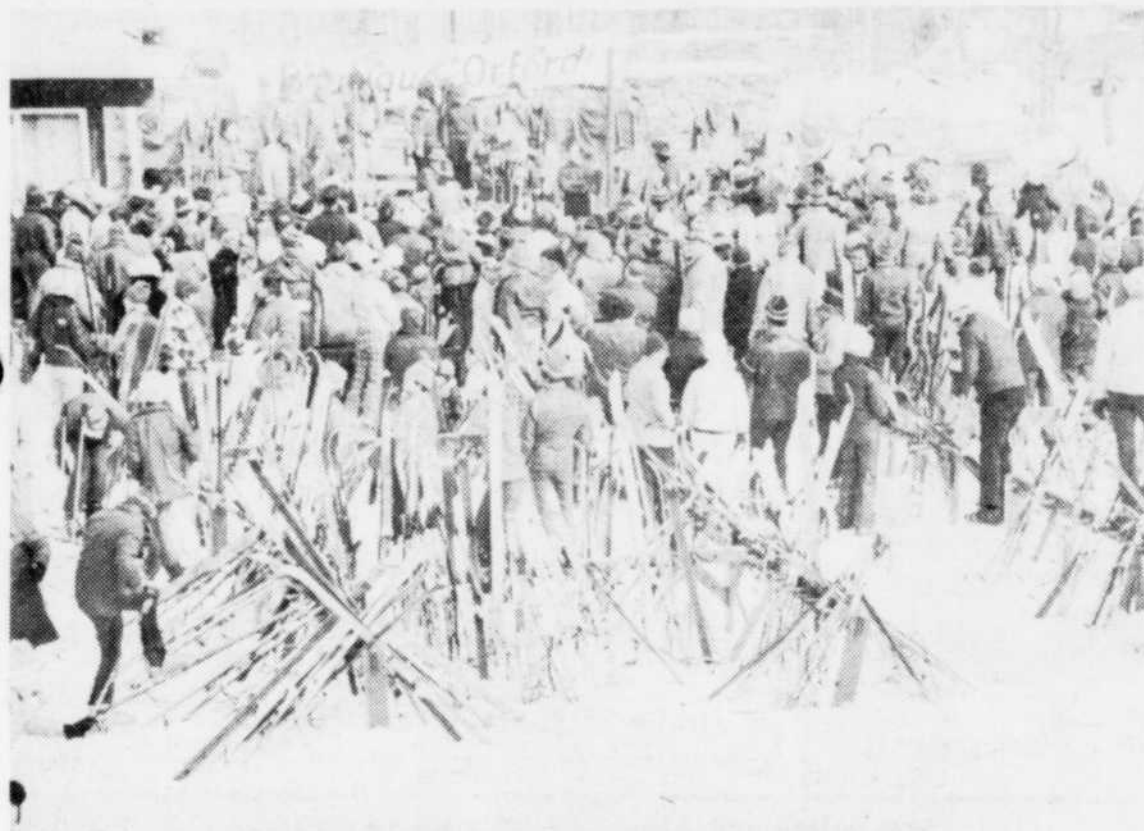
# Well groomed trails characterize Ski East

Getting the snow is only half the battle for a ski area. It's what the mountain manager does with the white stuff AFTER it has fallen that can spell the difference between "Fair", "Good" and "Excellent" skiing.

When hardpack rears its ugly head, men and machines go to work with powdermakers, crushing and churning it to a skiable consistency. When bumps get too high and tight, out come the mogul-cutters and

Most SKI EAST areas have grooming crews on duty 24 hours a day, seven days a week, ready for any eventuality.

Their vigilance and ability paid off handsomely last season.



A POPULAR CENTRE — Mont Orford situated near the city of Magog in the Eastern Townships draws thousands of

skiers every year and offers a wide range of trails ranging from beginner to expert.

Over the years...through the snowy and not-so-snowy winters...the five resorts that make up the SKI EAST group of Quebec's Eastern Townships and Northern Vermont have perfected the techniques to whip their trails into shape before you can say "Sno-Cat."

Each of the Eastern Five has a hangar full of equipment, and a staff of highly-trained maintenance men that swing into action almost every night of the long SKI EAST season to give the next day's skiers the high standard of conditions they have come to expect.

With each snowfall, the mountain crews take to the trails, packing and rolling the powder to the perfect consistency. Some are always left untouched for the powder hounds though.

down go the humps. But, like their powder-busting brethren, mogul maniacs will always find some hip-wrenching runs to put them through the contortions they love so much.

Late autumn and late spring are also big tests for the mountain groomsmen, for then they have less snow to work with and a little has to go a long way.

But the men of the SKI EAST resorts have always proven more than equal to the task, moving snow out of the woods onto the trails, repairing thin spots on the heavily-worn lift tracks, re-channelling rivulets and performing all the other jobs so vital to maintaining good skiing conditions when the snow is less than plentiful.



Automotive & Marine Repairs  
Tires, Batteries & Accessories  
Shell dealer & General repairs.

## BACHELDER'S GARAGE

Tel.: 843-2241 — Georgeville, Que.

EVERYBODY LIKES TO BE A WINNER...  
Exclusive lines like our unique range of

### LE CREUSET

Cast Iron Fondue Ware will put you ahead of the game in serving on special occasions, such as "apres-ski" parties.



We're always FIRST with quality.

HEATING SUPPLIES, etc.



PLOMBERIE  
PLUMBING

QUINCAILLERIE  
HARDWARE

HUDON & VIGNEUX  
INC.

471 Main St. — MAGOG — Tel: 843-3530

## ski fabulous mt orford c'est le ski!

WELCOME to the pleasures of winter at Mont Orford, one of the major ski resorts of the "SKI EAST" region. At Orford you'll find 20 miles of very well-groomed trails and slopes, offering very good skiing and a challenge to all skiers; beginner, intermediate or expert.

Seven modern lifts take 5,700 skiers, per hour to the top of three mountains, at elevations ranging up to 2,800 feet. GOOD PARKING FACILITIES FOR OVER 1200 CARS.

Altitude 2800'



You'll enjoy all the conveniences offered to you and the rates are so reasonable

Cafeteria and bar  
Ski shop and equipment rental  
Ski school with certified instructors  
Canadian Ski Patrol on duty daily  
Kindergarten  
Chapel (Saturday & Sunday)

Seven Lifts  
Three Mountains  
Less Waiting  
More Skiing

#### SPECIAL — \$7.00

Ladies and Men

Every Tuesday, Wednesday & Thursday you can ski from 11 a.m. to closing. Get one hour lesson & have a light lunch or a cocktail in the bar after skiing - all for \$7.00.



RELAX...  
your printing  
problems are  
in good hands  
with

**IMPRIMERIE  
LOUIS FAUCHER  
PRINTING**

Stationery & Office Supplies.

74 Laurier St. — MAGOG — 843-5991

P.O. Box 248  
MAGOG

# mt orford

Tel: 843-6548

Reserv'n:  
843-4200

# Good wining and dining abounds for apres-skiers

SKI EAST (JM) — Mountains hold snow, snow holds skiers but nowhere do they hang closer to the slopes than 'Mahogany Ridge' once the day is over!

time. Enough to make the average intrepid reporter yearn for the thought of a hot buttered rum, expense account notwithstanding.

Cowansville, with the 'death' of the Maurice looks towards the Yamaska Hotel for shelter and food, not to mention a toddy or two. Nicholle behind the bar in

the grill gets looks of awe from sheer physique as does her night time partner, Liette.

Owner Gene Sirois' daughter, Sylvie, presides at the Sunday 'sick parade' then is replaced by the inimitable B-A Jacques later in the day. Lise Tardif enters the fray on Saturday's to hear weekly confessions from her past regulars.

Up the street a block or two Jacques and Ghislaine

Bernier have just taken over the Munika Brasserie. Bernice, Jocelyne and Jovette serve the sizzling steaks in a very friendly spot. Gerry does a fine job too.

The Motel des Deux Lacs on the Dunham road has its regulars while the Pinnacle Lodge, Selby Lake, caters to snowmobilers. Museum buffs enjoy some of the ambiance at the Old Mill,

(Continued on Page 8)



APRES-SKI life abounds in Ski East areas. Above a group of Montreal area skiers live it up at an Eastern Townships

pub after a full day of skiing. (Record photo by John McCaghey)

Good after ski food, company and a touch of such joys as a 'black russian,' bloody mary, spanish coffee or a mere kiss of the hops' provide solace to the souls of skiers.

Atmosphere and friendliness, the thought of familiar faces clad in the warmth of apres-ski clothing or in a pair of jeans suitably adorned with either patches or embroidery set the scene here in Ski East country. Be it here or elsewhere, Vail, Banff, Aspen, Whistler Mountain, Mount Washington, Jay, the Poconos, Whiteface, Stowe, ambiance is the name of the game.

The day this column was written the temperature hovered at a lovely - 37 celsius in Sherbrooke and the rest of the morning was spent looking over the slopes at Owl's Head which were shimmering at the zero mark Fahrenheit at lunch

Thus ends the trivia! Old friends come and go in life and such is the way with spots that cater to skiers. The Maurice Hotel, long the bastion in Cowansville, closed its doors to the public New Year's Eve. Maurice and his fine staff have catered to the wishes and whims of skiers in this area since the slopes first opened almost 20 years ago.

A Toronto friend commented last year that she and her husband had never had as fine cooking at the Royal York in their home city, then marvelled at the room prices — for their modesty.

"When you are an old and gray schusser", to us a horrid paraphrase, you'll still be able to enjoy the Maurice as it is being converted into a home for the mobile elderly.

'Tis advised not to break a leg or you won't enjoy those fine facilities.

A friendly welcome to all skiers.  
Best wishes for a good Season.

From  
**PHARMACIE HAMEL**  
Main St. — Knowlton, Que.



B. Hamel, L.Ph.

243-5700

THE BAVARIANS have arrived in KNOWLTON

## Sepp's "Biergarten"

Via Eastern Townships AUTOROUTE — Exit 52 (Cowansville Rd.)

Come & enjoy yourself in the genuine Bavarian style...it's really great, captivating fun!



- BUSINESSMEN'S LUNCHEON & DINNER
- ALL KINDS OF RECEPTIONS

- FULLY LICENSED
- OPEN EVERY DAY  
from 11:30 a.m.  
to 2 a.m.

FOR RESERVATIONS DIAL:  
**(514) 243-5710**

## WELCOME SKIERS..

Indeed, you'll find the people of the West Bolton area friendly and hospitable, and they're particularly partial to skiers, as we are quite enthusiastic about this popular cold weather sport that is making our district a noted year-round holiday locality.

**MAKE IT A POINT TO VISIT OUR REGION, AND  
THE EXCELLENT SKI AREAS LOCATED IN OUR DISTRICT**

# CORPORATION of WEST BOLTON

We, the officers and citizens of the Municipality of West Bolton, take this opportunity to extend our best wishes to those responsible for the develop-

ment of Glen Mountain Ski Resort. You have contributed immeasurably to the growth of our

area, and we consider your enterprise to be a great credit to the Eastern Townships Region.

you're "always at home among friends", and you'll not find a more friendly community than right here in the district of WEST BOLTON!

# It's a good year for buying skis

An informed and highly sophisticated consumer market (that's you), combined with the dipi-do dollar that caused the prices of European-made skis to soar in the past couple of years, added to steep inflation, unemployment and the international economy, make this (strangely

enough) a very good year for the buyer of skis.

What it all means is that manufacturers in general have reduced selection or are holding the line, while at the same time, they are concentrating their efforts on superior quality. From a technical point of view, skis today are better than ever.

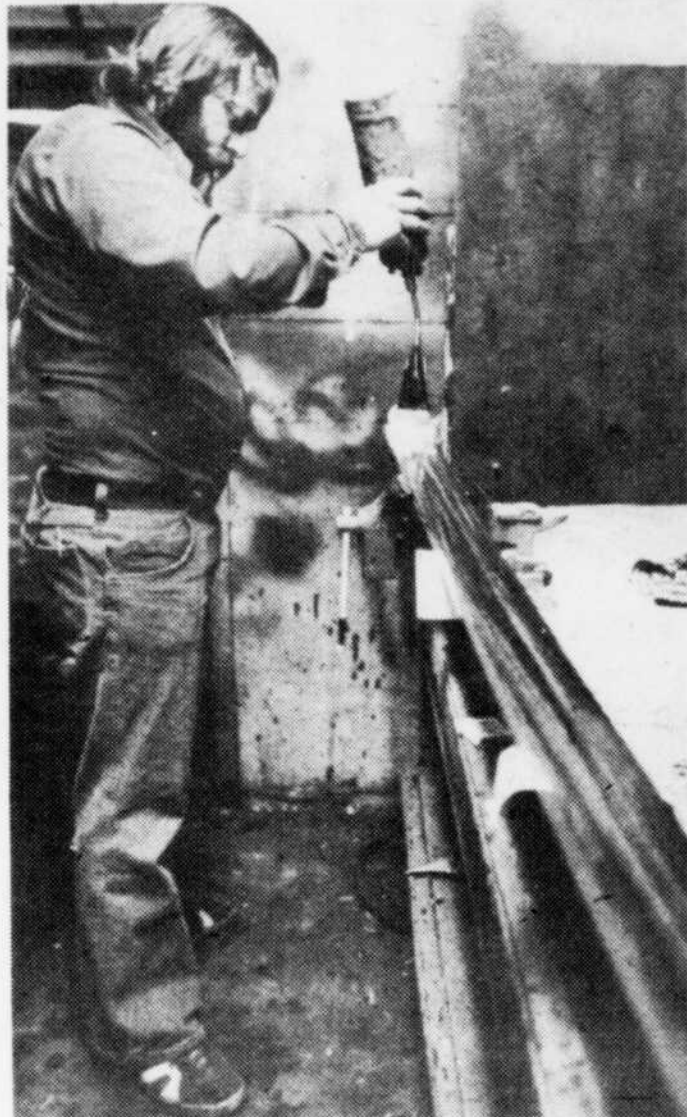
Manufacturers are making impressive strides toward mastering their materials and learning of new and better methods of putting their products together.

The selection of skis is a personal thing. The price range is fairly wide and the performance characteristics are numerous. The common

denominator in our listing, however, is quality on which you can rely. If it's any comfort at all, it might interest you to know that for just about the same amount of money, you can buy better skis today than you could just a few years ago.

If you had the opportunity to try the skis in our listing

and give each a good work-out, chances are you could guarantee yourself a first-class purchase. Unfortunately, that probably isn't possible, therefore, check the manufacturer's information, talk to friends and rely on your own insight. It's going to be a terrific season!



**PINE TARRING** — A process vital to the proper care of cross country skis, pine tarring hardens the skis base and seals the ski from absorbing water. Andre Lacharite of Munkittrick's Ski Shop in Sherbrooke is seen here tarring one of the great many cross country skis brought in so far this season.

(Photo by Steve Bell)

**COMPLETE**

**DOWNHILL**

**SKI SHOP**

**CROSS COUNTRY**

**SKIS**

Fritzmeir  
Yamaha  
Kastle  
Sohler  
Kazama  
Gastein

**BOOTS**

Heschung  
Nordica  
Rieker  
Zermatt

**BINDINGS**

Salomon  
Marker  
Cober

**CLOTHING**

Ski Suits  
Jackets  
Warm Ups  
Tuque  
Turtle Necks  
Wind Shirts  
Sweaters  
Ski Pants  
Mitts  
Gloves  
Moccasins  
Pine Tar  
Wax  
Scrapers  
Cleaners

**SKIS**

Norge  
Splitkein  
Edsbyn  
Strjoe  
Titon

**BOOTS**

Alfa  
Sport Cat  
Zermatt  
Ving

**BINDINGS**

Trol  
ABC  
NORGE  
Etc.

**POLES**

Fiberglass  
Aluminum  
Cane

**COMPLETE CROSS COUNTRY & ALPINE SKI SERVICE**

**H. MUNKITTRICK**

**1020 Wellington St. South**

**TEL. 569-0529**

**SHERBROOKE**

**THE BEST FAMILY SKIING IN THE EASTERN TOWNSHIPS**

FOR INFORMATION:

CALL: 243-6044 or 861-4082 or write: GLEN MOUNTAIN, KNOWLTON, QUE.

**"Come to Glen Mountain For Ideal Skiing"**  
**KNOWLTON, QUE.**

A lodge that serves tall drinks and terrific food... there's "Glad you came friendliness" that'll make you want to stay on and on... there's a learn-to-ski week that'll make you the "pro" of your home town slope... and...

**CHAIR LIFT AND TOWS**

Ski the (Littline) under our new and very dependable double chairlift, which also serves all seven of our well-cared for slopes.

The three high-capacity T-bars take you to an overall distance of over 5000 feet with a vertical drop of 1050 feet.

Combined capacity of these four lifts is 3400 per hour... which adds up to family skiing in comfort.

**SLOPES**

All nine of our ski slopes are well groomed for early and safe skiing.

The terrain is kept in A-1 condition by most modern machines.

Five miles of open slopes for the best family skiing in the Eastern Townships.

**FACILITIES**

- + Motel dining room
- + Cocktail Lounge-Dancing
- + Hiking Trails
- + 100 acres of beautiful scenery
- + Building lots available with resort facilities

**ROD ROY SKI SCHOOL**

Held Daily

Special Ski-Week Rates:  
Children's Ski School

**GLEN MOUNTAIN SKI SHOP**  
**RENTALS — SALES — REPAIRS**  
**SKI WEEKS**

SPECIAL—Ski Week Monday to Friday  
(8 hours of instruction) \$15.00



**HOW TO GET THERE**

FROM THE U.S.A. — Via Highway take Route 39 to Knowlton.  
FROM MONTREAL — Via Autoroute to Exit 52.

**CHALET - MOTEL**

A motel attached to our ski chalet is comfortably furnished with private bath and shower — and completely equipped for the enjoyment of our skiing visitors.

Our well organized cafeteria serves full course meals as well as fast lunches for skiers.

After skiing... relax in the cosy comfort of our rustic cocktail lounge.

**PARKING AREA**

Extra large parking lot with room for over 1200 cars. FREE parking for everyone.

**GLEN MOUNTAIN SKI SCHOOL**

**LADIES** — Every Wednesday is TRIPLE "L" Day  
(includes, LIFT, Lesson and Lunch) \$5.00

Is operated by the Rod Roy Ski Schools Ltd. Under the direction of Rod Roy, the school has 12 years experience in administering ski schools of all age categories.

**SKI SCHOOL RATES**

Junior Ski School starting January 10th for a period of 9 weeks in 1976. \$33.00 for the Season, similar arrangements for adults Sat. & Sun.

HOLIDAY SPECIAL of 5 (1 1/2 hr. lesson) is available starting Dec. 26th, 1975, the cost is \$16.00 per person with maximum of \$60.00 per family.

Mon. to Fri. lift tickets: \$ 5.00 — Weekends \$7.00 - \$6.00 - \$4.00

# Skiing a sport of speed, grace

It all looks so simple the way the pre-season ski movies show it - a highly conditioned athlete swinging through the snow, skis together, hands high, legs working like pistons, weight perfectly distributed.

It's a vision of speed, grace and beauty, that can convert many of the most convinced winter-haters to the gospel of skiing.

The quickest way - indeed, perhaps the only way - to make the transition from enthusiastic novice to all-out expert is by taking lessons from professional instructors.

If you've got the will, a bit of ability and a surprisingly small amount of cash, any of the 150 qualified pros at the five SKI EAST resorts can help you realize the dream of gliding over the snow something like those hot-shots in the films.

The SKI EAST ski schools, headed by Murray Yeudall at Bromont, Robert Bousquet at Mont Orford, Jean Lessard at Mont Sutton, Bob Richardson at Owl's Head, and George Stepanek at Jay Peak, offer some of the finest instruction in North America.

A major feature of learning to ski with SKI EAST is the interchangeable ski-week package. It's a five-

day, Monday to Friday plan offered every week throughout the season, providing lifts and lessons at any of the five resorts for only \$53.

In fact, Sutton even guarantees to have the rank beginner skiing parallel in seven days, or his money will be refunded.

With the interchangeable ski-week ticket, you can take lessons at any of the five SKI EAST resorts in any combination you like. You can spend all five days at one mountain, which most people do, or you can actually take one day at each of the five, or any combination in between.

The SKI EAST pros teach the internationally-respected Canadian technique, with the group's American member, Jay Peak in Vermont, teaching a variation of it called the "Jay Way."

Each of the SKI EAST resorts has 20 to 30 instructors, all of them hand-picked for their skiing and teaching ability, and for their personality.

Taking ski lessons not only speeds up the learning process, it makes the sport more enjoyable and safer. Ski patrol accident reports show that skiers who have taken lessons have less



SUTTON SLOPES are among the popular Ski East mountains that are found in the Eastern Townships and neighboring

Vermont. A couple above enjoy a day of sunshine on the slopes.

likelihood of being injured.

The five SKI EAST areas also schedule junior racing camps at Christmas, and courses of junior and teenage instruction. Lessard and Richardson, both former members of the Canadian Olympic team, feel these programs are vital to the young skier's development.

ALL SKI EAST resorts also offer packages that include accommodation and meals at many of the charming inns that dot the rolling mountains of Quebec's Eastern Townships and Northern Vermont.

Information on ski week packages is available from any of the five member resorts.

## Apres ski

(Continued from Page 6)

Stanbridge East.

Ross and Eva Burnett preside at the Shaggy Dog - one of the standbys for skiers in the South Bolton - Mansonville area. The Burnetts, who formerly operated a farm in North Sutton which catered to skiers, took over the 'Dog' five years ago. Rooms have been restored. However, the atmosphere, unique as it has always been, remains the same.

They feature a roast beef dinner Sunday nights, chicken in the basket and fried clams are popular year-round. Son John did a stint at the CP operated Algonquin Inn, St. Andrews by the Sea, N.B., last summer and assists in the kitchen when he's free from school work.

Entertainment is on the house with Ross the resident comic.

One of the unique features of the Shaggy Dog is it boasts the only hotel suite in the area with a built-in fireplace. A local legend persists the rattle snake displayed in a glass case in the bar skinned itself as it slithered through the stone wall seeking shelter!

Ron Ewing presides at the Thirsty Boot closer to Knowlton at the foot of the Glen Mountain road.

The Knowlton Pub and Sepp's Biergarten are the current hubs of apres-ski in Knowlton. The former, an

intimate spot closely associated with Mont Echo, features excellent snacks, steaks, good company and a constantly smiling staff.

Sepp and his crew have the best floors in any bistro in the area as befits a former bowling alley. A brass band and the traditional 'oompah' associated with Austro-Swiss-German bands prevails with Sepp usually leading the vocals.

Bob Jaimeson and Barry Ellson preside at the Lakeview. Knowlton's bastion, with Ann Cody adding her special attractions.

The Brome Lake Country Inn, midway between Knowlton and Foster, are building a steady clientele with the bulk coming from the Toronto area.

CBC television hostess Adrienne Clarkson gave hearty approval to their cuisine when she was filming a segment of 'the fifth estate' late last month. Smorgasbords are the house specialty. Former compatriot Linda Schultz tends to reservations and such mundane details in her usually charming manner.

Apres-ski in this area persists and improves year by year. Those involved in providing our visitors and residents with the food and fun are contributing greatly to the development of Ski East country.

The new Management welcomes You to Sutton and the



### Edel Inn

- Etoile Alpine

- \* Dining Room: Charcoal Steak - Sea Food
- \* French Cuisine
- \* Bar-Salon
- \* Disco-Bar
- \* Dance week-ends

For all reservations

Call: (514)538-2238

Maple Road - Sutton

## Discover SKI EAST\*

5 DAYS SKIING • 6 NIGHTS ACCOMMODATION  
MEALS • LESSONS... FROM \$145.00



100 miles of trails • 28 lifts (15 double chairs) • Altitudes ranging to 4,000 ft. with vertical drops of up to 2,100 ft. • Interchangeable books of lift tickets • Interchangeable ski weeks... with or without lessons • Certified ski instructors • Modern hill grooming equipment.

**ski**  
DANS L'EST

Reservations & Information

Bromont, Quebec  
Montreal 861-6152  
Mont Orford, Quebec  
Montreal 878-1411

Mont Sutton, Quebec  
Tel.: 514/538-2646  
Jay Peak, Vermont  
Montreal 866-1284

\*One hour  
east of  
Montreal



Owl's Head, Quebec  
Montreal 878-1453

# Echo a family centre

MONT ECHO (JM) — Pierre Bouchard, not to be confused with "de Maisonneuve Butch" of the Montreal Canadiens, is the ski school director here. Pierre, a native of Granby, previously worked at Bromont, Mont Gail and Sutton prior to joining Echo during the 73-74 season.

He indicated Mont Echo has been taken over by United States interests who are currently evaluating the total area with a possible view towards development of a year-round resort.

"We concentrated on renovation and improvements to the restaurant, ski shop and the overall concept of the lodge this year," he said. "Since the takeover by the new owners, who have refused offers to purchase since they took possession during the summer of '75, we have virtually withdrawn from Ski East.

"We are honoring week passes issued by and for Ski East as our name is still associated with their advertising. We have also eliminated the teaching methods endorsed by Ski East, that is to say the Gradual Length Method. However, this does not mean all our future relationships may be severed with the association. Time alone will tell and I believe this is one facet of the studies being conducted by our new owners."

Mr. Bouchard stated the aims of the organization at Echo are to foster and further a family atmosphere at this centre located some six miles from Knowlton.

"Adults who bring their children between the ages of five and six know they are under constant surveillance by our instructors. If one youngster expresses a desire for heat or any other bodily function the entire class is brought to the lodge en bloc then returned to the slopes in the same fashion. We'll look after them from at least 9:15 a.m. until 3:15 p.m., and if the parents are still skiing they will be tended to until their return."

Echo is the only ski centre in the area which allows the use of 'Ski-Bobs,' although Mr. Bouchard was quick to point out practitioners of the sport must wear 'mini skis' on their boots before they are allowed on the slopes.

Cross-country buffs are referred to the Farmers Rest approximately one mile from the centre on the Knowlton road.

Grooming at Echo is under the capable hands of Bob Ray and we have been assured there is no 'sugar coating' to the snow reports.

The new owners adopted a policy of opening Fridays through Sunday, although it

(Continued on Page 12)



# ski



# Mt. Echo

Knowlton, Que.  
7 miles from Knowlton  
Tel. 243-6722

MONT ECHO GUARANTEES  
THE BEST GROOMED  
SLOPES IN THE EAST.

- 2 — DOUBLE CHAIRLIFTS
  - 1 — 7200' - Length
  - 1 — 4200' - Length
- 1 — POMALIFT
  - 1 — 800' Length

20 MILES OF IMPROVED TRAILS AND SLOPES

CHALET RENOVATION  
FREE BUS SERVICE FROM KNOWLTON

COMPLETE EQUIPMENT  
SALES  
RENTALS  
AND REPAIRS  
COMPLETE CAFETERIA  
AND SNACK BAR.  
SNACK BAR AT THE  
TOP OF MOUNTAIN.

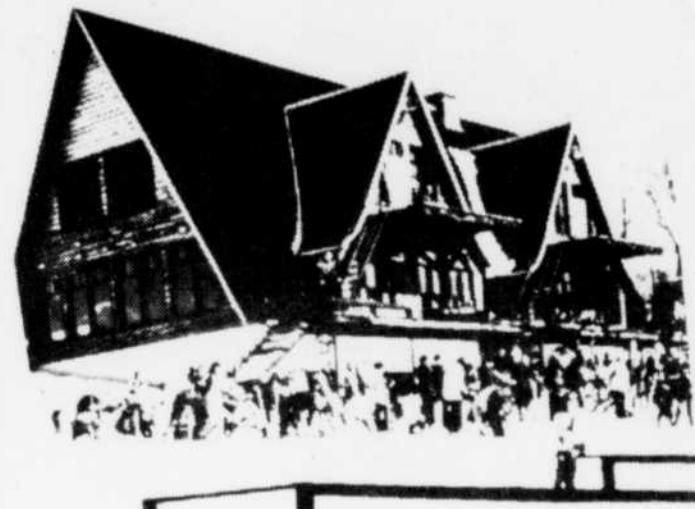
TOBOGGAN RUN  
CANADIAN SKI PATROL SYSTEM  
COMPLETE CLINIC

**MICHEL  
FOURNIER**

TEACHING BOTH THE  
HEAD — GLM TECH-  
NIQUE AND THE  
CANADIAN TECHNI-  
QUE.

**Ski School  
Director**

Call 243-6722



## Feel Good! Feel Free!

Located in the heart of the Ski East Region, Mont Echo is renowned as a family ski center. Two chairlifts and a pomalift serve a variety of trails and slopes offering skiing terrain to suit all types and all ages of skiers. Echo offers beautiful scenery that will fascinate everyone.

Echo has 17 miles of well groomed trails and glades. Restaurant, bar, quick service snack bar. Ski School; ski weeks and G.L.M. programs available. Ski shop, rental, repairs and gift shop. Canadian Ski Patrol. Daily snow reports. Motel-hotel accommodations at mountain base.

Interchangeable booklets of tickets accepted at:  
Mont Echo, Mont Sutton, Jay Peak, Mont Orford,  
Bromont, Owl's Head.

RATES  
\$6.00 Adults  
\$4.00 14 years & under  
\$4.00 1/2 day (morning)  
9 a.m. to 1 p.m.

SPECIAL GROUP RATES  
20 persons or more

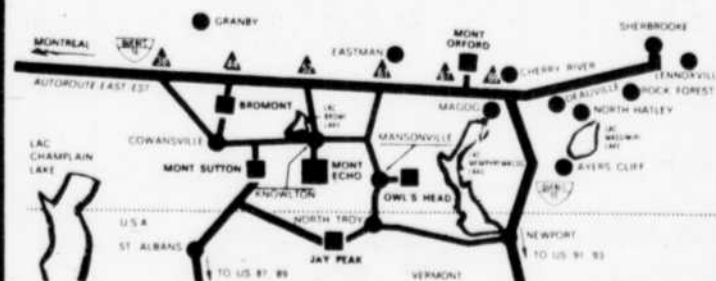
### How to Get There

MONT ECHO is strategically located six miles from Knowlton, Quebec, with a direct link on the Eastern Townships Autoroute, at Exit 52.

**From Montreal, Three Rivers, Quebec**  
Via Eastern Townships Autoroute, Exit 52 and Knowlton.

**From Toronto, Hamilton, London**  
Via Highway 401 east to Montreal and the Eastern Townships Autoroute — Quebec 10

**From Boston, New York, Hartford and the U.S.**  
U.S. 91-93 via Newport and Montreal Eastern Townships Autoroute-Quebec 10 or U.S. 87, 89 via St. Albans.



Mont Echo Box 458, Knowlton Tel.: (514) 243-6722  
Tourist Quebec. and now direct line from  
Association Montreal: 861-4068



MONT ECHO

# QPF carries out program to curb ski thefts



OPERATION ALPINE is being carried out by the Quebec Police Force this year to assist skiers prevent thefts of their equipment. Above Const. Andre Lessard of the Cowansville QPF detachment fills out

an identification tag for an Owl's Head skier recently. The tag contains the brand name and serial number of the skis. (Record photo by John McCaghey)

**OWL'S HEAD (JM)** — Skiers at this centre gave their entire approval to the Quebec Police Force's 'Operation Alpine' here last Sunday when Corporal Marcel Grondin and Constable Andre Lessard of the Cowansville detachment were on hand.

"We gave out at least 200 identification tags in about an hour and a half," Cpl. Grondin said. "This was remarkable as the public address system had broken down so the word spread from skier to skier with a bit of help from our posters."

Operation Alpine provides skiers with a visual memory tag which holds the brand name and the serial numbers of skis. The tags and wallets are provided at no cost by Loto-Quebec and the operation is aimed at curbing ski thefts.

Over 1,800 sets of skis were stolen in the Townships and the Laurentians last year!

"One of the problems in the past when skis were stolen was the owner usually knew the brand name but not the serial numbers," Cpl. Grondin said. "If they keep the tags with them and their skis are stolen we can feed the information into our computer system immediately which makes for quicker identification when we check for stolen skis."

"When the skis have no

serial number we etch the owner's drivers license or social insurance number on them and we can trace from there."

Over 750 pairs of skis were tagged last weekend at the site here, Glen Mountain, and Mont Sutton. The irony was the only theft reported by the Cowansville detachment was a pair of ski boots from Mont Sutton last weekend.

Back at the centre, it was bustling on Sunday. However, professional Bob Richardson told us we should have been there the day prior. "You had a hard time moving in the chalet," he explained. "We're lucky in the disposition of our lifts as they can handle the crowds."

The privately owned development on the western shore of Lake Memphremagog offers 17 trails and has a vertical drop of 1,770 feet. The lift systems have an uphill capacity of 3,600 per hour and the average annual snowfall is 180 inches.

"We've really started something this year," Bob chortled. "It's the 'revival' group where we try and get a bit of suppleness back into middle aged bodies. Fortunately they can unwind in the friendly confines of the bar after the ordeal is over."

Bob Richardson is a senior member of the Canadian Ski Instructors Alliance and is a

former member of the Canadian Olympic ski team. His charming wife, Paule, looks after the boutique.

The atmosphere at Owl's Head is relaxed and the outlook is towards making skiing fun.

Accommodation is available at the site, the food is hearty and plentiful.

Canadian ski patrollers were plentiful when we visited the site, admittedly some of them were inside trying to recover from the chill - evinced by bountiful remnants of frost clinging to moustaches and beards following runs in the sparkling sun.

A tip of the hat to Fred Kormann for his well operated centre which is constantly gaining in popularity year after year.



Welcome to the Owl's Head Ski Area

## EPICERIE MANSONVILLE

- Groceries - Western Beef
- Fruits and Vegetables
- Frozen Products
- Beer and Cider

DELIVERY: 292-5252

Route 39, Mansonville, Que.



WELCOME TO THE  
MANSONVILLE  
REGION.

Visit us once and we feel sure that  
you will be back.

### Mansonville Plastics Ltd.

MANSONVILLE, Que. (514) 292-3333

## — LAMOTHE'S MARKET —

Welcomes skiers to the area

See Us for

FRESH MEAT

GROCERIES

BEER & CIDER

Tel: 292-5882

MANSONVILLE, Que.



# SKI BIG

## OWL'S HEAD SKI AREA

MANSONVILLE, QUE.

24-HOUR SNOW REPORT

MTL. DIR. 878-1453 or 514 - 292-5592

— CANADIAN ALLIANCE  
SKI SCHOOL

— RENTAL AND REPAIR SKI SHOP

— SKI PATROL (C.S.P.S.)

— 1770 FOOT VERTICAL DROP

— MODERN SNOW PACKING  
EQUIPMENT

— CAPACITY 3600 SKIERS  
PER HOUR

— (2) 4000 FOOT  
CHAIRS

— 1500 FOOT CHAIR

— 2100 T-BAR

## BOB RICHARDSON

Director of Owl's Head Ski School  
Former Canadian Olympic Team  
member and senior member of the  
Canadian Instructors Alliance.



# Sugarloaf reports on best year ever



SUGARLOAF SLOPES are well-groomed and draw many ski enthusiasts to the popular Sugarloaf centre at Kingfield, Me. The vigorous expansion of lifts over the past three years there has almost doubled the skiers per day capacity with only brief waiting times necessary at lifts.

KINGFIELD, Maine — The Sugarloaf Mountain Corporation has released record statistics for the first part of the 1975-76 ski season. As of January 4, 1976 attendance is up 7 percent over the previous high season of 1974-75.

Charles Skinner, president of the Sugarloaf Mountain Corporation stated that "Sunday, December 28 was the biggest day in the 21 year history of the corporation." Over 6,000 skiers converged on Sugarloaf Mountain that day. "Lines on the Gondola were approximately 20 minutes and the chair's were about 10 minutes," Mr. Skinner added. "Our new high speed double chair lifts, Spillway and the two Doublerunner chairs add 3500 skiers per day to our skier capacity." The vigorous expansion of lifts over the past 3 years has almost doubled the skiers

per day capacity. Sugarloaf's eight other lifts, one 4-passenger gondola, 2 chairs and 5 t-bars have skiers per day capacity totaling only 4,000. With all 11 lifts running, total skier per day capacity is 7500. This means that Sugarloaf can handle 7500 skiers comfortably without long lift lines and over crowded slopes.

The fact that crowd levels are well below the mountain's skiers per day capacity means Sugarloaf will spend the next two years doing trail work. Mr. Skinner explained "The next two years will see extensive trail grooming. Our energies will be spent improving another aspect of our product, trails. If and when our skiers per day increases to the 7000 level then we will expand our uphill capacity by adding another high speed chairlift next to the Spillway chair."

**SUGARLOAF**

(207) 237-2631

*Harvey & Boynton*

**KINGFIELD**

(207) 265-2101

---

**K2, OLIN, HEXCEL FISCHER & DURAFIBER SKIS**  
Ski wear from **BOGNER, SWING WEST, ALP DESIGN, BOGNER HEAD**, coordinated ski fashions by **HENRI-CHARLES CLOSET** from Montreal, beautiful fit, practical & stylish.  
This year we have a great new children's corner with ski wear from **HOT GEAR, OBERMEYER & ALP DESIGN.**

**BOOTS** from **TECNICA** — \$125. to \$175.  
**HANSON** — \$175. to \$205.  
**OLIN T/1** — \$155.  
**SCOTT SUPERLIGHT** — \$185.  
**K2** — \$125. to \$175.

Accessories: Hats, gloves, goggles, socks, T-necks, gift ideas.

**Blue Ox Lodge** 'ON THE MOUNTAIN'

SUGARLOAF'S  
FINEST

**APARTMENT MOTEL...**  
offers you (couple or family)... EP-Plus\*  
Accommodations on the Mountain at Valley prices.

This year enjoy the freedom of a car-free, care-free vacation on the mountain at Sugarloaf's most modern Lodge. Call: [207] 237-2200 or write:

\*Part of the Plus is completely equipped kitchens the rest is personal service designed for your comfort.

**Blue Ox Lodge**  
Sugarloaf Mt., Me. 04947

**CROSS COUNTRY PACKAGING**

**\$100.00**      **\$69.95**

**No Wax Skis No. 1**

Boots Bindings Poles

**\$100.00**  
**\$69.95**

**SPLITKEIN WOOD**

Boots Bindings Poles

**\$104.00**  
**\$79.95**

**We are only 2½ hours from Sherbrooke at the base of SUGARLOAF.**

**Complete service on all your skiing & clothing needs.**

**STOP IN AND SEE US! WE'D LIKE TO MEET YOU!**



**HOT WAXING MACHINE** is demonstrated by Yves Gadbois of Arlington Sports in Sherbrooke. Hot waxing is just one of the services ski shops are providing the public throughout the Eastern Townships and Vermont. Included in these services are ski tuning, where the old wax is removed and the base is cleaned, sharpening edges and applying new wax.

(Record photo by Steve Bell)

## Mont Echo

(Continued from Page 9)

is speculated Echo will be open during the Ontario mid-winter break and probably over George Washington and Abraham Lincoln's birthday weekends when shussers from the United States slide north for super skiing.

"We had a few complaints of mono-lingualism among our staff last year," Mr. Bouchard said. "This year there shouldn't be any as all personnel are fluently bilingual. Another plus for us is we haven't raised the price of day tickets this year; we're still at \$4.50 for a half day and \$6.00 for a full day.

"Free style (Hot Dogging) instruction was introduced this year and although we've only had six trainees we feel this area will develop in the future. As I said earlier our instruction has headed away from the GLM system yet we still feel there is a place for shorter skis, although extremes in either direction should be avoided."

Mr. Bouchard said they were limiting the number of busses to 10 a day. "More than 10 bus loads creates lift-line problems, a situation we wish to avoid at all costs. The establishment of a halfway chair lift station is proving a boon as it allows us to equalize distribution of our

patrons, reducing lineups at the bottom.

"Instructors here are fully trained and we upgrade them through weekly seminars. I'm equally proud of our Canadian Ski Patrollers who have an excellent record. They're prepared to handle the usual accident load. However, if we have the slightest doubt in the case of a serious injury we ship them to the BMP Hospital, Cowansville by ambulance in short order."

Jeannot Menard who operates the lounge at Echo told us he has a Chili special between 3:30 and 5 p.m. when the centre is opened as well as 'good red wine' at a reasonable price. "If they don't feel that will fill them they can always try our piping hot onion soup," Jeannot concluded.

Meanwhile Pierre, a member of the Canadian Ski Instructors Alliance, tends to his 21 weekend instructors and tries to ensure all goes well at Echo even when the shop is closed.

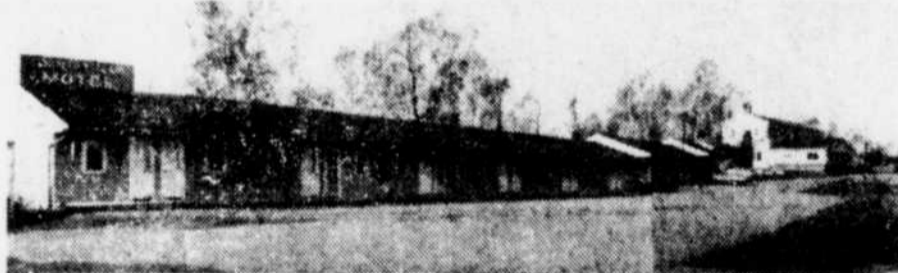
He indicated they currently have a good base and added he was very thankful for the Boxing Day snow fall. "That was the one that saved us," he concluded.



EVERY COLOR and every price range is available in ski equipment in ski shops found throughout the area. Refinement in boot liners, flow materials, special em-

phasis on padded tongues and the wrap-around cuff are some of the many features that have brought boots to their present sophistication in design.

HEATED  
UNIT  
MOTEL  
COLOR TV  
OPEN  
YEAR  
ROUND



Welcome to all skiers & snowmobilers

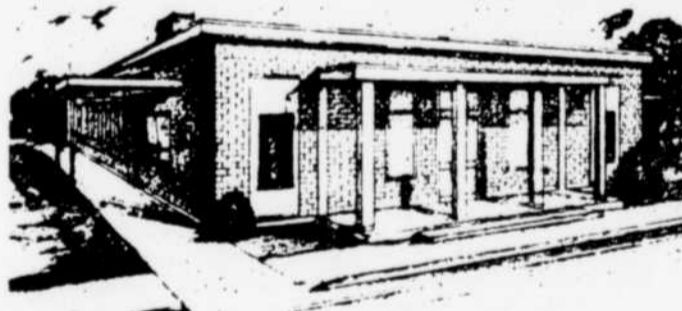
## COLEBROOK COUNTRY CLUB & MOTEL

RICHARD HEBERT your host

Restaurant—Dining room—Licensed Lounge—Banquets—Receptions

Route 26, Colebrook—DIXVILLE NOTCH, N.H.—Tel: (603)237-5566

## Welcome Canadian Skiers THE FIRST COLEBROOK BANK



Colebrook, N.H.

## Complete Banking Service

## The BUCK AND DOE RESTAURANT

While enjoying your favorite

Winter sport out this way

why not drop in?

We have...

Superb Food—Impeccable Service

"A REALLY NICE PLACE TO EAT"

MODERN DECOR  
RESERVATIONS APPRECIATED  
OPEN YEAR 'ROUND'

"WE SERVE COCKTAILS"

Your Hosts: Ronald & Helen Langford  
135 Main St., ISLAND POND

call: (802)723-4712





SUN, SNOW AND SLOPES add up to a beautiful day of skiing for the enthusiast at one of the area's popular ski centres.

## Ski East features outlined

SKI EAST, just one hour east of Montreal, Canada, astride the Quebec-Vermont international border, comprises five major ski centres within a 30 mile radius: JAY PEAK in northern Vermont and MONT SUTTON, BROMONT, MONT ORFORD and OWL'S HEAD in Quebec.

MILES and MILES of superb skiing (over 100 miles of trails and slopes), ranging from easy to expert.

ALTITUDES range to 4,000 feet elevation with VERTICAL drops of up to 2,100 feet.

GREAT SNOW The high elevations of the SKI EAST mountains and their location in a natural snowbelt means MORE snow and LONGER seasons. Average annual snowfall is between 150-250 inches!

TWENTY-EIGHT LIFTS throughout the region include 15 modern double chairlifts and Jay's famous 61-passenger AERIAL TRAMWAY.

INTERCHANGEABLE SKI WEEKS offer the opportunity to ski one, two or all areas of SKI EAST during your ski holiday. Five-day SKI WEEKS can be arranged for approximately \$150.00 including accommodation, meals, lifts and ski lessons at any area. ALL SKI EAST ski weeks (5 or 7 day) are interchangeable at all areas throughout the season.

TOP SKI PROS and certified instructors will teach you to ski for the full enjoyment of the sport. SKI EAST's schedule of instruction ranges between 10 hours and 20 hours for a 5-day ski week. NEW COMERS to skiing are eligible for a FREE ski initiation program with instruction on the fundamentals of the sport. (December 1-20, 1975)

INTERCHANGEABLE BOOKS OF LIFT TICKETS are valid on all lifts at all areas throughout the SKI EAST Region. INTERCHANGEABLE SEA-

SON PASS is accepted at all SKI EAST ski centres for the duration of a season: for the skier who is looking for a variety of exciting skiing and the convenience of a prepaid ticket.

MODERN GROOMING EQUIPMENT means well-manicured trails for the best of skiing. Over a half a million dollars worth of machinery work around the clock to provide the ultimate in packed-powder skiing. (For those ambitious skiers, some slopes are left untouched!)

INTERNATIONAL HOSPITALITY combines the best of Vermont friendliness and Quebec hospitality. Informal atmosphere prevails with over 150 INNS, MOTELS, HOTELS, CHALETS, GUEST HOUSES, AUBERGES, PENSIONS and DORMITORIES to choose from. APRES-SKI FUN is informal too, with an exciting variety of inns and night haunts awaiting your discovery!



WELCOME TO ALL CANADIAN VISITORS.

If you need gas — this is the place to stop at.  
If you have car trouble — this is the place to call.  
Or just stop in to say "HELLO".

CASSADY'S  STATION

97 Main St. — LYNDONVILLE, Vt.  
626-5511

## THE SHOP

A complete line of women's "Famous Brand" Clothing

Our WINTER SALE IS STILL GOING ON so do drop in!

We're always happy to see our Canadian friends.

Derby Road — NEWPORT  
Tel.: (802) 334-7381

WELCOME CANADIANS



Ski Burke  
One of the Best Ski Areas.



RUSSELL'S DRUG STORE

31 Depot St. — Lyndonville, Vt.  
Tel. 626-5440

RAYMOND B. HOAR INC.



PORSCHE — AUDI  
Authorized Sales & Service  
Complete line of parts  
St. Johnsbury, Vt. — Tel. 748-3158

Welcome to all Canadians



PROUTY & MILLER INC.

BUILDING MATERIALS • LUMBER

BAY STREET — NEWPORT

Call 334-6533

# Skimobile safety program carried out

MONTREAL — The dangerous practices of snowmobile enthusiasts will be the focal point of CP Rail's 1976 safety program.

Last winter, six people were killed and three injured in mishaps between snowmobiles and CP Rail trains. And, of the six fatalities, five occurred in the province of Quebec. The sixth occurred in Ontario. "Quebec's record is not only tragic, it's deplorable," said J.C. Machan, chief of CP Rail's department of investigation. "With proper knowledge and instruction, tragedies such as these could be averted."

To help spread better understanding of "safety and the railways", Chief Machan's inspectors will pay personal visits to snowmobile and sports clubs upon request, conducting group discussions and demonstrations to warn snowmobilers of the potential dangers of snowmobiling near railway tracks.

"We emphasize that snowmobiles are dangerous machines when used by youngsters or anyone who does not have sufficient training," Chief Machan urged.

In addition to working closely with snowmobile

clubs, railway constables conduct regular patrols along rail lines to prevent potentially dangerous trespassing by snowmobile operators.

"Anyone stopped for trespassing violations will be prosecuted," Chief Machan warns.

Section 359 of the Railway Act provides for a maximum \$20 fine to trespassing on railway property. The Act also provides a maximum

\$100 fine to operators of any vehicle on railway property without the railway's permission.

In circumstances where passage on or over railway property is absolutely essential, snowmobile operators, through their clubs, are obliged to contact, in writing, the railway superintendent in their area. A legal agreement is signed between the club and the railway allowing

the snowmobile club use of a specially-designated snowmobile crossing.

"Only under these conditions will we tolerate snowmobile travel on our property," said Louis Fortin, superintendent of CP Rail's Quebec division.

The most common explanation for snowmobile-

train accidents is that noise from snowmobile's engine drowns out the sound of an approaching train. Also, winter usually means reduced visibility, and a snowmobiler moving at high speed is often unable to perceive the actual speed of an on-coming train.



NEW MODELS are constantly being marketed in snowmobiles. Above is the new Nuvik 340 snowmobile by Moto-ski which boasts performance and 40 per cent lower noise level for 1976. The slide-suspension model has new high windshield and a forward-swept effect from orange striping on deep blue.

**ski-doo**

**SALES & SERVICE**

— Ski-Doo  
Accessories,  
etc.



Make Winter  
Fun With A Ski-Doo From:

**GARAGE BAZINET**  
& FILS ENRG.

51 North St. — WATERLOO — Tel. 539-1144

**SNOJET**

**S-S-S-S—SST**

Better than ever  
see the '76 models  
they're Dyn-A-Mite!

**SALES-SERVICE-PARTS**



**POULIOT CHAIN SAW**

620 MAIN E. — COOKSHIRE — 875-3847

## Snowmobile models improved

How do you go about improving the performance of a snowmobile that was as well accepted as last season's Nuvik 300! Bombardier-Rotax 300cc fan-cooled engine has new improved square shaft clutch, muffler, air intake silencer, manual-start voltage regulator, and one-piece 114-inch-long rubber track. Add new snap-on, pop-out high protective polycarbonate windshield, shock absorbers on skis, handy throttle and brake controls, self-adjusting brake, dependable bogie wheel suspension, and all-steel welded frame for torsion-free reliability.

Then, sweep a band of brilliant orange around the deep blue contoured cab and accentuate the cab-front with a top-center headlight and a new air-vent pattern.

Then test it all and find that the new Nuvik 300 snowmobile has better acceleration, better responsiveness on down shifting, and overall better performance with quietness.

The 300 is ideal for a first-time snowmobile purchaser or as a second machine for family and youngsters.

**Yamaha Snowmobiles**

DEPENDABILITY. NOT PLANNED OBSOLESCENCE.

AND

**moto-ski** 

**We're getting better all the time.**

Make your choice...  
then have fun on the snow!

**COUTURIER BP SERVICE**

**845-2373**

**GREENLAY, Que.**

**Sutton Motor Sales Ltd.**

Dealer for — CHRYSLER  
DODGE  
PLYMOUTH  
VALIANT




SALES & SERVICE — TOWING SERVICE

Tel. 538-2236
SIJTTON, Que.

**POLARIS COLT**

**The Lightweight**



The NEW single cylinder in 175cc and 244cc. Also the Twin cylinder with 250 and 340cc.  
See the new Polaris now.  
See the new features for '76.

**SALES — SERVICE — PARTS**

**LITTLE'S WELDING REG'D.**

842-2223 — Capelton Road —  
NORTH HATLEY

# Snowmobile fashions draw attention

Abaca is synonymous with style and comfort in snowmobiling apparel from Moto-Ski Sportswear... and the vivid tangerine tones in combination with black and white in the Abaca jackets for this season are attention getters.

Men and women alike will find the Abaca styling ideal for snowmobiling and other winter sports. The jackets are long enough to fully protect the back when riding. The hidden two-way front zipper is protected by a snapdown weather flap and the jacket is topped by a high knit turtleneck collar that can be worn turned down or pulled up to protect the lower face.

The tangerine jacket is accented by black and white patterning on the upper arms at the shoulder and on the two front snapdown

patch pockets. The styling is reversed on the black jacket, with orange and white highlighting.

The Abaca jackets are 100 per cent nylon outershell with a lining of 100 per cent nylon with polyester fiberfill. There are a nylon hideaway hood, adjustable belt, and vent eyelets under arms and beneath a back yoke.

The same Abaca design features are present, too, in a denim-look, waterproof fabric jacket which is extra warm with a thicker yet lightweight inter-filler lining. The Abaca jackets are ideal for virtually any casual outdoor-winter wear.

For the smart coordinated look in snowmobiling, Moto-Ski Sportswear's black high pants bring fit and comfort to men and women. There's room for freedom of movement but there's also a

trim appearance, with protection up underneath the jacket when riding in the snow.

Front zippers, shoulder straps, and zippered pockets are features of the pants, which have 100 per cent nylon outershell and the kind of warm lining that lets you get in and out easily.

For one-piece snowmobiling warmth, there's a Futura suit in navy with tangerine striping. Each shoulder is set off with three parallel tangerine stripes and the motif is carried out with tangerine chevrons and contrast striping on two front patch pockets.

The Futura has a convenient zippered pocket with Moto-Ski crest on the left sleeve just above the knit cuff.



**SPORTS FASHIONS** — Abaca jackets combined with black high pants highlight sportswear this season. A tangerine and black two-piece ensemble is contrasted by her partner's jacket and helmet in black, with tangerine and white patterning. Jackets have hideaway hood.



the machine that  
changed WINTER  
has changed  
There's a '76  
SKI-DOO  
to make your  
winter fun!

**DYSON & ARMSTRONG LTD.**

Sales & Service  
151 Main St. North — 826-3721

**RICHMOND**

**Cat** **Cat**

**HAVE FUN**

**PLEASUREMOBILING  
WITH THE CAT FAMILY**

**"SNOWMOBILES" — "ARCTIC WEAR"**

**MAGUIRE SPECIALTIES LTD.**

Route 108 — Cookshire —  
Lennoxville Highway

**SALES SERVICE PARTS**

**TRIMMEL INC**

**LIQUIFIRE**

**CYCLONE**

**GREEN MACHINE**

**Liquid cooling takes the heat off high-performance snowmobiling**

Front-mounted 340 or 440cc reed-valve engine, planted above the skis for superb handling. CD ignition and surface-gap plugs for sure-fire starts. Wide 32-inch ski stance, disk brakes, slide-rail suspension, and more. See Liquifire now!

**Stirs up a storm with race-inspired styling**

Race-inspired styling with 340 or 440cc reed-valve engine, set over the skis for maneuverability. Wide 32-inch ski stance and longer "wheelbase" for stability. CD ignition, surface-gap plugs, and disk brakes. Cyclone... now at our open house.

**Family fun, low price**

John Deere dependability in two family-priced sleds. The 300 has a piston-ported 292cc engine. The 400 has a 339cc reed-valve engine, CD ignition, and surface-gap plugs. Both have bogie wheel suspension. On display at our open house.

**SNOWMOBILE  
SAFETY FILM  
TRAIL MARKERS  
AVAILABLE TO CLUBS.**

**Rock Forest, Que.  
569-3002  
864-4688**

**TRIMMEL INC**



CROSS COUNTRY SKIING is currently enjoying an upsurge in popularity. Skiers above enjoy a sun-filled day on trails that wind through forest and field at one of the many Eastern Townships ski centres that also feature cross country ski trails.

## Cross country skiing growing in popularity

How many cross-country skiers are there in Canada?

"A sight more than there used to be," mused a Canadian Ski Marathon official last winter, as a seemingly endless line of gliders whisked by to disappear beyond the crest of a distant hill.

The annual Canadian Ski Marathon is a 100-mile, two-day tour for both competitors and recreational skiers between Lachute and Hull, Quebec. The tour attracted more than 2,000 skiers in 1975 and hundreds more were unable to participate as overnight accommodation in the area limited the number of entrants.

Nordic, cross-country or trail skiing continues to attract new devotees, not only from the book and boob-tube brigade, but new converts are being won from snowmobilers, snowshoers and even the sneers of the die-hard downhillers, particularly on slope-crowded weekends, have turned to cheers.

More resorts than ever are offering either complete cross-country ski package vacations or at least a one-day ski touring option with their regular alpine ski weeks. Airlines such as CP Air and Air Canada now include full package vacation offers to the Nordic set.

Air Canada's initial cross-country Skifari package to Banff, Lake Louise and Jasper, Alberta offers the splendor of the Canadian Rockies as a backdrop for their trail-skiing clientele.

Included are six nights and seven days, two half-days (5 hours) of guiding and instruction, maps and trail briefings by certified mountain guides. A Tilden rented car with 450 free miles (gas extra) is available at Calgary's Airport. Such a package with accommodation at Chateau Lake Louise and return airfare to Toronto, for example, costs \$304 per person, double occupancy.

# ARLINGTON SPORTS Cross Country Packages '76



OFFERS VALID WHILE STOCKS LAST  
PLEASE BE ADVISED:  
LIMITED SIZES & QUANTITIES  
IN SOME PACKAGES



**FREE**  
Olympic  
Ski Tuque  
with any  
Cross  
Country  
Package  
Purchased

Reg. 7.98

### The Pine Package

| Item                                 | Reg. Price |
|--------------------------------------|------------|
| Skis: SPLITKEIN NATURAL TOURING      | 74.98      |
| Boots: MUNARI RECORD                 | 34.98      |
| Bindings: TROLL no. 0085             | 8.98       |
| Poles: TONKIN with adjustable straps | 7.98       |
| Installation:                        | 4.98       |

If Purchased Separately 131.90

**99<sup>99</sup>** Package Price **SAVE 31<sup>91</sup>**

### The Balsam Package

| Item                        | Reg. Price |
|-----------------------------|------------|
| Skis: RAUTIANINEN ANTI-SLIP | 39.98      |
| Boots: SKI-TUR              | 19.98      |
| Bindings: STRIDE            | 8.98       |
| Poles: TONKIN               | 6.98       |
| Installation:               | 4.98       |

If Purchased Separately 80.90

**59<sup>99</sup>** Package Price **SAVE 20<sup>91</sup>**

### The Get-away Package

| Item  | Reg. Price |
|---|------------|
| Skis: SPLITKEIN BROWN or KARHU ORANGE TOURING | 49.98      |
| Boots: MUNARI PROMENADE or NORFON             | 29.98      |
| Bindings: ROTTEFELLA START                    | 9.98       |
| Poles: TONKIN                                 | 6.98       |
| Installation:                                 | 4.98       |

If purchased separately 101.90

**79<sup>99</sup>** Package Price **SAVE 21<sup>91</sup>**

## ARLINGTON SPORTS

THE TOTAL SPORTS STORE



- |   |   |  |  |   |   |  |  |   |
|---|---|--|--|---|---|--|--|---|
| <p><b>DOWNTOWN</b><br/>CORNER<br/>STE. CATHERINE<br/>&amp; STANLEY<br/>288-0181</p> | <p><b>GREENFIELD<br/>PARK</b><br/>355 BOUL. TASCHEREAU<br/>672-5331</p> | <p><b>WEST ISLAND<br/>MALL</b><br/>TRANS CANADA<br/>HIGHWAY<br/>EXIT 35<br/>683-8400</p> | <p><b>CENTRE LAVAL</b><br/>LAURENTIAN<br/>AUTOROUTE<br/>EXIT 6E<br/>688-1021</p> | <p><b>ARLINGTON PMS</b><br/>7201 BOULEVARD<br/>LES GALERIES DANJOU<br/>353-9000</p> | <p><b>CARREFOUR<br/>DE L'ESTRIE</b><br/>3050 PORTLAND<br/>SHERBROOKE<br/>567-5286</p> | <p><b>PLACE DU<br/>PORTAGE</b><br/>PLACE DU PORTAGE,<br/>HULL<br/>770-9440</p> | <p><b>BAYSHORE<br/>SHOPPING<br/>CENTRE</b><br/>100 BAYSHORE DRIVE,<br/>OTTAWA<br/>829-7690</p> | <p><b>MERRVALE<br/>ROAD</b><br/>1558 MERRVALE ROAD,<br/>OTTAWA<br/>224-3823</p> |
|---|---|--|--|---|---|--|--|---|